



ARBORICULTURAL IMPACT ASSESSMENT

WIMBLEDON PARK PROJECT

April 2024

51365-TEP-XX-XX-RP-X-00005-S2-P01

LUC

Arboricultural Impact Assessment GLA Planning Addendum

The AELTC Wimbledon Park Project

Report Reference Number: 51365-TEP-XX-XX-RP-X-00005-S2-P01

The AELTC Wimbledon Park Project

- This GLA Arboricultural Impact Assessment Addendum sets out the changes to tree related impacts as a result of the minor changes to the scheme design shown by General Arrangement Plan (Ref 5136-LUC-XX-XX-DR-L-02062-S2-PO3), resulting from discussions with the Greater London Authority (GLA) since the submission of the initial planning addendum in April 2022 and the original planning application of June 2021 (Arboricultural Impact Assessment Ref:51365-TEP-XX-XX-RP-X-00001).
- The proposed changes enable the public to enjoy access to an additional 1.7ha of AELTC land on top of the proposed 9.4ha public park to the south, giving 11.1ha total of publicly accessible land. To enable this enhancement, minor amendments to the current planning scheme are required including the re-design and location of entrance gates, railing boundaries, access road and path alignments, site furniture and planting.
- A total of 1048 individual trees and 12 groups of trees (consisting of approximately 64 further trees) had been surveyed to inform the original planning application in 2021.
- Of this population, 41 trees had been assessed as veteran, with a strong cohort of future candidate veteran trees. **None of these trees are impacted by the design changes.**
- At the original planning stage, 296 trees (28%) were identified for removal to facilitate the development and/or restore the landscape to its historic character (235 and 61 trees respectively). Of the 296 proposed tree removals, none were assessed as Category A (as defined by British Standard BS5837: 2012 Trees in *Relation to Design, Demolition and Construction – Recommendations*), 28 Category B, 252 Category C and 16 were found to be in such a poor condition with limited life expectancy that they have been classified as Category U. **An additional 4 trees would require removal** to facilitate the proposed design changes, specifically being impacted by the realignment of paths, bringing the total number of removals to 300.
- All four trees have been assessed as Category C ‘trees of low quality’. They are located within an existing hedgerow/scrub close to the site’s northeastern boundary. They are three early mature small silver birch and a bird cherry. Appendix A provides further details of the trees in the Tree Schedule.
- A further eighteen trees were identified at planning in 2021 as suitable for lifting and transplanting within the site. **No changes are proposed to the number of trees to be transplanted.**
- **Table 1:** Tree Numbers Impacted

	Current Planning Application	GLA Planning Addendum April 2024
Existing veteran trees	All 41no. retained	All 41no. retained
Proposed additional Trees	1,500	1,500
Proposed tree removals	296	300
Proposed tree transplants	18	18

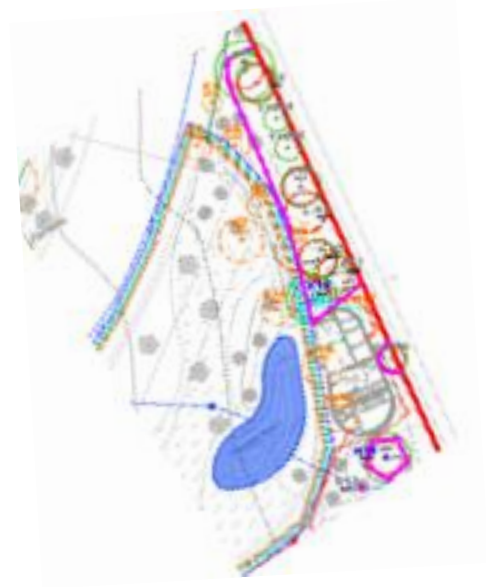
The AELTC Wimbledon Park Project

- For ease of reference, an extract of the original (2021) Tree Protection Plan (ref 51365-TEP-XX-XX-DR-L-02151) and the updated GLA Addendum Tree Protection Plan (ref 51365-TEP-XX-XX-DR-L-02151-S2-P02) are shown as Figure 1, 2 and 3. The Tree Protection Plan page relating to this area is in Appendix B.

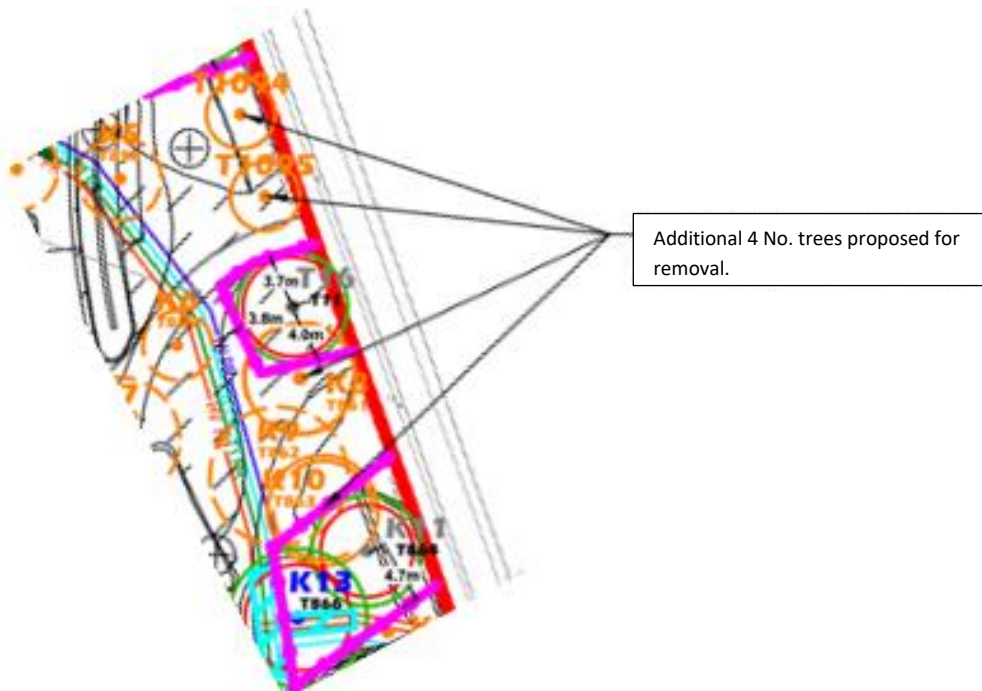
Figure 1: An extract from the 2024 GLA Addendum Tree Protection Plan



Figure 2: An extract from the 2021 Original Planning Submission Tree Protection Plan



- Figure 3:** Enlarged extract from the 2024 GLA Addendum Tree Protection Plan



The AELTC Wimbledon Park Project

- The proposed remaining 748 individual trees and the twelve groups of trees are to be retained in situ and integrated into the proposed new design. Sufficient space and adequate protection measures have been set out to ensure that these retained trees are not damaged during the pre-construction and construction phase and to enable their successful development post-construction. An Outline Arboricultural Method Statement (ref: 51365-TEP-XX-XX-RP-X-00002) was submitted in support of the original planning application in 2021 and should be read in conjunction.
- Additional compensatory tree planting to offset the loss of the additional 4 trees is proposed. It is understood that off site design proposals within Wimbledon Park include additional planting, subject to S106 Agreement, as part of the package of wider improvements. It is estimated that this could include a minimum of 45 additional trees.

The AELTC Wimbledon Park Project

Appendix A: Tree Schedule

Note variation between the species shown in Appendix A-The Tree Schedule in the 2021 planning submission (Ref: 51365-TEP-XX-XX-RP-X-00001) and the updated 2024 tree data. Retention Categories are the same. This area was resurveyed after significant clearance of bramble in November 2021.

The AELTC Wimbledon Park Project: 2024 GLA Planning Addendum

Tree Survey BS5837-2012



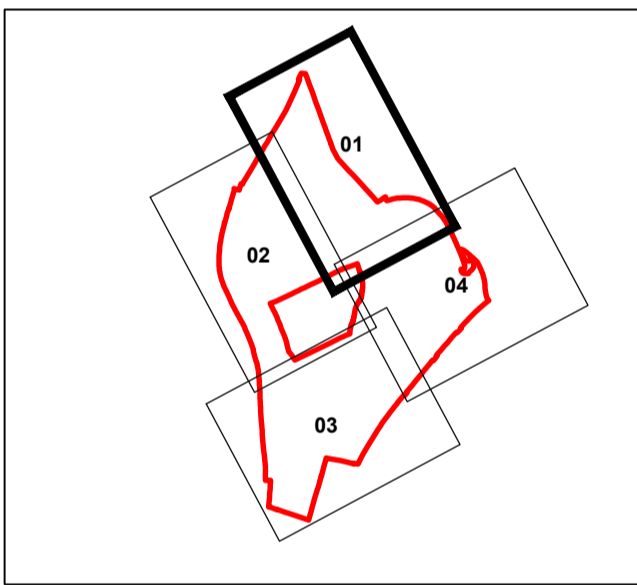
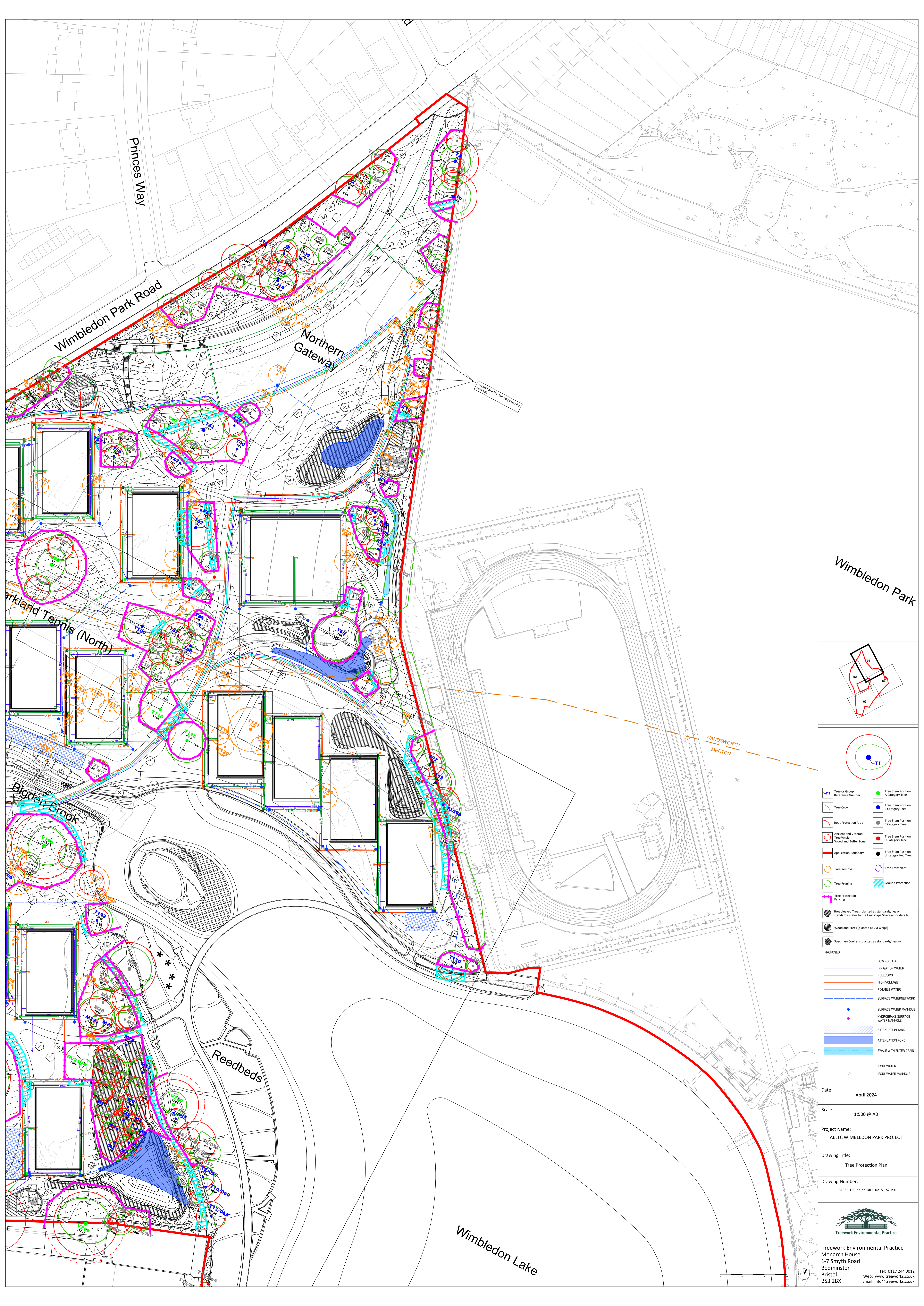
Tree/Group Reference	Tree Count	Species	Height (m)	Stem Count	Stem Diameter (cm)	Crown Radius (m)				Crown Clearance Height (m)	Lowest Branch Height (m)	Life Stage	Physiological Condition	Observations and Recommendations	RPA (m ²)	RPR (m)	Remaining Contribution (Years)	Retention Category	Retention Sub-category
T861	1	<i>Betula pendula</i> Silver Birch	8.0	1	22	N 3.0	E 3.0	S 2.5	W 4.0	2.5	3.5	Early Mature	Fair	Fell - Ground level.	21.9	2.6	10-20	C	2
T863	1	<i>Betula pendula</i> Silver Birch	8.0	1	19	N 2.5	E 4.0	S 4.0	W 4.0	3.5	3.0	Early Mature	Good	Fell - Ground level.	16.3	2.3	40+	C	1
T1094	1	<i>Cerasus avium</i> Wild Cherry	7.0	2	18	N 2.5	E 2.5	S 4.0	W 4.5	4.0	1.0	Early Mature	Good	Fell - Ground level.	15.3	2.2	40+	C	1
T1095	1	<i>Betula pendula</i> Silver Birch	6.5	1	21	N 2.0	E 2.0	S 1.0	W 2.0	5.0	4.5	Early Mature	Poor	Fell - Ground level.	20.0	2.5	10-20	C	2

Tree Schedule Key



Tree/Group Reference	Reference number for individual trees or groups of trees, prefixed by T (Tree), G (Group), W (Woodland), H (Hedge) or S (Shrub) to indicate the type of feature.
Tree Count	Number of trees of a particular species recorded within a group feature, with the default value of 1 for single trees.
Species	Scientific name followed by common name (where available).
Height (m)	Tree height to the nearest metre, either measured with a device or estimated. Tree height for group records refers to the estimated average height of trees within the group (unrepresentative trees may be excluded from this estimate).
Stem Count	Number of stems. Stem count indicates whether the tree is single-stemmed or multi-stemmed and informs the RPA calculation.
Stem Diameter (cm)	Stem diameter, measured at 1.5m above ground level in accordance with Annex C of BS5837:2012. Diameters of multi-stemmed trees are presented as a combined stem diameter calculated in accordance with the formulae in Section 4.6.1 of BS5837:2012. Stem diameter for group records refers to the estimated average stem diameter of trees within the group (unrepresentative trees may be excluded from this estimate).
Crown Radius (m)	Distance from stem position to crown periphery in either the four cardinal or four ordinal directions, estimated to the nearest half metre. Crown spreads for group records refer to the estimated average spreads of trees within the group (unrepresentative trees may be excluded from this estimate).
Crown Clearance Height (m)	Distance between the ground and the lowest point of the crown periphery, estimated to the nearest half metre.
Lowest Branch Height (m)	Height of the lowest branch, the removal of which is considered likely to have a significant negative effect on the tree in terms of physiology or in terms of the size of wound created.
Life Stage	Young, Semi-mature, Early Mature, Mature, Late Mature, Ancient or Veteran.
Physiological Condition	Good, Fair, Poor, Dead.
Observations	General description of the tree or tree group, including basic features and morphology, structural and physiological condition, growing conditions and surroundings.
Recommendations	Management recommendations for tree works to address immediate unacceptable risks, or to facilitate development proposals.
RPA (m²)	Minimum area around a tree deemed to contain sufficient roots and rooting soil volume to maintain the tree's viability, in which the protection of roots and soil structure is treated as a priority. Calculated from the stem diameter according to the formulae in BS5837:2012. RPA for group records is based on the estimated average stem diameter of trees within the group (unrepresentative trees may be excluded from this estimate).
RPR (m)	Radius of the RPA, in metres, when this is plotted as a circle around the tree stem.
Remaining Contribution (years)	Estimated number of years for which the tree will continue to make a positive contribution to the site, banded as < 10, 10-20, 20-40, 40 +.
Retention Category	Quality and value category (A , B , C or U) as defined in Table 1 of BS5837: 2012 (reproduced below), where A = high quality and value; B = moderate quality and value; C = low quality and value and U = tree identified for removal due to poor condition regardless of development proposals.
Retention Sub-category	One or more sub-categories (1-3) as defined in Table 1 of BS5837: 2012 (reproduced below), assigned for Categories A , B or C where 1 = arboricultural qualities, 2 = landscape qualities and 3 = conservation and cultural value.

Appendix B: Tree Protection Plan (ref: 51365-TEP-XX-XX-DR-L-02151-S2-P02)



	Tree or Group Reference Number		Tree Stem Position A Category Tree
	Tree Crown		Tree Stem Position B Category Tree
	Root Protection Area		Tree Stem Position C Category Tree
	Ancient and Veteran Tree/Ancient Woodland Buffer Zone		Tree Stem Position Unassigned Tree
	Application Boundary		Tree Stem Position Unassigned Tree
	Tree Removal		Tree Transplant
	Tree Pruning		Ground Protection
	Tree Protection Fencing		Broadleaved Trees (planted as standards/heavy standards - refer to the Landscape Strategy for details)
	Woodland Trees (planted as 2yr whips)		Specimen Conifers (planted as standards/heavy)
PROPOSED			
	LOW VOLTAGE		SURFACE WATER MANHOLE
	IRRIGATION WATER		HYDROBRAKE SURFACE WATER MANHOLE
	TELECOMS		ATTENUATION TANK
	HIGH VOLTAGE		ATTENUATION POND
	POTABLE WATER		SWALE WITH FILTER DRAIN
	SURFACE WATER NETWORK		FOLL WATER
	SURFACE WATER MANHOLE		FOLL WATER MANHOLE
	HYDROBRAKE SURFACE WATER MANHOLE		

Date: April 2024

Scale: 1:500 @ A0

Project Name: AELTC WIMBLEDON PARK PROJECT

Drawing Title: Tree Protection Plan

Drawing Number: 51365-TEP-XX-DR-L-02151-S2-P01

Treework Environmental Practice
 Monarch House
 1-7 Smyth Road
 Bedminster
 Bristol
 BS3 2BX

Tel: 0117 244 0012
 Web: www.treeworks.co.uk
 Email: info@treeworks.co.uk