

### Proposed WPB3 South Elevation

1 : 100

**Building & Site References:**

CB	Corner Building - Central Form & East Form
NHG	Notting Hill Gate Building
KCS1	Kensington Church Street Building 1
KCS2	Kensington Church Street Building 2
WPB1	West Perimeter Building 1
WPB2	West Perimeter Building 2 - Cube
WPB3	West Perimeter Building 3
New Public Square	New Publicly Accessible Open Space

**Facade Elements**

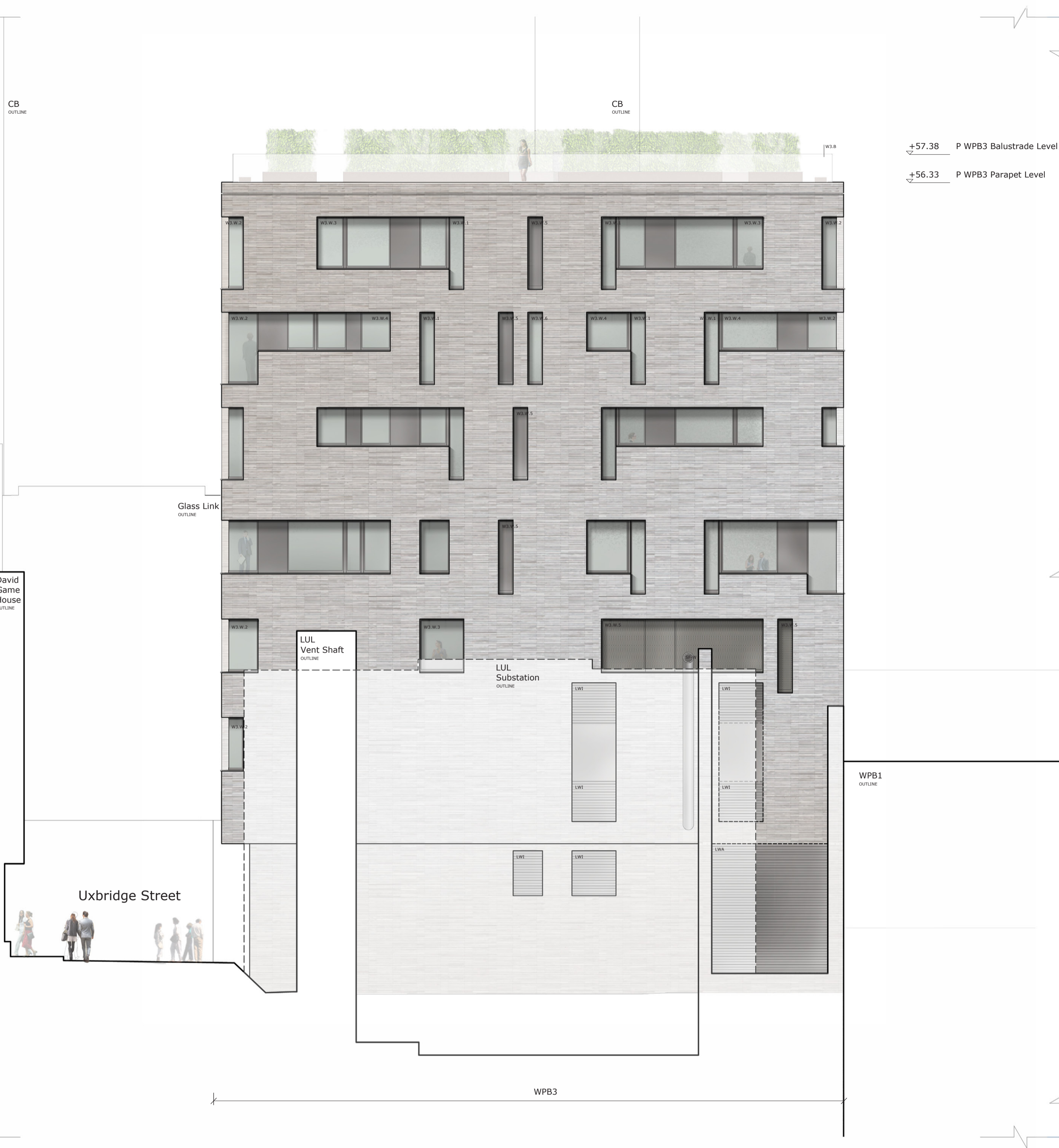
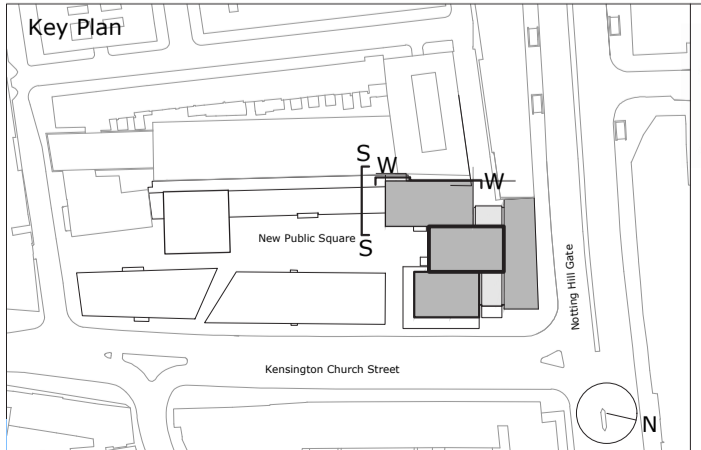
W3.W.1	Slot - Floor to ceiling recessed openings expressing vertical slots in building form - strategically located responsive to internal layouts. Deep reveal to slot opening.
W3.W.2	Corner - Recessed openings expressing corners of building form. Deep reveal to strip opening. Dark metal frame to fixed double glazing and glass to glass joint to open corner.
W3.W.3	Strip - Recessed opening (with upstand) expressing strips in building form. Deep reveal to strip opening. Dark metal frame to fixed, inward opening top tilt double glazing and integrated solid metal panels.
W3.W.4	Strip - Privacy - High level recessed openings expressing strips in building form positioned to create privacy - with visibility out towards sky when seated and visibility towards sky and streetscape when standing. Deep reveal to strip opening. Dark metal frame to fixed, inward opening top tilt double glazing and integrated solid metal panels.
W3.W.5	Opaque Metal - Deep reveal to opening. Dark metal frame to solid metal panel.
W3.W.6	Opaque Glazing - Deep reveal to opening. Dark metal frame to opaque glazing.

**Key**

AOV	Automatic Openable Vent
BA	Balcony
BMU	Building Maintenance Unit
C	Canopy at 1st floor
CB.A1-21	Residential Apartments
C.O	Cycle Storage - Office
C.R	Cycle Storage - Residential
C.R.T	Cycle Storage - Retail
E	Existing Level
EE	Emergency Exit
EO-S	Entrance Office Service
ER	Entrance Residential
ERT	Entrance Retail
ERT-S	Entrance Retail Service
ES/O	Entrance Flexible Surgery/Office
ES/O-S	Entrance Flexible Surgery/Office Service
LL	Lower Level
NT	New Tree
P	Proposed Level
P.FL	Proposed Finish Floor Level
R.F.1-14	Retail Units
R.F.O	Refuse - Office
R.F.R	Refuse - Residential
R.F.RT	Refuse - Retail
R.F.S/O	Refuse - Flexible Surgery/Office Services
S	Services
SG	Shadow Gap Detail
SL	Soft Landscape
SFA	Zone within the proposed substructure that is safeguarded for potential future step free access to District & Circle Line (Eastern Platform)
SF-R	Service Flue discreetly located - set back away from roof edge
SF-W	Service Flue discreetly located - concealed behind screening wall
TP	Tree Pit
UL	Upper Level
VEH1-2	Vehicle Lifts
WA	M4(3) Wheelchair adaptable unit
WAC	M4(3) Wheelchair accessible unit
WRT	Water Retention Tank

**Material References:**

Glass	Low iron glass to maximised transparency. The glass specification will vary according to the location and safety requirements. Residential units: factory assembled hermetically sealed triple glazing units. Office and retail: factory assembled hermetically sealed double glazing units.
Brick	Long format clay brick. Special brick formats in locations to deliver architectural details. Colour: to be tested in range of warm greys, nearly white through to brown/ yellow gaunt. Decision to be informed by large sample including mortar setting.
Metal	Frames to be rich dark patinated aluminium bronze. All visually exposed metal elements including frames to windows, doors, panels and cladding panels to match in colour.



### Proposed WPB3 West Elevation

1 : 100

**Building & Site References:**

CB	Corner Building - Central Form & East Form
NHG	Notting Hill Gate Building
KCS1	Kensington Church Street Building 1
KCS2	Kensington Church Street Building 2
WPB1	West Perimeter Building 1
WPB2	West Perimeter Building 2 - Cube
WPB3	West Perimeter Building 3
New Public Square	New Publicly Accessible Open Space

**Facade Elements**

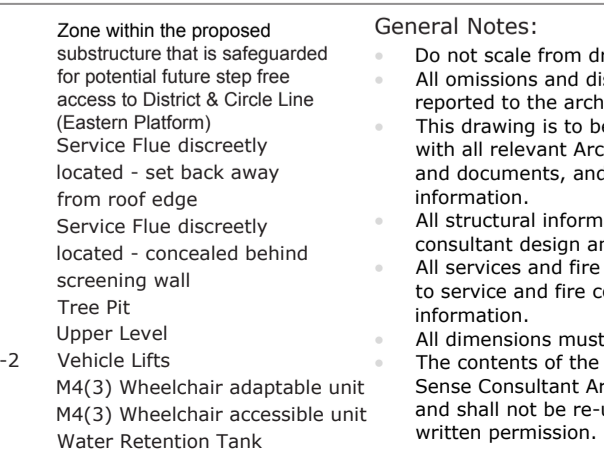
W3.WR.1	Retail - Deep reveal to opening. Brick upstand with shadow gap detail, fixed double glazing and openable double glazed entrance doors with metal handle detail. Retail signage with discretely integrated vents.
W3.B	Glass balustrade with concealed fixing to brick parapet to form light top to building.
LWA	Louved Wall
LWI	Louved Window

**Key**

ERT-S	Entrance Retail Service
ES/O	Entrance Flexible Surgery/Office
ES/O-S	Entrance Flexible Surgery/Office Service
LL	Lower Level
NT	New Tree
P	Proposed Level
P.FL	Proposed Finish Floor Level
R.F.1-14	Retail Units
R.F.O	Refuse - Office
R.F.R	Refuse - Residential
R.F.RT	Refuse - Retail
R.F.S/O	Refuse - Flexible Surgery/Office Services
S	Services
SG	Shadow Gap Detail
SL	Soft Landscape
SFA	Zone within the proposed substructure that is safeguarded for potential future step free access to District & Circle Line (Eastern Platform)
SF-R	Service Flue discreetly located - set back away from roof edge
SF-W	Service Flue discreetly located - concealed behind screening wall
TP	Tree Pit
UL	Upper Level
VEH1-2	Vehicle Lifts
WA	M4(3) Wheelchair adaptable unit
WAC	M4(3) Wheelchair accessible unit
WRT	Water Retention Tank

**Material References:**

Glass	Low iron glass to maximised transparency. The glass specification will vary according to the location and safety requirements. Residential units: factory assembled hermetically sealed triple glazing units. Office and retail: factory assembled hermetically sealed double glazing units.
Brick	Long format clay brick. Special brick formats in locations to deliver architectural details. Colour: to be tested in range of warm greys, nearly white through to brown/ yellow gaunt. Decision to be informed by large sample including mortar setting.
Metal	Frames to be rich dark patinated aluminium bronze. All visually exposed metal elements including frames to windows, doors, panels and cladding panels to match in colour.



**Note:**

- Ground floor external textures shown are illustrative only and are not submitted for approval;
- Retail signage shown is illustrative only and is not submitted for approval;
- Internal layouts shown are illustrative only and are not submitted for approval;
- References to "Retail" mean use for any purpose falling within any one or more of Use Classes A1, A2 and A3;
- The label WA or WAC indicates only that the unit concerned could meet the requirements of Approved Document M. The applicant expects the local planning authority to require approval of a plan showing layouts and location of wheelchair accessible and adaptable units by way of condition;
- Material textures are illustrated to indicate area of material only and sizes are illustrated indicatively and are not submitted for approval. The applicant expects the planning authority to require approval of external materials by way of condition;
- External materials (including landscape) are shown for illustrative purposes only and are not submitted for approval. The applicant expects the planning authority to require approval of external materials by way of condition.
- Textures paled out to buildings in the background to indicate distance as appropriate.

Rev.	Date	Details	Drawn/Checked	project/client	project no.
				NH&KCS	1059
				Notting Hill Gate KCS Ltd.	
				dwg. no.	rev. scale
				P-WPB3-AA(0)-302	1/100@A1
				date	
				Proposed WPB3	09/07/18
				South, West	drawn checked
				Elevations	NV VB/DL
				issued for	
				Planning	

**urban sense**  
ARCHITECTS

Urban Sense Consultant Architects Ltd.  
89 Wandour Street, 4th floor  
London W1F 0UB t:020 7436 9707

www.urbansense-architects.co.uk  
©Urban Sense Consultant Architects Ltd.