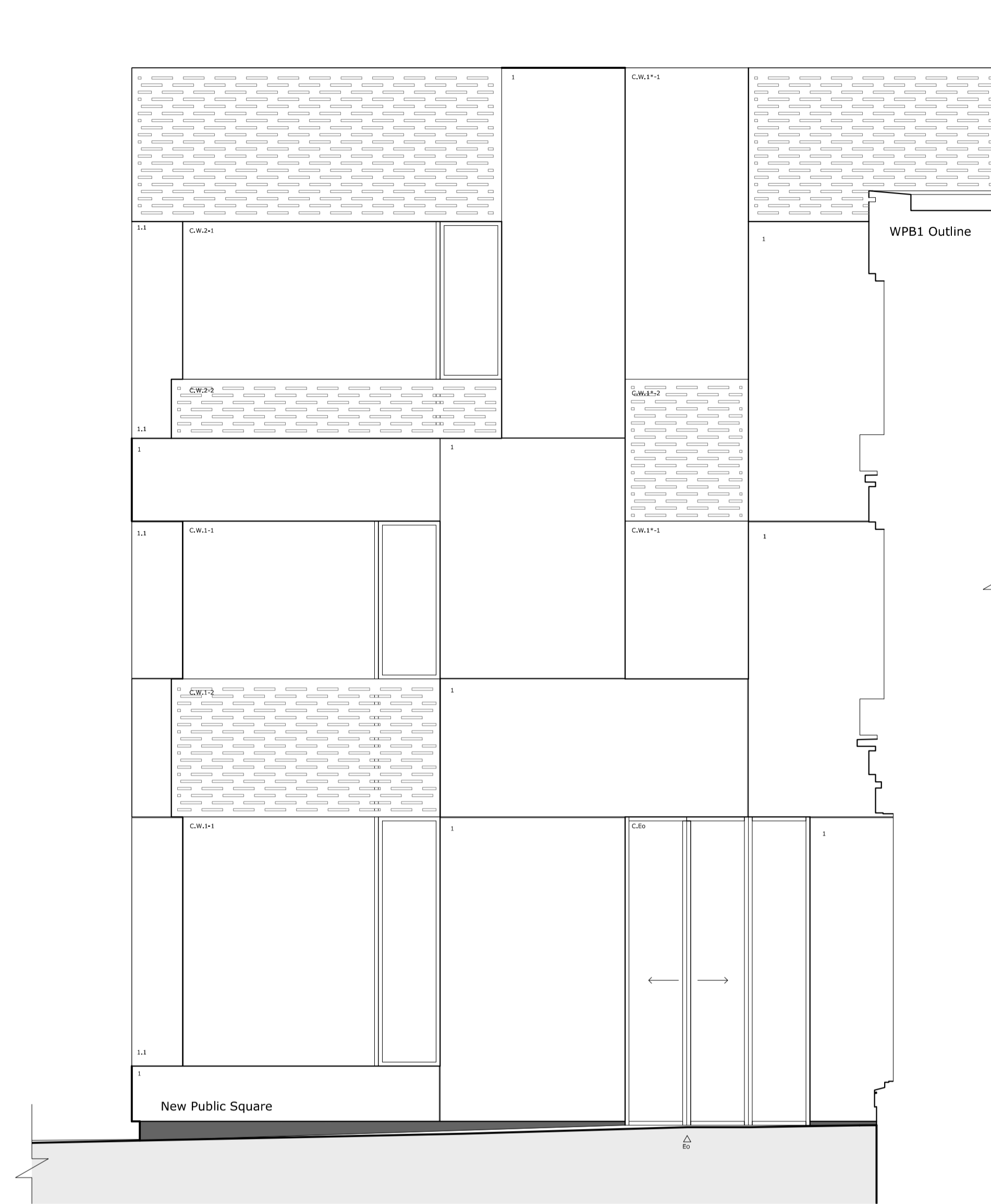
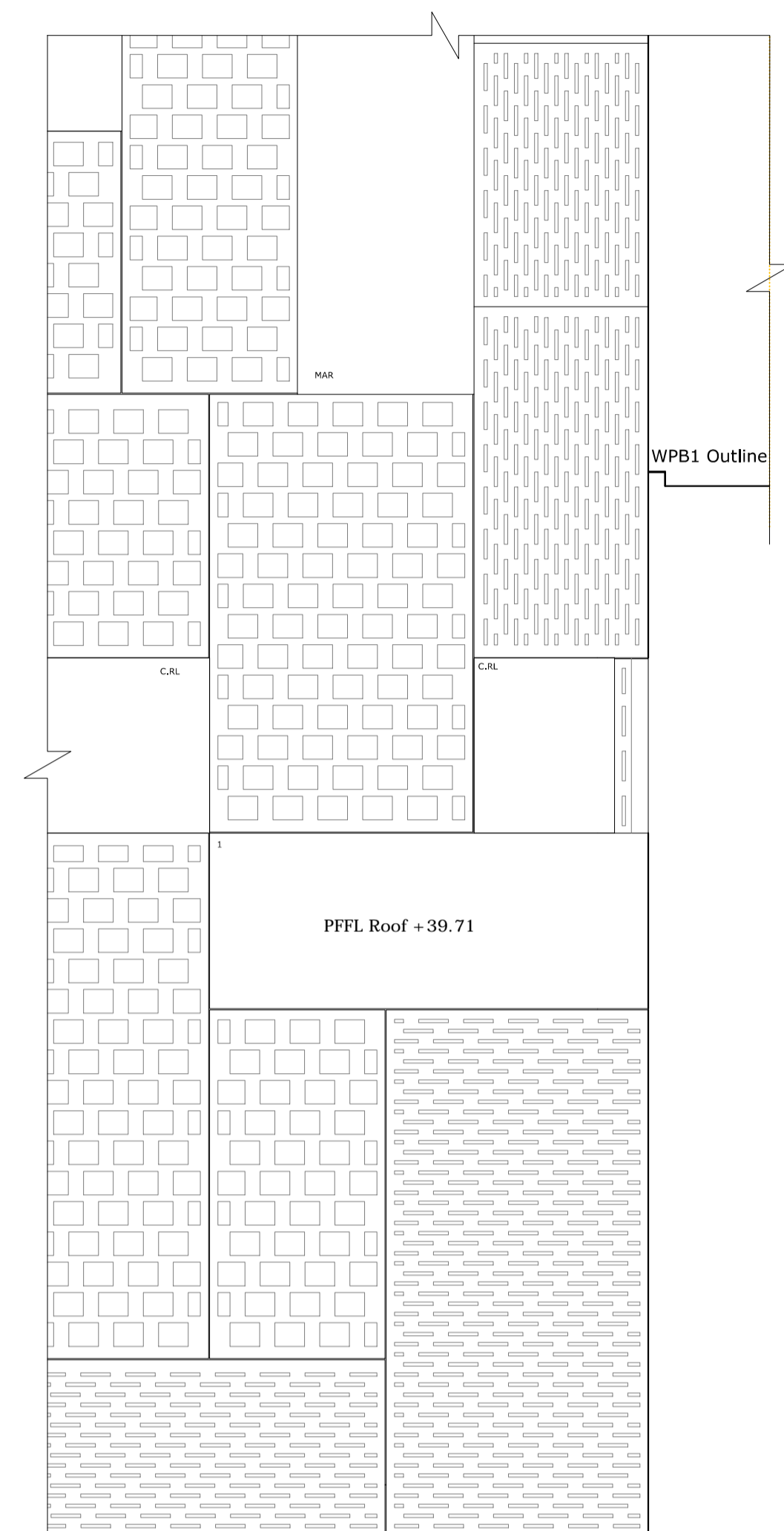


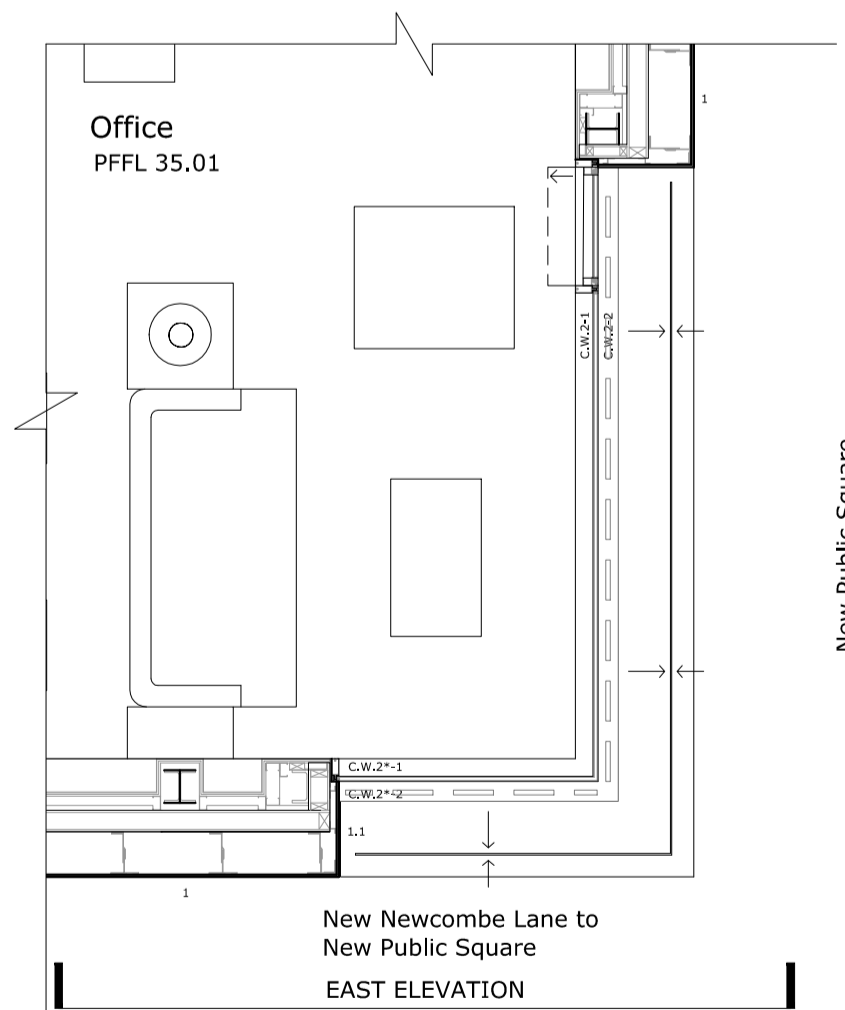
**East Elevation - Detail**  
1 : 50



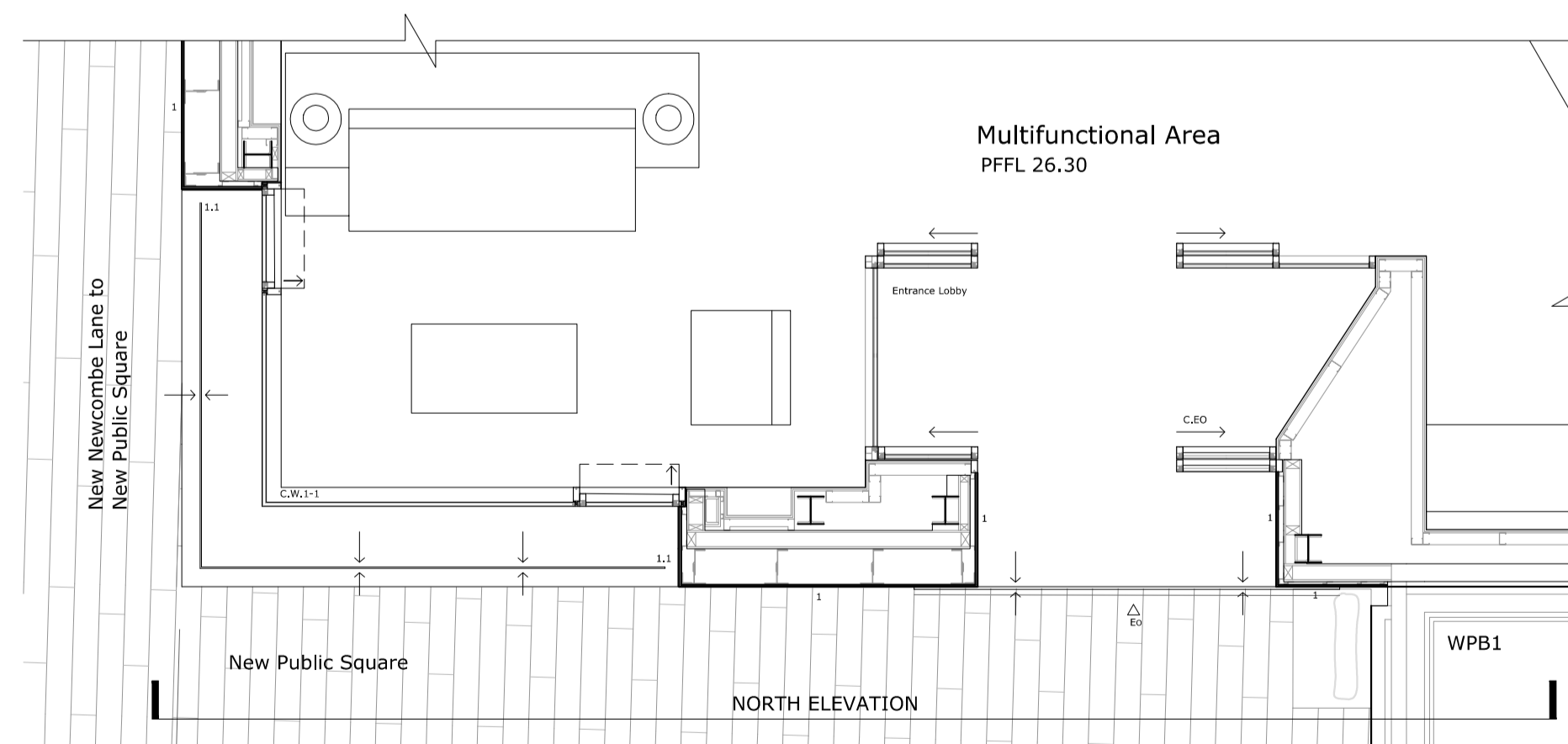
**North Elevation - Detail**  
1 : 50



**Roof - Plan Detail**  
1 : 50



**Level 02 - Plan Detail**  
1 : 50



**Ground Floor - Plan Detail**  
1 : 50

**Building & Site References:**

- CB Corner Building : Central Form & East Form
- NHG Notting Hill Gate Building
- KCS1 Kensington Church Street Building 1
- KCS2 Kensington Church Street Building 2
- WPB1 West Perimeter Building 1
- WPB2 West Perimeter Building 2 - Cube
- WPB3 West Perimeter Building 3
- New Public Square - New Publicly Accessible Open Space

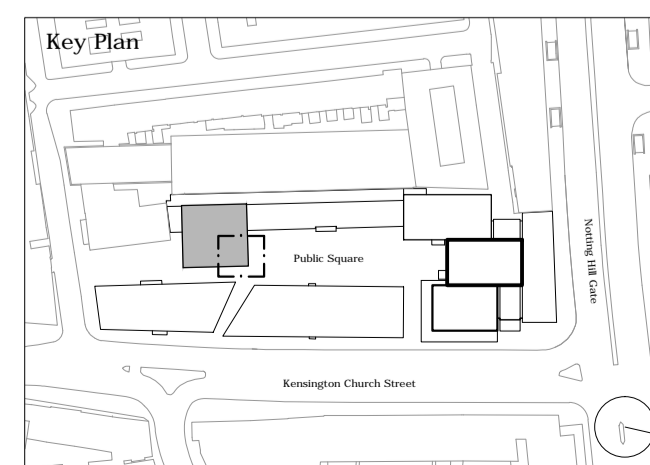
**Material References:**

- Corian:** Opaque and perforated panels with overlapping joints. Deep opening reveals with drainage slot for sills. All edges between vertical wall cladding and horizontal roof cladding to be welded (no joint). All fixings to be concealed. Colour: white range. Decision to be informed by large sample.
- Metal:** Glazing frames to be black. All visually exposed metal elements including frames to windows, doors, panels and cladding panels to match in colour.
- Glass:** Low iron glass to maximise transparency. The glass specification will vary according to the location and safety requirements.

**Facade Elements**

- C.W.1-1 Continuous recessed vertical strip window. Clear double glazing, black metal frame with inward opening top tilt
- C.W.1-2 Perforated Corian cladding to provide transparency effect; all fixings to be concealed
- C.W.1\*-1 Continuous recessed vertical strip window. Clear double glazing, black metal frame, fixed glass panels
- C.W.1\*-2 Perforated Corian cladding to provide transparency effect; all fixings to be concealed
- C.W.2-1 Recessed window. Clear double glazing, black metal frame with inward opening top tilt
- C.W.2-2 Perforated Corian cladding to provide transparency effect; all fixings to be concealed
- C.W.2\*-1 Recessed window. Clear double glazing, black metal frame, fixed glass panels
- C.W.2\*-2 Perforated Corian cladding to provide transparency effect; all fixings to be concealed
- C.Eo Floor to ceiling glazed entrance sliding door and fixed side panel. Clear double glazing, black metal frame.
- C.RL Glass rooflight. Clear glass, recessed black metal frame, fixed panel.
- I Corian cladding
- I.1 Set back detail and deep reveal to opening; drainage slot to deep reveal sill. Note: All windows to feature deep reveals with depth varying from South Elevation to North Elevation
- MAR Maintenance Access Recess
- SL Soft Landscape
- WRT Water Attenuation Tank
- Ed Entrance Office

- Note:**
- Ground floor external textures shown are illustrative only and are not submitted for approval;
  - Retail signage shown is illustrative only and is not submitted for approval;
  - Internal layouts shown are illustrative only and are not submitted for approval;
  - References to "Retail" mean use for any purpose falling within any one or more of Use Classes A1, A2 and A3;
  - The label WA or WAC indicates only that the unit concerned could meet the requirements of Approved Document M. The applicant expects the local planning authority to require approval of a plan showing layouts and location of wheelchair accessible and adaptable units by way of condition;
  - Material textures are illustrated to indicate area of material only and sizes are illustrated indicatively and are not submitted for approval. The applicant expects the planning authority to require approval of external materials by way of condition;
  - External materials (including landscape) are shown for illustrative purposes only and are not submitted for approval. The applicant expects the planning authority to require approval of external materials by way of condition.
  - All illustrated construction components/systems are design intent only and subject to further design development.



**Key:**

- C.W.2-1 Windows, clear glazing panels, fixed or openable; Frame: black finish
- Corian cladding Type 1: solid panel, colour: White
- Corian cladding Type 2: perforated panel, small slot shaped perforations to achieve transparency
- Corian cladding Type 3: perforated panel, big perforations to achieve transparency
- Stone finished building socle, min 50mm above exterior pavement; finish: black.
- Corian cladding expansion joints

**General Notes:**

- Do not scale from drawings.
- All omissions and discrepancies to be reported to the architect immediately.
- This drawing is to be read in conjunction with all relevant Architectural drawings and documents, and consultants' information.
- All structural information is to structural consultant design and information.
- All services and fire strategy information is to service and fire consultants' design and information.
- All dimensions must be verified on the site.
- The contents of the drawing are Urban Sense Consultant Architects Ltd copyright and shall not be re-used without their written permission.
- Information on existing buildings on the site and its immediate context along its boundary is as per survey information by Sterling Survey Ltd.
- All heights given are AOD.
- Information on the wider site context is as per OS map in plan and Z mapping for massing/3D information.
- LUL station is as per LUL survey of installations - ref. URS overlay of LUL survey info with Sterling Survey info. Where survey information was unavailable from LUL, station is illustrated indicatively based on Arup modelling of historic archive info.
- 145 Kensington Church Street is illustrated as per approved planning drawings - indicative representation only.

Rev.	Date	Details	Drawn/Checked	project/client	project no.
A	09.07.18	GLA call in amendments	AL VB/DL	NH&KCS Notting Hill Gate KCS Ltd.	1059
				dwg. no. P-WPB2-AA(4)-400	rev. scale A 1/50@A1
				drawing title Proposed WPB2 - Cube	date 06/09/17
				Corner Bay	drawn checked AS VB/DL
				Elevations, Plans	issued for Planning

