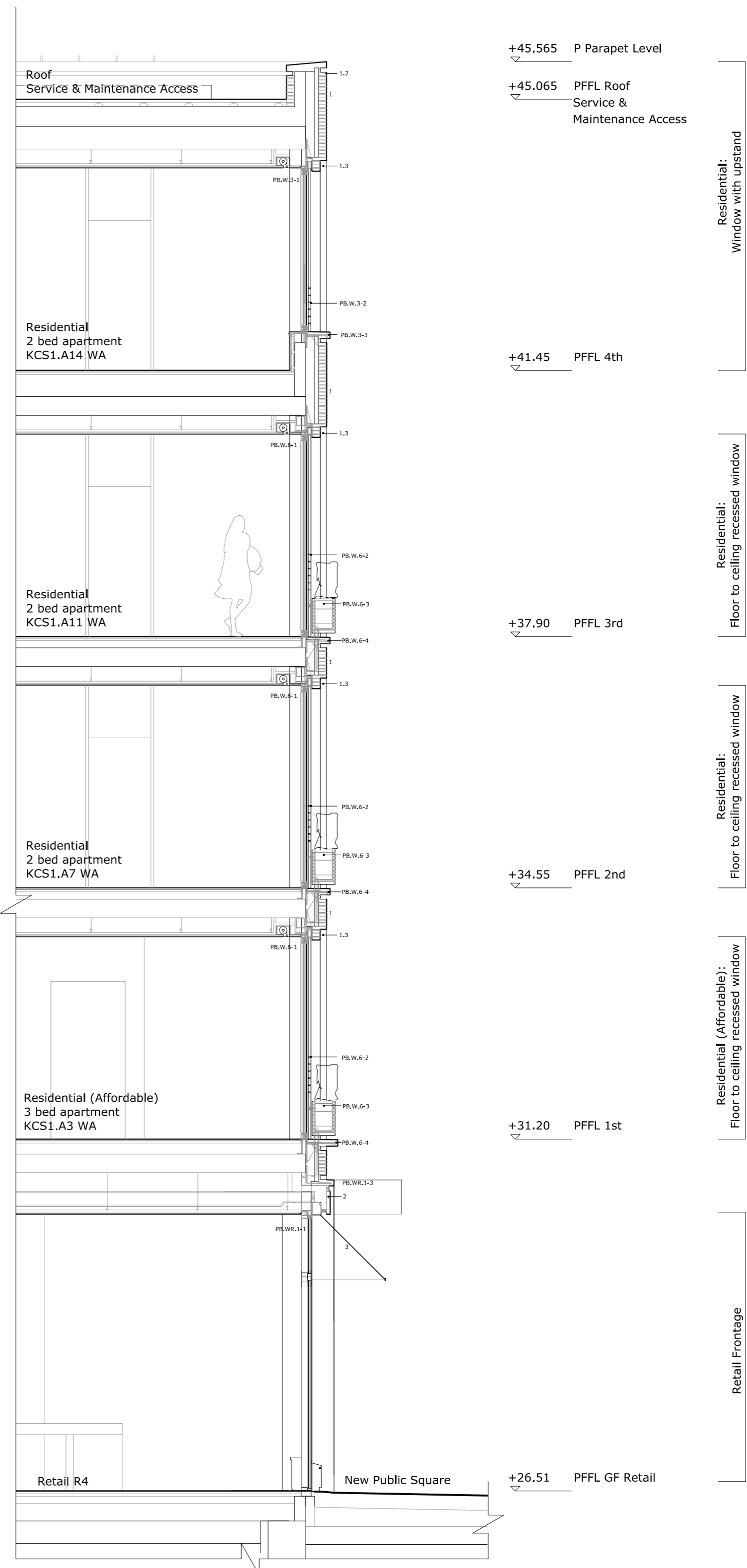


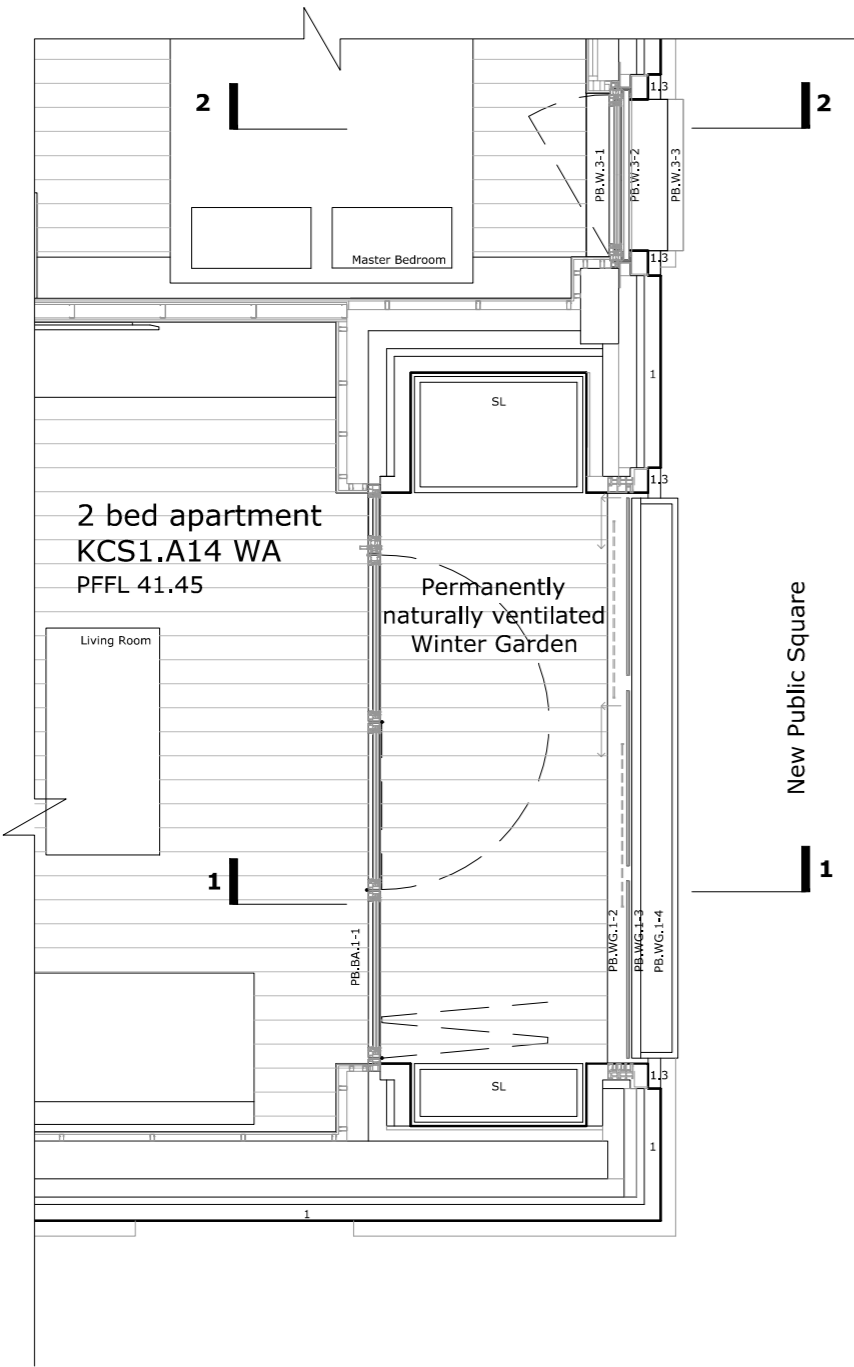
Proposed Section 1

1 : 50



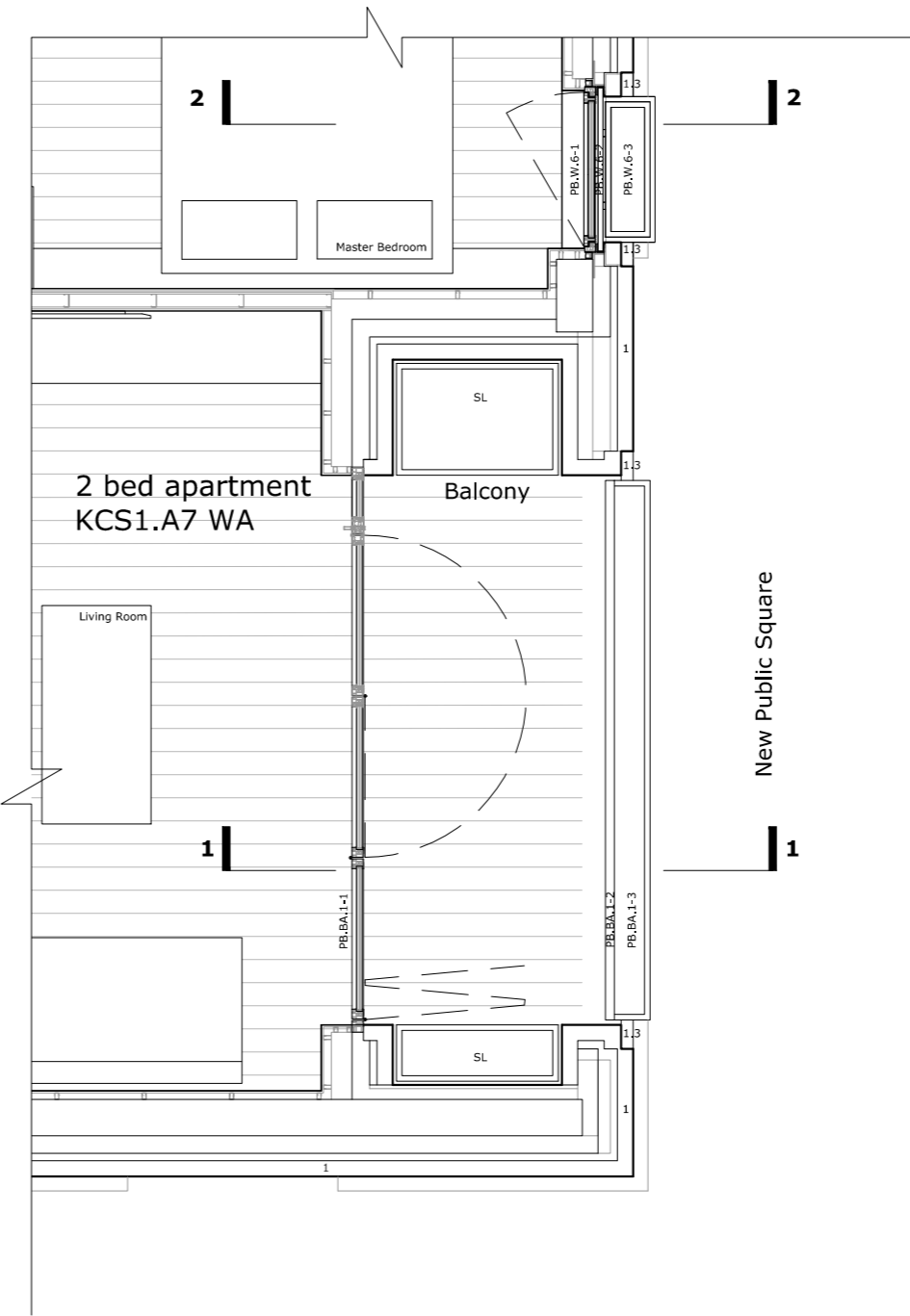
Proposed Section 2

1 : 50



Proposed Level 04 - Detail Plan

1 : 50



Proposed Level 02 - Detail Plan

1 : 50



Building & Site References:

- CB Corner Building : Central Form & East Form
- NHG Notting Hill Gate Building
- KCS1 Kensington Church Street Building 1
- KCS2 Kensington Church Street Building 2
- WPB1 West Perimeter Building 1 - Cube
- WPB2 West Perimeter Building 2 - Cube
- WPB3 West Perimeter Building 3
- New Public Square - New Publicly Accessible Open Space

Material References:

Brick:
Long format clay brick.
Special brick formats in locations to deliver architectural details.
Colour: to be tested in range of warm greys, nearly white through to brown/ yellow gaunt.
Decision to be informed by large sample including mortar setting.

Metal:
Frames to be rich dark patinated aluminium bronze.
All visually exposed metal elements including frames to windows, doors, panels and cladding panels to match in colour.

Glass:
Low iron glass to maximise transparency.
The glass specification will vary according to the location and safety requirements.

Facade Elements:

- PB.WG.1-1 Outer skin to WG - fixed glazing to top with glass to glass top corner to define glazed insert within the building form
- PB.WG.1-2 Outer skin to WG - sliding glazed panels to outer skin
- PB.WG.1-3 Metal balustrade with integrated fixing to vertical profile
- PB.WG.1-4 Metal clad planter, integrated fixing to vertical profile; planter to have drainage system and automated irrigation
- PB.WG.1-5 Metal cladding to top support structure of WG sliding panels
- PB.BA.1-1 Set back sliding/ folding triple glazed doors with dark metal frame
- PB.BA.1-2 Metal balustrade with integrated fixing to vertical profile
- PB.BA.1-3 Metal clad planter, integrated fixing to vertical profile; planter to have drainage system and automated irrigation
- PB.BA.1-4 Brick clad planter, integrated fixing to vertical profile; planter to have drainage system and automated irrigation

- PB.WR.1-1 Retail front window, fixed double glazing and operable double glazed entrance doors with metal handle detail
- PB.WR.1-2 Metal upstand with shadow gap detail
- PB.WR.1-3 Retail front window deep reveal to opening defined by projected edge detail
- PB.W.3-1 Window with upstand; dark metal frame to triple glazing with inward opening tilt and turn
- PB.W.3-2 Metal balustrade with concealed fixing integrated into shadow gap detail
- PB.W.3-3 Projected window brick sill
- PB.W.6-1 Floor to ceiling recessed window; dark metal frame to triple glazing with inward opening tilt and turn
- PB.W.6-2 Metal balustrade with concealed fixing integrated into shadow gap detail.
- PB.W.6-3 Brick finished projected planter; planter to have drainage system and automated irrigation
- PB.W.6-4 Projected window brick sill

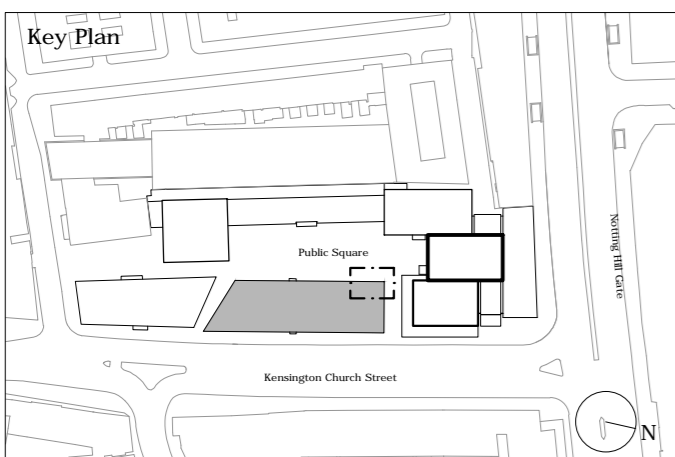
- 1 Long format clay brick, Special brick formats in locations to deliver architectural details
- 1.1 Brick sill; Colour: to match general brick
- 1.2 Shadow gap detail
- 1.3 Set back detail and deep reveal to opening
- 2 Retractable awning - concealed when closed
- 3 Metal roof
- 4 Metal cladding
- 5 Metal roof
- ERT Entrance Retail
- SL Soft Landscape
- NT New Tree

General Notes:

- Do not scale from drawings.
- All omissions and discrepancies to be reported to the architect immediately.
- This drawing is to be read in conjunction with all relevant Architectural drawings and documents, and consultants' information.
- All structural information is to structural consultant design and information.
- All services and fire strategy information is to service and fire consultants' design and information.
- All dimensions must be verified on the site.
- The contents of the drawing are Urban Sense Consultant Architects Ltd copyright and shall not be re-used without their written permission.
- Information on existing buildings on the site and its immediate context along its boundary is as per survey information by Sterling Survey Ltd.
- All heights given are AOD.
- Information on the wider site context is as per OS map in plan and Z mapping for massing/3D information.
- LUL station is as per LUL survey of installations - ref. URS overlay of LUL survey info with Sterling Survey info. Where survey information was unavailable from LUL, station is illustrated indicatively based Arup modelling of historic archive info.
- 145 Kensington Church Street is illustrated as per approved planning drawings -indicative representation only.

Rev.	Date	Details	Drawn/Checked	project/client	project no.
A	09.07.18	GLA call in amendments	NV /VB-DL	NH&KCS	1059
				Notting Hill Gate KCS Ltd.	
				dwg. no. rev. scale	
				P-KCS1-AA(4)-401	A 1/50@A1
				date	
				Proposed KCS1	06/09/17
				drawn checked	
				Winter Garden Bay	AS VB/DL
				Section 1 & 2, Plans	
				Issued for	
				Planning	

- Note:**
- Ground floor external textures shown are illustrative only and are not submitted for approval.
 - Retail signage shown is illustrative only and is not submitted for approval.
 - Internal layouts shown are illustrative only and are not submitted for approval.
 - References to "Retail" mean use for any purpose falling within any one or more of Use Classes A1, A2 and A3;
 - The label WA or WAC indicates only that the unit concerned could meet the requirements of Approved Document M. The applicant expects the local planning authority to require approval of a plan showing layouts and location of wheelchair accessible and adaptable units by way of condition;
 - Material textures are illustrated to indicate area of material only and sizes are illustrated indicatively and are not submitted for approval. The applicant expects the planning authority to require approval of external materials by way of condition;
 - External materials (including landscape) are shown for illustrative purposes only and are not submitted for approval. The applicant expects the planning authority to require approval of external materials by way of condition.
 - All illustrated construction components/systems are design intent only and subject to further design development.



urban sense
architects

Urban Sense Consultant Architects Ltd.
89 Wardour Street, 4th floor
London W1F 0UB t: 020 7436 9707
www.urbansense-architects.co.uk
©Urban Sense Consultant Architects Ltd.