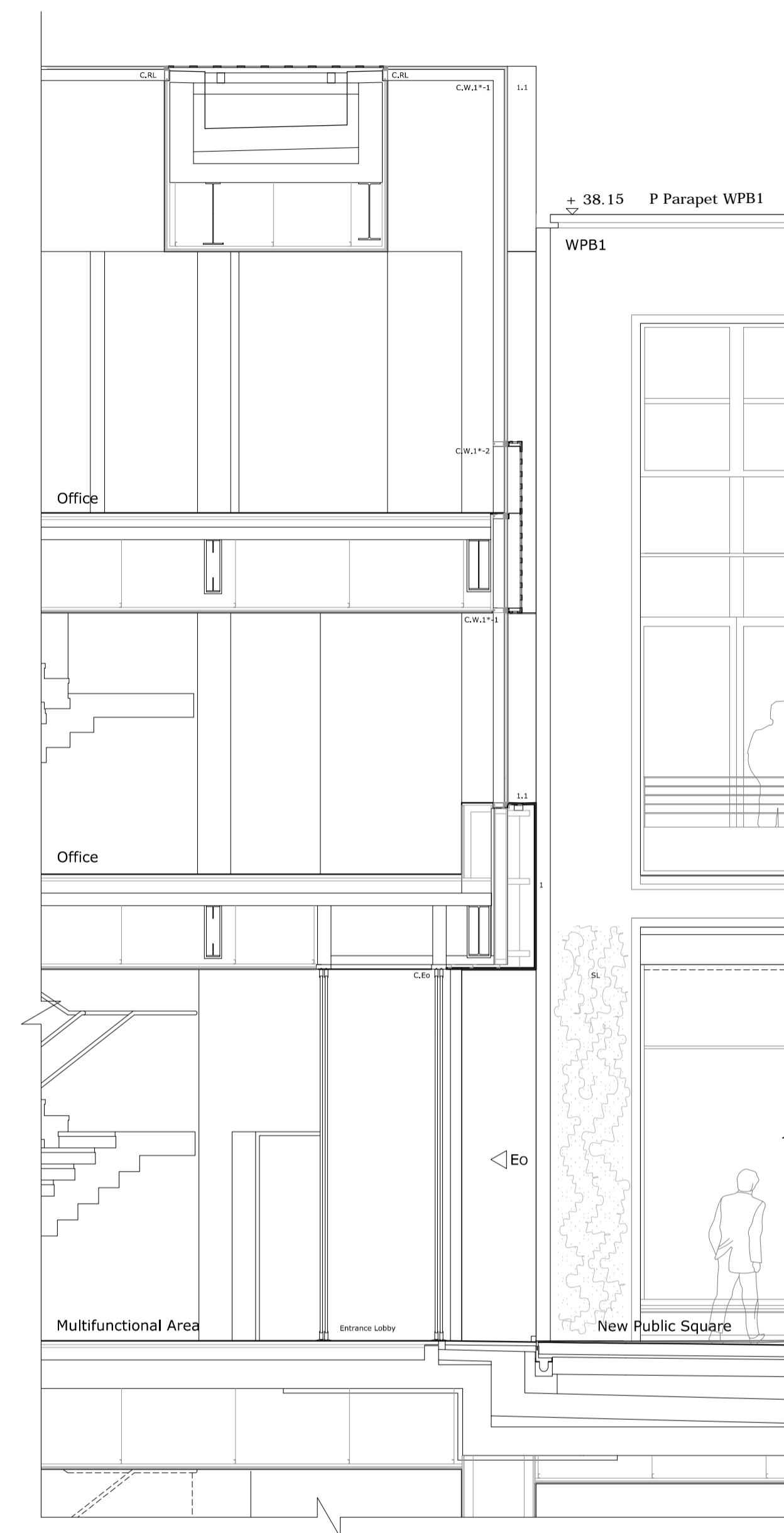


Section A-A
1 : 50



Section B-B
1 : 50



Building & Site References:

- CB Corner Building : Central Form & East Form
- NHG Notting Hill Gate Building
- KCS1 Kensington Church Street Building 1
- KCS2 Kensington Church Street Building 2
- WPB1 West Perimeter Building 1
- WPB2 West Perimeter Building 2 - Cube
- WPB3 West Perimeter Building 3
- New Public Square - New Publicly Accessible Open Space

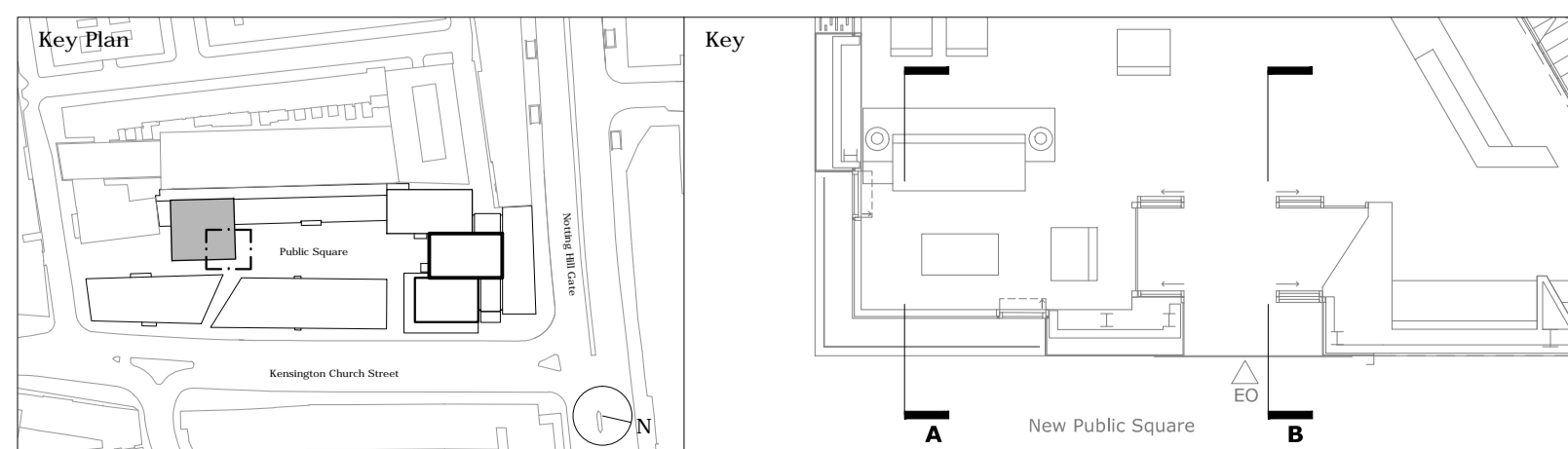
Material References:

- Corian:**
Opaque and perforated panels with overlapping joints.
Deep opening reveals with drainage slot for sills.
All edges between vertical wall cladding and horizontal roof cladding to be welded (no joint).
All fixings to be concealed.
Colour: white range. Decision to be informed by large sample.
- Metal:**
Glazing frames to be black.
All visually exposed metal elements including frames to windows, doors, panels and cladding panels to match in colour.
- Glass:**
Low iron glass to maximise transparency.
The glass specification will vary according to the location and safety requirements.

Facade Elements

- | | | | |
|----------|---|------|--|
| C.W.1-1 | Continuous recessed vertical strip window. Clear double glazing, black metal frame with inward opening top tilt | C.Eo | Floor to ceiling glazed entrance sliding door and fixed side panel. Clear double glazing, black metal frame. |
| C.W.1-2 | Perforated Corian cladding to provide transparency effect: all fixings to be concealed | C.RL | Glass rooflight
Clear glass, recessed black metal frame, fixed panel. |
| C.W.1*-1 | Continuous recessed vertical strip window. Clear double glazing, black metal frame, fixed glass panels | 1 | Corian cladding
Set back detail and deep reveal to opening: drainage slot to deep reveal sill |
| C.W.1*-2 | Perforated Corian cladding to provide transparency effect: all fixings to be concealed | 1, 1 | Note: All windows to feature deep reveals with depth varying from South Elevation to North Elevation |
| C.W.2-1 | Recessed window. Clear double glazing, black metal frame with inward opening top tilt | SL | Soft Landscape |
| C.W.2-2 | Perforated Corian cladding to provide transparency effect: all fixings to be concealed | WRT | Water Attenuation Tank |
| C.W.2*-1 | Recessed window. Clear double glazing, black metal frame, fixed glass panels | Eo | Entrance Office |
| C.W.2*-2 | Perforated Corian cladding to provide transparency effect: all fixings to be concealed | | |

- Note:**
- Ground floor external textures shown are illustrative only and are not submitted for approval;
 - Retail signage shown is illustrative only and is not submitted for approval;
 - Internal layouts shown are illustrative only and are not submitted for approval;
 - References to "Retail" mean use for any purpose falling within any one or more of Use Classes A1, A2 and A3;
 - The label WA or WAC indicates only that the unit concerned could meet the requirements of Approved Document M. The applicant expects the local planning authority to require approval of a plan showing layouts and location of wheelchair accessible and adaptable units by way of condition;
 - Material textures are illustrated to indicate area of material only and sizes are illustrated indicatively and are not submitted for approval. The applicant expects the planning authority to require approval of external materials by way of condition;
 - External materials (including landscape) are shown for illustrative purposes only and are not submitted for approval. The applicant expects the planning authority to require approval of external materials by way of condition.
 - All illustrated construction components/systems are design intent only and subject to further design development.



General Notes:

- Do not scale from drawings.
- All omissions and discrepancies to be reported to the architect immediately.
- This drawing is to be read in conjunction with all relevant Architectural drawings and documents, and consultants' information.
- All structural information is to structural consultant design and information.
- All services and fire strategy information is to service and fire consultants' design and information.
- All dimensions must be verified on the site.
- The contents of the drawing are Urban Sense Consultant Architects Ltd copyright and shall not be re-used without their written permission.
- Information on existing buildings on the site and its immediate context along its boundary is as per survey information by Sterling Survey Ltd.
- All heights given are AOD.
- Information on the wider site context is as per OS map in plan and Z mapping for massing/3D information.
- LUL station is as per LUL survey of installations - ref. URS overlay of LUL survey info with Sterling Survey info. Where survey information was unavailable from LUL, station is illustrated indicatively based Arup modelling of historic archive info.
- 145 Kensington Church Street is illustrated as per approved planning drawings - indicative representation only.

Rev.	Date	Details	Drawn/Checked	project/client	project no.
A	09.07.18	GLA call in amendments	AL VB/DL	NH&KCS Notting Hill Gate KCS Ltd.	1059
				dwg. no. P-WPB2-AA(4)-401	rev. scale A 1/50@A1
				drawing title Proposed WPB2 - Cube	date 06/09/17
				Corner Bay	drawn checked AS VB/DL
				Sections	
				issued for Planning	

urban sense
ARCHITECTS

Urban Sense Consultant Architects Ltd.
89 Wandor Street, 4th floor
London W1F 0UB t:020 7436 9707
www.urbansense-architects.co.uk
©Urban Sense Consultant Architects Ltd.