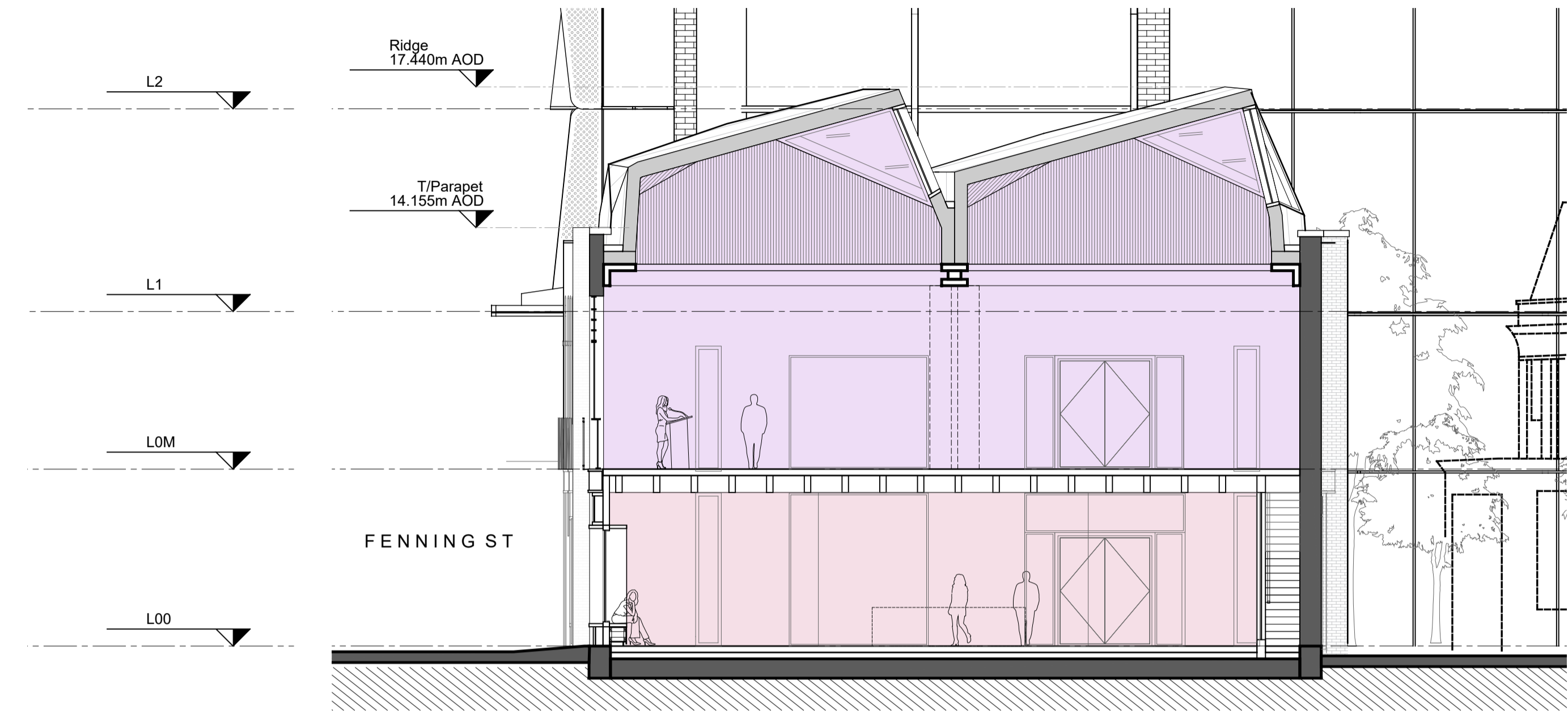
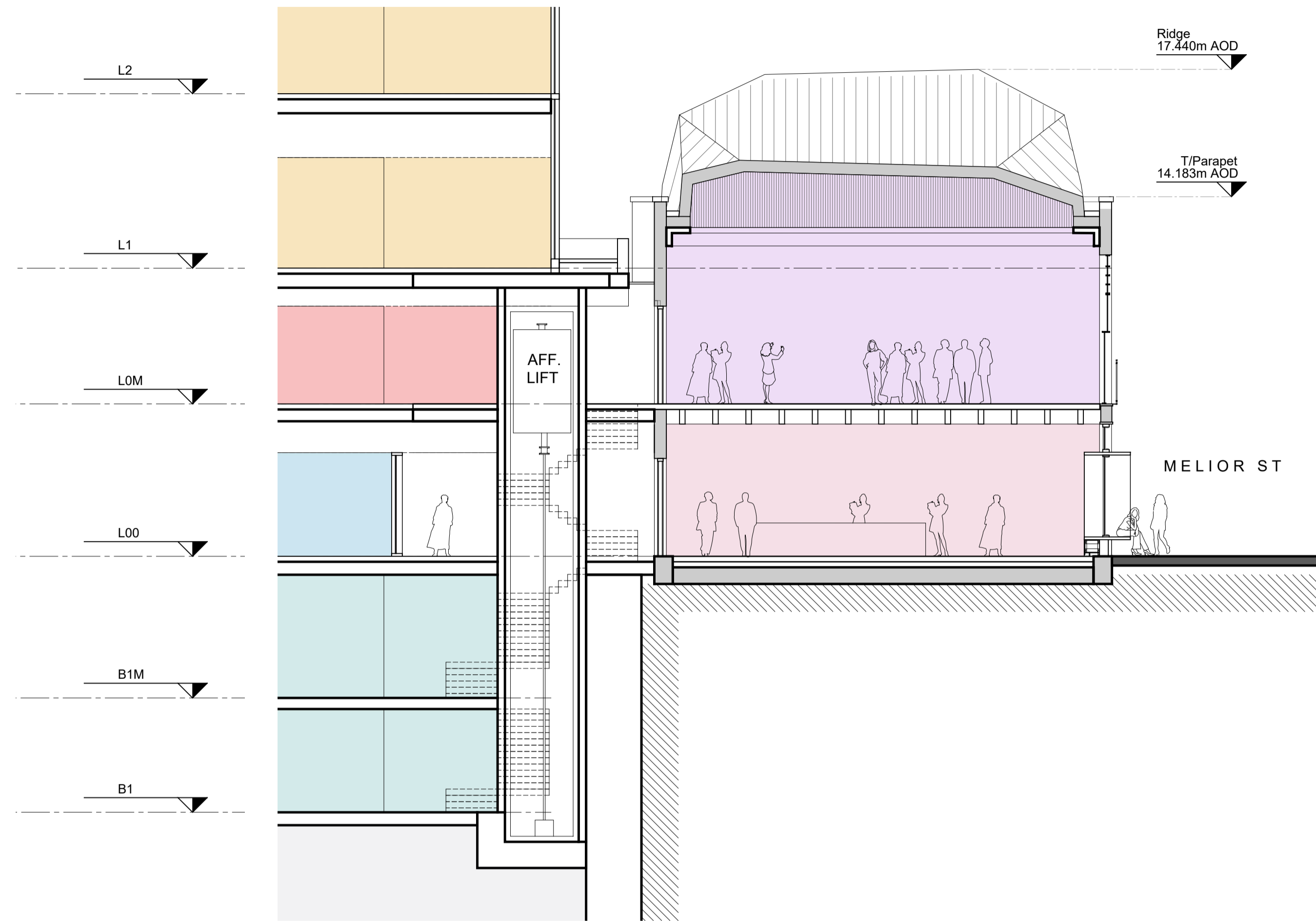


- NOTES:
- BASED ON SURVEY CONDUCTED DECEMBER 2018
 - NOT FOR CONSTRUCTION
 - SITE CONDITION TO BE VERIFIED PRIOR TO CONSTRUCTION



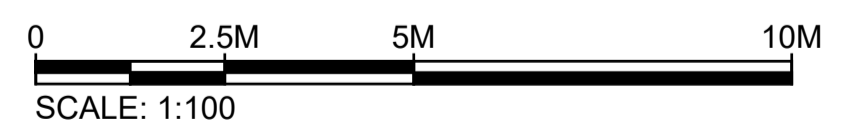
1 SECTION YY
SCALE: 1:100

2 SECTION ZZ
SCALE: 1:100

DRAWINGS TO BE PRINTED IN COLOUR

KEY:

- APPLICATION BOUNDARY
- B1(a) OFFICE
- B1 AFFORDABLE WORKSPACE
- D1/ B1(b) AFFORDABLE WORKSPACE
- D1 COMMUNITY HALL
- SHARED AFFORDABLE WORKSPACE/ COMMUNITY HALL LOBBY
- A1 - A4 RETAIL
- D1 MEDICAL/ B1(b) RESEARCH AND DEVELOPMENT
- BICYCLE FACILITIES
- PLANT
- TERRACE



KPF

**Vinegar Yard
St. Thomas St
SE1 3QR**

Client
St. Thomas Bermondsey Ltd.
3rd Floor, 50 Jermyn Street,
London, SW1Y 6LX
Tel: 020 7667 7766

Environmental Consultant
Trium Environmental Consulting
68 - 85 Tabernacle Street
London, EC2A 4BD
Tel: 020 3887 7118

Building Services Consultant
Sweco
1 Bath Road
Maidenhead, SL6 4AQ
Tel: 016 2862 3423

Townscape Consultant
Montagu Evans
5 Bolton St
London, W1J 8BA
Tel: 020 7493 4002

Planning Consultant
Montagu Evans
5 Bolton St
London, W1J 8BA
Tel: 020 7493 4002

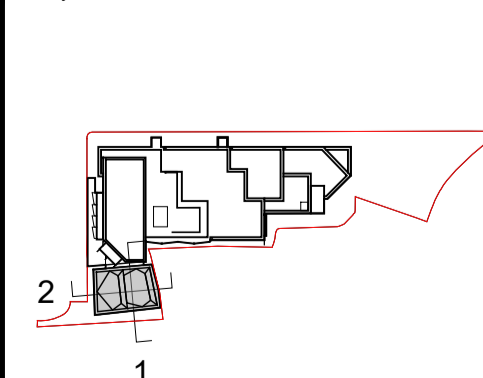
Transport Consultant
Caneparo Associates
21 Little Portland Street
London, W1W 8BT
Tel: 020 3617 8200

Structural Consultant
AKT II
White Collar Factory
1 Old Street Yard
London, EC1Y 8AF
Tel: 020 7250 7777

Cost Consultant
Arcadis
Arcadis House, 34 York Way
London, N1 9AB
Tel: 0 20 7812 2099

No.	Issue	Check	Date
00	Planning Issue	AF	Oct 2021

Key Plan



**Kohn Pedersen Fox Associates
(International) PA**
Architects and Planning Consultants

7a Langley Street
London WC2H 9JA
England
T: +44 (0) 20 3119 5300
F: +44 (0) 20 7497 1175
<http://www.kpf.com>

Proj. No. **2472** Project **Vinegar Yard**

Scale **1:100 @ A1** Drawn by **SD** Checked by **AF**

Drawing Title and No.
**WAREHOUSE
PROPOSED
SECTION YY & ZZ**

No. **PA-416** Rev. **00**