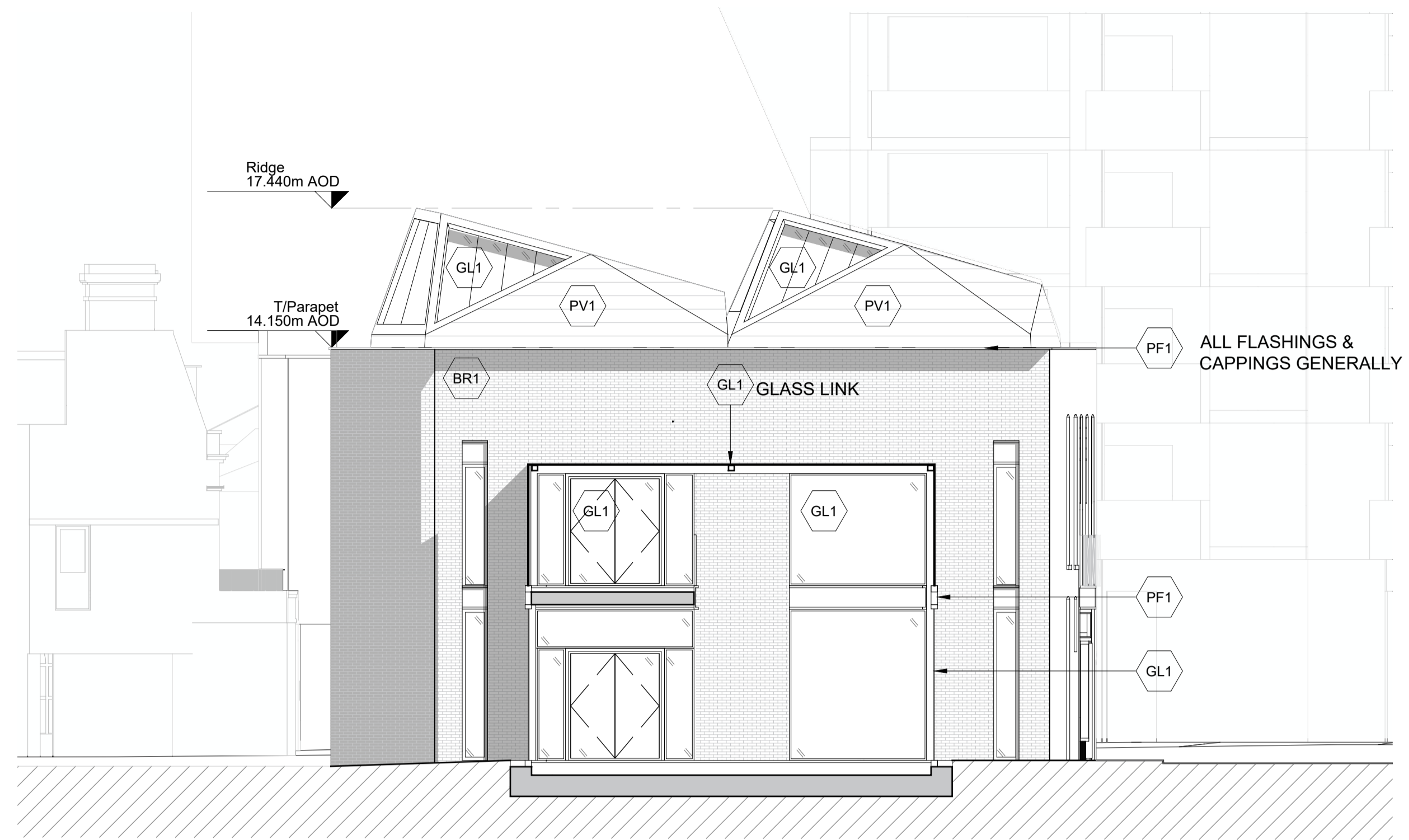
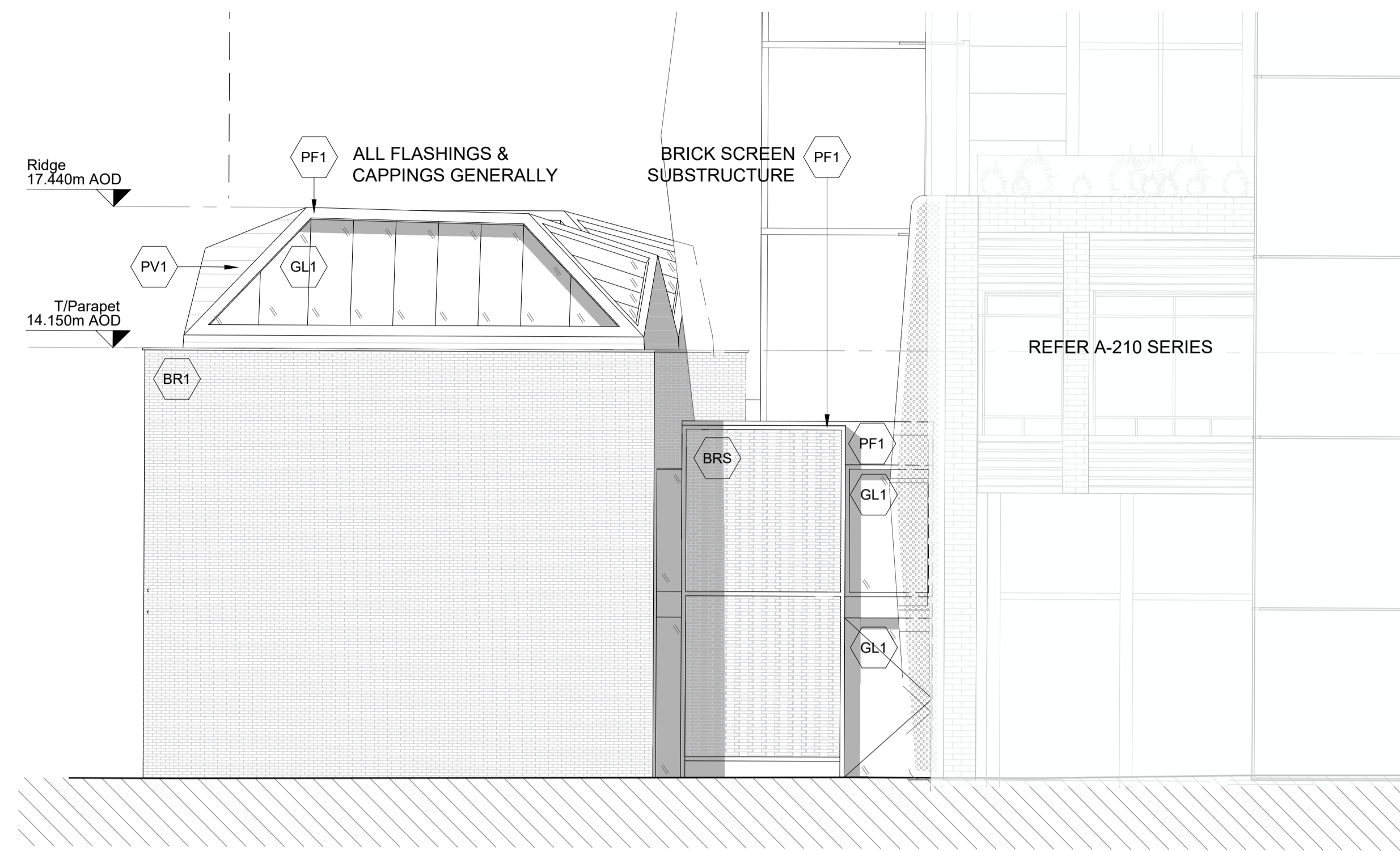


- NOTES:
- BASED ON SURVEY CONDUCTED DECEMBER 2018
  - NOT FOR CONSTRUCTION
  - SITE CONDITION TO BE VERIFIED PRIOR TO CONSTRUCTION



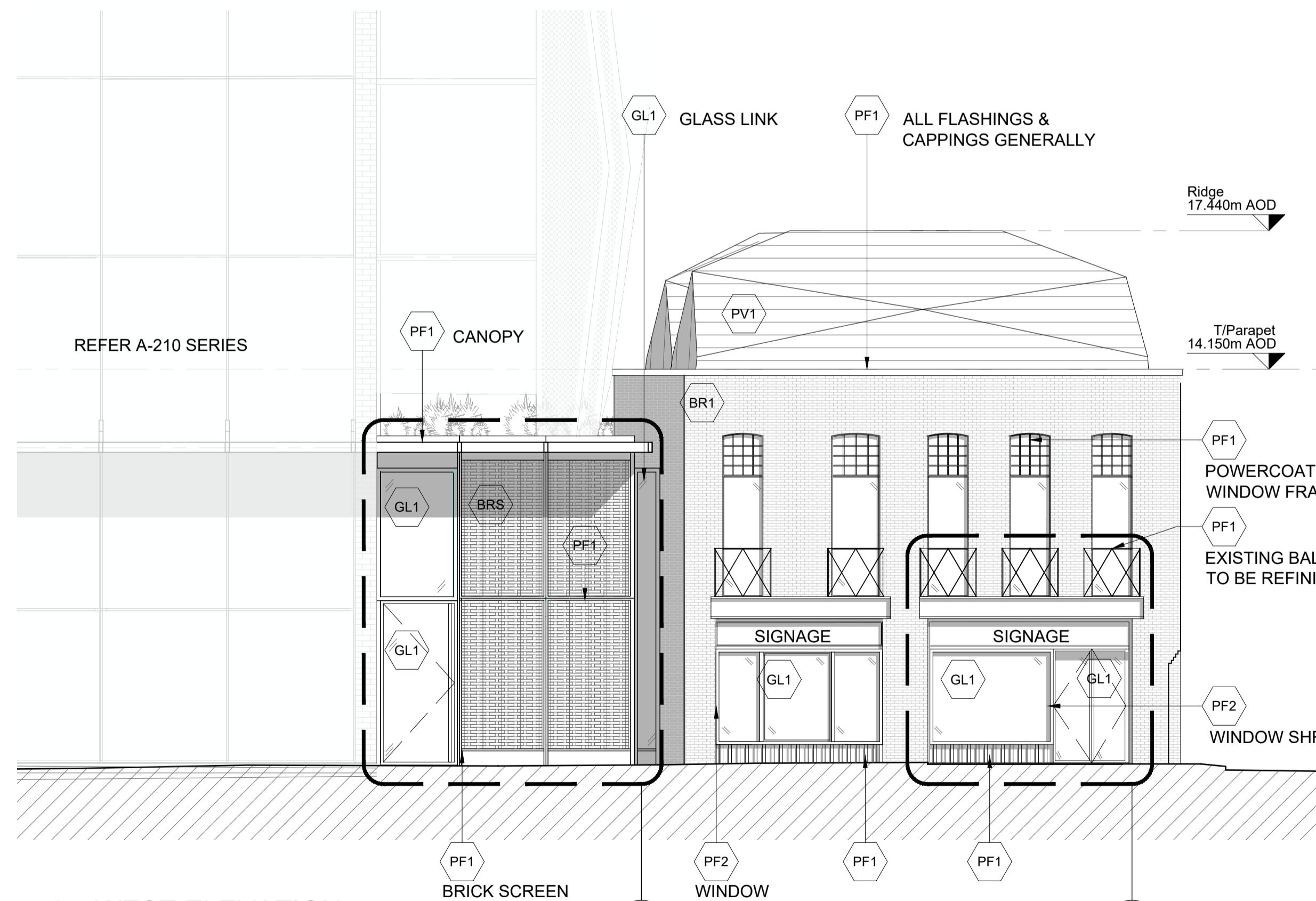
**1 NORTH ELEVATION**  
SCALE: 1:100



**2 EAST ELEVATION**  
SCALE: 1:100

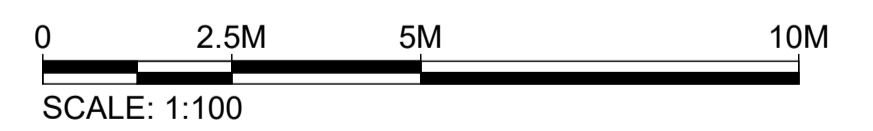


**3 SOUTH ELEVATION**  
SCALE: 1:100



**4 WEST ELEVATION**  
SCALE: 1:100

Tag	Material
PF1	DARK CHARCOAL GREY FINISH METAL
PF2	DARK PAINTED METAL
GL1	CLEAR GLAZING. FRAMES AND MULLION TO MATCH PF1
BR1	EXISTING BRICK STRIPPED - NEW BRICK TO MATCH
BRS	BRICK SCREEN TO MATCH EXISTING BRICK FINISH
PV1	SOLAR PANEL ROOF TILES IN DARK CHARCOAL GREY



**KPF**

**Vinegar Yard  
St. Thomas St  
SE1 3QR**

**Client**  
St. Thomas Bermondsey Ltd.  
3rd Floor, 50 Jermyn Street,  
London, SW1Y 6LX  
Tel: 020 7667 7766

**Environmental Consultant**  
Trium Environmental Consulting  
68 - 85 Tabernacle Street  
London, EC2A 4BD  
Tel: 020 3887 7118

**Building Services Consultant**  
Sweco  
1 Bath Road  
Maidenhead, SL6 4AQ  
Tel: 016 2862 3423

**Townscape Consultant**  
Montagu Evans  
5 Bolton St  
London, W1J 8BA  
Tel: 020 7493 4002

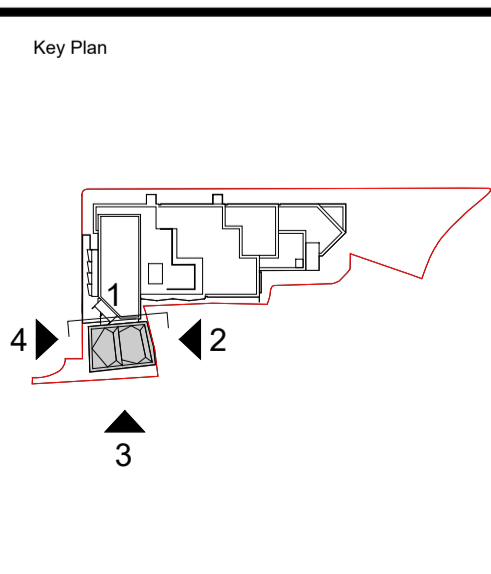
**Planning Consultant**  
Montagu Evans  
5 Bolton St  
London, W1J 8BA  
Tel: 020 7493 4002

**Transport Consultant**  
Caneparo Associates  
21 Little Portland Street  
London, W1W 8BT  
Tel: 020 3617 8200

**Structural Consultant**  
AKT II  
White Collar Factory  
1 Old Street Yard  
London, EC1Y 8AF  
Tel: 020 7250 7777

**Cost Consultant**  
Arcadis  
Arcadis House, 34 York Way  
London, N1 9AB  
Tel: 0 20 7812 2099

No.	Issue	Check	Date
00	Planning Issue	AF	Oct 2021



**Kohn Pedersen Fox Associates  
(International) PA**  
Architects and Planning Consultants  
  
7a Langley Street  
London WC2H 9JA  
England  
T: +44 (0) 20 3119 5300  
F: +44 (0) 20 7497 1175  
<http://www.kpf.com>

Proj. No.	Project
2472	Vinegar Yard
Scale	1:100 @ A1
Drawn by	SD
Checked by	AF
Drawing Title and No.	WAREHOUSE PROPOSED ELEVATIONS
No.	PA-415
Rev.	00