

St Thomas Street Landscape + Public Realm Strategy

Planning Application Addendum

October 2021

SPACEHUB

Landscape and Public Realm

Contents

1.0	Site and Context	5
2.0	Concept	11
3.0	Ground Level	15
4.0	Roof Level	33
5.0	Urban Greening	47
6.0	Drawings	51

Landscape and Public Realm

Introduction



GOODLUCK HOPE



LONDON WALL PLACE



THE GOODSYARD

This Landscape and Public Realm Report has been produced by Spacehub on behalf of St Thomas Bermondsey Ltd in support of the full planning application for St Thomas Street.

Spacehub is a landscape architecture, urban design and ecology practice base in East London; the practice is led by Giles Charlton and Tom Smith.

Since Spacehub's inception in 2010, they have delivered a number of high-quality mixed use projects at a range of scales, from major planning applications such as The Goodyard in Shoreditch to the on-site delivery of prominent public realm schemes such as London Wall Place in the City of London.

Spacehub design public realm and landscape that is specific and memorable. Their design process rigorously explores a site's complexities so they can amplify its unique qualities, ultimately delivering simple yet creative design solutions. This means listening and understanding; being responsive to site, nature, context and culture.

1.0 Site and Context

Landscape and Public Realm

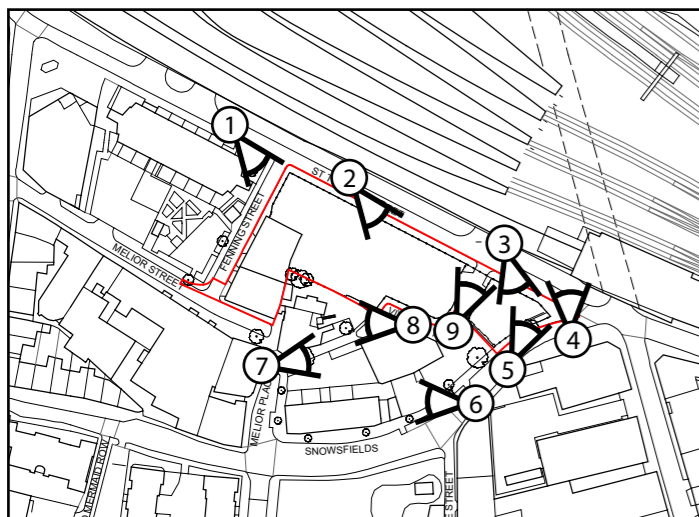
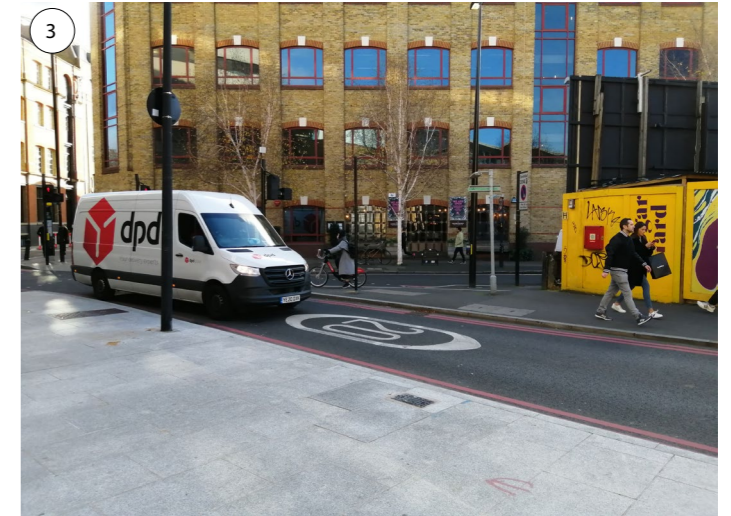
Site and Context

Local Character

Vinegar Yard sits between St. Thomas Street to the North and Snowfields Street to the South. To the West of the site is Guy's Hospital Campus, and London Bridge Station lies just across St. Thomas Street to the North.

Due to its central location and adjacency to public transit, the area is quite popular during the daytime as well as at night, and the site currently hosts an event area with food stalls and a vintage market.

- 1 View looking East along St. Thomas St.
- 2 View looking East from the corner of Fenning St.
- 3 View looking at corner of site facing Southeast
- 4 View from corner of Snowfields St. looking West
- 5 View from Snowfields St. looking North
- 6 View from Snowfields St. looking West
- 7 View from end of Melior Street looking East
- 8 View of Vinegar Yard alley facing West
- 9 View of Vinegar Yard alley facing North



KEY PLAN FOR VIEWS



Landscape and Public Realm

Site and Context

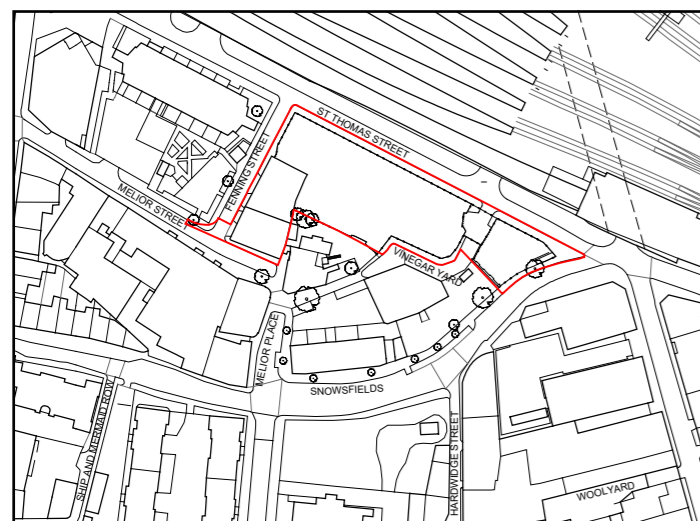
Local green spaces

The site is located on St Thomas Street, stretching between Fenning Street and Snowfields, approximately 300m to the east of the Shard, in the London Borough of Southwark

The immediate local context is dominated by the rail infrastructure and includes limited greenspace. Within the wider context are a number of open green spaces including Potters Fields and the associated river front walkway.

Legend

- The Site
- Local open space
- Metropolitan Open Land
- Site of Importance for Nature Conservation
- River Thames



EXISTING SITE PLAN + APPLICATION BOUNDARY



Landscape and Public Realm

Site and Context

Transport for London Healthy Streets

Transport for London's Healthy Streets initiative aims to encourage sustainable forms of transport and promote healthy living by designing streets to include amenities such as street trees, seating, cycle lanes, and wide pedestrian footpaths.



Landscape and Public Realm

Site and Context













St Thomas Street East Framework

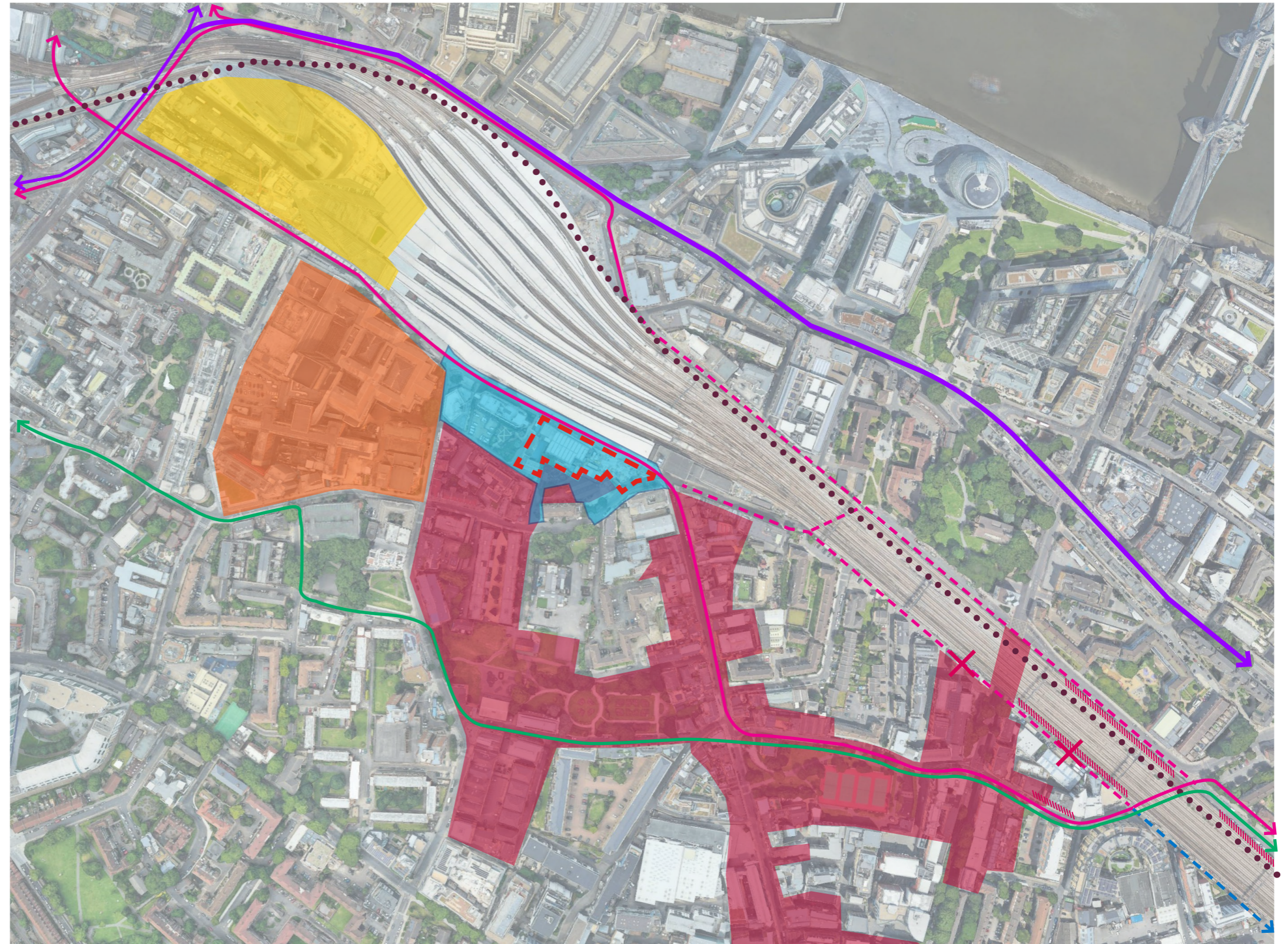
The proposal sits near London Bridge Quarter and within the area of the St. Thomas Street East framework, an initiative by 4 local landowners which aims to enhance pedestrian connectivity and create a vibrant corridor along length of St. Thomas Street. This framework is explored in more detail in chapter 3 of KPF's Design and Access Statement.

The site is well served by public transport, with London Bridge station sitting just to the North, and several bus routes and cycle networks nearby.

Other notable features nearby include the adjacent Guy's Hospital Campus, as well as the Low Line and the Bermondsey St. Conservation Area.

Legend

-  The Site
-  Pedestrian Link
-  Missing Pedestrian Link
-  No Through Way
-  No Through Way
-  C4 Cycle Route
-  Bus Routes
-  The Low Line
-  St. Thomas Street East Framework
-  London Bridge Quarter
-  Guy's Hospital Campus
-  Bermondsey Street Conservation Area



Landscape and Public Realm

Concept

VISION

Vinegar Yard development sits within the wider framework masterplan area of St Thomas Street East.

The key objectives of the Framework are:

- To establish St. Thomas Street as a boulevard of prime importance
- To create effective public spaces at either end of this stretch of St. Thomas Street
- To promote urban greening
- To understand the historic pattern of alleys and courtyards in the area
- To enable north-south links

The landscape proposals have been developed in line with the following outline principles established in the masterplan framework document:

1. A collaborative, cohesive approach across all four sites whilst retaining distinctive characters;
2. Understanding and enforcing the importance of public realm – new quarter, active, appealing, intriguing, high quality;
3. Landscape informed by the earlier, historical, street patterns e.g. John Rocque's Map of London 1746 – inns, yards and alleyways (surprising, intriguing). 4. Also informed by 'engineered' street pattern imposed by trains, railway arches and Victorian revolution (north side of St Thomas Street);
5. High quality natural stone paving which responds to its heritage – robust, textural, layered;
6. Celebrating St Thomas Street East as a walking destination; reducing traffic flow, pedestrian focus, slower paced environment;
7. A flowing landscape, i.e. not subservient to building grids etc; permeability through new alleyways with glimpses to new planting creating a sense of intrigue and exploration;
8. Celebrate thresholds/connections with landscape features such as 'over-large' paving elements and specimen trees;
9. New planting as focus for new public spaces – informal, abundant parkland / woodland character instead of formal layouts.

Vinegar Yard will sit within the wider St Thomas Street East developments. Strategies for circulation, tree planting and material palettes have been considered as a whole across the masterplan.

The Vinegar Yard proposals build on these strategies outlined within Framework document.

St Thomas Street will provide a clear route between Bermondsey St and London Bridge Station. These proposals have been developed in consultation with Transport for London, with the aims of improving the pedestrian experience, reducing air pollution, and encouraging sustainable transport methods in line with the Healthy Streets Approach.

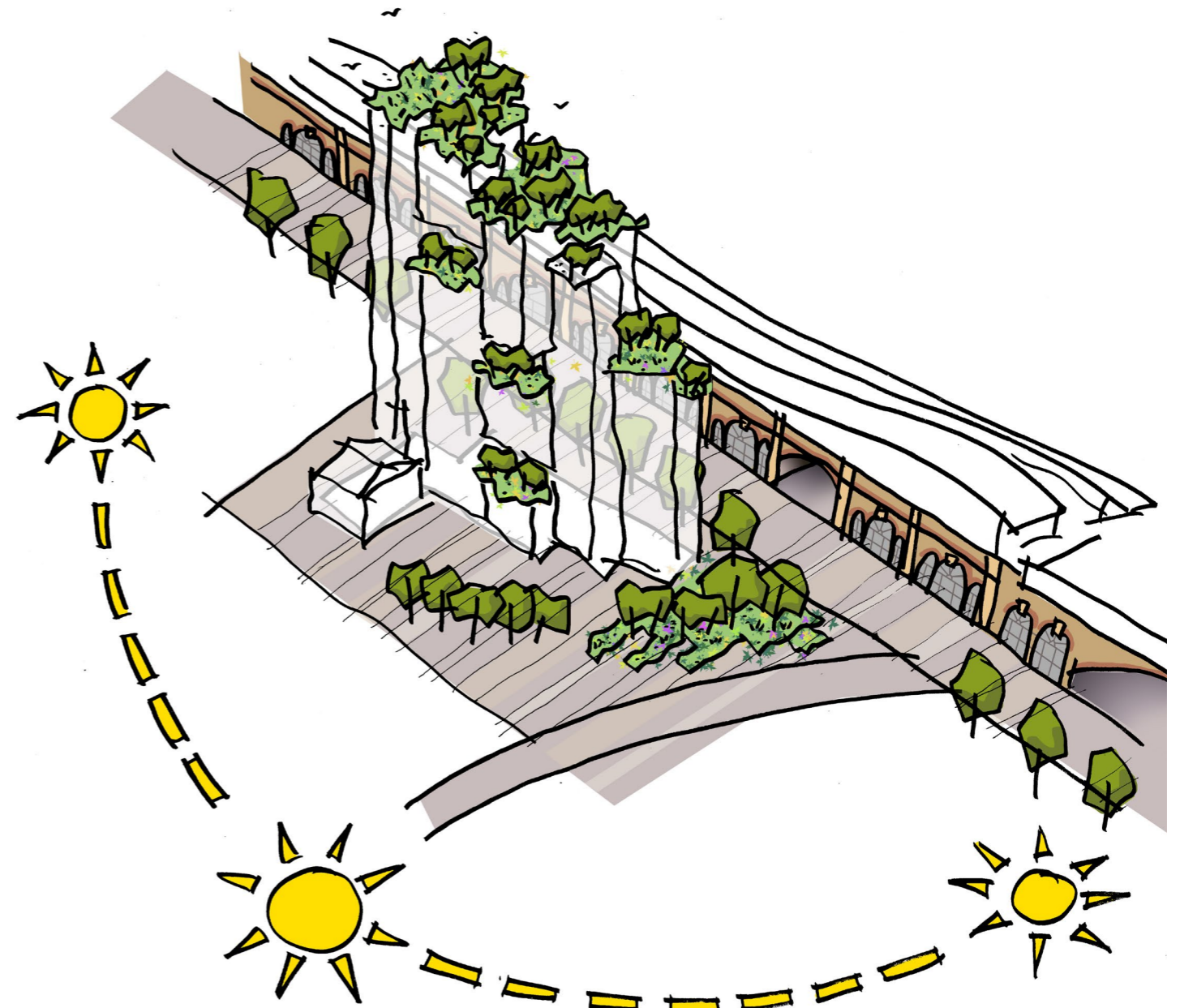
Footpaths are designed to minimise street clutter and maintain a minimum clear width of 2.0m.

Vinegar Yard will respond to the anticipated future desire-lines coming from new routes between Bermondsey Street, St Thomas Street and Melior Place.

The landscape for Vinegar Yard has been designed to read as part of the St Thomas Street setting, developed to integrate with surrounding emerging developments.



John Rocque map - 1746



Concept sketch

Landscape and Public Realm Concept



THE VISION

AN INTEGRATED APPROACH TO COMPLEMENT THE ST THOMAS STREET EAST DESIGN FRAMEWORK

A CONNECTED PUBLIC REALM

- Creation of a permeable, safe, legible, new public realm
- High quality transformation of the streetscape
- Clutter free
- Urban greening enhancement



A NEW GARDEN

- Delivering a new green open space for the community
- A place of respite and informal relaxation
- Ecology + biodiversity enhancement
- A distinctive new green space that brings a little bit of nature to this dense urban context

Overview showing the proposals in the current context with the submitted Edge scheme, and the consented Capital House scheme

3.0 Ground Level

Landscape and Public Realm

Ground Level

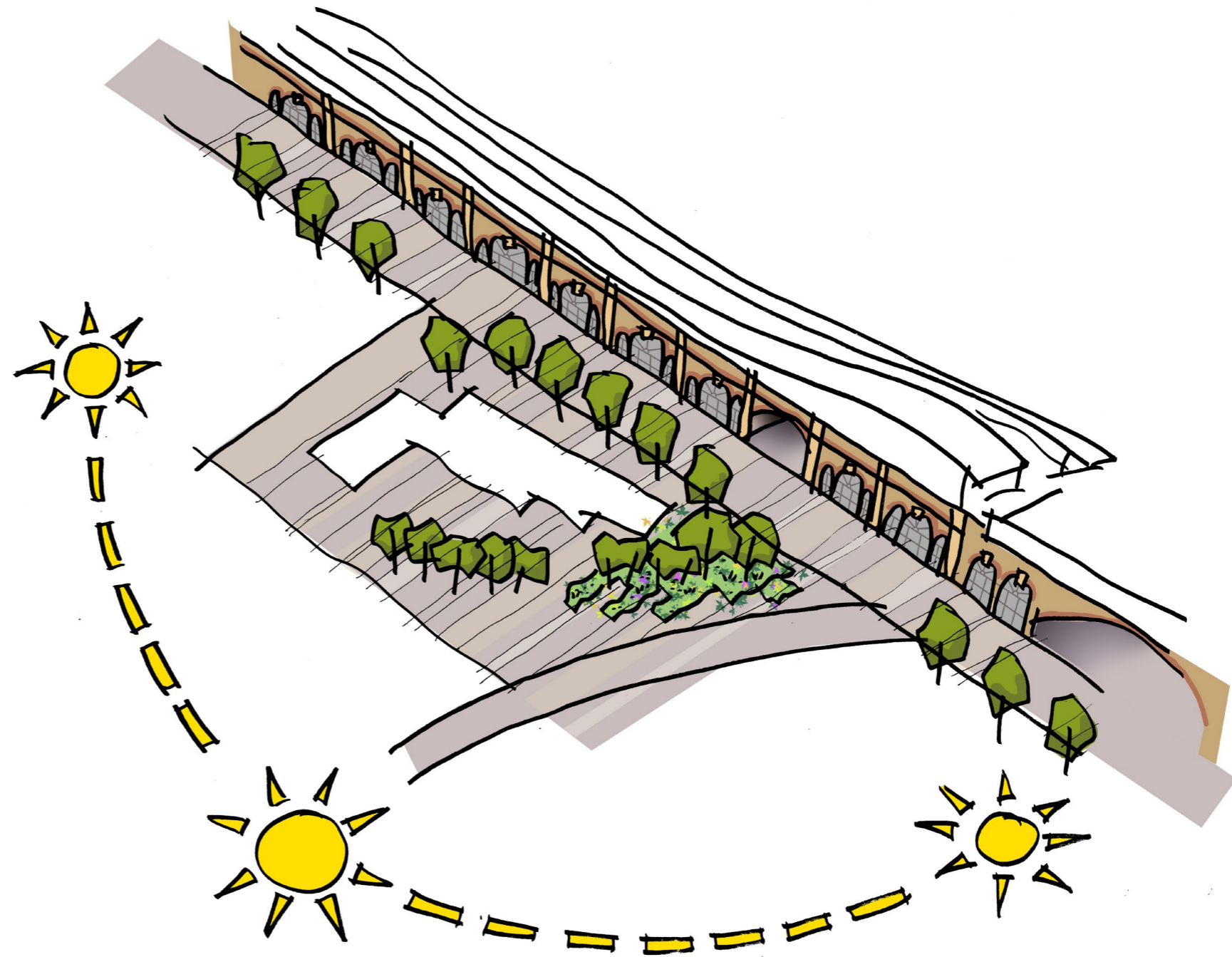
Ground level public realm

The ground level comprises an enhanced public realm to all external streets, and the major contribution of a new garden at the south-eastern end of the site.

On St Thomas Street, the pavement has been widened with a colonnade, allowing for comfortable pedestrian flow. The proposals work with the Transport for London ambition to make St Thomas Street one way, with a contraflow cycle lane. Street trees will add additional benefit in the form of urban greening.

The historic alignment of Vinegar Yard is retained, but as a pedestrian route only to be used by vehicles for emergency access.

At the south-eastern corner of the site, a new garden is proposed, offering a significant open space contribution to the local area. This garden will be filled with dense vegetation and large trees, and will act as a dwelling space, offering respite from the surrounding city.



Ground level concept sketch

Landscape and Public Realm

Ground Level



Ground level illustrative plan

Landscape and Public Realm

Ground Level

A new garden

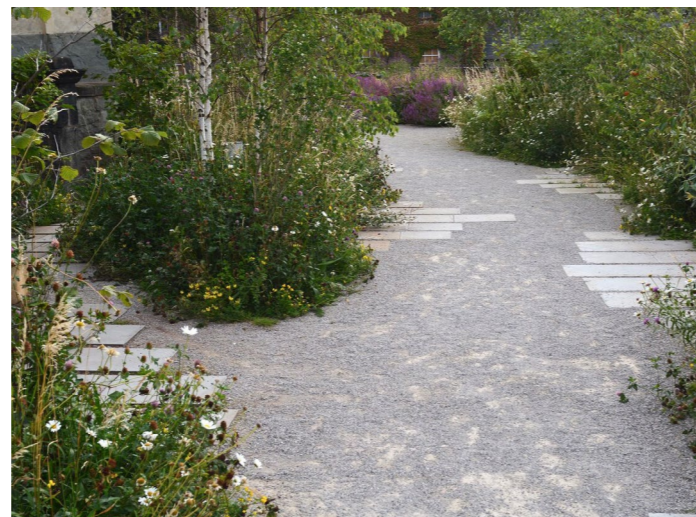
The new garden at the south-eastern end of the site is one of the most exciting aspects of the proposals, making a significant open space contribution to the local area. The garden will have a natural feel, and will be planted with a range of native and wildlife-friendly plants, providing interest throughout the year.

The garden has a good, south-facing aspect, which will make it more inviting for users, and allow a full range of trees and plants to be proposed. The space has the opportunity to offer significant urban greening, as all the planting has access to the underlying soil rather than being above structure.

As shown in the scale diagram opposite, the garden is surrounded by generous public realm, and offers 167m² of green space.



Garden scale diagram



Transitions in materiality



Simple timber seating



Informal lawn

Landscape and Public Realm

Ground Level

KEY

- 1 Seating
- 2 Species rich lawn
- 3 Herbaceous Planting
- 4 Slab paving
- 5 Paving setts
- 6 Ecocycle automated cycle storage
- 7 Blue badge parking space



Vinegar Garden illustrative plan

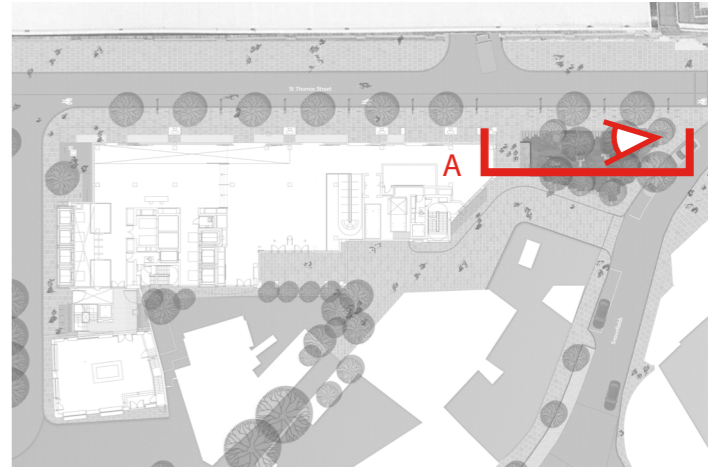
0 1 3 5 10m

Landscape and Public Realm

Ground Level



Section AA



Section location plan

Landscape and Public Realm

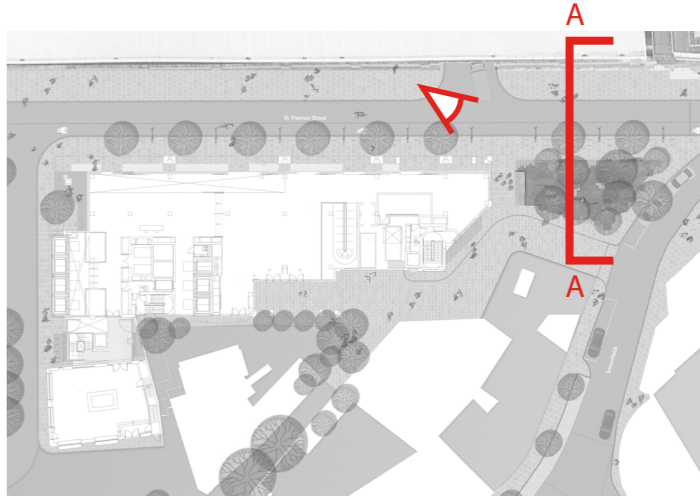
Ground Level



Illustrative view looking west from inside the garden

Landscape and Public Realm

Ground Level



Section location plan

Landscape and Public Realm

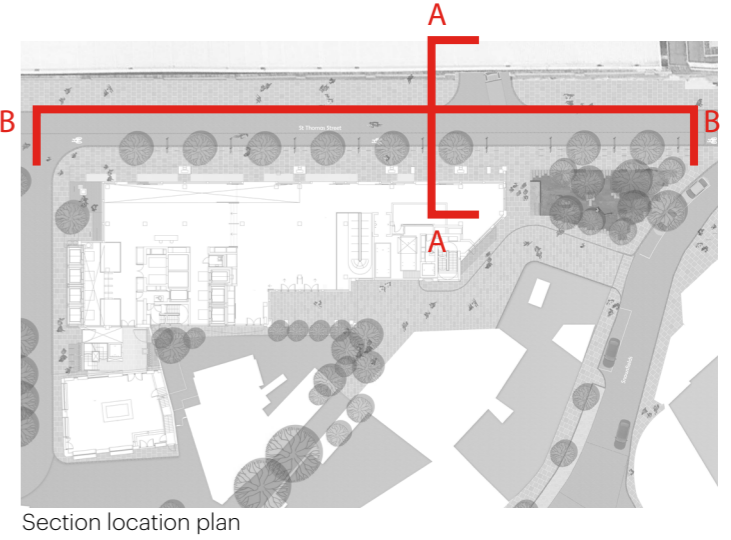
Ground Level



Illustrative view looking east from St Thomas Street

Landscape and Public Realm

Ground Level

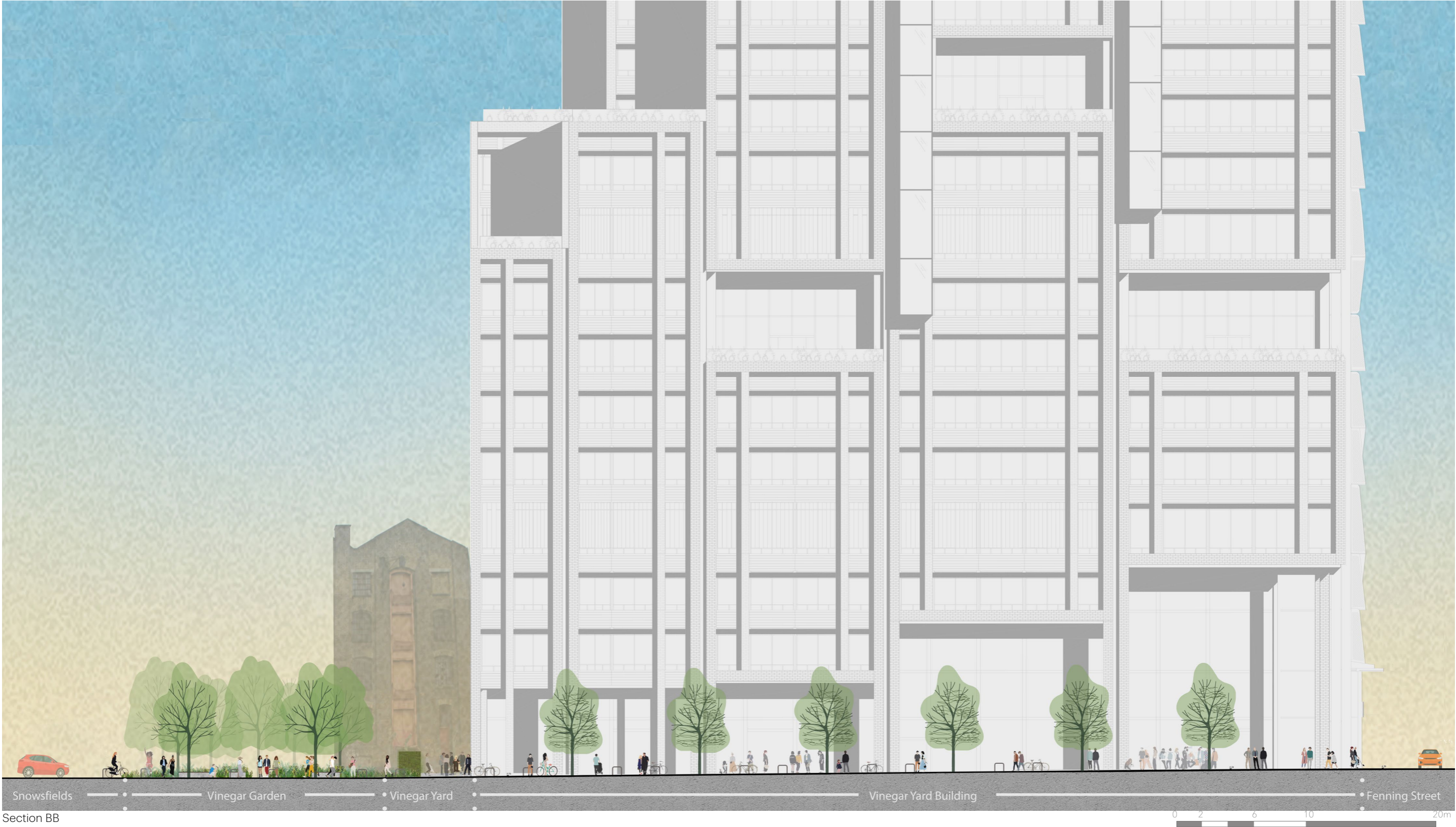


Section AA

Section location plan

Landscape and Public Realm

Ground Level



Snowsfields Vinegar Garden Vinegar Yard Vinegar Yard Building Fenning Street

Section BB 0 2 6 10 20m

Landscape and Public Realm

Ground Level

Hard Landscape Strategy

Hard Landscape Strategy

The hard landscape palette on the ground floor will be comprised primarily of York Stone and Granite, in keeping with the standard materials found elsewhere in the area. In addition to these materials will be stepping stones in Vinegar Park, as well as structural glass, metal grilles, timber benches and steel cycle stands.



Yorkstone flag paving - 600mm coursing width



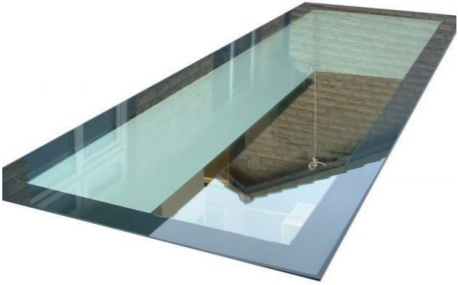
Granite sett two-tone paving - 300 x 200mm



Stepping stones



Granite kerbs



Structural glass



Metal grille



Timber bench



Cycle stands



Lighting columns



Landscape and Public Realm

Ground Level

- Key**
- Yorkstone paving - 600mm coursing
 - Structural glass
 - Metal grille
 - Granite sett two-tone paving - 300 x 200mm
 - Stepping stones
 - Timber seating
 - Granite kerbs
 - Cycle stands
 - Lighting column



Ground level hard landscape strategy diagram

Landscape and Public Realm

Ground Level

Tree Strategy

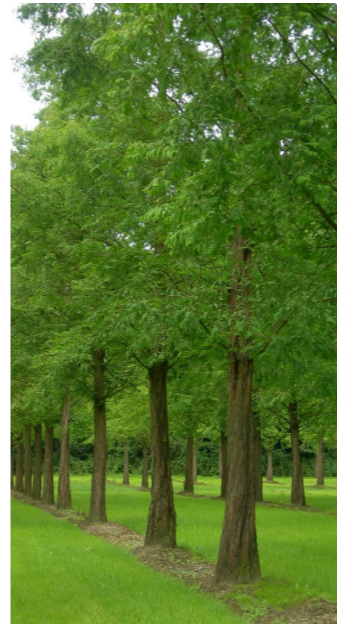
This indicative plant palette illustrates species which may be used for the ground level public realm. They have been selected for their suitability to microclimate; their aesthetic qualities; their potential to support wildlife; and their ability to alleviate pollution. The final selection of species will be developed in coordination with the local authority based on availability and detailed design.



Alnus incana



Liquidambar styraciflua



Metasequoia glyptostroboides



Populus tremula



Amelanchier lamarckii (multistem)

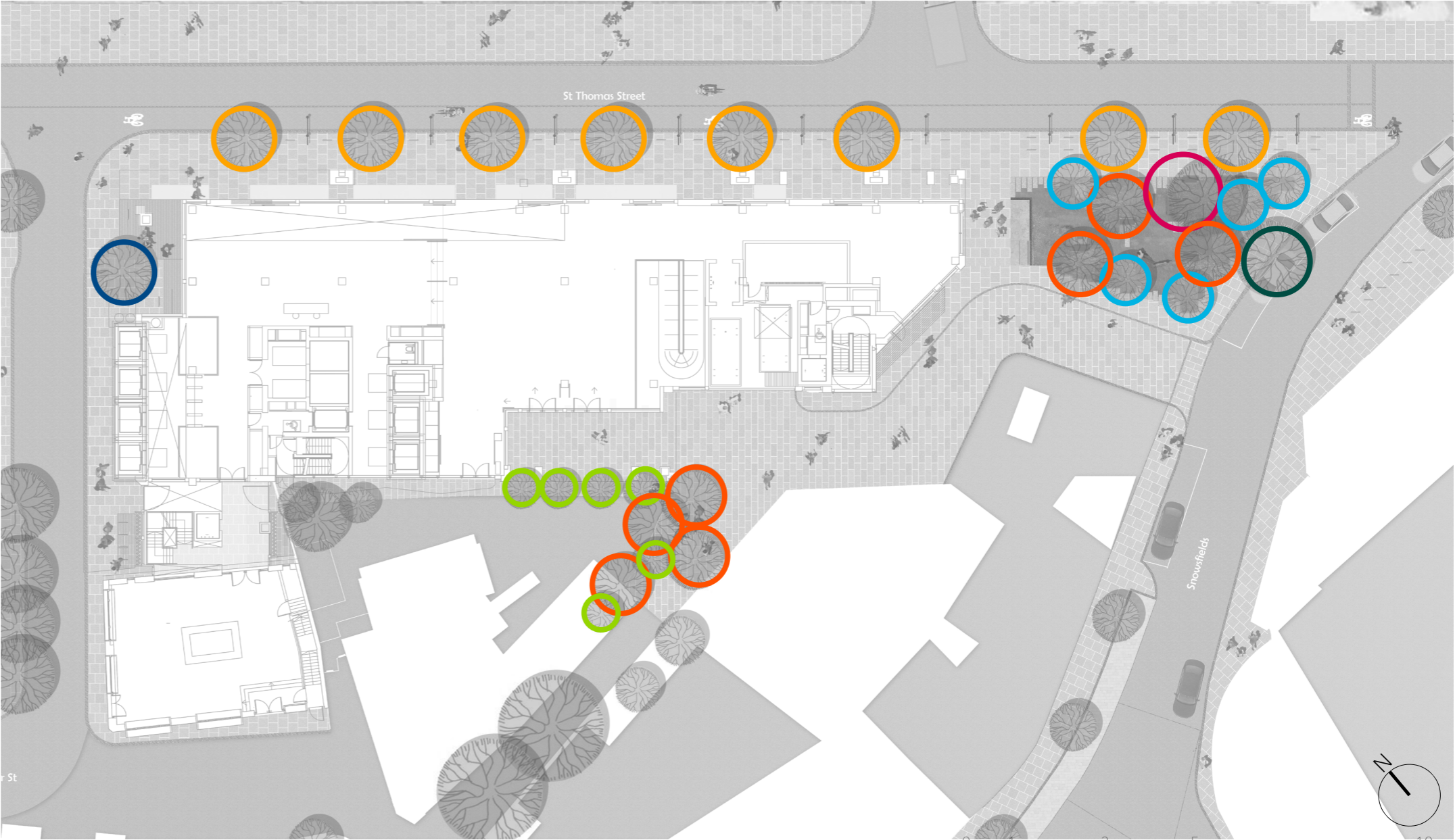


Betula pendula

Landscape and Public Realm

Ground Level

- Key**
-  *Alnus incana*
 -  *Liquidambar styraciflua*
 -  *Metasequoia glyptostroboides*
 -  *Populus tremula*
 -  *Amelanchier lamarckii (multistem)*
 -  *Betula pendula*
 -  *Betula pendula (existing)*



Ground level tree planting strategy diagram

Landscape and Public Realm

Ground Level

Soft Landscape Strategy

This indicative plant palette illustrates species which may be used for the ground level public realm. They have been selected for their suitability to microclimate; their aesthetic qualities; their potential to support wildlife; and their ability to alleviate pollution.



Woodland under storey



Green wall



Geranium phaeum



Helleborus argutifolius



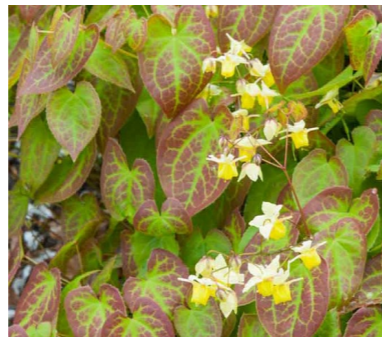
Digitalis lutea



Fatsia japonica



Hedera helix 'Tripod'



Epimedium versicolor



Euphorbia robbiae



Briza media



Heuchera 'Citronelle'



Heuchera 'Purple petticoats'



Matteuccia struthiopteris



Rodgersia pinnata



Dryopteris affinis



Hydrangea petiolaris



Liriope muscari



Anamanthele lessoniana



Galanthus nivalis



Galium odoratum



Polystichum polyblepharum

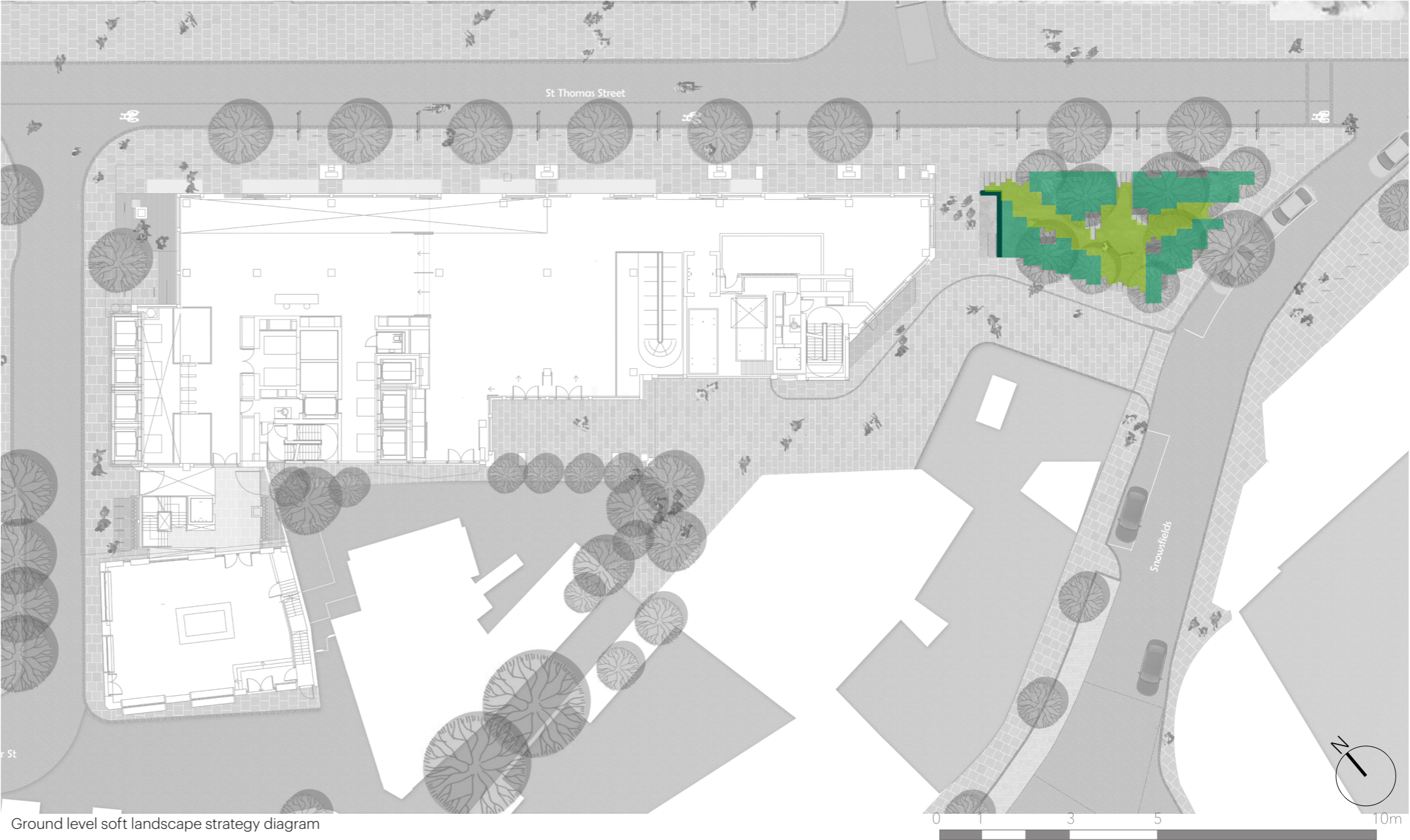


Soleirolia soleirolii

Landscape and Public Realm

Ground Level

- Key
- Woodland under storey planting
 - Species rich lawn
 - Green wall



Ground level soft landscape strategy diagram

4.0 Roof Level

Landscape and Public Realm

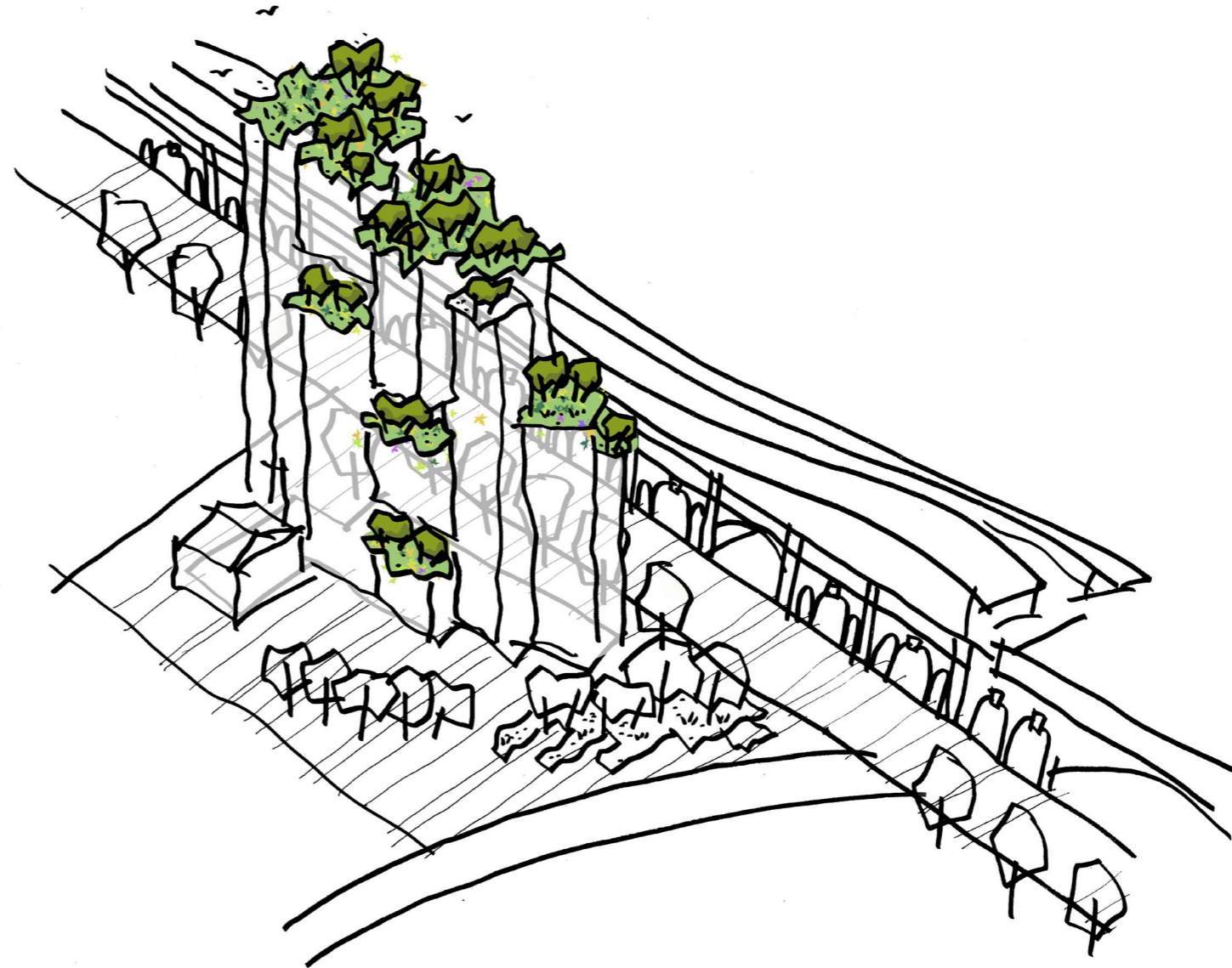
Roof Level

The roof terraces offer outdoor amenity space for both outpatients on floors 8 and 10; and office users on floors 15 and 17. Floor 19 and the building roof contains various plant equipment, so would not be accessible as an amenity space, but would offer visual amenity from below.

All terraces are bordered with a perimeter planter, which will provide a green edge visible from the ground. The larger interior planters are arranged to provide a variety of intimate dwelling space, and more open spaces which have the potential to allow for events to take place.



Precedent images



Roof level concept sketch

Landscape and Public Realm

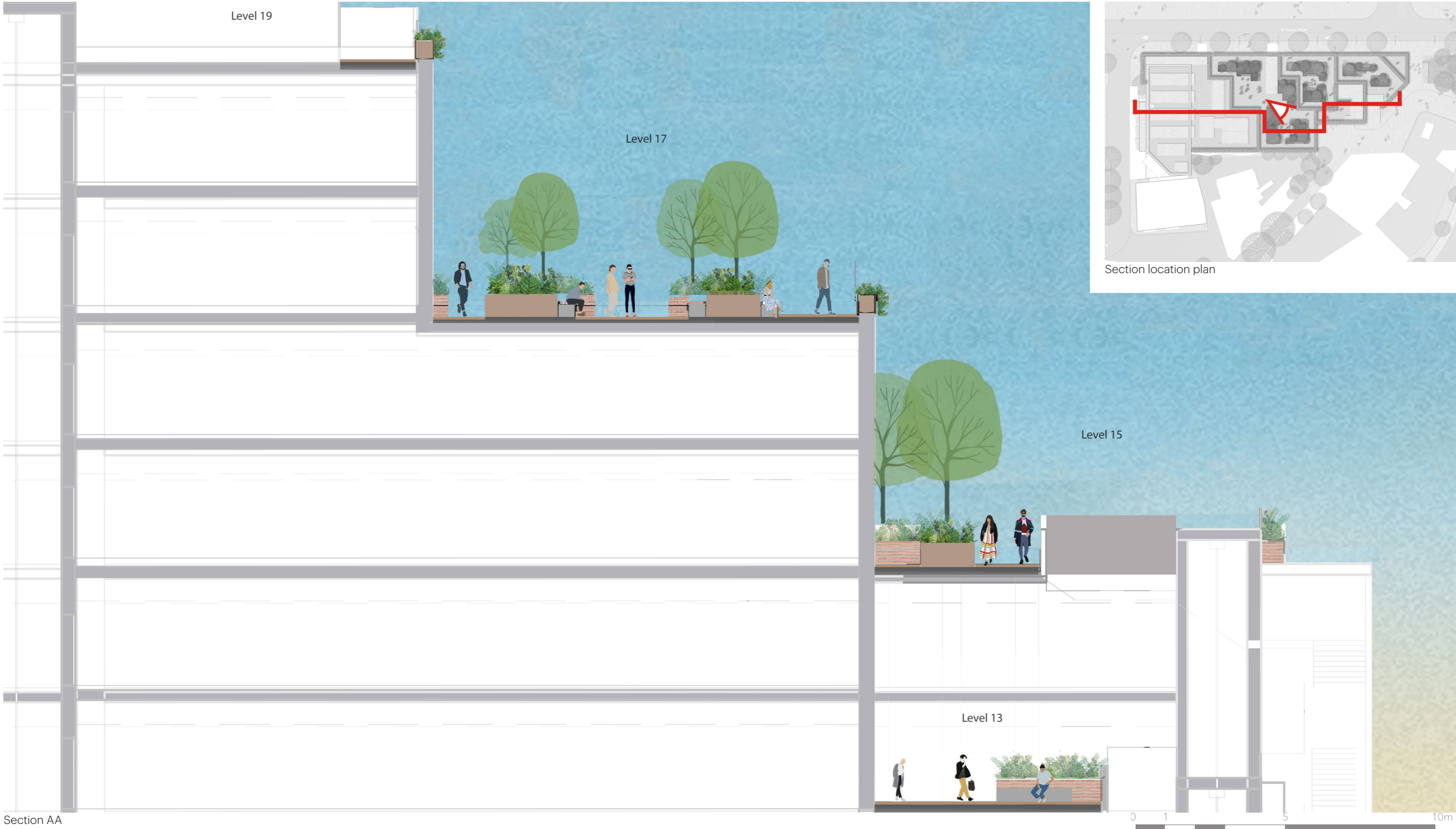
Roof Level



Roof level illustrative plan

Landscape and Public Realm

Roof Level



Section AA

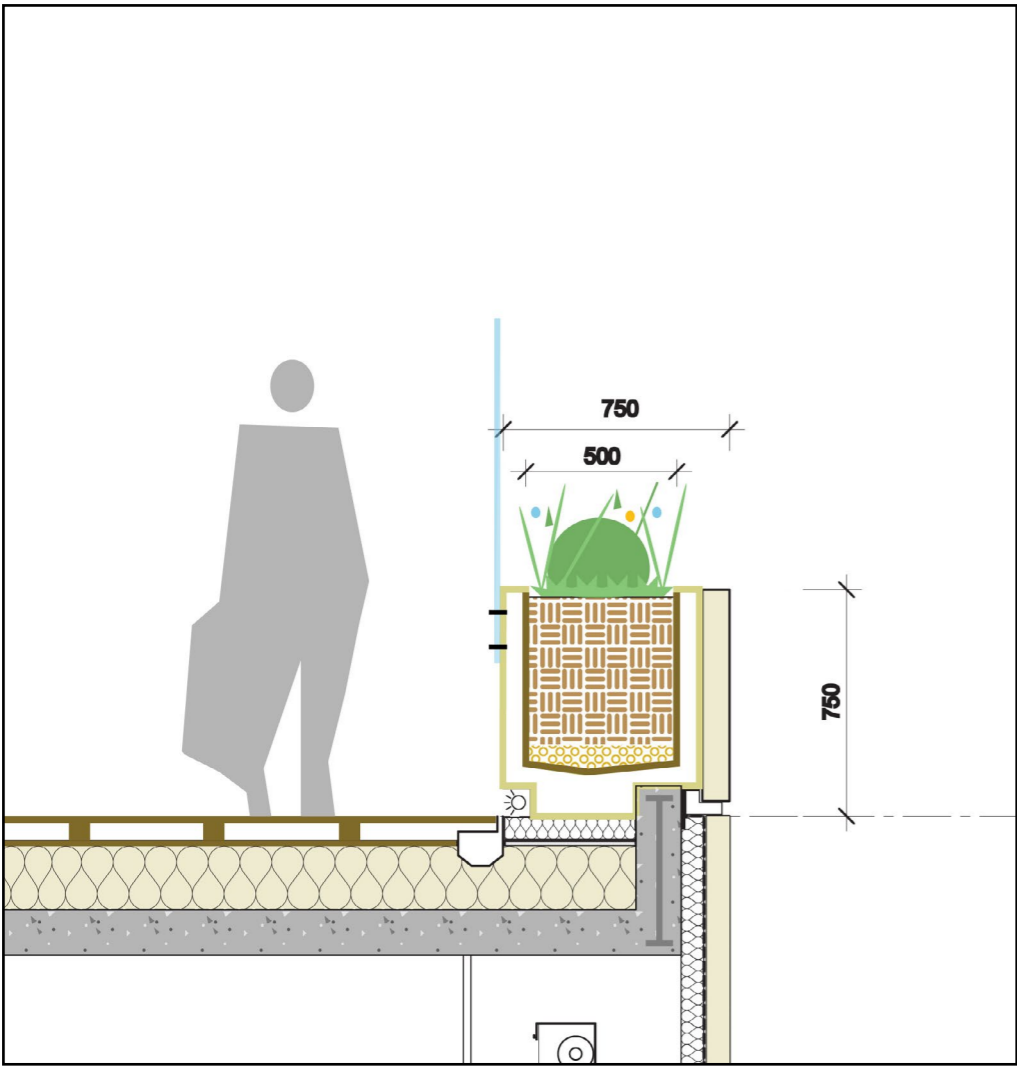
SPACEHUB



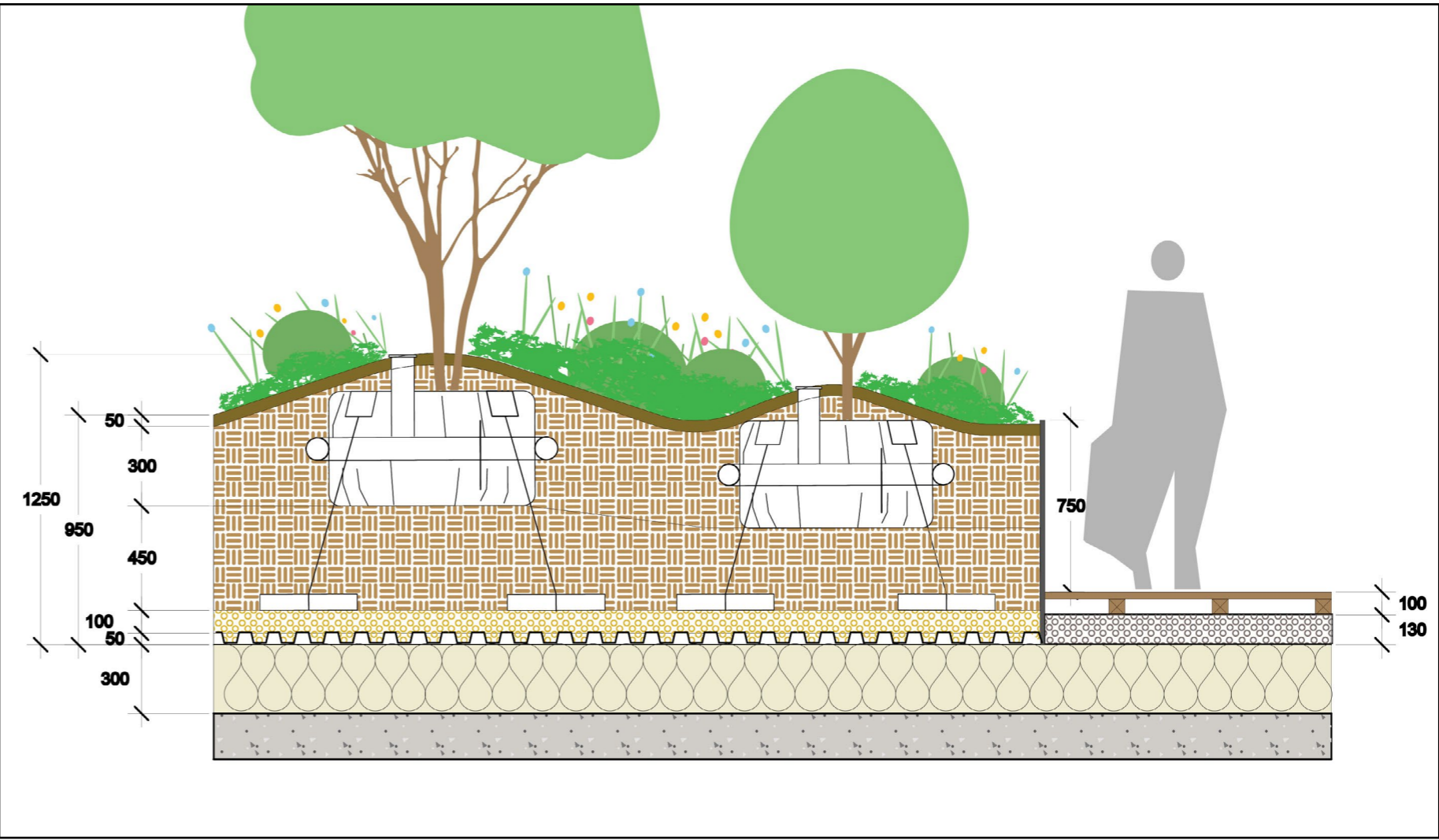
Roof level illustrative view

Landscape and Public Realm

Roof Level



Typical edge planter technical detail



Typical edge planter technical detail



Location plan



Section BB

Landscape and Public Realm

Roof Level

Hard Landscape Strategy

Rigid construction will be used for the main hard paving areas to ensure a premium quality feel. The Building Maintenance Unit (BMU) track will be integrated into the paving to allow the space to be used when not in operation. Steel planters will be used to maximise the soil volume available to the plants. Freestanding seating elements will allow for flexibility in the furniture arrangement.



Granite paving - rigid construction



'Blackened Steel' planters



Integrated BMU track



Timber bench



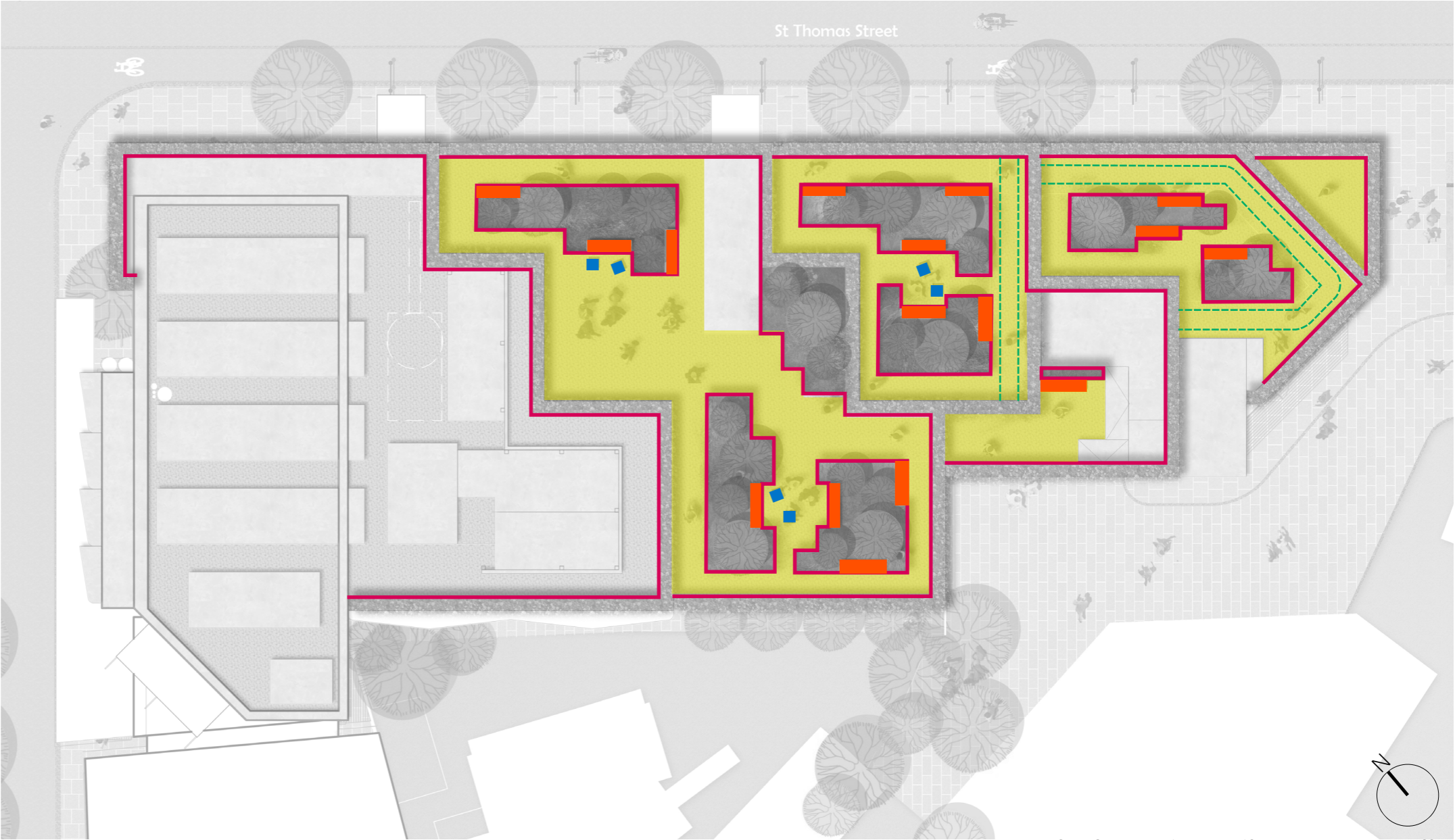
Freestanding seating cube



Landscape and Public Realm

Roof Level

- Key**
- Granite paving (rigid construction)
 - 'Blackened Steel' planters
 - Integrated timber seating
 - Freestanding timber seating cubes
 - Integrated BMU track



Roof level hard landscape strategy diagram



Landscape and Public Realm

Roof Level

Tree Strategy

This indicative plant palette illustrates species which may be used for the ground level public realm. They have been selected for their suitability to microclimate; their aesthetic qualities; their potential to support wildlife; and their ability to alleviate pollution.



Prunus serrula



Rhus typhina



Cornus kousa 'Weisse Fontaine'



Arbutus unedo 'Compacta'



Amelanchier lamarckii (multistem)

Landscape and Public Realm

Roof Level

- Key
- Prunus serrula
 - Rhus typhina
 - Cornus kousa 'Weisse Fontaine'
 - Arbutus unedo
 - Amelanchier lamarckii



Roof level tree strategy diagram

Landscape and Public Realm

Roof Level

Soft Landscape Strategy

This indicative plant palette illustrates species which may be used for the roof terraces. They have been selected for their suitability to microclimate; their aesthetic qualities; their potential to support wildlife; and their ability to alleviate pollution.

Understorey planting (sun)



Kniphofia 'Tawny King'

Understorey planting (shade)



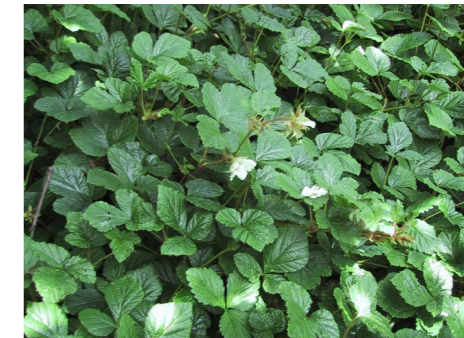
Helleborus argutifolius

Perimeter planting (sun)



Rosmarinus officinalis 'Prostratus'

Perimeter planting (shade)



Rubus tricolor



Eryngium giganteum



Athurium fillix-femina



Persicaria affinis 'Superba'



Hedera helix



Achillea 'Terracotta'



Euphorbia robbiae



Thymus vulgaris



Vinca minor



Salvia nemorosa 'Caradonna'



Alchemilla mollis



Euphorbia myrsinites

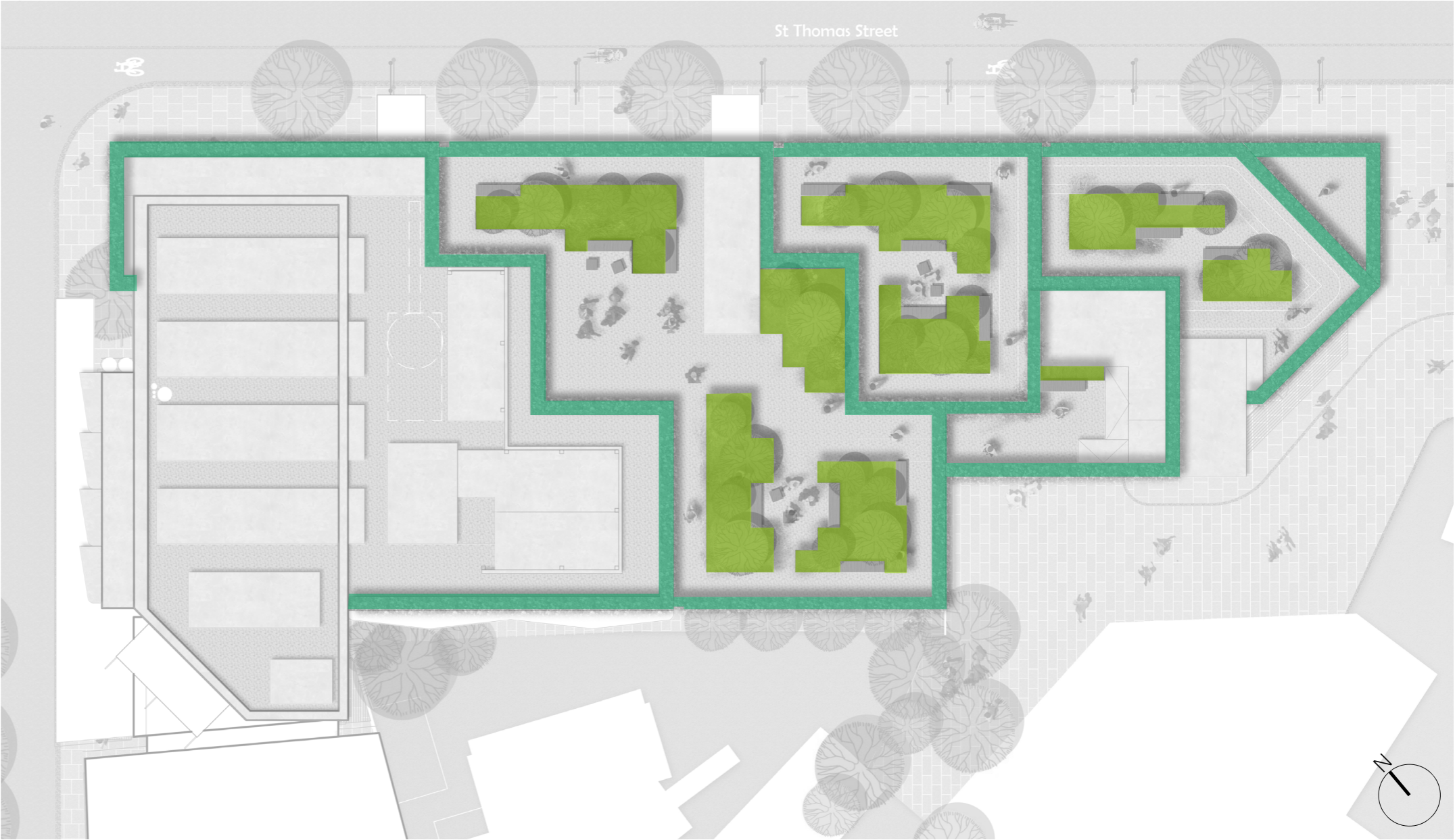


Trachelospermum jasminoides

Landscape and Public Realm

Roof Level

- Key
- Under storey planting
 - Perimeter planting



Roof level soft landscape strategy diagram

5.0 Urban Greening

Landscape and Public Realm

Urban Greening

Urban Greening Factor

The Urban Greening Factor (UGF) is a tool that evaluates and quantifies the amount and quality of urban greening that a scheme provides to inform decisions about appropriate levels of greening in new developments. This is required by draft policy G5 of the London Plan. It aims to increase green cover and be considered at the beginning of the design and planning stage. The UGF policy suggests a target score of 0.4 for predominantly residential developments and 0.3 for commercial.

How is UGF calculated?

The Urban Greening Factor for a proposed development is calculated in the following way:

(Factor A x Area) + (Factor B x Area) + (etc.) divided by Total Site Area

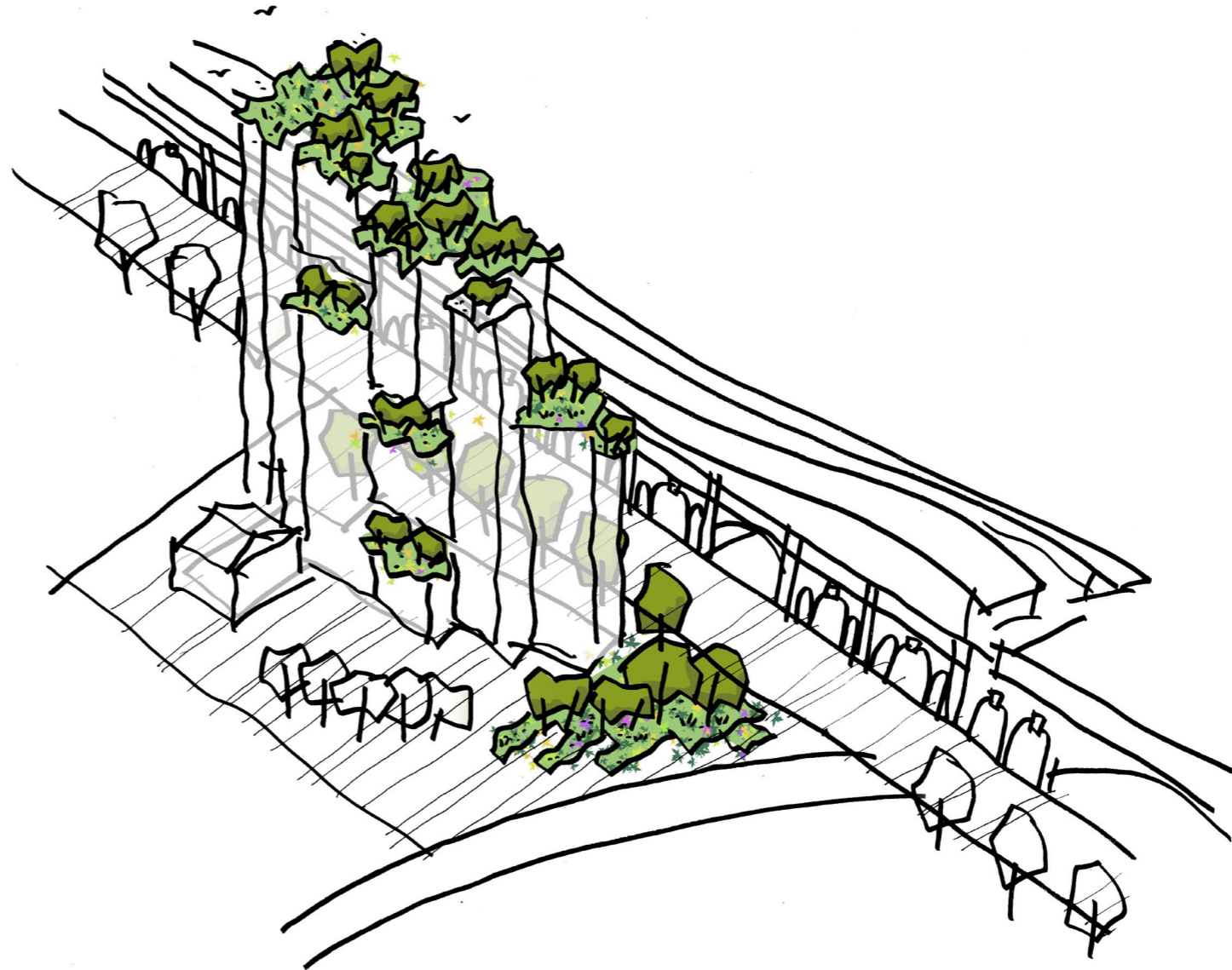
So, for example, an office development with a 600 sqm footprint on a site of 1,000 sqm including a green roof, 250 sqm car parking, 100 sqm open water and 50 sqm of amenity grassland would score the following;

$$(0.7 \times 600) + (0.0 \times 250) + (1 \times 100) + (0.4 \times 50) / 1000 = 0.54$$

In this example, the proposed office development exceeds the interim target score of 0.3 for a predominately commercial development under part B of Policy G5 Urban greening.

The site

The UGF score is 0.301. It has been deemed that a score above 0.30 is appropriate given the proposed uses for the proposals.



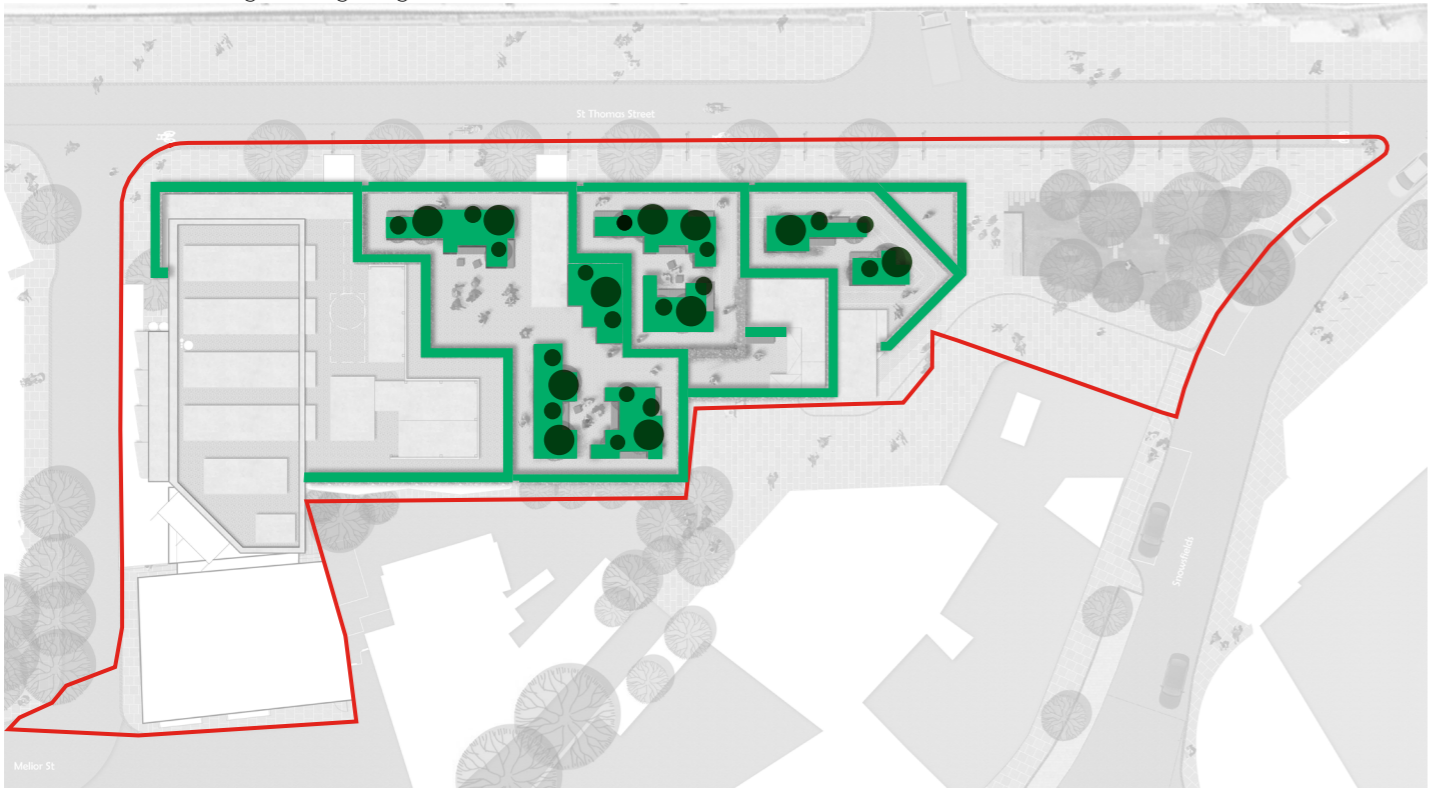
Urban greening concept sketch

Landscape and Public Realm

Urban Greening



Ground level urban greening diagram



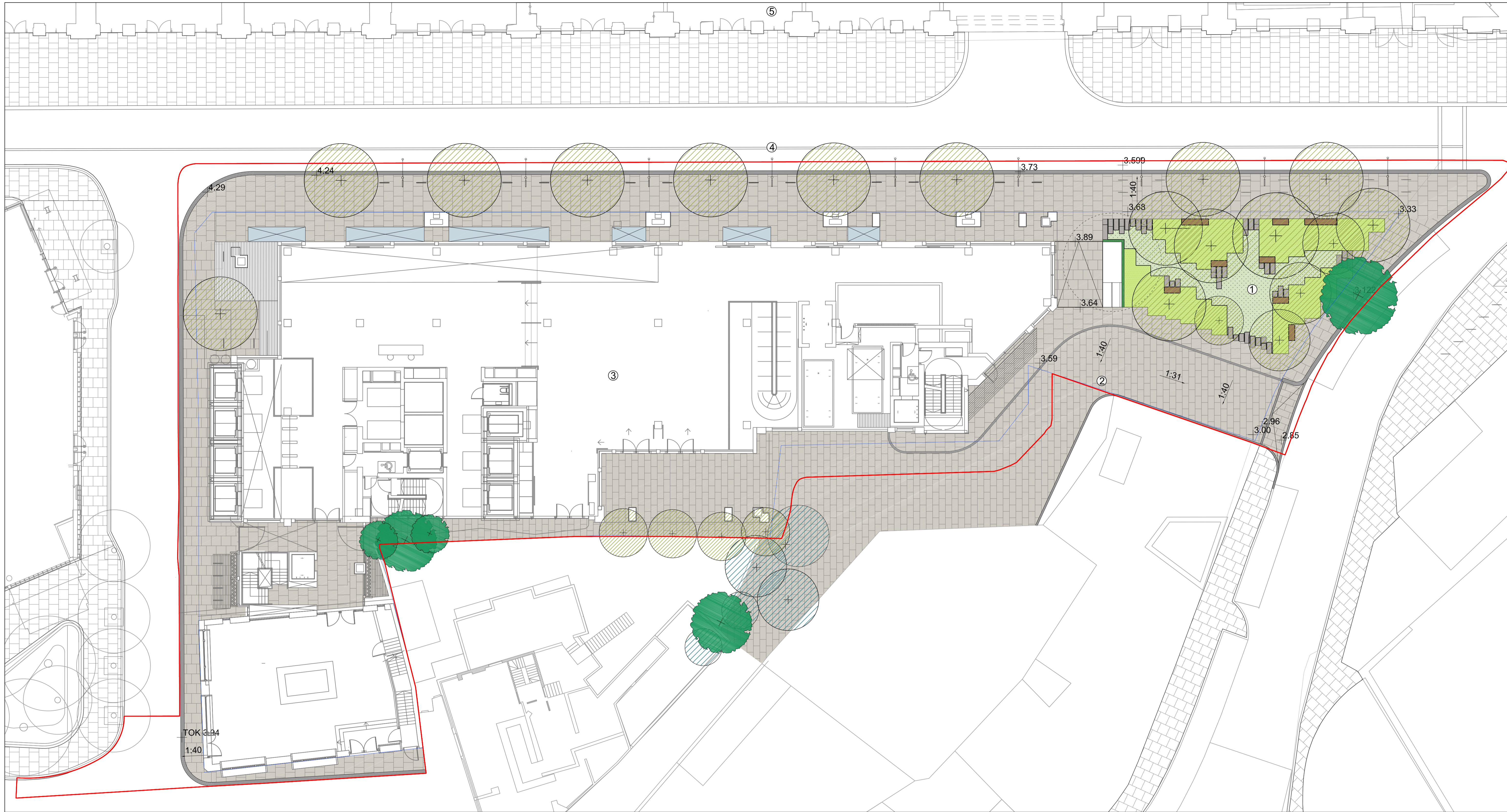
Roof level urban greening diagram

Urban Greening Factor Calculator (Greater London Authority)			
Surface Cover Type	Factor	Area (m ²)	Contribution
Semi-natural vegetation (e.g. trees, woodland, species-rich grassland) maintained or established on site.	1		0
Wetland or open water (semi-natural; not chlorinated) maintained or established on site.	1		0
Intensive green roof or vegetation over structure. Substrate minimum settled depth of 150mm.	0.8	379	303.2
Standard trees planted in connected tree pits with a minimum soil volume equivalent to at least two thirds of the projected canopy area of the mature tree.	0.8	580	464
Extensive green roof with substrate of minimum settled depth of 80mm (or 60mm beneath vegetation blanket) – meets the requirements of GRO Code 2014.	0.7		0
Flower-rich perennial planting.	0.7	91	63.7
Rain gardens and other vegetated sustainable drainage elements.	0.7		0
Hedges (line of mature shrubs one or two shrubs wide).	0.6		0
Standard trees planted in pits with soil volumes less than two thirds of the projected canopy area of the mature tree.	0.6	131	78.6
Green wall –modular system or climbers rooted in soil.	0.6		0
Groundcover planting.	0.5	57	28.5
Amenity grassland (species-poor, regularly mown lawn).	0.4		0
Extensive green roof of sedum mat or other lightweight systems that do not meet GRO Code 2014.	0.3		0
Water features (chlorinated) or unplanted detention basins.	0.2		0
Permeable paving.	0.1		0
Sealed surfaces (e.g. concrete, asphalt, waterproofing, stone).	0	2476	0
Total contribution			938
Total site area (m²)			3,029
Urban Greening Factor			0.309703833

- Intensive green roof or vegetation over structure. Substrate minimum settled depth of 150mm.
- Standard trees planted in connected tree pits with a minimum soil volume equivalent to at least two thirds of the projected canopy area of the mature tree.
- Extensive green roof with substrate of minimum settled depth of 80mm (or 60mm beneath vegetation blanket) – meets the requirements of GRO Code 2014.
- Flower-rich perennial planting.
- Rain gardens and other vegetated sustainable drainage elements.
- Hedges (line of mature shrubs one or two shrubs wide).
- Standard trees planted in pits with soil volumes less than two thirds of the projected canopy area of the mature tree.
- Green wall –modular system or climbers rooted in soil.
- Groundcover planting.
- Amenity grassland (species-poor, regularly mown lawn).
- Extensive green roof of sedum mat or other lightweight systems that do not meet GRO Code 2014.
- Water features (chlorinated) or unplanted detention basins.
- Permeable paving.
- Sealed surfaces (e.g. concrete, asphalt, waterproofing, stone).

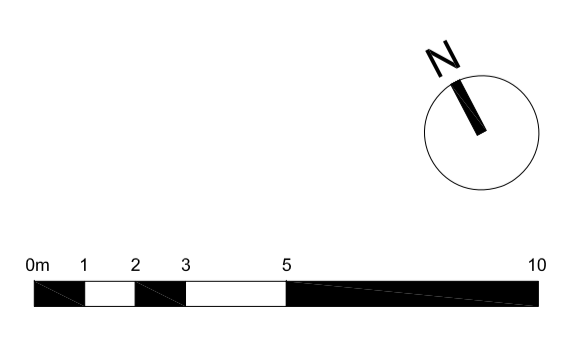
Site Area = 3,029m²

6.0 Drawings



Key		Hard landscape		Soft landscape		Proposed tree		Existing tree	
1	Pocket park - soft landscape		Yorkstone flag paving		Species rich lawn		Proposed tree		Existing tree
2	Access route - hard landscape		Granite sett paving		Mixed shrub and herbaceous planting		Proposed tree (off-site wind mitigation)		
3	Vinegar Yard building		Stepping stones		Green wall				
4	St Thomas Street		Granite kerbs						
5	London Bridge Station		Timber bench						
			Sheffield stand						
			Lighting column						
			Automated underground cycle storage						

Rev	Date	Description	By	Chk
00	11/12/20	Landscape General Arrangement	SB	GC
01	29/10/21	Landscape Addendum	JS	GC



Project
Vinegar Yard

Client
CIT Group Partners LLP

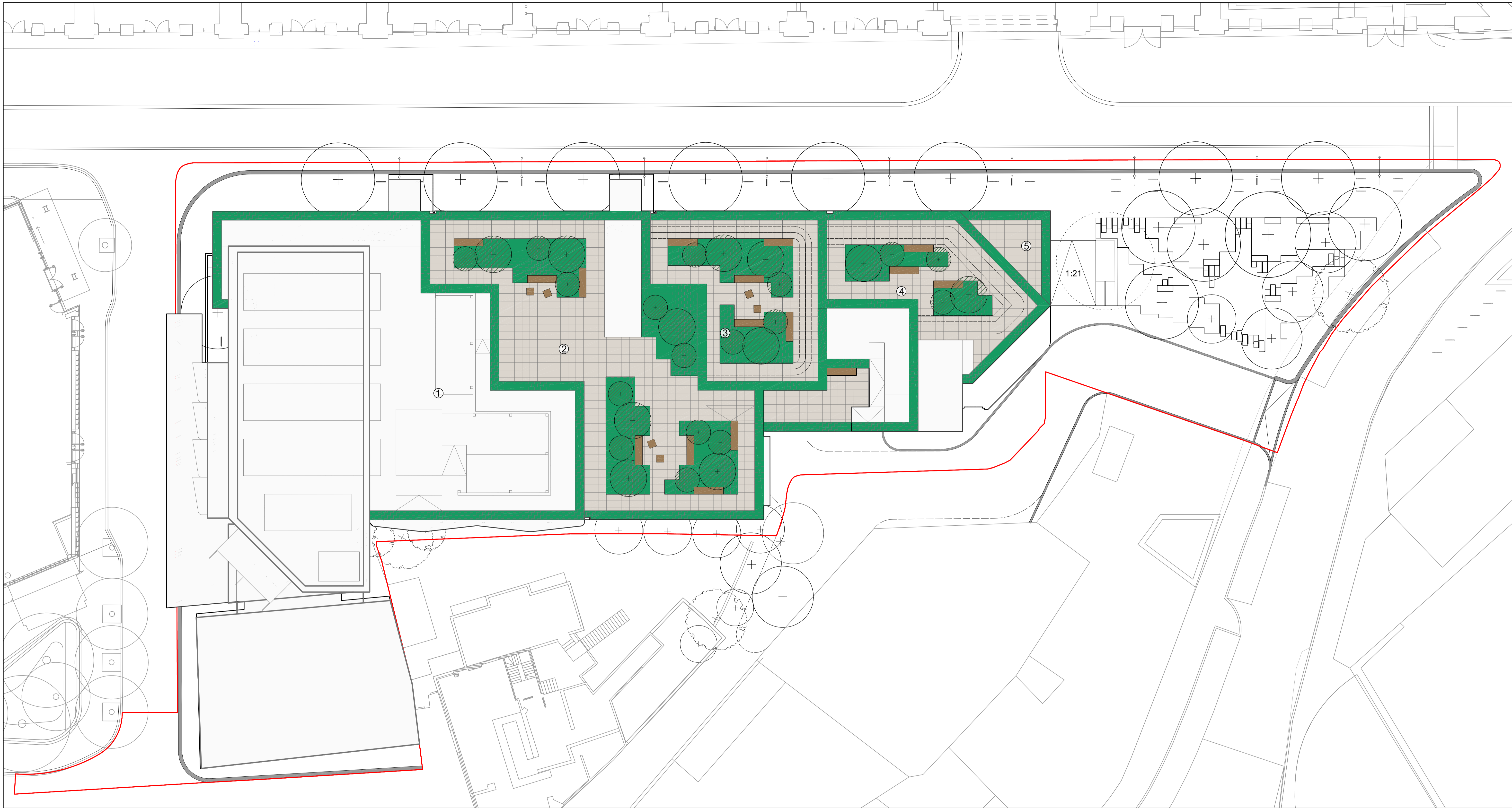
Drawing title
Landscape General Arrangement
Level 00

Drawing status	Drawn by
For planning	JS
Date	Checked
29/10/21	GC
Drawing number	Rev
8350-PL-GA-101-P	01
	Scale
	1:150 @ A1

SPACEHUB

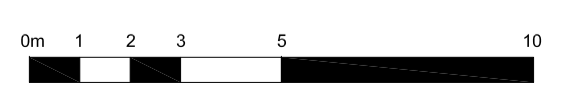
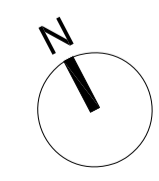
7 Gibraltar Walk, London, E2 7LH
+44 (0)20 7739 6699
www.spacehubdesign.com

Do not scale from this drawing, copyright reserved



Key					
1	Level 19 terrace		Granite paving		Mixed shrub and herbaceous planting
2	Level 17 terrace		Building Maintenance Unit track		Proposed tree
3	Level 15 terrace		Integrated timber seating		
4	Level 10 terrace		Timber seating cubes		
5	Level 8 terrace				

Rev	Date	Description	By	Chk	Rev	Date	Description	By	Chk
00	18/12/20	Landscape General Arrangement	SB	GC					
01	14/07/21	Landscape General Arrangement	JS	GC					
02	29/10/21	Landscape General Arrangement	JS	GC					

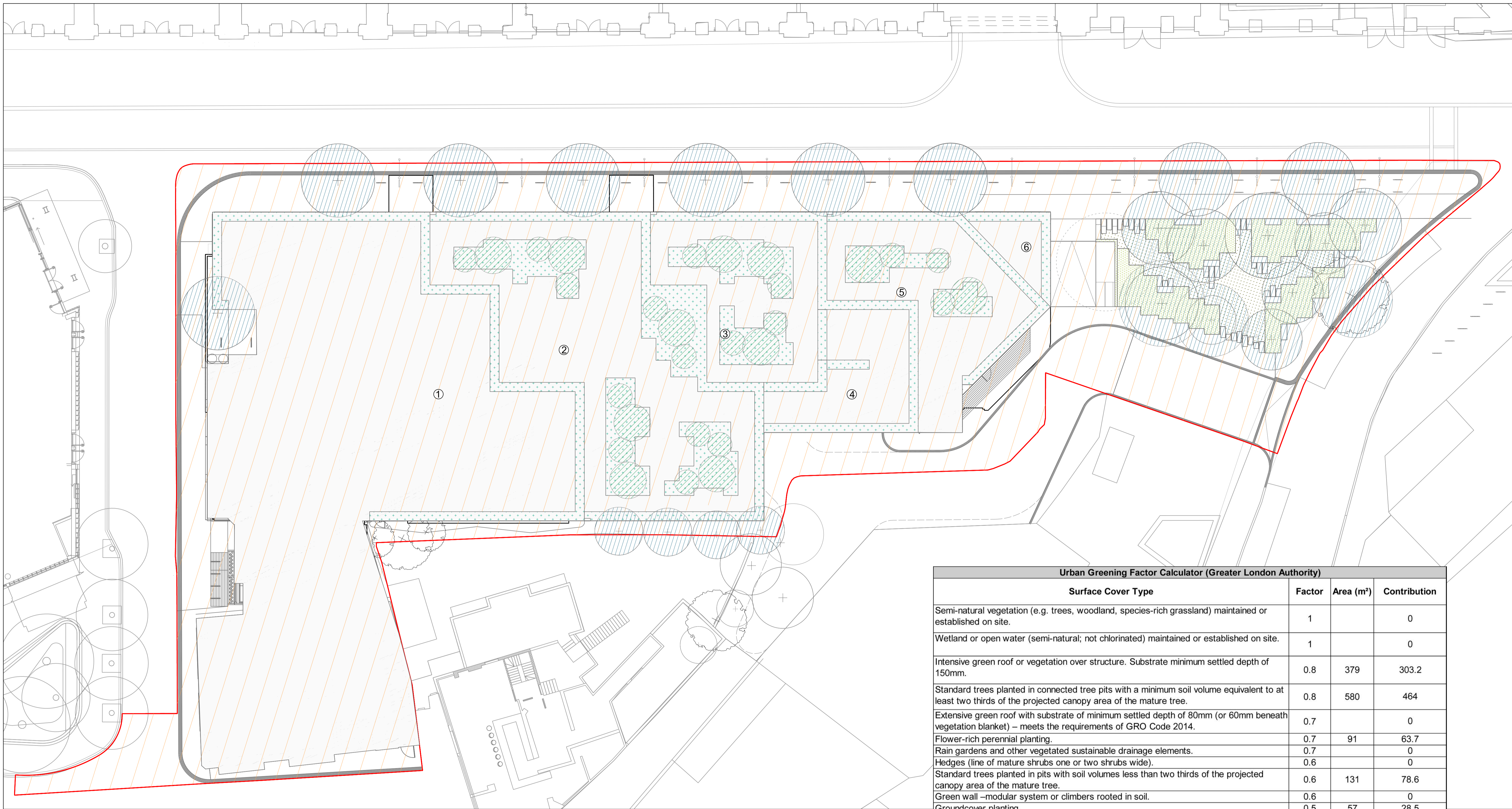


Project
Vinegar Yard
Client
St Thomas Bermondsey Ltd
Drawing title
Landscape General Arrangement
Roof Level

Drawing status
For Planning
Date
29/10/21
Drawing number
8350-PL-GA-102-P
Rev
02
Scale
1:150 @ A1

SPACEHUB

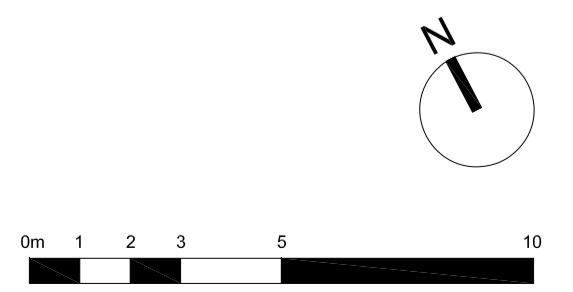
7 Gibraltar Walk, London, E2 7LH
+44 (0)20 7739 6699
www.spacehubdesign.com
Do not scale from this drawing, copyright reserved



Urban Greening Factor Calculator (Greater London Authority)			
Surface Cover Type	Factor	Area (m ²)	Contribution
Semi-natural vegetation (e.g. trees, woodland, species-rich grassland) maintained or established on site.	1		0
Wetland or open water (semi-natural; not chlorinated) maintained or established on site.	1		0
Intensive green roof or vegetation over structure. Substrate minimum settled depth of 150mm.	0.8	379	303.2
Standard trees planted in connected tree pits with a minimum soil volume equivalent to at least two thirds of the projected canopy area of the mature tree.	0.8	580	464
Extensive green roof with substrate of minimum settled depth of 80mm (or 60mm beneath vegetation blanket) – meets the requirements of GRO Code 2014.	0.7		0
Flower-rich perennial planting.	0.7	91	63.7
Rain gardens and other vegetated sustainable drainage elements.	0.7		0
Hedges (line of mature shrubs one or two shrubs wide).	0.6		0
Standard trees planted in pits with soil volumes less than two thirds of the projected canopy area of the mature tree.	0.6	131	78.6
Green wall –modular system or climbers rooted in soil.	0.6		0
Groundcover planting.	0.5	57	28.5
Amenity grassland (species-poor, regularly mown lawn).	0.4		0
Extensive green roof of sedum mat or other lightweight systems that do not meet GRO Code 2014.	0.3		0
Water features (chlorinated) or unplanted detention basins.	0.2		0
Permeable paving.	0.1		0
Sealed surfaces (e.g. concrete, asphalt, waterproofing, stone).	0	2476	0
Total contribution			938
Total site area (m²)			3,029
Urban Greening Factor			0.309703833

Key 1 Level 19 terrace 2 Level 17 terrace 3 Level 15 terrace 4 Level 13 terrace 5 Level 10 terrace 6 Level 8 terrace	Legend Application boundary Surface cover types Intensive green roof or vegetation over structure 150mm min soft buildup Factor: 0.8 Flower-rich perennial planting Factor: 0.7 Groundcover planting Factor: 0.5 Sealed surfaces Factor: 0 Standard trees Soil volume less than two thirds of the projected canopy area of the mature tree Factor: 0.6 Standard trees planted in connected tree pits with a minimum soil volume equivalent to at least two thirds of the projected canopy area of the mature tree. Factor: 0.8
---	---

Rev	Date	Description	By	Chk
00	18/12/20	Landscape General Arrangement	SB	GC
01	14/07/21	Landscape General Arrangement	JS	GC
02	29/10/21	Landscape Addendum	JS	GC

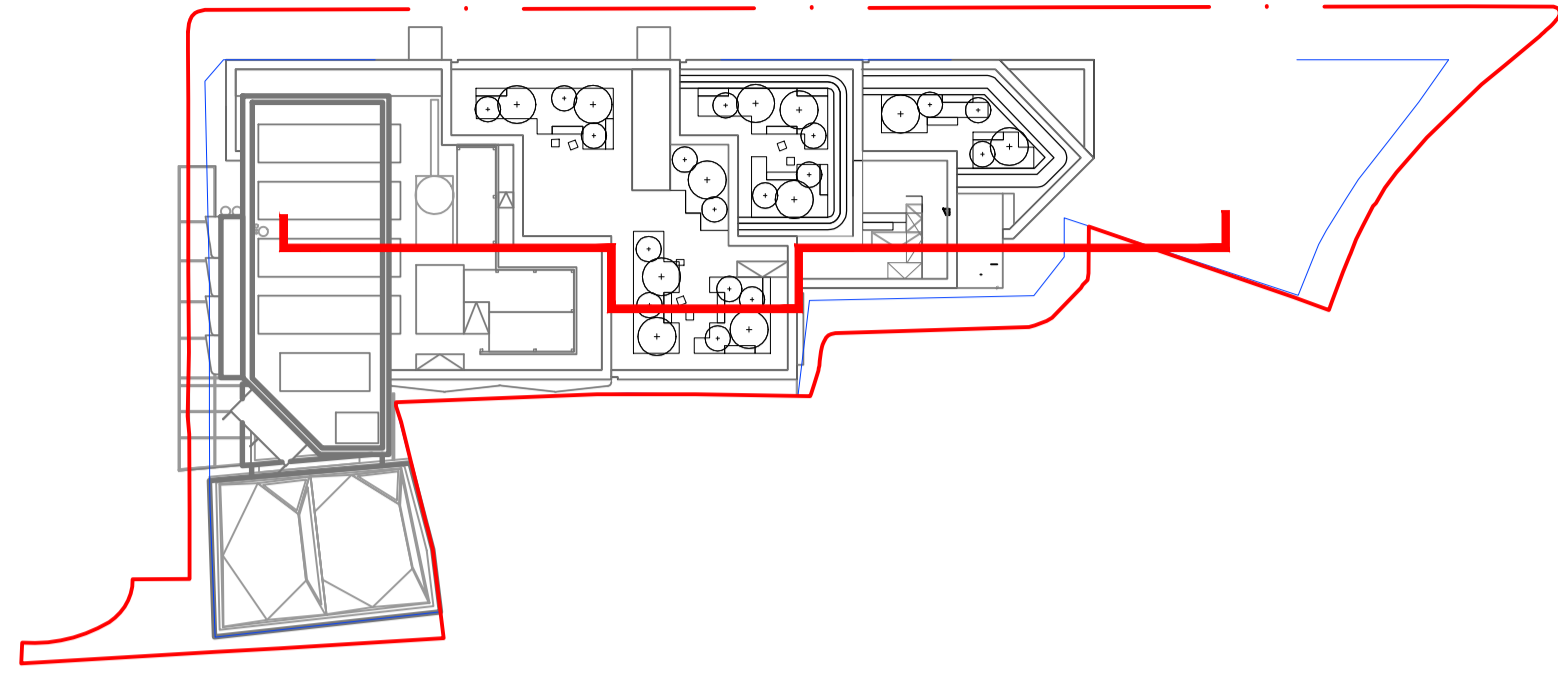


Project Vinegar Yard	Drawing status For Planning	Drawn by JS
Client St Thomas Bermondsey Ltd	Date 29/10/21	Checked GC
Drawing title Urban Greening Factor	Drawing number 8350-PL-UGF-101	Rev Scale 02 1:150 @ A1

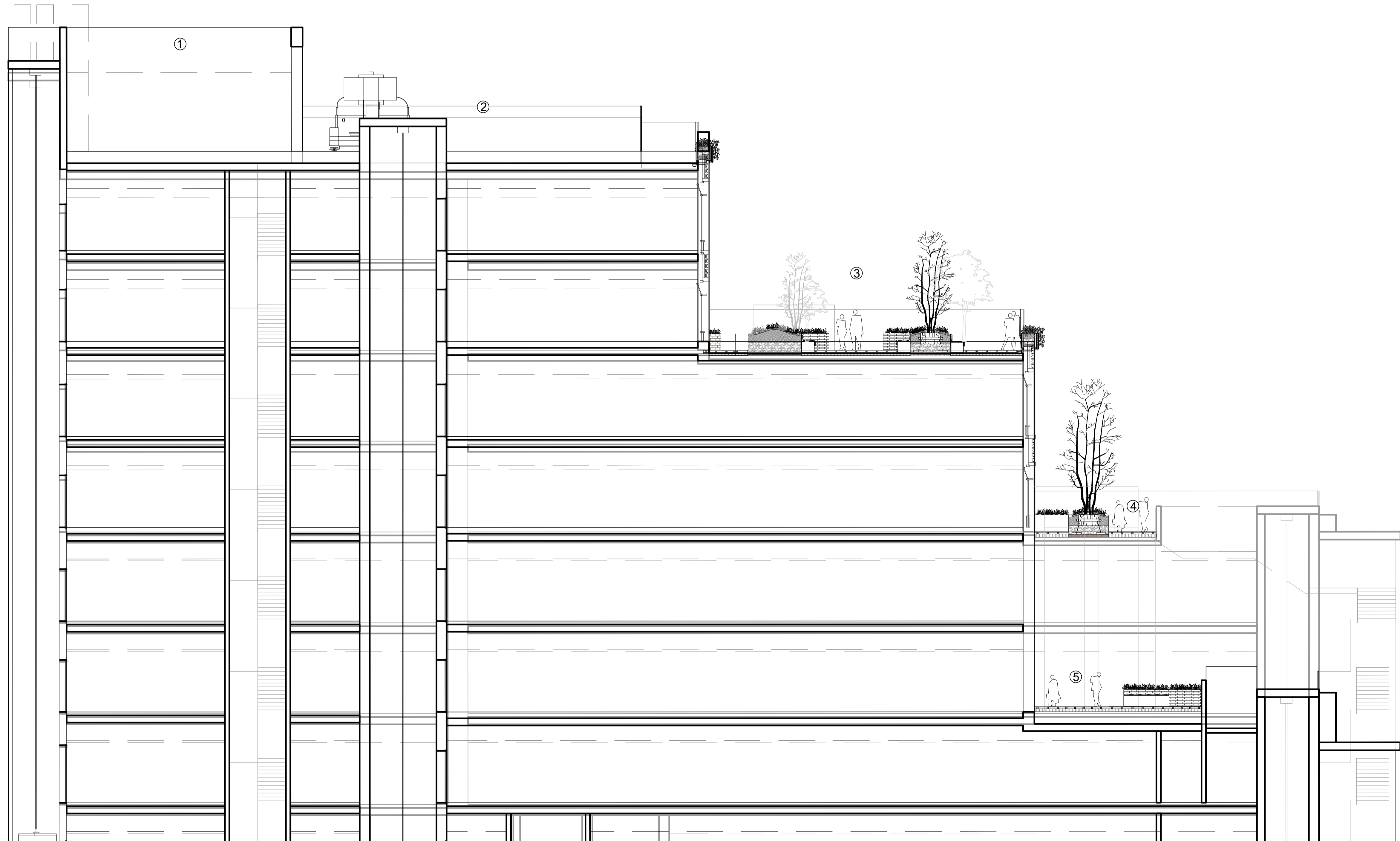
SPACEHUB

7 Gibraltar Walk, London, E2 7LH
 +44 (0)20 7739 6699
 www.spacehubdesign.com

Do not scale from this drawing, copyright reserved



Section Location



Rev	Date	Description	By	Chk
00	11/12/20	Landscape Section	AM	GC
01	22/10/21	Landscape Section	JS	GC

Rev	Date	Description	By	Chk

- Key**
- 1 Roof level plant enclosure
 - 2 Level 19 terrace
 - 3 Level 17 terrace
 - 4 Level 15 terrace
 - 5 Level 13 terrace



Project
Vinegar Yard

Client
CIT Group Partners LLP

Drawing title
Landscape Section
Roof terraces

Drawing status
For Planning

Date
22/10/21

Drawing number
8350-SE-GA-205-P

Rev
01

Scale
1:50 @ A1

Drawn by
AM

Checked
GC

SPACEHUB

7 Gibraltar Walk, London, E2 7LH
+44 (0)20 7739 6699
www.spacehubdesign.com
Do not scale from this drawing, copyright reserved

