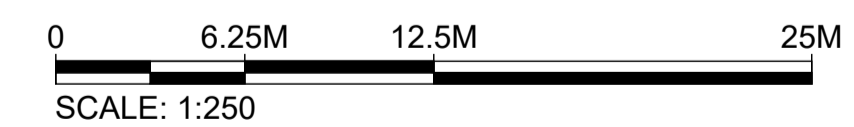
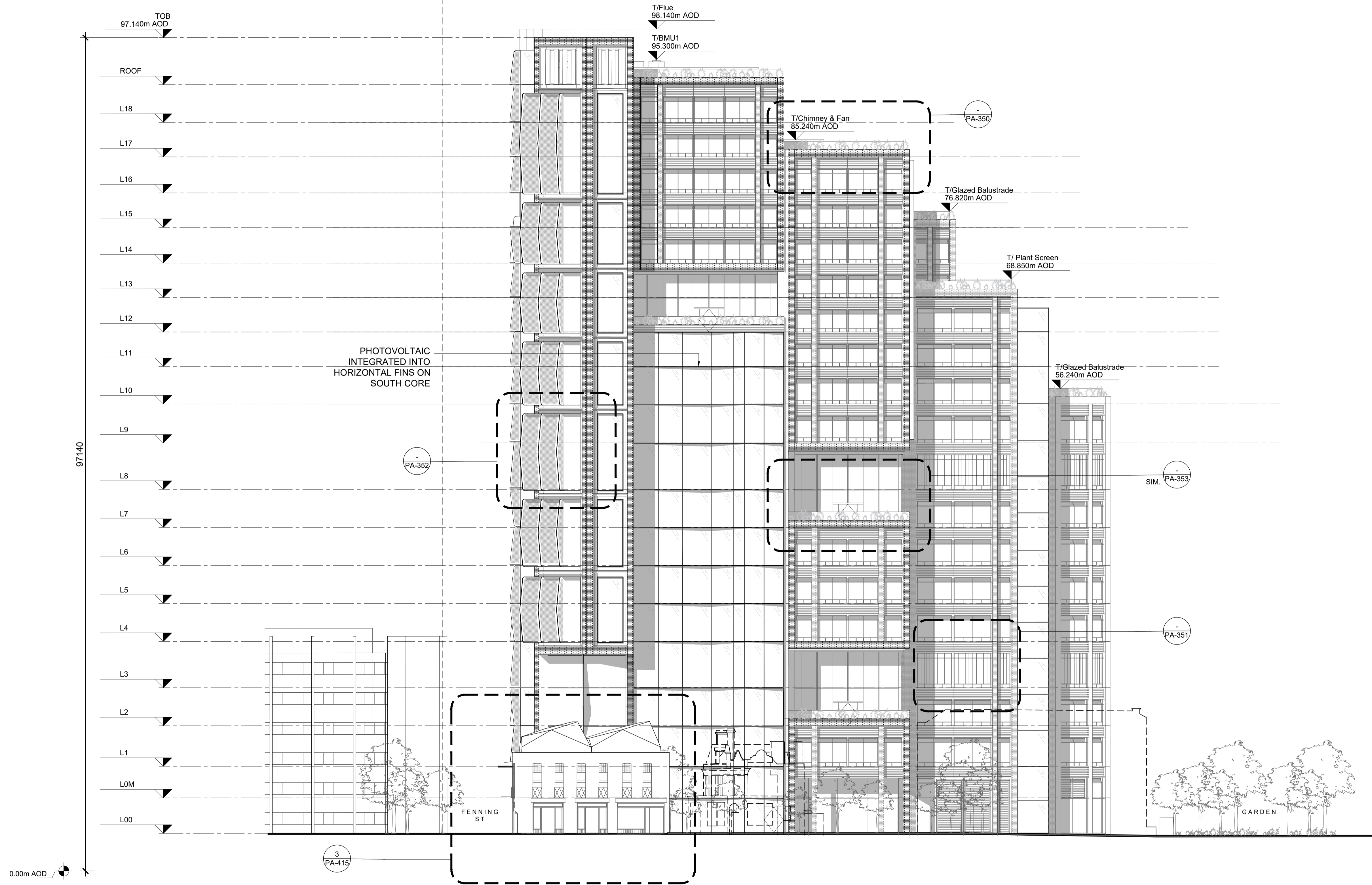


EDGE LONDON BRIDGE  
Planning application Ref: 20-AP-0944\_1



# KPF

**Vinegar Yard  
St. Thomas St  
SE1 3QR**

**Client**  
St. Thomas Bermondsey Ltd.  
3rd Floor, 50 Jermyn Street,  
London, SW1Y 6LX  
Tel: 020 7667 7766

**Environmental Consultant**  
Trium Environmental Consulting  
68 - 85 Tabernacle Street  
London, EC2A 4BD  
Tel: 020 3887 7118

**Building Services Consultant**  
Sweco  
1 Bath Road  
Maidenhead, SL6 4AQ  
Tel: 016 2862 3423

**Townscape Consultant**  
Montagu Evans  
5 Bolton St  
London, W1J 8BA  
Tel: 020 7493 4002

**Planning Consultant**  
Montagu Evans  
5 Bolton St  
London, W1J 8BA  
Tel: 020 7493 4002

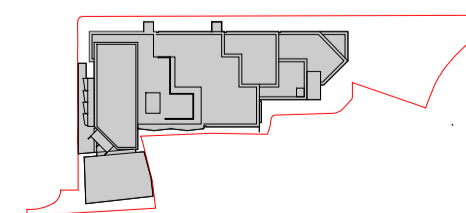
**Transport Consultant**  
Caneparo Associates  
21 Little Portland Street  
London, W1W 8BT  
Tel: 020 3617 8200

**Structural Consultant**  
AKT II  
White Collar Factory  
1 Old Street Yard  
London, EC1Y 8AF  
Tel: 020 7250 7777

**Cost Consultant**  
Arcadis  
Arcadis House, 34 York Way  
London, N1 9AB  
Tel: 0 20 7812 2099

00	Planning Issue	AF	Oct 2021
No.	Issue	Check	Date

Key Plan



**Kohn Pedersen Fox Associates  
(International) PA**  
Architects and Planning Consultants

7a Langley Street  
London WC2H 9JA  
England  
T: +44 (0) 20 3119 5300  
F: +44 (0) 20 7497 1175  
<http://www.kpf.com>

Proj. No. **2472** Project **Vinegar Yard**

Scale 1:200 @ A1 Drawn by SD Checked by AF

Drawing Title and No. **SOUTH ELEVATION**

No. **PA-211** Rev. **00**

© 2019 KOHN PEDERSEN FOX ASSOCIATES (INTERNATIONAL) PA. All rights reserved. Where drawing contains Ordnance Survey data © Crown Copyright, Licence no. 10001998.