

Thameside West (TSW) works site



DCO / tunnel / station etc works sites



Complete/occupied buildings



TSW site access



DCO / tunnel / station works access



Public access



Time-restricted access

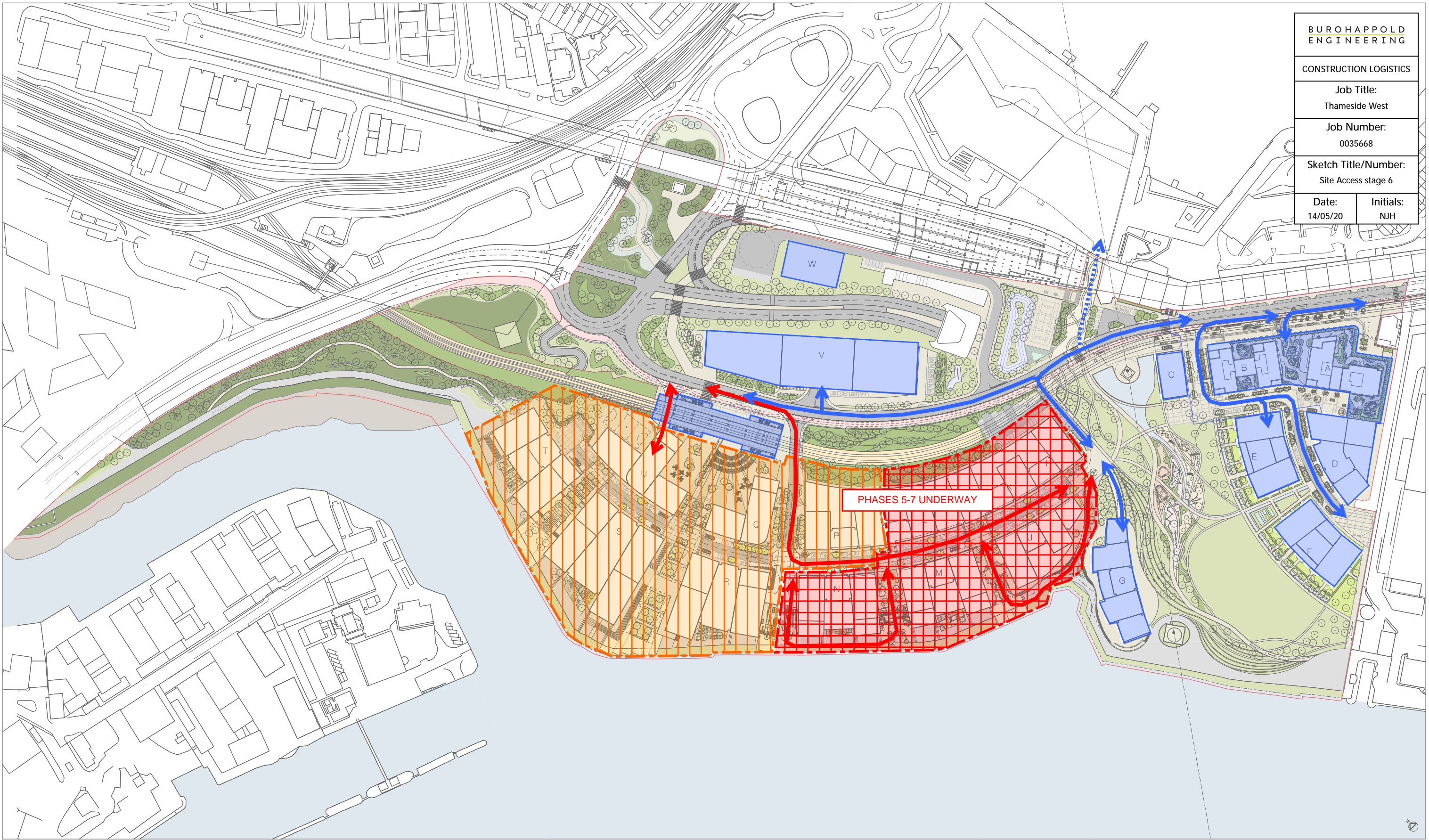











TSW support space (storage, laydown etc)



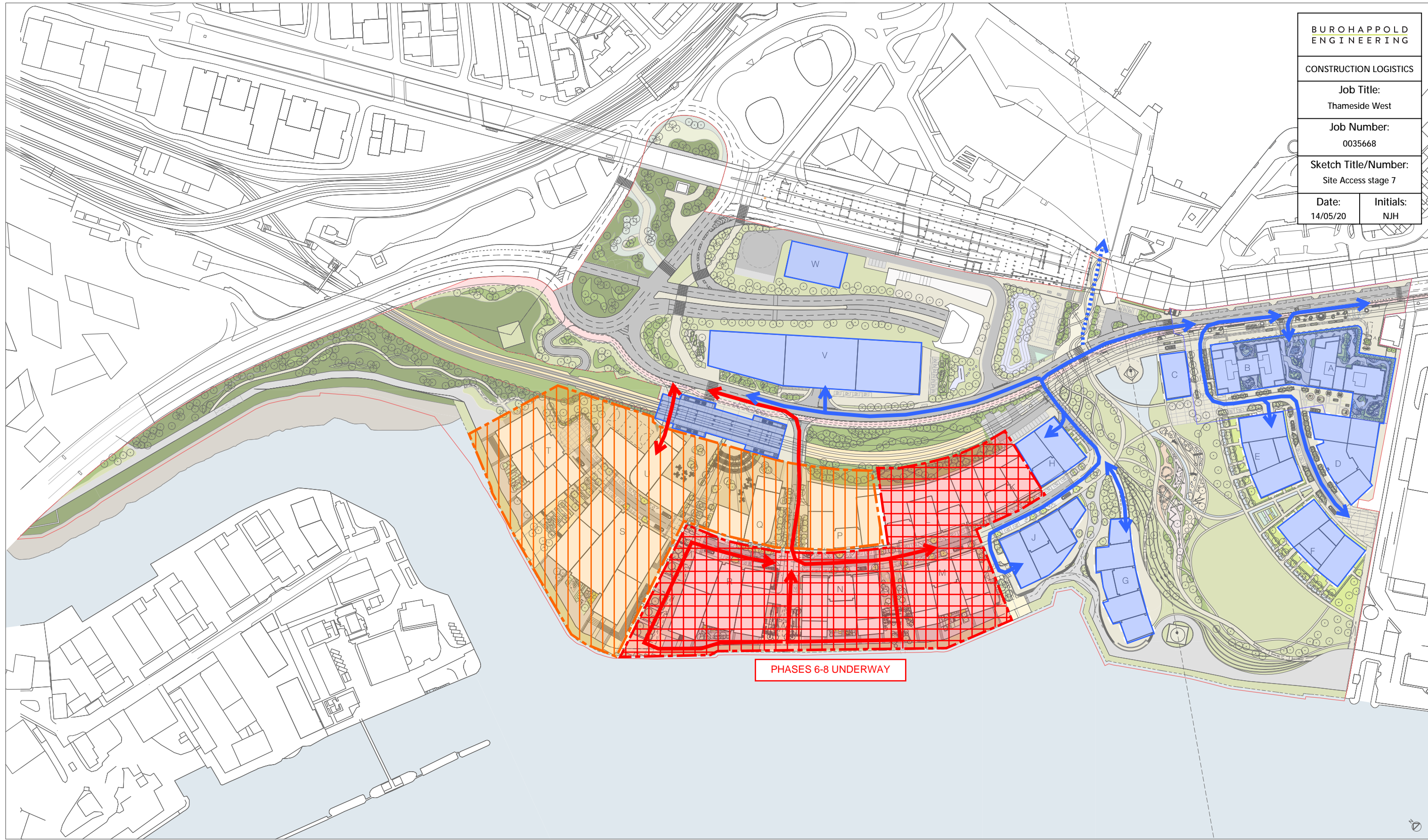
Primary non-vehicular access

BURO HAPPOLD ENGINEERING	
CONSTRUCTION LOGISTICS	
Job Title: Thameside West	
Job Number: 0035668	
Sketch Title/Number: Site Access stage 6	
Date: 14/05/20	Initials: NJH



-  Thameside West (TSW) works site
-  DCO / tunnel / station etc works sites
-  Complete/occupied buildings
-  TSW site access
-  DCO / tunnel / station works access
-  Public access
-  Time-restricted access
-  TSW support space (storage, laydown etc)
-  Primary non-vehicular access

Notes:  
 Large section of TSW site potentially available for materials storage/processing, laydown, welfare facilities, etc.  
 Construction access can be segregated from public access to completed phases.



Thameside West (TSW) works site



DCO / tunnel / station etc works sites



Complete/occupied buildings



TSW site access



DCO / tunnel / station works access



Public access



Time-restricted access

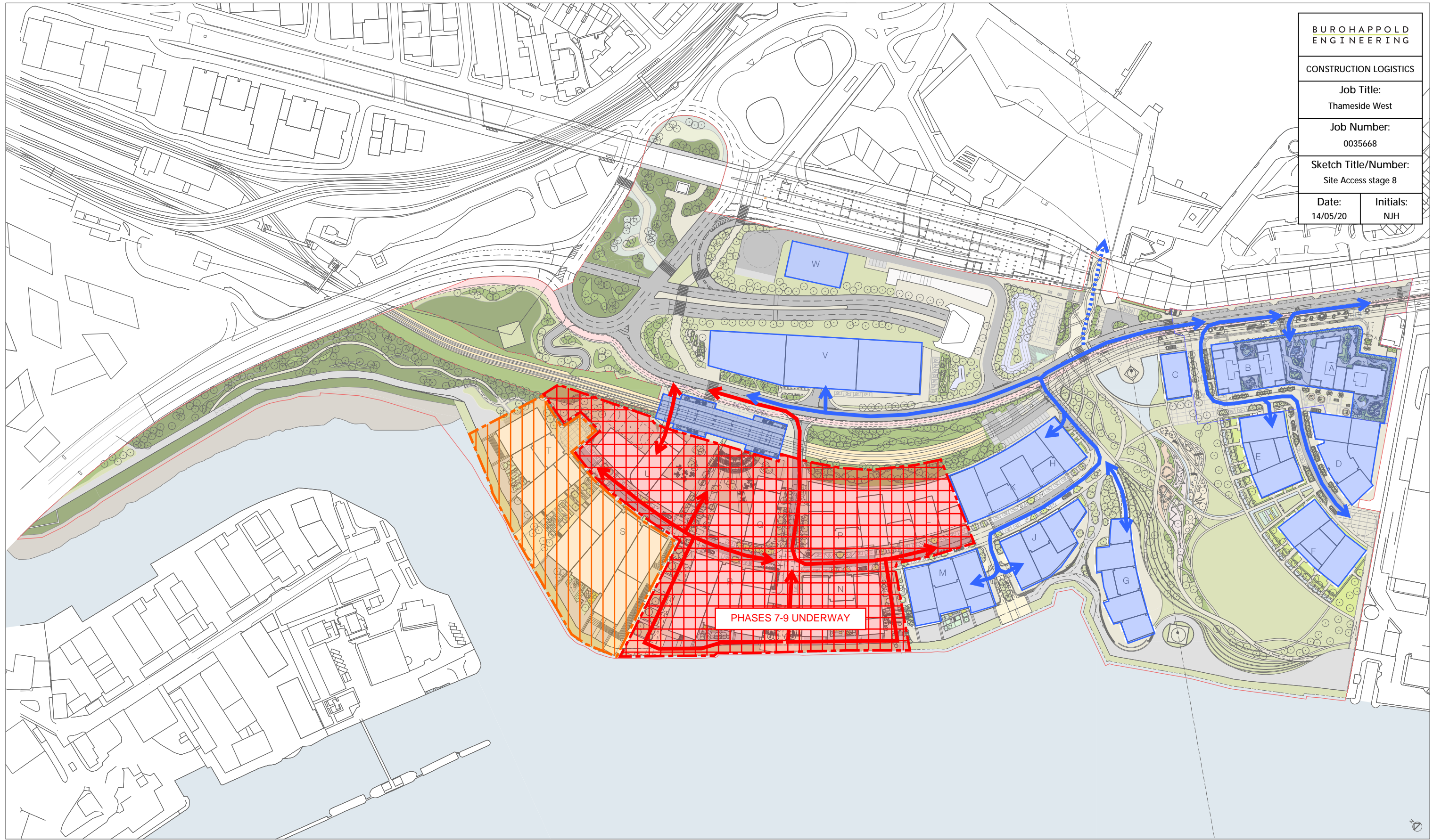


TSW support space (storage, laydown etc)



Primary non-vehicular access

**Notes:**  
Large section of TSW site potentially available for materials storage/processing, laydown, welfare facilities, etc.  
Construction access can be segregated from public access to completed phases.



Thameside West (TSW) works site



DCO / tunnel / station etc works sites



Complete/occupied buildings



TSW site access



DCO / tunnel / station works access



Public access



Time-restricted access



TSW support space (storage, laydown etc)



Primary non-vehicular access

Notes:  
North-western section of TSW site potentially available for materials storage/processing, laydown, welfare facilities, etc.  
Construction access can generally be segregated from public access to completed phases.