

Thameside West

River Wall Update Drawing

May 2020



PREAMBLE

Silvertown Homes Limited (SHL) and Greater London Authority Land and Property (GLAP) have submitted a hybrid planning application to the London Borough of Newham (LBN) for the redevelopment of the Thameside West site, accessed off Dock Road in Newham (the Site).

SHL is a property development company and joint land owners of the Site. SHL has over 65 years combined experience at delivering high quality regeneration projects across London. GLAP is a subsidiary corporation of the Greater London Authority (GLA) and took over assets and liabilities from the London Development Agency (LDA) in 2012. GLAP is primarily focused on delivering genuinely affordable homes and jobs for London.

The proposal is to construct a new high-quality residential-led mixed-use development comprising new homes, new industrial floorspace, a new local centre, a new primary school and nursery school, new community facilities, a new public park (with associated outdoor play facilities), enhanced SINC and over 800m of new riverside walk along the River Thames with ecological / biodiversity enhancements. This development has been designed to focus its community hub around the delivery of a new Dockland Light Rail (DLR) station that is proposed to be constructed on the Site by Transport for London's (TfL) in 2023.

The proposals have been designed by Foster & Partners, John McAslan & Partners, Patel Taylor and the wider project team (listed, right) taking into account comments provided by local residents during summer and public exhibition events and comments provided during pre-application discussions with a variety of statutory and non-statutory interests, including LBN and its Design Review Panel (DRP), the Greater London Authority (GLA), Transport for London (TfL), Environment Agency (EA), Port of London Authority (PLA) and London City Airport (LCA).

This document is one of a suite of planning application documents submitted to LBN, including an Environmental Statement. The planning application is available to review at LBN's office or using LBN's online services:

Search for planning application reference number 18/03557/OUT at: <https://pa.newham.gov.uk/online-applications/search.do?action=simple>

The planning application can also be viewed on the GLA's website at: <https://www.london.gov.uk/what-we-do/planning/planning-applications-and-decisions/public-hearings>

PROJECT TEAM

GREATERLONDONAUTHORITY

**BARTON
WILLMORE**

Foster + Partners

JOHN McASLAN + PARTNERS

Patel Taylor

Tavernor

**BURO HAPPOLD
ENGINEERING**

MEINHARDT

AnsteyHorne

SYSTRA

Aviaire WILDLIFE HAZARD
MANAGEMENT
CONSULTANTS
Improving safety from the ground up.

**Winckworth
Sherwood**

MOLA

JLL Achieve
Ambitions

**LONDON
COMMUNICATIONS
AGENCY**

realm
virtually, anything is possible.

© Buro Happold Limited or its group companies. All Rights reserved. Buro Happold and its group companies assert (unless otherwise agreed in writing) their rights under s.77 to 89 of the Copyright, Designs and Patents Act 1988.

DO NOT SCALE THIS DRAWING.

HEALTH AND SAFETY INFORMATION
 IN ADDITION TO THE HAZARDS/RISKS NORMALLY ASSOCIATED WITH THE TYPES OF WORK DETAILED ON THIS DRAWING, NOTE THE FOLLOWING CONSTRUCTION.

MAINTENANCE/CLEANING/OPERATION.

DECOMMISSIONING/DEMOLITION.

NOTES
 1. FOR DETAILS OF CROSS SECTIONS REFER TO DRAWINGS 035668-CW5211 TO 035668-CW5222.

01 FOR MARCH 2020 AMENDMENTS 24/03/2020 JF DKP

00 FOR HYBRID PLANNING APPLICATION 30/10/18 MD DKP

Rev	Description	Date	Drn	Chd
01	FOR MARCH 2020 AMENDMENTS	24/03/2020	JF	DKP
00	FOR HYBRID PLANNING APPLICATION	30/10/18	MD	DKP

FOR PLANNING

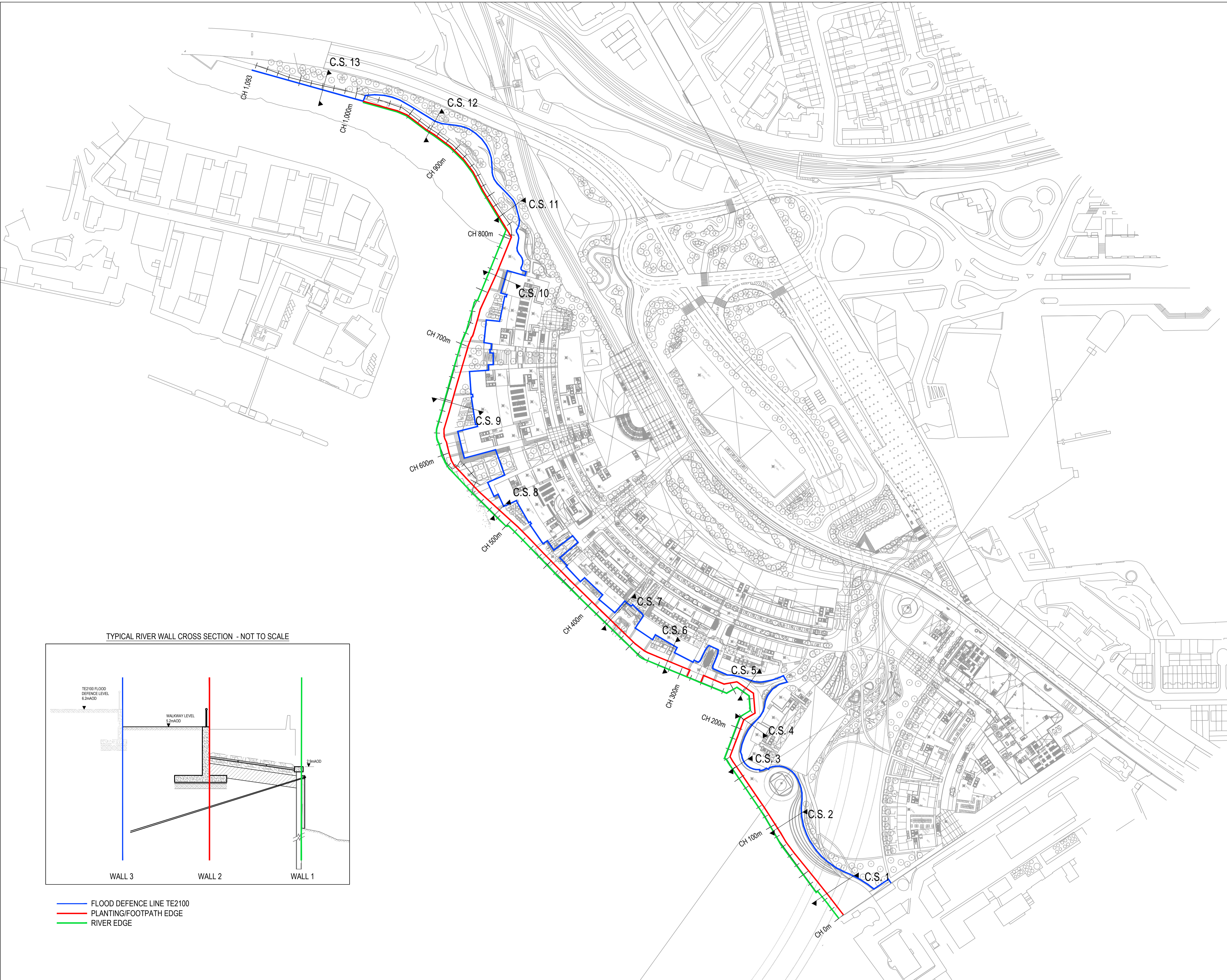
Status of drawing

**BUROHAPPOLD
ENGINEERING**

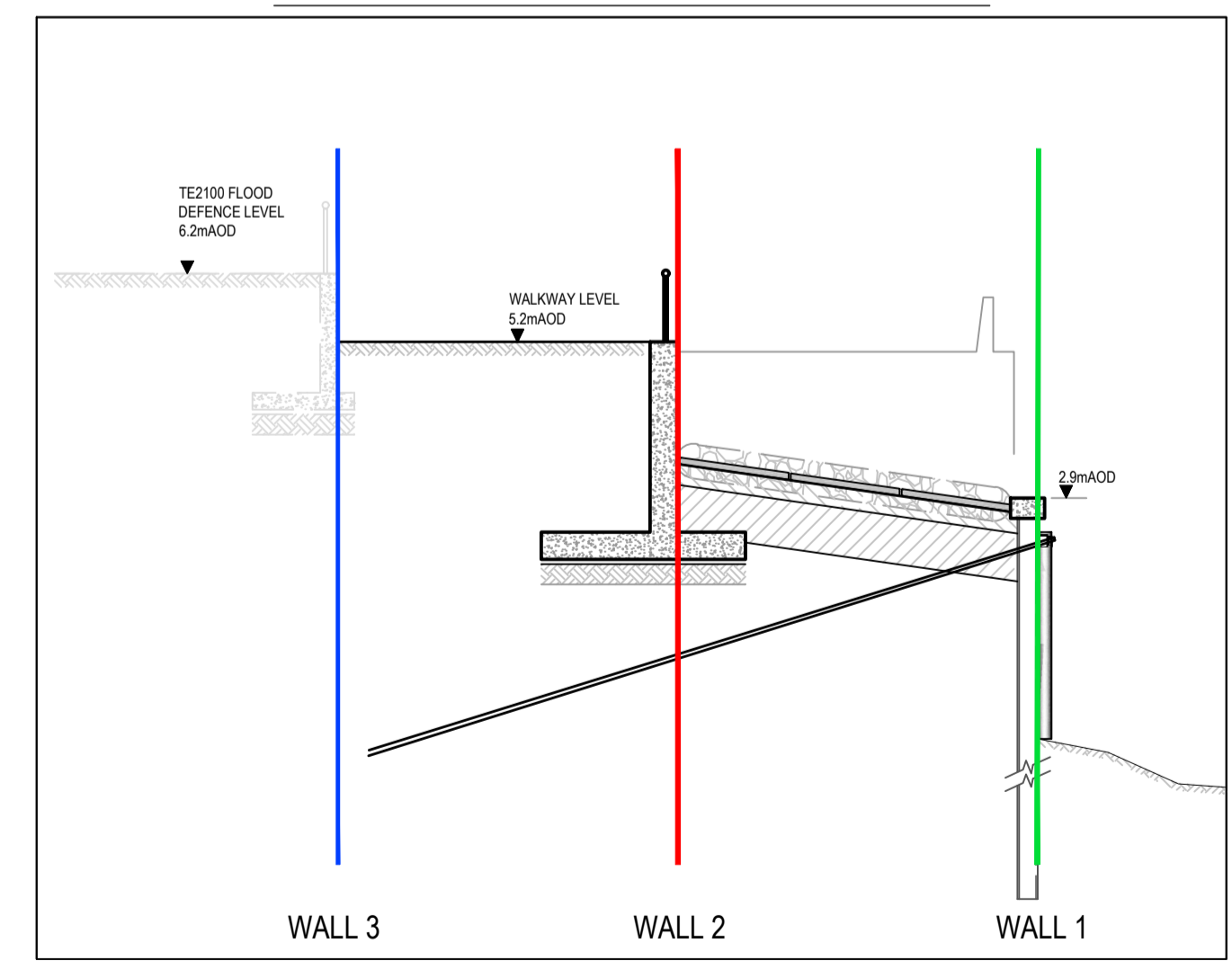
17 Newman Street London W1T 1PD UK
 Tel: +44 (0)20 7927 9700 Fax: +44 (0)20 767 4145 Email: 035668@burohappold.com Web: www.burohappold.com

Architect
 Project **THAMESIDE WEST**
 Drg Title **EXTENT OF RIVER WALL WORKS**

Scales@A1 1:1500	Job No. 035668
Drawn by MD	Drawing No. CW5210
Checked by DKP	Rev 01
Date MARCH 2020	



TYPICAL RIVER WALL CROSS SECTION - NOT TO SCALE



— FLOOD DEFENCE LINE TE2100
 — PLANTING/FOOTPATH EDGE
 — RIVER EDGE