



**General Notes**  
DO NOT SCALE. All dimensions must be checked on site, errors are to be reported.

All illustrated material is subject to copyright. Unless otherwise agreed in writing, all rights to use this document are subject to payment of Architect's charges. This document may only be used for the express purpose and project for which it has been created and delivered, as notified in writing by the Architect. This document may not be otherwise used or copied. Any unauthorised use of this document is at the user's sole risk and without limiting the Architect's rights the user releases and indemnifies the Architect from and against all loss so arising.

Contractors must ensure that cross referenced drawings and specifications noted on these drawings are checked on a regular basis to ensure that the latest revisions are used.

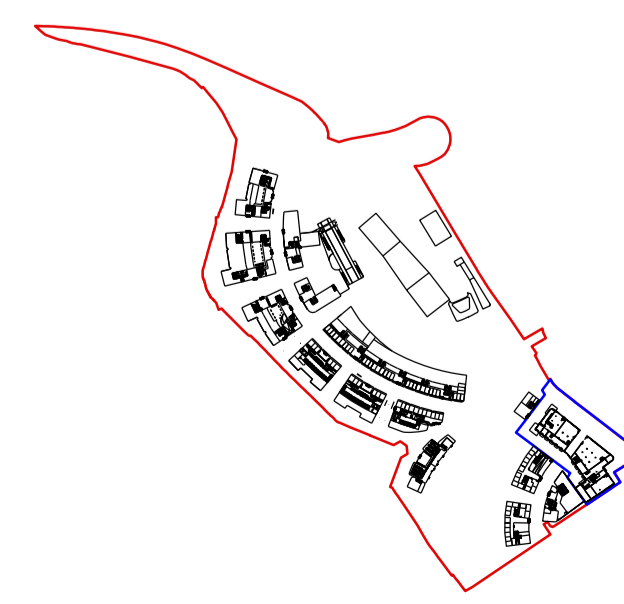
**Drawing Notes**

- Tree - Evergreen
- Tree - Deciduous with structural interest during winter
- Tree - Broadleaves parkland
- Tree - Broadleaves with colour interest during autumn
- Tree - Woodland
- Tree - Specimen
- Tree - Wetlands and habitats, native species dominant

**Key**

- Masterplan application boundary
- Detail component boundary

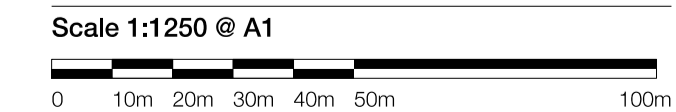
**Key Plan**



**Title**  
Masterplan landscape  
Tree strategy

**Project**  
Thameside West Landscape

**Scale**  
1:1250 @ A1                      1:2500 @ A3



Issue Record	By	Chk	Date
P07 Parking /UGF amendments	RM	-	13.05.2020
P06 Parking amendments	TS	RM	16.04.2020
P05 DEF parking area	TS	RM	23.03.2020
P04 Call in	TS	TS	16.03.2020

**Drawing Number**  
522-PT-MP-TYP-DR-L-PL-1028

**Status**  
S2 - For Information

**Revision**  
P07

Patel Taylor  
48 Rawstorne Street  
London EC1V 7ND  
T +44 (0)20 7278 2323  
www.pateltaylor.co.uk