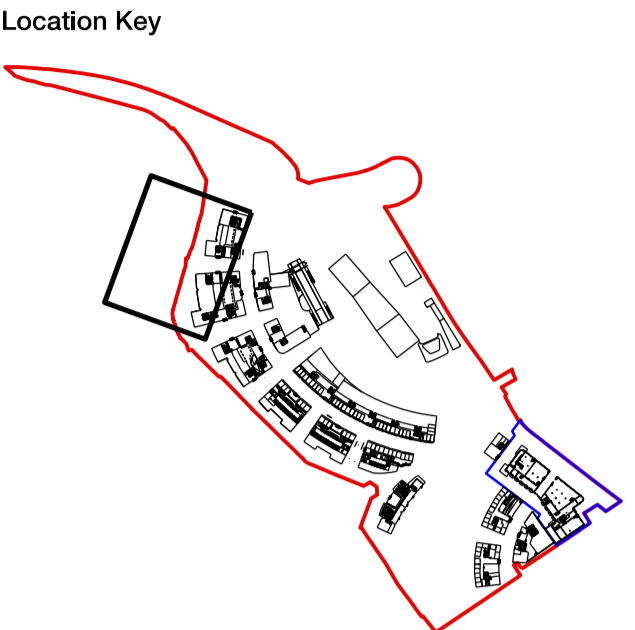


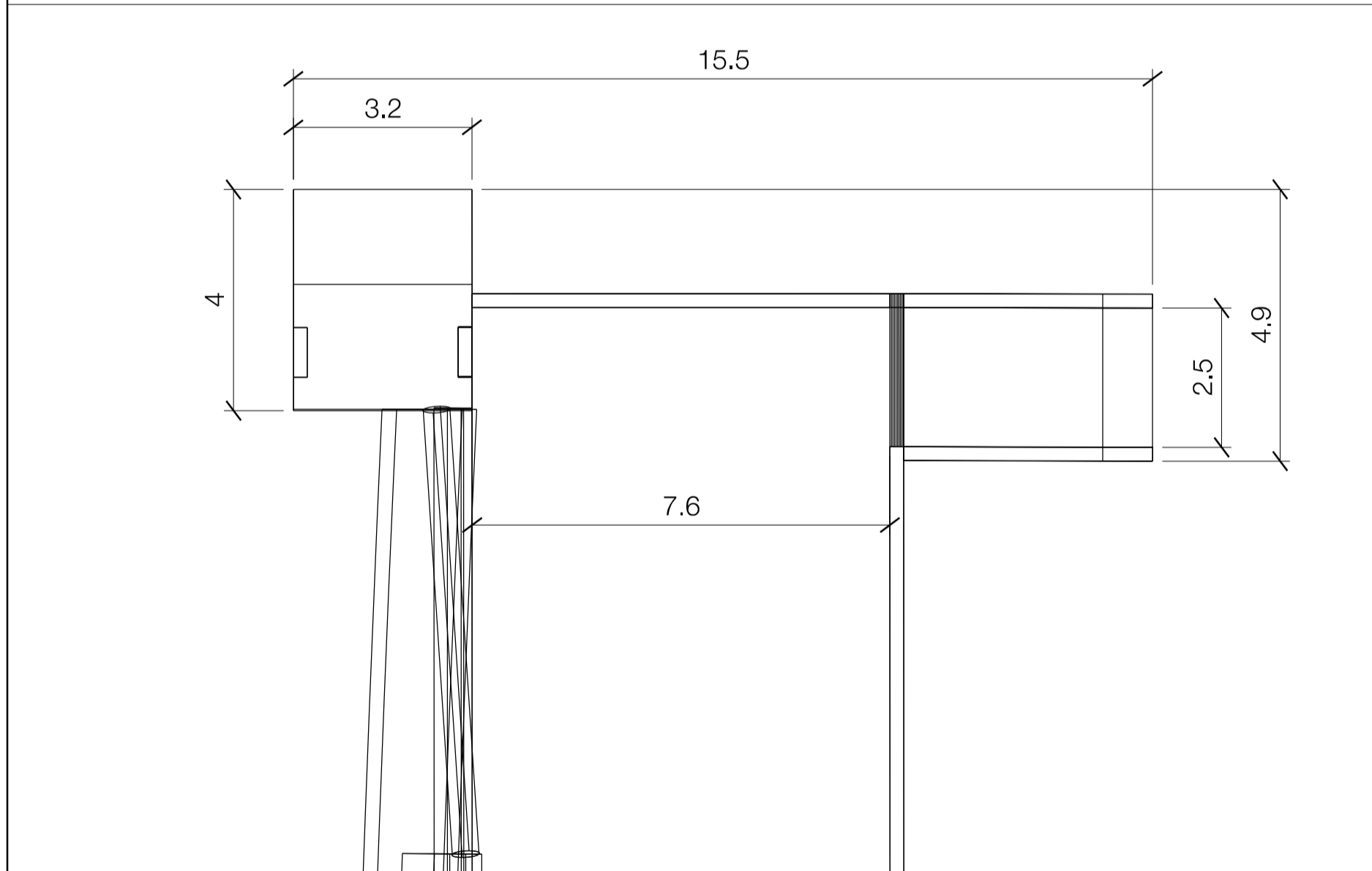
General Notes
 DO NOT SCALE. All dimensions must be checked on site, errors are to be reported.
 All illustrated material is subject to copyright. Unless otherwise agreed in writing, all rights to use this document are subject to payment of all Architect's charges. This document may only be used for the express purpose and project for which it has been created and delivered, as notified in writing by the Architect. This document may not be otherwise used or copied. Any unauthorised use of this document is at the user's sole risk and without limiting the Architect's rights the user releases and indemnifies the Architect from and against all loss so arising.
 Contractors must ensure that cross referenced drawings and specifications noted on these drawings are checked on a regular basis to ensure that the latest revisions are used.



- Colour Code**
- Safeguarded access
 - 4.5m minimum clear vehicle route
 - Safeguarded waterfront
 - Dashed line: 5m minimum offset from river wall
 - Masterplan
 - Application boundary

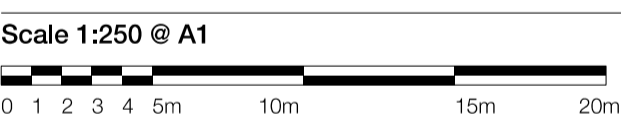
Drawing Notes
 Safeguarded areas are based upon the illustrative masterplan. Illustrative landscaping, including steps, raised platforms, tree planting etc. would be modified in the event of a bridge landing in these locations.
 All detailed design of architecture and landscape is indicative and subject to planning approval by Reserved Matters. Exact design and positioning of a bridge landing will be subject to planning approval.

- River wall +5.20m AOD
- Outer line of intertidal planting +2.70m AOD
- Application boundary
- Projecting jetty +5.20m AOD



02 Inset detail - illustrative bridge landing based on City Island crossing
 1:100 @ A1

01 Extract from masterplan at River Lea
 1:250 @ A1



Issue Record	By	Chk	Date
P02 Illustrative landing inset plan	FM	-	07.05.2020
P01 First prepared	FM	-	27.04.2020

Title
 Masterplan
 Waterfront safeguarding
 River Lea crossing

Project
 Thameside West Landscape

Scale
 1:250 @ A1 1:500 @ A3

Status
 S2 - For Information **Revision P02**

Drawing Number
 522-PT-MP-TYP-DR-L-PL-1039

Patel Taylor
 48 Rawstorne Street
 London EC1V 7ND
 T +44 (0)20 7278 2323
 www.pateltaylor.co.uk

