

5.39 Thameside East

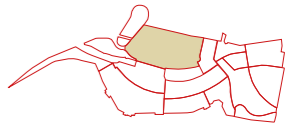
Public Realm and Active Yards

The east of the Site is characterised by a number of roads and non-residential uses which define the space. The landscape strategy aims to respond to the more industrial and urban character by providing for urban sports and creating a welcoming pedestrian experience for those walking into the site from the Royal Victoria DLR station or Cable Car.

Native tree and resilient underplanting provides a green lining to Dock Road and the industrial / infrastructure uses within this area.

1. Pedestrian crossing over roadway and under DLR rail track
2. Sculptural interactive pathways
3. Industrial service yard
4. Native woodland planting
5. DLR embankment
6. Cycle connection along Dock Road
7. New DLR station and Plaza
8. Climbing features
9. BMX pump track
10. MUGA ball court
11. Outdoor fitness trail
12. Flyunder connection to Victoria Docks
13. Silvertown Tunnel building
14. Silvertown Tunnel Approach
15. Industrial building Plot V
16. Utility building Plot W





A journey has been envisioned to blend the industrial site with the neighbouring ecology park and under the Silvertown Flyover to provide a safe route with industrial heritage that results in a metamorphosis of landscape and infrastructure, an archetypal dialogue between the tame and the wild.

This idea has been tested in many post-industrial landscapes to reclaim the usefulness of a space without over designing planting and materiality. Using corten and more native planting intentionally mimics an older industrial estate to provoke ideas that all landscapes aren't manicured and perfect nor should they be.



Soft, natural planting



Industrial setting



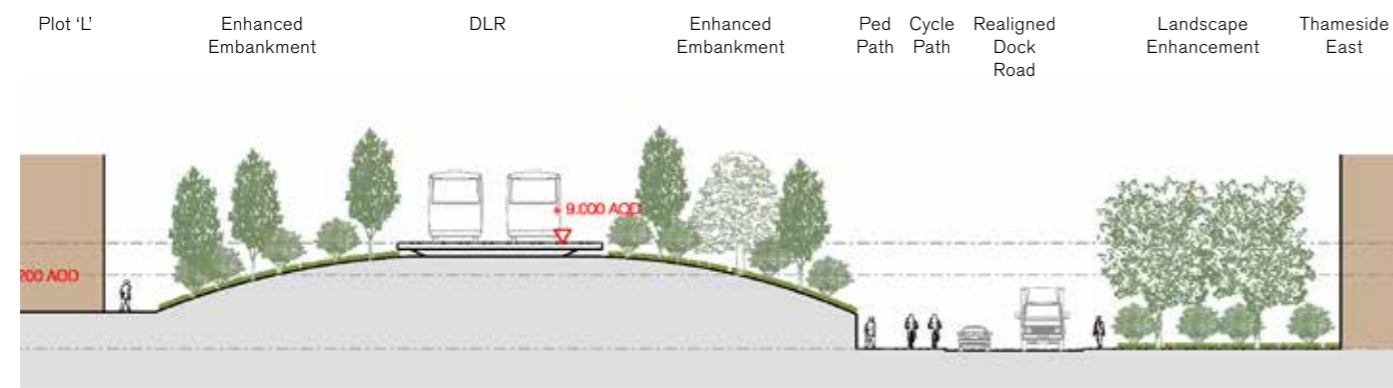
Buffer tree planting



Cobbled paving



Industrial style paving



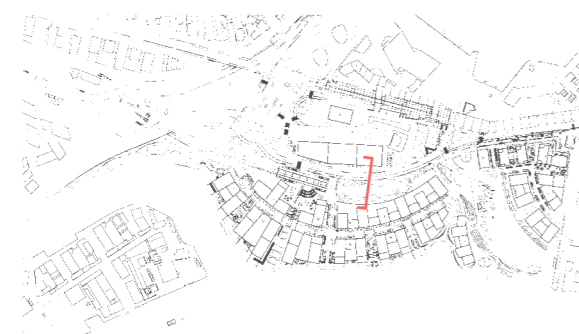
Yard precedent



Climbers and green walls



Weathered steel planters



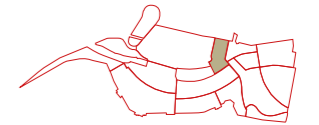
Soft, natural planting



Cobbled pavers

5.40 Silvertown Yard

Public Realm and Active Yards



Building on the success of the Royal Docks' open water swimming and wakeboarding centres, a BMX 'pump track' circuit and ball court MUGA is proposed for an area of land alongside the Silvertown Way at the gateway into the site from the Docks.

A pavilion with raised seating and secure storage for equipment provides a viewing platform for spectators to the BMX and court sports

Wrapping around the parking and service cores at the southern end of the Thameside East industrial unit, an urban climbing centre would compliment the BMX track and water sports in the Docks.

Informal climbing features such as low walls and 'boulders' encourage play and engagement with the public realm.



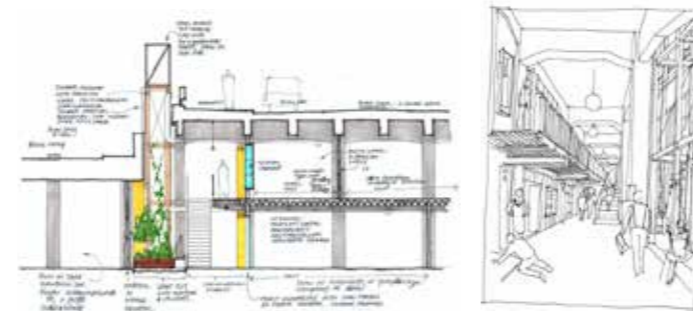
BMX pump track precedent



Fitness equipment



Climbing walls



Sketch concepts from 'Silvertown Flyunder'



Climbing walls



Sports provision within sculptured paving

1. BMX pump track
2. Pavilion
3. Climbing centre
4. Informal climbing features
5. MUGA
6. Boundary planting
7. Spill out terrace for Silvertown Flyunder
8. Access below Silvertown Flyover
9. Parking for Waterfront Studios



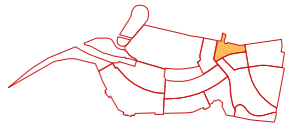
MUGA



Sports provision

5.41 Dock Gateway

Public Realm and Active Yards



Dock Gateway is a key entrance into the Development site, marked by the Cable Car pylon and flowing below both the Silvertown Way and the DLR viaducts.

Dock Gateway and Dock Park are proposed to have a common landscape and materiality. A strong paving pattern is proposed to connect the two places making a strong pedestrian/cyclist crossing.

Landscape tree and softscape planters are proposed without impeding servicing and emergency vehicles.

A trail for urban sports and fitness is proposed to connect the active lifestyle options of the Docks and the new Park.

An enhanced entrance forecourt to the existing Waterfront Studios and future phase building will also be enhanced to add a marker to compliment Dock Park.



Multi-textured paving and planting



Flyover precedent



Urban sports and fitness



Natural form pathways



Flyover precedent



Pedestrian, industrial connections



Sculptured planting



Wildflower planting



Mixed tone paving