

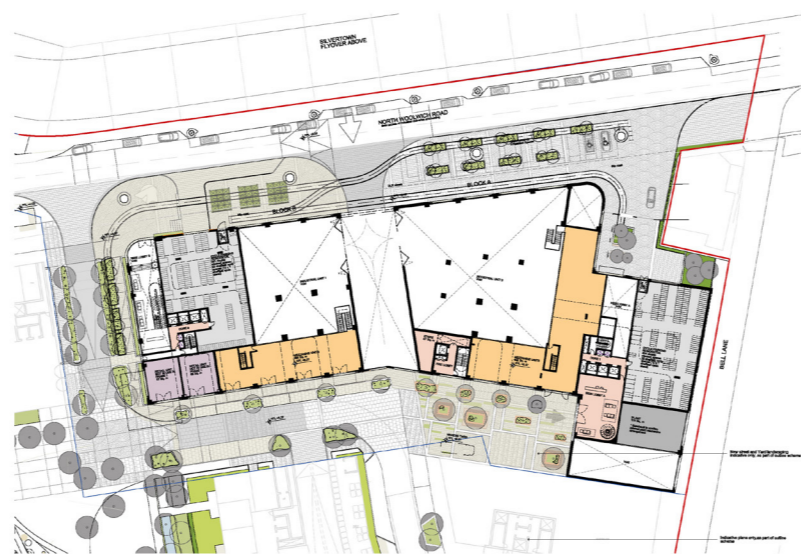
Public Realm

GROUND FLOOR PLAN
TEMPORARY CONDITION - SUBMITTED SCHEME



Cycling Access

MEZZANINE FLOOR PLAN

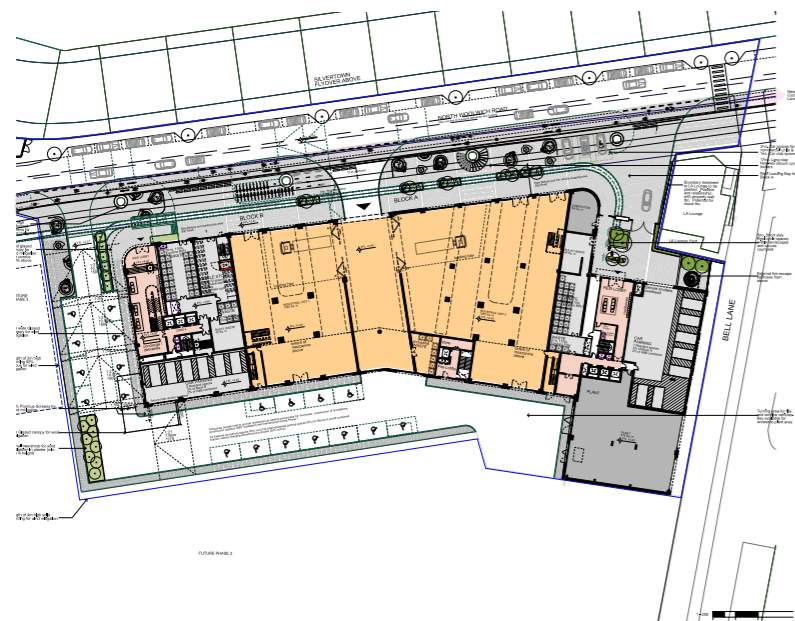


Plinth Visual



VIEW FROM PARKSIDE CRESCENT

GROUND FLOOR PLAN
TEMPORARY CONDITION - PROPOSED AMENDMENTS



MEZZANINE FLOOR PLAN
NEW BLOCK B RETAIL AND CONNECTION WITH BIKES PARKING



VIEW FROM PARKSIDE CRESCENT



2.0

Proposed Architectural Changes

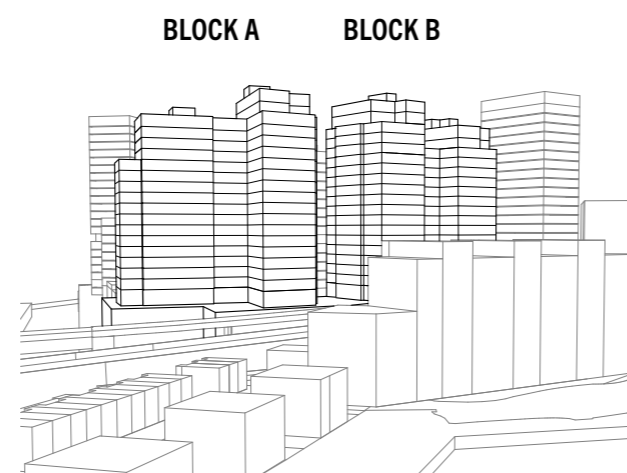


2.1 Massing amendments

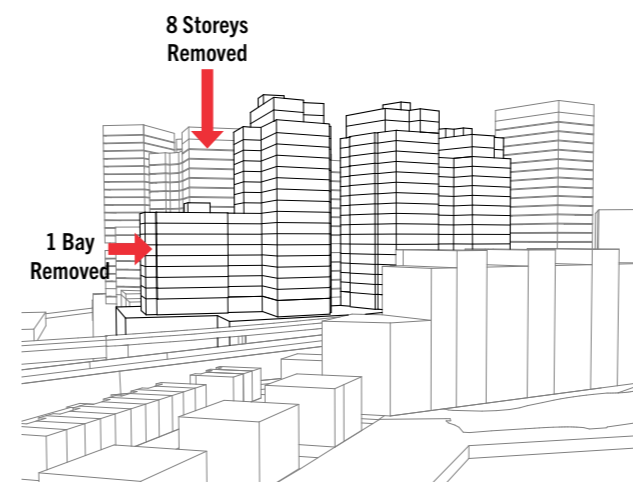
Through a month long process of workshops with the GLA officers, a number of extensive amendments were made to the overall massing of Phase 1. These were also reviewed against the existing context and amendments to the emerging context in the rest of the masterplan via Verified Views.

The following amendments were made:

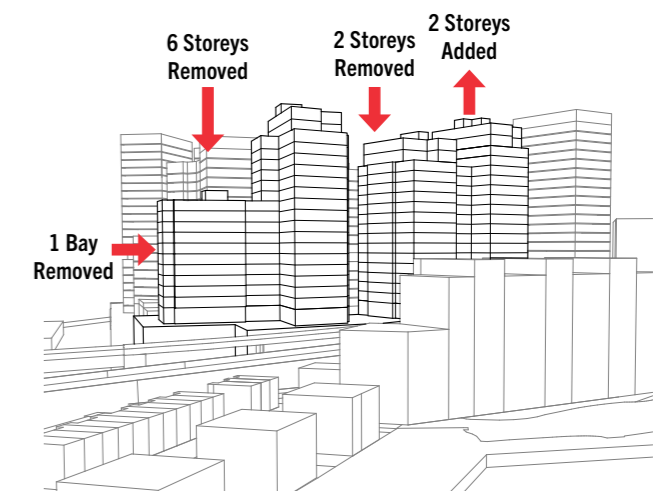
- 6 storeys were removed from Block A, Core 1
- No change to Block A, Core 2
- 2 storeys were added to Block B, Core 3
- 1 storey was removed between Cores 3 and 4 of Block B
- 4 storeys were removed from Block B, Core 4
- 1 window bay was removed from Block A, Core 1 and the building was set back approximately 3m further away from the boundary with the SIL site
- The distance between Block A and B has been increased, so that single-aspect flats facing each other on Block A and B are a minimum of 18m apart.



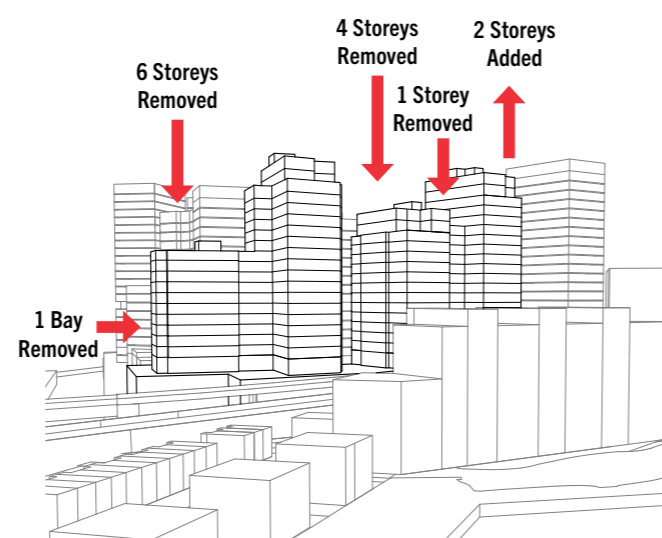
GLA Workshop 01 (submitted scheme)
11th December 2019



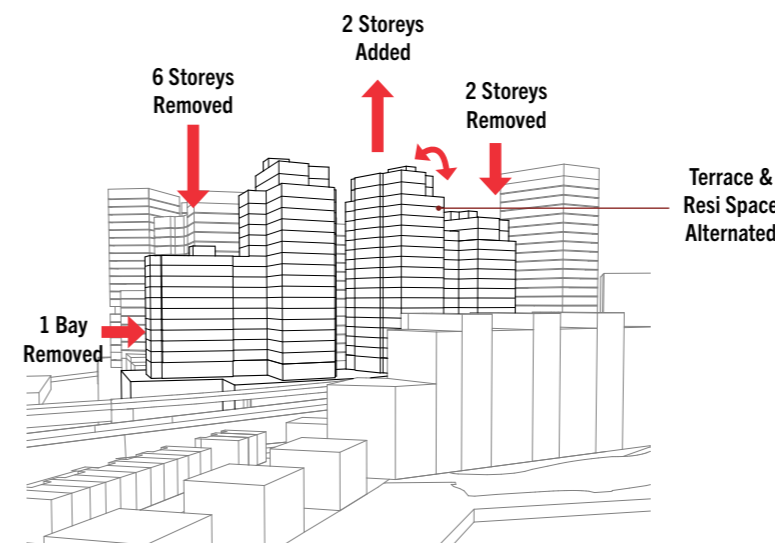
GLA Workshop 02
9th January 2020



GLA Workshop 03
15th January 2020



GLA Workshops 04, 05, 06
22nd January 2020
28th January 2020
6th February 2020



Aviation Workshop - reviewed by GLA
14th February 2020



PREVIOUS VIEW 4



PROPOSED VIEW 4



PREVIOUS VIEW 8



PROPOSED VIEW 8