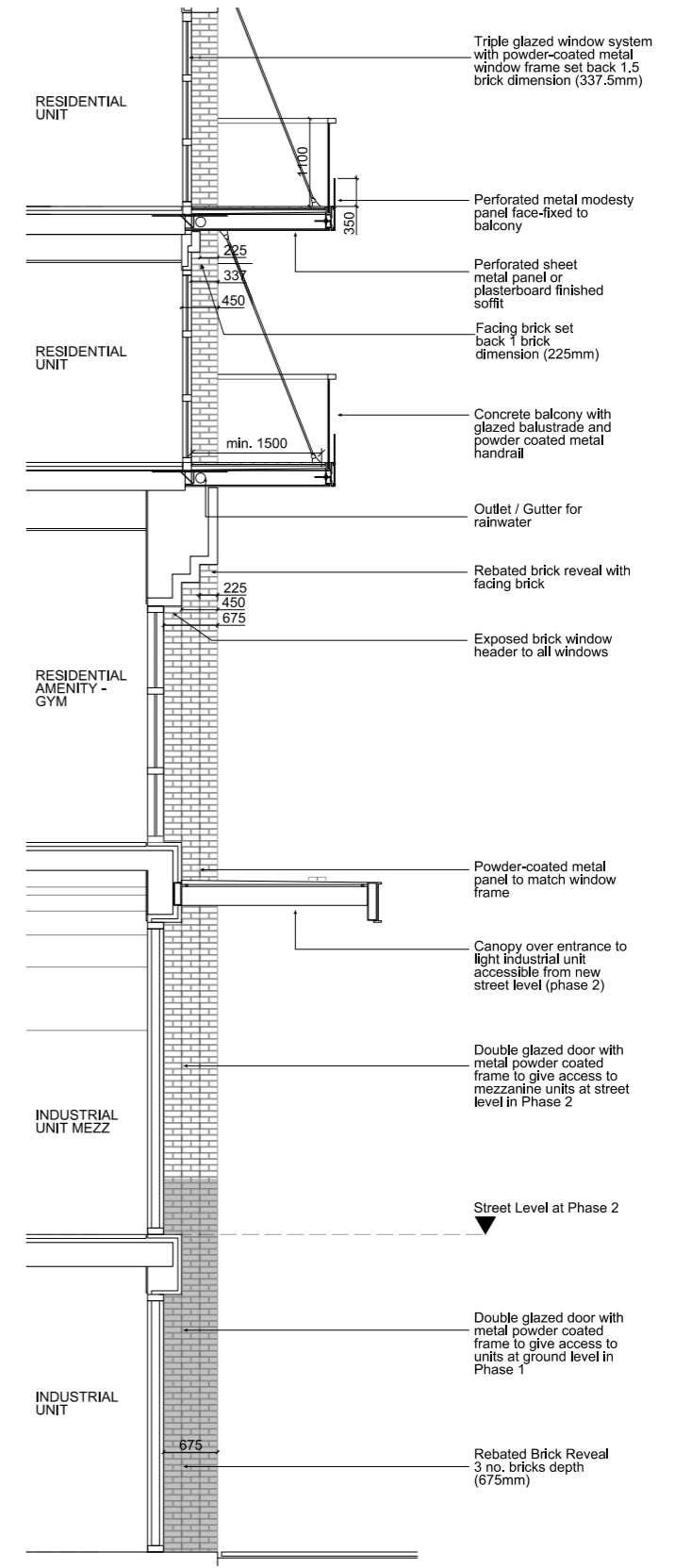
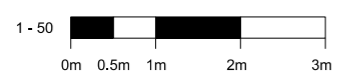
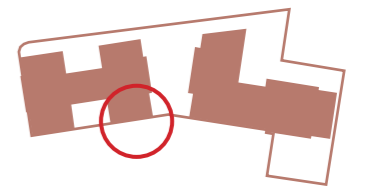




01 TYPICAL BAY 01 - ELEVATION  
1:50



02 TYPICAL BAY 01 - SECTION  
1:50



Brick face set back 1 brick dimension to express double height grid

Soldier course over set back brick plane and windows

Window frames is set back 1.5 brick dimension (337.5mm)

Black painted pre-cast sill under window

Powder-coated aluminium header detail over windows

Crittall style windows with two opening panes

Extended pre-cast sill at base of double height grid



PROPOSED MIDDLE BAY - BLOCK A

Solid glazed canopies around the corner and over mezzanine units protect pedestrians from high wind speeds

Panels on residential windows protect units from overheating

Wind buffer screens are made of expanded metal mesh to allow for planting to grow over

Metal panels at street levels are made of galvanised steel with perforations. This allows for backlit signage to be integrated into the overall strategy.

Reveals around openings at the first three levels are rebated brick details. Reveals are 3 brick dimensions deep (675mm)

Street level at Phase 2 will activate mezzanine level units

Glazed red bricks define the base of the building

Moveable planter between screens

PROPOSED VIEW OF SOUTH WEST CORNER

