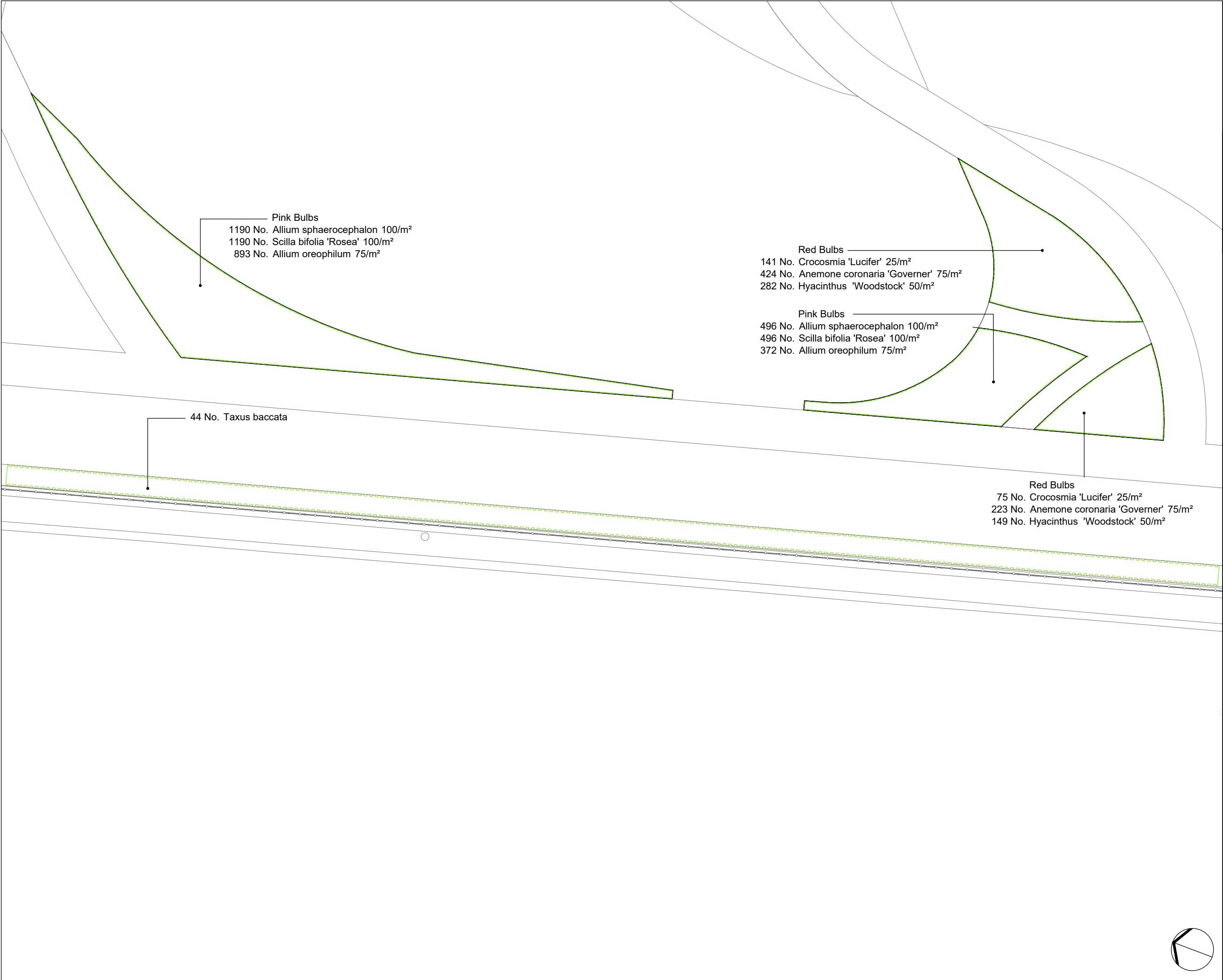


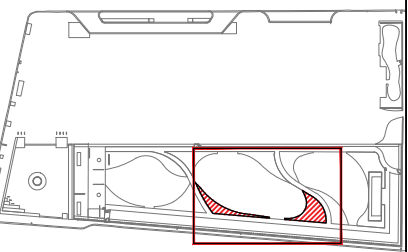
P:\LONDON PROJECTS\2017\1754_KENSINGTON FORUM HOTEL\01 CAD\02 SHEET LAYOUT\EXA_1754 PLANTING PLAN SHEET 14 OF 20.DWG



No dimensions are to be scaled from this drawing.
All dimensions are to be checked on site.
Area measurements for indicative purposes only.

This drawing is the property of Exterior Architecture Ltd.
No part of the drawing may be reproduced in any manner without permission from Exterior Architecture Ltd.

Client
Queensgate Bow UK Holdco Ltd



---	---	---
---	---	---
---	---	---
---	---	---
---	---	---
---	---	---
---	---	---
---	---	---
---	---	---
A	Issued For Planning	15.06.18
Rev	Description	Date

EXTERIOR
ARCHITECTURE

LONDON: Studio 1S, Hewlett House, Havelock Terrace,
London, SW8 4AS
MANCHESTER: Studio 537, The Royal Exchange, St Anns
Square, Manchester, M2 7DH

E-Mail: office@exteriorarchitecture.com
Web: www.exteriorarchitecture.com

Project title
**KENSINGTON FORUM HOTEL
LONDON**

Drawing title
**PLANTING PLAN BULBS + HEDGES
SHEET 2 OF 6**

Issued By	London	T: 020 7978 2101
Scale	1:125 @ A3	Drawn EXA
Status	PLANNING	Checked TO
Date	15.06.18	Approved SM
Drawing number	EXA_1754_P_214	Revision
		A

