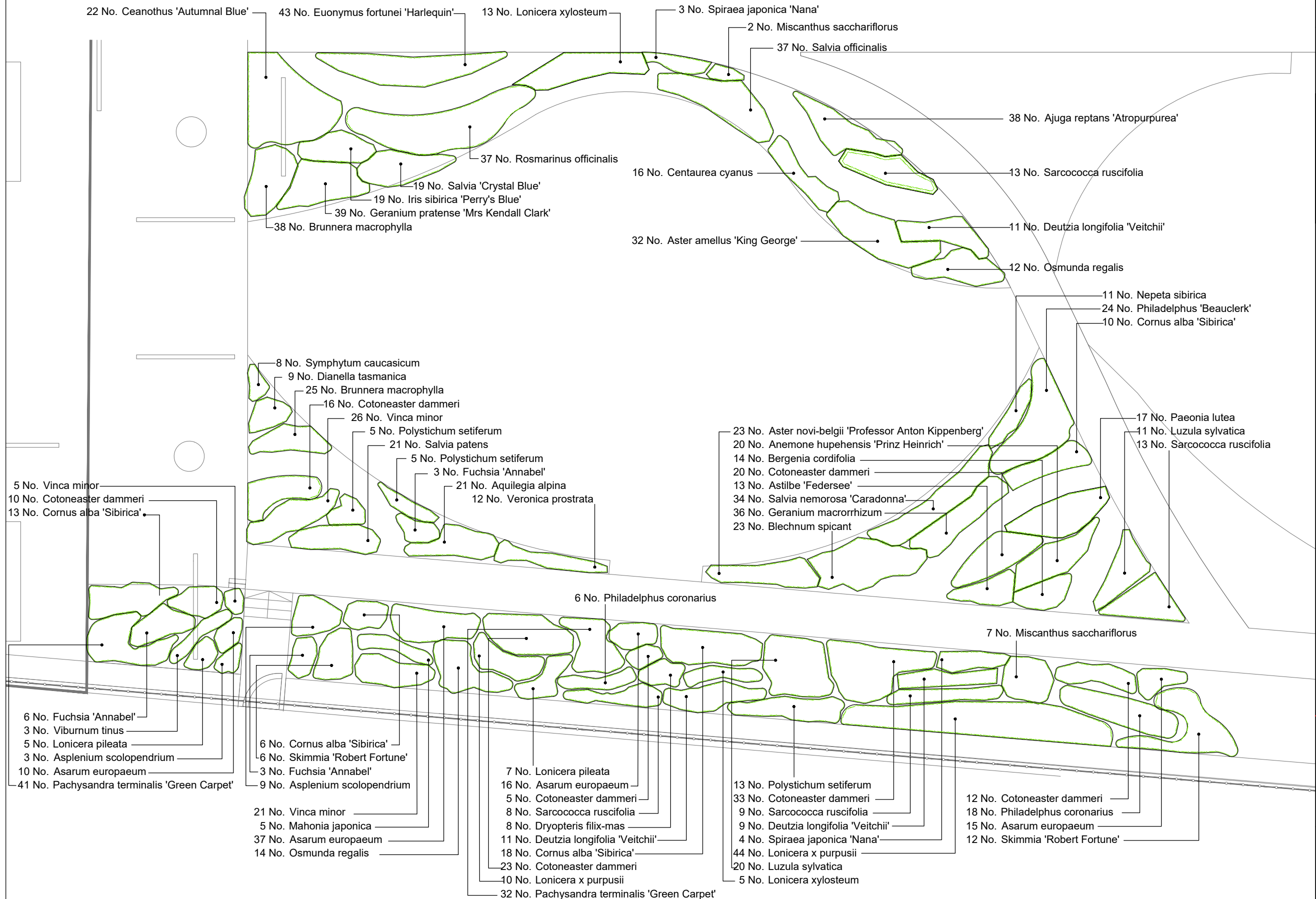
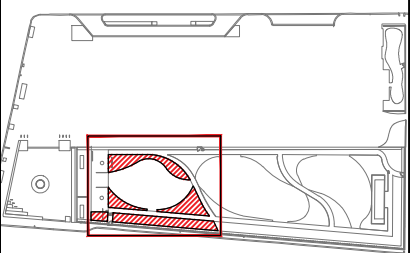


Client
Queensgate Bow UK Holdco Ltd



-----	-----	-----
-----	-----	-----
-----	-----	-----
-----	-----	-----
-----	-----	-----
-----	-----	-----
-----	-----	-----
-----	-----	-----
-----	-----	-----
A	Issued For Planning	15.06.2018
Rev	Description	Date

EXTERIOR
ARCHITECTURE

LONDON: Studio 1S, Hewlett House, Havelock Terrace,
London, SW8 4AS
MANCHESTER: Studio 537, The Royal Exchange, St Anns
Square, Manchester, M2 7DH

E-Mail: office@exteriorarchitecture.com
Web: www.exteriorarchitecture.com

Project title
**KENSINGTON FORUM HOTEL
LONDON**

Drawing title

PLANTING PLAN SHRUBS +
HERBACEOUS SHEET 1 OF 8

Issued By	London
Scale	1:125 @ A3
Status	PLANNING
Date	15.06.2018

Drawing number
EXA_1754_P_205

T: 020 7978 2101
Drawn EXA
Checked TO
Approved SM

Revision
A