



Our Ref: LT/lt/16336

Thavies Inn House  
3-4 Holborn Circus  
London EC1N 2HA

15 May 2019

020 7936 3668

info@delvapatmanredler.co.uk  
www.delvapatmanredler.co.uk

Neil Wells  
Quod  
Ingeni Building, 17 Broadwick Street  
London  
W1F 0DE

**BY EMAIL ONLY**

Dear Neil

**Pentavia, Mill Hill, London NW7 2ET – Addendum Internal Daylighting Assessment**

Delva Patman Redler LLP have been instructed by Meadow Residential to reassess the internal daylight adequacy to the habitable rooms proposed within the lowest two residential floors of Pentavia, Mill Hill.

Following the issue of the updated application documents at the end of March 2019, the GLA highlighted the risk of overheating of certain rooms and units within the scheme. As a result, a number of amendments have been made by Arney Fender to the internal configurations of the units including the reduction in window sizes and introduction of additional balconies and/or winter gardens.

The overall scale and general massing itself remains the same as per the report from March 2019.

The assessments have been undertaken in line with guidance in the BRE site layout planning for daylight and sunlight 'A Guide to Good Practice (2011)' (BRE Guide). This is the publication specifically identified in the London Borough of Barnet Policy by which daylight should be assessed. Habitable rooms are described within the BRE guide as kitchens; living rooms; dining rooms and bedrooms.

The BRE guide states that the interior daylight provision for new rooms should be checked using the ADF method as described in appendix C of the publication which in turn references the British Standards Institution code of Practice for day lighting (BS8206 part 2). The ADF assessment methodology takes into account factors including the VSC value measured at the centre point of the window serving the room in question, the internal surface area of the room, the window glazing transmittance, and the window size. British Standard 8206, Code of Practice for Daylighting recommends ADF values of 1% in bedrooms, 1.5% in living rooms and 2% in kitchens.

In order to complete the assessment a 3D CAD model of the site and surrounding buildings has been created using:

**Existing & Surrounding:**  
Zmap 3D contextual model

**Proposed:**

Arney Fender Katsalidis:

Dwg No's:

A10-00-01 rev P1

A10-01-01 rev P1

3D model received 13/05/2019 A\_44032\_MH 3D Model.dwg

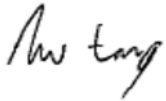
**Results & Summary**

The windows and rooms which have been considered for assessment within the ground floor and first floors of the scheme shown on 16336/LOC/862-867 in appendix A.

The revised analysis demonstrates that as a consequence of the amendments to the internal configurations and window sizes that of the 489 rooms assessed at ground and first floors throughout the 18 blocks that 359 rooms (73.4%) will comfortably comply with the BRE guidelines for internal daylight adequacy.

Overall the revised assessment demonstrates that as a result of the amendments to the internal configurations that these improve the pass rate for these two floors from the 70.8% as reported in March 2019 increasing this by 2.6%.

Yours sincerely



Lok Tang (MSc)

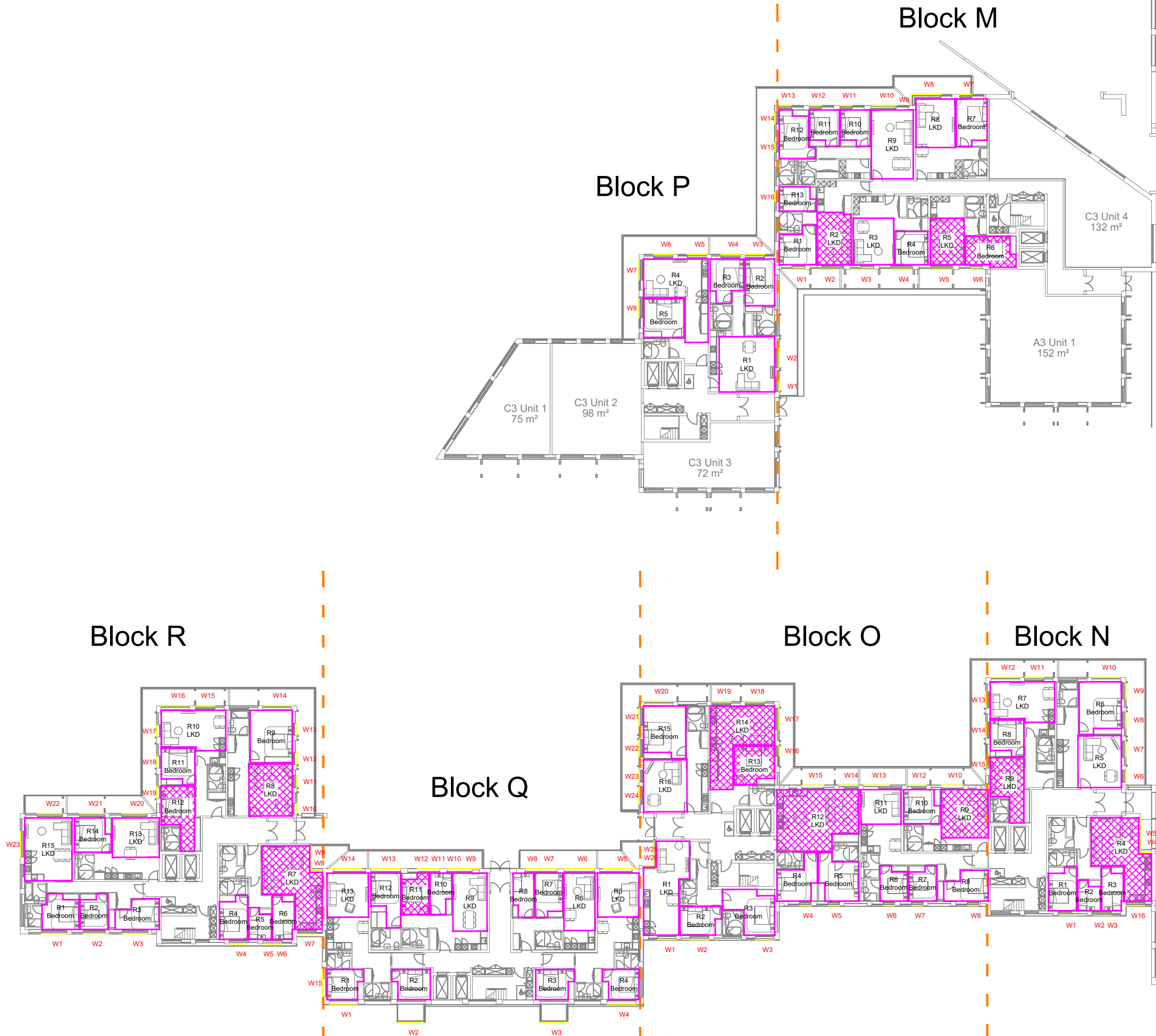
**Senior Associate**

[lok.tang@delvapatmanredler.co.uk](mailto:lok.tang@delvapatmanredler.co.uk)

**APPENDIX A**

**INTERNAL DAYLIGHT ADEQUACY TABLES**

**16336/LOC/862-867**



Indicative

Floor Plan

Room Layouts

Unit Layouts

Window Tested  
Daylight only

Window Tested  
Daylight & Sunlight

W1/08

W1/08

**SOURCE DATA**

Drawings Used:  
Existing and surrounding buildings:  
ZMapping:

Proposed Scheme:  
Arney Fender Katsalidis:  
Dwg No's: A\_44032\_MH 3D Model.dwg (3D Model received 13.05.2019)  
A\_44032\_MH - A10-00-01 - GA\_LEVEL  
00\_OVERALL PLAN  
A\_44032\_MH - A10-01-01 - GA\_LEVEL  
01\_OVERALL PLAN

**NOTES**

Standard Double Glazed Transmittance value of 68% used for ADF assessments.

Cross Hatched Rooms do not comply with BS 8206-2:2008.


REV	Description	Drawn	Chk'd	Date
<b>DELVA PATMAN REDLER</b> Chartered Surveyors				
Thavies Inn House 3-4 Holborn Circus London EC1N 2HA 020 7936 3668 www.delvapatmanredler.co.uk		The Plaza 100 Old Hall Street Liverpool L3 9QU 0151 242 0980 info@delvapatmanredler.co.uk		

TITLE: PENTAVIA RETAIL PARK  
WATFORD WAY  
LONDON NW7

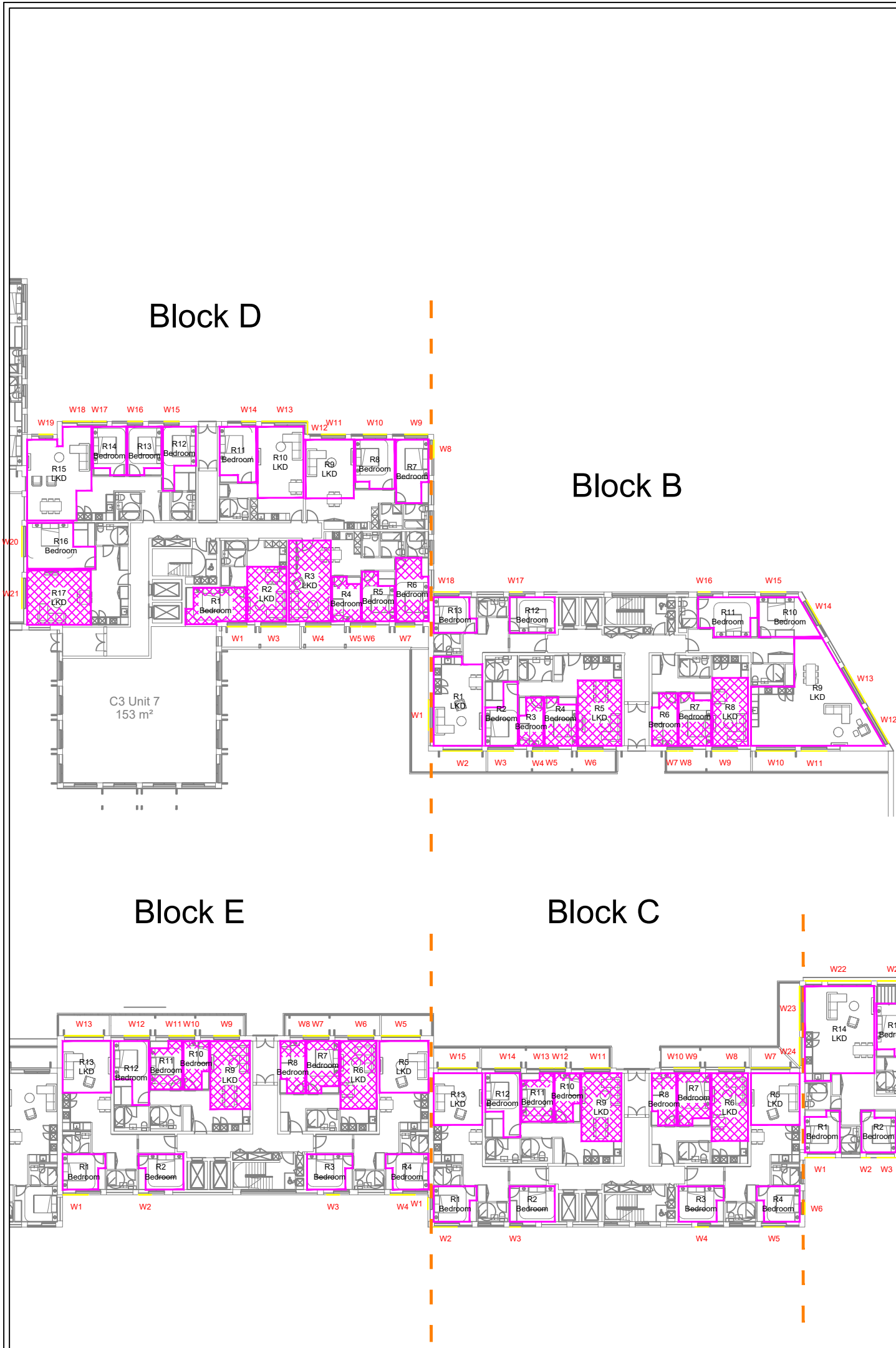
DAYLIGHT / SUNLIGHT ANALYSIS


DRAWING: Pentavia Retail Park  
Daylight / Sunlight Analysis  
Key Window Locations  
-  
-  
-  
Block M, N, O, P, Q & R

DRAWN: MJ	JOB NO:
SCALE: 1:400@A3	16336
DATE: 15/05/2019	
DWG NO: LOC/862	REV: -

Block M, N, O, P, Q & R - Ground Floor Plan






 NO DIMENSIONS TO BE SCALED  
 FROM THIS DRAWING:

■ Floor Plan  
— Room Layouts  
— Unit Layouts

## SOURCE DATA

Drawings Used:  
Existing and surrounding buildings:  
ZMapping:

Proposed Scheme:  
Arney Fender Katsalidis:  
Dwg No's: A\_44032\_MH 3D Model.dwg (3D  
Model received 13.05.2019)  
A\_44032\_MH - A10-00-01 - GA\_LEVEL  
00\_OVERALL PLAN  
A\_44032\_MH - A10-01-01 - GA\_LEVEL  
01\_OVERALL PLAN

## NOTES

Standard Double Glazed Transmittance value of 68% used for ADF assessments.

Cross Hatched Rooms do not comply with BS 8206-2:2008.


EV	Description	Drawn	Ch'kd	Date
----	-------------	-------	-------	------

**DELVA PATMAN REDLER**  
Chartered Surveyors

Delvapatmanredliar  
4 Holborn Circus  
London EC1N 2HA  
020 7936 3668  
www.delvapatmanredliar.co.uk

The Pl  
100 Old Hall Str  
Liverpool L3  
0151 242 0  
info@delvapatmanredliar.co

TITLE: PENTAVIA RETAIL PARK  
WATFORD WAY  
LONDON NW7  
-  
DAYLIGHT / SUNLIGHT ANALYSIS

DRAWING:  
Pentavia Retail Park  
Daylight / Sunlight Analysis  
Key Window Locations  
-  
-  
-  
Block A, B, C, D & E

RAWN: MJ	JOB NO:  16336
CALE: 1:400@A3	
DATE: 15/05/2019	

WG NO:	LOC/864	REV	-
--------	---------	-----	---

## Block A, B, C, D & E - Ground Floor Plan



N

Indicative

NO DIMENSIONS TO BE SCALED  
FROM THIS DRAWING:

Floor Plan

Room Layouts

Unit Layouts

Window Tested  
Daylight only

Window Tested  
Daylight &  
Sunlight

**SOURCE DATA**

Drawings Used:  
Existing and surrounding buildings:  
ZMapping:

Proposed Scheme:  
Arney Fender Katsalidis:  
Dwg No's: A\_44032\_MH 3D Model.dwg (3D  
Model received 13.05.2019)  
A\_44032\_MH - A10-00-01 - GA\_LEVEL  
00\_OVERALL PLAN  
A\_44032\_MH - A10-01-01 - GA\_LEVEL  
01\_OVERALL PLAN

**NOTES**

Standard Double Glazed Transmittance  
value of 68% used for ADF assessments.

Cross Hatched Rooms do not comply with  
BS 8206-2:2008.


REV	Description	Drawn	Ch'kd	Date
DELVA PATMAN REDLER Chartered Surveyors				
Thavies Inn House 3-4 Holborn Circus London EC1N 2HA 020 7936 3668 www.delvapatmanredler.co.uk		The Plaza 100 Old Hall Street Liverpool L3 9QU 0151 242 0980 info@delvapatmanredler.co.uk		

TITLE:

PENTAVIA RETAIL PARK  
WATFORD WAY  
LONDON NW7

DAYLIGHT / SUNLIGHT ANALYSIS

DRAWING:

Pentavia Retail Park  
Daylight / Sunlight Analysis  
Key Window Locations  
-  
-  
-  
Block M, N, O, P, Q & R

DRAWN: MJ

SCALE: 1:400@A3

DATE: 15/05/2019

JOB NO:

16336

DWG NO:

LOC/865

REV:

-

Block M, N, O, P, Q & R - First Floor Plan



Block F, G, H, I, J, K & L - First Floor Plan

Floor Plan

Room Layouts

Unit Layouts

Window Tested Daylight only

Window Tested Daylight & Sunlight

SOURCE DATA

Drawings Used:  
Existing and surrounding buildings:  
ZMapping:  
  
Proposed Scheme:  
Arney Fender Katsalidis:  
Dwg No's: A\_44032\_MH 3D Model.dwg (3D Model received 13.05.2019)  
A\_44032\_MH - A10-00-01 - GA\_LEVEL 00\_OVERALL PLAN  
A\_44032\_MH - A10-01-01 - GA\_LEVEL 01\_OVERALL PLAN

NOTES

Standard Double Glazed Transmittance value of 68% used for ADF assessments.  
  
Cross Hatched Rooms do not comply with BS 8206-2:2008.

REV	Description	Drawn	Ch'kd	Date

DELVA PATMAN REDLER

Chartered Surveyors

Thavies Inn House

3-4 Holborn Circus

London EC1N 2HA

020 7936 3668

www.delvapatmanredler.co.uk

The Plaza

100 Old Hall Street

Liverpool L3 9QU

0151 242 0980

info@delvapatmanredler.co.uk

TITLE:

PENTAVIA RETAIL PARK  
WATFORD WAY  
LONDON NW7

DAYLIGHT / SUNLIGHT ANALYSIS

DRAWING:

Pentavia Retail Park  
Daylight / Sunlight Analysis  
Key Window Locations

Block F, G, H, I, J, K & L

DRAWN: MJ

SCALE: 1:400@A3

DATE: 15/05/2019

DWG NO:

JOB NO:

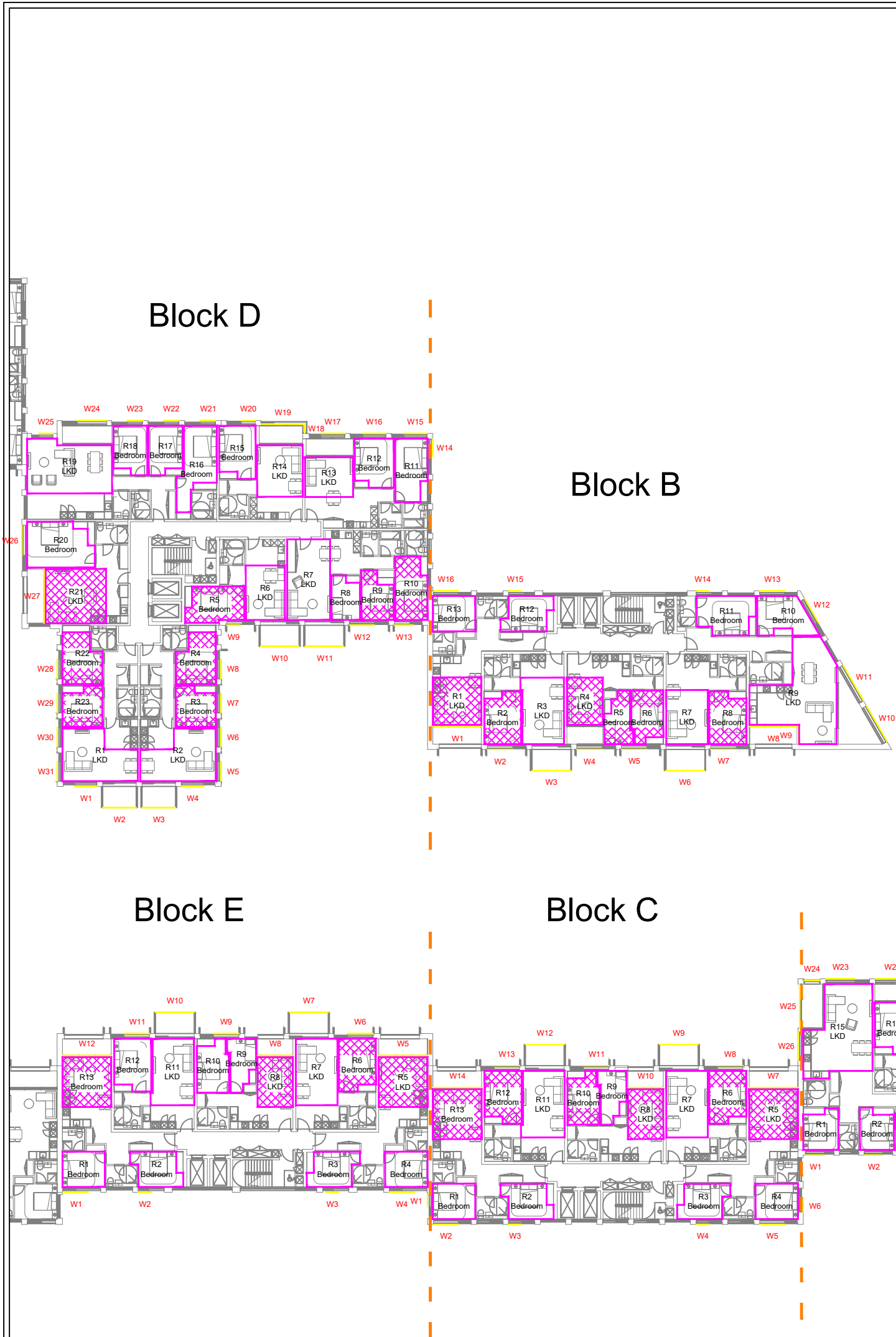
16336

REV:

-

LOC/866





NO DIMENSIONS TO BE SCALED  
FROM THIS DRAWING:

■ Floor Plan  
— Room Layouts  
— Unit Layouts

## SOURCE DATA

Drawings Used:  
Existing and surrounding buildings:  
ZMapping:  
  
Proposed Scheme:  
Arney Fender Katsalidis:  
Dwg No's: A\_44032\_MH 3D Model.dwg (3D  
Model received 13.05.2019)  
A\_44032\_MH - A10-00-01 - GA\_LEVEL  
00\_OVERALL PLAN  
A\_44032\_MH - A10-01-01 - GA\_LEVEL  
01\_OVERALL PLAN

## NOTES

Standard Double Glazed Transmittance value of 68% used for ADF assessments.

Cross Hatched Rooms do not comply with BS 8206-2:2008.

CV	Description	Drawn	Ch'kd	Date

EV	Description	Drawn	Ch'kd	Date
----	-------------	-------	-------	------

**DELVA PATMAN REDLER**  
Chartered Surveyors

Delvapatmanredliar  
4 Holborn Circus  
London EC1N 2HA  
020 7936 3668  
www.delvapatmanredliar.co.uk

The Pl  
100 Old Hall Str  
Liverpool L3  
0151 242 0  
info@delvapatmanredliar.co

TITLE: PENTAVIA RETAIL PARK  
WATFORD WAY  
LONDON NW7  
-  
DAYLIGHT / SUNLIGHT ANALYSIS

DRAWING:  
Pentavia Retail Park  
Daylight / Sunlight Analysis  
Key Window Locations  
-  
-  
-  
Block A, B, C, D & E

RAWN: MJ	JOB NO:  16336
CALE: 1:400@A3	
DATE: 15/05/2019	

WG NO: LOC/867

## Block A, B, C, D & E - First Floor Plan

Dwg No	Address	Floor Level	Room Name	Window ID	ADF (Room) %age	Pass Rate %age	Condition
-	Block A	Ground	Bedroom/R1	W1	4.67%	1.00%	Pass
-			Bedroom/R2	W2	5.71%	1.00%	Pass
-				W3			
-			Bedroom/R3	W4	5.71%	1.00%	Pass
-			Bedroom/R4	W5	7.08%	1.00%	Pass
-				W6			
-			Bedroom/R5	W7	17.04%	1.00%	Pass
-				W8			
-				W9			
-			Bedroom/R6	W8	18.70%	1.00%	Pass
-				W9			
-				W10			
-			LKD/R7	W11	11.18%	1.50%	Pass
-				W12			
-				W13			
-				W14			
-			Bedroom/R8	W15	4.75%	1.00%	Pass
-			LKD/R9	W16	4.69%	1.50%	Pass
-			Bedroom/R10	W17	3.17%	1.00%	Pass
-			Bedroom/R11	W18	5.06%	1.00%	Pass
-				W19			
-			LKD/R12	W20	3.91%	1.50%	Pass
-			Bedroom/R13	W21	4.32%	1.00%	Pass
-			LKD/R14	W22	5.33%	1.50%	Pass
-				W23			
-				W24			
-			Bedroom/R15	W25	5.19%	1.00%	Pass
-		First	Bedroom/R1	W1	2.09%	1.00%	Pass
-			Bedroom/R2	W2	2.82%	1.00%	Pass
-			Bedroom/R3	W3	3.58%	1.00%	Pass
-			Bedroom/R4	W4	4.36%	1.00%	Pass
-				W5			
-			Bedroom/R5	W9	18.65%	1.00%	Pass
-				W10			
-				W11			
-			Bedroom/R6	W12	2.88%	1.00%	Pass
-			LKD/R7	W13	8.68%	1.50%	Pass
-				W14			
-				W15			
-				W16			
-			Bedroom/R8	W17	4.90%	1.00%	Pass
-			LKD/R9	W18	5.18%	1.50%	Pass
-			Bedroom/R10	W19	7.48%	1.00%	Pass
-			Bedroom/R11	W19	12.56%	1.00%	Pass
-				W20			
-			LKD/R12	W20	4.51%	1.50%	Pass
-			LKD/R13	W21	4.28%	1.50%	Pass
-			Bedroom/R14	W22	3.69%	1.00%	Pass
-			LKD/R15	W23	4.45%	1.50%	Pass
-				W24			
-				W25			
-				W26			

Dwg No	Address	Floor Level	Room Name	Window ID	ADF (Room) %age	Pass Rate %age	Condition
-	Block B	Ground	LKD/R1	W1	2.38%	1.50%	Pass
-				W2			
-			Bedroom/R2	W3	1.49%	1.00%	Pass
-			Bedroom/R3	W4	0.01%	1.00%	Fail
-			Bedroom/R4	W5	0.01%	1.00%	Fail
-			LKD/R5	W6	0.91%	1.50%	Fail
-			Bedroom/R6	W7	0.03%	1.00%	Fail
-			Bedroom/R7	W8	0.04%	1.00%	Fail
-			LKD/R8	W9	0.95%	1.50%	Fail
-			LKD/R9	W10	4.77%	1.50%	Pass
-				W11			
-				W12			
-				W13			
-			Bedroom/R10	W14	5.57%	1.00%	Pass
-				W15			
-			Bedroom/R11	W16	1.15%	1.00%	Pass
-			Bedroom/R12	W17	1.24%	1.00%	Pass
-			Bedroom/R13	W18	2.21%	1.00%	Pass
-		First	LKD/R1	W1	0.03%	1.50%	Fail
-			Bedroom/R2	W2	0.71%	1.00%	Fail
-			LKD/R3	W3	2.09%	1.50%	Pass
-			LKD/R4	W4	0.60%	1.50%	Fail
-			Bedroom/R5	W5	0.62%	1.00%	Fail
-			Bedroom/R6	W5	0.56%	1.00%	Fail
-			LKD/R7	W6	2.15%	1.50%	Pass
-			Bedroom/R8	W7	0.38%	1.00%	Fail
-			LKD/R9	W8	4.72%	1.50%	Pass
-				W9			
-				W10			
-				W11			
-			Bedroom/R10	W12	5.49%	1.00%	Pass
-				W13			
-			Bedroom/R11	W14	1.28%	1.00%	Pass
-			Bedroom/R12	W15	1.25%	1.00%	Pass
-			Bedroom/R13	W16	2.15%	1.00%	Pass
-		Ground	Bedroom/R1	W1	4.23%	1.00%	Pass
-				W2			
-			Bedroom/R2	W3	1.35%	1.00%	Pass
-			Bedroom/R3	W4	1.71%	1.00%	Pass
-			Bedroom/R4	W5	3.89%	1.00%	Pass
-				W6			
-			LKD/R5	W7	1.68%	1.50%	Pass
-			LKD/R6	W8	1.26%	1.50%	Fail
-			Bedroom/R7	W9	0.61%	1.00%	Fail
-			Bedroom/R8	W10	0.00%	1.00%	Fail
-			LKD/R9	W11	1.29%	1.50%	Fail
-			Bedroom/R10	W12	0.04%	1.00%	Fail
-			Bedroom/R11	W13	0.29%	1.00%	Fail
-			Bedroom/R12	W14	1.45%	1.00%	Pass
-			LKD/R13	W15	2.08%	1.50%	Pass
-		First	Bedroom/R1	W1	4.33%	1.00%	Pass
-				W2			

Red Text Cells do not meet the BRE recommendations  
Positive %age figures indicate an improvement  
in the natural lighting conditions

Dwg No	Address	Floor Level	Room Name	Window ID	ADF (Room) %age	Pass Rate %age	Condition
-	Block C	First	Bedroom/R2	W3	1.58%	1.00%	Pass
-			Bedroom/R3	W4	1.57%	1.00%	Pass
-			Bedroom/R4	W5	4.44%	1.00%	Pass
-				W6			
-			LKD/R5	W7	0.06%	1.50%	Fail
-			Bedroom/R6	W8	0.82%	1.00%	Fail
-			LKD/R7	W9	2.27%	1.50%	Pass
-			LKD/R8	W10	0.01%	1.50%	Fail
-			Bedroom/R9	W11	1.06%	1.00%	Pass
-			Bedroom/R10	W11	0.96%	1.00%	Fail
-			LKD/R11	W12	2.28%	1.50%	Pass
-			Bedroom/R12	W13	0.72%	1.00%	Fail
-			Bedroom/R13	W14	0.05%	1.00%	Fail
-	Block D	Ground	Bedroom/R1	W1	0.95%	1.00%	Fail
-			LKD/R2	W3	0.05%	1.50%	Fail
-			LKD/R3	W4	0.04%	1.50%	Fail
-			Bedroom/R4	W5	0.75%	1.00%	Fail
-			Bedroom/R5	W6	0.93%	1.00%	Fail
-			Bedroom/R6	W7	0.98%	1.00%	Fail
-			Bedroom/R7	W8	4.15%	1.00%	Pass
-				W9			
-			Bedroom/R8	W10	2.87%	1.00%	Pass
-			LKD/R9	W11	2.52%	1.50%	Pass
-			LKD/R10	W12	5.18%	1.50%	Pass
-				W13			
-			Bedroom/R11	W14	1.87%	1.00%	Pass
-			Bedroom/R12	W15	1.56%	1.00%	Pass
-			Bedroom/R13	W16	1.62%	1.00%	Pass
-			Bedroom/R14	W17	1.76%	1.00%	Pass
-			LKD/R15	W18	1.79%	1.50%	Pass
-				W19			
-			Bedroom/R16	W20	1.23%	1.00%	Pass
-			LKD/R17	W21	1.23%	1.50%	Fail
-		First	LKD/R1	W1	3.08%	1.50%	Pass
-				W2			
-				W30			
-				W31			
-			LKD/R2	W3	2.37%	1.50%	Pass
-				W4			
-				W5			
-				W6			
-			Bedroom/R3	W7	0.37%	1.00%	Fail
-			Bedroom/R4	W8	0.14%	1.00%	Fail
-			Bedroom/R5	W9	0.49%	1.00%	Fail
-			LKD/R6	W10	2.25%	1.50%	Pass
-			LKD/R7	W11	1.61%	1.50%	Pass
-			Bedroom/R8	W12	1.07%	1.00%	Pass
-			Bedroom/R9	W12	0.94%	1.00%	Fail
-			Bedroom/R10	W13	0.53%	1.00%	Fail
-			Bedroom/R11	W14	4.18%	1.00%	Pass
-				W15			
-			Bedroom/R12	W16	2.89%	1.00%	Pass

Dwg No	Address	Floor Level	Room Name	Window ID	ADF (Room) %age	Pass Rate %age	Condition
-	Block D	First	LKD/R13	W17	3.36%	1.50%	Pass
-			LKD/R14	W18	5.76%	1.50%	Pass
-				W19			
-			Bedroom/R15	W20	1.97%	1.00%	Pass
-			Bedroom/R16	W21	1.20%	1.00%	Pass
-			Bedroom/R17	W22	1.74%	1.00%	Pass
-			Bedroom/R18	W23	1.64%	1.00%	Pass
-			LKD/R19	W24	2.28%	1.50%	Pass
-				W25			
-			Bedroom/R20	W26	1.23%	1.00%	Pass
-			LKD/R21	W27	0.31%	1.50%	Fail
-			Bedroom/R22	W28	0.74%	1.00%	Fail
-			Bedroom/R23	W29	0.90%	1.00%	Fail
-	Block E	Ground	Bedroom/R1	W1	2.59%	1.00%	Pass
-			Bedroom/R2	W2	1.71%	1.00%	Pass
-			Bedroom/R3	W3	1.69%	1.00%	Pass
-			Bedroom/R4	W4	2.93%	1.00%	Pass
-			LKD/R5	W5	2.22%	1.50%	Pass
-			LKD/R6	W6	1.27%	1.50%	Fail
-			Bedroom/R7	W7	0.11%	1.00%	Fail
-			Bedroom/R8	W8	0.00%	1.00%	Fail
-			LKD/R9	W9	1.26%	1.50%	Fail
-			Bedroom/R10	W10	0.06%	1.00%	Fail
-			Bedroom/R11	W11	0.10%	1.00%	Fail
-			Bedroom/R12	W12	1.59%	1.00%	Pass
-			LKD/R13	W13	2.42%	1.50%	Pass
-		First	Bedroom/R1	W1	2.50%	1.00%	Pass
-			Bedroom/R2	W2	1.56%	1.00%	Pass
-			Bedroom/R3	W3	1.56%	1.00%	Pass
-			Bedroom/R4	W4	2.84%	1.00%	Pass
-			LKD/R5	W5	0.06%	1.50%	Fail
-			Bedroom/R6	W6	0.92%	1.00%	Fail
-			LKD/R7	W7	2.29%	1.50%	Pass
-			LKD/R8	W8	0.06%	1.50%	Fail
-			Bedroom/R9	W9	1.26%	1.00%	Pass
-			Bedroom/R10	W9	1.13%	1.00%	Pass
-			LKD/R11	W10	2.27%	1.50%	Pass
-			Bedroom/R12	W11	1.16%	1.00%	Pass
-			Bedroom/R13	W12	0.24%	1.00%	Fail
-	Block F	Ground	Bedroom/R1	W1	0.96%	1.00%	Fail
-			LKD/R2	W3	0.05%	1.50%	Fail
-			LKD/R3	W4	0.04%	1.50%	Fail
-			Bedroom/R4	W5	0.74%	1.00%	Fail
-			Bedroom/R5	W6	0.97%	1.00%	Fail
-			Bedroom/R6	W7	1.04%	1.00%	Pass
-			Bedroom/R7	W8	4.15%	1.00%	Pass
-				W9			
-			Bedroom/R8	W10	2.85%	1.00%	Pass
-			LKD/R9	W11	2.51%	1.50%	Pass
-			LKD/R10	W12	5.19%	1.50%	Pass
-				W13			
-			Bedroom/R11	W14	1.88%	1.00%	Pass

Red Text Cells do not meet the BRE recommendations  
Positive %age figures indicate an improvement  
in the natural lighting conditions

Dwg No	Address	Floor Level	Room Name	Window ID	ADF (Room) %age	Pass Rate %age	Condition
-	Block F	Ground	Bedroom/R12	W15	1.57%	1.00%	Pass
-			Bedroom/R13	W16	1.69%	1.00%	Pass
-			Bedroom/R14	W17	1.92%	1.00%	Pass
-			LKD/R15	W18	1.82%	1.50%	Pass
-				W19			
-			Bedroom/R16	W20	1.19%	1.00%	Pass
-			LKD/R17	W21	1.32%	1.50%	Fail
-		First	LKD/R1	W1	3.36%	1.50%	Pass
-				W2			
-				W30			
-				W31			
-			LKD/R2	W3	2.82%	1.50%	Pass
-				W4			
-				W5			
-				W6			
-			Bedroom/R3	W7	0.11%	1.00%	Fail
-			Bedroom/R4	W8	0.04%	1.00%	Fail
-			Bedroom/R5	W9	0.48%	1.00%	Fail
-			LKD/R6	W10	2.15%	1.50%	Pass
-			LKD/R7	W11	1.57%	1.50%	Pass
-			Bedroom/R8	W12	1.15%	1.00%	Pass
-			Bedroom/R9	W12	1.00%	1.00%	Pass
-			Bedroom/R10	W13	0.59%	1.00%	Fail
-			Bedroom/R11	W14	4.19%	1.00%	Pass
-				W15			
-			Bedroom/R12	W16	2.89%	1.00%	Pass
-			LKD/R13	W17	3.36%	1.50%	Pass
-			LKD/R14	W18	5.77%	1.50%	Pass
-				W19			
-			Bedroom/R15	W20	1.98%	1.00%	Pass
-			Bedroom/R16	W21	1.21%	1.00%	Pass
-			Bedroom/R17	W22	1.77%	1.00%	Pass
-			Bedroom/R18	W23	1.68%	1.00%	Pass
-			LKD/R19	W24	2.31%	1.50%	Pass
-				W25			
-			Bedroom/R20	W26	1.32%	1.00%	Pass
-			LKD/R21	W27	0.59%	1.50%	Fail
-			Bedroom/R22	W28	0.83%	1.00%	Fail
-			Bedroom/R23	W29	1.03%	1.00%	Pass
-	Block G	Ground	Bedroom/R1	W1	1.44%	1.00%	Pass
-			Bedroom/R2	W2	2.50%	1.00%	Pass
-			LKD/R3	W3	2.19%	1.50%	Pass
-			Bedroom/R4	W4	0.79%	1.00%	Fail
-			LKD/R5	W5	0.79%	1.50%	Fail
-			Bedroom/R6	W6	0.39%	1.00%	Fail
-			LKD/R7	W7	0.72%	1.50%	Fail
-		First	Bedroom/R1	W1	2.19%	1.00%	Pass
-			Bedroom/R2	W2	2.42%	1.00%	Pass
-			LKD/R3	W3	0.32%	1.50%	Fail
-			Bedroom/R4	W4	0.41%	1.00%	Fail
-			Bedroom/R5	W5	0.66%	1.00%	Fail
-			LKD/R6	W6	1.66%	1.50%	Pass

Dwg No	Address	Floor Level	Room Name	Window ID	ADF (Room) %age	Pass Rate %age	Condition
-	Block G	First	LKD/R7	W7	0.23%	1.50%	Fail
-			Bedroom/R8	W8	0.67%	1.00%	Fail
-			Bedroom/R9	W9	0.72%	1.00%	Fail
-			Bedroom/R1	W1	1.07%	1.00%	Pass
-	Block H	Ground	LKD/R2	W3	0.43%	1.50%	Fail
-			LKD/R3	W4	0.31%	1.50%	Fail
-			Bedroom/R4	W5	0.98%	1.00%	Fail
-			Bedroom/R5	W6	1.14%	1.00%	Pass
-			Bedroom/R6	W7	1.18%	1.00%	Pass
-			Bedroom/R7	W8	4.11%	1.00%	Pass
-				W9			
-			Bedroom/R8	W10	2.86%	1.00%	Pass
-			LKD/R9	W11	2.49%	1.50%	Pass
-			LKD/R10	W12	5.22%	1.50%	Pass
-				W13			
-			Bedroom/R11	W14	1.90%	1.00%	Pass
-		First	LKD/R1	W1	3.19%	1.50%	Pass
-				W2			
-				W30			
-			LKD/R2	W3	3.39%	1.50%	Pass
-				W4			
-				W5			
-				W6			
-			Bedroom/R3	W7	0.13%	1.00%	Fail
-			Bedroom/R4	W8	0.05%	1.00%	Fail
-			Bedroom/R5	W9	0.62%	1.00%	Fail
-			LKD/R6	W10	2.47%	1.50%	Pass
-			LKD/R7	W11	1.79%	1.50%	Pass
-			Bedroom/R8	W12	1.40%	1.00%	Pass
-			Bedroom/R9	W12	1.22%	1.00%	Pass
-			Bedroom/R10	W13	0.74%	1.00%	Fail
-			Bedroom/R11	W14	4.16%	1.00%	Pass
-				W15			
-			Bedroom/R12	W16	2.89%	1.00%	Pass
-			LKD/R13	W17	3.36%	1.50%	Pass
-			LKD/R14	W18	5.78%	1.50%	Pass
-				W19			
-			Bedroom/R15	W20	1.99%	1.00%	Pass
-			Bedroom/R16	W21	1.22%	1.00%	Pass
-			Bedroom/R17	W22	1.81%	1.00%	Pass
-			Bedroom/R18	W23	1.74%	1.00%	Pass
-	Block I	Ground	LKD/R19	W24	2.40%	1.50%	Pass
-				W25			
-			Bedroom/R20	W26	1.53%	1.00%	Pass
-			LKD/R21	W27	0.28%	1.50%	Fail
-			Bedroom/R22	W28	0.98%	1.00%	Fail
-			Bedroom/R23	W29	1.16%	1.00%	Pass
-			Bedroom/R1	W1	2.43%	1.00%	Pass
-	Block I	Ground	Bedroom/R2	W2	2.68%	1.00%	Pass
-			LKD/R3	W3	1.54%	1.50%	Pass
-				W4			
-	Block I	Ground	LKD/R3	W5	1.54%	1.50%	Pass
-				W4			
-				W5			

Red Text Cells do not meet the BRE recommendations  
Positive %age figures indicate an improvement  
in the natural lighting conditions

Dwg No	Address	Floor Level	Room Name	Window ID	ADF (Room) %age	Pass Rate %age	Condition
-	Block I	Ground	LKD/R4	W6	1.37%	1.50%	Fail
-				W7			
-			Bedroom/R5	W8	3.66%	1.00%	Pass
-				W9			
-				W10			
-				W11			
-			LKD/R6	W12	1.69%	1.50%	Pass
-				W13			
-				W14			
-			Bedroom/R7	W15	0.50%	1.00%	Fail
-		First	Bedroom/R1	W1	2.49%	1.00%	Pass
-			Bedroom/R2	W2	2.67%	1.00%	Pass
-			LKD/R3	W3	1.16%	1.50%	Fail
-				W5			
-				W6			
-			Bedroom/R4	W7	1.41%	1.00%	Pass
-			Bedroom/R5	W8	0.97%	1.00%	Fail
-			LKD/R6	W9	2.66%	1.50%	Pass
-				W10			
-				W11			
-			LKD/R7	W12	3.48%	1.50%	Pass
-				W13			
-				W14			
-			Bedroom/R8	W15	0.49%	1.00%	Fail
-	Block J	Ground	LKD/R1	W1	1.31%	1.50%	Fail
-				W27			
-				W28			
-			Bedroom/R2	W2	1.61%	1.00%	Pass
-			Bedroom/R3	W3	1.52%	1.00%	Pass
-			Bedroom/R4	W4	2.03%	1.00%	Pass
-			Bedroom/R5	W5	1.75%	1.00%	Pass
-			Bedroom/R6	W6	2.27%	1.00%	Pass
-			Bedroom/R7	W7	2.27%	1.00%	Pass
-			Bedroom/R8	W8	1.41%	1.00%	Pass
-			Bedroom/R9	W9	1.31%	1.00%	Pass
-			LKD/R10	W11	0.79%	1.50%	Fail
-				W12			
-			LKD/R11	W13	2.42%	1.50%	Pass
-			Bedroom/R12	W14	1.86%	1.00%	Pass
-			LKD/R13	W16	0.19%	1.50%	Fail
-			Bedroom/R14	W17	0.75%	1.00%	Fail
-			Bedroom/R15	W18	1.27%	1.00%	Pass
-			LKD/R16	W19	2.43%	1.50%	Pass
-				W20			
-				W21			
-			Bedroom/R17	W22	4.55%	1.00%	Pass
-				W23			
-				W24			
-			LKD/R18	W25	1.64%	1.50%	Pass
-				W26			

Dwg No	Address	Floor Level	Room Name	Window ID	ADF (Room) %age	Pass Rate %age	Condition
-	Block J	First	LKD/R1	W1	0.73%	1.50%	Fail
-				W25			
-				W26			
-			Bedroom/R2	W2	3.03%	1.00%	Pass
-			Bedroom/R3	W2	3.87%	1.00%	Pass
-			Bedroom/R4	W3	2.02%	1.00%	Pass
-			Bedroom/R5	W4	1.78%	1.00%	Pass
-			Bedroom/R6	W5	2.24%	1.00%	Pass
-			Bedroom/R7	W6	2.13%	1.00%	Pass
-			Bedroom/R8	W7	1.42%	1.00%	Pass
-			Bedroom/R9	W8	1.31%	1.00%	Pass
-			LKD/R10	W10	1.76%	1.50%	Pass
-				W11			
-			LKD/R11	W12	1.07%	1.50%	Fail
-			Bedroom/R12	W13	1.23%	1.00%	Pass
-			LKD/R13	W14	2.14%	1.50%	Pass
-			Bedroom/R14	W15	0.58%	1.00%	Fail
-			Bedroom/R15	W16	0.97%	1.00%	Fail
-			LKD/R16	W17	3.22%	1.50%	Pass
-				W18			
-				W19			
-			LKD/R17	W20	4.30%	1.50%	Pass
-				W21			
-				W22			
-			Bedroom/R18	W23	1.21%	1.00%	Pass
-			Bedroom/R19	W24	1.27%	1.00%	Pass
-	Block K	First	LKD/R1	W1	0.39%	1.50%	Fail
-			Bedroom/R2	W2	3.99%	1.00%	Pass
-			LKD/R3	W3	3.34%	1.50%	Pass
-			LKD/R4	W4	0.60%	1.50%	Fail
-			Bedroom/R5	W5	0.44%	1.00%	Fail
-			Bedroom/R6	W5	0.40%	1.00%	Fail
-			LKD/R7	W6	3.31%	1.50%	Pass
-			Bedroom/R8	W7	1.27%	1.00%	Pass
-			LKD/R9	W8	0.50%	1.50%	Fail
-			Bedroom/R10	W9	10.00%	1.00%	Pass
-				W10			
-			Bedroom/R11	W11	11.79%	1.00%	Pass
-				W12			
-				W13			
-			Bedroom/R12	W14	11.78%	1.00%	Pass
-				W15			
-				W16			
-			Bedroom/R13	W17	9.87%	1.00%	Pass
-				W18			
-	Block L	Ground	Bedroom/R1	W1	12.65%	1.00%	Pass
-				W2			
-			Bedroom/R2	W3	4.09%	1.00%	Pass
-			Bedroom/R3	W4	4.10%	1.00%	Pass
-			Bedroom/R4	W5	12.38%	1.00%	Pass
-				W6			
-			LKD/R5	W7	3.04%	1.50%	Pass

Red Text Cells do not meet the BRE recommendations  
Positive %age figures indicate an improvement  
in the natural lighting conditions



Dwg No	Address	Floor Level	Room Name	Window ID	ADF (Room) %age	Pass Rate %age	Condition
-	Block L	Ground	LKD/R6	W8	2.89%	1.50%	Pass
-			Bedroom/R7	W9	0.83%	1.00%	Fail
-			Bedroom/R8	W10	0.82%	1.00%	Fail
-			LKD/R9	W11	2.84%	1.50%	Pass
-			Bedroom/R10	W12	1.71%	1.00%	Pass
-				W13			
-			Bedroom/R11	W14	0.71%	1.00%	Fail
-			Bedroom/R12	W15	3.51%	1.00%	Pass
-			LKD/R13	W16	3.21%	1.50%	Pass
-							
-		First	Bedroom/R1	W1	10.24%	1.00%	Pass
-				W2			
-			Bedroom/R2	W3	11.83%	1.00%	Pass
-				W4			
-				W5			
-			Bedroom/R3	W6	11.83%	1.00%	Pass
-				W7			
-			Bedroom/R4	W8	9.44%	1.00%	Pass
-				W9			
-			LKD/R5	W10	0.87%	1.50%	Fail
-				W11			
-			Bedroom/R6	W12	1.73%	1.00%	Pass
-			LKD/R7	W13	3.62%	1.50%	Pass
-			Bedroom/R8	W14	0.73%	1.00%	Fail
-			Bedroom/R9	W14	0.82%	1.00%	Fail
-			LKD/R10	W15	1.14%	1.50%	Fail
-			LKD/R11	W16	3.56%	1.50%	Pass
-			Bedroom/R12	W17	4.16%	1.00%	Pass
-			LKD/R13	W18	0.85%	1.50%	Fail
-	Block M	Ground	Bedroom/R1	W1	1.33%	1.00%	Pass
-			LKD/R2	W2	0.27%	1.50%	Fail
-			LKD/R3	W3	1.61%	1.50%	Pass
-			Bedroom/R4	W4	2.63%	1.00%	Pass
-			LKD/R5	W5	0.38%	1.50%	Fail
-			Bedroom/R6	W6	0.90%	1.00%	Fail
-			Bedroom/R7	W7	2.21%	1.00%	Pass
-			LKD/R8	W8	5.61%	1.50%	Pass
-				W9			
-			LKD/R9	W10	2.85%	1.50%	Pass
-			Bedroom/R10	W11	1.88%	1.00%	Pass
-			Bedroom/R11	W12	1.88%	1.00%	Pass
-			Bedroom/R12	W13	3.57%	1.00%	Pass
-				W14			
-				W15			
-			Bedroom/R13	W16	1.12%	1.00%	Pass
-		First	Bedroom/R1	W1	1.15%	1.00%	Pass
-			LKD/R2	W2	3.31%	1.50%	Pass
-			Bedroom/R3	W3	1.08%	1.00%	Pass
-			LKD/R4	W4	1.83%	1.50%	Pass
-			LKD/R5	W5	3.54%	1.50%	Pass
-			Bedroom/R6	W6	1.02%	1.00%	Pass
-			Bedroom/R7	W7	0.62%	1.00%	Fail
-			Bedroom/R8	W8	0.85%	1.00%	Fail

Dwg No	Address	Floor Level	Room Name	Window ID	ADF (Room) %age	Pass Rate %age	Condition
-	Block M	First	LKD/R9	W9	3.75%	1.50%	Pass
-				W10			
-				W11			
-				W12			
-			LKD/R10	W13	4.46%	1.50%	Pass
-				W14			
-				W15			
-				W16			
-			Bedroom/R11	W17	1.30%	1.00%	Pass
-			Bedroom/R12	W18	0.83%	1.00%	Fail
-			Bedroom/R13	W19	1.52%	1.00%	Pass
-			LKD/R14	W20	4.36%	1.50%	Pass
-				W21			
-			LKD/R15	W22	3.08%	1.50%	Pass
-			Bedroom/R16	W23	1.90%	1.00%	Pass
-			Bedroom/R17	W24	1.90%	1.00%	Pass
-			Bedroom/R18	W25	3.63%	1.00%	Pass
-				W26			
-				W27			
-			Bedroom/R19	W28	1.07%	1.00%	Pass
-		Ground	Bedroom/R1	W1	2.57%	1.00%	Pass
-			Bedroom/R2	W2	1.82%	1.00%	Pass
-			Bedroom/R3	W3	1.95%	1.00%	Pass
-			LKD/R4	W4	1.10%	1.50%	Fail
-				W5			
-				W16			
-			LKD/R5	W6	1.63%	1.50%	Pass
-				W7			
-			Bedroom/R6	W8	4.24%	1.00%	Pass
-				W9			
-			LKD/R7	W10	2.80%	1.50%	Pass
-				W11			
-				W12			
-			Bedroom/R8	W13	1.59%	1.00%	Pass
-				W14			
-			Bedroom/R9	W15	0.47%	1.00%	Fail
-	Block N	First	Bedroom/R1	W1	2.01%	1.00%	Pass
-			Bedroom/R2	W2	3.72%	1.00%	Pass
-			Bedroom/R3	W2	2.98%	1.00%	Pass
-			LKD/R4	W3	0.47%	1.50%	Fail
-				W4			
-				W5			
-			Bedroom/R5	W6	1.15%	1.00%	Pass
-			Bedroom/R6	W7	1.06%	1.00%	Pass
-			LKD/R7	W8	4.26%	1.50%	Pass
-				W9			
-				W10			
-			LKD/R8	W11	3.70%	1.50%	Pass
-				W12			
-				W13			
-			Bedroom/R9	W14	1.21%	1.00%	Pass
-			Bedroom/R10	W15	0.85%	1.00%	Fail

Red Text Cells do not meet the BRE recommendations  
Positive %age figures indicate an improvement  
in the natural lighting conditions

Dwg No	Address	Floor Level	Room Name	Window ID	ADF (Room) %age	Pass Rate %age	Condition
-	Block O	Ground	LKD/R1	W1	2.13%	1.50%	Pass
-				W25			
-				W26			
-			Bedroom/R2	W2	2.72%	1.00%	Pass
-			Bedroom/R3	W3	2.46%	1.00%	Pass
-			Bedroom/R4	W4	1.45%	1.00%	Pass
-			Bedroom/R5	W5	1.55%	1.00%	Pass
-			Bedroom/R6	W6	2.48%	1.00%	Pass
-			Bedroom/R7	W7	2.49%	1.00%	Pass
-			Bedroom/R8	W8	1.83%	1.00%	Pass
-			LKD/R9	W10	0.33%	1.50%	Fail
-			Bedroom/R10	W12	2.08%	1.00%	Pass
-			LKD/R11	W13	2.65%	1.50%	Pass
-			LKD/R12	W14	0.89%	1.50%	Fail
-				W15			
-			Bedroom/R13	W16	0.52%	1.00%	Fail
-			LKD/R14	W17	1.34%	1.50%	Fail
-				W18			
-				W19			
-			Bedroom/R15	W20	4.34%	1.00%	Pass
-				W21			
-				W22			
-			LKD/R16	W23	1.64%	1.50%	Pass
-				W24			
-		First	LKD/R1	W1	1.84%	1.50%	Pass
-				W24			
-				W25			
-			Bedroom/R2	W2	2.58%	1.00%	Pass
-			Bedroom/R3	W3	2.46%	1.00%	Pass
-			Bedroom/R4	W4	1.24%	1.00%	Pass
-			Bedroom/R5	W5	1.35%	1.00%	Pass
-			Bedroom/R6	W6	2.04%	1.00%	Pass
-			Bedroom/R7	W7	2.12%	1.00%	Pass
-			Bedroom/R8	W8	1.62%	1.00%	Pass
-			Bedroom/R9	W10	3.94%	1.00%	Pass
-			LKD/R10	W10	3.99%	1.50%	Pass
-				W11			
-			LKD/R11	W12	1.42%	1.50%	Fail
-			LKD/R12	W13	1.90%	1.50%	Pass
-				W14			
-			Bedroom/R13	W15	0.52%	1.00%	Fail
-			LKD/R14	W16	4.04%	1.50%	Pass
-				W17			
-				W18			
-			LKD/R15	W19	3.90%	1.50%	Pass
-				W20			
-				W21			
-			Bedroom/R16	W22	1.34%	1.00%	Pass
-			Bedroom/R17	W23	1.93%	1.00%	Pass
-	Block P	Ground	LKD/R1	W1	1.76%	1.50%	Pass
-				W2			
-			Bedroom/R2	W3	2.54%	1.00%	Pass

Dwg No	Address	Floor Level	Room Name	Window ID	ADF (Room) %age	Pass Rate %age	Condition
-	Block P	Ground	Bedroom/R3	W4	1.99%	1.00%	Pass
-			LKD/R4	W5	3.33%	1.50%	Pass
-				W6			
-				W7			
-			Bedroom/R5	W8	2.38%	1.00%	Pass
-		First	LKD/R1	W1	9.01%	1.50%	Pass
-				W2			
-				W28			
-				W29	2.55%	1.00%	Pass
-			Bedroom/R2	W3			
-			LKD/R3	W4	3.98%	1.50%	Pass
-				W5			
-			Bedroom/R4	W6	3.74%	1.00%	Pass
-				W7			
-			Bedroom/R5	W8	3.94%	1.00%	Pass
-			LKD/R6	W9	2.39%	1.50%	Pass
-				W10			
-				W11			
-				W12			
-			Bedroom/R7	W13	1.06%	1.00%	Pass
-				W14			
-				W15			
-			Bedroom/R8	W16	2.44%	1.00%	Pass
-			Bedroom/R9	W17	2.03%	1.00%	Pass
-			LKD/R10	W18	10.37%	1.50%	Pass
-				W19			
-				W20			
-				W21			
-				W22			
-			Bedroom/R11	W23	2.95%	1.00%	Pass
-			Bedroom/R12	W24	0.81%	1.00%	Fail
-			Bedroom/R13	W25	1.52%	1.00%	Pass
-			Bedroom/R14	W26	4.38%	1.00%	Pass
-				W27			
-		Ground	Bedroom/R1	W1	13.34%	1.00%	Pass
-				W15			
-			Bedroom/R2	W2	3.71%	1.00%	Pass
-			Bedroom/R3	W3	4.07%	1.00%	Pass
-			Bedroom/R4	W4	7.90%	1.00%	Pass
-			LKD/R5	W5	3.43%	1.50%	Pass
-			LKD/R6	W6	3.42%	1.50%	Pass
-			Bedroom/R7	W7	1.65%	1.00%	Pass
-			Bedroom/R8	W8	1.11%	1.00%	Pass
-			LKD/R9	W9	3.27%	1.50%	Pass
-			Bedroom/R10	W10	2.25%	1.00%	Pass
-				W11			
-			Bedroom/R11	W12	0.99%	1.00%	Fail
-			Bedroom/R12	W13	4.13%	1.00%	Pass
-			LKD/R13	W14	3.63%	1.50%	Pass
-	Block Q	First	Bedroom/R1	W1	13.52%	1.00%	Pass
-				W22			

Red Text Cells do not meet the BRE recommendations  
Positive %age figures indicate an improvement  
in the natural lighting conditions

Dwg No	Address	Floor Level	Room Name	Window ID	ADF (Room) %age	Pass Rate %age	Condition
-	Block Q	First	Bedroom/R2	W2	12.30%	1.00%	Pass
-				W3			
-				W4			
-			Bedroom/R3	W5	12.21%	1.00%	Pass
-				W6			
-				W7			
-			Bedroom/R4	W8	12.25%	1.00%	Pass
-				W9			
-			LKD/R5	W10	1.59%	1.50%	Pass
-			Bedroom/R6	W11	4.71%	1.00%	Pass
-			LKD/R7	W12	5.87%	1.50%	Pass
-				W13			
-				W14			
-			Bedroom/R8	W15	3.28%	1.00%	Pass
-			Bedroom/R9	W15	3.58%	1.00%	Pass
-			LKD/R10	W16	2.11%	1.50%	Pass
-			LKD/R11	W17	6.15%	1.50%	Pass
-				W18			
-				W19			
-			Bedroom/R12	W20	4.32%	1.00%	Pass
-			LKD/R13	W21	2.31%	1.50%	Pass
-	Block R	Ground	Bedroom/R1	W1	4.97%	1.00%	Pass
-			Bedroom/R2	W2	4.99%	1.00%	Pass
-			Bedroom/R3	W3	4.70%	1.00%	Pass
-			Bedroom/R4	W4	2.76%	1.00%	Pass
-			Bedroom/R5	W5	1.92%	1.00%	Pass
-			Bedroom/R6	W6	1.83%	1.00%	Pass
-			LKD/R7	W7	1.20%	1.50%	Fail
-				W8			
-				W9			
-			LKD/R8	W10	1.25%	1.50%	Fail
-				W11			
-			Bedroom/R9	W12	4.09%	1.00%	Pass
-				W13			
-				W14			
-			LKD/R10	W15	4.36%	1.50%	Pass
-				W16			
-				W17			
-			Bedroom/R11	W18	1.65%	1.00%	Pass
-			Bedroom/R12	W19	0.98%	1.00%	Fail
-			LKD/R13	W20	2.23%	1.50%	Pass
-			Bedroom/R14	W21	2.06%	1.00%	Pass
-			LKD/R15	W22	3.74%	1.50%	Pass
-				W23			
-		First	Bedroom/R1	W1	3.73%	1.00%	Pass
-			Bedroom/R2	W2	3.76%	1.00%	Pass
-			Bedroom/R3	W3	3.56%	1.00%	Pass
-			Bedroom/R4	W4	2.87%	1.00%	Pass
-			Bedroom/R5	W5	4.51%	1.00%	Pass
-			Bedroom/R6	W5	3.62%	1.00%	Pass

Dwg No	Address	Floor Level	Room Name	Window ID	ADF (Room) %age	Pass Rate %age	Condition
-	Block R	First	LKD/R7	W6	0.64%	1.50%	Fail
-				W7			
-				W8			
-			Bedroom/R8	W9	1.12%	1.00%	Pass
-			Bedroom/R9	W10	0.95%	1.00%	Fail
-			LKD/R10	W11	5.39%	1.50%	Pass
-				W12			
-				W13			
-			LKD/R11	W14	5.30%	1.50%	Pass
-				W15			
-				W16			
-			Bedroom/R12	W17	1.64%	1.00%	Pass
-			Bedroom/R13	W18	0.97%	1.00%	Fail
-			LKD/R14	W19	2.19%	1.50%	Pass
-			Bedroom/R15	W20	7.47%	1.00%	Pass
-			LKD/R16	W21	6.65%	1.50%	Pass
-				W22			