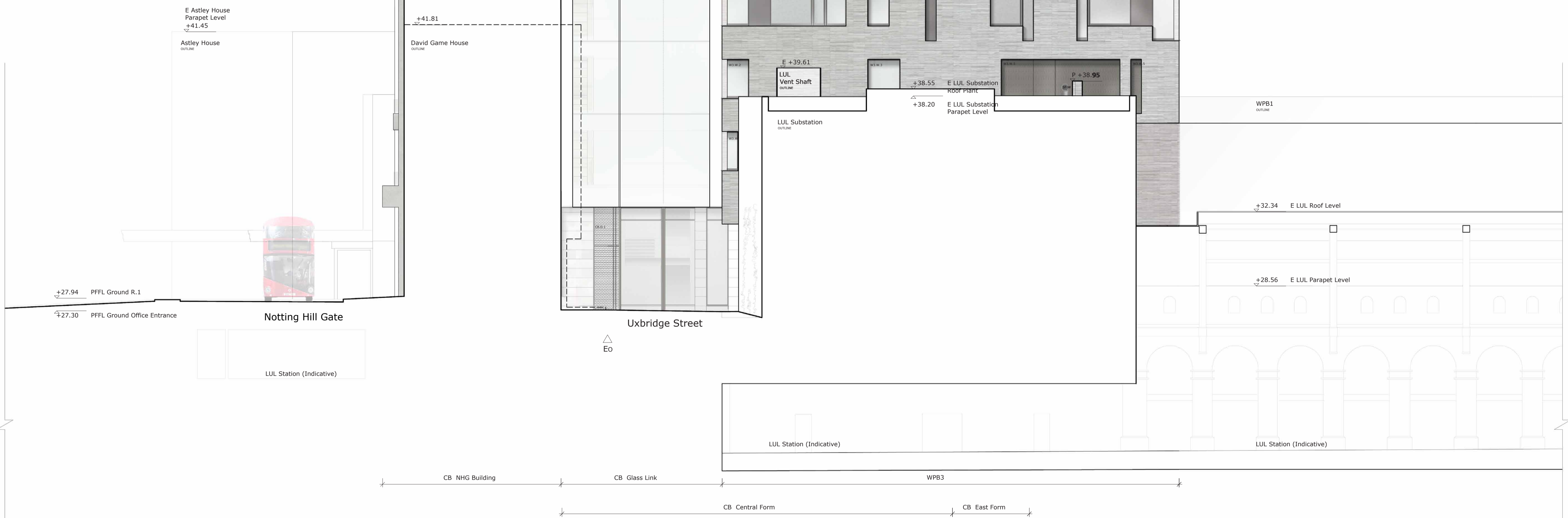


+99.35 P Central Form Parapet Level

+82.78 P East Form Parapet Level

+46.58 P NHG Balustrade Level
+45.93 P NHG Parapet Level

+57.38 P WPB3 Balustrade Level
+56.33 P WPB3 Parapet Level



Proposed CB, NHG & WPB3 West Elevation

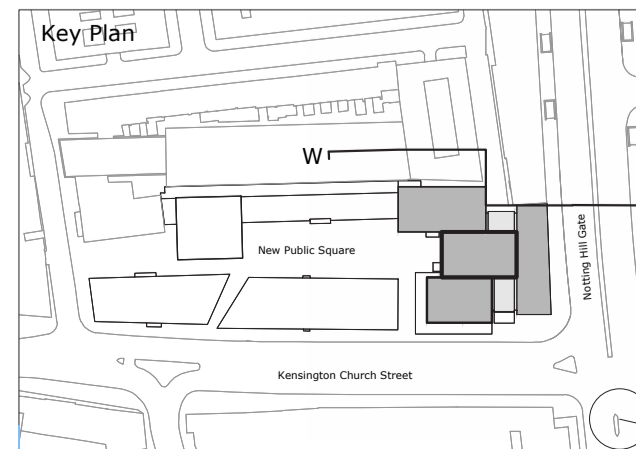
1:100

Facade Elements	CB.W.6	CB.W.4	CB.W.3	CB.W.2	CB.W.1
Corner Building - Central Form & East Form	Floor to ceiling recessed openings with horizontal dark metal spandrels - expressing rhythm of light infills within stone grid. Deep stone reveal with shadow gap detail to perimeter. Dark metal frame to fixed double glazing. Shadow gap detail to stone reveal and perimeter. Perforated dark metal screens with laser cut profiles, concealed fixing integrated into shadow gap detail and vertical metal frames.	Floor to ceiling recessed openings with horizontal dark metal spandrels - expressing rhythm of light infills within stone grid. Deep stone reveal with shadow gap detail to perimeter. Dark metal frame to fixed triple glazing, with inward opening top tilt only.	Floor to ceiling recessed openings with horizontal dark metal spandrels - expressing rhythm of light infills within stone grid. Deep stone reveal with shadow gap detail to perimeter. Dark metal frame to fixed triple glazing.	Floor to ceiling recessed openings with horizontal dark metal spandrels - expressing rhythm of light infills within stone grid. Deep stone reveal with shadow gap detail to perimeter. Dark metal frame to fixed triple glazing and glass to glass joint to open corner.	Floor to ceiling recessed openings with horizontal dark metal spandrels - expressing rhythm of light infills within stone grid. Deep stone reveal with shadow gap detail to perimeter. Dark metal frame to fixed triple glazing and glass to glass joint to open corner.
Building & Site References:	CB Corner Building - Central Form & East Form NHG Notting Hill Gate Building KCS1 Kensington Church Street Building 1 KCS2 Kensington Church Street Building 2 WPB1 West Perimeter Building 1 WPB2 West Perimeter Building 2 - Cube WPB3 West Perimeter Building 3 New Public Square - New Publicly Accessible Open Space	CB Corner Building - Central Form & East Form NHG Notting Hill Gate Building KCS1 Kensington Church Street Building 1 KCS2 Kensington Church Street Building 2 WPB1 West Perimeter Building 1 WPB2 West Perimeter Building 2 - Cube WPB3 West Perimeter Building 3 New Public Square - New Publicly Accessible Open Space	CB Corner Building - Central Form & East Form NHG Notting Hill Gate Building KCS1 Kensington Church Street Building 1 KCS2 Kensington Church Street Building 2 WPB1 West Perimeter Building 1 WPB2 West Perimeter Building 2 - Cube WPB3 West Perimeter Building 3 New Public Square - New Publicly Accessible Open Space	CB Corner Building - Central Form & East Form NHG Notting Hill Gate Building KCS1 Kensington Church Street Building 1 KCS2 Kensington Church Street Building 2 WPB1 West Perimeter Building 1 WPB2 West Perimeter Building 2 - Cube WPB3 West Perimeter Building 3 New Public Square - New Publicly Accessible Open Space	CB Corner Building - Central Form & East Form NHG Notting Hill Gate Building KCS1 Kensington Church Street Building 1 KCS2 Kensington Church Street Building 2 WPB1 West Perimeter Building 1 WPB2 West Perimeter Building 2 - Cube WPB3 West Perimeter Building 3 New Public Square - New Publicly Accessible Open Space

Material References:	Key	Key	Key	Key	Key
Stone (Central Form & East Form): Portland Stone, light coloured with a good balance between visual features and material consistency. Portland Stone variety to be selected following large sample review. Stone (NHG Building): Light textured stone. Colour to be a darker shade in comparison to Portland Stone selected for Corner building. Decision to be informed by large sample. Metal: Frames to be rich dark patinated aluminium bronze. All visually exposed metal elements including frames to windows, doors, panels and cladding panels to match in colour. Perforated Metal: Removable dark metal panels to horizontal strips and to vertical feature panels. All visually exposed metal elements including frames to windows, doors, panels and cladding panels to match in colour.	Automatic Operable Vent BA Balcony Building Maintenance Unit Canopy at 1st floor Cycle Storage - Office Cycle Storage - Residential Cycle Storage - Retail Existing Level Emergency Exit Entrance Office Entrance Office Service Entrance Residential Entrance Retail	ERT-S Entrance Retail Service ESO Entrance Flexible Surgery/Office ESU-S Entrance Flexible Surgery/Office LL Lower Level NL New Level Proposed Level PF Perforated Finish Floor Level RF Retail RF-O Retail - Office RF-R Residential RF-RT Residential - Retail RF-SO Refuse - Flexible Surgery/Office S Service SG Shadow Gap Detail SL Soft Landscape	ERT-S Entrance Retail Service ESO Entrance Flexible Surgery/Office ESU-S Entrance Flexible Surgery/Office LL Lower Level NL New Level Proposed Level PF Perforated Finish Floor Level RF Retail RF-O Retail - Office RF-R Residential RF-RT Residential - Retail RF-SO Refuse - Flexible Surgery/Office S Service SG Shadow Gap Detail SL Soft Landscape	SFA Zone within the proposed substitute that is safeguarded for potential future step free access to District 8 (Circ 1) Line SF-R Services Flat Discovers SF-W Services Flat Discovers TP Tree Pit UL Upper Level VH1-2 Vehicle Lifts WA Wheelchair accessible unit WAC Wheelchair accessible unit WRT Water Retention Tank	General Notes: Do not scale from drawings. All omissions and discrepancies to be reported to the architect immediately. This drawing is to be read in conjunction with all relevant Architectural drawings and documents, and consultant information. All structural information is to structural consultant design and information. All services and fire strategy information is to be derived and fire consultant design and information. All dimensions must be verified on the site. The contents of the drawing are Urban Sense Consultancy Architects Ltd copyright and shall not be re-used without their written permission. Information on existing buildings on the site and its immediate context along its boundary is as per survey information by Streets Survey Ltd. All heights given are AOD. Information on the wider site context is as per OZ map in plan and Z mapping for meaning of information. LUL station is as per LUL survey of installations - see LUL Overlay of LUL survey info with zoning Survey info. Where survey information was unavailable from LUL, a note is illustrated. Indirectly linked Aup modelling of historic, active info. 1:5 Kensington Church Street is illustrated as per approved planning drawings - indicative representation only.

Key	Key	Key	Key	Key	Key
CB.W.6	CB.W.4	CB.W.3	CB.W.2	CB.W.1	NHG.2
Deep reveal to opening. Dark metal updated with shadow gap detail, fixed double glazing and operable double glazed entrance door with metal handle detail. Retail signage with discretely integrated vents.	Double Height - Top Corner Permanently naturally ventilated Winter Garden. Outer skin to WG - fixed glazed panels with glass to glass corner joints. Continuous ventilation gaps to perimeter. Glass roof with glass to glass joint with facade. Glazing framework supported off a secondary steel frame set back from the outer glass front and with unobstructed glass to glass corners. Deep stone reveal with shadow gap detail to perimeter. Dark metal frame to triple glazing, with inward opening top tilt and turn, and fixed glass to glass joint to top corner. Plaster with trees and seating integrated.	Deep reveal to opening. Sliding double glazed door. Inward operable double glazed door. Dark metal updated with shadow gap detail, fixed double glazing and operable double glazed entrance door with metal handle detail. Dark metal frame to double glazed inward opening top tilt.	Two layers of translucent material form top canopy layer and soffit layer allowing natural light to penetrate whilst obscuring visibility through. Concealed canopy structure is integrated between layers. Concealed gutter is integrated into adjacent stone cladding system. Glass balustrade with concealed fixing to stone cladding parapet with integrated concealed gutter to form light top to building.	Two layers of translucent material form top canopy layer and soffit layer allowing natural light to penetrate whilst obscuring visibility through. Concealed canopy structure is integrated between layers. Concealed gutter is integrated into adjacent stone cladding system. Glass balustrade with concealed fixing to stone cladding parapet with integrated concealed gutter to form light top to building.	Large glass panels (double glazed) supported off a steel framed suspension systems with horizontal dark metal spandrels. Perforated dark metal panel to horizontal strips fixed back to structure by discreet bracketry. Glass to glass corner.

Key	Key	Key	Key	Key	Key
CB.W.6	CB.W.4	CB.W.3	CB.W.2	CB.W.1	NHG.2
Deep reveal to opening. Dark metal updated with shadow gap detail, fixed double glazing and operable double glazed entrance door with metal handle detail. Dark metal frame to double glazed inward opening top tilt.	Double Height - Top Corner Permanently naturally ventilated Winter Garden. Outer skin to WG - fixed glazed panels with glass to glass corner joints. Continuous ventilation gaps to perimeter. Glass roof with glass to glass joint with facade. Glazing framework supported off a secondary steel frame set back from the outer glass front and with unobstructed glass to glass corners. Deep stone reveal with shadow gap detail to perimeter. Dark metal frame to triple glazing, with inward opening top tilt and turn, and fixed glass to glass joint to top corner. Plaster with trees and seating integrated.	Deep reveal to opening. Sliding double glazed door. Inward operable double glazed door. Dark metal updated with shadow gap detail, fixed double glazing and operable double glazed entrance door with metal handle detail. Dark metal frame to double glazed inward opening top tilt.	Two layers of translucent material form top canopy layer and soffit layer allowing natural light to penetrate whilst obscuring visibility through. Concealed canopy structure is integrated between layers. Concealed gutter is integrated into adjacent stone cladding system. Glass balustrade with concealed fixing to stone cladding parapet with integrated concealed gutter to form light top to building.	Two layers of translucent material form top canopy layer and soffit layer allowing natural light to penetrate whilst obscuring visibility through. Concealed canopy structure is integrated between layers. Concealed gutter is integrated into adjacent stone cladding system. Glass balustrade with concealed fixing to stone cladding parapet with integrated concealed gutter to form light top to building.	Large glass panels (double glazed) supported off a steel framed suspension systems with horizontal dark metal spandrels. Perforated dark metal panel to horizontal strips fixed back to structure by discreet bracketry. Glass to glass corner.



Rev.	Date	Details	Drawn/Checked	Project/Client	Project no.
A	09/07/18	GA call in amendments		NH&KCS Notting Hill Gate KCS Ltd.	1059
				Proposed CB, NHG & WPB3 West Elevation	06/09/17
				issued for Planning	CS VB/DL

urban sense
Urban Sense Consultancy Architects Ltd.
49 Wandou Street, 4th floor
London W1F 0UB | 020 7436 9707
© Urban Sense Consultancy Architects Ltd.