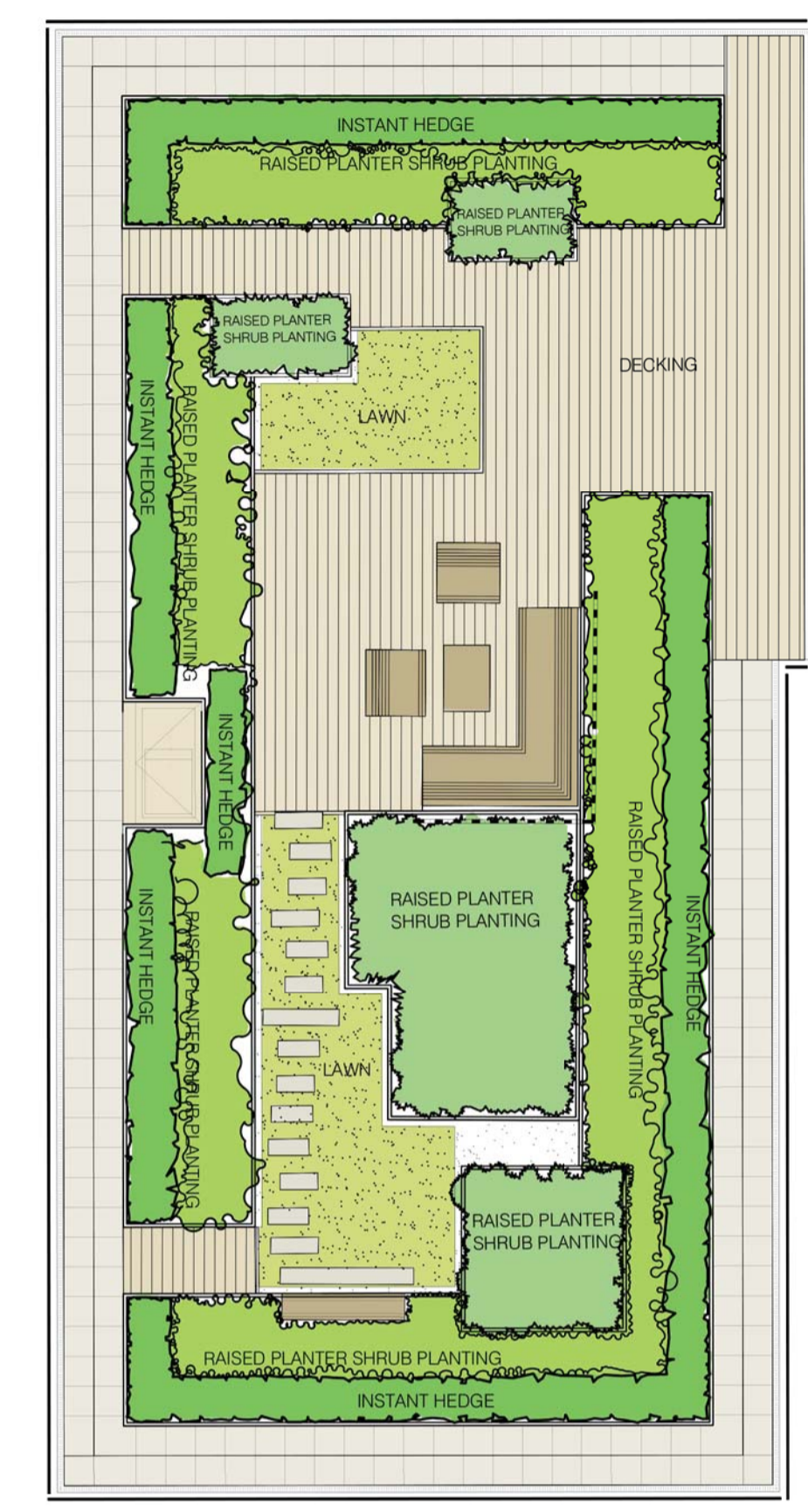
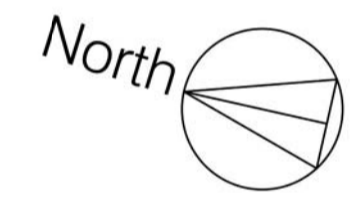


LANDSCAPE LAYOUT 1:50



PLANTING AREAS 1:100

NOTES

ALL INTENSIVE GARDEN DECK BUILD-UP DETAILS ASSUME OVERALL BUILDUP OF 500MM, WITH 250MM OF LANDSCAPE MATERIALS AND 250 MM INCORPORATING INSULATION AND WATERPROOFING LAYER TO USCA SPEC. LANDSCAPE PAVING DEPTHS FINE-TUNED WITHIN OVERALL DECK DEPTHS AS SET OUT BELOW.

PERIMETER PAVING TO MAINTENANCE PATH:
 PERIMETER DRAIN:
 100MM WIDE GALVANISED GULLY FRAME IN CONNECTED SECTIONS WITH GALVANISED 'ORSGRILLE' PATTERN SCREW-DOWN GRILLE SECTION TO SUIT.
 BAUDER MINERAL DRAIN
 LATERAL FILTER FLEECE TO EDGE OF DSE40 DRAIN LAYER
 PATHWAY:
 450 2 PCC PAVING SLABS, OPEN JOINTS WITH SPACERS OVER
 3.5MM CRUSHED GRAVEL 30-50MM DEPTH
 BAUDER FILTER FLEECE
 BAUDER DSE 40 FILLED WITH BAUDER MINERAL DRAIN. MINERAL DRAIN DEPTH TO BE ADJUSTED TO ACCOMMODATE OVERALL 500MM BUILD-UP LEVELS
 BAUDER FSM100 FIBRE PROTECTION MAT
 TO USCA SPEC.
 BAUDER PE FOIL SEPARATION LAYER (2 LAYERS)
 BAUDER WATERPROOFING SYSTEM
 INSULATION

TIMBER DECKING:
 25MM X 75MM EUROPEAN ROBINIA (ROBINIA PSEUDACACIA) HARDWOOD DECKING, RIBBED FINISH, 65MM GAPS. JOCKING BOARDS TO BE SCREW FIXED USING PROPRIETARY HIDDEN SPACER FIXINGS BETWEEN BOARDS TO JOISTS OVER BAUDER PEDESTAL SUPPORT SYSTEM. SIZE AND SPAN OF JOISTS TO BE CALCULATED ONCE THE LIVE LOAD REQUIREMENTS ARE ESTABLISHED.
 OVER:
 BAUDER PEDESTAL SUPPORT ADJUSTED TO ACCOMMODATE OVERALL 500MM RUII D-UP LEVELS
 BAUDER FSM100 FIBRE PROTECTION MAT
 TO USCA SPEC.
 BAUDER PE FOIL SEPARATION LAYER (2 LAYERS)
 BAUDER WATERPROOFING SYSTEM
 INSULATION

CORTEN EDGING:
 CORTEN EDGING TO SUPPORT SOIL IN LAWN TO BE 210MM HIGH WITH BOTTOM EDGE ROLLED 50MM.
 CORTEN EDGING TO DECKING TO BE 210MM HIGH WITH BOTH ENDS ROLLED 50MM.

STONE PAVING ELEMENTS
 STONE TO MATCH ASHLAR FACADE CLADDING, VARYING LENGTHS WITHIN DESIGN, DEPTH TO BE AGREED.

GRAVEL
 GRAVEL TO BE CRUSHED FLINT GRAVEL, 6-10MM. GRAVEL TO FORM 100MM WIDE MOWING STRIP AT EDGE OF PLANTERS, AND INFILL PAVING WHERE SHOWN.

PLANTERS FORMED FROM CORTEN SHEET 5MM THICK, 50MM FOLDED RETURN AT TOP EDGE. ASSUMED SECTIONAL CONSTRUCTION WITH PLATE ELEMENTS 2M LONG, FIXED TO GALVANISED FRAME WITH COUNTERSUNK FITTINGS, WITH FINISHED HEIGHTS ABOVE DECK AS SHOWN. MAIN PLANTERS 0.45M, FREESTANDING PLANTER 0.4M. BASE OF CORTEN PLANTERS AND SUPPORTING FRAME REST ON BAUDER FILTER FLEECE AND DSE 40 DRAINAGE / MINERAL DRAIN AS ELSEWHERE. ALL FINELY ADJUSTED TO ENSURE EVEN PLANTER LINE AND LEVEL.

PLANTER GROWING MEDIUM TO BE:
 BAUDER INTENSIVE SUBSTRATE LIGHTWEIGHT GROWING MEDIUM, OR FREE-DRAINING TOPSOIL TO B.S. DEPENDING ON WEIGHT LIMITATIONS. DEPTH OF GROWING MEDIUM DEPENDENT ON PLANTED AREA AND GROWING MEDIUM DEPTH TO ACCOMMODATE ANY VARIATION IN OVERALL DECK BUILD-UP LEVELS (IE ONLY ADJUST LEVELS WITH MINERAL DRAIN IN PAVED AREAS - SEE PAVING SPECS. FOR TURF AREAS, ALLOW SURFACE 10MM BEDDING COMPOST. TERRAM GEOCOMPOSITE BONDED GEOTEXTILE/MESH TO LINE PLANTER SIDES AND BASE. TO USCA SPEC.
 BAUDER PE FOIL SEPARATION LAYER (2 LAYERS)
 BAUDER WATERPROOFING SYSTEM
 INSULATION

TURF AREAS:
 20MM TURF
 10MM BEDDING COMPOST
 200MM INTENSIVE SUBSTRATE
 BAUDER FILTER FLEECE
 BAUDER DSE 40 DRAIN

PLANTING:
 HEDGE: INSTANT PORTUGUESE LAUREL HEDGE SUPPLIED AS READY GROWN STOCK TO 1.55M TALL, TO PROVIDE 2M SCREEN INCLUDING PLANTER DEPTH. GROWING MEDIUM DEPTHS APPROX 650MM (450 ABOVE FFL, 200 BELOW).
 MEDIUM SHRUBS AND AMENITY PLANTING, WELL ESTABLISHED PLANTS, TYPICALLY 1.5M POT SIZE. GROWING MEDIUM DEPTHS APPROX 650MM (450 ABOVE FFL, 200 BELOW) IN MAIN PLANTER AND APPROX 500MM (300 ABOVE FFL, 200 BELOW) IN FREE-STANDING PLANTERS, BUT 460MM (+ DRAIN LAYER) IN LIFT OVER-RUN PLANTER.
 TURF - PREMIUM GRADE TURF SPECIFICALLY PROVIDED AS LOW MAINTENANCE SHADE TOLERANT GRASS SPECIES. GROWING MEDIUM DEPTHS APPROX 210MM.

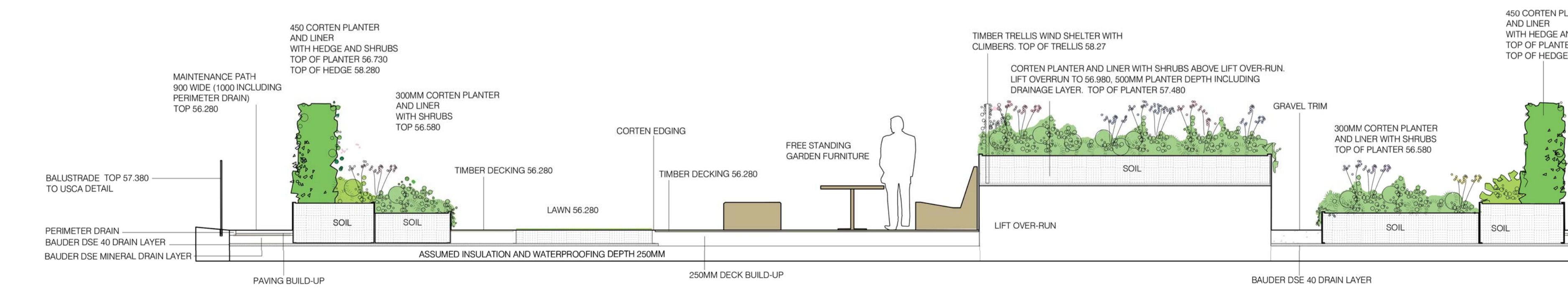
IRRIGATION SYSTEM TO INTENSIVE GARDENS:
 IRRIGATION SYSTEM BY ACCESS IRRIGATION LTD - INCLUDING PUMP, TANK, FERTILISER DOSER, & CONTROLLER. REQUIRES MAINS WATER SUPPLY AND ELECTRICITY SUPPLY.
 FEEDS IRRIGATION VIA 'LEAKY PIPE' / Drip IRRIGATION SYSTEM THROUGH PLANTER BEDS. SUPPLY PIPES RUN BENEATH DECKING LAYER.
 ALSO REQUIRES FREESTANDING RAIN SENSOR (WIRED / WIRELESS)

GARDEN LIGHTING:
 ALLOW FOR MAINS CONNECTION FOR GARDEN LIGHTING AND APPLIANCES WITH 2 X WEATHERPROOF EXTERNAL SOCKETS AND SPACE FOR LIGHTING CONTROL / PROGRAMMING BOARDS TO SPECIALIST GARDEN LIGHTING DESIGN REQUIREMENT. PROVIDE 50MM DUCTING WITH DRAW WIRES AND CAPPED ENDS BENEATH PAVED SURFACE / DECKING, THROUGH BASE OF PLANTER WALLS, BETWEEN ANY PLANTING BEDS.

EXTERNAL TAP
 ALLOW EXTERNAL WATER SUPPLY WITH BIB TAP AND THREADED HOSE CONNECTION FOR GARDEN MAINTENANCE / WASH-DOWN PURPOSES. THIS TAP IS ADDITIONAL TO WATER SUPPLY FOR AUTOMATED IRRIGATION.

FREE-STANDING FURNITURE IS SHOWN FOR ILLUSTRATIVE PURPOSES ONLY.

TIMBER TRELLIS SCREEN TO BE PLANTED ROBINIA HARDWOOD 22 X 22 SECTION JOINED TO FORM A 75 X 75 CENTRED GRID. TRELLIS SET APPROXIMATELY 100MM ABOVE PLANTER SOILS TO HEIGHT AS SHOWN. DIMENSIONS TO INCLUDE ROBINIA FRAMING 40 X 40, AND ROBINIA POSTS 75 X 50, HELD IN PLACE WITH GALVANISED ANCHOR FRAME IN PLANTER AND BY VIRTUE OF 90 DEGREE JUNCTION IN PLANTER LINE.



LANDSCAPE SECTION 1:50

NOTE: THIS DRAWING IS A REVISED VERSION OF 0586SK16 AS ISSUED FOR THE SEPTEMBER 2017 PLANNING APPLICATION

REVISIONS	REV	DATE	COMMENT
A	05.06.18		REVISION OF LEVELS AND LIFT OVER-RUN ETC.
B	05.07.18		ADDITION OF TRELLIS ADJACENT TO SEATING AREA

CLIENT:
NOTTING HILL GATE KCS LTD.

PROJECT:
NEWCOMBE HOUSE AND KENSINGTON CHURCH STREET

DRAWING TITLE:
BUILDING WPB3 INTENSIVE GARDEN LEVEL G+6

DATE: JULY'18 1:50&1:100 @A1
 SCALE: 1:50&1:100 @A1
 DRAWING NO: 0586.SK16 B
 REV: ADAMS HABERMEHL
 22 THE NURSERY, SUTTON COURTENAY, ABINGDON, OXON, OX14 4UA
 TEL: 01235 847795