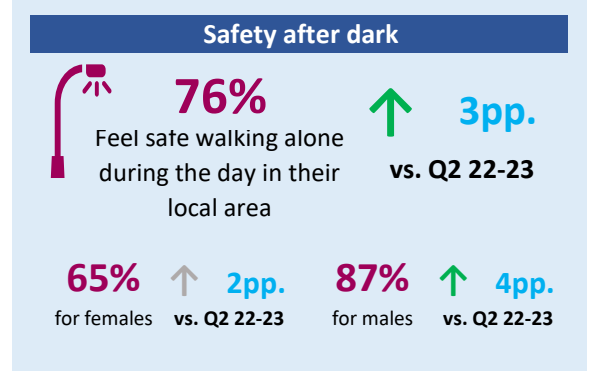
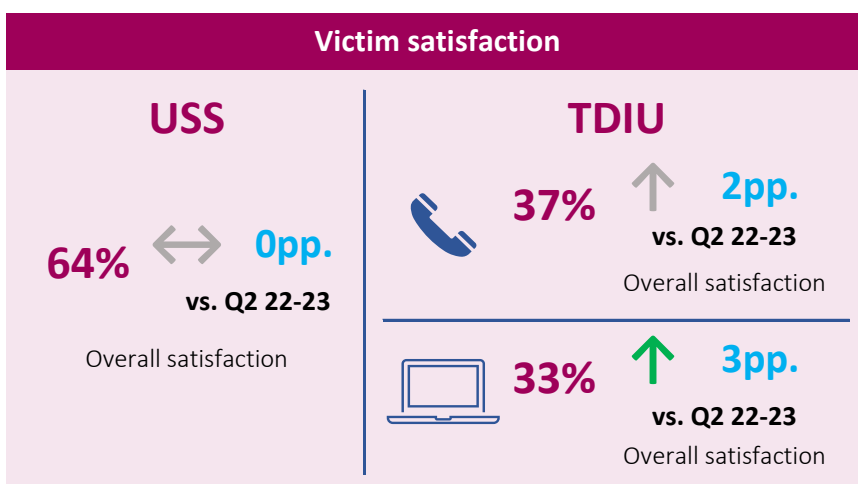
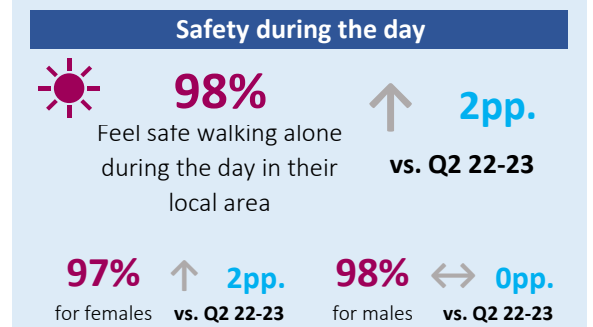
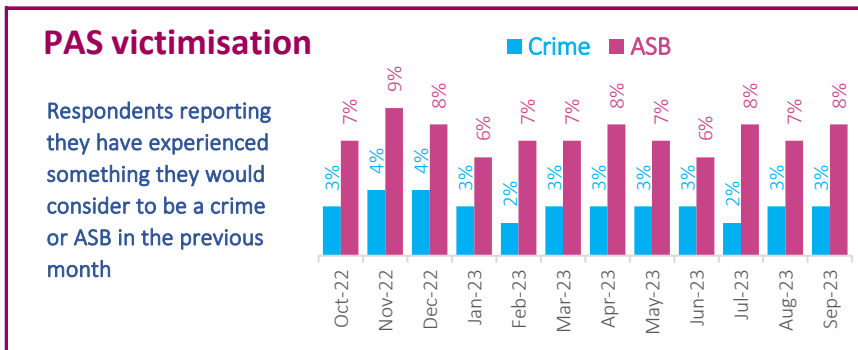
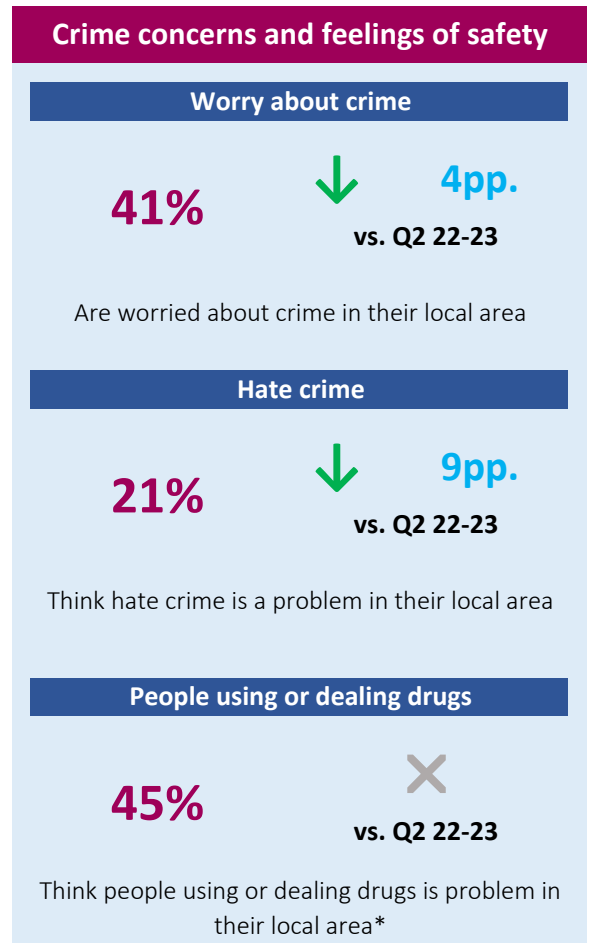
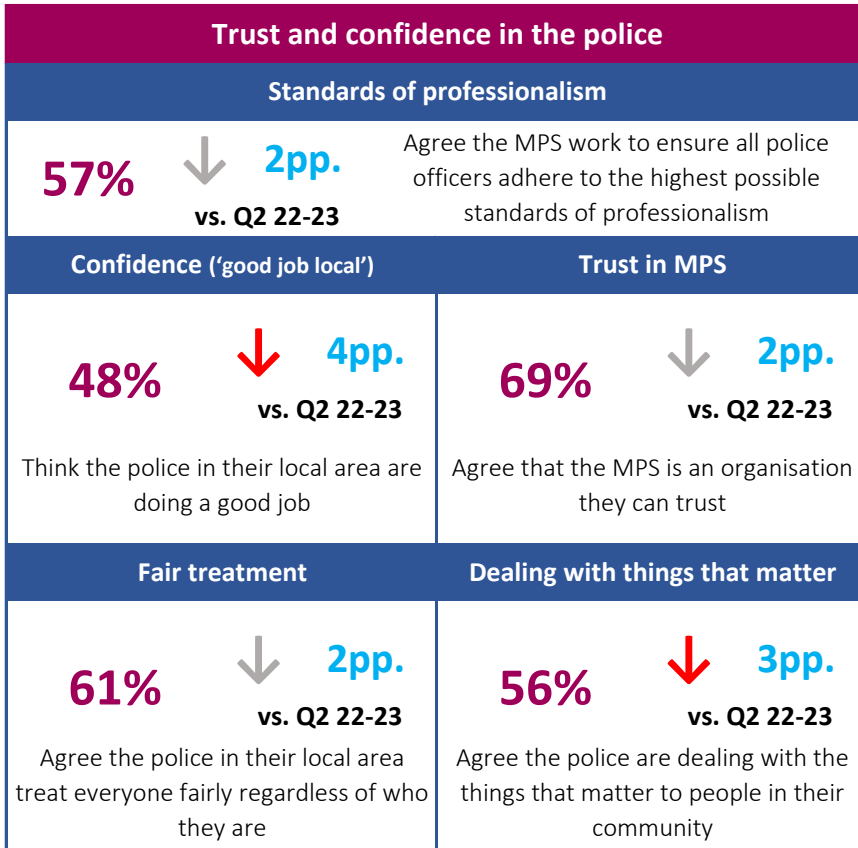


How have things changed over the last 12 months?



* Comparison data with previous year not available as question wording has changed.

PAS data collection changed from telephone in Q4 21-22 to a mix of telephone and face-to-face in Q1 22-23. Please note that this change in methodology will affect the comparability of trends. Red and green arrows indicate notable change of 3 percentage points or more compared to the previous quarter. All data are discrete quarter except where stated.

How have things changed over the last 12 months?

Quarterly insights

Looking at the national picture of confidence, Crime Survey for England and Wales data show that the MPS/CoLP rank 19th out of 42 police forces on confidence (51%, rolling 12 months to Q1 2023-24). This is above the MPS's Most Similar Group: West Midlands ranked 33rd (47%), West Yorkshire 40th (44%) and Greater Manchester 42nd (40%).

Widening perception gaps for LGBT+ Londoners have continued into FY 23-24. Whilst overall MPS levels have remained more stable over recent years, results for LGBT+ Londoners have seen sustained downwards trajectories. The size of these inequalities have widened further in FY 23-24, driven by particularly low results for LGBT+ Londoners.

Appetite for involvement in police oversight is high among Londoners. Londoners were most likely to feel the public should be involved in reviewing police use of Stop & Search, general service delivery and performance, and professional standards. Certain groups of Londoners were more likely to feel the public should be involved in reviewing police work. LGBT+ Londoners, Mixed/Black ethnicity Londoners and those with lower trust and confidence were more likely to want public involvement in reviewing intrusive tactics in particular.

Results for Q2 2023-24 show that the majority of Londoners feel safe waiting for public transport alone in their local area both during the day (98% for bus, train and tube) and after dark (82% bus, 85% train and 87% tube).

PCP trust and confidence measures: borough-level performance

Borough-level results (R12 data). Red arrows show declines of -5pp. or more compared with the same point last year, while green arrows show increases of +5pp. or more.	Police do a good job in the local area (Good job)	The MPS is an organisation that I can trust (Trust MPS)	Agree the police treat everyone fairly regardless of who they are (Fair treatment)	Agree the police are dealing with the things that matter to this community (Dealing issues)
Barking and Dagenham	49%	71%	66%	59%
Barnet	48%	73%	68%	62%
Bexley	54%	73%	72%	56%
Brent	53%	77%	71%	64%
Bromley	54%	68%	65%	56%
Camden	44%	67%	48%	53%
Croydon	38%	64%	58%	51%
Ealing	50%	79%	76%	69%
Enfield	42%	70%	66%	55%
Greenwich	46%	68%	62%	55%
Hackney	40%	58%	48%	48%
Hammersmith and Fulham	50%	66%	59%	54%
Haringey	44%	62%	53%	53%
Harrow	63%	82%	85%	78%
Havering	51%	75%	71%	63%
Hillingdon	61%	84%	84%	78%
Hounslow	50%	75%	70%	62%
Islington	43%	60%	47%	52%
Kensington and Chelsea	60%	78%	70%	64%
Kingston upon Thames	47%	76%	61%	57%
Lambeth	44%	60%	51%	46%
Lewisham	41%	59%	50%	46%
Merton	54%	77%	69%	61%
Newham	46%	71%	61%	54%
Redbridge	46%	67%	66%	57%
Richmond upon Thames	53%	69%	60%	50%
Southwark	47%	64%	51%	48%
Sutton	51%	80%	74%	68%
Tower Hamlets	44%	71%	61%	55%
Waltham Forest	38%	58%	50%	42%
Wandsworth	51%	68%	59%	56%
Westminster	59%	74%	67%	65%
MPS	48%	70%	64%	57%

Borough performance across the four PCP trust and confidence measures remains mixed, with many London boroughs seeing declines over the last year but some seeing improvements.