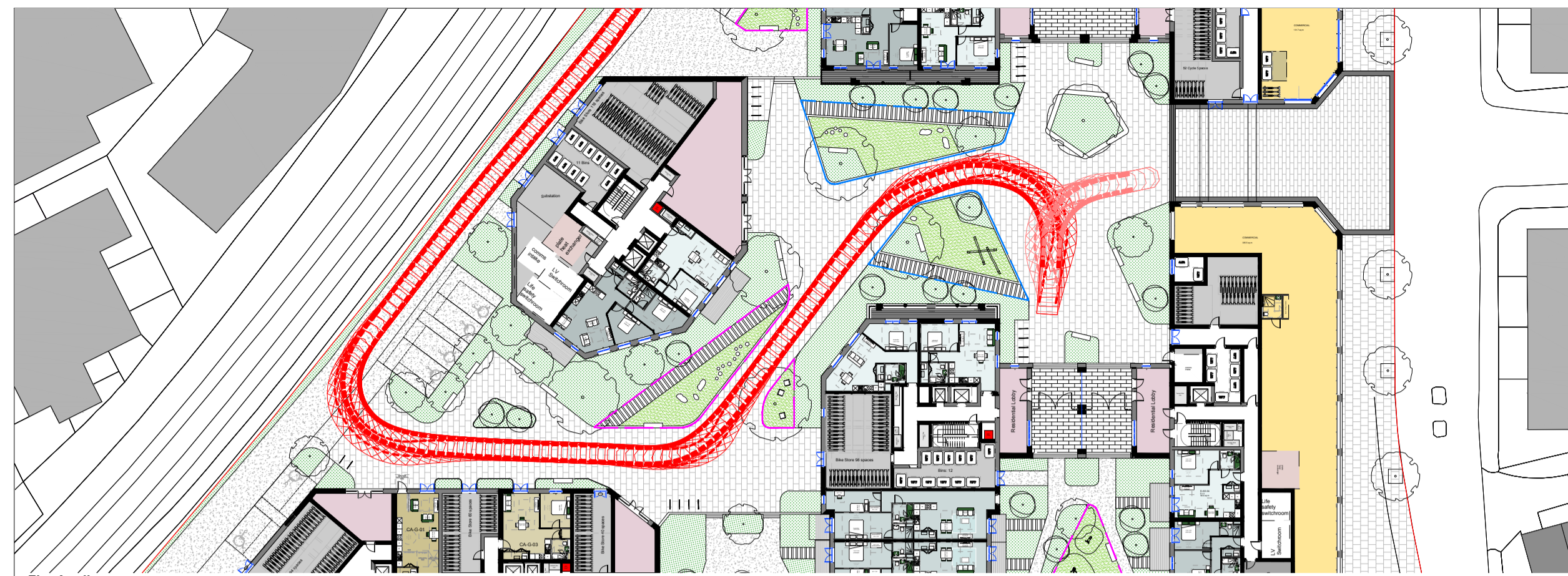
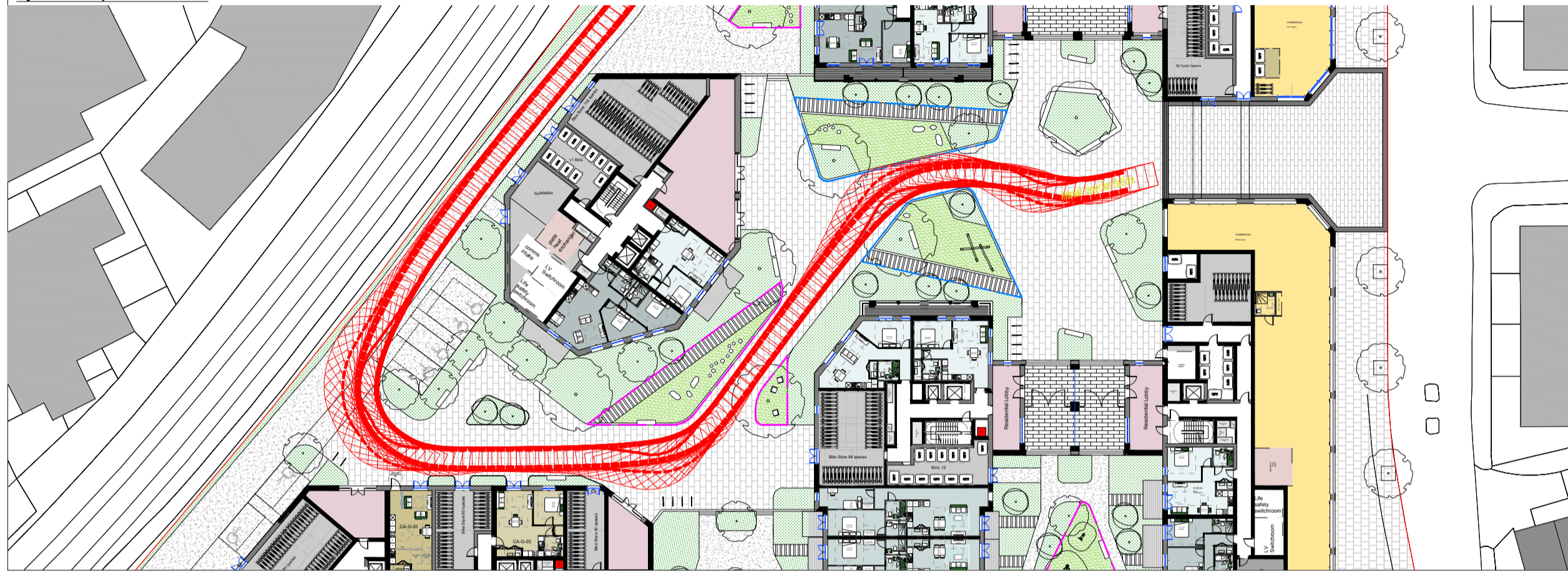


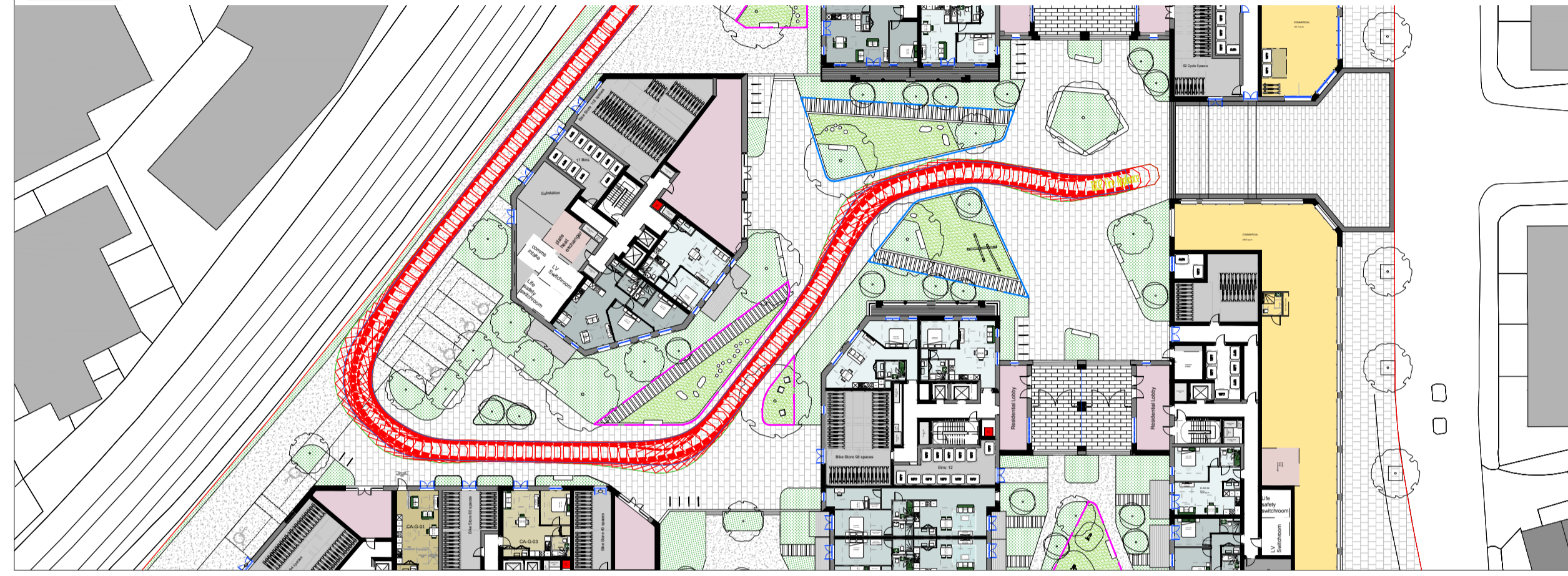
Hydraulic Inspection Platform



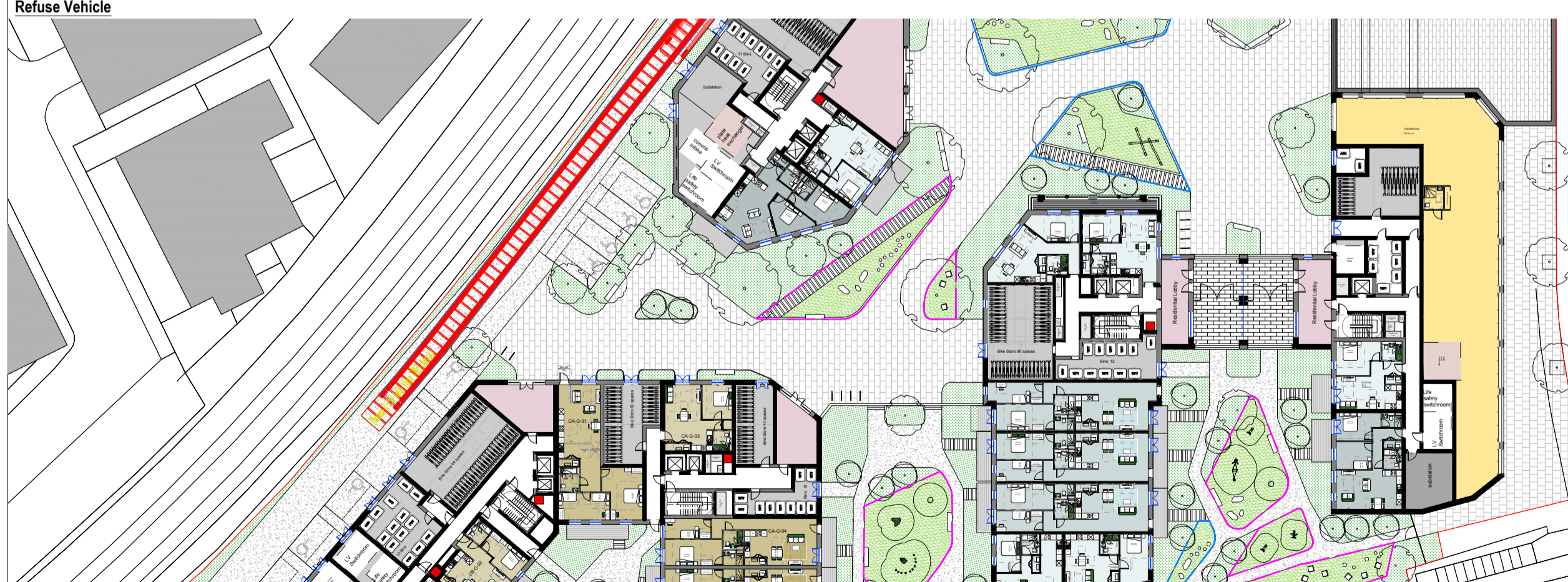
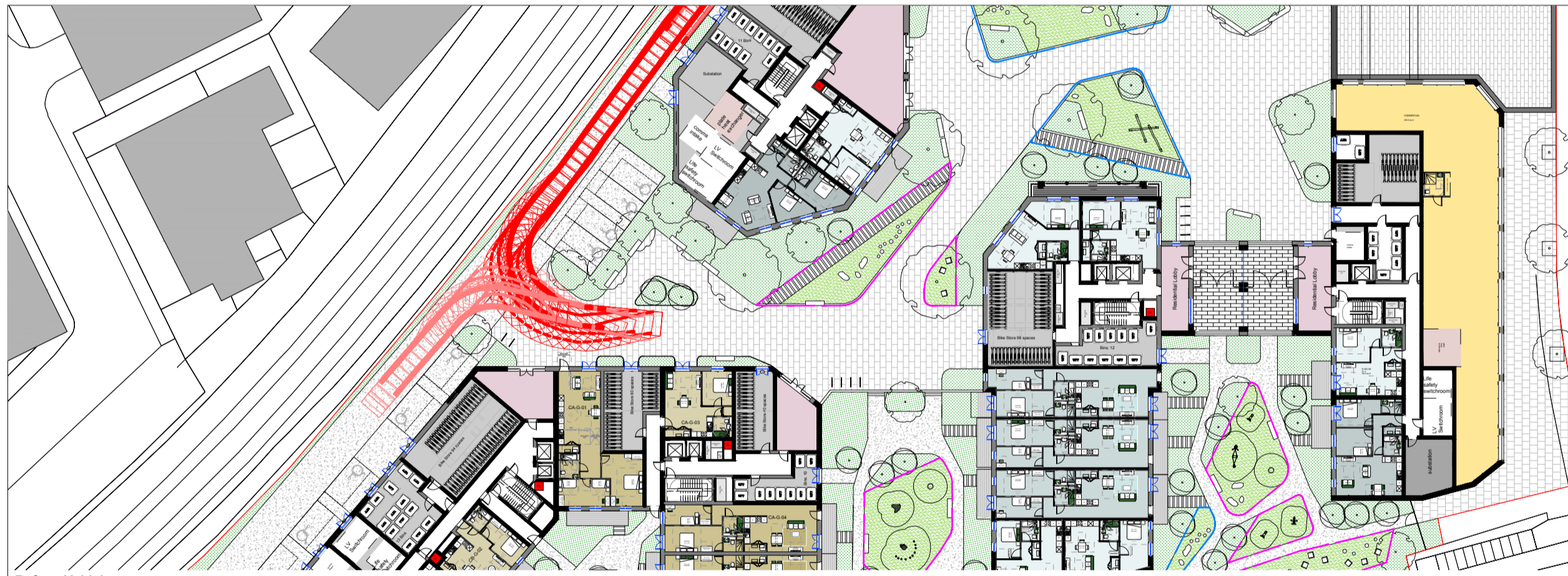
Fire Appliance



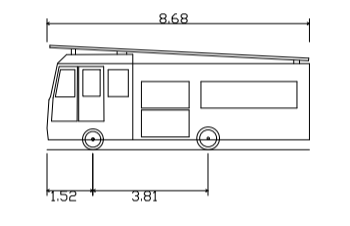
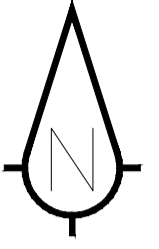
Refuse Vehicle



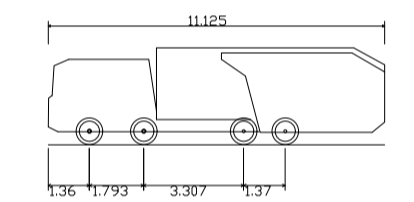
Rigid Vehicle



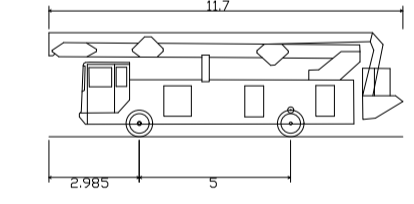
- Sanderson Associates (Consulting Engineers) Ltd ("the consultant"), has not checked or verified, and shall have no liability whatsoever for any inaccuracies which may be attributable to any data, reports, base plans) and drawings provided by the client, or purchased by the consultant on the client's behalf, that may have been utilised within this drawing.
- The consultant shall not be liable for the use by any person of any document for any purpose other than that for which the same were provided by the consultant.
- No liability whatsoever is accepted by the consultant for any error or omissions.
- The consultant accepts no liability for any vehicle specification errors within the vehicle track software used and / or it's vehicle libraries.
- The locations of utilities apparatus, if shown, is reproduced from plans supplied to the consultant, although care has been taken when duplicating this information. These locations are approximate only and no guarantee can be given for their accuracy. It is the client's or it's appointed agent/contractors responsibility to verify the exact locations on site by hand dug trial holes or other appropriate means prior to mechanical excavation.
- Service connections are not shown but their presence should be anticipated.
- Reference to any third party equipment shown on this drawing was only relevant at the time the drawing was prepared.
- It is the client's responsibility to ensure that any equipment ordered meets the design.



DB32 Fire Appliance
 Overall Length 8.680m
 Overall Width 2.380m
 Overall Body Height 2.455m
 Min Body Ground Clearance 2.337m
 Max Track Width 2.121m
 Lock to lock time 9.60s
 Kerb to Kerb Turning Radius 9.910m



Phoenix 2-25W (with Volvo FM12 chassis)
 Overall Length 11.025m
 Overall Width 2.367m
 Overall Body Height 2.367m
 Min Body Ground Clearance 2.205m
 Track Width 2.500m
 Lock to lock time 4.80s
 Kerb to Kerb Turning Radius 9.250m



Hydraulic Inspection Platform
 Overall Length 11.700m
 Overall Width 2.450m
 Overall Body Height 2.450m
 Min Body Ground Clearance 2.416m
 Track Width 2.450m
 Lock to lock time 9.00s
 Kerb to Kerb Turning Radius 9.375m