

CIS2013-04

Diversity in London

June 2013



copyright

Greater London Authority
June 2013

Published by

Greater London Authority
City Hall
The Queens Walk
London SE1 2AA

www.london.gov.uk

Tel 020 7983 4922

Minicom 020 7983 4000

Cover photograph © Daryl Rozario

For more information about this publication, please contact:

Census Information Scheme, GLA Intelligence

Tel 020 7983 4922

Email census@london.gov.uk

Data and analysis from GLA Intelligence form a basis for the policy and investment decisions facing the Mayor of London and the GLA group . "The GLA Intelligence Unit uses a wide range of information and data sourced from third party suppliers within its analysis and reports . GLA Intelligence cannot be held responsible for the accuracy or timeliness of this information and data.

The GLA will not be liable for any losses suffered or liabilities incurred by a party as a result of that party relying in any way on the information contained in this report..

Contents

Contents.....	3
List of Tables and Figures.....	4
Introduction	5
Ethnicity.....	6
Religion	8
Country of Birth.....	9
Passports Held.....	11
Age structure.....	12
Age Structure by ethnicity.....	13
White British ethnicity	13
Non-British White ethnicity	14
Mixed ethnicity.....	15
Asian/Asian British ethnicity	16
Black/African/Caribbean/Black British ethnicity.....	17
Arab ethnicity	18
Age structure by religion	20
Age structure by country of birth	25
Gender by country of birth	28
Ethnicity by country of birth.....	30
White ethnicity	30
Mixed ethnicity.....	31
Asian/Asian British ethnicity	31
Black/Africa/Caribbean/Black British ethnicity.....	31
Other ethnicity	32
Ethnicity by religion.....	33
Country of birth by religion	35
Country of birth by passports	38

List of Tables and Figures

Figure 1: Ethnic Group populations in London, 2001 and 2011	6
Figure 2: Religious group populations in London, 2001 and 2011	8
Figure 3: Country of birth of London residents (countries with more than 60 thousand residents), 2011.....	10
Figure 4: London residents holding non-UK passports, 2011	11
Figure 5: Age structures of London and England, 2011	12
Figure 6: Age Structure of the White British population in London, 2001 and 2011	14
Figure 7: Age Structure of the White non-British population in London, 2001 and 2011.....	15
Figure 8: Age Structure of the Mixed ethnicity population in London, 2001 and 2011	15
Figure 9: Age Structure of the Asian population in London, 2001 and 2011	17
Figure 10: Age Structure of the Black population in London, 2001 and 2011	18
Figure 11: Age structure of the Arab population in London, 2011	19
Figure 12: Age structure of residents with no religion in London, 2011	20
Figure 13: Age structure of the Buddhist, Hindu & Sikh populations in London, 2011	21
Figure 14: Age structure of the Christian & 'Religion not stated' populations in London, 2011	21
Figure 15: Age structure of the Jewish population in London, 2011	22
Figure 16: Age structure of the Muslim population in London, 2011	23
Figure 17: Age structure of the 'other religion' population in London, 2011.....	24
Figure 18: Age structure by region of birth in London, 2011	25
Table 1: Proportion of London residents born in the UK for four age cohorts, 2011	26
Figure 19: Proportion of residents by non-UK country of birth for four age cohorts, 2011.....	27
Figure 20: Ratio of males to females by region of birth, London residents, 2011	28
Figure 21: Male and female age structure of African-born Londoners, 2011.....	29
Figure 22: Country of birth by broad ethnic group, London residents, 2011	30
Figure 23: Ethnic make-up of religious groups in London, 2011	33
Figure 24: Region of birth of residents by religion, London residents, 2011	35
Figure 25: Religion of London residents by country of birth, 2011	36
Figure 26: Passports held by non-UK-born London residents, 2011	38
Figure 27: UK passport holders by country of birth, London residents, 2011	40

Introduction

London is the most diverse city in the United Kingdom; it contains the most diverse local authorities and has the most diverse wards. Diversity in this context refers to the inter-related demographic characteristics of ethnicity, country of birth, nationality and religious belief. The 2011 Census provides a wealth of data in this area with both univariate (data on a single variable) and multivariate (two or more variables cross-tabulated) tables. Nationality is difficult to measure directly and in the census the passport a resident holds is often used as a proxy. The data exploring the relationship between country of birth and passport held is one of the richest and most enlightening datasets in the census.

As London continues to grow the diversity of the population, in all aspects, increases. In the decade between the 2001 and 2011 Censuses (the intercensal period) London's population grew by over 1 million people to 8.17 million. Over the same period the UK-born population decreased by 53,500 people and as a result the proportion of non-UK born residents in London rose from 27.1 per cent to 36.7 per cent. This growth is reflected in the range and size of London's migrant communities and the impact this has on the ethnicity and religious composition of the capital.

This report uses 2011 Census data to unpick some of the relationships between these demographic characteristics and will help policy makers, at both the regional and local level, understand the differing needs of London's diverse population groups. The data and figures contained in the report are available to download from the London Datastore ([download](#)).

The report begins by introducing the datasets that will be considered before looking in more detail at the following:

- Age structure by ethnicity
- Age structure by religion
- Age structure by country of birth
- Gender by country of birth
- Ethnicity by country of birth
- Ethnicity by religion
- Country of birth by religion
- Country of birth by passports

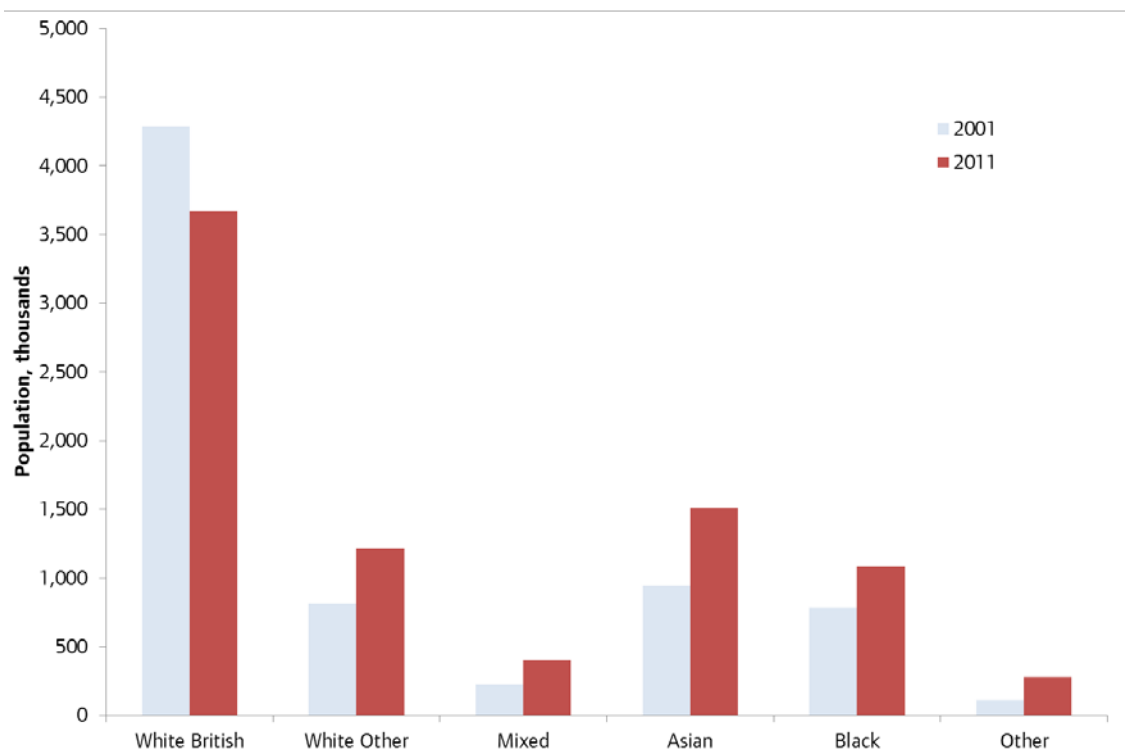
Ethnicity

Ethnicity was first included in the 1991 Census and consisted of a classification based on 10 ethnic groups. In 2001 this classification was expanded to 16 groups and then in 2011 to 18 groups. These changes make comparison between censuses difficult due to uncertainty over where those identifying in newly created groups would have placed themselves in previous years. However this being said, the data are considered broadly comparable.

Data on ethnicity are published in the following forms in the 2011 Census:

- Key Statistics table KS201EW and Quick Statistics table QS201EW contain 18 ethnic groups in five categories (White, Mixed, Asian, Black, Other)
- Quick Statistics table QS211EW contains a more detailed breakdown of ethnicity – 250 ethnicities in five categories

Figure 1: Ethnic Group populations in London, 2001 and 2011



Source: 2001 table KS006 and 2011 table KS201EW

Figure 1 shows the populations of six broad ethnic groups in London in 2001 and 2011. There were 618,600 fewer White British Londoners in 2011 than in 2001, a decrease of 14.4 per cent. All other ethnic groups increased in size over the decade but even so the White British remained the largest single group in 2011. The 'White Other' group, which contains many of the eastern European migrants who have settled in London over the last decade, increased by 402,800 people, a 49.4 per cent rise. The Mixed ethnic group saw a 79.2 per cent rise over the intercensal period (up to 179,200 residents) and the 'other' category more than doubled, increasing by 148.6 per cent to 168,000. The 'other' category includes the newly created Arab group in 2011. Residents with Arab ethnicity would have had to place themselves in a different

category in 2001 and this goes some way to explaining the large increase in the 'other' group between the two censuses.

Two GLA Census Snapshots on Ethnic Diversity in London have been produced, one at borough level [CIS2012-04](#) (Ethnic Diversity Indices) and one at ward level [CIS2012-02](#) (Ethnic Diversity Indices for wards).

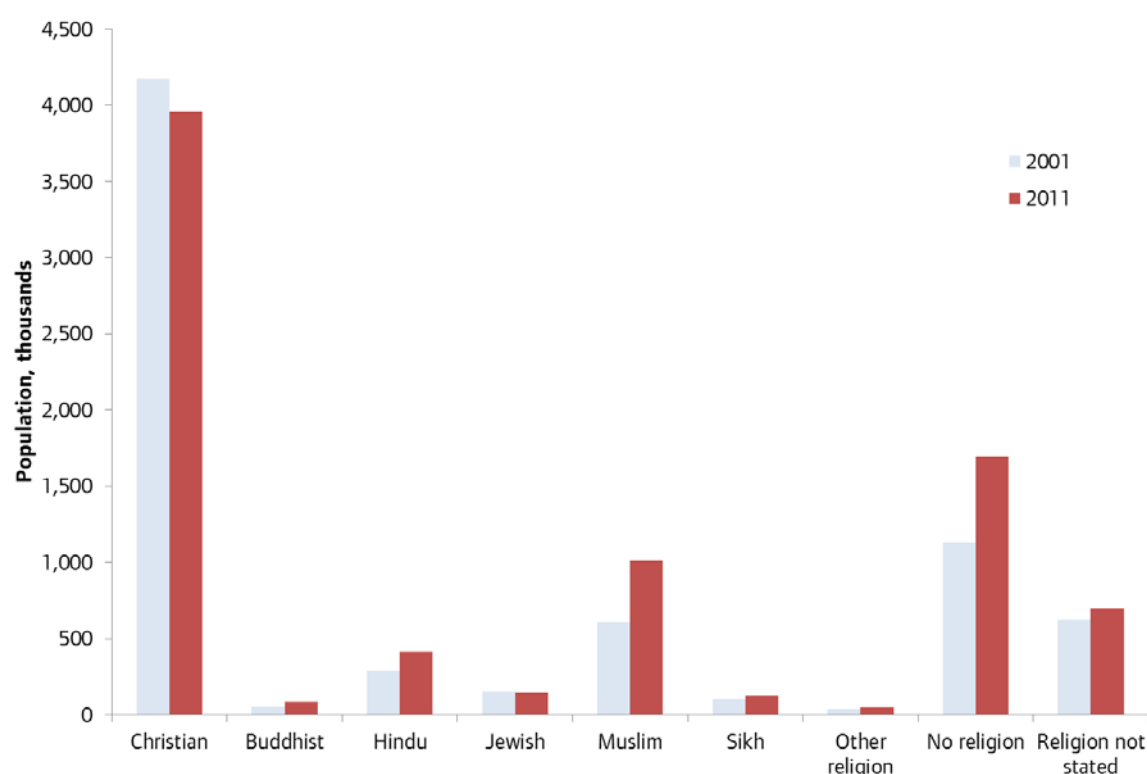
Religion

The 2001 Census was the first to include a question on religion. In both 2001 and 2011 the question was voluntary and as a result the data contain a category for 'religion not stated', as distinct from 'no religion'. There are three univariate tables containing information on religion in 2011:

- Key Statistics table KS209EW and Quick Statistics table QS208EW contain six named religious groups, and categories for 'other religion', no religion and religion not stated.
- More detailed data are found in Quick Statistics table QS210EW which breaks down the 'other religion' category into 40 separate groups and the 'no religion' category into eight.

An analysis of the data on religion can be found in GLA Census Snapshot [CIS2012-08](#) (Religion).

Figure 2: Religious group populations in London, 2001 and 2011



Sources: 2001 table KS007, 2011 table KS209EW

In 2011 5.79 million (70.8 per cent) people in London held a religious belief. Christianity was the largest religious group with 52.9 per cent of Londoners followed by Islam with (13.5 per cent) – the 2011 Census showed that Muslims in London now number over 1 million. 5.5 per cent of Londoners were Hindu (411,000 people) while 2 per cent were Jewish (148,000). Sikhs made up 1.7 per cent (126,000) of London's population and Buddhists 1.1 per cent (82,000). The most populous 'other religion' group were Jains with 15,000 followers.

Country of Birth

The 2011 Census outputs include a number of country of birth datasets at varying levels of detail.

- Key Statistics table KS203EW provides a broad regional grouping,
- Quick Statistics table QS203EW provides a more detailed account with significant individual countries listed alongside aggregate groupings for less sizeable populations.
- Quick Statistics table QS212EW (only available at local authority level) includes the detailed breakdown of 189 write-in Responses.

The data contained in these tables are reviewed in two GLA Census Snapshots: [CIS21012-05](#) (Country of Birth) and [CIS2012-13](#) (Country of birth, Passports held and National Identity).

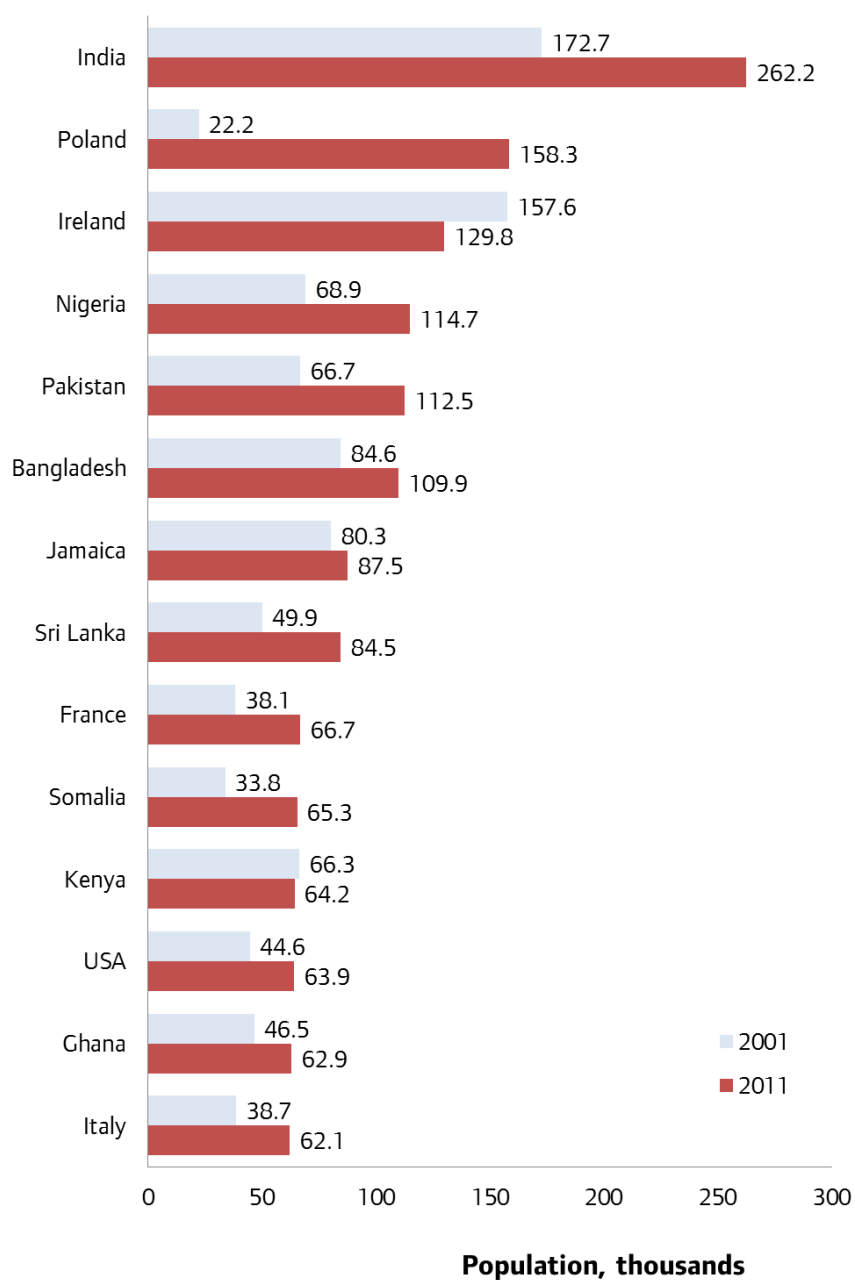
The 2011 Census showed 2.998 million people living in London were born in a country outside of the UK, equating to over one in three London residents. For England and Wales excluding London, 4.507 million persons were born outside the UK, less than one in ten.

Figure 3 shows the 14 countries which, in 2011, had populations in London greater than 60,000. The top non-UK country of birth in both 2001 and 2011 was India with 262,000 or 3.2 per cent of London residents in 2011, up from 173 thousand in 2001. There were 158,000 Polish-born London residents (1.9 per cent of all residents) and 130,000 Republic of Ireland born (1.6 per cent). Nigerian, Pakistani, Bangladeshi, Jamaican and Sri Lankan-born persons each made up over 1 per cent of London's residents.

Poland showed the greatest increase in numbers compared to 2001, up 136,000 from only 22,000 thousand, India was up 90,000 while Nigeria and Pakistan were both up 46,000. The number of Republic of Ireland-born residents in London in 2011 was 28,000 fewer than in 2001 and Kenyan-born residents were 2,000 fewer.

This report provides an analysis of the multivariate data available in the Detailed Characteristics dataset which cross tabulate the countries of birth in table QS203EW by age, sex, ethnic group, religion and passports held.

Figure 3: Country of birth of London residents (countries with more than 60 thousand residents), 2011



Source: 2001 commissioned table CO413 and 2011 table QS203EW

Passports Held

The 2011 Census was the first to ask respondents about the passports that they held. As with country of birth there is more than one univariate table in the 2011 dataset that provides detail on passports held:

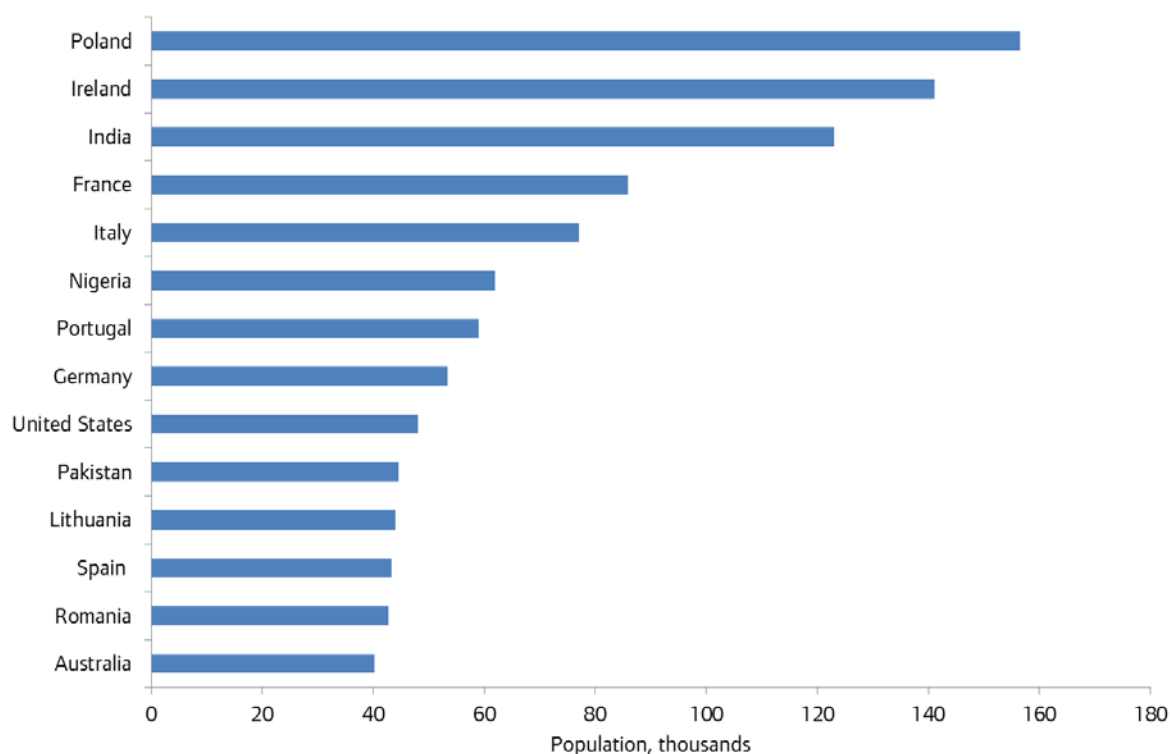
- Key Statistics table KS205EW groups passports by region
- Quick Statistics table QS212EW provides greater country-specific detail

GLA Census Snapshots [CIS2012-11](#) (Passports held) and [CIS2012-13](#) (Country of birth, Passports held and National Identity) provide an overview of these data.

This report provides analysis of the multivariate data contained in table DC2208EW, a region-level table which cross-tabulates passports held by country of birth.

There were 1.72 million London residents holding non-UK passports in 2011. Figure 2 below shows the fourteen countries for which there were 40,000 or more passport holders resident in London in 2011. Poland was the top country with 156,000 passport holders, ahead of the Republic of Ireland (141,000) and India (123,000).

Figure 4: London residents holding non-UK passports, 2011

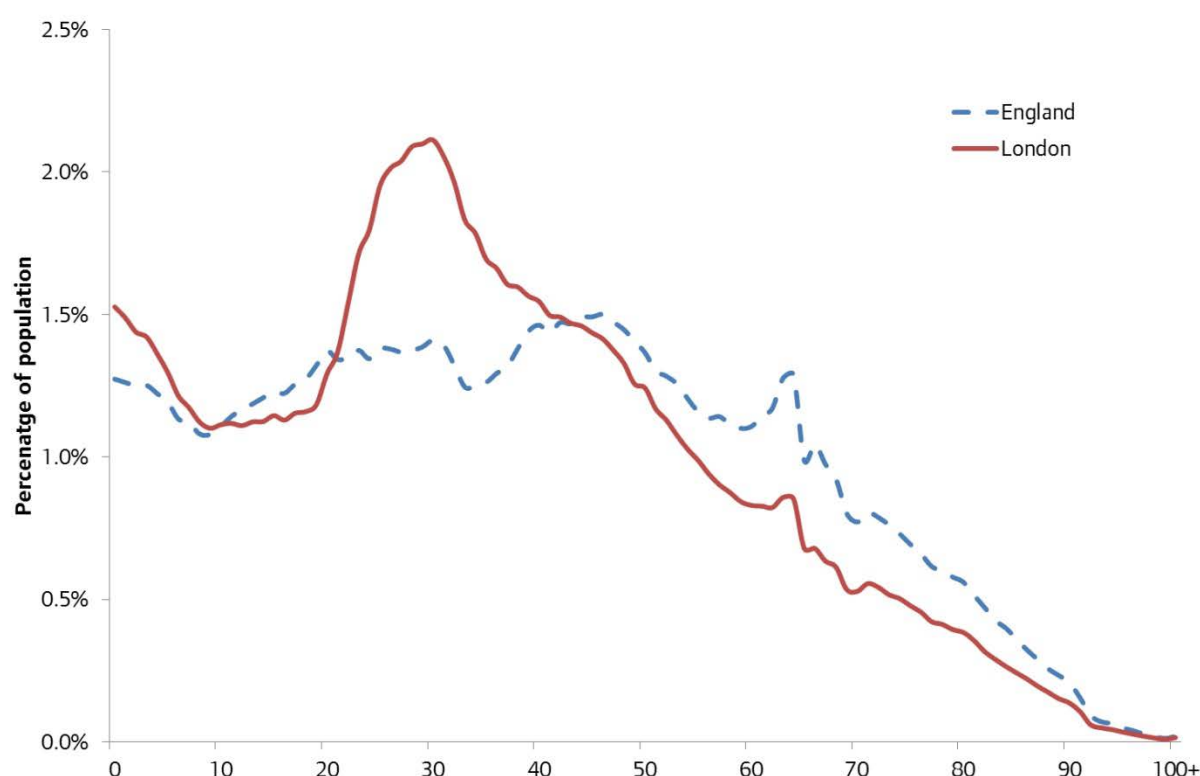


Source: Table QS212EW

Age structure

London's age structure is unique within the UK, a result of complex demographic forces. Birth and mortality rates, internal migration and international migration all have their own London-specific forms. The birth rate in London is higher than in England as a whole leading to a greater proportion of the population in the earliest years (0 to 10 years old). The stand-out characteristics of London's population however is the concentration of the population in the young adult age range (20 to 34), with correspondingly lower than average proportions over the age of 40.

Figure 5: Age structures of London and England, 2011



Source: 2011 table QS103EW

However, the average age structure (Figure 5) does not tell the entire story. There are many subtleties and variations contained within the sub-groups that together comprise London's population. The 2011 Census provides detailed age and sex data for a wide range of population groups and this report will look in turn at three different ways in which the population can be classified: ethnicity, country of birth and religion. In each case differences between the population sub-groups are compared to the London average outlined above.

Age Structure by ethnicity

Ethnicity has been recorded on the UK census since 1991 and the data available in 2011 include two new groups: Gypsy & Irish Traveller, and Arab. Figures 6 to 11 show the percentage of the population of five broad ethnic group populations against the London average:

- White British
- non-British White (including Gypsy & Irish Traveller)
- Asian/British Asian
- Black/African/Caribbean/Black British
- Arab

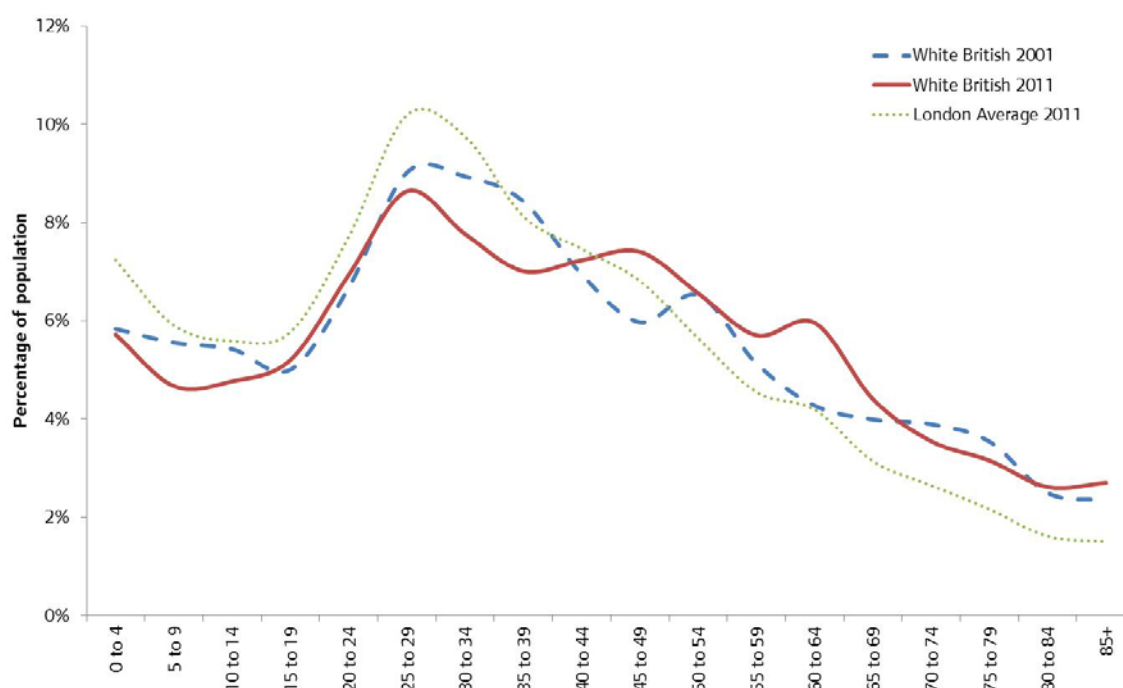
The comparison draws out the differences between the ethnic group populations and the overall London age structure by identifying those age groups where populations were under-represented (i.e. the percentage of the population in that age group was less than the London average) and those groups where they were over-represented.

White British ethnicity

The total number of London residents reporting their ethnicity as White British has fallen by 16.9 per cent over the last decade. White British and White Irish (here included below in the non-British White category) are the only ethnic groups to have seen a decrease in population since the last census.

The White British population had an older age structure than the London average. The group were under-represented in all age groups up to 45 years of age and then, in the later age groups, were over-represented. The under-representation in the younger age groups begins in the 0-4 age category suggesting a lower than average birth rate for this ethnic group. Internal migration sees the population increase somewhat in early adulthood but there is not such great concentration in the 20-39 age range as in the wider London population. Instead a smaller peak in population is sustained for a longer period (20-54) so that when population decline, due to mortality and out-migration, begins the impact is not as great. The result is that the older population of London is more likely to be White British than the younger population.

Figure 6: Age Structure of the White British population in London, 2001 and 2011



Source: 2001 table ST101, 2011 table DC2101EW

The White British population in 2011 was on average older than it was in 2001. There were comparatively fewer people in the youngest age groups and more to be found in the latter half of the age structure. The ages 15 through to 24 are relatively similar in size for the two years but between 25 and 39 there is a noticeable difference in the population with fewer White British residents in 2011. The proportion of the population beyond 40 years of age is greater in 2011.

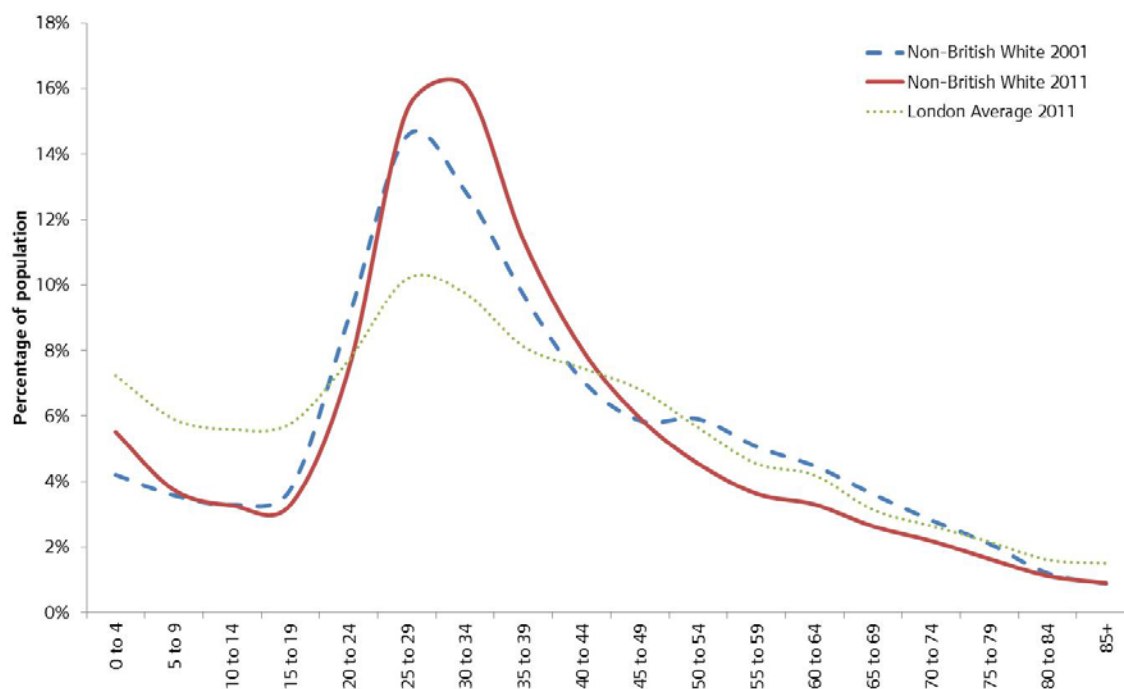
The individual London boroughs had a similar structure to the White British London average in 2011 with the main differences being the size of the peak in early adulthood. Inner London, typified in this case by the structure of the populations of Tower Hamlets and Hackney, had a pronounced peak in this age range suggesting that the White British population was more concentrated in Inner London boroughs. Outer London on the other hand had a much flatter structure with no significant peaks, this is indicative of a White British population that was slightly older and less concentrated in any specific age group. Some authorities, such as Harrow in north-west London had a dip in population in the early adulthood age bands which is compensated for by a much larger percentage of the population aged over 40.

Non-British White ethnicity

The other White ethnicities (i.e. non-British White) have a very distinct migration-driven age-structure. This group includes many European-born migrants as well as a shrinking (since 2001) White Irish population. The distinctive feature of this group is the significant concentration of the population in the age bands between 20 and 44, with a particular peak between the ages of 25 and 34. A steep decline from 40 onwards means that the population falls below the London average in older years.

The comparison with 2001 data shows that the population has become more concentrated within the young adult age bands over the last decade meaning a smaller proportion of non-British Whites are now found over the age of 49; 26.1 per cent of the population were 50 or over in 2001 while in 2011 this decreased to 20.0 per cent. Over the same period the overall non-British White population increased by 33.1 per cent.

Figure 7: Age Structure of the White non-British population in London, 2001 and 2011



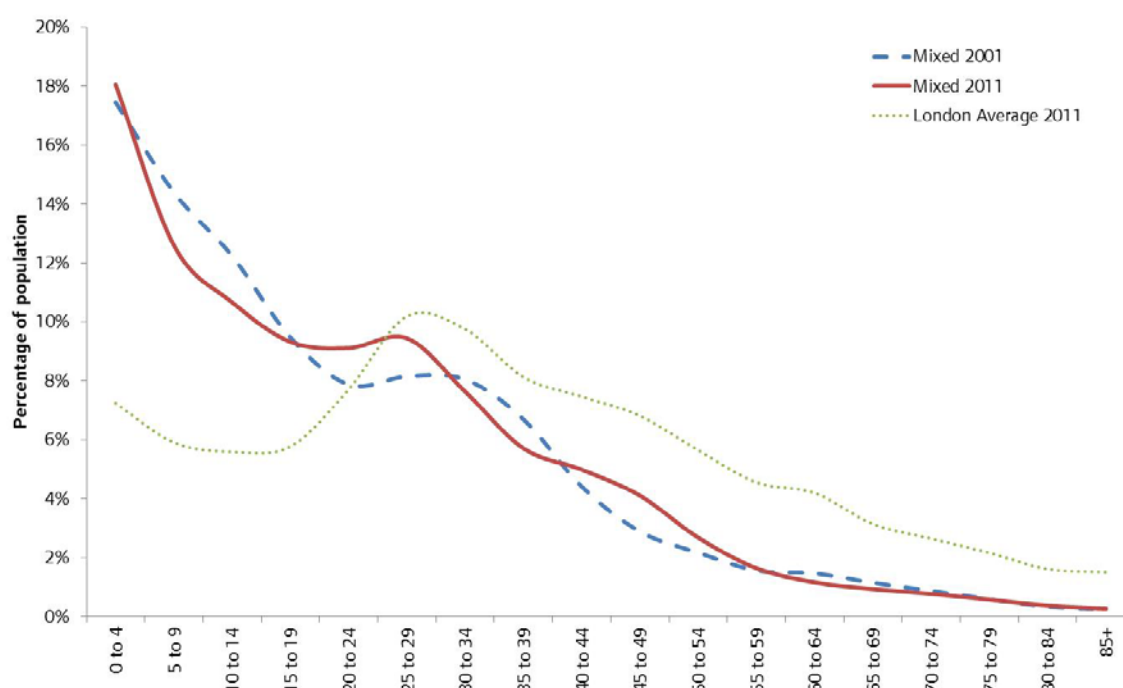
Source: 2001 table ST101, 2011 table DC2101EW

The London boroughs follow the same pattern as the overall non-British White population in Greater London, albeit varying in the extent to which the peak dominates the structure. The boroughs range between Tower Hamlets where 66.2 per cent of the population are aged 25 to 44, to Ealing where the same group account for 50.2 per cent. On average Inner London boroughs had a greater concentration in this age band than Outer London where the population was more evenly distributed.

Mixed ethnicity

The Mixed ethnicity population (which includes the sub-categories White & Black Caribbean, White & Black African, White & Asian, and Other Mixed) was a very young population. In fact, half (50.6 per cent) of the Mixed ethnicity population were aged 0 to 19 and just 8.4 per cent were aged 50 or over. This is seen on the chart (Figure 8) as a constantly descending line as each age group has a smaller proportion of the population than the one that precedes it. The only exception to this trend is the slight levelling of the age structure between the ages of 15 and 29 indicating three age groups with similar population sizes (15-19, 9.3 per cent; 20-24, 9.1 per cent; 25-29, 9.4).

Figure 8: Age Structure of the Mixed ethnicity population in London, 2001 and 2011



Source: 2001 table ST101, 2011 table DC2101EW

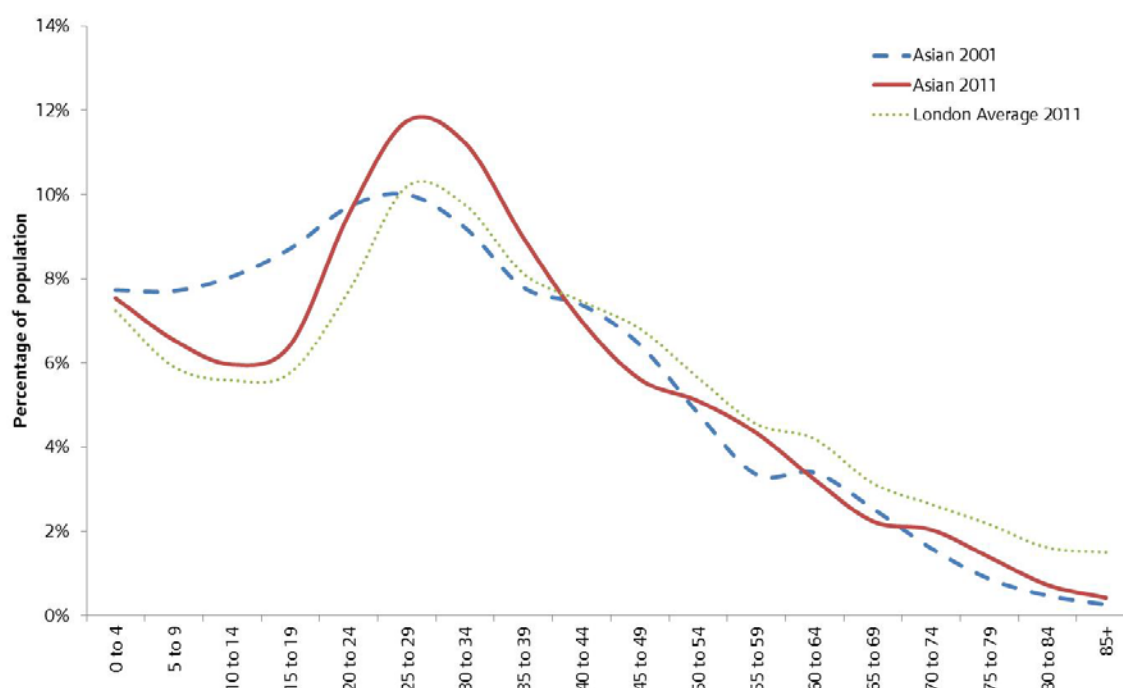
Compared to 2001 the age structure in 2011 shows a slightly higher proportion of the population were found in the 19 to 29 age range at the expense of the proportion in the youngest ages. Mixed ethnicity is the second fastest growing ethnic group in London, up 79.2 per cent since 2001 and has the youngest age profile of any ethnic group.

Asian/Asian British ethnicity

The Asian population had an age structure which forms almost a mirror image of the White British population: a slight over-representation in the younger age groups is followed by an under-representation in older groups. This group contains both UK-born and non-UK-born Asians (drawn from a wide geographic area including, among others, India, Pakistan and China) and will therefore include characteristics of international migrants as well as those of internal migrants and longer-term resident communities.

In 2001 Chinese ethnicity was included in the 'other ethnicity' group while in 2011 it was included under Asian ethnicity. For the purposes of comparison the Chinese population has been added to the Asian group for 2001. In 2001 this population had a much less marked peak between the ages of 20 and 35. In 2011 this 15-year age band accounted for 32.5 per cent of the population while in 2001 it made up 28.9 per cent. This increase in young adults is mirrored by a decrease in the younger population since 2001. This decrease is in line with the trend seen in the London average for a falling population over the first age cohorts before a young adult peak begins.

Figure 9: Age Structure of the Asian population in London, 2001 and 2011



Source: 2001 table ST101, 2011 table DC2101EW

At the local authority level there is some variation in the age structure of this population. Inner London as a whole has a more pronounced peak at the 20 to 34 age band indicating a slightly younger population than in London as a whole. This is followed by a steep decline in population over older age groups. Individual boroughs in Inner London, including Newham and Islington, have an even more pronounced peak in this young adult age group. Outer London by contrast has a less pronounced peak which occurs later (age 25 to 34). In addition the decrease in population in older age groups is not as marked as in Inner London. All of the boroughs in Outer London display these characteristics and range between Barnet which has the flattest age structure through to Barking & Dagenham which had a structure most like the inner boroughs.

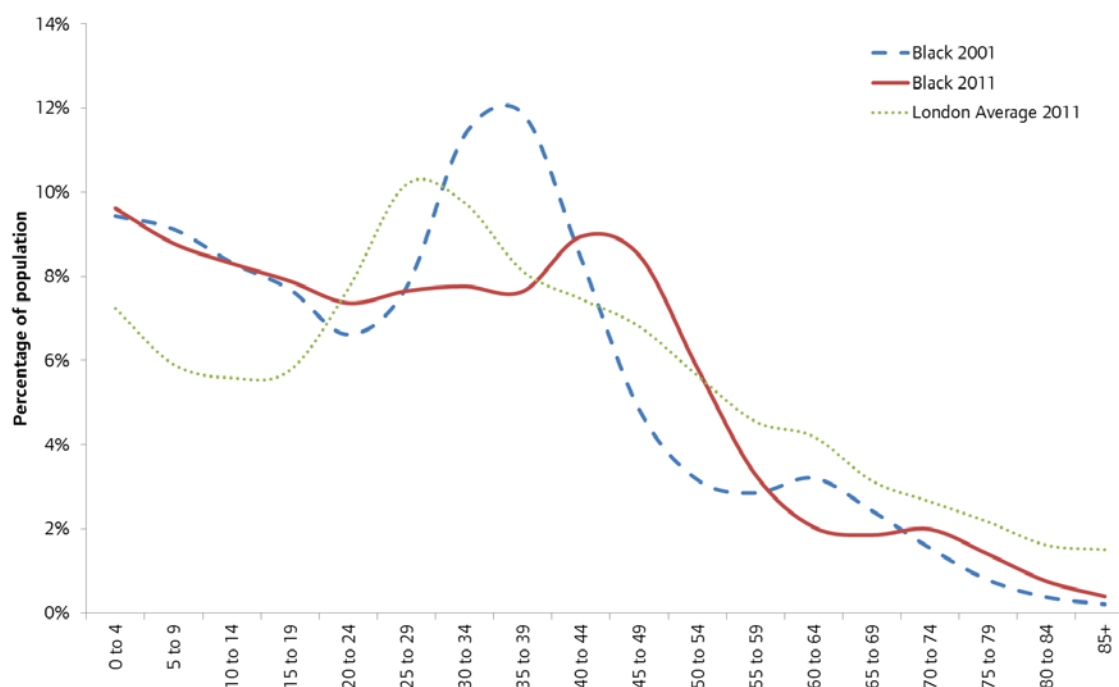
Black/African/Caribbean/Black British ethnicity

The black population of London had a very distinctive age structure quite unlike the other ethnic groups. The proportion of children was especially high and the numbers seen in the older age groups particularly low indicating that black Londoners were more likely to be young than old. In the adult age groups the peak seen in other ethnic groupings, between 20 and 39 years of age, was not seen here, instead there was a much more even population over the ages 0 to 49 with a slight peak at 40-49 years of age. The decline in population after 50 years of age is significant and immediate. This group includes individuals from geographically diverse areas (UK, Africa, the Caribbean) meaning that the overall structure is likely to be the result of the varied characteristics of different groups.

The structure of the black population in 2011 was quite different from that in 2001. The 2001 age structure was typical of a London population with a young adult peak followed by a gradual decline. However, in 2011 the peak was reduced and had aged on by ten years. This, allied with

an increase in population in the 40 to 59 age groups from 19.3 per cent in 2001 to 26.6 per cent in 2011, signifies an overall ageing of the population.

Figure 10: Age Structure of the Black population in London, 2001 and 2011



Source: 2001 table ST101, 2011 table DC2101EW

The Inner London and Outer London population structures are remarkably similar, much more so than in any of the ethnic groups discussed previously. Many of the individual boroughs also exhibit a population with an age structure very similar to the average for this ethnic group. There is of course some variation between local authorities and some of the more notable boroughs are:

- Tower Hamlets and Greenwich with earlier peaks signifying younger populations
- Richmond upon Thames and Havering with pronounced peaks in the 40-49 range meaning a more concentrated population in this age group
- Brent and Harrow with a peak in the very young and a decrease in the early adult years.

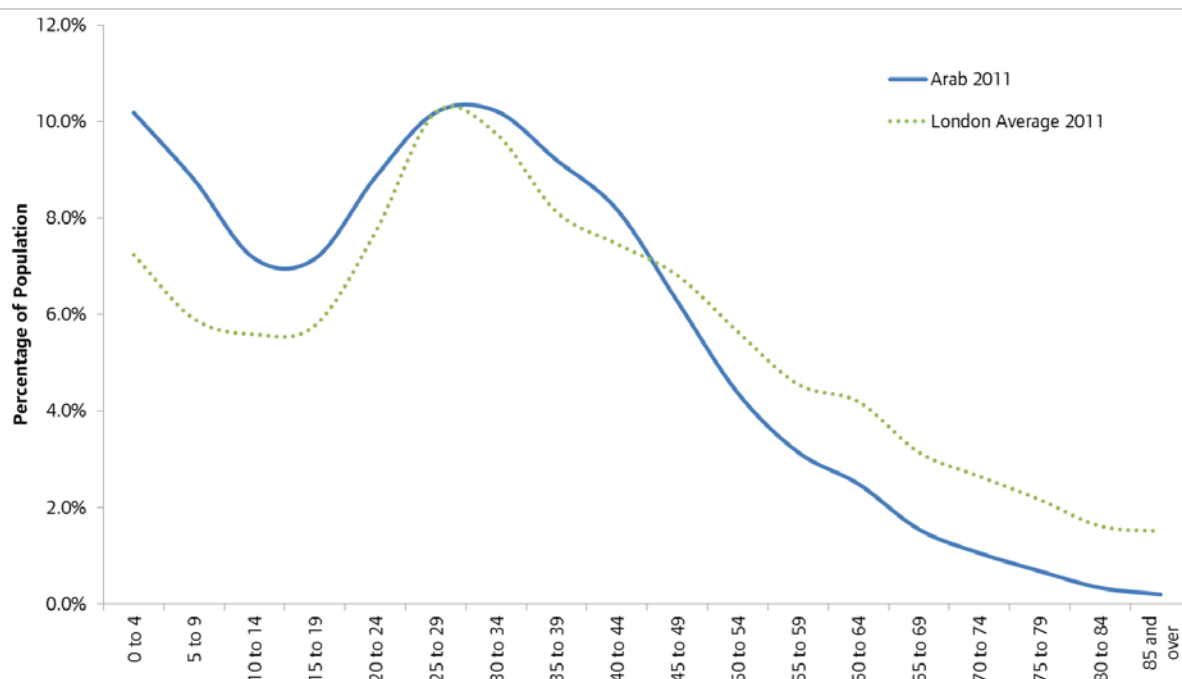
Two boroughs stand apart from the rest of London and had black populations with unique age structures. The first, Hillingdon, peaks in the 0 to 4 group and then steadily declines until 45 to 49 when the decline accelerates. This authority therefore has a very young black population. The second, Kingston upon Thames, has a significant peak at 20 to 24 which accounts for 15.1 per cent of the population, twice the amount of any other age group in the borough. A peak in this age group usually signifies the presence of a large migrant community, both from within the UK and outside.

Arab ethnicity

For the 2011 Census 'Arab' was one of two additional ethnicity options added to the questionnaire. Therefore, it is not possible to compare these responses to the 2001 Census, as

there is no clear indication of where residents identifying as Arab in 2011 would have identified in 2001. The 'Other ethnicity' category, into which Arab falls, has risen the most out of all of the ethnic groups since 2001 (148.6 per cent increase), however this is almost certainly an artefact caused by the creation of the Arab group and their responses being directed here rather than spread across other ethnicities as they were in 2001.

Figure 11: Age structure of the Arab population in London, 2011



Source: 2011 table DC2101EW

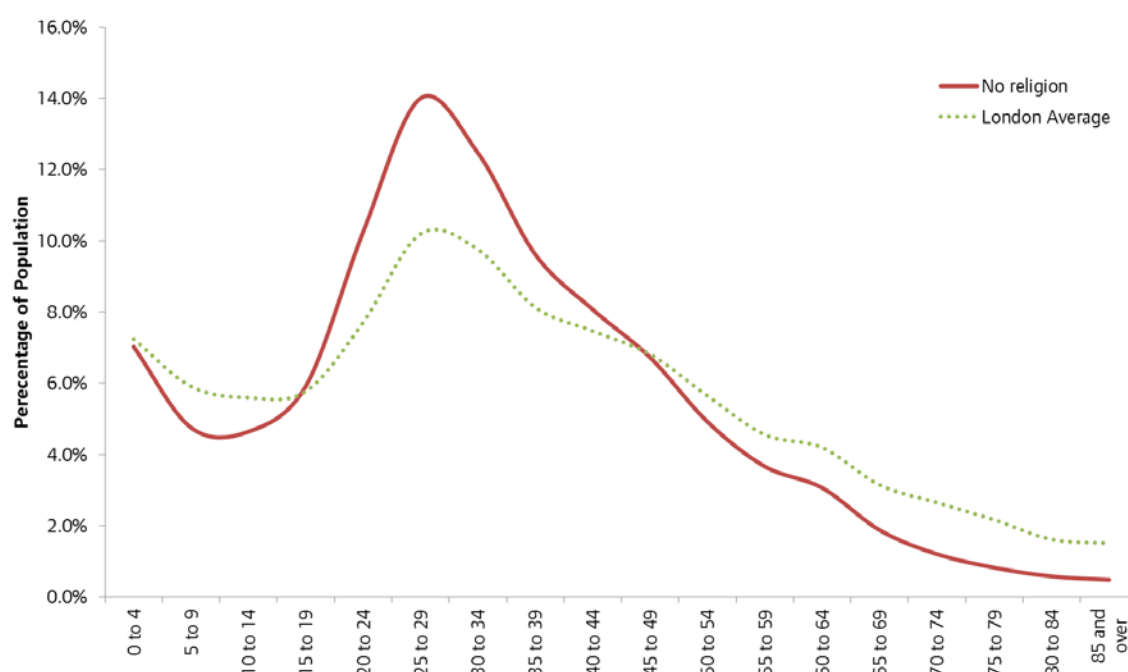
The Arab population displays characteristics typical of the London population, the main difference being that the Arab group is younger. A greater proportion of the population were aged 0 to 49 than in London as a whole (86.2 per cent compared with 74.5 per cent) and correspondingly there were proportionally less Arab residents over 50 years of age than in London as a whole. The peak in the Arab population was also wider than that seen for London; covering ages 20 to 44 as opposed to those aged 20 to 39 for London. Over the age of 50 the population declines at a much more rapid rate than the overall London average.

Age structure by religion

Most of the religious groups on which the census reports had age structures which, to varying degrees, reflect the London average. That is, an initial peak in the 0-4 year group followed by a dip between 5 and 19, a steep increase to a peak between 29 and 44, and a gradual decline from 45 onwards. The variation seen between different religious populations is found in the significance of the early-adult peak and its related impact on the size of the population in the older groups.

Those with no religion have the most pronounced peak (a more significant proportion of the population is in the age range 20 to 39 than any other). This is a very young population with 59.0 per cent under the age of 35 and 36.7 per cent between the ages 20 and 34. This is compared to the wider London population where 52.1 per cent are under 35 and 27.6 per cent are between 20 and 34 years of age.

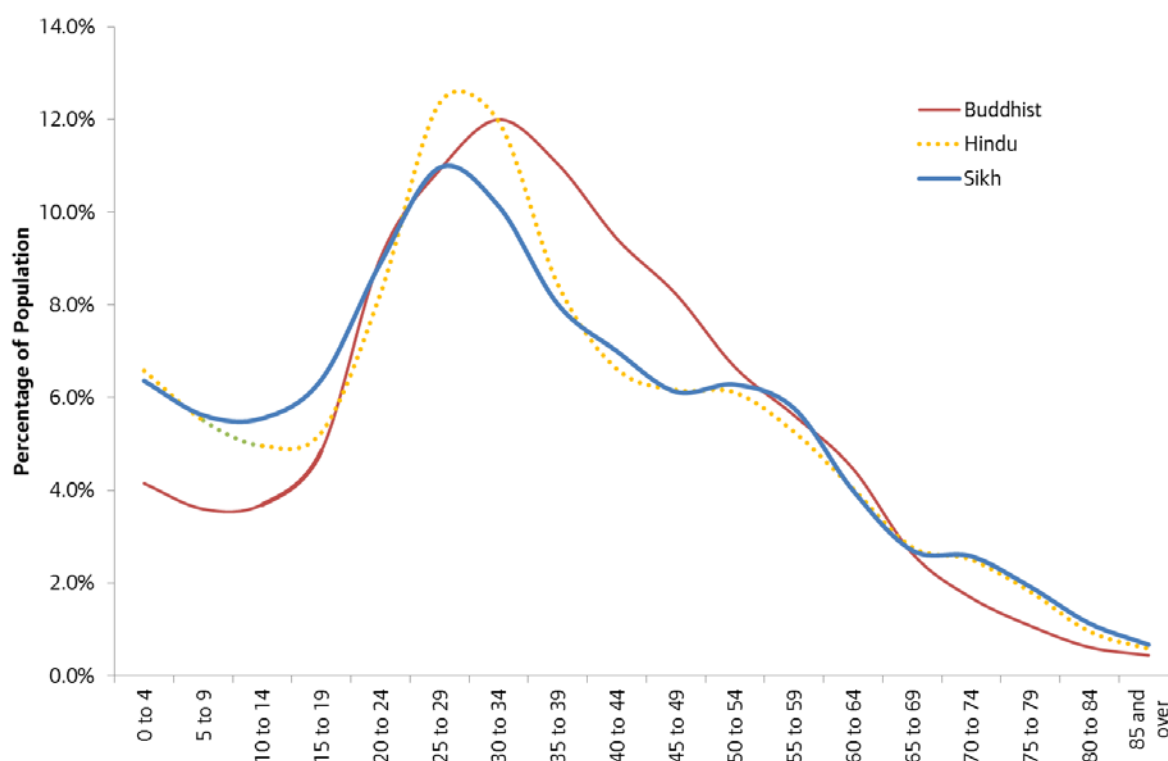
Figure 12: Age structure of residents with no religion in London, 2011



Source: 2011 table DC2107EW

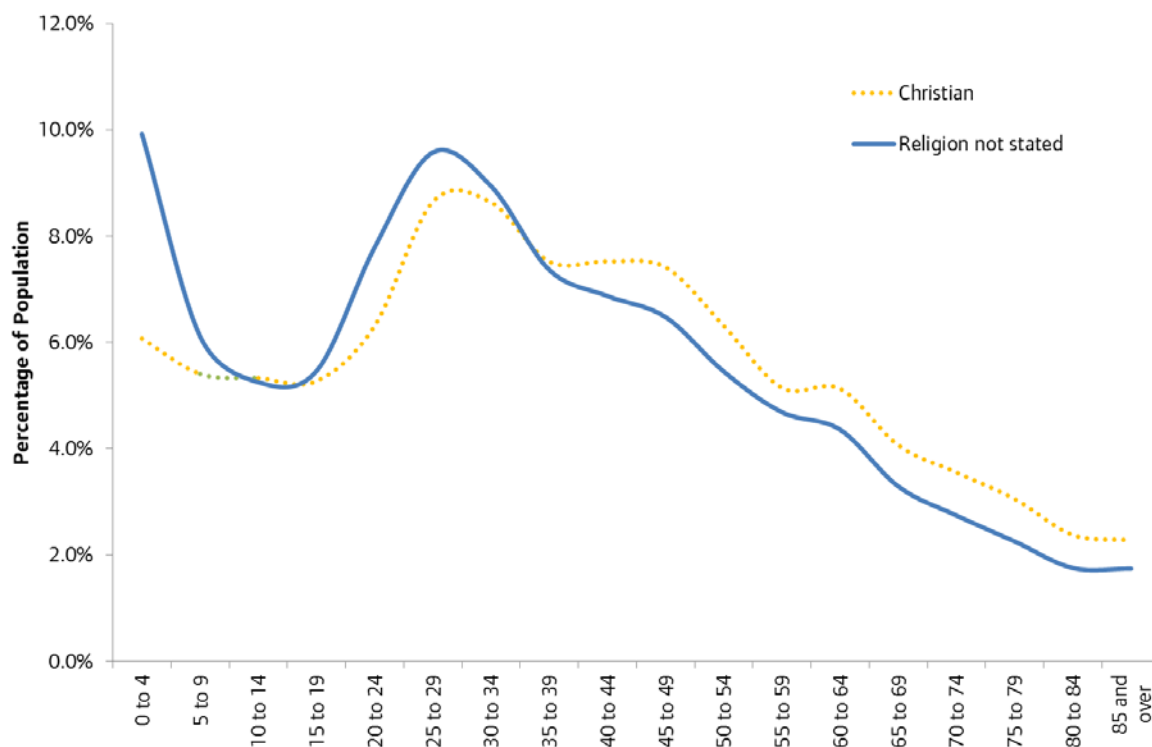
Significant peaks are also seen for London's Hindu and Buddhist populations. Census data describes a strong relationship between religion and country of birth, specifically the data shows that 68.5 per cent of Hindus and 71.7 per cent of Buddhists living in London were born outside the UK. These religious communities are therefore in large part also migrant communities and, as is shown by the country of birth by age data (below), migrant communities tend to have a younger age profile than the indigenous population. The age structure of these religious groups is therefore a function of their demography rather than any particular propensity for young Londoners to favour particular religions over others. The Sikh population in London is also a younger than average population, although to a lesser extent, and once again this is driven by the proportion of migrants within London's Sikh population (50.2 per cent).

Figure 13: Age structure of the Buddhist, Hindu & Sikh populations in London, 2011



Source: 2011 table DC2107EW

Figure 14: Age structure of the Christian & 'Religion not stated' populations in London, 2011

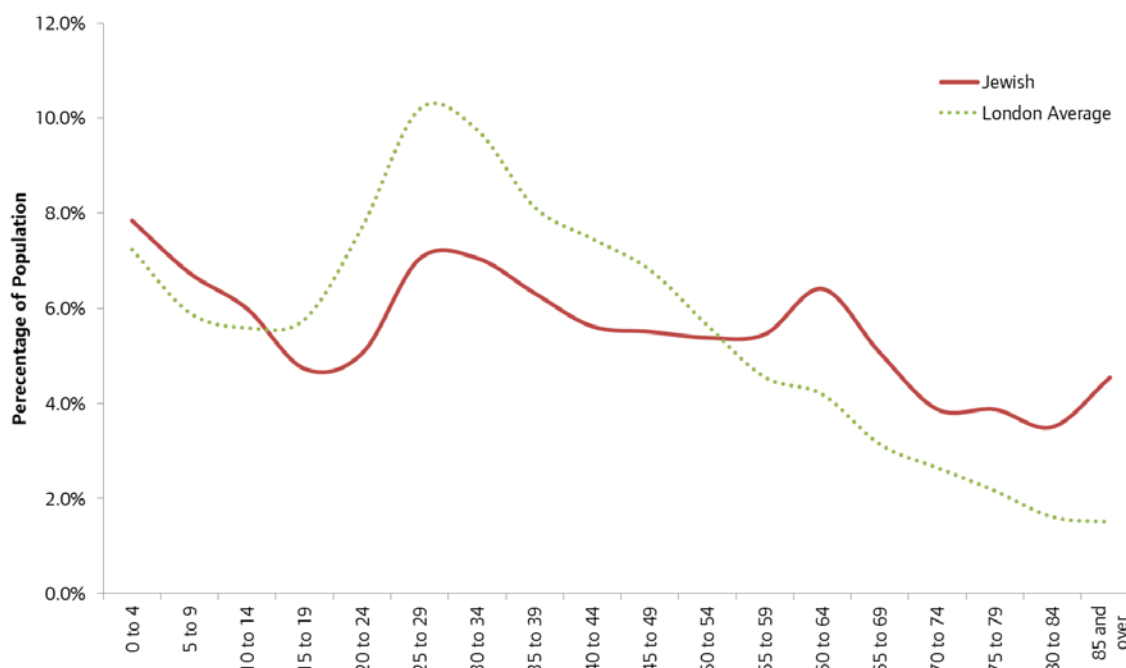


Source: 2011 table DC2107EW

The two lowest peaks are the 'religion not stated' and Christian groups (Figure 14). These are also the two groups with the highest proportions of UK-born residents. The UK-born population in London is greater in the older age groups and less concentrated in the young adult groups, characteristics which are visible in the 'religion not stated' and Christian populations.

The Jewish, Muslim and 'other religion' groups all follow age structures which are different from the London average.

Figure 15: Age structure of the Jewish population in London, 2011



Source: 2011 table DC2107EW

The Jewish population was more even than the London average with a range of just 4.3 per cent between the age group with the highest percentage of the population and the group with the lowest (the range for London as a whole is 8.2 per cent). The Jewish population was much older than the general population with Judaism under-represented between the ages of 15 and 54 and then over-represented in the older age categories.

Figure 16: Age structure of the Muslim population in London, 2011

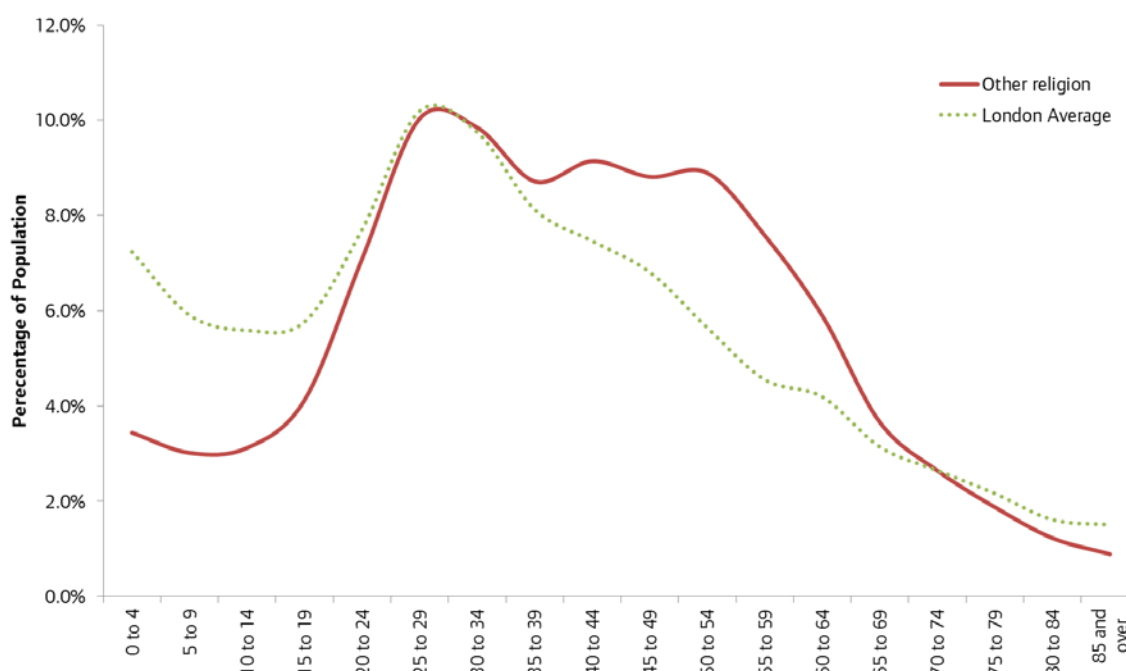


Source: Source: 2011 table DC2107EW

The Muslim population in London was more concentrated in the very young age groups than the London average. This group were heavily over-represented between the ages of 0 and 24, had a comparable proportion of their population in age range 25 to 39 to the London average, and were under-represented from age 40 onwards.

As was the case with the Hindu, Buddhist and Sikh populations a significant proportion of the Muslim population in London are non-UK-born and, as has already been suggested, the existence in significant numbers of migrants within any population group will tend to impact on the age structure of that group. However, while the Hindu and Buddhist groups in particular are comprised of a large majority of foreign-born Londoners, the Muslim group is much more diverse with a significant UK-born element in addition to its migrant communities. This would account for the complex nature of the age structure of the Muslim population: a high proportion in the very young groups as migrants form families after arrival followed by the peak and decline characteristic of migrant groups but tempered by the presence of UK-born residents.

Figure 17: Age structure of the 'other religion' population in London, 2011



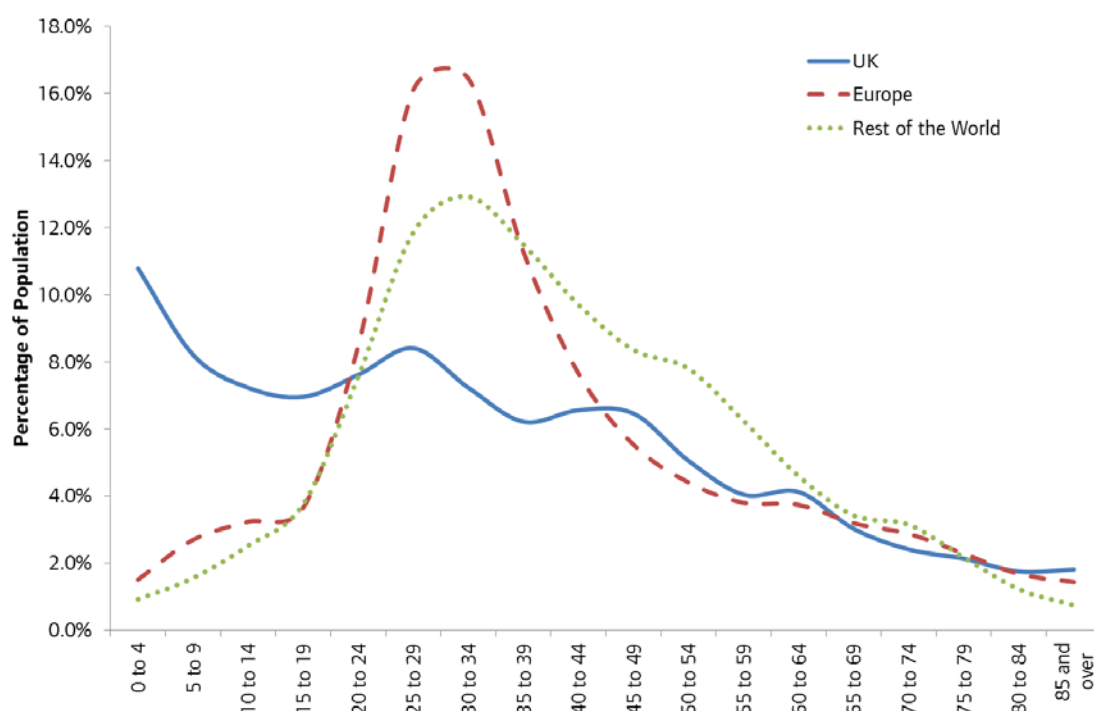
Source: Source: 2011 table DC2107EW

The final group to consider is the 'other religion' category. These residents stated they had a religion other than the main six religions outlined on the census form and in the data. There were 48,970 people in London in 2011 who stated they had an 'other religion', among them 15,000 Jains and 4,900 Pagans.

The age structure here was different from all others in that these groups are heavily under-represented in the youngest age categories while their largest populations occur in adulthood particularly, and uncharacteristically for London, in later adulthood, with a sustained and significant proportions in the age groups between 25 to 59 and a greater than average population up to 74 years of age. In fact, 55.3 per cent of those with an 'other religion' in 2011 were aged 25 to 74, compared with 42.6 per cent in the overall London population.

Age structure by country of birth

Figure 18: Age structure by region of birth in London, 2011



Source: 2011 table DC2103EW

The data on age structure by country of birth are available at London level in five-year age groups and are disaggregated here by region (UK, Europe, and the rest of the world).

Between the ages of 0 and 20, the migrant groups (those born in Europe and the rest of the world) were relatively underrepresented. This is largely because migrants will often wait until after their move to start families and so are less likely to travel with children. This trend contributes to the high percentage of the UK-born population in this first age bracket as any children born to migrants are counted in the UK-born total.

The 20 to 24 age band covers, among others, students in full-time education. London is an educational draw both from within the UK and from abroad and is a net importer of students. The three regions of birth assessed here all had similar percentages of their populations in this age group.

The UK-born population then saw a slight upturn in population as the post-university migration of young adults from within the UK makes a mark. From 30 years of age onwards the proportion of the UK-born population in each subsequent age group declines as people either move away from London entirely or continue to work in the capital but live in the surrounding counties and commute.

The rest-of-the-world population sees a sharp increase in population from age 20 up to 29 as migrants come to London for both education and employment. Over half (53.5 per cent) of all Londoners born outside Europe are between the ages of 20 and 44. There follows a steady

decline as economic migrants either return to their country of origin or move out of London to the surrounding areas, however there remains a significant population of non-European-born Londoners in the older age groups, particularly when compared to the UK-born and European-born population. 36.7 per cent of this group were between the ages 40 and 64 while among the UK-born population the proportion was just 26.2 per cent. This over-representation in later years may be due to economic constraints on individual's ability to move allied with an unwillingness to leave a community and location which may represent the only place in the UK the migrant has known.

European migrants had a similar age structure to the non-European-born migrant population but with an even greater proportion in the early to middle years of adulthood (20 to 44). This concentration accounted for 66.0 per cent of all European-born migrants living in London in 2011. Following the ten-year peak between 25 and 34 there is a sharp decline in the number of European-born residents with proportions falling below those of the UK-born residents by age 40. There remains a small population who maintain their London residency into retirement and old age.

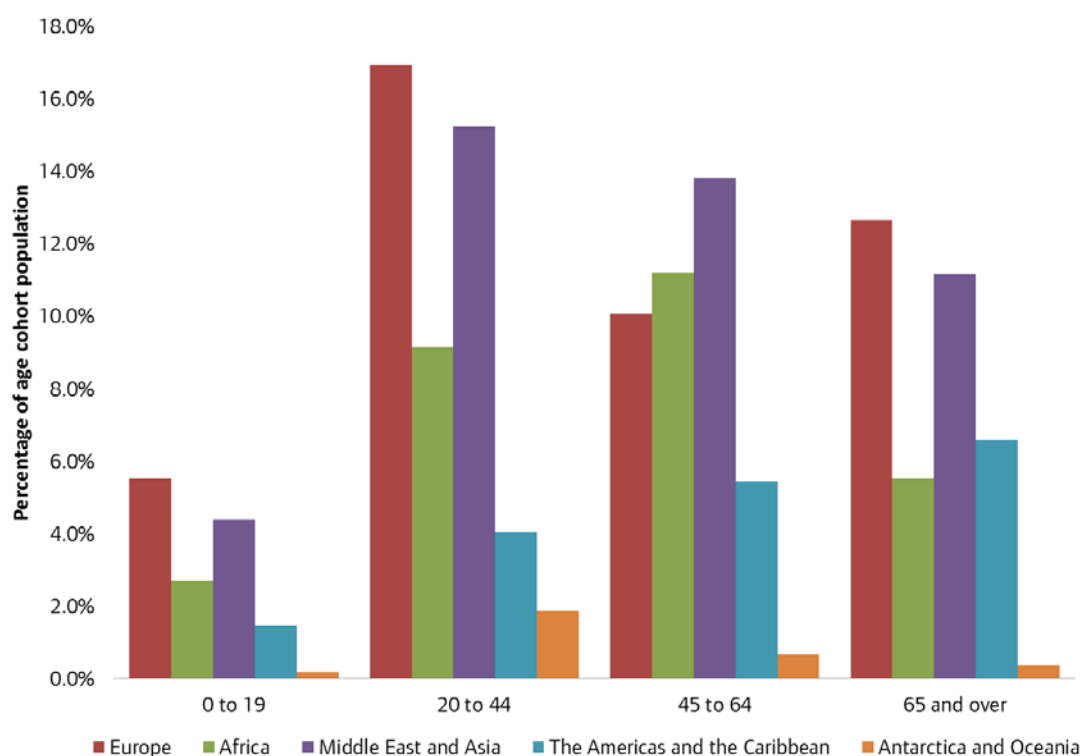
The result of these varying age structures can be seen in Table 1 and Figure 19. The data displayed in Figure 196 do not include the UK as the high proportion of UK-born residents in London would distort the axis and make changes in the other groups difficult to discern. The data are the proportion of residents within an age cohort who were born in one of six regions and so show how the demographics of London vary according age.

Table 1: Proportion of London residents born in the UK for four age cohorts, 2011

	0 to 19	20 to 44	45 to 64	65 and over
UK-born population	85.7 %	52.8 %	58.8 %	63.7 %

Source: 2011 table DC2107EW

Figure 19: Proportion of residents by non-UK country of birth for four age cohorts, 2011



Source: 2011 table DC2107EW

Note: Europe does not include UK

In the earliest age group (0 to 19) UK-born residents accounted for 85.7 per cent of the population. However by the next age category (20 to 44), which is the period of highest migration, just 52.8 per cent of Londoners were born in the UK. In this age group 16.9 per cent were European born, 9.1 per cent were African born and 15.2 per cent were born in the Middle-East & Asia.

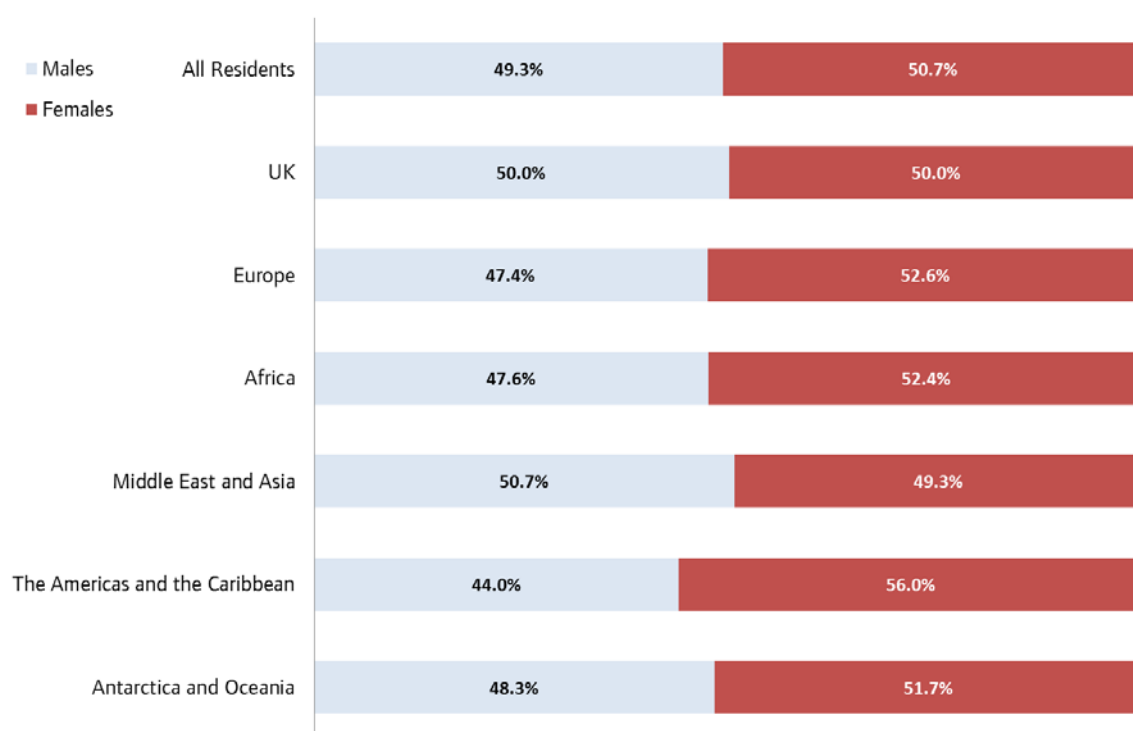
In the next age cohort, 45 to 64 years of age, the proportion European migrants is much lower as this group begin to leave London and the UK. European migrants in this age group accounted for just 10.1 per cent of the total population. The African migrant group still has high numbers and in fact this age band has the highest proportion of African-born residents (11.2 per cent).

In the oldest category (65+) UK-born Londoners again make up a more significant majority of the population, although at 63.7 per cent not as high as the earliest years. The African-born population has dropped to 5.5 per cent, below the Americas and the Caribbean with 6.6 per cent. European migrants and Middle-East & Asia migrants maintain a relatively stable proportion of the population across the three later age bands with 12.7 per cent and 11.2 per cent respectively in the final age cohort.

Gender by country of birth

Data on the size of the male and female populations shows the overall population of London is well balanced with 49.3 per cent males and 50.7 per cent females (104,500 more females than males in a population of 8.17 million). The ratios of males to females for six main regions of birth are shown below.

Figure 20: Ratio of males to females by region of birth, London residents, 2011

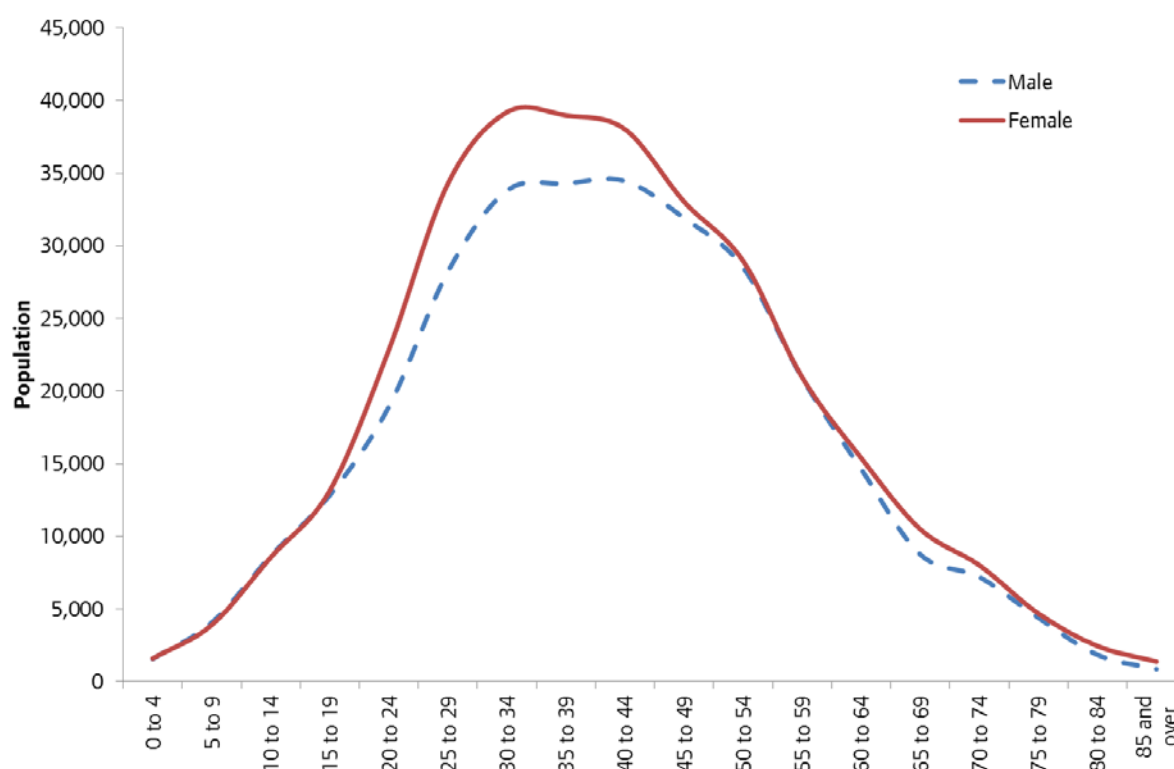


Source: 2011 table DC2107EW

The data shows that the UK-born population is the most equal (in a population of 5,175,677 there is a difference of just 3,135 more males than females).

Within the migrant community the expectation that there would be a bias towards males fails to hold true. Instead, with the exception of those born in the Middle East and Asia, every non-UK-born group had a female majority. Within the American/Caribbean born population the difference is greatest with 12.0 per cent more females than males. Figure 21 shows the age structure for males and for females for Londoners born in Africa and demonstrates a relationship typical of that seen in the Europe-born and American/Caribbean-born migrants.

Figure 21: Male and female age structure of African-born Londoners, 2011



Source: 2011 table DC2107EW

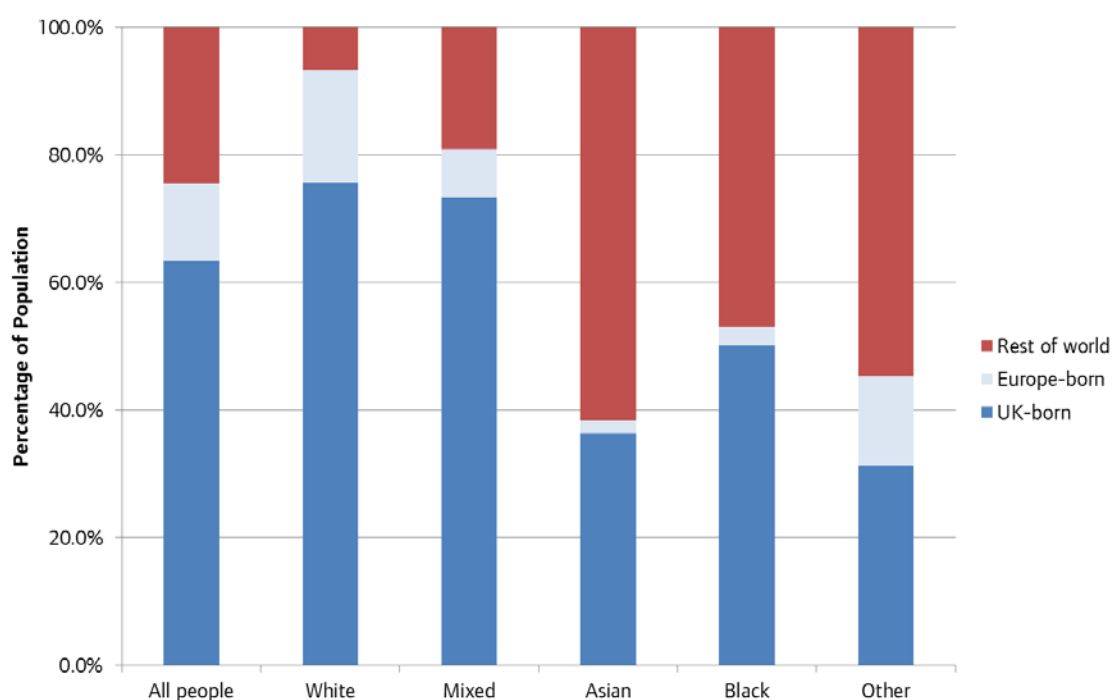
Males and females were present in equal numbers in the earliest years (before migration begins in earnest). However, once the period of high migration begins the difference between the number of females and males begins to increase. There were more women than men in all of the most populous migrant age groups (20 to 44). From 50 onwards the number of females fell back so to a more equal ratio, however there remained slightly more women than men throughout the older age groups as well.

The only region not to follow this pattern is the Middle East and Asia where males outnumber females in all cohorts from 0 to 59 years of age. After 60 years of age women are more numerous. The result is an overall bias of males in this group but by less of a margin than females outnumber males in the other migrant categories.

Ethnicity by country of birth

The cross-tabulation of census variables allows for a much greater understanding of populations and communities. Understanding how ethnicity relates to country of birth provides yet more detail into the diversity of the population shifting the data from single-attribute to multi-dimensional. Figure 22 outlines, for five ethnic group populations living in London, the percentage who were born in the UK, in Europe (not including the UK) and in the rest of the world.

Figure 22: Country of birth by broad ethnic group, London residents, 2011



Source: 2011 table DC2205EW

Of London's 8.17 million inhabitants, 63.3 per cent were born in the UK, 12.2 per cent were born in Europe and 24.5 per cent were born elsewhere. As would be expected these proportions vary significantly when the ethnic group of respondents is taken into account.

White ethnicity

The white population in London is overwhelmingly UK-born: of the 4.9 million Londoners who are white, 3.7 million (75.6 per cent) were born in the UK. Of those who are White British 94.9 per cent were born in the UK. Two thirds of those identifying as Gypsy or Irish Traveller were born in the UK while just 15.0 per cent of those who said they were 'white other' were UK-born. At local authority level the proportion of white residents who were UK-born ranges from 95.0 per cent in Havering to 53.6 per cent in Kensington & Chelsea.

A separate consideration is the proportion of London's UK-born population that identified as having White ethnicity. Overall, 71.4 per cent of UK-born Londoners had White ethnicity and

67.1 per cent identified as White British. The country of birth of the white population varies considerably across London. In Inner London the white population is more likely to be born outside the UK (36.3 per cent) than in Outer London (28.9 per cent).

Mixed ethnicity

The Mixed ethnic group also had a significant UK-born majority. Of this group, numbering 405,300 in total, 73.3 per cent were UK-born. 19.1 per cent of those with Mixed ethnicity were born outside Europe while just 7.6 per cent were born within. After the UK the highest contributing region to the Mixed ethnic group was the group of EU countries which were members in 2001¹. This is followed by North America and the Caribbean and thirdly Central & South America. Ninety per cent of Londoners who reported their ethnicity as 'Mixed: White and Black Caribbean' were born in the UK.

As with the white population there were significant variations among the London boroughs. In Westminster 58.2 per cent of those with a Mixed ethnicity were born in the UK, a figure which rises to 80.9 per cent in Redbridge. Inner London (29.7 per cent) was more likely to contain non-UK born people of Mixed ethnicity than Outer London (24.0 per cent) but the margin here is not as great as in the white population.

Asian/Asian British ethnicity

India, Bangladesh and Pakistan were the first, third and sixth largest contributors to the non-UK born population in London. The Asian group is just over a third (36.3 per cent) UK-born while 61.6 per cent (930,900 people) in this group were born outside Europe. 71.4 per cent of residents born in Southern Asian countries stated their ethnicity as Indian, Bangladeshi or Pakistani. Half of those (49.9 per cent) who stated their ethnicity was Bangladeshi were born in the UK, while for Indian ethnicity the proportion drops to 37.8 per cent.

At the local authority level Kensington & Chelsea was the borough with the greatest proportion of Asian residents born outside the UK (77.8 per cent of the Asian population) while in Newham, which had the largest overall Asian ethnic group population, 63.1 per cent were non-UK-born. The difference between Inner and Outer London is negligible (less than one per cent difference in the proportion of Asians who were UK-born). The largest proportion of UK-born Asian residents was 46.8 per cent in Tower Hamlets meaning that in every London borough the non-UK born Asian population outnumbers the UK-born Asian population.

Black/Africa/Caribbean/Black British ethnicity

The black population was 50.1 per cent UK-born and 47.0 per cent born outside Europe. This group includes many established migrant communities as well as newer and more transient communities. The main areas of origin for non-UK born black Londoners are Central & Western Africa, North America & the Caribbean and South & Eastern Africa. Of those who stated their ethnicity was Caribbean 60.9 per cent were UK-born, while in the 'Other Black' category 70.2

¹ Austria, Belgium, Denmark, Finland, France, Germany, Greece, Republic of Ireland, Italy, Luxembourg, Netherlands, Portugal, Spain, Sweden.

per cent were UK-born. The proportion of black residents born in the UK does not have any particular spatial distribution and there is little difference in the proportion in Inner London compared to Outer London. In Inner London 50.3 per cent of black residents were UK-born while in Outer London the proportion is 50.0 per cent. The black population of the various local authorities in London ranges from 42.5 per cent UK-born (Kingston upon Thames) to 57.3 per cent UK-born (Croydon). There 16 boroughs in London with a majority UK-born black population and 17 with a majority non-UK-born black population.

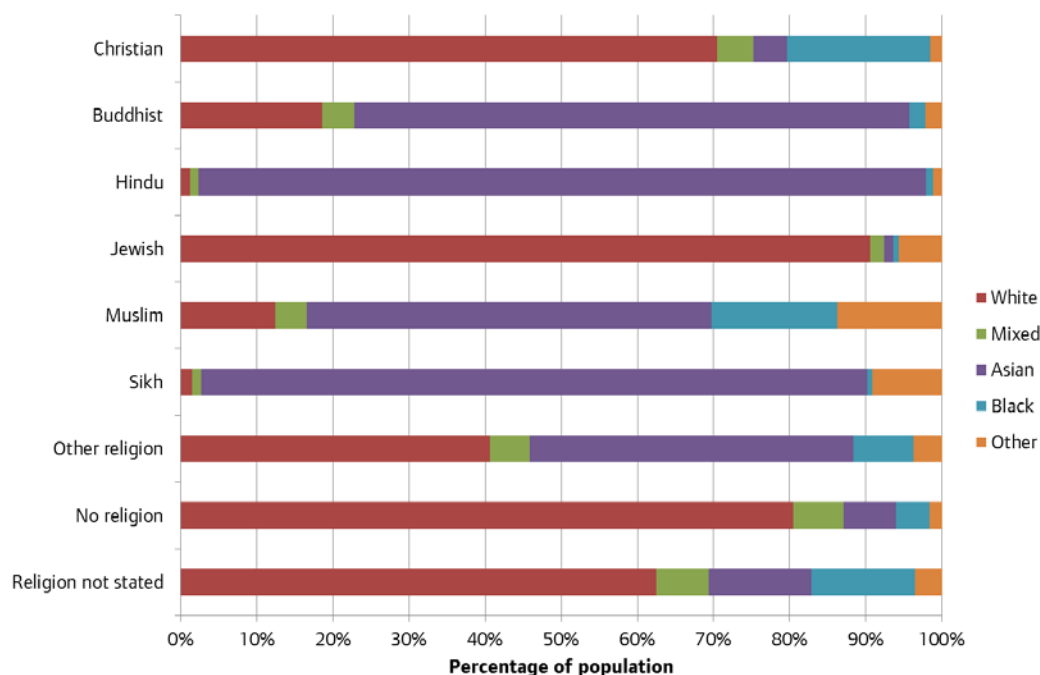
Other ethnicity

The 'other' ethnic group category, which includes Arab and those not classified elsewhere, was the only other group with a minority UK-born population. 31.3 per cent of this group were UK-born while over half (54.6 per cent) were born outside Europe, the main origin areas being the Middle East, North Africa and Central & South America. At borough level both Lambeth and Southwark had non-UK born populations which exceeded 90 per cent of the total for the 'other' ethnic group in their area. The highest percentage of UK-born people with 'other' ethnicity were found in Redbridge (44.0 per cent). This is also the only category, apart from white, in which a notable proportion of the population were European-born. Five authorities had European-born born populations that exceed 20 per cent of the total for this group with the largest in Enfield (32.4 per cent).

Ethnicity by religion

The census reports on religion in nine categories: six religious groups, 'other religion', 'no religion' and 'religion not stated'. Table DC2201EW provides data on the ethnic composition of each of these groups which can provide an indication of the extent to which they are integrated and representative of the wider population.

Figure 23: Ethnic make-up of religious groups in London, 2011



Source: 2011 table DC2201EW

Overall in London 59.8 per cent of residents identify as white. Within the Christian community this proportion rises to 70.4 per cent and within the Jewish community to 90.6 per cent. Of those stating they had no religion the highest proportion came from the White ethnic group with 80 per cent or 1.36 million Londoners falling into this category. White residents also accounted for the largest share of those who opted out of answering the religion question (62.5 per cent of religion not stated responses came from residents with White ethnicity).

Those identifying as Asian/Asian British make up 1.51 million of London's total population (18.5 per cent). Within the Buddhist community 73.0 per cent were Asian while 95.6 per cent of Hindus and 87.5 per cent of Muslims identify with this ethnicity. The Asian ethnic group also had the highest percentage of Londoners with an 'other' religion (42.5 per cent), that is a religion not included in the list of six main religions reported in the census. The largest 'other religion' group in London is Jain (15,000 members).

Black Londoners account for 18.8 per cent of the Christian population in the capital and 16.5 per cent of the Muslim population.

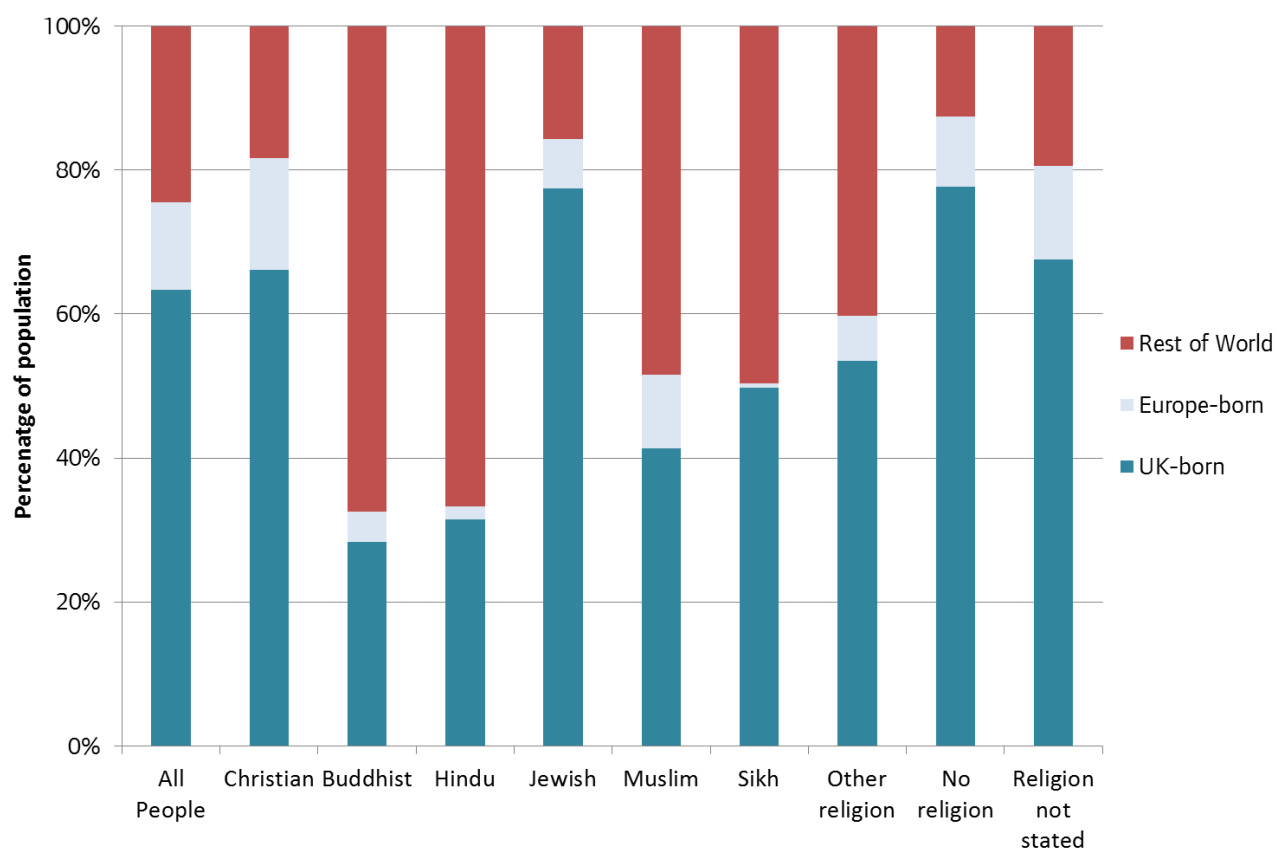
Those in the 'other ethnic group' category, which includes Arab, are most likely to be Muslim (13.7 per cent of Muslims are found in this ethnic group) or Sikh (9.1 per cent).

Islam is the most ethnically diverse religious group in the capital. Its 1.01 million followers were distributed more evenly between the ethnic group categories than any of the other religions reported in the census.

Country of birth by religion

The propensity to be of a particular faith is strongly linked to geography and especially to country of birth. The high number and proportion of migrant residents in London means all religious groups are well represented. The data in table DC2207EW provide information on country of birth by religion and show the extent to which different geographic areas contribute population to the nine religious groups.

Figure 24: Region of birth of residents by religion, London residents, 2011



Source: 2011 table DC2207EW

There is significant variation in the ethnicity of different religious populations in London and country of birth has an important role to play in defining the demography of these different populations. The data presented in Figure 24 shows, for each group reported in the census, the percentage of that population born in the UK, Europe or elsewhere. The first bar shows the London average for all 8.17 million of the capital's residents.

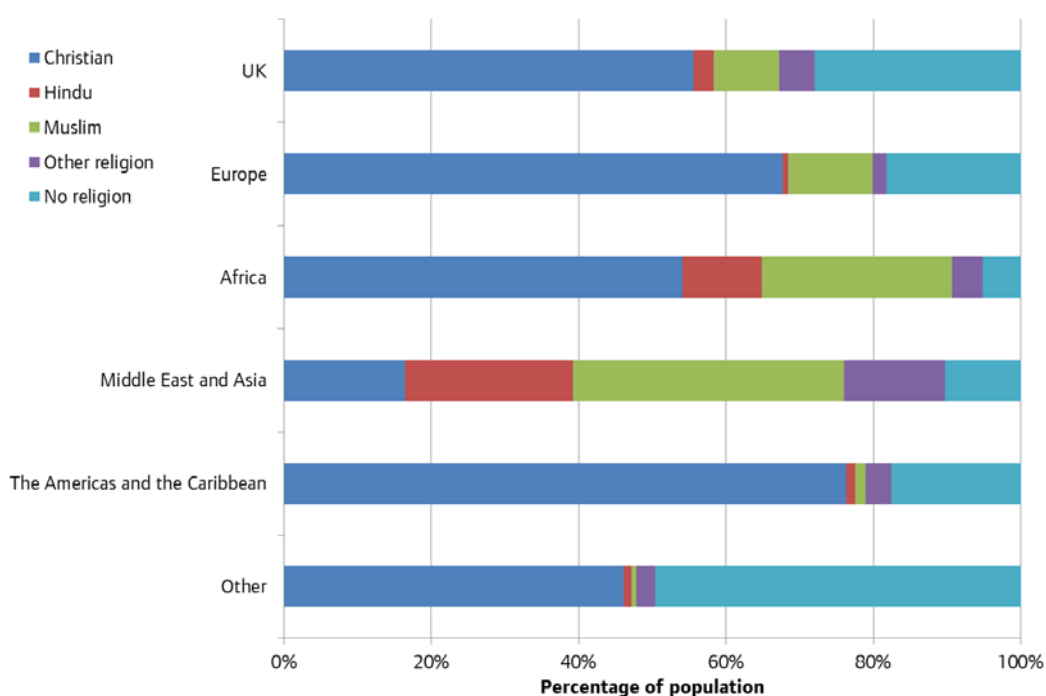
The Christian population of London had a structure which was quite representative of the wider population. UK-born Christians in London made up 66.1 per cent of the total Christian population, while across all faiths the UK-born population was 63.3 per cent of the total. There were slightly more European-born residents in the Christian population compared to the London average meaning that those born outside Europe were fewer than might have been expected.

The Buddhist and Hindu populations were overwhelmingly born outside the UK and Europe. 67.5 per cent of London's Buddhists were born outside the UK and Europe, with 63.8 per cent born in Asia. Among Hindus 66.7 per cent were born outside the UK and Europe with almost half of residents (48.8 per cent) born in Southern Asia. The Sikh community was relatively evenly split between UK-born and outside-Europe-born with 49.8 per cent and 49.6 per cent respectively. The majority of the non-UK born Sikh population were born in Southern Asia (40.5 per cent of the total Sikh population).

41.4 per cent of the Muslim population were UK-born and 48.4 per cent were born outside Europe. 14.9 per cent of London's Muslim population were born in Africa while 25.7 per cent were born in Southern Asia and 6.5 per cent were born in the Middle East.

Those stating that they had no religion had the largest percentage of UK-born residents with 77.6 per cent (after Jewish with 77.5 per cent). Similarly, those choosing to opt out of this voluntary question, are majority UK-born (67.5 per cent).

Figure 25: Religion of London residents by country of birth, 2011



Source: 2011 table DC2207EW

Note: Figure does not include those who opted out of answering the question

Figure 25 shows how religious affiliation varies by country of birth for the population of London. 50.6 per cent of the UK-born population of London were Christian and 25.4 per cent had no religion. 8.1 per cent of UK-born Londoners were Muslim. The European-born population was 61.5 per cent Christian and 10.4 per cent Muslim. 16.6 per cent were of no religion. Christianity was the largest group for those born in both Africa (54.1 per cent) and the Americas & the Caribbean (76.3 per cent). In addition to the Christian population African-born Londoners were 10.8 per cent Hindu and 25.8 per cent Muslim. African born Londoners are the least likely to have no religion with just 5.1 per cent reporting 'no religion' on their census form.

36.8 per cent of Londoners born in the Middle East & Asia were cent Muslim, 22.7 per cent were Hindu and 16.5 per cent were Christian. This group contained the highest proportion of

residents following a religion other than Muslim, Hindu or Christian; 5.8 per cent were Sikh and 5.8 per cent were Buddhist.

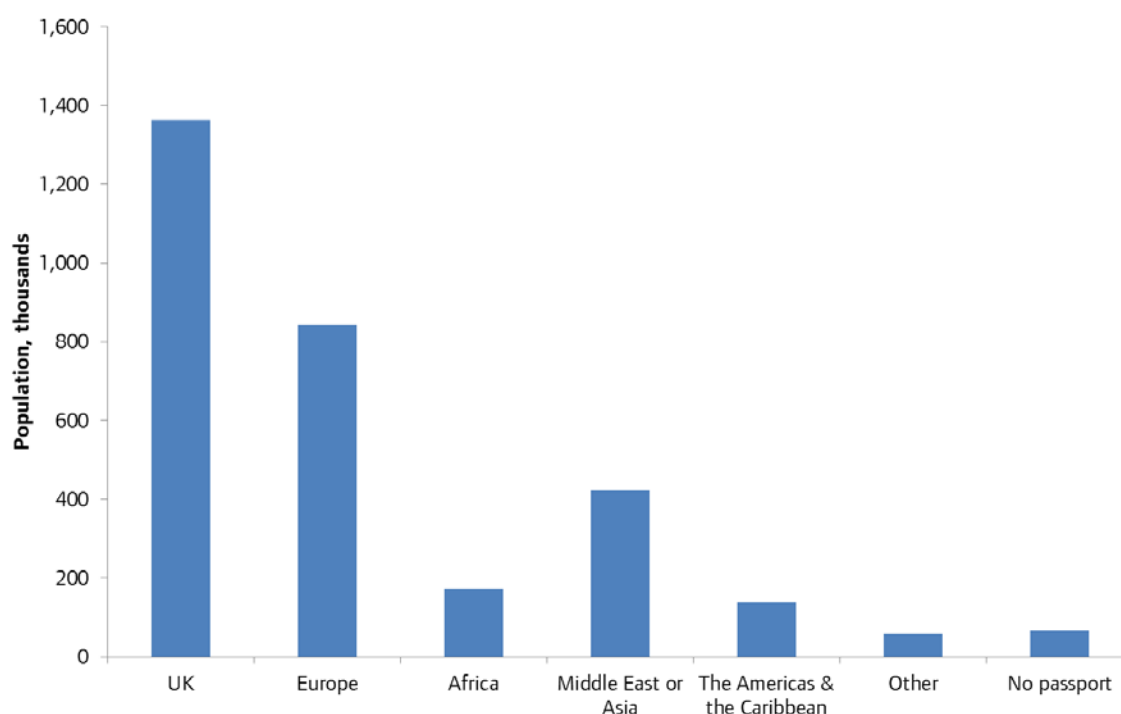
Almost half (49.6 per cent) of the 'other country' category, which includes Australasia, have no religion. This value is high because this migrant population is young and census data described elsewhere here documents the greater propensity for the young to specify 'no religion'. This is therefore not an indication that individuals from these countries are more secular merely that the demographics of those who settle in London favour having no religious belief. The other major religious group in the 'other country of birth' category is Christian with 46.1 per cent of the population.

Country of birth by passports

The 2011 Census was the first to ask respondents to report on the passports that they held. The univariate data on passports showed trends very similar to the country of birth data, for example Poland and India rank second and third behind UK in both datasets. However, multivariate data uncovers subtleties in the population that simple univariate data cannot. In this case information on passports held by country of birth show some particularly interesting results, especially if one views the passport held by an individual as a proxy for nationality (as distinct from country of birth).

As would be expected, among the UK-born population the overwhelming majority who hold a passport hold a British passport (96.8 per cent). Figure 26 describes the variety and variation in the passports held by non-UK-born residents in London.

Figure 26: Passports held by non-UK-born London residents, 2011



Source: 2011 table DC2208EWR

The largest group, accounting for 1.36 million residents or 45.5 per cent of all foreign-born Londoners, were those who held a UK passport. A further 28.1 per cent of the foreign-born population held a European passport (including Republic of Ireland), and the remaining 26.3 per cent held a passport from outside of the UK and Europe.

The top five passports held by non-UK born residents in London are:

- UK (1,362,800)
- Poland (140,000)
- India (117,300)
- Republic of Ireland (108,600)
- France (73,600)

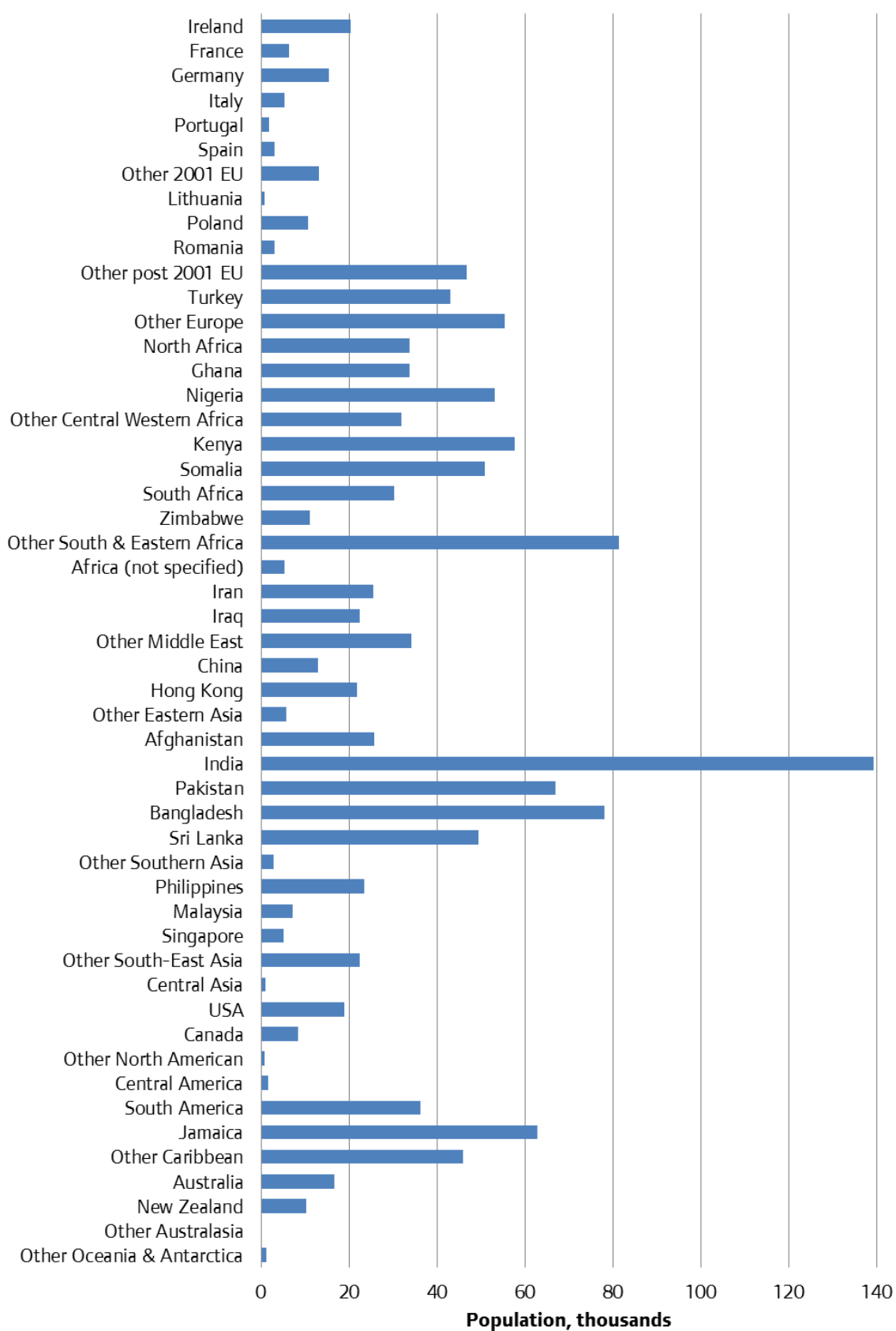
A total of 65,900 non-UK-born residents hold no passport. This group includes asylum seekers who have Home Office documentation rather than passports, and also those who were born elsewhere and have been granted UK citizenship but have not applied for a passport.

Figure 27 shows the number of UK passport holders from each of the countries reported in the census data. The top five countries of birth for UK passport holders living in London (excluding the UK itself) are:

- India (139,300)
- Other South & Eastern Africa (81,400)
- Bangladesh (78,100)
- Pakistan (67,100)
- Jamaica (62,800)

The high number of British passport holders from these countries serves to underline how established these early migrant communities are within the wider London population.

Figure 27: UK passport holders by country of birth, London residents, 2011



Source: 2011 table DC2208EWR

To understand these data in context it is useful to see what percentage of residents born in any particular country hold a UK passport. For instance, while Indian-born UK passport holders are the most numerous they make up just 53.5 per cent of all Indian-born people living in London. Many other countries have much higher proportions with British passports.

The top five countries for UK passport holders (as a percentage of all passport holders) are:

- UK (96.8 per cent hold a UK passport)
- British Overseas Territories (95.8 per cent hold a UK passport)
- Kenya (90.4 per cent hold a UK passport)
- Somalia (85.2 per cent hold a UK passport)
- Hong Kong (82.6 per cent hold a UK passport)

Over half of the countries/aggregate groups reported in the census (30 out of 53) had populations of UK passport holders that exceeded those that did not hold a UK passport.

The 23 that did not, includes all 11 EU country/aggregate groups reported in the census. These EU nationals arguably have less incentive to apply for a UK passport than other nationalities.

GLA INTELLIGENCE

Greater London Authority
City Hall
The Queens Walk
London SE1 2AA

Tel 020 7983 4922
Fax 020 7983 4674
Minicom 020 7983 4000
Email census@london.gov.uk

<http://data.london.gov.uk/census>

