

2011 Mid-Year Population Estimates

GLA Intelligence Update 18-2012

September 2012

Introduction

On the 25th September 2012 ONS released the population estimates for local and health authorities as at mid-2011. These are the first estimates to be based upon the recently published 2011 Census populations. These data comprise the population by gender and age group.

Key Findings

- The resident population of London at mid-2011 8.204 million, up by 30 thousand since Census day in 2011 (27th March 2011)
- This compares to the ONS mid-2010 estimate of 7.825 million and a population at mid-2001 of 7.322 million.
- The mid-2011 population of England & Wales was 56.171 million. This compares to the ONS mid-2010 estimate of 55.240 million.
- London's population grew between 2001 and 2011 by 882 thousand persons and accounted for some 23 per cent of the growth experienced by England & Wales over that period of time.
- Rolled forward estimates for 2011 were also published based on both the new migration methodology as well as the old methodology.
- The old method estimated London's population at 7.910 million, some 264 thousand smaller than the actual 2011 mid year estimate. The rolled forward estimated using the new method was closer at 8.097 million, a difference of 108 thousand persons when compared with the published 2011 Census based mid-year estimates.

2011 Mid-year estimates, Greater London

The resident population of London at mid-2011 was 8.204 million. This compares with the ONS estimate for mid-2001 of 7.322 million and the most recent estimate for mid-2010 of 7.825 million. The 2011 Census figure for London was 8.174 million. Hence it is estimated that between Census Day (27th March 2011) and 30th June 2011, London's population grew by some 30.4 thousand persons.

Nationally the picture is similar. **The mid-2011 population of England & Wales was 56.171 million.** This compares with an estimate of 52.359 million at mid-2001 and 55.240 million at mid-2010. Between Census Day (27th March 2011) and 30th June 2011, the population of England and Wales is estimated to have grown by 95 thousand persons. Growth in London accounted for 32 per cent of the total growth nationally over the 3 month period.

Readers should note that over the past decade 2001 mid year estimates (as well as those between 2002 and 2009) have been revised at several stages. The original 2001 mid year estimate for London published in October 2002 was 7.188 million. For the purposes of comparison the latest revisions to the back series have been used. These were published in 2010. Revisions over the decade accounted for presumed underestimates of men aged 25 to 49 in the 2001 Census. Additionally the latest 2010 revisions accounted for changes in the way international and internal (within England and Wales) migration are calculated at local authority level. More information on this new methodology is available here at <http://data.london.gov.uk/datastore/package/improvements-estimating-migration>. These changes were also the basis for the differentiated old and new rolled forward estimates.

Figure 1 shows the difference between the three 2011 mid-year estimates for London

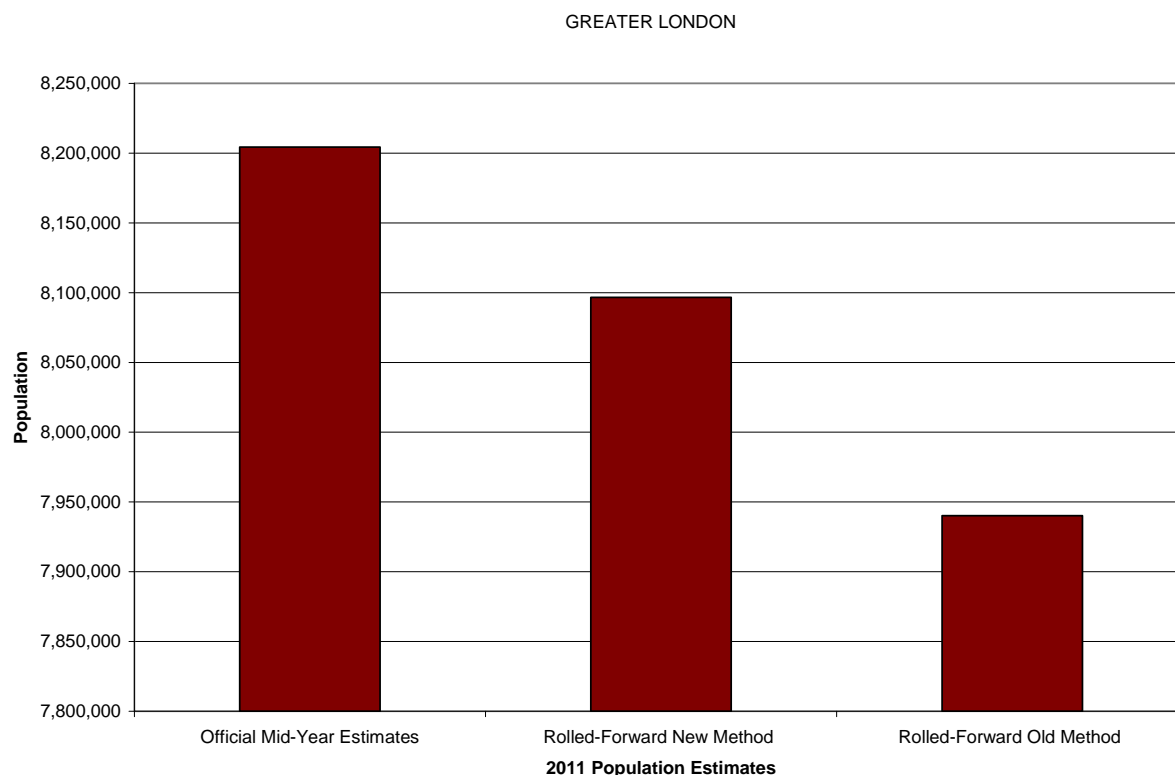
- The published 2011 Census based MYE published today
- The rolled forward estimated for 2001 produced using the new method
- The rolled forward estimated for 2001 produced using the old method

The rolled-forward mid-2011 population estimates are created by adding the net effect of births, deaths and migration onto the mid-2010 population estimates. They do not take account of the 2011 Census results; in other words they represent what the mid-2011 estimates would be if the 2011 Census had not happened.

The two rolled forward estimates differ in the methods used to disseminate international migration to local authorities. The new method uses administrative data sources and has resulted in a larger share to London local authorities hence the increase in the size of the population when compared with the old method.

Both rolled forward estimates are lower than the 2011 Census based mid-year estimate suggesting there may be some concerns with the accuracy of mid year estimates over the past decade.

Figure 1: Comparison of 2011 Population estimates. Census based, Rolled forward Old Method and Rolled Forward New Method



Source: Mid-2011 population estimates, ONS

The magnitude of the differences are largest between the old method rolled forward 2011 estimates and the 2011 Census based mid year estimates (264 thousand persons). When comparing the new method and the 2011 Census based mid year estimate the difference is of the order of 108 thousand persons. However ONS were unable to implement the new migration method between 2001 and 2004 so for this period the old migration method remained.

2011 Mid-year estimates, Borough Populations

Table 2 shows the 2011 mid year estimates by local authority, both rolled forward estimates and the 2011 census based estimate.

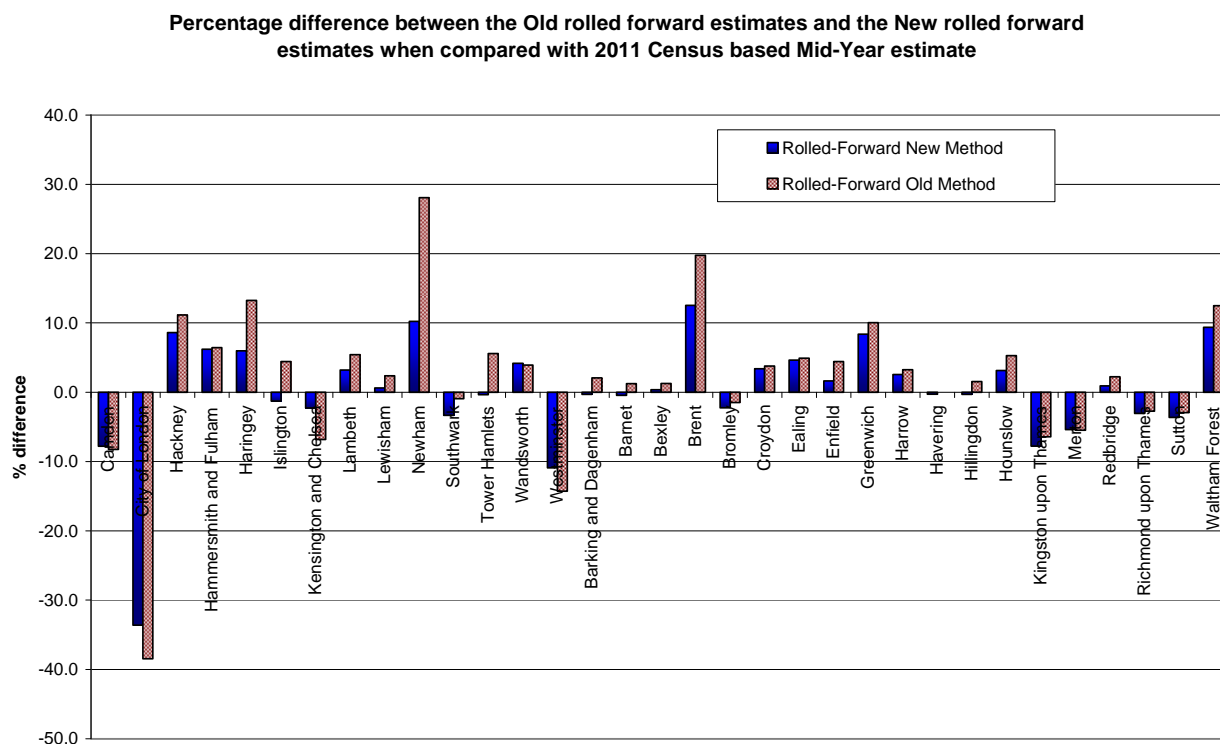
Table 2: Comparison of 2011 mid-year estimates by local authority with rolled forward estimates

	2011 Population estimates			Difference		% Difference	
	Official Mid-Year Estimates	Rolled-Forward New Method	Rolled-Forward Old Method	Rolled-Forward New Method	Rolled-Forward Old Method	Rolled-Forward New Method	Rolled-Forward Old Method
LONDON	8,204,407	8,096,647	7,940,124	107,760	264,283	1.3	3.3
Camden	220,087	238,713	239,889	-18,626	-19,802	-7.8	-8.3
City of London	7,412	11,163	12,043	-3,751	-4,631	-33.6	-38.5
Hackney	247,182	227,566	222,380	19,616	24,802	8.6	11.2
Hammersmith and Fulham	182,445	171,743	171,416	10,702	11,029	6.2	6.4
Haringey	255,540	241,122	225,611	14,418	29,929	6.0	13.3
Islington	206,285	208,963	197,507	-2,678	8,778	-1.3	4.4
Kensington and Chelsea	158,251	161,913	169,811	-3,662	-11,560	-2.3	-6.8
Lambeth	304,481	294,993	288,798	9,488	15,683	3.2	5.4
Lewisham	276,938	275,299	270,536	1,639	6,402	0.6	2.4
Newham	310,460	281,666	242,387	28,794	68,073	10.2	28.1
Southwark	288,717	298,675	291,488	-9,958	-2,771	-3.3	-1.0
Tower Hamlets	256,012	256,975	242,443	-963	13,569	-0.4	5.6
Wandsworth	307,710	295,308	296,077	12,402	11,633	4.2	3.9
Westminster	219,582	246,459	256,136	-26,877	-36,554	-10.9	-14.3
Barking and Dagenham	187,029	187,610	183,251	-581	3,778	-0.3	2.1
Barnet	357,538	359,128	353,106	-1,590	4,432	-0.4	1.3
Bexley	232,774	231,924	229,849	850	2,925	0.4	1.3
Brent	312,245	277,462	260,700	34,783	51,545	12.5	19.8
Bromley	310,554	317,693	315,242	-7,139	-4,688	-2.2	-1.5
Croydon	364,815	352,811	351,511	12,004	13,304	3.4	3.8
Ealing	339,314	324,231	323,454	15,083	15,860	4.7	4.9
Enfield	313,935	308,902	300,594	5,033	13,341	1.6	4.4
Greenwich	255,483	235,748	232,200	19,735	23,283	8.4	10.0
Harrow	240,499	234,495	232,952	6,004	7,547	2.6	3.2
Havering	237,927	238,577	237,928	-650	-1	-0.3	0.0
Hillingdon	275,499	276,335	271,298	-836	4,201	-0.3	1.5
Hounslow	254,927	247,195	242,142	7,732	12,785	3.1	5.3
Kingston upon Thames	160,436	173,912	171,428	-13,476	-10,992	-7.7	-6.4
Merton	200,543	211,964	212,150	-11,421	-11,607	-5.4	-5.5
Redbridge	281,395	278,869	275,213	2,526	6,182	0.9	2.2
Richmond upon Thames	187,527	193,446	192,799	-5,919	-5,272	-3.1	-2.7
Sutton	191,123	198,311	196,914	-7,188	-5,791	-3.6	-2.9
Waltham Forest	259,742	237,476	230,871	22,266	28,871	9.4	12.5

Source: Mid-2011 population estimates, ONS

Excluding the City of London (which can distort the picture due to its small population) London local authorities saw some of the largest positive and negative differences when comparing the 2011 Census based estimates with both rolled forward estimates. For instance Brent and Newham gained the most from the changes in methodology however Kensington & Chelsea and Westminster saw decreased numbers.

Figure 3: Percentage difference between new and old rolled forward estimates when compared with 2011 Census based mid year estimates

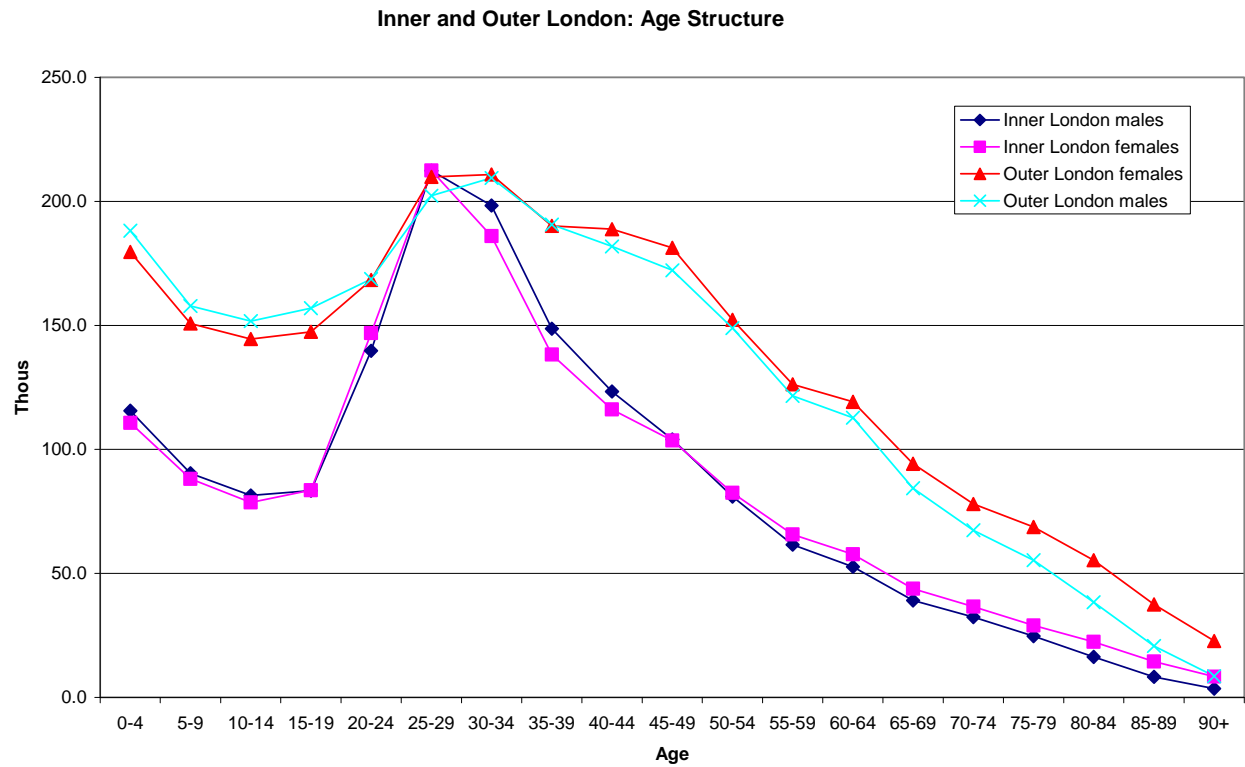


Source: Mid-2011 population estimates, ONS

The Appendix contains local authority level charts that show differences by age between both 2011 rolled forward estimates and the 2011 Census based estimates. Readers may find these useful in identifying particular age groups that been affected more by changes in methodology.

Population age structure in Inner London continues to be significantly different from that in Outer London. Inner London has a noticeably younger age profile than Outer London. Figure 4 shows these differences along with the greater differences between the genders at older ages.

Figure 4: Age structure, inner and outer London



Source: Mid-2011 population estimates, ONS

Components of change: Census Day 2011 - Mid 2011

ONS also released components of change data. These usually outline the degree to which each component (births, deaths and migration) has contributed to the difference in population from one year to the next. However since the 2011 mid year estimates are 2011 Census based the components of change only account for the three or so months between census day (27th March 2011) and mid year (30th June 2011).

Figure 5 shows the components of change for London local authorities.

Figure 5: Components of change for London local authorities

	Census Day 2011 population	Live births	Deaths	Natural change	Net migration & other changes	Total change	Mid-2011 population
LONDON	8,174.0	34.4	11.6	22.7	7.7	30.4	8,204.4
Inner London	3,232.0	13.9	3.8	10.1	-1.1	9.1	3,241.1
Camden	220.4	0.8	0.3	0.5	-0.8	-0.3	220.1
City of London	7.4	0.0	0.0	0.0	0.0	0.0	7.4
Hackney	246.3	1.1	0.3	0.8	0.1	0.9	247.2
Hammersmith and Fulham	182.5	0.7	0.2	0.5	-0.5	0.0	182.4
Haringey	254.9	1.1	0.3	0.8	-0.2	0.6	255.5
Islington	206.1	0.8	0.3	0.5	-0.4	0.2	206.3
Kensington and Chelsea	158.6	0.6	0.2	0.4	-0.8	-0.4	158.3
Lambeth	303.1	1.2	0.3	0.9	0.5	1.4	304.5
Lewisham	275.9	1.3	0.4	0.9	0.2	1.1	276.9
Newham	308.0	1.6	0.3	1.3	1.2	2.5	310.5
Southwark	288.3	1.3	0.3	0.9	-0.5	0.4	288.7
Tower Hamlets	254.1	1.2	0.3	0.9	1.0	1.9	256.0
Wandsworth	307.0	1.4	0.4	1.1	-0.3	0.7	307.7
Westminster	219.6	0.8	0.3	0.5	-0.6	0.0	219.6
Outer London	4,942.0	20.4	7.8	12.6	8.7	21.4	4,963.3
Barking and Dagenham	185.9	1.0	0.3	0.7	0.5	1.1	187.0
Barnet	356.4	1.4	0.6	0.8	0.3	1.2	357.5
Bexley	232.0	0.8	0.4	0.4	0.4	0.8	232.8
Brent	311.2	1.4	0.4	1.0	0.0	1.0	312.2
Bromley	309.3	1.1	0.6	0.5	0.7	1.2	310.6
Croydon	363.3	1.5	0.6	0.9	0.6	1.5	364.8
Ealing	338.4	1.6	0.4	1.2	-0.3	0.9	339.3
Enfield	312.5	1.3	0.4	0.8	0.7	1.5	313.9
Greenwich	254.7	1.2	0.4	0.8	0.0	0.8	255.5
Harrow	239.0	0.9	0.4	0.5	1.0	1.5	240.5
Havering	237.2	0.8	0.5	0.2	0.5	0.7	237.9
Hillingdon	274.0	1.1	0.4	0.6	0.8	1.5	275.5
Hounslow	254.0	1.2	0.3	0.8	0.1	0.9	254.9
Kingston upon Thames	160.0	0.6	0.3	0.4	0.0	0.4	160.4
Merton	199.7	0.9	0.3	0.6	0.3	0.9	200.5
Redbridge	279.0	1.2	0.5	0.7	1.7	2.4	281.4
Richmond upon Thames	187.0	0.7	0.3	0.4	0.1	0.5	187.5
Sutton	190.1	0.7	0.4	0.3	0.7	1.0	191.1
Waltham Forest	258.2	1.2	0.3	0.9	0.6	1.5	259.7

Source: Mid-2011 population estimates, ONS

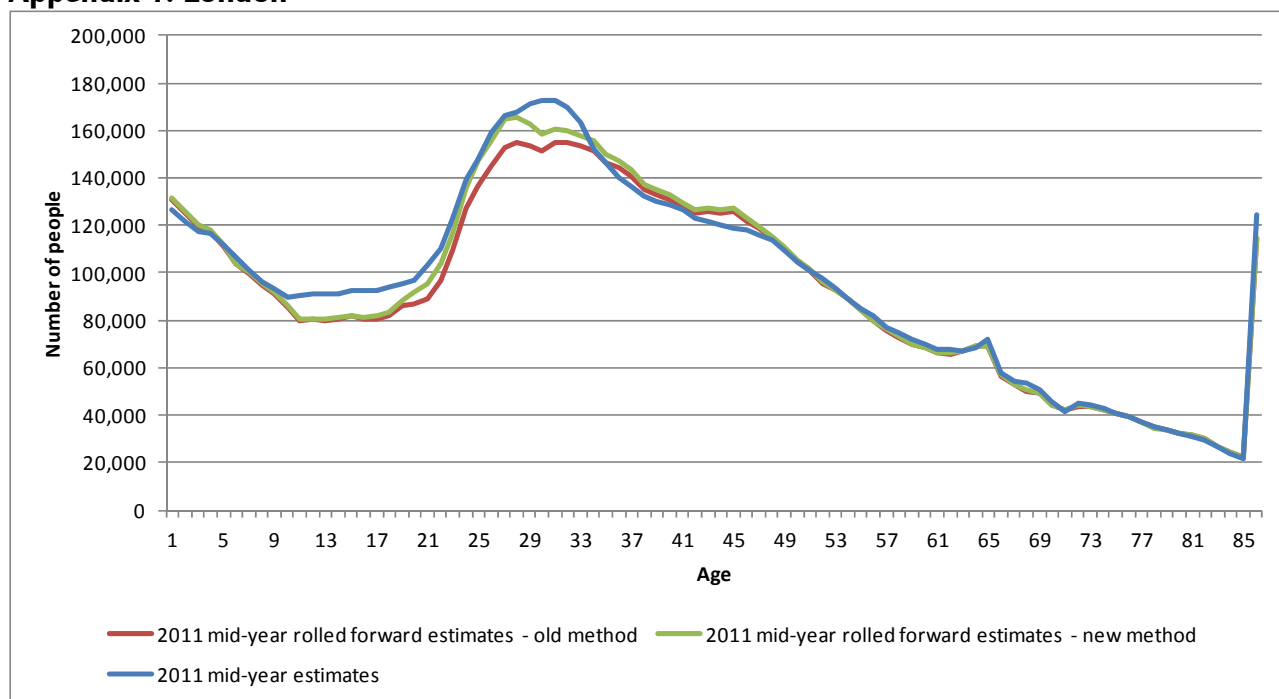
Over the three month period, there were estimated to have been over 34 thousand births. Births between mid 2010 and mid 2011 stood at around 133 thousand per year. Assuming that the three months from Census day to mid year are generally representative of the remainder of the year then London can expect a slight increase in annualised births to around 137 thousand births.

Currently detailed components of change for migration are not available however the last three months showed positive net migration to London. This result warrants further investigation once detailed information is received from ONS.

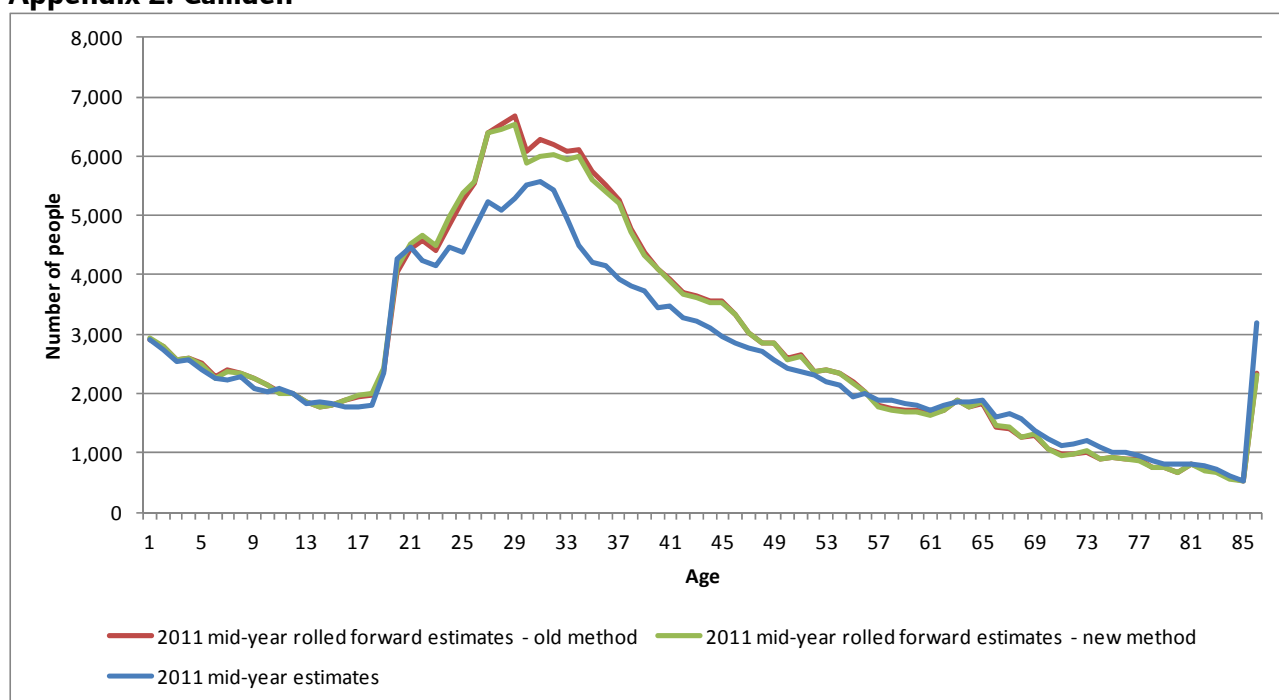
Appendix: Comparison of 2011 mid-year estimates and rolled forward estimates (old and new method)

Source for all charts: Mid-2011 population estimates, ONS

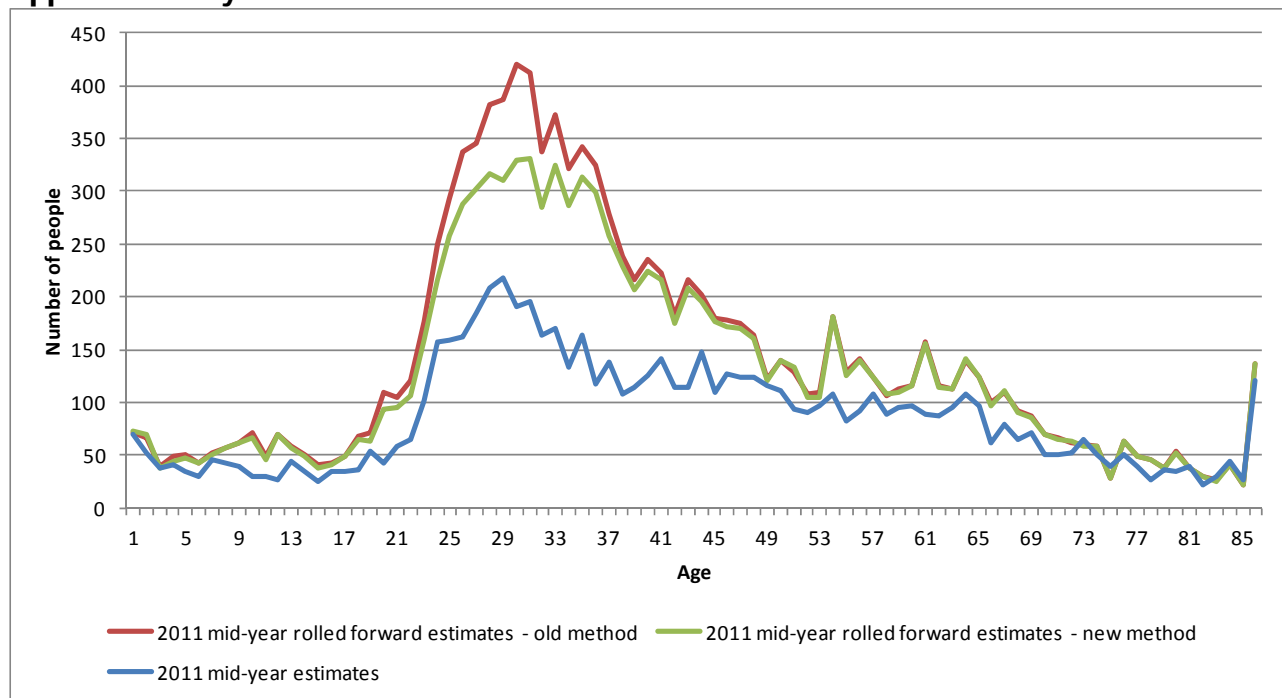
Appendix 1: London



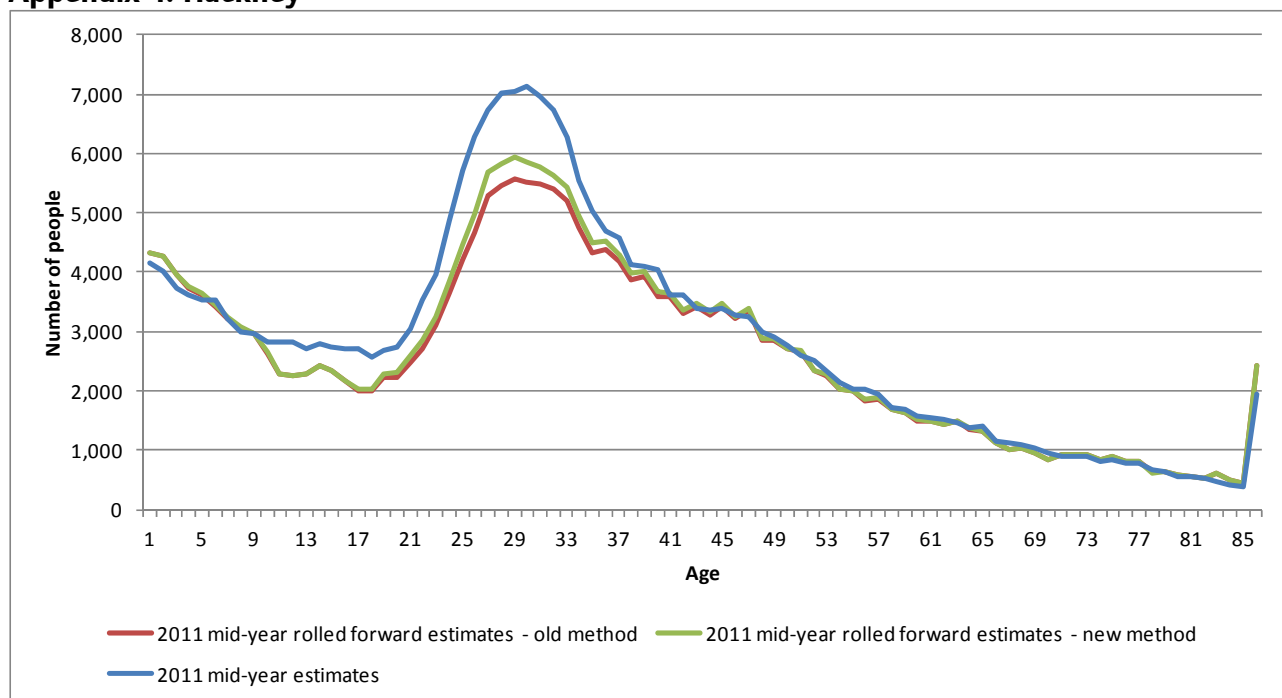
Appendix 2: Camden



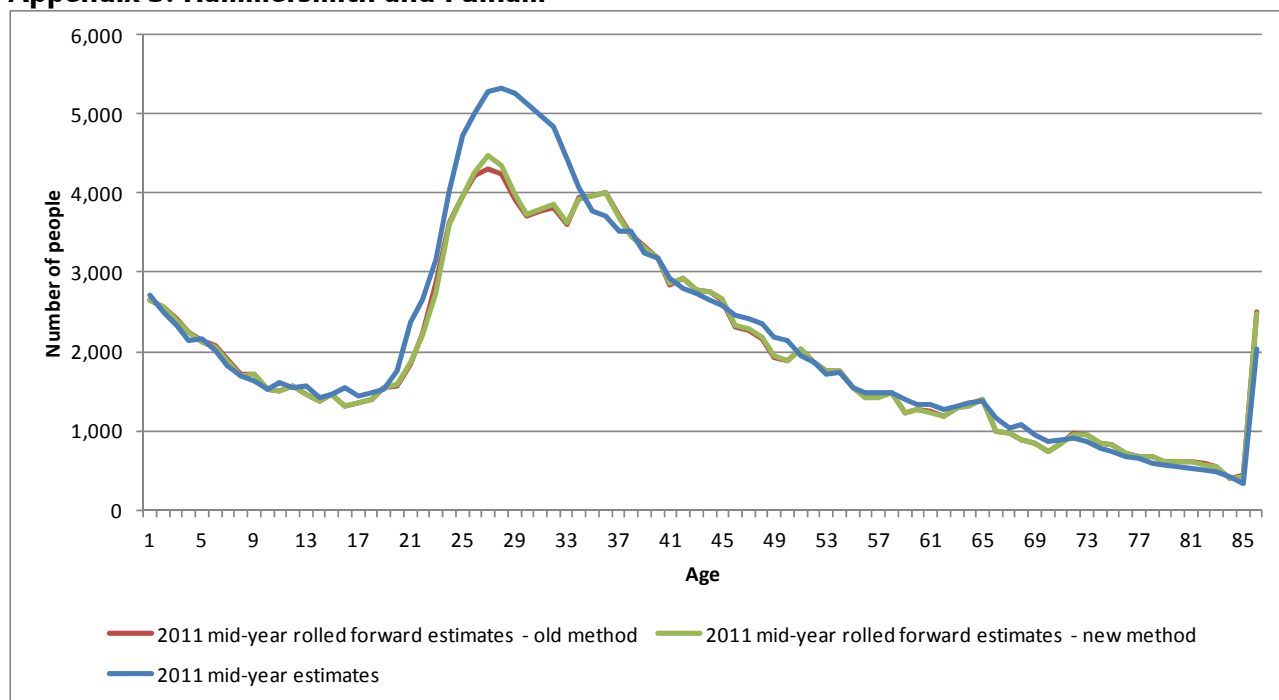
Appendix 3: City of London



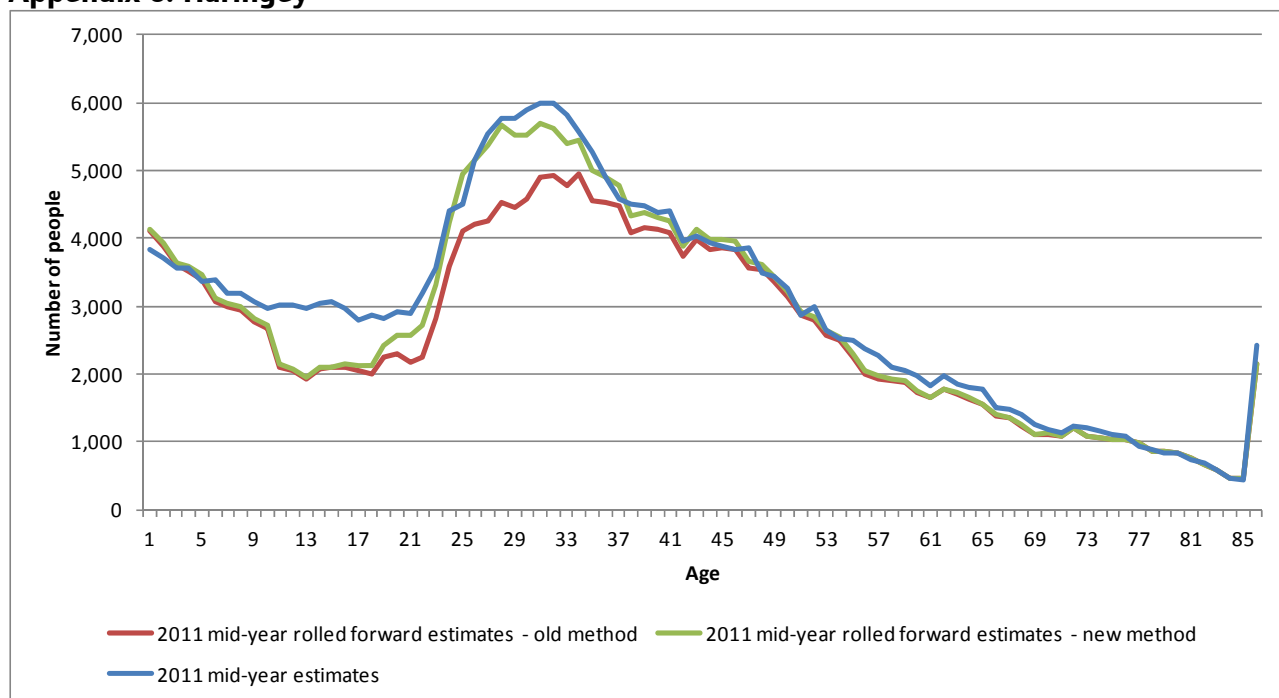
Appendix 4: Hackney



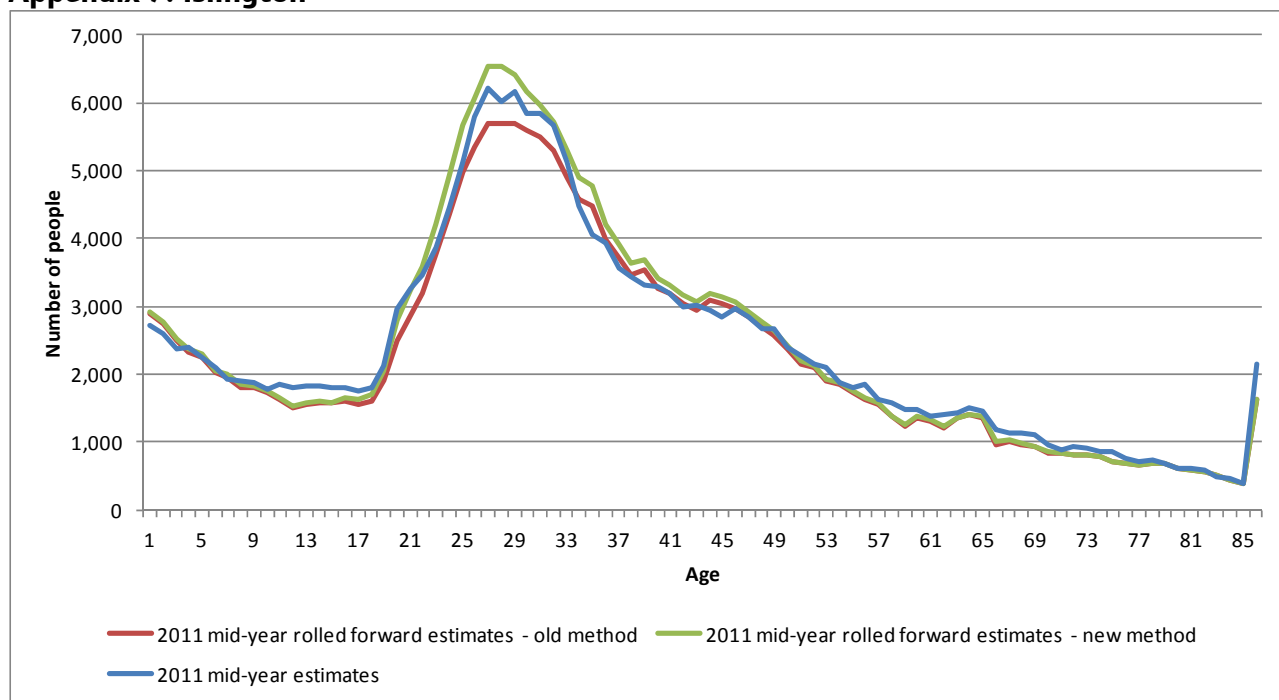
Appendix 5: Hammersmith and Fulham



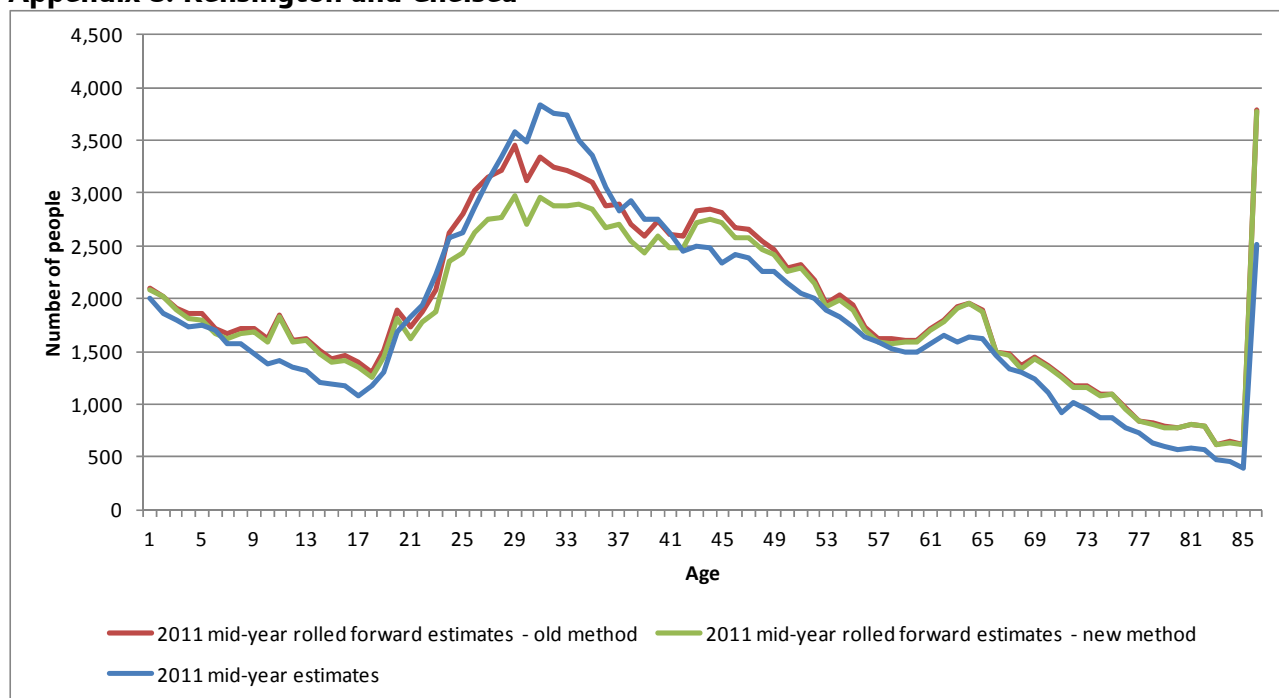
Appendix 6: Haringey



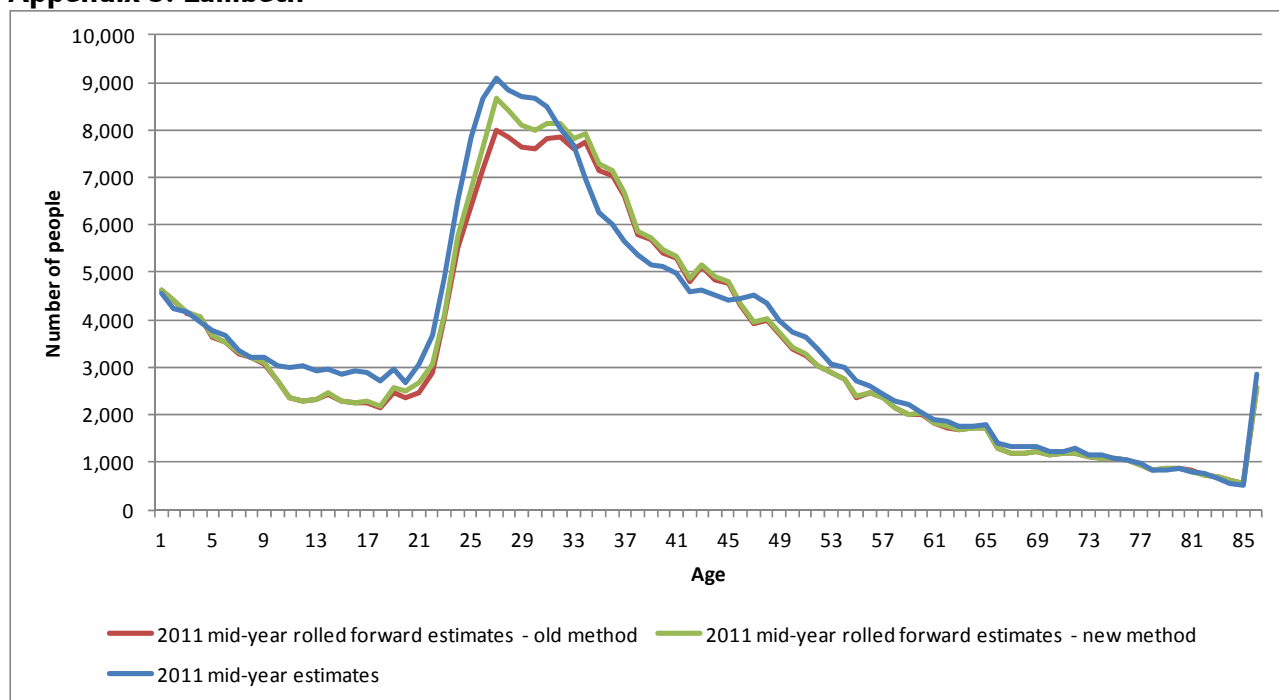
Appendix 7: Islington



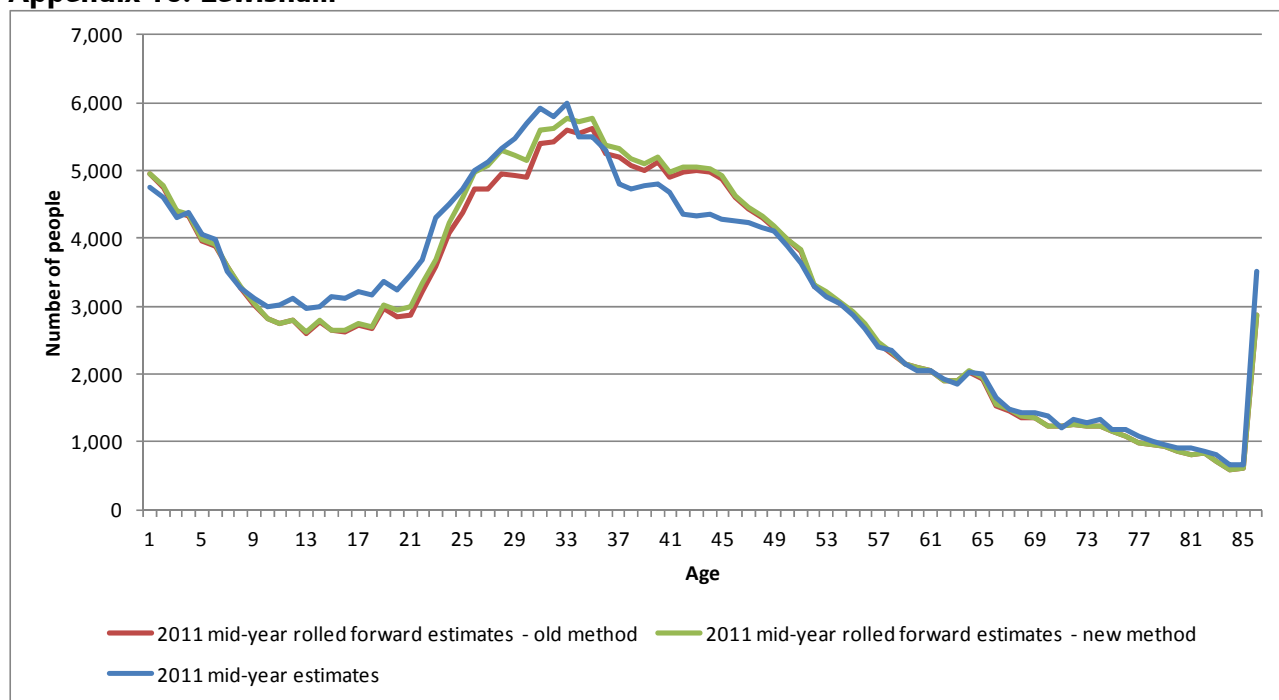
Appendix 8: Kensington and Chelsea



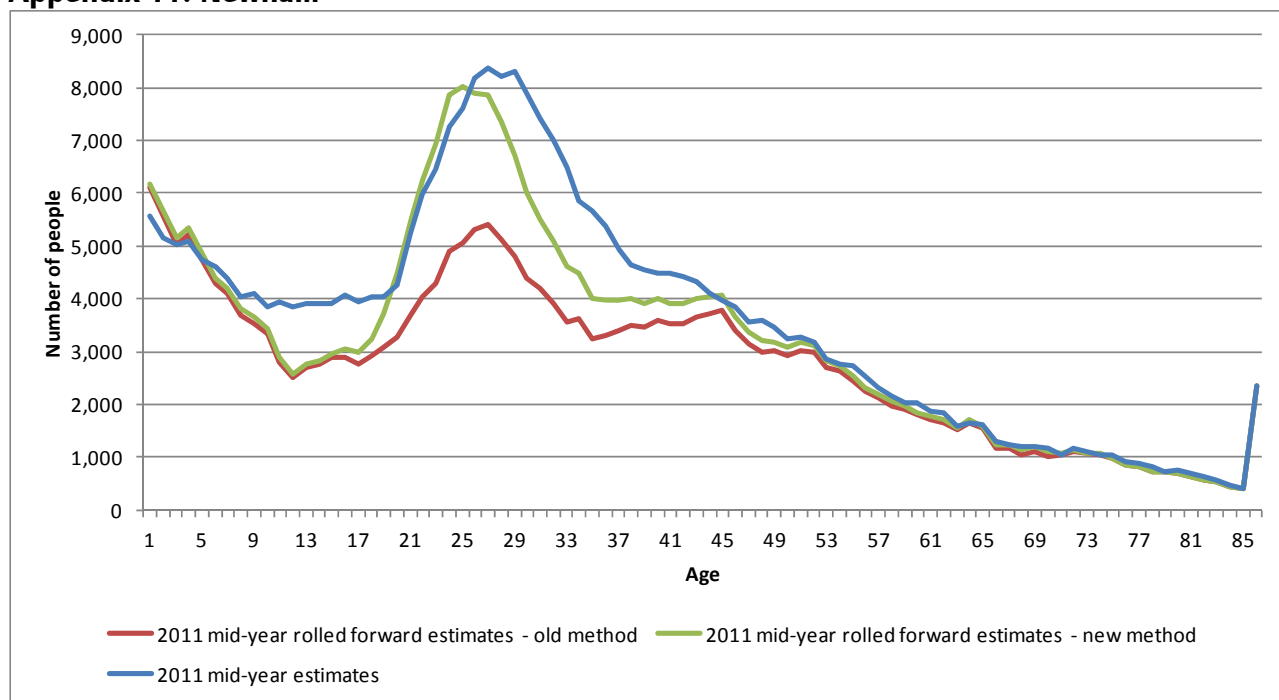
Appendix 9: Lambeth



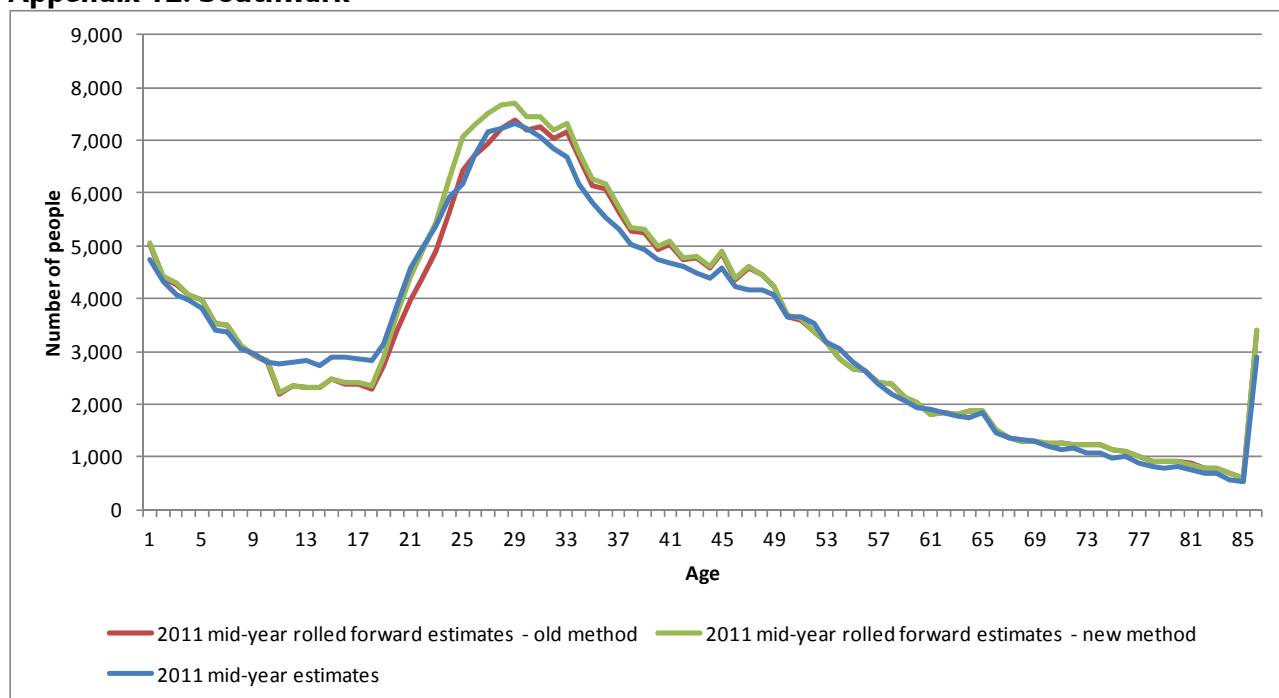
Appendix 10: Lewisham



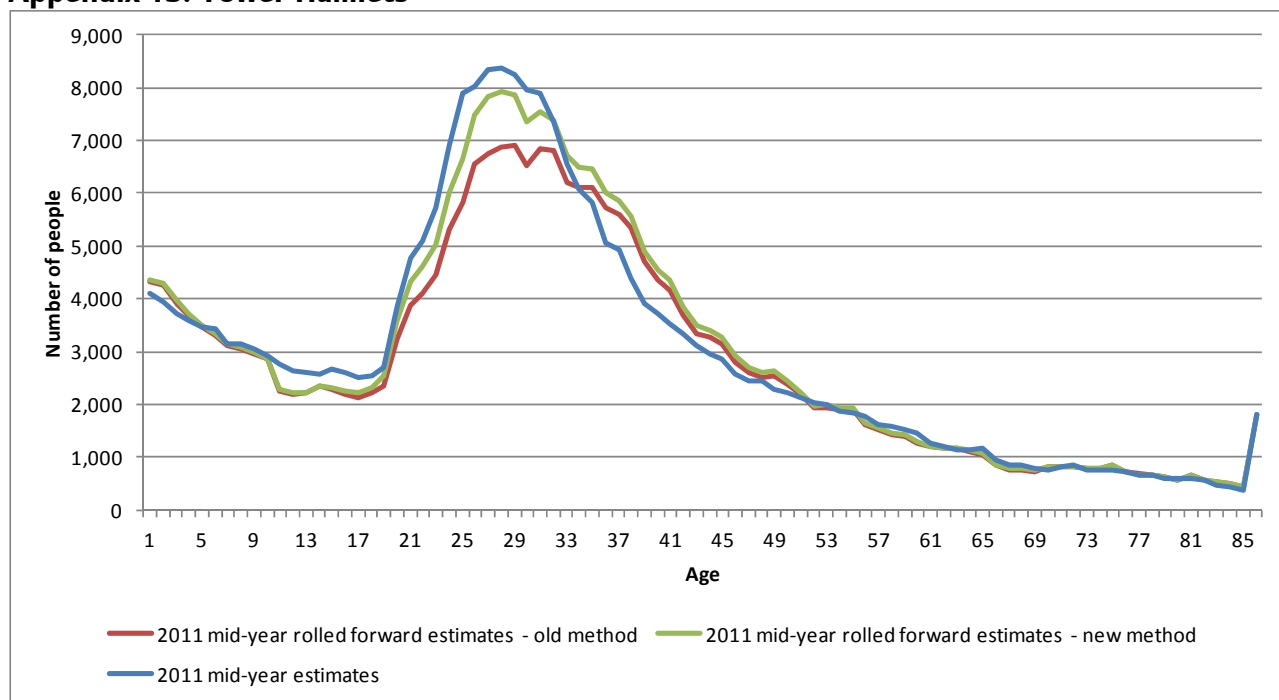
Appendix 11: Newham



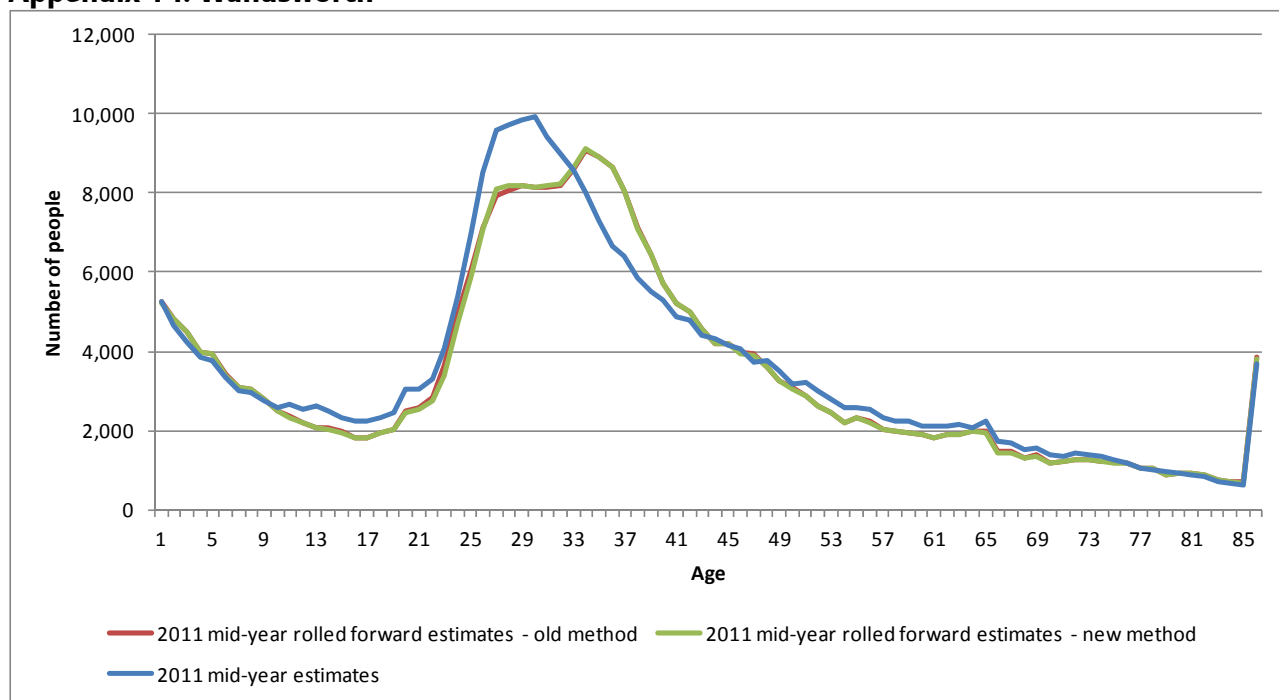
Appendix 12: Southwark



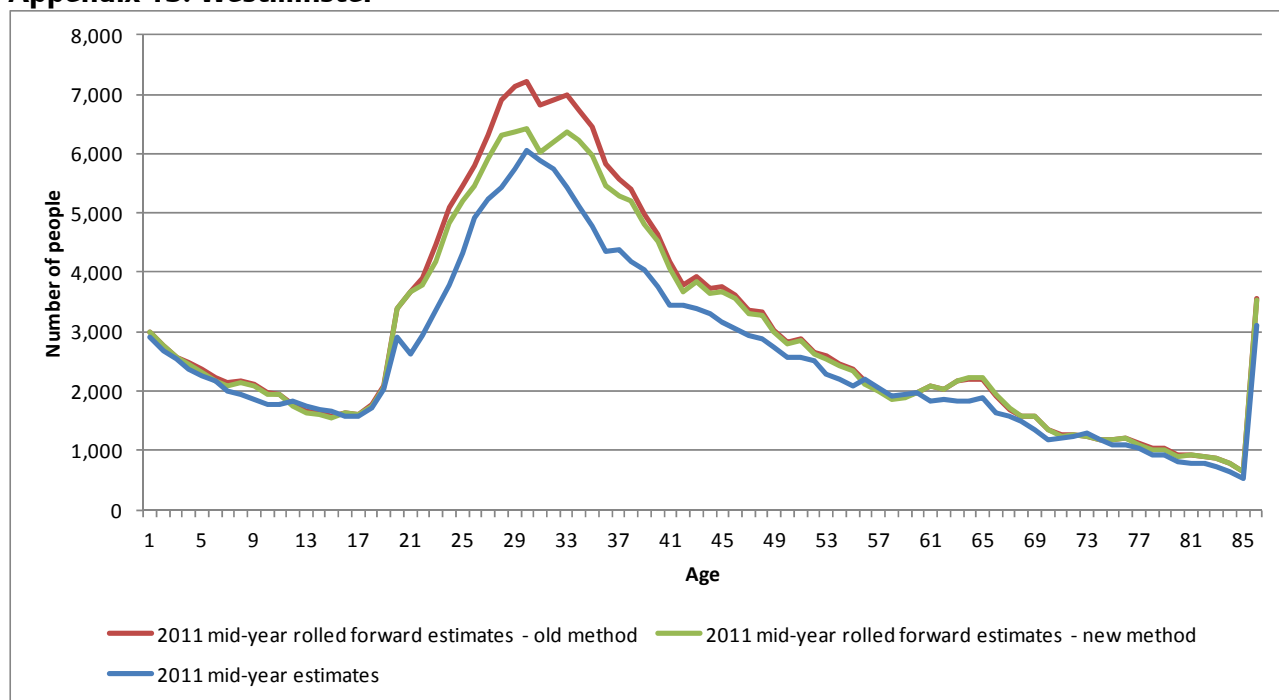
Appendix 13: Tower Hamlets



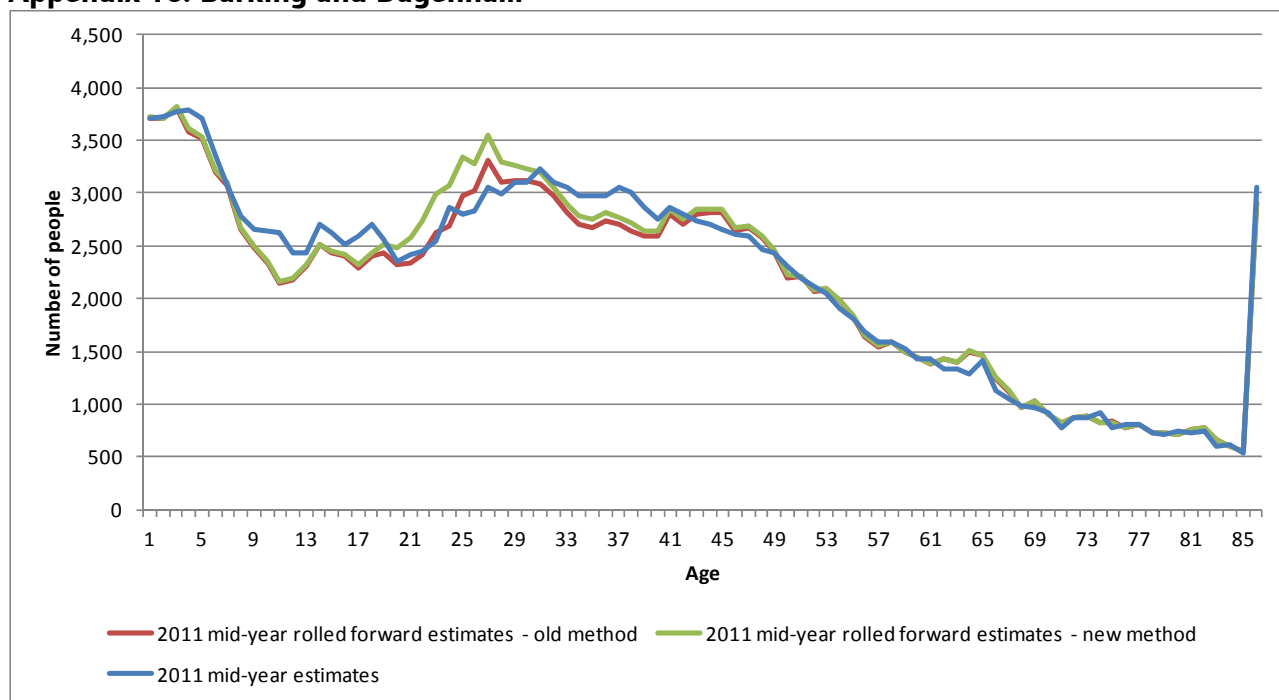
Appendix 14: Wandsworth



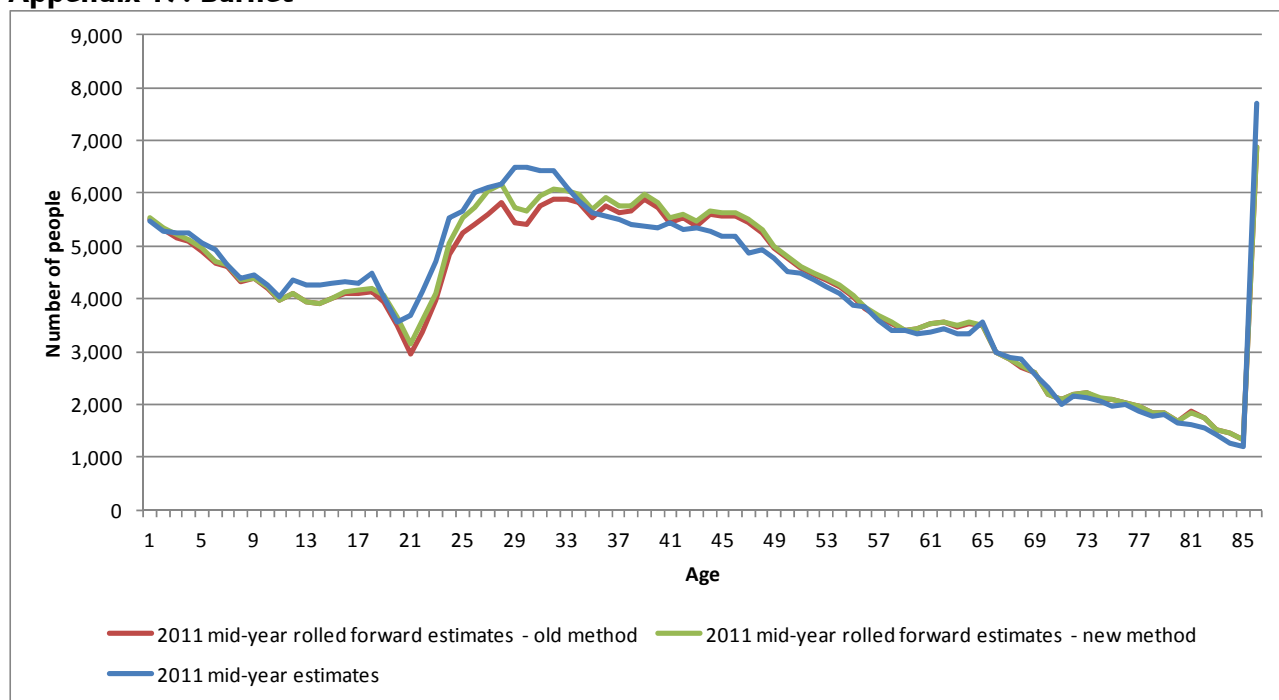
Appendix 15: Westminster



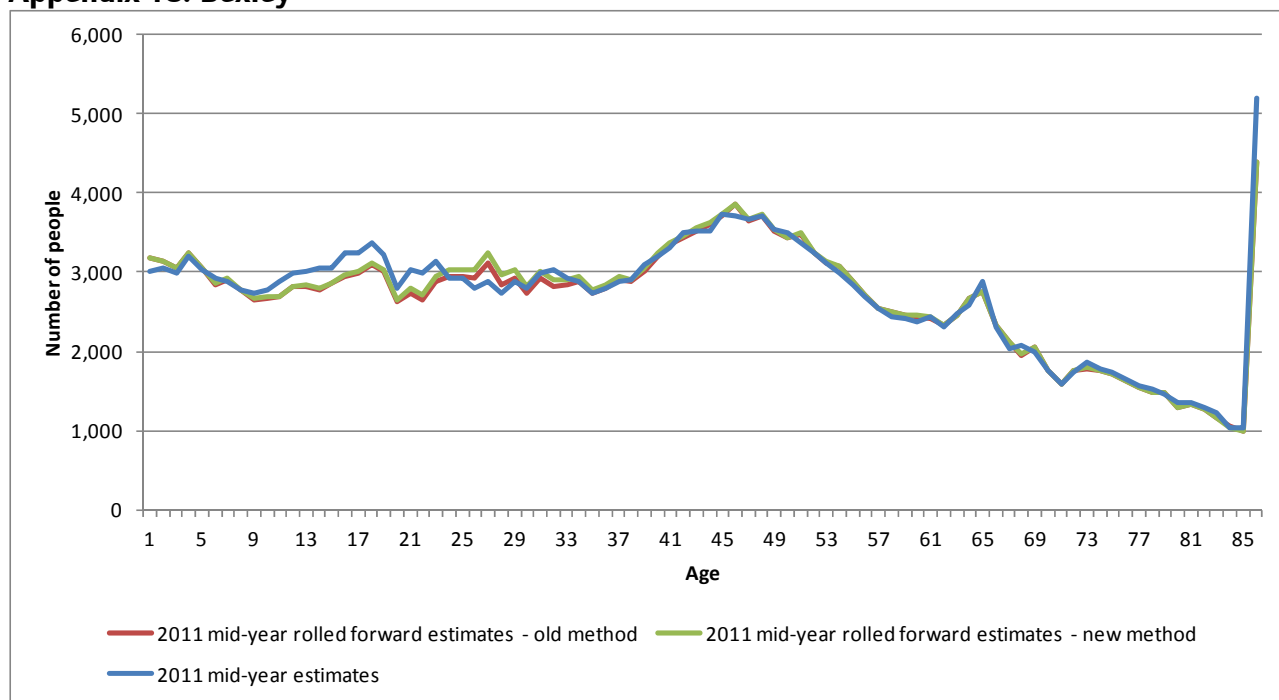
Appendix 16: Barking and Dagenham



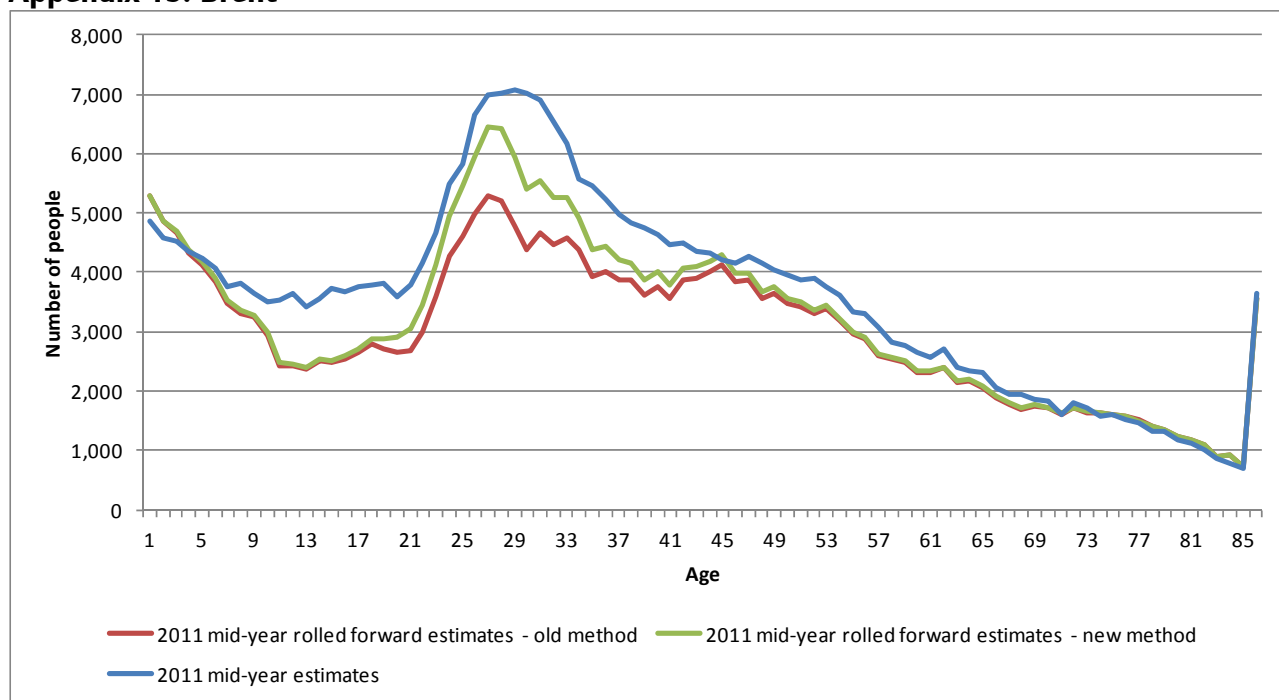
Appendix 17: Barnet



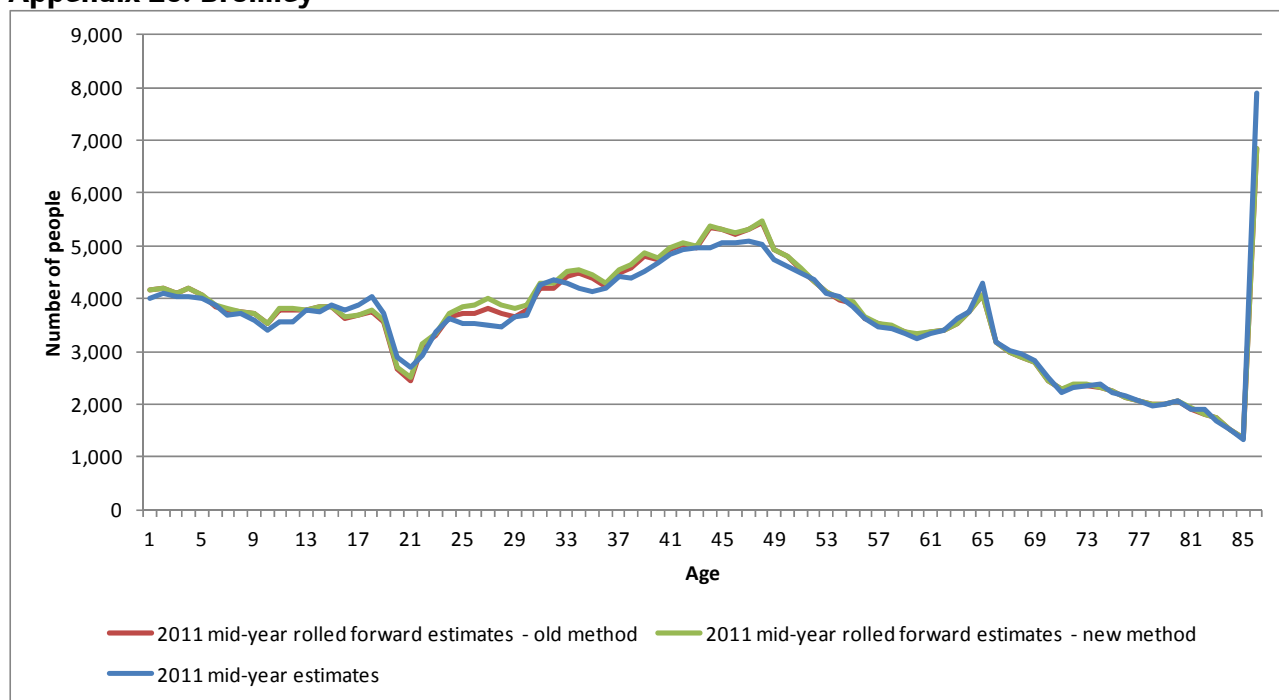
Appendix 18: Bexley



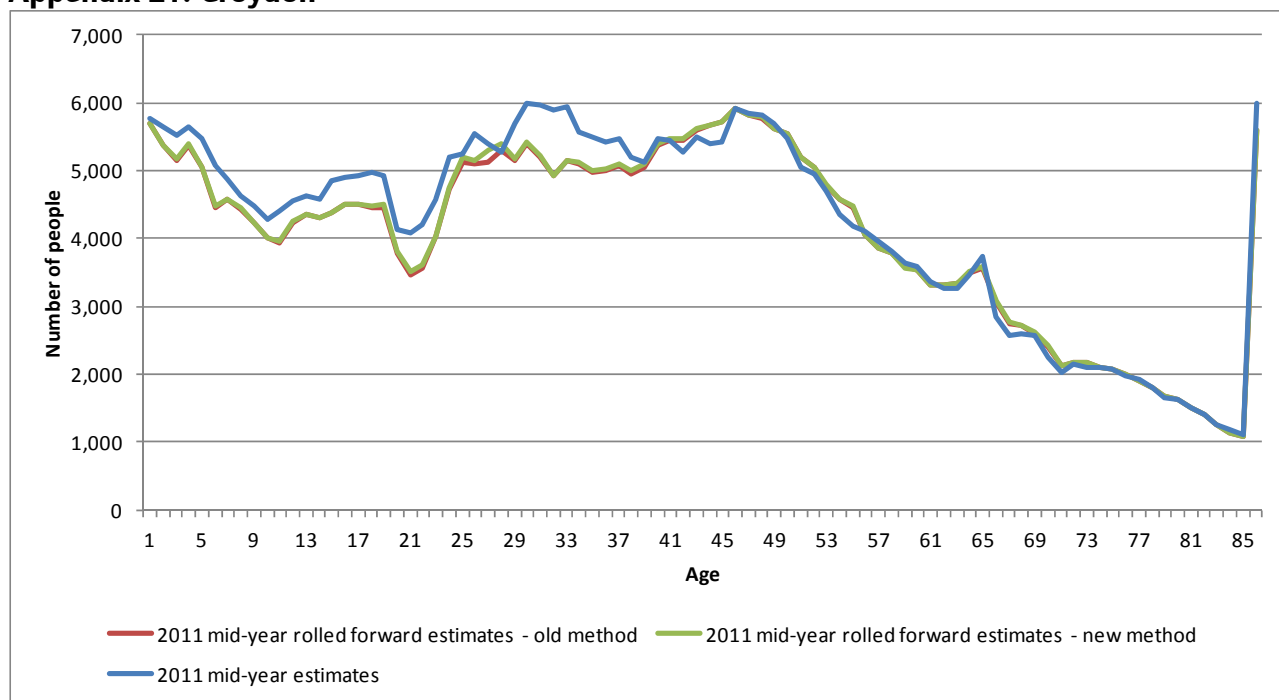
Appendix 19: Brent



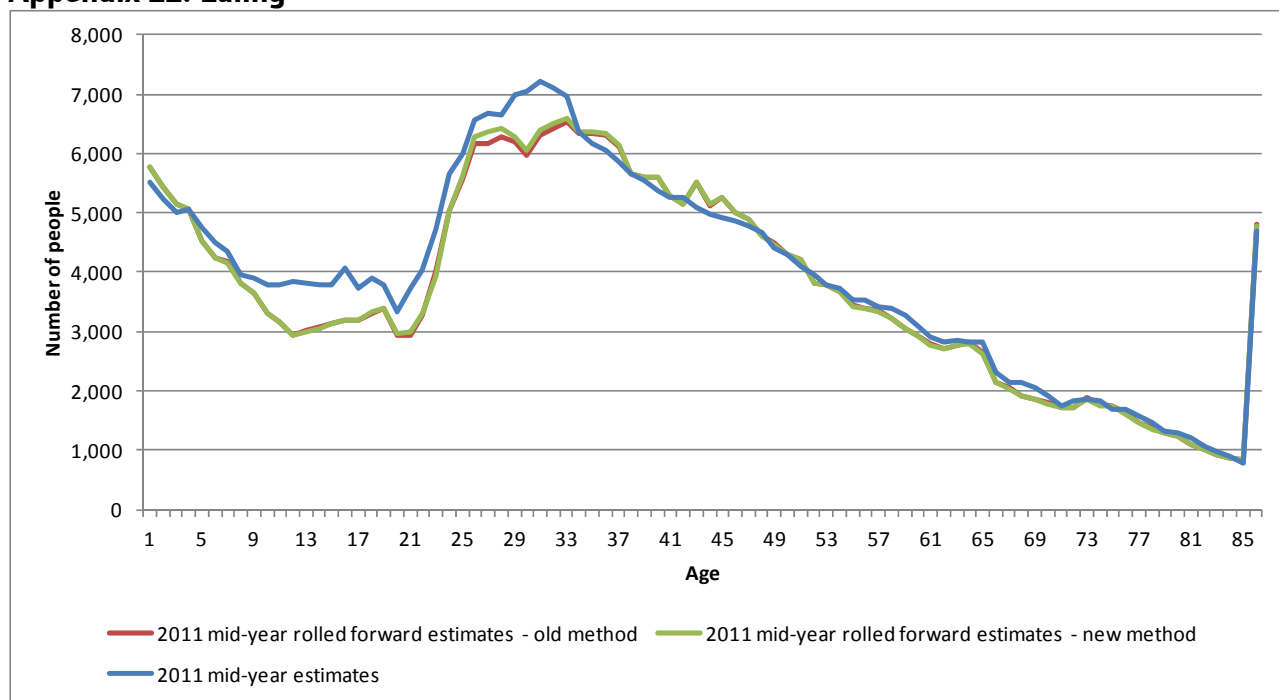
Appendix 20: Bromley



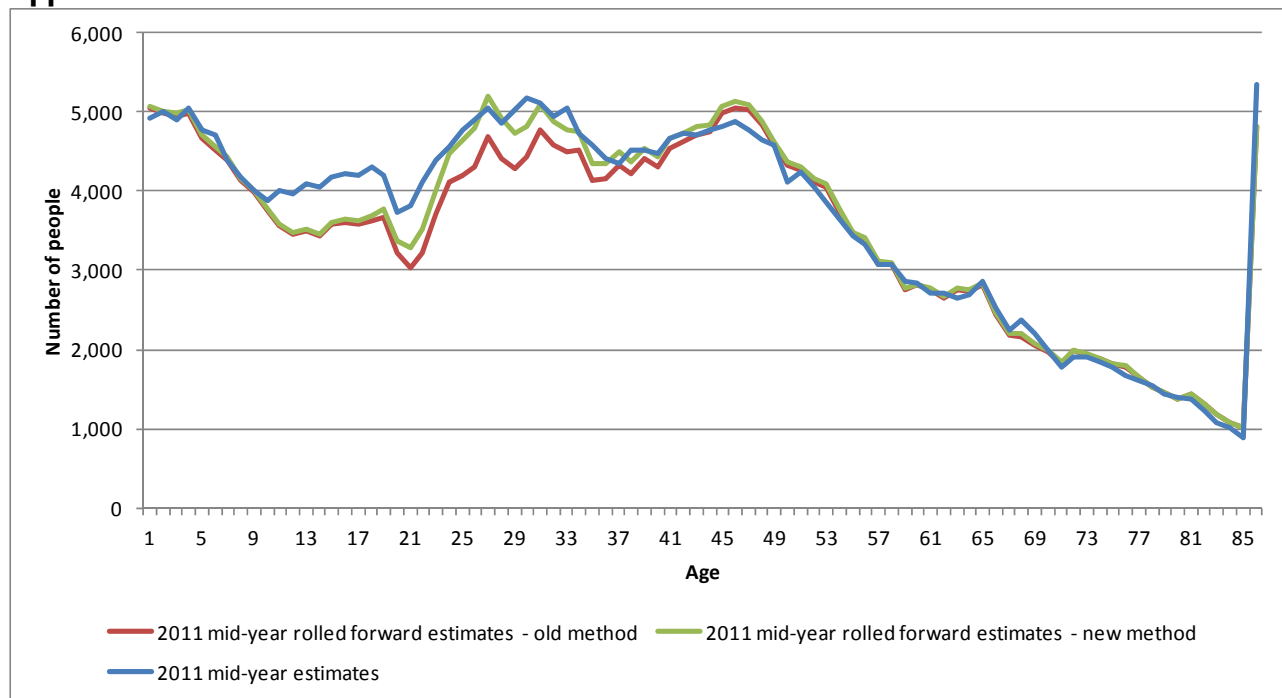
Appendix 21: Croydon



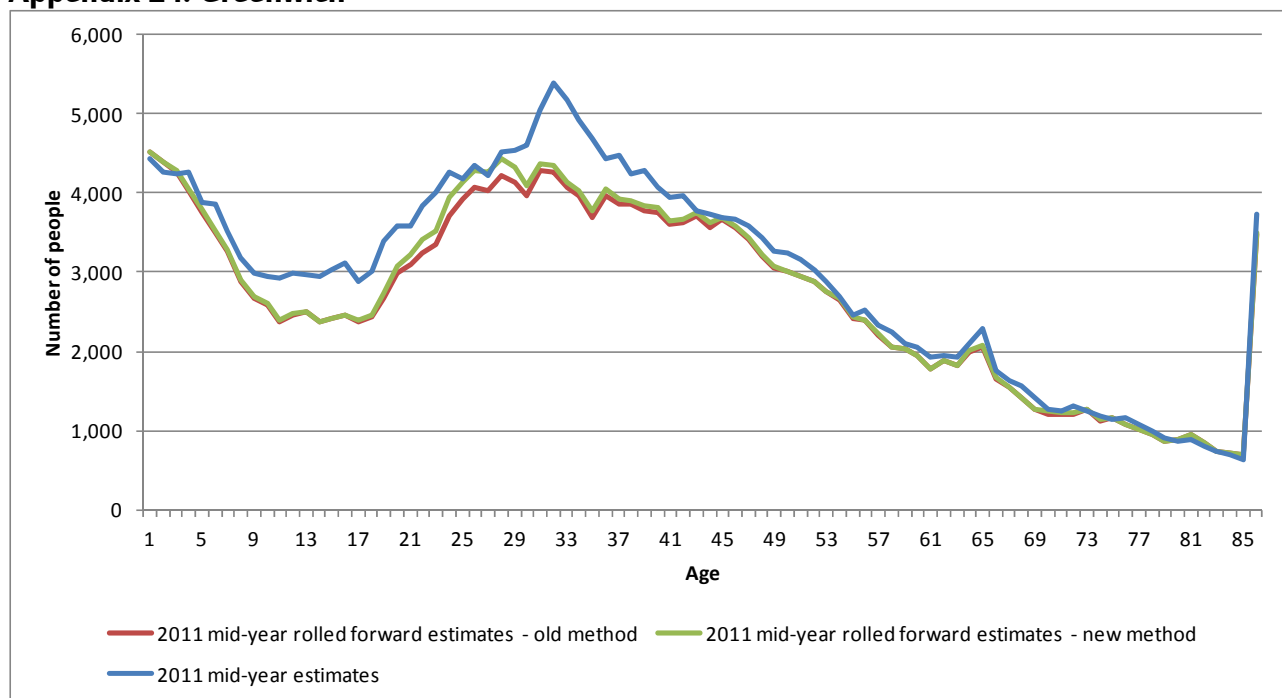
Appendix 22: Ealing



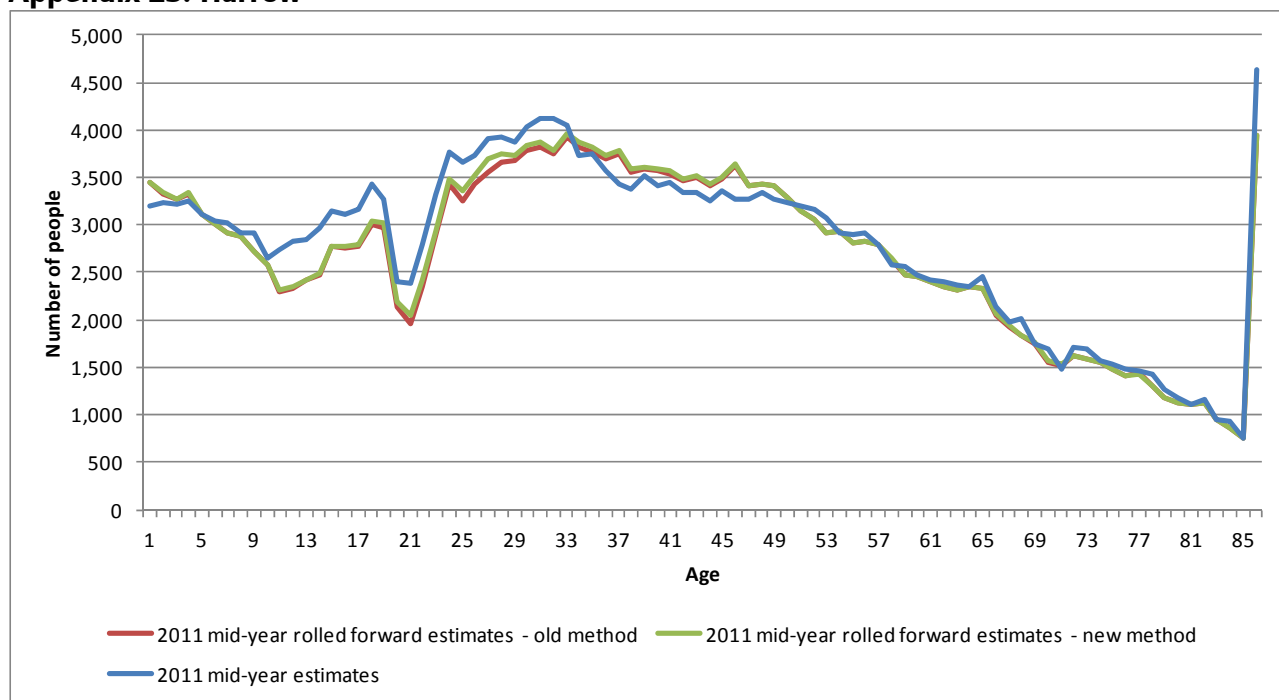
Appendix 23: Enfield



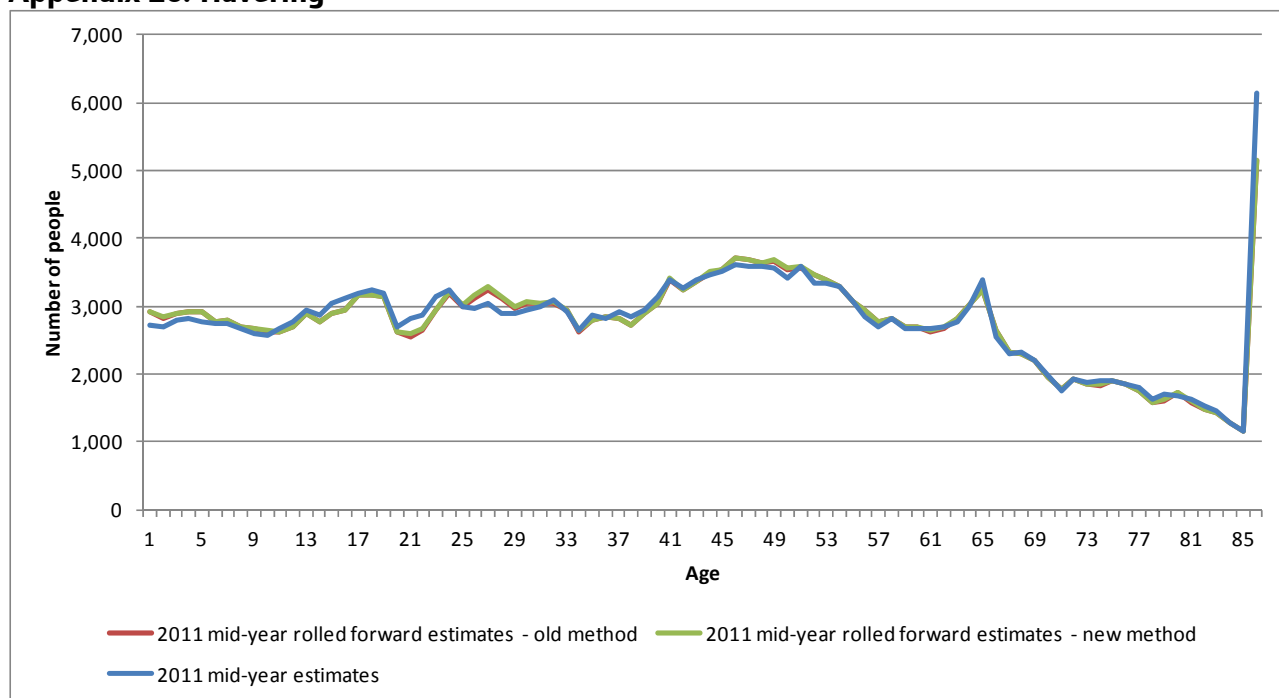
Appendix 24: Greenwich



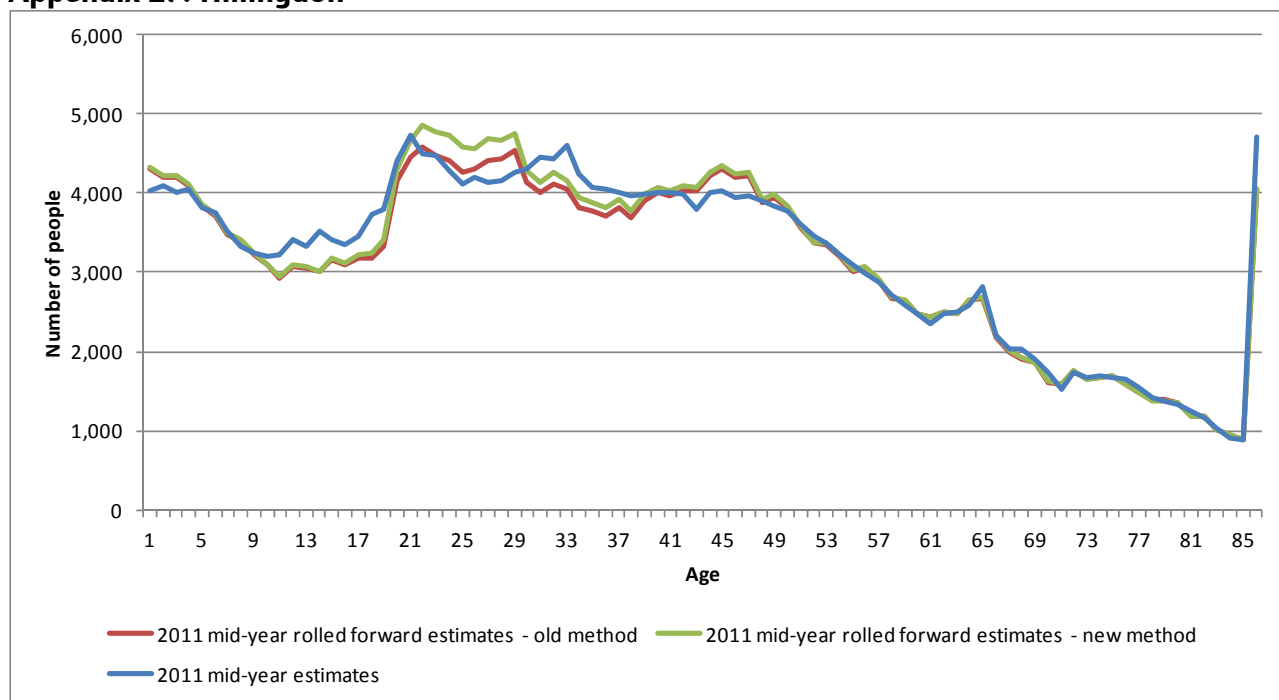
Appendix 25: Harrow



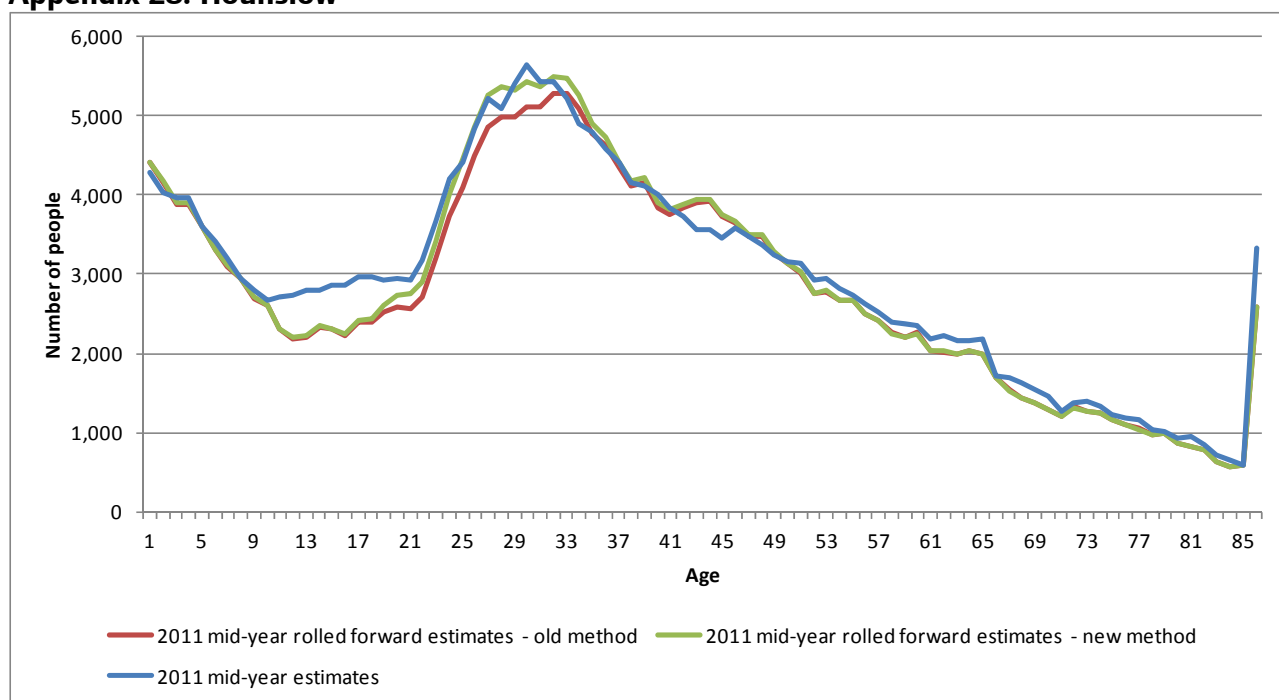
Appendix 26: Havering



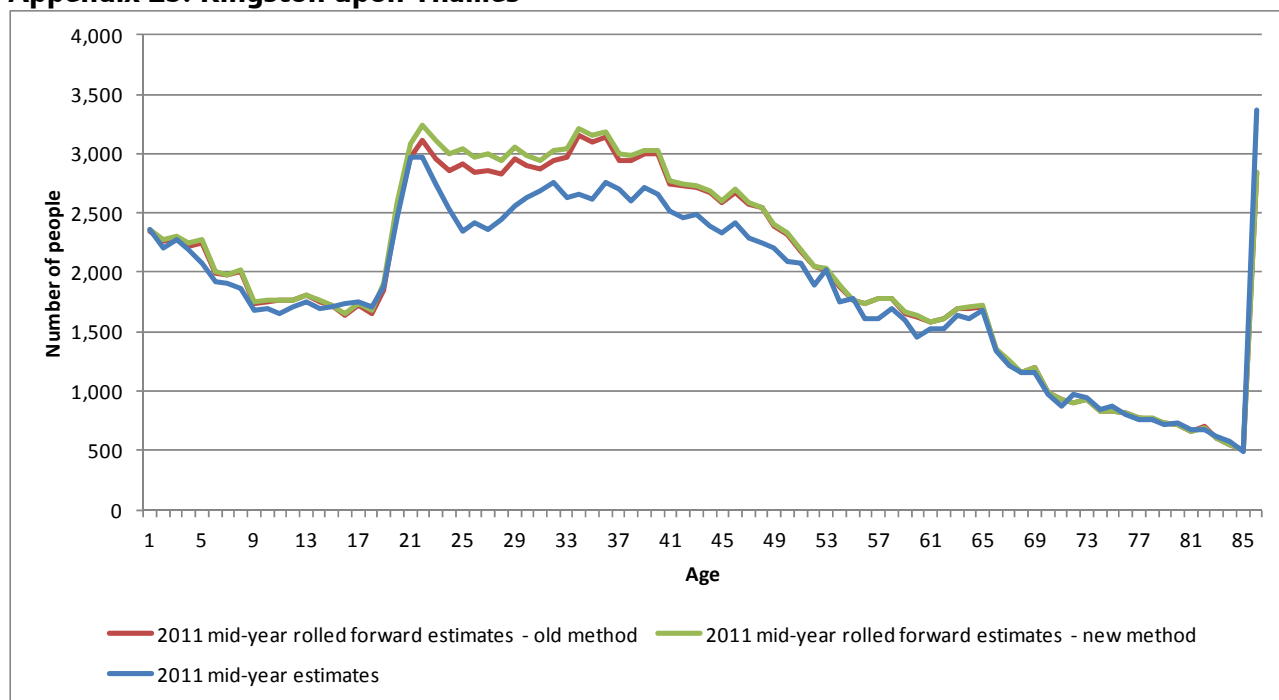
Appendix 27: Hillingdon



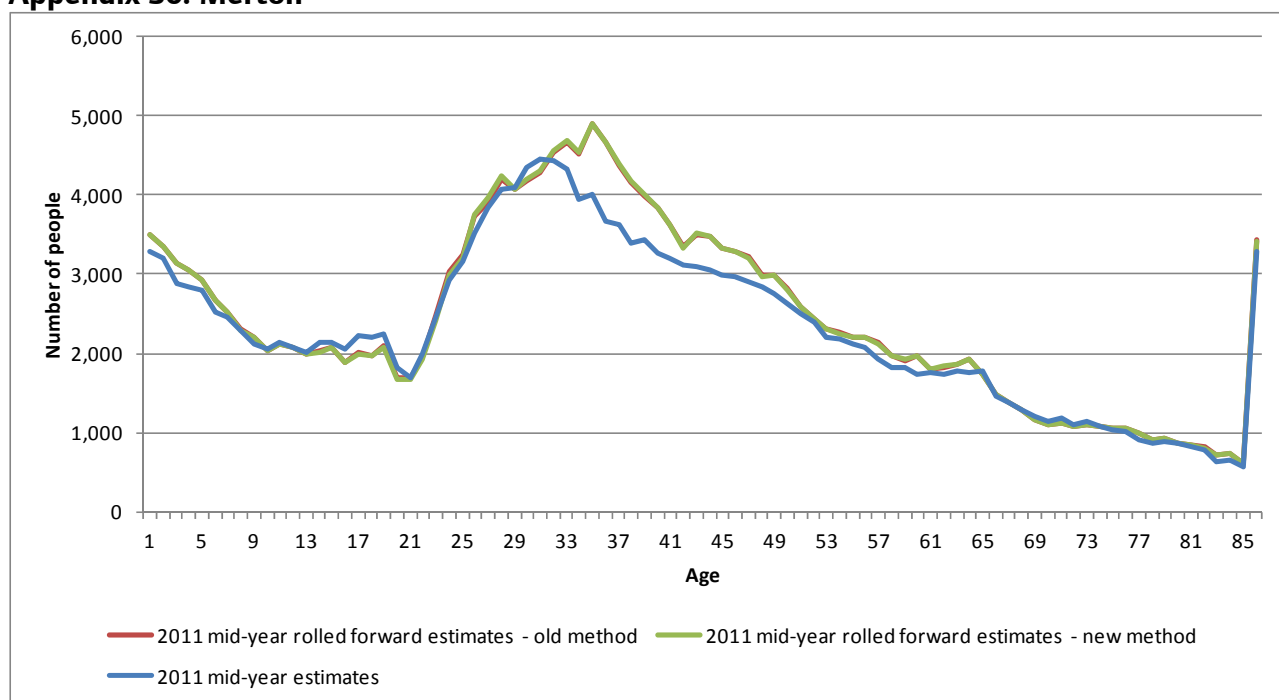
Appendix 28: Hounslow



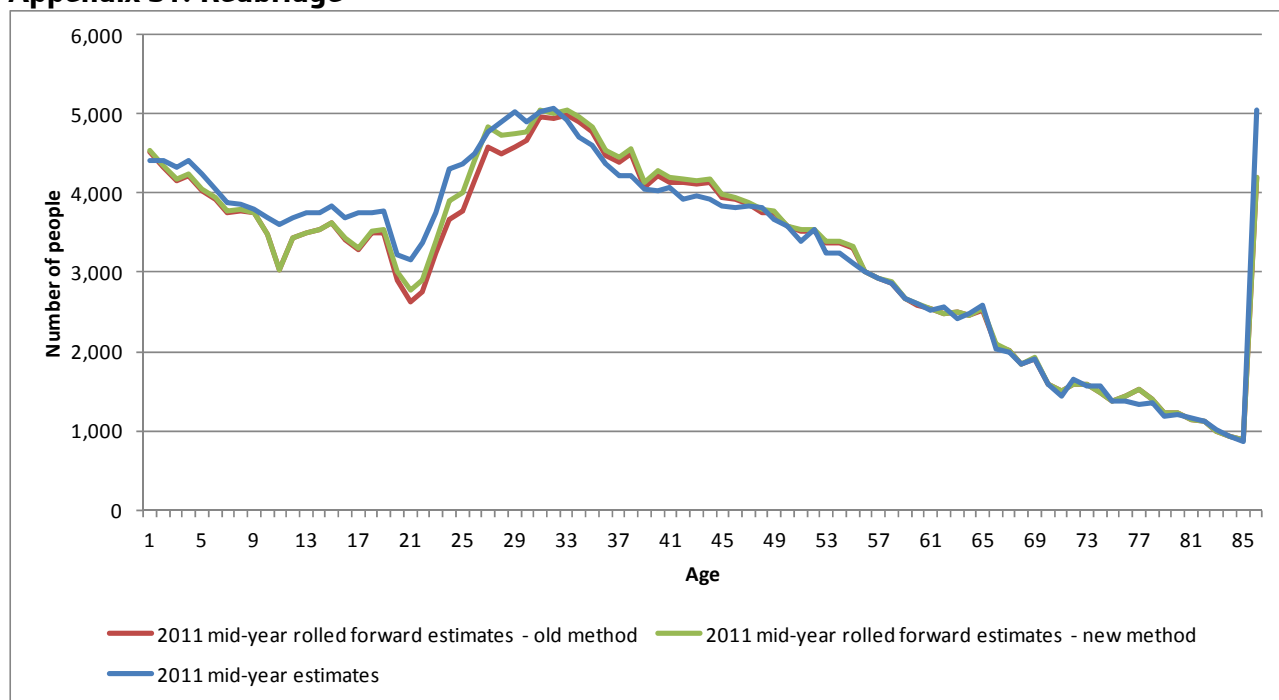
Appendix 29: Kingston upon Thames



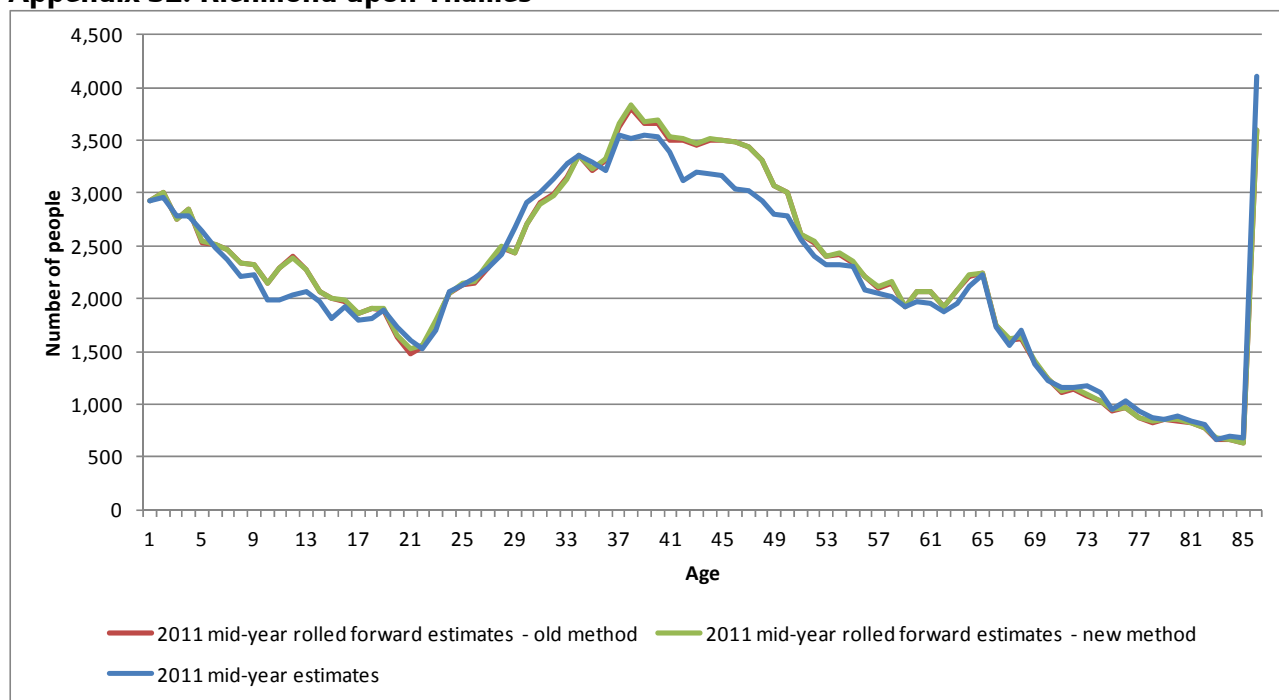
Appendix 30: Merton



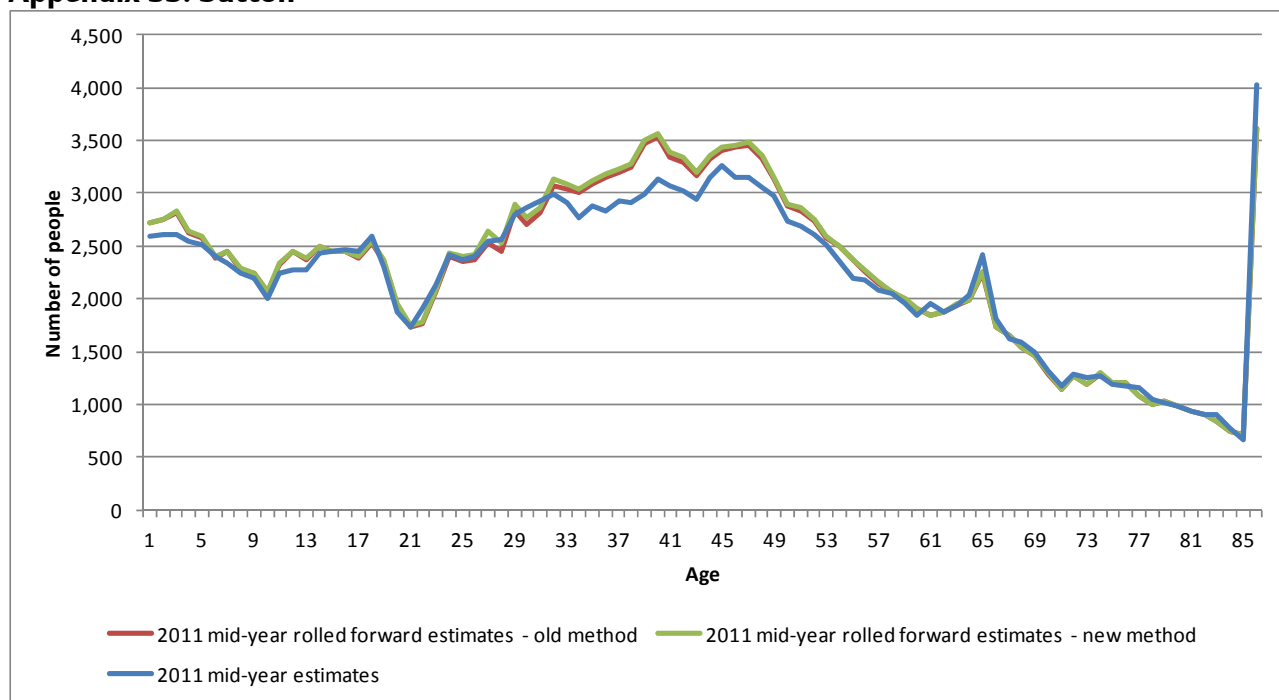
Appendix 31: Redbridge



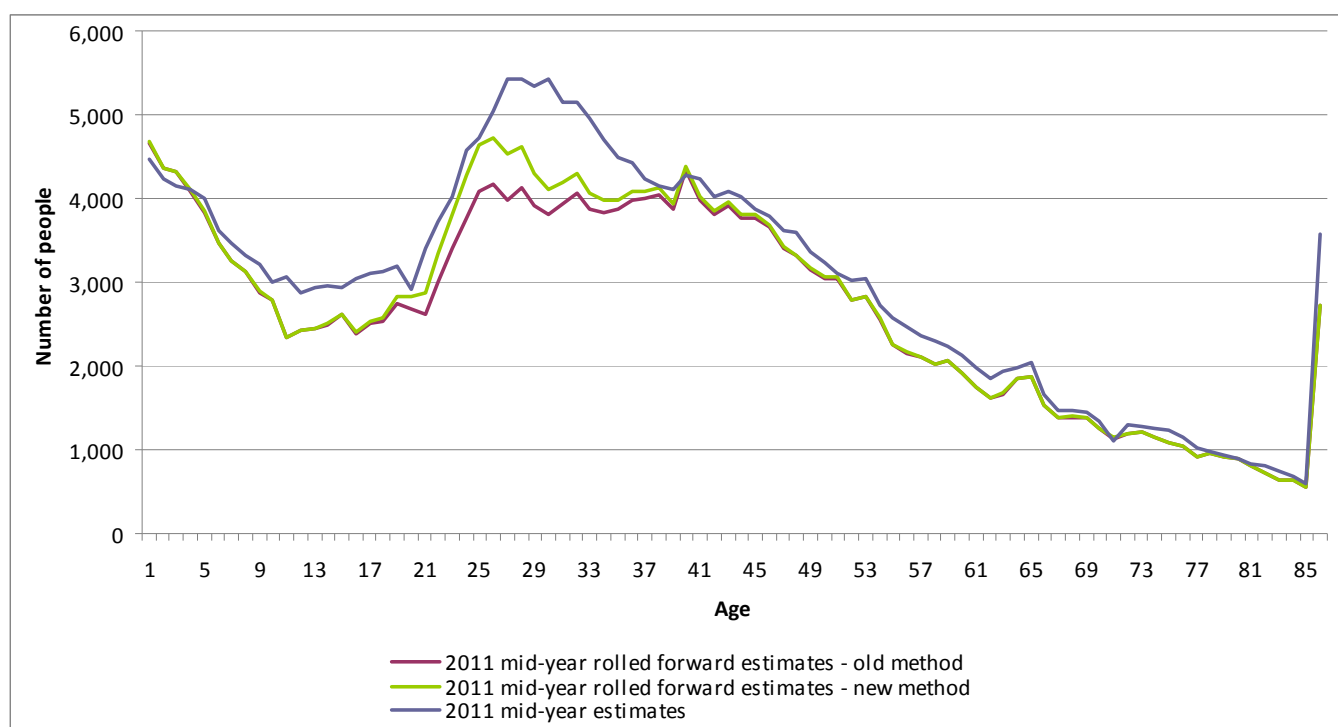
Appendix 32: Richmond upon Thames



Appendix 33: Sutton



Appendix 34: Waltham Forest



For more information please contact GLA Demography, GLA Intelligence
Greater London Authority, City Hall, The Queen's Walk, More London, London SE1 2AA
Tel:020 7983 4613 e-mail: intelligence@london.gov.uk