

GLA Demographic Modelling

East of England Demographic &
Housing Workshop

26 May 2017

Overview

- Origins
- GLA models
- Differences & Results:
 - ONS, DCLG, GLA
 - Migration
- How we can support authorities

Origins

- GLA population modelling for London since the 70s
- Why expand?
 - Demand from neighbouring authorities
 - Points raised at FALP EiP
 - Availability of data
 - More robust model / more transparent

Origins

PAS Guidance:

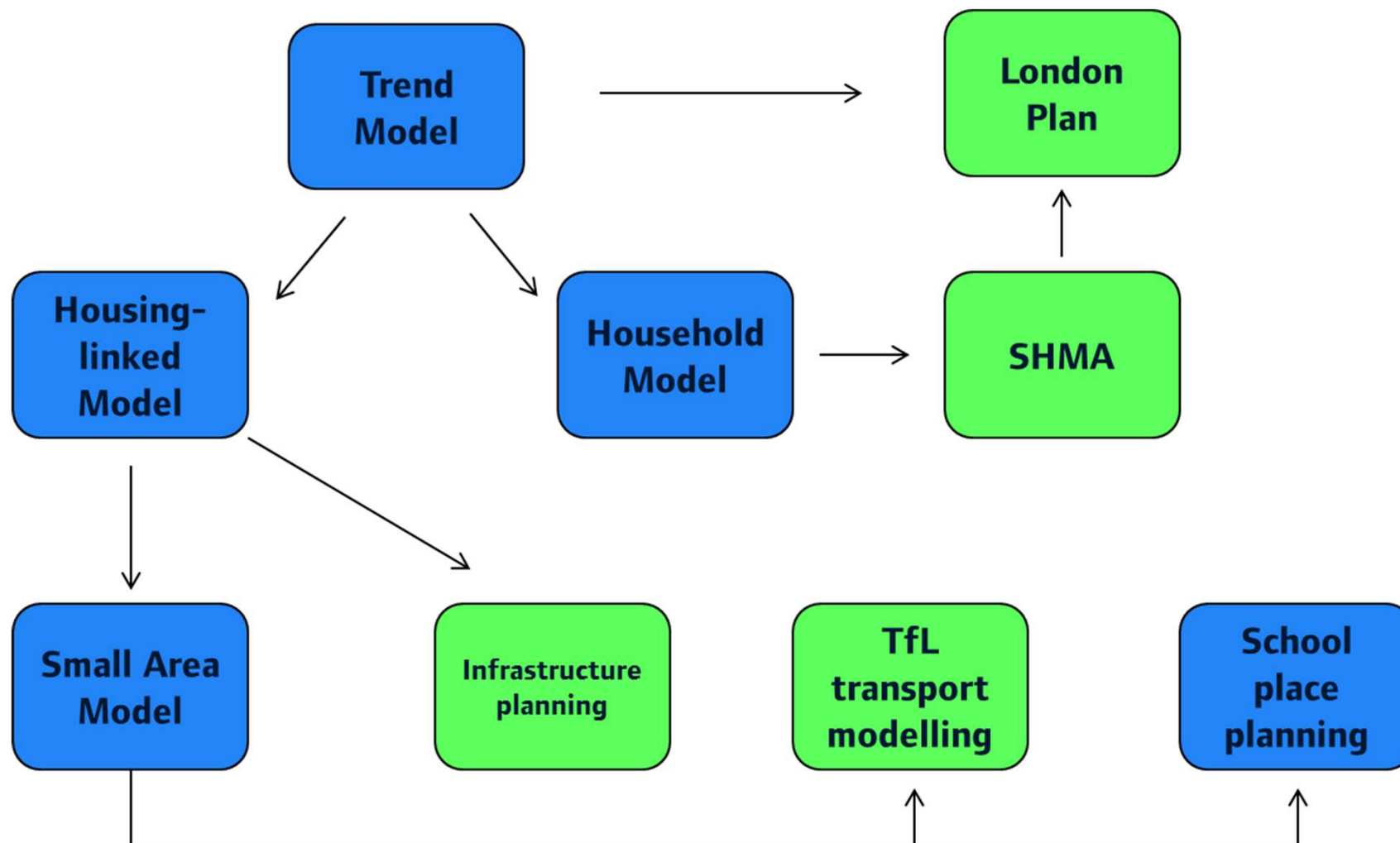
“Understanding the components of change and particularly the migration data going back as far as possible is very helpful and allows you to compare longer term rates with the more recent five or six-year trend.”

“It might be legitimate to vary the migration assumptions within the official projections if there is evidence to do so. However, any change in assumptions must be justified and set out as part of a transparent methodology.”

Planning on the Doorstep: Population

Context

GLA Models



GLA Models

- Central Trend
- Short-term Trend
- Long-term Trend

- Population & Households
- Components of Change

Releases

Currently available:

- 2015-based GLA projections
- 2014-based ONS & DCLG projections

Next releases:

- ONS 2016 mid-year estimates: 22nd June
- GLA 2016-based projections: Week of 10th July
- ONS 2016-based projections: Summer 2018

Results & Differences

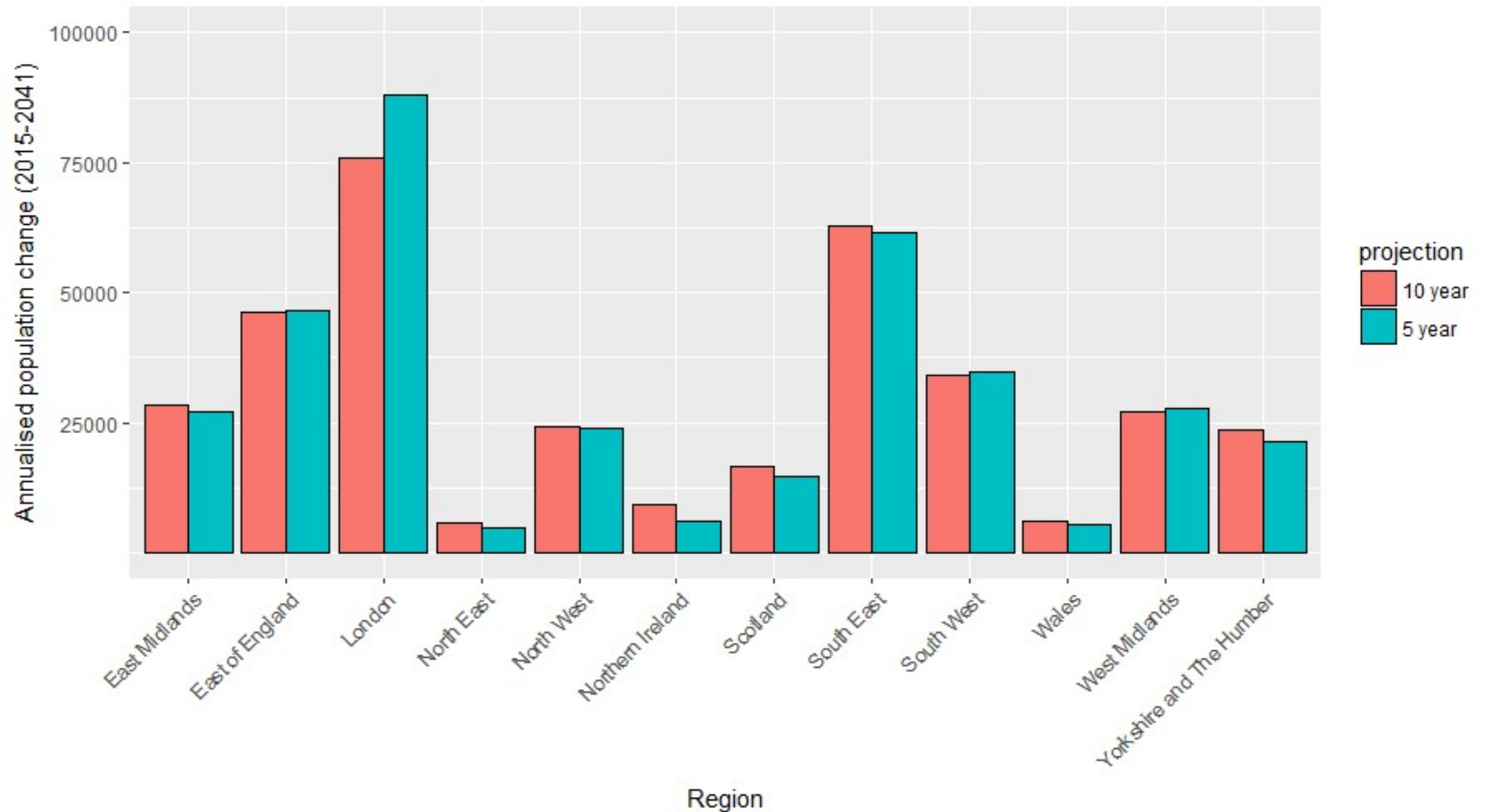
ONS & GLA: Differences

- Regional migration constraining
- National constraining
- Migration backseries

Model	Domestic	International
ONS	5	6
GLA Short	5	5
GLA Central	10	10
GLA Long*	15	15

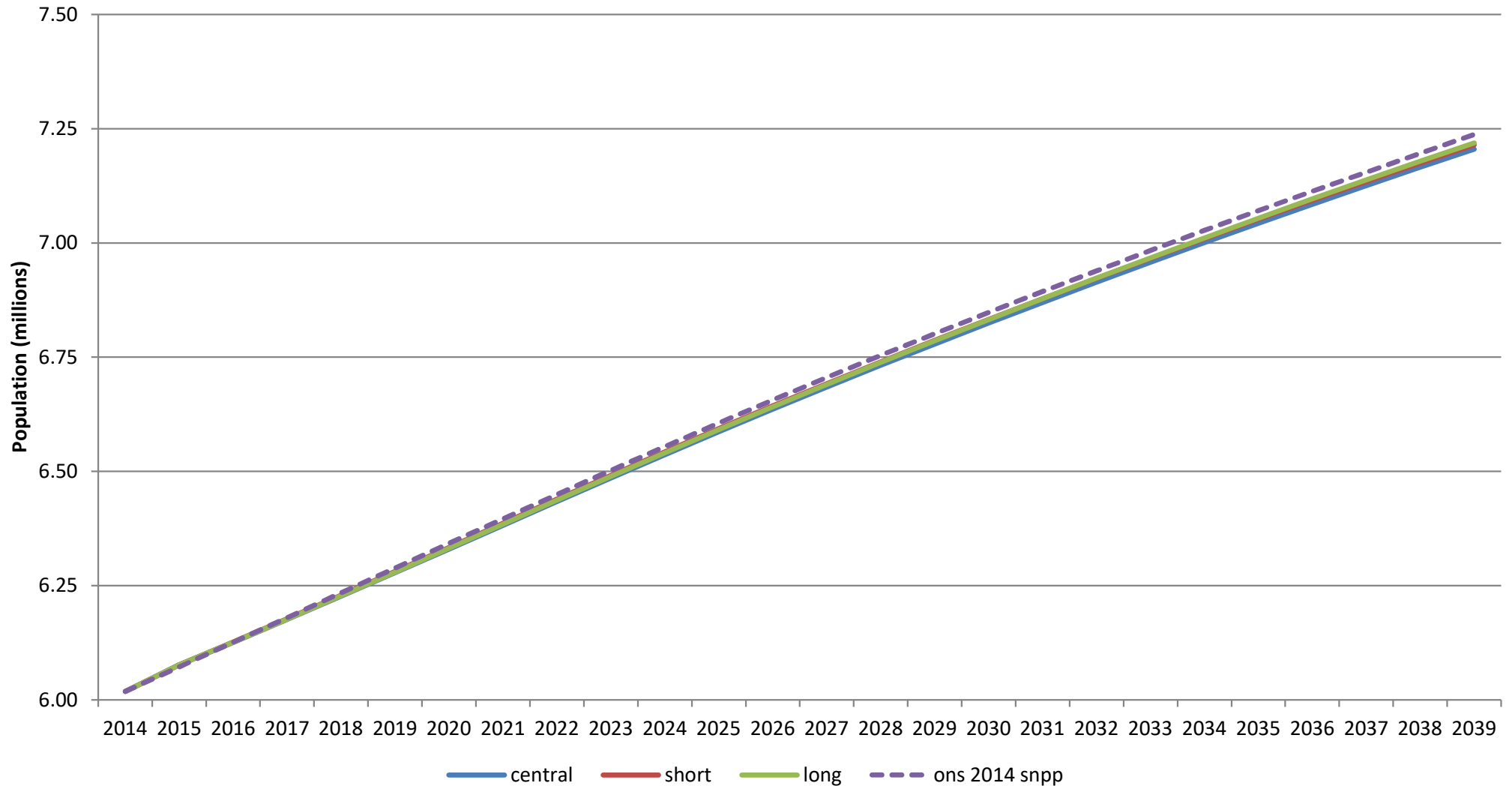
*2015-based 14 years

Trend model: national results



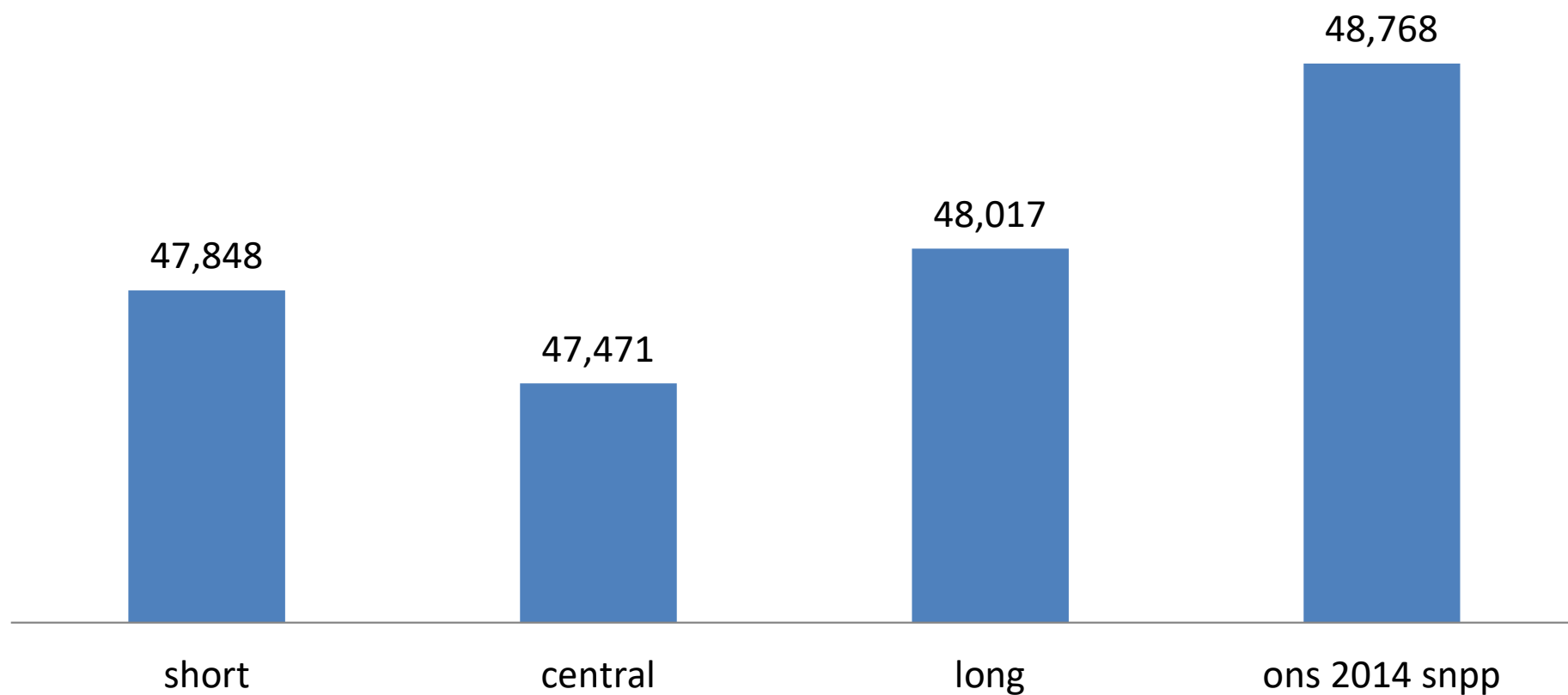
ONS & GLA: Projections

Projected population of East of England



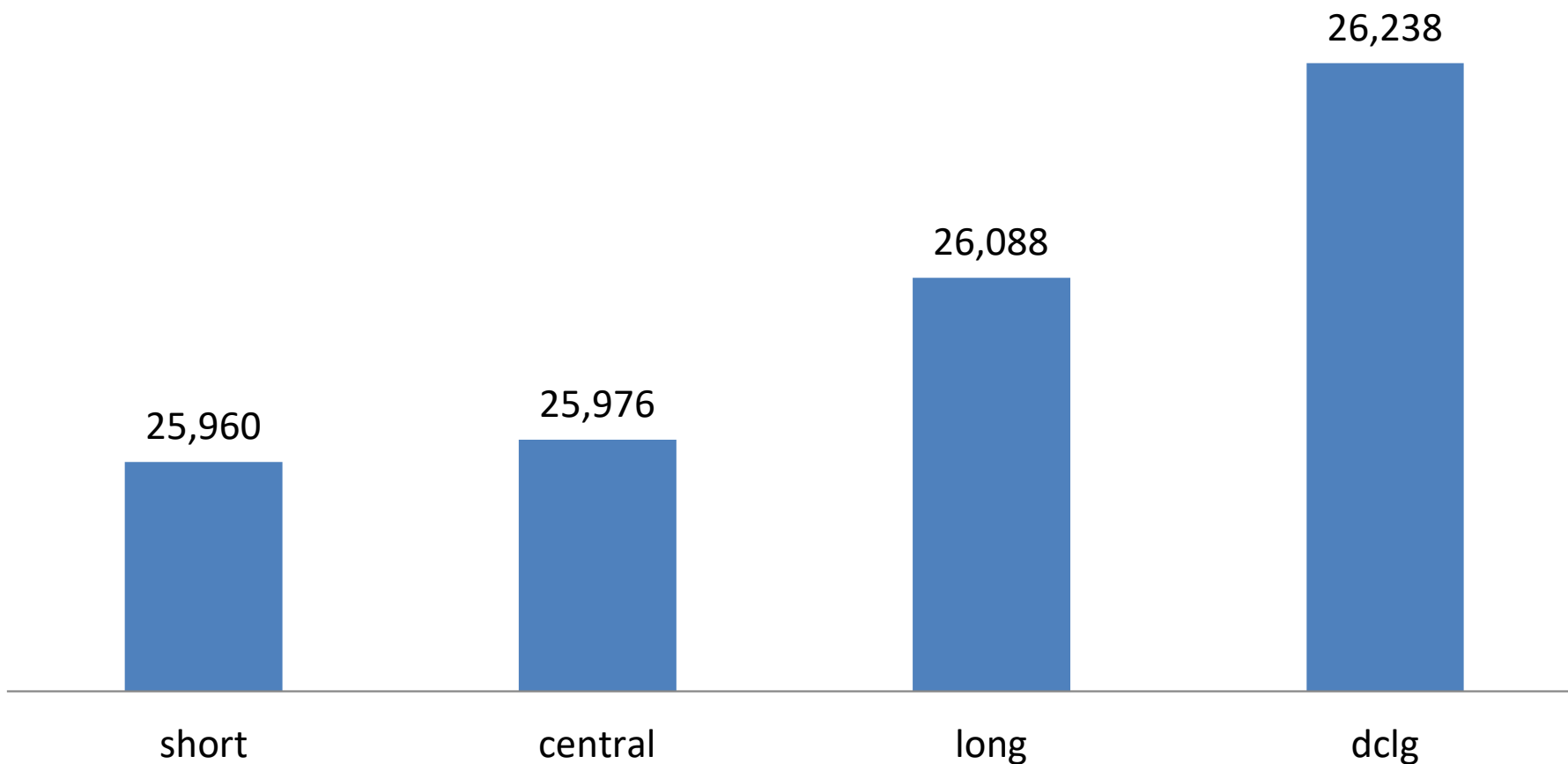
ONS & GLA: Projections

Annualised population growth 2014-2039
East of England



DCLG & GLA: Projections

Annualised household growth 2014-2039
East of England



Age Structure

East of England, 2039



Migration

Avg. Net Flows (2009-13)



Average Migration flows

Average 2006-2015 (actuals)

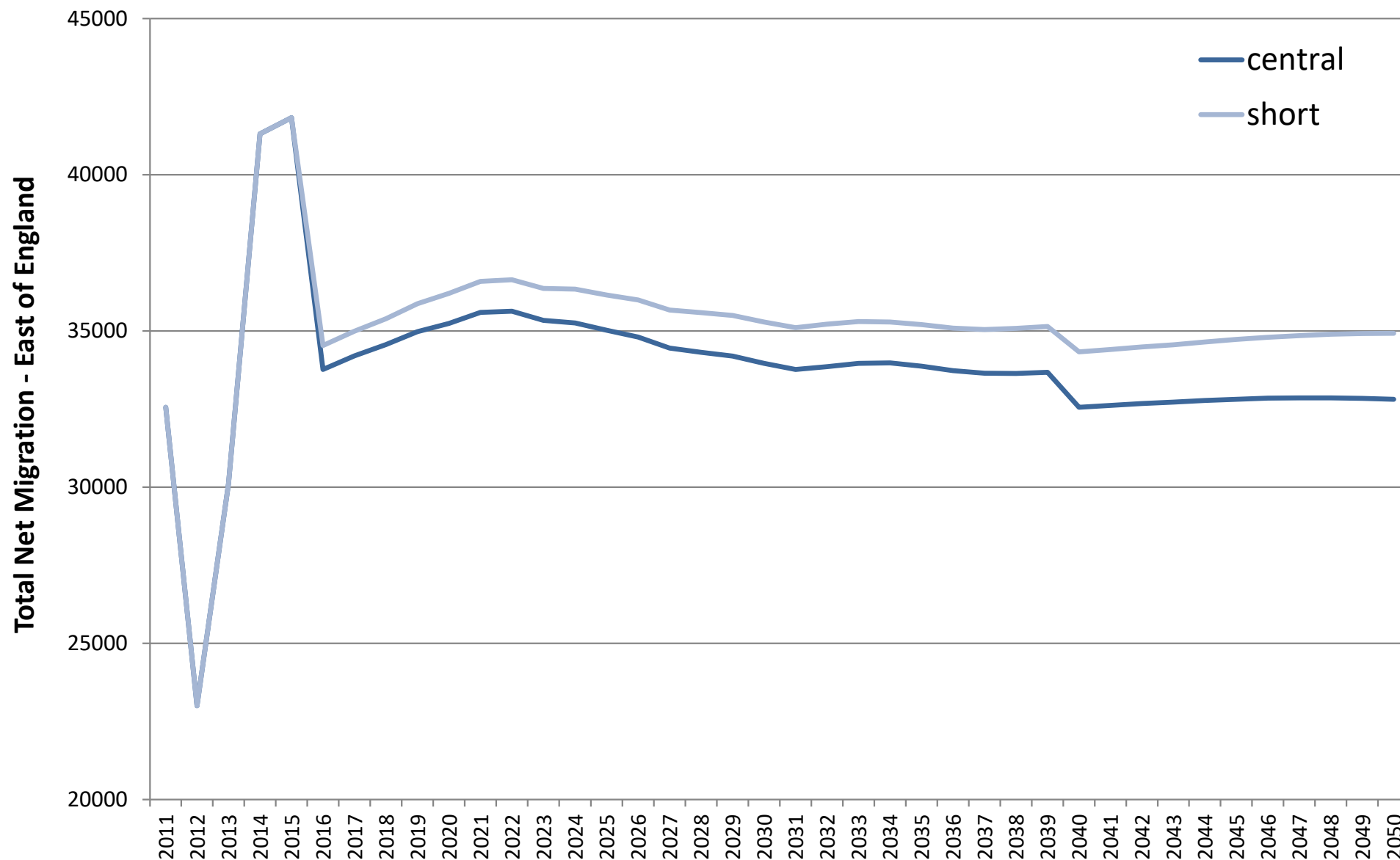
	South East Region	London	Rest of UK & Overseas	Total
In to East from	28	64	103	195
Out of East to	31	36	97	164
Net	-3	28	6	31

Average 2016-2041 (central trend)

	South East Region	London	Rest of UK & Overseas	Total
In to East from	31	75	107	213
Out of East to	34	39	106	179
Net	-3	36	1	34

Flows are thousands

East of England net migration



Documentation & Support

Methodology & Documentation

- Methodology documentation for all GLA models is available on the London Datastore:

<https://data.london.gov.uk/demography/population-projections/>

- University of Southampton independent review:

<https://data.london.gov.uk/dataset/projection-methodology-independent-review>

Supporting LAs

- There is **demand for variant projections** but no ONS commitment to their production
- We offer **unbiased output** using a comparable model
- Housing-led modelling: Potential for joint projects using **local housing trajectories**
- UPC: ability to include different **upc scenarios**