

Population projections for the London Plan 2010

BSPS day meeting
7 July 2010



Overview

London Population: (1801-1971-)2001-2008

Change Analyses and Trends

Projections for the London Plan

Data

Assumptions

Results

Age Structure

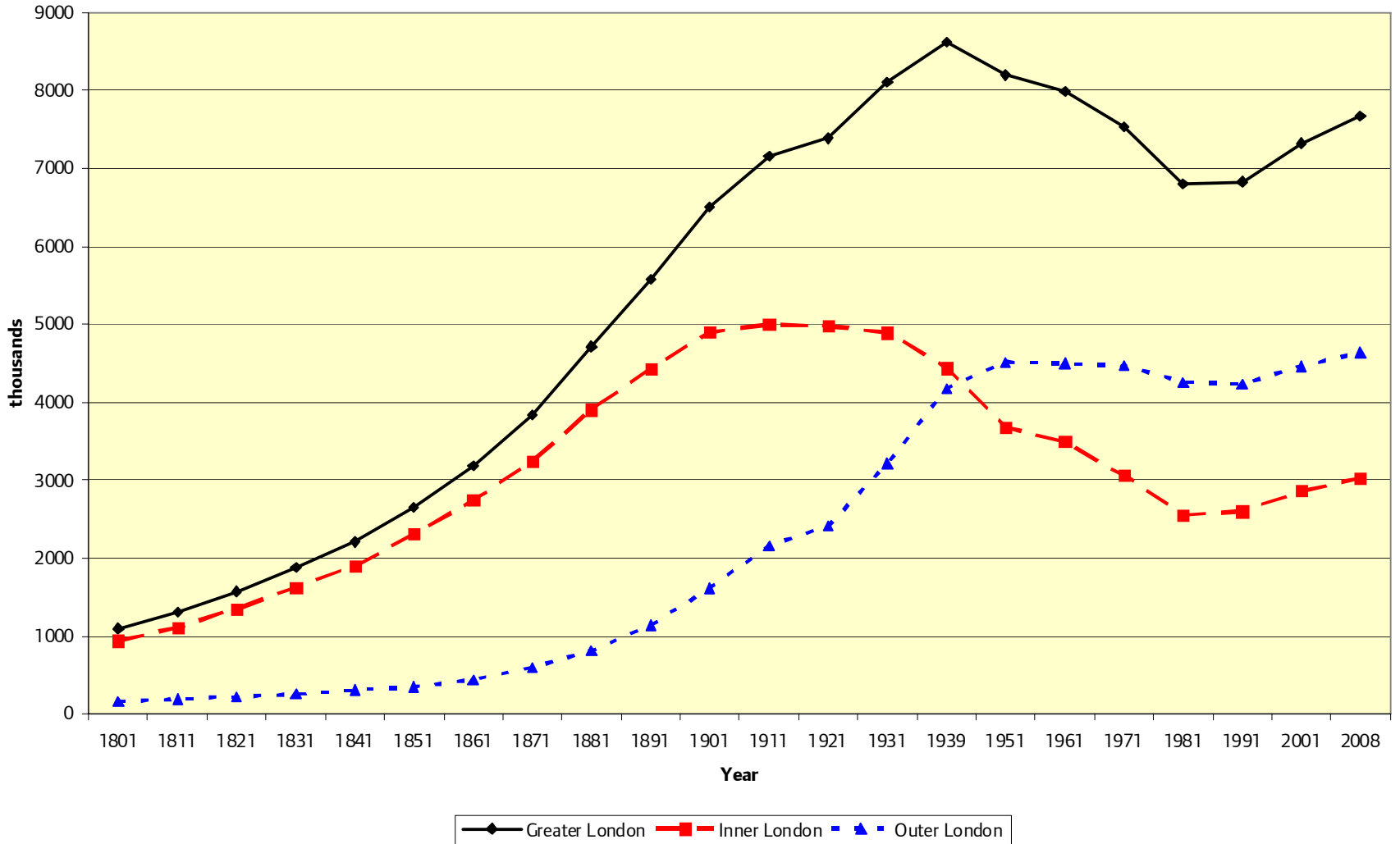
Households

Labour Force

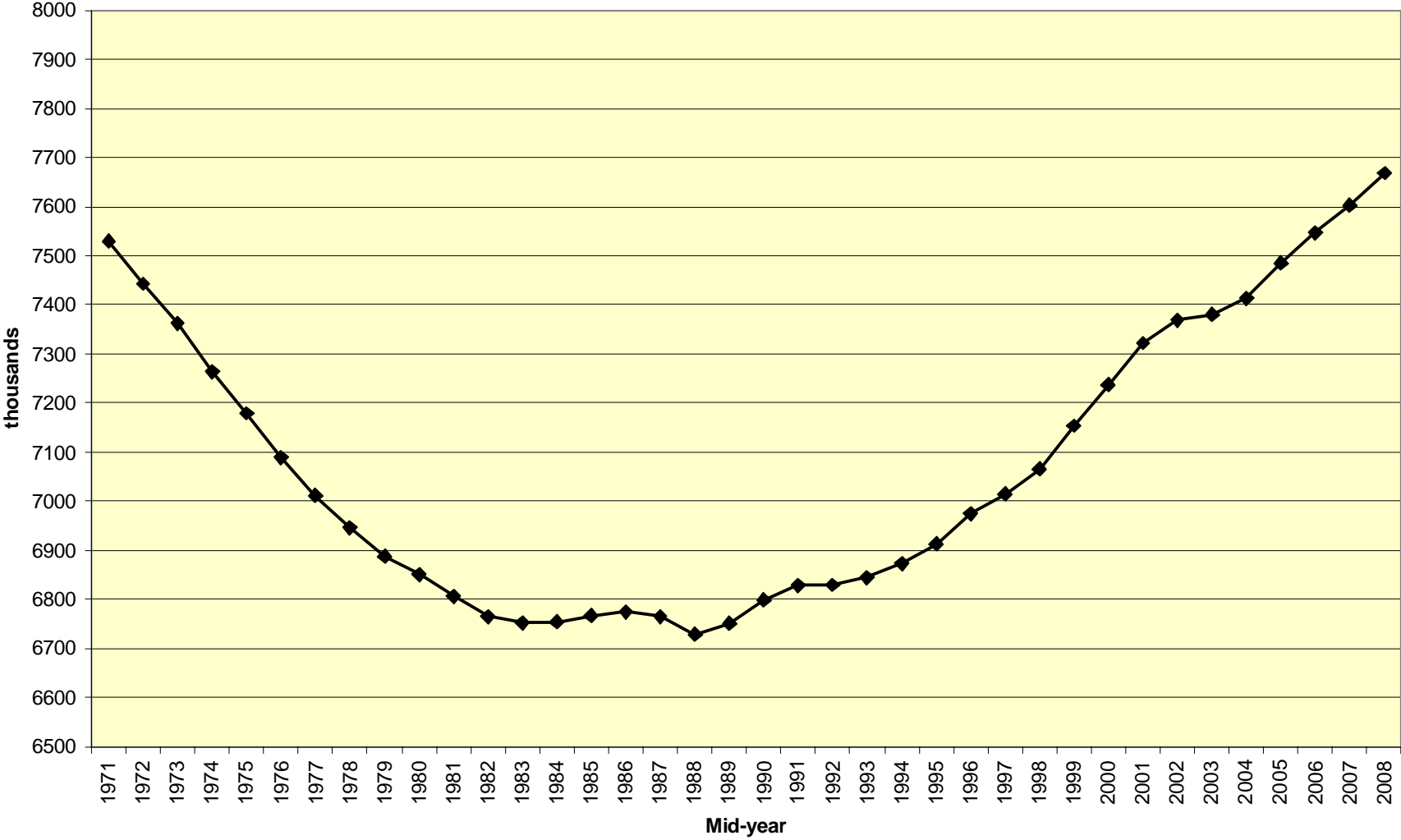
Borough Distribution

Ethnicity

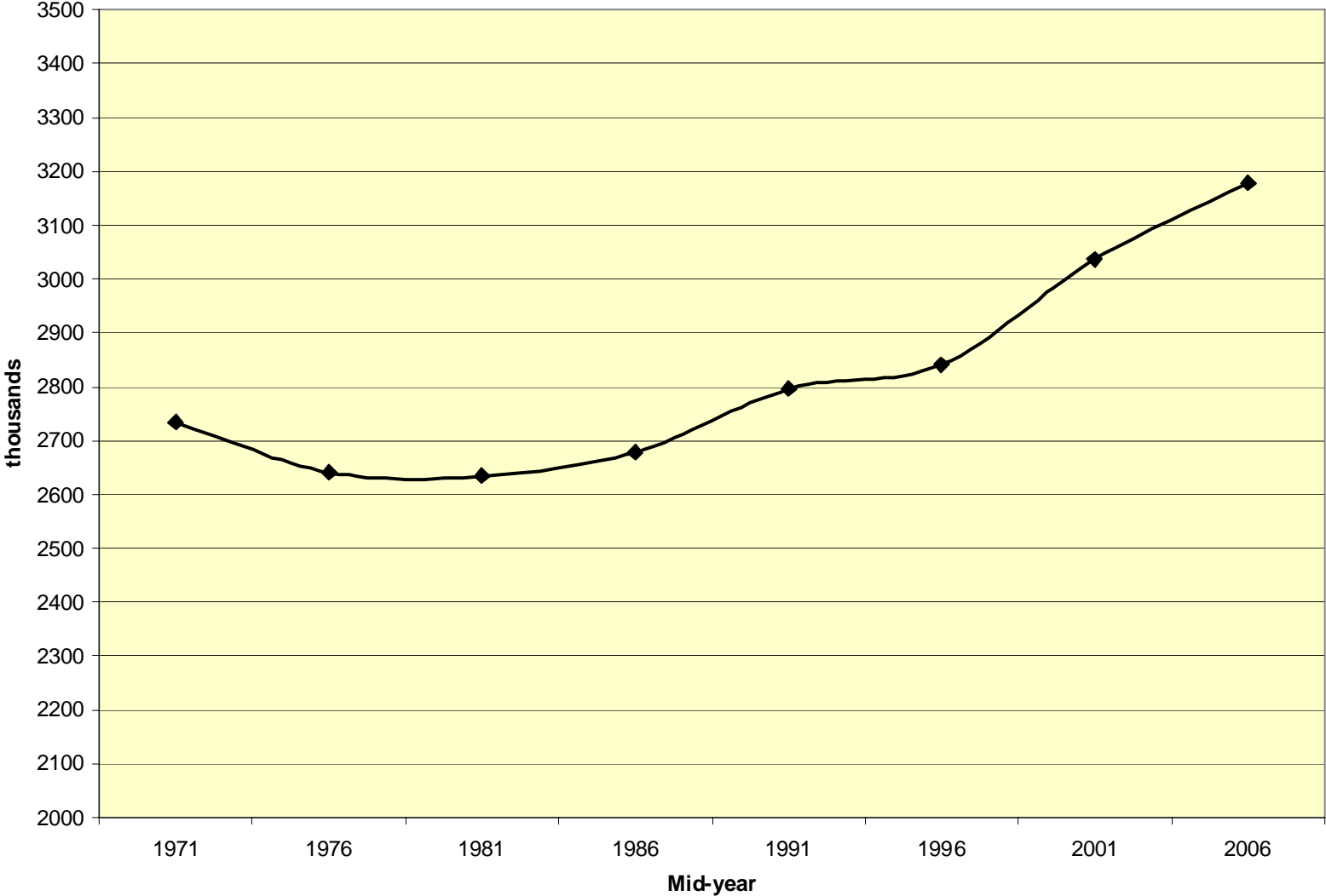
Population: 1801-2008



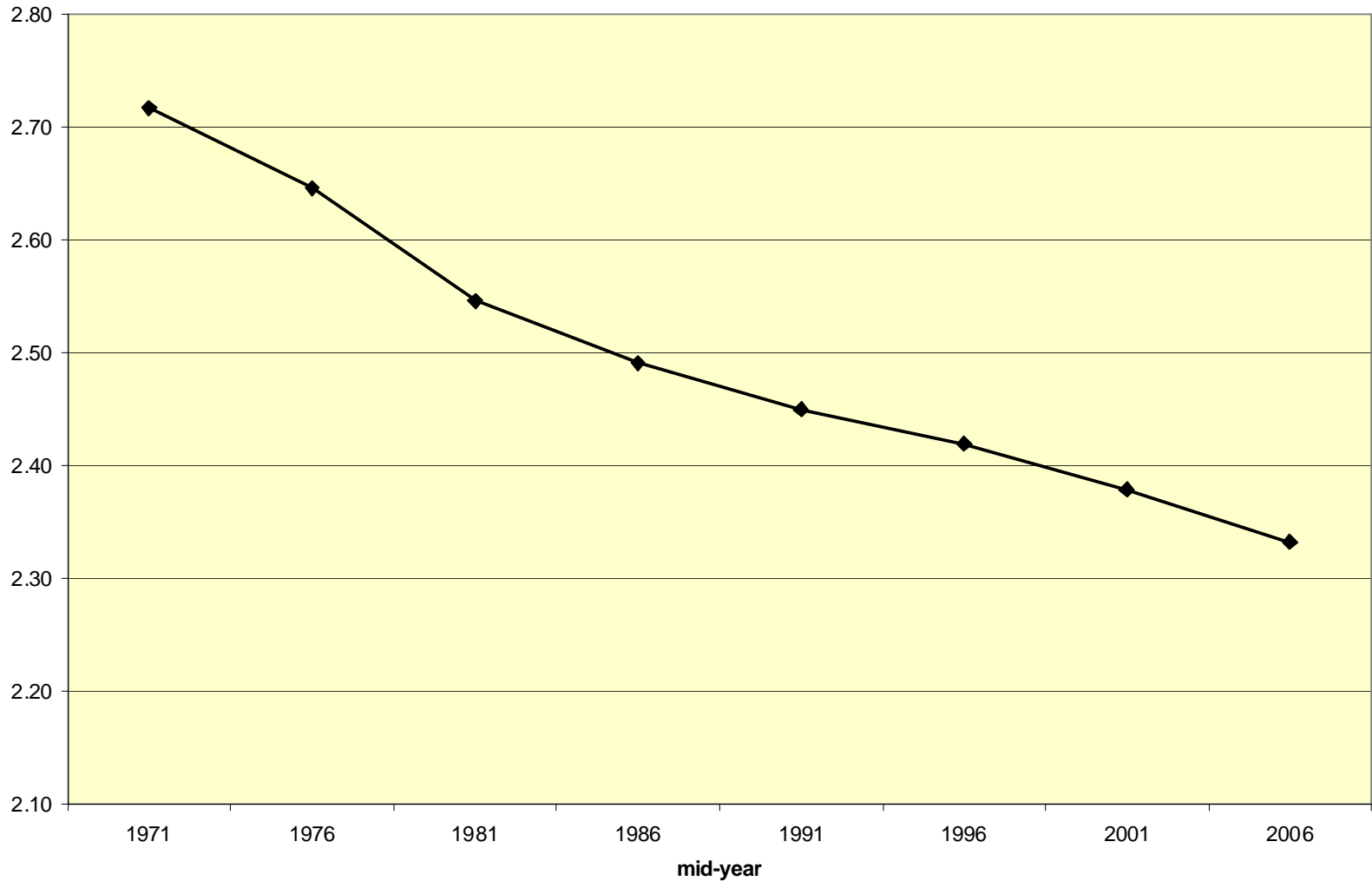
Population: 1971-08



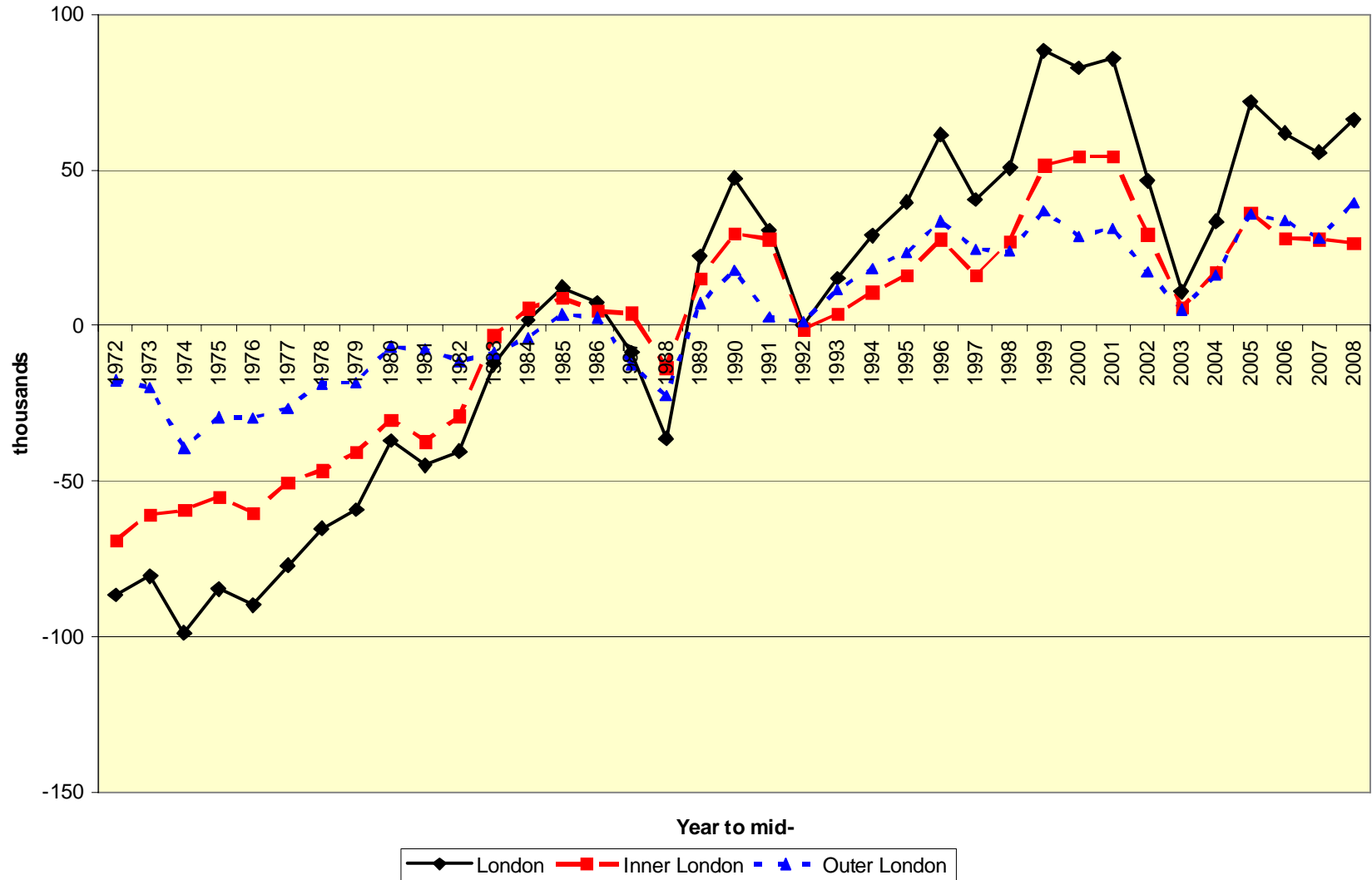
Households: 1971-06



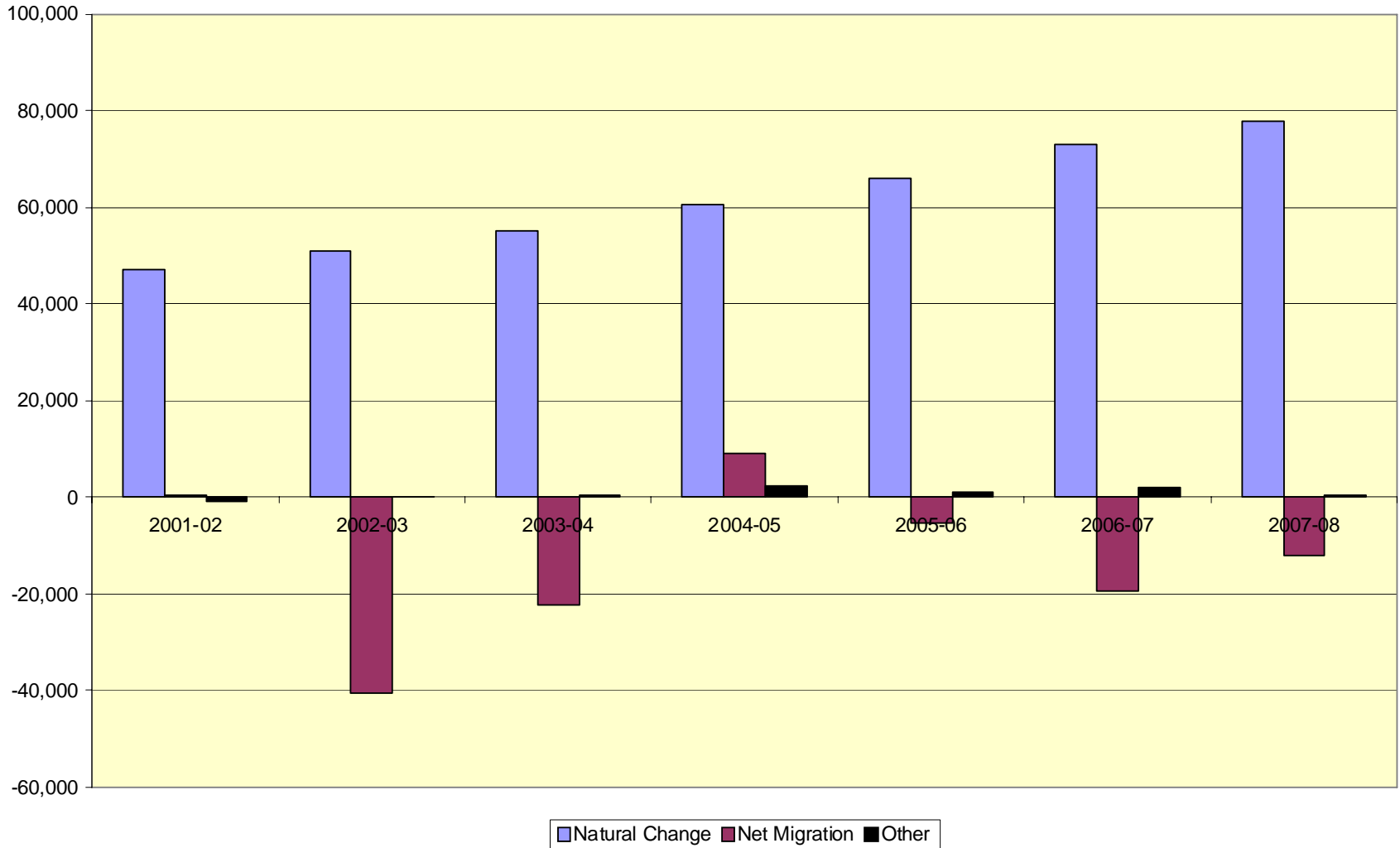
Average Household Size: 1971-06



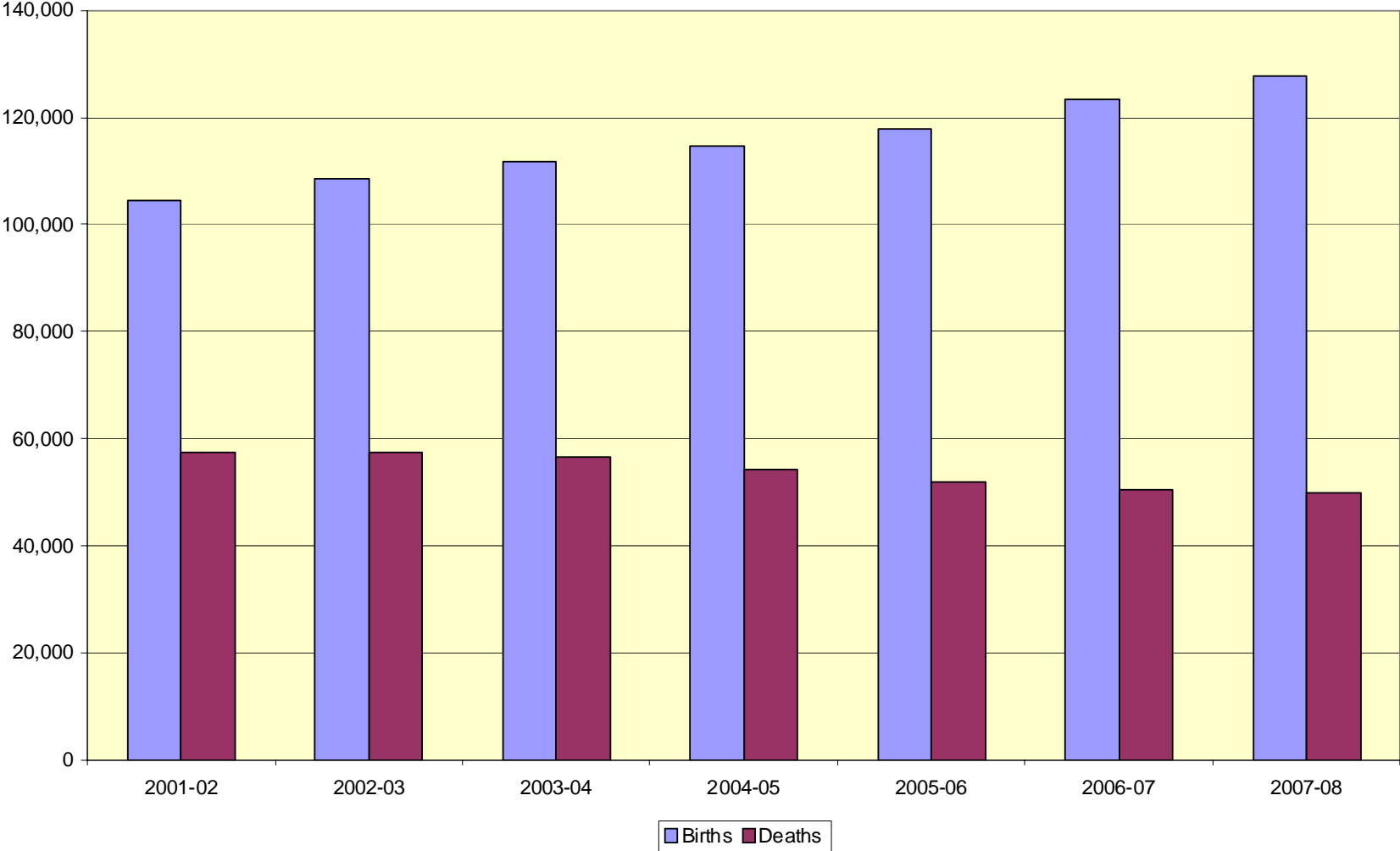
Population Change: 1971-08



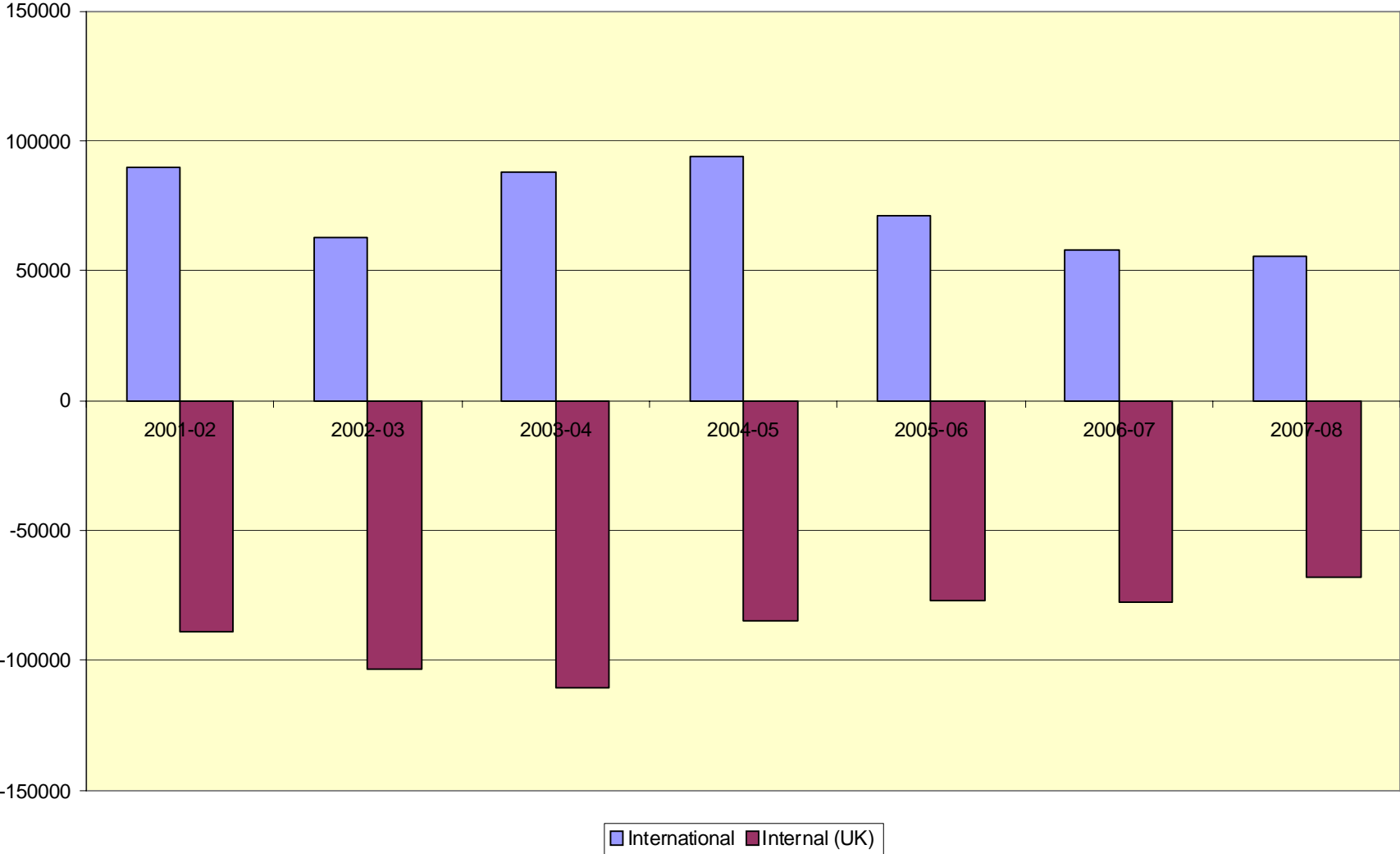
Components of Change: 2001-08



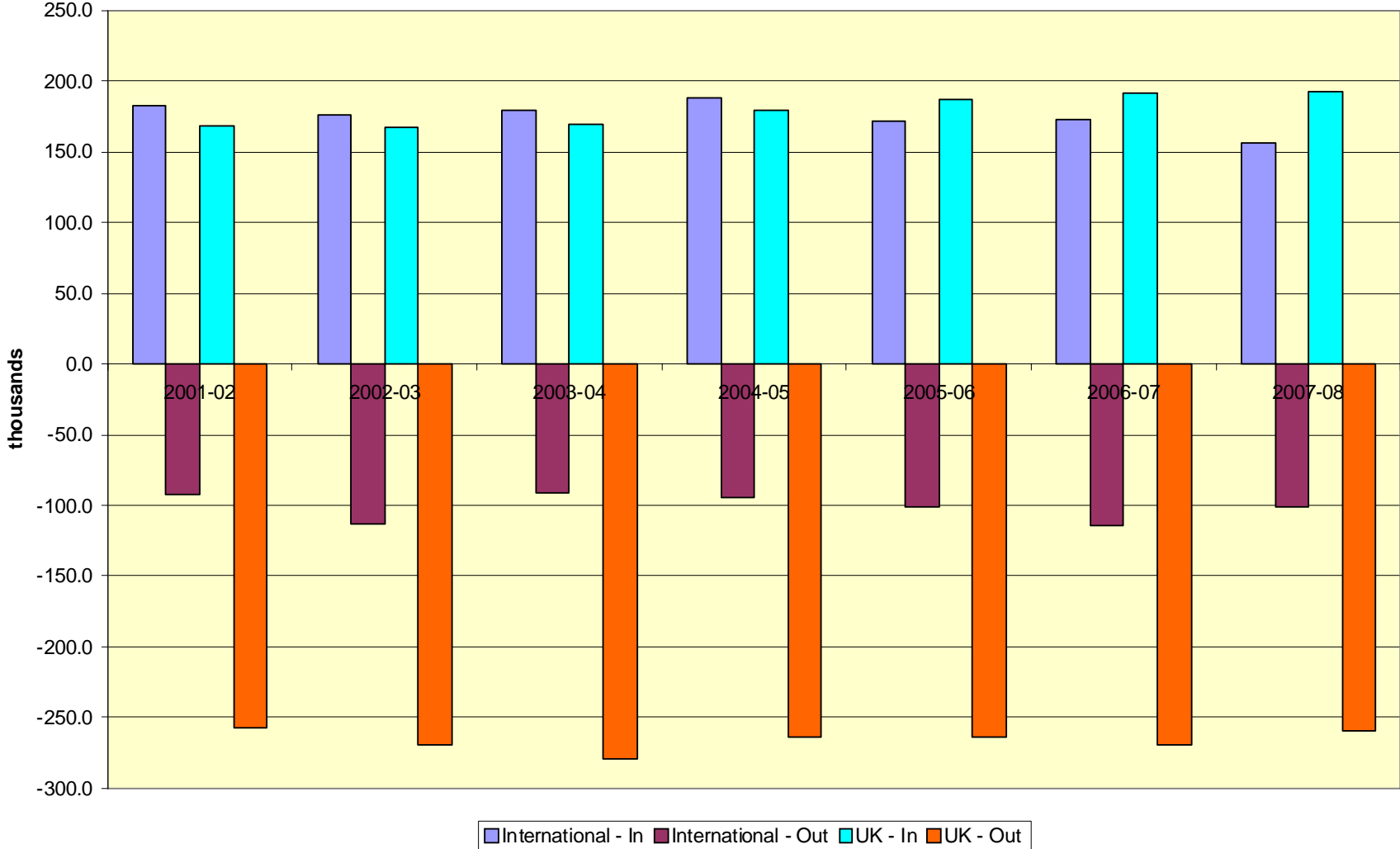
Natural Change: 2001-08



Net Migration: 2001-08



Migration Flows: 2001-08



Draft Replacement London Plan

Consultation October 2009 – January 2010

Technical seminar – 21st June 2010

Examination in Public now open – runs to mid October 2010

Replacement London Plan formal publication – late 2011

Projection Model

Borough level

Multi-area model – boroughs linked by probability based migration flows

Migration – external origins/destinations – GO East, GO South East, Rest of UK, Overseas

Migration trend led – linked to ONS assumptions about UK international migration

Fine-tuned to borough distribution of housing developments

Projection Data – Borough level

Base Population: ONS 2001 mid-year estimate with some revisions at ages 0-4

Births and Deaths: Actual 2001-02 to 2007-08, estimates 2008-09

**Migration: 2001 Census age/gender structures of flows
Annual changes based on mid-year estimates 2001-08**

Households: marital status and household representative rates from CLG 2006-based projections for 2001, 2006, 2011, ... 2031

**Labour Force: 2001 Census economic activity rates
ONS GB Labour Force projection, annual to 2020 (2006)**

Projection: Fertility and Survival Assumptions

Replicate for each borough the ONS assumptions in 2008-based England projections

Total Fertility (children per woman):

Falling from 2008-09 (1.94) to reach 1.85 in 2014-15, then held

Life Expectancy (years)

2008-09: 78.1 males; 82.2 females

2030-31: 83.2 males; 86.8 females

Average annual improvements by age

Housing data

Projections linked to housing targets, published in draft replacement London Plan

Borough housing targets: 2011 – 2021, extended to 2031

Targets based on SHLAA 2011-2021

SHLAA data used for 2009-2011

Projection – linking population and housing

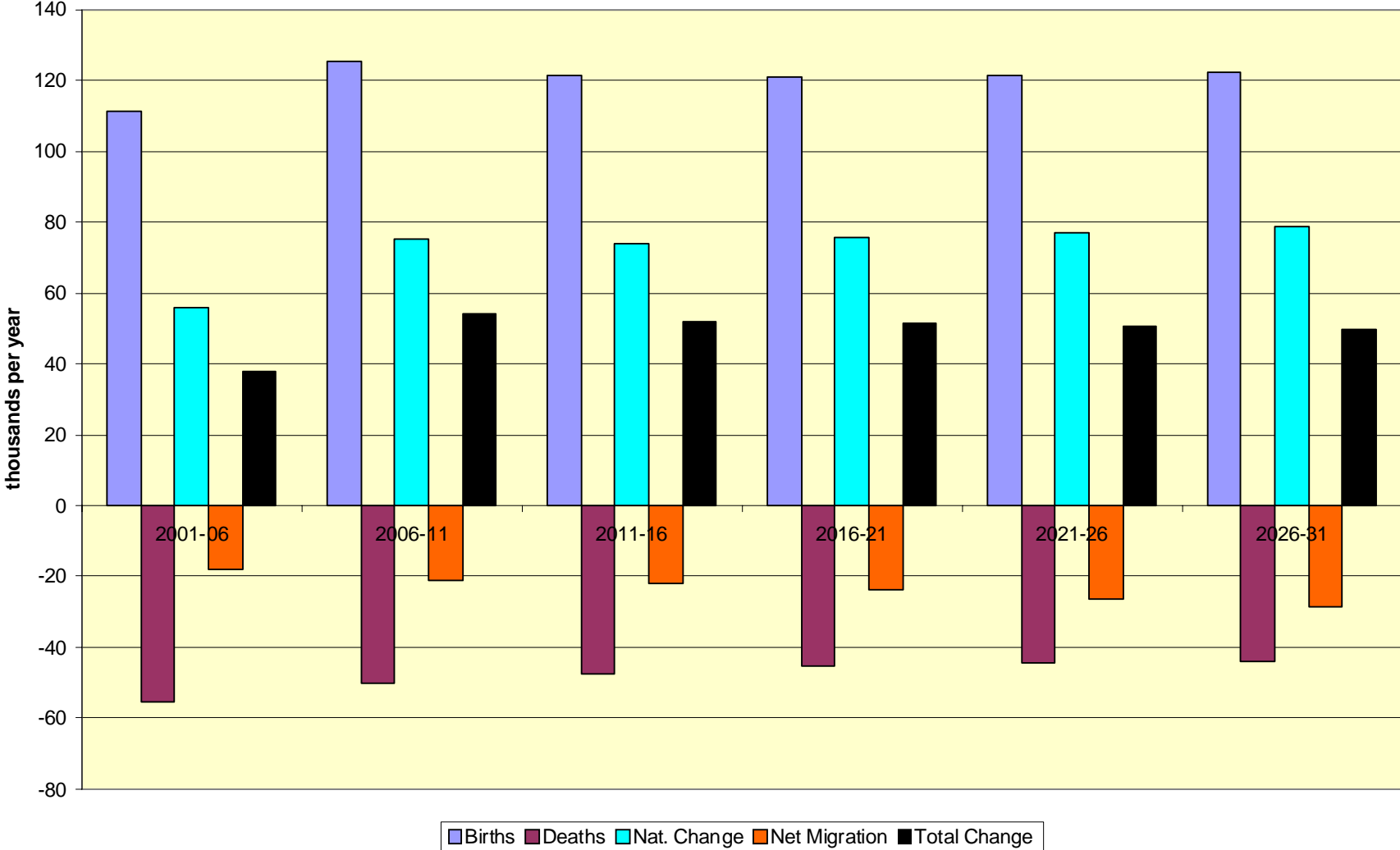
Age structure from demographic projection

Link to housing using CLG representative rates and marital status proportions in order to estimate households from a given population

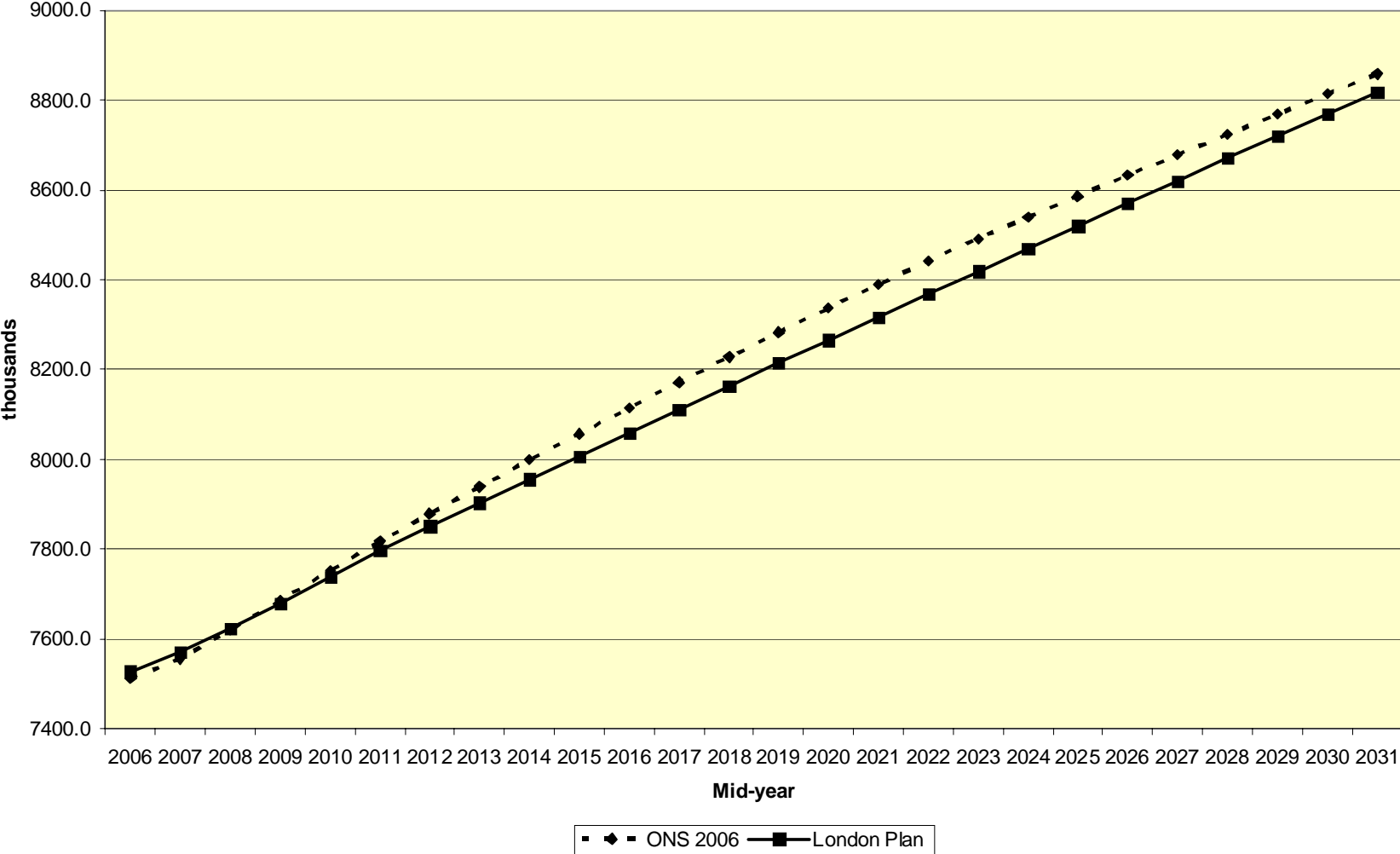
Adjust population to match the household supply

Iterate to a solution between housing led and demographic led projections

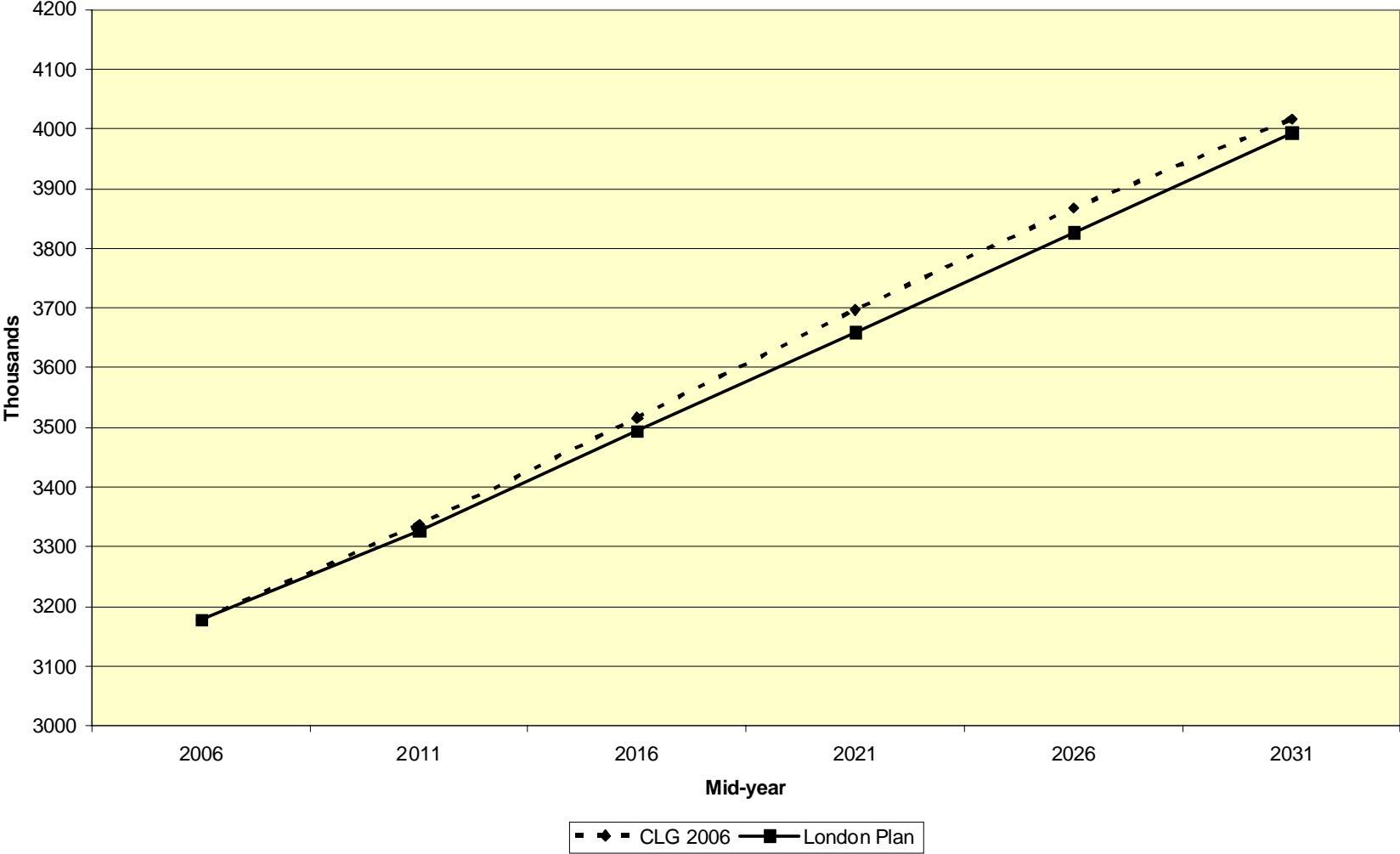
Projected Change: 2001-31



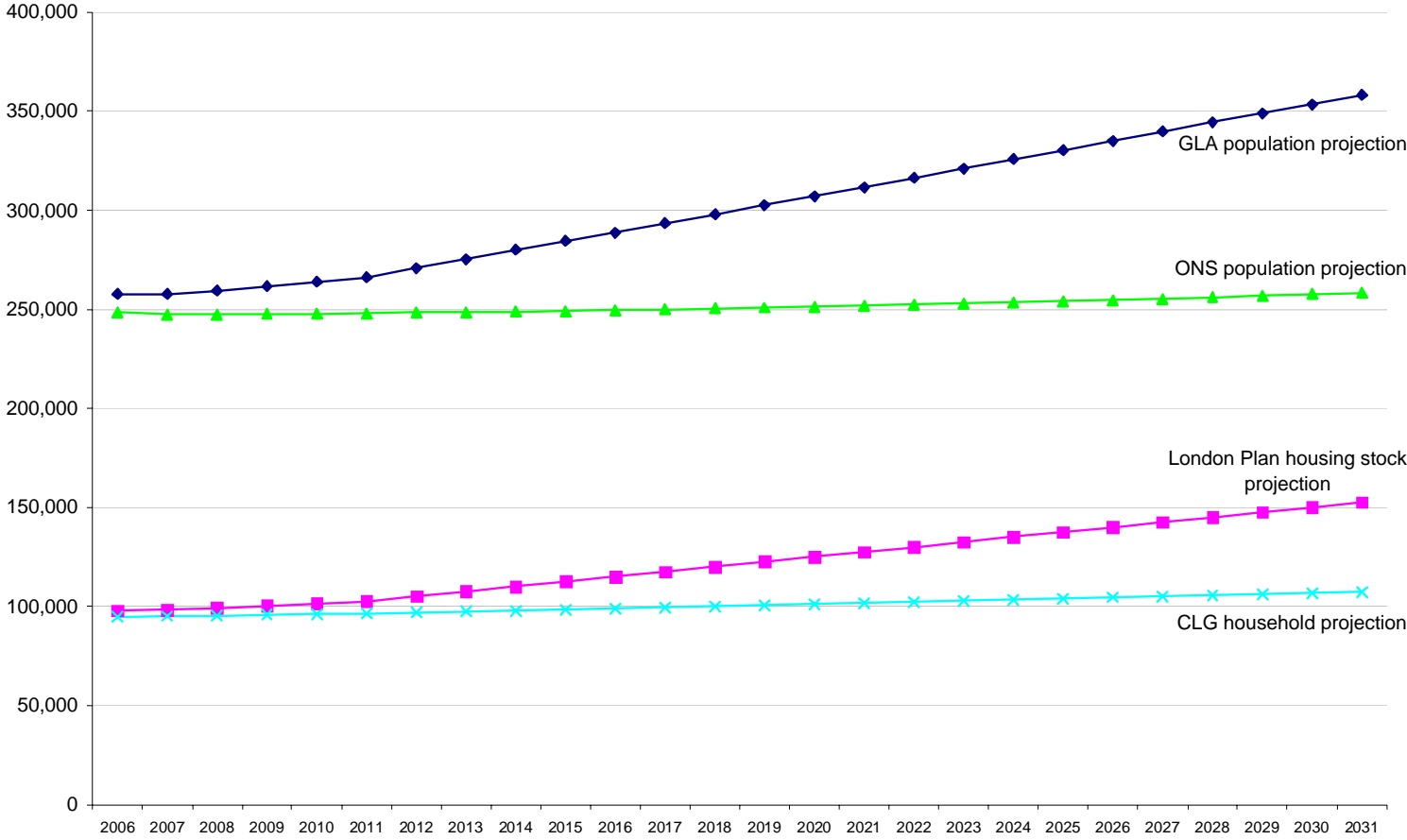
Projected Population: 2006-31



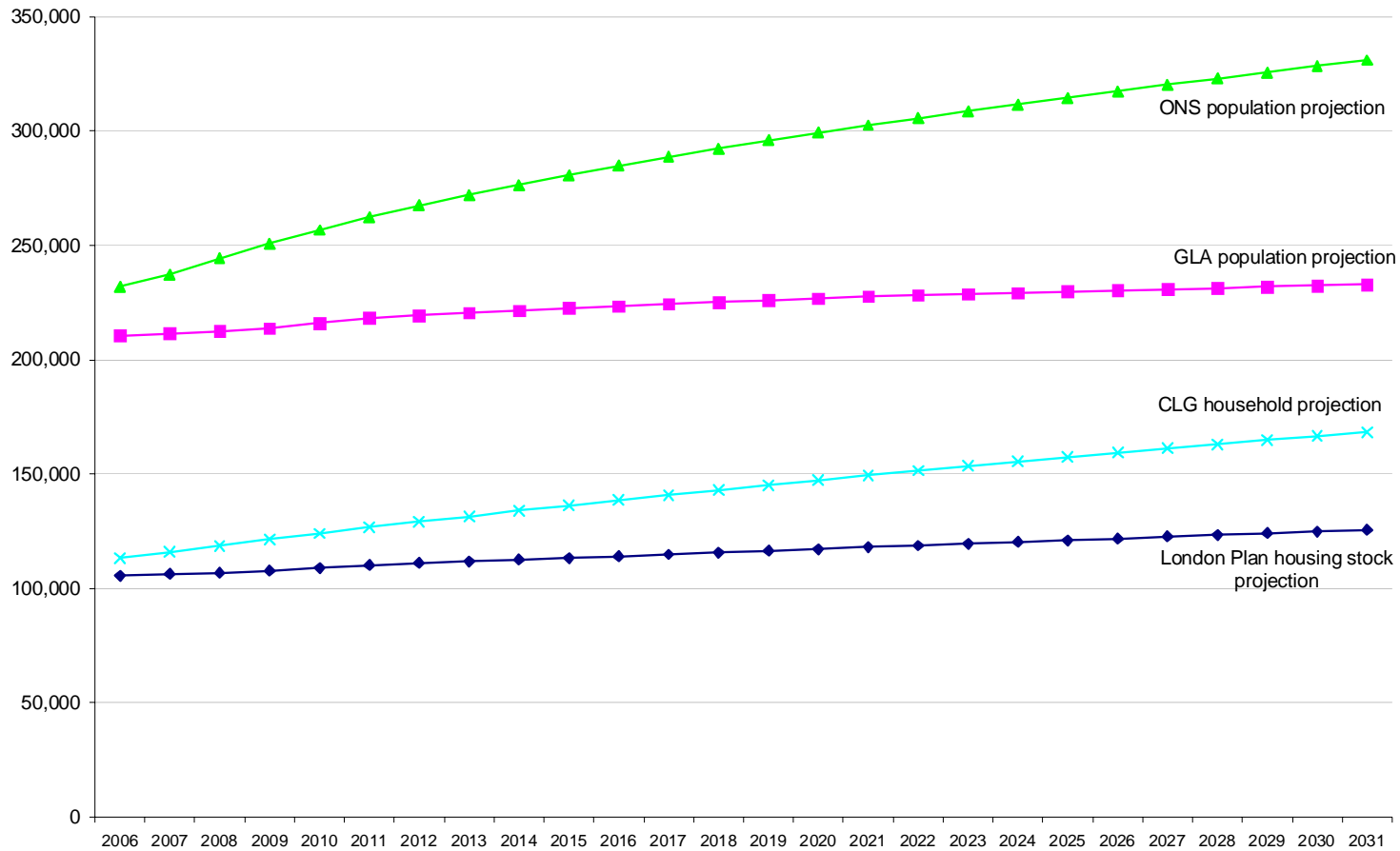
Projected Households: 2006-31



ONS and GLA compared - Newham



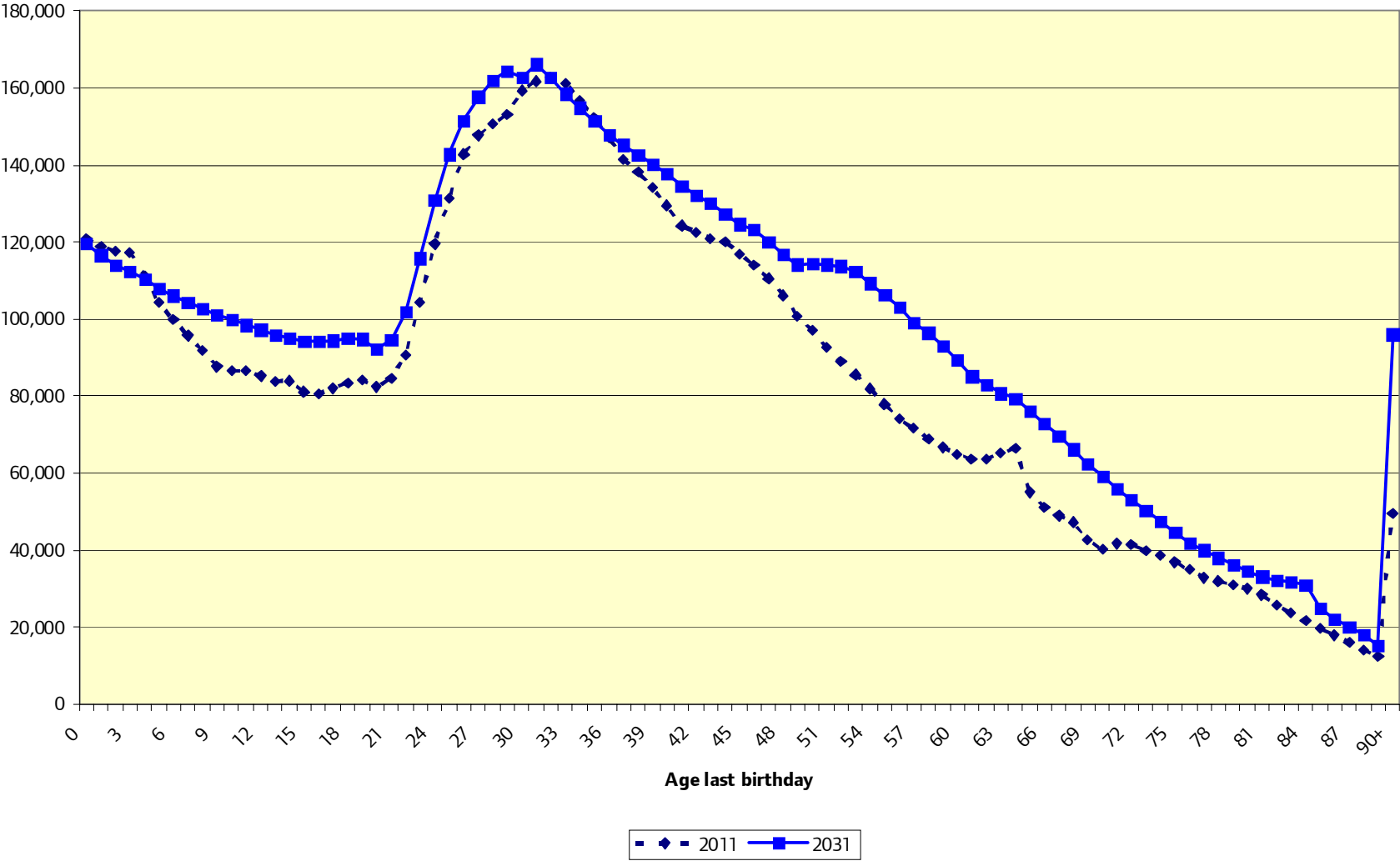
ONS and GLA compared - Westminster



Projection Summary (000s)

	2006	2011	2016	2021	2026	2031
Married Couples	1,037.6	967.5	914.2	876.3	848.0	842.4
Cohabiting Couples	334.3	401.2	457.4	505.4	550.0	588.2
Lone Parents	317.2	344.8	371.1	388.4	401.1	413.2
Other (2+ Adults)	340.6	358.6	379.0	399.7	420.7	441.0
One-person	1,147.3	1,254.1	1,371.3	1,490.0	1,607.0	1,708.7
Total Households	3,177.1	3,326.1	3,493.0	3,659.9	3,826.8	3,993.6
Household Population	7,433.9	7,704.4	7,964.3	8,221.6	8,472.4	8,718.0
Average Household Size	2.340	2.316	2.280	2.246	2.214	2.183
Total Population	7,526.9	7,798.0	8,058.1	8,316.2	8,569.2	8,818.0
Communal Population	92.9	93.6	93.7	94.6	96.7	100.0

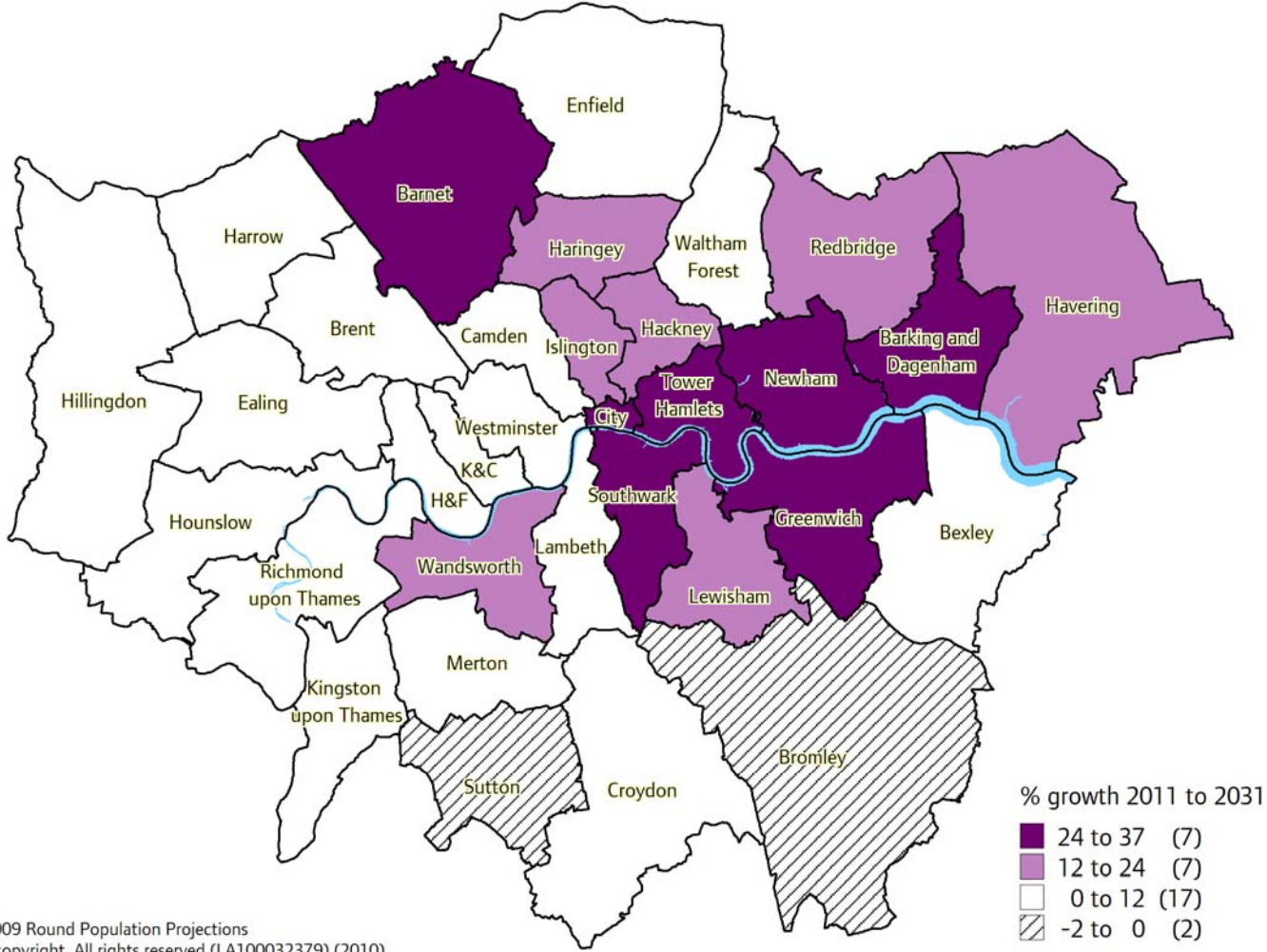
Projection: Age Structure



Projection: Labour Force (000s)

	2006	2011	2016	2021	2026	2031
Males	2125.4	2189.8	2248.5	2301.6	2359.5	2408.4
Females	1778.5	1869.1	1965.7	2044.9	2101.2	2151.2
Persons	3903.9	4059.0	4214.2	4346.5	4460.6	4559.5
% Female	45.6	46.0	46.6	47.0	47.1	47.2

Projection: Boroughs

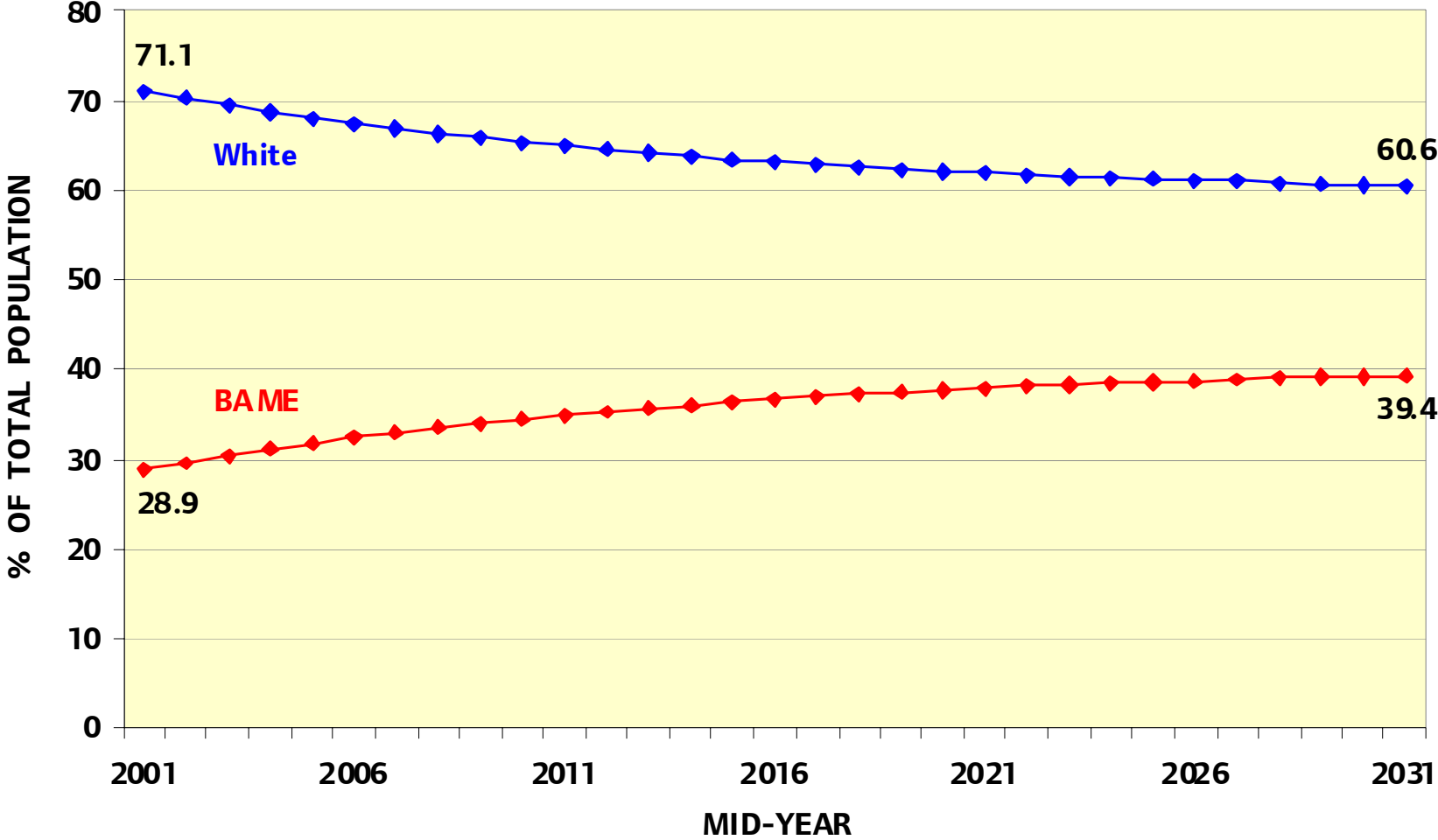


% growth 2011 to 2031

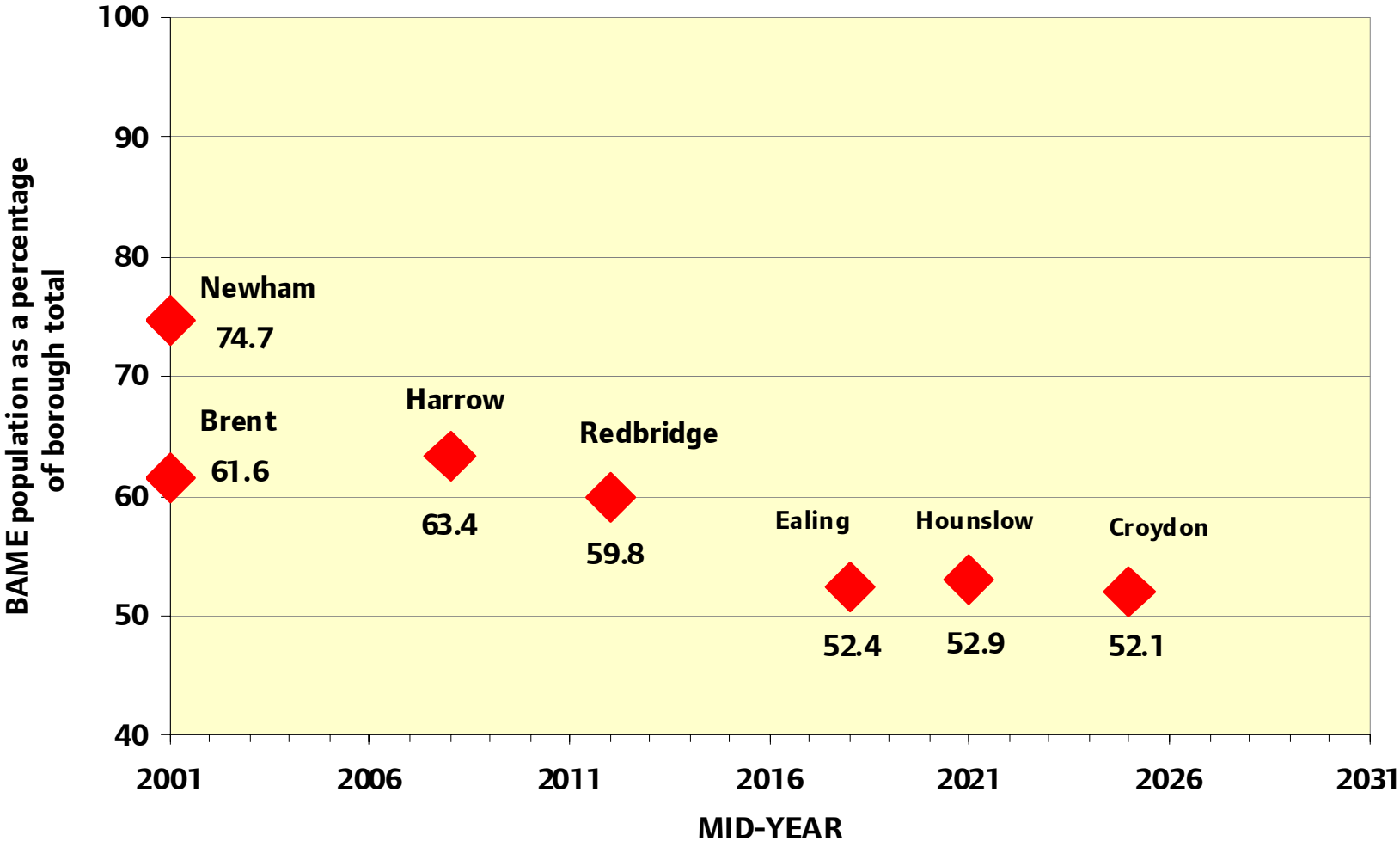
- 24 to 37 (7)
- 12 to 24 (7)
- 0 to 12 (17)
- ▨ -2 to 0 (2)

© GLA 2009 Round Population Projections
 © Crown copyright. All rights reserved (LA100032379) (2010)

Projection: Ethnicity



Projection: Ethnicity - Boroughs



Data availability

London Datastore

<http://data.london.gov.uk/>

Communities of Practice

<http://www.communities.idea.gov.uk/comm/landing-home.do?id=2483957>

Email list:

Email demography@london.gov.uk to join

jessica.chamberlain@london.gov.uk

020 7983 4347

john.hollis@london.gov.uk

020 7983 4604

demography@london.gov.uk