

21st Century Migration: South East England

7 July 2010

BSPS, City Hall



Outline

Internal UK Migration

Impact of Recession

International Migration

Trends

NHS Flag 4

NINo

ONS Developments in Data

Discussion Points

Inter-UK Migration (000s)

	In		Out		Net	
	Jun-07	Mar-09	Jun-07	Mar-09	Jun-07	Mar-09
England	94.3	92.3	112.1	100.0	-17.8	-7.7
Wales	56.5	50.2	49.2	48.2	7.3	2.0
Scotland	51.5	46.4	42.7	41.4	8.8	5.0
N. Ireland	12.8	10.8	11.1	9.9	1.7	0.9
UK Flow	1,227.5		1,151.5		na	

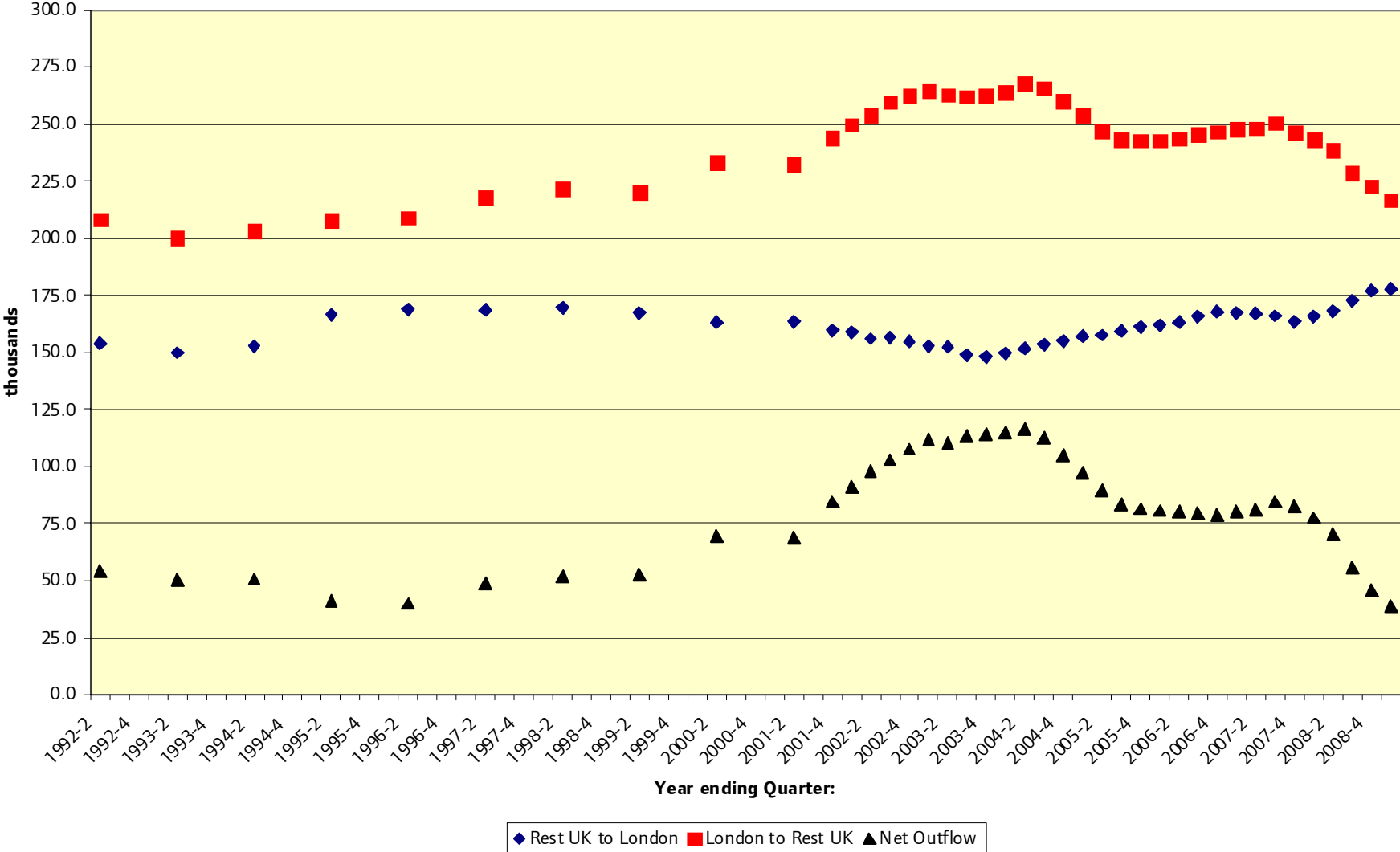
Inter-Regional Flows (000s): Sept 2009

Region of destination	Region of origin													
	United Kingdom	England	North East	North West	Yorkshire and The Humber	East Midlands	West Midlands	East	London	South East	South West	Wales	Scotland	Northern Ireland
United Kingdom	.	99.4	40.1	103.1	95.9	95.5	98.7	117.9	215.7	186.4	104.5	48.7	41.5	11.0
England	93.2	.	34.7	84.7	87.5	89.1	87.1	110.0	203.2	171.2	90.9	46.6	37.8	8.7
North East	37.4	32.3	.	5.8	9.1	3.1	2.2	2.8	3.5	3.8	2.0	0.9	3.3	0.8
North West	96.6	80.2	5.9	.	18.1	8.9	12.2	6.5	11.5	10.2	6.9	8.2	6.0	2.3
Yorkshire and The Humber	90.1	83.1	9.2	18.8	.	15.7	7.9	7.9	9.2	9.2	5.2	2.6	3.8	0.7
East Midlands	99.5	93.5	3.1	9.1	17.1	.	15.6	15.5	11.7	14.8	6.6	2.8	2.6	0.5
West Midlands	87.9	77.6	2.2	11.5	7.5	13.9	.	7.0	11.7	12.4	11.4	7.2	2.5	0.6
East	130.8	123.6	2.6	6.7	7.5	13.3	7.1	.	53.4	24.2	8.7	2.8	3.6	0.8
London	180.3	166.6	5.4	13.8	12.6	12.5	14.5	32.2	.	57.4	18.1	5.5	6.8	1.4
South East	205.8	191.9	4.1	10.7	9.5	13.7	12.9	26.4	82.6	.	31.9	7.0	5.8	1.1
South West	123.3	109.5	2.2	8.2	6.1	8.0	14.7	11.7	19.6	39.1	.	9.5	3.5	0.7
Wales	50.0	48.1	1.0	9.1	2.7	2.8	8.0	3.0	4.7	7.4	9.3	.	1.5	0.4
Scotland	47.1	43.5	3.9	7.5	5.0	3.1	3.0	4.1	6.5	6.7	3.8	1.7	.	1.9
Northern Ireland	10.4	7.8	0.5	1.8	0.7	0.5	0.7	0.7	1.3	1.0	0.6	0.4	2.2	.

Largest Inter-Regional Flows (000s): Year to Sept 2009

From:	To:	
London	S East	83
S East	London	57
London	East	53
S East	S West	39
East	London	32
S West	S East	32
East	S East	26
S East	East	24
London	S West	20
N West	Yorks & H	19

London: Migration within UK



London: Migration within UK

Year to Sept 2009:

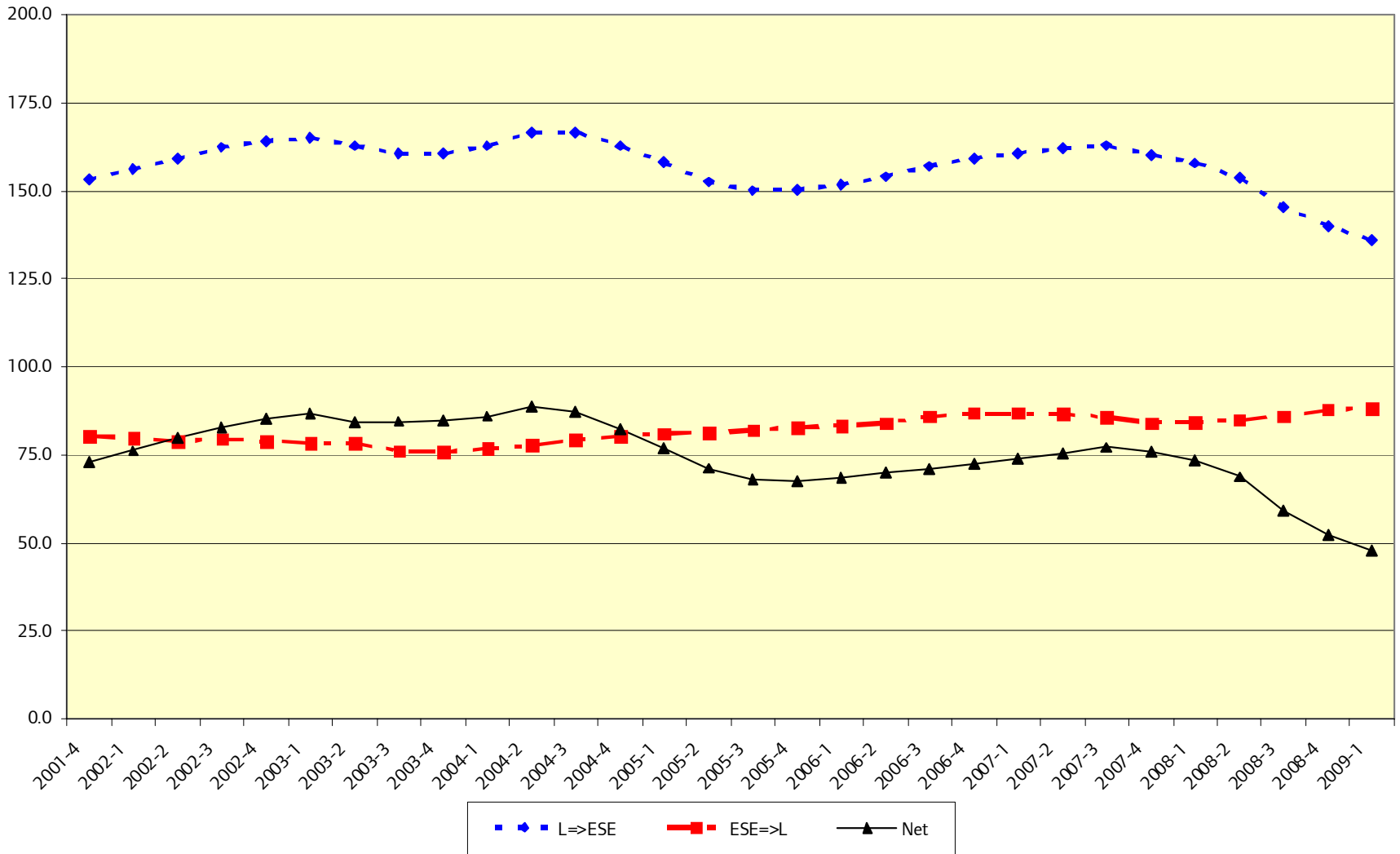
From Rest of UK	180.3k
To Rest of UK	215.7k
Net	-35.4k

Outflow: Slight increase since June 2009
First increase in 2 years

Inflow: Highest since the system was established in 1984
Continuous increase since Sept 2007

Net loss: Slight increase since June 2009
First increase in 2 years
46k to GOSE & GOER

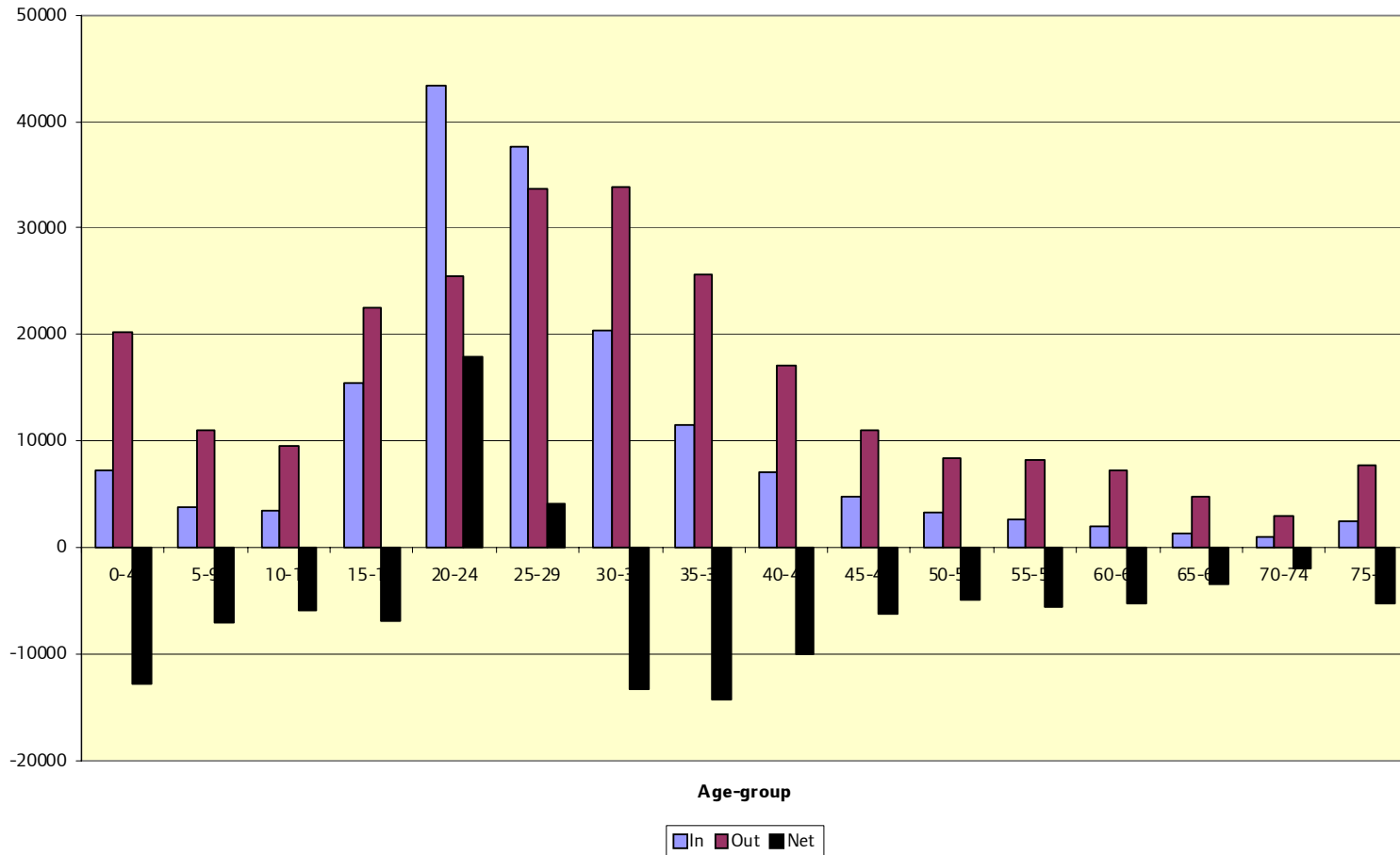
London: Migration with E&SE



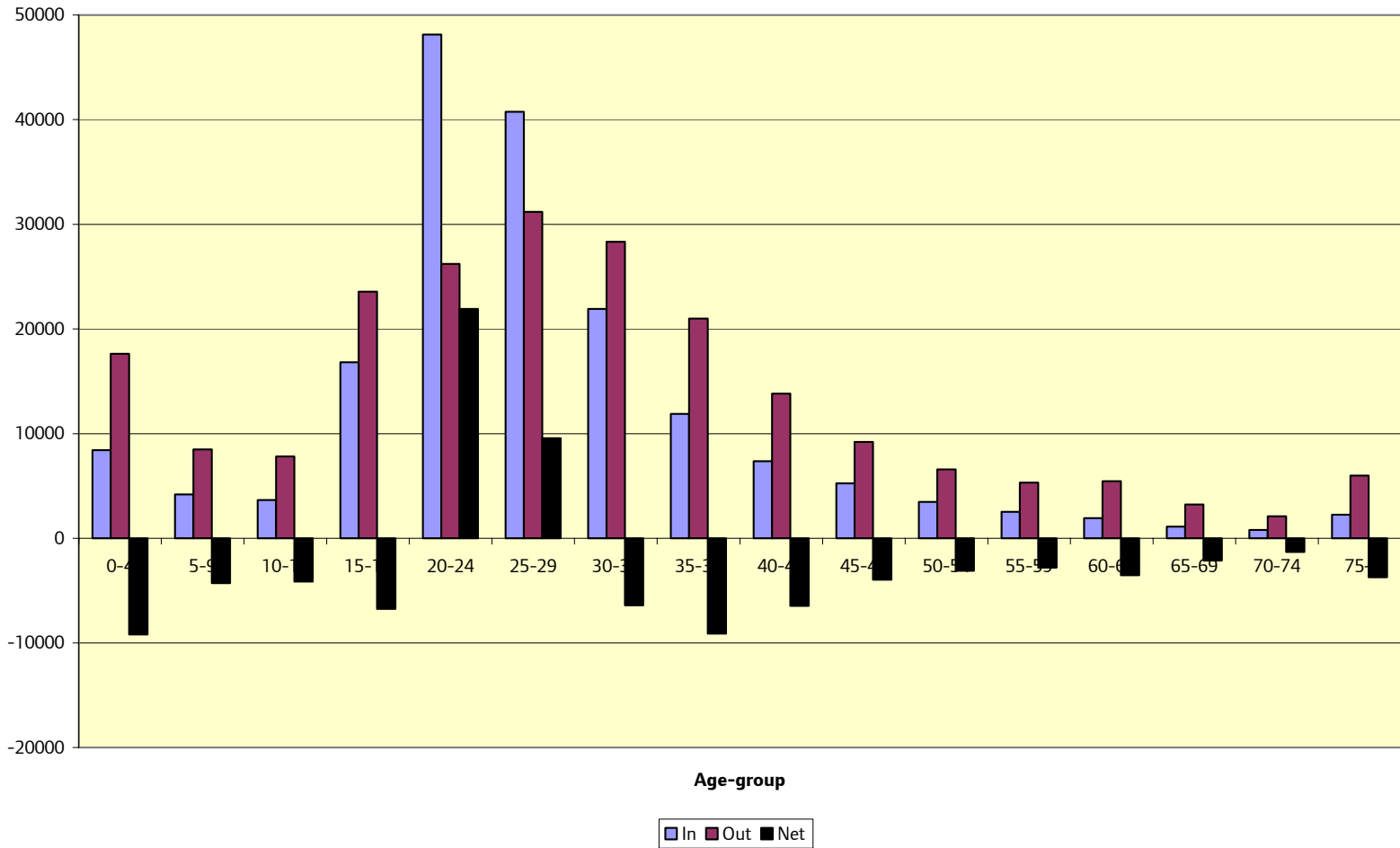
Percentage Change in flows: June 2007 to Sept 2009

		From:				
		East	London	S East	Rest UK	Total
To:	East	-	-17.7	-6.9	-4.4	
	London	4.5	-	2.7	11.0	
	S East	-9.9	-14.9	-	-4.2	
	Rest UK	-11.1	-7.8	-12.8	-	
Total						-5.6

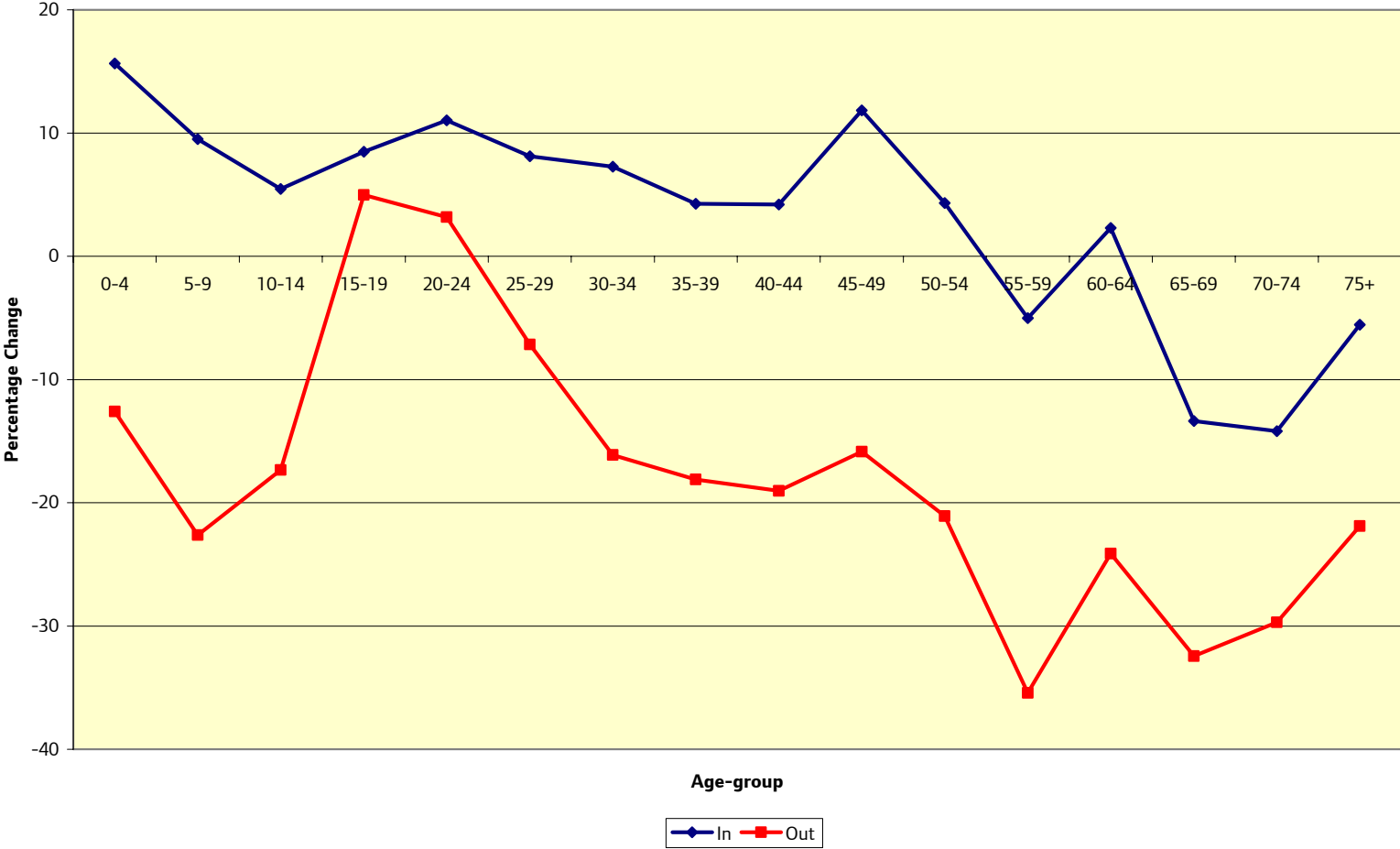
London: UK Migration by Age: 2007 Q2



London: UK Migration by Age: 2009 Q3



Change in Migration by Age: London: 2007 Q2 to 2009 Q3



Internal Migration Recession Impacts

London's reception classes bursting at seams

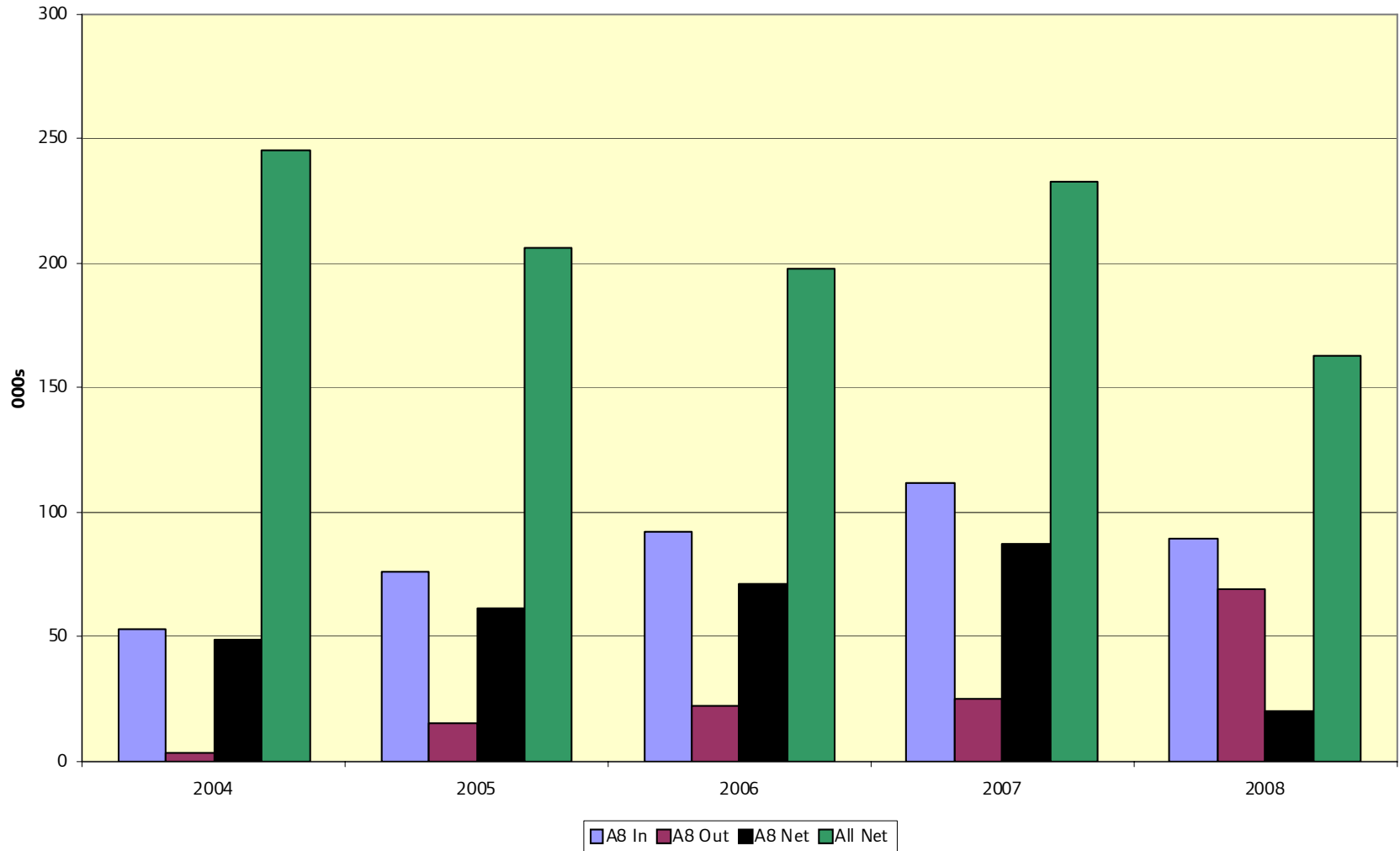
Increased population growth

More older people

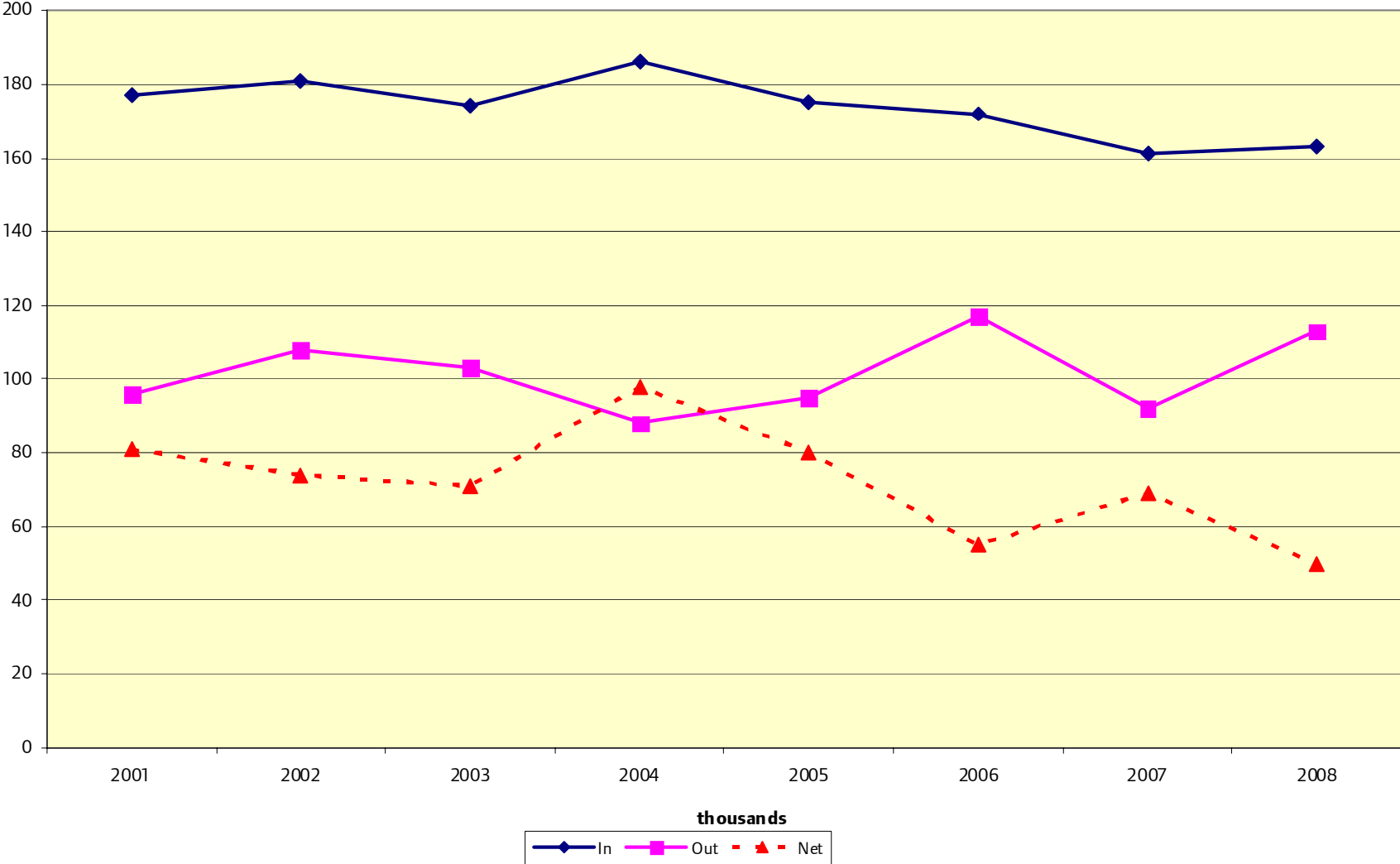
Increasing household sizes – (overcrowding?)

More private renting

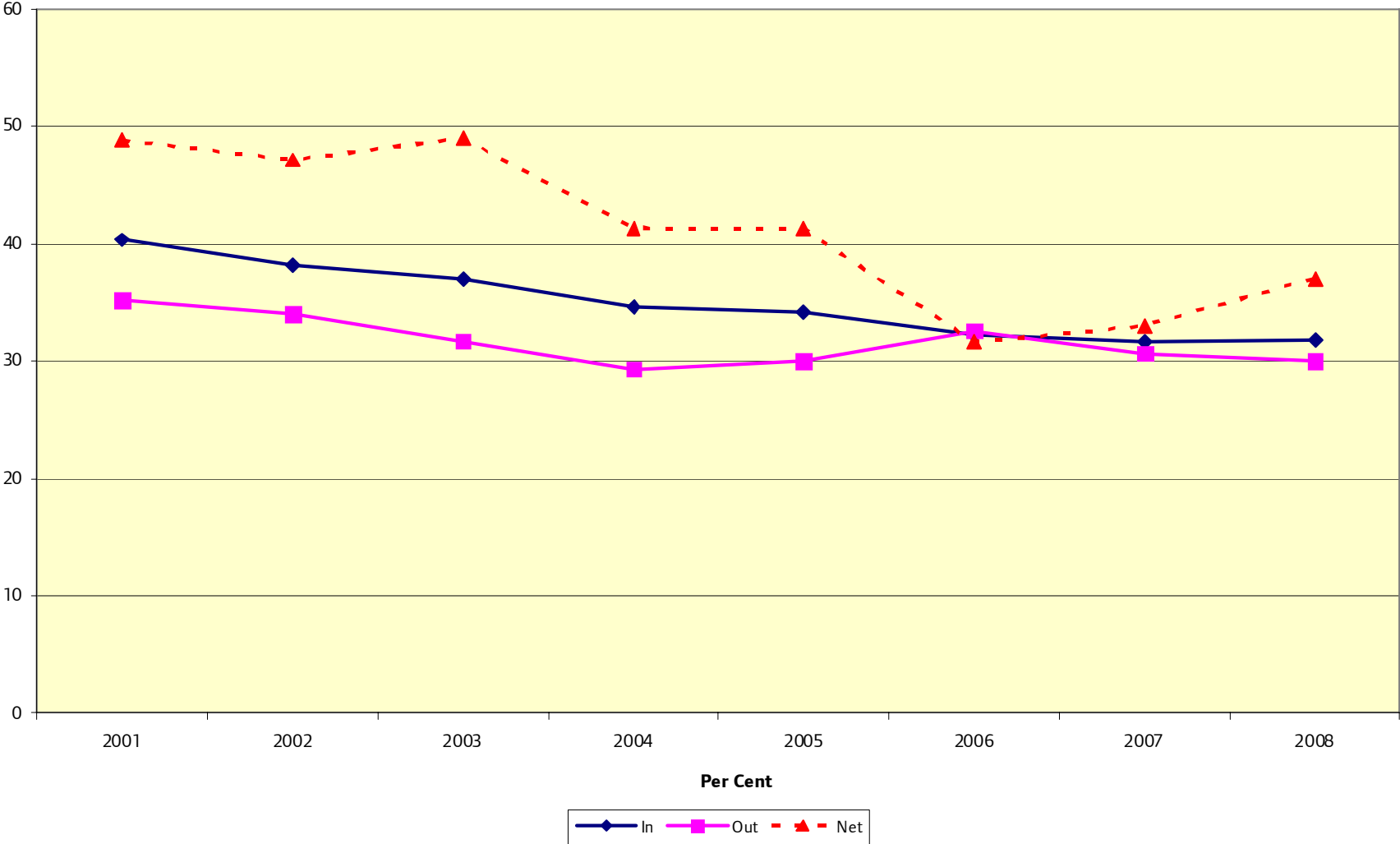
A8 Migration: UK



International Migration: London



International Flows: London % UK

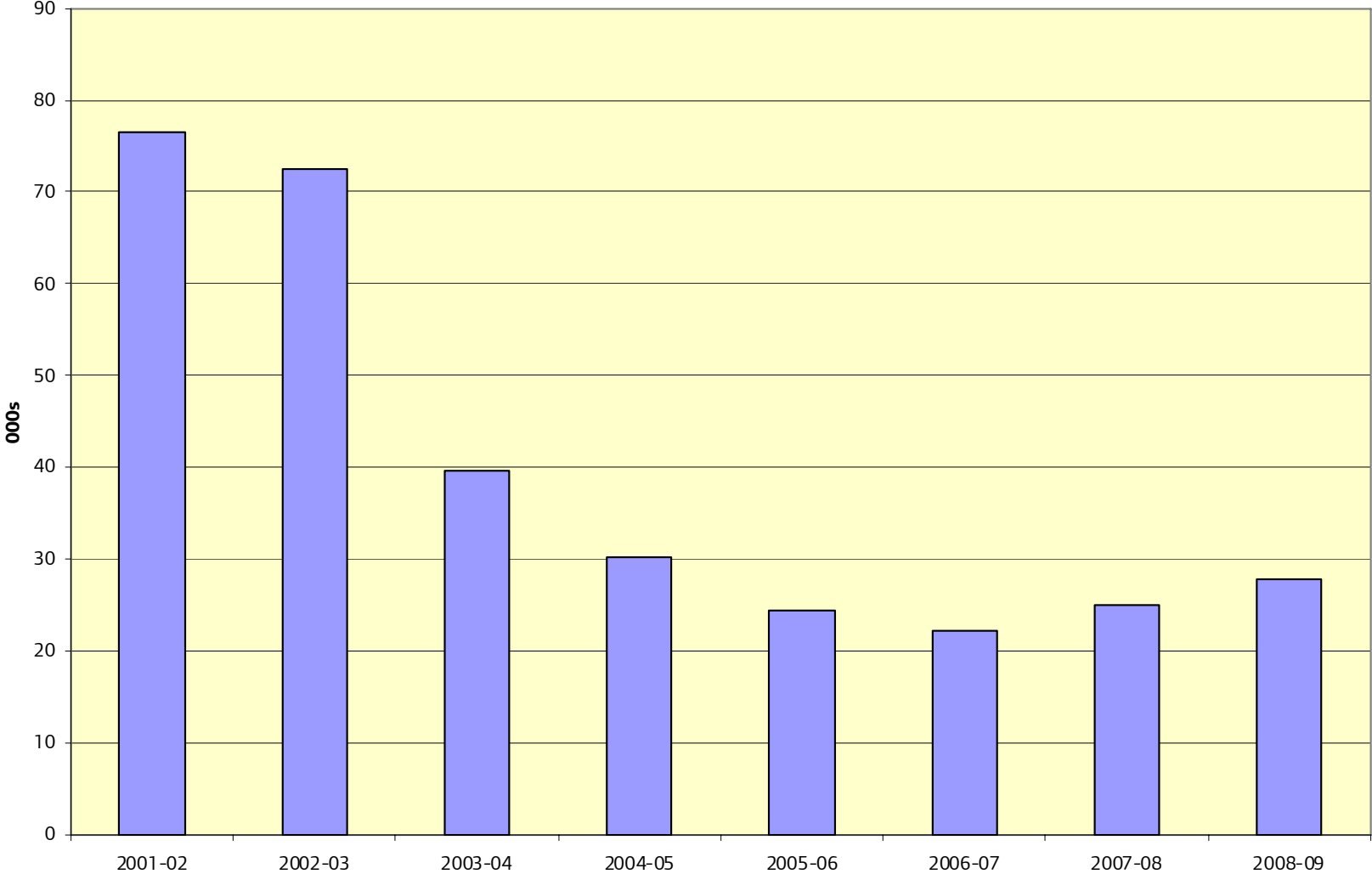


International Migration by Source

**London 2007-08:
(thousands)**

	In	Out	Net
IPS	137	92	45
Eire	2	4	-2
Asylum	8	3	5
Switchers	10	3	8
Total	156	101	55

UK Asylum Applicants



Supported Asylum Seekers

June 2009

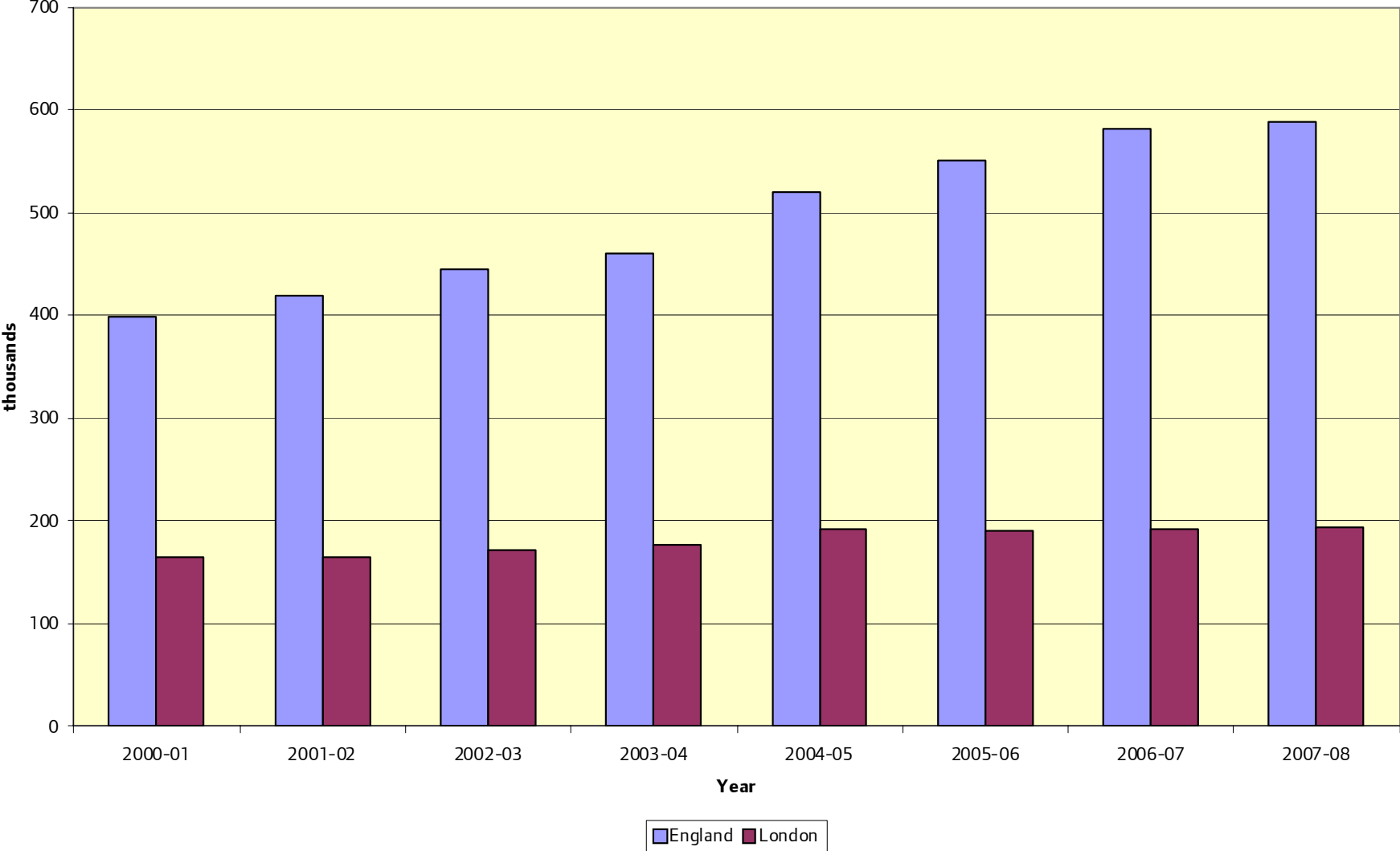
Subsistence Only

London	3,430
UK	5,120

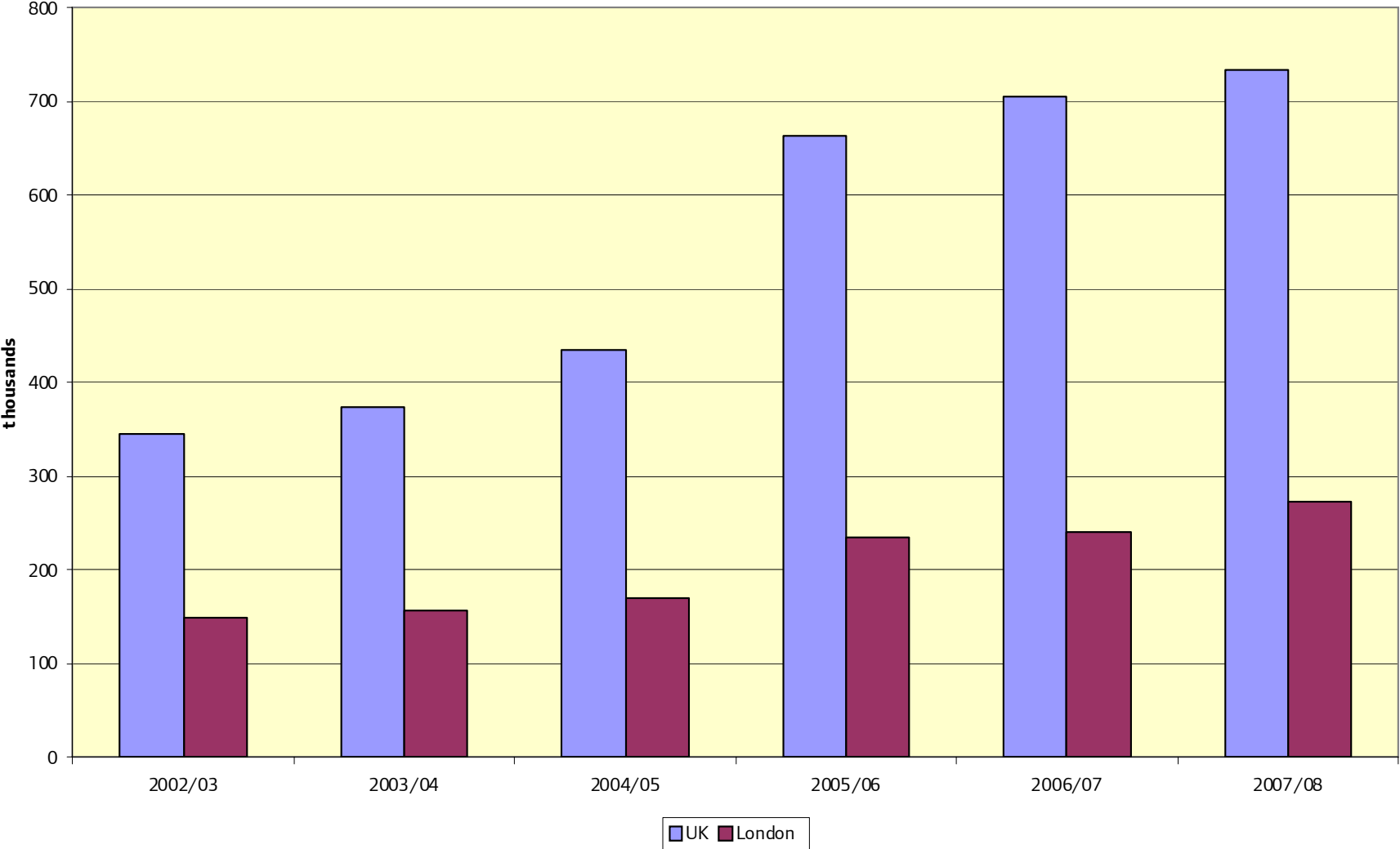
Accommodation

London	1,205
UK	25,535

NHS Flag 4



National Insurance: UK & London



Internal Migration: Issues

- Young single adult males delay in re-registering with GPs
 - Student areas not accurately credited/debited
 - Delayed GP re-registration straddling Census – registered in A, moves to B does not re-register and is resident at time of Census, moves to C and re-registers. **Move from A to C but MYE still has 'person' resident in B.**
- Not linked up with international inflows
 - International 'move' to A, moves on and first registers in B, moves and re-registers in C. **Move from B to C but still 'resident' in A.**

ONS Revisions – Students

HESA data: Students at term-time address

Migration of first year students using aggregate HESA data where flows are greater than those from GP data

Student moves on completion of study

- **HESA Destination Survey**

Will improve the gap due to late re-registration

More post- study graduates move to London

Does not account for students moving during course

International Migration Issues

IPS has been focused on tourism and national budget with a migration add-on

IPS has had relatively small sample (3k immigrants and 1k emigrants per annum)

IPS uses intentions to remain for 12 months or more – UN definition

IPS gets a first address – probably short-term – central city tendency

Little supporting data on outflows

IPS now a larger, more focused, migration survey

ONS Revisions – Immigrants

Model-based approach

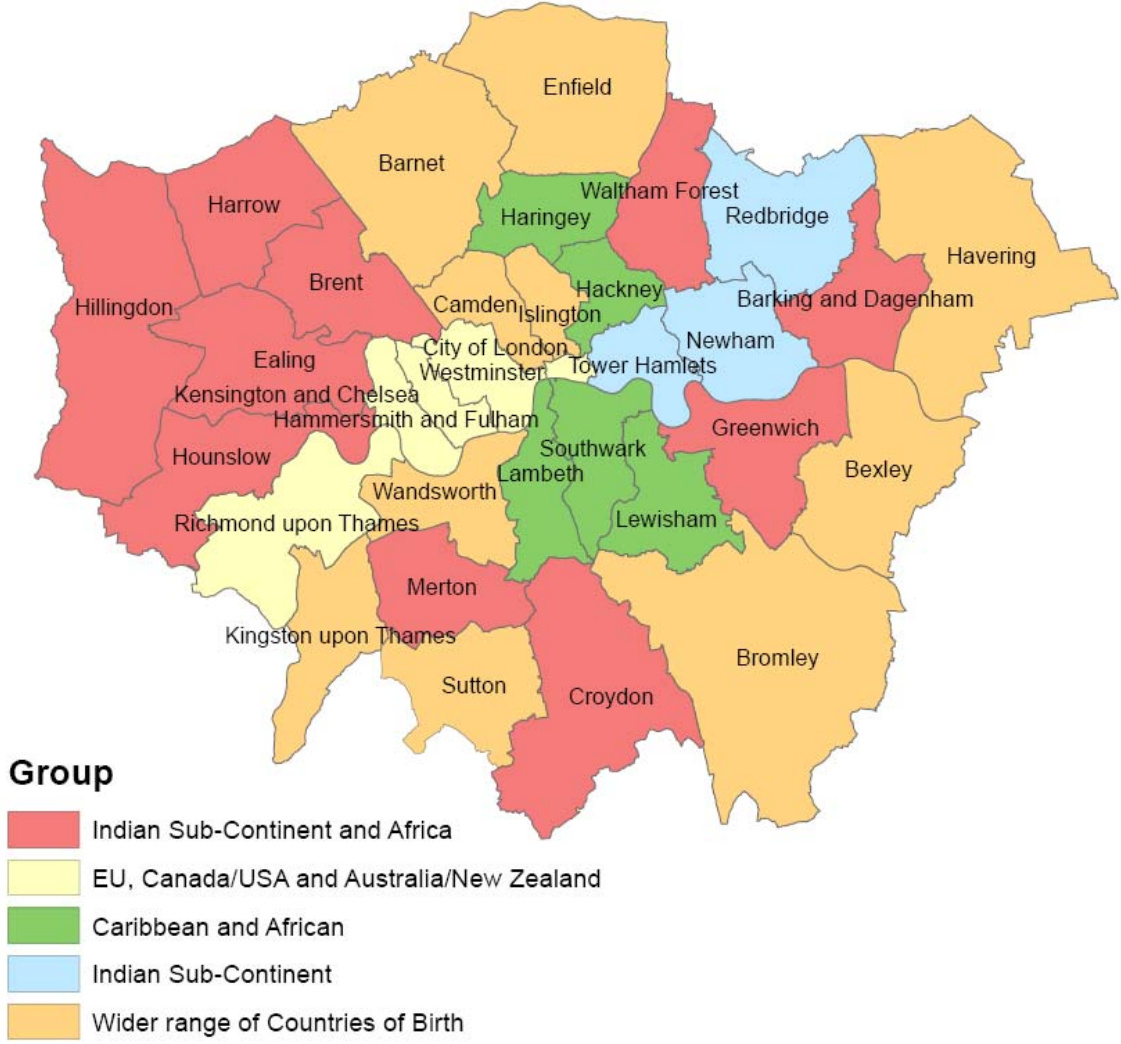
- Using admin data (NINo, Flag 4) and socio-economic data to distribute IPS migrants to LAs

Not used at regional level

Unsuitable for London

Problem with NMGi in London

NMGi in London



New Migrant Databank

Part of Leeds University ESRC UPTAP project.

New Migrant Databank first suggested in Leeds work for GLA

Already uses HESA/NINo/Flag 4 to break TIM down to regions:

London	+20k	+12%
West Midlands	+11k	+33%
North West	+4k	+8%
East	-14k	-23%
Yorks and Humber	-10k	-21%
South West	-8k	-19%
South East	-4k	-4%

Emigrants

Refined model-based probability estimation method.

Very significant impacts

Problems:

Lack of true covariates (ie no equivalent to NINo/Flag4)

The methodology is still somewhat opaque – Black Box.

Are the rare households without exclusive bath/WC so critical to international outflows?

Discussion Points

How long may the recession-based changes in patterns persist?

What are the short/medium term impacts of these changes around the regions?

Will post-recession international migration flows return to recent levels and patterns (ie eastern European)?

What do people think about the impacts of the recent ONS consultation on student and international migration?

Which way for asylum?

John.Hollis@london.gov.uk
020 7984 4604