

# A View from London

11 January 2010



# Overview

**Why we need better estimates**

**Roadshow '15 Minute Rant' Reviewed**

**Geography**

**Sense Checking**

**Impacts on London**

**Students**

**International Flows**

**Conclusions**

# Why we need good local migration estimates

LA and HA settlements

=> based on population projections

=> based on population estimates

=> **based on migration estimates**

Good LA estimates

=> better small area estimates

=> SAPE underline indicators (mortality rates, IMD, etc)

QA for 2011 Census

# Geography Issues

## Regional Distribution of International Inflows

cf. University of Leeds New Migrant Databank

## LA Distribution of International Inflows

Reliant on LFS at NMGi level in London

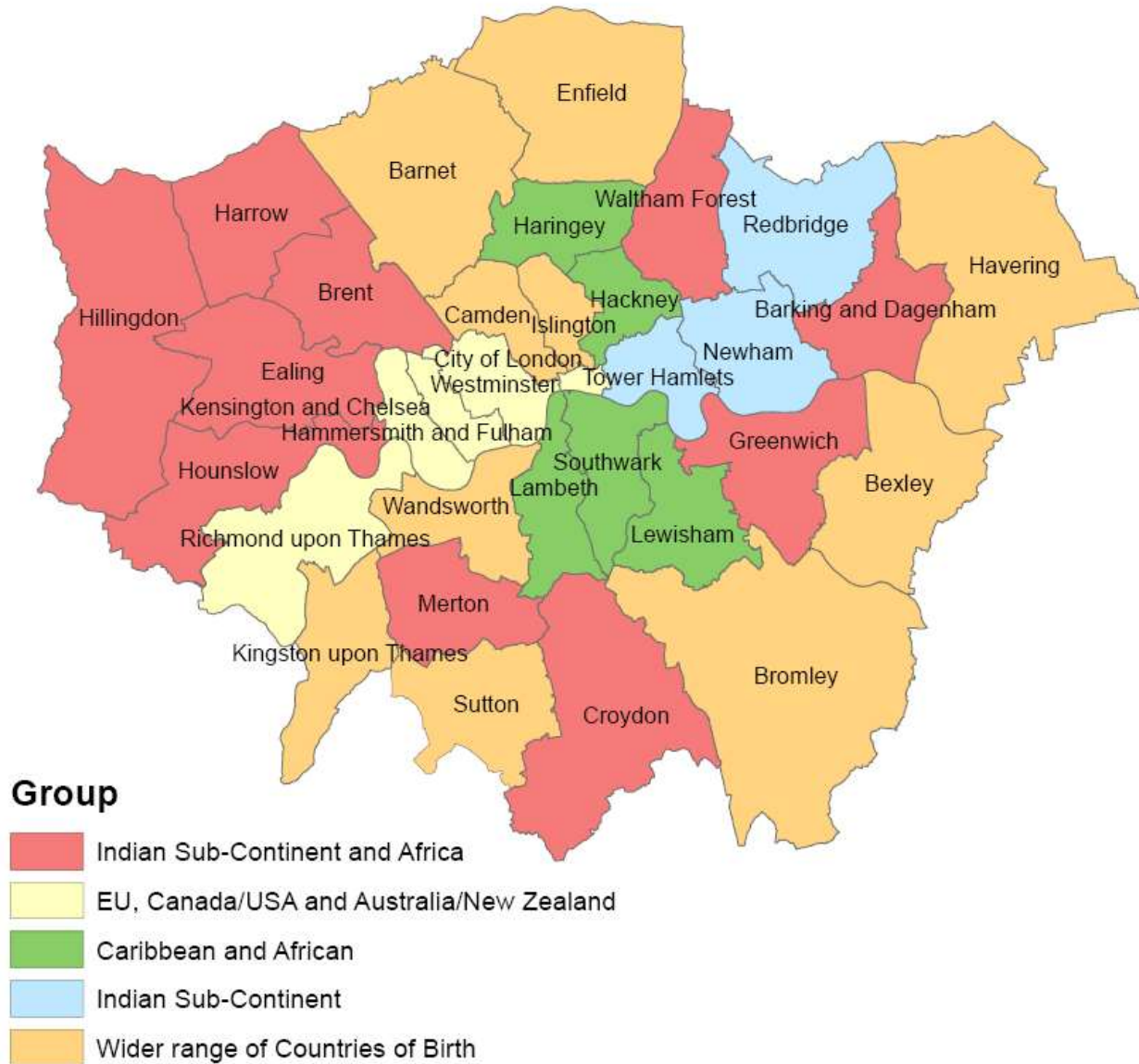
# Immigrants

Leeds University UPTAP project – **New Migrant Databank**

Already used HESA/NINo/Flag 4 directly to break TIM down to regions:

<b>London</b>	<b>+20k</b>	<b>+12%</b>
West Midlands	+11k	+33%
North West	+4k	+8%
<b>East</b>	<b>-14k</b>	<b>-23%</b>
<b>Yorks and Humber</b>	<b>-10k</b>	<b>-21%</b>
South West	-8k	-19%
South East	-4k	-4%

# NMGI in London



# How can we tell if estimates are right?

'Sense Check' results

Trends in:

General Fertility Rate / **Total Fertility Rate**

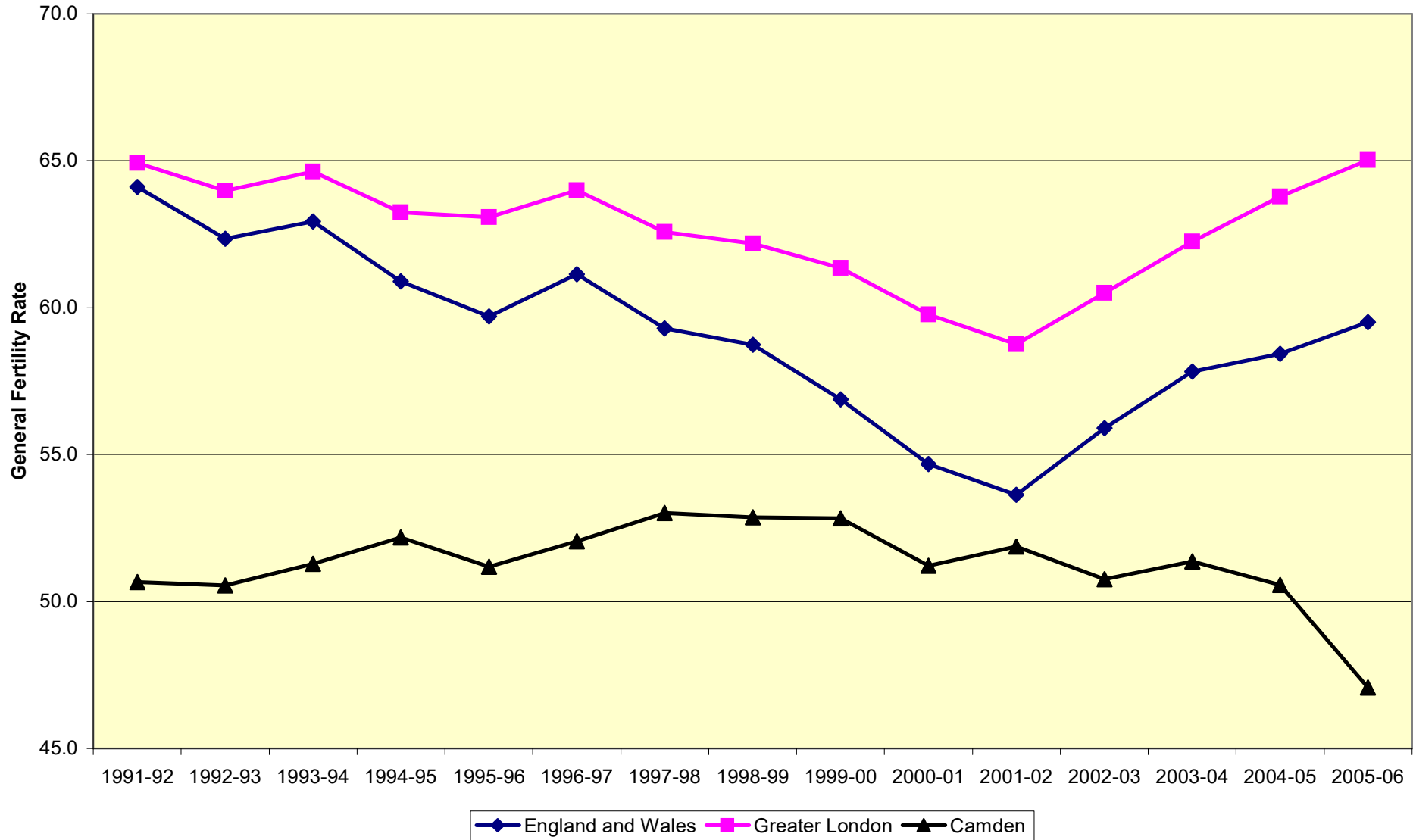
*Standardised Mortality Rate*

Sex Ratios

Age structure

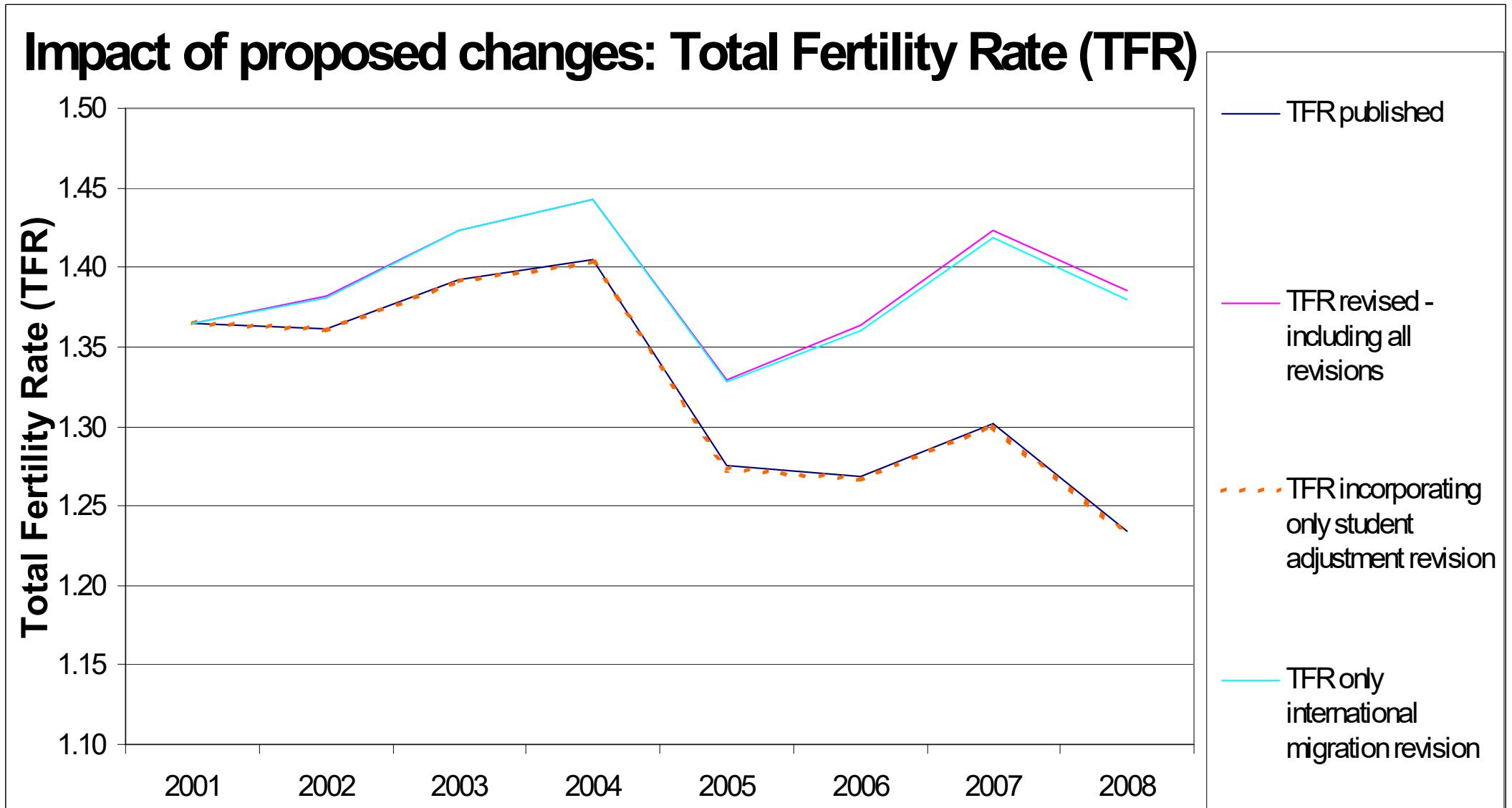
Households

# GFR - Camden





# TFR - Camden

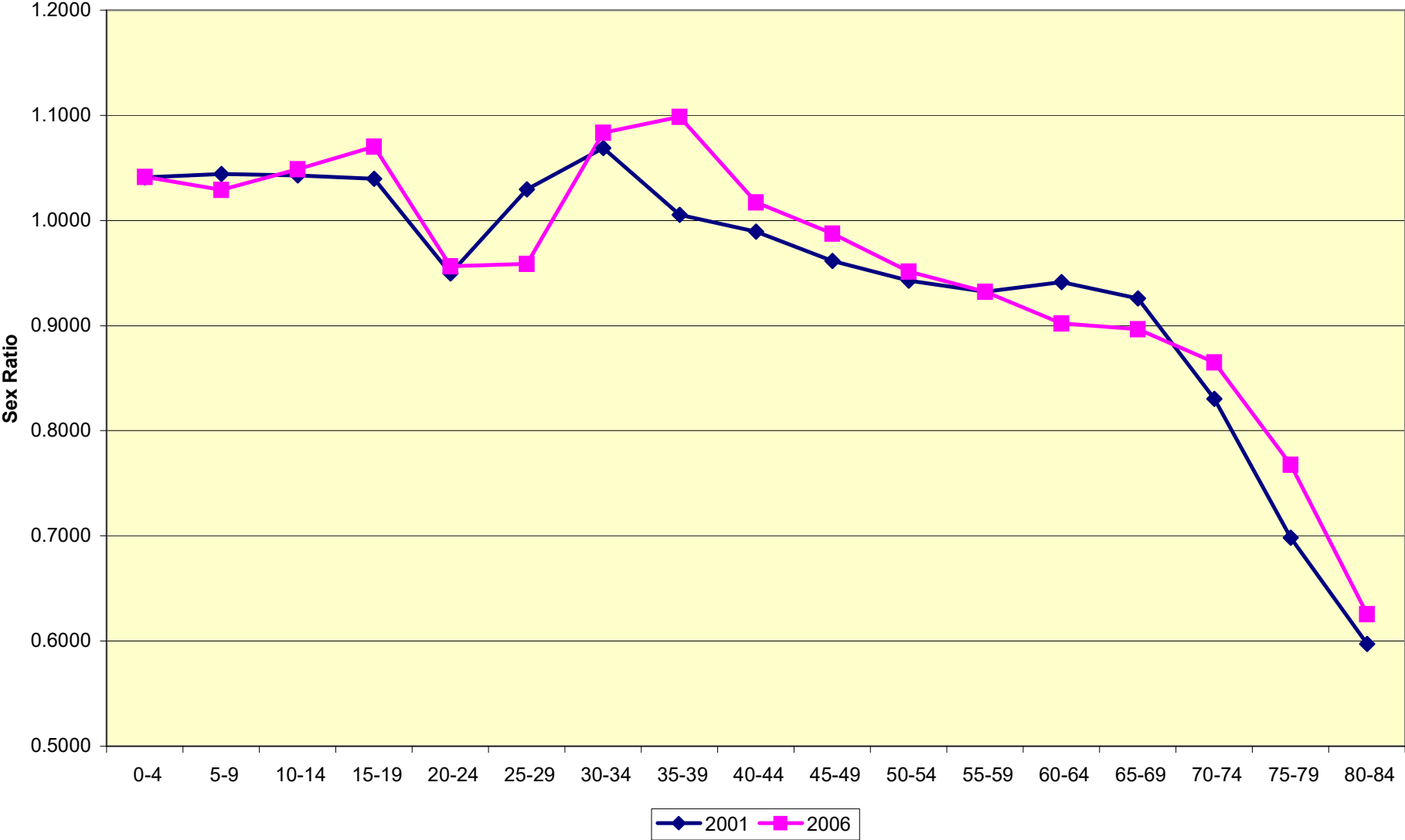


# TFR – K&C

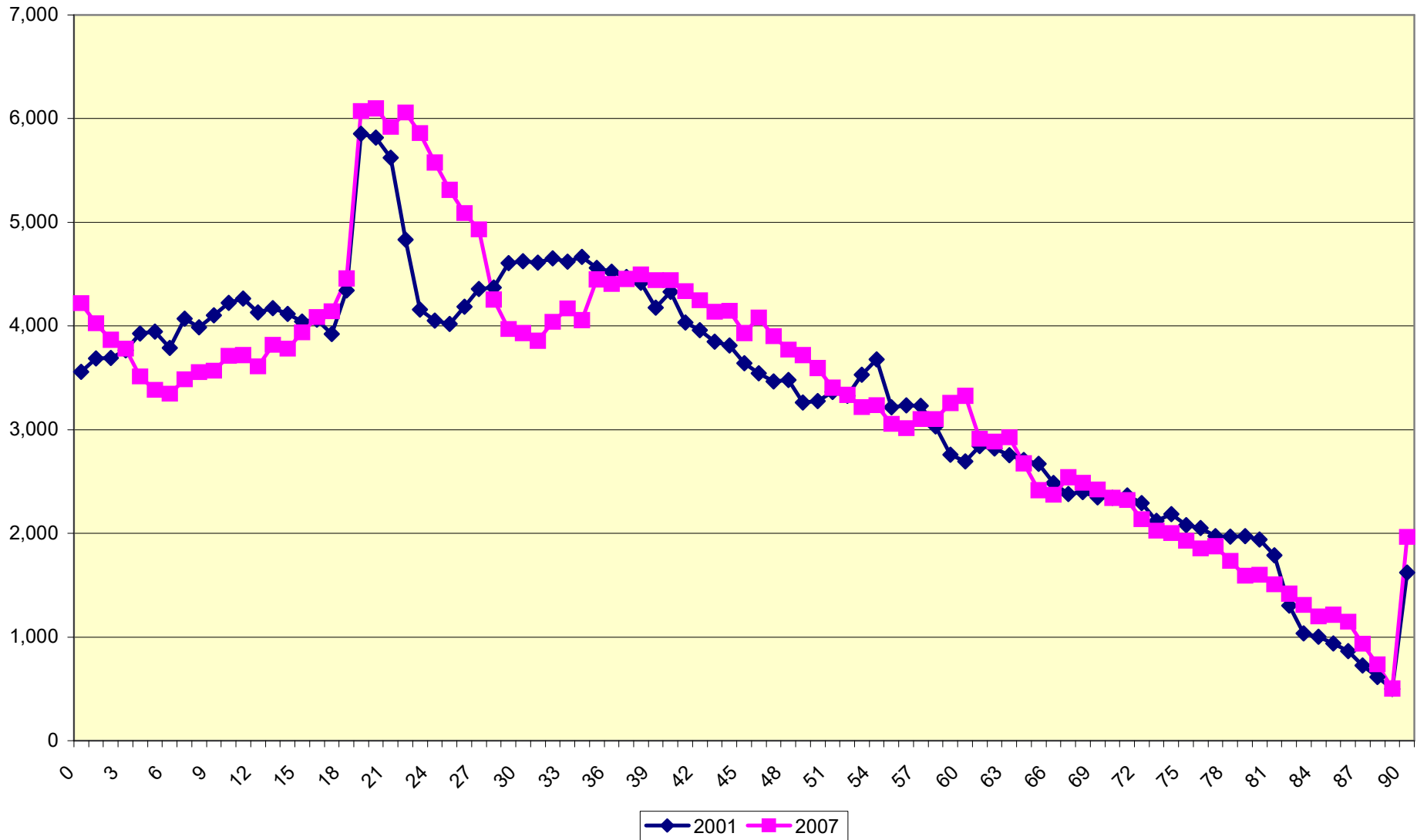
## Impact of proposed changes: Total Fertility Rate (TFR)



# Sex Ratios - London



# Age Structure - Coventry



# Households: Westminster

## CLG Household Projections

2001	100.0k
2006	113.2k
Change	13.1k

2006 (rev)	115.0k
Change	15.0k

## Actual New Homes

2001-06 4.7k

**2006 MYE may be c10% too high** – revised even more so.

# Households: Newham

## CLG Household Projections

2001	91.6k
2006	94.9k
Change	3.2k

2006 (rev)	93.9k
Change	2.3k

## Actual New Homes

2001-06 6.0k

**2006 MYE may be c4% too low** – revised even more so.

# Impacts on London

<b>Students</b>	<b>To Study</b>	17,800
	<b>Post Study</b>	51,400
	<b>Counter Adj.</b>	-24,400
	<b>Total</b>	<b>44,800</b>
<b>International</b>	<b>Inflow</b>	-500
	<b>Outflow</b>	-11400
	<b>Balance</b>	<b>10,900</b>
<b>Other</b>		<b>2,400</b>
<b>Total</b>		<b>57,900</b>

# Impacts on Boroughs - 1

## To Study:

Southwark	3,500
<b>Bromley</b>	<b>-1,200</b>

## Post Study:

Wandsworth	5,600
<b>Camden</b>	<b>-300</b>

## Student Net:

Lambeth	4,300
<b>Bexley</b>	<b>-300</b>



# Students

Improves age-structure in University areas – which see fewer ‘maturing’ graduates

Compensates for late GP re-registration – improves flows to ‘first job’ areas – ie London

London – gains from latter – mainly inner boroughs

**Problem:**

**Does the HESA data take any account of students moving between boroughs while still undergrads?**

# Impacts on Boroughs - 2

## International Inflow:

Hounslow	9,300
----------	-------

Richmond	-7,700
----------	--------

## International Outflow:

Camden	13,600
--------	--------

Redbridge	-7,700
-----------	--------

## International Net:

Hounslow	9,300
----------	-------

Camden	-19,700
--------	---------

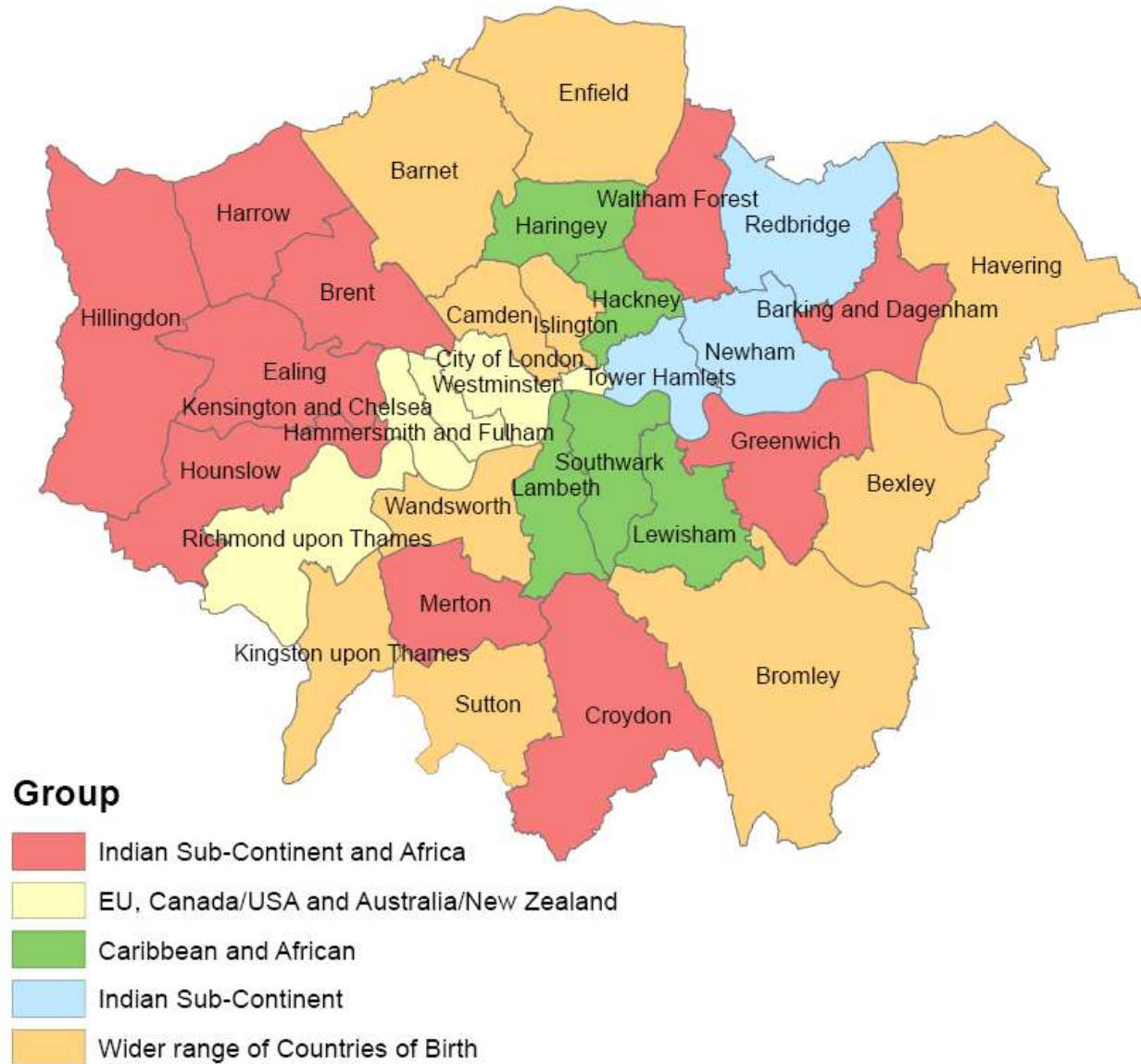
# Immigrants

## ONS Method: Model-based approach

- Uses admin. data (NINo, Flag 4) and socio-economic data (2001 Census/ASHE) to distribute IPS flows to LAs
- LAs constrained within NMGi

In London changes only within each of the 5 borough groups (NMGi)

# NMGi in London



# Immigrants

## Problems:

In using ASHE employment data the model overlooks the impact of inter-borough commuting, particularly to low-paid work in high-status areas

Flag4/NINo do not account for returning Brits.

How robust is LFS distribution to London and to NMGi?

Overseas students – 2001 Census still used

London Institutions have 28% of full-time Overseas Students in E&W (HESA – 2007/08)

# Emigrants

Refined model-based probability estimation method.

Very significant impacts

**Problems:**

**Lack of true covariates (ie no equivalent to NINo/Flag4)**

**The methodology is still somewhat opaque.**

**Are the rare households without exclusive bath/WC so critical to international outflows?**

**Does not appear to constrain to NMGo – as described.**

# Impacts on Boroughs - 3

## Overall positive (22):

Southwark	11,500
Hounslow	11,100
Barnet	9,500

## Overall negative (11):

Camden	-20,000
Brent	-9,400
Haringey	-6,600

# Conclusions

## Students

- welcomed improvement
- sensible outcomes

## Inflows

- problems with use of LFS and NMGI
- not enough impact in the right places
- is model suitable for London?

## Outflows

- too much a Black Box
- huge impact

## General

- basic sense checks still show problems



**John.Hollis@london.gov.uk**

**020 7983 4604**