

GREATER**LONDON**AUTHORITY

Data Management and Analysis Group

Greater London Demographic Review 2002

**DMAG Briefing 2003/29
December 2003**

Georgia Hay

ISSN 1479-7879

For more information please contact:

Georgia Hay
Data Management and Analysis Group
Greater London Authority
City Hall (5 East)
The Queen's Walk
London SE1 2AA

Tel: 0207 983 4347

Georgia.Hay@london.gov.uk

Copyright © Greater London Authority, 2003

Any Census data produced in this briefing has been reproduced with the permission of the Controller of Her Majesty's Stationery Office and the Queen's Printer for Scotland and is © Crown Copyright. An acknowledgement of the source is given at the end of each table.

ISSN 1479-7879

Greater London Demographic Review: 2002

Contents	Page
Key Features of 2002	1
Introduction	2
Resident Population	3
<i>Total</i>	
<i>Age Distribution</i>	
Vital Statistics	6
<i>Fertility</i>	
<i>Mortality</i>	
<i>Natural Change</i>	
<i>Life Expectancy</i>	
Migration	8
<i>Within the UK</i>	
<i>International</i>	
Demographic Projections	10
Dwellings and Households	13
Ethnic Groups and Religion	15
Electorate	19
Education Statistics: January 2003	20
Key Statistics: London and the United Kingdom 2002	23
General Sources:	24
<i>Greater London Authority</i>	
<i>Office for National Statistics</i>	
<i>Office of the Deputy Prime Minister</i>	
<i>Department for Education and Skills</i>	

Key Features of 2002

- the **population of London was estimated to be 7.355 million at mid-year**, an increase of 526 thousand since mid-1991, using the recently revised estimate.
- there were **105.6 thousand live births**.
- the **total period fertility rate (TPFR) stood at 1.62** children per woman.
- there were **57.7 thousand deaths**.
- the **standardised mortality ratio (SMR) was 97**.
- **79% of the natural population increase in England and Wales occurred in London**.
- the **life expectancy of males** in London was **75.7 years** and for **females** was **80.7 years**
- **155 thousand persons moved into London from the rest of the UK while 263 thousand departed**, leaving a net internal migration loss of 108 thousand, 24 thousand more than in 2001.
- **199 thousand international migrants (including asylum seekers and visitor switchers) moved into London in 2001, while 95 thousand former London residents emigrated overseas**. The gain of 104 thousand compares to an estimated 120 thousand in 2000.
- **during 2001-02 London became home to about 49 thousand asylum seekers and visitor switchers**.

Introduction

Each year a vast selection of demographic statistics about London is made available, particularly by the Office for National Statistics (ONS) but also by the Greater London Authority (GLA) and other government departments. It is the purpose of this *DMAG Briefing* to act as a collecting point for the most significant latest figures at the London level and to be a pointer to the sources for equivalent data at borough level. It is planned to publish a companion *Briefing* on borough profiles in early 2004. Most of the statistics of demographic stocks and flows presented here will relate to 2002, although several will relate to the mid-year period 2001-2002.

Since the release of the first results from the 2001 Census in September 2002, and the subsequent release of mid-2001 population estimates in October 2002, ONS have revised all mid-year estimates for years 1982 to 2000 (February 2003). However, in September 2003 ONS released revised estimates for 2001 together with the estimates for mid-2002. ONS now plans to further revise estimates for years 1992 to 2000 in early 2004. Even this may not be the end of revisions as it is quite possible that the 2001 estimates for Westminster and Wandsworth may be further amended following studies currently being carried out.

As a consequence any previously published statistics based upon the mid-year estimates up to 2000 will not be directly comparable with those presented in this *Briefing* that relate to 2001 and 2002.

The various projections presented here are the most recent available as at December 2003.

A selection of education statistics collected in January 2003 for the academic year 2002/2003 has also been included.

Comparisons are made between London and other parts of the nation. These comparisons vary between England and Wales, and the United Kingdom, depending on the precise nature and origins of the statistics.

Most of the 2001 Census results were released during 2003. These data have been used to improve the estimates contained in this *DMAG Briefing* relating to dwellings, households, ethnic group and labour force. They will also be reflected in future GLA and ONS/ODPM projections.

Resident Population

Total

The ONS mid-year population estimate for London in 2002 is 7,355 thousand. This is up from a revised figure 7,308 thousand in 2001. ONS revised the mid-year estimates for all years 1982-2000 in February 2003 and also revised the 2001 estimate in September 2003 following demographic analysis that indicated that the 2001 Census had missed about 120 thousand adult males from within enumerated households in London. Table 1 includes the revised 1991 population, which is now considered to be 'fixed', as well as the original 2001 estimate.

Between mid-1991 and mid-2002 London's population grew by 7.7% compared with 3.4% growth in England and Wales. The growth of London's population accelerated through the decade 1991 to 2001, but there was only a relatively small increase of 47 thousand (0.6%) between mid-2001 and mid-2002.

Table 1: ONS Mid-year Population Estimates by age groups (thousands)

	1991	2001 original	2001 revised	2002
0-4	479.4	478.0	478.2	472.6
5-9	414.4	451.4	451.6	446.4
10-14	372.1	435.7	435.8	435.4
15-29	1,744.6	1,643.6	1,694.9	1,701.0
30-44	1,513.0	1,849.2	1,912.4	1,960.6
45-64	1,342.0	1,438.1	1,442.8	1,450.4
65-74	518.7	468.1	468.3	466.9
75-84	347.2	310.7	310.8	311.7
85+	98.0	113.1	113.1	110.4
Total	6,829.3	7,188.0	7,307.9	7,355.4

Source: ONS Population Estimates Unit

Age Distribution

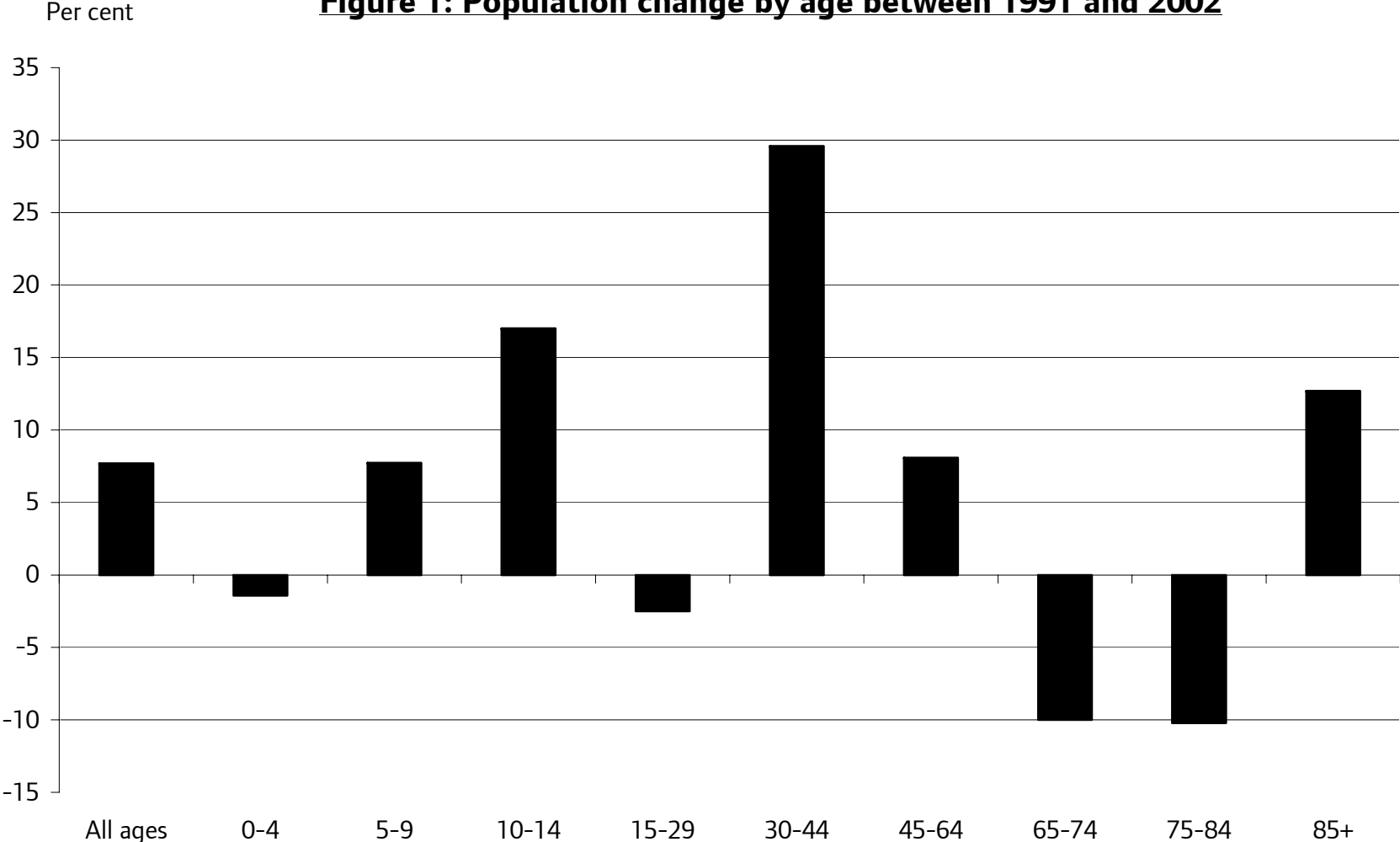
London has seen an increase in its population since 1991 in all age groups except 0-4, 15-29, 65-74 and 75-84, however in 2001-02 there were losses recorded at all age groups in the range 0-14 as well as continuing losses at 65-74 and for the 85+ group for the first time. The age groups 15-29 and 75-84 are now showing modest increases. The decline in the population aged 15-29 since 1991 partly reflects past national changes in the annual numbers of births: 1961 to 1976 included years with the largest post-war birth cohorts,

while 1972 to 1987 includes years with the lowest numbers of post-war births. However the 15-29 age group in London is also the only one that consistently benefits from net migration into London. The fall in the 65-74 age group is mirrored in the England and Wales figures but the decline of those aged 75-84 is contrary to national trends. This reflects the tendency of the elderly to seek more suitable accommodation outside London.

The low proportion of the older age groups in London can also be seen from dependency ratios. These are used to show the percentage of children (aged 15 and under) and the elderly (65 and over for men, 60 and over for women) to the working age population. London has a dependency ratio of 21.1 for the elderly, compared with 29.9 for England and Wales. This follows the trends seen in the population figures shown in Table 1. The dependency ratio for children shows a more similar picture for London and England and Wales, 29.5 and 32.2 respectively. The similar proportions of children are also mirrored by the similar fertility rates, which are discussed below. Overall dependency in London, at 50.6, is significantly lower than that in England and Wales, 62.1.

Sources: *ONS Population Estimates Unit*
 ONS Population Trends 114 Table 1.2

Figure 1: Population change by age between 1991 and 2002



Source: ONS Population Estimates Unit

Vital Statistics

Fertility

The number of live births to residents of London increased to 105,603 in 2002 from 104,162 in 2001. This is equivalent to a crude birth rate (CBR) of 14.4 births per thousand population and a total period fertility rate (TPFR) of 1.62 births per woman. There were 669 thousand births in the United Kingdom in 2002, equivalent to a crude birth rate of 11.3 and a TPFR of 1.64. In England & Wales in 2002 there were 596 thousand births, equivalent to 11.4 per thousand population and a TPFR of 1.65. London's young age structure is the principal reason for the high crude birth rate, since the TPFR indicates that overall fertility rates in London are virtually the same as in the United Kingdom. However, in London the TPFR has fallen from 1.74 in 1991, whereas in the UK it has fallen more rapidly, from 1.82 in 1991.

Mortality

Deaths of London residents have fallen steeply from 59,322 in 2000 to 58,166 in 2001 and to 57,656 in 2002. This is equivalent to a crude death rate of 7.8 per thousand population. The year-on-year change in the number of deaths is not significant in itself, since annual numbers of deaths are liable to fluctuate depending upon the harshness of the winter and the virulence of seasonal infectious diseases.

Once again the young age structure of London is an important factor when making national comparisons. The number of deaths in the United Kingdom is 606 thousand: equivalent to a crude death rate of 10.2. In England & Wales there were 534 thousand deaths, also equivalent to a rate of 10.2 per thousand. London's Standardised Mortality Ratio (SMR) of 97 shows that the underlying age-specific mortality levels in London are about 3% below that for England & Wales (100). Therefore, London's overall slightly better mortality accounts for about one-eighth of the difference in the crude death rates between London and England & Wales, the rest being mainly a consequence of the young age-structure.

There were 594 infant deaths (ie under one year of age) in London in 2002, compared with 637 and 565 in 2001 and 2000 respectively. The infant death rate was 5.6 (per thousand live births), slightly higher than the averages for both England and Wales and the United Kingdom that stand at 5.2.

Natural Change

The difference between births and deaths is the natural change of a population. In 2002 in London this stood at 47,947 higher than the 45,996 in 2001. In both England and Wales and the United Kingdom in 2002 natural change was 60.8 thousand. Therefore, London provided 79% of the national natural population growth – enormous when compared with its 14.0% of the population of England and Wales or 12.4% of the UK population. This reflects London's younger age structure and therefore the resulting relatively high numbers of births and relatively few deaths.

Life Expectancy

The ONS life expectancy at birth figures are a three-year average, based on deaths (by age and gender) occurring in the period 2000 to 2002 together with the (revised) mid-2001 estimates. Life expectancy at birth in London was 75.7 years for males and 80.7 years for females. This compares with 75.9 years and 80.6 years for males and females respectively in England and Wales.

Sources: *ONS DVS1 and DVS2 Forms*
 ONS Population Trends 114 Tables 2.1 and 2.2
 ONS (2003) Life expectancy at birth by health and local authorities in
 England and Wales, 2000-2002

Migration

Within the UK

The principal source of migration information for moves within the United Kingdom is the National Health Service Central Register. In 2002 this showed that 154,800 persons moved into London while 262,500 moved away. The net loss to the rest of the UK of 107,800 is considerably higher than that recorded in 2001 (84,500) and is more than twice the levels recorded in any year between 1991 and 1998. The key change since 2001 is the rise of 18,300 in those persons leaving London. There was a reduction of 4,900 persons coming to London.

International

The latest detailed international migration data available relate to all flows into and out of the UK up to the end of 2001. These show that in 2001 480 thousand migrants entered the UK and 308 thousand left, a net inflow of 172 thousand that surpasses any year in the previous decade. Of these flows it was estimated that 199 thousand came to London while 95 thousand left London for Overseas. The net inflow to London of 104 thousand was a reduction from 120 thousand in 2000. Provisional details of flows to and from the UK in 2002 show that there were increases to 513 thousand arrivals and 359 thousand departures leading to a net gain of 153 thousand, the lowest since 1998.

The 2001 Census cast serious doubt about all international migration flows for the UK throughout the last decade. ONS have admitted that the IPS has failed to capture sufficient emigrants. In relation to London the destinations of immigrants are also likely to be inaccurate. ONS have now revised all regional flow data for years back to 1992. As part of the National Statistics Quality Review on International Migration the methodologies relating to the International Passenger Survey, the estimation of flows with the Republic of Ireland and the assignment of asylum seekers and visitor switchers are all under review.

Asylum seekers and visitor switcher numbers are included in the above figures for the UK from which the London estimates have been made. In the preparation of the 2002 mid-year estimates ONS made separate estimates of the additional numbers of these people arriving in each local authority over the previous year. For London this amounted to 48,600 persons and the asylum element was based upon data from the National Asylum Seeker Service on the location of those asylum seekers that it supported.

Home Office records indicate that there were 75,675 new asylum applicants in 2001-02 and 84,130 in calendar year 2002. By the end of September 2003 the annual total has fallen to 61,300.

Sources: *ONS Migration Statistics Unit*
 ONS Series MN no. 28: International migration.
 ONS Population Trends 114 Tables 7.1 and 8.1
 Home Office Asylum Statistics: 3rd Quarter 2003

Demographic Projections

The GLA prepares an annual round of borough demographic projections, incorporating the latest estimates of births, deaths and migration flows as well as any new government data, such as projections of marital status, household representative rates and economic activity rates.

The 2002 round of GLA demographic projections was produced, using the original ONS mid-2001 estimate as a base. A range of migration led population projections were prepared as part of the monitoring of the Mayor's Spatial Development Strategy. The results of the three variant projections are shown below. The Central projection is based upon continuing the average migration levels of 1996-2001. The Low projection extends average international migration levels in 1996-2001 together with UK migration based largely upon 2000-01. The High Projection extends average UK migration levels in 1996-2001 together with international migration based largely upon 2000-01. These two variants reflect the recent continuing rise in International migration to London and the equivalent rise in UK migration away from London.

Table 2: GLA 2002 Round of Demographic Projections for London 2001-2016. (thousands)

Population	2001	2006	2011	2016
Low	7,188	7,327	7,467	7,601
Central	7,188	7,442	7,679	7,899
High	7,188	7,596	7,961	8,287

The Central projection was been converted to household and labour force projections. It was also been use as the basis for a forecast equivalent to that used in the *draft London Plan* (Scenario 7.9).

Table 3: GLA 2002 Round of Demographic Projections for London 2001-2016. Central Projection. (thousands)

	2001	2006	2011	2016
Households (1)	3,023	3,146	3,268	3,394
Households (2)	3,023	3,131	3,229	3,321
Labour Force	3,847	4,057	4,221	4,325

In Table 3 the projection of households labelled (1) is based directly upon the household representative rates used in the latest (1996-based) ODPM household projections adjusted in light of the 2001 Census, while household figures labelled (2) are more directly comparable to the forecast used in the *draft London Plan* as these have been 'benchmarked' based upon a constant average household size from 2001 onwards. The growth in households (2) over the period 2001-16 is 299 thousand compared with 311 thousand in the *Plan*. On the other hand the growth in the labour force is now likely to be slightly higher, at 478 thousand compared to 464 thousand in the *Plan*.

Provisional GLA 2003 round projections are presented below. They are based upon the revised mid-2001 and mid-2002 estimates and an analysis of migration trends over the period 1997-2002. It has been assumed that household totals at mid-2001 were unaffected by the additional 120 thousand persons. The household totals are equivalent to households (2) above and the labour force projections utilise economic activity rates drawn from the 2001 Census for persons aged 16-74. Households show an increase over the fifteen years of 340 thousand, while the labour force is still expected to rise by 478 thousand persons.

Table 4: GLA 2003 Round of Demographic Projections for London 2001-2016. Provisional Central Projection. (thousands)

	2001	2006	2011	2016
Population	7,308	7,588	7,863	8,117
Households	3,023	3,141	3,253	3,363
Labour Force (16-74)	3,699	3,900	4,063	4,177

ONS has not yet prepared sub-national population projections based upon the 2001 Census results. The next ONS/ODPM demographic projections for London will be 2002-based projections available in 2004 (population) and 2005 (households). These will be controlled by the Government Actuary's 2002-based national projections. These were released on 18 December and have a national long-term net migration assumption of 103 thousand persons, including 15 thousand asylum seekers, per year.

Sources: *GLA Population and Household Forecasts based on the First Results from the 2001 Census, SDS Technical Report 23 and forthcoming GLA DMAG Briefing 2003/10.*
GLA 2003 Round Demographic Projections (forthcoming)
GAD 2002-Based National Population Projection

Dwellings and Households

Definitions:

Dwelling: structurally separate accommodation. This is determined from the information on the census form which referred to unshared entrances or shared entrances in accommodation occupying part of a converted or shared house, bungalow or flat.

Household: Either one person living alone or a group of people living, or staying temporarily, at the same address, with common housekeeping. 'Common housekeeping' includes any regular arrangement to share at least one meal a day (including breakfast), or if the occupants shared a common living sitting room.

Estimates of dwellings and households in London are available from a number of sources based upon official returns and surveys.

The ODPM estimates that at 31 March 2002 London had 3.106 million dwellings (*ODPM Housing Statistics website Table 109*). This compares with the number of dwellings on the Council Tax Valuation Lists in all London boroughs of 3.126 million at 26 March 2002 (*ODPM Council Tax Form CTB1*). There are definitional differences between these two sets of estimates so it cannot be said that they are inconsistent – only that they attempt to measure slightly different things.

ODPM also estimates that London had 3.210 million households (*ODPM Housing Statistics website Table 403*). However, this estimate is based upon the 2002 mid-year estimate and the ODPM household projection model based upon the 1991 Census. A 2001-based model is in preparation and will produce results in early 2005, meanwhile it is best to set aside the latest ODPM estimate. The 2001 Census shows 3.016 million households (Key Statistics). Prior to the 2001 Census counts, the estimates of the number of households in London are even more at variance. The *Survey of English Housing* estimates 3,035 thousand for financial year 2000-01 and 2,879 thousand for 2001-02 (*ODPM Housing Statistics website SEH Table A9.1*). The discrepancy is explained by grossing the 2001-02 survey using the, much lower, original 2001 mid-year population estimate.

As seen in Table 4 (above) the latest GLA estimate for mid-2001, based upon the 2001 Census, is 3,023 thousands. This converts to an estimated 3.043 million households at mid-2002.

The detailed results of the 2001 Census will greatly assist in arriving at new baseline figures for both households and dwellings in both the ODPM and GLA projections.

Sources: *ODPM Housing Statistics*
 GLA provisional 2003 round of projections

Ethnic Groups and Religion

2001 Census

Data from the 2001 Census gives the most recent information on ethnicity and religion in London. Data can be found in *DMAG Briefing 2003/9*.

Labour Force Survey

Labour Force Survey (LFS) data for the period March 2001 to February 2002 for ethnic groups is shown in Table 5. These figures are for working age people (16–64 for men and 16–59 for women). The data contained in the table have not been adjusted to take account of the 2001 Census results. The economic activity rate is the percentage of the working age population that is economically active (either in work or unemployed). The employment rate is the number of employed people as a percentage of the working age population, while the unemployment rate is the number of unemployed people as a percentage of all economically active people.

Although they are based on the 2001 Census categories, the ethnic categories used in the LFS do not match exactly with those used in the Census; notably there is no 'White Irish' category in the LFS, these persons would fall into the 'White Other' category.

For the unemployment figures, the sample size for some groups is too small to give a reliable estimate. The 'mixed', 'Chinese' and 'Other Ethnic group' categories have been grouped into 'All other groups' for unemployment data.

Table 5: Labour Force Survey, Working Age Economic Activity, Employment and Unemployment Rates (per cent), by Ethnicity, 2001-02.

	Economic Activity	Employment	Unemployment
White British	81.2	77.5	4.6
White Other	72.1	66.7	7.5
Black Caribbean	72.8	63.9	12.2
Black African	63.6	54.1	15.0
Black Other	66.0	54.4	*
Indian	71.5	67.1	6.1
Pakistani	56.9	48.1	15.4
Bangladeshi	41.6	31.5	24.2
Other Asian	67.9	60.5	11.0
All other groups			10.8
Mixed White/Black Caribbean	72.4	59.4	
Mixed White/Black African	62.5	57.0	
Mixed White/Asian	69.9	56.7	
Mixed Other	*	*	
Chinese	60.7	58.3	
Other Ethnic Group	61.4	55.0	
Total	75.5	70.5	6.7

Source: © Crown Copyright, ONS, Annual Local Area Labour Force Survey 2001/02

* denotes sample size too small for reliable estimates

Using 2001 Census data, it is possible to generate unemployment figures for all ethnic categories. The Census unemployment measure, like the LFS, is broadly based on the International Labour Organisation (ILO) definition of unemployment. However, the two measures are not strictly comparable as there are a number of methodological differences between the surveys. As well as these issues, the time periods of measurement are different and the LFS includes full-time students whereas the Census does not.

Table 6: 2001 Census, Unemployment, persons aged 16-74, by Ethnicity.

	Per Cent
White British	5.0
White Irish	5.9
White Other	7.2
Black Caribbean	12.3
Black African	16.0
Black Other	17.6
Indian	5.9
Pakistani	12.2
Bangladeshi	20.5
Other Asian	9.3
Mixed White/Black Caribbean	15.6
Mixed White/Black African	14.7
Mixed White/Asian	9.2
Mixed Other	11.2
Chinese	7.1
Other Ethnic Group	10.4
Total	6.7

Source: *GLA calculations based on 2001 Census standard table (ST108)*

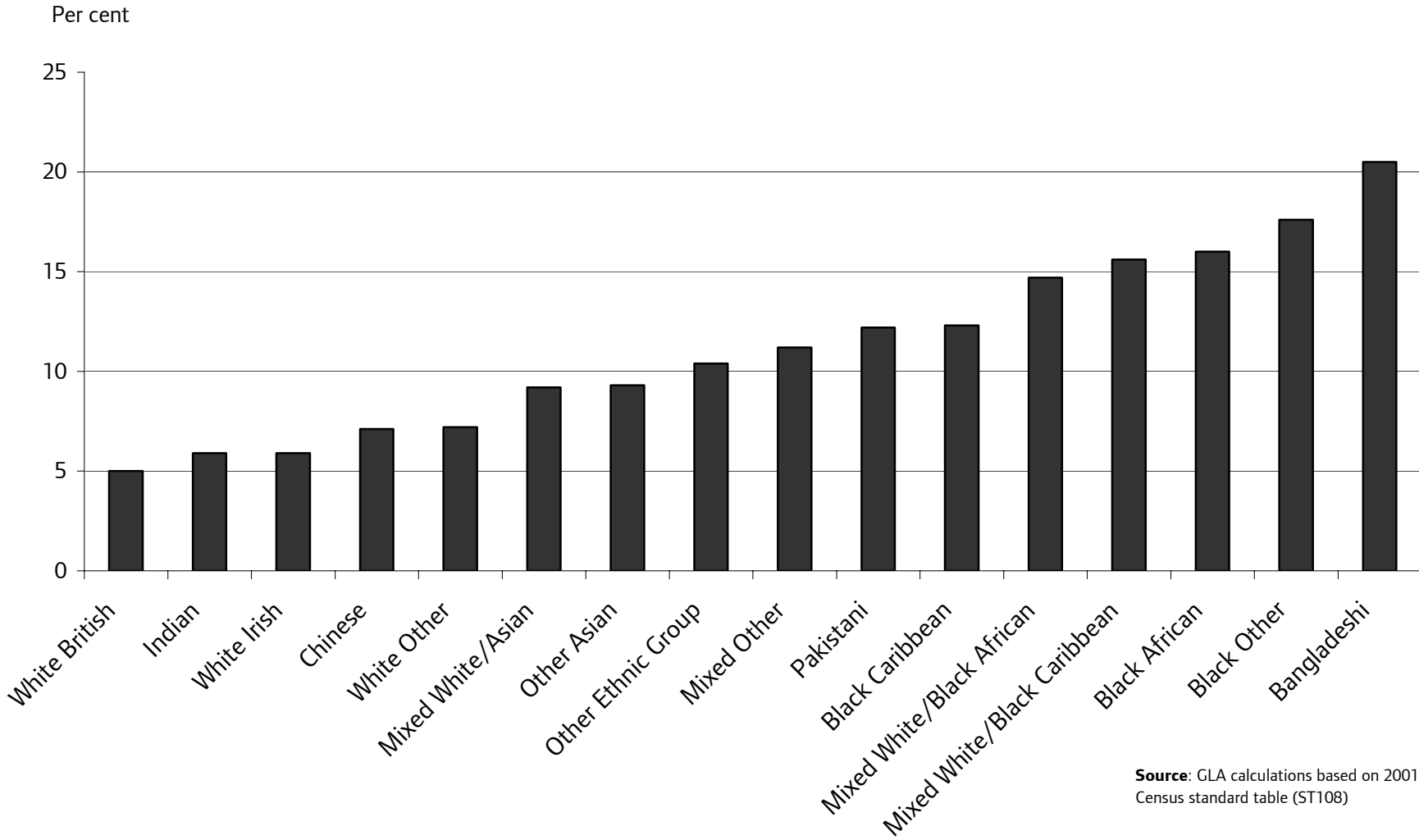
Both the LFS and the 2001 Census show that the unemployment rates for White British are below the London average whereas all individual ethnic minority groups have rates above the overall London figure. Particularly high are the unemployment rates for the Bangladeshi group where there are also the lowest economic activity rates. The low economic activity rates are seen particularly among the Bangladeshi women, who traditionally look after the home and therefore may not work.

More statistics on ethnicity are presented in the education section.

Further data and commentary on the Labour Force Survey can be found in *DMAG Briefing 2003/26*.

Sources: *ONS, Annual Local Area Labour Force Survey 2001/02*
GLA calculations based on 2001 Census standard table (ST108)

Figure 2: 2001 Census, Unemployment Rate by Ethnicity



Source: GLA calculations based on 2001 Census standard table (ST108)

Electorate

The electorate statistics are based upon two dates. Up until the 2001 Register it included persons who were aged 18 and over on 16 February resident at the qualifying date of the previous 10 October. For the 2002 Register the Summary (Form RPF 29) includes persons aged 18+ on 1 December 2001 who were resident at the qualifying date of 15 October 2001. This change is part of the new 'rolling register' arrangements that mean that voters may be added to the register during the year of its currency. Therefore the data collected in 2001 relate, mainly, to the 2002 electoral register and similarly data collected in 2002 mainly relate to the 2003 electoral register. The following table shows the trends for London and the United Kingdom starting with the 1992 register based upon the qualifying date of 10 October 1991.

Table 7: Local Government Electorate (thousands)

Register		London	United Kingdom
February	1992	4,911	43,694
	1993	4,877	43,698
	1994	4,888	43,770
	1995	4,893	43,880
	1996	4,979	44,142
	1997	5,028	44,416
	1998	5,045	44,559
	1999	5,063	44,693
	2000	5,115	44,756
	2001	5,159	44,896
December	2001	5,216	45,056
	2002	5,219	44,743

Over the period 1992 to 2003 the local government electorate increased by 6.3% in London and by 2.4% nationally. London now forms 11.7% of the national electorate, a proportion that continues to grow. The recent growth in the electorate, particularly between the 1995 and 1997 registers, has been influenced by the Local Government Elections Regulations 1995, which extend the right to vote in local elections to all European Union citizens who meet the same qualifying requirements as Irish and Commonwealth citizens.

Sources: *ONS Series EL*
ONS RPF 29 Returns

Education Statistics: January 2003

The DfES maintains statistics for schools in England. The following tables for London have been extracted from the new edition of "Statistics of Education: Schools in England", a statistical volume containing school data for the academic year 2002/03. It is the main source of education statistics for England as whole. All London schools designated as 'nursery schools' are maintained by local education authorities (LEA's).

Table 8: School Numbers and Types: January 2003

Nursery	86
Primary	1,862
Secondary	407
Total	2,355

In addition to the above, London has 157 Special schools, (of which 152 are LEA maintained), 58 Pupil Referral Units, 456 Independent schools, 5 City Technology Colleges and 2 City Academies: 3,033 establishments in all, a reduction of 16 over the year.

Table 9: School Pupil Numbers (Full-time Equivalent): January 2003 (thousands)

Nursery	5.5
Primary	606.9
Secondary	417.6
Total	1,030.0

A further 11.9 thousand children were in Special schools, 2.6 thousand in Pupil Referral Units, 122.9 thousand in Independent schools, 5.2 thousand in City Technology Colleges and 1.6 thousand at City Academies: equivalent to 1,174.2 thousand full-time pupils in all, an increase of 6.3 thousand over the year.

Table 10: Teacher Numbers (Full-time Equivalent): January 2003 (thousands)

Nursery	0.4
Primary	28.7
Secondary	27.3
Total	56.3

There were 2.3 thousand teachers in Special schools, 0.6 thousand in Pupil Referral Units, 12.2 thousand in Independent schools, 0.4 thousand in City Technology Colleges and 0.1 thousand in City Academies: equivalent to 71.9 thousand full-time teachers in all, an increase of 1.7 thousand over the year.

The DfES also records the ethnic group of most pupils in maintained primary and secondary schools.

Table 11: Ethnic Group of Primary Pupils: January 2003 (thousands)

	Inner London	Outer London	Greater London
White British	44.7	166.6	211.3
White Irish	2.2	3.7	5.9
Other White	16.3	19.3	35.6
Black Caribbean	20.3	14.3	34.6
Black African	28.3	21.2	49.5
Black Other	4.7	4.1	8.8
Indian	4.8	22.7	27.4
Pakistani	4.9	11.8	16.6
Bangladeshi	18.0	3.1	21.1
Mixed	14.7	19.7	34.5
Chinese	1.4	2.1	3.5
Other Asian	3.0	9.1	12.1
Other	8.8	9.0	17.8
All (Classified)	172.2	306.5	478.8
Unclassified*	3.7	8.3	12.0

This table relates to pupils of compulsory school age attending maintained primary schools, although some schools classified below age children.

* Children are unclassified either because parents had refused to provide information or because information was not sought.

Table 12: Ethnic Group of Secondary Pupils: January 2003 (thousands)

	Inner London	Outer London	Greater London
White British	34.1	151.4	185.5
White Irish	2.1	3.2	5.3
Other White	10.8	18.3	29.1
Black Caribbean	15.5	13.7	29.2
Black African	19.3	16.5	35.8
Black Other	3.6	4.0	7.5
Indian	4.6	27.1	31.7
Pakistani	3.9	10.1	14.0
Bangladeshi	14.1	2.4	16.5
Mixed	7.6	12.1	19.7
Chinese	1.3	2.4	3.7
Other Asian	2.4	7.4	9.9
Other	7.0	8.4	15.4
All (Classified)	126.3	276.9	403.2
Unclassified	1.4	13.3	14.7

This table relates to pupils of compulsory school age and above attending maintained secondary schools.

* Children are unclassified either because parents had refused to provide information or because information was not sought.

While not claiming to be comprehensive these data do help to monitor changes in the ethnic composition of London's population and are used as one of a number of independent checks in the GLA ethnic group estimates and projections.

Source: *DfES 'Statistics of Education Schools in England'*

Key Statistics: London and the United Kingdom 2002

	London	UK
Resident Population (at mid-year)	7,355,400	59,229,000
Births	105,603	668,800
Crude Birth Rate (/1000 population)	14.4	11.3
Total Period Fertility Rate (births/woman)	1.62	1.64
Deaths	57,656	606,300
Crude Death Rate (/1000 population)	7.8	10.2
Standardised Mortality Ratio	97	100
Infant Deaths (under 1 year)	594	3,500
Infant Death Rate (/1000 live births)	5.6	5.2
Natural Increase	47,947	62,500
Migrants		
From Rest of UK	154,800	NA
To Rest of UK	262,500	NA
From Overseas (London 2001: UK 2002)	199,000	513,000
To Overseas (London 2001: UK 2002)	95,000	359,000
Net Flow (2001-02)	+400	+116,000
Asylum Seekers & Visitor Switchers (2001-02)	48,600	(84,100*)
Dwellings (mid-2002)	3,106,000	25,617,000
Households (mid-2002: London, GLA: UK, ODPM)	3,043,000	24,346,000
Electors (December 2002 Register)	5,219,292	44,743,000
School Pupils (Jan 2003)	1,030,000	7,497,443 [#]

* new asylum applicants in 2002

[#] England and Wales

General Sources:

Greater London Authority (GLA)

The main vehicle used by GLA to disseminate demographic information is the *DMAG Briefing* series. Coverage includes the latest population estimates and projections (both GLA and ONS/GAD), household projections (GLA and ODPM) and aspects of vital statistics and migration. The *Briefings* usually give headline information at borough level. The *Technical Papers* series give more detail on selected topics, such as migration.

Detailed output is distributed directly to established users on CD-Rom and via the GLA Demography Extranet. Data may be made available to other users upon request.

Since 1996 the GLA (formerly as the LRC) has co-operated with ONS and the Government Office for London to produce the *Focus on London Series*. *FoL* covers a wider range of data than just demography but includes a number of detailed demographic analyses comparing London and the boroughs with the UK. *Focus on London 2003* was published in June 2003 and is available from The Stationery Office or via the National Statistics website at:

http://www.statistics.gov.uk/downloads/theme_compendia/FOL2003/00Prelims.pdf

GLA Demographic data is disseminated through Demography Extranet. Access to this website is password restricted. Please contact Michael Minors (020 7983 4654) if you wish to gain access to the extranet.

Office for National Statistics (ONS)

ONS release data in a series of Booklets. These Booklets give details of sources and methodology as well as analysis of the data itself. These series are also available on the National Statistics website.

The main series are:

- DH2 Deaths by cause and area of residence
- EL Electoral Statistics
- FM1 Live Births by area of residence
- MN International Migration
- PE Population Estimates
- PP2 Population Projections - National (Prepared by the Government Actuary's Department)
- PP3 Population Projections - Local
- VS Vital Statistics (Also available as spreadsheets)

A number of other statistics are available to local authorities, some by request only. Vital statistics are sent to local authorities on forms DVS1 to DVS5 and electorate information is made available on RPF29 forms, which the local authorities each prepare for their own areas. Details of the change analysis in the annual mid-year estimates are available on MIG2 forms as well as the nationally consistent full change tabulation. All of these tables are available via Dennis Grenham (020 7983 4532) or John Hollis (020 7983 4604).

The quarterly *Population Trends* includes useful series of tables showing data (mostly rounded) at the national level, with some regional statistics. Articles analyse recent trends and describe methodology and technical developments. In *Population Trends* no.112 there is an article: *Population review of 2001: England and Wales*, which provides some comparative information to much of that presented in this volume. It also gives details about topics such as abortion, marriage, divorce and adoption, for which analysis below national level is less meaningful.

ONS is also responsible for preparing the national and regional projections of the labour force. These are published in *Labour Market Trends*, formerly *Employment Gazette*. The most recent projections were published in the *Labour Market Trends* magazine in June 1998 and cover the period up to 2011. These are expected to be updated sometime in 2004.

The website for the ONS is: <http://www.statistics.gov.uk>

Office of the Deputy Prime Minister (ODPM)

This department has taken on the housing, household and planning responsibilities of the Department of Transport, Local Government and the Regions, itself formerly the DETR. Household projections for sub-national areas of England are published every four or six years, following the availability of a new set of ONS long term subnational population projections. The projections are available for London boroughs. Headline figures by household type for London are provided in the published report, with more detailed output down to boroughs being available from ODPM. The latest report covers the DETR 1996-based projections: *Projections of Households in England to 2021*. Analyses for each borough are available from the GLA and have been published in *LRC Population Advice Note 99-5*. 2002-based projections are due to be published in 2005.

Housing Statistics, and housing research, including the Survey of English Housing are available on the following website:

<http://www.odpm.gov.uk> and then click on housing.

Council Tax statistics are also available through the ODPM, and can be found on the following website:

<http://www.local.doe.gov.uk/finance/ct.htm>

Department for Education and Skills (DfES)

DfES statistics in 'Statistics of Education Schools in England' may be found on the their website:

http://www.dfes.gov.uk/rsgateway/DB/VOL/v000417/schools_volume_2003.pdf

Regular Briefings from the GLA Data Management and Analysis Group

In 2002 DMAG instituted a new series of publications, covering all aspects of DMAG work.

DMAG Briefings now incorporate the *Census Information Notes (CIN)* and *Population Advice Notes (PAN)*. The traditional content of both series will still appear regularly. Some *Briefings* continue to be dual-labelled as *CINs*.

The latest *DMAG Briefings* are:

DMAG 2003/1	Disabled people and the labour market	Lorna Spence
DMAG 2003/2	2001 Borough Demographic Profiles	Baljit Bains/ Iryna Pylypchuk
DMAG 2003/3	2002 Round of Demographic Projections	John Hollis/ Baljit Bains
DMAG 2003/4	Greater London Demographic Review: 2001	Baljit Bains/ Iryna Pylypchuk
DMAG 2003/5	Census Information Note CIN 2003-1	Eileen Howes
DMAG 2003/6	Third country nationals living in London 2000/01	Lorna Spence
DMAG 2003/7	2001 Census Key Statistics: Initial summary of results	Eileen Howes
DMAG 2003/8	2001 Census Key Statistics: Household variables	John Hollis
DMAG 2003/9	2001 Census Key Statistics: Ethnicity, religion and country of birth	Eileen Howes
DMAG 2003/10	Household Forecasts based on 2001 Census Key Statistics	John Hollis
DMAG 2003/11	2001 Census: Copyright and Licensing for Census users	Rachel Leeser /Hywel Davies
DMAG 2003/12	Women and the Labour Market	Lorna Spence
DMAG 2003/13	2001 Census Key Statistics: Means of travel to work	Eileen Howes
DMAG 2003/14	2001 Census Key Statistics: People, Families and Households	Rachel Leeser
DMAG 2003/15	Census Information Note CIN 2003-2	Eileen Howes
DMAG 2003/16	2001 Census Key Statistics: Health Indicators	Gareth Piggott
DMAG 2003/17	Public sector employment in London	Lorna Spence
DMAG 2003/18	Trade union membership in London	Lorna Spence
DMAG 2003/19	Fertility of Ethnic Groups in London	Ed Klodawski
DMAG 2003/20	ONS 2001 (revised) and 2002 Mid-year Population Estimates	John Hollis/ Baljit Bains
DMAG 2003/21	Workless Households with dependent children in London: Output area maps	Declan Gaffney/ Bill Armstrong
DMAG 2003/22	Mapping Diversity: 2001 Census results	Eileen Howes
DMAG 2003/23	2001 Census: Ethnic Groups in London and other districts	Eileen Howes/ Giorgio Finella
DMAG 2003/24	Cross-border pupil mobility	David Ewens
DMAG 2003/25	Integrating the 2001 Census into the GLA Demographic Models	John Hollis
DMAG 2003/26	Unemployment in London: An analysis of 2001 Census data	Lorna Spence
DMAG 2003/27	Census Information Note CIN 2003-3	Eileen Howes
DMAG 2003/28	Census Information Note CIN 2003-4	Giorgio Finella

Contact details for the Data Management and Analysis Group are as follows:

Rob Lewis (020 7983 4652) is **Head of the Data Management and Analysis Group**.
rob.lewis@london.gov.uk

Bill Armstrong (020 7983 4653) works in the **Census Team** with particular responsibilities for **commissioned tables, workplace data** and **mapping**. bill.armstrong@london.gov.uk

Baljit Bains (020 7983 4613) works in the **Demography Team** and is responsible for **ethnic demography**, including **ethnic group projections**. baljit.bains@london.gov.uk

Shen Cheng (020 7983 4889) works in the **Education Team** and is responsible for school roll projections.
shen.cheng@london.gov.uk

Hywel Davies (020 7983 4696) is responsible for the **SASPAC** project and for the development of **GIS** work. hywel.davies@london.gov.uk

David Ewens (020 7983 4656) is responsible for **education research and data analysis** and school roll projections. david.ewens@london.gov.uk

Georgia Hay (020 7983 4347) works in the **Demography Team** and is responsible for **ward level projections**, the **Demography Extranet** and **borough liaison**. georgia.hay@london.gov.uk

Giorgio Finella (020 7983 4328) works in the **Census Team**. giorgio.finella@london.gov.uk

Dennis Grenham (020 7983 4532) works mostly on **statistical compendia, election statistics** and **special publications**. dennis.grenham@london.gov.uk

John Hollis (020 7983 4604) is responsible for the work of the **Demography Team** and the **Social Exclusion Team**, and particularly for **demographic modelling**. john.hollis@london.gov.uk

Eileen Howes (020 7983 4657) is responsible for the work of the **Census Team**.
eileen.howes@london.gov.uk

Ed Klodawski (020 7983 4694) works in the **Demography Team**. His post is joint with the **London Health Observatory** and specialises in **ethnic** and **health** issues. edmund.klodawski@london.gov.uk

Rachel Leeser (020 7983 4699) works in the **Social Exclusion Team** with particular responsibilities for **indicators** and **income data**. rachel.leeser@london.gov.uk

Alan Lewis (020 7983 4348) is a member of the **SASPAC Team**. alan.lewis@london.gov.uk

Jackie Maguire (020 7983 4655) is responsible to the Group Head and co-ordinates the administrative and financial work of the Group. jackie.maguire@london.gov.uk

Michael Minors (020 7983 4654) is responsible for the work of the **General Statistics and Education Team**. michael.minors@london.gov.uk

Gareth Piggott (020 7983 4327) works in the **Census Team**. gareth.piggott@london.gov.uk

Lorna Spence (020 7983 4658) is a member of the **Social Exclusion Team**, with particular responsibilities for the **Labour Force Survey** and **benefits data**. lorna.spence@london.gov.uk

Please use the above descriptions in deciding whom to contact to assist you with your information needs.