

**Data Management and Analysis Group**

# **2002 Round of Demographic Projections**

**DMAG Briefing 2003/3  
January 2003**

**John Hollis  
Baljit Bains**

**ISSN 1479-7879**

# **DMAG Briefing 2003-3**

**January 2003**

## **GLA 2002 Round of Demographic Projections**

For more information please contact:

Baljit Bains  
Data Management and Analysis Group  
Greater London Authority  
City Hall (5 East)  
The Queen's Walk  
London SE1 2AA  
Tel: 0207 983 4613  
[baljit.bains@london.gov.uk](mailto:baljit.bains@london.gov.uk)

Copyright © Greater London Authority

Any Census data produced in this briefing has been reproduced with the permission of the Controller of Her Majesty's Stationery Office and the Queen's Printer for Scotland and is © Crown Copyright. An acknowledgement of the source is given at the end of each table.

All maps are © Crown Copyright. All rights reserved. (Greater London Authority)  
(LA100032379) (2003)

ISSN 1479-7879

# Contents

<b>Executive Summary</b>	<b>1</b>
<b>Introduction</b>	<b>2</b>
<b>1991 Population</b>	<b>3</b>
<b>2001 Population</b>	<b>6</b>
<b>Migration: 1991-2001</b>	<b>8</b>
<b>Fertility and Mortality: 1991-2001</b>	<b>12</b>
<b>Fertility and Mortality: After 2001</b>	<b>13</b>
<b>Variant Projections</b>	<b>15</b>
<b>Households</b>	<b>17</b>
<b>Economic Activity</b>	<b>18</b>
<b>Projection Results</b>	<b>19</b>
<b>Scenario 7.9 Forecasts</b>	<b>29</b>

## Executive Summary

- The GLA 2002 round of demographic projections are the first to incorporate data from the 2001 Census.
- The 2001 Census showed that London had a population much lower than mid-year estimates up to 2000 had implied. The mid-2001 estimate is 7.188 million persons compared to 7.411 million as used in the *draft London Plan*<sup>1</sup>.
- The Office for National Statistics (ONS) has also reported that the 1991 mid-year population estimates overstated the population of England and Wales by some 342 thousand persons, mainly amongst young single adult men.
- The implication of the changes at 1991 for London have not yet been confirmed by ONS but GLA analysis shows that the 1991 estimate should be reduced by about 64 thousand to 6.826 million, implying a growth of 362 thousand persons across the decade.
- The revised 1991 and Census-based 2001 populations imply that London received about 233 thousand fewer international migrants (net) over the decade than originally supposed – 460 thousand compared to 693 thousand.
- Following ONS advice most of this difference is due to increased movements out of London to overseas with some reductions of international migrants settling in London.
- Since the projections published in the *draft London Plan* were prepared there have been significant migration changes affecting London. The net outflow to the rest of the UK has grown while the net gain from overseas has also grown, even when allowance is made for the revisions based on the 2001 Census.
- However comparing the average net migration for 1993-98 from the original data used in the *draft London Plan* with the latest estimates for the average for 1996-01 used in these projections there is hardly any difference between the two figures – both rounding to 9 thousand a year. The main difference is found in the impact upon age structure, since the higher level of international gain brings more young adults to London while the higher level of loss to the rest of the UK reduces London's population of families with children and older persons. There is therefore an accelerated rejuvenating affect on the age structure.
- The Central projection shows a 2016 population of 7.899 million compared to, 8.149 million as in the *draft London Plan*, with total growth in population of 711 thousand between 2001 and 2016 compared to 738 thousand.
- The growth in households is projected to 417 thousand. When a 'benchmarking' process is used the growth is of the same order as indicated in *GLA Population and Household Forecasts: 2001-16*,<sup>2</sup> that is 307 thousand compared to 311 thousand.
- The economically active population is projected to increase from 3.847 million in 2001 to 4.325 million by 2016.
- These projections have incorporated all available 2001 Census data. There is no data yet available on households or on the structure of migration flows.

---

<sup>1</sup> The draft London Plan, GLA, June 2002.

<sup>2</sup> SDS Technical Report 5, GLA, May 2002.

## Introduction

The GLA 2002 round of demographic projections are the first to consider the impact of results from the 2001 Census.

In a direct sense the ONS mid-2001 population estimates for each borough form the base populations for these projections to 2016. In a less direct, but critical sense, the realisation, based upon the 2001 Census, that the mid-1991 estimates were too high also has a bearing upon the projections. This is because the revised 1991 population is used to calculate the revised level of total net migration for each borough over the decade. Also the revised 1991 population is likely to be lower by 50-70,000 persons and this too will have a bearing on estimates that fall in the intercensal period between 1991 and 2001.

ONS advice has been followed in creating new mid-1991 populations for each borough and also in estimating revised levels of international inflows and outflows to and from each borough in each year from 1991-92 to 2000-01.

Use has still had to be made of structural data from the 1991 Census on migration flows and on households as the only available 2001 data relate solely to the resident population by age and gender.

This report includes descriptions of the inputs and results of the 2002 round of projections together with forecasts developed from the projections – Scenario 7.9 - that update the demographic inputs to the London Plan.

## 1991 Population

The 'revised final' ONS mid-1991 population estimates that were published in 1993 have had to be further revised to form the base for the projection to 2001. The GLA Data Management and Analysis Group did the revision in an equivalent way to the revisions to the 1991 MYE for England and Wales as published by ONS in October 2002<sup>3</sup>.

The revisions for England and Wales are based on the assumption that the allowance for underenumeration in the 1991 Census was too high – by 342 thousand – and was concentrated in the ages 20-34 for males. Using the ONS results for England and Wales a set of revised grossing factors to take the 1991 Census population to the 1991 mid-year estimate was prepared and applied in each borough.

The impact of these revisions were mostly seen in Inner London, where all boroughs have had population reductions of at least 2 thousand, with 4,000 (or 2.1%) in Westminster and 3,900 in Lambeth and Wandsworth. The London total population is reduced by 64,400 (0.9%) to 6.826 million compared to the original estimate of 6.890 million. ONS expect to release their own revised borough populations for 1991 in February 2003 and have already indicated that the impact on London would be between 50 and 70 thousand<sup>4</sup>.

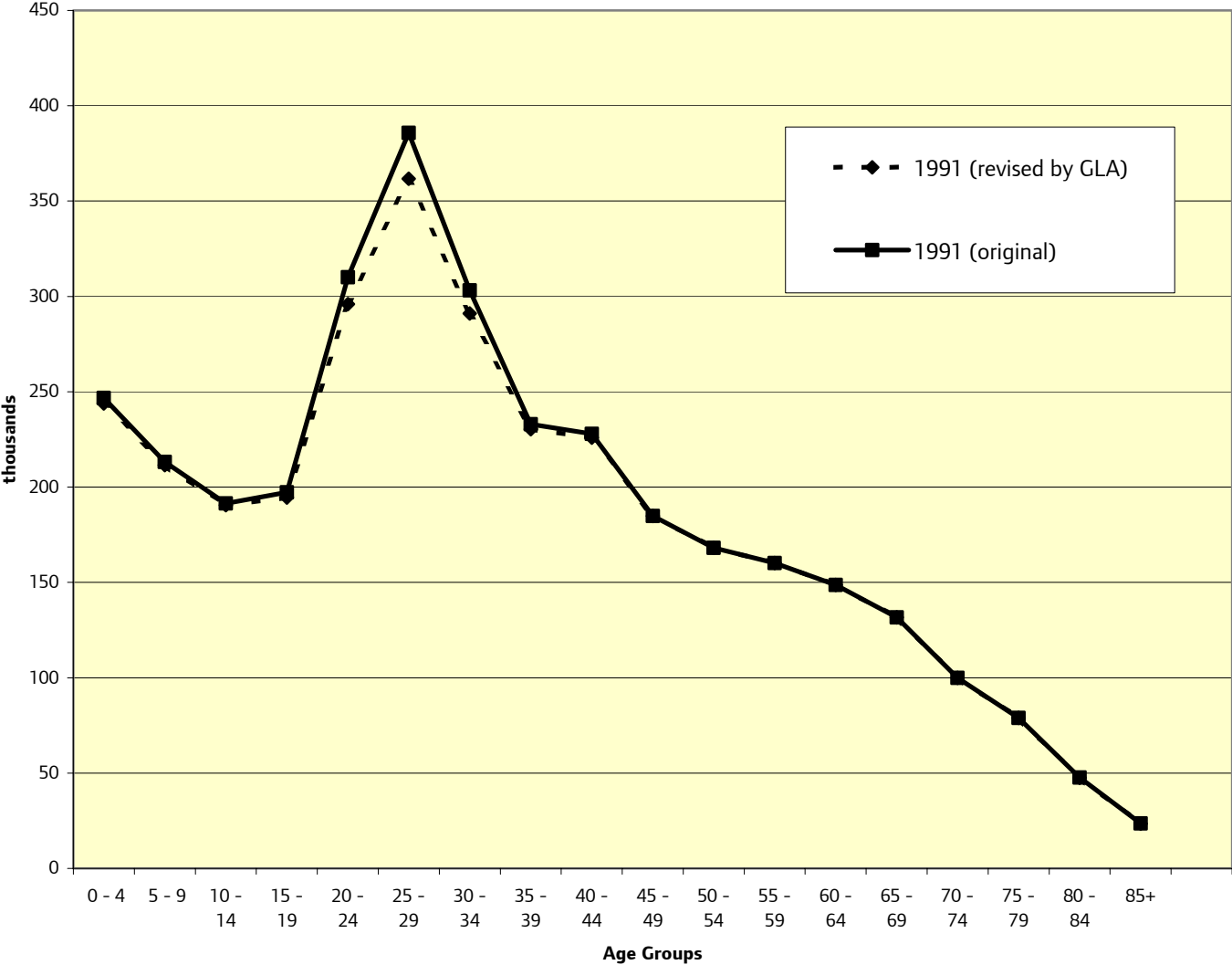
Chart 1 shows the impact of the changed population for London males by age in the final revision for the 1991 mid year estimates (made in 1996) compared with the GLA revisions to the 1991 figures inline with ONS revisions made for England & Wales. Table 1 shows the differences in the total population of each borough for the different 1991 estimates.

---

<sup>3</sup> Provisional revised 1991 estimates for England and Wales by age and gender were distributed by ONS when the 2001 estimates were published on 10 October.

<sup>4</sup> Roma Chappell addressing the GLA Demography Liaison Group on 17 October 2002.

**Chart 1: Greater London Age Structure: 1991 ONS MYE and 1991 GLA revision**



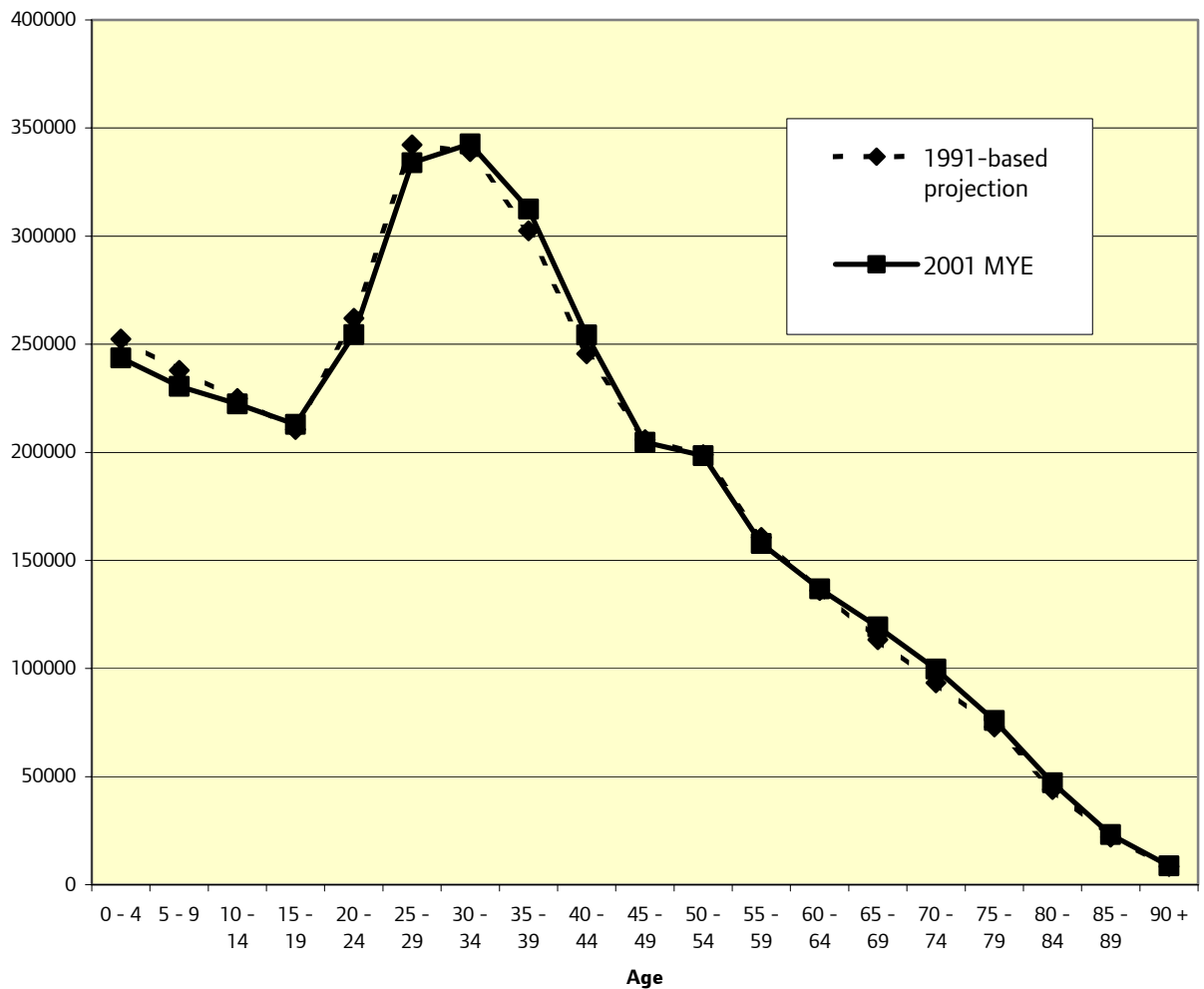
**Table 1: 1991 Population Estimates**

	<b>Census Usual Residents</b>	<b>MYE Original</b>	<b>MYE Revised</b>	<b>MYE Difference</b>
<b>England &amp; Wales</b>	49890277	51099521	50757600	-341921
<b>City of London</b>	4142	4124	4113	-11
<b>Camden</b>	170444	181707	178626	-3081
<b>Kensington &amp; Chelsea</b>	138394	145320	143327	-1993
<b>Westminster, City of</b>	174814	187713	183759	-3954
<b>Central boroughs</b>	487794	518864	509826	-9038
<b>Hackney</b>	181248	187879	185610	-2269
<b>Hammersmith &amp; Fulham</b>	148502	156200	153821	-2379
<b>Haringey</b>	202204	211756	208727	-3029
<b>Islington</b>	164686	173531	170850	-2681
<b>Lambeth</b>	244834	256589	252704	-3885
<b>Lewisham</b>	230983	240761	237695	-3066
<b>Newham</b>	212170	221268	218314	-2954
<b>Southwark</b>	218541	227194	224243	-2951
<b>Tower Hamlets</b>	161064	168095	165848	-2247
<b>Wandsworth</b>	252425	265259	261390	-3869
<b>Rest of Inner boroughs</b>	2016657	2108532	2079201	-29331
<b>Inner boroughs</b>	2504451	2627396	2589027	-38369
<b>Barking &amp; Dagenham</b>	143681	146166	145372	-794
<b>Barnet</b>	293564	299945	298127	-1818
<b>Bexley</b>	215615	219444	218339	-1105
<b>Brent</b>	243025	248605	246933	-1672
<b>Bromley</b>	290609	294710	293462	-1248
<b>Croydon</b>	313510	319189	317408	-1781
<b>Ealing</b>	275257	281794	279949	-1845
<b>Enfield</b>	257417	263156	261548	-1608
<b>Greenwich</b>	207650	213590	211877	-1713
<b>Harrow</b>	200100	203767	202560	-1207
<b>Havering</b>	229492	232508	231544	-964
<b>Hillingdon</b>	231602	236756	235044	-1712
<b>Hounslow</b>	204397	209061	207612	-1449
<b>Kingston upon Thames</b>	132996	137534	136236	-1298
<b>Merton</b>	168470	171832	170844	-988
<b>Redbridge</b>	226218	231216	229740	-1476
<b>Richmond upon Thames</b>	160732	164260	163388	-872
<b>Sutton</b>	168880	171358	170581	-777
<b>Waltham Forest</b>	212033	217664	215999	-1665
<b>Outer boroughs</b>	4175248	4262555	4236563	-25992
<b>Greater London</b>	6679699	6889951	6825590	-64361

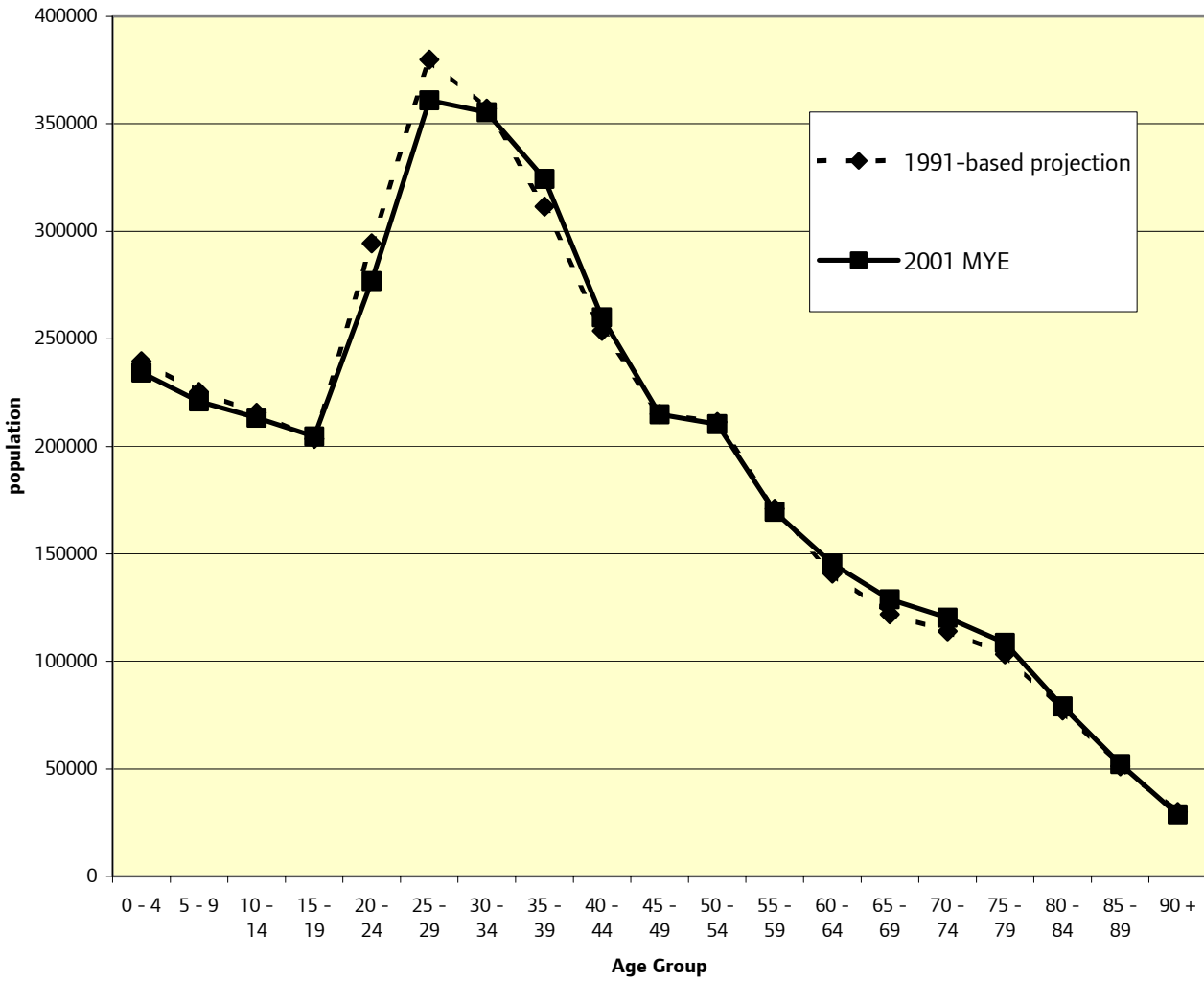
## 2001 Population

The model projects the population from 1991 up to 2001 when the ONS 2001 MYE is inserted into the model to replace the 'projected' version of the population in each borough. Charts 2 and 3 compare the 'projected' 2001 population with the 2001 mid-year estimates for London for males and females respectively by age group. It is clear that there is little age-structure difference between the two populations, showing that the projection model's use of 1991-based migration age structures has an insignificant bearing upon the results.

**Chart 2: Greater London, Male Population, 2001  
1991-based projection compared with 2001 MYE**



**Chart 3: Greater London Female Population, 2001  
1991-based projection compared with 2001 MYE**



## Migration 1991-2001

There is no data from the 2001 Census yet available on the structure of migration flows. ONS are currently undertaking a review that will look at international migration data closely and consider ways in which these data can be improved.

The model requires a migration matrix of total flows between the boroughs for 1991-92 together with flows to and from each borough and the Outer Metropolitan Area, the Outer South East, the rest of the UK and Overseas. It is also necessary to supply annual totals for all inflows from outside London and for overall net migration for as many years as are available. In this projection this means up to 2000-01.

The inter-borough matrix is based upon the 1991 Census data for change of usual residence between April 1990 and April 1991 together with data from the National Health Service Central Register for patients re-registering with a GP in another Health Area between mid-1991 and mid-1992. The more detailed Census geography is used to 'open out' the NHSCR data for London's 16 Health Areas to borough level.

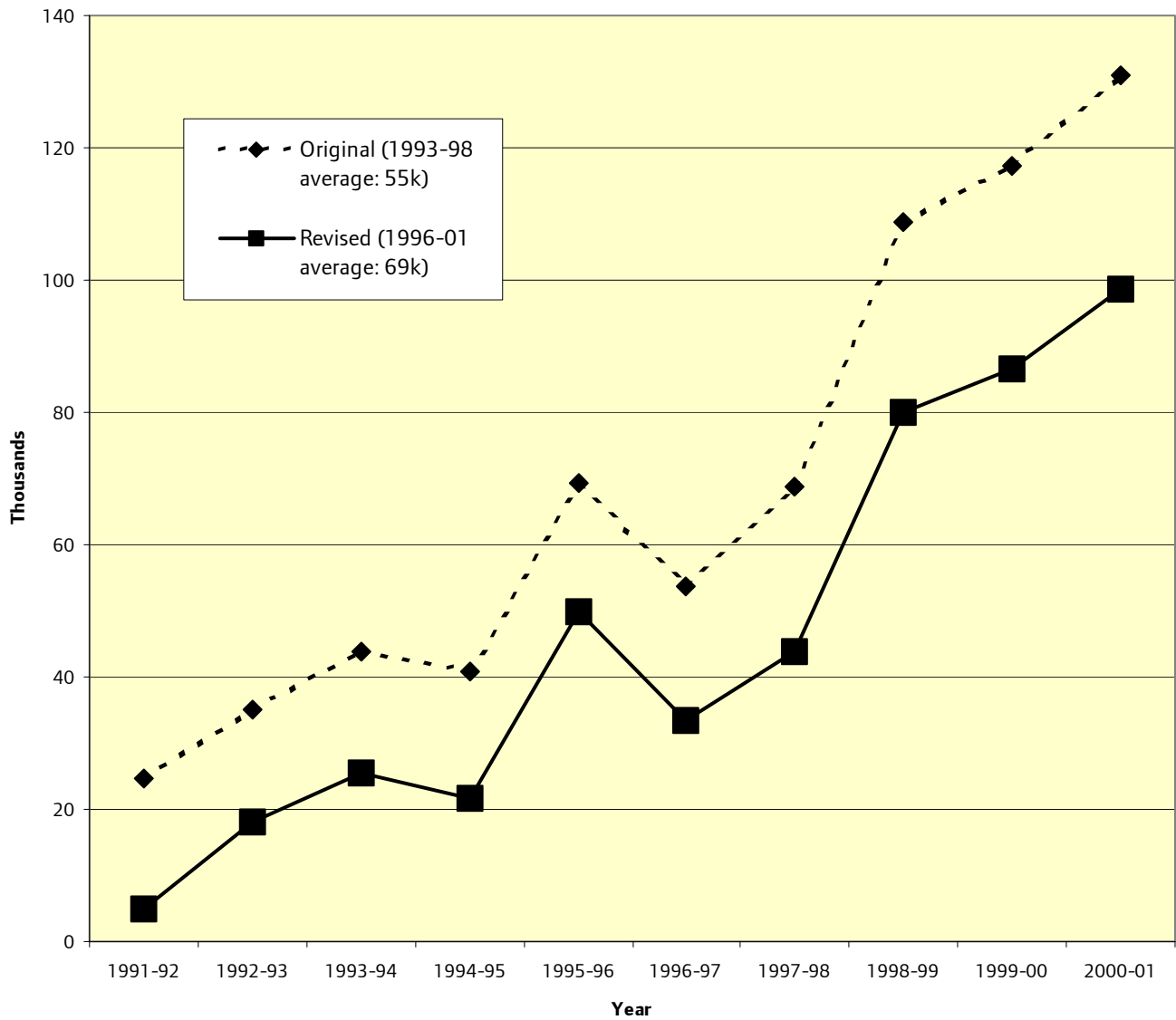
For all years flows to and from the rest of the UK are also based upon persons re-registering with GPs.

Flows to and from Overseas are based upon the International Passenger Survey, the Irish Labour Force Survey and Home Office asylum seeker and visitor switcher records. These data are provided annually by ONS as part of the changes in the mid-year estimates. However, it is these flows that were revealed by ONS to be faulty when the 2001 Census results were announced. Therefore the annual flows have been adjusted in order that in each borough the total change between the revised 1991 MYE and the 2001 MYE was correct. The adjustments follow ONS advice that they had (a) underestimated the international outflow and (b) had incorrectly assigned too many persons to parts of London. The actual corrections made were based upon inspecting the original net migration change in each borough and comparing it with the revised net migration. In 12 boroughs the net international migration had been underestimated. In these the annual inflows have been increased by the same percentage each year. In the remaining 21 boroughs the net international flow had been overestimated. In these cases the basic assumption was that half of the revision would be increasing the outflow and the other half reducing the inflow. This process was satisfactory in 17 boroughs, but in the remaining 4 the inflow was held constant, due to its original low level and all the adjustment was achieved by increasing the outflow.

The net effect of these adjustments for Greater London was that the official estimates of 1.424 million international immigrants and 731 thousand emigrants were revised to 1.340 million immigrants and 880 thousand emigrants. Thus the net international flow to London over the period 1991-2001 had to be reduced from 693 thousand to 460 thousand. Chart 4 shows the adjustment for net international migration to London compared to the original series. Table 2 shows the annual levels of International and UK migrant flows for London each year through the decade.

The annual overall net migration for each borough was also adjusted accordingly by assuming that the internal migration within then UK had been correctly estimated.

**Chart 4: Greater London International Migration: 1991-2001**



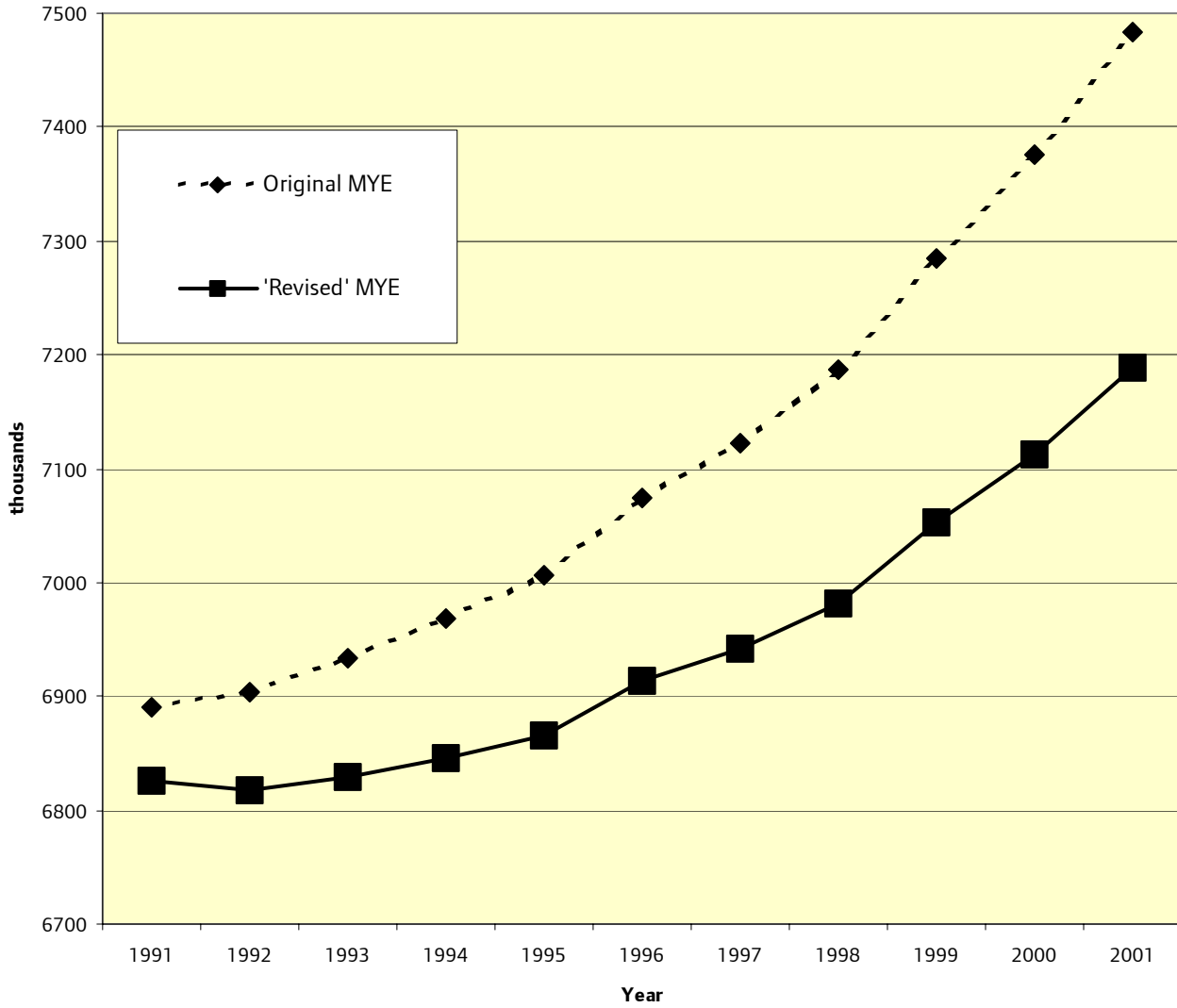
**Table 2: Greater London Migration 1991-2001: thousands**

	<b>International Migration (revised)</b>			<b>UK Migration</b>			<b>Total Net</b>
	<b>In</b>	<b>Out</b>	<b>Net</b>	<b>In</b>	<b>Out</b>	<b>Net</b>	
<b>1991-92</b>	95.2	91.3	3.9	153.9	208.2	-54.3	-50.4
<b>1992-93</b>	90.1	70.8	19.2	149.9	200.4	-50.5	-31.2
<b>1993-94</b>	100.5	74.2	26.3	152.7	203.4	-50.7	-24.5
<b>1994-95</b>	102.0	80.1	21.9	166.6	207.8	-41.2	-19.2
<b>1995-96</b>	119.8	69.8	50.0	168.8	208.9	-40.1	9.9
<b>1996-97</b>	111.3	79.6	31.7	168.5	217.7	-49.2	-17.5
<b>1997-98</b>	139.0	97.1	41.9	169.5	221.5	-52.0	-10.0
<b>1998-99</b>	180.9	101.3	79.6	167.6	220.1	-52.5	27.1
<b>1999-00</b>	193.1	106.4	86.7	163.3	233.2	-69.9	16.8
<b>2000-01</b>	208.6	109.5	99.1	163.6	232.2	-68.6	30.5
<b>Annual Average 1996-01</b>	166.6	98.8	67.8	166.5	224.9	-58.4	9.4

For all migrant flows into London the 1991 Census age structure of each flow was used. For all migrant flows that start in a London borough the 1991 Census age and gender specific probabilities were used throughout the projection.

Chart 5 shows the resulting annual change in London's population from 1991 to 2001 under the original and the revised sequences of estimates

**Chart 5: Greater London Population: 1991-2001**

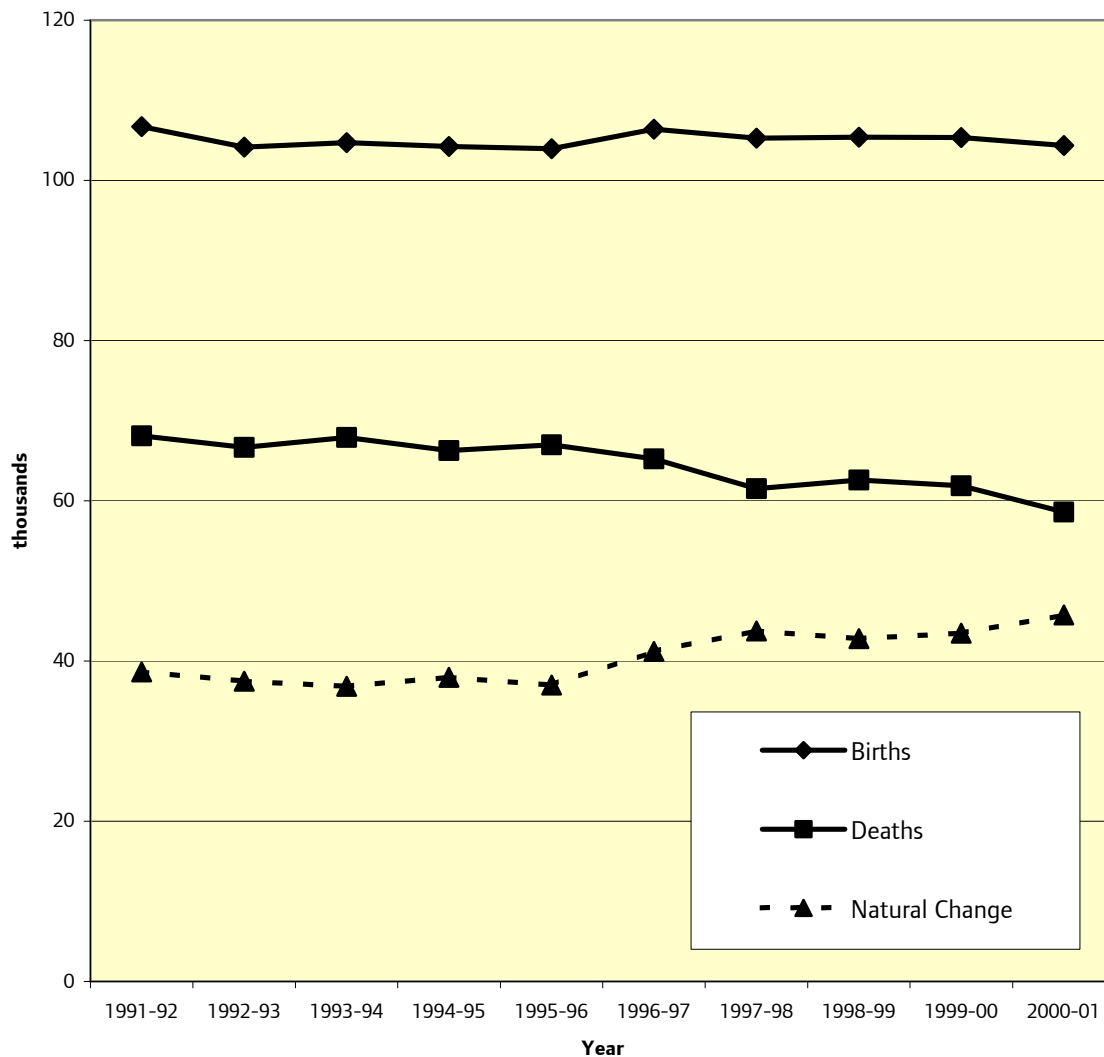


## Fertility and Mortality 1991-2001

The model requires total numbers of actual births and deaths for each borough in each year (1 July to 30 June) for which they are known, ie up to 2000-01. It also requires age specific fertility rates by age of mother for each borough and age/gender specific survival rates for each of the three borough groups (central, rest of inner and outer). The fertility and survival rates are based upon actual numbers of births (by age of mother) and deaths (by age and gender) over the three calendar years 1995-97 and the original 1996 MYE.

Chart 6 shows the annual births, deaths and natural change for London from 1991-2001

**Chart 6: Greater London Natural Change: 1991-2001**



## Fertility and Mortality after 2001

The trend in fertility rates after 2001 follows the assumed trend in the total period fertility rate for England and Wales used in the Government Actuary's (GAD) 2001-based projection<sup>5</sup>.

Age specific mortality rates (1 – survival rate) are improved after 2001 following the average trend used in the GAD 2001-based projection for England and Wales between 2001-02 and 2040-41. This is generally referred to as the 'forty year improvement factor'.

Fertility rates for England and Wales are assumed to rise, from a total period fertility rate (TPFR) of 1.634 in 2001-02 to 1.749 in 2015-16. Applying this change to the female population of London shows an increase from 103.1 thousand births in 2001-02 to 119.1 thousand in 2015-16. The increase in births is about 15% compared to an increase in the TPFR of about 7%, reflecting the growing population of women in the main fertile ages in London.

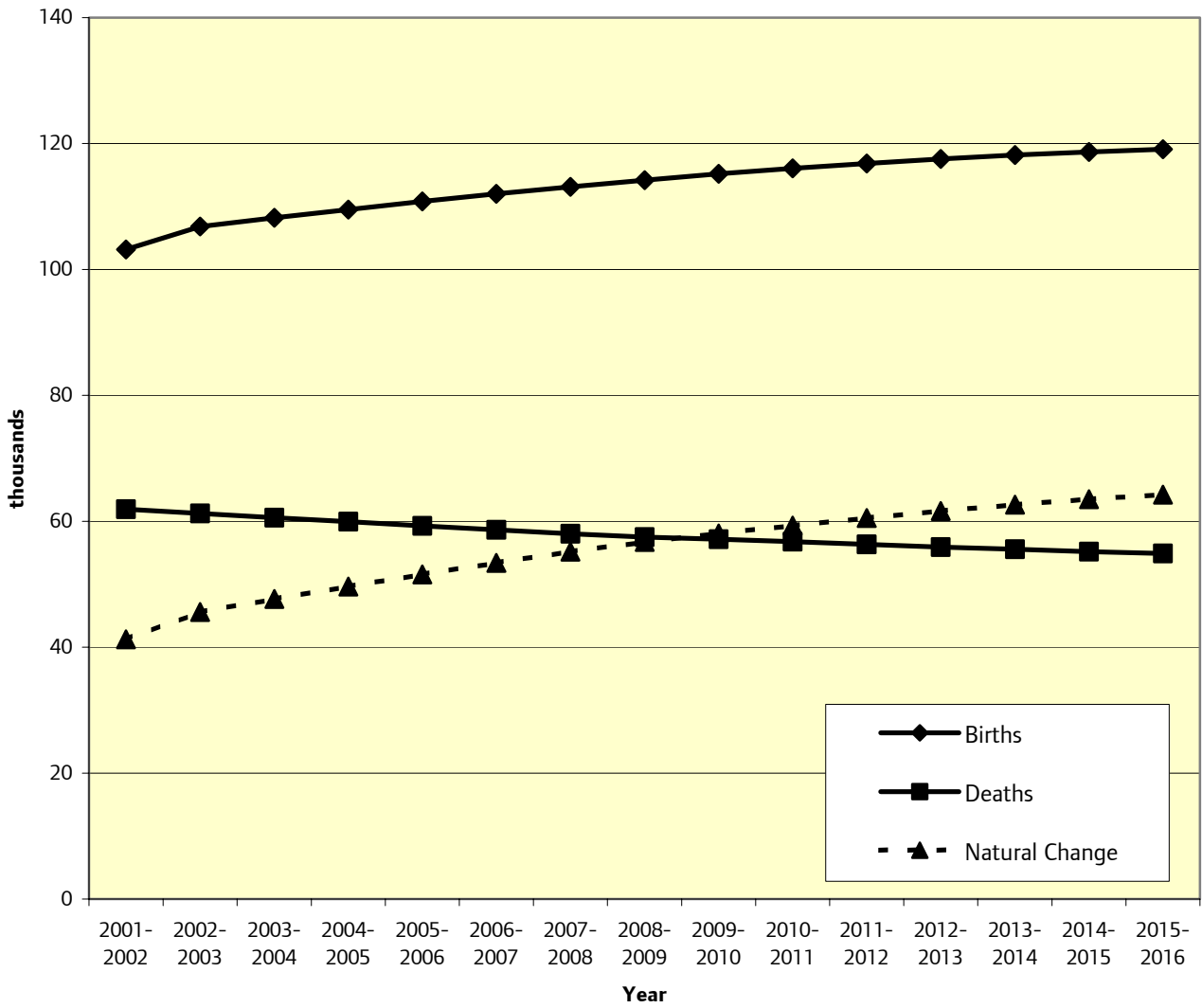
The GAD assumptions for survival imply that the expectation of life for males rises from 76.1 years to 78.3 years and for females from 80.7 years to 82.4 years over the projection period. The impact of improved mortality in London, taken together with the changing London population of the elderly means that deaths are projected to decline in London from 61.9 thousand in 2001-02 to 54.9 thousand in 2015-16.

Chart 7 shows the projected natural change in the central projection, there is little difference in the two variants

---

<sup>5</sup> Interim 2001-based national population projections for the United Kingdom, Government Actuary, November 2002.

**Chart 7: Greater London Natural Change: 2001-16 (Central Projection)**



## Variant Projections

Three variant projections have been prepared based upon different assumptions about migration after 2001. The preparation of variants follows from the comments made by central government about the need for sensitivity analysis in the forecasts used in the *draft London Plan*.

### **Central**      *-Migration 2001-02*

For each borough the average annual migration levels (inflows, outflows and net flows) as described above for the years 1996-2001 have been used.

### *-Migration after 2002*

Annual inflows from outside London remain constant at the levels as used in 2001-02. Annual outflows vary based upon using the age-specific probabilities of leaving each borough that the model developed to meet the specified outflows in 2001-02 and the changing size and age/gender structure of the population of each borough.

***The Central Projection is equivalent to GLA 2000 Round Projection P2 that became adopted as the basis for the borough level forecasts in the draft London Plan. The differences are that it is based upon the new 2001 mid-year estimate rather than the original 1998 estimate and that it uses revised migration based upon 1996-2001 rather than the original migration for 1993-98.***

### **Low**

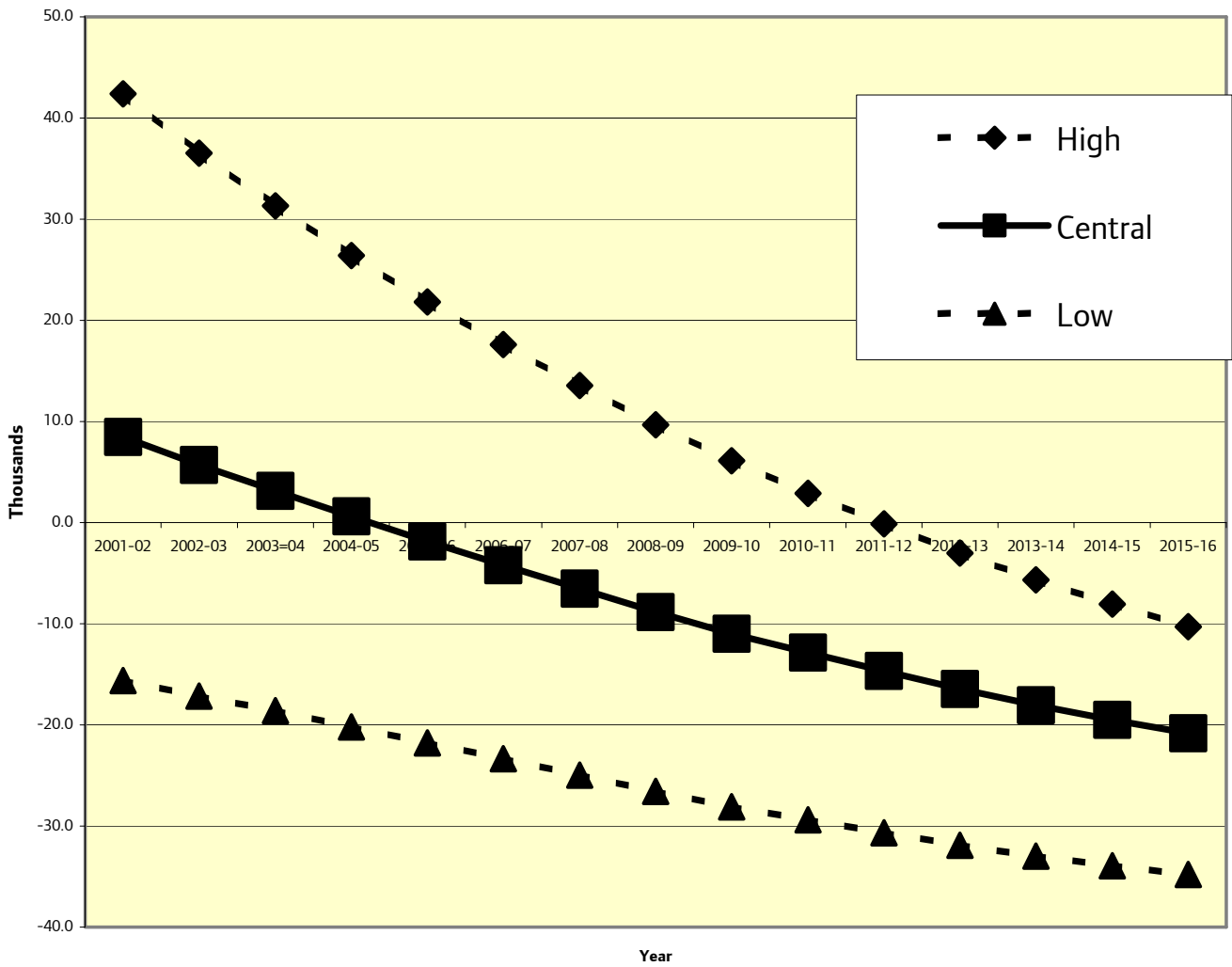
The **Low** Projection is the same as the Central but in 2001-02 migration is based upon the average international flows of 1996-2001 together with UK flows calculated as the average of 2000-01 and the year between 1996 and 2001 with the 'lowest' net UK flow. In most boroughs this is simply 2000-01 but in a few cases this would have led to a higher overall net migration in 2001-02 than the Central Projection.

### **High**

The **High** projection is the same as the Central but in 2001-02 migration is based upon the average UK flows of 1996-2001 together with international flows calculated as the average of 2000-01 and the year between 1996 and 2001 with the 'highest' net international flow. In most boroughs this is simply 2000-01 but in a few cases this would have led to a lower overall net migration in 2001-02 than the Central Projection.

Chart 8 shows the three variant migration projections for Greater London.

**Chart 8: Greater London Variant Net Migration: 2001-16**



## Households

A household projection has been prepared for every fifth year from 1991 to 2016. In most respects the projection follows the process and the projected marital status rates, prepared by the GAD, and household representative rates as used in the DETR 1996-based household projections. Within each fifteen-year age group and by gender the population is divided into married and non-married persons. These populations are then further divided into the private household population and the communal establishment population. The private household population is then used as the basis for projecting households by type using a set of household representative rates. All marital status and household representative rates used are consistent with those found in the DETR projection, but the marital status is truncated to married and non-married rather than married, divorced, widowed and single, and the representative rates are used in fifteen-year age bands rather than five-year bands. Experiment shows that the impact of truncation on the projection for Greater London is minimal.

No account has been taken in these projections of the potential impact of the revised 1991 population age structure. The realisation that the 1991 population should have had many fewer young adult males – most presumed to be single – will increase the 1991 proportions of persons who were married. This in turn would impact upon the marital status projection by raising the number of married persons. This is likely to impact upon the household projection by reducing the growth in households and raising the average household size above the original projection.

## **Economic Activity**

An economically active projection has been prepared for each projection year from 1991 to 2016. At this stage we have no 2001 Census data on economic activity for adult males and females

The economically active population projection model is a straightforward process reliant upon three inputs, the total projected population as output from the borough population model, a set of borough-specific economic activity rates by age and gender which are derived from the 1991 Census, and the latest projected trends in economic activity rates by age and gender. The latter are derived from ONS's latest projection of the national labour force.<sup>6</sup>

Projected borough level economic activity rates are applied annually to the projected population in the appropriate gender/age group to produce a projection of the economically active population.

---

<sup>6</sup> Labour Market Trends, June 1998

## Projection Results

Tables 3 and 4 show the total projected populations and households in each borough for 2001 and for the three variant projections at 2016. Chart 9 shows the projected population trends for Greater London for each year from 1991 to 2016.

The Central projection shows a growth of 711 thousand persons and 417 thousand households over the fifteen-year projection period. The range of growth between the Low and High variants is 413 thousand to 1.099 million persons and 285 to 570 thousand households. The Central projection is for both population and household change a little below the centre of the range.

The population growth projected for the Central projection (711 thousand) is very close to that originally projected for the same period and used in the *draft London Plan* (738 thousand). In terms of households the new Central shows a growth of 417 thousand compared to 467 thousand in the original *London Plan* projection.

In the Central projection only three boroughs – Bexley, Harrow and Havering – are projected to have reduced populations in 2016 and only Havering and Richmond upon Thames are projected to show a reduction in households.

Table 5 shows the Central projection for Greater London by age and gender. Chart 10 compares the age structure of London at 2001 and 2016.

Looking solely at the Central projection Greater London is expected to have increase in population at all ages except 35-39 and 70-89. The small reductions at 35-39 are due to the survivors of the huge birth cohorts of 1961-66 being replaced in this age group by the survivors from the much smaller birth cohorts of 1976-81. The reductions at older ages are mainly the impact of migration away from London. The main ages at which London gains population are 0-4, 20-29 and 45-59. While the rise in infants is a consequence of assumed increased fertility rates and a growing population in the main childbearing ages the growth at other ages is a combination of replacement of small birth cohorts by larger ones and the impact of increased net migration of young persons to London.

Table 6 shows the projected households in London by type from the Central projection. There are two significant patterns for the period 2001-16, the virtual one-for-one replacement of married couples by cohabiting couples and the growth of non-couple households, particularly one person households (255 thousand). Average household size declined from 2.395 in 1991 to 2.319 in 2001 and is projected to further decline to 2.244 in 2016.

It must be recalled that these projections have not used any new information on households from the 2001 Census nor have any corrections to marital status rates and household representative rates been made as a consequence of the reduced population of young single males in 1991. However, the resulting average household sizes for all years from 1991 onwards in this projection are slightly higher than in the GLA 2000 Round projections that informed the *draft London Plan* purely as a consequence of the revised age and gender structure of the population.

Table 7, Economic activity by age and gender shows the increases an increase of female economic activity over the period 2001 to 2016 where as males economic activity is projected to decline slightly.

Table 3: Population Projections to 2016 for the three Variants

	2001 MYE	2016			2001-16 Change		
		Low	Central	High	Low	Central	High
<b>Camden</b>	<b>198432</b>	232229	<b>234962</b>	262935	33797	<b>36530</b>	64503
<b>Kensington &amp; Chelsea</b>	<b>159147</b>	176843	<b>178893</b>	194985	17696	<b>19746</b>	35838
<b>Westminster, City of</b>	<b>181691</b>	198589	<b>201521</b>	213649	16898	<b>19830</b>	31958
<b>City of London</b>	<b>7216</b>	9534	<b>10903</b>	11678	2318	<b>3687</b>	4462
<b>Central boroughs</b>	<b>546486</b>	617195	<b>626279</b>	683246	70709	<b>79793</b>	136760
<b>Hackney</b>	<b>203352</b>	223426	<b>239401</b>	259772	20074	<b>36049</b>	56420
<b>Hammersmith &amp; Fulham</b>	<b>165476</b>	192089	<b>195457</b>	211191	26613	<b>29981</b>	45715
<b>Haringey</b>	<b>216809</b>	221703	<b>237539</b>	249716	4894	<b>20730</b>	32907
<b>Islington</b>	<b>176103</b>	185662	<b>191504</b>	204403	9559	<b>15401</b>	28300
<b>Lambeth</b>	<b>266791</b>	297135	<b>304379</b>	318979	30344	<b>37588</b>	52188
<b>Lewisham</b>	<b>249451</b>	263268	<b>273339</b>	281217	13817	<b>23888</b>	31766
<b>Newham</b>	<b>244291</b>	271544	<b>287717</b>	309041	27253	<b>43426</b>	64750
<b>Southwark</b>	<b>245416</b>	279248	<b>289725</b>	306277	33832	<b>44309</b>	60861
<b>Tower Hamlets</b>	<b>196630</b>	244522	<b>253850</b>	262811	47892	<b>57220</b>	66181
<b>Wandsworth</b>	<b>260847</b>	290716	<b>294275</b>	313955	29869	<b>33428</b>	53108
<b>Rest of Inner boroughs</b>	<b>2225166</b>	2469313	<b>2567187</b>	2717361	244147	<b>342021</b>	492195
<b>Inner boroughs</b>	<b>2771652</b>	3086508	<b>3193466</b>	3400608	314856	<b>421814</b>	628956
<b>Barking &amp; Dagenham</b>	<b>164346</b>	185203	<b>191951</b>	205519	20857	<b>27605</b>	41173
<b>Barnet</b>	<b>315267</b>	313485	<b>336605</b>	344686	-1782	<b>21338</b>	29419
<b>Bexley</b>	<b>218756</b>	204365	<b>217423</b>	223204	-14391	<b>-1333</b>	4448
<b>Brent</b>	<b>263805</b>	289204	<b>307883</b>	336654	25399	<b>44078</b>	72849
<b>Bromley</b>	<b>296155</b>	283024	<b>300658</b>	305738	-13131	<b>4503</b>	9583
<b>Croydon</b>	<b>331530</b>	324143	<b>337530</b>	353743	-7387	<b>6000</b>	22213
<b>Ealing</b>	<b>301553</b>	316068	<b>333592</b>	346920	14515	<b>32039</b>	45367
<b>Enfield</b>	<b>274343</b>	294449	<b>302715</b>	308612	20106	<b>28372</b>	34269
<b>Greenwich</b>	<b>215238</b>	234844	<b>242501</b>	255139	19606	<b>27263</b>	39901
<b>Harrow</b>	<b>207988</b>	201471	<b>207718</b>	216537	-6517	<b>-270</b>	8549
<b>Havering</b>	<b>224720</b>	207509	<b>211811</b>	216822	-17211	<b>-12909</b>	-7898
<b>Hillingdon</b>	<b>243052</b>	242585	<b>247077</b>	258335	-467	<b>4025</b>	15283
<b>Hounslow</b>	<b>212668</b>	219059	<b>233351</b>	239232	6391	<b>20683</b>	26564
<b>Kingston upon Thames</b>	<b>147625</b>	158864	<b>163612</b>	166046	11239	<b>15987</b>	18421
<b>Merton</b>	<b>188348</b>	208622	<b>214047</b>	228503	20274	<b>25699</b>	40155
<b>Redbridge</b>	<b>239329</b>	245469	<b>258607</b>	267049	6140	<b>19278</b>	27720
<b>Richmond upon Thames</b>	<b>172808</b>	170277	<b>175235</b>	178322	-2531	<b>2427</b>	5514
<b>Sutton</b>	<b>180174</b>	184746	<b>189067</b>	192729	4572	<b>8893</b>	12555
<b>Waltham Forest</b>	<b>218649</b>	230873	<b>234214</b>	242748	12224	<b>15565</b>	24099
<b>Outer boroughs</b>	<b>4416354</b>	4514260	<b>4705597</b>	4886537	97906	<b>289243</b>	470183
<b>Greater London</b>	<b>7188006</b>	7600767	<b>7899063</b>	8287145	412761	<b>711057</b>	1099139

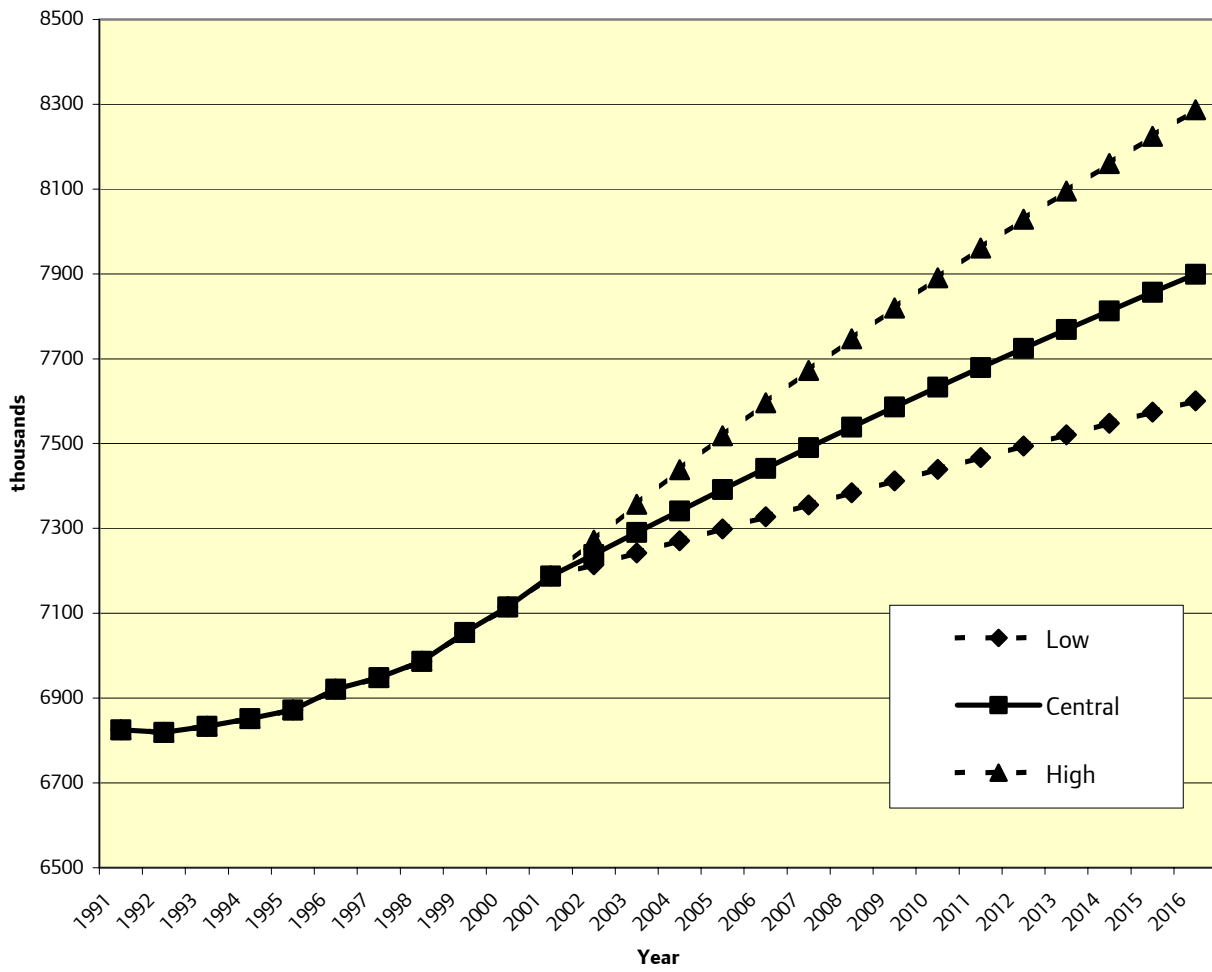
Shaded figures show projected population decline

Table 4: Household Projections to 2016 for the three Variants

	2001	2016			2001-16 Change		
		Low	Central	High	Low	Central	High
Camden	91669	114057	<b>115447</b>	128570	22388	<b>23778</b>	36901
Kensington & Chelsea	82191	92338	<b>93413</b>	101398	10147	<b>11222</b>	19207
Westminster, City of	88886	96812	<b>98241</b>	103660	7926	<b>9355</b>	14774
City of London	3644	4818	<b>5536</b>	5886	1174	<b>1892</b>	2242
<b>Central boroughs</b>	<b>266390</b>	<b>308025</b>	<b>312637</b>	<b>339514</b>	<b>41635</b>	<b>46247</b>	<b>73124</b>
Hackney	87973	98757	<b>105960</b>	114435	10784	<b>17987</b>	26462
Hammersmith & Fulham	79503	91904	<b>93549</b>	100605	12401	<b>14046</b>	21102
Haringey	94032	98419	<b>105616</b>	110566	4387	<b>11584</b>	16534
Islington	81039	86099	<b>89000</b>	94510	5060	<b>7961</b>	13471
Lambeth	124411	139866	<b>143535</b>	149730	15455	<b>19124</b>	25319
Lewisham	109481	119532	<b>124418</b>	127313	10051	<b>14937</b>	17832
Newham	90994	107392	<b>114016</b>	121985	16398	<b>23022</b>	30991
Southwark	111258	128665	<b>133768</b>	140475	17407	<b>22510</b>	29217
Tower Hamlets	79415	105806	<b>110120</b>	114054	26391	<b>30705</b>	34639
Wandsworth	114815	128072	<b>129764</b>	137956	13257	<b>14949</b>	23141
<b>Rest of Inner boroughs</b>	<b>972921</b>	<b>1104512</b>	<b>1149746</b>	<b>1211629</b>	<b>131591</b>	<b>176825</b>	<b>238708</b>
<b>Inner boroughs</b>	<b>1239311</b>	<b>1412537</b>	<b>1462383</b>	<b>1551143</b>	<b>173226</b>	<b>223072</b>	<b>311832</b>
Barking & Dagenham	64243	75310	<b>77952</b>	82694	11067	<b>13709</b>	18451
Barnet	126915	131230	<b>140997</b>	143551	4315	<b>14082</b>	16636
Bexley	90048	88568	<b>94282</b>	96245	-1480	<b>4234</b>	6197
Brent	107884	122050	<b>129928</b>	140704	14166	<b>22044</b>	32820
Bromley	126051	124336	<b>132058</b>	134152	-1715	<b>6007</b>	8101
Croydon	136171	141399	<b>147074</b>	152943	5228	<b>10903</b>	16772
Ealing	125321	134256	<b>141744</b>	146277	8935	<b>16423</b>	20956
Enfield	110626	123668	<b>127176</b>	128949	13042	<b>16550</b>	18323
Greenwich	90300	102759	<b>106168</b>	110993	12459	<b>15868</b>	20693
Harrow	82096	82849	<b>85487</b>	88356	753	<b>3391</b>	6260
Havering	91963	89617	<b>91502</b>	93171	-2346	<b>-461</b>	1208
Hillingdon	98008	102803	<b>104731</b>	108742	4795	<b>6723</b>	10734
Hounslow	86165	91958	<b>97958</b>	99785	5793	<b>11793</b>	13620
Kingston upon Thames	61719	68817	<b>70933</b>	71725	7098	<b>9214</b>	10006
Merton	79297	89820	<b>92184</b>	97541	10523	<b>12887</b>	18244
Redbridge	94974	102200	<b>107637</b>	111010	7226	<b>12663</b>	16036
Richmond upon Thames	77686	75363	<b>77624</b>	78698	-2323	<b>-62</b>	1012
Sutton	76073	82349	<b>84310</b>	85459	6276	<b>8237</b>	9386
Waltham Forest	91591	99425	<b>100834</b>	104154	7834	<b>9243</b>	12563
<b>Outer boroughs</b>	<b>1817131</b>	<b>1928777</b>	<b>2010579</b>	<b>2075149</b>	<b>111646</b>	<b>193448</b>	<b>258018</b>
<b>Greater London</b>	<b>3056442</b>	<b>3341314</b>	<b>3472962</b>	<b>3626292</b>	<b>284872</b>	<b>416520</b>	<b>569850</b>

Shaded figures show projected household decline

Chart 9: Greater London Population: 1991-2016

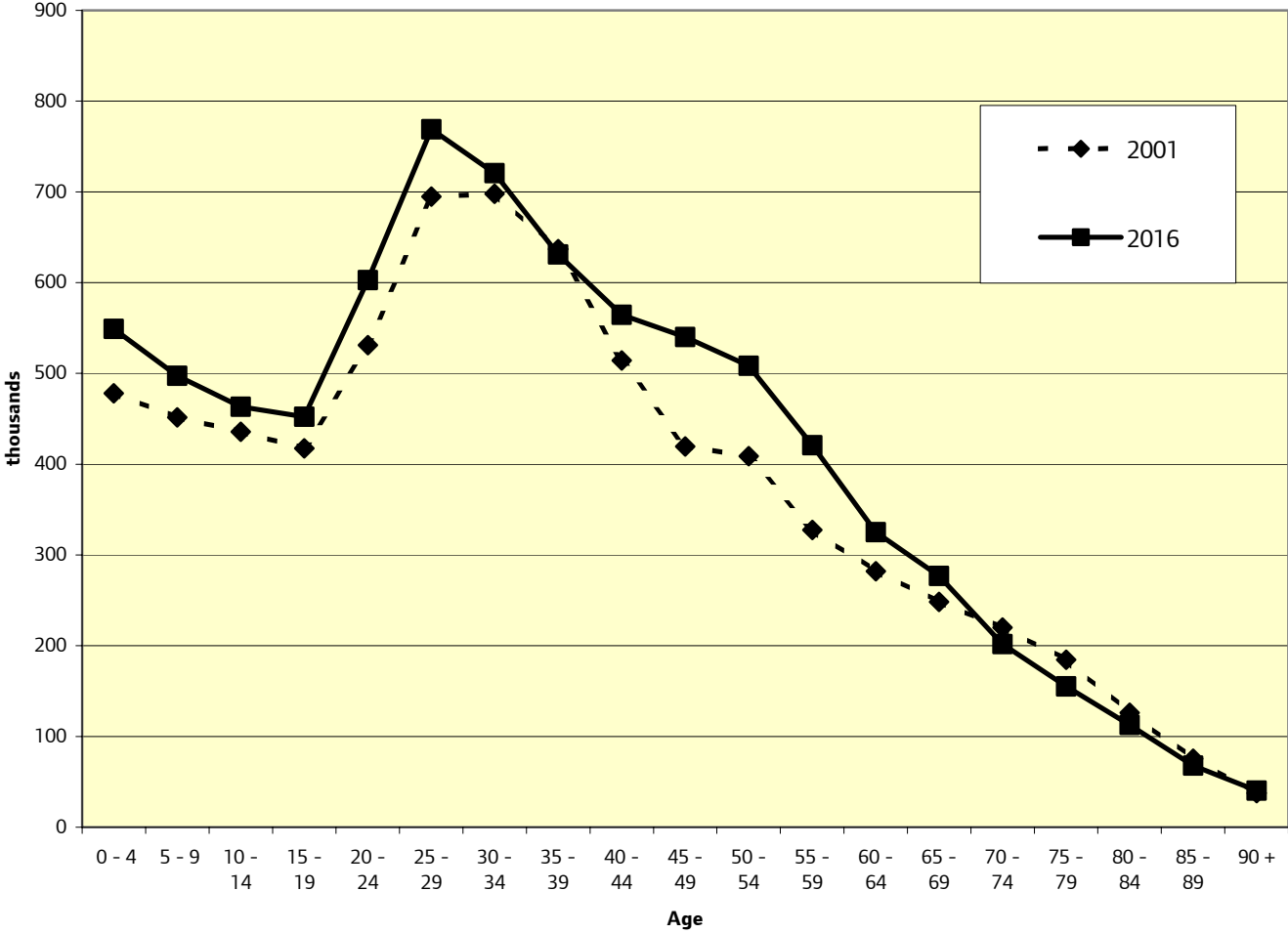


**Table 5 Greater London Central Population Projection**

<b>2001 Age</b>	<b>Males</b>	<b>Females</b>	<b>Persons</b>	<b>2006 Age</b>	<b>Males</b>	<b>Females</b>	<b>Persons</b>
<b>0 - 4</b>	243728	234314	478042	<b>0 - 4</b>	257975	244978	502953
<b>5 - 9</b>	230586	220861	451447	<b>5 - 9</b>	231913	222181	454094
<b>10 - 14</b>	222338	213359	435697	<b>10 - 14</b>	226703	216896	443599
<b>15 - 19</b>	212895	204634	417529	<b>15 - 19</b>	225600	218292	443892
<b>20 - 24</b>	254473	276863	531336	<b>20 - 24</b>	275508	304866	580375
<b>25 - 29</b>	333933	360831	694764	<b>25 - 29</b>	345481	384332	729813
<b>30 - 34</b>	342621	355341	697962	<b>30 - 34</b>	331911	347510	679421
<b>35 - 39</b>	312536	324297	636833	<b>35 - 39</b>	307616	319257	626873
<b>40 - 44</b>	254373	260013	514386	<b>40 - 44</b>	283018	299611	582629
<b>45 - 49</b>	204717	214901	419618	<b>45 - 49</b>	238478	249720	488199
<b>50 - 54</b>	198493	210374	408867	<b>50 - 54</b>	193140	205069	398209
<b>55 - 59</b>	157880	169582	327462	<b>55 - 59</b>	182510	194379	376889
<b>60 - 64</b>	136783	145350	282133	<b>60 - 64</b>	139087	149816	288902
<b>65 - 69</b>	119226	128895	248121	<b>65 - 69</b>	111108	125189	236297
<b>70 - 74</b>	99790	120229	220019	<b>70 - 74</b>	93149	110009	203158
<b>75 - 79</b>	75961	108605	184566	<b>75 - 79</b>	73085	97622	170707
<b>80 - 84</b>	47157	79004	126161	<b>80 - 84</b>	47318	78533	125851
<b>85 - 89</b>	23262	52259	75521	<b>85 - 89</b>	23043	46935	69978
<b>90 +</b>	8708	28834	37542	<b>90 +</b>	9594	30108	39702
<b>Total</b>	<b>3479460</b>	<b>3708546</b>	<b>7188006</b>	<b>Total</b>	<b>3596235</b>	<b>3845303</b>	<b>7441538</b>

<b>2011 Age</b>	<b>Males</b>	<b>Females</b>	<b>Persons</b>	<b>2016 Age</b>	<b>Males</b>	<b>Females</b>	<b>Persons</b>
<b>0 - 4</b>	272525	258812	531337	<b>0 - 4</b>	281590	267433	549022
<b>5 - 9</b>	243511	230739	474250	<b>5 - 9</b>	255385	242020	497405
<b>10 - 14</b>	227696	217873	445569	<b>10 - 14</b>	237880	225285	463166
<b>15 - 19</b>	229258	221304	450562	<b>15 - 19</b>	230048	222084	452132
<b>20 - 24</b>	284983	314389	599372	<b>20 - 24</b>	287038	315895	602934
<b>25 - 29</b>	357807	399813	757620	<b>25 - 29</b>	363604	405324	768928
<b>30 - 34</b>	339708	362832	702540	<b>30 - 34</b>	347718	373053	720771
<b>35 - 39</b>	300123	313360	613483	<b>35 - 39</b>	306039	324929	630968
<b>40 - 44</b>	279442	295769	575211	<b>40 - 44</b>	273655	290865	564520
<b>45 - 49</b>	262158	284102	546259	<b>45 - 49</b>	259373	280927	540299
<b>50 - 54</b>	221943	235831	457774	<b>50 - 54</b>	242317	266217	508534
<b>55 - 59</b>	178353	190275	368627	<b>55 - 59</b>	203445	217546	420991
<b>60 - 64</b>	159701	170806	330506	<b>60 - 64</b>	156914	167964	324878
<b>65 - 69</b>	113518	129174	242693	<b>65 - 69</b>	130050	146877	276927
<b>70 - 74</b>	87727	107488	195215	<b>70 - 74</b>	90293	111281	201574
<b>75 - 79</b>	69245	90315	159560	<b>75 - 79</b>	66094	88948	155042
<b>80 - 84</b>	46659	71907	118566	<b>80 - 84</b>	45126	67511	112638
<b>85 - 89</b>	23489	47014	70503	<b>85 - 89</b>	23926	44089	68015
<b>90 +</b>	10259	29441	39700	<b>90 +</b>	10794	29526	40320
<b>Total</b>	<b>3708104</b>	<b>3971244</b>	<b>7679348</b>	<b>Total</b>	<b>3811289</b>	<b>4087775</b>	<b>7899063</b>

**Chart 10: Greater London Age Structure: 2001 and 2016 (Central Projection)**



**Table 6: 2002 Round Population Projections, High, Low, Central Variants**

	Low				Central				High			
	All Resident Population				All Resident Population				All Resident Population			
	2001	2006	2011	2016	2001	2006	2011	2016	2001	2006	2011	2016
Camden	198,432	212,717	223,671	232,229	198,432	213,361	225,356	234,962	198,432	226,847	247,348	262,935
Kensington & Chelsea	159,147	169,187	173,765	176,843	159,147	170,079	175,301	178,893	159,147	179,041	188,669	194,985
Westminster, City of	181,691	188,956	194,513	198,589	181,691	190,238	196,703	201,521	181,691	196,767	206,665	213,649
City of London	7,216	8,221	8,961	9,534	7,216	8,751	9,942	10,903	7,216	9,065	10,508	11,678
Central Boroughs	546,486	579,081	600,910	617,195	546,486	582,430	607,302	626,279	546,486	611,719	653,190	683,246
Hackney	203,352	210,695	217,346	223,426	203,352	216,894	228,812	239,401	203,352	225,050	243,608	259,772
Hammersmith & Fulham	165,476	176,238	185,115	192,089	165,476	177,563	187,537	195,457	165,476	184,844	199,705	211,191
Haringey	216,809	217,101	219,036	221,703	216,809	223,994	230,932	237,539	216,809	228,841	239,788	249,716
Islington	176,103	178,661	182,150	185,662	176,103	180,914	186,331	191,504	176,103	186,409	195,974	204,403
Lambeth	266,791	276,547	287,237	297,135	266,791	279,203	292,298	304,379	266,791	285,074	302,978	318,979
Lewisham	249,451	253,615	258,338	263,268	249,451	257,333	265,418	273,339	249,451	260,268	270,997	281,217
Newham	244,291	254,396	263,313	271,544	244,291	260,381	274,730	287,717	244,291	268,625	290,022	309,041
Southwark	245,416	257,132	268,702	279,248	245,416	261,019	276,051	289,725	245,416	267,750	288,195	306,277
Tower Hamlets	196,630	213,677	229,744	244,522	196,630	216,816	236,018	253,850	196,630	219,505	241,827	262,811
Wandsworth	260,847	269,329	280,626	290,716	260,847	270,408	282,945	294,275	260,847	278,590	297,515	313,955
Rest of Inner Boroughs	2,225,166	2,307,391	2,391,607	2,469,313	2,225,166	2,344,526	2,461,072	2,567,187	2,225,166	2,404,955	2,570,610	2,717,361
Inner Boroughs	2,771,652	2,886,472	2,992,518	3,086,508	2,771,652	2,926,955	3,068,375	3,193,466	2,771,652	3,016,674	3,223,800	3,400,608
Barking & Dagenham	164,346	171,234	178,313	185,203	164,346	173,362	182,714	191,951	164,346	177,995	191,902	205,519
Barnet	315,267	313,367	312,914	313,485	315,267	323,277	330,218	336,605	315,267	325,955	335,684	344,686
Bexley	218,756	212,717	207,941	204,365	218,756	217,675	217,231	217,423	218,756	219,502	221,035	223,204
Brent	263,805	272,625	281,440	289,204	263,805	280,271	295,099	307,883	263,805	292,311	316,422	336,654
Bromley	296,155	290,841	286,241	283,024	296,155	297,659	298,881	300,658	296,155	298,974	302,002	305,738
Croydon	331,530	328,017	325,574	324,143	331,530	333,263	335,200	337,530	331,530	339,364	346,663	353,743
Ealing	301,553	305,622	310,894	316,068	301,553	312,960	323,848	333,592	301,553	318,312	333,580	346,920
Enfield	274,343	281,716	288,384	294,449	274,343	284,301	293,827	302,715	274,343	286,043	297,633	308,612
Greenwich	215,238	221,765	228,431	234,844	215,238	224,282	233,526	242,501	215,238	228,819	242,285	255,139
Harrow	207,988	205,263	202,647	201,471	207,988	207,546	207,062	207,718	207,988	210,812	213,276	216,537
Havering	224,720	217,413	211,729	207,509	224,720	218,864	214,632	211,811	224,720	220,355	217,845	216,822
Hillingdon	243,052	242,358	242,281	242,585	243,052	243,820	245,294	247,077	243,052	247,993	253,229	258,335
Hounslow	212,668	214,075	216,424	219,059	212,668	220,144	227,062	233,351	212,668	222,307	231,213	239,232
Kingston upon Thames	147,625	151,898	155,515	158,864	147,625	153,768	158,941	163,612	147,625	154,542	160,566	166,046
Merton	188,348	195,738	202,617	208,622	188,348	197,763	206,429	214,047	188,348	203,608	216,970	228,503
Redbridge	239,329	240,797	242,948	245,469	239,329	245,757	252,238	258,607	239,329	248,220	257,637	267,049
Richmond upon Thames	172,808	172,160	170,814	170,277	172,808	174,086	174,402	175,235	172,808	175,008	176,414	178,322
Sutton	180,174	181,779	183,213	184,746	180,174	183,309	186,202	189,067	180,174	184,413	188,582	192,729
Waltham Forest	218,649	221,517	226,059	230,873	218,649	222,477	228,165	234,214	218,649	225,223	233,850	242,748
Outer Boroughs	4,416,354	4,440,901	4,474,381	4,514,260	4,416,354	4,514,583	4,610,973	4,705,597	4,416,354	4,579,759	4,736,786	4,886,537
Greater London	7,188,006	7,327,373	7,466,898	7,600,767	7,188,006	7,441,538	7,679,348	7,899,063	7,188,006	7,596,433	7,960,586	8,287,145

**Table 7 Greater London Central Household Projection, by Type of Household**

	<b>1991</b>	<b>1996</b>	<b>2001</b>	<b>2006</b>	<b>2011</b>	<b>2016</b>	<b>Change 2001-16</b>
<b>Married Couple Households</b>	1,244,071	1,129,938	1,049,278	965,798	909,153	871,863	<b>-177,415</b>
<b>Cohabiting Couple Households</b>	193,574	242,815	336,974	420,606	483,649	524,534	<b>187,560</b>
<b>Lone Parent Households</b>	190,852	229,524	262,548	286,361	304,114	319,486	<b>56,938</b>
<b>One Person Households</b>	882,466	954,640	1,044,410	1,121,019	1,202,370	1,299,840	<b>255,430</b>
<b>Other 2+ Person Households</b>	298,092	327,494	363,232	394,594	426,100	457,239	<b>94,007</b>
<b>Total Households</b>	<b>2,809,055</b>	<b>2,884,411</b>	<b>3,056,442</b>	<b>3,188,378</b>	<b>3,325,386</b>	<b>3,472,962</b>	<b>416,520</b>
<b>Average Household Size</b>	<b>2.395</b>	<b>2.366</b>	<b>2.319</b>	<b>2.302</b>	<b>2.275</b>	<b>2.244</b>	<b>-</b>

**Table 8: Greater London Economic Activity Projections by age and gender**

Sex/Age	Activity Rate (%)	Population (000s)	Econ. Active (000s)	Activity Rate (%)	Population (000s)	Econ. Active (000s)
		<b>2001</b>			<b>2006</b>	
<b>Males</b>						
16-19	(57.9)	169.1	97.9	(58.7)	180.3	105.9
20-24	(80.4)	254.5	204.5	(81.4)	275.5	224.2
25-34	(91.4)	676.6	618.5	(90.5)	677.4	613.2
35-44	(91.3)	566.9	517.7	(90.3)	590.6	533.1
45-54	(88.8)	403.2	357.9	(88.1)	431.6	380.2
55-59	(78.5)	157.9	124.0	(77.0)	182.5	140.5
60-64	(61.6)	136.8	84.2	(59.5)	139.1	82.8
65+	(11.3)	374.1	42.2	(10.7)	357.3	38.3
Total 16+	(74.7)	2739.0	2046.9	(74.7)	2834.4	2118.2
<b>Females</b>						
16-19	(55.5)	163.1	90.5	(54.9)	174.8	96.0
20-24	(71.5)	276.9	197.9	(73.5)	304.9	224.1
25-34	(78.7)	716.2	563.6	(80.3)	731.8	587.7
35-44	(74.2)	584.3	433.4	(74.8)	618.9	463.1
45-54	(78.2)	425.3	332.7	(80.5)	454.8	366.0
55-59	(59.4)	169.6	100.7	(60.1)	194.4	116.7
60-64	(38.2)	145.4	55.6	(40.8)	149.8	61.1
65+	(4.9)	517.8	25.6	(5.0)	488.4	24.6
Total 16+	(60.0)	2998.5	1799.9	(62.2)	3117.8	1939.3
Total Persons 16+	(67.0)	5737.5	3846.8	(68.2)	5952.1	4057.5
<b>2011</b>						
<b>2016</b>						
<b>Males</b>						
16-19	(59.6)	183.9	109.6	(59.4)	184.9	109.9
20-24	(82.1)	285.1	234.1	(82.1)	287.0	235.6
25-34	(89.5)	697.7	624.3	(89.5)	711.3	636.7
35-44	(88.7)	579.6	514.2	(88.7)	579.7	514.2
45-54	(87.5)	484.3	423.8	(87.4)	501.7	438.6
55-59	(74.4)	178.4	132.8	(74.4)	203.4	151.3
60-64	(56.2)	159.5	89.6	(56.1)	156.9	88.1
65+	(10.1)	351.0	35.6	(10.1)	366.3	37.1
Total 16+	(74.1)	2919.6	2164.0	(73.9)	2991.3	2211.4
<b>Females</b>						
16-19	(54.6)	178.2	97.3	(54.5)	179.2	97.6
20-24	(74.4)	314.4	233.8	(74.4)	315.9	234.9
25-34	(81.9)	762.6	624.5	(81.9)	778.4	637.4
35-44	(75.4)	609.1	459.5	(75.3)	615.8	464.0
45-54	(82.7)	519.9	430.1	(82.7)	547.1	452.2
55-59	(60.5)	190.3	115.2	(60.5)	217.5	131.6
60-64	(42.5)	170.8	72.6	(42.5)	168.0	71.4
65+	(5.0)	475.3	23.9	(5.0)	488.2	24.5
Total 16+	(63.9)	3220.7	2057.0	(63.8)	3310.1	2113.5
Total Persons 16+	(68.7)	6140.3	4221.0	(68.6)	6301.4	4324.9

## Scenario 7.9 Forecasts

The household changes between 2001 and 2016 in the Central projection were compared to the total number of additional homes from 'London's Housing Capacity'. This showed where and to what extent the 'migration-based' demand was out of step with capacity. The population distribution amongst the boroughs was revised such that it equalised the extent of excess 'demand' for homes throughout the London boroughs.

Revised populations by age and gender for each borough were calculated for each year from 2002 to 2016. Initially borough total populations for 2016 were calculated using the difference between the Central and High (or Low) projections to match the revised total population in 2016.

For example, if in 2016 in a particular borough the Central projection was 200 thousand, the High projection was 220 thousand and the Revised total was 214 thousand; at each single year of age a first estimate of the Revised population would be taken as:

$$\text{'Central'} + ((214-200)/(220-200)) * (\text{'High'} \text{ minus 'Central'})$$

This calculation was made at all ages in all years from 2002 to 2016. The sum of the resulting borough populations did not precisely match the original Central projection for Greater London, so a final adjustment scales the population at each age/gender/year to match the London totals.

The resulting borough populations are then converted to households as indicated above.

The final stage of preparing the Scenario 7.9 forecasts is to 'benchmark' the number of households. The process was used in SDS Technical Report 5 in order to help overcome the inconsistencies in household totals and household sizes as between ODPM household estimates and the Survey of English Housing throughout the late 1990s. As 2001 Census output on households is not yet available, it is valid to repeat this exercise as all of the household projections have been prepared using a reduced version of the standard ODPM methodology with the resulting projected decline in average household size.

Benchmarking has been done for Scenario 7.9 by using constant 2001 average household size. Table 9 shows the borough level results of the conversion of the population projections to Scenario 7.9 together with the original and benchmarked households for 2016.

All boroughs show increases in both population and households over the period 2001-16. For Greater London the growth in households, as originally projected, is slightly at variance with the Central projection due to the different distribution of population amongst the boroughs. The Growth is 414 thousand compared with 417 thousand. When the households are 'benchmarked' to the average households size as projected for 2001 the household growth for London is reduced to 307 thousand. This compares to the growth in homes for the same period as determined by the London Housing Capacity Study<sup>7</sup> of 330 thousand.

---

<sup>7</sup> 'London's Housing Capacity', GLA, 2000.

In the original *draft London Plan* Scenario 8.1 projections the benchmarking process was done with constant 1996 levels of average household size that equated to a London average of 2.35 persons. By benchmarking at the projected average household size for 2001 the Scenario 7.9 forecasts have a reduced overall London average household size of 2.317 persons.

**Table 9: Summary of Scenario 7.9**

	Population			Original Households			Average Household Size		Benchmarked Households		'London's Housing Capacity'	
	2001	2016	Change	2001	2016	Change	(AHS) <sup>8</sup>		Change	AHS <sup>9</sup>		
			2001-16			2001-16	2001	2016	2001-16	2016		
<b>Camden</b>	198,432	223,615	25,183	91,669	109,918	18,249	2.067	1.945	103,451	11,782	2.067	12,678
<b>Kensington &amp; Chelsea</b>	159,147	173,046	13,899	82,191	90,530	8,339	1.865	1.842	89,387	7,196	1.865	7,782
<b>Westminster, City of</b>	181,691	207,221	25,530	88,886	101,010	12,124	1.926	1.934	101,397	12,511	1.926	13,470
<b>City of London</b>	7,216	9,327	2,111	3,644	4,724	1,080	1.738	1.745	4,744	1,100	1.738	1,177
<b>Central Boroughs</b>	546,486	613,211	66,725	266,390	306,182	39,792	1.953	1.908	298,979	32,589	(1.954)	35,108
<b>Hackney</b>	203,352	224,201	20,849	87,973	99,341	11,368	2.287	2.234	97,035	9,062	2.287	9,813
<b>Hammersmith &amp; Fulham</b>	165,476	175,987	10,511	79,503	84,193	4,690	2.047	2.058	84,621	5,118	2.047	5,612
<b>Haringey</b>	216,809	250,693	33,884	94,032	111,215	17,183	2.284	2.235	108,788	14,756	2.284	15,920
<b>Islington</b>	176,103	200,611	24,508	81,039	93,077	12,038	2.132	2.116	92,394	11,355	2.132	12,266
<b>Lambeth</b>	266,791	311,389	44,598	124,411	146,783	22,372	2.115	2.093	145,284	20,873	2.115	22,516
<b>Lewisham</b>	249,451	275,293	25,842	109,481	125,384	15,903	2.258	2.178	120,928	11,447	2.258	12,380
<b>Newham</b>	244,291	276,806	32,515	90,994	109,827	18,833	2.669	2.506	103,143	12,149	2.669	13,133
<b>Southwark</b>	245,416	289,980	44,564	111,258	134,143	22,885	2.184	2.141	131,521	20,263	2.184	21,798
<b>Tower Hamlets</b>	196,630	257,714	61,084	79,415	112,077	32,662	2.436	2.266	104,238	24,823	2.436	26,626
<b>Wandsworth</b>	260,847	284,954	24,107	114,815	125,626	10,811	2.235	2.236	125,673	10,858	2.235	11,828
<b>Rest of Inner Boroughs</b>	2,225,166	2,547,627	322,461	972,921	1,141,666	168,745	2.259	2.206	1,113,626	140,705	(2.261)	151,892
<b>Inner Boroughs</b>	2,771,652	3,160,837	389,185	1,239,311	1,447,848	208,537	2.193	2.143	1,412,605	173,294	(2.196)	187,000

<sup>8</sup> Note that benchmarked 2016 average household sizes for the borough groupings and for Greater London are not exactly the same as in the original projection for 2001 since there is a different distribution of population and households amongst the boroughs

**Table 9: Summary of Scenario 7.9**

	Population			Original Households			Average Household Size		Benchmarked Households			'London's Housing Capacity'	
	2001	Change		2001	Change		(AHS)		2016	Change		AHS <sup>10</sup>	2001-16
		2016	2001-16		2016	2001-16	2001	2016		2001-16	2016		
<b>Barking &amp; Dagenham</b>	164,346	179,289	14,943	64,243	73,227	8,984	2.540	2.431	70,107	5,864	2.540	6,289	
<b>Barnet</b>	315,267	344,332	29,065	126,915	143,825	16,910	2.444	2.359	138,846	11,934	2.444	12,844	
<b>Bexley</b>	218,756	227,977	9,221	90,048	98,169	8,121	2.419	2.312	93,840	3,792	2.419	4,052	
<b>Brent</b>	263,805	287,586	23,781	107,884	121,699	13,815	2.419	2.338	117,644	9,760	2.419	10,512	
<b>Bromley</b>	296,155	314,876	18,721	126,051	138,307	12,256	2.322	2.251	134,067	8,016	2.322	8,568	
<b>Croydon</b>	331,530	361,237	29,707	136,171	156,068	19,897	2.403	2.286	148,433	12,262	2.403	13,144	
<b>Ealing</b>	301,553	322,909	21,356	125,321	137,538	12,217	2.375	2.319	134,275	8,954	2.375	9,684	
<b>Enfield</b>	274,343	292,334	17,991	110,626	123,121	12,495	2.460	2.357	117,951	7,325	2.460	7,872	
<b>Greenwich</b>	215,238	242,338	27,100	90,300	106,374	16,074	2.358	2.256	101,765	11,465	2.358	12,283	
<b>Harrow</b>	207,988	218,579	10,591	82,096	89,296	7,200	2.509	2.426	86,330	4,234	2.509	4,571	
<b>Havering</b>	224,720	236,283	11,563	91,963	100,000	8,037	2.422	2.342	96,688	4,725	2.422	5,037	
<b>Hillingdon</b>	243,052	256,794	13,742	98,008	108,502	10,494	2.451	2.339	103,538	5,530	2.451	5,971	
<b>Hounslow</b>	212,668	228,108	15,440	86,165	96,025	9,860	2.440	2.350	92,456	6,291	2.440	6,796	
<b>Kingston upon Thames</b>	147,625	156,528	8,903	61,719	67,946	6,227	2.362	2.277	65,516	3,797	2.362	4,117	
<b>Merton</b>	188,348	202,551	14,203	79,297	87,417	8,120	2.360	2.303	85,319	6,022	2.360	6,483	
<b>Redbridge</b>	239,329	260,031	20,702	94,974	108,516	13,542	2.491	2.371	103,265	8,291	2.491	8,891	
<b>Richmond upon Thames</b>	172,808	179,031	6,223	77,686	79,161	1,475	2.198	2.236	80,550	2,864	2.198	3,147	
<b>Sutton</b>	180,174	191,580	11,406	76,073	85,331	9,258	2.341	2.221	80,977	4,904	2.341	5,262	
<b>Waltham Forest</b>	218,649	235,864	17,215	91,591	101,744	10,153	2.370	2.304	98,875	7,284	2.370	7,847	
<b>Outer Boroughs</b>	4,416,354	4,738,226	321,872	1,817,131	2,022,266	205,135	2.405	2.319	1,950,444	133,313	(2.405)	143,369	
<b>Greater London</b>	<b>7,188,006</b>	<b>7,899,063</b>	<b>711,057</b>	<b>3,056,442</b>	<b>3,470,114</b>	<b>413,672</b>	<b>2.319</b>	<b>2.246</b>	<b>3,363,049</b>	<b>306,607</b>	<b>(2.317)</b>	<b>330,368</b>	

# **Regular briefings and data from GLA Data Management and Analysis Group**

DMAG has instituted a new series of publications, covering all aspects of DMAG work.

*DMAG Briefings* will now incorporate the Census Information Notes (CIN) and Population Advice Notes (PAN). The traditional content of both series will still appear regularly.

The latest DMAG Briefings are:

DMAG 2003-1	Disabled people and the labour market	Lorna Spence	January 2003
DMAG 2003-2	2001 Borough Demographic Profiles	Baljit Bains/Iryna Pylypchuk	January 2003

If you would like copies of previous briefings, please contact Jackie Maguire at the Data Management and Analysis Group.

[Jackie.Maguire@london.gov.uk](mailto:Jackie.Maguire@london.gov.uk)

**Contact details for the Data Management and Analysis Group are as follows:**

**Rob Lewis (020 7983 4652)** is **Head of the Data Management and Analysis Group**, with overall responsibility for all DMAG work. [rob.lewis@london.gov.uk](mailto:rob.lewis@london.gov.uk)

**Bill Armstrong (020 7983 4653)** works in the **Census Team** with particular responsibilities for **commissioned tables, workplace data and mapping**. [bill.armstrong@london.gov.uk](mailto:bill.armstrong@london.gov.uk)

**Baljit Bains (020 7983 4613)** works in the **Demography Team** and is responsible for the borough and ward level projections. [baljit.bains@london.gov.uk](mailto:baljit.bains@london.gov.uk)

**Hywel Davies (020 7983 4696)** is responsible for the **SASPAC** project and for the development of GIS work. [hywel.davies@london.gov.uk](mailto:hywel.davies@london.gov.uk)

**David Ewens (020 7983 4656)** is responsible for **school roll projections**, education research and data analysis. [david.ewens@london.gov.uk](mailto:david.ewens@london.gov.uk)

**Dennis Grenham (020 7983 4532)** works mostly on **statistical compendia, election statistics and special publications**. [dennis.grenham@london.gov.uk](mailto:dennis.grenham@london.gov.uk)

**John Hollis (020 7983 4604)** is responsible for the work of the **Demography Team**, including **household projections and demographic modelling**. [john.hollis@london.gov.uk](mailto:john.hollis@london.gov.uk)

**Eileen Howes (020 7983 4657)** is responsible for the work of the **Census and Social Inclusion Teams**. [eileen.howes@london.gov.uk](mailto:eileen.howes@london.gov.uk)

**Ed Klodawski (020 7983 4694)** works in the **Demography Team**. He holds a joint post with the **London Health Observatory** and specialises in **ethnic demography and health** issues. [edmund.klodawski@london.gov.uk](mailto:edmund.klodawski@london.gov.uk)

**Rachel Leeser (020 7983 4699)** works in the **Census Team** with particular responsibilities for **census analysis** and the **Samples of Anonymised Records**. [rachel.leeser@london.gov.uk](mailto:rachel.leeser@london.gov.uk)

**Jackie Maguire (020 7983 4655)** is responsible to the Group Head and provides general support to the Group. [jackie.maguire@london.gov.uk](mailto:jackie.maguire@london.gov.uk)

**Michael Minors (020 7983 4654)** is responsible for the work of the **General Statistics and Education Team**. [michael.minors@london.gov.uk](mailto:michael.minors@london.gov.uk)

**Iryna Pylypchuk (020 7983 4534)** is an Assistant Research and Statistical Analyst working in the **Demography Team**. [iryna.pylypchuk@london.gov.uk](mailto:iryna.pylypchuk@london.gov.uk)

**Lorna Spence (020 7983 4658)** is a member of the **Social Inclusion Team**, with particular responsibility for the **Labour Force Survey, DWP data** and other **social inclusion datasets**. [lorna.spence@london.gov.uk](mailto:lorna.spence@london.gov.uk)

Please use the above descriptions in deciding whom to contact to assist you with your information needs.