

## ODPM 2003-based Projections of Households in England and the Regions to 2026

### Introduction

ODPM released (on 14 March 2006) regional totals of households projected to 2026. These are based on the ONS 2003-based subnational population projections and are the first new government household projections since the DETR 1996-based projections were published in 1999. In particular they are the first to reflect the results of the 2001 Census. The focus of this *Update* is the period 2006-2026, where possible, as this is the main period of the revisions to the *London Plan*. All data published so far are available on the ODPM website:

<http://www.odpm.gov.uk/index.asp?id=1002882&PressNoticeID=2097>

### Results

#### 2003-based projections

Between 2006 and 2026, the number of households in England is projected to grow by 4.23 million (19.7%). The largest absolute growth is in the one-person households, 3.06 million (44.8%). One-person households account for nearly three-quarters of the total growth. The fastest growing household type is projected to be cohabiting couple households: a 1.20 million increase equivalent to 55.4%. This increase is partly a consequence of the projected fall of 575 thousand in the number of married couple households.

A similar pattern of change is seen for London. Between 2006 and 2026, the number of households is projected to increase by 735 thousand (23.0%), with the largest percentage increase in the cohabiting couple households (71.1%) and the largest share of the growth from the one-person households: 507 thousand. In London, both the reduction in married couple households and the rise in cohabiting couple households are projected to be significantly faster than seen nationally. This partly reflects the younger age structure of London.

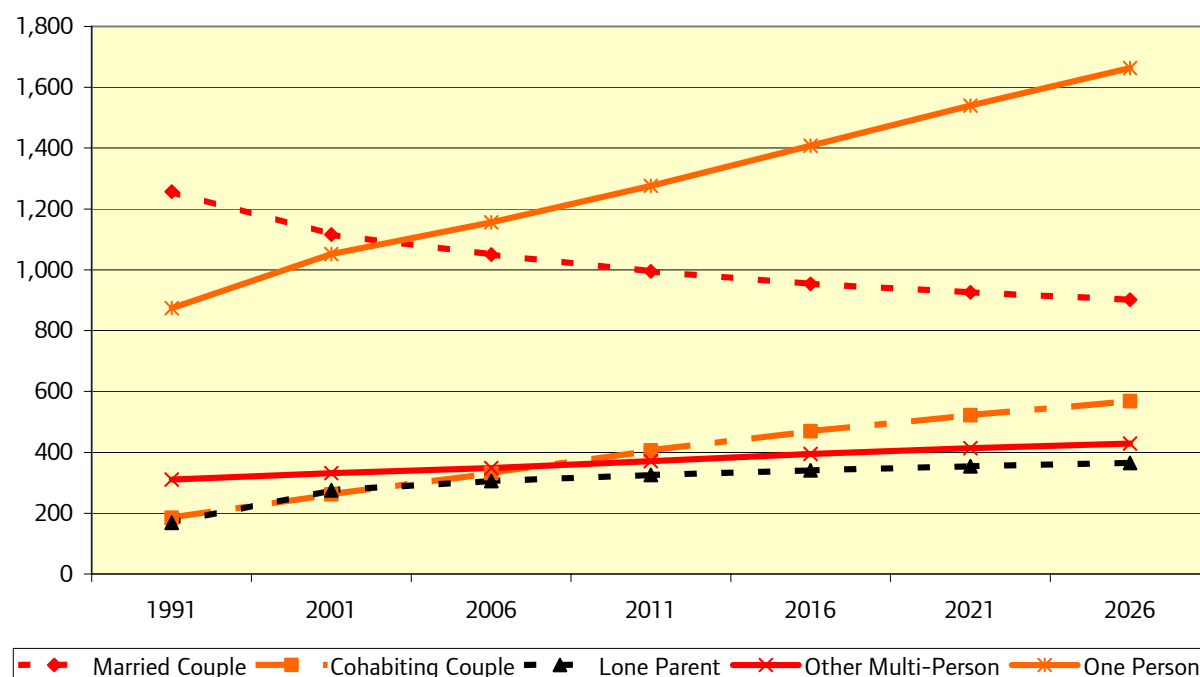
**Table 1: 2003-based household projections, by type, England and London**

Thousands	1991	2001	2006	2011	2016	2021	2026	Change 2006-26 %	
<b>England</b>									
Household types:									
married couple	10,528	9,709	9,409	9,170	9,024	8,935	8,834	-575	-6.1
cohabiting couple	1,161	1,788	2,161	2,567	2,895	3,148	3,358	1,197	55.4
lone parent	977	1,476	1,642	1,735	1,794	1,837	1,876	234	14.3
other multi-person	1,407	1,387	1,447	1,531	1,621	1,698	1,759	312	21.6
one person	5,094	6,163	6,825	7,562	8,370	9,164	9,886	3,061	44.8
<b>All households</b>	<b>19,166</b>	<b>20,523</b>	<b>21,485</b>	<b>22,566</b>	<b>23,705</b>	<b>24,781</b>	<b>25,713</b>	4,228	19.7
Private household population	47,023	48,558	49,577	50,671	51,824	52,975	53,993	4,416	8.9
Average household size	2.45	2.37	2.31	2.25	2.19	2.14	2.10	-0.210	
<b>London GOR</b>									
Household types:									
married couple	1,257	1,116	1,050	995	954	926	902	-148	-14.1
cohabiting couple	185	262	332	406	469	522	568	236	71.1
lone parent	169	275	306	326	341	354	365	59	19.3
other multi-person	311	332	348	371	395	414	429	81	23.3
one person	874	1,052	1,156	1,276	1,408	1,540	1,663	507	43.9
<b>All households</b>	<b>2,796</b>	<b>3,036</b>	<b>3,191</b>	<b>3,374</b>	<b>3,567</b>	<b>3,756</b>	<b>3,926</b>	735	23.0
Private household population	6,714	7,229	7,428	7,665	7,914	8,150	8,353	925	12.5
Average household size	2.40	2.38	2.33	2.27	2.22	2.17	2.13	-0.200	

Source: ODPM 2003-based Household Projections

The average household size is projected to fall, both nationally and at Government Office Region level. In England the average household size is projected to be 2.10 by 2026, compared with 2.13 in London.

**Chart 1: Projected households by type, London, thousands**



The total number of households is projected to rise in all regions of England, with regions in the south and east (London, East, East Midlands SE and SW) expected to experience proportionately higher growth than the northern and western regions. The lowest growth, making up only 2.5% of the increase across England is seen in the North East, an additional 106 thousand households (9.6% growth) between 2006 and 2026. The highest growth rate is expected in the South West, 536 thousand households (24.3%), although the highest share of England's growth (739 thousand or 17.5%) comes from the South East with London just behind.

**Table 2: 2003-based household projections, total households, GORs**

Thousands	1991	2001	2006	2011	2016	2021	2026	Change 2006-26	%
North East	1,046	1,075	1,105	1,136	1,168	1,194	1,211	106	9.6
North West	2,722	2,827	2,935	3,055	3,179	3,290	3,378	443	15.1
Yorks and Humberside	1,987	2,069	2,153	2,248	2,348	2,437	2,511	358	16.6
East Midlands	1,600	1,737	1,839	1,942	2,048	2,146	2,230	391	21.3
West Midlands	2,050	2,154	2,244	2,338	2,436	2,526	2,602	358	16.0
East of England	2,032	2,236	2,364	2,504	2,653	2,797	2,926	562	23.8
London	2,796	3,036	3,191	3,374	3,567	3,756	3,926	735	23.0
South East	3,028	3,294	3,445	3,626	3,822	4,013	4,184	739	21.5
South West	1,905	2,093	2,209	2,342	2,485	2,622	2,745	536	24.3

Source: ODPM 2003-based Household Projections

**Comparison between 1996-based and 2003-based projections**

The 1996-based projections were produced up to 2021; therefore comparisons between the two sets of projections have been made at 2001 and 2021. In the 1996-based projections, the data for 2001 was a projection, whereas in the 2003-based projections, 2001 was based on the 2001

Census and the ONS mid-2001 population estimates. Comparison of the 2001 data shows that the total number of households was overestimated in the 1996-based projections by 192 thousand (0.9%) in England and by 85 thousand (2.7%) in London. The 1996-based projections tended to underestimate married couples (particularly in London) and lone parent households and overstated the actual numbers of cohabiting couples (again, mainly in London), other multi-person and one-person households. The actual number of cohabiting couple households in London at mid-2001 was 82 thousand (23.9%) lower than in the 1996-based projections.

Both projections show a significant fall in the number of married couple households between 2001 and 2021. The other household types are all projected to increase, with the one-person households accounting for the greatest part of the increase in both projections.

However, the main difference between the two sets of projections is the magnitude of the change in each of the household types between 2001 and 2021. For example, for London, in the 1996-based projections, the number of lone parent households was projected to increase by 11 thousand (4.3%), whereas the latest projection shows an increase of 79 thousand (28.7%). Although not on the same scale, there is a significant difference in the projections for the number of one-person households; an increase of 369 thousand (34.9%) in the 1996-based projections compared with an increase of 488 thousand (46.4%) in the current projections.

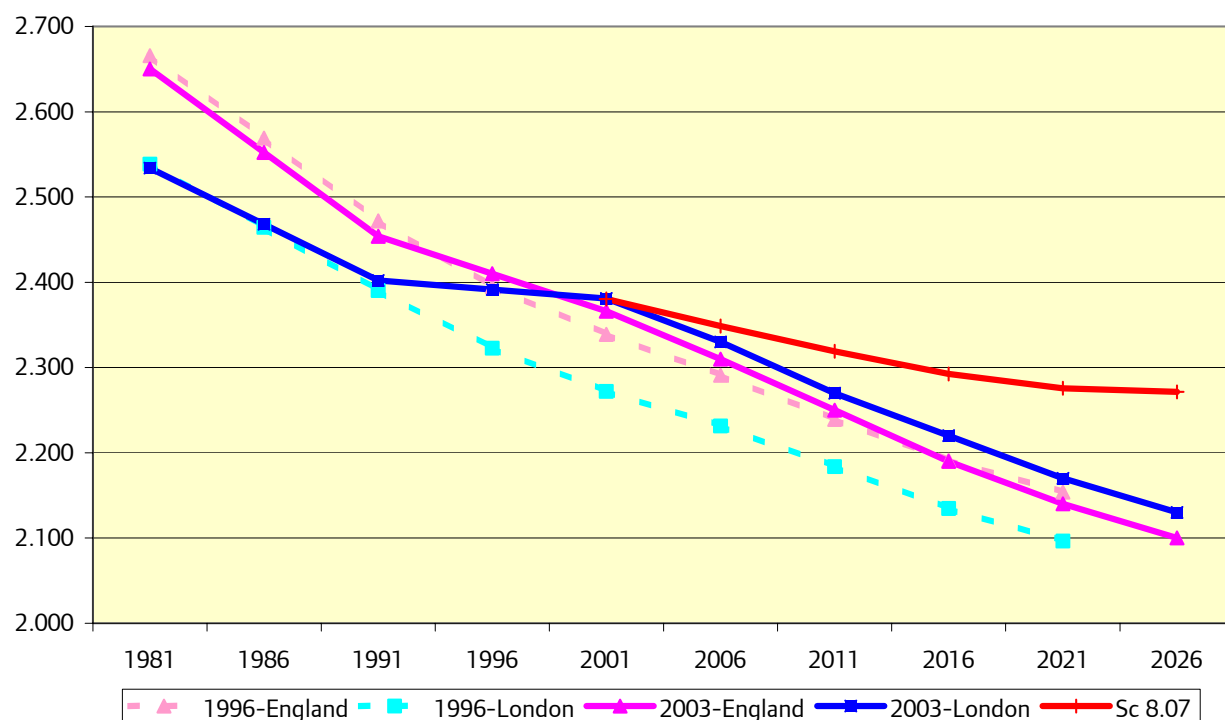
**Table 3: Comparison of 1996-based and 2003-based projections, England and London**

	1996-based			2003-based			Difference	
	2001 (000s)	2021 (000s)	Change (000s)	2001 (000s)	2021 (000s)	Change (000s)	2001 %	2021 %
<b>England</b>								
Household types:								
married couple	9,701	9,157	-544	9,709	8,935	-774	0.1	-2.4
cohabiting couple	1,863	2,761	898	1,788	3,148	1,360	-4.0	14.0
lone parent	1,278	1,288	10	1,476	1,837	361	15.5	42.7
other multi-person	1,668	2,286	618	1,387	1,698	311	-16.9	-25.7
one person	6,204	8,509	2,304	6,163	9,164	3,001	-0.7	7.7
All households	20,715	24,000	3,286	20,523	24,781	4,258	-0.9	3.3
Private household population	48,446	51,704	3,258	48,558	52,975	4,417	0.2	2.5
Average household size	2.34	2.15		2.37	2.14		1.3	-0.6
<b>London</b>								
Household types:								
married couple	1,081	932	-149	1,116	926	-190	3.3	-0.6
cohabiting couple	344	528	184	262	522	260	-23.9	-1.2
lone parent	268	280	11	275	354	79	2.4	26.5
other multi-person	368	476	108	332	414	82	-9.7	-13.0
one person	1,060	1,429	369	1,052	1,540	488	-0.8	7.7
All households	3,121	3,645	524	3,036	3,756	720	-2.7	3.1
Private household population	7,091	7,642	551	7,229	8,705	1,476	1.9	13.9
Average household size	2.27	2.10		2.38	2.17		4.8	3.5
<b>London as a % of England</b>								
Household types:								
			% point difference			% point difference		% point difference
married couple	11.1	10.2	-1.0	11.5	10.4	-1.1	0.4	0.2
cohabiting couple	18.5	19.1	0.7	14.7	16.6	1.9	-3.8	-2.5
lone parent	21.0	21.7	0.7	18.6	19.3	0.6	-2.4	-2.5
other multi-person	22.0	20.8	-1.2	23.9	24.4	0.4	1.9	3.6
one person	17.1	16.8	-0.3	17.1	16.8	-0.3	-0.0	0.0
All households	15.1	15.2	0.1	14.8	15.2	0.4	-0.3	-0.0
Private household population	14.6	14.8	0.1	14.9	16.4	1.5	0.3	1.7

Source: ODPM 2003-based Household Projections

The average household size in the two sets of projections also shows significant differences, particularly in London. For England the average household size in 2001, in the 1996-based projections, was 2.34 compared with 2.37 in the latest projections; however, by 2021 it has been projected to fall to 2.15 and 2.14 persons per household in the 1996 and 2003-based projections respectively. In London, the 1996-based projections showed an average household size of 2.27 in 2001 compared with 2.38 in the 2003-based projections. However, this differential is not maintained in the 2003-based projection, which falls to 2.17 in 2021 compared with 2.10.

**Chart 2: Average Household Size, England and London**



### Comment

The GLA 2005 Round Scenario 8.07 projections were prepared on the basis of the increase in homes in London according to the 2004 London Housing Capacity Study and an assumption of declining average household size in each borough based on the changing age and marital status structure of the population. It was assumed that each new home represented a new household and that by 2026 the average household size in London would be 2.272 persons, compared to 2.380 in 2001 (see Chart 2).

When the household representative rates used in the ODPM projections are made available they will be utilised in future GLA demographic projections. Meanwhile the ODPM work shows that average household size in London could decline at twice the rate assumed by the GLA and at a rate significantly above that observed between 1991 and 2001.

The 2004 LHCS shows that 310 thousand new homes could be made available in London between 2007 and 2017. This is directly reflected in the GLA projections, but the ODPM projections show an increase in the number of households between 2006 and 2016 of 376 thousand – over 20% more. The key questions are:

- Does the ONS 2003-based population projection reflect the likely outcome for London?
- Will average household size in London decline at rates more akin to 1981-1991 than 1991-2001?
- Can London properly accommodate 376 thousand new households in the next ten years?

## Technical Background

There are four main components to the ODPM projection:

- ONS 2003-based subnational population projections (released in 2004)
- Estimates of the population resident in communal establishments based on the 2001 Census
- GAD 2003-based national marital status projections (released in 2005)
- ODPM projection of household representative rates

The key element in the projections is the projection of household representative rates (HRRs) based on a local database built up from the 1971, 1981, 1991 and 2001 Censuses. At national level these data are enhanced by more up-to-date estimates from the Labour Force Survey.

HRRs are based upon five types of households:

- Married Couples (MCH) – only represented by married males
- Cohabiting Couples (CCH) – only represented by males
- Lone Parents with dependent children (LPH)
- One Person Household (OPH)
- Multi-person non-family households, including lone parents with non-dependent children only (OTH)

There are also three types of concealed households (ie families that do not include a household representative):

- Concealed Married Couples (CMCF) – only represented by married males
- Concealed Cohabiting Couples (CCCF) – only represented by males
- Concealed Lone Parents with dependent children (CLPF)

No figures on concealed households have yet been released.

Other household members are distributed as:

- Wives
- Female Cohabitees
- All other household members

This is in order to assign all household members aged 15+ to a category in the modelling process.

The projections are carried out by applying projected HRRs to the projected private household population – specified as above – by five-year age groups from 15-19 to 85+ by marital status (married, single, widowed, divorced) and cohabiting status.

The underlying population projections are vital to the outcome of the household projections. The ONS projections are trend-based using recent local migration data (1998 to 2003 averages) with future international migration constrained to the national assumption used in the GAD 2003-based national population projections. The population projections therefore take no account of planned development in each area.

## Further Data

It is anticipated that ODPM will make available the full range of results from these projections in April 2006. This will include details of the household representatives by five-year ages and marital status at regional level plus restricted detail of results for all local authorities.

Full analysis of the trends for London will have to wait until the detailed results are available. In particular attention will focus on the trends projected in individual HRRs.

For more information please contact Georgia Hay, Data Management and Analysis Group, Greater London Authority, City Hall, The Queen's Walk, London SE1 2AA. Tel: 020 7983 4347 e-mail: [georgia.hay@london.gov.uk](mailto:georgia.hay@london.gov.uk)

Copyright © Greater London Authority. Data are reproduced in this *Update* with the permission of the Controller of Her Majesty's Stationery Office and is © Crown Copyright. An acknowledgement of the source is given at the end of each table.