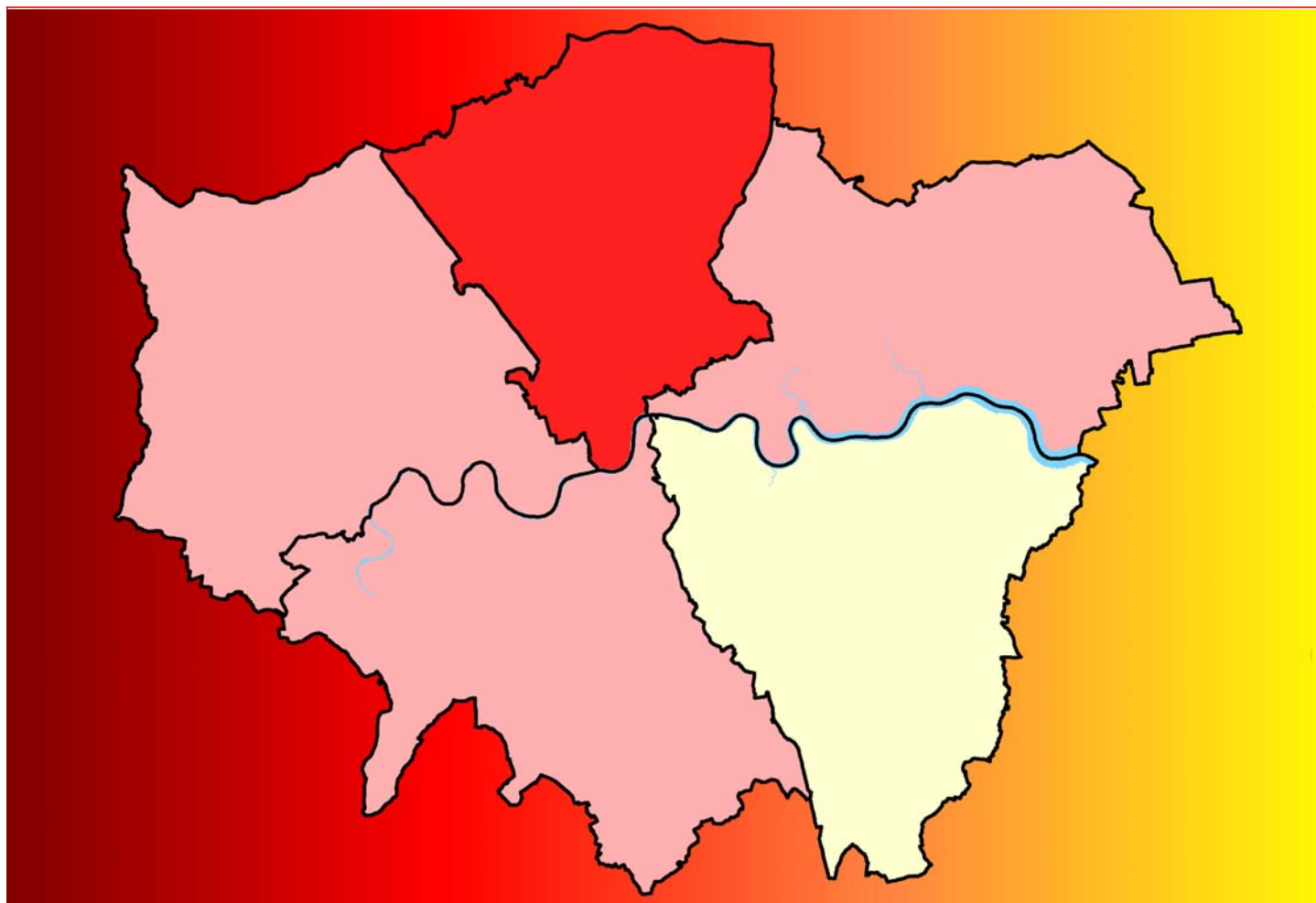


Data Management and Analysis Group

Sub-Regional Demographic Profiles 2006



DMAG Briefing 2006/17

May 2006

Sub-Regional Demographic Profiles 2006

For more information please contact:

John Hollis

Data Management and Analysis Group
Greater London Authority
City Hall (5 East)
The Queen's Walk
London SE1 2AA
Tel: 020 7983 4604
John.Hollis@london.gov.uk

Copyright Note:

GLA Population Projections

Any material produced within the GLA, or produced by a third party of the GLA, by whatever means, must be annotated with the following acknowledgement; © Greater London Authority.

Office for National Statistics Data, Vital Statistics, Mid-year Estimate

The data produced in these profiles have been reproduced with the permission of the Controller of Her Majesty's Stationery Office and are © Crown Copyright.

Maps

All maps are © Crown Copyright. All rights reserved. (Greater London Authority) (LA100032379) (2006)

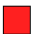


Data Sources

An acknowledgment of the sources used in this Briefing is given on each table, and further detail is available in the Appendices.

Front Page

The data presented on the front cover of this Briefing are the percentage change in the number of 16-29 year olds between mid-1994 and mid-2004.

% change in number of 16-29 year
olds between 1994 and 2004

	10 to 16.7	(1)
	0 to 10	(3)
	-9.4 to 0	(1)

Sub-Regional Demographic Profiles 2006

Contents

Map	1
Introduction	2

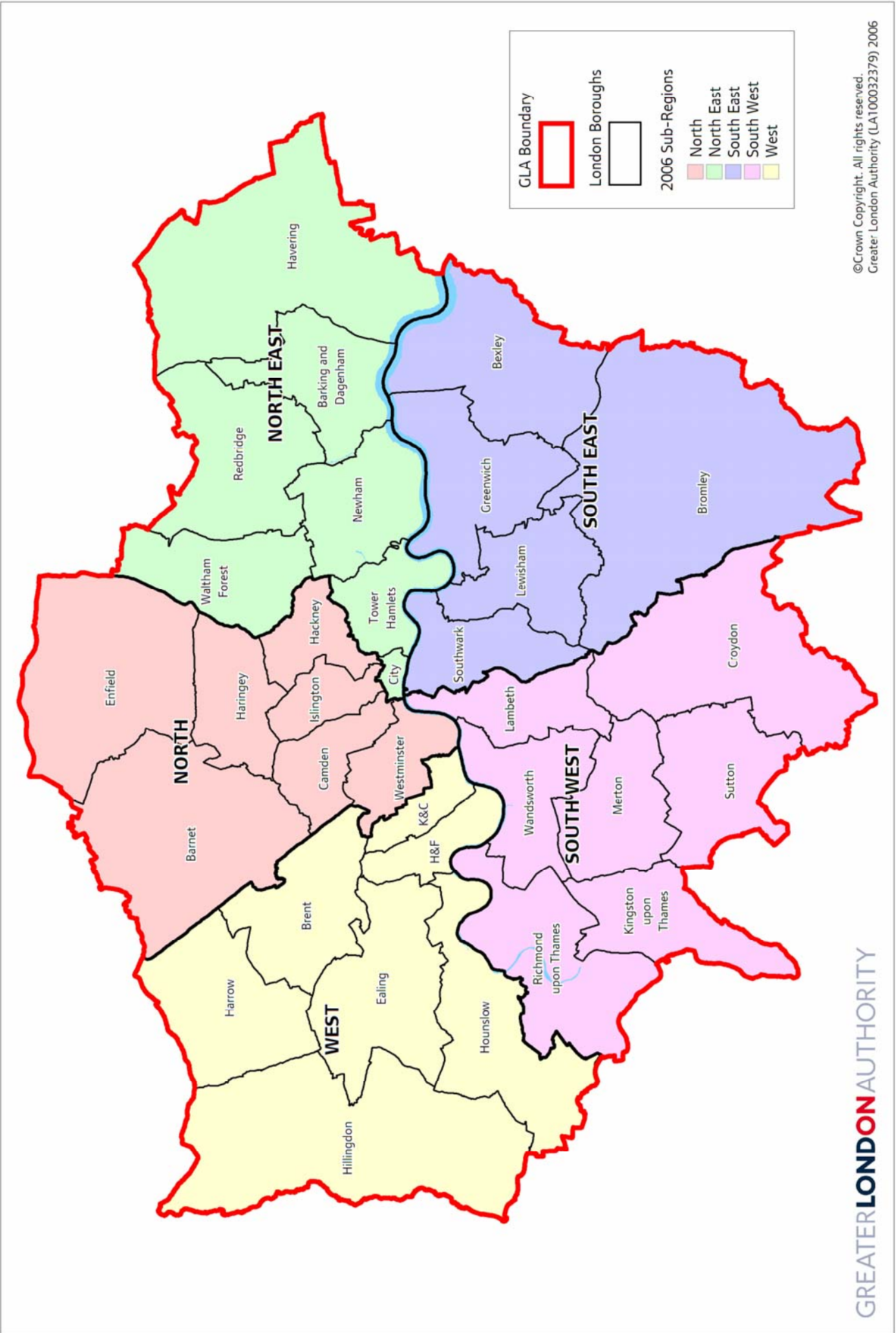
Profiles

West Sub-Region	4
North Sub-Region	6
North East Sub-Region	8
South East Sub-Region	10
South West Sub-Region	12
Greater London	14

Appendices

A – ONS mid-year estimates	16
B – GLA 2005 Round Interim Demographic Population Projections – Scenario 8.07	18
C – Vital Statistics 2004	19
D – Households and Dwellings	20
E – RPF29 Summary of Register of Electors, 2005	21
F – Labour Force	22
G – Benefits Claimants	23
H – Education Statistics	25
I – Additional Data Sources	27

2006 London Sub-Regions



Introduction

This report provides a summary of demographic and related data for each of the new GLA Sub-Regions, released recently. The profiles are designed to provide an overview of the population in each area by combining a range of data on the population, the electorate, households, education and the labour force. All data, except where otherwise stated, relate to people who live in the area, ie they are residence-based.

Each Sub-Region is compared to equivalent statistics for Greater London, and additional data for Greater London is provided on separate pages. The map on the previous page shows the Sub-Regional boundaries. The Sub-Regions are as follows:

West Sub-Region

- Brent, Ealing, Hammersmith & Fulham, Harrow, Hillingdon, Hounslow, Kensington & Chelsea

North Sub-Region

- Barnet, Camden, Enfield, Hackney, Haringey, Islington, Westminster

North East Sub-Region

- Barking & Dagenham, City, Havering, Newham, Redbridge, Tower Hamlets, Waltham Forest

South East Sub-Region

- Bexley, Bromley, Greenwich, Lewisham, Southwark

South West Sub-Region

- Croydon, Kingston, Lambeth, Merton, Richmond, Sutton, Wandsworth

Below each table, the data sources are acknowledged, while the Appendices expand further on the definitions and terminology used in this report, as well as a more general overview of demographic terminology.

The GLA's Data Management and Analysis Group (DMAG) has produced these profiles, using mainly data for 2004. No data relating to the 2001 Census has been included in this *Briefing* because previous *profiles* have covered this in detail. These *Briefings* should be referred to for Census data:

DMAG Briefing 2004-3 Borough Demographic Profiles

DMAG Briefing 2004-17 London Plan Sub-Regional Demographic Profiles

DMAG Briefing 2005-13 Borough & Sub-Regional Profiles

DMAG Briefing 2006/11 Sub-Regional Demographic Profiles 2006 should be referred to for comparable data for the London Boroughs and the superseded *Sub-Regional Development Framework* regions.

These, and other *DMAG Briefings* and *Updates* referred to in the Appendices are available via the Demography Extranet, or on request from John Hollis.

West

The list of boroughs which form this group is available in the Introduction on page 2 of this Briefing.

	West	Greater London
Geographical size (km ²)	349.45	1573.53
Population Density (persons per km ²)	4,590	4,721

Source: Ordnance Survey, Boundary Line; Office for National Statistics Mid-2004 Estimates

Population (Appendices A, B)	West			Greater London			
	ONS Mid-Year Estimates			GLA Sc 8.07		ONS	GLA
	1994	2004	2004 (%)	2026	2026 (%)	2004 (%)	2026(%)
Total (=100%)	1,460,100	1,604,000		1,694,596			
0-4	100,300	100,400	6.3	109,071	6.4	6.5	6.6
5-15	188,900	198,700	12.4	212,394	12.5	12.9	12.6
16-29	332,500	357,100	22.3	308,510	18.2	21.8	18.6
30-44	338,700	426,600	26.6	426,863	25.2	26.8	26.0
45-64	305,300	329,200	20.5	421,534	24.9	20.0	24.3
65-74	106,500	103,500	6.5	113,199	6.7	6.2	6.4
75+	88,000	88,600	5.5	103,026	6.1	5.7	5.6

Source: Office for National Statistics Mid-Year Estimates; GLA 2005 Round Interim Demographic Projections

thousands	West			Greater London				
	ONS Mid-Year Estimates by Ethnicity (Experimental)							
	2001	2001 (%)	2003	2003 (%)	Δ 2001-03	2001 (%)	2003 (%)	
All Groups	1,580.3		1,592.7		12.4			
White	1,022.6	64.7	1,023.5	64.3	0.9	71.3	70.5	
Mixed	52.0	3.3	54.4	3.4	2.4	3.1	3.3	
Asian or Asian British	313.4	19.8	313.3	19.7	-0.1	12.1	12.3	
Black or Black British	139.6	8.8	142.0	8.9	2.4	10.8	10.8	
Other	52.2	3.3	59.5	3.7	7.3	2.7	3.1	

Source: Office for National Statistics Experimental Mid-Year Estimates by Ethnicity

Components of population change, 2003-04

(Appendix A)

	West	Greater London
Population 2003	1,592,660	7,387,870
Natural Change	12,360	55,170
Internal migration inflows	..	151,660
Internal migration outflows	..	267,790
Net Internal migration	-29,630	-116,140
International migration inflows	56,390	196,160
International migration outflows	27,250	94,820
Net International migration	29,150	101,340
of which, Net Asylum Seekers	2,540	10,900
of which, Net Visitor Switchers	4,790	15,190
Other Changes	-500	360
Population 2004	1,604,040	7,428,590

Source: Office for National Statistics Components of Population Change.

.. denotes data not available

Vital Statistics, 2004

(Appendix C)

	West	Greater London
Live Births	23,902	113,679
Crude Birth Rate	14.9	15.3
General Fertility Rate	61.2	62.5
Total Period Fertility Rate	1.74	1.76
Deaths	10,917	54,063
Crude Death Rate	6.8	7.3
Standardised Mortality Ratio	91	96
Life Expectancy at Birth*		
Male	..	76.5
Female	..	81.1

Source: Office for National Statistics, Vital Statistics

.. denotes data not available. * data relate to 2002-04.

Households and Dwellings

(Appendix D)

	West	Greater London
Council Tax Dwellings		
2005	665,050	3,205,138
Δ 2001-05	13,043	87,887
Completions Data (LDD)		
2004-05	3,435	27,364

Source: Office of the Deputy Prime Minister, Table CBT1; GLA London Development Database

Electors, 2005

(Appendix E)

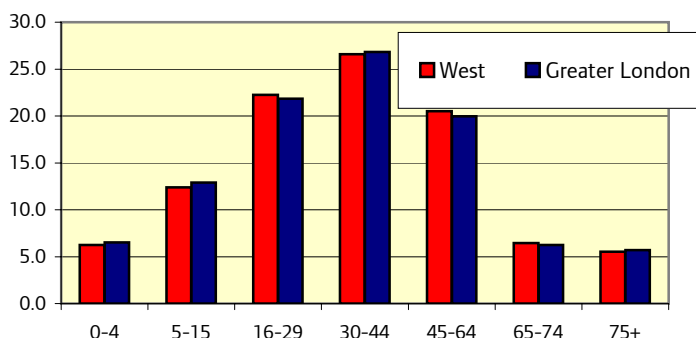
	West	Greater London
Local Government Electors	1,060,124	5,015,844

Source: Office for National Statistics, Form RPF29

West

The list of boroughs which form this group is available in the Introduction on page 2 of this Briefing.

2004 Mid-Year Estimates, Age Structure (percentages)



Labour Force

(Appendix F)

Working Age	West			Greater London		
	Male (%)	Female (%)	Total (%)	Male (%)	Female (%)	Total (%)
Economic Activity	82.7	67.4	75.3	81.4	67.3	74.6
Employment	76.6	62.7	69.9	75.6	62.2	69.1
Unemployment	7.4	7.0	7.2	7.2	7.5	7.3
Economic Inactivity	17.3	32.6	24.7	18.6	32.7	25.4
In Employment;						
Percentage Self-Employed	19.7	10.1	15.5	19.8	9.9	15.5
Percentage Part-Time	9.6	31.0	18.8	10.1	31.8	19.6

Source: Annual Population Survey, 2004 (January to December)

Working age relates to 16-64 for men and 16-59 for women.

Benefits Claimants

(Appendix G)

	West			Greater London		
	Male (%)	Female (%)	Total (%)	Male (%)	Female (%)	Total (%)
Income Support ¹	3.8	7.0	5.4	4.1	8.1	6.1
Attendance Allowance ²	9.3	16.4	13.5	10.3	17.0	14.2
Disability Living Allowance ³	3.5	3.4	3.4	3.7	3.5	3.6
Incapacity Benefit ⁴	6.5	4.5	5.5	6.9	4.7	5.8
Jobseekers Allowance ⁴	3.8	1.7	2.8	4.6	2.0	3.3
Pension Credit ⁵	21.6	26.3	24.2	22.4	27.3	25.1

Source: Department for Work and Pensions, August 2005.

Denominators for Benefits Claimants differ: ¹ 16+ population; ² 65+ population; ³ Total population; ⁴ 16-64 males, 16-59 females; ⁵ 60+ population.

Education

(Appendix H)

January 2005	West		Greater London		Greater London		
	Number of Schools	Headcount of Pupils	Number of Schools	Headcount of Pupils	Primary School Pupils by Ethnicity, %		
Nursery	19	1,244	83	7,070			
Primary	367	128,325	1,836	625,970	White	41.3	49.3
Secondary	78	84,729	406	422,730	Mixed	7.5	7.5
Special	35	2,523	154	11,720	Asian	25.1	16.7
Pupil Referral Unit	15	573	75	3,340	Black	17.6	20.3
Independent	124	33,161	489	126,290	Chinese	0.5	0.7
City Technology Colleges and Academies	3	2,624	15	13,170	Other ethnic group	6.6	4.2
All Schools	641	253,190	3,058	1,210,280			

Source: Statistics of Schools in England 2005, Department for Education and Skills

North

The list of boroughs which form this group is available in the Introduction on page 2 of this Briefing.

	North	Greater London
Geographical size (km ²)	275.72	1573.53
Population Density (persons per km ²)	6,039	4,721

Source: Ordnance Survey, Boundary Line; Office for National Statistics Mid-2004 Estimates

Population (Appendices A, B)	North					Greater London	
	ONS Mid-Year Estimates			GLA Sc 8.07		ONS	GLA
	1994	2004	2004 (%)	2026	2026 (%)	2004 (%)	2026(%)
Total (=100%)	1,463,800	1,665,000		1,823,115			
0-4	103,300	107,800	6.5	120,334	6.6	6.5	6.6
5-15	188,500	202,000	12.1	219,155	12.0	12.9	12.6
16-29	335,900	391,700	23.5	352,268	19.3	21.8	18.6
30-44	337,500	459,800	27.6	498,871	27.4	26.8	26.0
45-64	296,500	317,800	19.1	430,423	23.6	20.0	24.3
65-74	111,400	98,200	5.9	108,631	6.0	6.2	6.4
75+	90,600	87,700	5.3	93,434	5.1	5.7	5.6

Source: Office for National Statistics Mid-Year Estimates; GLA 2005 Round Interim Demographic Projections

thousands	North					Greater London	
	ONS Mid-Year Estimates by Ethnicity (Experimental)						
	2001	2001 (%)	2003	2003 (%)	Δ 2001-03	2001 (%)	2003 (%)
All Groups	1,610.6		1,650.8		40.2		
White	1,154.4	71.7	1,163.6	70.5	9.2	71.3	70.5
Mixed	59.7	3.7	63.7	3.9	4.0	3.1	3.3
Asian or Asian British	142.9	8.9	153.9	9.3	11.0	12.1	12.3
Black or Black British	193.8	12.0	196.8	11.9	3.0	10.8	10.8
Other	60.0	3.7	71.9	4.4	11.9	2.7	3.1

Source: Office for National Statistics Experimental Mid-Year Estimates by Ethnicity

Components of population change, 2003-04

(Appendix A)

	North	Greater London
Population 2003	1,650,610	7,387,870
Natural Change	13,270	55,170
Internal migration inflows	..	151,660
Internal migration outflows	..	267,790
Net Internal migration	-28,840	-116,140
International migration inflows	57,350	196,160
International migration outflows	27,410	94,820
Net International migration	29,960	101,340
of which, Net Asylum Seekers	3,490	10,900
of which, Net Visitor Switchers	4,780	15,190
Other Changes	30	360
Population 2004	1,665,020	7,428,590

Source: Office for National Statistics Components of Population Change.

.. denotes data not available

Vital Statistics, 2004

(Appendix C)

	North	Greater London
Live Births	25,543	113,679
Crude Birth Rate	15.3	15.3
General Fertility Rate	59.4	62.5
Total Period Fertility Rate	1.69	1.76
Deaths	11,371	54,063
Crude Death Rate	6.8	7.3
Standardised Mortality Ratio	97	96
Life Expectancy at Birth*		
Male	..	76.5
Female	..	81.1

Source: Office for National Statistics, Vital Statistics

.. denotes data not available. * data relate to 2002-04.

Households and Dwellings

(Appendix D)

	North	Greater London
Council Tax Dwellings		
2005	742,098	3,205,138
Δ 2001-05	24,040	87,887
Completions Data (LDD)		
2004-05	5,934	27,364

Source: Office of the Deputy Prime Minister, Table CBT1; GLA London Development Database

Electors, 2005

(Appendix E)

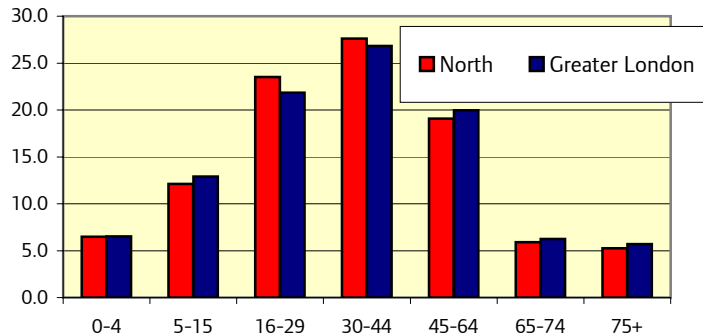
	North	Greater London
Local Government Electors	1,027,336	5,015,844

Source: Office for National Statistics, Form RPF29

North

The list of boroughs which form this group is available in the Introduction on page 2 of this Briefing.

2004 Mid-Year Estimates, Age Structure (percentages)



Labour Force

(Appendix F)

Working Age	North			Greater London		
	Male (%)	Female (%)	Total (%)	Male (%)	Female (%)	Total (%)
Economic Activity	78.4	62.4	70.7	81.4	67.3	74.6
Employment	72.3	57.2	65.0	75.6	62.2	69.1
Unemployment	7.8	8.3	8.0	7.2	7.5	7.3
Economic Inactivity	21.6	37.6	29.3	18.6	32.7	25.4
In Employment;						
Percentage Self-Employed	22.4	13.0	18.4	19.8	9.9	15.5
Percentage Part-Time	11.2	29.0	18.7	10.1	31.8	19.6

Source: Annual Population Survey, 2004 (January to December)

Working age relates to 16-64 for men and 16-59 for women.

Benefits Claimants

(Appendix G)

	North			Greater London		
	Male (%)	Female (%)	Total (%)	Male (%)	Female (%)	Total (%)
Income Support ¹	5.2	9.9	7.6	4.1	8.1	6.1
Attendance Allowance ²	11.5	18.4	15.3	10.3	17.0	14.2
Disability Living Allowance ³	3.8	3.7	3.8	3.7	3.5	3.6
Incapacity Benefit ⁴	7.9	5.5	6.7	6.9	4.7	5.8
Jobseekers Allowance ⁴	5.3	2.3	3.8	4.6	2.0	3.3
Pension Credit ⁵	26.9	29.7	28.4	22.4	27.3	25.1

Source: Department for Work and Pensions, August 2005.

Denominators for Benefits Claimants differ: ¹ 16+ population; ² 65+ population; ³ Total population; ⁴ 16-64 males, 16-59 females; ⁵ 60+ population.

Education

(Appendix H)

January 2005	North		Greater London		Greater London		
	Number of Schools	Headcount of Pupils	Number of Schools	Headcount of Pupils	Primary School Pupils by Ethnicity, %	North	London
Nursery	17	1,437	83	7,070			
Primary	400	129,824	1,836	625,970	White	47.1	49.3
Secondary	81	86,648	406	422,730	Mixed	8.9	7.5
Special	30	2,226	154	11,720	Asian	10.8	16.7
Pupil Referral Unit	23	798	75	3,340	Black	24.0	20.3
Independent	141	32,019	489	126,290	Chinese	0.9	0.7
City Technology Colleges and Academies	3	2,129	15	13,170	Other ethnic group	7.2	4.2
All Schools	695	255,090	3,058	1,210,280			

Source: Statistics of Schools in England 2005, Department for Education and Skills

North East

The list of boroughs which form this group is available in the Introduction on page 2 of this Briefing.

	North East	Greater London
Geographical size (km ²)	302.57	1573.53
Population Density (persons per km ²)	4,377	4,721

Source: Ordnance Survey, Boundary Line; Office for National Statistics Mid-2004 Estimates

Population (Appendices A, B)	North East				Greater London		
	ONS Mid-Year Estimates			GLA Sc 8.07		ONS	GLA
	1994	2004	2004 (%)	2026	2026 (%)	2004 (%)	2026(%)
Total (=100%)	1,247,700	1,324,400		1,672,024			
0-4	95,900	93,200	7.0	117,999	7.1	6.5	6.6
5-15	183,100	193,300	14.6	227,437	13.6	12.9	12.6
16-29	277,600	287,200	21.7	306,990	18.4	21.8	18.6
30-44	273,800	331,300	25.0	432,395	25.9	26.8	26.0
45-64	246,100	259,300	19.6	400,196	23.9	20.0	24.3
65-74	97,500	83,500	6.3	101,044	6.0	6.2	6.4
75+	73,800	76,500	5.8	85,963	5.1	5.7	5.6

Source: Office for National Statistics Mid-Year Estimates; GLA 2005 Round Interim Demographic Projections

thousands	North East				Greater London		
	ONS Mid-Year Estimates by Ethnicity (Experimental)						
	2001	2001 (%)	2003	2003 (%)	Δ 2001-03	2001 (%)	2003 (%)
All Groups	1,312.1		1,322.5		10.4		
White	860.7	65.6	853.9	64.6	-6.8	71.3	70.5
Mixed	32.6	2.5	35.5	2.7	2.9	3.1	3.3
Asian or Asian British	260.0	19.8	263.7	19.9	3.7	12.1	12.3
Black or Black British	133.9	10.2	139.4	10.5	5.5	10.8	10.8
Other	24.7	1.9	29.8	2.3	5.1	2.7	3.1

Source: Office for National Statistics Experimental Mid-Year Estimates by Ethnicity

Components of population change, 2003-04

(Appendix A)

	North East	Greater London
Population 2003	1,322,430	7,387,870
Natural Change	10,740	55,170
Internal migration inflows	..	151,660
Internal migration outflows	..	267,790
Net Internal migration	-24,700	-116,140
International migration inflows	26,370	196,160
International migration outflows	10,690	94,820
Net International migration	15,680	101,340
of which, Net Asylum Seekers	2,240	10,900
of which, Net Visitor Switchers	1,310	15,190
Other Changes	230	360
Population 2004	1,324,380	7,428,590

Source: Office for National Statistics Components of Population Change.

.. denotes data not available

Vital Statistics, 2004

(Appendix C)

	North East	Greater London
Live Births	22,064	113,679
Crude Birth Rate	16.7	15.3
General Fertility Rate	71.0	62.5
Total Period Fertility Rate	2.03	1.76
Deaths	10,264	54,063
Crude Death Rate	7.8	7.3
Standardised Mortality Ratio	104	96
Life Expectancy at Birth*		
Male	..	76.5
Female	..	81.1

Source: Office for National Statistics, Vital Statistics

.. denotes data not available. * data relate to 2002-04.

Households and Dwellings

(Appendix D)

	North East	Greater London
Council Tax Dwellings		
2005	552,613	3,205,138
Δ 2001-05	19,252	87,887
Completions Data (LDD)		
2004-05	7,361	27,364

Source: Office of the Deputy Prime Minister, Table CBT1; GLA London Development Database

Electors, 2005

(Appendix E)

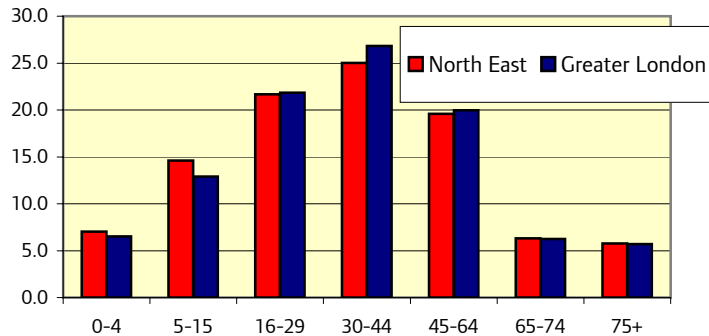
	North East	Greater London
Local Government Electors	929,605	5,015,844

Source: Office for National Statistics, Form RPF29

North East

The list of boroughs which form this group is available in the Introduction on page 2 of this Briefing.

2004 Mid-Year Estimates, Age Structure (percentages)



Labour Force

(Appendix F)

Working Age	North East			Greater London		
	Male (%)	Female (%)	Total (%)	Male (%)	Female (%)	Total (%)
Economic Activity	77.9	61.8	70.1	81.4	67.3	74.6
Employment	71.5	57.7	64.8	75.6	62.2	69.1
Unemployment	8.3	6.6	7.5	7.2	7.5	7.3
Economic Inactivity	22.1	38.2	29.9	18.6	32.7	25.4
In Employment;						
Percentage Self-Employed	18.7	6.7	13.5	19.8	9.9	15.5
Percentage Part-Time	11.6	33.7	21.2	10.1	31.8	19.6

Source: Annual Population Survey, 2004 (January to December)

Working age relates to 16-64 for men and 16-59 for women.

Benefits Claimants

(Appendix G)

	North East			Greater London		
	Male (%)	Female (%)	Total (%)	Male (%)	Female (%)	Total (%)
Income Support ¹	4.5	9.5	7.0	4.1	8.1	6.1
Attendance Allowance ²	12.8	21.4	17.8	10.3	17.0	14.2
Disability Living Allowance ³	4.1	4.3	4.2	3.7	3.5	3.6
Incapacity Benefit ⁴	7.6	5.6	6.6	6.9	4.7	5.8
Jobseekers Allowance ⁴	5.3	2.3	3.9	4.6	2.0	3.3
Pension Credit ⁵	25.9	31.8	29.2	22.4	27.3	25.1

Source: Department for Work and Pensions, August 2005.

Denominators for Benefits Claimants differ: ¹ 16+ population; ² 65+ population; ³ Total population; ⁴ 16-64 males, 16-59 females; ⁵ 60+ population.

Education

(Appendix H)

January 2005	North East		Greater London		Primary School Pupils by Ethnicity, %		
	Number of Schools	Headcount of Pupils	Number of Schools	Headcount of Pupils	North East	Greater London	
Nursery	18	1,714	83	7,070			
Primary	359	136,220	1,836	625,970	White	43.5	49.3
Secondary	92	95,345	406	422,730	Mixed	5.5	7.5
Special	23	1,920	154	11,720	Asian	30.8	16.7
Pupil Referral Unit	12	907	75	3,340	Black	16.4	20.3
Independent	53	10,311	489	126,290	Chinese	0.5	0.7
City Technology Colleges and Academies	0	0	15	13,170	Other ethnic group	1.9	4.2
All Schools	557	246,410	3,058	1,210,280			

Source: Statistics of Schools in England 2005, Department for Education and Skills

South East

The list of boroughs which form this group is available in the Introduction on page 2 of this Briefing.

	South East	Greater London
Geographical size (km ²)	322.06	1573.53
Population Density (persons per km ²)	3,869	4,721

Source: Ordnance Survey, Boundary Line; Office for National Statistics Mid-2004 Estimates

Population (Appendices A, B)	South East				Greater London		
	ONS Mid-Year Estimates			GLA Sc 8.07		ONS	GLA
	1994	2004	2004 (%)	2026	2026 (%)	2004 (%)	2026(%)
Total (=100%)	1,211,100	1,246,000		1,431,226			
0-4	89,400	80,800	6.5	93,199	6.5	6.5	6.6
5-15	166,100	168,800	13.5	181,731	12.7	12.9	12.6
16-29	267,500	242,600	19.5	259,114	18.1	21.8	18.6
30-44	278,600	329,900	26.5	363,600	25.4	26.8	26.0
45-64	240,700	259,400	20.8	350,072	24.5	20.0	24.3
65-74	94,600	84,400	6.8	96,575	6.7	6.2	6.4
75+	74,300	80,100	6.4	86,937	6.1	5.7	5.6

Source: Office for National Statistics Mid-Year Estimates; GLA 2005 Round Interim Demographic Projections

thousands	South East				Greater London		
	ONS Mid-Year Estimates by Ethnicity (Experimental)						
	2001	2001 (%)	2003	2003 (%)	Δ 2001-03	2001 (%)	2003 (%)
All Groups	1,243.5		1,243.2		-0.3		
White	969.6	78.0	960.0	77.2	-9.6	71.3	70.5
Mixed	34.5	2.8	36.1	2.9	1.6	3.1	3.3
Asian or Asian British	50.9	4.1	57.2	4.6	6.3	12.1	12.3
Black or Black British	162.7	13.1	162.0	13.0	-0.7	10.8	10.8
Other	26.0	2.1	28.3	2.3	2.3	2.7	3.1

Source: Office for National Statistics Experimental Mid-Year Estimates by Ethnicity

Components of population change, 2003-04

(Appendix A)

	South East	Greater London
Population 2003	1,243,250	7,387,870
Natural Change	7,540	55,170
Internal migration inflows	..	151,660
Internal migration outflows	..	267,790
Net Internal migration	-14,000	-116,140
International migration inflows	19,180	196,160
International migration outflows	10,260	94,820
Net International migration	8,930	101,340
of which, Net Asylum Seekers	1,120	10,900
of which, Net Visitor Switchers	1,160	15,190
Other Changes	300	360
Population 2004	1,246,000	7,428,590

Source: Office for National Statistics Components of Population Change.

.. denotes data not available

Vital Statistics, 2004

(Appendix C)

	South East	Greater London
Live Births	18,529	113,679
Crude Birth Rate	14.9	15.3
General Fertility Rate	63.5	62.5
Total Period Fertility Rate	1.85	1.76
Deaths	10,093	54,063
Crude Death Rate	8.1	7.3
Standardised Mortality Ratio	99	96
Life Expectancy at Birth*		
Male	..	76.5
Female	..	81.1

Source: Office for National Statistics, Vital Statistics

.. denotes data not available. * data relate to 2002-04.

Households and Dwellings

(Appendix D)

	South East	Greater London
Council Tax Dwellings		
2005	555,580	3,205,138
Δ 2001-05	15,381	87,887
Completions Data (LDD)		
2004-05	5,326	27,364

Source: Office of the Deputy Prime Minister, Table CBT1; GLA London Development Database

Electors, 2005

(Appendix E)

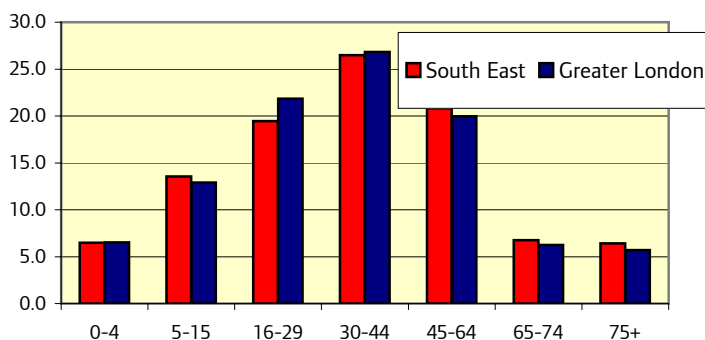
	South East	Greater London
Local Government Electors	895,997	5,015,844

Source: Office for National Statistics, Form RPF29

South East

The list of boroughs which form this group is available in the Introduction on page 2 of this Briefing.

2004 Mid-Year Estimates, Age Structure (percentages)



Labour Force

(Appendix F)

Working Age	South East			Greater London		
	Male (%)	Female (%)	Total (%)	Male (%)	Female (%)	Total (%)
Economic Activity	82.2	73.3	77.8	81.4	67.3	74.6
Employment	76.5	67.4	72.0	75.6	62.2	69.1
Unemployment	6.9	8.1	7.4	7.2	7.5	7.3
Economic Inactivity	17.8	26.7	22.2	18.6	32.7	25.4
In Employment;						
Percentage Self-Employed	20.4	8.8	15.1	19.8	9.9	15.5
Percentage Part-Time	9.3	34.7	21.0	10.1	31.8	19.6

Source: Annual Population Survey, 2004 (January to December)

Working age relates to 16-64 for men and 16-59 for women.

Benefits Claimants

(Appendix G)

	South East			Greater London		
	Male (%)	Female (%)	Total (%)	Male (%)	Female (%)	Total (%)
Income Support ¹	4.0	8.2	6.1	4.1	8.1	6.1
Attendance Allowance ²	10.5	15.3	13.3	10.3	17.0	14.2
Disability Living Allowance ³	3.9	3.5	3.7	3.7	3.5	3.6
Incapacity Benefit ⁴	7.1	4.7	5.9	6.9	4.7	5.8
Jobseekers Allowance ⁴	5.2	2.3	3.8	4.6	2.0	3.3
Pension Credit ⁵	18.8	25.5	22.6	22.4	27.3	25.1

Source: Department for Work and Pensions, August 2005.

Denominators for Benefits Claimants differ: ¹ 16+ population; ² 65+ population; ³ Total population; ⁴ 16-64 males, 16-59 females; ⁵ 60+ population.

Education

(Appendix H)

January 2005	South East		Greater London		Greater London		
	Number of Schools	Headcount of Pupils	Number of Schools	Headcount of Pupils	Primary School Pupils by Ethnicity, %		
Nursery	11	1,218	83	7,070			
Primary	341	110,550	1,836	625,970	White	60.0	49.3
Secondary	74	77,732	406	422,730	Mixed	7.4	7.5
Special	31	2,323	154	11,720	Asian	4.3	16.7
Pupil Referral Unit	10	468	75	3,340	Black	23.4	20.3
Independent	47	15,622	489	126,290	Chinese	1.0	0.7
City Technology Colleges and Academies	5	5,238	15	13,170	Other ethnic group	2.4	4.2
All Schools	519	213,160	3,058	1,210,280			

Source: Statistics of Schools in England 2005, Department for Education and Skills

South West

The list of boroughs which form this group is available in the Introduction on page 2 of this Briefing.

	South West	Greater London
Geographical size (km ²)	323.73	1573.53
Population Density (persons per km ²)	4,909	4,721

Source: Ordnance Survey, Boundary Line; Office for National Statistics Mid-2004 Estimates

Population (Appendices A, B)	South West					Greater London	
	ONS Mid-Year Estimates			GLA Sc 8.07		ONS	GLA
	1994	2004	2004 (%)	2026	2026 (%)	2004 (%)	2026(%)
Total (=100%)	1,490,800	1,589,100		1,706,947			
0-4	103,900	100,800	6.3	108,098	6.3	6.5	6.6
5-15	185,600	196,300	12.4	207,617	12.2	12.9	12.6
16-29	342,100	343,400	21.6	322,305	18.9	21.8	18.6
30-44	357,000	445,600	28.0	442,657	25.9	26.8	26.0
45-64	297,800	316,800	19.9	418,504	24.5	20.0	24.3
65-74	110,900	94,600	6.0	110,155	6.5	6.2	6.4
75+	93,600	91,600	5.8	97,611	5.7	5.7	5.6

Source: Office for National Statistics Mid-Year Estimates; GLA 2005 Round Interim Demographic Projections

thousands	South West					Greater London	
	ONS Mid-Year Estimates by Ethnicity (Experimental)					2001 (%)	2003 (%)
	2001	2001 (%)	2003	2003 (%)	Δ 2001-03		
All Groups	1,576.2		1,578.8		2.6		
White	1,210.0	76.8	1,203.8	76.2	-6.2	71.3	70.5
Mixed	50.7	3.2	52.3	3.3	1.6	3.1	3.3
Asian or Asian British	117.8	7.5	124.4	7.9	6.6	12.1	12.3
Black or Black British	162.0	10.3	159.3	10.1	-2.7	10.8	10.8
Other	35.2	2.2	39.3	2.5	4.1	2.7	3.1

Source: Office for National Statistics Experimental Mid-Year Estimates by Ethnicity

Components of population change, 2003-04

(Appendix A)

	South West	Greater London
Population 2003	1,578,950	7,387,870
Natural Change	11,250	55,170
Internal migration inflows	..	151,660
Internal migration outflows	..	267,790
Net Internal migration	-18,970	-116,140
International migration inflows	36,880	196,160
International migration outflows	19,240	94,820
Net International migration	17,610	101,340
of which, Net Asylum Seekers	1,530	10,900
of which, Net Visitor Switchers	3,140	15,190
Other Changes	310	360
Population 2004	1,589,140	7,428,590

Source: Office for National Statistics Components of Population Change.

.. denotes data not available

Vital Statistics, 2004

(Appendix C)

	South West	Greater London
Live Births	23,641	113,679
Crude Birth Rate	14.9	15.3
General Fertility Rate	59.6	62.5
Total Period Fertility Rate	1.71	1.76
Deaths	11,418	54,063
Crude Death Rate	7.2	7.3
Standardised Mortality Ratio	95	96
Life Expectancy at Birth*		
Male	..	76.5
Female	..	81.1

Source: Office for National Statistics, Vital Statistics

.. denotes data not available. * data relate to 2002-04.

Households and Dwellings

(Appendix D)

	South West	Greater London
Council Tax Dwellings		
2005	689,797	3,205,138
Δ 2001-05	16,171	87,887
Completions Data (LDD)		
2004-05	5,308	27,364

Source: Office of the Deputy Prime Minister, Table CBT1; GLA London Development Database

Electors, 2005

(Appendix E)

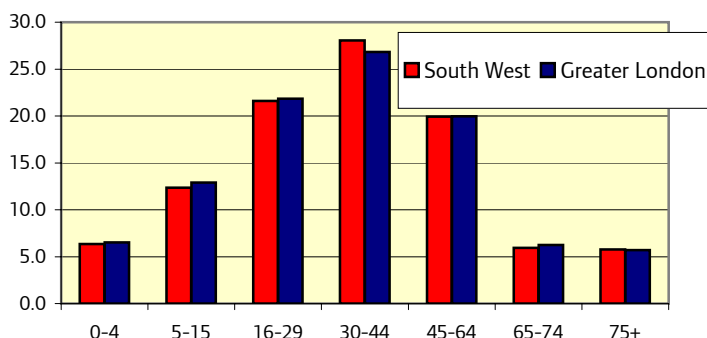
	South West	Greater London
Local Government Electors	1,102,782	5,015,844

Source: Office for National Statistics, Form RPF29

South West

The list of boroughs which form this group is available in the Introduction on page 2 of this Briefing.

2004 Mid-Year Estimates, Age Structure (percentages)



Labour Force

(Appendix F)

Working Age	South West			Greater London		
	Male (%)	Female (%)	Total (%)	Male (%)	Female (%)	Total (%)
Economic Activity	85.6	71.8	78.8	81.4	67.3	74.6
Employment	80.6	66.5	73.7	75.6	62.2	69.1
Unemployment	5.8	7.4	6.5	7.2	7.5	7.3
Economic Inactivity	14.4	28.2	21.2	18.6	32.7	25.4
In Employment;						
Percentage Self-Employed	17.8	10.2	14.4	19.8	9.9	15.5
Percentage Part-Time	9.1	31.6	19.1	10.1	31.8	19.6

Source: Annual Population Survey, 2004 (January to December)

Working age relates to 16-64 for men and 16-59 for women.

Benefits Claimants

(Appendix G)

	South West			Greater London		
	Male (%)	Female (%)	Total (%)	Male (%)	Female (%)	Total (%)
Income Support ¹	3.0	6.1	4.6	4.1	8.1	6.1
Attendance Allowance ²	8.0	14.1	11.4	10.3	17.0	14.2
Disability Living Allowance ³	3.1	2.9	3.0	3.7	3.5	3.6
Incapacity Benefit ⁴	5.5	3.5	4.5	6.9	4.7	5.8
Jobseekers Allowance ⁴	3.6	1.7	2.6	4.6	2.0	3.3
Pension Credit ⁵	18.9	23.6	21.5	22.4	27.3	25.1

Source: Department for Work and Pensions, August 2005.

Denominators for Benefits Claimants differ: ¹ 16+ population; ² 65+ population; ³ Total population; ⁴ 16-64 males, 16-59 females; ⁵ 60+ population.

Education

(Appendix H)

January 2005	South West		Greater London		Greater London		
	Number of Schools	Headcount of Pupils	Number of Schools	Headcount of Pupils	South West	Greater London	
Nursery	18	1,460	83	7,070			
Primary	369	121,046	1,836	625,970	White	56.7	49.3
Secondary	81	78,277	406	422,730	Mixed	8.6	7.5
Special	35	2,723	154	11,720	Asian	9.8	16.7
Pupil Referral Unit	15	594	75	3,340	Black	20.5	20.3
Independent	124	35,180	489	126,290	Chinese	0.6	0.7
City Technology Colleges and Academies	4	3,171	15	13,170	Other ethnic group	2.5	4.2
All Schools	646	242,450	3,058	1,210,280			

Source: Statistics of Schools in England 2005, Department for Education and Skills

Appendix A

ONS mid-year estimates

Mid-2004 estimates of resident population were published by ONS on 25 August 2005. These form part of a fully consistent time series of mid-year estimates at local authority level back to 1981. *DMAG Briefing 2005/27 ONS Mid-2004 Population Estimates* describes the data at a borough, London and national level, and looks at recent changes over time.

Definition of resident population

The estimated population of an area includes all people who usually live there, whatever their nationality. Members of HM and US Armed forces in England and Wales are included on a residential basis wherever possible. HM forces stationed outside England and Wales are not included. Students are taken to be resident at their term-time address.

ONS mid-year estimates by ethnic group

On 26 January 2006, population estimates for all local authorities in England were released for 2001, 2002 and 2003, for all 16 (2001 Census) ethnic group categories. These data are classed as *experimental statistics*, that is, they are not yet of high enough quality to be classed as *National Statistics*. The data are available by 5-year age and gender for England, and by three broad age groups and gender at local authority level. Components of population change are also available for England. The estimates by ethnic group have been constrained to the ONS mid-year estimates for these years. *Demography Update 2006/5 – ONS Population Estimates by Ethnic Group, 2001 to 2003* – outlines the key data.

Components of population change 2003-04

As part of the standard release of data from the ONS, the components of population change between one year and the next are available on the National Statistics website - <http://www.statistics.gov.uk/STATBASE/Product.asp?vlnk=14060>. These 'components of change' show the numbers of people migrating in and out of the area either from within the UK or abroad, the natural change (births minus deaths) and 'other changes'. International migration figures are comprised of data from the International Passenger Survey (IPS), people moving to and from the Republic of Ireland, Asylum Seekers and Visitor Switchers.

Internal Migration

Internal Migration figures at the local authority level are derived from the combination of National Health Service Central Register (NHSCR) continuous monitoring and changes in the patient registers that are available annually.

NHSCR - The NHSCR is a record of all NHS patients. It ensures that medical records are effectively used by the Health Authorities and that General Practitioners are paid correctly. Information is passed to the NHSCR electronically from Health Authorities based upon patients who re-register with General Practitioners in their area. The data are specific to age and gender of the patient and the former and current health areas of registration.

Health Authority Patient Registers - Every Health Authority in England and Wales holds a register of the patients registered with General Practitioners within their area of responsibility. This contains the NHS number, gender, date of acceptance at the health authority and importantly the postcode of address of the patient. By obtaining a download from each patient register on an annual basis combining all 104 patient register extracts together, ONS can create a total register for the whole of England and Wales. Comparing records in one year with those of the previous linking on NHS numbers enables the identification of people who change their postcode and therefore may be defined as a person who, between one year and the next, changes their area of residence.

The two files are linked such that the number of migrants at local authority level based upon the patient registers is grossed up to allow for the number of all persons recording a change of address at Health Authority level throughout the year under continuous monitoring using the NHSCR data.

International Migration

International migration data are estimated from the International Passenger Survey (IPS), movement to and from the Republic of Ireland, Asylum Seekers and Visitor Switchers.

IPS - The IPS is a voluntary sample survey which is conducted continuously at the main ports of entry into the UK, ie air, sea, Channel Tunnel. Information on age, sex, marital status and citizenship are all collected by the survey, and people are surveyed both entering and leaving the UK. Figures on international migration are published annually through the ONS *MN* Series.

Visitor Switchers - Visitor switchers are people who on entry to the UK are remaining for under one year, but who subsequently stay for greater than a year. The data shown are not the total flows rather an estimate of flows that are not already included in the international migration flows from the IPS. Care must be taken when using these figures as they are **not** National Statistics, and as such they do not meet the stringent requirements made of National Statistics data. The data are only really fit for uses such as population modelling and understanding population change.

Other Changes

In addition to the migration and natural change components, the following form an 'other changes' group:

- Change in Armed Forces and Foreign Armed Forces (including foreign armed forces dependants)
- Change in boarding school pupils
- Change in prisoners
- Boundary change adjustment
- Reconciliation adjustment

Appendix B

GLA 2005 Round *Interim* Demographic Population Projections – Scenario 8.07

The Greater London Authority produces annual demographic projections at borough and ward level; the population data are broken down by single year of age and gender for each geographic area.

The 2005 Round projections in this *Briefing* update the 2003 Round Scenario 8.1 projections used in the *London Plan*. The key data used in the projections are as follows:

- The borough level base populations are the re-revised mid-2001 estimates, published in September 2003.
- Births, deaths and migration changes up to mid-2004 have been used. These are broadly consistent with the ONS mid-year estimates up to mid-2004.
- For the first time, 2001 Census migration age and gender structures were available and have been used in the model.
- Borough age-specific fertility rates and borough-group age/gender survival rates based upon the re-revised mid-2001 populations and the births and deaths occurring in the calendar years 2000-02 have been used as the basis for fertility and survival assumptions
- The Government Actuary's mid-2003 based assumptions for the future course of national fertility and survival rates have been followed
- The 2004 London Housing Capacity Study (LHCS) has been the main determinant of the population change in each of the London boroughs
- The 2001 Census borough level household representative rates have been used to set assumptions about the future course of average household size.

These projections are known as *Interim* as they have been produced on the same basis as the previous projections, that is borough level projections are linked to an assumed capacity based upon the 2004 LHCS and an estimate of average household size. The *Final* projections must await the availability of the ODPM 2003-based household projections in order to be able to use the projected trends in marital status and household representative rates that they incorporate in order to link population change with the planned growth in homes. The detailed ODPM household projections are due for the release in April 2006.

Appendix C

Vital Statistics 2004

Vital Statistics 2004 relate to events occurring in the resident population. Unless stated, all rates are calculated using ONS mid-2004 population estimates.

Definitions

Crude Birth/Death Rate

Crude Birth/Death Rates indicate the number of births/deaths per thousand resident population at mid-year.

General Fertility Rate

The General Fertility Rate is the number of live births per thousand resident women aged 15-44.

Total Period Fertility Rate (TPFR)

Total Period Fertility Rate indicates the average number of children that would be born to a woman if the current age-specific patterns of fertility persisted throughout her childbearing life. These data, for the boroughs and Inner, Outer and Greater London, were calculated by ONS based on the 2003 mid-year estimates. The TPFRs for the two other borough groups and the SRDFs were calculated by the GLA by weighting borough data according to the numbers of females aged 15 to 44 in the mid-2004 estimates.

Standardised Mortality Ratio (SMR)

Standardised Mortality Ratio indicates how the mortality of a given area compares with the national level, after allowing for differences in age structure.

The SMR represents total observed deaths as a percentage of expected deaths, which are calculated as the number that would occur if the population of the area experienced the age/sex mortality rates of England and Wales. Similar to the TPFRs the SMRs for the boroughs, Inner, Outer and Greater London were calculated by the ONS using the 2003 mid-year estimates. The SMRs for the remaining areas were calculated by the GLA by weighting borough data using the 2004 mid-year estimates for total population.

Expectation of life at birth

The ONS releases, on an annual basis, expectation of life at birth figures for local and health authorities, Government Office Regions and constituent countries of the UK. The most recent data refer to the period 2002-04. *DMAG Update 2005-13 Life expectancy at birth*, covering some of the key results, was produced shortly after the figures were released.

Appendix D

Households and Dwellings

Council Tax Dwellings

Council Tax Implied Total Dwellings on Valuation List, 2005

Each local authority submits annual returns to the Office of the Deputy Prime Minister (ODPM) relating to the number of properties on their valuation list as at November each year. The properties are categorised by the Tax Band (A to H) under several headings:

- Total Chargeable Dwellings
- Exempt Dwellings
- Dwellings Demolitions and Outside of Area of Authority
- Chargeable Dwellings with Disabled Relief
- Chargeable Dwellings with 25% discount
- Chargeable Dwellings with 50% discount
- Chargeable Dwellings with no discount
- 'Equivalent Dwellings'
- Band D Equivalent Dwellings

The data shown in the *Profiles* are for September 2005, with changes since October 2001, and relate to Total Chargeable Dwellings.

Housing Completions

London Development Database

The London Development Database (LDD) contains planning permission data back to 1987, most of which comes from previous systems and currently holds nearly 50,000 records. Only those permissions added since the LDD was introduced in April 2004 are guaranteed a full set of information – the data for both residential and non-residential developments includes information on number of bedrooms, tenure, floorspace – and every permission record holds an address, site area, grid reference and details of existing and proposed use. The LDD is designed to inform Mayoral policies in terms of how London is developing, and the information from it helps to measure progress on the *London Plan* against specific targets.

Appendix E

RPF29 Summary of Register of Electors, 2005 (October 2004), Population Estimate Unit, Office for National Statistics

The register of electors shows the number of local government electors for each local authority and parliamentary electors for each parliamentary constituency.

In this *Briefing*, data for the total number of local government electors is shown. This number includes residential qualifiers (see below), Peers, European Union citizens and attainers.

The 2005 figures are derived from data supplied to the Office for National Statistics by Electoral Registration Officers and show the number of people who on 1 December 2004 were registered to vote in local elections. These are based on a qualifying date of 15 October 2004.

To qualify as a resident, a person needs to be normally living at the address on the qualifying date, even if temporarily absent. People having more than one place of residence, such as students and those with second homes, may therefore be included on more than one register.

The term attainer is used to describe a person who attains the age of 18 during the currency of the register, and is entitled to vote at an election held on or after his or her eighteenth birthday.

Appendix F

Labour Force

Annual Population Survey (APS)

The APS is a new survey that replaces the annual Labour Force Survey (LFS). The APS collects a wide range of data about people and their labour market circumstances and is carried out by the ONS. While the APS is new in terms of its sample design, it has similar topic coverage and sample size (in the case of London) to the LFS.

The data presented in this *Briefing* are from the 2004 annual dataset, covering the period January to December 2004.

- Economic Activity – persons aged 16 and over who are in employment or are unemployed by the International Labour Organisation definition (see below).
- Employment – people aged 16 and over who did at least 1 hours' work in the reference week; those who had a job that they were temporarily away from; those on government supported training and employment programmes; and those doing unpaid family work.
- Unemployment – the International Labour Organisation's measure of unemployment refers to people without a job who were able to start work in two weeks following their LFS interview and who had either looked for work in the four weeks prior to interview or were waiting to start a job they had already obtained.
- Economic Inactivity – people neither in employment nor unemployed.
- Part-Time – this is generally classified on the basis of self-definition.
- Self-Employed – this is also classified on the basis of self-definition.

More detailed data, including breakdowns by disability, ethnicity and age, for London and the Government Office Regions are available in *DMAG Briefing 2005/34 Introducing the Annual Population Survey: Preliminary results from the 2004 APS for London*.

Appendix G

Benefits Claimants - Department of Work and Pensions

The data used in this *Briefing* refer to August 2005 and cover six main statistics;

- Income Support – this can be paid to a person who
 - is in Great Britain
 - is aged 16 or over
 - is not working 16 hours or more a week
 - has less money coming in than the law says they need to live on.

From October 1996, Jobseeker's Allowance replaced IS for unemployed people. In general Income Support is now only available to people who are not required to be available for work such as pensioners, lone parents and sick and disabled people. The rates are calculated using population aged 16+.

- Attendance Allowance – this is a benefit for people over the age of 65 who are so severely disabled, physically or mentally, that they need a great deal of help with personal care or supervision. They could need either frequent attention coping with their bodily functions or continual supervision to stop them hurting themselves or others. This could be either during the day or at night. The denominator for rates is the 65+ population.

- Disability Living Allowance is available for people who become disabled before the age of 65. It replaced and extended Attendance Allowance and Mobility Allowance. People who could not qualify for Mobility Allowance or Attendance Allowance can get the lower rates of Disability Living Allowance. Rates are calculated using total population as a denominator.

- Incapacity Benefit – this replaced Sickness and Invalidity Benefits from 13 April 1995. It is paid to people who are assessed as being incapable of work and who meet the appropriate contribution conditions. Rates are calculated using the working age population (16-64 for men and 16-59 for women) as a denominator.

- Jobseeker's Allowance (JSA) is a benefit for unemployed people or those working less than 16 hours a week and who are looking for full-time work. There are different types of JSA depending on whether claimants satisfy the National Insurance contributions conditions, pass the means test or are claiming as part of a couple. There are also strict criteria that must be met in respect of the claimant's labour market activity.

- Pension Credit was introduced in October 2003. It is an entitlement for people aged 60 and over living in Great Britain. Pension Credit has replaced the Minimum Income Guarantee (MIG). However, the principle of a guaranteed minimum income continues to apply. There are two parts to Pension Credit: the guarantee credit and the savings credit.

The guarantee credit provides financial help for people aged 60 or over whose income is below a certain level set by the law. The level that applies depends on individual circumstances; this is the standard, minimum guarantee. The awarded amount will depend on other sources of income, such as other pensions and savings. Extra amounts will be added to the standard minimum guarantee for those who have:

- relevant housing costs

- severe disabilities
- caring responsibilities

The savings credit is an extra amount for people aged 65 or over who have made some provision for their retirement (such as savings or a second pension) which brings their income above a level set by Parliament, called the 'savings credit threshold'. The aim is to reward pensioners who have modest income or savings. Claimants can get a savings credit on top of a guarantee credit. Claimants may still get a savings credit even if their income is above the standard minimum guarantee level.

A number of *DMAG Briefings* have been produced recently about these, and other, benefits:

DMAG Briefing 2005/20 Benefits 1: Income Support

DMAG Briefing 2005/28 Benefits 2: Incapacity Benefits and Severe Disability Allowance

DMAG Briefing 2005/37 Benefits 3: Children in Benefit Claiming Families

DMAG Briefing 2006/9 Benefits 4: Housing and Council Tax Benefits

Appendix H

Education Statistics

Statistics of Education Schools in England 2005 edition, Department of Education and Skills

The latest edition of "Statistics of Education Schools in England" includes school data for the academic year 2004/2005, which was collected in January 2005. The data relate to England and local authorities within England and **applies to the LEA of the school** rather than the residence of the pupil. The National Assembly for Wales collects their own statistics on schools and pupils in Wales; however these figures are not necessarily comparable with those from the Department for Education and Skills.

Most of the school information is from the Pupil Level Annual Schools' Census (PLASC), which was undertaken in January each year. In January 2002, for the first time, the Annual Schools' Census received individual pupil level data from maintained primary, secondary and special schools. In January 2003 pupil level data collection was expanded to include non-maintained special schools and academies. Whilst PLASC has been a very successful survey, it is possible that there is some discontinuity resulting from the change, though this is not thought to be significant.

Definitions

Nursery Schools

Nursery schools provide education primarily for children below compulsory school age (under 5).

Primary Schools

Primary schools consist mainly of infant schools for children aged 5 to 7, junior schools for those aged 7 to 11 and junior and infant schools for both age groups. Primary schools make provision for the youngest children of compulsory school age (5 and above), however, the majority of London schools also provide a reception class for pupils aged 4.

In addition, first schools cater for ages from 5 to 8, 9 or 10. They are the first stage of a three-tier (first, middle and secondary) school system. Many primary schools provide 'nursery' classes for under-fours. A 'nursery' class is one which includes amongst its staff a qualified nursery assistant.

Secondary Schools

Secondary education is provided mainly in three types of school, the comprehensive school, the secondary modern and the secondary grammar.

Schools which do not fall into any of these categories are classified as other schools. City Academies and City Technology Colleges (see following) which are publicly funded but registered as independent schools, fall into this category.

Special Schools

Special schools, both day and boarding, provide education for children with special educational needs who cannot be educated satisfactorily in an ordinary school.

Maintained special schools are run by local education authorities that pay all the expenses of maintenance.

Non-maintained special schools are run by voluntary bodies: they may receive some grant from the Department for capital work and for equipment, but their current expenditure is met primarily from the fees charged to the local education authorities for pupils placed in the schools.

Pupil Referral Unit

A Pupil Referral Unit is a centre for children of primary or secondary school age who have been temporarily withdrawn from mainstream provision.

Independent Schools

An independent school is legally defined as any institution providing full time education for five or more pupils of compulsory school age that is neither maintained by a local education authority nor a non-maintained special school. All independent schools are initially inspected by HMI from Ofsted. Just over half of all independent schools choose to belong to the professional associations constituting the Independent Schools Council (ISC).

City Technology Colleges and Academies

City Technology Colleges

These take the form of a charitable company limited by guarantee. The sponsors constitute an educational trust and will own or lease the college and appoint their representatives to the Board of Governors. The members of a CTC will consist of nominees of the sponsoring company and the Secretary of State. When the CTC is opened it will be registered as an independent school and is included in the independent schools tables.

Academies

These have been created more recently, but are essentially the same as CTCs with the same funding and status. However, while CTCs focus more on technology subjects, the Academies take a broader approach and tend to be found more in inner city areas.

Because of the similarities and relatively small numbers, City Technology Colleges and Academies have been grouped together.

Appendix I

Additional Data Sources

Data Management and Analysis Group (DMAG), GLA

In addition to demographic data, DMAG is also responsible for specific analysis on areas such as ethnicity, social exclusion, the 2001 Census and education. *DMAG Briefings* and analysis are available either direct from DMAG (see back cover for contact details), from individual London Boroughs, or via the GLA Extranet. The Extranet is a secure GLA website, which has limited access, and requires a password. Access to the Extranet may be granted on request. To apply for access to the Extranet, fill in the form found via the following link: <https://extranet.london.gov.uk/enquiry-form.jsp>.

GLAEconomics, GLA

Established in May 2002, GLAEconomics are responsible for assessing and monitoring the economic situation of London and providing economic analysis for policies and projects in areas such as transport, development and the environment.

Office for National Statistics (ONS) – <http://www.statistics.gov.uk>

The ONS is responsible for producing a wide variety of statistics, much of which is used in GLA analysis. Of particular interest, are;

- data from the Annual Population Survey (APS), a household survey with a UK sample of around 500,000 residents and 235,000 households. Analysis of APS data includes employment, unemployment, ethnicity, disability and qualifications.
- the Claimant Count, a count of people claiming Jobseeker's Allowance
- vital statistics – births and deaths
- electorate data
- earnings data from the New Earnings Survey, a 1% sample of employees in employment which collects information on hours worked and earnings from the employers. Self-employed earnings are not included
- 2001 Census
- population estimates and projections
- Neighbourhood Statistics

Office of the Deputy Prime Minister (ODPM) – <http://www.odpm.gov.uk>

This department is responsible for policy on housing, planning, devolution, regional and local government and the fire service.

Department for Education and Skills (DfES) – <http://www.dfes.gov.uk>

The DfES is the department responsible for schools and education, including funding, policy and compiling statistics.

Government Actuary's Department (GAD) – <http://www.gad.gov.uk>

This is a department of actuaries, advising the Government on issues affecting public policy in order to help ensure the financial stability of the state and private pensions systems. The department, since 1954, has also been responsible for producing the official population projections for the UK and constituent countries. Since January 2006 the demographic work of GAD has been absorbed into the National Statistics Centre for Demography based at ONS. At present the national population projections are still only available via the GAD website.

Department for Work and Pensions (DWP) – <http://www.dwp.gov.uk>

The remit of DWP is primarily welfare reform, for example, helping people back into work while supporting those unable to work through Jobcentre Plus; tackling child poverty; and assisting independence for the elderly. Statistics available from DWP mainly focus around benefits, such as Child Benefit, Jobseeker's Allowance, Incapacity Benefit and the New Deal.

Nomis – <http://www.nomisweb.co.uk>

Nomis is run by the University of Durham on behalf of the Office for National Statistics. It was launched in 1981 and makes available a vast range of labour market statistics, such as employment, unemployment, earnings, and claimant data. It has recently introduced profiles for each local authority in Great Britain, covering information such as population, labour supply and demand and the number of VAT registered businesses.

Regular Briefings from the GLA Data Management and Analysis Group

Recent *DMAG Briefings*:

DMAG 2005/34	Introducing the Annual Population Survey	Lorna Spence
DMAG 2005/35	Trends in Household Worklessness in London	Lorna Spence
DMAG 2005/36	Options. Improving the Evidence Base for School Places Planning	David Ewens
DMAG 2005/37	Benefits Data for London: No 3 Children in Benefit Claiming Families	Lovedeep Vaid
DMAG 2005/38	Patterns of Ethnic Segregation in London	Baljit Bains
DMAG 2005/39	London's changing population	Eileen Howes (editor)
DMAG 2005/40	GLA 2005 Round Interim Ward Population Projections	Georgia Hay
DMAG 2005/41	Statistics of Schools in London: Key Facts 2001-2005	Karen Osborne
DMAG 2005/42	Model-based income estimates (2001/02)	Lovedeep Vaid
DMAG 2005/43	Census Information Note 2005-2	Gareth Piggott
DMAG 2005/44	2001 Census: London County Report	Gareth Piggott
DMAG 2005/45	Greater London Demographic Review 2004	Demography Team
DMAG 2006/1	Census Information Note 2006-1	Eileen Howes
DMAG 2006/2	Simpson's diversity indices for wards 1991 and 2001	Gareth Piggott
DMAG 2006/3	2001 Census: The health of a diverse population	Gareth Piggott
DMAG 2006/4	London borough residents country of birth	Giorgio Finella
DMAG 2006/5	GLA Resident Labour Force Projections	John Hollis
DMAG 2006/6	Parents and Work in London	Lorna Spence
DMAG 2006/7	Claimant Count Model: Technical Note 2006	Lorna Spence/ Georgia Hay
DMAG 2006/8	Demography Team Workplan 2006-07	John Hollis
DMAG 2006/9	Benefits Data for London: No. 4: Housing and Council Tax Benefits	Lovedeep Vaid
DMAG 2006/10	Household Representative Rates: Technical Report	Georgia Hay
DMAG 2006/11	Borough and Sub-regional Demographic Profiles, 2006	Georgia Hay
DMAG 2006/12	Interim Household Projections	John Hollis/ Georgia Hay
DMAG 2006/13	Social Exclusion Team Workplan 2006-07	John Hollis
DMAG 2006/14	Benefits Data for London: No 5 Pension Benefits	Lovedeep Vaid
DMAG 2006/15	Census Information Note 2006-2	Giorgio Finella
DMAG 2006/16	2001 Census: Quality of origin-destination data	Eileen Howes/ Giorgio Finella/ Bill Armstrong

A full list of DMAG Briefings is available to internal customers through the GLA Intranet; otherwise please contact dmag.info@london.gov.uk A CD containing PDF versions of the Briefings, or hard copies, can be provided.

Contact details for the Data Management and Analysis Group are as follows:

Rob Lewis (020 7983 4652) is Head of the Data Management and Analysis Group. rob.lewis@london.gov.uk

Bill Armstrong (020 7983 4653) works in the **Census Team** with particular responsibilities for **commissioned tables, workplace data** and **mapping**. bill.armstrong@london.gov.uk

Baljit Bains (020 7983 4613) works in the **Demography Team** and is responsible for **ethnic demography**, including **ethnic group projections**. baljit.bains@london.gov.uk

Gareth Baker (020 7983 4965) works on **GIS and ICT** issues. gareth.baker@london.gov.uk

Shen Cheng (020 7983 4889) works in the **Education Team** and is responsible for **school roll projections**. shen.cheng@london.gov.uk

David Ewens (020 7983 4656) works in the **Education Team** and is responsible for **research and data analysis**. david.ewens@london.gov.uk

Giorgio Finella (020 7983 4328) works in the **Census Team**. giorgio.finella@london.gov.uk

Dennis Grenham (020 7983 4532) works on **statistical compendia, election statistics** and **special publications**. dennis.grenham@london.gov.uk

John Hollis (020 7983 4604) is responsible for the work of the **Demography, Education** and **Social Exclusion Teams**, and particularly for **demographic modelling**. john.hollis@london.gov.uk

Eileen Howes (020 7983 4657) is responsible for the work of the **Census, SASPAC** and **General Statistics Teams** and particularly for **census analysis**. eileen.howes@london.gov.uk

Ed Klodawski (020 7983 4694) works in the **Demography Team**. His post is joint with the **London Health Observatory** and specialises in **ethnic** and **health** issues. edmund.klodawski@london.gov.uk

Rachel Leeser (020 7983 4696) works in the **Social Exclusion Team** with particular responsibilities for **surveys, income data** and the **Social Exclusion Data Users Group**. rachel.leeser@london.gov.uk

Alan Lewis (020 7983 4348) works on the **SASPAC** project. alan.lewis@london.gov.uk

Gareth Piggott (020 7983 4327) works in the **Census Team**. gareth.piggott@london.gov.uk

Lorna Spence (020 7983 4658) is a member of the **Social Exclusion Team**, with particular responsibilities for **labour market data**. lorna.spence@london.gov.uk

Lovedeep Vaid (020 7983 4699) works in the **Social Exclusion Team** with particular responsibilities for **benefits, indicators, income data** and the **Social Exclusion Extranet**. lovedeep.vaid@london.gov.uk

Please use the above descriptions in deciding whom to contact to assist you with your information needs.