

## Data Management and Analysis Group

# GLA 2006 Round Demographic Projections



# **DMAG Briefing 2006/32**

**December 2006**

## **GLA 2006 Round Demographic Projections**

For more information please contact:

**John Hollis**

Data Management and Analysis Group  
Greater London Authority  
City Hall (5 East)  
The Queen's Walk  
London SE1 2AA

Tel: 020 7983 4604  
John.hollis@london.gov.uk

Copyright © Greater London Authority, 2006

**Mid-year Estimates**

ONS mid-year population estimates are  
© Crown Copyright.

Data presented in this Briefing are available in  
other formats on request.

ISSN 1479-7879



# GLA 2006 Round Demographic Projections

## Contents

Executive Summary	1
Background	3
Data used in the Projections	4
The RLP Low Projection	7
The RLP High Projection	10
Projections and the Review of London Plan	12
Appendix Tables and Charts	13
Access to Data	22



## Executive Summary

The 2006 Round Demographic Projections update those published as the 2005 Round Scenario 8.07 (*DMAG Briefings 2004/33 and 2005/40*).

The new projections differ from their predecessor projections in a number of key ways, in particular:

- The projections recognise actual births and deaths up to mid-2005 as in the Office for National Statistics (ONS) population estimates for mid-2005.
- The Government Actuary's Department's (GAD) mid-2004 based assumptions for the future course of national fertility and survival rates have been followed.
- The 2004 London Housing Capacity Study (LHCS), as updated in 2006 for the period 2017-27, has been the main determinant of the population distribution amongst the London boroughs.
- The Department for Communities and Local Government's (DCLG) 2003-based household projections, particularly as regards the proportion of the population resident in communal establishments, the marital status distribution and household representative rates, have been used to establish borough household and population totals based on the growth in homes as shown by the London Development Database (LDD) between 2001 and 2006 and as shown by the LHCS thereafter.

Two projections have been prepared:

- The first, referred to as Review of the London Plan (RLP) Low, is entirely driven by the increase in homes as seen annually since mid-2001 from data collected at borough level by the LDD up to 2006 and the LHCS from 2006 to 2027. After 2027 it is assumed that the LHCS average values for 2017 to 2027 continue until 2031.
- The second projection, RLP High, was prepared to establish the impact on London of the Government Actuary's Department's (GAD) 2004-based population projection for the United Kingdom. Apart from following the trends in fertility rates and improved survival, the RLP High assumes that London's proportion of UK international migration inflows and outflows for the calendar years 1999 to 2004 will continue. The distribution of London's population amongst the boroughs is then determined by the distribution of the RLP Low projection.

The main results of the RLP Low projection are that:

- The population in 2006 is estimated to be 7.47 million, with growth of 788 thousand to a 2026 total of 8.26 million.
- Over the same period the number of households rises by 546 thousand from 3.15 million in 2006 to 3.70 million in 2026.
- The majority of the increase in households (430 thousand) will be formed by one-person households, with most of these individuals being aged between 35 and 69.
- Average household size is projected to fall from 2.34 persons in 2006 to 2.21 in 2026.

- Married couple households are expected to continue their long-term decline, falling by 225 thousand to just 802 thousand in 2026. Much of the decline is taken up by the projected 192 thousand increase in cohabiting couples, which are expected to reach 518 thousand in 2026.
- As a consequence of the LHCS distribution of future homes significantly higher growth is projected for the North East Subregion. The North East is expected to have 31 per cent of new homes, which translates to 35 per cent of the population growth.
- Net migration between 2006 and 2026 amounts to a loss from London of 585 thousand, equivalent to 29.3 thousand a year.

The main results of the RLP High projection are that:

- The population in 2006 is estimated to be 7.57 million, with growth of 1.14 million to a 2026 total of 8.71 million. This result is very close to the ONS 2004-based subnational projection for London, but there are significant age and gender differences between the two projections.
- The migration-led increase in population implies that over the same period the number of households would be expected to rise by 720 thousand from 3.20 million in 2006 to 3.92 million in 2026.
- The majority of the increase in households (504 thousand) would be formed by one-person households.
- Average household size is projected to fall from 2.34 persons in 2006 to 2.20 in 2026.
- Married couple households are expected to decline, falling by 192 thousand, while cohabiting couples increase by 219 thousand.
- Net migration between 2006 and 2026 amounts to a loss from London of 267 thousand, equivalent to 13.4 thousand a year.

While at 2026 the new projection shows growth of 1.14 million (15%) since 2006 there are some significant changes in age structure:

- 170 thousand more children aged 0-14
- 18 thousand more persons aged 15-29
- 379 thousand more persons aged 30-49
- 290 thousand more persons aged 50-59
- 220 thousand more persons aged 60-74
- 62 thousand more persons over 75.

The age structure changes amongst adults mainly reflect the relative sizes of past birth cohorts and the population structure of London as recorded at the 2001 Census. The age structures of the migration flows into and out of London fine-tune the changes.

It is recommended that the RLP High projection be used for longer-term population change, but that in the short term RLP Low may be closer to changes that have happened in London since 2001. The current ONS review of international migration and mid-year estimates is likely to show change akin to RLP Low up to 2006 but, as recent international migration to the UK has been well above the GAD 2004-based projection, RLP High is likely to be more accurate as regards change in the longer term.

## Background

These projections have been produced as background for the *Review (Further Alterations) of the London Plan*. Summaries have been published in *Draft Further Alterations to the London Plan* (GLA, September 2006) and the detailed results are already being used by GLA Economics and Transport for London in work leading up to the London Plan Examination in Public.

The 2005 Round projections were considered to be *Interim* as they had been prepared on the basis that the borough level projections were linked to an assumed capacity based upon the 2005 LHCS and an estimate of future average household size. It was stated that *Final* projections would await the availability of the ODPM 2003-based household projections in order to be able to use the projected trends in marital status and household representative rates that they incorporate to link population change with the planned growth in homes. The ODPM (now DCLG) household projections became available from March 2006. Fully detailed results for boroughs became available in Summer 2006 and these have been used in the 2006 Round of GLA demographic projections.

The 2005 Round of GLA projections were prepared in advance of the Government Actuary's Department's (GAD) 2004-based national projections. Early in 2006, as part of a project that looked at the risks inherent in assumptions supporting the *London Plan* it was decided to prepare a projection for London that emulated the GAD assumptions for the UK in terms of fertility trends, survivorship improvement and international migration levels. This projection assumed that London would continue to receive/supply the same proportions of the UK international in and outflows as for the five-year period from 1999 to 2003. This projection has subsequently been adopted as the High projection for London (RLP High) for use in the *Review (Further Alterations) of the London Plan*.

The RLP Low projection has been developed using the same three migration-led projections that were used in the construction of the 2005 Round Scenario 8.07 projection, but with the full use of development data and the DCLG 2003-based household projections to steer the projection results between the three migration-led projections.

This *Briefing* gives details of all the data incorporated in the projections, the assumptions made and the key results.

## **Data used in the Projections**

### ***Base Population***

The model runs from mid-2001 as its starting point. It uses the re-revised ONS mid-2001 population estimates by single years of age (0 to 90+) and gender published in September 2004. ONS has also published estimates for mid-2002, mid-2003, mid-2004 and mid-2005. These estimates are not used directly, but the associated change analyses provide the annual birth and death totals that are used in the model.

The total population estimates made by ONS since mid-2001 for London were initially assumed to be robust. However, the distribution of the London population between some of the boroughs is questionable, as acknowledged by ONS (see *DMAG Demography Update 2004/05*). GLA has therefore used its own adjusted estimates at borough level. This means that in the migration-led projections that support the final RLP Low and High projections, borough level international migration inflows for 2001-02-03-04 were adjusted to accommodate these revisions. The migration-led projections therefore 'pass through' fixed borough total population totals for 2002, 2003 and 2004 that are of GLA's making but which are consistent with ONS estimates for London as a whole.

The private household population is the basis for the projection of households. To establish the household population the DCLG assumptions about the communal establishment population have been used. In creating their household projections DCLG assume that up to age 74 the numbers of people resident in communal establishments in each borough is constant at levels seen in the 2001 Census. For older ages the assumption is that the proportion of the population resident in communal establishments is constant.

Within the household projection part of the model the private household population in each borough is split into four marital statuses (married, divorced, widowed and single) for each gender by five-year age groups (15-19 to 84-89 and 85+) for years 2001, 2006, 2011, 2016, 2021 and 2026. This is done using the detailed results of the DCLG 2003-based household projection.

### ***Fertility***

GLA has produced an analysis of age-specific fertility rates in each borough covering data for the calendar years 2000 to 2002 (see *DMAG Briefing 2005/09*). These rates have been used in the model as the basis for future birth projections. Actual births up to mid-2005 have been incorporated at borough level. Future changes in age-specific fertility follow the Government Actuary's 2004-based projection for England.

### ***Mortality/Survival***

GLA has also produced an analysis of the age-specific mortality rates (by gender) in each borough group (Central, Rest of Inner and Outer) covering data for the calendar years 2000 to 2002 (see *DMAG Briefing 2005/10*). These rates have been used in the model as the basis for future survival probabilities and, therefore, the projections of numbers of deaths. Borough level survival adjustments (ie differences from the borough group norm) are based upon actual deaths in each borough since mid-2001 up to mid-

2005. Future changes in age-specific survival follow the Government Actuary's 2004-based 40-year survival improvement factors for England.

### ***2001-02 Migration Matrix***

The initial migration matrix of total moves between each borough and to/from each borough with the Government Office East (GOEast) Region, the Government Office South East (GOSE) Region, the Rest of the UK and Overseas has been created using ONS data based on NHS patient moves and the International Passenger Survey together with Home Office data on asylum seekers and visitor switchers. These data are consistent with the mid-year estimate changes for 2001-02. However the international inflows and the resulting net flows have been adjusted to accommodate GLA preferred borough estimates for 2002, as mentioned above.

### ***Migration Flow Age Structures***

All age and gender structures of migration flows are based upon data from the 2001 Census.

Inflows to each borough group from GOEast, GOSE, the Rest of the UK and Overseas are assumed to continue to have the same structures throughout the projection period, ie the proportion of each flow assigned to a single year of age/gender is assumed to be constant from 2001-02 throughout the projection.

Outflow probabilities, based upon 2001 Census data, for moves from each borough group to all borough groups (including moves within the same group) plus to GOEast, GOSE and the Rest of the UK and Overseas are assumed to continue throughout the projection period, ie the same proportion of a single year of age/gender population resident in the origin area is assumed to move to the destination area in each year.

Individual borough weights are applied to the probabilities in order that the projection matches the borough-to-borough matrix in 2001-02 and the required borough net migration levels in each year up to 2004-05. The weights are adjusted in each year to achieve the required matches. The probabilities and the associated borough weights remain unchanged in the migration-led projections after 2004-05.

### ***2002-03 and 2003-04 Gross Inflows from Outside London and Net Flows***

As with the initial matrix the gross inflows to each borough from GOEast Region, GOSE Region, the Rest of the UK and Overseas have been created using ONS data based on NHS patient moves and the International Passenger Survey together with Home Office data on asylum seekers and visitor switchers. For London these data are consistent with the mid-year estimate changes for 2002-03-04. However the international inflows and the net flows have been adjusted to accommodate GLA preferred borough estimates for 2003 and 2004, as mentioned above.

### ***2004-05 Gross Inflows from Outside London and Net Flows***

Data for 2004-05 were used for flows within the UK. Inflows from Overseas are based upon the annual average of years 1999-04. 2004-05 is the base year for variant assumptions about future net migration levels. The assumed net flows have been based upon an analysis of data for 1999-2004.

### ***Development data***

The three 2005 Round variant migration projections have been used to create the RLP Low projection by linking to the borough results of the London Development Database (LDD) and the 2004 London Housing Capacity Study (LHCS). The data from the LDD has been used for 2001-06 and the LHCS has been used for 2006-27. The version of the LHCS being used includes revisions made in Summer 2006 that significantly increase the numbers of new homes expected to be provided in each borough after 2017. The average annual values for 2017-27 have been used to extend the projection to 2031.

### ***Household Representative Rates***

The results of the DCLG 2003-based borough household projections provide the final inputs to the projections. The private household population by age, gender and marital status is linked to numbers of households by the application of household representative rates (ie the proportions of each population subgroup that 'represents' a household). By convention, only married males represent married couples and only males represent a cohabiting couple. All other population subgroups may represent a lone parent household, a one-person household or an 'other' household formed of two or more adults with no family.

## The RLP Low Projection

The RLP Low projection is a hybrid of the three migration-led projections (Central, Low and High) prepared for the 2005 Round. These three projections are described in detail in *DMAG Briefing 2005/33*. The RLP Low projections are initially prepared for each individual borough as described below.

### *Method*

1 The DCLG 2003-based household projections were converted into borough level models such that when a new population by gender and five year age groups is put into the model all of the relationships (population not in private households, marital status of household population, household representative rates) are applied. This results in a projection of households by type for every fifth year and enables the calculation of the average household size and the proportion of total population not resident in households.

2 The **2005 Round Scenario 8.07 population projection** (see *DMAG Briefing 2005/40*) was put into the DCLG 'model' and for 2001, 2006, 2011, 2016, 2021 and 2026 the **total households (2001 only)**, **average household size** and **proportion of the total population not in private households** were extracted from the results. The values of average household size and proportion of the population not in private households were interpolated to establish values for intervening years and the 2026 values were extended unchanged to 2031.

3 The LDD and LHCS numbers of additional homes for each year were added to the number of households in 2001 to establish **total households in each year**.

4 The number of households was multiplied by the average household size to establish the **total household population**. This population was grossed-up, using the proportion of the total population not in private households, to get the **total population**. This gives the first estimate of total population capacity for each year.

5 The annual population totals were then introduced to a module that contains the full single year of age results of the 2005 Round High, Central and Low projections. The module produces a 'weighted average' **population by single years of age and gender** by comparing the total population each year with the two adjacent fully developed projections (ie Central and High or Central and Low).

6 Return to Stage 2 (above) and introduce the newly created population by age and gender to the model.

7 Go through Stages 3 to 5 (above) and then repeat Stages 2 to 6 until the projection shows that the increase in households in each five-year period matches the increase in homes from the LDD and LHCS. The projection is now complete in terms of **population by age and gender** as well as **households by type and by age, gender and marital status of the household representative**.

8 The borough populations are then introduced to the resident labour force module to create projections of the **economically active population** for each year by age groups and gender. This module links the ONS national projection of economic

activity rates by age/gender (see *Labour Market Trends*, January 2006) to the borough economic activity rates as at the 2001 Census.

### **Results for London**

Before reviewing the results note should be taken of the significant inputs to the calculations. The LDD shows an increase in homes of 118 thousand between 2001 and 2006. In the next four five-year periods the LHCS implies the following numbers of additional homes:

2006-11	171 thousand
2011-16	139 thousand
2016-21	119 thousand
2021-26	117 thousand

This is a grand sum of 546 thousand additional homes (ie 27,300 per year) from 2006 to 2026 and is reflected directly in the population and household projection.

**Table 1: RLP Low: Key results for Greater London**

(000's)	2001	2006	2011	2016	2021	2026	2006-26 Change
<b>Total Population:</b>	7322.4	7469.0	7747.1	7940.9	8101.4	8257.3	788.3
<b>Economically Active</b>	3642.6	3819.0	4016.8	4140.1	4225.5	4278.3	459.3
<b>Communal Population</b>	93.6	93.0	93.4	93.8	94.5	96.5	3.5
<b>Household Population</b>	7228.8	7376.0	7653.7	7847.1	8006.8	8160.8	784.8
<b>Households:</b>	3036.1	3154.3	3325.6	3464.5	3583.6	3700.5	546.2
<b>Married Couples</b>	1115.7	1027.2	958.2	894.2	842.3	802.3	-224.8
<b>Cohabiting Couples</b>	261.7	325.3	392.9	442.3	481.8	517.5	192.2
<b>Lone Parents</b>	274.6	313.4	348.9	373.6	387.9	397.0	83.6
<b>Other</b>	332.1	343.0	361.4	378.0	393.0	408.2	65.2
<b>One-person</b>	1052.0	1145.4	1264.2	1376.5	1478.6	1575.4	430.0
<b>Average Household Size</b>	2.381	2.338	2.301	2.265	2.234	2.205	-0.133

Table 1 shows the total population rising by 788 thousand between 2006 and 2026 with the number of households increasing by 546 thousand. Significant changes are projected for household structure, with a reduction of 225 thousand married couples being partly offset by a rise of 192 thousand cohabiting couples. Most of the household increase (430 thousand) will be one-person households with 84 thousand more lone parents and 65 thousand more other (ie multi-person non-family) households.

The increase in one-person households is concentrated in the 'middle ages' (35-69 particularly 45-54) where 419 thousand of the increase occurs. 245 thousand of this growth is male one-person households. Reductions in one-person households are projected at younger ages and for females over age 70. These changes are consistent with reduced likelihood of marriage, more divorce and better male survival at older ages leading to reduced widowhood. Most of the older single male one-person households will be former cohabiters. These men may well have children living with former partners and their housing requirements will be more akin to divorcees of a similar age.

The resident labour force is projected to grow by 459 thousand from 3.82 million in 2006 to 4.28 million in 2026.

The RLP Low projection implies a significantly lower population at mid-2005 than does the ONS mid-2005 estimate. The comparison is 7.44 million with 7.52 million, a difference of 82 thousand, or just over 20 thousand a year. ONS is at present reviewing its methods of estimating local populations and in particular is reviewing the way international migration is distributed to local authorities. The results of this exercise are not expected before Spring 2007, but the indications are that using the 'address one-year ago' question in the Labour Force Survey to re-assign international migration amongst the countries of the UK and the English regions will result in a reduced share being assigned to London. It is quite feasible that the RLP Low figure for London is relatively close to the revised ONS mid-2005 estimate due to be published in August 2007. Therefore the RLP Low figures are a good guide to recent and short-term future change in London.

While the results of the RLP Low projection create a freestanding projection they are also critical to the RLP High projection. This relationship is explained in the next section.

## The RLP High Projection

The RLP High projection is the central of three projections that were prepared as part of a project – known as *Scenarios* – that looked at risks in the supporting data for the *London Plan*. Consultants were employed to look at various aspects of the data. DMAG worked with the consultants on a range of alternative population projections for London that were built around the GAD 2004-based national projections. Apart from GAD's central assumption, high and low variants were prepared for fertility, mortality and international migration. DMAG's three projection based on the GAD work were:

Central	GAD Central Fertility Rate and Survivorship trends GAD Central International Migration Flows with London/UK proportions constant
Low	GAD Low Fertility Rate and Central Survivorship trends GAD Low International Migration Flows with London/UK proportions constant
High	GAD High Fertility Rate and Central Survivorship trends GAD High International Migration Flows with London/UK proportions constant

Only the GLA Central variant has been used subsequently, but the Low and High variants are available on request.

The key variable in the GLA Central projection was that London was assumed to continue to have the same proportions of UK international inflows (41.4%) and Outflows (31.0%) throughout the projection from 2004 to 2031. These values were based on the proportions over the five calendar years 1999 to 2003.

For London the *Scenarios* Central projection has been adopted as RLP High, but the distribution amongst the boroughs has been amended as follows.

### **Method**

- 1 The RLP Low population projections were grossed up at single years of age and gender for all years from 2002 to 2031 to match, in sum, the population previously projected for London in the *Scenarios* Central (RLP High) projection.
- 2 The borough level RLP High population projections were then put into the DCLG 'model' to create at 2001, 2006, 2011, 2016, 2021 and 2026 full household projections.
- 3 The borough populations are then introduced to the resident labour force module to create projections of the economically active population for each year by age groups and gender.

### **Results for London**

Table 2 shows London's population growing – under the influence of recent migration trends and a national long term annual forecast of 130 thousand net international

migrants to the UK – by 1.14 million to 8.71 million between 2006 and 2026 – nearly 57 thousand a year. This is consistent with an increase of 720 thousand households over the 20 years, ie 36 thousand a year.

The structure of household change is similar to the RLP Low projection, but with more households in all categories and similar age structure changes.

As the original *Scenarios* projection was based upon recent migration trends it has a different 2006 population to the RLP Low projection that is based on new homes. Hence the 2006 RLP High population is higher than RLP Low by 103 thousand and the implied number of households is also higher by 42 thousand.

The resident labour force is projected to grow from 3.88 million in 2006 to 4.54 million in 2026.

**Table 2: RLP High: Key results for Greater London**

(000's)	2001	2006	2011	2016	2021	2026	2006-26 Change
<b>Total Population:</b>	7322.4	7571.9	7894.6	8193.0	8467.3	8710.3	1138.4
<b>Economically Active</b>	3642.6	3882.4	4109.9	4294.9	4444.4	4543.5	661.1
<b>Communal Population</b>	93.6	93.1	93.6	94.1	95.1	97.2	4.1
<b>Household Population</b>	7228.8	7478.8	7801.0	8099.0	8372.3	8613.1	1134.3
<b>Households:</b>	3036.1	3196.3	3388.6	3578.5	3754.0	3915.9	719.5
<b>Married Couples</b>	1115.7	1039.1	973.8	920.8	880.0	847.5	-191.6
<b>Cohabiting Couples</b>	261.7	331.6	403.2	460.3	508.1	550.5	218.9
<b>Lone Parents</b>	274.6	318.4	357.3	389.1	410.6	424.2	105.8
<b>Other</b>	332.1	348.2	368.8	390.3	410.7	430.4	82.2
<b>One-person</b>	1052.0	1159.0	1285.6	1418.0	1544.7	1663.3	504.2
<b>Average Household Size</b>	2.381	2.340	2.302	2.263	2.230	2.200	-0.140

Given the relationship to the latest GAD assumptions about long-term international migration flows RLP High should be a good guide to the longer-term trends for London. While it is expected that recent ONS mid-year estimates for London will be revised down during 2007 by reducing the proportion of the international inflow that is seen as coming to London, it is also clear that recent levels of international migration to the UK have been significantly greater than the GAD assumption of 130 thousand per year. In 2004 the net inflow was 223 thousand and in 2005 it was 185 thousand. Therefore RLP High may better reflect projected changes to be expected in the 2006-based national population projections at are due to be released by ONS in October 2007.

## Projections and the Review of the London Plan

RLP High is the main population projection adopted for use in the present *Review (Further Alterations) of the London Plan*, given that it is based upon the latest national assumptions regarding international migration. However, a variant of the household projection has also been adopted. The variant holds household representative rates at 2006 levels. This constrains the growth in households to 682 thousand over the twenty years, a reduction of 45 thousand.

A variant of RLP Low is also being used. This variant has the same growth between 2006 and 2026, but the 2006 base has been adjusted to be made consistent with the 2006 results of RLP High.

These projections are not fully developed at borough level. The main London results of these revisions as are shown below.

**Table 3: London Plan Projections: Key results for Greater London**

		<b>RLP Low Original</b>	<b>RLP Low Adjusted</b>	<b>RLP High Original</b>	<b>RLP High Constrained</b>
	<b>Millions</b>				
<b>2006</b>	<b>Population</b>	7.468	7.572	7.572	7.572
	<b>Households</b>	3.154	3.196	3.196	3.196
<b>2026</b>	<b>Population</b>	8.257	8.360	8.710	8.710
	<b>Households</b>	3.700	3.743	3.924	3.879
	<b>Thousands</b>				
<b>Annual Growth</b>	<b>Population</b>	39.4	39.4	56.9	56.9
	<b>Households</b>	27.3	27.3	36.4	34.1

## Appendix Tables and Charts

The following six tables show the RLP Low and RLP High projections for boroughs, borough groups and London Plan subregions.

In the population (RLP Low only) and household tables there are two rows for Greater London results. Data labelled 'Greater London' are the sums of the individual borough projections. Data labelled 'GL (Independent)' were produced by putting Greater London data through the household module.

The independent results are assumed to be more robust as the Greater London results from the DCLG household projections are the constraints for the borough results. However, the results of the sums of the boroughs and the independent calculations are very similar.

The labour force projections have just one set of figures for Greater London as the module operates only at borough level.

The Charts demonstrate four different aspects of the projections for London:

- Comparisons with Scenario 8.07
- Components of Change (RLP High)
- Age Structure (RLP High)
- Households by Type (RLP High)

**Table A1: RLP Low: Population by boroughs and groupings**

(000s)	2001	2006	2011	2016	2021	2026
<b>Camden</b>	202.6	202.2	206.4	211.5	220.0	228.9
<b>Kensington and Chelsea</b>	162.2	167.2	172.6	176.3	179.0	181.5
<b>Westminster, City of</b>	203.3	212.7	221.1	227.2	232.2	236.5
<b>City of London</b>	7.4	9.2	10.8	12.3	13.0	13.6
<b>Central boroughs</b>	<b>575.5</b>	<b>591.3</b>	<b>611.0</b>	<b>627.3</b>	<b>644.2</b>	<b>660.6</b>
<b>Hackney</b>	207.2	215.0	224.5	233.5	242.2	250.5
<b>Hammersmith and Fulham</b>	169.4	174.8	181.0	183.0	186.9	191.3
<b>Haringey</b>	221.3	225.2	233.4	235.9	242.7	250.4
<b>Islington</b>	179.4	187.9	200.8	208.2	216.1	224.1
<b>Lambeth</b>	273.4	279.5	289.8	299.2	309.0	318.6
<b>Lewisham</b>	254.3	257.0	265.0	271.7	275.5	278.9
<b>Newham</b>	249.4	256.3	289.5	317.9	331.0	341.7
<b>Southwark</b>	256.7	265.1	280.7	292.7	307.1	321.7
<b>Tower Hamlets</b>	201.1	219.9	255.8	277.9	294.8	310.8
<b>Wandsworth</b>	271.7	281.9	291.4	294.5	299.1	304.1
<b>Rest of Inner</b>	<b>2283.9</b>	<b>2362.7</b>	<b>2511.8</b>	<b>2614.6</b>	<b>2704.5</b>	<b>2792.1</b>
<b>Inner London</b>	<b>2859.4</b>	<b>2954.0</b>	<b>3122.8</b>	<b>3241.9</b>	<b>3348.7</b>	<b>3452.7</b>
<b>Barking and Dagenham</b>	165.7	166.9	177.6	186.2	201.6	218.7
<b>Barnet</b>	319.5	324.5	343.9	356.1	361.4	365.7
<b>Bexley</b>	218.8	215.3	213.7	214.7	216.5	218.6
<b>Brent</b>	269.6	273.2	285.6	293.4	297.0	299.9
<b>Bromley</b>	296.2	300.4	304.0	305.4	307.8	311.1
<b>Croydon</b>	335.1	332.9	338.2	342.0	342.0	341.8
<b>Ealing</b>	307.3	308.1	313.0	320.8	325.3	328.4
<b>Enfield</b>	277.3	284.4	285.5	285.0	286.3	287.9
<b>Greenwich</b>	217.5	230.9	256.6	268.2	274.0	279.5
<b>Harrow</b>	210.0	214.1	218.9	219.5	219.3	218.8
<b>Havering</b>	224.7	226.1	230.9	232.3	233.7	235.5
<b>Hillingdon</b>	245.6	244.9	244.4	245.5	247.1	248.7
<b>Hounslow</b>	216.0	219.8	222.5	224.9	227.4	229.5
<b>Kingston upon Thames</b>	149.0	151.9	155.7	159.0	160.1	160.7
<b>Merton</b>	191.1	192.4	194.3	193.6	193.7	194.4
<b>Redbridge</b>	241.9	245.9	251.3	262.5	265.6	266.4
<b>Richmond upon Thames</b>	174.3	179.8	182.4	182.6	183.5	184.9
<b>Sutton</b>	181.5	180.8	181.4	181.1	181.3	181.9
<b>Waltham Forest</b>	222.0	221.8	225.4	228.4	230.1	231.5
<b>Outer London</b>	<b>4463.0</b>	<b>4514.1</b>	<b>4625.4</b>	<b>4701.1</b>	<b>4753.7</b>	<b>4803.9</b>
<b>GREATER LONDON</b>	<b>7322.4</b>	<b>7468.1</b>	<b>7748.2</b>	<b>7943.0</b>	<b>8102.4</b>	<b>8256.6</b>
<b>GL (Independent)</b>	<b>7322.4</b>	<b>7469.0</b>	<b>7747.1</b>	<b>7940.9</b>	<b>8101.4</b>	<b>8257.3</b>
<b>London Plan Sectors:</b>						
<b>North</b>	<b>1610.5</b>	<b>1651.9</b>	<b>1715.6</b>	<b>1757.4</b>	<b>1800.9</b>	<b>1843.9</b>
<b>North East</b>	<b>1312.1</b>	<b>1346.0</b>	<b>1441.3</b>	<b>1517.6</b>	<b>1569.9</b>	<b>1618.3</b>
<b>South East</b>	<b>1243.5</b>	<b>1268.8</b>	<b>1320.0</b>	<b>1352.7</b>	<b>1380.8</b>	<b>1409.8</b>
<b>South West</b>	<b>1576.1</b>	<b>1599.3</b>	<b>1633.3</b>	<b>1652.0</b>	<b>1668.8</b>	<b>1686.5</b>
<b>West</b>	<b>1580.1</b>	<b>1602.1</b>	<b>1638.0</b>	<b>1663.5</b>	<b>1682.0</b>	<b>1698.1</b>

**Table A2: RLP Low: Households by boroughs and groupings**

(000s)	2001	2006	2011	2016	2021	2026
<b>Camden</b>	91.7	94.8	97.6	100.7	105.4	110.6
<b>Kensington and Chelsea</b>	79.3	81.0	82.8	84.5	86.0	87.6
<b>Westminster, City of</b>	100.0	104.7	108.4	111.6	114.9	118.1
<b>City of London</b>	4.3	5.2	6.1	6.9	7.4	7.8
<b>Central boroughs</b>	<b>275.4</b>	<b>285.6</b>	<b>294.8</b>	<b>303.7</b>	<b>313.7</b>	<b>324.1</b>
<b>Hackney</b>	86.1	90.9	96.3	101.6	106.5	111.4
<b>Hammersmith and Fulham</b>	75.6	77.6	80.7	82.3	84.8	87.7
<b>Haringey</b>	92.2	94.3	99.1	101.2	105.0	109.5
<b>Islington</b>	82.3	87.6	95.0	99.7	104.4	109.3
<b>Lambeth</b>	118.7	122.5	128.3	134.1	140.0	145.9
<b>Lewisham</b>	107.6	111.0	116.8	122.1	125.4	128.1
<b>Newham</b>	91.6	98.2	115.4	131.0	139.6	146.7
<b>Southwark</b>	109.2	114.7	123.5	131.0	139.6	148.6
<b>Tower Hamlets</b>	78.7	90.5	109.9	123.2	133.4	143.2
<b>Wandsworth</b>	119.4	124.9	130.4	133.4	137.2	141.4
<b>Rest of Inner</b>	<b>961.4</b>	<b>1012.3</b>	<b>1095.5</b>	<b>1159.5</b>	<b>1215.8</b>	<b>1271.8</b>
<b>Inner London</b>	<b>1236.8</b>	<b>1297.9</b>	<b>1390.4</b>	<b>1463.2</b>	<b>1529.6</b>	<b>1595.9</b>
<b>Barking and Dagenham</b>	67.2	69.8	75.9	81.4	89.8	99.0
<b>Barnet</b>	127.0	132.0	142.4	150.6	155.6	160.0
<b>Bexley</b>	89.7	90.5	91.8	93.8	95.7	97.6
<b>Brent</b>	100.3	104.0	111.0	116.6	120.2	123.5
<b>Bromley</b>	126.1	129.1	132.2	134.4	136.9	139.5
<b>Croydon</b>	139.0	142.9	148.8	153.8	156.7	159.1
<b>Ealing</b>	118.1	120.7	124.3	129.6	133.5	136.9
<b>Enfield</b>	110.6	114.8	117.2	119.0	121.1	123.4
<b>Greenwich</b>	93.0	101.4	114.3	121.8	126.4	130.8
<b>Harrow</b>	79.5	81.8	84.7	86.1	87.2	88.3
<b>Havering</b>	91.9	93.7	97.2	99.1	100.5	101.9
<b>Hillingdon</b>	96.8	98.8	100.4	102.3	104.2	106.0
<b>Hounslow</b>	84.1	86.9	89.2	91.5	93.8	96.1
<b>Kingston upon Thames</b>	61.5	63.8	66.1	68.3	69.7	70.8
<b>Merton</b>	79.0	81.1	83.5	84.9	86.4	88.1
<b>Redbridge</b>	92.5	95.5	99.3	105.6	108.4	110.3
<b>Richmond upon Thames</b>	76.3	78.8	80.7	81.8	83.3	84.9
<b>Sutton</b>	76.5	78.2	80.3	81.7	83.0	84.2
<b>Waltham Forest</b>	89.9	92.1	95.7	99.0	101.4	103.7
<b>Outer London</b>	<b>1799.1</b>	<b>1856.1</b>	<b>1935.0</b>	<b>2001.1</b>	<b>2053.8</b>	<b>2104.3</b>
<b>GREATER LONDON</b>	<b>3035.9</b>	<b>3154.0</b>	<b>3325.3</b>	<b>3464.3</b>	<b>3583.4</b>	<b>3700.2</b>
<b>GL (Independent)</b>	<b>3036.1</b>	<b>3154.3</b>	<b>3325.6</b>	<b>3464.5</b>	<b>3583.6</b>	<b>3700.5</b>
<b>London Plan Sectors:</b>						
<b>North</b>	<b>689.9</b>	<b>719.1</b>	<b>756.1</b>	<b>784.3</b>	<b>812.9</b>	<b>842.3</b>
<b>North East</b>	<b>516.1</b>	<b>545.1</b>	<b>599.3</b>	<b>646.1</b>	<b>680.5</b>	<b>712.7</b>
<b>South East</b>	<b>525.7</b>	<b>546.7</b>	<b>578.7</b>	<b>603.1</b>	<b>624.0</b>	<b>644.6</b>
<b>South West</b>	<b>670.5</b>	<b>692.3</b>	<b>718.2</b>	<b>738.0</b>	<b>756.3</b>	<b>774.6</b>
<b>West</b>	<b>633.7</b>	<b>650.8</b>	<b>673.1</b>	<b>692.8</b>	<b>709.6</b>	<b>726.0</b>

**Table A3: RLP Low: Resident Labour Force by boroughs and groupings**

(000s)	2001	2006	2011	2016	2021	2026
<b>Camden</b>	102.1	106.2	109.4	112.9	118.1	122.5
<b>Kensington and Chelsea</b>	83.1	87.6	90.9	93.6	95.6	96.8
<b>Westminster, City of</b>	107.6	115.7	121.0	125.1	128.6	130.7
<b>City of London</b>	4.6	5.8	6.9	7.8	8.2	8.5
<b>Central boroughs</b>	<b>297.4</b>	<b>315.3</b>	<b>328.1</b>	<b>339.3</b>	<b>350.6</b>	<b>358.4</b>
<b>Hackney</b>	92.7	100.8	107.3	112.4	116.8	120.0
<b>Hammersmith and Fulham</b>	91.6	96.0	100.2	101.7	104.4	106.7
<b>Haringey</b>	108.7	115.1	121.0	122.7	126.4	129.9
<b>Islington</b>	89.8	98.3	107.2	111.9	116.4	120.1
<b>Lambeth</b>	147.9	152.5	159.1	164.4	169.5	173.4
<b>Lewisham</b>	128.6	135.8	143.2	147.8	149.7	150.4
<b>Newham</b>	103.1	114.8	134.5	149.1	155.3	159.6
<b>Southwark</b>	126.4	135.6	146.1	153.3	160.8	167.4
<b>Tower Hamlets</b>	87.4	102.0	122.1	133.5	141.7	148.7
<b>Wandsworth</b>	155.6	162.2	168.5	170.9	174.3	176.9
<b>Rest of Inner boroughs</b>	<b>1131.9</b>	<b>1213.4</b>	<b>1309.1</b>	<b>1367.8</b>	<b>1415.3</b>	<b>1453.0</b>
<b>Inner London</b>	<b>1429.3</b>	<b>1528.7</b>	<b>1637.3</b>	<b>1707.1</b>	<b>1765.8</b>	<b>1811.4</b>
<b>Barking and Dagenham</b>	72.1	76.3	84.3	90.1	98.1	105.9
<b>Barnet</b>	156.7	163.5	176.6	184.4	187.3	188.3
<b>Bexley</b>	107.6	109.4	110.7	112.0	112.9	113.1
<b>Brent</b>	133.4	134.9	141.9	146.5	148.6	148.9
<b>Bromley</b>	146.4	153.1	158.0	160.2	161.6	162.0
<b>Croydon</b>	168.6	171.8	177.1	180.2	179.7	177.5
<b>Ealing</b>	156.8	157.8	160.9	165.3	167.4	167.7
<b>Enfield</b>	131.9	139.6	142.3	143.1	144.2	144.1
<b>Greenwich</b>	102.2	112.3	127.6	134.2	137.0	138.4
<b>Harrow</b>	104.5	109.9	113.5	113.8	113.6	112.8
<b>Havering</b>	108.3	113.3	118.6	120.0	120.3	120.6
<b>Hillingdon</b>	123.3	126.2	127.9	129.6	130.7	130.8
<b>Hounslow</b>	111.2	114.4	116.0	117.3	118.5	118.8
<b>Kingston upon Thames</b>	78.7	82.4	85.0	87.0	87.5	87.3
<b>Merton</b>	101.2	102.2	104.0	104.2	104.4	104.0
<b>Redbridge</b>	114.7	120.4	125.4	132.5	134.1	133.6
<b>Richmond upon Thames</b>	93.5	97.3	98.8	98.9	99.2	99.2
<b>Sutton</b>	94.1	96.8	99.4	100.1	100.2	99.7
<b>Waltham Forest</b>	108.2	108.7	111.5	113.6	114.5	114.2
<b>Outer London</b>	<b>2213.3</b>	<b>2290.3</b>	<b>2379.6</b>	<b>2433.0</b>	<b>2459.7</b>	<b>2466.9</b>
<b>GREATER LONDON</b>	<b>3642.6</b>	<b>3819.0</b>	<b>4016.8</b>	<b>4140.1</b>	<b>4225.5</b>	<b>4278.3</b>
<b>London Plan Sectors:</b>						
<b>North</b>	<b>789.6</b>	<b>839.3</b>	<b>884.8</b>	<b>912.5</b>	<b>937.7</b>	<b>955.5</b>
<b>North East</b>	<b>598.3</b>	<b>641.3</b>	<b>703.2</b>	<b>746.6</b>	<b>772.2</b>	<b>791.1</b>
<b>South East</b>	<b>611.3</b>	<b>646.3</b>	<b>685.6</b>	<b>707.5</b>	<b>722.0</b>	<b>731.3</b>
<b>South West</b>	<b>839.7</b>	<b>865.2</b>	<b>891.9</b>	<b>905.7</b>	<b>914.7</b>	<b>917.9</b>
<b>West</b>	<b>803.8</b>	<b>826.9</b>	<b>851.4</b>	<b>867.8</b>	<b>878.9</b>	<b>882.5</b>

**Table A4: RLP High: Population by boroughs and groupings**

(000s)	2001	2006	2011	2016	2021	2026
<b>Camden</b>	202.6	205.1	210.5	218.5	230.2	241.7
<b>Kensington and Chelsea</b>	162.2	169.5	176.0	182.1	187.3	191.7
<b>Westminster, City of</b>	203.3	215.9	225.7	234.8	243.1	249.9
<b>City of London</b>	7.4	9.3	11.0	12.7	13.7	14.4
<b>Central boroughs</b>	<b>575.5</b>	<b>599.9</b>	<b>623.3</b>	<b>648.1</b>	<b>674.3</b>	<b>697.7</b>
<b>Hackney</b>	207.2	218.1	228.9	241.1	253.3	264.4
<b>Hammersmith and Fulham</b>	169.4	177.5	184.8	189.2	195.7	202.0
<b>Haringey</b>	221.3	228.5	238.1	243.7	253.9	264.3
<b>Islington</b>	179.4	190.8	205.1	215.3	226.3	236.7
<b>Lambeth</b>	273.4	283.7	295.7	309.1	323.4	336.4
<b>Lewisham</b>	254.3	260.7	270.2	280.6	288.3	294.4
<b>Newham</b>	249.4	260.1	295.4	328.4	346.4	360.7
<b>Southwark</b>	256.7	269.0	286.4	302.3	321.3	339.7
<b>Tower Hamlets</b>	201.1	223.3	261.1	287.4	308.7	328.4
<b>Wandsworth</b>	271.7	286.3	297.5	304.5	313.2	321.2
<b>Rest of Inner</b>	<b>2283.9</b>	<b>2398.1</b>	<b>2563.2</b>	<b>2701.6</b>	<b>2830.4</b>	<b>2948.0</b>
<b>Inner London</b>	<b>2859.4</b>	<b>2998.0</b>	<b>3186.5</b>	<b>3349.7</b>	<b>3504.6</b>	<b>3645.7</b>
<b>Barking and Dagenham</b>	165.7	169.1	180.7	191.8	210.5	230.6
<b>Barnet</b>	319.5	328.9	350.1	367.0	377.3	385.6
<b>Bexley</b>	218.8	218.0	217.4	221.0	225.8	230.3
<b>Brent</b>	269.6	276.8	290.7	302.4	310.1	316.3
<b>Bromley</b>	296.2	304.3	309.2	314.4	321.1	327.9
<b>Croydon</b>	335.1	337.2	344.2	352.2	356.9	360.3
<b>Ealing</b>	307.3	312.3	318.7	330.7	339.7	346.3
<b>Enfield</b>	277.3	288.1	290.6	293.6	298.9	303.5
<b>Greenwich</b>	217.5	234.0	261.3	276.4	286.1	294.7
<b>Harrow</b>	210.0	217.0	222.8	226.1	228.9	230.6
<b>Havering</b>	224.7	229.0	234.8	239.2	243.9	248.2
<b>Hillingdon</b>	245.6	248.1	248.8	252.9	258.0	262.2
<b>Hounslow</b>	216.0	222.8	226.6	231.8	237.5	242.0
<b>Kingston upon Thames</b>	149.0	154.0	158.6	163.9	167.2	169.5
<b>Merton</b>	191.1	195.0	197.8	199.5	202.2	205.0
<b>Redbridge</b>	241.9	249.1	255.8	270.4	277.3	280.9
<b>Richmond upon Thames</b>	174.3	182.2	185.7	188.1	191.7	194.9
<b>Sutton</b>	181.5	183.1	184.7	186.6	189.3	191.8
<b>Waltham Forest</b>	222.0	224.7	229.5	235.3	240.2	244.0
<b>Outer London</b>	<b>4463.0</b>	<b>4573.9</b>	<b>4708.1</b>	<b>4843.4</b>	<b>4962.7</b>	<b>5064.6</b>
<b>GREATER LONDON</b>	<b>7322.4</b>	<b>7571.9</b>	<b>7894.6</b>	<b>8193.0</b>	<b>8467.3</b>	<b>8710.3</b>
<b>London Plan Sectors:</b>						
<b>North</b>	<b>1610.5</b>	<b>1675.5</b>	<b>1749.0</b>	<b>1813.9</b>	<b>1883.0</b>	<b>1946.0</b>
<b>North East</b>	<b>1312.1</b>	<b>1364.7</b>	<b>1468.4</b>	<b>1565.3</b>	<b>1640.6</b>	<b>1707.2</b>
<b>South East</b>	<b>1243.5</b>	<b>1286.1</b>	<b>1344.5</b>	<b>1394.7</b>	<b>1442.6</b>	<b>1487.0</b>
<b>South West</b>	<b>1576.1</b>	<b>1621.5</b>	<b>1664.2</b>	<b>1704.0</b>	<b>1744.0</b>	<b>1779.2</b>
<b>West</b>	<b>1580.1</b>	<b>1624.1</b>	<b>1668.5</b>	<b>1715.1</b>	<b>1757.1</b>	<b>1791.0</b>

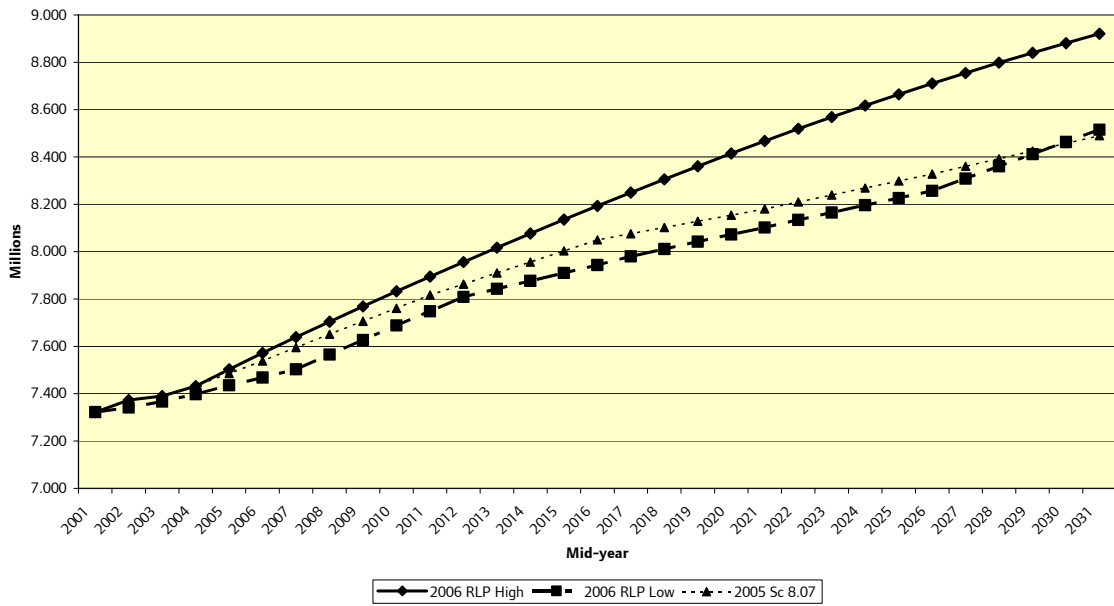
**Table A5: RLP High: Households by boroughs and groupings**

(000s)	2001	2006	2011	2016	2021	2026
<b>Camden</b>	91.7	96.1	99.7	104.2	110.8	117.4
<b>Kensington and Chelsea</b>	79.3	82.0	84.4	87.3	90.2	92.9
<b>Westminster, City of</b>	100.0	106.2	110.6	115.6	120.7	125.4
<b>City of London</b>	4.3	5.3	6.2	7.2	7.8	8.3
<b>Central boroughs</b>	<b>275.4</b>	<b>289.6</b>	<b>300.8</b>	<b>314.3</b>	<b>329.5</b>	<b>344.0</b>
<b>Hackney</b>	86.1	92.1	98.3	105.2	111.9	118.3
<b>Hammersmith and Fulham</b>	75.6	78.7	82.4	85.2	89.1	93.1
<b>Haringey</b>	92.2	95.7	101.2	104.8	110.4	116.2
<b>Islington</b>	82.3	88.9	97.1	103.3	109.8	116.1
<b>Lambeth</b>	118.7	124.3	131.1	138.9	147.1	155.0
<b>Lewisham</b>	107.6	112.6	119.3	126.5	131.7	136.0
<b>Newham</b>	91.6	99.6	117.9	135.8	146.8	155.8
<b>Southwark</b>	109.2	116.4	126.1	135.7	146.7	157.8
<b>Tower Hamlets</b>	78.7	91.9	112.3	127.8	140.4	152.3
<b>Wandsworth</b>	119.4	126.8	133.3	138.3	144.3	150.2
<b>Rest of Inner</b>	<b>961.4</b>	<b>1027.0</b>	<b>1118.9</b>	<b>1201.5</b>	<b>1278.2</b>	<b>1350.6</b>
<b>Inner London</b>	<b>1236.8</b>	<b>1316.6</b>	<b>1419.8</b>	<b>1515.8</b>	<b>1607.7</b>	<b>1694.6</b>
<b>Barking and Dagenham</b>	67.2	70.8	77.4	84.2	94.2	104.9
<b>Barnet</b>	127.0	133.7	145.1	155.5	163.0	169.5
<b>Bexley</b>	89.7	91.6	93.5	96.8	100.2	103.2
<b>Brent</b>	100.3	105.3	113.0	120.3	126.0	130.9
<b>Bromley</b>	126.1	130.7	134.7	138.7	143.3	147.7
<b>Croydon</b>	139.0	144.8	151.6	158.9	164.2	168.5
<b>Ealing</b>	118.1	122.2	126.6	133.8	139.9	145.1
<b>Enfield</b>	110.6	116.3	119.4	122.9	127.0	130.8
<b>Greenwich</b>	93.0	102.7	116.5	125.9	132.6	138.7
<b>Harrow</b>	79.5	82.8	86.2	88.8	91.3	93.5
<b>Havering</b>	91.9	94.9	98.9	102.2	105.2	107.9
<b>Hillingdon</b>	96.8	100.1	102.3	105.7	109.2	112.3
<b>Hounslow</b>	84.1	88.0	90.9	94.5	98.3	101.8
<b>Kingston upon Thames</b>	61.5	64.7	67.4	70.6	73.1	75.1
<b>Merton</b>	79.0	82.2	85.0	87.7	90.6	93.4
<b>Redbridge</b>	92.5	96.7	101.1	109.0	113.6	116.8
<b>Richmond upon Thames</b>	76.3	79.8	82.2	84.5	87.3	90.0
<b>Sutton</b>	76.5	79.2	81.8	84.4	86.9	89.2
<b>Waltham Forest</b>	89.9	93.3	97.5	102.3	106.4	110.0
<b>Outer London</b>	<b>1799.1</b>	<b>1879.8</b>	<b>1971.2</b>	<b>2066.6</b>	<b>2152.1</b>	<b>2229.3</b>
<b>GREATER LONDON</b>	<b>3035.9</b>	<b>3196.3</b>	<b>3391.0</b>	<b>3582.4</b>	<b>3759.8</b>	<b>3923.9</b>
<b>GL (Independent)</b>	<b>3036.1</b>	<b>3196.3</b>	<b>3388.6</b>	<b>3578.5</b>	<b>3754.0</b>	<b>3915.9</b>
<b>London Plan Sectors:</b>						
<b>North</b>	<b>689.9</b>	<b>729.0</b>	<b>771.4</b>	<b>811.6</b>	<b>853.5</b>	<b>893.7</b>
<b>North East</b>	<b>516.1</b>	<b>552.4</b>	<b>611.3</b>	<b>668.4</b>	<b>714.4</b>	<b>756.0</b>
<b>South East</b>	<b>525.7</b>	<b>554.0</b>	<b>590.1</b>	<b>623.6</b>	<b>654.6</b>	<b>683.3</b>
<b>South West</b>	<b>670.5</b>	<b>701.7</b>	<b>732.5</b>	<b>763.3</b>	<b>793.5</b>	<b>821.2</b>
<b>West</b>	<b>633.7</b>	<b>659.2</b>	<b>685.8</b>	<b>715.6</b>	<b>743.9</b>	<b>769.6</b>

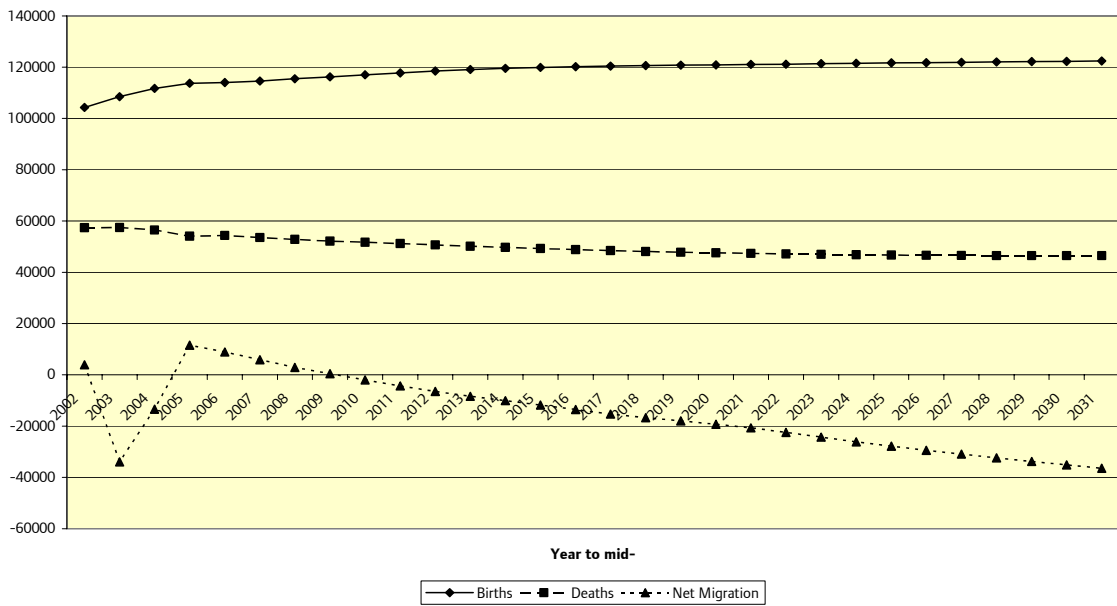
**Table A6: RLP High: Resident Labour Force by boroughs and groupings**

(000s)	2001	2006	2011	2016	2021	2026
<b>Camden</b>	102.1	108.0	112.0	117.2	124.3	130.0
<b>Kensington and Chelsea</b>	83.1	89.0	93.1	97.1	100.7	102.8
<b>Westminster, City of</b>	107.6	117.6	123.9	129.9	135.4	138.8
<b>City of London</b>	4.6	5.9	7.0	8.1	8.7	9.1
<b>Central boroughs</b>	<b>297.4</b>	<b>320.6</b>	<b>336.1</b>	<b>352.4</b>	<b>369.0</b>	<b>380.7</b>
<b>Hackney</b>	92.7	102.6	110.0	116.8	123.0	127.5
<b>Hammersmith and Fulham</b>	91.6	97.7	102.7	105.8	110.0	113.3
<b>Haringey</b>	108.7	117.2	124.0	127.5	133.1	138.0
<b>Islington</b>	89.8	100.1	109.9	116.3	122.6	127.6
<b>Lambeth</b>	147.9	155.3	163.0	170.8	178.4	184.2
<b>Lewisham</b>	128.6	138.2	146.6	153.5	157.6	159.8
<b>Newham</b>	103.1	116.9	137.9	155.0	163.5	169.6
<b>Southwark</b>	126.4	138.0	149.7	159.3	169.4	177.8
<b>Tower Hamlets</b>	87.4	104.0	125.3	138.9	149.3	158.0
<b>Wandsworth</b>	155.6	165.1	172.8	177.6	183.5	187.8
<b>Rest of Inner boroughs</b>	<b>1131.9</b>	<b>1235.0</b>	<b>1341.8</b>	<b>1421.5</b>	<b>1490.4</b>	<b>1543.5</b>
<b>Inner London</b>	<b>1429.3</b>	<b>1555.6</b>	<b>1677.9</b>	<b>1773.9</b>	<b>1859.4</b>	<b>1924.2</b>
<b>Barking and Dagenham</b>	72.1	77.5	86.2	93.4	103.1	112.5
<b>Barnet</b>	156.7	166.1	180.5	191.0	196.8	199.9
<b>Bexley</b>	107.6	111.2	113.1	116.0	118.6	120.1
<b>Brent</b>	133.4	137.1	145.1	151.8	156.2	158.2
<b>Bromley</b>	146.4	155.5	161.4	165.9	169.8	171.9
<b>Croydon</b>	168.6	174.4	180.9	186.6	188.7	188.4
<b>Ealing</b>	156.8	160.4	164.5	171.3	176.0	178.1
<b>Enfield</b>	131.9	141.9	145.4	148.3	151.5	153.0
<b>Greenwich</b>	102.2	114.1	130.5	139.1	144.0	147.0
<b>Harrow</b>	104.5	111.7	116.0	117.9	119.4	119.8
<b>Havering</b>	108.3	115.1	121.2	124.3	126.4	128.1
<b>Hillingdon</b>	123.3	128.2	130.7	134.3	137.3	138.8
<b>Hounslow</b>	111.2	116.2	118.7	121.6	124.6	126.2
<b>Kingston upon Thames</b>	78.7	83.7	86.9	90.2	92.0	92.7
<b>Merton</b>	101.2	103.8	106.3	108.0	109.7	110.4
<b>Redbridge</b>	114.7	122.3	128.1	137.3	140.9	141.9
<b>Richmond upon Thames</b>	93.5	98.8	101.0	102.5	104.3	105.3
<b>Sutton</b>	94.1	98.3	101.5	103.7	105.3	105.8
<b>Waltham Forest</b>	108.2	110.4	114.0	117.7	120.4	121.2
<b>Outer London</b>	<b>2213.3</b>	<b>2326.8</b>	<b>2432.0</b>	<b>2521.0</b>	<b>2585.1</b>	<b>2619.3</b>
<b>GREATER LONDON</b>	<b>3642.6</b>	<b>3882.4</b>	<b>4109.9</b>	<b>4294.9</b>	<b>4444.4</b>	<b>4543.5</b>
<b>London Plan Sectors:</b>						
<b>North</b>	<b>789.6</b>	<b>853.4</b>	<b>905.7</b>	<b>947.2</b>	<b>986.6</b>	<b>1014.9</b>
<b>North East</b>	<b>598.3</b>	<b>652.1</b>	<b>719.6</b>	<b>774.7</b>	<b>812.3</b>	<b>840.3</b>
<b>South East</b>	<b>611.3</b>	<b>656.9</b>	<b>701.2</b>	<b>733.7</b>	<b>759.3</b>	<b>776.6</b>
<b>South West</b>	<b>839.7</b>	<b>879.5</b>	<b>912.5</b>	<b>939.4</b>	<b>962.0</b>	<b>974.6</b>
<b>West</b>	<b>803.8</b>	<b>840.4</b>	<b>870.8</b>	<b>899.9</b>	<b>924.2</b>	<b>937.1</b>

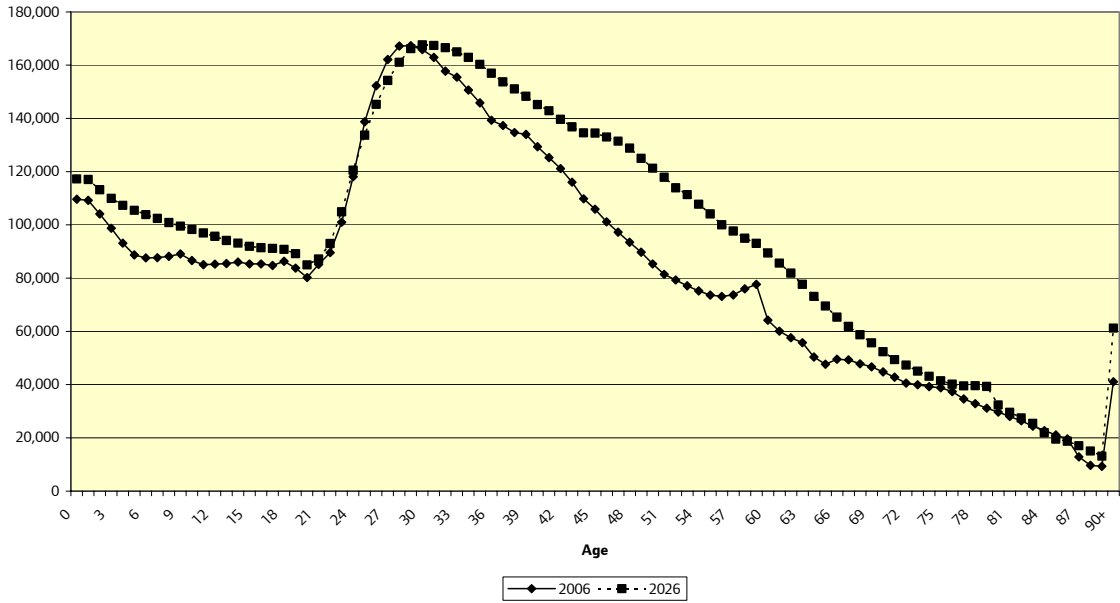
**Chart 1: Projections Compared: London: 2001-26**



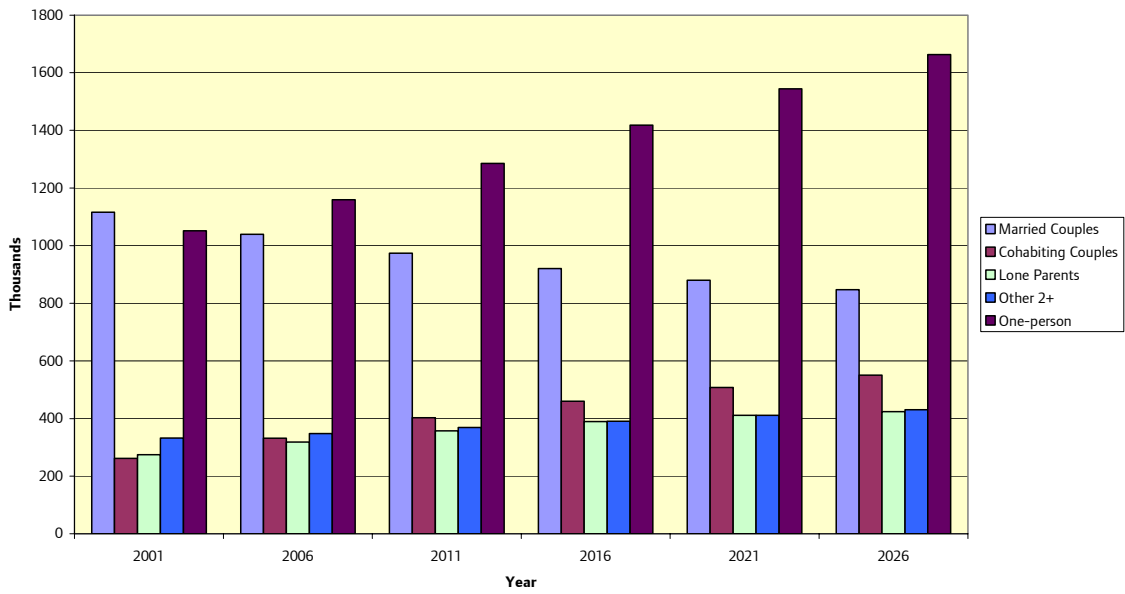
**Chart 2: RLP High: London: Components of Change**



**Chart 3: RLP High: London: Age Structure**



**Chart 4: RLP High: London: Households by Type**



## Access to Data

Full results are available for Greater London, each London borough, borough groups and *London Plan* sub-regions as follows:

- Population by single years of age and gender from 2001 to 2031
- Households by type and age, gender and marital status of representative for 2001, 2006, 2011, 2016, 2021 and 2026
- Resident Labour Force by grouped ages and gender from 2001 to 2031

Ward projections consistent with RLP High are also available.

These data are available via the GLA Demography Extranet or on request from Caroline Hall ([caroline.hall@london.gov.uk](mailto:caroline.hall@london.gov.uk)) 020 7983 4347.

Previous Rounds of GLA projections are also available on request.

## Regular Briefings from the GLA Data Management and Analysis Group

Recent *DMAG Briefings*:

DMAG 2006/1	Census Information Note 2006-1	Eileen Howes
DMAG 2006/2	Simpson's diversity indices for wards 1991 and 2001	Gareth Piggott
DMAG 2006/3	2001 Census: The health of a diverse population	Gareth Piggott
DMAG 2006/4	London borough residents country of birth	Giorgio Finella
DMAG 2006/5	GLA Resident Labour Force Projections	John Hollis
DMAG 2006/6	Parents and Work in London	Lorna Spence
DMAG 2006/7	Claimant Count Model: Technical Note 2006	Lorna Spence / Georgia Hay
DMAG 2006/8	Demography Team Workplan 2006-07	John Hollis
DMAG 2006/9	Benefits Data for London: No. 4: Housing and Council Tax Benefits	Lovedeep Vaid
DMAG 2006/10	Household Representative Rates: Technical Report	Georgia Hay
DMAG 2006/11	Borough and Sub-regional Demographic Profiles, 2006	Georgia Hay
DMAG 2006/12	Interim Household Projections	John Hollis / Georgia Hay
DMAG 2006/13	Social Exclusion Team Workplan 2006-07	John Hollis
DMAG 2006/14	Benefits Data for London: No 5 Pension Benefits	Lovedeep Vaid
DMAG 2006/15	Census Information Note 2006-2	Giorgio Finella
DMAG 2006/17	Sub-Regional Demographic Profiles 2006	Georgia Hay
DMAG 2006/18	Independence for Statistics	John Hollis
DMAG 2006/19	Child Poverty in London	Lorna Spence (ed)
DMAG 2006/20	Benefits Data for London: 6 Tax Credits	Lovedeep Vaid
DMAG 2006/21	Family and Children's Study 2004	Lovedeep Vaid
DMAG 2006/22	GLA 2005 Round Interim Ethnic Group Population Projections	Baljit Bains / Edmund Klodawski
DMAG 2006/24	National Insurance Registrations by overseas nationals	Gareth Piggott
DMAG 2006/26	A Profile of Londoners by First Language	Lorna Spence
DMAG 2006/27	2001 Census Profile: Jewish population of London	Gareth Piggott / Rob Lewis
DMAG 2006/28	Review of the 2001 Census Small Area Microdata	Rachel Leeser / Giorgio Finella
DMAG 2006/29	Children dependent on benefits by Parliamentary Constituencies	Lovedeep Vaid
DMAG 2006/30	Londoners and the labour market: key facts	Lorna Spence
DMAG 2006/31	The Census Language Needs Indicator	Gareth Piggott
DMAG 2006/33	Women and the labour market in London: Key facts	Lorna Spence
DMAG 2006/34	PayCheck 2006: Unequalised and Equalised Household Income	Lovedeep Vaid

A full list of DMAG Briefings is available to internal customers through the GLA Intranet; otherwise please contact [dmag.info@london.gov.uk](mailto:dmag.info@london.gov.uk) A CD containing PDF versions of the Briefings, or hard copies, can be provided.

## Contact details for the Data Management and Analysis Group are as follows:

**Rob Lewis (020 7983 4652)** is **Head of the Data Management and Analysis Group**. [rob.lewis@london.gov.uk](mailto:rob.lewis@london.gov.uk)

**Bill Armstrong (020 7983 4653)** works in the **Census Team** with particular responsibilities for **commissioned tables, workplace data** and **mapping**. [bill.armstrong@london.gov.uk](mailto:bill.armstrong@london.gov.uk)

**Baljit Bains (020 7983 4613)** works in the **Demography Team** and is responsible for **ethnic demography**, including **ethnic group projections**. [baljit.bains@london.gov.uk](mailto:baljit.bains@london.gov.uk)

**Gareth Baker (020 7983 4965)** is the **GIS Manager**. [gareth.baker@london.gov.uk](mailto:gareth.baker@london.gov.uk)

**Shen Cheng (020 7983 4889)** works in the **Education Team** and is responsible for **school roll projections**. [shen.cheng@london.gov.uk](mailto:shen.cheng@london.gov.uk)

**David Ewens (020 7983 4656)** works in the **Education Team** and is responsible for **research and data analysis**. [david.ewens@london.gov.uk](mailto:david.ewens@london.gov.uk)

**Giorgio Finella (020 7983 4328)** works in the **Census Team**. [giorgio.finella@london.gov.uk](mailto:giorgio.finella@london.gov.uk)

**Caroline Hall (020 7983 4347)** works in the **Demography Team** and is responsible for **ward level projections**, the **Demography Extranet** and **borough liaison**. [caroline.hall@london.gov.uk](mailto:caroline.hall@london.gov.uk)

**John Hollis (020 7983 4604)** is responsible for the work of the **Demography, Education** and **Social Exclusion Teams**, and particularly for **demographic modelling**. [john.hollis@london.gov.uk](mailto:john.hollis@london.gov.uk)

**Eileen Howes (020 7983 4657)** is responsible for the work of the **Census, SASPAC** and **General Statistics Teams** and particularly for **census analysis**. [eileen.howes@london.gov.uk](mailto:eileen.howes@london.gov.uk)

**Ed Klodawski (020 7983 4694)** works in the **Demography Team**. His post is joint with the **London Health Observatory** and specialises in **ethnic** and **health** issues. [edmund.klodawski@london.gov.uk](mailto:edmund.klodawski@london.gov.uk)

**Rachel Leeser (020 7983 4696)** works in the **Social Exclusion Team** with particular responsibilities for **surveys, income data** and the **Social Exclusion Data Users Group**. [rachel.leeser@london.gov.uk](mailto:rachel.leeser@london.gov.uk)

**Alan Lewis (020 7983 4348)** is currently seconded to the **GIS Team** but usually works on the **SASPAC** project. [alan.lewis@london.gov.uk](mailto:alan.lewis@london.gov.uk)

**Gareth Piggott (020 7983 4327)** works in the **General Statistics Team**. [gareth.piggott@london.gov.uk](mailto:gareth.piggott@london.gov.uk)

**Kelly Rump (020 7983 4655)** is DMAG's **Senior Coordinator**. [kelly.rump@london.gov.uk](mailto:kelly.rump@london.gov.uk)

**Lorna Spence (020 7983 4658)** is a member of the **Social Exclusion Team**, with particular responsibilities for **labour market data**. [lorna.spence@london.gov.uk](mailto:lorna.spence@london.gov.uk)

**Lovedeep Vaid (020 7983 4699)** works in the **Social Exclusion Team** with particular responsibilities for **benefits, indicators, income data** and the **Social Exclusion Extranet**. [lovedeep.vaid@london.gov.uk](mailto:lovedeep.vaid@london.gov.uk)