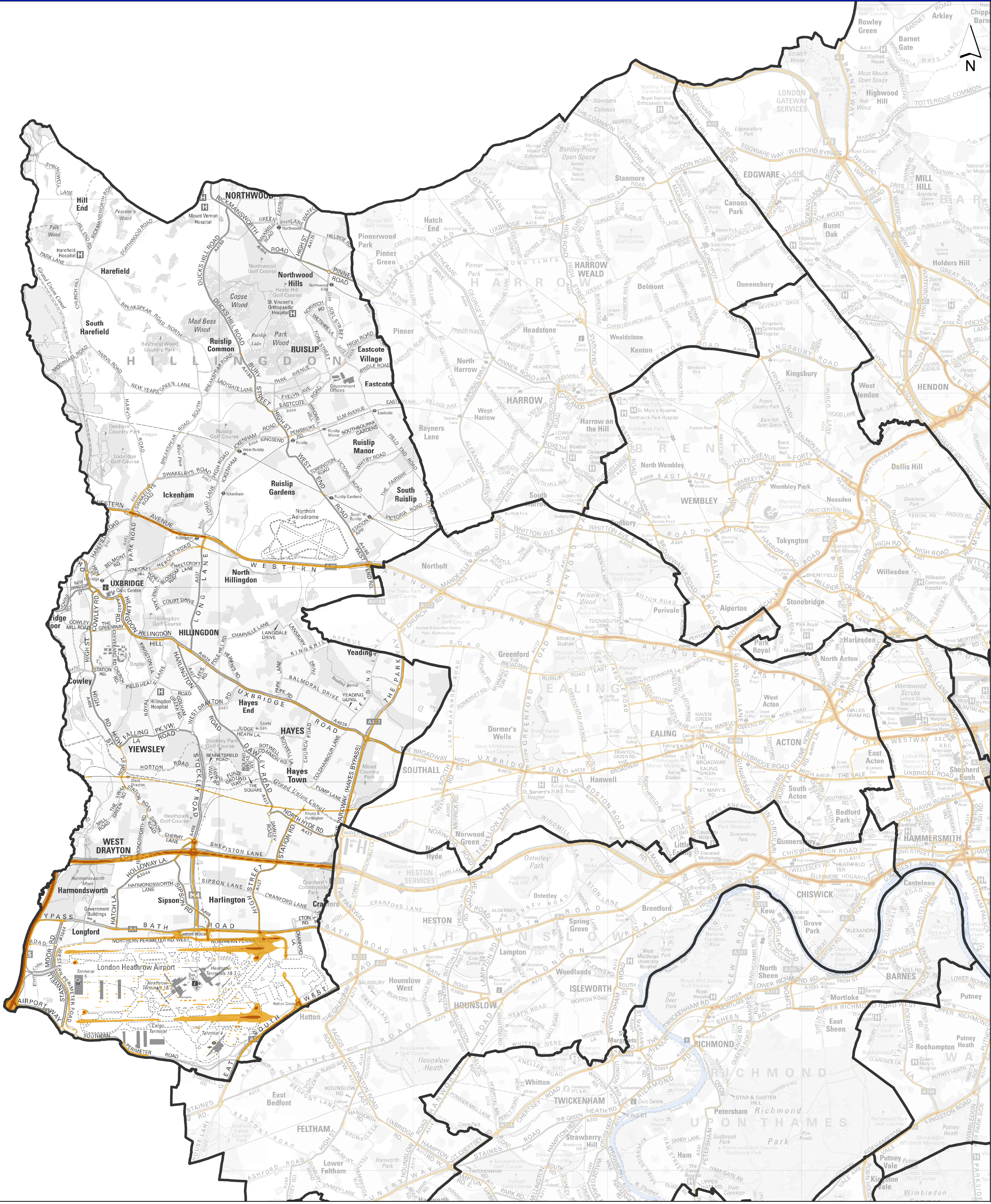


London Borough of Hillingdon

Annual Mean NO₂ concentrations 2020

LAEI 2013 Update



Legend

NO₂ (µg/m³)

- >60
- >40
- Boroughs

Total area -	115.7 Km ²
Area greater than -	3.63 Km ²
40µg/m ³	
Percentage greater than -	3.14 %
40µg/m ³	
Area greater than -	0.52 Km ²
60µg/m ³	
Percentage greater than -	0.45 %
60µg/m ³	

MAYOR OF LONDON

GREATERLONDONAUTHORITY

