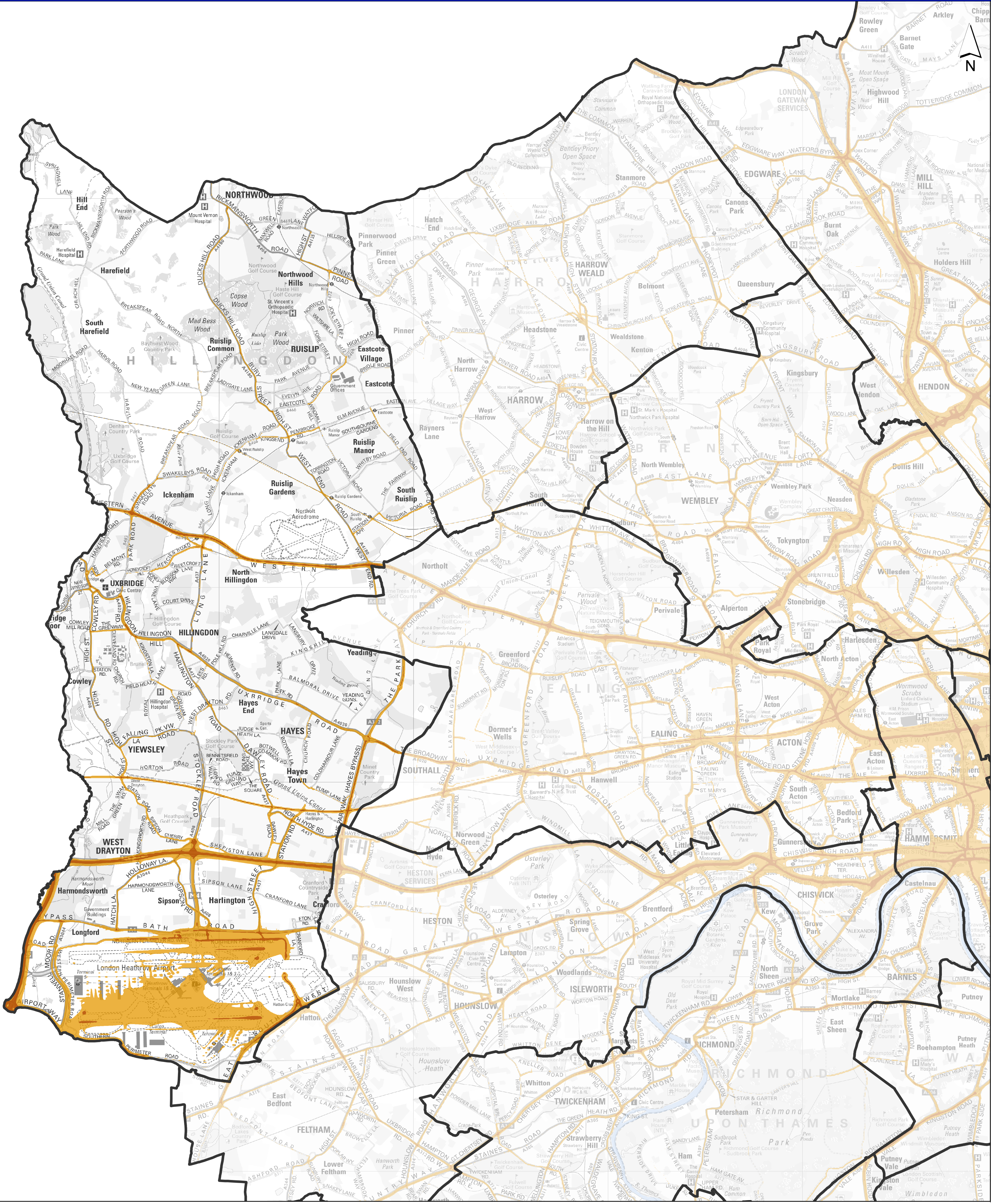


# London Borough of Hillingdon

## Annual Mean NO<sub>2</sub> concentrations 2013

# LAEI 2013 Update



**Legend**

NO<sub>2</sub> (µg/m<sup>3</sup>)

- >60
- >40
- Boroughs

Total area -	115.7 Km <sup>2</sup>
Area greater than -	10.48 Km <sup>2</sup>
40µg/m <sup>3</sup>	
Percentage greater than -	9.06 %
40µg/m <sup>3</sup>	
Area greater than -	1.3 Km <sup>2</sup>
60µg/m <sup>3</sup>	
Percentage greater than -	1.12 %
60µg/m <sup>3</sup>	

MAYOR OF LONDON

GREATERLONDONAUTHORITY

