



# Fire Facts

Fires in Greater London

2017

## About this publication

Publication date: 31 July 2018

This document was produced by the London Fire Brigade Information Management Team.

For information about this publication contact:

Andrew Mobbs  
LFB Information Management  
169 Union Street  
London SE1 0LL

Tel: 020 8555 1200

email: [andrew.mobbs@london-fire.gov.uk](mailto:andrew.mobbs@london-fire.gov.uk)

## Copyright and reproduction

This document, and the accompanying tables, are also available on our website at [www.london-fire.gov.uk](http://www.london-fire.gov.uk) and on the London Datastore at [data.london.gov.uk](http://data.london.gov.uk).

This publication is the copyright of the London Fire Brigade.

You may use or re-use this information (not including logos) free of charge in any format or medium, under the terms of the Open Government Licence. To view this licence, visit:

[www.nationalarchives.gov.uk/doc/open-government-licence/](http://www.nationalarchives.gov.uk/doc/open-government-licence/)

## The London Fire Brigade

The London Fire Brigade is run by the London Commissioner (LFC) who is the fire and rescue authority for London.

For more information about LFB/LFC and the work of the London Fire Brigade visit [www.london-fire.gov.uk](http://www.london-fire.gov.uk).

## Other publications in this series

The London Fire Brigade has other publications in the Fire Facts series:

*Fires incident response times, 2017* – [here](#)

*Fire deaths in London, 2017*

[First edition to be published in August 2018]

*LFB abstract of statistics, 2018*

[First edition to be published in August 2018]

## Other data available

The LFB publishes a range of data on the London Datastore. Much of these data are updated on a monthly basis. Go to the LFB page on the datastore to see what is available – <https://data.london.gov.uk/publisher/lfb>

We publish information about the incidents we attend and the attendance times for the first and second fire engines to arrive via our online mapping tool. This tool displays information at borough and ward level and is updated monthly. To use this tool visit <https://lfbincidentmapping.london-fire.gov.uk/>

## Version history

Version 2 was published on 7 August 2018 included minor typographical corrections.

This version (v3) was published on 9 August 2018 and includes adjustment to Table 1.2 to insert data for 2008 which was missing.

# Contents

<b>Introduction.....</b>	<b>v</b>
<i>A brief history of the London Fire Brigade.....</i>	<i>v</i>
<i>Scope of this document.....</i>	<i>vi</i>
<i>Recording fire incidents.....</i>	<i>vi</i>
<i>LFB electronic data collection.....</i>	<i>vi</i>
<i>Categories of fires.....</i>	<i>vi</i>
<i>Symbols and conventions used.....</i>	<i>vii</i>
<b>Chapter 1   Long term trends.....</b>	<b>1</b>
<i>Fires in Greater London.....</i>	<i>1</i>
<i>Primary fires.....</i>	<i>2</i>
<i>Secondary fires.....</i>	<i>2</i>
<i>Chimney fires.....</i>	<i>2</i>
<i>Fire related deaths.....</i>	<i>4</i>
<i>Fire related injuries.....</i>	<i>4</i>
Table 1.1    Time series; total number of fires in Greater London, since 1966.....	5
Table 1.2    Time series; fire related fatalities and injuries, since 1966.....	7
<b>Chapter 2   Where fires happen.....</b>	<b>9</b>
<i>Property types.....</i>	<i>9</i>
<i>Fire motive.....</i>	<i>10</i>
<i>Fires in the London boroughs.....</i>	<i>12</i>
<i>When fires happen.....</i>	<i>13</i>
Table 2.1    Fires, by fire and property type categories, since 2000.....	15
Table 2.2    Fires, by property type category and motive, since 2000.....	16
Table 2.3    All fires, by London borough, since 2000.....	17
Table 2.4    Chimney fires, by London borough, since 2000.....	18
Table 2.5    Primary fires, by London borough, since 2000.....	19
Table 2.6    Secondary fires, by London borough, since 2000.....	20
Table 2.7    Fire related fatalities, by London borough, since 2000.....	21
Table 2.8    Fire related injuries, by London borough, since 2000.....	22
Table 2.9    Fires by hour of the day, since 2000.....	23
Table 2.10   Fires by month of the year, since 2000.....	24
<b>Chapter 3   Fires in the home.....</b>	<b>25</b>
<i>Trend in dwelling fires.....</i>	<i>25</i>

<i>Where fires in the home happen</i> .....	25
<i>How fires in the home start</i> .....	26
<i>Firefighting actions</i> .....	26
<i>Working smoke alarms</i> .....	27
Table 3.1 Dwelling fires, by property category and type, since 2010 .....	28
Table 3.2 Dwelling fires, by motive, since 2000 .....	28
Table 3.3 Dwelling fires and casualties, by location of fire start, since 2010 .....	29
Table 3.4 Dwelling fires and casualties, by source of ignition, since 2010 .....	31
Table 3.5 Dwelling fires, by firefighting actions, since 2010 .....	33
Table 3.6 Dwelling fires, by London borough, since 2000 .....	34
Table 3.7 Dwelling fire related fatalities, by London borough, since 2000 .....	35
Table 3.8 Dwelling fire injuries, by London borough, since 2005 .....	36
<b>Chapter 4   Fires in other buildings</b> .....	<b>37</b>
<i>Trend in other building fires</i> .....	37
<i>Other residential building fires</i> .....	37
<i>Non-residential building fires</i> .....	37
Table 4.1 Fires in other residential buildings, since 2010 .....	39
Table 4.2 Fires in non-residential buildings, since 2010 .....	40
Table 4.3 Fires in other buildings, by source of ignition, since 2010 .....	41
Table 4.4 Fires in other residential buildings, by borough, since 2005 .....	42
Table 4.5 Fires in non-residential buildings, by borough, since 2005 .....	43

## Introduction

This *Fire Facts* report sets out the key information on the fires we attend. We have a continuous record of the number of all fires since 1966 after the creation of the Greater London area. More detailed records on the numbers and types of fire start in 2000 when electronic recording systems were introduced by LFB.

### A brief history of the London Fire Brigade

The roots of a single fire service responsible for London start in 1833 when, under the leadership of James Braidwood, the LONDON FIRE ENGINE ESTABLISHMENT was formed. The London Fire Engine Establishment was a private enterprise, funded by the insurance companies and as such was responsible mainly for saving material goods from fire.

In June 1861, a huge conflagration at Cotton's Wharf, a riverside warehouse in Tooley Street, Southwark, claimed the life of James Braidwood, and resulted in insurance claims for more than £2 million (£1.6bn at today's value). The subsequent increase in insurance premiums caused many of the merchants of the City to protest to the Lord Mayor. A Select Committee of the House of Commons was appointed 'to enquire into the existing state of legislation and of any existing arrangements for the protection of life and property against fire in the Metropolis'.

In 1865, the Metropolitan Fire Brigade Act was passed, placing responsibility for the fire service in the metropolis upon the Board of Works. The London Fire Establishment continued to function until 1 January 1866, on which date the new METROPOLITAN FIRE BRIGADE formally came into existence. Captain Sir Eyre Massey Shaw, who had been appointed as the Superintendent of the London Fire Establishment after Braidwood's death, remained in charge of the newly formed brigade.

On 21 March 1889, by virtue of the Local Government Act 1888, the Metropolis, including the City, was converted into the Administrative County of London; the Metropolitan Board of Works went out of existence and its functions taken over by the London

County Council (LCC). In 1904, the London County Council changed the name of the service from the Metropolitan Fire Brigade to the LONDON FIRE BRIGADE.

In March 1938, ahead of the start of the Second World War, recruitment started in London for an Auxiliary Fire Service. Heavy air raids during the Blitz (1940/1941) had shown that regional firefighting resources were insufficient and the Government decided to unify the services. On 18 August 1941 the NATIONAL FIRE SERVICE (NFS) came into being.

The NFS continued to provide a service in peacetime after the war until 1 April 1948 when the Fire Service Act 1947 placed responsibility for fire brigades on county and 'county borough' councils. At this time the London Fire Brigade was once more under of the London County Council.

The local government of London changed again in 1965 when the Greater London area was formally defined and created by the London Government Act 1963, which came into force on 1 April 1965. This new area replaced the former administrative counties of Middlesex and London (the LCC), adding the City of London and absorbing parts of Kent, Surrey, Essex, a small part of Hertfordshire and the county boroughs of Croydon, East Ham and West Ham. This new area was governed by the newly formed GREATER LONDON COUNCIL (GLC). The GLC took over running the London Fire Brigade in 1965 which was expanded with the fire stations, fire appliances and fire staff from the areas absorbed into Greater London from surrounding counties, including most of the former county of Middlesex, and parts of Essex, Kent, Surrey, and a small part of Hertfordshire.

In 1986 the Greater London Council was abolished and the Local Government Act 1985 transferred the functions of fire service and civil defence to a newly formed LONDON FIRE AND CIVIL DEFENCE AUTHORITY (LFCDA) which took over on the 1 April 1986.

On 7 May 1998 Londoners voted in a referendum asking whether there was support for Greater London Authority, made up of an elected mayor and a separately elected assembly. Londoners voted 72 per cent in favour and the new governance structure was set out in the Greater London Authority Act 1999. On the 3 July 2000 the LFCDA was reconstituted as the LONDON FIRE AND EMERGENCY PLANNING AUTHORITY.

From 1 April 2018 under the Policy and Crime Act 2017 LFEPA was abolished and the LONDON FIRE COMMISSIONER (LFC) was established as a corporation sole, reporting to the Mayor of London, as the fire and rescue authority for London. The London Fire Brigade (LFB) is the fire and rescue service for the Greater London area and is run by the LFC.

The Mayor has appointed a Deputy Mayor for fire and resilience. The London Assembly provides scrutiny of the new arrangements via a Fire, Resilience and Emergency Planning Committee.

The Brigade sets out how its prevention, protection and response activities will best be used to mitigate the impact of risk on communities in its Integrated Risk Management Plan (IRMP). The Brigade's IRMP is known as the London Safety Plan; the most recent of which was the London Safety Plan 2017 agreed in March 2017. LSP2017 runs for four years from April 2017 to March 2021.

The Brigade also publishes a Local Assessment of Risk in London which is available on the LFB website – [here](#) – together with a postcode [tool](#) to look at how we understand risk in different areas of London.

### Scope of this document

In this report we focus on those incidents that happen within the boundaries of Greater London.

### Recording fire incidents

In 1966, fires were recorded using Fire Report forms K433 and K433H. Fire Report form K433 was introduced by the Home Office and Scottish Home Department in 1953 for recording every fire with the exception of chimney fires confined to (did not spread beyond) chimneys.

To simplify the information recording of smaller, less serious fires, a second form K433H was introduced in 1960 which captured a reduced set of information for fires that were confined to grassland, heathland, or railway embankments. In 1970, K433H was revised and its use extended to cover a larger group of minor fires.

January 1978 saw the introduction of a new recording method; the Fire Damage Report – FDR1. FDR1 was revised in 1994.

Fire recording changed again in 2008 when the government introduced a national Incident Recording System (IRS) which was the first fully electronic fire recording system (prior to which records were submitted to government on paper and the national statistics from these based on sampling).

### LFB electronic data collection

LFB started collecting incident data electronically in April 1999 via its Incident Recording Information System (IRIS). This included fire incidents although not FDR1 data. FDR1 data was captured electronically from 1 January 2005. LFB began supplying data to the new national IRS on 3 November 2008 via its Incident Management System (IMS), which replaced the IRIS.

### Categories of fires

*A reportable fire is 'an event of uncontrolled burning involving flames, heat or smoke which was attended by a fire and rescue authority, or which was a late fire call'.*

The categories for fire have remained unchanged since the introduction of the FDR1. Fires are categorised as either Primary, Secondary, Chimney or Late Call.

**Primary fires** are more serious fires that harm people or cause damage to property. More information is collected about primary fires than other types of fire. In the changes to the FDR1 in 1994 the definition for primary fires was broadened to include a small number of fires where there was no fire damage but there was damage from heat and smoke.

Primary fires have one or more of the following characteristics:

- (a) all fires in buildings and vehicles that are not derelict or in outdoor structures,
- (b) any fires involving casualties or rescues,
- (c) any fire attended by five or more appliances.

A **late call** is when a fire and rescue authority is called to a fire when it is known, prior to the call, that the fire has already been extinguished. In this report, Late calls are included in the totals for primary fires. There are typically less than 20 late calls per year.

**Secondary fires** are less serious fires and less information is recorded about these fires. Secondary fires are the majority of outdoor fires including grassland and rubbish fires; unless they involve casualties or rescues, property loss or unless five or more appliances attend. Fires in derelict buildings are recorded as secondary fires.

Chimney fires are any fires in buildings where the flame was contained within the chimney structure and did not involve casualties, rescues or attendance by five or more pumping appliances.

Where fire crews record the motive for a fire they are categorised as follows:

- (a) Accidental fires, including those where the cause was not known or unspecified.
- (b) Deliberate fires, include those where deliberate ignition is merely suspected.

## Symbols and conventions used

### Inner and outer London

Where we have made reference to inner and outer London we are using the classification used by the Office of National Statistics (ONS).

Based on the classification used by ONS, there are 14 inner London Boroughs and 19 outer London boroughs, as follows:

**Inner London boroughs:** Camden, City of London, Hackney, Hammersmith and Fulham, Haringey, Islington, Kensington and Chelsea, Lambeth, Lewisham, Newham, Southwark, Tower Hamlets, Wandsworth and Westminster.

**Outer London boroughs:** Barking and Dagenham, Barnet, Bexley, Brent, Bromley, Croydon, Ealing, Enfield, Greenwich, Harrow, Havering, Hillingdon, Hounslow, Kingston upon Thames, Merton, Redbridge, Richmond upon Thames, Sutton and Waltham Forest.

### Symbols

The following symbols have been used throughout:

.. = not available or not applicable .

– = nil.

### Data tables

Some tables in this publication have been truncated in the number of years presented so that the tables remain readable. The full tables with all years data is available to download from the London Datastore at [data.london.gov.uk](https://data.london.gov.uk).

# Chapter 1 | Long term trends

This chapter looks at the long term time-series data for fires attended by the London Fire Brigade in Greater London since 1966. The only year since 1966 when data for 'all fires' isn't available is 1977 when, due to the fire service national strike that year, data was only available up until October.

## Fires in Greater London

(Table 1.1)

In 1966 the total number of fires was 30,436. The number of fires each year remained above 30,000 until 2008 when, for the first time, the number of fires fell below 1966 levels to 29,653.

For most of the 36 years between 1969 and 2005, the total number of fires has fluctuated between 40,000 and 50,000 fires a year. Those years where the number of fires were at their highest coincide with the years with notably hot summers with continuous dry periods which cause many more grass fires. Eight of the UK's 10 warmest years on record have happened since 2002.

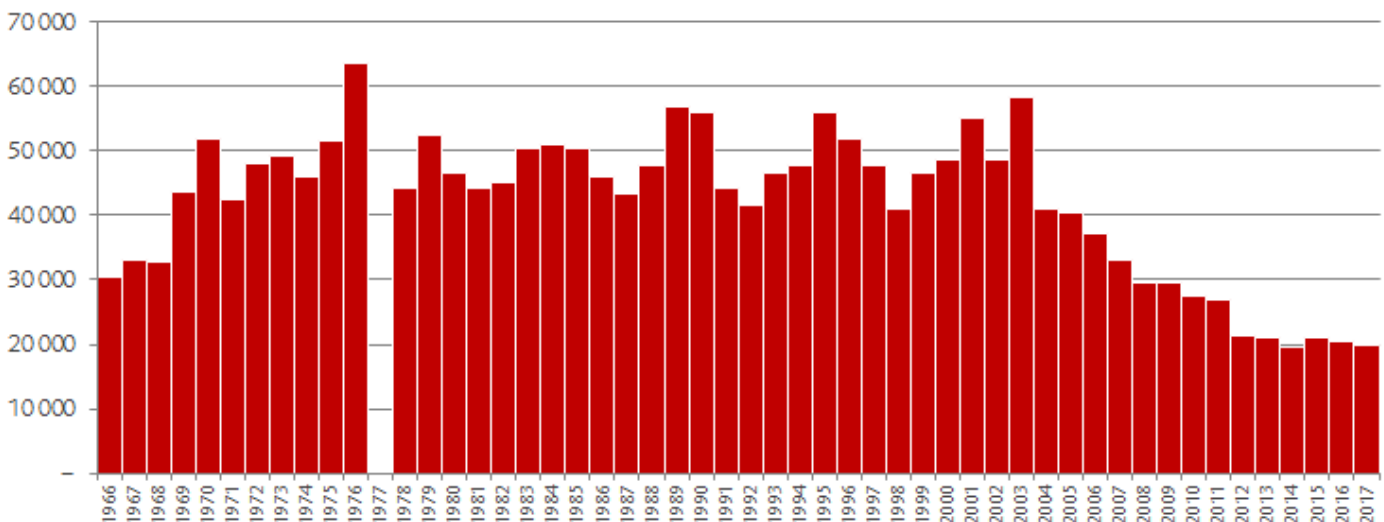
The years with the highest numbers of fires have been:

- 1976 – 63,524 fires
- 2003 – 58,233 fires
- 1989 – 56,893 fires
- 1995 – 55,962 fires
- 2001 – 55,063 fires

The longest period showing a continuing trend is the years from 2003 over which time the number of fires each year have consistently fallen.

The reduction in fires since 2001 is linked to the introduction of the first Community Safety Strategy which the LFEPA approved in September 2000<sup>1</sup>. This strategy changed the focus of the London Fire Brigade from being a mainly reactive emergency response service to a proactive service with fire prevention at the core of its activities.

**Chart 1: Total number of fires in Greater London, since 1966**

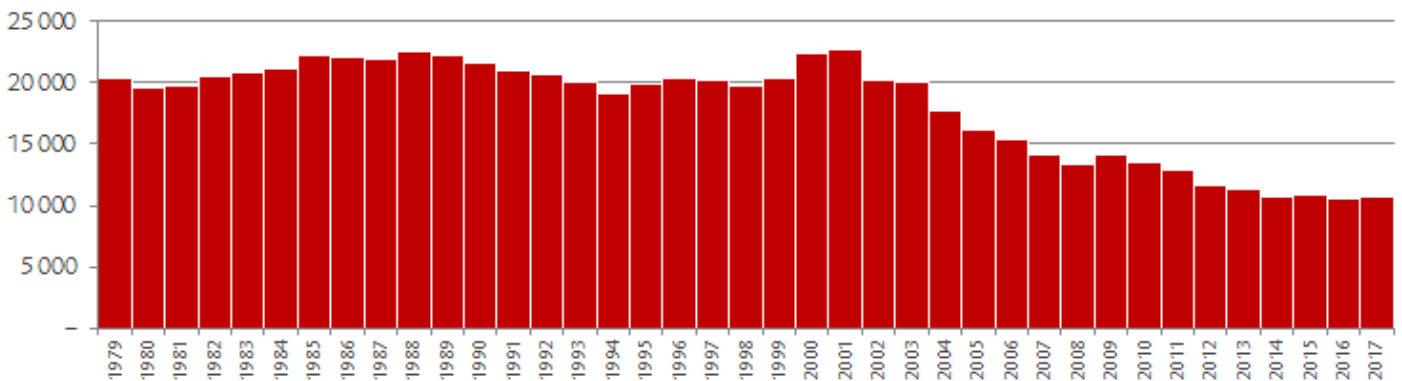


<sup>1</sup> Community Fire Safety Strategy; LFEPA report FEP9, 14 September 2000

## Primary fires

Between 1979 and 2003 the number of primary fires fluctuated between 20,000 and 22,000 fires per year. The most primary fires happened in 2001 (22,655). However, on average, primary fires since then have reduced, by around 850 fires per year. The number now is just over 10,000 a year – half the number that happened during the 1980s and 1990s. [Chart 2]

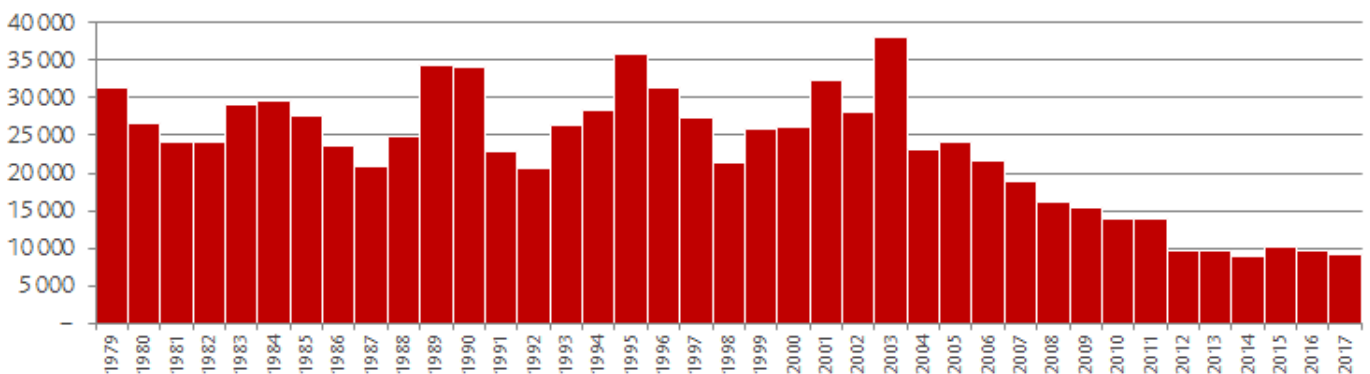
**Chart 2: Number of primary fires, since 1979**



## Secondary fires

Periods of high numbers of secondary fires coincide with dry and hot summers. This is due to an increase in grass fires that happen more frequently in dry and hot periods. The high number of secondary fires in 1995 and 2003 also coincide with heat waves in those years. Secondary fires now are significantly lower than they were a decade before. [Chart 3]

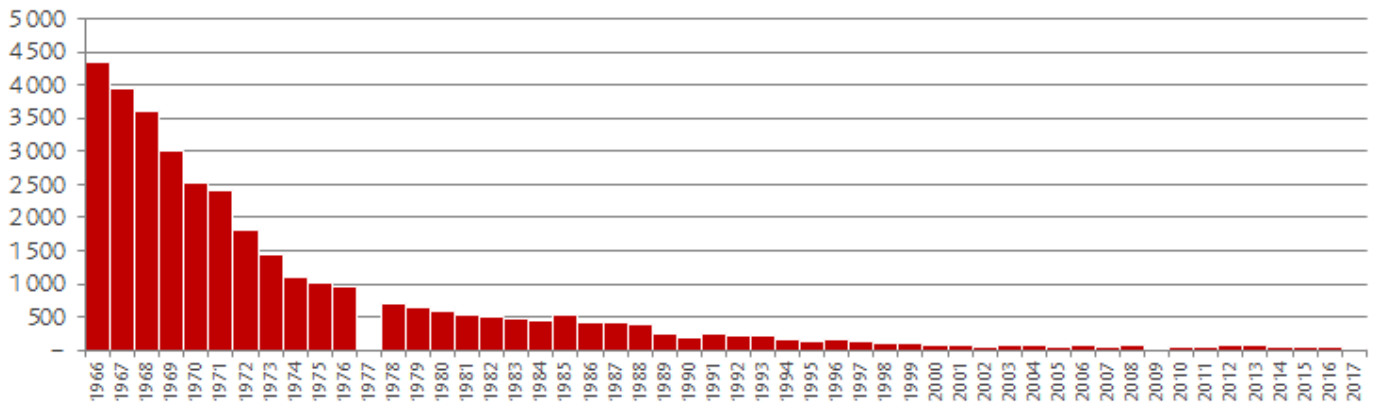
**Chart 3: Number of secondary fires, since 1979**



## Chimney fires

In the 1950s and 1960s open fires were a common means of household heating. However, the air pollution from coal and wood fuels caused smog – most notably the 'Great London Smog' in December 1952. The government introduced its first Clean Air Act in 1956 to control domestic smoke pollution by introducing smokeless zones, where smokeless fuels had to be burnt. This also encouraged many households to change to gas or electric heating systems, which resulted in a dramatic decrease in chimney fires.

**Chart 4: Number of chimney fires, since 1966**



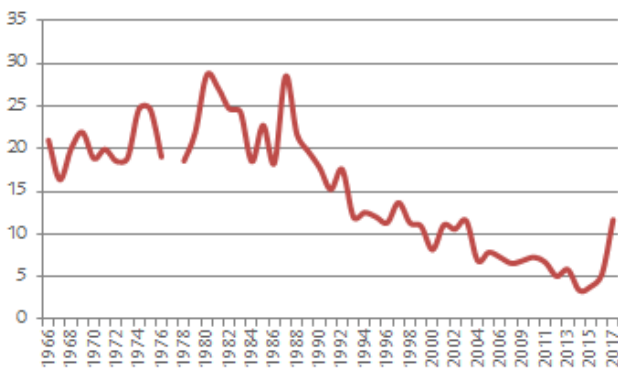
## Fire related deaths

(Table 1.2)

Fire fatalities include any fatal casualty which is the direct or indirect result of injuries caused by a fire incident. Even if the fatal casualty dies subsequently, any fatality whose cause is attributed to a fire is included in the Brigade's and government published statistics. There are also occasional cases where a Coroner may rule that the fire was not the cause of death. As a Coroner's inquest will not have been held for all fire fatalities in the latest year reported here, the number of fatalities is subject to revision.

The number of fire deaths in London have been falling steadily since the late 1980s. Numbers increased in 2017 because of the multiple deaths from the Grenfell Tower fire.

**Chart 5: Fire related fatalities per million resident population, since 1966**



The factors that influence the chances of a person being involved in a fire becoming a fire fatality are complex. The main contributors include:

- how early the fire is discovered
- how quickly the brigade are called
- the materials (and/or their volume) involved in the fire
- the size and construction of the room/building
- the proximity of the victim to the fire
- the alertness and mobility of the victim and whether the person is alone
- the arrival time and response of the brigade

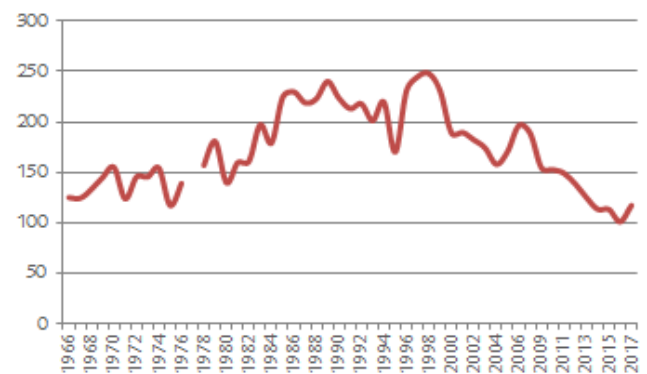
As well as work on fire prevention and an increase in smoke alarm ownership, legislative change has also contributed to the reduction in fire deaths. Most notably the Furniture and Furnishings (Fire Safety)

Regulations 1988 which improved the fire retardants of home furniture and reduced the amount of fatally toxic smoke when ignited.

## Fire related injuries

Between 1985 and 1999 the rate of fire injury per million resident population remained above 200 a year (with one exception in 1995). Since 2000 the rate of fire injury has been falling. Numbers of non-fatal casualties increased in 2017 partly because of those injured at the Grenfell Tower fire.

**Chart 6: Fire related injuries per million resident population, since 1966**



**Table 1.1 Time series; total number of fires in Greater London, since 1966**

*number*

	Primary fires	Secondary fires	Chimney fires	Not categorised (a)	Total
1966	14 825	11 268	4 343		30 436
1967	15 059	13 961	3 936		32 956
1968	13 550	15 770	3 602		32 922
1969	14 076	25 536	3 013	1 108	43 733
<b>1970</b>	<b>15 306</b>	<b>33 505</b>	<b>2 521</b>	<b>503</b>	<b>51 835</b>
1971	14 975	24 356	2 417	845	42 593
1972	15 963	30 364	1 813	19	48 159
1973	16 132	30 282	1 451	1 277	49 142
1974	15 397	28 800	1 108	742	46 047
1975	11 679	19 961	1 008	18 891	51 539
1976	14 387	32 261	964	15 912	63 524
1977 (b)	..	..	..	..	..
1978 (c)	..	..	703	43 433	44 136
1979	20 370	31 306	655		52 331
<b>1980</b>	<b>19 571</b>	<b>26 493</b>	<b>581</b>		<b>46 645</b>
1981	19 790	24 003	538		44 331
1982	20 551	24 162	502		45 215
1983	20 869	29 196	484		50 549
1984	21 133	29 504	439		51 076
1985	22 202	27 580	544		50 326
1986	22 119	23 521	430		46 070
1987	21 963	20 886	419		43 268
1988	22 550	24 789	394		47 733
1989	22 199	34 433	261		56 893
<b>1990</b>	<b>21 635</b>	<b>34 155</b>	<b>204</b>		<b>55 994</b>
1991	21 050	22 877	257		44 184
1992	20 684	20 732	222		41 638
1993	20 025	26 303	215		46 543
1994	19 080	28 463	150		47 693
1995	19 892	35 932	138		55 962
1996	20 414	31 380	165		51 959
1997	20 148	27 406	124		47 678
1998	19 677	21 295	99		41 071
1999	20 411	25 947	97		46 455

(a) During industrial disputes between 1969 and 1976 no details were recorded of the circumstances in which fire started

(b) Data is only available until 31 October 1977 (36, 151 fires and 700 chimney fires) due to a fire service national strike

(c) There is no data available on the split between primary and secondary fires for 1978

Table 1.1 Time series; total number of fires in Greater London, since 1966 (continued)

<i>number</i>	Primary fires	Secondary fires	Chimney fires	Not categorised (a)	Total
<b>2000</b>	<b>22 334</b>	<b>26 135</b>	<b>85</b>		<b>48 554</b>
2001	22 655	32 322	86		55 063
2002	20 271	28 213	60		48 544
2003	20 081	38 084	68		58 233
2004	17 788	23 023	72		40 883
2005	16 167	24 218	56		40 441
2006	15 373	21 674	66		37 113
2007	14 115	18 920	49		33 084
2008	13 372	16 211	70		29 653
2009	14 178	15 379	34		29 591
<b>2010</b>	<b>13 522</b>	<b>13 895</b>	<b>50</b>		<b>27 467</b>
2011	12 911	13 880	56		26 847
2012	11 678	9 697	68		21 443
2013	11 289	9 791	78		21 158
2014	10 676	8 898	48		19 622
2015	10 820	10 054	49		20 923
2016	10 587	9 766	37		20 390
2017	10 756	9 082	25		19 863

Table 1.2 Time series; fire related fatalities and injuries, since 1966

<i>number</i>	<i>number</i>		<i>number</i>	<i>rate</i>	
	Fatalities	Injuries		Population estimates	Fatality rate per million pop
1966	164	978	7 810 000	21.0	125.2
1967	127	966	7 761 000	16.4	124.5
1968	154	1 026	7 693 000	20.0	133.4
1969	167	1 106	7 619 000	21.9	145.2
<b>1970</b>	<b>142</b>	<b>1 168</b>	<b>7 530 000</b>	<b>18.9</b>	<b>155.1</b>
1971	150	933	7 529 400	19.9	123.9
1972	138	1 083	7 442 800	18.5	145.5
1973	139	1 072	7 362 400	18.9	145.6
1974	179	1 121	7 263 600	24.6	154.3
1975	177	842	7 179 000	24.7	117.3
1976	135	986	7 089 100	19.0	139.1
1977*	..	..	7 012 000		
1978	129	1 091	6 946 800	18.6	157.1
1979	151	1 246	6 887 600	21.9	180.9
<b>1980</b>	<b>196</b>	<b>958</b>	<b>6 850 600</b>	<b>28.6</b>	<b>139.8</b>
1981	185	1 087	6 805 600	27.2	159.7
1982	167	1 089	6 765 100	24.7	161.0
1983	164	1 333	6 753 000	24.3	197.4
1984	125	1 210	6 754 700	18.5	179.1
1985	154	1 521	6 767 000	22.8	224.8
1986	124	1 557	6 774 200	18.3	229.8
1987	193	1 482	6 765 600	28.5	219.0
1988	146	1 501	6 729 300	21.7	223.1
1989	133	1 621	6 751 600	19.7	240.1
<b>1990</b>	<b>121</b>	<b>1 521</b>	<b>6 798 800</b>	<b>17.8</b>	<b>223.7</b>
1991	104	1 457	6 829 300	15.2	213.3
1992	120	1 489	6 829 400	17.6	218.0
1993	82	1 378	6 844 500	12.0	201.3
1994	86	1 511	6 873 500	12.5	219.8
1995	83	1 177	6 913 100	12.0	170.3
1996	79	1 611	6 974 400	11.3	231.0
1997	96	1 718	7 014 800	13.7	244.9
1998	80	1 753	7 065 500	11.3	248.1
1999	78	1 651	7 153 900	10.9	230.8

Source: Population figures ONS mid-year estimates

\*Data is only available until 31 October 1977 due to a fire service national strike

Table 1.2 Time series; fire related fatalities and injuries, since 1966 (continued)

	<i>number</i>		<i>number</i>	<i>rate</i>	
	Fatalities	Injuries	Population estimates	Fatality rate per million pop	Injury rate per million pop
<b>2000</b>	<b>59</b>	<b>1 369</b>	<b>7 236 700</b>	<b>8.2</b>	<b>189.2</b>
2001	81	1 392	7 336 909	11.0	189.7
2002	78	1 346	7 381 870	10.6	182.3
2003	86	1 298	7 448 221	11.5	174.3
2004	52	1 193	7 542 613	6.9	158.2
2005	60	1 306	7 642 969	7.9	170.9
2006	56	1 515	7 701 603	7.3	196.7
2007	51	1 469	7 773 547	6.6	189.0
2008	41	1 271	7 869 882	5.2	161.5
2009	55	1 236	7 991 239	6.9	154.7
<b>2010</b>	<b>59</b>	<b>1 239</b>	<b>8 107 073</b>	<b>7.3</b>	<b>152.8</b>
2011	55	1 227	8 217 475	6.7	149.3
2012	42	1 153	8 308 369	5.1	138.8
2013	49	1 054	8 416 535	5.8	125.2
2014	29	972	8 556 566	3.4	113.6
2015	33	984	8 673 713	3.8	113.4
2016	46	889	8 787 892	5.2	101.2
2017	103	1 036	8 825 001	11.7	117.4

Source: Population figures ONS mid-year estimates

## Chapter 2 | Where fires happen

This chapter looks at the property types where fires occur, the reason for fire and the number of fires in each London borough. This chapter looks at the data since 2000 where more detailed electronic records are available.

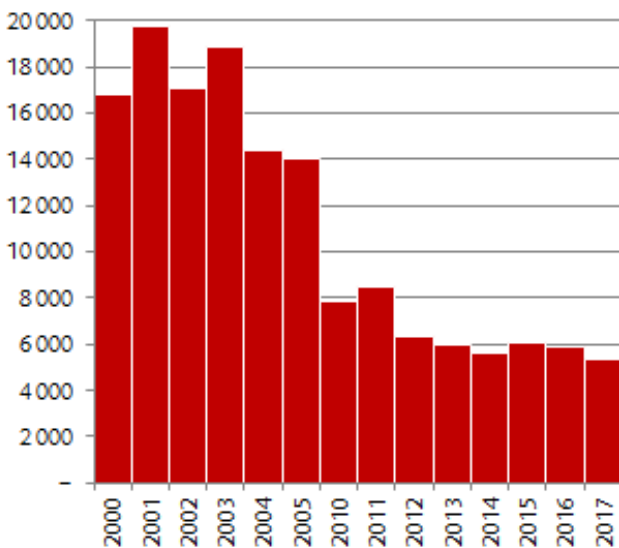
### Property types

(Table 2.1)

For many years, fires involving rubbish and waste were the largest group of fires. In 2001, the highest year for rubbish fires in recent decades, the number was 19,741 (36 per cent). In comparison, fires in dwellings in 2001 accounted for 16 per cent of fires and fires involving transport and derelict vehicles accounted for 25 per cent of fires.

Rubbish fires, and those involving transport and derelict vehicles, have seen a dramatic decline over the last 15 years. [Chart 7]

**Chart 7: Fires involving rubbish, since 2000**

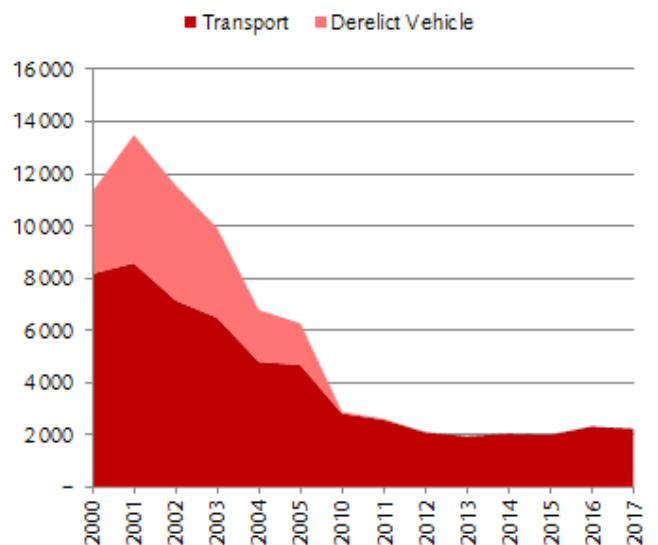


We attribute the reduction in rubbish fires to our work on arson prevention, work by local authorities to remove rubbish and to stop fly tipping and an increase in social responsibility towards recycling and waste disposal.

Fires in transport and derelict vehicles have also reduced over the last 15 years. [Chart 8] The number

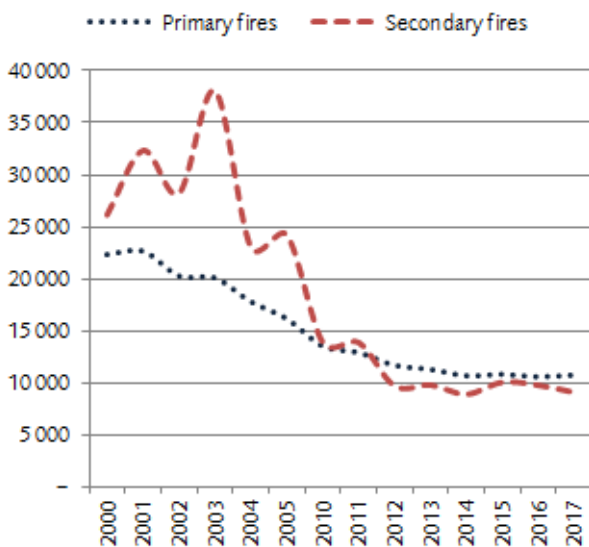
of fires in derelict vehicles has been linked to the prices for scrap metal; when scrap metal prices are very low and old cars have little or no residual value, derelict car fires are higher.

**Chart 8: Total number of fires involving transport and derelict vehicles, since 2000**



The reductions in rubbish and vehicle fires has led to a change in the distribution between primary and secondary fires. In most years the number of secondary fires is higher than the number of primary fires (by as much as 53 per cent). In 2012 this trend reversed with the number of primary fires exceeding the number of secondary fires. This reversal has only happened once before, in 1987. [Chart 9]

**Chart 9: Number of primary and secondary fires, since 2000**



### Fires in buildings

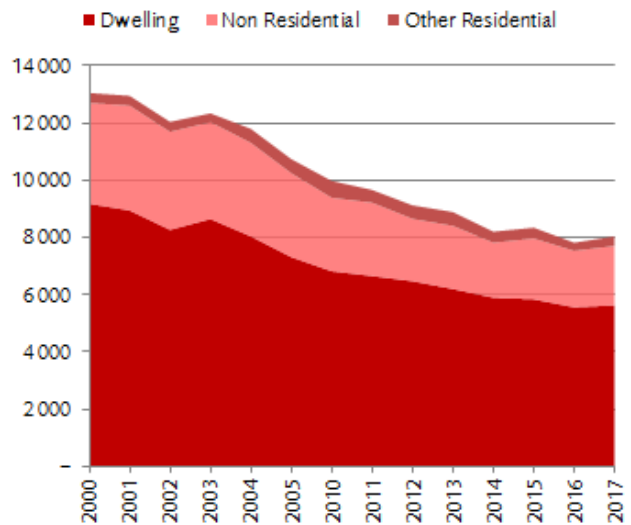
Primary fires in buildings are categorised as either dwellings, other residential or non-residential:

- **Dwellings** include all types of private residences and homes. It covers houses, flats, houses in multiple occupation (HMOs) and self-contained sheltered housing.
- **Other residential** covers places of communal living and where people receive care, like residential care homes. It also includes short term accommodation residential accommodation like student halls, hostels and hotels.
- **Non-residential** includes all types of commercial building as well as private outdoor structures and outhouses.

Where a building has one or more uses, we record the property type for the area where the fire started; for example where a fire occurs in a shop with a flat above, we would record a fire in a shop.

Fires in buildings have reduced over the last 15 years. [Chart 10]

**Chart 10: Primary fires in buildings, since 2000**



Primary fires in non-residential buildings have seen the largest decrease, with a reduction of over 40 per cent since 2000. Fires in dwelling have reduced by 39 per cent. The number of fires in other residential buildings has changed less significantly over the last 15 years (down six per cent).

### Fire motive

(Table 2.2)

Firefighters record the suspected reason (motive) for the start of a fire. Fires are categorised as: accidental, deliberate or unknown, according to the probable cause, as observed at the scene.

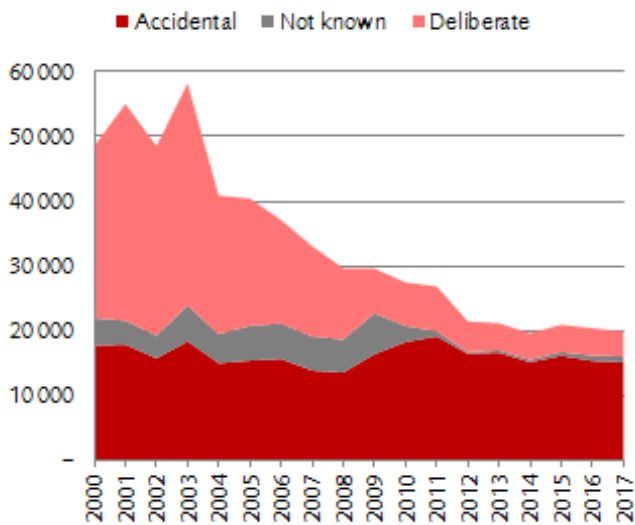
Deliberate fires are those where a fire is suspected to have been started deliberately (but not always with a malicious intent), for example some fires are started by children.

The motive reflects the nature of the '*uncontrolled burning*'. For example, whilst a bonfire will be started deliberately, if it gets out of control and sets light to a nearby shed, the motive will be recorded as accidental; the uncontrolled shed fire was an accidental consequence of the bonfire.

The fall in deliberate fires since 2003 reflects the reduction seen in rubbish and derelict vehicle fires

(where the motives for these are often deliberate).  
[Chart 11]

**Chart 11: Fires by motive, since 2000**



The perceived increase in accidental fires around 2009 is linked to a policy change around the recording of fires of 'unknown' motive. If a fire crew are not sure about the suspected cause of the fire, they will now consult with a fire investigation officer so that a motive can be determined, rather than record the incident as not known. In national fire statistics, the not known motive is grouped with accidental as this is the most likely motive when the cause is unclear (as deliberately started fires are usually more discernible).

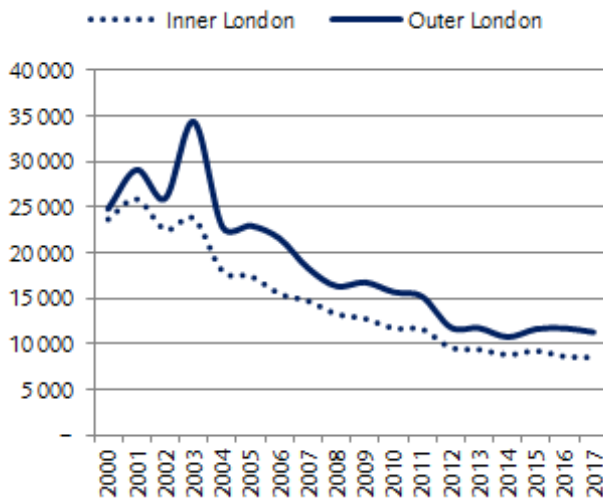
## Fires in the London boroughs

### All fires

(Table 2.3)

The number of all fires have been reducing at a similar rate when comparing inner and outer London. [Chart 12]

**Chart 12: All fires, inner and outer London, since 2000**



The reduction rates within the boroughs have been different. The boroughs with the greatest numbers of fires – when comparing 2000 with 2017 – are shown in the table below.

Extract from table 2.3:

#### Number of fires for the top five inner and outer London Boroughs, 2000 and 2017

Top 5 inner London boroughs				
	2000		2017	
Tower Hamlets	3 211	Westminster	988	
Newham	3 011	Tower Hamlets	878	
Hackney	2 662	Newham	806	
Southwark	2 276	Southwark	780	
Lambeth	2 178	Lambeth	675	

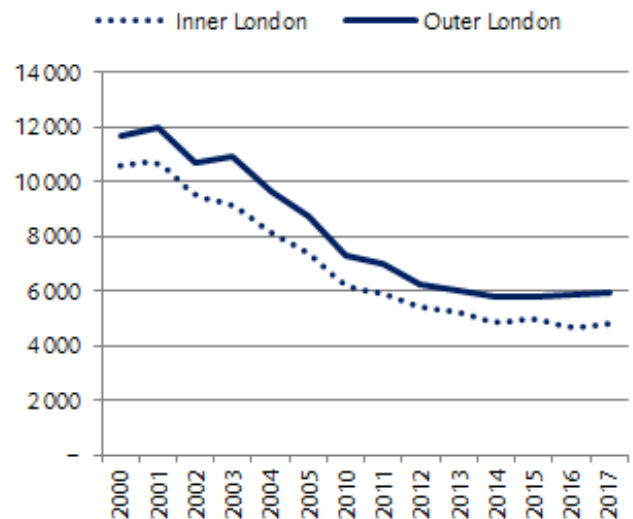
Top 5 outer London boroughs				
	2000		2017	
Greenwich	2 341	Hillingdon	817	
Barking and Dagenham	1 936	Croydon	812	
Croydon	1 747	Ealing	745	
Hillingdon	1 632	Bromley	744	
Bromley	1 623	Enfield	732	

### Primary fires

(Table 2.5)

The change in the number of primary fires in inner and outer London follows a similar pattern to all fires, with similar reductions in both areas and with there being more primary fires in outer London compared to inner London.

**Chart 13: Primary fires, inner and outer London, since 2000**



The boroughs with the greatest numbers of primary fires – when comparing 2000 with 2017 – are shown in the table below.

Extract from table 2.5: Number of primary fires for the top five inner and outer London Boroughs, 2000 and 2017

Top 5 inner London boroughs				
	2000		2017	
Newham	1 257	Southwark	458	
Tower Hamlets	987	Westminster	457	
Southwark	966	Newham	456	
Lambeth	938	Tower Hamlets	436	
Hackney	934	Wandsworth	391	

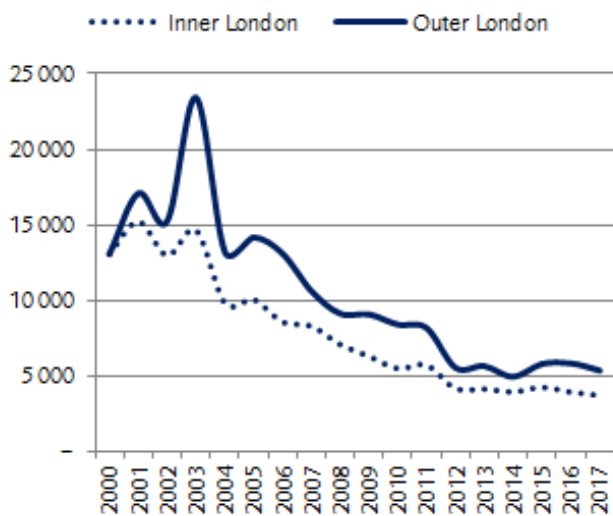
Top 5 outer London boroughs				
	2000		2017	
Croydon	893	Croydon	486	
Greenwich	843	Hillingdon	472	
Ealing	817	Barnet	402	
Brent	817	Ealing	395	
Hillingdon	795	Enfield	393	

### Secondary fires

(Table 2.6)

The change in the number of secondary fires in inner and outer London follows a similar pattern to all fires, with similar reductions in both areas. Outer London makes up around 80 percent of London's area, but has a lower proportion of secondary fires (58 percent for the five years to 2017). [Chart 14]

**Chart 14: Secondary fires, inner and outer London, five years to 2017**



The boroughs with the greatest numbers of secondary fires – when comparing 2000 with 2017 – are set out in the table below.

**Extract from table 2.6:  
Number of secondary fires for the top 5 inner and outer London Boroughs; 2000 and 2017**

#### Top 5 inner London boroughs

	2000		2017
Tower Hamlets	2 242	Westminster	529
Newham	1 753	Tower Hamlets	441
Southwark	1 672	Newham	350
Hackney	1 366	Haringey	327
Lambeth	1 237	Southwark	321

#### Top 5 outer London boroughs

	2000		2017
Greenwich	1 447	Waltham Forest	397
Barking and Dagenham	1 219	Bromley	368
Bromley	1 000	Ealing	350
Hounslow	869	Hillingdon	345
Bexley	847	Havering	340

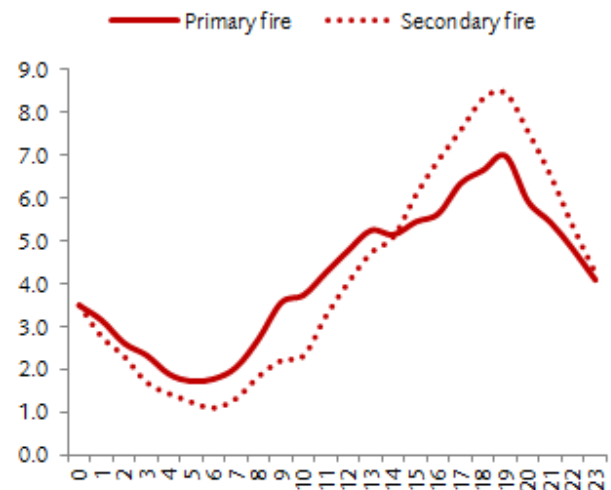
### When fires happen

#### Hour of the day

(Table 2.9)

Primary and secondary fires follow a similar daily profile. The lowest period is at 6am and the highest period is at 7pm. [Chart 15]

**Chart 15: Proportion of fires (%) by hour of the day, five years to 2017**



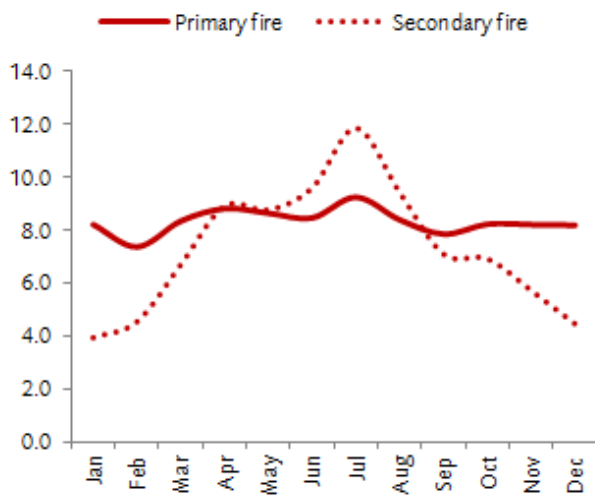
### Month of the year

(Table 2.10)

Primary fires vary little throughout the year, with slightly more in the spring and summer months compared to autumn and winter.

Contrastingly, there is significant seasonality with secondary fires, mostly due to the increase in outdoor fires (grass and rubbish) in periods of hot and dry weather. [Chart 16]

**Chart 16: Proportion of fires (%) by month of the year, five years to 2017**



**Table 2.1 Fires, by fire and property type categories, since 2000**

*number*

	2000	2005	2010	2011	2012	2013	2014	2015	2016	2017
<b>Total fires</b>	<b>48 554</b>	<b>40 441</b>	<b>27 467</b>	<b>26 847</b>	<b>21 443</b>	<b>21 158</b>	<b>19 622</b>	<b>20 923</b>	<b>20 390</b>	<b>19 863</b>
<b>Chimney fires</b>	<b>85</b>	<b>56</b>	<b>50</b>	<b>56</b>	<b>68</b>	<b>78</b>	<b>48</b>	<b>49</b>	<b>37</b>	<b>25</b>
Dwelling	77	51	47	52	62	68	44	41	33	20
Other Residential	–	–	1	1	–	–	–	–	1	1
Non Residential	8	5	2	3	6	10	4	7	3	4
<b>Primary fires</b>	<b>22 334</b>	<b>16 167</b>	<b>13 522</b>	<b>12 911</b>	<b>11 678</b>	<b>11 289</b>	<b>10 676</b>	<b>10 820</b>	<b>10 587</b>	<b>10 756</b>
Dwelling	9 178	7 311	6 821	6 650	6 471	6 197	5 893	5 840	5 558	5 624
Other Residential	351	491	591	446	472	481	386	377	286	329
Non Residential	3 524	2 936	2 566	2 565	2 180	2 212	1 924	2 126	1 974	2 083
Transport	8 171	4 679	2 816	2 575	2 094	1 942	2 039	2 001	2 316	2 232
Outdoor	1 110	750	728	675	461	457	434	476	453	488
<b>Secondary fires</b>	<b>26 135</b>	<b>24 218</b>	<b>13 895</b>	<b>13 880</b>	<b>9 697</b>	<b>9 791</b>	<b>8 898</b>	<b>10 054</b>	<b>9 766</b>	<b>9 082</b>
Rubbish	16 784	13 993	7 860	8 507	6 292	5 945	5 649	6 092	5 920	5 315
Open Land	4 056	6 988	5 598	4 737	2 957	3 361	2 782	3 473	3 381	3 297
Other Outdoor Structure	1 144	1 155	308	518	389	439	433	455	420	451
Derelict Building	1 006	488	66	76	46	35	24	18	29	12
Derelict Vehicle	3 145	1 594	63	42	13	11	10	16	16	7

Table 2.2 Fires, by property type category and motive, since 2000

<i>number</i>										
	2000	2005	2010	2011	2012	2013	2014	2015	2016	2017
<b>All fires</b>	<b>48 554</b>	<b>40 441</b>	<b>27 467</b>	<b>26 847</b>	<b>21 443</b>	<b>21 158</b>	<b>19 622</b>	<b>20 923</b>	<b>20 388</b>	<b>19 863</b>
Accidental	17 675	15 373	18 237	19 131	16 411	16 614	15 124	16 111	15 313	15 107
Deliberate	26 614	19 653	6 721	6 950	4 719	4 166	4 085	4 223	4 218	3 836
Not known	4 265	5 415	2 509	766	313	378	412	590	857	920
<b>Chimney Fire Total</b>	<b>85</b>	<b>56</b>	<b>50</b>	<b>56</b>	<b>68</b>	<b>78</b>	<b>48</b>	<b>49</b>	<b>37</b>	<b>25</b>
Accidental	79	53	50	56	68	76	48	48	37	25
Deliberate	4					2				
Not known	2	3						1		
<b>Primary Fire Total</b>	<b>22 334</b>	<b>16 167</b>	<b>13 522</b>	<b>12 911</b>	<b>11 678</b>	<b>11 289</b>	<b>10 676</b>	<b>10 820</b>	<b>10 587</b>	<b>10 756</b>
Accidental	11 730	9 710	10 012	9 673	9 443	9 381	8 743	8 760	8 322	8 570
Deliberate	9 305	5 946	3 048	3 078	2 163	1 783	1 785	1 878	2 021	1 902
Not known	1 299	511	462	160	72	125	147	182	244	284
<b>Secondary Fire Total</b>	<b>26 135</b>	<b>24 218</b>	<b>13 895</b>	<b>13 880</b>	<b>9 697</b>	<b>9 791</b>	<b>8 898</b>	<b>10 054</b>	<b>9 764</b>	<b>9 082</b>
Accidental	5 866	5 610	8 175	9 402	6 900	7 157	6 333	7 303	6 954	6 512
Deliberate	17 305	13 707	3 673	3 872	2 556	2 381	2 300	2 345	2 197	1 934
Not known	2 964	4 901	2 047	606	241	253	265	407	613	636

**Table 2.3 All fires, by London borough, since 2000**

*number*

	2000	2005	2010	2011	2012	2013	2014	2015	2016	2017
<b>London total</b>	<b>48 554</b>	<b>40 441</b>	<b>27 467</b>	<b>26 847</b>	<b>21 443</b>	<b>21 158</b>	<b>19 622</b>	<b>20 923</b>	<b>20 388</b>	<b>19 863</b>
<b>Inner London</b>	<b>23 695</b>	<b>17 449</b>	<b>11 748</b>	<b>11 636</b>	<b>9 609</b>	<b>9 398</b>	<b>8 841</b>	<b>9 257</b>	<b>8 635</b>	<b>8 539</b>
Camden	1 329	1 070	799	743	610	731	630	639	592	589
City of London	149	92	101	107	89	104	97	101	89	79
Hackney	2 276	1 508	783	854	748	686	696	668	604	646
Hammersmith and Fulham	800	628	509	532	409	408	360	393	385	344
Haringey	1 360	1 149	836	804	595	544	560	650	643	638
Islington	1 706	1 183	675	750	554	537	563	568	465	534
Kensington and Chelsea	650	531	399	359	339	320	315	325	286	318
Lambeth	2 178	1 299	922	937	834	792	787	751	762	675
Lewisham	1 592	1 358	946	855	661	717	631	712	610	633
Newham	3 011	1 809	1 364	1 215	901	929	822	803	876	806
Southwark	2 662	1 822	1 197	1 250	929	943	901	920	784	780
Tower Hamlets	3 211	2 810	1 438	1 464	1 173	1 029	977	1 171	1 043	878
Wandsworth	1 186	959	773	735	686	668	576	649	566	631
Westminster	1 585	1 231	1 006	1 031	1 081	990	926	907	930	988
<b>Outer London</b>	<b>24 847</b>	<b>22 992</b>	<b>15 719</b>	<b>15 211</b>	<b>11 834</b>	<b>11 760</b>	<b>10 781</b>	<b>11 666</b>	<b>11 749</b>	<b>11 310</b>
Barking and Dagenham	1 936	1 770	1 072	961	651	715	603	675	673	610
Barnet	1 295	1 242	869	918	719	710	609	721	632	682
Bexley	1 327	1 467	945	701	550	501	542	664	580	589
Brent	1 301	1 069	710	795	644	687	586	664	665	677
Bromley	1 747	1 787	1 031	1 131	803	715	750	902	950	744
Croydon	1 623	1 410	1 101	1 176	952	905	839	820	871	812
Ealing	1 463	1 350	873	872	756	752	654	694	744	745
Enfield	1 450	1 470	963	942	825	817	724	734	752	732
Greenwich	2 341	2 078	1 256	1 191	796	786	679	719	692	727
Harrow	681	567	433	457	371	372	331	339	342	403
Havering	1 372	1 542	901	826	532	568	621	662	706	594
Hillingdon	1 632	1 252	955	1 019	869	829	746	812	876	817
Hounslow	1 562	1 269	946	764	670	674	566	680	656	644
Kingston upon Thames	551	477	421	352	299	301	299	257	291	286
Merton	986	765	561	490	399	432	381	400	413	368
Redbridge	1 057	1 112	883	795	574	587	561	577	587	564
Richmond upon Thames	535	447	391	393	322	296	299	296	294	293
Sutton	828	755	568	541	435	473	406	381	356	353
Waltham Forest	1 160	1 163	840	887	667	640	585	669	669	670

**Table 2.4 Chimney fires, by London borough, since 2000**

<i>number</i>										
	2000	2005	2010	2011	2012	2013	2014	2015	2016	2017
<b>London total</b>	<b>85</b>	<b>56</b>	<b>50</b>	<b>56</b>	<b>68</b>	<b>78</b>	<b>48</b>	<b>49</b>	<b>37</b>	<b>25</b>
<b>Inner London</b>	<b>34</b>	<b>17</b>	<b>14</b>	<b>13</b>	<b>16</b>	<b>25</b>	<b>12</b>	<b>21</b>	<b>8</b>	<b>7</b>
Camden	5	2	2	–	3	3	–	2	1	–
City of London	–	–	–	–	–	–	–	–	–	–
Hackney	3	2	–	2	1	–	3	3	1	–
Hammersmith and Fulham	1	–	–	–	2	1	–	–	1	–
Haringey	2	2	3	1	1	2	2	3	1	1
Islington	4	1	–	1	1	3	1	1	–	–
Kensington and Chelsea	3	–	2	–	1	2	–	3	–	–
Lambeth	3	–	1	2	2	2	2	2	–	1
Lewisham	2	2	–	–	3	3	1	2	2	1
Newham	1	3	1	–	–	1	1	–	–	–
Southwark	3	–	1	2	–	3	1	–	–	1
Tower Hamlets	3	1	–	–	–	–	–	1	–	1
Wandsworth	1	4	3	4	2	3	1	2	–	–
Westminster	3	–	1	1	–	2	–	2	2	2
<b>Outer London</b>	<b>51</b>	<b>39</b>	<b>36</b>	<b>43</b>	<b>52</b>	<b>53</b>	<b>36</b>	<b>28</b>	<b>29</b>	<b>18</b>
Barking and Dagenham	–	–	1	1	–	1	1	–	2	–
Barnet	2	1	2	3	4	4	1	3	2	–
Bexley	3	4	–	2	1	1	1	4	2	–
Brent	2	–	–	2	1	2	1	–	2	–
Bromley	4	7	6	5	8	8	3	3	–	1
Croydon	7	2	2	3	7	7	1	2	1	1
Ealing	–	3	1	2	1	1	–	–	–	–
Enfield	3	5	1	4	2	2	4	2	2	1
Greenwich	1	3	1	2	6	–	1	1	1	2
Harrow	1	–	1	1	2	–	2	1	1	1
Havering	6	4	1	1	2	2	4	2	2	2
Hillingdon	3	–	5	4	1	4	3	1	1	–
Hounslow	5	2	–	3	3	1	2	1	–	–
Kingston upon Thames	4	1	2	2	1	3	1	–	2	1
Merton	1	2	2	–	2	3	3	1	2	1
Redbridge	1	2	1	1	1	3	1	1	2	–
Richmond upon Thames	2	2	2	1	2	8	3	2	4	4
Sutton	5	–	5	3	5	1	1	2	3	3
Waltham Forest	1	1	3	3	3	2	3	2	–	1

Table 2.5 Primary fires, by London borough, since 2000

<i>number</i>										
	2000	2005	2010	2011	2012	2013	2014	2015	2016	2017
<b>London total</b>	<b>22 334</b>	<b>16 167</b>	<b>13 522</b>	<b>12 911</b>	<b>11 678</b>	<b>11 289</b>	<b>10 675</b>	<b>10 820</b>	<b>10 587</b>	<b>10 756</b>
<b>Inner London</b>	<b>10 603</b>	<b>7 389</b>	<b>6 246</b>	<b>5 912</b>	<b>5 439</b>	<b>5 237</b>	<b>4 883</b>	<b>4 983</b>	<b>4 700</b>	<b>4 823</b>
Camden	708	563	473	407	390	422	358	367	321	360
City of London	115	57	68	83	73	78	67	75	61	62
Hackney	907	635	431	484	415	413	412	388	351	369
Hammersmith and Fulham	499	384	315	326	260	265	228	245	261	233
Haringey	705	547	427	396	321	308	310	355	336	310
Islington	766	501	384	410	329	300	320	331	275	302
Kensington and Chelsea	416	293	261	245	246	217	232	221	213	237
Lambeth	938	716	536	566	567	484	455	431	424	382
Lewisham	776	546	512	437	414	405	365	410	362	370
Newham	1 257	671	532	491	427	478	408	388	439	456
Southwark	987	613	628	561	512	478	467	481	444	458
Tower Hamlets	966	688	596	538	493	452	402	435	419	436
Wandsworth	629	461	438	435	417	420	369	411	350	391
Westminster	934	714	645	533	575	517	490	445	444	457
<b>Outer London</b>	<b>11 724</b>	<b>8 778</b>	<b>7 276</b>	<b>6 999</b>	<b>6 239</b>	<b>6 052</b>	<b>5 793</b>	<b>5 837</b>	<b>5 885</b>	<b>5 927</b>
Barking and Dagenham	717	546	346	338	301	293	260	305	327	297
Barnet	682	582	470	449	424	415	353	398	364	402
Bexley	477	389	365	311	304	247	267	298	271	293
Brent	795	576	428	413	407	402	374	421	370	388
Bromley	743	570	437	446	378	351	329	312	394	375
Croydon	843	632	611	633	509	471	471	442	489	486
Ealing	817	612	501	475	408	414	397	369	389	395
Enfield	703	586	470	455	419	432	392	384	397	393
Greenwich	893	595	487	474	396	377	386	376	372	391
Harrow	389	276	242	243	211	226	210	185	182	223
Havering	577	410	327	320	240	253	261	269	296	252
Hillingdon	817	543	486	513	446	429	420	424	489	472
Hounslow	688	530	395	356	342	335	308	337	311	336
Kingston upon Thames	312	251	226	167	163	168	168	153	176	139
Merton	457	297	261	237	218	211	199	218	199	170
Redbridge	539	442	402	335	296	278	299	285	264	306
Richmond upon Thames	280	204	193	193	178	172	175	175	163	163
Sutton	386	275	269	265	249	256	222	179	184	174
Waltham Forest	609	462	360	376	350	322	302	307	248	272

Table 2.6 Secondary fires, by London borough, since 2000

*number*

	2000	2005	2010	2011	2012	2013	2014	2015	2016	2017
<b>London total</b>	<b>26 135</b>	<b>24 218</b>	<b>13 895</b>	<b>13 880</b>	<b>9 697</b>	<b>9 791</b>	<b>8 898</b>	<b>10 054</b>	<b>9 764</b>	<b>9 082</b>
<b>Inner London</b>	<b>13 058</b>	<b>10 043</b>	<b>5 488</b>	<b>5 711</b>	<b>4 154</b>	<b>4 136</b>	<b>3 946</b>	<b>4 253</b>	<b>3 927</b>	<b>3 709</b>
Camden	616	505	324	336	217	306	272	270	270	229
City of London	34	35	33	24	16	26	30	26	28	17
Hackney	1 366	871	352	368	332	273	281	277	252	277
Hammersmith and Fulham	300	244	194	206	147	142	132	148	123	111
Haringey	653	600	406	407	273	234	248	292	306	327
Islington	936	681	291	339	224	234	242	236	190	232
Kensington and Chelsea	231	238	136	114	92	101	83	101	73	81
Lambeth	1 237	583	385	369	265	306	330	318	338	292
Lewisham	814	810	434	418	244	309	265	300	246	262
Newham	1 753	1 135	831	724	474	450	413	415	437	350
Southwark	1 672	1 209	568	687	417	462	433	439	340	321
Tower Hamlets	2 242	2 121	842	926	680	577	575	735	624	441
Wandsworth	556	494	332	296	267	245	206	236	216	240
Westminster	648	517	360	497	506	471	436	460	484	529
<b>Outer London</b>	<b>13 072</b>	<b>14 175</b>	<b>8 407</b>	<b>8 169</b>	<b>5 543</b>	<b>5 655</b>	<b>4 952</b>	<b>5 801</b>	<b>5 835</b>	<b>5 365</b>
Barking and Dagenham	1 219	1 224	725	622	350	421	342	370	344	313
Barnet	611	659	397	466	291	291	255	320	266	280
Bexley	847	1 074	580	388	245	253	274	362	307	296
Brent	504	493	282	380	236	283	211	243	293	289
Bromley	1 000	1 210	588	680	417	356	418	587	556	368
Croydon	773	776	488	540	436	427	367	376	381	325
Ealing	646	735	371	395	347	337	257	325	355	350
Enfield	744	879	492	483	404	383	328	348	353	338
Greenwich	1 447	1 480	768	715	394	409	292	342	319	334
Harrow	291	291	190	213	158	146	119	153	159	179
Havering	789	1 128	573	505	290	313	356	391	408	340
Hillingdon	812	709	464	502	422	396	323	387	386	345
Hounslow	869	737	551	405	325	338	256	342	345	308
Kingston upon Thames	235	225	193	183	135	130	130	104	113	146
Merton	528	466	298	253	179	218	179	181	212	197
Redbridge	517	668	480	459	277	306	261	291	321	258
Richmond upon Thames	253	241	196	199	142	116	121	119	127	126
Sutton	437	480	294	273	181	216	183	200	169	176
Waltham Forest	550	700	477	508	314	316	280	360	421	397

**Table 2.7 Fire related fatalities, by London borough, since 2000**

*number*

	2000	2005	2010	2011	2012	2013	2014	2015	2016	2017
<b>London total</b>	<b>59</b>	<b>60</b>	<b>59</b>	<b>55</b>	<b>42</b>	<b>49</b>	<b>29</b>	<b>33</b>	<b>46</b>	<b>103</b>
<b>Inner London</b>	<b>23</b>	<b>27</b>	<b>26</b>	<b>20</b>	<b>19</b>	<b>26</b>	<b>10</b>	<b>16</b>	<b>23</b>	<b>86</b>
Camden	3	2	4	–	2	2	–	1	2	3
City of London	–	–	–	–	–	1	–	–	–	–
Hackney	5	4	2	1	2	1	2	1	1	1
Hammersmith and Fulham	1	1	2	2	2	4	–	2	1	–
Haringey	–	2	2	2	–	2	1	1	3	3
Islington	1	3	3	–	2	1	–	–	3	–
Kensington and Chelsea	3	–	–	1	1	–	–	–	2	72
Lambeth	1	5	1	1	4	2	–	2	1	3
Lewisham	–	3	3	2	1	1	4	–	2	–
Newham	3	1	2	2	–	4	1	4	1	1
Southwark	1	1	3	5	2	2	–	2	3	–
Tower Hamlets	3	–	1	2	1	1	1	1	–	1
Wandsworth	2	3	2	1	–	3	–	2	3	1
Westminster	–	2	1	1	2	2	1	–	1	1
<b>Outer London</b>	<b>36</b>	<b>33</b>	<b>33</b>	<b>35</b>	<b>23</b>	<b>23</b>	<b>19</b>	<b>17</b>	<b>23</b>	<b>17</b>
Barking and Dagenham	–	1	1	2	1	–	1	–	1	2
Barnet	3	1	3	2	1	1	1	1	–	1
Bexley	3	–	1	1	–	–	–	1	–	–
Brent	–	1	2	8	3	2	–	1	3	–
Bromley	5	–	4	2	3	–	1	1	2	1
Croydon	1	2	3	2	2	1	3	2	1	–
Ealing	2	2	5	2	2	1	2	4	3	1
Enfield	2	2	1	–	2	4	1	–	1	3
Greenwich	2	–	3	3	1	2	2	1	3	1
Harrow	6	1	2	–	–	–	2	–	–	–
Havering	–	–	–	1	2	1	–	–	1	4
Hillingdon	–	10	–	1	1	4	–	–	–	1
Hounslow	–	2	1	2	2	3	1	3	1	–
Kingston upon Thames	2	1	–	2	–	–	1	1	1	1
Merton	1	–	1	–	–	1	–	–	1	–
Redbridge	3	1	2	2	–	–	1	1	1	–
Richmond upon Thames	1	2	–	–	2	–	–	–	1	–
Sutton	2	2	2	–	–	2	–	1	1	1
Waltham Forest	3	5	2	5	1	1	3	–	2	1

**Table 2.8 Fire related injuries, by London borough, since 2000**

*number*

	2005	2010	2011	2012	2013	2014	2015	2016	2017
<b>London total</b>	<b>1 306</b>	<b>1 239</b>	<b>1 227</b>	<b>1 153</b>	<b>1 054</b>	<b>972</b>	<b>984</b>	<b>889</b>	<b>1 036</b>
<b>Inner London</b>	<b>599</b>	<b>632</b>	<b>555</b>	<b>537</b>	<b>500</b>	<b>491</b>	<b>455</b>	<b>390</b>	<b>533</b>
Camden	35	29	40	33	42	34	24	18	17
City of London	3	1	–	3	–	7	1	4	1
Hackney	52	58	43	56	28	30	37	31	30
Hammersmith and Fulham	38	26	17	31	18	32	14	27	50
Haringey	49	52	55	50	29	47	42	14	41
Islington	37	44	34	20	22	26	23	31	30
Kensington and Chelsea	29	43	28	31	11	11	45	26	106
Lambeth	51	41	48	55	57	53	46	36	29
Lewisham	66	83	47	64	72	36	41	39	40
Newham	65	62	60	34	38	40	23	38	47
Southwark	29	42	62	34	60	44	51	45	31
Tower Hamlets	54	54	25	53	43	29	39	16	31
Wandsworth	37	53	50	35	40	51	42	40	43
Westminster	54	44	46	38	40	51	27	25	37
<b>Outer London</b>	<b>707</b>	<b>607</b>	<b>672</b>	<b>616</b>	<b>554</b>	<b>481</b>	<b>529</b>	<b>499</b>	<b>503</b>
Barking and Dagenham	43	38	25	45	32	24	22	28	28
Barnet	48	38	37	34	32	21	32	28	48
Bexley	32	21	33	19	18	11	19	28	25
Brent	51	48	53	37	40	43	51	38	30
Bromley	26	22	39	37	23	20	24	20	19
Croydon	53	54	59	72	60	52	48	34	45
Ealing	72	35	45	37	44	54	35	41	37
Enfield	43	37	40	40	48	37	51	45	59
Greenwich	41	29	38	43	43	22	39	22	27
Harrow	34	43	28	14	18	10	8	21	14
Havering	17	24	19	30	19	30	26	20	26
Hillingdon	40	25	42	32	25	25	28	40	26
Hounslow	42	44	44	40	37	24	34	36	31
Kingston upon Thames	15	20	13	14	17	8	11	10	6
Merton	15	21	21	10	10	13	27	18	15
Redbridge	33	51	56	39	28	26	29	28	15
Richmond upon Thames	25	13	14	24	7	8	13	7	11
Sutton	25	18	29	28	15	19	12	11	18
Waltham Forest	52	26	37	21	38	34	20	24	23

Table 2.9 Fires by hour of the day, since 2000

	<i>number</i>										<i>percentage</i>
	2000	2005	2010	2011	2012	2013	2014	2015	2016	2017	Average distribution
<b>Primary fire</b>	<b>22 334</b>	<b>16 167</b>	<b>13 522</b>	<b>12 911</b>	<b>11 678</b>	<b>11 289</b>	<b>10 675</b>	<b>10 820</b>	<b>10 587</b>	<b>10 756</b>	
0	1 087	745	536	509	431	385	370	387	359	394	3.5
1	946	690	501	466	400	355	343	321	333	355	3.2
2	857	632	413	425	326	297	271	264	295	291	2.6
3	662	483	372	333	286	254	253	263	255	241	2.3
4	499	396	311	318	269	203	206	194	221	204	1.9
5	377	329	234	228	204	210	187	168	185	185	1.7
6	360	258	249	216	208	217	165	198	196	191	1.8
7	349	322	289	259	260	230	216	238	230	202	2.1
8	533	411	382	353	336	352	258	305	267	295	2.7
9	565	466	430	398	371	390	391	399	383	368	3.6
10	682	503	475	437	459	413	425	395	402	393	3.7
11	791	588	556	502	525	474	437	475	449	479	4.3
12	870	693	606	613	575	539	503	517	509	526	4.8
13	924	692	695	648	627	562	564	579	563	577	5.3
14	988	769	641	652	619	635	542	528	539	546	5.2
15	1 038	758	698	696	605	609	576	605	585	578	5.5
16	1 119	810	728	676	689	623	621	648	584	579	5.6
17	1 526	921	893	786	703	728	718	682	634	677	6.4
18	1 436	932	795	791	727	719	732	727	729	698	6.7
19	1 425	1 035	816	853	776	777	747	747	750	764	7.0
20	1 431	991	786	789	652	647	617	675	651	620	5.9
21	1 457	1 003	746	709	620	641	581	580	568	576	5.4
22	1 273	878	694	666	555	556	525	492	490	543	4.8
23	1 139	862	676	588	455	473	427	433	410	474	4.1
<b>Secondary fire</b>	<b>26 135</b>	<b>24 218</b>	<b>13 895</b>	<b>13 880</b>	<b>9 697</b>	<b>9 791</b>	<b>8 898</b>	<b>10 055</b>	<b>9 764</b>	<b>9 082</b>	
0	1 057	943	563	590	371	364	333	347	332	292	3.5
1	724	703	401	445	288	282	292	282	239	223	2.8
2	593	534	327	359	235	203	270	237	205	186	2.3
3	486	457	258	258	193	176	175	168	156	137	1.7
4	333	333	193	223	135	136	155	140	152	101	1.4
5	253	261	135	183	126	114	145	114	116	102	1.2
6	218	225	127	138	97	99	89	108	125	106	1.1
7	241	244	174	170	101	101	109	131	146	146	1.3
8	311	320	225	227	147	177	134	166	199	203	1.8
9	281	293	255	267	170	211	193	218	211	222	2.2
10	384	392	271	289	218	216	175	232	241	245	2.3
11	555	590	341	331	283	302	275	339	320	316	3.3
12	765	692	483	466	352	396	366	376	393	396	4.0
13	1 070	983	565	563	433	462	406	521	457	404	4.7
14	1 200	1 125	659	642	461	548	410	488	472	510	5.1
15	1 555	1 454	839	788	572	621	526	597	593	557	6.1
16	1 871	1 609	983	948	694	706	562	681	717	614	6.9
17	2 278	2 167	1 191	1 057	684	759	614	767	773	701	7.6
18	2 337	2 188	1 180	1 122	866	770	775	837	807	777	8.3
19	2 425	2 268	1 167	1 230	861	830	793	827	807	767	8.5
20	2 414	2 071	1 139	1 103	781	711	718	788	726	653	7.6
21	2 082	1 858	1 007	982	695	633	582	692	660	546	6.5
22	1 488	1 459	790	835	489	529	412	573	533	494	5.3
23	1 214	1 049	622	664	445	445	389	426	384	384	4.3

Note: Average distribution is for the five years to 2017

**Table 2.10** Fires by month of the year, since 2000

	<i>number</i>										<i>percentage</i>
	2000	2005	2010	2011	2012	2013	2014	2015	2016	2017	Average distribution
<b>Primary fire</b>	<b>22 334</b>	<b>16 167</b>	<b>13 522</b>	<b>12 911</b>	<b>11 678</b>	<b>11 289</b>	<b>10 675</b>	<b>10 820</b>	<b>10 587</b>	<b>10 756</b>	
Jan	1 791	1 352	1 161	1 040	999	951	841	930	834	890	8.2
Feb	1 722	1 267	972	939	984	933	740	802	771	745	7.4
Mar	1 917	1 435	1 165	1 129	1 009	917	936	925	868	872	8.3
Apr	1 809	1 361	1 161	1 263	887	965	924	977	860	1 047	8.8
May	1 889	1 521	1 200	1 207	1 056	959	892	956	955	918	8.6
Jun	1 928	1 400	1 215	1 022	905	930	930	955	819	949	8.5
Jul	1 942	1 271	1 347	1 085	934	1 108	967	976	991	965	9.3
Aug	1 889	1 225	1 082	1 197	944	968	856	873	982	864	8.4
Sep	1 746	1 269	1 019	974	998	847	899	832	862	812	7.9
Oct	1 933	1 389	1 098	1 086	949	885	884	868	913	905	8.2
Nov	1 918	1 328	1 026	936	999	945	880	884	859	877	8.2
Dec	1 850	1 349	1 076	1 033	1 014	881	926	842	873	912	8.2
<b>Secondary fire</b>	<b>26 135</b>	<b>24 218</b>	<b>13 895</b>	<b>13 880</b>	<b>9 697</b>	<b>9 791</b>	<b>8 898</b>	<b>10 055</b>	<b>9 764</b>	<b>9 082</b>	
Jan	1 543	1 409	532	596	665	438	353	474	454	410	3.9
Feb	1 574	1 315	490	624	653	522	467	452	606	411	4.5
Mar	2 388	1 740	928	1 004	1 190	625	857	747	654	744	6.7
Apr	1 820	1 816	1 334	1 649	877	835	872	1 099	747	1 272	8.9
May	1 940	2 317	1 343	2 064	876	976	833	987	1 005	945	8.8
Jun	2 895	2 990	1 741	1 116	774	1 003	1 118	1 394	604	1 076	9.6
Jul	2 914	3 599	2 931	1 401	841	1 765	1 055	1 491	1 107	1 000	11.9
Aug	3 305	2 491	1 428	1 437	1 002	1 125	904	948	1 440	683	9.4
Sep	2 036	1 787	982	1 000	1 176	781	836	661	949	614	7.1
Oct	2 002	1 679	851	1 419	569	623	656	726	935	804	6.9
Nov	2 256	1 768	874	912	669	631	469	575	733	687	5.7
Dec	1 462	1 307	461	658	405	467	478	501	530	436	4.5

Note: Average distribution is for the five years to 2017

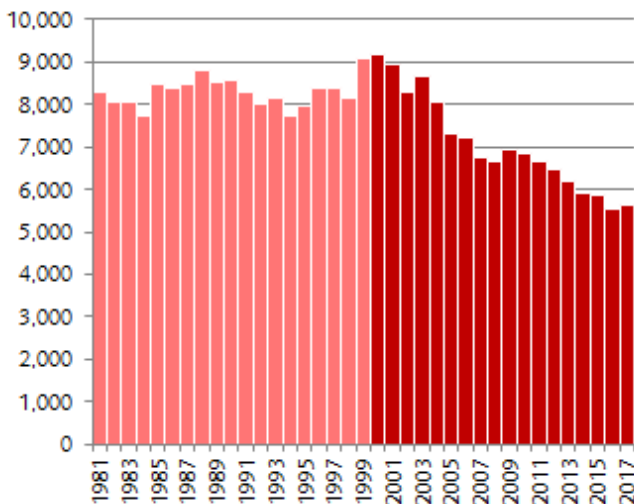
## Chapter 3 | Fires in the home

This chapter looks at fires in dwellings – people’s homes. In 2017, fires in dwellings accounted for around just over half (52 per cent) of fires in buildings attended.

### Trend in dwelling fires

Using official estimates for the number of fires in dwellings between 1981 and 1999<sup>2</sup>, we can see that the number of fires in dwellings in London were consistently around the average over this period of 8,200. Over this period there was very little change in the population of London, rising by just 350,000 people. [Chart 17]

**Chart 17: Fires in dwellings, 1981 to 2017**



Since 2000, the population of London has been increasing, yet the number of dwelling fires has reduced. This reduction is attributed to the success of community safety initiatives and an increase in smoke alarm ownership.

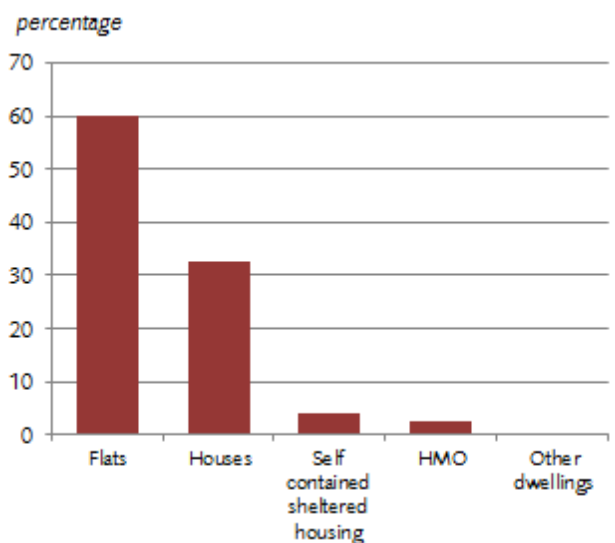
<sup>2</sup> Official estimates based on Home Office Fire Statistics, reconciled to Brigade totals 1981-1999.

### Where fires in the home happen

(Table 3.1 and 3.2)

The 2011 Census recorded that half of the population of London lived in flats. Dwelling fires by property type show that a slightly larger proportion of dwelling fires start in flats compared to the proportion of the population living in flats. [Chart 18]

**Chart 18: Fires by dwelling type, 2017**



Most of the fires in homes are accidental (92 per cent), with only a small proportion recorded as having a deliberate motive (seven per cent) in recent years.

### Room where the fires started

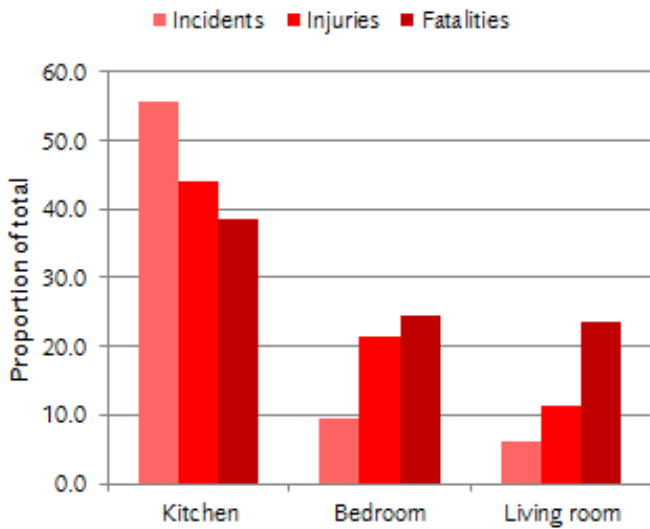
(Table 3.3)

Looking at the room where the fire started, most fires in recent years happen in the kitchen.

Whilst most fires start in a kitchen, these fires are less likely to be fatal. Most dwelling fire fatalities happen in a living room, followed by the bedroom. However, in many of these incidents, the living room was also being used as a bedroom.

Under half of the fire injuries are from fires that start in the kitchen; bedroom fires, and fires that start in a living room, account for the next highest proportions of injuries. [Chart 19]

**Chart 19: Where fires in the home start, showing proportion of incidents, injuries and fatalities, five years to 2017**



### How fires in the home start

(Table 3.4)

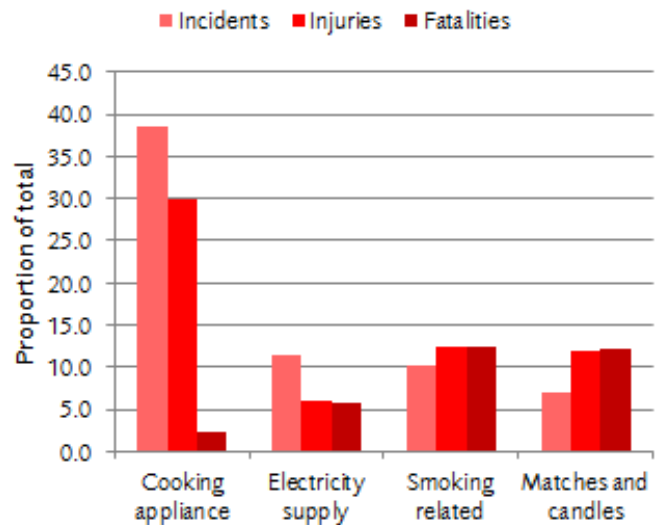
Given that over half of fires start in the kitchen, it is not surprising that a large proportion of fires in the kitchen are caused by cooking. Cooking appliances, however, are the cause of only a small proportion of dwelling fires fatalities.

Most dwelling fires fatalities are caused by fires started by smoking materials, which is the cause of only a small proportion of dwelling fires.

Fires started by matches and candles are also disproportionately fatal; a relatively small proportion of fires start in this way, yet, on average, they cause more dwelling fire fatalities. This is often caused by candles being left alight when people fall asleep.

[Chart 20]

**Chart 20: How fires in the home start, showing proportion of incidents, injuries and fatalities, five years to 2017**



The second most common cause of fires in the home are those caused by electrical supplies and wiring. However, only a very small proportion of dwelling fire deaths in recent years have been caused by fires starting this way.

### Firefighting actions

(Table 3.5)

Fires in the home are not inevitably serious and may not even involve the fire service. Of those to which we were called over the last five years, on about a third of

occasions the Brigade did not need to undertake any firefighting when it arrived, and on a further third of occasions, the Brigade undertook minimal firefighting; for example, taking actions such as taking items away from the heat source or stamping the fire out.

This means that the fire-engine's hose reels or main jets are used at only a third of fires in dwellings.

Where there are fatalities in dwelling fires, we use fire engine hose reels or main jets most of the time. We know from an analysis of our attendance times<sup>3</sup>, that there is often a delay in calling the fire brigade. On nearly half of occasions the delay between discovering the fire and calling 999 is more than 10 minutes.

### Working smoke alarms

The English Housing Survey – fire and fire safety 2016/17<sup>4</sup> reported that in England 90 per cent of households had at least one working smoke alarm in their home. This is an increase of six percentage points from 2008/09 (84 per cent).

In London, however, over last five years to 2017, when there has been a fire in a home in London, a smoke alarm was working and active in less than half of fires, with the alarm operating in a similar proportion of cases.

Year	Fires in dwellings		Dwelling fire fatalities	
	No alarm or not working	Alarm operated	No alarm or not working	Alarm Operated
2013	3,504	2,693	21	18
2014	3,162	2,731	12	14
2015	3,024	2,816	6	17
2016	2,840	2,718	22	16
2017	2,737	2,887	86	14
	<b>15,267</b>	<b>13,845</b>	<b>147</b>	<b>79</b>
	<b>52%</b>	<b>48%</b>	<b>65%</b>	<b>35%</b>

<sup>3</sup> LFB Fire Facts – Incident response times 2005-2015

<sup>4</sup> Published by the Ministry for Housing, Communities and Local Government (MHCLG)  
<https://www.gov.uk/government/statistics/english-housing-survey-2016-to-2017-fire-and-fire-safety>

**Table 3.1 Dwelling fires, by property category and type, since 2010**

*number*

	2010	2011	2012	2013	2014	2015	2016	2017
<b>Fires in dwellings</b>	<b>6 821</b>	<b>6 650</b>	<b>6 479</b>	<b>6 197</b>	<b>5 893</b>	<b>5 840</b>	<b>5 558</b>	<b>5 624</b>
<b>Flats</b>	<b>3 957</b>	<b>3 837</b>	<b>3 826</b>	<b>3 597</b>	<b>3 362</b>	<b>3 363</b>	<b>3 277</b>	<b>3 383</b>
Purpose Built Flats/Maisonettes - Up to 3 storeys	1 407	1 404	1 492	1 236	1 181	1 126	1 178	1 159
Purpose Built Flats/Maisonettes - 4 to 9 storeys	1 280	1 230	1 167	1 183	1 133	1 144	1 126	1 177
Converted Flat/Maisonette - Up to 2 storeys	450	435	434	469	395	418	370	370
Converted Flat/Maisonettes - 3 or more storeys	374	363	396	420	384	415	369	410
Purpose Built Flats/Maisonettes - 10 or more storeys	446	405	337	289	269	260	234	267
<b>Houses</b>	<b>2 341</b>	<b>2 283</b>	<b>2 120</b>	<b>2 099</b>	<b>1 975</b>	<b>1 977</b>	<b>1 911</b>	<b>1 840</b>
House - single occupancy	2 286	2 235	2 082	2 061	1 938	1 926	1 866	1 809
Bungalow - single occupancy	55	48	38	38	37	51	45	31
<b>Self contained Sheltered Housing</b>	<b>275</b>	<b>287</b>	<b>335</b>	<b>324</b>	<b>368</b>	<b>292</b>	<b>211</b>	<b>231</b>
<b>House in multiple occupation (HMO)</b>	<b>235</b>	<b>225</b>	<b>164</b>	<b>146</b>	<b>162</b>	<b>177</b>	<b>134</b>	<b>149</b>
House in Multiple Occupation - Up to 2 storeys (not known if licensed)	49	41	36	29	37	35	28	24
Unlicensed House in Multiple Occupation - Up to 2 storeys	56	47	23	27	33	36	26	31
Licensed House in Multiple Occupation - Up to 2 storeys	30	34	25	14	30	30	23	32
House in Multiple Occupation - 3 or more storeys (not known if licensed)	33	33	32	21	27	24	19	17
Licensed House in Multiple Occupation - 3 or more storeys	44	46	21	33	25	33	24	31
Unlicensed House in Multiple Occupation - 3 or more storeys	23	24	27	22	10	19	14	14
<b>Other dwellings</b>	<b>13</b>	<b>18</b>	<b>34</b>	<b>31</b>	<b>26</b>	<b>31</b>	<b>25</b>	<b>21</b>
Other Dwelling	4	11	23	22	18	20	20	15
Caravan/Mobile home (permanent dwelling)	9	5	6	7	5	6	3	5
Houseboat (permanent dwelling)	–	2	5	2	3	5	2	1

Note: 2011 census, London; 50.3% live in flats

**Table 3.2 Dwelling fires, by motive, since 2000**

*number*

	2000	2005	2010	2011	2012	2013	2014	2015	2016	2017
<b>Fires in dwellings</b>	<b>9 178</b>	<b>7 311</b>	<b>6 821</b>	<b>6 650</b>	<b>6 479</b>	<b>6 197</b>	<b>5 893</b>	<b>5 840</b>	<b>5 558</b>	<b>5 624</b>
Accidental	7 037	5 973	5 978	5 864	5 898	5 691	5 429	5 359	5 108	5 145
Deliberate	1 651	1 163	712	730	553	460	429	429	390	405
Not Known	490	175	131	56	28	46	35	52	60	74

**Table 3.3 Dwelling fires and casualties, by location of fire start, since 2010**

*number*

	2010	2011	2012	2013	2014	2015	2016	2017
<b>Fires in dwellings</b>	<b>6 816</b>	<b>6 655</b>	<b>6 479</b>	<b>6 197</b>	<b>5 893</b>	<b>5 840</b>	<b>5 558</b>	<b>5 624</b>
Kitchen	3 566	3 537	3 645	3 425	3 409	3 234	3 034	3 072
Bedroom	690	663	648	579	549	549	545	544
Living room	467	413	406	400	367	355	347	339
Corridor/Hall	319	332	307	267	247	251	246	243
Other	234	335	268	288	199	219	221	247
Bathroom/Toilet	187	154	178	170	138	155	144	150
Under stairs (enclosed, storage area)	167	155	140	145	135	128	105	105
Refuse store/Bin room	208	229	159	158	135	122	125	99
External structures	228	206	145	135	93	108	88	104
Utility room	83	71	–	–	35	95	104	93
Roof	81	71	87	85	84	76	68	58
Stairs	87	54	80	56	62	70	46	61
Airing/Drying cupboard	76	65	73	70	77	68	59	59
External fittings	77	72	56	80	47	59	40	52
Roof space	75	46	38	48	38	57	51	53
Bedsitting room	65	71	69	71	52	53	45	33
Private balcony	–	–	50	55	62	51	92	118
Garage	48	37	–	–	14	42	33	36
Conservatory	17	18	30	39	21	35	21	16
Open plan area	24	25	21	33	33	27	27	25
Dining room	36	38	22	20	24	24	24	27
Lift/Lift shaft/Motor room	21	27	18	19	16	18	20	22
Not known	32	23	19	14	25	18	4	7
Communal balcony/Elevated walkway			6	22	14	11	37	35
Chimney	25	12	9	16	10	9	28	18
Green or living roof	–	–	–	–	6	4	3	6
Sauna	2	1	4	1	1	2	1	1
Indoor swimming pool	1	–	–	1	–	–	–	1

**Table 3.3 (continued) Dwelling fires and casualties, by location of fire start, since 2010**

*number*

	2010	2011	2012	2013	2014	2015	2016	2017
<b>No. of fire related fatalities</b>	<b>50</b>	<b>46</b>	<b>38</b>	<b>39</b>	<b>26</b>	<b>23</b>	<b>38</b>	<b>100</b>
Living room	16	14	15	15	7	8	13	10
Bedroom	14	8	12	14	11	5	13	12
Kitchen	6	2	4	3	3	1	6	74
Corridor/Hall	2	7	–	2	–	1	2	–
Bedsitting room	8	2	–	1	1	3	1	–
Other	–	5	3	2	2	–	1	1
Not known	1	4	–	–	–	1	1	1
Conservatory	–	–	–	–	1	–	1	1
Bathroom/Toilet	3	1	2	–	–	4	–	–
Roof space	–	–	–	1	–	–	–	–
Garage	–	1	1	–	–	–	–	–
Under stairs (enclosed, storage area)	–	2	1	1	1	–	–	–
Airing/Drying cupboard	–	–	–	–	–	–	–	1
<b>No. of fire injuries</b>	<b>1 079</b>	<b>1 050</b>	<b>961</b>	<b>864</b>	<b>800</b>	<b>827</b>	<b>731</b>	<b>806</b>
Kitchen	459	426	450	375	352	360	332	356
Bedroom	211	247	211	201	162	165	141	197
Living room	104	103	100	81	117	82	85	89
Corridor/Hall	78	90	41	31	47	57	43	29
Other	24	49	39	36	23	35	32	39
Bedsitting room	19	21	12	33	13	33	10	12
Bathroom/Toilet	23	13	16	22	12	23	16	14
<i>Other locations (less than 2% over five years)</i>	<i>161</i>	<i>101</i>	<i>92</i>	<i>85</i>	<i>74</i>	<i>72</i>	<i>72</i>	<i>70</i>

**Table 3.4 Dwelling fires and casualties, by source of ignition, since 2010***number*

	2010	2011	2012	2013	2014	2015	2016	2017
<b>Fires in dwellings</b>	<b>6 816</b>	<b>6 655</b>	<b>6 479</b>	<b>6 197</b>	<b>5 893</b>	<b>5 840</b>	<b>5 558</b>	<b>5 624</b>
Cooking appliance	2 344	2 367	2 448	2 345	2 381	2 303	2 051	2 132
Electricity supply	737	709	723	778	664	646	634	626
Smoking related	644	682	620	609	522	632	589	610
Kitchen appliances	489	513	521	479	469	404	419	403
Matches and candles	486	443	471	400	413	406	397	389
White goods	315	304	334	311	308	260	246	271
Other ignition source	215	235	246	260	223	224	285	240
Naked flame	601	593	347	275	258	252	235	209
Heating equipment	276	219	248	208	184	172	186	170
Electric lighting	193	167	172	185	158	174	155	149
Other item	219	170	165	142	141	122	142	143
Not confirmed	149	113	55	66	61	135	122	179
Domestic appliances	61	61	63	55	59	47	50	45
Audio-Visual	42	47	32	34	30	31	28	37
DIY	43	30	33	48	21	32	18	20
Vehicle	2	2	1	2	1		1	1

**Table 3.4 (continued) Dwelling fires and casualties, by source of ignition, since 2010**

<i>number</i>	2010	2011	2012	2013	2014	2015	2016	2017
<b>No. of fire related fatalities</b>	<b>50</b>	<b>46</b>	<b>38</b>	<b>39</b>	<b>26</b>	<b>23</b>	<b>38</b>	<b>100</b>
White goods	2	6	–	–	1	–	–	73
Smoking related	17	7	14	20	9	11	19	13
Matches and Candles	9	6	5	5	5	6	6	3
Naked flame	4	9	2	3	2	2	4	3
Other ignition source	6	4	2	4	2	–	2	2
Not confirmed	2	4	4	3	2	2	1	1
Heating appliances	5	3	4	2	1	1	1	3
Cooker	4	2	3	1	1	–	2	1
Kitchen appliances	–	–	–	–	1	–	1	–
Lighting	–	1	2	–	–	1	1	–
Electrical distribution	1	–	2	–	2	–	–	–
Other item	–	1	–	–	–	–	1	–
Audio-Visual	–	2	–	1	–	–	–	–
DIY	–	1	–	–	–	–	–	1
<b>No. of fire injuries</b>	<b>1 079</b>	<b>1 050</b>	<b>961</b>	<b>864</b>	<b>800</b>	<b>827</b>	<b>731</b>	<b>806</b>
Cooker	300	308	313	255	254	266	224	210
Smoking related	145	123	129	104	98	87	98	107
Matches and Candles	125	128	106	106	99	98	81	107
Naked flame	144	166	91	89	61	74	67	56
White goods	62	47	59	43	47	23	36	93
Electrical distribution	58	64	43	62	69	42	43	15
Other ignition source	29	22	48	36	35	53	57	38
Heating appliances	62	48	36	43	32	45	39	43
Kitchen appliances	60	38	48	56	34	42	25	33
Not confirmed	8	34	14	11	13	44	21	58
Lighting	22	19	34	34	11	13	15	14
Other item	32	24	23	10	21	13	16	10
Domestic appliances	10	10	8	5	15	23	9	15
Audio-Visual	9	11	6	7	8	3	–	5
DIY	13	8	3	3	3	1	–	2

**Table 3.5 Dwelling fires, by firefighting actions, since 2010**

*number*

	2010	2011	2012	2013	2014	2015	2016	2017
<b>Fires in dwellings</b>	<b>6 816</b>	<b>6 655</b>	<b>6 479</b>	<b>6 197</b>	<b>5 893</b>	<b>5 840</b>	<b>5 558</b>	<b>5 624</b>
None	1 844	1 858	1 996	1 907	1 897	1 805	1 746	1 812
Small means	2 121	2 161	2 255	2 055	2 006	1 977	1 787	1 890
Portable extinguishers	399	339	196	260	270	222	236	217
Non-portable / fixed sources	7	5	3	6	4	4	3	6
Main jets or hose reel	2 376	2 250	1 974	1 915	1 679	1 790	1 736	1 667
Other means	69	42	55	54	37	42	50	32
<b>No. of fire related fatalities</b>	<b>50</b>	<b>46</b>	<b>37</b>	<b>39</b>	<b>26</b>	<b>23</b>	<b>38</b>	<b>100</b>
None	6	2	3	2	5	–	6	3
Small means	3	–	1	–	–	–	–	1
Portable extinguishers	–	1	1	–	–	–	–	–
Non-portable / fixed sources	–	–	–	–	–	–	–	–
Main jets or hose reel	41	43	33	37	21	23	32	96
Other means	–	–	–	–	–	–	–	–
<b>No. of fire injuries</b>	<b>1 079</b>	<b>1 050</b>	<b>959</b>	<b>865</b>	<b>802</b>	<b>827</b>	<b>731</b>	<b>806</b>
None	185	208	233	187	204	215	183	176
Small means	179	133	152	126	97	109	84	100
Portable extinguishers	38	39	25	21	39	23	16	15
Non-portable / fixed sources	–	1	1	1	1	–	–	–
Main jets or hose reel	675	667	543	527	457	479	448	514
Other means	2	2	7	2	2	1	–	1

**Table 3.6 Dwelling fires, by London borough, since 2000**

<i>number</i>										
	2000	2005	2010	2011	2012	2013	2014	2015	2016	2017
<b>Dwelling fires</b>	<b>9 178</b>	<b>7 311</b>	<b>6 821</b>	<b>6 650</b>	<b>6 479</b>	<b>6 197</b>	<b>5 893</b>	<b>5 840</b>	<b>5 558</b>	<b>5 624</b>
<b>Inner London</b>	<b>4 844</b>	<b>3 759</b>	<b>3 449</b>	<b>3 281</b>	<b>3 205</b>	<b>3 029</b>	<b>2 877</b>	<b>2 828</b>	<b>2 657</b>	<b>2 705</b>
Camden	364	251	232	203	215	198	194	202	187	194
City of London	11	4	10	3	6	7	10	10	3	5
Hackney	458	376	282	301	282	276	281	259	239	224
Hammersmith and Fulham	260	217	185	206	157	166	132	136	157	132
Haringey	334	291	242	219	200	195	194	212	216	176
Islington	350	249	209	241	198	183	166	173	158	200
Kensington and Chelsea	231	190	159	153	161	135	156	126	124	151
Lambeth	531	404	345	333	362	309	306	281	261	245
Lewisham	344	294	304	230	263	265	229	259	236	230
Newham	431	293	262	269	248	249	226	201	198	234
Southwark	476	344	356	313	340	306	308	286	263	289
Tower Hamlets	354	298	347	300	260	248	228	236	204	220
Wandsworth	304	253	248	261	254	254	235	238	212	214
Westminster	396	295	268	249	259	238	212	209	199	191
<b>Outer London</b>	<b>4 332</b>	<b>3 552</b>	<b>3 372</b>	<b>3 369</b>	<b>3 274</b>	<b>3 168</b>	<b>3 016</b>	<b>3 012</b>	<b>2 901</b>	<b>2 919</b>
Barking and Dagenham	209	212	162	157	146	158	135	139	160	130
Barnet	291	251	263	227	244	238	210	230	210	233
Bexley	153	131	129	143	144	118	122	131	118	116
Brent	394	284	243	240	245	234	220	238	222	237
Bromley	200	165	178	167	160	155	136	143	176	156
Croydon	354	259	266	301	290	251	259	264	267	268
Ealing	340	282	250	239	200	216	216	202	196	221
Enfield	240	231	214	238	234	235	219	193	181	200
Greenwich	349	249	248	222	207	211	196	187	185	199
Harrow	172	159	124	141	126	144	130	113	102	128
Havering	145	106	108	109	111	108	109	118	122	94
Hillingdon	191	153	145	176	179	161	144	151	161	151
Hounslow	217	200	156	168	168	166	152	168	138	168
Kingston upon Thames	123	92	106	96	93	98	81	80	96	62
Merton	185	122	147	134	113	106	109	126	111	91
Redbridge	192	174	197	169	169	152	171	154	132	151
Richmond upon Thames	135	106	98	92	100	100	114	100	97	87
Sutton	168	145	154	137	144	141	134	106	102	85
Waltham Forest	274	231	184	213	201	176	159	169	125	142

**Table 3.7 Dwelling fire related fatalities, by London borough, since 2000**

*number*

	2000	2005	2010	2011	2012	2013	2014	2015	2016	2017
<b>Dwelling fire fatalities</b>	<b>51</b>	<b>53</b>	<b>50</b>	<b>46</b>	<b>38</b>	<b>39</b>	<b>26</b>	<b>23</b>	<b>38</b>	<b>100</b>
<b>Inner London</b>	<b>21</b>	<b>23</b>	<b>22</b>	<b>18</b>	<b>17</b>	<b>24</b>	<b>10</b>	<b>12</b>	<b>20</b>	<b>85</b>
Camden	2	2	2	–	2	2	–	1	2	3
City of London	–	–	–	–	–	1	–	–	–	–
Hackney	5	4	2	1	2	1	2	1	1	1
Hammersmith and Fulham	1	–	2	2	2	4	–	2	1	–
Haringey	–	2	2	2	–	2	1	–	2	2
Islington	1	2	3	–	2	1	–	–	3	–
Kensington and Chelsea	2	–	–	–	1	–	–	–	1	72
Lambeth	1	4	1	1	2	1	–	2	1	3
Lewisham	–	3	3	2	1	1	4	–	1	–
Newham	3	1	1	2	–	3	1	3	1	1
Southwark	1	1	2	4	2	2	–	1	3	–
Tower Hamlets	3	–	1	2	1	1	1	1	–	1
Wandsworth	2	2	2	1	–	3	–	1	3	1
Westminster	–	2	1	1	2	2	1	–	1	1
<b>Outer London</b>	<b>30</b>	<b>30</b>	<b>28</b>	<b>28</b>	<b>21</b>	<b>15</b>	<b>16</b>	<b>11</b>	<b>18</b>	<b>15</b>
Barking and Dagenham	–	1	1	–	1	–	1	–	1	2
Barnet	2	1	2	1	1	–	–	–	–	–
Bexley	3	–	1	–	–	–	–	1	–	–
Brent	–	1	1	8	3	1	–	1	1	–
Bromley	5	–	4	2	3	–	1	–	2	1
Croydon	1	2	3	1	2	–	3	2	1	–
Ealing	1	2	4	2	2	–	1	3	2	1
Enfield	2	1	1	–	1	3	1	–	1	3
Greenwich	2	–	2	2	1	2	2	–	2	1
Harrow	3	1	2	–	–	–	2	–	–	–
Havering	–	–	–	1	2	1	–	–	1	4
Hillingdon	–	10	–	1	1	2	–	–	–	1
Hounslow	–	2	1	1	1	3	1	2	1	–
Kingston upon Thames	2	1	–	2	–	–	1	–	1	–
Merton	–	–	1	–	–	–	–	–	1	–
Redbridge	3	–	2	2	–	–	1	1	1	–
Richmond upon Thames	1	1	–	–	2	–	–	–	1	–
Sutton	2	2	1	–	–	2	–	1	1	1
Waltham Forest	3	5	2	5	1	1	2	–	1	1

**Table 3.8 Dwelling fire injuries, by London borough, since 2005**

	<i>number</i>									
	2005	2010	2011	2012	2013	2014	2015	2016	2017	
<b>Dwelling fire injuries</b>	<b>1 120</b>	<b>1 081</b>	<b>1 048</b>	<b>961</b>	<b>864</b>	<b>800</b>	<b>827</b>	<b>731</b>	<b>806</b>	
<b>Inner London</b>	<b>516</b>	<b>557</b>	<b>473</b>	<b>444</b>	<b>401</b>	<b>412</b>	<b>382</b>	<b>323</b>	<b>417</b>	
Camden	26	26	38	26	37	21	20	15	16	
City of London	1	1	–	1	–	3	1	–	–	
Hackney	50	54	40	50	23	25	30	29	26	
Hammersmith and Fulham	36	24	11	21	17	24	12	22	17	
Haringey	44	40	54	45	22	46	33	13	34	
Islington	27	35	29	12	21	22	14	24	22	
Kensington and Chelsea	28	38	14	30	8	11	41	23	104	
Lambeth	46	39	42	46	43	43	39	34	25	
Lewisham	58	72	38	58	62	34	35	35	31	
Newham	60	57	50	32	29	34	22	36	43	
Southwark	25	38	55	32	49	41	47	40	28	
Tower Hamlets	51	49	17	39	34	28	32	13	24	
Wandsworth	25	48	44	30	31	45	36	27	27	
Westminster	39	36	41	22	25	35	20	12	20	
<b>Outer London</b>	<b>604</b>	<b>524</b>	<b>575</b>	<b>517</b>	<b>463</b>	<b>388</b>	<b>445</b>	<b>408</b>	<b>389</b>	
Barking and Dagenham	35	35	21	36	30	22	18	26	24	
Barnet	33	32	35	26	30	18	27	26	27	
Bexley	25	19	27	18	9	8	18	23	20	
Brent	43	44	47	34	33	39	48	33	25	
Bromley	25	19	33	26	19	15	19	16	15	
Croydon	49	48	54	67	47	46	46	28	31	
Ealing	67	31	34	31	30	42	30	32	25	
Enfield	41	34	38	32	40	36	46	39	47	
Greenwich	27	26	34	40	38	16	29	19	25	
Harrow	32	37	28	13	18	7	7	20	13	
Havering	13	16	14	23	15	23	15	13	21	
Hillingdon	32	19	34	27	18	18	22	33	18	
Hounslow	31	37	38	33	31	15	28	15	24	
Kingston upon Thames	15	12	12	13	16	8	9	8	4	
Merton	14	20	17	7	10	9	22	18	13	
Redbridge	30	47	42	30	25	21	23	26	12	
Richmond upon Thames	23	11	11	20	7	8	10	5	9	
Sutton	23	17	24	24	14	18	10	10	15	
Waltham Forest	46	20	32	17	33	19	18	18	21	

## Chapter 4 | Fires in other buildings

This chapter looks at fires in other buildings – buildings which are not dwellings and which are either:

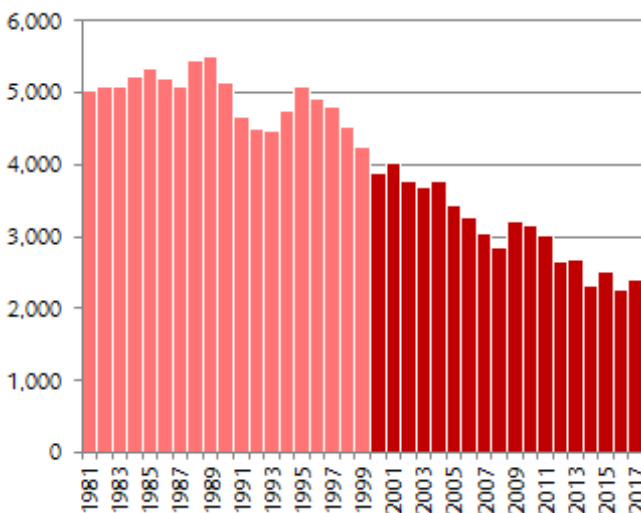
- 'other residential' – places such as care homes and student halls; or
- 'non-residential' – primarily commercial and public buildings, but also includes private outbuildings (like sheds).

In recent years, primary fires in other buildings have accounted for 12 percent of all the fires, and 29 percent of all primary fires.

### Trend in other building fires

Based on official estimates<sup>5</sup>, the number of fires in other buildings were at their highest in 1989 when there were 5,495 fires that year. When compared to recent years, fires in other buildings have reduced by over a third (38 percent) since 2000. [Chart 21]

**Chart 21: Fires in other buildings, 1981 to 2017**



<sup>5</sup> Official estimates based on Home Office fire statistics, reconciled to Brigade totals 1981-1999.

### Other residential building fires

(Table 4.1)

Nearly half of the fires in other residential buildings happened in accommodation providing care for elderly people. There are very few fire deaths in other residential buildings.

Of the fire injuries that occur in other residential buildings, about two-thirds are in places providing care to the elderly. These facts are of serious concern to the Brigade and we adopted a specific strategy as part of our Fifth London Safety Plan, 2013-2017(which continues in our current Plan) to try and make a change to this situation.

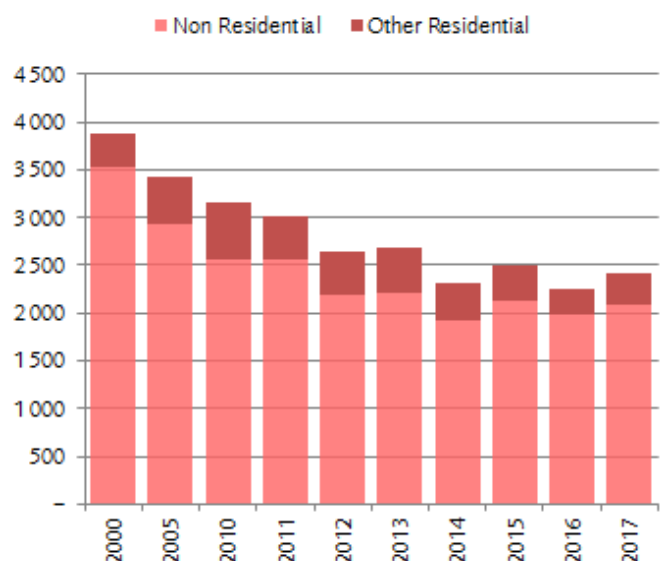
(Table 4.4)

Just under half of the fires in other residential buildings were started by cooking; smaller proportions were started by smoking, and by electrical supplies and wiring.

### Non-residential building fires

A very high proportion of the primary fires in other buildings in recent years happened in non-residential buildings. [Chart 22]

**Chart 22: Fires in other buildings, proportion of residential and non-residential buildings, since 2010**



(Table 4.2)

About a fifth of the non-residential building fires in recent years started in out-buildings such as private garages and sheds.

Around one third of the fires happen in commercial retail buildings and places providing food or drink.

However, over a third of the fire injuries happened in places providing food or drink, with retail buildings and private sheds/garages accounting for around 15 per cent each.

**Table 4.1 Fires in other residential buildings, since 2010**

<i>number</i>	2010	2011	2012	2013	2014	2015	2016	2017
<b>Fires in other residential buildings</b>	<b>591</b>	<b>446</b>	<b>472</b>	<b>480</b>	<b>386</b>	<b>377</b>	<b>286</b>	<b>329</b>
Retirement/Old Persons Home	96	79	120	145	111	88	84	82
Nursing/Care Home/Hospice	99	80	85	80	58	67	39	60
Hostel (e.g. for homeless people)	96	68	64	68	66	69	41	54
Hotel/motel	79	58	60	65	54	55	52	53
Student Hall of Residence	85	75	46	60	50	39	32	31
Other Residential Home	31	13	18	15	9	23	14	19
Boarding House/B&B for homeless/asylum seekers	9	11	11	8	9	8	9	7
Youth hostel	9	6	10	6	4	6	3	6
Children's Home	9	4	8	2	1	4	2	6
Towing caravan/Camper van on site	3		1	3	1	–	1	5
Military/barracks	1	3		1	3	–	–	3
Nurses'/Doctors' accommodation	19	7	8	12	9	15	5	2
Boarding House/B&B other	4	2	2	1	3	1	3	1
Sheltered Housing : not self contained	50	40	38	12	6	–	–	–
Boarding School accommodation	0	0	–	1	2	1	1	–
Other holiday residence (cottage, flat, chalet)	0	0	–	1	–	1	–	–
Monastery/convent	1	0	1	–	–	–	–	–
<b>No. of fire related fatalities</b>	<b>3</b>	<b>1</b>	<b>1</b>	<b>1</b>	<b>–</b>	<b>2</b>	<b>1</b>	<b>1</b>
Other Residential Home	–	–	–	–	–	–	–	1
Nursing/Care Home/Hospice	3	1	–	–	–	1	1	–
Retirement/Old Persons Home	–	–	1	–	–	–	–	–
Hotel/motel	–	–	–	1	–	1	–	–
<b>No. of fire injuries</b>	<b>33</b>	<b>51</b>	<b>35</b>	<b>34</b>	<b>19</b>	<b>30</b>	<b>25</b>	<b>32</b>
Nursing/Care Home/Hospice	8	7	6	5	3	4	1	11
Retirement/Old Persons Home	5	11	12	13	7	9	12	10
Hostel (e.g. for homeless people)	6	13	1	6	–	7	1	6
Hotel/motel	3	3	8	7	3	1	7	2
Student Hall of Residence	3	3	2	–	3	–	3	1
Other Residential Home	2	4	2	1	1	5	–	1
Childrens Home	–	–	–	–	–	–	–	1
Sheltered Housing : not self contained	3	8	3	1	–	–	–	–
Boarding House/B&B for homeless/asylum seekers	3	2	1	–	–	2	–	–
Boarding House/B&B other	–	–	–	–	–	1	1	–
Nurses'/Doctors' accommodation	–	–	–	1	1	1	–	–
Youth hostel	–	–	–	–	1	–	–	–

**Table 4.2 Fires in non-residential buildings, since 2010**

<i>number</i>	2010	2011	2012	2013	2014	2015	2016	2017
<b>Fires in non-residential buildings</b>	<b>2 566</b>	<b>2 565</b>	<b>2 180</b>	<b>2 213</b>	<b>1 925</b>	<b>2 126</b>	<b>1 974</b>	<b>2 083</b>
Out buildings	544	575	444	455	387	462	425	433
Retail	485	490	455	430	333	375	342	400
Food and Drink	376	354	328	336	322	349	342	367
Offices and call centres	212	259	208	221	172	172	171	176
Education	146	145	122	140	110	113	92	123
Public admin, security and safety	109	102	86	98	116	134	127	109
Transport buildings	82	73	74	52	51	63	81	102
Hospitals and medical care	192	157	139	152	129	122	107	96
Entertainment and culture	107	97	74	55	49	68	68	61
Industrial Manufacturing	53	69	52	56	67	53	50	<b>48</b>
Sporting venues	49	43	33	37	40	41	46	<b>38</b>
Public Utilities	48	42	35	36	26	27	25	<b>37</b>
Industrial Processing	30	34	26	38	34	38	25	<b>28</b>
Warehouses and bulk storage	63	66	46	47	41	51	34	<b>27</b>
Religious	30	28	34	30	22	29	13	20
Car Parks	28	18	13	23	20	22	22	14
Animal boarding/breeding/kennels	3	7	3	2	2	3	2	3
Permanent Agricultural	9	6	8	5	4	4	2	1
<b>No. of fire related fatalities</b>	<b>4</b>	<b>-</b>	<b>-</b>	<b>5</b>	<b>1</b>	<b>2</b>	<b>4</b>	<b>-</b>
Club/night club	-	-	-	-	-	-	1	-
Community centre/Hall	-	-	-	1	-	-	-	-
Mosque	-	-	-	-	-	1	-	-
Other building/use not known	-	-	-	-	-	-	1	-
Other private non-residential building	-	-	-	1	-	-	-	-
Private garage	4	-	-	-	-	-	2	-
Private Garden Shed	-	-	-	2	-	1	-	-
Sports pavilion/shower block/changing facility	-	-	-	-	1	-	-	-
TV/film/music/art studio	1	-	-	-	-	-	-	-
Vehicle Repair Workshop	-	-	-	1	-	-	-	-
<b>No. of fire injuries</b>	<b>86</b>	<b>79</b>	<b>103</b>	<b>114</b>	<b>116</b>	<b>81</b>	<b>94</b>	<b>111</b>
Food and Drink	22	16	28	30	42	42	42	38
Retail	14	14	21	21	12	12	12	25
Public admin, security and safety	13	5	12	9	11	11	11	10
Private garages/sheds	15	20	18	20	14	14	14	9
Offices and call centres	6	1	3	8	9	9	9	5
Industrial Processing	-	3	2	5	3	3	3	5
Hospitals and medical care	3	5	2	11	9	9	9	4
Transport buildings	1	1	-	-	3	3	3	4
Other	-	-	-	-	-	-	-	4
Industrial Manufacturing	1	6	-	2	6	6	6	2
Education	2	2	2	1	2	2	2	2
Warehouses and bulk storage	3	-	1	2	2	2	2	1
Religious	-	-	3	2	2	2	2	1
Sporting venues	2	2	5	-	-	-	-	1
Car Parks	-	1	-	-	1	1	1	-
Entertainment and culture	3	-	6	3	-	-	-	-
Public Utilities	1	2	-	-	-	-	-	-
Permanent Agricultural	-	1	-	-	-	-	-	-

**Table 4.3 Fires in other buildings, by source of ignition, since 2010**

*number*

	2010	2011	2012	2013	2014	2015	2016	2017
<b>Fires in other buildings</b>	<b>3 157</b>	<b>3 011</b>	<b>2 652</b>	<b>2 693</b>	<b>2 311</b>	<b>2 503</b>	<b>2 260</b>	<b>2 412</b>
<b>Fires in other residential buildings</b>	<b>591</b>	<b>446</b>	<b>472</b>	<b>480</b>	<b>386</b>	<b>377</b>	<b>286</b>	<b>329</b>
Cooking appliance	300	224	248	263	204	186	149	142
Smoking related	72	65	61	66	46	61	43	42
Electricity supply	40	30	30	32	31	31	25	36
Matches and candles	22	21	15	21	18	27	15	28
Other domestic style appliance	31	23	23	18	23	9	14	23
Other sources	27	12	18	10	16	13	13	16
Naked flame	41	32	28	21	12	17	11	16
Electric lighting	19	16	20	23	18	15	6	11
Heating equipment	20	10	11	13	10	8	7	8
Industrial equipment	11	12	12	9	6	4	3	4
Fuel/Chemical	7	1	5	4	1	5	–	2
Office equipment	–	–	1	–	1	1	–	1
Vehicles only	1	–	–	–	–	–	–	–
<b>Fires in non-residential buildings</b>	<b>2 566</b>	<b>2 565</b>	<b>2 180</b>	<b>2 213</b>	<b>1 924</b>	<b>2 126</b>	<b>1 974</b>	<b>2 083</b>
Electricity supply	514	472	443	485	392	404	428	424
Smoking related	305	341	292	284	277	373	302	345
Other sources	293	296	253	255	267	278	244	291
Cooking appliance	296	280	282	285	244	243	247	269
Naked flame	350	386	240	191	143	177	170	144
Electric lighting	191	175	184	172	138	160	126	136
Industrial equipment	146	144	120	154	130	119	113	120
Matches and candles	158	166	129	123	124	152	139	113
Heating equipment	99	92	77	116	69	65	70	99
Other domestic style appliance	99	109	97	85	77	85	76	87
Fuel/Chemical	83	72	35	43	35	45	41	36
Office equipment	18	16	17	15	25	17	10	9
Vehicles only	12	10	10	5	2	7	7	8
Bombs and explosives	2	6	1	–	1	1	1	2

**Table 4.4 Fires in other residential buildings, by borough, since 2005**

<i>number</i>									
	2005	2010	2011	2012	2013	2014	2015	2016	2017
<b>Fires in other residential buildings</b>	<b>491</b>	<b>591</b>	<b>446</b>	<b>472</b>	<b>480</b>	<b>386</b>	<b>377</b>	<b>286</b>	<b>329</b>
<b>Inner London</b>	<b>305</b>	<b>328</b>	<b>250</b>	<b>258</b>	<b>274</b>	<b>220</b>	<b>195</b>	<b>147</b>	<b>176</b>
Camden	66	41	29	27	56	32	32	15	17
City of London	–	2	1	4	1		6	2	3
Hackney	14	11	16	14	11	13	15	6	16
Hammersmith and Fulham	16	21	9	7	7	7	7	9	10
Haringey	5	19	9	12	13	8	5	2	4
Islington	24	27	20	13	14	17	13	7	10
Kensington and Chelsea	11	17	15	20	17	15	13	8	11
Lambeth	33	24	33	38	24	25	25	16	15
Lewisham	11	16	22	18	12	20	11	11	14
Newham	11	17	12	8	17	8	6	7	9
Southwark	15	41	29	22	29	15	22	18	20
Tower Hamlets	25	19	10	18	15	12	6	11	15
Wandsworth	9	16	17	16	21	15	12	10	8
Westminster	65	57	28	41	37	33	22	25	24
<b>Outer London</b>	<b>186</b>	<b>263</b>	<b>196</b>	<b>214</b>	<b>206</b>	<b>166</b>	<b>182</b>	<b>139</b>	<b>153</b>
Barking and Dagenham	6	4	6	3	3	1	4	1	3
Barnet	23	18	9	19	14	9	11	6	8
Bexley	7	9	6	3	4	4	6	5	5
Brent	13	12	21	15	22	17	13	12	13
Bromley	8	15	7	20	15	12	9	5	6
Croydon	20	27	20	20	23	17	23	16	13
Ealing	16	23	16	12	13	13	16	14	14
Enfield	6	20	8	13	11	9	11	8	7
Greenwich	8	15	12	17	18	16	14	7	7
Harrow	8	10	8	9	8	8	2	6	6
Havering	6	12	11	8	7	7	7	5	8
Hillingdon	17	15	10	11	13	14	11	18	15
Hounslow	6	18	12	10	7	8	8	8	19
Kingston upon Thames	16	17	12	11	8	6	9	7	4
Merton	7	7	2	7	6	2	2	2	1
Redbridge	4	6	13	8	4	4	15	8	8
Richmond upon Thames	5	17	7	7	8	9	7	4	5
Sutton	2	14	5	8	9	2	5	4	6
Waltham Forest	8	4	11	13	13	8	9	3	5

**Table 4.5 Fires in non-residential buildings, by borough, since 2005**

<i>number</i>										
	2005	2010	2011	2012	2013	2014	2015	2016	2017	
<b>Fires in non-residential buildings</b>	<b>2 936</b>	<b>2 566</b>	<b>2 565</b>	<b>2 180</b>	<b>2 213</b>	<b>1 925</b>	<b>2 126</b>	<b>1 974</b>	<b>2 083</b>	
<b>Inner London</b>	<b>1 482</b>	<b>1 260</b>	<b>1 217</b>	<b>1 092</b>	<b>1 104</b>	<b>936</b>	<b>1 084</b>	<b>957</b>	<b>1 008</b>	
Camden	143	132	110	102	121	82	89	75	103	
City of London	47	46	71	49	57	46	49	45	44	
Hackney	86	68	81	60	76	52	69	61	62	
Hammersmith and Fulham	78	62	63	60	48	52	50	71	59	
Haringey	86	69	69	48	46	45	58	42	43	
Islington	100	66	79	72	57	71	91	60	57	
Kensington and Chelsea	56	56	46	45	45	31	45	52	46	
Lambeth	118	88	86	79	81	66	66	67	53	
Lewisham	70	68	72	51	52	48	53	41	36	
Newham	111	81	72	69	83	58	74	62	79	
Southwark	107	96	100	75	66	67	79	66	63	
Tower Hamlets	123	92	85	83	87	64	83	73	72	
Wandsworth	97	90	81	80	86	70	114	74	107	
Westminster	260	246	202	219	199	184	164	168	184	
<b>Outer London</b>	<b>1 454</b>	<b>1 306</b>	<b>1 348</b>	<b>1 088</b>	<b>1 109</b>	<b>989</b>	<b>1 042</b>	<b>1 017</b>	<b>1 074</b>	
Barking and Dagenham	104	55	68	54	42	41	58	43	46	
Barnet	71	61	82	70	50	51	56	57	67	
Bexley	60	64	74	42	47	47	66	43	60	
Brent	85	66	75	69	73	66	68	55	67	
Bromley	79	67	77	64	65	46	50	66	42	
Croydon	104	109	113	60	80	75	57	63	65	
Ealing	111	107	102	81	93	63	61	66	72	
Enfield	83	84	89	71	83	71	74	72	80	
Greenwich	96	60	83	77	61	68	71	63	63	
Harrow	38	50	47	38	40	35	38	29	36	
Havering	69	70	72	37	47	44	56	58	46	
Hillingdon	119	110	118	112	91	91	87	129	124	
Hounslow	108	106	75	74	78	66	68	66	60	
Kingston upon Thames	57	48	23	29	34	40	32	34	40	
Merton	42	47	37	47	50	36	35	35	35	
Redbridge	69	81	51	42	43	43	59	39	60	
Richmond upon Thames	34	33	50	29	43	22	36	28	30	
Sutton	49	37	58	44	51	34	28	28	40	
Waltham Forest	76	51	54	48	38	50	42	43	41	
<b>Not Geo-Coded</b>	<b>-</b>	<b>-</b>	<b>-</b>	<b>-</b>	<b>-</b>	<b>-</b>	<b>-</b>	<b>-</b>	<b>1</b>	

London Fire Brigade is run by  
London Fire and Emergency Planning Authority

[www.london-fire.gov.uk](http://www.london-fire.gov.uk)

