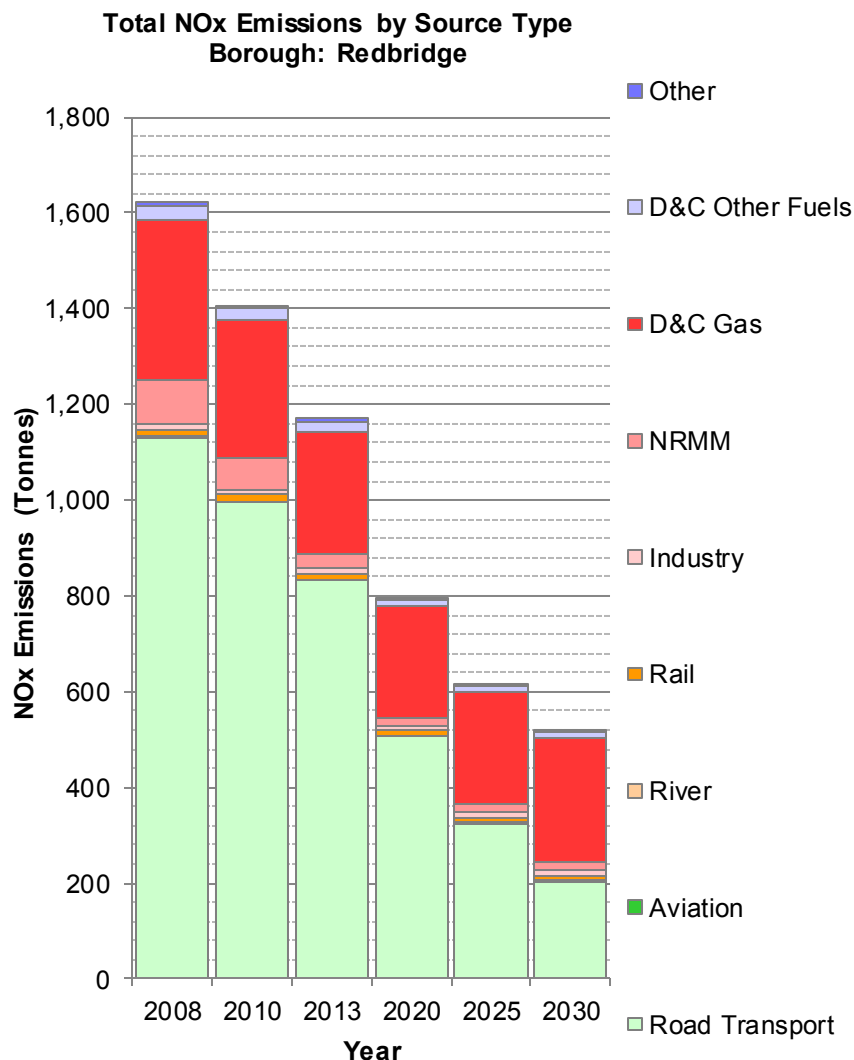


# London Atmospheric Emissions Inventory

## NOx Emissions - Redbridge



Emissions (Tonnes) by	2008	2010	2013	2020	2025	2030
Road Transport	1,130	995	832	505	324	203
Aviation	2	2	2	2	2	2
River	0	0	0	0	0	0
Rail	16	15	14	11	11	11
Industry	9	9	9	9	9	9
NRMM	93	69	32	18	18	18
D&C Gas	333	285	252	232	235	260
D&C Other Fuels	30	25	24	13	11	10
Other	7	6	5	4	3	5
<b>Total</b>	<b>1,621</b>	<b>1,406</b>	<b>1,170</b>	<b>796</b>	<b>614</b>	<b>518</b>

### Notes:

(D&C = Domestic and Commercial)

The summary graph represents emissions from each source stacked on top of one another, with the total stack height equalling the total emissions from all sources.

The numbers in the table are those used to plot the graph and represent the tonnes of pollution emitted into the atmosphere in that year (T/y).

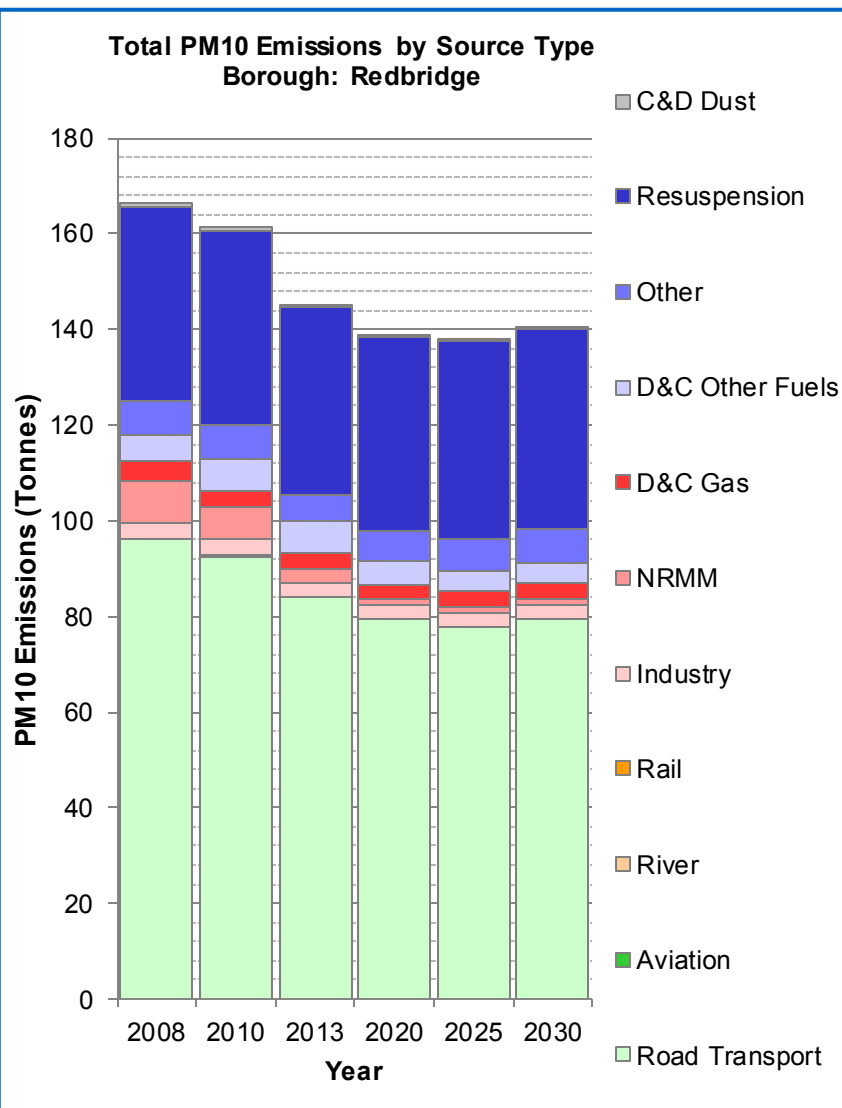
The emissions are combined into reasonably self explanatory "Source Types".

However, the categories: "Industry", "NRMM" and "Other" require further explanation:

- **Industry:** is the total emission from Part A and Part B industrial processes, combined.
- **Non-Road Mobile Machinery (NRMM):** is the total emissions from construction and industrial off road machines, combined.
- **Other:** is the total emission from a number of small sources including: agriculture, outdoor fires, garden emissions, forests, waste and waste transfer sites, combined.

# London Atmospheric Emissions Inventory

## PM10 Emissions - Redbridge



Emissions (Tonnes) by	2008	2010	2013	2020	2025	2030
Road Transport	96.0	92.6	84.0	79.3	77.8	79.3
Aviation	0.0	0.0	0.0	0.0	0.0	0.0
River	0.0	0.0	0.0	0.0	0.0	0.0
Rail	0.2	0.2	0.2	0.1	0.1	0.1
Industry	3.3	3.3	2.9	2.9	2.9	2.9
NRMM	8.9	6.7	3.0	1.1	1.1	1.1
D&C Gas	4.0	3.6	3.4	3.1	3.1	3.4
D&C Other Fuels	5.4	6.7	6.4	5.0	4.4	4.2
Other	7.1	6.8	5.7	6.4	6.7	7.0
Resuspension	40.7	40.9	39.2	40.4	41.1	41.8
C&D Dust	0.7	0.7	0.5	0.4	0.4	0.4
<b>Total</b>	<b>166.5</b>	<b>161.5</b>	<b>145.2</b>	<b>138.8</b>	<b>137.9</b>	<b>140.4</b>

### Notes:

(D&C = Domestic and Commercial – C&D = Construction and Demolition)

The summary graph represents emissions from each source stacked on top of one another, with the total stack height equalling the total emissions from all sources.

The numbers in the table are those used to plot the graph and represent the tonnes of pollution emitted into the atmosphere in that year (T/y).

The emissions are combined into reasonably self explanatory "Source Types".

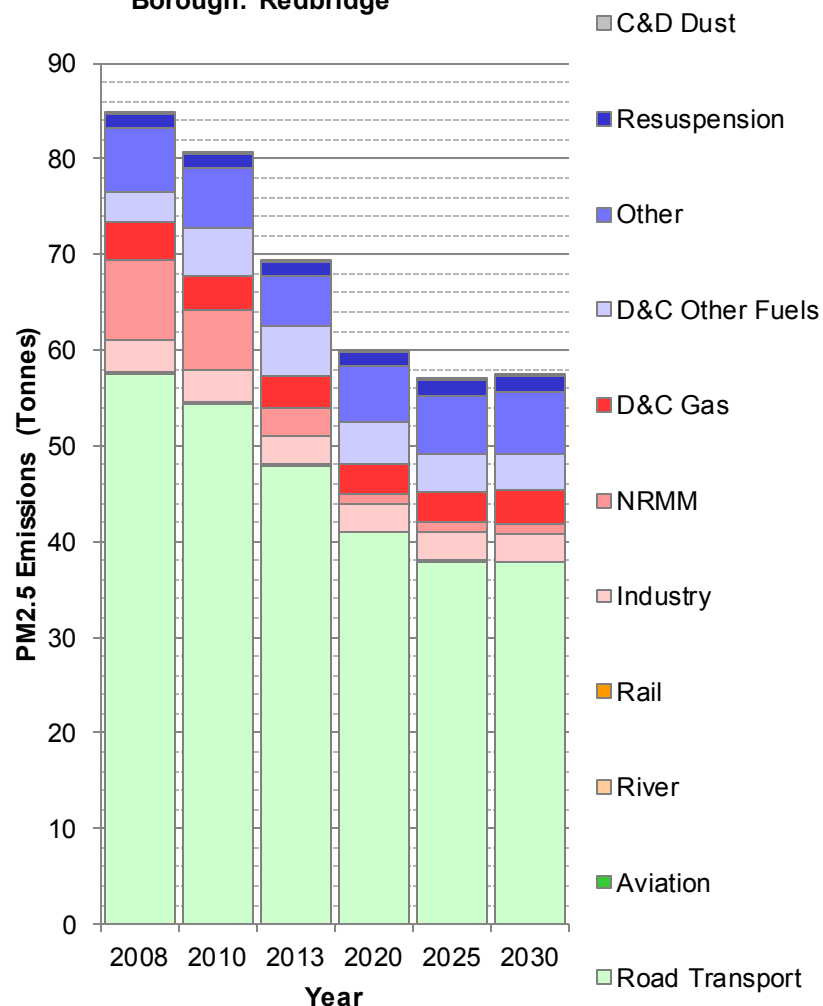
However, the categories: "Industry", "NRMM" and "Other" require further explanation:

- **Industry:** is the total emission from Part A and Part B industrial processes, combined.
- **Non-Road Mobile Machinery (NRMM):** is the total emissions from construction and industrial off road machines, combined.
- **Other:** is the total emission from a number of small sources including: agriculture, outdoor fires, garden emissions, forests, waste and waste transfer sites, combined.

# London Atmospheric Emissions Inventory

## PM2.5 Emissions - Redbridge

**Total PM2.5 Emissions by Source Type  
Borough: Redbridge**



Emissions (Tonnes) by	2008	2010	2013	2020	2025	2030
Road Transport	57.5	54.5	48.0	40.9	37.9	37.8
Aviation	0.0	0.0	0.0	0.0	0.0	0.0
River	0.0	0.0	0.0	0.0	0.0	0.0
Rail	0.2	0.2	0.2	0.1	0.1	0.1
Industry	3.3	3.3	2.9	2.9	2.9	2.9
NRMM	8.4	6.3	2.8	1.1	1.1	1.1
D&C Gas	4.0	3.6	3.4	3.1	3.1	3.4
D&C Other Fuels	3.2	4.8	5.3	4.4	3.9	3.9
Other	6.6	6.3	5.3	5.9	6.2	6.5
Resuspension	1.5	1.5	1.4	1.5	1.5	1.5
C&D Dust	0.1	0.1	0.1	0.0	0.0	0.0
<b>Total</b>	<b>84.8</b>	<b>80.5</b>	<b>69.3</b>	<b>59.9</b>	<b>56.9</b>	<b>57.2</b>

### Notes:

(D&C = Domestic and Commercial – C&D = Construction and Demolition)

The summary graph represents emissions from each source stacked on top of one another, with the total stack height equalling the total emissions from all sources.

The numbers in the table are those used to plot the graph and represent the tonnes of pollution emitted into the atmosphere in that year (T/y).

The emissions are combined into reasonably self explanatory "Source Types".

However, the categories: "Industry", "NRMM" and "Other" require further explanation:

- **Industry:** is the total emission from Part A and Part B industrial processes, combined.
- **Non-Road Mobile Machinery (NRMM):** is the total emissions from construction and industrial off road machines, combined.
- **Other:** is the total emission from a number of small sources including: agriculture, outdoor fires, garden emissions, forests, waste and waste transfer sites, combined.

# London Atmospheric Emissions Inventory

## CO2 Emissions - Redbridge

