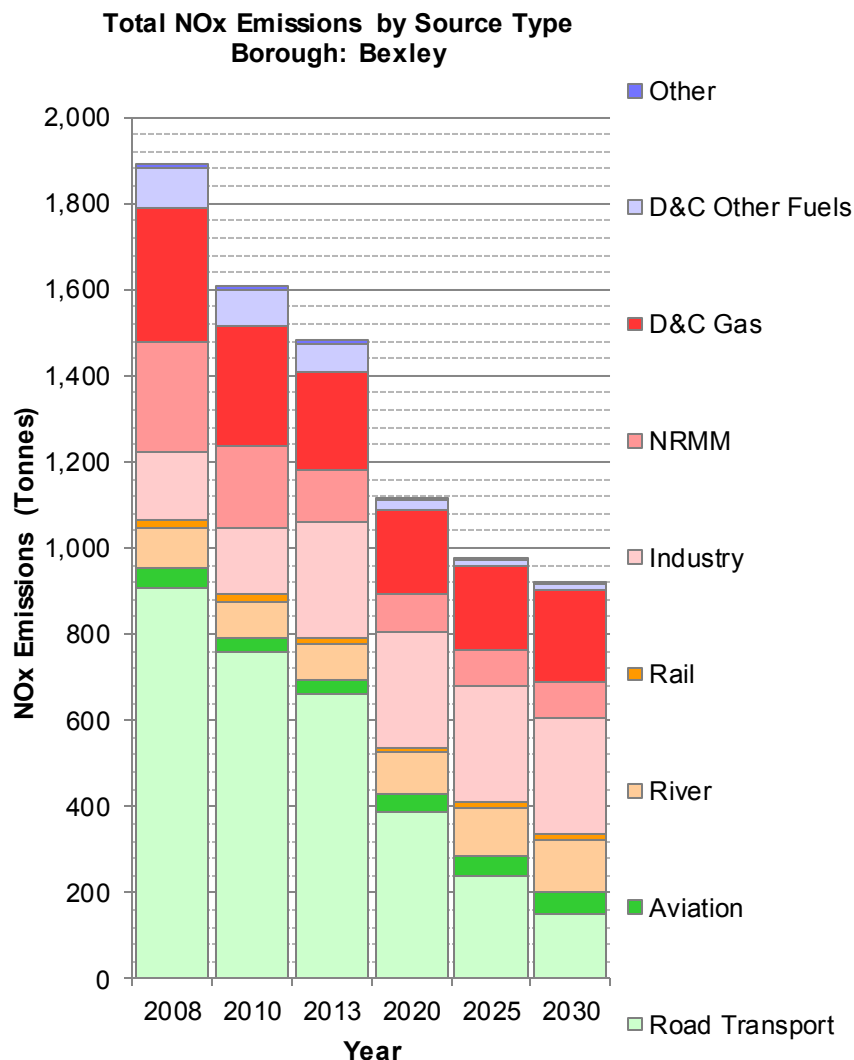


London Atmospheric Emissions Inventory

NOx Emissions - Bexley



Emissions (Tonnes) by	2008	2010	2013	2020	2025	2030
Road Transport	908	758	660	387	240	151
Aviation	44	33	34	40	45	49
River	94	83	82	98	113	125
Rail	19	18	17	13	13	13
Industry	157	157	267	267	267	267
NRMM	254	188	121	87	85	85
D&C Gas	312	280	227	196	194	212
D&C Other Fuels	94	85	68	25	17	15
Other	8	7	6	5	4	5
Total	1,892	1,608	1,481	1,118	978	921

Notes:

(D&C = Domestic and Commercial)

The summary graph represents emissions from each source stacked on top of one another, with the total stack height equalling the total emissions from all sources.

The numbers in the table are those used to plot the graph and represent the tonnes of pollution emitted into the atmosphere in that year (T/y).

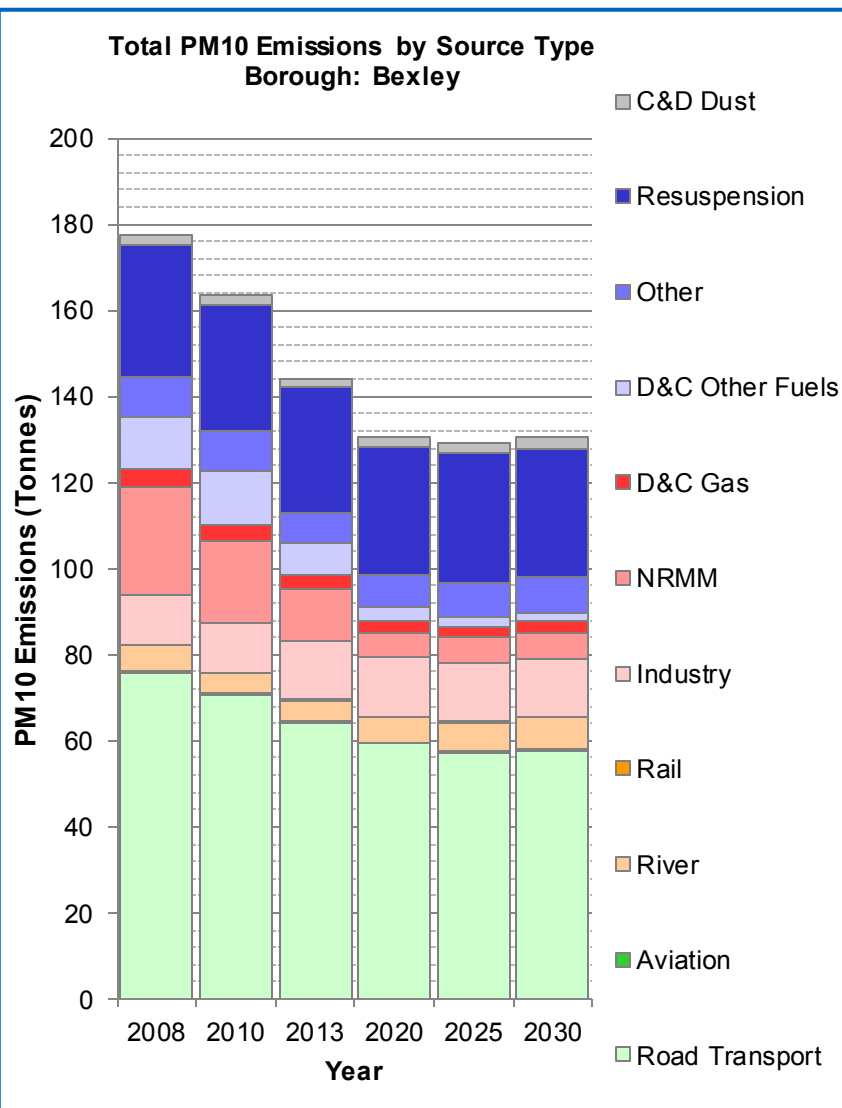
The emissions are combined into reasonably self explanatory "Source Types".

However, the categories: "Industry", "NRMM" and "Other" require further explanation:

- **Industry:** is the total emission from Part A and Part B industrial processes, combined.
- **Non-Road Mobile Machinery (NRMM):** is the total emissions from construction and industrial off road machines, combined.
- **Other:** is the total emission from a number of small sources including: agriculture, outdoor fires, garden emissions, forests, waste and waste transfer sites, combined.

London Atmospheric Emissions Inventory

PM10 Emissions - Bexley



Emissions (Tonnes) by	2008	2010	2013	2020	2025	2030
Road Transport	75.7	70.7	64.2	59.4	57.3	57.6
Aviation	0.3	0.2	0.2	0.2	0.3	0.3
River	6.0	4.7	5.0	5.8	6.7	7.5
Rail	0.3	0.2	0.2	0.2	0.2	0.2
Industry	11.7	11.7	13.7	13.7	13.7	13.7
NRMM	25.2	18.9	12.0	5.7	5.7	5.7
D&C Gas	3.8	3.6	3.0	2.6	2.5	2.7
D&C Other Fuels	12.3	12.8	7.5	3.4	2.6	2.2
Other	9.3	9.0	7.2	7.6	7.8	8.0
Resuspension	30.7	29.6	28.9	29.6	29.9	30.1
C&D Dust	2.2	2.0	2.2	2.6	2.6	2.6
Total	177.4	163.4	144.2	130.8	129.3	130.6

Notes:

(D&C = Domestic and Commercial – C&D = Construction and Demolition)

The summary graph represents emissions from each source stacked on top of one another, with the total stack height equalling the total emissions from all sources.

The numbers in the table are those used to plot the graph and represent the tonnes of pollution emitted into the atmosphere in that year (T/y).

The emissions are combined into reasonably self-explanatory "Source Types".

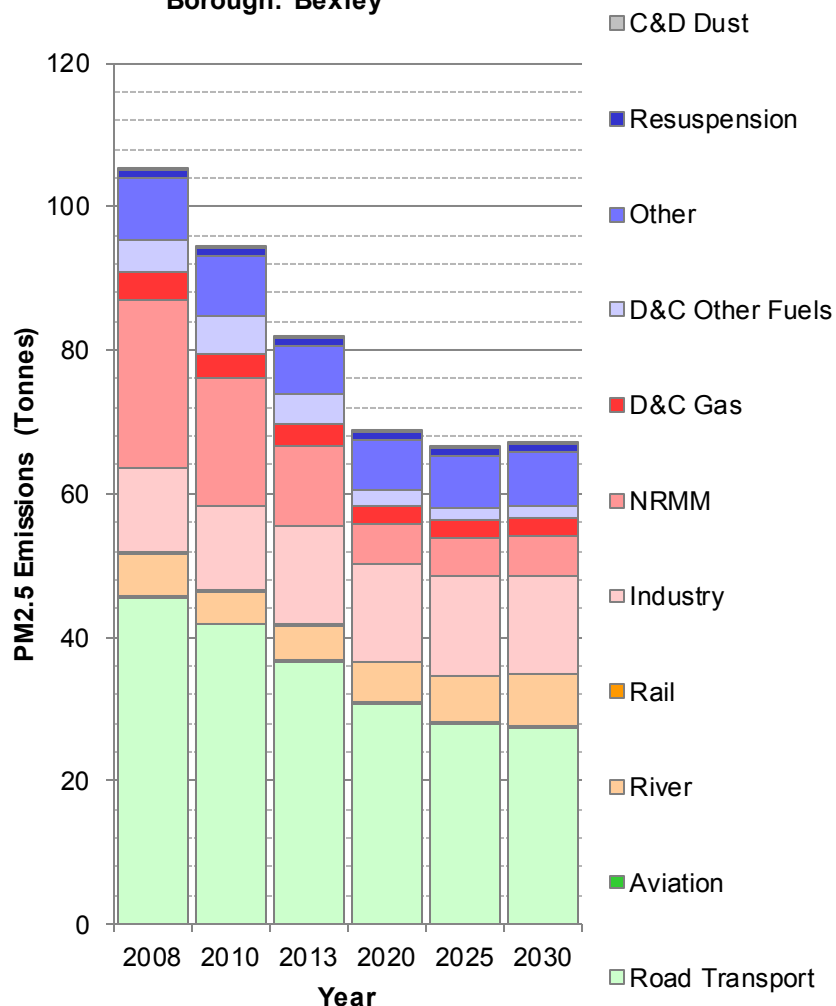
However, the categories: "Industry", "NRMM" and "Other" require further explanation:

- **Industry:** is the total emission from Part A and Part B industrial processes, combined.
- **Non-Road Mobile Machinery (NRMM):** is the total emissions from construction and industrial off-road machines, combined.
- **Other:** is the total emission from a number of small sources including: agriculture, outdoor fires, garden emissions, forests, waste and waste transfer sites, combined.

London Atmospheric Emissions Inventory

PM2.5 Emissions - Bexley

Total PM2.5 Emissions by Source Type
Borough: Bexley



Emissions (Tonnes) by	2008	2010	2013	2020	2025	2030
Road Transport	45.6	41.7	36.6	30.8	27.9	27.4
Aviation	0.3	0.2	0.2	0.2	0.3	0.3
River	5.7	4.4	4.7	5.5	6.4	7.1
Rail	0.2	0.2	0.2	0.2	0.2	0.2
Industry	11.7	11.7	13.7	13.7	13.7	13.7
NRMM	23.7	17.8	11.3	5.4	5.4	5.4
D&C Gas	3.8	3.6	3.0	2.6	2.5	2.7
D&C Other Fuels	4.4	5.2	4.2	2.2	1.8	1.6
Other	8.5	8.3	6.6	7.0	7.2	7.4
Resuspension	1.1	1.1	1.1	1.1	1.1	1.1
C&D Dust	0.2	0.2	0.2	0.3	0.3	0.3
Total	105.2	94.4	81.8	68.8	66.6	67.1

Notes:

(D&C = Domestic and Commercial – C&D = Construction and Demolition)

The summary graph represents emissions from each source stacked on top of one another, with the total stack height equalling the total emissions from all sources.

The numbers in the table are those used to plot the graph and represent the tonnes of pollution emitted into the atmosphere in that year (T/y).

The emissions are combined into reasonably self explanatory "Source Types".

However, the categories: "Industry", "NRMM" and "Other" require further explanation:

- **Industry:** is the total emission from Part A and Part B industrial processes, combined.
- **Non-Road Mobile Machinery (NRMM):** is the total emissions from construction and industrial off road machines, combined.
- **Other:** is the total emission from a number of small sources including: agriculture, outdoor fires, garden emissions, forests, waste and waste transfer sites, combined.

London Atmospheric Emissions Inventory

CO2 Emissions - Bexley

