



CLEVER Cities

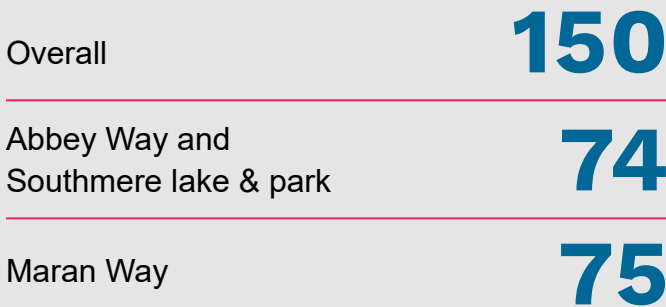
South Thamesmead Survey

Introduction

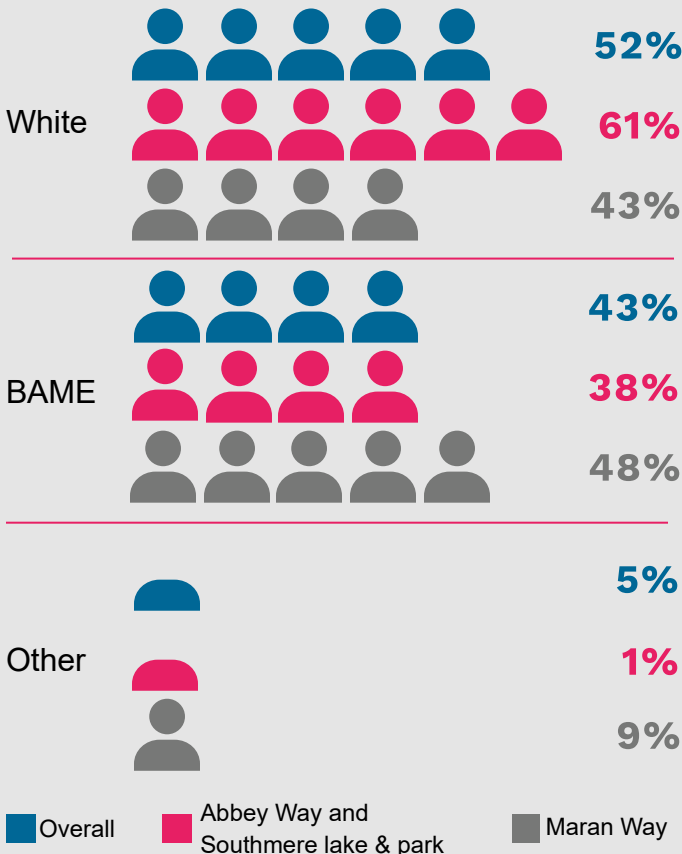
This report contains findings from the CLEVER Cities Survey, conducted by Enventure Research in July 2021. A total of 150 interviews were carried out face-to-face by Interviewer Quality Control Scheme (IQCS) trained interviewers in different locations across the South Thamesmead estate in London, UK. The results are based on 150 responses unless otherwise stated. 'Don't know' and 'Prefer not to say' responses have not been displayed within this report.

Respondent profile

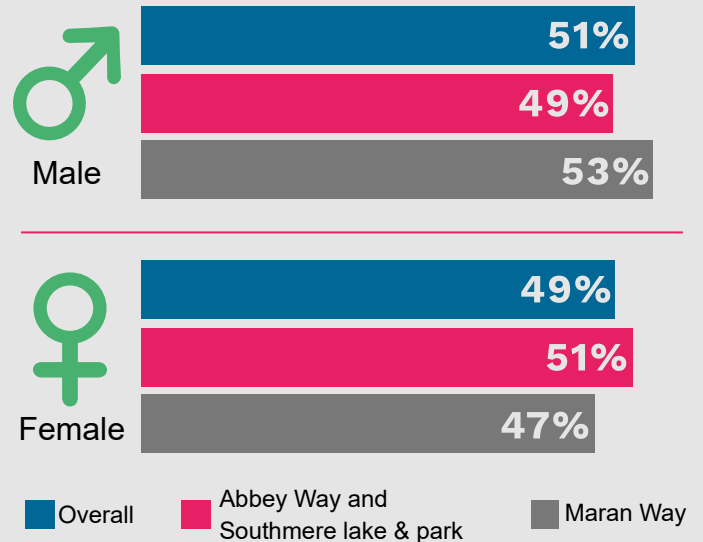
Number of interviews*



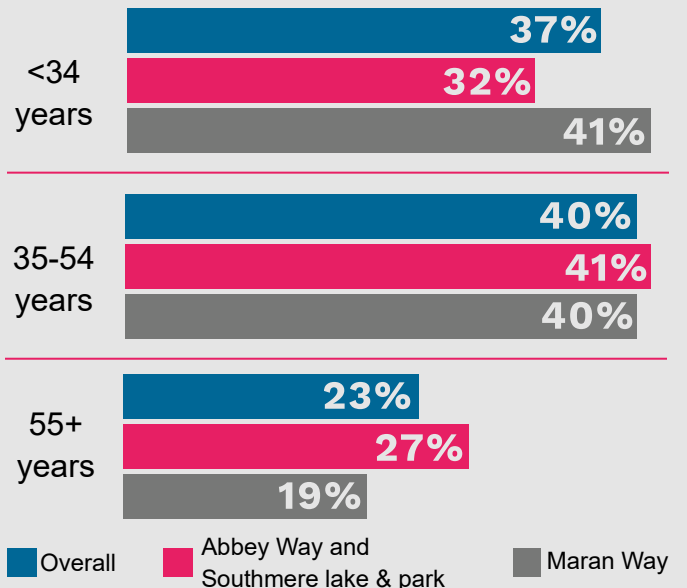
Ethnicity



Gender



Age

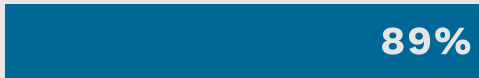


* Please note total number of interviews split between areas does not total 150 due to number of areas being reduced from three to two after fieldwork had started

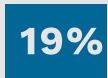
Neighbourhood and community

Women's safety

Women were **significantly less likely to feel safe** when walking alone in their neighbourhood **at night** compared with during the day



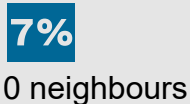
Feeling safe when walking alone in neighbourhood during the day



Feeling safe when walking alone in neighbourhood at night

Neighbours

Number of people spoken to from the same street **more than 2-3 times** in the last 6 months



0 neighbours



1-5 neighbours



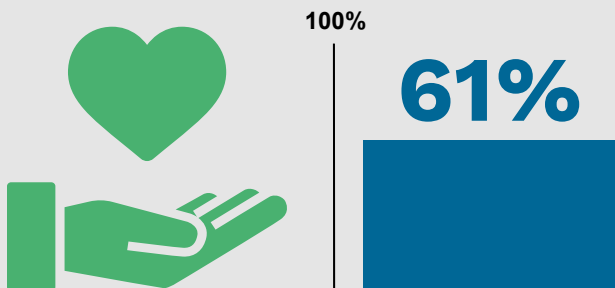
6-10 neighbours



11+ neighbours

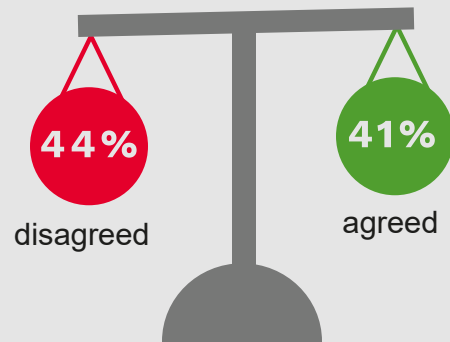
Males and **established residents** (6+ years) were more likely to have spoken to 6-10 neighbours

The majority said they **never borrow things or exchange favours** with their neighbours



Neighbourhood equality

Respondents were more likely to **disagree** with the statement "In my neighbourhood, all persons regardless of age, colour, national origin or income **can influence decision making**"

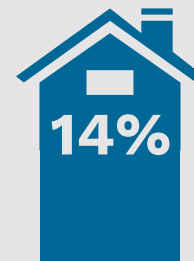


Neighbourhood feelings

Disagreement with statements about the neighbourhood



"I plan to stay in my neighbourhood for a long time"



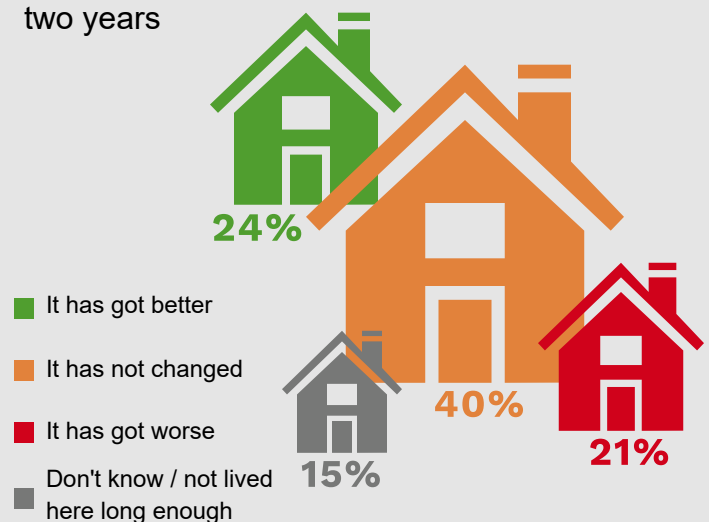
"I feel like I belong to my neighbourhood"



"I am proud to say I live in South Thamesmead"

Neighbourhood changes

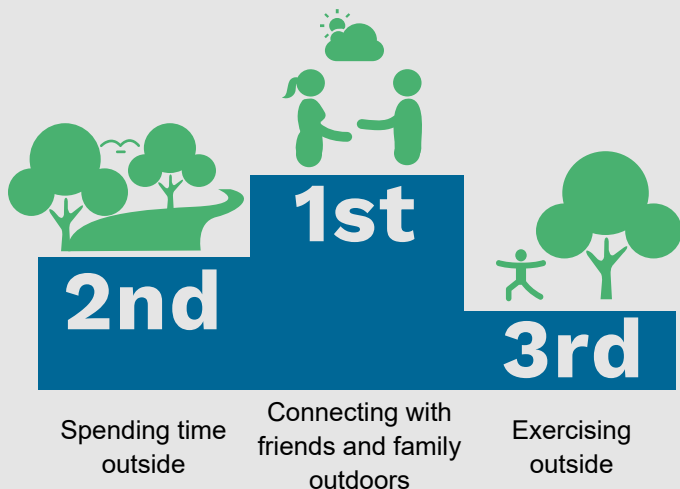
Six in ten thought that their **neighbourhood had got worse or not changed** over the last two years



Outdoors and nature

Covid-19 activities

Most common activities that respondents have spent an **increased amount of time doing** since Covid-19 restrictions began



Despite respondents spending more time connecting with friends and family outdoors, only **11%** reported that they **noticed nature more**

Happiness in nature

100%



95%

of respondents **agreed** with the statement **"Being in nature makes me very happy"**

Flooding*

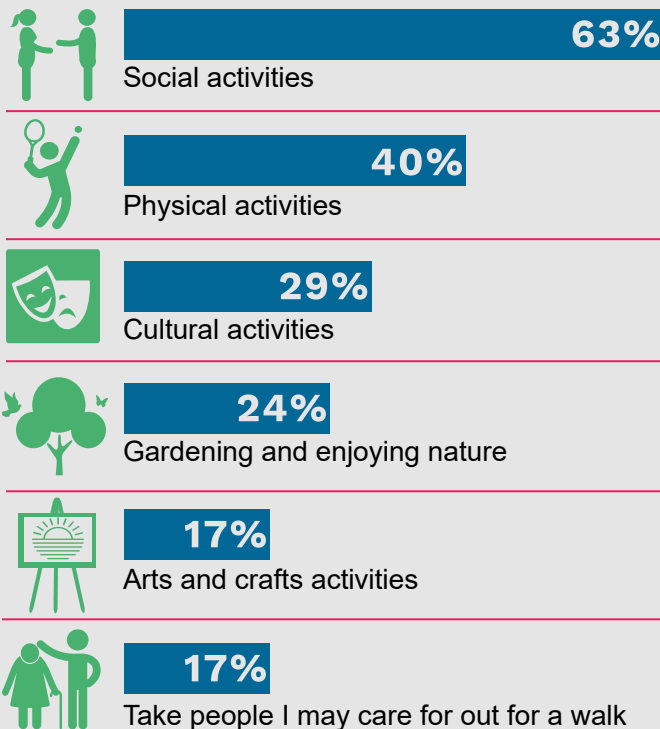
100%



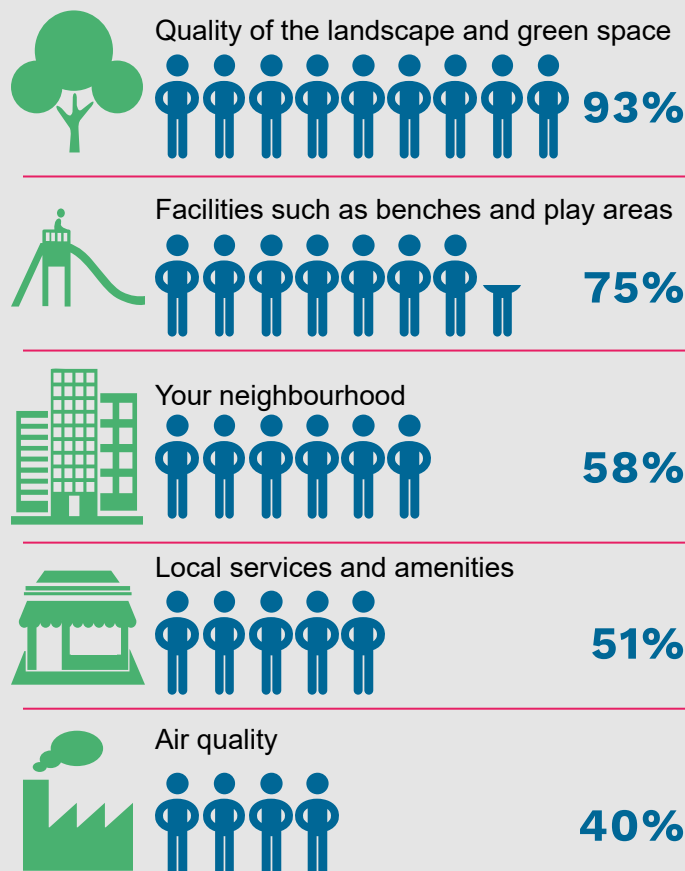
79%

of respondents **agree** that the area suffers from flooding when it rains

Outdoor activities



Satisfaction with outdoors



A further **49%** were **neither satisfied nor dissatisfied** with the air quality

Abbey Way, Southmere lake & park and Maran Way

Abbey Way and Southmere lake & park*

Agreement with statements



"It is a safe place to walk"



"There are lots of plants and trees to look at when I am out and about"



"It is a good place for mental health and wellbeing"



"It provides good quality places for children to play outdoors"



"It is a place where people would want to spend time"



Maran Way^

Agreement with statements



"It is a safe place to walk"



"There are sufficient places to stop, rest and chat with neighbours"



"On a hot and sunny day there are places I can find shade when out and about"



"It is sufficiently light at night"



"It suffers from flooding when it rains"

