

Mayor of London

London Heat Map +
Heat Mapping Study - Royal
Borough of Greenwich

01

Issue | 30 March 2012

This report takes into account the particular instructions and requirements of our client.

It is not intended for and should not be relied upon by any third party and no responsibility is undertaken to any third party.

Job number 218639-00

Document Verification

ARUP

Job title		London Heat Map +		Job number		218639-00	
Document title		Heat Mapping Study - Royal Borough of Greenwich				File reference	
Document ref		01					
Revision	Date	Filename	Greenwich_Heat_Mapping_2012-03-15.docx				
Greenwich Report Issue.docx	16 March 2012	Description	First draft				
			Prepared by	Checked by	Approved by		
		Name	Lewis Stevens	Anson Yan	Paula Kirk		
		Signature					
Draft 2 Issue		Filename					
		Description					
			Prepared by	Checked by	Approved by		
		Name	Lewis Stevens	Anson Yan	Paula Kirk		
		Signature					
Issue	30 Mar 2012	Filename					
		Description					
			Prepared by	Checked by	Approved by		
		Name	Lewis Stevens	Anson Yan	Paula Kirk		
		Signature					
		Filename					
		Description					
			Prepared by	Checked by	Approved by		
		Name					
		Signature					
Issue Document Verification with Document							<input checked="" type="checkbox"/>

Contents

	Page
Executive Summary	1
1 Introduction	3
2 Background	3
2.1 Decentralised Energy and District Heating	3
2.2 The history of heat mapping: DEMaP	4
3 Policy context	7
3.1 UK climate change agenda	7
3.2 London Plan	7
3.3 Borough policy	8
4 Decentralised Energy in London	9
5 Methodology	10
5.1 Phase 1: Data Collection	10
5.2 Phase 2: Identifying opportunities for potential DH networks	11
6 Cluster Analysis for the Royal Borough of Greenwich	13
6.1 Heat Clusters within the Royal Borough of Greenwich	15
6.2 Cross-Borough opportunities	32
7 Implementation Plan	34
8 Conclusions and Recommendations	37

Appendices

Appendix A

Populated Template and London Heat Map Heat Load Typologies

A1 Populated template

A2 London Heat Map Heat Load Typologies

Executive Summary

The aim of the London Heat Map and the Heat Map Reports is to identify opportunities for decentralised energy networks in London. This process is part of the Mayor of London's drive to deliver 25% of London's energy through decentralised energy (DE) by 2025.

Arup has been commissioned by the Greater London Authority to complete the London Heat Map and provide each of the Boroughs remaining from the DEMaP programme with a report outlining their potential opportunities for DE; the Royal Borough of Greenwich.

The heat load and supply data used for the London Heat Map has been sourced by the Royal Borough of Greenwich and supplemented by additional data retrieved through publically available central databases. From this, Arup have performed a high level mapping study to identify clusters where potential opportunities for decentralised energy networks may exist.

Within the Royal Borough of Greenwich, eight clusters have been identified, and two of them have been assigned as "high" priority and three as "medium" priority by the Royal Borough of Greenwich. These are:

- Kidbrooke Village Cluster
- Greenwich Peninsula Cluster
- Woolwich Arsenal Cluster
- Woolwich Common Cluster
- River Heights Cluster

The first three clusters listed above have a large amount of regeneration planned, redevelopment of this scale represents a significant opportunity for decentralised energy, offering the potential to integrate bespoke energy centres into the new development, and design building and site heating systems to optimise the use of district heating and CHP.

At the centre of the cluster is the Kidbrooke Village redevelopment, which will be delivered in two phases. The redevelopment consists of 4,000 residential units and 34,000 square meters of non-residential space and includes a proposed district heating network. In addition, there are a number of new and existing schools and leisure centres in close proximity which could provide a diverse heat demand to a wider DE network.

The Greenwich Peninsula cluster focuses on the existing district heating network at the Greenwich Millennium Village and the O2 Stadium site and the proposed district heating network for the Greenwich Peninsula Regeneration Limited (GPRL) site. The new redevelopment site consists of 10,000 new homes and 340,000 square meters of mixed use space.

The Woolwich Arsenal cluster also includes a major regeneration project – the Royal Arsenal, which comprising over 4,000 residential apartments, and over 25,000 square metres of commercial premises including a new Crossrail station, museums, office and hotel opportunities as well as healthcare and educational facilities is due to be completed by 2021.

The Woolwich Common and River Heights clusters are much smaller scale compared to the other three opportunities. However, predominately buildings within the cluster are under public ownership, which will be helpful in securing long term energy supply contracts which can significantly de-risk potential DE schemes.

1 Introduction

The London Heat Map was developed through the London Development Agency (LDA) Decentralised Energy Master Planning (DEMaP) programme in 2009 – 2010 with the aim of providing information about heat loads in London to help identify opportunities for decentralised energy.

In November 2011, the GLA commissioned Arup to complete the heat mapping exercise with the following tasks;

- to include the remaining ten London Boroughs and therefore provide a consistent London Heat Map
- to provide each of these remaining Boroughs with a report outlining potential opportunities for decentralised energy

This report outlines the potential opportunities for decentralised energy in the Royal Borough of Greenwich. To compile it, Arup consultant engineers worked in partnership with the Royal Borough of Greenwich to carry out the data collection and analysis to identify opportunities for decentralised energy.

This report sets out the methodology employed for the heat mapping process and presents the findings of potential decentralised energy opportunity within the Royal Borough of Greenwich.

The data collected from the Royal Borough of Greenwich has also been uploaded onto the online interactive GIS London Heat Map (www.londonheatmap.org.uk).

2 Background

Energy generated by centralised power stations and transmitted through the national grid can be highly inefficient and wasteful. One of the Mayor's top priorities for reducing London's CO₂ emissions is to reduce the capital's reliance on centralised power stations. This means increasing the use of local, low carbon energy supplies through decentralised energy systems.

In 2010, residential, commercial and public sector buildings represented over 40% of UK greenhouse gas emissions¹; reducing the carbon content of the heat and electricity supplied to these buildings is clearly a vital undertaking in efforts to mitigate climate change.

2.1 Decentralised Energy and District Heating

In broad terms, Decentralised Energy (DE) is the local or sub-regional supply of energy from a local source, known as the Energy Centre (EC), to local end users via a network. In the case of heat supply, the network is known as a District Heating (DH) network. The EC normally hosts one or more Combined Heat and Power (CHP) units as well as back-up boilers and thermal stores.

¹ Building Britain: The path to sustainable growth for the built environment (2012). Aldersgate Group.

CHP is the simultaneous generation of heat and power in a more efficient way than if the two forms of energy would have been produced separately. Heat is recovered from the power generation process and is typically supplied in the form of hot water.

DE will play a key role in developing a more sustainable, secure and cost-effective energy supply for London, and help target a number of important problems such as climate change and fuel poverty.

2.2 The history of heat mapping: DEMaP

The Mayor of London set a target to supply a quarter of London's energy from decentralised sources by 2025.

To this end, the DEMaP (Decentralised Energy Master Planning) programme was introduced by the London Development Agency² (LDA) in 2009. The LDA allocated nearly £5 million towards decentralised energy over four years from 2009, with additional support made available through the JESSICA (Joint European Support for Sustainable Investment in City Areas) fund to unlock the development of decentralised energy in London.

The DEMaP programme was developed to enable boroughs to identify opportunities for decentralised energy, and to develop the capacity to realise those opportunities. This was based on a trajectory of work packages, broken down into three phases, from initial capacity building through to feasibility study and project delivery. The heat mapping exercise was originally carried out during the first phase.

The London Heat Map was developed as part of DEMaP to help address the lack of information and certainty surrounding London's heat loads. It is intended to be used by policy and decision-makers to help identify opportunities for DE in their area and to develop new decentralised energy schemes and enable the market to make informed investment decisions without risking significant development costs.

The first round of heat mapping collected data from 23 London boroughs which was used to populate the London Heat Map (Figure 1).

² The functions of the London Development Agency are being folded in the Greater London Authority as a result of the government announcement in June 2010 that all Regional Development Agencies be abolished by March 2012.

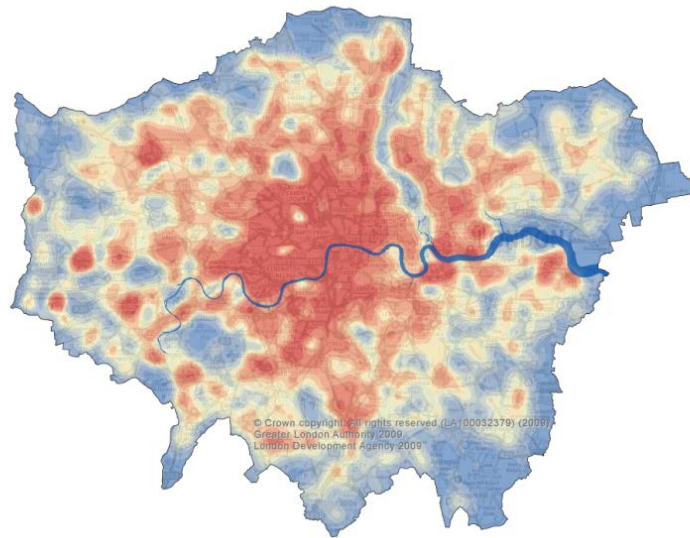


Figure 1: The London Heat Map, as viewable at www.londonheatmap.org.uk

The second round of heat mapping has been undertaken by the GLA in November 2011 and the remaining ten boroughs were invited to participate in order to complete the heat map for the entirety of the Greater London area.

The aims of the heat mapping exercise are:

- To identify potential opportunity areas for the development of decentralised energy networks across London, and
- To provide an evidence base for local authority and GLA planning policies requirements for connections to district heating networks.

The image below illustrates the status of Heat Mapping in London Boroughs. Those in red have completed Heat Mapping and the data results are available on the Heat Map website, along with a report of the opportunity area (www.londonheatmap.org.uk). Boroughs highlighted in yellow have provided data which was uploaded to the London Heat Map having completed independent data collection and mapping exercises. The Boroughs highlighted in blue are part of the final tranche of Heat Mapping currently underway.

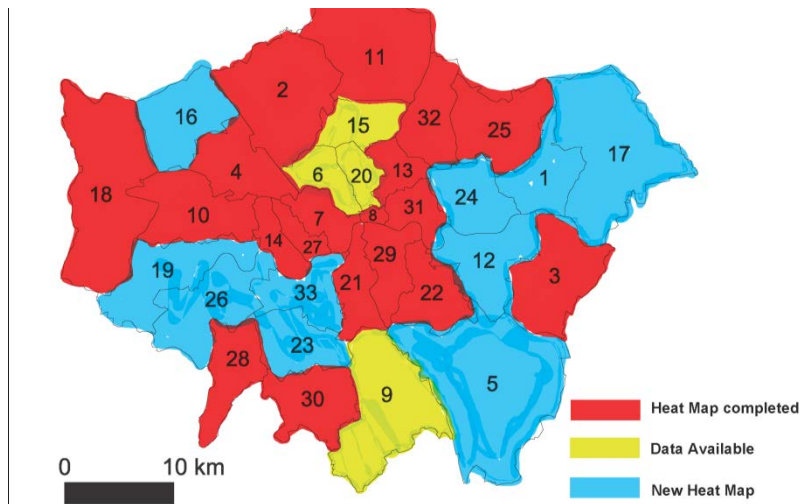


Figure 2: The Heat mapping status of London Boroughs.

Those remaining London Boroughs involved in the second round of Heat Map were:

1. London Borough of Barking and Dagenham
5. London Borough of Bromley
7. City of Westminster
12. Royal Borough of Greenwich
16. London Borough of Harrow
17. London Borough of Havering
19. London Borough of Hounslow
23. London Borough of Merton
24. London Borough of Newham
26. London Borough of Richmond upon Thames
33. London Borough of Wandsworth

3 Policy context

3.1 UK climate change agenda

The UK Government has responded to the climate change agenda with a range of climate change legislation, targets and actions to reduce carbon (GHG) emission, including:

- Setting a national target of 80% reduction in annual GHG emissions compared to 1990 levels by 2050, with an interim target of 34% reduction by 2020
- Establishing the world's first national Climate Change Act to tackle the threat of climate change, and
- Introducing financial measures such as: the Renewables Obligation (RO); the Feed in Tariff (FIT); the Renewable Heat Incentive (RHI); and the Carbon Reduction Commitment (CRC).

Legislation is intended to support the transition to a low carbon economy – an economy that minimises environmental impact, is sustainable and limits GHG emissions. The national government's agenda is being taken forward by all the local authorities in the UK.

3.2 London Plan

The London Plan 2011 sets out the spatial development strategy for London. Chapter 5 specifically addresses London's Response to Climate Change and sets out the following policy requirements:

Policy 5.2 – Minimising carbon emissions

This policy sets out a range of CO₂ emission targets for new developments which must be achieved through a hierarchy of:

- Be lean: use less energy
- Be clean: supply energy efficiently
- Be green: use renewable energy

Policy 5.5 – Decentralised energy networks

- Strategic: The Mayor expects 25 per cent of the heat and power used in London to be generated through the use of localised decentralised energy systems by 2025. In order to achieve this target the Mayor prioritises the development of decentralised heating and cooling networks at the development and area wide levels, including larger scale heat transmission networks.
- LDF preparation: Within LDFs boroughs should develop policies and proposals to identify and establish decentralised energy network opportunities. As a minimum boroughs should:
 - i. Identify opportunities for expanding existing networks and establishing new networks. Boroughs should use the London Heat Map tool and consider any new developments, planned major infrastructure works and energy supply opportunities which may arise

- ii. Develop energy master plans for specific decentralised energy opportunities which identify:
 - major heat loads (including anchor heat loads, with particular reference to sites such as universities, hospitals and social housing)
 - major heat supply plant
 - possible opportunities to utilise energy from waste
 - possible heating and cooling network routes
 - implementation options for delivering feasible projects, considering issues of procurement, funding and risk and the role of the public sector.

3.3 Borough policy

Royal Greenwich encourages the use of Decentralised Energy systems through its adopted and emerging policies.

The Borough's UDP, 2006, requires all larger new developments to incorporate renewable energy, and this can include Combined Heat and Power. The UDP states: "Combined Heat and Power (CHP), on its own and in conjunction with Community Heating systems, can provide cost effective, reliable energy and heating at high levels of efficiency and relatively low levels of pollution. CHP engines are already used at a number of Council-sponsored and private sector buildings in the Borough, including the Waterfront Leisure Centre, Woolwich, the Glyndon Road Estate and Amylum UK Ltd, Tunnel Avenue. Community Heating is in use in the Greenwich Millennium Village."

Policy E9 of the UDP states:

"The Council will expect all new developments with a floorspace greater than 1000 sqm or residential developments of 10 or more units to incorporate renewable energy production equipment to provide at least 10% of the predicted energy requirements where there is no conflict with other policies in the Plan."

The Draft Core Strategy with Development Management Policies also encourages the reduction of carbon emissions through Decentralised Energy.

Draft Policy E1 states:

"Carbon emissions will be reduced by:

- Requiring all developments, including redevelopment and extensions to existing developments, with a gross floor area greater than 500sqm, or residential developments of five or more units, to reduce carbon dioxide emissions by at least 20% through the use of renewable energy generation;
- Supporting opportunities for large scale decentralised energy networks; and
- Requiring all development, including redevelopment and extensions to existing development, to incorporate a Combined Heating /Combined Heat and Power/Combined Cooling Heat and Power system, where it is demonstrated that this is unfeasible developments will be required to include a connection to a network for immediate or future use."

4 Decentralised Energy in London

Following on from the successful DEMaP programme, the GLA is committed to further strategic development and support to deliver more DE schemes within London, through the Decentralised Energy for London programme. Set up with €3.3m in funding, 90% of which was secured from the European Investment Bank's ELENA facility, the Mayor's Decentralised Energy for London programme will provide boroughs and other project sponsors with technical, financial and commercial assistance to develop and bring DE projects to market.

London has been home to DH networks for a number of years, with schemes in Whitehall, Pimlico, Barkantine and the City of London, to name but a few, set to be joined by many more in the near future. There will be a growth in interconnections between existing schemes, and the potential development of a number of high-capacity strategic networks, notably SELCHP, the London Thames Gateway Heat Network, and the Upper Lee Valley Strategic Heat Network transporting industrial volumes of waste heat from power stations over long distances, which could allow for truly significant carbon savings.

Existing schemes and those planned for future development are shown in the London "Vision Map" (Figure 3). These can be viewed in more detail on the London Heat Map website by turning on the vision layer (www.londonheatmap.org.uk).

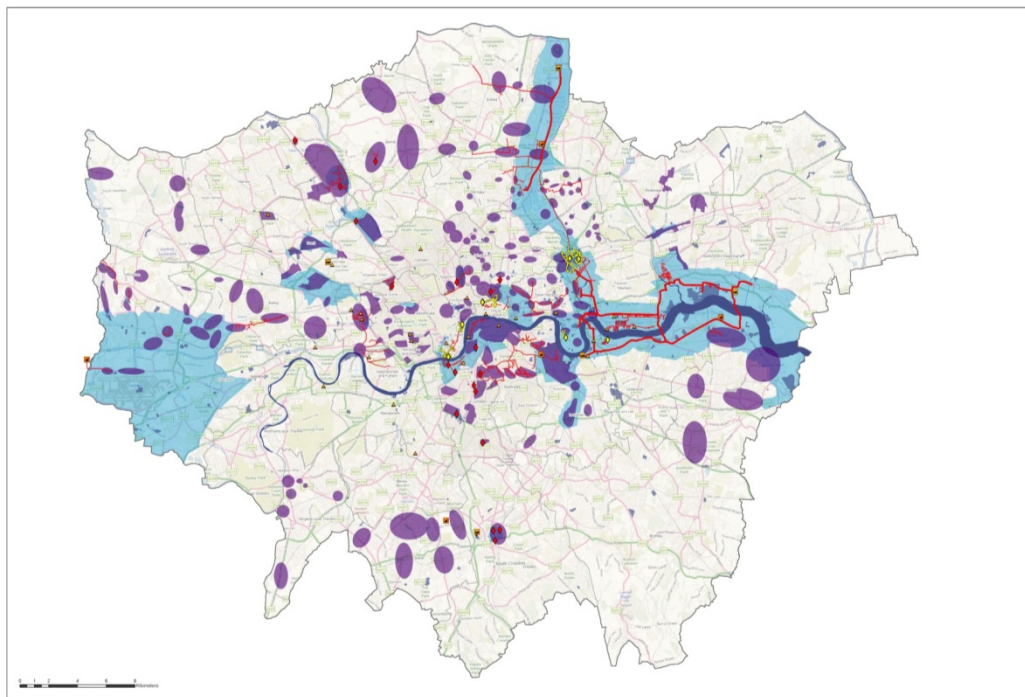


Figure 3: The London Decentralised Energy for London Vision Map 2012

5 Methodology

The methodology for heat mapping was developed by Arup in conjunction with the LDA / GLA.

The heat mapping process identifies potential DE opportunities in each borough, and where relevant cross-borough opportunities. The process concludes with an implementation plan developed jointly with the Royal Borough of Greenwich to identify how these opportunities could be progressed. The process consists of two main phases:

Phase 1: Data collection

This data collection should create a reliable database and identify:

- Major heat loads (existing and planned)
- Major heat supply plants (existing and planned)
- District Heating (DH) networks (existing and planned)

Phase 2: Identifying opportunities for potential DE schemes

This process includes the identification of ‘clusters’ of buildings and development areas that have the best potential for future DH networks and / or extending existing heat networks.

5.1 Phase1: Data Collection

The aim of Phase 1 is to populate the London Heat Map with data points from which the analysis in Phase 2 can take place. These data points should identify both existing and already planned heat loads, heat supply plants and district heating networks.

Some data points within the Royal Borough of Greenwich already existed on the London Heat Map from the first round of heat mapping that took place under the DEMaP programme. The data for these points had been collected from central data bases such as the London Fire and Emergency Planning Authority (LFEPA) and the London Development Database 2004 (LDD).

To complete the dataset for the Royal Borough of Greenwich, the borough was asked to source the data and verify that which was already in the London Heat Map. The following data locations were suggested to the borough to source the data:

- The former NI 185 register
- The Council’s Property Services
- Specific borough documents (such as Asset Management Plans)
- Members of the borough Local Strategic Partnership
- Council’s Planning Applications (for large scale applications)
- Council boiler replacement programme
- Private Landowners / Developers
- Other public sector bodies
- Display Energy Certificates (DEC)
- CRC Energy Efficiency data

The typologies used to define the heat loads in the London Heat Map are available in Appendix A.

An inception meeting was held on the Woolwich Centre building on 19th January 2012 with representatives from the Royal Borough of Greenwich. Pippa Hack, the Assistant Director Area Regeneration, Ben Addington, the Carbon Reduction Officer, Holly Gilbert, the Spatial Strategy Manager and Andrew Parker, the Area Planning Manager attended the meeting. Following the meeting, the Royal Borough of Greenwich carried out the data gathering exercise for heat mapping.

The full data set provided is available in Appendix A.

5.2 Phase 2: Identifying opportunities for potential DH networks

The aim of Phase 2 is to use the populated London Heat Map to identify opportunities for potential DH networks both within the Royal Borough of Greenwich, and across borough borders.

To do this, the following factors were considered to identify clusters of buildings with the potential to form a DH network:

- The **physical proximity and heat load density** of buildings. This is important to identify high level cluster opportunities and to identify the scale of infrastructure required to meet the demand.
- The presence of **existing anchor loads** which could be able to trigger a DE network. An anchor load is a heat load that is large, has a relatively constant load profile and is therefore suitable for a long-term heat supply or purchase contract. Anchor loads are important as they reduce the risk associated with securing connection of multiple heat loads.
- The presence of **heat load diversity** throughout the buildings identified. Diversity is important to balance the overall load profile of the DH network and make more efficient use of the heat generation source.
- The presence of **planned developments**. This is important for a number of reasons, firstly that the network/parts of the network can be built out as part of the development, reducing the disruption specifically associated with the DH network. Secondly those buildings within the development can be required to connect through their planning consent, securing heat demand. Finally, the avoided costs of installing individual heat supply plant per unit instead of smaller interface units with communal heat off-take can improve the economic and financial viability of new schemes, and often results in additional floor space available to the developer.
- The presence of **publically owned buildings**. Public organisations can have policy objectives which may make them more likely to connect to DH networks, such as carbon reduction commitments and tackling fuel poverty.

Having a cluster of buildings which are characterised by as many of the above factors as possible is considered essential for a more efficient and cost effective DH network.

The identified clusters within the Royal Borough of Greenwich were then visualised for this report using the London Heat Map data, along with the key

reasons for their identification and the recommended next steps should the Royal Borough of Greenwich wish to investigate the cluster opportunity further. All proposals are subject to securing funding as well as Member consideration and approval.

Where buildings within an identified cluster had no fuel consumption data, this has been calculated using recognised heat consumption benchmarks for the building typology and the gross internal floor area of the building. In cases where the floor area was also unavailable this has been approximated. The estimated capacity required for each cluster has then been calculated using the recognised average number of hours that heat is required in a year (2250hrs/year).

6 Cluster Analysis for the Royal Borough of Greenwich

The clusters for the Royal Borough of Greenwich have been identified, following the methodology for Phases 1 and 2 of the heat mapping process set out above. The clusters are visualised on the map in Figure 4. Each cluster is addressed in more detail in the following report sections.

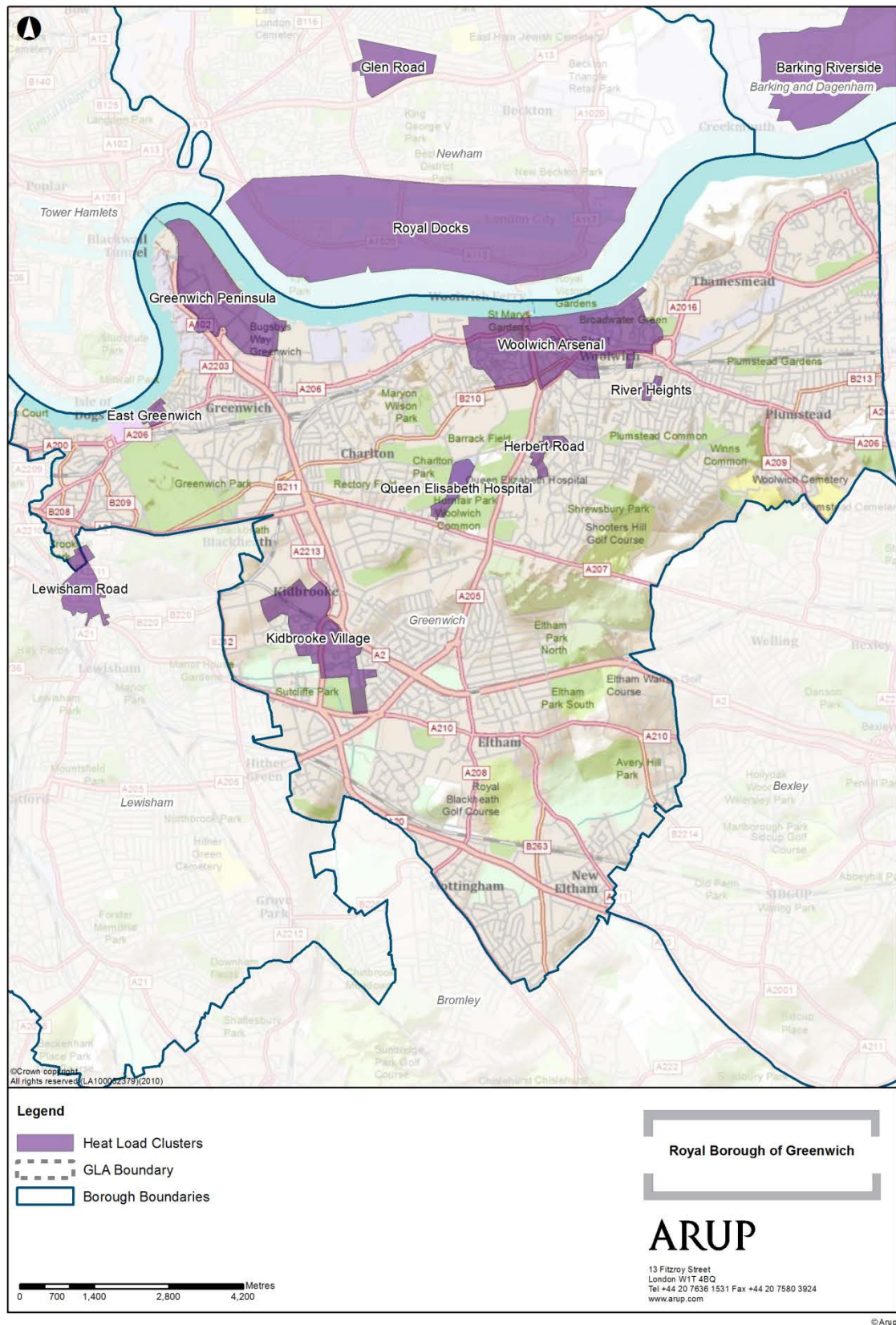


Figure 4: Identified heat clusters for the Royal Borough of Greenwich

6.1 Heat Clusters within the Royal Borough of Greenwich

Each of the clusters is described in more detail below. The descriptions are based on a desk top analysis of data provided by the borough and as such provide a high level indication of potential opportunities for DE schemes. It should be noted that site surveys were not carried out nor were any potential stakeholders contacted as part of this analysis. The cluster analysis represents potential opportunities that will require further feasibility and assessment before progressing to the next stage of development.

6.1.1 Kidbrooke Village Cluster

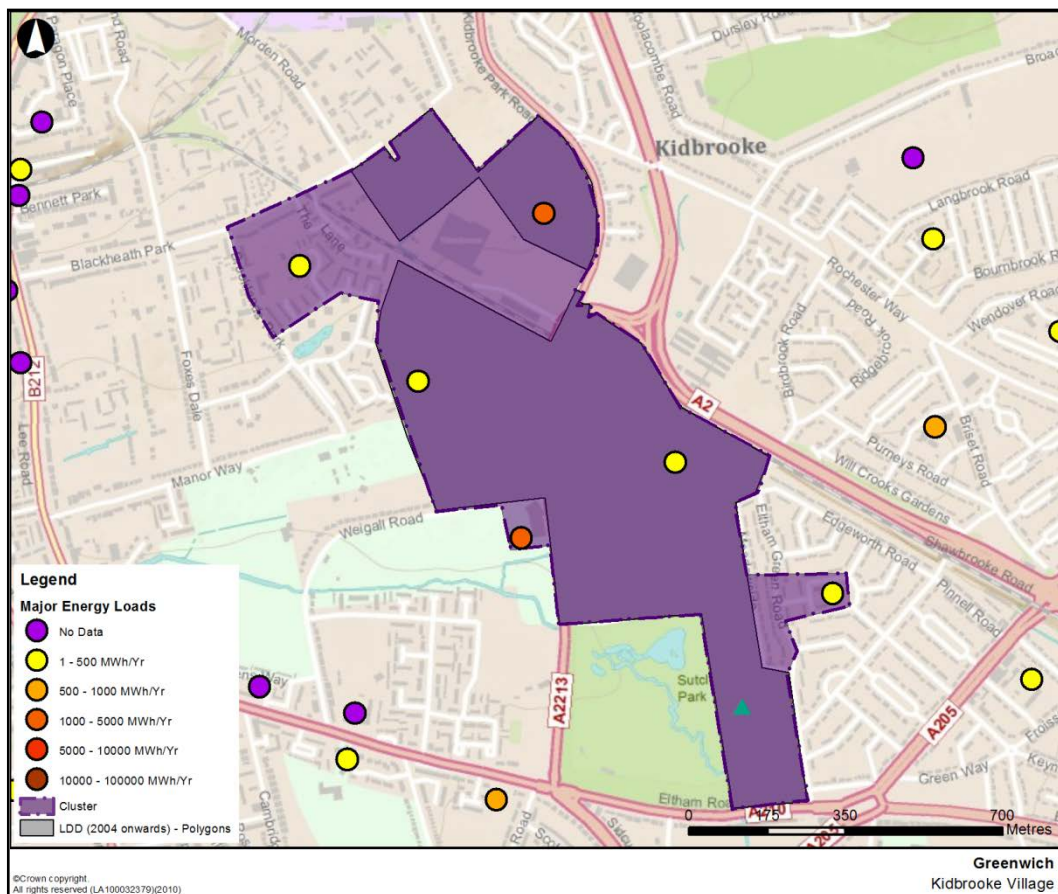


Figure 5: Kidbrooke Village

The Kidbrooke Village cluster area represents a significant decentralised energy opportunity. Phases 1 and 2 of this development, currently under construction, include a DE network.

Redevelopment of this scale represents a significant opportunity for decentralised energy, offering the potential to integrate bespoke energy centres into the new development, and design building and site heating systems to optimise the use of district heating and CHP.

A district heating network is proposed for the redevelopment, which will consist of 4,000 residential units, and 34,000 square meters of non-residential space.

The north of the regeneration site incorporates a number of new school buildings providing 23,000 square meters of educational floor space. This site could be considered for a network connection to the southern development site (if this has not already been undertaken) with particular consideration given to the crossing of the A213 and overland rail track between the two development sites.

The existing thermal demands in the area could also be investigated for a potential connection to the developing scheme (if this has not already happened). The additional demands identified for connection through this work which sit outside the regeneration area are Brooklands Primary School and the David Lloyd Leisure Centre to the west of the regeneration area, and Ealdham Primary school to the east.

The load diversity offered by Kidbrooke is conducive to a DE network, with a good mix of residential, sports and leisure, educational and commercial space.

The existing buildings on the site identified in the heat map are predominantly under public ownership, which will be helpful securing long term energy supply contracts which significantly de-risk the overall project.

Potential next steps:

- Engage scheme developer to assess ability for scheme to expand beyond the redevelopment site, including physical and commercial constraints
- Engage scheme developer to determine if connections outside the regeneration area have been incorporated in the implementation of the scheme
- Engage with additional potential connections to determine plant-replacement dates and appetite for connection

Table 1: Existing buildings in the Kidbrooke Village cluster

Name	Ownership	Typology	Fuel Consumption (MWh/year)
Thomas Tallis Secondary School	Local government	Education facilities	1512.1
David Lloyd Leisure Ltd	Private	Sport & Leisure facilities	1320.0*
Ealdham Primary School	Local government	Education facilities	370.9
Meadowside Leisure Centre	Private	Sport & Leisure facilities	298.4
Holy Family RC Primary School	Local government	Education facilities	263.4
Brooklands Primary School	Local government	Education facilities	246.5
Ferrier Neighbourhood Office	Local government	Local government estate	109.4
Wingfield Primary School	Local government	Education facilities	104.7
Total fuel consumption			4,425.5

Table 2: Planned developments in the Kidbrooke Village cluster

Name	Ownership	Typology	Fuel Consumption (MWh/year)
Kidbrooke Village	Unknown	Mixed use	19,794*
Thomas Tallis School (redevelopment)	Local Government	Education facilities	3,142*
Total fuel consumption			22,936

Total annual fuel consumption	27,161 MWh/year
Total estimated heat demand	21,906 MWh/year
Estimated peak heat load	9.7 MW

* Benchmarked demands based on industry standards

6.1.2 Woolwich Arsenal Cluster

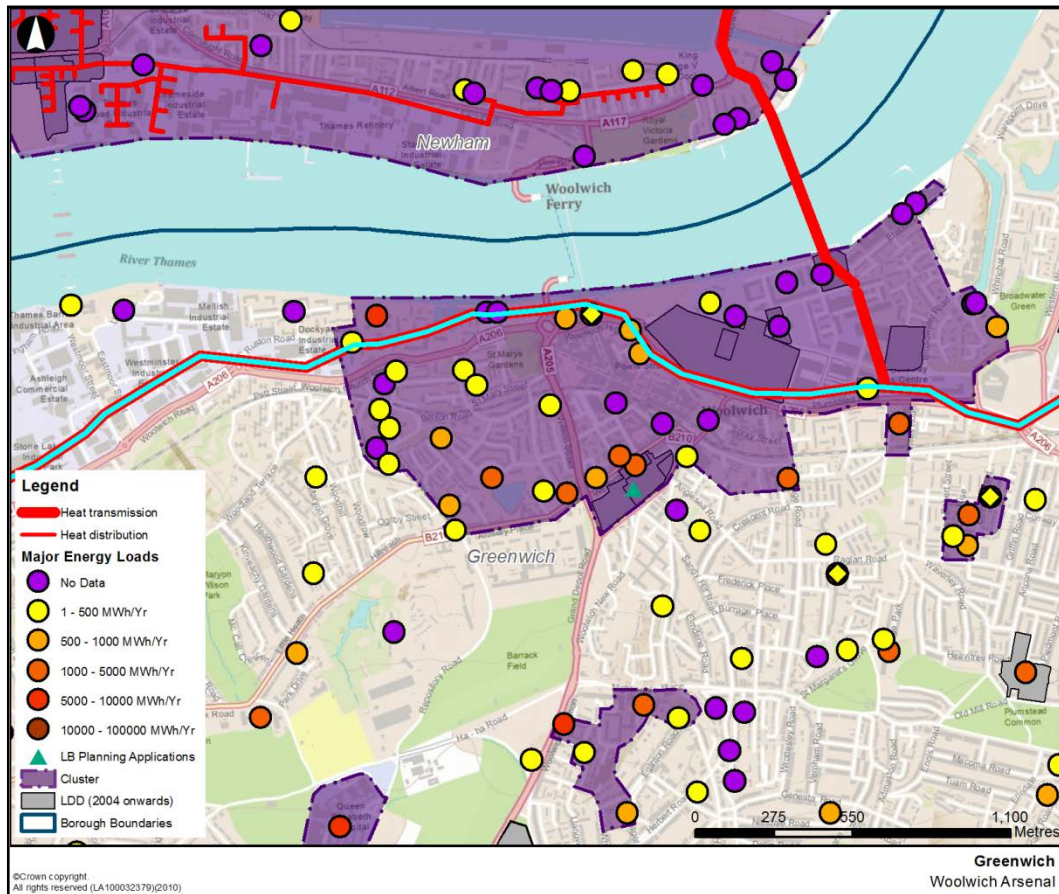


Figure 6: Woolwich Arsenal Road cluster

The Woolwich Arsenal cluster is centred on significant redevelopment in the Plumstead Road area, as identified from the London Development Database. These developments are at varying stages of completion. The Royal Arsenal is a major regeneration project within this cluster. The mixed use development, comprising over 4,000 residential apartments, and over 25,000 square metres of commercial premises including a new Crossrail station, museums, office and hotel opportunities as well as healthcare and educational facilities is due to be completed by 2021. Phase 1 of the development includes a district heating network that will initially serve over 460 apartments as well as nursery unit, Primary Care Trust and commercial units with heating and hot water.

The new developments in the area include the development of new civic offices for the Royal Borough of Greenwich which was completed in 2011. It is part of the wider Love Lane development that will also provide a major new supermarket store and 960 homes.

The cluster is characterised by a diverse range of loads, incorporating residential, commercial and educational space. The area is identified as a potential connection to the London Thames Gateway Heat Network (GLA Vision Map, 2009).

The majority of the existing buildings identified in the cluster are under public ownership, which may facilitate securing long term energy supply agreements for these connections, and reduce the development risk of any potential scheme.

A significant number of the buildings included in the cluster have no associated data; the collection of energy demand data for these would need to be identified if the potential scheme is investigated further.

Within the scheme, there are a number of buildings with the potential to act as anchor loads. These include:

- Woolwich Dockyard Estate
- Waterfront Leisure Centre
- Haven Lodge (Sheltered housing)
- Greenwich Community College
- Hastings House
- Woolwich Town Hall
- Elliston House

These sites all have an existing demand exceeding 1 GWh of heat per annum. These sites are likely to have significant existing installed heat generation capacity. There may be scope to house energy centres on these sites.

Potential next steps:

- Clarify the state of the planned developments in the area and the proposals for district heating and CHP capacity included
- Engage with potential anchor loads to determine plant-replacement dates
- Explore the vicinity for additional public / private connections that have not yet been captured in this analysis.

Table 3: Existing buildings in Woolwich Arsenal cluster

Building name	Typology	Ownership	Fuel consumption (MWh)
Woolwich Dockyard Estate	Private residential	Local government	8029.9
Waterfront Leisure Centre	Sport & Leisure facilities	Local government	2365.5
Firepower - The Royal Artillery Museum	Museums & Art Galleries	Private	1900.0*
Haven Lodge (Sheltered)	Private residential	Local government	1704.5
Greenwich Community College	Education facilities	Other public	1607.0
Hastings House	Private residential	Local government	1499.6
Woolwich Town Hall	Local government estate	Local government	1499.2
Elliston House	Private residential	Local government	1345.5
Sarah Turnbull House (Sheltered)	Private residential	Local government	856.1

Len Clifton House (Sheltered)	Private residential	Local government	756.7
Heronsgate Primary School	Education facilities	Local government	724.0
Riverside House	Education facilities	Local government	722.1
Woolwich Ferry Offices	Local government estate	Other public	700.5
Bill Walden House (Sheltered)	Private residential	Local government	631.9
Fitness First Ltd	Sport & Leisure facilities	Private	618.8*
Cardwell Primary School	Education facilities	Local government	468.2
Samuel Street (Block 1)	Private residential	Local government	353.7*
Frances Street 179-285	Private residential	Local government	353.7*
Frances Street (Block 4)	Private residential	Local government	353.7*
Frances Street	Private residential	Local government	353.7*
Kingsman Street 1-99	Private residential	Local government	303.4*
Mulgrave Primary School	Education facilities	Local government	291.1
St Mary Magdalene CE Primary School	Education facilities	Local government	290.6*
Woolwich Fire Station	Fire stations	Other public	288.5
Greenwich Heritage Centre	Museums & Art Galleries	Local government	259.6
Woolwich Dockyard Day Centre	Local government estate	Local government	220.8
Middlegate House (Greenwich Leisure Ltd)	Sport & Leisure facilities	Private	181.5
Tramshed Theatre	Sport & Leisure facilities	Other public	32.0
Total fuel consumption			29,875

Table 4: New development in the Woolwich Arsenal cluster

Building name	Typology	Ownership	Development stage	Fuel consumption (MWh)
(2900) Argyll Road	Private residential	Private	Complete	1,306.9*
(2899) Arsenal Way	Private residential	Private	Complete	1,258.2*
(100521) Beresford Street	Private residential	Private	To begin this year	1,201.1*
(53279) Tom Cribb Road	Private residential	Private	Unknown	880.7*
(69697) Beresford Street	Mixed use	Unknown	To begin this year	Not available

(96534) Wellington Street	Local government estate	Unknown	Complete	Not available
(77661) Love Lane	Mixed use	Unknown	Staged completion from 2012	Not available
Total fuel consumption			34,522 MWh/year	
Total estimated heat demand			27,618 MWh/year	
Estimated peak heat load			12.3 MW	

* Benchmarked demands based on industry standards

6.1.3 Woolwich Common Cluster



Figure 7: Woolwich Common cluster

The Woolwich Common Estate in the North West corner of the cluster represents a potential anchor load in the Herbert Road area, as it has an annual heat demand of approximately 9 GWh. There may be potential to develop a network with an energy centre located on the Woolwich common estate, though additional non residential loads would be required to give a more favourable load diversity.

The Eglinton Primary school in the south east of the cluster represents a significant thermal demand, with 665 MWh/year. The school is fairly isolated, however, and additional loads may need to be identified to justify a heat main connection from an energy centre in the north or south of the cluster.

The Woolwich Common cluster is just north of the completed redevelopment of the former military academy site, which was converted to 328 residential units. If further work is to be undertaken on this site it should be investigated for potential to connect to a wider energy network, and to house an energy centre.

Potential next steps:

- Investigate the Woolwich Common Estate for potential as an energy centre.
- Explore the vicinity for additional public / private connections that have not yet been captured in this analysis.
- Develop a business case for replacing the existing roof boilers with a basement CHP plant on Woolwich Common Estate

Table 5: Existing buildings in the Woolwich Common cluster

Name	Ownership	Typology	Fuel Consumption (MWh)
Woolwich Common Estate	Local government	Private residential	8783.9
Nightingale Heights	Local government	Private residential	1562.8
Eglinton Primary School	Local government	Education facilities	664.5
Woolwich Common Community Centre	Local government	Other public buildings	319.0
Notre Dame RC Primary School	Local government	Education facilities	194.7
Total fuel demand			11,524.9

Table 6: New buildings in the Woolwich Common cluster

Name	Ownership	Typology	Fuel Consumption (MWh)
Military Academy Site	Unknown	Residential	Not available

Total fuel consumption	11,524 MWh/year
Total estimated heat demand	9,220 MWh/year
Estimated peak heat load	4.1 MW

6.1.4 Greenwich Peninsula cluster

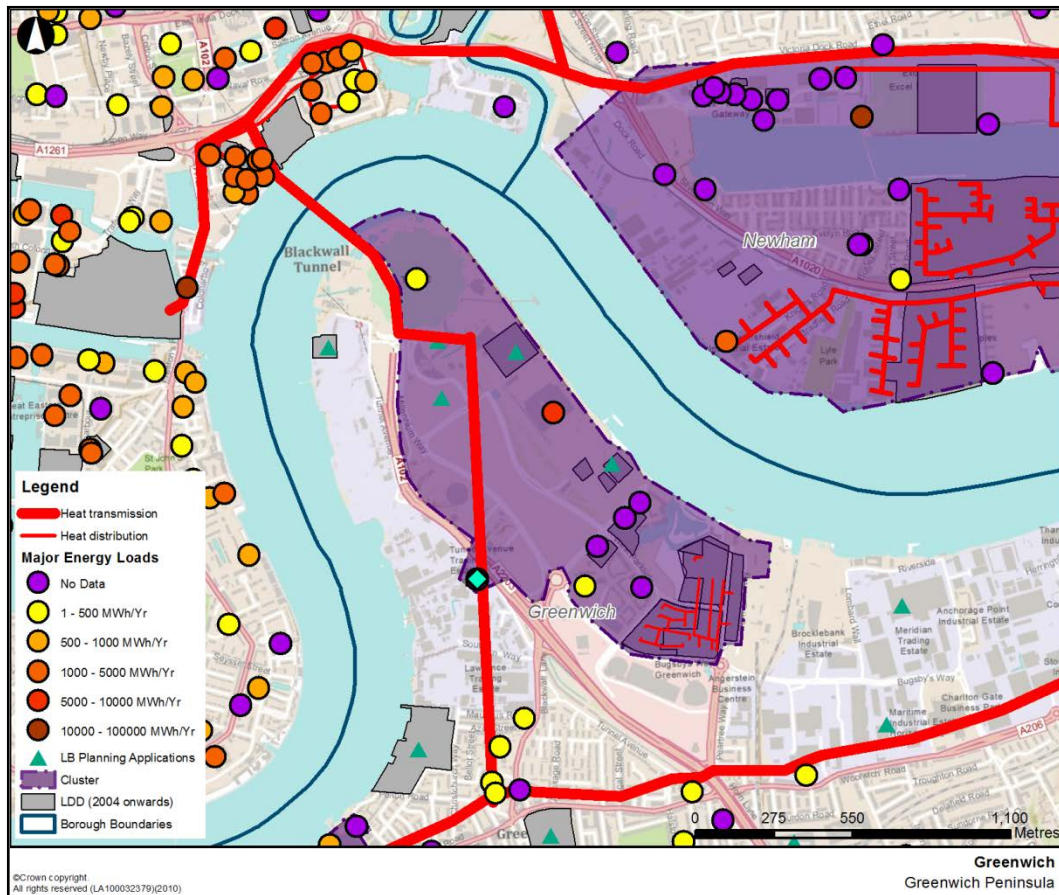


Figure 8: Greenwich Peninsula cluster

The Greenwich Peninsula cluster focuses on the existing district heating network at the Greenwich Millennium Village and the O2 Stadium site and the proposed district heating network for the Greenwich Peninsula Regeneration Limited (GPRL) site. It is bordered by the A102 to the east, and the river Thames to the north and east.

The Greenwich Millennium Village includes an existing heat network supplying this development. There may be potential to extend that network to incorporate the remaining buildings in the cluster.

GPRL is proposing to construct a major DE plant on their site to serve the 10,000 new homes, 340,000 sqm of commercial space, schools, retail, hotel and community uses that will eventually occupy the site. Significant feasibility work has been undertaken in partnership with the HCA and Royal Greenwich ahead of the eventual submission of a planning application.

Significant, mixed use development sites also exist to the south and east of the cluster at Heart of East Greenwich, Lovell's Wharf and Enderby Wharf where planning permission has been secured and development is either underway or to commence shortly

The Brookland Industrial Estate and Meridian Trading Estates lie to the east of the cluster. These sites are not indicated as heat loads on the map, though may present

an opportunity for future connection to the network as either heat consumers or suppliers. These sites should be investigated further.

Potential next steps:

- Engage with GPRL to ascertain progress with its DE network and development of the site as a whole
- Engage with the developers for Heart of East Greenwich, Lovell's Wharf and Enderby Wharf to gain clarity on progress and potential for linking to wider DE network
- Gain further clarity on other new developments in the area, and investigate the possible extent of developer contributions towards the scheme.

Table 7: Existing Buildings in the Greenwich Peninsula cluster

Building Name	Typology	Ownership	Fuel Consumption (MWh)
Amylum UK Limited (Tate and Lyle UK)	Private	Private	542,002.6
David Beckham Academy	Private	Sport & Leisure facilities	7,252.6*
Millennium Primary School	Local government	Education facilities	487.9
Millennium Dome	Private	Private commercial)	107.6
Total fuel demand			549,850.7

Table 8: New Development in the Greenwich Peninsula cluster

Building Name	Typology	Ownership	Fuel Consumption (MWh)
GMV (Phase 1e) Mudlarks Boulevard (completed)	Residential	Unknown	Not available
GMV (Phases 1c & 1d - Union Two) Mudlarks Boulevard (completed)	Mixed use	Unknown	Not available
Phases 3, 4 & 5 Greenwich Millennium Village Greenwich Peninsula, SE10	Mixed use	Private	9,058*
Greenwich Millennium Village Phases 3, 4 & 5/1 West Parkside, SE10	Mixed use	Private	21,146*
Plot M0116 Greenwich Peninsula	Residential	Private	601*
Plot M0114	Residential	Private	840*
Plot 102 Greenwich Peninsula	Residential	Private	929*
Plot N02 06 Greenwich Peninsula	Mixed use	Private	1,938*

Total fuel consumption	593,017 MWh/year
Total estimated heat demand	474,413 MWh/year
Estimated peak heat load	211 MW

* Benchmarked demands based on industry standards

6.1.5 River Heights Cluster

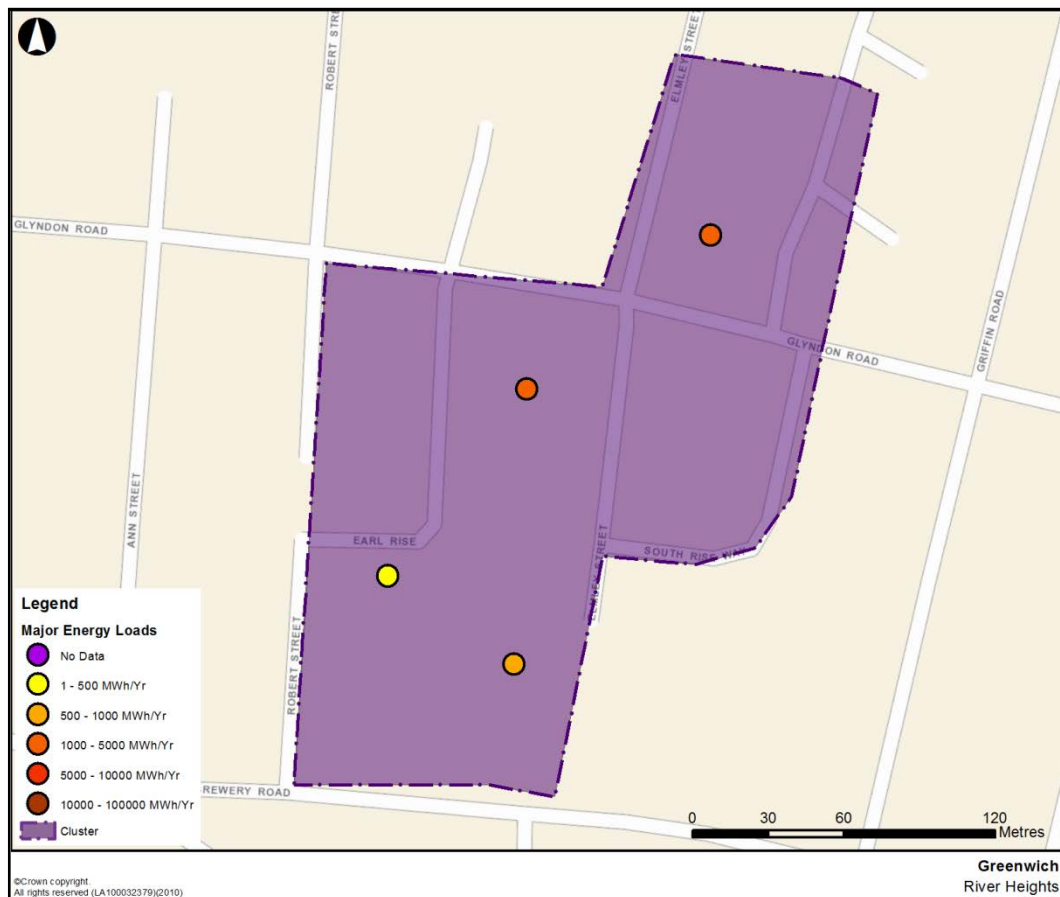


Figure 9: River Heights heat cluster

The River Heights cluster is made up for four potential connections close to Glyndon Road. The buildings in the cluster are the South Rise and Waterside Special primary schools, and the River Heights estate.

The map above shows no significant barriers to the installation of a heat network. The residential blocks and schools are currently served by communal boilers, which may make the implementation of any network simpler by avoiding the need for upgrade works to the building internals.

The load diversity of the combination of educational facilities and residential load may lend itself to the development of a network, though this will depend on the usage of the schools over the summer period. The annual variation in thermal load should be investigated in detail as part of any further feasibility work, as this could significantly impact the annual hours of operation of a combined heat and power unit.

All of the buildings in the cluster are under local government ownership, which should contribute to securing long term energy supply agreements.

Potential next steps:

- Investigate the River Heights Estate for potential as and energy centre
- Assess the plant capacity and replacement schedule at the River Heights Estate and other potential connections
- Explore the vicinity for additional public / private connections that have not yet been captured in this analysis.

Table 9: Existing Buildings in the River Heights cluster

Building Name	Typology	Ownership	Fuel Consumption (MWh)
River Heights	Local government	Private residential	1275
River Heights	Local government	Private residential	1275
South Rise Primary School	Local government	Education facilities	647
Waterside Special Primary School	Local government	Education facilities	215
Total fuel demand			3,411

Total fuel consumption	3,411 MWh/year
Total estimated heat demand	2,729 MWh/year
Estimated peak heat load	1.2 MW

6.1.6 Queen Elizabeth Hospital Cluster



Figure 10: Queen Elizabeth Hospital cluster

The Queen Elizabeth Hospital cluster includes the Queen Elizabeth Hospital site, and two private residential sites to the south: Greenwich Heights and Master Gunner Place. The hospital is likely to act as the anchor load and potential energy centre site, providing energy to the two housing estates. The southernmost housing site (Master Gunner Place), marked on the map as an LDD polygon, was completed in 2008. The boundary of this site is approximately 300 meters from the boundary of the hospital site. The potential network could run along the edge of Hornfair Park or Woolwich Common, which may reduce the overall capital cost of the installation.

The heating systems installed in the residential blocks are not known, these should be assessed to ascertain if there is potential to progress the scheme.

An initial assessment could be made of the economics of installing the interconnecting heat pipe to determine scheme viability.

Potential next steps

- Engage the Queen Elizabeth Hospital to assess their appetite to house an energy centre or connect to a district heating scheme

- Engage the Queen Elizabeth Hospital to assess their existing installed plant, and if there is spare existing capacity that could be used to supply the remaining buildings in the cluster
- Undertake a high level economic assessment to assess scheme viability
- Explore the vicinity for additional public / private connections that have not yet been captured in this analysis.

Table 10: Existing Buildings in the Queen Elizabeth Hospital cluster

Building Name	Typology	Ownership	Fuel Consumption (MWh)
Queen Elizabeth Hospital NHS Trust	NHS	Other public	7,294.0*
Master Gunner Place, Woolwich	Private residential	Unknown	727.0*
Greenwich Heights	Private residential	Private	429.0*
Total fuel consumption			8,450.0

Total fuel consumption	8,450 MWh/year
Total estimated heat demand	6,760 MWh/year
Estimated peak heat load	3.0 MW

* Benchmarked demands based on industry standards

6.1.7 East Greenwich Cluster

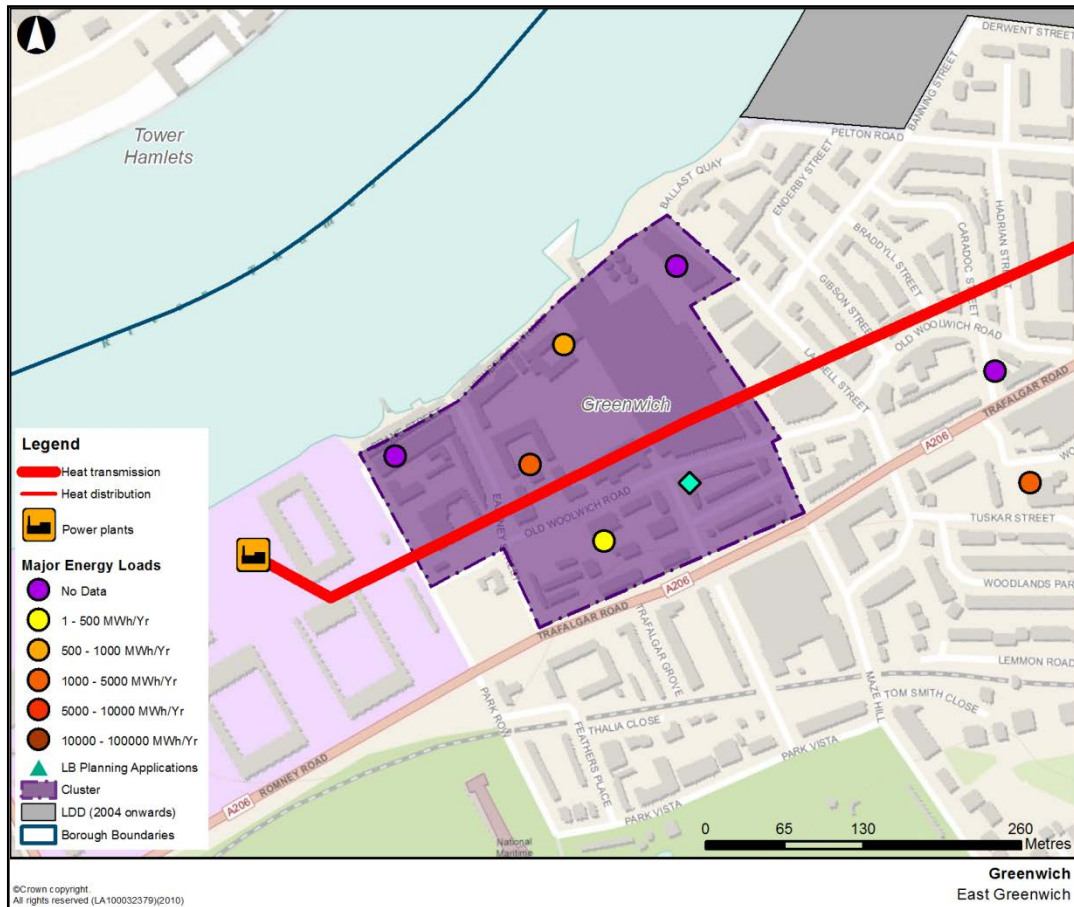


Figure 11 East Greenwich Cluster

It is understood that the East Greenwich Station supplies power to the London Underground, and provides peak lopping as required for the National Grid. The capacity of the existing generation plant is 118 MW electrical.

The ability of the current operating regime of the plant to supply heat to a local district heating network is questionable, as the thermal production is not likely to be aligned with thermal demand. In other words, the power station does not constantly provide electricity – it only operates when electricity is required by London Underground or National Grid to match the peak demand. Therefore, the uncertain and intermittent nature of the current operating pattern makes the power station unsuitable to act as the sole heat supply for a DE network. There may be scope to alter the operating regime of the plant in order to improve the availability of heat for a potential district heating network. This would be dependent on negotiations with London Underground / Transport for London.

If the East Greenwich Station could be converted to CHP, the available heat may be in the region of 118 MW thermal. The loads identified in this cluster, as set out in the table below are estimated to require a capacity of 1.3 MW thermal, meaning instantaneous supply will far exceed demand. Given potential scale of the heat supply, a much larger thermal demand is required. One option may be connection to the Greenwich Peninsula cluster, approximately two kilometres around the

Thames from the power station site. This option would require further investigation to identify its potential.

Potential next steps:

- Engage with London Underground / Transport for London to ascertain their appetite for the power station to act as a strategic heat supply in Greenwich.
- Undertake more detailed assessment work to determine the potential available thermal supply
- Undertake more detailed assessment work to determine the feasibility of connecting the power station to the Greenwich Peninsula network

Building Name	Typology	Ownership	Fuel Consumption (MWh)
Ernest Dence Estate	Private residential	Local government	2568.5
Trinity Hospital	NHS	Other public	713.3*
Meridian Primary School	Education facilities	Local government	270.0
Merchants House	Private residential	Private	Not available
Total fuel consumption			3,551.8

Total fuel consumption	3,552 MWh/year
Total estimated heat demand	2,841 MWh/year
Estimated peak heat load	1.3 MW
Estimated potential heat supply	118 MW

* Benchmarked demands based on industry standards

6.2 Cross-Borough opportunities

The following DE opportunities have been identified that cross the borough boundary.

6.2.1 Greenwich-Lewisham: Lewisham Road

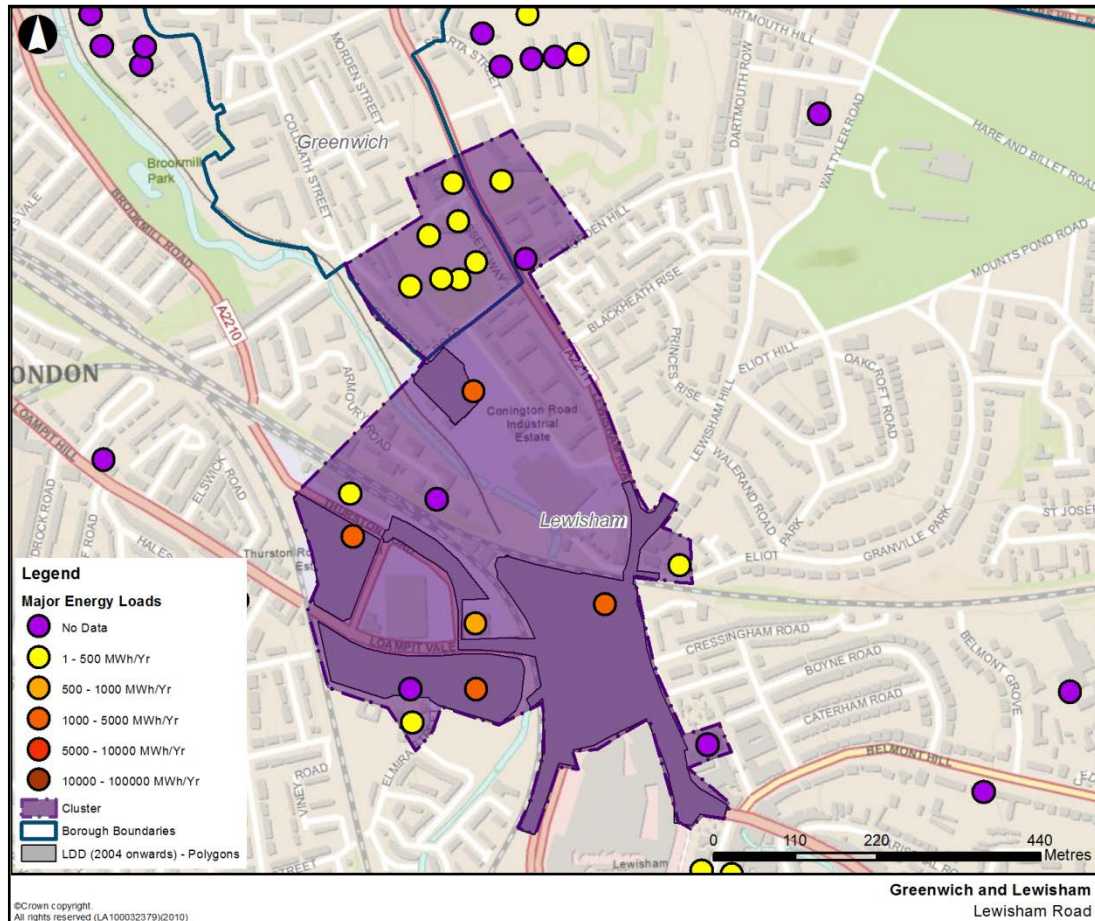


Figure 12: Greenwich-Lewisham: Lewisham Road cluster

Lewisham Town Centre was identified through the heat mapping process in the London borough of Lewisham heat map report³ as a focus area for the development of decentralised energy. There are a number of existing thermal loads across the borough boundary from Lewisham which could be considered for connection should the network in Lewisham Town Centre come forward.

The loads identified include five housing estates and a school, with annual demands ranging from 431 MWh /year (Egremont House) to 211 MWh/year (Warner House). They are clustered close together, in an area approximately 10,000m². The network is likely to be driven by the London Borough of Lewisham, and they would need to be engaged to assess the likelihood of the network coming forward.

³ London Heat map Study for the London Borough of Lewisham, Ramboll (2010)

The housing estates are a combination of electrical heating and individual boilers, which is likely to increase the investment required to connect the blocks to a district heating network. In light of this, and the distance between the regeneration area in Lewisham and the potential loads in Greenwich, the opportunity in this cluster is considered to be limited.

Potential next steps:

- Engage the London Borough of Lewisham to determine the likelihood of the Lewisham Town Centre network coming forward
- Explore the vicinity for additional public / private connections that have not yet been captured in this analysis.

Table 11: Existing Buildings in Greenwich-Lewisham: Lewisham Road cluster

Name	Ownership	Typology	Fuel Consumption (MWh)
Egremont House	Local government	Private residential	431.2
Ellison House	Local government	Private residential	343.1
Morden Mount Primary School	Local government	Education facilities	339.2
Russett Way 1-54	Local government	Private residential	328.8*
Pitmaston House	Local government	Private residential	248.8
Warner House	Local government	Private residential	211.0
Total fuel consumption			1902.0

Total fuel consumption	8,450 MWh/year
Total estimated heat demand	6,760 MWh/year
Estimated peak heat load	3.0 MW

* Benchmarked demands based on industry standards

7 Implementation Plan

The Implementation Plan has been developed jointly by Arup consultants and officers from the Royal Borough of Greenwich. The priorities, constraints and next steps described below remain subject to Member's consideration and approval.

DE Opportunity Area	Priority (Low/Medium/High)	Constraints	Next Steps for delivering DE schemes
Kidbrooke Village Cluster	High	<p>Stage of development. Scope to extend the planned network may be limited if development has progressed too far.</p> <p>The A213 and overland rail track may represent barriers to network development/expansion.</p>	<ul style="list-style-type: none"> Engage scheme developer to assess ability for scheme to expand beyond the redevelopment site, including physical and commercial constraints Engage scheme developer to determine if connections outside the regenerations area have been incorporated in the implementation of the scheme Engage with additional potential connections to determine plant-replacement dates and appetite for connection
Woolwich Arsenal Cluster	Medium	<p>Stage of development. Scope to implement a network may be limited if developments in the area have progressed too far, for example specifying individual heating systems</p> <p>The A206, A205, A2204 and overland rail track all bisect the cluster. The feasibility of crossing these barriers should be investigated.</p>	<ul style="list-style-type: none"> Clarify the state of the planned developments in the area Engage with potential anchor loads to determine plant-replacement dates Keep abreast of any developments of the London Thames Gateway Heat Network Explore the vicinity for additional public / private connections that have not yet been captured in this analysis.
Woolwich Common Cluster	Medium	<p>The limited thermal load in the area may impact potential scheme viability</p> <p>The capacity of the Woolwich Common Estate to house an energy centre</p>	<ul style="list-style-type: none"> Investigate the Woolwich Common Estate for potential as an energy centre. Explore the vicinity for additional public / private connections that have not yet been captured in this analysis. Develop a business case for replacing the existing roof boilers with a basement CHP plant on Woolwich Common Estate

Greenwich Peninsula Cluster	High	As well as phases 1 and 2 of the Millennium Village (phases 3, 4 and 5 totalling a further 1,745 homes are yet to be built) only 229 homes and some of the office space on the GPRL site has been built.	<ul style="list-style-type: none"> • Gain further clarity on the new developments in the area, and investigate the possible extent of developer contributions towards the scheme. • Engage with GPRL to ascertain progress with its DE network and development of the site as a whole • Engage with the developers for Heart of East Greenwich, Lovell's Wharf and Enderby Wharf to gain clarity on progress and potential for linking to wider DE network • Keep abreast of developments in the London Thames Gateway Heat Network.
River Heights Cluster	Medium	The capacity of the River Heights Estate to house an energy centre The overall demand of the cluster impacting the viability of the potential network	<ul style="list-style-type: none"> • Investigate the River Heights Estate for potential as and energy centre • Assess the plant capacity and replacement schedule at the River Heights Estate and other potential connections • Explore the vicinity for additional public / private connections that have not yet been captured in this analysis.
Queen Elizabeth Hospital	Low	The willingness of hospital to engage as anchor load or house energy centre will significantly impact scheme viability.	<ul style="list-style-type: none"> • Engage the Queen Elizabeth Hospital to assess their appetite to house an energy centre or connect to a district heating scheme • Engage the Queen Elizabeth Hospital to assess their existing installed plant, and if there is spare existing capacity that could be used to supply the remaining buildings in the cluster • Undertake a high level economic assessment to assess scheme viability • Explore the vicinity for additional public / private connections that have not yet been captured in this analysis.
East Greenwich Cluster	Low	The current operating regime of the power station The conversion of the power station to CHP The identification of sufficient thermal	<ul style="list-style-type: none"> • Engage with London Underground to ascertain their appetite for the power station to act as a strategic heat supply in Greenwich. This is likely to require a change in operational regime.

		demand to utilise the potential supply	<ul style="list-style-type: none"> • Undertake more detailed assessment work to determine the potential available thermal supply • Undertake more detailed assessment work to determine the feasibility of connecting the power station to the Greenwich Peninsula network
Lewisham Road Cluster	Low	Development of the Lewisham Town Centre network	<ul style="list-style-type: none"> • Engage the London Borough of Lewisham to determine the likelihood of the Lewisham Town Centre network coming forward • Explore the vicinity for additional public / private connections that have not yet been captured in this analysis.

8 Conclusions and Recommendations

Based on the data made available in this heat mapping exercise, it has been found that there are a number of potential heat load clusters that offer opportunities for the implementation of DE and DH schemes in the Royal Borough of Greenwich. These are listed below:

- Kidbrooke Village Cluster
- Greenwich Peninsula Cluster
- Woolwich Arsenal Cluster
- Woolwich Common Cluster
- River Heights Cluster

The first three clusters listed above have a large amount of regeneration planned. Redevelopment of this scale represents a significant opportunity for decentralised energy, offering the potential to integrate bespoke energy centres into the new developments, and design building and site heating systems to optimise the use of district heating and CHP.

Kidbrooke Village and Greenwich Peninsula clusters have the highest priority among all identified clusters due to their good balance of heat demands and current development stage. Woolwich Arsenal Cluster also presents a good opportunity for DE; although the status of the planned developments in the area will need to be investigated further before progressing.

However, it should also be noted that there may be other potential opportunities in the borough that achieve the wider aims of decentralised energy schemes, namely; decarbonisation of the energy supply, reduced fuel poverty and increased security of supply.

To fully understand the potential for wider decentralised energy opportunities is outside the scope of this Heat Map report, which has specifically focused on the development of heat networks within the Royal Borough of Greenwich. A more detailed renewable and low carbon energy resource study would be required to identify and analyse the potential for any such programmes of work within the borough. These other programmes of work could include:

- Implementing other technological interventions such as solar thermal, small scale biomass boilers, ground source heat pumps, air source heat pumps, photovoltaic panels (PV) and appropriately sized wind turbines
- Contributing to the decarbonisation of the national gas and electricity grids, perhaps through energy from waste mechanisms or other renewable resources
- Identifying a suitable addition to any proposed Community Infrastructure Levy (CIL) that would allow the borough to fund carbon reduction infrastructure
- Setting up a local carbon fund collected through the planning process to enable the borough to prioritise carbon reduction programmes

Appendix A

Populated Template and London
Heat Map Heat Load Typologies

A1 Populated template

A1.1 Major Heat Loads

OXS	OYS	Name	Address	Postcode	Ownership	New Development	Typology	Heating supply	Fuel source	Fuel consumption: all assets exc. CHP (MWh/yr)	Fuel consumption: CHP (MWh/yr)	Gross internal floor area (m2)	Number of dwellings	Installed thermal capacity: all assets exc. CHP (MWth)	CHP installed electrical capacity (MWe)	CHP installed thermal capacity (MWth)	CO2 emissions (tCO2/yr)	Year of Construction	Year of data collection	Start date	Completion date	Data Source	Confidentiality of data	Attach file	Borough	Real or estimated data?	Notes
547278	180313	1 RINGSIDE COURT	POPLAR PLACE LONDON	SE288GS	Private	No	Private residential (> 149 units or 9,999 m2)			-	-	-	109	-	-	-	-	-	-	-	-	-	No		Greenwich		
544472	179639	4 TIDESLEA TOWER	EREBUS DRIVE LONDON	SE280GF	Private	No	Private residential (> 149 units or 9,999 m2)			-	-	-	56	-	-	-	-	-	-	-	-	-	No		Greenwich		
539431	177852	49 LEAMINGTON COURT	RESTELL CLOSE LONDON	SE3 7RD	Private	No	Private residential (> 149 units or 9,999 m2)			-	-	-	59	-	-	-	-	-	-	-	-	-	No		Greenwich		
539857	179291	90 METCALFE COURT	JOHN HARRISON WAY LONDON	SE100BZ	Private	No	Private residential (> 149 units or 9,999 m2)			-	-	-	57	-	-	-	-	-	-	-	-	-	No		Greenwich		
546586	179312	Abbey Wood Neighbourhood Office	140 Eynsham Drive	SE2 9PT	Local government	No	Local government estate	Central Boilers	Natural gas	69.34	-	222.00	-	-	-	-	14.25	-	2010	-	-	RBG	No		Greenwich	Estimated	BA 27/1/12
546762	178508	Abbey Wood Nursery School and Children's Centre	Dahlia Road	SE20SX	Local government	No	Education facilities	Central Boilers	Natural gas	126.46	-	585.00	-	-	-	-	26.00	-	2010	-	-	RBG	No		Greenwich	Actual	BA 25/1/12
543872	177863	Acworth House, 1-78	Barnfield Road	SE18 3TW	Local government	No	Private residential (> 149 units or 9,999 m2)	Individual boilers	Natural gas	-	-	-	78	-	-	-	-	-	-	-	-	-	No		Greenwich		BA 10/2/12
539682	175993	Age Exchange Reminiscence Centre	11 Blackheath Village, London	SE3 9LA	Private	No	Museums & Art Galleries			-	-	-	-	-	-	-	-	-	-	-	-	-	No		Greenwich		
545057	174222	Alderwood Primary School and Children's Centre	Rainham Close	SE9 2JH	Local government	No	Education facilities	Central Boilers	Natural gas	745.51	-	3,493.00	-	-	-	-	153.26	-	2010	-	-	RBG	No		Greenwich	Actual	BA 25/1/12
546803	178377	Alexander McLeod Primary School	Fuchsia Street	SE2 0QS	Local government	No	Education facilities	Central Boilers	Natural gas	381.48	-	3,235.00	-	-	-	-	78.42	-	2010	-	-	RBG	No		Greenwich	Actual	BA 25/1/12
539343	179076	Amylum UK Limited	Tate & Lyle UK Limited, Tunnel Refineries, Tunnel Bank House, Tunnel Avenue, Greenwich, London	SE100PA	Private	No	Private commercial (> 9,999 m2)		Oil	542,002.63	-	-	-	61.87	-	-	115,930.00	-	2008	-	-	Boiler Sites	No		Greenwich		

OXS	OYS	Name	Address	Postcode	Ownership	New Development	Typology	Heating supply	Fuel source	Fuel consumption: all assets exc. CHP (MWh/yr)	Fuel consumption: CHP (MWh/yr)	Gross internal floor area (m2)	Number of dwellings	Installed thermal capacity: all assets exc. CHP (MWth)	CHP installed electrical capacity (MWe)	CHP installed thermal capacity (MWth)	CO2 emissions (tCO2/yr)	Year of Construction	Year of data collection	Start date	Completion date	Data Source	Confidentiality of data	Attach file	Borough	Real or estimated data?	Notes	
539343	179076	Amylum UK Ltd (Tunnel Refineries)		SE100PA	Private	No	Private commercial (> 9,999 m2)			-	-	-	-	-	-	-	-	-	-	-	-	LEP CH DB	No		Greenwich			
540417	174732	Ann Stroud Court (Sheltered)	80 Eltham Road	SE12 8UA	Local government	No	Private residential (> 149 units or 9,999 m2)	Central Boilers	Natural gas	293.95	-	-	-	-	-	-	-	-	-	2010	-	-	RBG	No		Greenwich		ADDED 10/2/12
544486	174007	ARAGON COURT	FLAT 1 257 AVERY HILL ROAD LONDON	SE9 2EU	Private	No	Private residential (> 149 units or 9,999 m2)			-	-	-	57	-	-	-	-	-	-	-	-	-	No		Greenwich			
538018	176316	Aster House	Lewisham Road	SE13 7NF	Local government	No	Private residential (> 149 units or 9,999 m2)	Electric heating	Electricity	7.99	-	-	6	-	-	-	-	-	-	2010	-	-	RBG	No		Greenwich	Estimated	ADDED 1/2/12
544812	174112	Avery Hill Youth Club	Anstridge Road	SE9 2LL	Local government	No	Sport & Leisure facilities	Central Boilers	Natural gas	67.26	-	415.00	-	-	-	-	13.83	-	2010	-	-	RBG	No		Greenwich	Actual	BA 25/1/12	
544379	178075	Azile Everitt House	22 Blendon Terrace	SE18 9SS	Local government	No	Private residential (> 149 units or 9,999 m2)	Central Boilers	Natural gas	1,592.18	-	-	74	-	-	-	-	-	-	2010	-	-	RBG	No		Greenwich	Actual	BA 3/2/12
546020	178549	Bannockburn Primary School - Church Manorway	Church Manorway	SE2 0HY	Local government	No	Education facilities	Central Boilers	Natural gas	645.47	"-"	2,776.00	-	-	-	-	132.70	-	2010	-	-	RBG	No		Greenwich	Actual	BA 27/1/12	
545529	178545	Bannockburn Primary School - Plumstead High Street	Plumstead High Street	SE18 1HE	Local government	No	Education facilities	Central Boilers	Natural gas	247.27	-	2,610.00	-	-	-	-	50.83	-	2010	-	-	RBG	No		Greenwich	Actual	BA 25/1/12	
541836	178003	Beacham Close (Sheltered)	Guild Road	SE7 8JA	Local government	No	Private residential (> 149 units or 9,999 m2)	Central Boilers	Natural gas	596.86	-	-	-	-	-	-	-	-	-	2010	-	-	RBG	No		Greenwich		ADDED 10/2/12
546702	180773	BEVERIDGE COURT	FLAT 201 SAUNDERS WAY LONDON	SE288DZ	Private	No	Private residential (> 149 units or 9,999 m2)			-	-	-	80	-	-	-	-	-	-	-	-	-	No		Greenwich			
543354	178681	Bill Walden House (Sheltered)	70 Wellington Street	SE18 6PY	Local government	No	Private residential (> 149 units or 9,999 m2)	Central Boilers	Natural gas	631.86	-	-	-	-	-	-	-	-	-	2010	-	-	RBG	No		Greenwich		ADDED 10/2/12
546424	179733	Birchmere Depot	Eastern Way	SE28 8BF	Local government	No	Local government estate	Central Boilers	Natural gas	971.70	-	6,146.00	-	-	-	-	199.76	-	2010	-	-	RBG	No		Greenwich	Actual	ADDED 1/2/12	
547128	180940	Bishop John Robinson CE Primary School (VA)	Hoveton Road	SE28 8LW	Local government	No	Education facilities	Central Boilers	Natural gas	133.60	-	1,032.00	-	-	-	-	27.47	-	2010	-	-	RBG	No		Greenwich	Actual	BA 27/1/12	

OXS	OYS	Name	Address	Postcode	Ownership	New Development	Typology	Heating supply	Fuel source	Fuel consumption: all assets exc. CHP (MWh/yr)	Fuel consumption: CHP (MWh/yr)	Gross internal floor area (m2)	Number of dwellings	Installed thermal capacity: all assets exc. CHP (MWth)	CHP installed electrical capacity (MWe)	CHP installed thermal capacity (MWth)	CO2 emissions (tCO2/yr)	Year of Construction	Year of data collection	Start date	Completion date	Data Source	Confidentiality of data	Attach file	Borough	Real or estimated data?	Notes
540064	177357	BLACKHEATH HIGH SCHOOL GPDST	BLACKHEATH HIGH SCHOOL GPDST	SE3 7AG	Private	No	Education facilities			-	-	-	-	-	-	-	-	-	-	-	-	-	No		Greenwich		
543748	178882	Blackheath Leisure Carousel Ltd	Denning House 2a-2b, Woolwich New Road, London	SE18 6HA	Private	No	Sport & Leisure facilities			-	-	-	-	-	-	-	-	-	-	-	-	-	No		Greenwich		Amusement Arcade (not swimming pool, unlikely to be an anchor load)
538239	177332	Borough Hall	Royal Hill	SE10 8RE	Local government	No	Sport & Leisure facilities	Central Boilers	Natural gas	2,300.40	-	4,468.00	-	-	-	-	472.92	-	2010	-	-	RBG	No		Greenwich	Actual	ADDED 1/2/12
547069	179278	Boxgrove Primary School	Boxgrove Road	SE2 9JP	Local government	No	Education facilities	Central Boilers	Natural gas	272.41	-	2,085.00	-	-	-	-	56.00	-	2010	-	-	RBG	No		Greenwich	Actual	BA 27/1/12
543586	178233	Brookhill Children's Centre	130 Brookhill Road	SE18 6UZ	Local government	No	Education facilities	Central Boilers	Natural gas	386.89	-	900.00	-	-	-	-	79.54	-	2010	-	-	RBG	No		Greenwich	Estimated	ADDED 1/2/12
540311	175836	Brooklands Primary School	Medebourne Close	SE3 9AB	Local government	No	Education facilities	Central Boilers	Natural gas	246.52	-	1,446.00	-	-	-	-	50.68	-	2010	-	-	RBG	No		Greenwich	Actual	BA 27/1/12
543995	179210	BUILDING 22	FLAT 2 CADOGAN ROAD LONDON	SE186YL	Private	No	Private residential (> 149 units or 9,999 m2)			-	-	-	310	-	-	-	-	-	-	-	-	-	No		Greenwich		
544021	179363	BUILDING 47	FLAT 1 MARLBOROUGH ROAD LONDON	SE186RU	Private	No	Private residential (> 149 units or 9,999 m2)			-	-	-	50	-	-	-	-	-	-	-	-	-	No		Greenwich		
544145	179390	BUILDING 50	APARTMENT 1 ARGYLL ROAD LONDON	SE186PG	Private	No	Private residential (> 149 units or 9,999 m2)			-	-	-	96	-	-	-	-	-	-	-	-	-	No		Greenwich		
544145	179390	BUILDING 50	APARTMENT 140 ARGYLL ROAD LONDON	SE186PJ	Private	No	Private residential (> 149 units or 9,999 m2)			-	-	-	97	-	-	-	-	-	-	-	-	-	No		Greenwich		
544145	179390	BUILDING 50	APARTMENT 228 ARGYLL ROAD LONDON	SE186PP	Private	No	Private residential (> 149 units or 9,999 m2)			-	-	-	95	-	-	-	-	-	-	-	-	-	No		Greenwich		
542635	178854	Cardwell Primary School	Frances Street	SE18 5LP	Local government	No	Education facilities	Central Boilers	Natural gas	468.19	-	2,102.00	-	-	-	-	96.25	-	2010	-	-	RBG	No		Greenwich	Actual	BA 27/1/12
537289	177940	Charlotte Turner Centre	Benbow Street	SE8 8HD	Local government	No	Education facilities	Central Boilers	Natural gas	359.19	-	2,226.00	-	-	-	-	73.84	-	2010	-	-	RBG	No		Greenwich	Actual	BA 27/1/12

OXS	OYS	Name	Address	Postcode	Ownership	New Development	Typology	Heating supply	Fuel source	Fuel consumption: all assets exc. CHP (MWh/yr)	Fuel consumption: CHP (MWh/yr)	Gross internal floor area (m2)	Number of dwellings	Installed thermal capacity: all assets exc. CHP (MWth)	CHP installed electrical capacity (MWe)	CHP installed thermal capacity (MWth)	CO2 emissions (tCO2/yr)	Year of Construction	Year of data collection	Start date	Completion date	Data Source	Confidentiality of data	Attach file	Borough	Real or estimated data?	Notes
541646	177852	Charlton Assembly Rooms	The Village	SE7 8UG	Local government	No	Other public buildings	Central Boilers	Natural gas	150.99	-	341.00	-	-	-	-	31.04	-	2010	-	-	RBG	No		Greenwich	Actual	BA 27/1/12
541542	177374	Charlton Manor Primary School	Indus Road	SE7 7EF	Local government	No	Education facilities	Central Boilers	Natural gas	433.61	-	2,513.00	-	-	-	-	89.14	-	2010	-	-	RBG	No		Greenwich	Actual	BA 27/1/12
541441	178380	Charlton Millennium Fitness Centre	The Valley, Floyd Road, London	SE7 8BL	Private	No	Sport & Leisure facilities			-	-	-	-	-	-	-	-	-	-	-	-	-	No		Greenwich		
541958	177137	Charlton Park Lido	Shooters Hill Road	SE18 4LX	Local government	No	Sport & Leisure facilities	Central Boilers	Natural gas	27.02	-	-	-	5.00	-	-	-	-	2008	-	-	RBG	No		Greenwich	Actual	BA 1/2/12
541683.37	176076.05	Charlton Pk Rugby Club	Broad Walk, London	SE3 8NB	Private	No	Sport & Leisure facilities			-	-	-	-	-	-	-	-	-	-	-	-	-	No		Greenwich		
542184	177844	Charlton Special Secondary School	Charlton Park Road	SE7 8HX	Local government	No	Education facilities	Central Boilers	Natural gas	1,089.56	-	3,998.00	-	-	-	-	223.99	-	2010	-	-	RBG	No		Greenwich	Actual	BA 27/1/12
541237	177231	Cherry Orchard Primary School	Rectory Field Crescent	SE7 7DG	Local government	No	Education facilities	Central Boilers	Natural gas	331.77	-	1,393.00	-	-	-	-	68.20	-	2010	-	-	RBG	No		Greenwich	Actual	BA 27/1/12
539423	178491	Christ Church CE Primary School - Blackwall Lane (VA)	45 Commerell Street	SE10 0DZ	Local government	No	Education facilities	Central Boilers	Natural gas	164.33	-	1,429.00	-	-	-	-	33.78	-	2010	-	-	RBG	No		Greenwich	Estimated	BA 27/1/12
543213	176561	Christ Church CE Primary School - Shooters Hill (VA)	Shooters Hill	SE18 3RS	Local government	No	Education facilities	Central Boilers	Natural gas	75.09	-	584.00	-	-	-	-	-	-	2010	-	-	RBG	No		Greenwich	Actual	BA 27/1/12
544197	178345	Claymill House	50 Raglan Road	SE18 7HX	Local government	No	Private residential (> 149 units or 9,999 m2)	Central Boilers	Natural gas	1,586.80	-	-	91	-	-	-	-	-	2010	-	-	RBG	No		Greenwich	Actual	BA 3/2/12
543107	172729	Coldharbour Sports Centre	Chapel Farm Road	SE9 3LX	Local government	No	Sport & Leisure facilities	Central Boilers	Natural gas	183.93	-	1,339.00	-	-	-	-	34.02	-	2008	-	-	RBG	No		Greenwich	Actual	BA 1/2/12
540420	174206	Colfes Leisure Centre	Horn Park Lane, London	SE12 8AW	Private	No	Sport & Leisure facilities			-	-	-	-	-	-	-	-	-	-	-	-	-	No		Greenwich		
540433	174262	COLFES SCHOOL	COLFES SCHOOL	SE128AW	Private	No	Education facilities			-	-	-	-	-	-	-	-	-	-	-	-	-	No		Greenwich		
538177	177836	Coltman House	Welland Street	SE10 9DW	Local government	No	Private residential (> 149 units or 9,999 m2)	Individual boilers	Natural gas	-	-	-	70	-	-	-	-	-	-	-	-	-	No		Greenwich		BA 3/2/12
545124	178544	Conway Primary School	Galloson Road	SE18 1QY	Local government	No	Education facilities	Central Boilers	Natural gas	334.32	-	3,191.00	-	-	-	-	-	-	2010	-	-	RBG	No		Greenwich	Actual	BA 27/1/12
543710	177584	Cooper Court (Sheltered)	53 Herbert Road	SE18 3QE	Local government	No	Private residential (> 149 units or 9,999 m2)	Central Boilers	Natural gas	482.80	-	-	53	-	-	-	-	-	2010	-	-	RBG	No		Greenwich	Actual	BA 3/2/12

OXS	OYS	Name	Address	Postcode	Ownership	New Development	Typology	Heating supply	Fuel source	Fuel consumption: all assets exc. CHP (MWh/yr)	Fuel consumption: CHP (MWh/yr)	Gross internal floor area (m2)	Number of dwellings	Installed thermal capacity: all assets exc. CHP (MWth)	CHP installed electrical capacity (MWe)	CHP installed thermal capacity (MWth)	CO2 emissions (tCO2/yr)	Year of Construction	Year of data collection	Start date	Completion date	Data Source	Confidentiality of data	Attach file	Borough	Real or estimated data?	Notes
541883	176435	Corelli College	Correlli Road	SE3 8EP	Local government	No	Education facilities	Central Boilers	Natural gas	2,643.00	-	15,580.00	-	-	-	-	543.35	-	2010	-	-	RBG	No		Greenwich	Actual	BA 27/1/12
537654	177630	Creekside Village West	Creek Road and Copperas Street West	SE10	Private	Yes	Private residential (> 149 units or 9,999 m2)			-	-	9,548.00	371	-	-	-	-	-	2012	-	-	RBG	No		Greenwich		UPDATE D 22/2/12
544327	174755	Crown Woods Secondary School	Riefield Road	SE9 2QN	Local government	No	Education facilities	Central Boilers	Natural gas	2,139.45	-	19,231.00	-	-	-	-	439.83	-	2010	-	-	RBG	No		Greenwich	Actual	BA 27/1/12
538354	177605	Cutty Sark Enterprises Ltd	2 Greenwich Church Street, London	SE10 9BG	Private	No	Museums & Art Galleries			-	-	-	-	-	-	-	-	-	-	-	-	-	No		Greenwich		
539607	179658	David Beckham Academy	East Parkside, London	SE10 0JF	Private	No	Sport & Leisure facilities	0	0	7,252.58	-	-	-	-	-	-	-	-	2012	-	-	Benchmark	No		Greenwich	Estimated	0
540807	175227	David Lloyd Leisure Ltd	Weigall Road, London	SE12 8HF	Private	No	Sport & Leisure facilities	0	0	1,320.00	-	-	-	-	-	-	-	-	2012	-	-	Benchmark	No		Greenwich	Estimated	0
546666	179551	De Lucy Primary School	Cookhill Road	SE2 9PD	Local government	No	Education facilities	Central Boilers	Natural gas	79.65	-	2,554.00	-	-	-	-	16.38	-	2010	-	-	RBG	No		Greenwich	Actual	BA 27/1/12
547003	178858	De Lucy Street Social Services	5 De Lucy St	SE2 9ER	Local government	No	Private residential (> 149 units or 9,999 m2)	Central Boilers	Natural gas	42.28	-	161.00	-	-	-	-	-	-	2010	-	-	RBG	No		Greenwich	Estimated	BA 27/1/12
543353	175720	Deansfield Primary School	Dairsie Road	SE9 1XP	Local government	No	Education facilities	Central Boilers	Natural gas	550.16	-	2,787.00	-	-	-	-	113.10	-	2010	-	-	RBG	No		Greenwich	Actual	BA 27/1/12
545536	180070	Discovery Primary School	West Thamesmead	SE28 0JN	Local government	No	Education facilities	Central Boilers	Natural gas	629.64	-	3,179.00	-	-	-	-	129.44	-	2010	-	-	RBG	No		Greenwich	Actual	BA 28/1/12
539492	178340	Dyson House	Blackwall Lane	SE10 0RD	Local government	No	Private residential (> 149 units or 9,999 m2)	Individual boilers	Natural gas	-	-	-	72	-	-	-	-	-	-	-	-	-	No		Greenwich		BA 3/2/12
541504	175104	Ealdham Primary School	Ealdham Square	SE9 6BP	Local government	No	Education facilities	Central Boilers	Natural gas	370.91	-	2,562.00	-	-	-	-	76.25	-	2010	-	-	RBG	No		Greenwich	Actual	BA 27/1/12
540490	178392	EAST GREENWICH FIRE STATION	235 WOOLWICH ROAD	SE7 7RF	Other public	No	Fire stations	Individual boilers	Natural gas	260.05	-	1,131.00	-	0.22	-	-	-	1985	2009	-	-	Meters	No		Greenwich		
540094	178334	East Greenwich Library	203-207 Woolwich Road	SE10 0RL	Local government	No	Other public buildings	Central Boilers	Natural gas	237.19	-	365.00	-	-	-	-	48.76	-	2010	-	-	RBG	No		Greenwich	Actual	BA 27/1/12
543773	177877	Edge Hill 38-156	38-156 Edge Hill	SE18 3TQ	Local government	No	Private residential (> 149 units or 9,999 m2)	Individual boilers	Natural gas	-	-	-	60	-	-	-	-	-	2012	-	-	-	No		Greenwich		BA 3/2/12
543464	177512	Eglinton Primary School	Padget Rise	SE18 3PY	Local government	No	Education facilities	Central Boilers	Natural gas	664.54	-	3,396.00	-	-	-	-	136.62	-	2010	-	-	RBG	No		Greenwich	Actual	BA 27/1/12
537993	176317	Egremont House	Russett Way	SE13 7NE	Local	No	Private	Electric	Electricity	431.23	-	-	50	-	-	-	-	-	2012	-	-	Benchmark	No		Greenwich	Estimated	BA 3/2/12

OXS	OYS	Name	Address	Postcode	Ownership	New Development	Typology	Heating supply	Fuel source	Fuel consumption: all assets exc. CHP (MWh/yr)	Fuel consumption: CHP (MWh/yr)	Gross internal floor area (m2)	Number of dwellings	Installed thermal capacity: all assets exc. CHP (MWth)	CHP installed electrical capacity (MWe)	CHP installed thermal capacity (MWth)	CO2 emissions (tCO2/yr)	Year of Construction	Year of data collection	Start date	Completion date	Data Source	Confidentiality of data	Attach file	Borough	Real or estimated data?	Notes	
					government		residential (> 149 units or 9,999 m2)	heating														k						
541280	177791	Elliscombe Road Social Services	99 Elliscombe Road	SE7 8DL	Local government	No	Private residential (> 149 units or 9,999 m2)	Central Boilers	Natural gas	38.04	-	-	-	-	-	-	-	-	-	2010	-	-	RBG	No		Greenwich	Estimated	BA 27/1/12
538016	176395	Ellison House	Lewisham Road	SE13 7NB	Local government	No	Private residential (> 149 units or 9,999 m2)	Electric heating	Electricity	343.14	-	-	50	-	-	-	-	-	-	2012	-	-	Benchmark k	No		Greenwich	Estimated	BA 3/2/12
543255	178627	Elliston House	Wellington Street	SE18 6QF	Local government	No	Private residential (> 149 units or 9,999 m2)	Central Boilers	Natural gas	1,345.50	-	-	90	-	-	-	-	-	-	2010	-	-	RBG	No		Greenwich	Actual	BA 3/2/12
542989	174524	Eltham CE Primary School (VA)	Roper Street	SE9 1TR	Local government	No	Education facilities	Central Boilers	Natural gas	242.60	-	1,278.00	-	-	-	-	49.87	-	2010	-	-	RBG	No		Greenwich	Actual	BA 27/1/12	
543081	174513	Eltham Centre	2 Archery Road	SE9 1HA	Local government	Yes	Sport & Leisure facilities	Assets including CHP	Natural gas	3,795.43	-	6,583.00	-	-	-	-	780.26	-	2010	-	-	RBG	No		Greenwich	Actual	BA 27/1/12	
543208	174425	ELTHAM FIRE STATION	226 ELTHAM HIGH STREET	SE9 1BA	Other public	No	Fire stations	Individual boilers	Natural gas	192.66	-	653.00	-	0.16	-	-	-	1904	2009	-	-	Meters	No		Greenwich			
541770	174385	Eltham Foundation Secondary School	Middle Park Avenue	SE9 5EQ	Local government	No	Education facilities	Central Boilers	Natural gas	3,567.02	-	17,945.00	-	-	-	-	733.31	-	2010	-	-	RBG	No		Greenwich	Actual	BA 27/1/12	
542217	174422	Eltham Hill Technology College	Eltham Hill	SE9 5EE	Local government	No	Education facilities	Central Boilers	Natural gas	1,532.20	-	7,708.00	-	-	-	-	314.99	-	2010	-	-	RBG	No		Greenwich	Actual	BA 27/1/12	
542730	174532	ELTHAM POLICE STATION, METROPOLITAN POLICE	WELL HALL ROAD, LONDON	SE9 6SF	Other public	No	Police stations			-	-	-	-	-	-	-	-	-	-	-	-	-	No		Greenwich			
540751	174643	Eltham Road 112 (Sheltered)	112 Eltham Road	SE12 8UL	Local government	No	Private residential (> 149 units or 9,999 m2)	Central Boilers	Natural gas	619.46	-	-	-	-	-	-	-	-	-	2010	-	-	RBG	No		Greenwich		ADDED 10/2/12
541521	179282	ENVIRONMENT AGENCY	THAMES BARRIER	SE78LX	Other public	No	Central government estate		Oil	279.63	-	-	-	0.08	-	-	81.70	-	1997	-	-	Boiler Sites	No		Greenwich			
538800	178050	Ernest Dence Estate	Eastney Street	SE10 9NU	Local government	No	Private residential (> 149 units or 9,999 m2)	Central Boilers	Natural gas	2,568.49	-	-	55	-	-	-	-	-	-	2010	-	-	RBG	No		Greenwich	Actual	BA 3/2/12
539917	179047	FARNSWORTH COURT	FLAT 71 WEST PARKSIDE LONDON	SE100RU	Private	No	Private residential (> 149 units or			-	-	-	50	-	-	-	-	-	-	-	-	-	No		Greenwich			

OXS	OYS	Name	Address	Postcode	Ownership	New Development	Typology	Heating supply	Fuel source	Fuel consumption: all assets exc. CHP (MWh/yr)	Fuel consumption: CHP (MWh/yr)	Gross internal floor area (m2)	Number of dwellings	Installed thermal capacity: all assets exc. CHP (MWth)	CHP installed electrical capacity (MWe)	CHP installed thermal capacity (MWth)	CO2 emissions (tCO2/yr)	Year of Construction	Year of data collection	Start date	Completion date	Data Source	Confidentiality of data	Attach file	Borough	Real or estimated data?	Notes
							9,999 m2)																				
543840	179245	Firepower - The Royal Artillery Museum	Royal Arsenal Woolwich, London	SE18 6ST	Private	No	Museums & Art Galleries			1,900.00	-	-	-	-	-	-	-	-	2012	-	-	Benchmark	No		Greenwich	Estimated	0
543508	179116	Fitness First Ltd	1, Macbean Street, London	SE18 6LW	Private	No	Sport & Leisure facilities			618.75	-	-	-	-	-	-	-	-	2012	-	-	Benchmark	No		Greenwich	Estimated	0
538404	177559	Former John Humphries House And Land At	Stockwell Street	SE10 9JN	Private	Yes	Private commercial (> 9,999 m2)			-	-	16,237.00	-	-	-	-	-	-	2012	40700	-	RBG	No		Greenwich		UPDATED 22/2/12
540841	178110	Fossdene Primary School	Victoria Way	SE7 7NQ	Local government	No	Education facilities	Central Boilers	Natural gas	380.47	-	3,391.00	-	-	-	-	78.22	-	2010	-	-	RBG	No		Greenwich	Actual	BA 27/1/12
544157	178448	Foxfield Primary School	55 Sandbach Place	SE18 7EX	Local government	No	Education facilities	Central Boilers	Natural gas	331.09	-	2,070.00	-	-	-	-	68.07	-	2010	-	-	RBG	No		Greenwich	Actual	BA 27/1/12
542617	179008	Frances Street	Frances Street	SE18 5JU	Local government	No	Private residential (> 149 units or 9,999 m2)	Individual boilers	Natural gas	-	-	-	54	-	-	-	-	-	-	-	-	-	No		Greenwich		BA 3/2/12
542863	178497	Frances Street	Frances Street	SE18 5LB	Private	No	Private residential (> 149 units or 9,999 m2)	Individual boilers	Natural gas	353.72	-	-	56	-	-	-	-	-	2012	-	-	Benchmark	No		Greenwich	Estimated	0
542590	178786	Frances Street (Block 2)	Frances Street	SE18 5LB	Local government	No	Private residential (> 149 units or 9,999 m2)	Individual boilers	Natural gas	-	-	-	57	-	-	-	-	-	2012	-	-	-	No		Greenwich		BA 3/2/12
542600	178920	Frances Street (Block 4)	Frances Street	SE18 5JZ	Local government	No	Private residential (> 149 units or 9,999 m2)	Individual boilers	Natural gas	353.72	-	-	57	-	-	-	-	-	2012	-	-	Benchmark	No		Greenwich	Estimated	BA 3/2/12
542656	179053	Frances Street 179-285	179-285 Frances Street	SE18 5LA	Local government	No	Private residential (> 149 units or 9,999 m2)	Individual boilers	Natural gas	353.72	-	-	56	-	-	-	-	-	2012	-	-	Benchmark	No		Greenwich	Estimated	BA 3/2/12
541450	177894	Fred Styles House (Sheltered)	20 Fletching Road	SE7 8UJ	Local government	No	Private residential (> 149 units or 9,999 m2)	Central Boilers	Natural gas	1,261.09	-	-	-	-	-	-	-	-	2010	-	-	RBG	No		Greenwich		ADDED 10/2/12
545952	178170	Galena House	Grosmont Road	SE18 1LH	Local government	No	Private residential (> 149 units or 9,999 m2)	Electric heating	Electricity	656.50	-	-	43	-	-	-	-	-	2010	-	-	RBG	No		Greenwich	Estimated	ADDED 1/2/12
545821	178268	Gallions Mount Primary School	Purrett Road	SE18 1JR	Local government	No	Education facilities	Central Boilers	Natural gas	430.31	-	2,667.00	-	-	-	-	88.46	-	2010	-	-	RBG	No		Greenwich	Actual	BA 27/1/12

OXS	OYS	Name	Address	Postcode	Ownership	New Development	Typology	Heating supply	Fuel source	Fuel consumption: all assets exc. CHP (MWh/yr)	Fuel consumption: CHP (MWh/yr)	Gross internal floor area (m2)	Number of dwellings	Installed thermal capacity: all assets exc. CHP (MWth)	CHP installed electrical capacity (MWe)	CHP installed thermal capacity (MWth)	CO2 emissions (tCO2/yr)	Year of Construction	Year of data collection	Start date	Completion date	Data Source	Confidentiality of data	Attach file	Borough	Real or estimated data?	Notes	
542959	175607	Garnett Close (Sheltered)	Grangehill Road	SE9 1SU	Local government	No	Private residential (> 149 units or 9,999 m2)	Central Boilers	Natural gas	827.55	-	-	59	-	-	-	-	-	-	2010	-	-	RBG	No		Greenwich	Actual	BA 29/1/12
544359	178117	George Akass House (Sheltered)	1-4 Vicarage Park	SE18 7SY	Local government	No	Private residential (> 149 units or 9,999 m2)	Central Boilers	Natural gas	302.21	-	-	-	-	-	-	-	-	-	2010	-	-	RBG	No		Greenwich		ADDED 10/2/12
537333	177715	Gilbert House	McMillan Street	SE8 3DL	Local government	No	Private residential (> 149 units or 9,999 m2)	Individual boilers	Natural gas	-	-	-	131	-	-	-	-	-	-	-	-	-	No		Greenwich		BA 3/2/12	
546970	177610	GOLDIE LEIGH HOSPITAL	LODGE HILL, LONDON	SE2 0AS	Other public	No	NHS			-	-	-	-	-	-	-	-	-	-	-	-	-	No		Greenwich			
542832	175288	Gordon Primary School	Earlshall Road	SE9 1QG	Local government	No	Education facilities	Central Boilers	Natural gas	522.20	-	3,947.00	-	-	-	-	107.35	-	2010	-	-	RBG	No		Greenwich	Actual	BA 27/1/12	
543820	177728	Gordon's Gymnasium	29a, Herbert Road, London	SE18 3SZ	Private	No	Sport & Leisure facilities			-	-	-	-	-	-	-	-	-	-	-	-	-	No		Greenwich			
543070	172575	Greenacres Primary School	Witherston Way	SE9 3JN	Local government	No	Education facilities	Central Boilers	Natural gas	703.37	-	3,453.00	-	-	-	-	144.60	-	2010	-	-	RBG	No		Greenwich	Actual	BA 27/1/12	
544971	177680	Greenslade Primary School	Erindale Road	SE18 2QQ	Local government	No	Education facilities	Central Boilers	Natural gas	334.98	-	1,785.00	-	-	-	-	68.87	-	2010	-	-	RBG	No		Greenwich	Actual	BA 27/1/12	
544413	178869	Greenwich Community College	95 Plumstead Road	SE18 7DQ	Other public	No	Education facilities	Central Boilers	Natural gas	1,606.99	-	2,195.00	-	-	-	-	-	-	2010	-	-	RBG	No		Greenwich	Actual	BA 29/1/12	
542370	178348	Greenwich Disability Resource Centre	16 Sandpit Place	SE7 8HE	Local government	No	Local government estate	Central Boilers	Natural gas	420.91	-	-	-	-	-	-	86.53	-	2010	-	-	RBG	No		Greenwich	Estimated	BA 25/1/12	
538047	176856	GREENWICH FIRE STATION	14 BLISSET STREET	SE10 8UP	Other public	No	Fire stations	Individual boilers	Natural gas	284.60	-	1,329.00	-	0.24	-	-	-	1960	2009	-	-	Meters	No		Greenwich			
542272	177092	GREENWICH HEIGHTS	FLAT 41 MASTER GUNNER PLACE LONDON	SE184NW	Private	No	Private residential (> 149 units or 9,999 m2)	0	0	429.00	-	-	88	-	-	-	-	-	2012	-	-	Benchmark	No		Greenwich	Estimated	Energy demand estimated utilising the number of flats provided by the borough and a benchmark thermal demand of	

OXS	OYS	Name	Address	Postcode	Ownership	New Development	Typology	Heating supply	Fuel source	Fuel consumption: all assets exc. CHP (MWh/yr)	Fuel consumption: CHP (MWh/yr)	Gross internal floor area (m2)	Number of dwellings	Installed thermal capacity: all assets exc. CHP (MWth)	CHP installed electrical capacity (MWe)	CHP installed thermal capacity (MWth)	CO2 emissions (tCO2/yr)	Year of Construction	Year of data collection	Start date	Completion date	Data Source	Confidentiality of data	Attach file	Borough	Real or estimated data?	Notes
																											3,870kWh /year
543754	179292	Greenwich Heritage Centre	James Clavell Square	SE18 4DX	Local government	No	Museums & Art Galleries	Central Boilers	Natural gas	259.55	-	1,554.00	-	-	-	-	53.36	-	2010	-	-	RBG	No		Greenwich	Actual	BA 28/1/12
539218	179709	Greenwich Peninsula	Greenwich Peninsula	SE10	Private	Yes	Private residential (> 149 units or 9,999 m2)			-	-	-	10,010	-	-	-	-	-	2012	-	-	-	No		Greenwich		ADDED 6/2/12
539813	179480	Greenwich Peninsula	Mudlarks Boulevard and John Harrison Way	SE10	Private	Yes	Private residential (> 149 units or 9,999 m2)			-	-	-	229	-	-	-	-	-	2012	-	-	-	No		Greenwich		ADDED 6/2/12
538823	179886	Greenwich Peninsula	Peninsula Boulevard	SE10	Private	Yes	Private residential (> 149 units or 9,999 m2)			-	-	-	397	-	-	-	-	-	2012	-	-	-	No		Greenwich		ADDED 6/2/12
539478	179870	Greenwich Peninsula Cable Car	Phoenix Avenue	SE10	Private	Yes	Private residential (> 149 units or 9,999 m2)			-	-	45,741.00	1,505	-	-	-	-	-	2012	-	-	RBG	No		Greenwich		UPDATE D 22/2/12
538300	177317	GREENWICH POLICE STATION, METROPOLITAN POLICE	ROYAL HILL, LONDON	SE108RR	Other public	No	Police stations			-	-	-	-	-	-	-	-	-	-	-	-	-	No		Greenwich		
537876	177808	Greenwich Reach East	Thames Stree, Norway Street, Creek Road and Deptford Creek	SE10	Private	Yes	Private residential (> 149 units or 9,999 m2)			-	-	-	980	-	-	-	-	-	2012	-	-	-	No		Greenwich		ADDED 6/2/12
538689.11	178056.75	Greenwich Trading Company Ltd	Old Royal Naval College Foundation House, London, Greater London	SE10 9LW	Private	No	Museums & Art Galleries			-	-	-	-	-	-	-	-	-	-	-	-	-	No		Greenwich		
539137	178483	Greenwich Wharf (Lovell's, Grainte, Badcock's & Pipers)	Banning Street, Christchurch Way And Pelton Road	SE10 9PQ	Private	Yes	Private residential (> 149 units or 9,999 m2)			-	-	-	667	-	-	-	-	-	2012	-	-	-	No		Greenwich		ADDED 6/2/12
542619	174382	Grove Market Place	60 Eltham High Street	SE9	Private	Yes	Hotels (> 99 units or 4,999 m2)			-	-	-	86	-	-	-	-	-	2012	-	-	-	No		Greenwich		ADDED 9/2/12
545364	179621	H M PRISON BELMARSH	BELMARSH ROAD	SE280EB	Other public	No	Prisons			-	-	-	-	-	-	-	-	-	-	-	-	-	No		Greenwich		
537967	177528	Haddo House	Haddo Street	SE10 9SG	Local government	No	Private residential (> 149 units or 9,999 m2)	Individual boilers	Natural gas	-	-	-	110	-	-	-	-	-	-	-	-	-	No		Greenwich		BA 3/2/12

OXS	OYS	Name	Address	Postcode	Ownership	New Development	Typology	Heating supply	Fuel source	Fuel consumption: all assets exc. CHP (MWh/yr)	Fuel consumption: CHP (MWh/yr)	Gross internal floor area (m2)	Number of dwellings	Installed thermal capacity: all assets exc. CHP (MWth)	CHP installed electrical capacity (MWe)	CHP installed thermal capacity (MWth)	CO2 emissions (tCO2/yr)	Year of Construction	Year of data collection	Start date	Completion date	Data Source	Confidentiality of data	Attach file	Borough	Real or estimated data?	Notes	
541948	174911	Haimo Primary School	Haddo Street	SE9 6DY	Local government	No	Education facilities	Central Boilers	Natural gas	187.94	-	2,512.00	-	-	-	-	88.84	-	2010	-	-	RBG	No		Greenwich	Estimated	BA 27/1/12	
540062	178160	Halstow Primary School	Halstow Road	SE10 0LD	Local government	No	Education facilities	Central Boilers	Natural gas	278.43	-	2,701.00	-	-	-	-	57.24	-	2010	-	-	RBG	No		Greenwich	Estimated	BA 27/1/12	
547056	180505	HAROLD WILSON HOUSE	FLAT 101 1 ARNOTT CLOSE LONDON	SE288BD	Private	No	Private residential (> 149 units or 9,999 m2)			-	-	-	72	-	-	-	-	-	-	-	-	-	No		Greenwich			
542991	178681	Hastings House	Mulgrave Road	SE18 5RL	Local government	No	Private residential (> 149 units or 9,999 m2)	Central Boilers	Natural gas	1,499.62	-	-	89	-	-	-	-	-	-	2010	-	-	RBG	No		Greenwich	Actual	BA 3/2/12
544026	178679	Haven Lodge (Sheltered)	50 Vincent Road	SE18 6RG	Local government	No	Private residential (> 149 units or 9,999 m2)	Central Boilers	Natural gas	1,704.53	-	-	72	-	-	-	-	-	-	2010	-	-	RBG	No		Greenwich	Actual	BA 9/2/12
546726	180495	Hawksmoor Primary School	Bentham Road	SE28 8AS	Local government	No	Education facilities	Central Boilers	Natural gas	540.36	-	2,419.00	-	-	-	-	111.09	-	2010	-	-	RBG	No		Greenwich	Actual	BA 27/1/12	
539598	178181	Heart of East Greenwich	Vanbrugh Hill	SE10 9HE	Private	Yes	Private residential (> 149 units or 9,999 m2)	Assets including CHP	Natural gas	-	-	13,036.00	645	-	-	-	-	-	2012	-	-	RBG	No		Greenwich		UPDATE D 22/2/12	
542011	175689	Henwick Primary School	Henwick Road	SE9 6NZ	Local government	No	Education facilities	Central Boilers	Natural gas	437.27	-	2,972.00	-	-	-	-	89.89	-	2010	-	-	RBG	No		Greenwich	Actual	BA 27/1/12	
541705.65	179264.6	Her Majestys Coastguard (London)	Unit 28 34 Bowater Road ,London	SE18 5TF	Other public	No	Central government estate			-	-	-	-	-	-	-	-	-	-	-	-	No		Greenwich				
544754	179206	Heronsgate Primary School	Whinchat Road	SE28 0DW	Local government	No	Education facilities	Central Boilers	Natural gas	723.95	-	3,369.00	-	-	-	-	148.83	-	2010	-	-	RBG	No		Greenwich	Actual	BA 27/1/12	
541463	176652	Holburne Road 124 (Sheltered)	124 Holburne Road	SE3 8HT	Local government	No	Private residential (> 149 units or 9,999 m2)	Central Boilers	Natural gas	160.28	-	-	-	-	-	-	-	-	-	2010	-	-	RBG	No		Greenwich		ADDED 10/2/12
539761	179191	HOLLY COURT	FLAT 107 JOHN HARRISON WAY LONDON	SE100BL	Private	No	Private residential (> 149 units or 9,999 m2)			-	-	-	51	-	-	-	-	-	-	-	-	-	No		Greenwich			
541151	175396	Holy Family RC Primary School	Tudway Road	SE3 9XY	Local government	No	Education facilities	Central Boilers	Natural gas	263.45	-	1,324.00	-	-	-	-	54.16	-	2010	-	-	RBG	No		Greenwich	Actual	BA 27/1/12	
540842	173685	Horn Park Primary School	Alnwick Road	SE12 9BT	Local government	No	Education facilities	Central Boilers	Natural gas	235.95	-	2,471.00	-	-	-	-	48.51	-	2010	-	-	RBG	No		Greenwich	Estimated	BA 27/1/12	
540415	177530	Invicta Primary School	Invicta Road	SE3 7HE	Local government	No	Education facilities	Central Boilers	Natural gas	288.30	-	1,560.00	-	-	-	-	59.27	-	2010	-	-	RBG	No		Greenwich	Actual	BA 27/1/12	

OXS	OYS	Name	Address	Postcode	Ownership	New Development	Typology	Heating supply	Fuel source	Fuel consumption: all assets exc. CHP (MWh/yr)	Fuel consumption: CHP (MWh/yr)	Gross internal floor area (m2)	Number of dwellings	Installed thermal capacity: all assets exc. CHP (MWth)	CHP installed electrical capacity (MWe)	CHP installed thermal capacity (MWth)	CO2 emissions (tCO2/yr)	Year of Construction	Year of data collection	Start date	Completion date	Data Source	Confidentiality of data	Attach file	Borough	Real or estimated data?	Notes
538092	177469	James Wolfe Primary School	Randell Place	SE10 9LA	Local government	No	Education facilities	Central Boilers	Natural gas	603.94	-	3,096.00	-	-	-	-	124.16	-	2010	-	-	RBG	No		Greenwich	Actual	BA 27/1/12
544556	173924	JANE SEYMOUR COURT	FLAT 4 255 AVERY HILL ROAD LONDON	SE9 2ET	Private	No	Private residential (> 149 units or 9,999 m2)			-	-	-	56	-	-	-	-	-	-	-	-	-	No		Greenwich		
542974	179257	JIGGER MAST HOUSE	FLAT 101 MAST QUAY LONDON	SE185NH	Private	No	Private residential (> 149 units or 9,999 m2)			-	-	-	69	-	-	-	-	-	-	-	-	-	No		Greenwich		
546918	180738	KEYNES COURT	FLAT 201 ATTLEE ROAD LONDON	SE288DL	Private	No	Private residential (> 149 units or 9,999 m2)			-	-	-	64	-	-	-	-	-	-	-	-	-	No		Greenwich		
541246	176520	Kidbrooke Park Primary School	Hargood Road	SE3 8HS	Local government	No	Education facilities	Central Boilers	Natural gas	634.16	-	4,300.00	-	-	-	-	130.37	-	2010	-	-	RBG	No		Greenwich	Actual	BA 27/1/12
541728	175895	Kidbrooke Project	27-29 Carnbrook Road	SE3 8AD	Local government	No	Other public buildings	Central Boilers	Natural gas	46.90	-	440.00	-	-	-	-	9.64	-	2010	-	-	RBG	No		Greenwich	Actual	BA 27/1/12
541300	174850	Kidbrooke Village	Eltham Green Road	SE3	Private	Yes	Private residential (> 149 units or 9,999 m2)			-	-	24,614.00	449	-	-	-	-	-	2012	39988		RBG	No		Greenwich		UPDATED 22/2/12
539184	178127	KING WILLIAM IV HOTEL	TRAFALGAR ROAD, LONDON	SE109TX	Private	No	Hotels (> 99 units or 4,999 m2)			-	-	-	-	-	-	-	-	-	-	-	-	-	No		Greenwich		
541720	174208	Kings Park Youth Centre	Eltham Palace Road	SE9 5LX	Local government	No	Education facilities	Central Boilers	Natural gas	674.41	-	328.00	-	-	-	-	138.65	-	2010	-	-	RBG	No		Greenwich	Actual	ADDED 1/2/12
542892	179057	Kingsman Street 1-99	1-99 Kingsman Street	SE18 5QF	Local government	No	Private residential (> 149 units or 9,999 m2)	Individual boilers	Natural gas	303.42	-	-	53	-	-	-	-	-	2012	-	-	Benchmark	No		Greenwich	Estimated	BA 3/2/12
540448	178160	Land at rear of 40 Victoria Way	Victoria Way	SE7 7QS	Private	Yes	Private residential (> 149 units or 9,999 m2)			-	-	-	212	-	-	-	-	-	2012	-	-	-	No		Greenwich		ADDED 6/2/12
540423	177067	Langton Way 133 (Sheltered)	133 Langton Way	SE3 7JY	Local government	No	Private residential (> 149 units or 9,999 m2)	Central Boilers	Natural gas	769.26	-	-	-	-	-	-	-	-	2010	-	-	RBG	No		Greenwich		ADDED 10/2/12
539921	174994	LEE GREEN FIRE STATION	9 ELTHAM ROAD	SE12 8ES	Other public	No	Fire stations	Individual boilers	Natural gas	133.07	-	912.60	-	0.11	-	-	-	1906	2009	-	-	Meters	No		Greenwich		
542845	178585	Len Clifton House (Sheltered)	1 Cambridge Barracks Road	SE18 5SF	Local government	No	Private residential (> 149 units or	Central Boilers	Natural gas	756.72	-	-	-	-	-	-	-	-	2010	-	-	RBG	No		Greenwich		ADDED 10/2/12

OXS	OYS	Name	Address	Postcode	Ownership	New Development	Typology	Heating supply	Fuel source	Fuel consumption: all assets exc. CHP (MWh/yr)	Fuel consumption: CHP (MWh/yr)	Gross internal floor area (m2)	Number of dwellings	Installed thermal capacity: all assets exc. CHP (MWth)	CHP installed electrical capacity (MWe)	CHP installed thermal capacity (MWth)	CO2 emissions (tCO2/yr)	Year of Construction	Year of data collection	Start date	Completion date	Data Source	Confidentiality of data	Attach file	Borough	Real or estimated data?	Notes
							9,999 m2)																				
546738	180895	Linton Mead Primary School	Central Way	SE28 8DT	Local government	No	Education facilities	Central Boilers	Natural gas	427.15	-	2,425.00	-	-	-	-	87.81	-	2010	-	-	RBG	No		Greenwich	Actual	BA 27/1/12
542311	178070	Little Heath 40 (Sheltered)	40 Little Heath	SE7 8BQ	Local government	No	Private residential (> 149 units or 9,999 m2)	Central Boilers	Natural gas	637.49	-	-	-	-	-	-	-	-	2010	-	-	RBG	No		Greenwich		ADDED 10/2/12
543486	178643	Love Lane Development	Love Lane, Woolwich New Road and Wellington Street	SE18 6HQ	Private	Yes	Private residential (> 149 units or 9,999 m2)			-	-	18,675.00	960	-	-	-	-	-	2012	40638		RBG	No		Greenwich		UPDATE D 22/2/12
538388	177263	Magic Lantern	27 Gloucester Circus, London	SE10 8RY	Private	No	Museums & Art Galleries			-	-	-	-	-	-	-	-	-	-	-	-	-	No		Greenwich		
544932	177575	Mandela House (Sheltered)	2 Pendrell Street	SE18 2PQ	Local government	No	Private residential (> 149 units or 9,999 m2)	Central Boilers	Natural gas	542.77	-	-	-	-	-	-	-	-	2010	-	-	RBG	No		Greenwich		ADDED 10/2/12
540772	178570	Maritime Industrial Estate	Horizon Way	SE7 7AY	Private	Yes	Private commercial (> 9,999 m2)			-	-	10,875.00	20	-	-	-	-	-	2012	-	-	RBG	No		Greenwich		UPDATE D 22/2/12
539911	179343	MAURER COURT	FLAT 214 JOHN HARRISON WAY LONDON	SE100SX	Private	No	Private residential (> 149 units or 9,999 m2)			-	-	-	194	-	-	-	-	-	-	-	-	-	No		Greenwich		
538921	178214	MERCHANTS HOUSE	FLAT 1 COLLINGTON STREET LONDON	SE109LX	Private	No	Private residential (> 149 units or 9,999 m2)			-	-	-	64	-	-	-	-	-	-	-	-	-	No		Greenwich		
538861	177987	Meridian Primary School	Old Woolwich Road	SE10 9NY	Local government	No	Education facilities	Central Boilers	Natural gas	270.04	-	2,030.00	-	-	-	-	55.51	-	2010	-	-	RBG	No		Greenwich	Actual	BA 27/1/12
541775	173713	Middle Park Primary School	Middle Park Avenue	SE9 5RX	Local government	No	Education facilities	Central Boilers	Natural gas	558.44	-	4,315.00	-	-	-	-	114.80	-	2010	-	-	RBG	No		Greenwich	Actual	BA 27/1/12
544302	178993	Middlegate House (Greenwich Leisure Ltd)	1 Seymour Street	SE18 6SX	Private	No	Sport & Leisure facilities	Central Boilers	Natural gas	181.53	-	-	-	-	-	-	-	-	2009	-	-	RBG	No		Greenwich	Actual	BA 1/2/12
546923	180588	MILL COURT	FLAT 201 5 TITMUSS AVENUE LONDON	SE288BX	Private	No	Private residential (> 149 units or 9,999 m2)			-	-	-	60	-	-	-	-	-	-	-	-	-	No		Greenwich		
539131	180124	MILLENNIUM DOME	Greenwich	SE100BB	Private	No	Private commercial (> 9,999 m2)		Oil	107.55	-	-	-	0.03	-	-	31.42	-	1997	-	-	Boiler Sites	No		Greenwich		
539720	179052	Millennium Primary School	50 John Harrison Way	SE10 0BG	Local	No	Education	Central	Natural	487.94	-	2,845.00	-	-	-	-	100.31	-	2010	-	-	RBG	No		Greenwich	Actual	BA

OXS	OYS	Name	Address	Postcode	Ownership	New Development	Typology	Heating supply	Fuel source	Fuel consumption: all assets exc. CHP (MWh/yr)	Fuel consumption: CHP (MWh/yr)	Gross internal floor area (m2)	Number of dwellings	Installed thermal capacity: all assets exc. CHP (MWth)	CHP installed electrical capacity (MWe)	CHP installed thermal capacity (MWth)	CO2 emissions (tCO2/yr)	Year of Construction	Year of data collection	Start date	Completion date	Data Source	Confidentiality of data	Attach file	Borough	Real or estimated data?	Notes	
					government		facilities	Boilers	gas																		27/1/12	
541319	177042	Minnie Bennett House (Sheltered)	164 Shooters Hill	SE3 8RW	Local government	No	Private residential (> 149 units or 9,999 m2)	Central Boilers	Natural gas	496.00	-	-	-	-	-	-	-	-	-	2010	-	-	RBG	No		Greenwich		ADDED 10/2/12
543012	179259	MIZZEN MAST HOUSE	FLAT 101 MAST QUAY LONDON	SE185NP	Private	No	Private residential (> 149 units or 9,999 m2)			-	-	-	69	-	-	-	-	-	-	-	-	-	No		Greenwich			
541778	174205	Moatbridge Special Secondary School	Eltham Palace Road	SE9 5LX	Local government	No	Education facilities	Central Boilers	Natural gas	71.78	-	1,012.00	-	-	-	-	14.76	-	2010	-	-	RBG	No		Greenwich	Actual	BA 27/1/12	
543480	171884	Montbelle Primary School	Milverton Way	SE9 3EY	Local government	No	Education facilities	Central Boilers	Natural gas	320.26	-	2,576.00	-	-	-	-	65.84	-	2010	-	-	RBG	No		Greenwich	Actual	BA 27/1/12	
540095	176757	MORDEN COLLEGE (GREENWICH)	St Germans Pl	SE30PW	Private	No	Education facilities		Oil	21.51	-	-	-	0.01	-	-	6.28	-	1997	-	-	Boiler Sites	No		Greenwich			
538009	176446	Morden Mount Primary School	Lewisham Road	SE13 7QP	Local government	No	Education facilities	Central Boilers	Natural gas	339.16	-	2,362.00	-	-	-	-	69.72	-	2010	-	-	RBG	No		Greenwich	Actual	BA 27/1/12	
537709	177020	Mortuary and Coroners Office	3 Devonshire Drive	SE10 8LP	Local government	No	Local government estate	Central Boilers	Natural gas	340.67	-	825.00	-	-	-	-	70.03	-	2010	-	-	RBG	No		Greenwich	Actual	ADDED 1/2/12	
543172	178634	Mulgrave Primary School	Rectory Place	SE18 5DA	Local government	No	Education facilities	Central Boilers	Natural gas	291.07	-	2,873.00	-	-	-	-	59.84	-	2010	-	-	RBG	No		Greenwich	Actual	BA 27/1/12	
542649.61	178142.04	Museum of Artillery		SE18 4BQ	Private	No	Museums & Art Galleries			-	-	-	-	-	-	-	-	-	-	-	-	No		Greenwich				
538665	177708	National Maritime Museum (Visit Britain Assessed)		SE10 9NF	Private	No	Museums & Art Galleries			-	-	-	-	-	-	-	-	-	-	-	-	No		Greenwich				
544062	172982	New Eltham Library	Southwood Road	SE9 3QT	Local government	No	Other public buildings	Electric heating	Electricity	140.72	-	288.00	-	-	-	-	-	-	2010	-	-	RBG	No		Greenwich	Estimated	BA 1/2/12	
541731	175476	Newhaven Pupil Referral Unit	Newhaven Gardens	SE9 6HR	Local government	No	Education facilities	Central Boilers	Natural gas	506.25	-	3,502.00	-	-	-	-	104.07	-	2010	-	-	RBG	No		Greenwich	Actual	BA 27/1/12	
543522	177888	Nightingale Heights	2 - 186 Nightingale Vale	SE18 4HH	Local government	No	Private residential (> 149 units or 9,999 m2)	Central Boilers	Natural gas	1,562.81	-	-	93	-	-	-	-	-	-	2010	-	-	RBG	No		Greenwich	Actual	BA 3/2/12
543862	178050	Nightingale Primary School	Bloomfield Road	SE18 7JJ	Local government	No	Education facilities	Central Boilers	Natural gas	204.98	-	1,094.00	-	-	-	-	42.14	-	2010	-	-	RBG	No		Greenwich	Actual	BA 27/1/12	
543643	177841	Notre Dame RC Primary School	169 Eglington Road	SE18 3SJ	Local government	No	Education facilities	Central Boilers	Natural gas	194.69	-	1,313.00	-	-	-	-	40.02	-	2010	-	-	RBG	No		Greenwich	Actual	BA 27/1/12	
539205	179909	One Peninsula Square, Plot No 201	Millenium Way	SE10	Private	Yes	Private commercial (> 9,999 m2)			-	-	20,997.00	-	-	-	-	-	-	2012	-	-	RBG	No		Greenwich		UPDATE D 22/2/12	
540928	177615	Our Lady Of Grace RC Primary School	Charlton Road	SE7 7EZ	Local government	No	Education facilities	Central Boilers	Natural gas	178.99	-	1,190.00	-	-	-	-	36.80	-	2010	-	-	RBG	No		Greenwich	Actual	BA 27/1/12	

OXS	OYS	Name	Address	Postcode	Ownership	New Development	Typology	Heating supply	Fuel source	Fuel consumption: all assets exc. CHP (MWh/yr)	Fuel consumption: CHP (MWh/yr)	Gross internal floor area (m2)	Number of dwellings	Installed thermal capacity: all assets exc. CHP (MWth)	CHP installed electrical capacity (MWe)	CHP installed thermal capacity (MWth)	CO2 emissions (tCO2/yr)	Year of Construction	Year of data collection	Start date	Completion date	Data Source	Confidentiality of data	Attach file	Borough	Real or estimated data?	Notes	
537282	178078	Paynes & Borthwick Wharf	Borthwick Street	SE8	Private	Yes	Private residential (> 149 units or 9,999 m2)			-	-	-	257	-	-	-	-	-	-	2012	-	-	-	No		Greenwich		ADDED 6/2/12
538040	176339	Pitmaston House	Lewisham Road	SE13 7NG	Local government	No	Private residential (> 149 units or 9,999 m2)	Electric heating	Electricity	248.80	-	-	46	-	-	-	-	-	-	2012	-	-	Benchmark	No		Greenwich	Estimated	ADDED 1/2/12
544174	177512	Plumcroft Primary School	Plum Lane	SE18 3HW	Local government	No	Education facilities	Central Boilers	Natural gas	582.40	-	3,589.00	-	-	-	-	119.73	-	2010	-	-	RBG	No		Greenwich	Actual	BA 27/1/12	
545313	178574	PLUMSTEAD FIRE STATION	1 LAKEDALE ROAD	SE18 1PP	Other public	No	Fire stations	Individual boilers	Natural gas	155.20	-	731.00	-	0.13	-	-	-	-	1907	2009	-	-	Meters	No		Greenwich		
545644	178463	Plumstead Library	232 Plumstead High Street	SE18 1JL	Local government	No	Other public buildings	Electric heating	Electricity	48.87	-	176.50	-	-	-	-	-	-	-	2010	-	-	RBG	No		Greenwich	Actual	BA 1/2/12
544856	178003	Plumstead Manor Secondary School	Old Mill Road	SE18 1QF	Local government	No	Education facilities	Central Boilers	Natural gas	2,339.20	-	11,454.00	-	-	-	-	480.89	-	2010	-	-	RBG	No		Greenwich	Estimated	BA 27/1/12	
546190	177737	Plumstead Manor Secondary School (Sixth Form Negus Centre)	Wickham Lane	SE2 0XX	Local government	No	Education facilities	Central Boilers	Natural gas	372.89	-	3,499.00	-	-	-	-	76.66	-	2010	-	-	RBG	No		Greenwich	Estimated	BA 27/1/12	
545609	178480	PLUMSTEAD POLICE STATION, METROPOLITAN POLICE	PLUMSTEAD HIGH STREET, LONDON	SE181JY	Other public	No	Police stations			-	-	-	-	-	-	-	-	-	-	-	-	-	No		Greenwich			
545631	178363	Plumstead Sports Centre	Speranza Street	SE18 1NX	Local government	No	Sport & Leisure facilities	Central Boilers	Natural gas	223.96	-	1,998.00	-	-	-	-	41.43	-	2008	-	-	RBG	No		Greenwich	Actual	BA 1/2/12	
541728	178557	Pound Park Nursery School and Children's Centre	Pound Park Road	SE7 8AF	Local government	No	Education facilities	Central Boilers	Natural gas	92.92	-	356.00	-	-	-	-	19.10	-	2010	-	-	RBG	No		Greenwich	Actual	BA 27/1/12	
542460	177462	QUEEN ELIZABETH HOSPITAL NHS TRUST	STADIUM ROAD, LONDON	SE184QH	Other public	No	NHS	0	Natural gas	7,294.00	-	-	-	-	-	-	-	-	-	2012	-	-	Benchmark	No		Greenwich	Estimated	Demand figure taken from 2010 DEC assessment, assuming an 80% efficient gas boiler
537362	177674	Rachel McMillan Nursery School and Children's Centre	McMillan Street	SE8 3EH	Local government	No	Education facilities	Central Boilers	Natural gas	277.93	-	1,183.00	-	-	-	-	57.14	-	2010	-	-	RBG	No		Greenwich	Estimated	BA 27/1/12	
540221	174895	Ravens Way 130-184	130-184 Ravens Way	SE12 8EZ	Local government	No	Private residential (> 149 units or	Assets including CHP	Natural gas	-	601.27	-	-	-	-	-	-	-	-	2010	-	-	RBG	No		Greenwich	Estimated	ADDED 1/2/12

OXS	OYS	Name	Address	Postcode	Ownership	New Development	Typology	Heating supply	Fuel source	Fuel consumption: all assets exc. CHP (MWh/yr)	Fuel consumption: CHP (MWh/yr)	Gross internal floor area (m2)	Number of dwellings	Installed thermal capacity: all assets exc. CHP (MWth)	CHP installed electrical capacity (MWe)	CHP installed thermal capacity (MWth)	CO2 emissions (tCO2/yr)	Year of Construction	Year of data collection	Start date	Completion date	Data Source	Confidentiality of data	Attach file	Borough	Real or estimated data?	Notes
							9,999 m2)																				
546826	180818	RAYMOND POSTGATE COURT	FLAT 201 1 TAWNEY ROAD LONDON	SE288DR	Private	No	Private residential (> 149 units or 9,999 m2)			-	-	-	80	-	-	-	-	-	-	-	-	-	No		Greenwich		
545098	178770	Richard Neve House (Sheltered)	57 Plumstead High Street	SE18 1SS	Local government	No	Private residential (> 149 units or 9,999 m2)	Central Boilers	Natural gas	269.42	-	-	-	-	-	-	-	-	2010	-	-	RBG	No		Greenwich		ADDED 10/2/12
544657	178552	River Heights	46-224 Elmley Street	SE18 7NL	Local government	No	Private residential (> 149 units or 9,999 m2)	Central Boilers	Natural gas	1,274.49	-	-	93	-	-	-	-	-	2010	-	-	RBG	No		Greenwich	Actual	CONSUMPTION HALVED WITH 5597
544730	178613	River Heights	177-359 Glyndon Road	SE18 7NX	Local government	No	Private residential (> 149 units or 9,999 m2)	Central Boilers	Natural gas	1,274.49	-	-	93	-	-	-	-	-	2010	-	-	RBG	No		Greenwich	Actual	CONSUMPTION HALVED WITH 5912
543475	179195	Riverside House	Woolwich High Street	SE18 6BU	Local government	No	Education facilities	Electric heating	Electricity	722.08	-	4,408.00	-	-	-	-	-	-	2010	-	-	RBG	No		Greenwich	Estimated	BA 1/2/12
540434	174835	RIVERSTON SCHOOL	RIVERSTON SCHOOL	SE128UF	Private	No	Education facilities			-	-	-	-	-	-	-	-	-	-	-	-	-	No		Greenwich		
543838	177623	RIXON HOUSE	FLAT 1 BARNFIELD ROAD LONDON	SE183TX	Local government	No	Private residential (> 149 units or 9,999 m2)	Individual boilers	Natural gas	-	-	-	56	-	-	-	-	-	-	-	-	-	No		Greenwich		BA 10/2/12
539394	178367	Robert Owen Early Year's Centre	43 Commerell Street	SE10 0EA	Local government	No	Education facilities	Central Boilers	Natural gas	231.35	-	1,307.00	-	-	-	-	47.56	-	2010	-	-	RBG	No		Greenwich	Actual	BA 28/1/12
542637	176638	ROBERTSON HOUSE	FLAT 8-11 GILBERT CLOSE ROYAL HERBERT PAVILIONS LONDON	SE184PR	Private	No	Private residential (> 149 units or 9,999 m2)			-	-	-	71	-	-	-	-	-	-	-	-	-	No		Greenwich		
538243	177828	Rockfield House	Welland Street	SE10 9DR	Local government	No	Private residential (> 149 units or 9,999 m2)	Individual boilers	Natural gas	-	-	-	60	-	-	-	-	-	-	-	-	-	No		Greenwich		BA 3/2/12
545548	177564	Rockcliffe Manor Primary School	Bassant Road	SE18 2NP	Local government	No	Education facilities	Central Boilers	Natural gas	288.41	-	1,372.00	-	-	-	-	59.29	-	2010	-	-	RBG	No		Greenwich	Actual	BA 27/1/12
539508	178589	Rothbury Hall	Azof Street	SE10 0EF	Local government	No	Other public buildings	Central Boilers	Natural gas	67.87	-	895.00	-	-	-	-	-	-	2010	-	-	RBG	No		Greenwich	Estimated	BA 1/2/12
543840	179245	Royal Artillery Museums	Royal Laboratory Offices Royal Arsenal West Warren	SE18 6ST	Private	No	Museums & Art Galleries			-	-	-	-	-	-	-	-	-	-	-	-	No		Greenwich			

OXS	OYS	Name	Address	Postcode	Ownership	New Development	Typology	Heating supply	Fuel source	Fuel consumption: all assets exc. CHP (MWh/yr)	Fuel consumption: CHP (MWh/yr)	Gross internal floor area (m2)	Number of dwellings	Installed thermal capacity: all assets exc. CHP (MWth)	CHP installed electrical capacity (MWe)	CHP installed thermal capacity (MWth)	CO2 emissions (tCO2/yr)	Year of Construction	Year of data collection	Start date	Completion date	Data Source	Confidentiality of data	Attach file	Borough	Real or estimated data?	Notes	
			Lane, London																									
537951	176307	Russett Way 1-54	1-54 Russett Way	SE13 7LY	Local government	No	Private residential (> 149 units or 9,999 m2)	Individual boilers	Natural gas	328.76	-	-	54	-	-	-	-	-	-	2012	-	-	Benchmark	No		Greenwich	Estimated	BA 3/2/12
540825	178984	Sainsbury's, 50	Lombard Wall	SE7 7SP	Private	Yes	Private commercial (> 9,999 m2)			-	-	26,357.00	-	-	-	-	-	-	-	2012	-	-	RBG	No		Greenwich		UPDATE D 22/2/12
539213	178035	Sam Manners House (Sheltered)	Tuskar Street	SE10 9UJ	Local government	No	Private residential (> 149 units or 9,999 m2)	Central Boilers	Natural gas	1,367.28	-	-	-	-	-	-	-	-	-	2010	-	-	RBG	No		Greenwich		ADDED 10/2/12
542633	178730	Samuel Street (Block 1)	Samuel Street	SE18 5LE	Local government	No	Private residential (> 149 units or 9,999 m2)	Individual boilers	Natural gas	353.72	-	-	57	-	-	-	-	-	-	2012	-	-	Benchmark	No		Greenwich	Estimated	BA 3/2/12
542815	178818	Sarah Turnbull House (Sheltered)	43 Brewhouse Road	SE18 5SH	Local government	No	Private residential (> 149 units or 9,999 m2)	Central Boilers	Natural gas	856.11	-	-	-	-	-	-	-	-	-	2010	-	-	RBG	No		Greenwich		ADDED 10/2/12
544425	179601	SARK TOWER	5 EREBUS DRIVE LONDON	SE280GG	Private	No	Private residential (> 149 units or 9,999 m2)			-	-	-	56	-	-	-	-	-	-	-	-	-	No		Greenwich			
539373	177830	Seren Park	Restell Close	SE3 7UL	Private	Yes	Private residential (> 149 units or 9,999 m2)			-	-	-	277	-	-	-	-	-	-	2012	-	-	-	No		Greenwich		ADDED 6/2/12
541190	174295	Shapes	400, Westhorne Avenue, London	SE9 5LT	Private	No	Sport & Leisure facilities			-	-	-	-	-	-	-	-	-	-	-	-	-	No		Greenwich			
542367	174803	Sherard Road Day Centre	81 Tattershall Close	SE9 6ET	Local government	No	Local government estate	Central Boilers	Natural gas	273.31	-	1,194.00	-	-	-	-	56.19	-	2010	-	-	RBG	No		Greenwich	Actual	ADDED 1/2/12	
540766	177673	Sherington Primary School	Wyndcliff Road	SE7 7JP	Local government	No	Education facilities	Central Boilers	Natural gas	558.67	-	2,960.00	-	-	-	-	114.85	-	2010	-	-	RBG	No		Greenwich	Actual	BA 27/1/12	
543363	176958	Shooters Hill Post 16 Campus	Red Lion Lane	SE18 4LD	Local government	No	Education facilities	Central Boilers	Natural gas	3,091.17	-	13,795.00	-	-	-	-	635.48	-	2010	-	-	RBG	No		Greenwich	Actual	ADDED 1/2/12	
544652	178443	South Rise Primary School	Brewery Road	SE18 7PX	Local government	No	Education facilities	Central Boilers	Natural gas	647.19	-	3,604.00	-	-	-	-	133.05	-	2010	-	-	RBG	No		Greenwich	Actual	BA 27/1/12	
546408	179120	Sports Centre			Private	No	Sport & Leisure facilities			-	-	-	-	-	-	-	-	-	-	-	-	-	No		Greenwich			

OXS	OYS	Name	Address	Postcode	Ownership	New Development	Typology	Heating supply	Fuel source	Fuel consumption: all assets exc. CHP (MWh/yr)	Fuel consumption: CHP (MWh/yr)	Gross internal floor area (m2)	Number of dwellings	Installed thermal capacity: all assets exc. CHP (MWth)	CHP installed electrical capacity (MWe)	CHP installed thermal capacity (MWth)	CO2 emissions (tCO2/yr)	Year of Construction	Year of data collection	Start date	Completion date	Data Source	Confidentiality of data	Attach file	Borough	Real or estimated data?	Notes
540097.46	174977.15	Sports Club			Private	No	Sport & Leisure facilities			-	-	-	-	-	-	-	-	-	-	-	-	-	No		Greenwich		
538107	177726	St Alfege with St Peter's Primary School	Creek Road	SE10 9RB	Local government	No	Education facilities	Central Boilers	Natural gas	208.20	-	1,130.00	-	-	-	-	42.80	-	2010	-	-	RBG	No		Greenwich	Actual	BA 27/1/12
539406	178330	St Joseph's RC Primary School	Commerell Street	SE10 9AN	Local government	No	Education facilities	Central Boilers	Natural gas	222.17	-	1,179.00	-	-	-	-	45.67	-	2010	-	-	RBG	No		Greenwich	Estimated	BA 27/1/12
546767	180138	St Margaret Clitherow RC Primary School	Cole Close	SE28 8AU	Local government	No	Education facilities	Central Boilers	Natural gas	147.21	-	1,045.00	-	-	-	-	30.26	-	2010	-	-	RBG	No		Greenwich	Actual	BA 27/1/12
544233	178080	St Margaret's CE Primary School	St. Margaret'S Grove	SE18 7RL	Local government	No	Education facilities	Central Boilers	Natural gas	244.71	-	1,273.00	-	-	-	-	50.31	-	2010	-	-	RBG	No		Greenwich	Estimated	BA 27/1/12
543194	178935	St Mary Magdalene CE Primary School	Kingsman Street	SE18 5PW	Local government	No	Education facilities	Central Boilers	Natural gas	290.63	-	-	-	-	-	-	-	-	2012	-	-	Benchmark	No		Greenwich	Estimated	RECENTLY REBUILT
543466	174780	St Mary's RC Primary School	Glenure Road	SE9 1UF	Local government	No	Education facilities	Central Boilers	Natural gas	330.47	-	458.00	-	-	-	-	67.94	-	2010	-	-	RBG	No		Greenwich	Actual	BA 27/1/12
544889	178605	St Patrick's RC Primary School	Griffin Road	SE18 7QG	Local government	No	Education facilities	Central Boilers	Natural gas	207.86	-	1,814.00	-	-	-	-	42.73	-	2010	-	-	RBG	No		Greenwich	Estimated	BA 27/1/12
546256	179164	St Paul's Academy	Eynsham Drive	SE2 9AJ	Local government	No	Education facilities	Central Boilers	Natural gas	812.77	-	3,377.00	-	-	-	-	167.09	-	2010	-	-	RBG	No		Greenwich	Actual	BA 27/1/12
543718	178496	St Peter's RC Primary School	24 Crescent Road	SE18 7BN	Local government	No	Education facilities	Central Boilers	Natural gas	194.22	-	1,798.00	-	-	-	-	39.93	-	2010	-	-	RBG	No		Greenwich	Actual	BA 27/1/12
546181	179054	St Thomas A Becket RC Primary School	Mottisfont Road	SE2 9LY	Local government	No	Education facilities	Central Boilers	Natural gas	184.29	-	1,461.00	-	-	-	-	37.89	-	2010	-	-	RBG	No		Greenwich	Actual	BA 27/1/12
542156	175625	St Thomas More RC Primary School	Appleton Road	SE9 6NS	Local government	No	Education facilities	Central Boilers	Natural gas	184.84	-	731.00	-	-	-	-	38.00	-	2010	-	-	RBG	No		Greenwich	Actual	BA 27/1/12
543305	174135	St Thomas More RC Secondary School	Footscray Road	SE9 2SU	Local government	No	Education facilities	Central Boilers	Natural gas	549.53	-	4,974.00	-	-	-	-	112.97	-	2010	-	-	RBG	No		Greenwich	Actual	BA 27/1/12
538544	177096	St Ursula's Convent RC Secondary School	70 Crooms Hill	SE10 8HN	Local government	No	Education facilities	Central Boilers	Natural gas	737.31	-	5,212.00	-	-	-	-	151.58	-	2010	-	-	RBG	No		Greenwich	Actual	BA 27/1/12
538109	177773	Stanton House	Thames Street	SE10 9DJ	Local government	No	Private residential (> 149 units or 9,999 m2)	Individual boilers	Natural gas	-	-	-	60	-	-	-	-	-	-	-	-	-	No		Greenwich		BA 3/2/12
545501	178499	Strand Court (Sheltered)	33 Strandfield Close	SE18 1LB	Local government	No	Private residential (> 149 units or 9,999 m2)	Central Boilers	Natural gas	1,387.92	-	-	60	-	-	-	-	-	2010	-	-	RBG	No		Greenwich	Actual	BA 3/2/12
542769	174745	Strongbow Crescent 2-72	2-72 Strongbow Crescent	SE9 1DP	Local government	No	Private residential (> 149 units or 9,999 m2)	Individual boilers	Natural gas	-	-	-	72	-	-	-	-	-	2012	-	-	-	No		Greenwich		BA 3/2/12
545422	177159	Swingate Lane 174	174 Swingate Lane	SE18 2HW	Local	No	Private	Central	Natural	509.03	-	-	-	-	-	-	-	-	2010	-	-	RBG	No		Greenwich		ADDED

OXS	OYS	Name	Address	Postcode	Ownership	New Development	Typology	Heating supply	Fuel source	Fuel consumption: all assets exc. CHP (MWh/yr)	Fuel consumption: CHP (MWh/yr)	Gross internal floor area (m2)	Number of dwellings	Installed thermal capacity: all assets exc. CHP (MWth)	CHP installed electrical capacity (MWe)	CHP installed thermal capacity (MWth)	CO2 emissions (tCO2/yr)	Year of Construction	Year of data collection	Start date	Completion date	Data Source	Confidentiality of data	Attach file	Borough	Real or estimated data?	Notes	
		(Sheltered)			government		residential (> 149 units or 9,999 m2)	Boilers	gas																		10/2/12	
542300	174794	Tattersall Close	Tattersall Close	SE9 6EU	Local government	No	Private residential (> 149 units or 9,999 m2)			-	-	-	80	-	-	-	-	-	-	2012	-	-	-	No		Greenwich		ADDED 1/2/12
546975	180540	THAMESMEAD POLICE STATION, METROPOLITAN POLICE	TITMUSS AVENUE, LONDON	SE288HL	Other public	No	Police stations			-	-	-	-	-	-	-	-	-	-	-	-	-	No		Greenwich			
546476	180869	Thamesmere Leisure Centre	Thamesmere Drive	SE28 8RE	Local government	No	Sport & Leisure facilities	Central Boilers	Natural gas	1,748.19	-	3,173.00	-	-	-	-	323.36	-	2008	-	-	RBG	No		Greenwich	Actual	BA 1/2/12	
543066	177231	The Academy (Former Royal Military Academy)	Academy Road / Red Lion Lane	SE18	Private	Yes	Private residential (> 149 units or 9,999 m2)			-	-	853.00	328	-	-	-	-	-	2012	40004	-	RBG	No		Greenwich		UPDATE D 22/2/12	
538412	177438	The Fan Museum	12 Crooms Hill, London	SE10 8ER	Private	No	Museums & Art Galleries			-	-	-	-	-	-	-	-	-	-	-	-	-	No		Greenwich			
539630	177440	The John Roan Lower Secondary School (Westcombe Park)	Westcombe Park Road	SE3 7QR	Local government	No	Education facilities	Central Boilers	Natural gas	723.09	-	3,933.00	-	-	-	-	148.65	-	2010	-	-	RBG	No		Greenwich	Actual	BA 27/1/12	
539473	177429	The John Roan Upper Secondary School (Maze Hill)	Maze Hill	SE3 7UD	Local government	No	Education facilities	Central Boilers	Natural gas	483.43	-	4,525.00	-	-	-	-	99.38	-	2010	-	-	RBG	No		Greenwich	Actual	BA 27/1/12	
544126	178055	The Oaks	Burrage Road	SE18 7JR	Local government	No	Private residential (> 149 units or 9,999 m2)	Individual boilers	Natural gas	-	-	-	84	-	-	-	-	-	-	2012	-	-	-	No		Greenwich		BA 3/2/12
540118	176958	THE POINTER SCHOOL	THE POINTER SCHOOL	SE3 7TH	Private	No	Education facilities			-	-	-	-	-	-	-	-	-	-	-	-	-	No		Greenwich			
543423	178942	THE VISTA BUILDING	FLAT 301 30 CALDERWOOD STREET LONDON	SE186JF	Private	No	Private residential (> 149 units or 9,999 m2)			-	-	-	240	-	-	-	-	-	-	-	-	-	No		Greenwich			
540857	175952	Thomas Tallis Secondary School	Kidbrooke Park Road	SE3 9PX	Local government	No	Education facilities	Central Boilers	Natural gas	1,512.14	-	10,659.00	-	-	-	-	310.87	-	2010	-	-	RBG	No		Greenwich	Actual	BA 27/1/12	
537956	177628	Thornham Street	Thornham Street	SE10 9SA	Local government	No	Private residential (> 149 units or 9,999 m2)	Individual boilers	Natural gas	-	-	-	70	-	-	-	-	-	-	2012	-	-	-	No		Greenwich		BA 3/2/12
541837	178397	Thorntree Primary School	Thorntree Road	SE7 8AE	Local government	No	Education facilities	Central Boilers	Natural gas	203.18	-	1,132.00	-	-	-	-	41.77	-	2010	-	-	RBG	No		Greenwich	Actual	BA 27/1/12	

OXS	OYS	Name	Address	Postcode	Ownership	New Development	Typology	Heating supply	Fuel source	Fuel consumption: all assets exc. CHP (MWh/yr)	Fuel consumption: CHP (MWh/yr)	Gross internal floor area (m2)	Number of dwellings	Installed thermal capacity: all assets exc. CHP (MWth)	CHP installed electrical capacity (MWe)	CHP installed thermal capacity (MWth)	CO2 emissions (tCO2/yr)	Year of Construction	Year of data collection	Start date	Completion date	Data Source	Confidentiality of data	Attach file	Borough	Real or estimated data?	Notes
542300	179261	TIDESIDE COURT	FLAT 41 HARLINGER STREET LONDON	SE185SW	Private	No	Private residential (> 149 units or 9,999 m2)			-	-	-	64	-	-	-	-	-	-	-	-	-	No		Greenwich		
546267	180805	Tigers Eye	2, Joyce Dawson Way, London	SE28 8RA	Private	No	Sport & Leisure facilities			-	-	-	-	-	-	-	-	-	-	-	-	-	No		Greenwich		
545264	177428	Timbercroft Primary School	Timbercroft Lane	SE18 2SG	Local government	No	Education facilities	Central Boilers	Natural gas	375.81	-	1,968.00	-	-	-	-	77.26	-	2010	-	-	RBG	No		Greenwich	Actual	BA 27/1/12
543672	178755	Tramshed Theatre	51-53 Woolwich New Road	SE18 6ES	Other public	No	Sport & Leisure facilities	Central Boilers	Natural gas	32.02	-	889.00	-	-	-	-	5.92	-	2008	-	-	RBG	No		Greenwich	Actual	BA 1/2/12
538828	178149	TRINITY HOSPITAL	HIGH BRIDGE, LONDON	SE109PS	Other public	No	NHS	0	0	713.25	-	-	-	-	-	-	-	-	2012	-	-	Benchmark	No		Greenwich	Estimated	0
545841	180816	Tripcock Point	Thamesmead	SE28	Private	Yes	Private residential (> 149 units or 9,999 m2)	Assets including CHP	Natural gas	-	-	-	2,000	-	-	-	-	-	2012	-	-	-	No		Greenwich		ADDED 6/2/12
544424	174440	University of Greenwich	Mansion Site Avery Hill Campus, Bexley Road, London	SE9 2PQ	Private	No	Education facilities			-	-	-	-	-	-	-	-	-	-	-	-	No		Greenwich			
538525	177885	University of Greenwich	Maritime Greenwich Campus Old Royal Naval College, Park Row, London	SE10 9LS	Private	No	Education facilities			-	-	-	-	-	-	-	-	-	-	-	-	No		Greenwich			
544509	173818	University of Greenwich	Southwood Site Avery Hill Campus, Avery Hill Road, London	SE9 2UG	Private	No	Education facilities			-	-	-	-	-	-	-	-	-	-	-	-	No		Greenwich			
544275	173701	Valley Leisure Centre			Private	No	Sport & Leisure facilities			-	-	-	-	-	-	-	-	-	-	-	-	No		Greenwich			
543636	178566	Walpole Place 1-87	1-87 Walpole Place	SE18 6TW	Local government	No	Private residential (> 149 units or 9,999 m2)	Individual boilers	Natural gas	-	-	-	87	-	-	-	-	-	2012	-	-	-	No		Greenwich		BA 3/2/12
537976	176376	Warner House	Russett Way	SE13 7ND	Local government	No	Private residential (> 149 units or 9,999 m2)	Electric heating	Electricity	210.95	-	-	45	-	-	-	-	-	2012	-	-	Benchmark	No		Greenwich	Estimated	ADDED 1/2/12
543339	179252	Waterfront Leisure Centre	Woolwich High Street	SE18 6DL	Local government	No	Sport & Leisure facilities	Central Boilers	Natural gas	2,365.51	-	8,618.00	-	-	-	-	437.55	-	2008	-	-	RBG	No		Greenwich	Actual	BA 1/2/12
544602	178478	Waterside Special Primary School	Robert Street	SE18 7NB	Local government	No	Education facilities	Central Boilers	Natural gas	214.80	-	1,163.00	-	-	-	-	44.16	-	2010	-	-	RBG	No		Greenwich	Actual	BA 27/1/12

OXS	OYS	Name	Address	Postcode	Ownership	New Development	Typology	Heating supply	Fuel source	Fuel consumption: all assets exc. CHP (MWh/yr)	Fuel consumption: CHP (MWh/yr)	Gross internal floor area (m2)	Number of dwellings	Installed thermal capacity: all assets exc. CHP (MWth)	CHP installed electrical capacity (MWe)	CHP installed thermal capacity (MWth)	CO2 emissions (tCO2/yr)	Year of Construction	Year of data collection	Start date	Completion date	Data Source	Confidentiality of data	Attach file	Borough	Real or estimated data?	Notes
546799	180192	Waterways Community Children's Centre	Southwood Road	SE28 8EZ	Local government	No	Education facilities	Central Boilers	Natural gas	248.35	-	-	-	-	-	-	51.06	-	2010	-	-	RBG	No		Greenwich	Actual	ADDED 1/2/12
546892	180791	WEBB COURT	FLAT 201 ATTLEE ROAD LONDON	SE288DN	Private	No	Private residential (> 149 units or 9,999 m2)			-	-	-	80	-	-	-	-	-	-	-	-	-	No		Greenwich		
542671	176285	Well Hall Road	Well Hall Road	SE9 6TY	Local government	No	Private residential (> 149 units or 9,999 m2)	Individual boilers	Natural gas	-	-	-	57	-	-	-	-	-	2012	-	-	-	No		Greenwich		BA 3/2/12
540463	177461	Wentworth House (Sheltered)	35 Charlton Road	SE3 7HH	Local government	No	Private residential (> 149 units or 9,999 m2)	Central Boilers	Natural gas	667.04	-	-	50	-	-	-	-	-	2010	-	-	RBG	No		Greenwich	Actual	BA 3/2/12
538202	177324	West Greenwich Library	146 Greenwich High Road	SE10 8NN	Local government	No	Other public buildings	Central Boilers	Natural gas	129.08	-	600.00	-	-	-	-	26.54	-	2010	-	-	RBG	No		Greenwich	Estimated	BA 27/1/12
540200	178236	WESTCOMBE PARK POLICE STATION, METROPOLITAN POLICE	COMBEDALE ROAD, LONDON	SE100LQ	Other public	No	Police stations			-	-	-	-	-	-	-	-	-	-	-	-	No		Greenwich			
539741	177425	Westcombe Park Road	Westcombe Park Road	SE3 7QA	Local government	No	Private residential (> 149 units or 9,999 m2)	Individual boilers	Natural gas	-	-	-	64	-	-	-	-	-	-	-	-	No		Greenwich		BA 3/2/12	
544671	179287	Whinchat Road	Whinchat Road	SE28 0DZ	Private	No	Private residential (> 149 units or 9,999 m2)			-	-	-	92	-	-	-	-	-	2012	-	-	-	No		Greenwich		ADDED 1/2/12
537608	176864	WHITE SWAN HOTEL	BLACKHEATH ROAD, LONDON	SE108PE	Private	No	Hotels (> 99 units or 4,999 m2)			-	-	-	-	-	-	-	-	-	-	-	-	No		Greenwich			
545267	176935	Willow Dene Special Primary School	Swingate Lane	SE18 2JD	Local government	No	Education facilities	Central Boilers	Natural gas	863.98	-	4,683.00	-	-	-	-	177.62	-	2010	-	-	RBG	No		Greenwich	Actual	BA 27/1/12
546947	180348	Windrush Primary School	2 Bentham Road	SE28 8AR	Local government	No	Education facilities	Central Boilers	Natural gas	142.55	-	1,153.00	-	-	-	-	29.31	-	2010	-	-	RBG	No		Greenwich	Estimated	BA 27/1/12
540576	175577	Wingfield Primary School	Moorhead Way	SE3 9XU	Local government	No	Education facilities	Central Boilers	Natural gas	104.73	-	2,625.00	-	-	-	-	21.53	-	2010	-	-	RBG	No		Greenwich	Actual	BA 27/1/12
542377	178683	Woodhill Primary School	Woodhill	SE18 5JE	Local government	No	Education facilities	Central Boilers	Natural gas	414.94	-	2,856.00	-	-	-	-	85.30	-	2010	-	-	RBG	No		Greenwich	Actual	BA 27/1/12
540105	177623	Woodlands Art Gallery	90 Mycenae Road, London	SE3 7SE	Private	No	Museums & Art Galleries			-	-	-	-	-	-	-	-	-	-	-	-	No		Greenwich			
543492	178724	Woolwich Centre	35 Wellington Street	SE18 6HQ	Local government	Yes	Local government estate	Central Boilers	Natural gas	3,600.00	-	-	-	-	-	-	-	-	-	-	-	RBG	No		Greenwich	Estimated	BA 1/2/12

OXS	OYS	Name	Address	Postcode	Ownership	New Development	Typology	Heating supply	Fuel source	Fuel consumption: all assets exc. CHP (MWh/yr)	Fuel consumption: CHP (MWh/yr)	Gross internal floor area (m2)	Number of dwellings	Installed thermal capacity: all assets exc. CHP (MWth)	CHP installed electrical capacity (MWe)	CHP installed thermal capacity (MWth)	CO2 emissions (tCO2/yr)	Year of Construction	Year of data collection	Start date	Completion date	Data Source	Confidentiality of data	Attach file	Borough	Real or estimated data?	Notes
543314	177722	Woolwich Common Community Centre	16 Leslie Smith Square	SE18 4DW	Local government	No	Other public buildings	Central Boilers	Natural gas	319.03	-	770.00	-	-	-	-	-	-	2010	-	-	RBG	No		Greenwich	Actual	BA 27/1/12
543129	177696	Woolwich Common Community Centre	16 Leslie Smith Square	SE18 4DW	Local government	No	Education facilities	Central Boilers	Natural gas	319.03	-	770.00	-	-	-	-	-	-	-	-	-	RBG	No		Greenwich		BA 1/2/12
543243	177821	Woolwich Common Estate	Woolwich Common	SE18	Local government	No	Private residential (> 149 units or 9,999 m2)	Central Boilers	Natural gas	8,783.86	-	-	-	-	-	-	-	-	2010	-	-	RBG	No		Greenwich	Actual	ADDED 3/2/12
542503	179153	Woolwich Dockyard Day Centre	88 Antelope Road	SE18 5QG	Local government	No	Local government estate	Central Boilers	Natural gas	220.77	-	814.00	-	-	-	-	45.39	-	2010	-	-	RBG	No		Greenwich	Actual	ADDED 1/2/12
542589	179247	Woolwich Dockyard Estate	Woolwich Church Street	SE18 5NN	Local government	No	Private residential (> 149 units or 9,999 m2)	Central Boilers	Natural gas	8,029.87	-	-	196	-	-	-	-	-	2010	-	-	RBG	No		Greenwich	Estimated	BA 3/2/12
543249	179238	WOOLWICH FERRY OFFICES		SE18 6DX	Other public	No	Local government estate	Wet system: Temp. assumed to be 21deg C	Wet system: Temp. assumed to be 21deg C	700.46	-	2,579.00	-	-	-	-	-	-	-	-	-	Borough Heat Loads	No		Greenwich		OPERATED BY TFL/SERCO
542937	179004	WOOLWICH FIRE STATION	24 SUNBURY STREET	SE18 3BT	Other public	No	Fire stations	Individual boilers	Natural gas	288.52	-	946.30	-	0.25	-	-	-	1887	2009	-	-	Meters	No		Greenwich		
546432	180397	Woolwich Polytechnic Secondary School	Hutchins Road	SE28 8AT	Local government	No	Education facilities	Central Boilers	Natural gas	1,137.26	-	9,433.00	-	-	-	-	233.80	-	2010	-	-	RBG	No		Greenwich	Estimated	BA 27/1/12
543436	178756	Woolwich Town Hall	Wellington Street	SE18 6PW	Local government	No	Local government estate	Central Boilers	Natural gas	1,499.24	-	5,343.00	-	-	-	-	308.21	-	2010	-	-	RBG	No		Greenwich	Estimated	BA 27/1/12
543916	173227	Wyborne Primary School	Footscray Road	SE9 2EH	Local government	No	Education facilities	Central Boilers	Natural gas	398.82	-	3,105.00	-	-	-	-	81.99	-	2010	-	-	RBG	No		Greenwich	Actual	BA 27/1/12
542630	174336	YARDLEY COURT HOTEL	COURT YARD, LONDON	SE9 5PZ	Private	No	Hotels (> 99 units or 4,999 m2)			-	-	-	-	-	-	-	-	-	-	-	-	-	No		Greenwich		
543587	178870	1 GREEN'S END LONDON	1 GREEN'S END LONDON	SE186HX	Private	No	Private residential (> 149 units or 9,999 m2)			-	-	-	96	-	-	-	-	-	2012	-	-	-	No		Greenwich		
544682	179291	10 WHINCHAT ROAD LONDON	10 WHINCHAT ROAD LONDON	SE280DZ	Private	No	Private residential (> 149 units or 9,999 m2)			-	-	-	92	-	-	-	-	-	2012	-	-	-	No		Greenwich		
537823	177465	51 NORMAN ROAD LONDON	51 NORMAN ROAD LONDON	SE109QB	Private	No	Private residential (> 149 units or			-	-	-	79	-	-	-	-	-	2012	-	-	-	No		Greenwich		

OXS	OYS	Name	Address	Postcode	Ownership	New Development	Typology	Heating supply	Fuel source	Fuel consumption: all assets exc. CHP (MWh/yr)	Fuel consumption: CHP (MWh/yr)	Gross internal floor area (m2)	Number of dwellings	Installed thermal capacity: all assets exc. CHP (MWe)	CHP installed electrical capacity (MWe)	CHP installed thermal capacity (MWth)	CO2 emissions (tCO2/yr)	Year of Construction	Year of data collection	Start date	Completion date	Data Source	Confidentiality of data	Attach file	Borough	Real or estimated data?	Notes
							9,999 m2)																				

A1.2 Major Heat Supply Plants

OXS	OYS	Name	Plant Address	Postcode	Ownership	New development	Typology	Fuel source	Fuel consumption: all assets inc. CHP (MWh/yr)	Heat generation: all assets inc CHP (MWh/yr)	Installed thermal capacity: all assets inc. CHP (MWth)	Installed power: all assets inc CHP (MWe)	CO2 emissions (tCO2/yr)	Date of Construction	Year of data collection	Start date	Completion date	Data source	Confidentiality of data	Attach file	Borough	Real or estimated data?	Notes
544197	178345	Claymill House	50 Raglan Road	SE18 7HX	Local government		No	CHP Site	Natural Gas	-	0.14	-	0.09	-	-	-	-	-		No		Greenwich	
544730	178613	River Heights	177-359 Glyndon Road	SE18 7NX	Local government		No	CHP sites	Natural Gas	-	0.14	-	0.09	-	-	-	-	-		No		Greenwich	
543339	179252	Waterfront Leisure Centre	Woolwich High Street	SE18 6DL	Local government		No	CHP sites	Natural Gas	-	-	0.16	0.26	-	-	-	-	-		No		Greenwich	
539343	179076	EA-ETCO2-0551	Tate & Lyle UK Limited Tunnel Refineries Thames Bank House Tunnel Avenue Greenwich London SE10 OPA	SE10 0PA	Amylum UK Limited		-	EUETS sites	-	-	-	-	-	120,585.00	-	-	-	-		No		Greenwich	
538932	178035	EA-ETCO2-0237	Greenwich Generating Station Old Woolwich Rd Greenwich London SE10 9NY	SE10 9NY	EDF Energy Powerlink Ltd		-	EUETS sites	-	-	-	-	-	9,257.00	-	-	-	-		No		Greenwich	
543537	178684	Love Lane	Love Lane, Woolwich New Road and Wellington Street	SE18 6HQ	Private		Yes	CHP Site	Natural Gas	-	-	-	0.38	-	-	-	-	-		No		Greenwich	
539102	178437	Lovells Wharf	Pelton Road	SE10	Private		Yes	CHP Site	Natural Gas	-	-	-	0.05	-	-	-	-	-		No		Greenwich	
537864	177820	Greenwich Reach East	Creek Road	SE10	Private		Yes	CHP Site	Natural Gas	-	-	-	0.34	-	-	-	-	-		No		Greenwich	
543081	174513	Eltham Centre	2 Archery Road	SE9 1HA	Local government		No	CHP Site	Natural Gas	3,795.43	0.10	-	0.07	-	-	2010	-	-	RBG	No		Greenwich	Actual
543764	179135	The Warren	Royal Arsenal	SE18	Private		No	CHP Site	Natural Gas	-	-	0.16	0.13	-	-	-	-	-		No		Greenwich	
540221	174895	Ravens Way 130-184	130-184 Ravens Way	SE12 8EZ	Local government		No	CHP Site	Natural Gas	601.27	-	0.02	0.01	-	-	2010	-	-	RBG	No		Greenwich	Estimated
539601	178180	Heart of East Greenwich	Vanbrugh Hill / Woolwich Road	SE10 9HE	Local government		Yes	CHP Site	Natural Gas	-	-	-	-	-	-	-	-	-		No		Greenwich	

537780	177489	Hilton's Wharf	30 - 52 Norman Road	SE10 9QX	Private		Yes	CHP Site	Natural Gas	-	-	0.04	0.03	-	-	-	-	-		No		Greenwich	
545841	180816	Tripcock Point	Thamesmead	SE28	Private		Yes	CHP Site	Natural Gas	-	-	-	-	-	-	-	-	-		No		Greenwich	
538179	191761	ALDRICHE WAY	-	-	-		-	CHP sites	-	-	-	0.19	0.46	-	-	-	-	-		No		Greenwich	
544197	178345	CLAYMILL & CONGLETON TOWERS	-	-	-		-	CHP sites	-	-	-	0.18	0.30	-	-	-	-	-		No		Greenwich	
533605	181788	BISHOPSGATE POOL	-	-	-		-	CHP sites	-	-	-	0.17	0.28	-	-	-	-	-		No		Greenwich	
539343	179076	AMYLUM UK LTD	-	-	-		-	CHP sites	-	-	-	17.60	28.85	-	-	-	-	-		No		Greenwich	
538896	178104	Greenwich Power Station	-	SE10 9NY	EDF Energy Powerlink Ltd		-	Power Plant	-	-	-	-	-	9257	-	-	-	-	-	No		Greenwich	

A2 London Heat Map Heat Load Typologies

The London Heat Map categorises heat loads in accordance with the previous DEMaP database provided by the LDA.

The London Heat Map's categories are listed below:

- [Residential] Multi-Address buildings (>49 per building)
- Sport & Leisure Facilities
- Prisons
- Hotels (>99 units or 4,999m²)
- Educational Facilities
- Police Stations
- Fire Stations
- NHS
- Museums and art galleries
- Central government estate
- Local government estate
- Religious Buildings
- Private residential units (>149 units or 9,999m²)
- Private commercial units (>9,999m²)
- Social Housing Estate
- Other Public Buildings

Buildings with small loads have not been included in this categorisation. This is because their thermal demand is considered big enough to influence the potential of identifying a district heat network opportunity.