

Materials and Technical Details

Kirkmichael Road Planting Typology



Pyrus Chanticleer



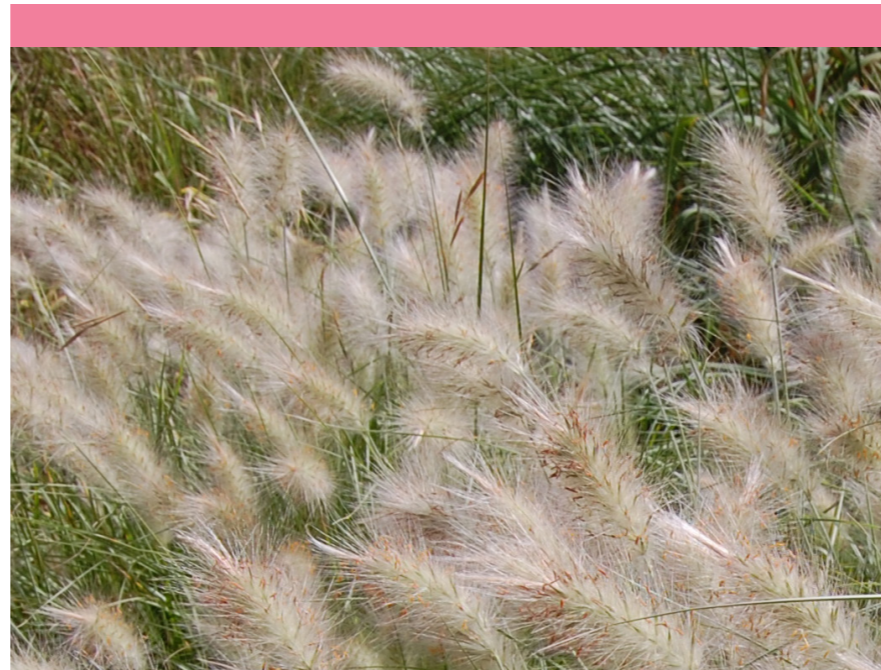
Rosmarinus officianalis (vars)



Salvia argentea



Miscanthus sinensis Morning Light



Pennisetum villosum



Hydrangea petiolaris

Materials and Technical Details

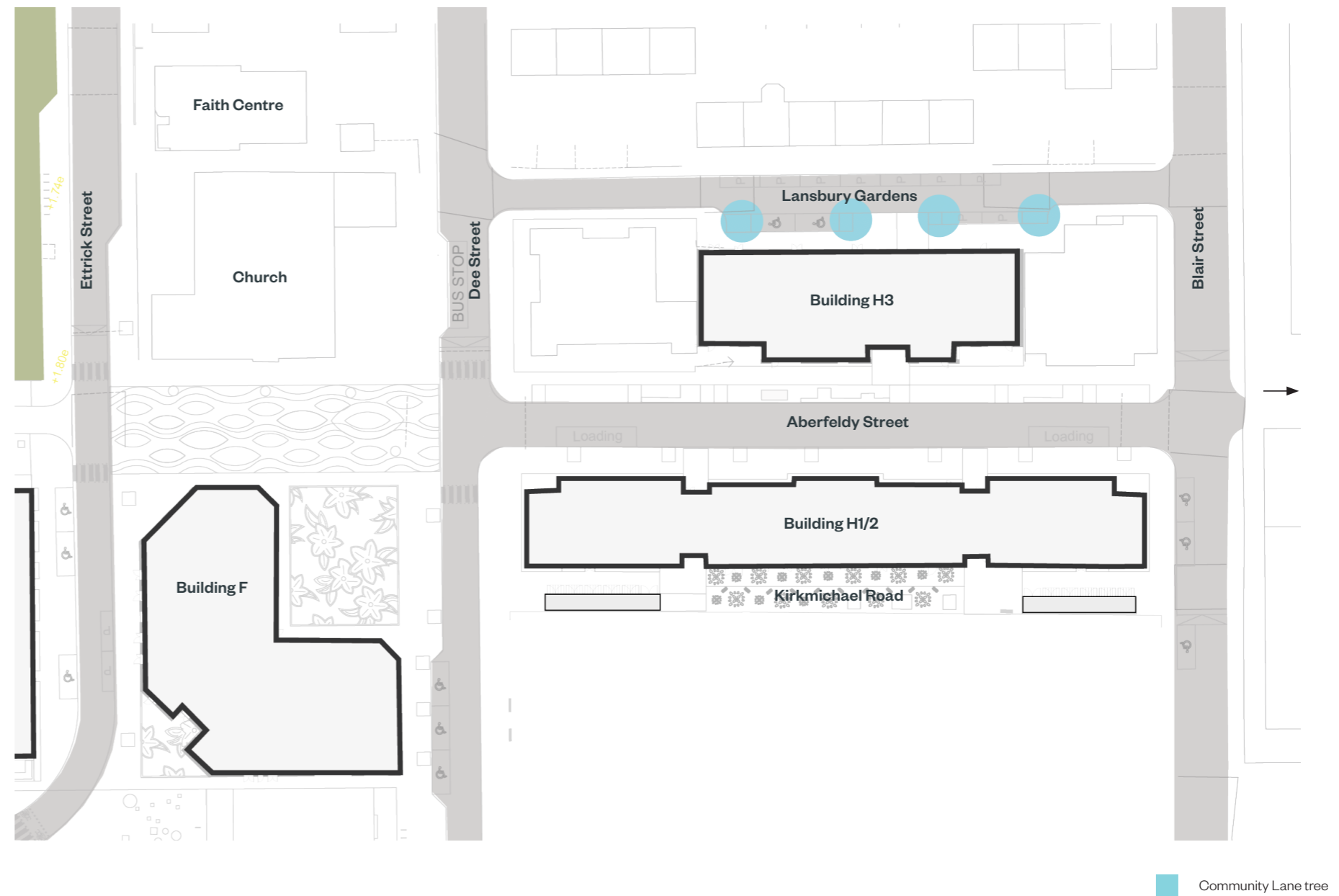
Illustrative Planting Typologies Plots F and H

Lansbury Gardens

Planting in Lansbury Gardens is elegant and functional, upright trees with white blossoms are selected, which echoes to the colours of planting palette in Aberfeldy Street.

Trees

- Prunus padus
- Pyrus Chanticleer



Planting Typologies diagram - Lansbury Gardens

Materials and Technical Details

Lansbury Gardens Planting Typology



Prunus padus



Pyrus Chanticleer

Materials and Technical Details

Illustrative Planting Typologies

Plots F and H

Roof Terraces

The planting on amenity roof terraces is designed to offer a tranquil, relaxing, and welcome atmosphere with seasonal interest, textures and scents, which not only invite residents to utilise the roof terraces for various activities but also maximising their well-being, bring nature closer in this metropolitan living environment.

Trees

- Acer campestre
- Betula nigra
- Cornus kousa

Shrubs

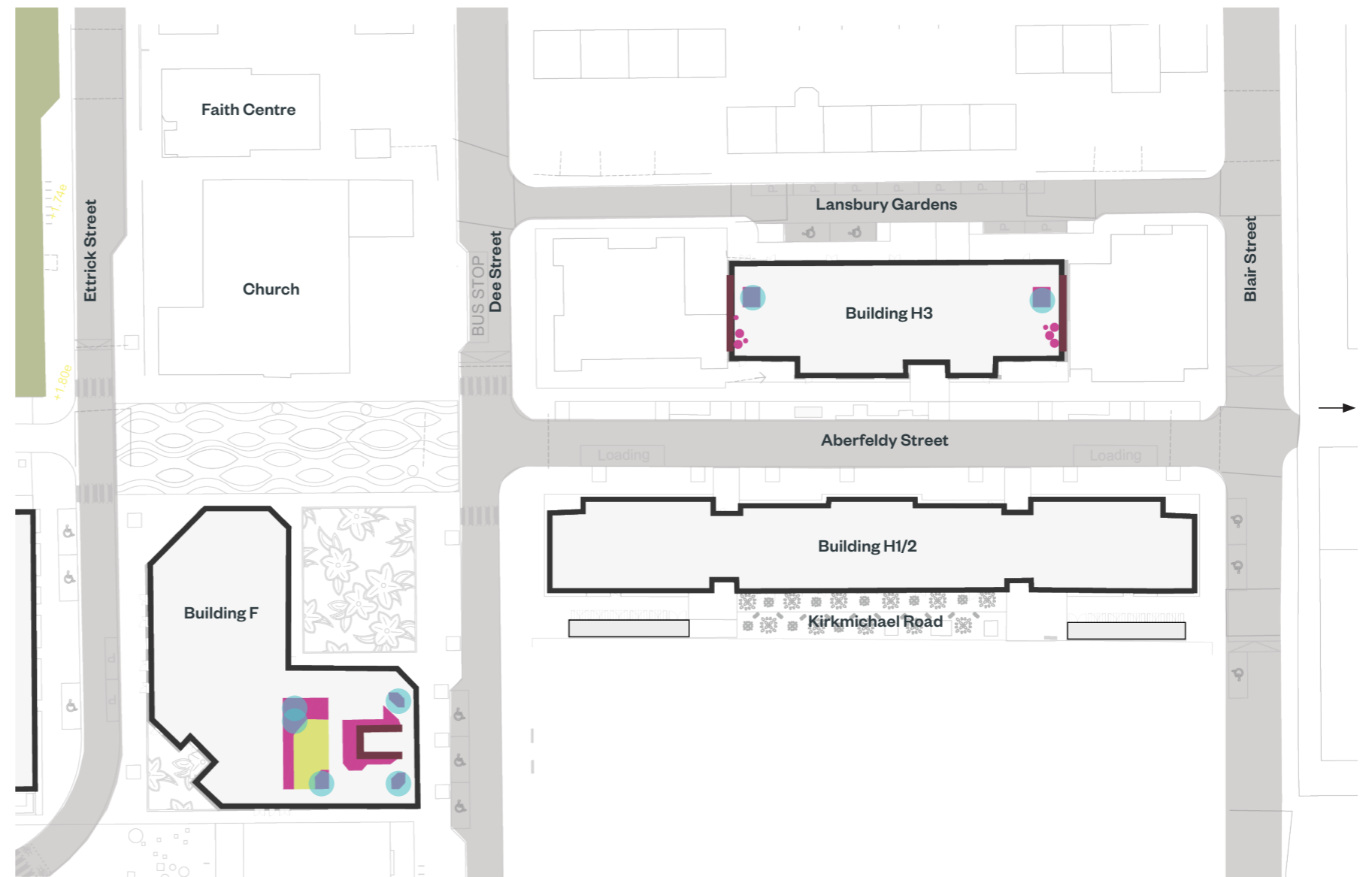
- Sarcococca hookeriana digyna

Herbaceous perennials

- Lavandula angustifolia 'Hidcote'
- Deschampsia cespitosa
- Rosmarinus officinalis 'Prostratus'
- Astrantia 'Major Claret'
- Luzula nivea

Climbers

- Trachelospermum jasminoides

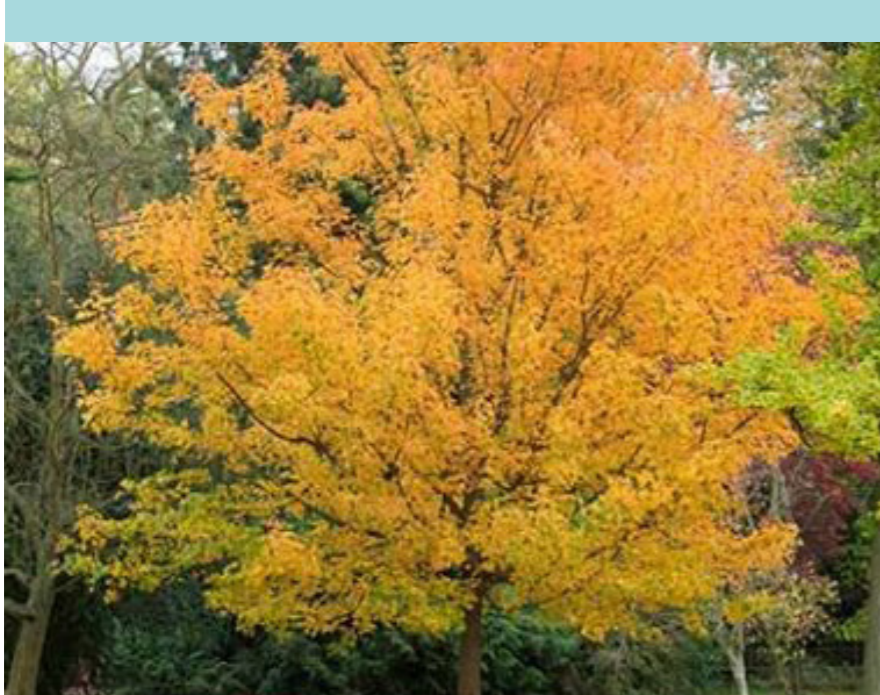


Planting Typologies diagram - Roof Terraces Plots F and H

- Podiums and roof terrace tree (small)
- Amenity lawn area
- Ornamental shrub, grass and perennial planting mix
- Climbing planting mix

Materials and Technical Details

Roof Terraces Plots F and H Planting Typology



Acer campestre



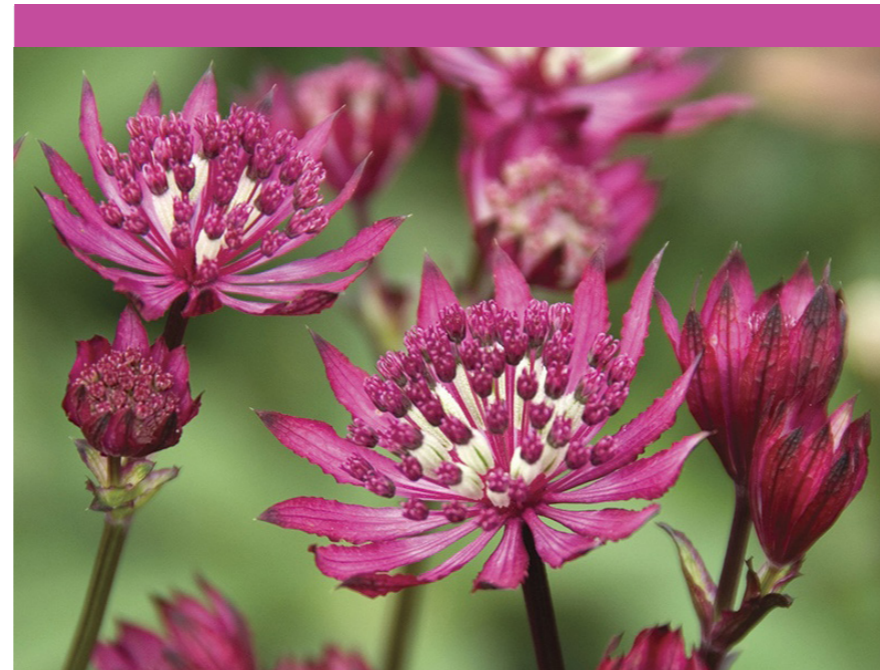
Cornus kousa



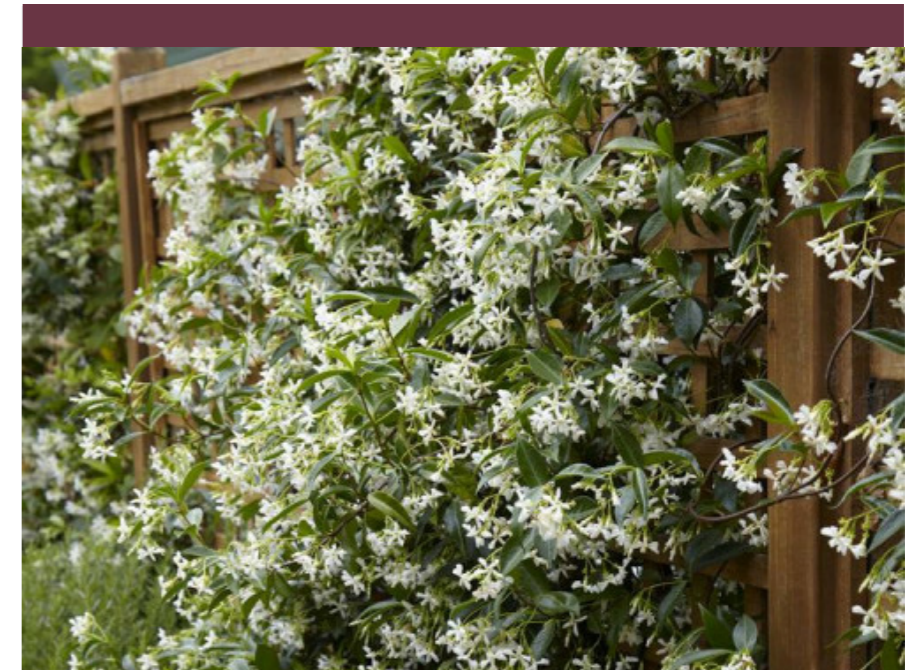
Sarcococca hookeriana digyna



Lavandula angustifolia 'Hidcoote'



Astrantia 'Major Claret'



Trachelospermum jasminoides

Materials and Technical Details

Lighting

The lighting concept provides baseline levels of light for safety and key routes. In the F and H plot lighting is also very important to creating atmosphere and a comfortable quality, with highlights that articulate the public spaces and reinforces the concepts and hierarchy of spaces. People should feel interested and invited to come and linger after the hours of darkness.

Catenary lighting proposed in Aberfeldy Street eliminates street level clutter, allows the lights to be located over the carriageway, as column lighting might be obscured by canopies of the trees. The wires can support different interventions such as seasonal lighting or celebration/ branding banners that further enliven and characterise the street.

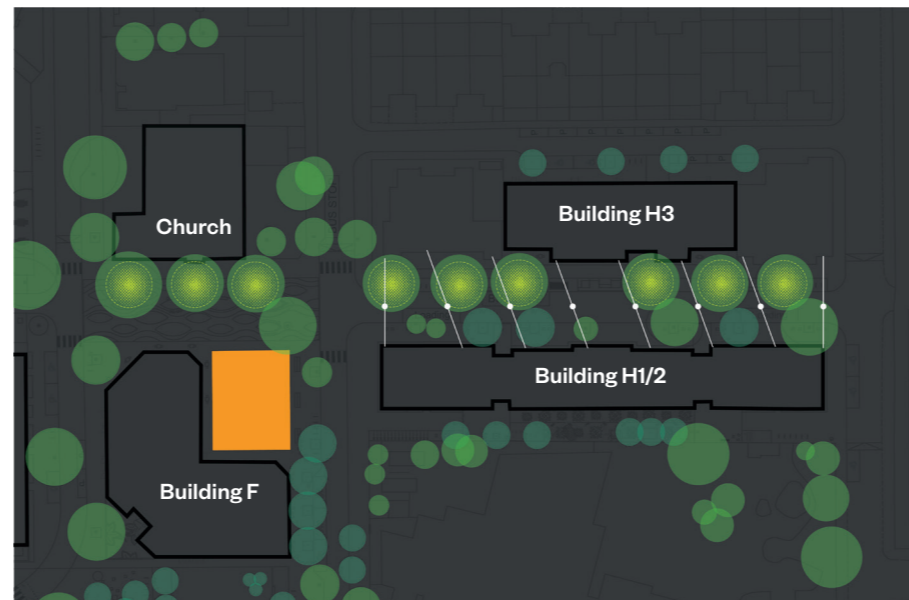
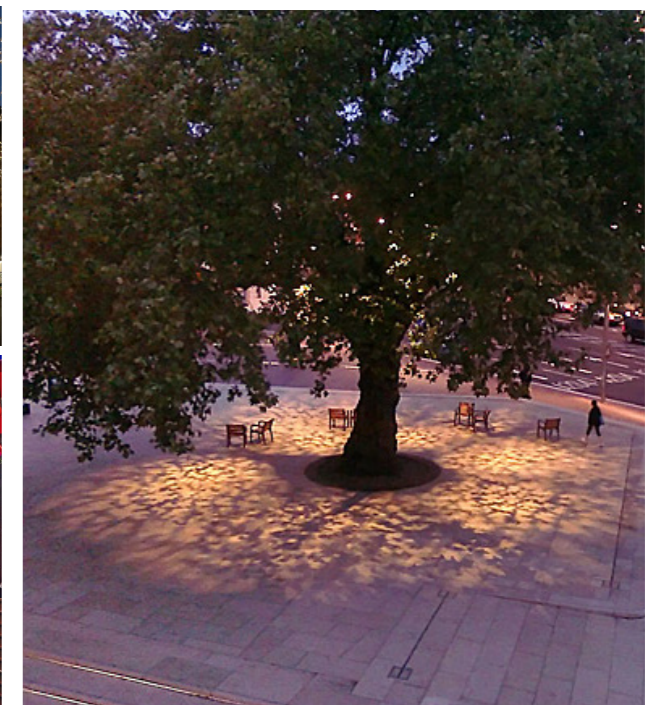
Gobo projections from the trees on the eastern side of the street would project naturalistic patterns onto the footpath along that side of the road. These would be particularly visible from the northern and southern parts of Aberfeldy Street connecting and encouraging movement between these spaces.

Highlighting structures and furniture with light would include the play structure in Town Square which sits on the axis of Aberfeldy Street. It will become more prominent at night when lit and provides a focal point on the axis of the street.




The general lighting of Town Square to safe standards would be from fittings attached to the building. Gobo projections would illuminate the precise space of the neighbourhood square with bold colourful patterns in response to its primacy within the hierarchy of spaces in the street.



NIGHT TIME-CREATING A SAFE



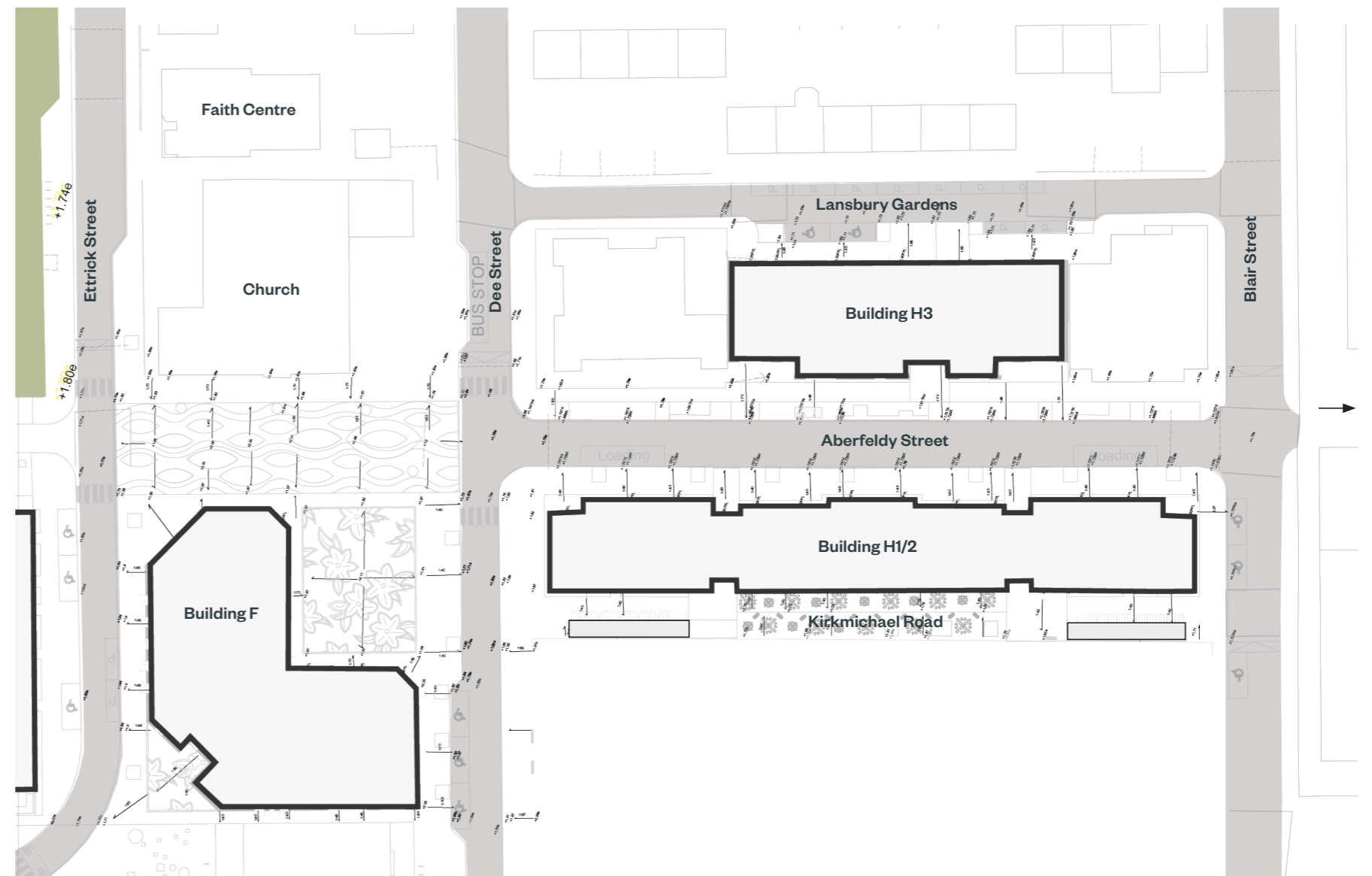
Lighting Strategy diagram - Town Square and Aberfeldy Street

-  Catenary light
-  Nature pattern
-  Colourful paving projection



Materials and Technical Details

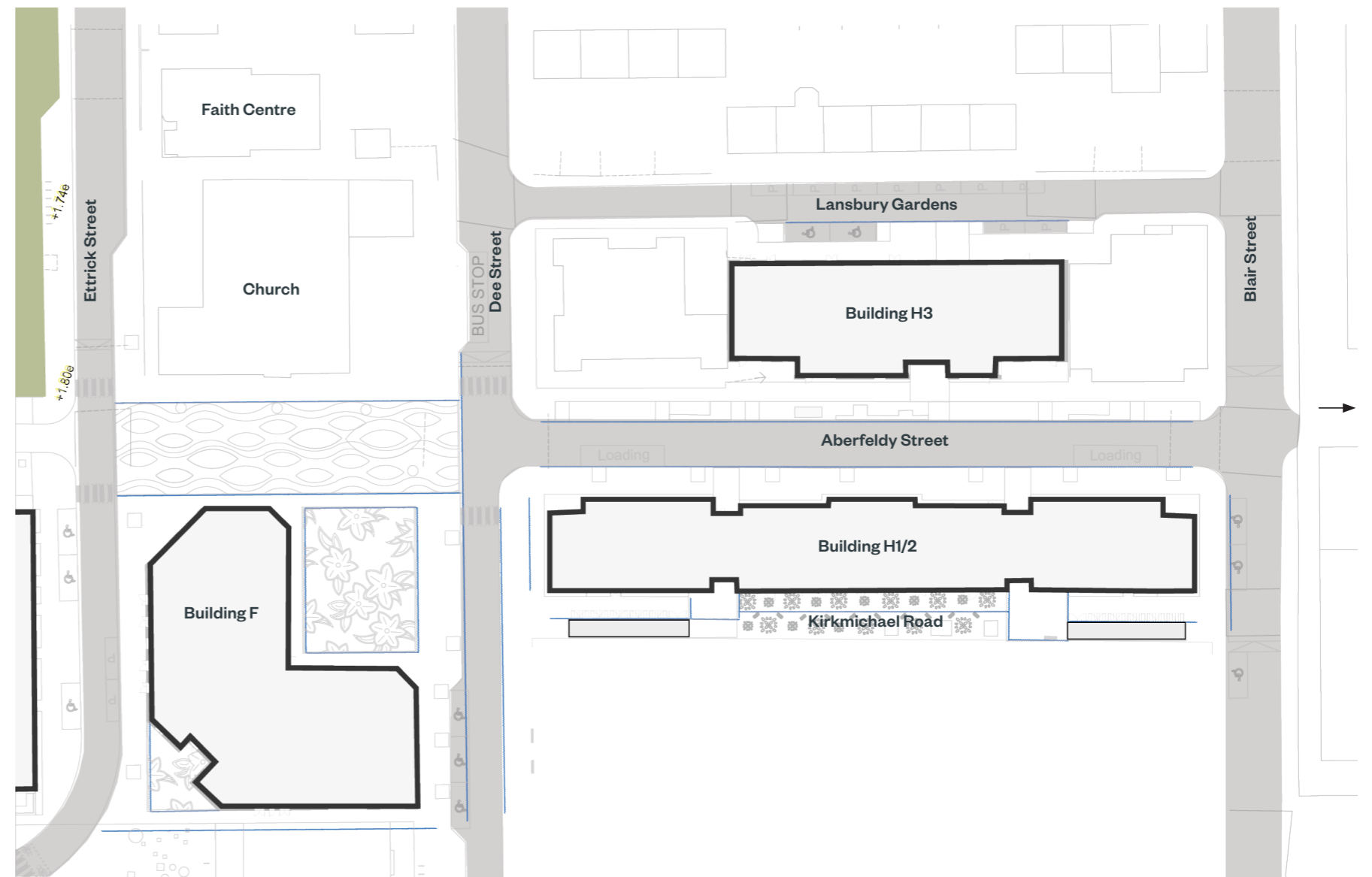
Generally, the proposed levels of paving will be the same as existing footpaths and carriageway and particularly around existing trees and following the existing highway kerb.



Levels diagram

Materials and Technical Details

The drainage of the streets and square would aim to reuse the existing drainage infrastructure with modified connections.



Drainage diagram

■ Slot drain/ gully/ open channel as required