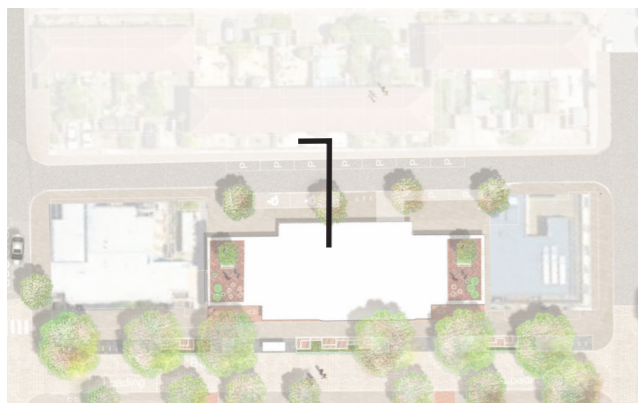
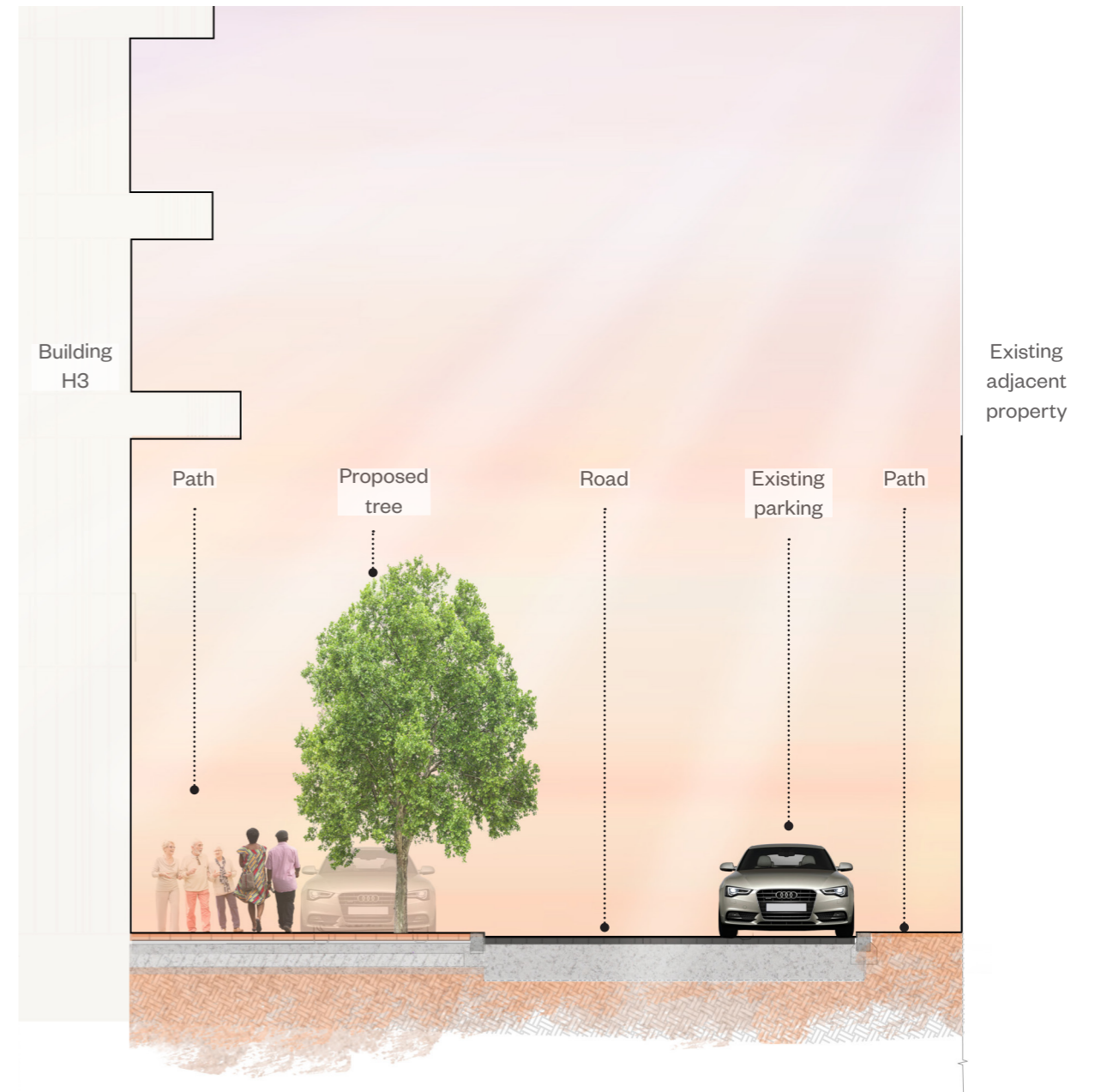


The Residential Street - Lansbury Gardens

Proposals for Lansbury Gardens



Location Plan



Illustrative Cross Section

Roof Terraces for F and H3

The Life of the Roof Terraces

There will be a variety of activity on the roof terraces that reflects the broad range and diversity of residents that will use the private communal space for: relaxation, fresh air, sunbathing, eating, playfulness (although not part of formal play allowance), exercise, contemplation, growing, work (especially with hybrid working becoming more common), small gatherings or events.

A variety of scale of spaces and character would be provided within each roof terrace to meet diverse needs and interests. Common wi-fi would be provided to encourage and facilitate this.

Direct views are encouraged across the surrounding area to help residents understand their place – connect them to their neighbourhood e.g., Balfron, Town Square, distant views to the east or Canary Wharf.

The different time of day that sunlight lands on the space influences the use. The mornings designed for coffee and breakfast, elevenses, lunch, relaxing in the afternoon, post-school children's fun space, evening space for post-work drinks.



Roof Terraces for F and H3

The Proposals for The Roof Terraces - General

The hard and soft surfaces are balanced. Hard surfaces for circulation, formal activity but they have texture and interest. Soft surface, grass, provides informal/relaxation and also provides a flexible multifunctional space.

The planting will have variety, texture, seasonality, and flowers. The wellbeing benefits will be maximised by making planting as visible as possible. The roof terraces encourage biodiversity and contact with nature and would include wildlife installations, bird baths and bird feeding stations to encourage interest and engagement with nature and its benefits.

Spaces will mostly be looked down on from surrounding apartments and so will look good and interesting from above.



Roof Terraces for F and H3

Building F Roof Terrace

The smoke extractor determines the organisation of the space. It is proposed to surround the extractor with a planting bed and an open patterned metal mesh to about 1.8 m high which would be topped with a slim metal pergola. The screen and the pergola would be covered in climbers and provide a green setting for the roof terrace. This would also be visible from the street creating a green crown to the building.

The pergola structure creates a space on either side. Formal seating and tables on the eastern side for working, eating, and socialising that catches the morning sun. The western side has a built-in bench and space for loose furniture, with enough space for loungers, catching more of the afternoon sun.

Between these activity areas and the private residence is a proposed lawn with a hedge and raised planters providing a buffer between the private and communal space.

Individual semi mature multi-stemmed large shrubs/ small trees contain corners and control views out of the space.

Paving would be Dutch clay pavers to emphasise the residential character of the space and reference the wider masterplan public realm.

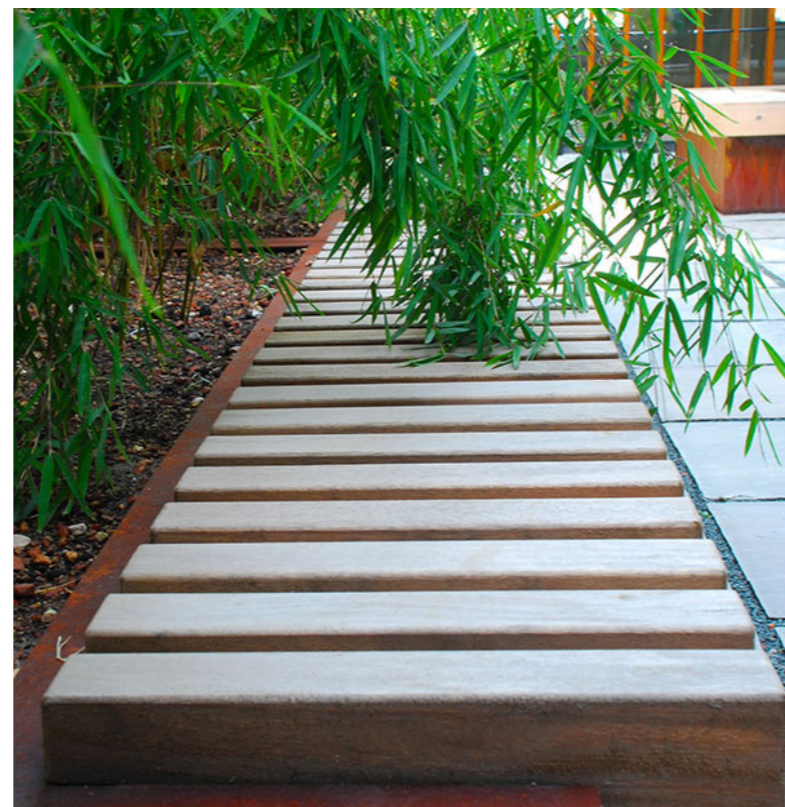
The planting, structures and furniture are located away from parapets so as not to compromise the safety enclosure and climb heights.



Illustrative Plan

Roof Terraces for F and H3

Building F Roof Terrace



Roof Terraces for F and H3

Building H3 Roof Terraces

The two small roof terraces on building H3 are arranged with a simple rectilinear raised planting bed set asymmetrically on the Lansbury Gardens side of the space. This creates a paved area overlooking Aberfeldy Street which emphasises the connection between the spaces. The paved area would be used for informal grouping of pot plants and loose furniture.

Paving would be Dutch clay pavers to enhance the residential feel.

The planting, structures and furniture are located away from parapets so as not to compromise the safety enclosure and climb heights.



3D Visualisation



Illustrative Plan

Roof Terraces for F and H3

Proposals for Building H3 Roof Terraces

