

The High Street – Aberfeldy Street

Proposals for Aberfeldy Street

Details

The furniture of Aberfeldy Street would be different from Town Square but would harmonise with it. The harmony would be through its materiality, metal and timber, as well as the same strong colour.

The furniture is deliberately playful and playable as well as functional, offering opportunities for a wide range of interests and ages, particularly the Terraced Planters: a place of rest, a place for social interaction, a place to hang out and a place to play.



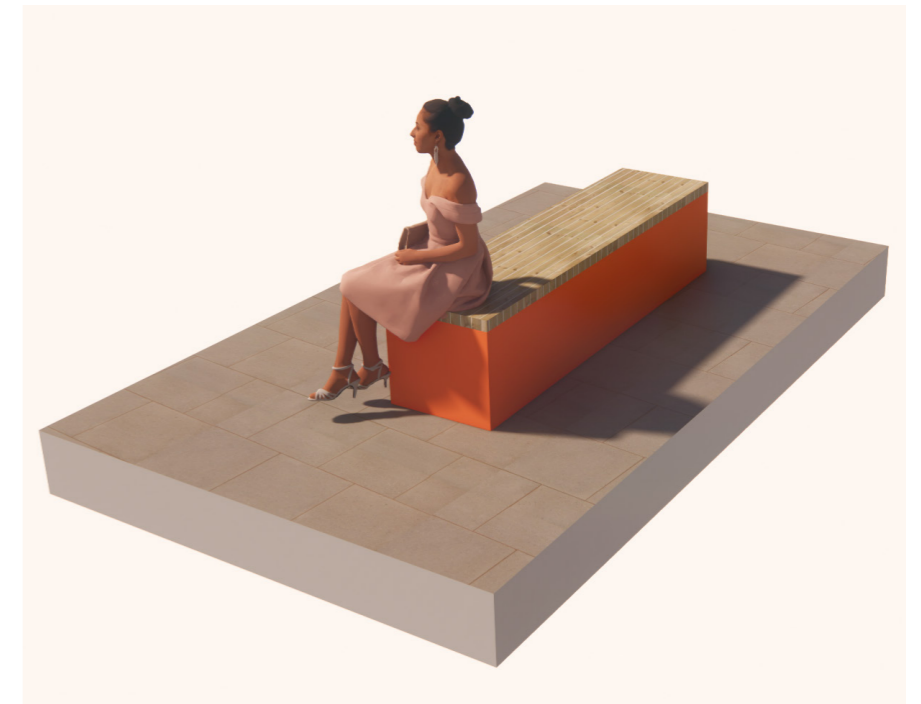
Terraced Planters



Cubes



Individual Seats



Bench

The Play Street - Kirkmichael Road

The Life of The Play Street

Culloden Primary School exits onto the southern end of Kirkmichael Road and at the end of the school day this will become a space where parents can linger and talk whilst children play in the safety of a car free street. Outside of these times The Play Street is a facility for the children of the area. It facilitates community.

It feels safe because there are good views along the Road from Town Square and building F. There is activation from residential, community amenity space and retail unit entrances. It is also overlooked from the residential units in H1/ 2 above.

In addition, it will be an attractive and generous pedestrian route north and south. It will connect to Community Lane, that will be delivered in the masterplan in future phases, as well as the east-west route to the Dee Street A12 underpass.



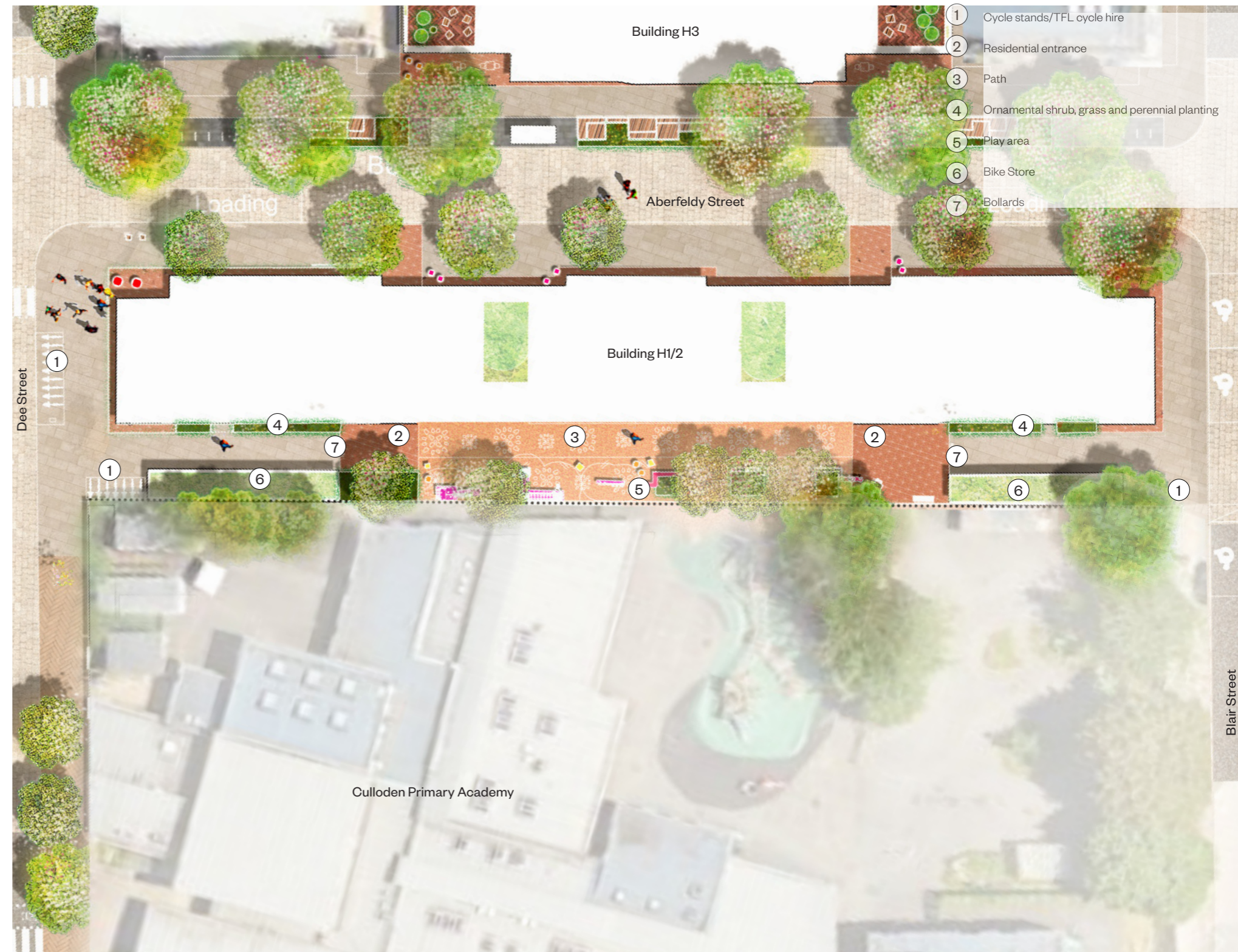
The Play Street - Kirkmichael Road

Spatial Organisation

The play and seating facilities are located in the central part of the street framed by the entrances to the residential entrances to building H1/ 2 and the school exit. Community amenity space entrances open out into the central play area at either end creating a strong inside/outside relationship. The side closest to the school is designated for seating and play equipment whilst the side adjacent to building H1/ 2 would be the footway and gives access to service doors and the community amenity space along the ground floor of that building. Bollards prohibit vehicle access to the play space, residential and school entrances.

Perfecta paving wraps around either end of building H1/ 2 and along the first 19m of Kirkmichael Road, providing continuity with Aberfeldy Street and a transition into Kirkmichael Road. Planting is located along the edges of the building, and it is combined with cycle parking and Santander bike stands along the boundary with the school in these arrival spaces. Covered long stay cycle stores are also situated at either end of the central play space. The cycle stores will be designed to have a playful facade and green roof and fit seamlessly into the playful character of the street.

The central play is organised with equipment arranged longitudinally along the street integrated with a long meandering seat and planting that characterises the space. There is selected spaces along the centre of the street for trees with upright canopies to fit into this relatively narrow space. The ground plane of the play area would be unified with a bright colourful pattern inspired by the kantha meanwhile project. This would be safety surface under the play equipment and colourful resinbound gravel under the footway to match.

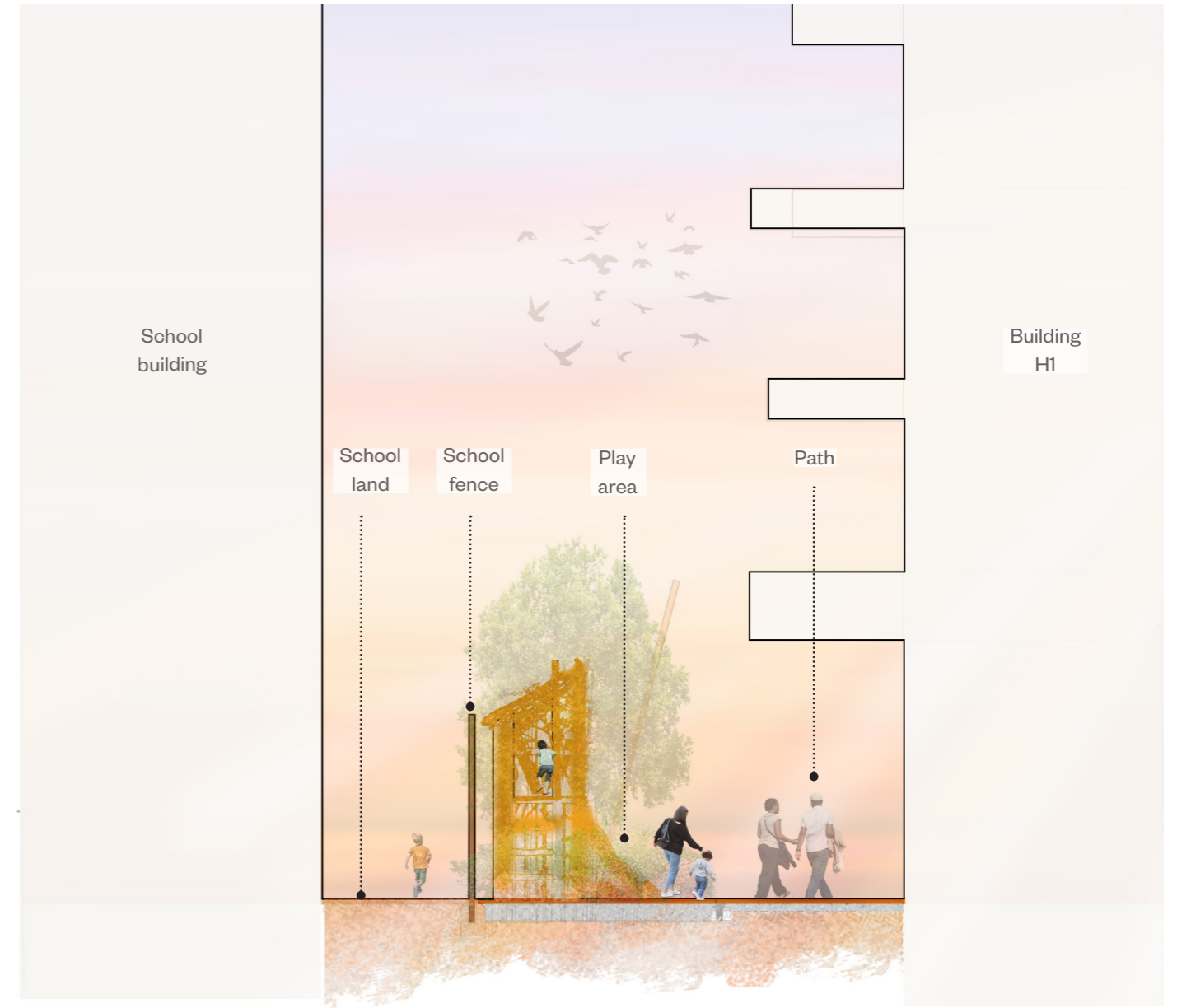


Illustrative Plan

The Play Street - Kirkmichael Road



Location Plan



Illustrative Cross Section