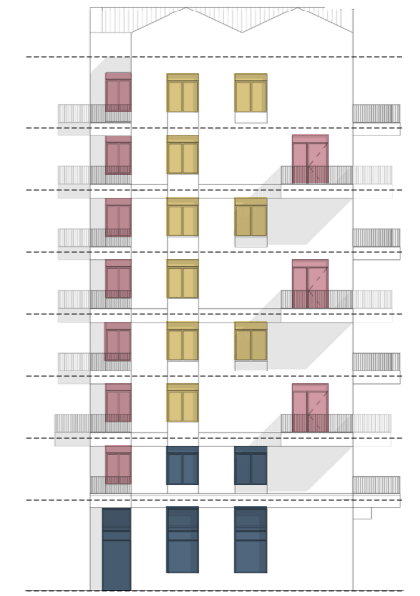


# Access + Maintenance

## Plot H1+2



West Elevation



South Elevation



East Elevation

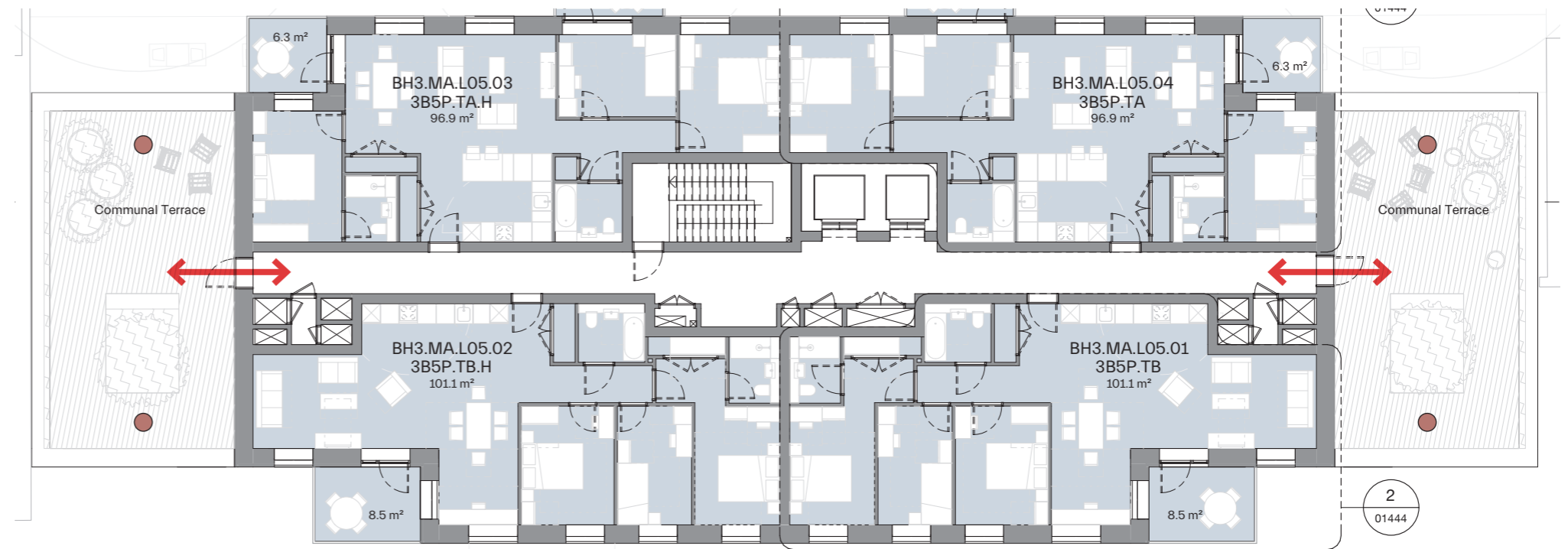
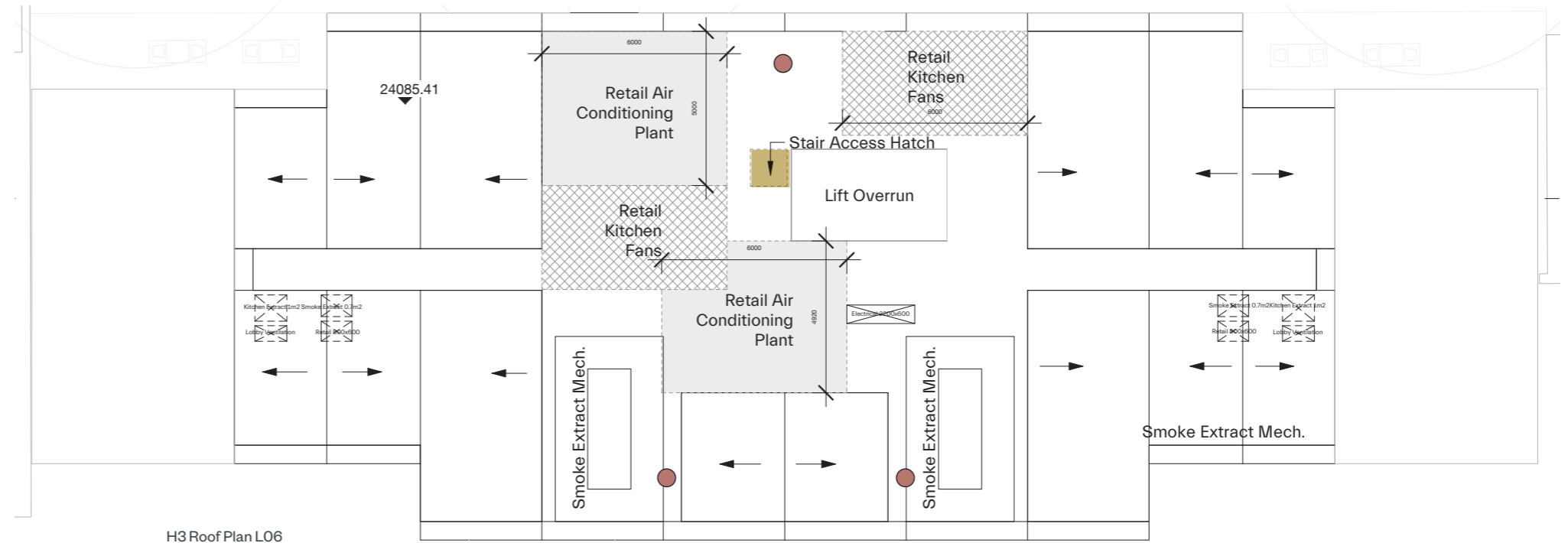


North Elevation

- Manual / Water fed long reach pole from street / communal terrace
- Abseil access from roof
- MEWP (Mobile Elevated Working Platform) from street
- Manual Clean from Private Amenity (balcony / terrace)

# Access + Maintenance

## Plot H3: Roof Plan

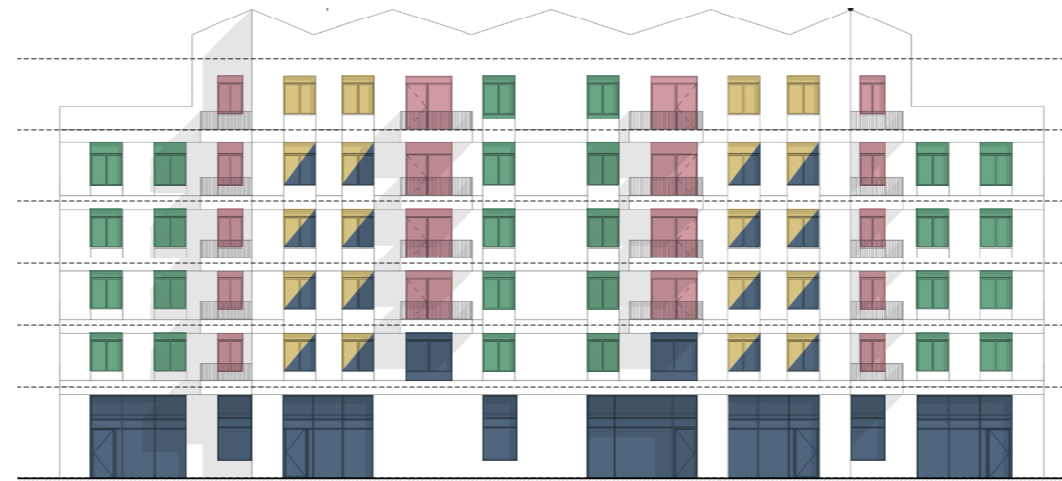


- Entrance / Exit Points
- Roof Hatch Access
- Rope Access Points
- PV's and Biosolar Roof



# Access + Maintenance

## Plot H3: Cleaning Strategy



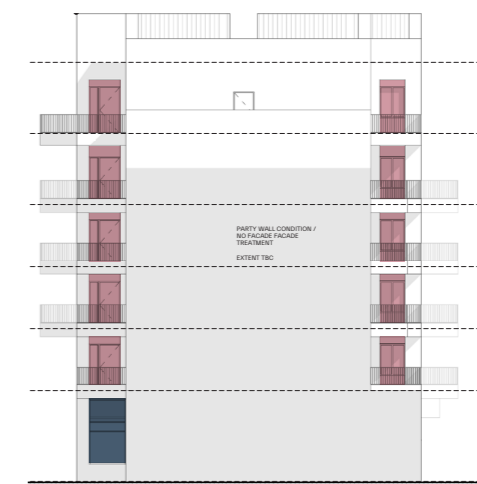
West Elevation



North Elevation



East Elevation

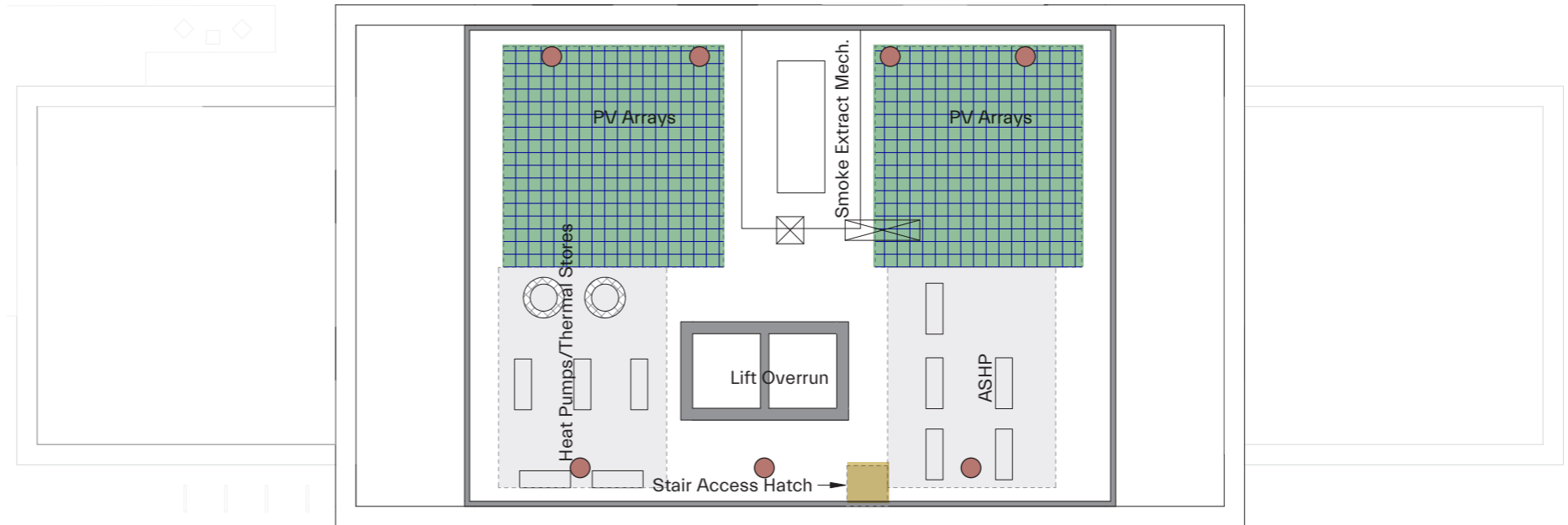


South Elevation

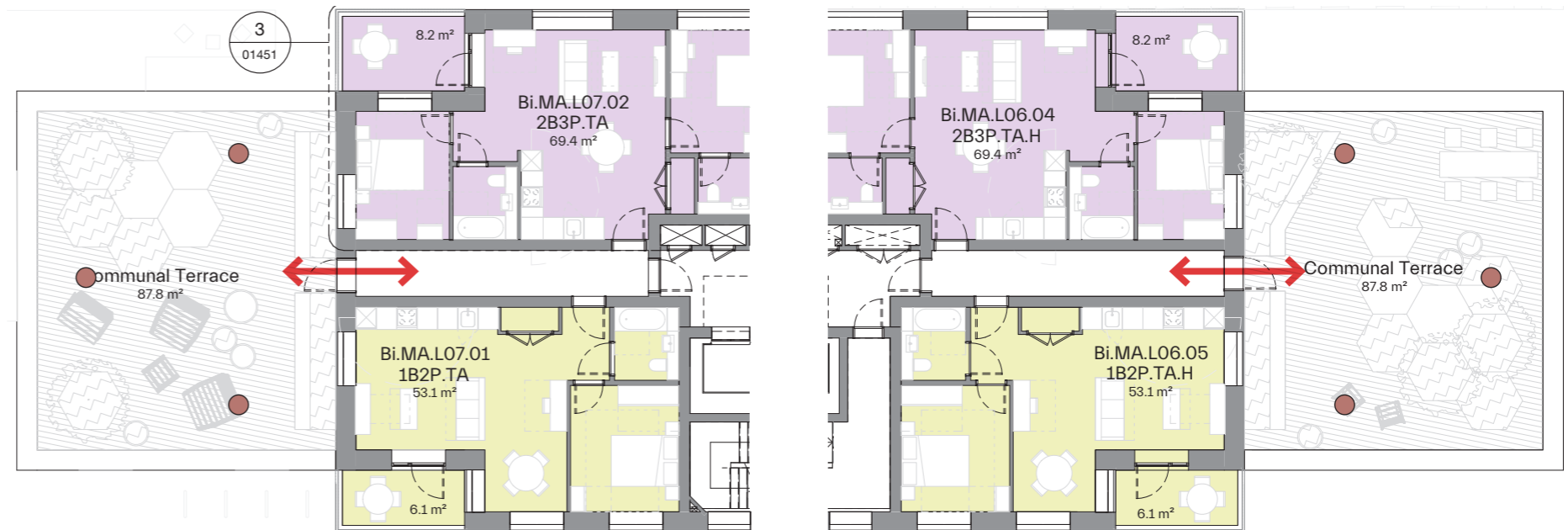
- Manual / Water fed long reach pole from street / communal terrace
- Abseil access from roof
- MEWP (Mobile Elevated Working Platform) from street
- Manual Clean from Private Amenity (balcony / terrace)

# Access + Maintenance

## Plot I: Roof Plan



L11 Roof Plan



L07 Roof Plan

L06 Roof Plan

- Entrance / Exit Points
- Roof Hatch Access
- Rope Access Points
- PV's and Biosolar Roof

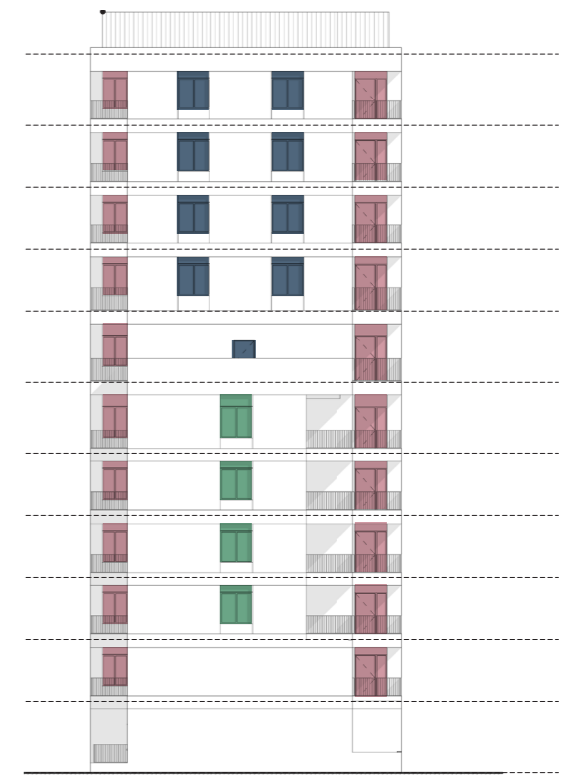


# Access + Maintenance

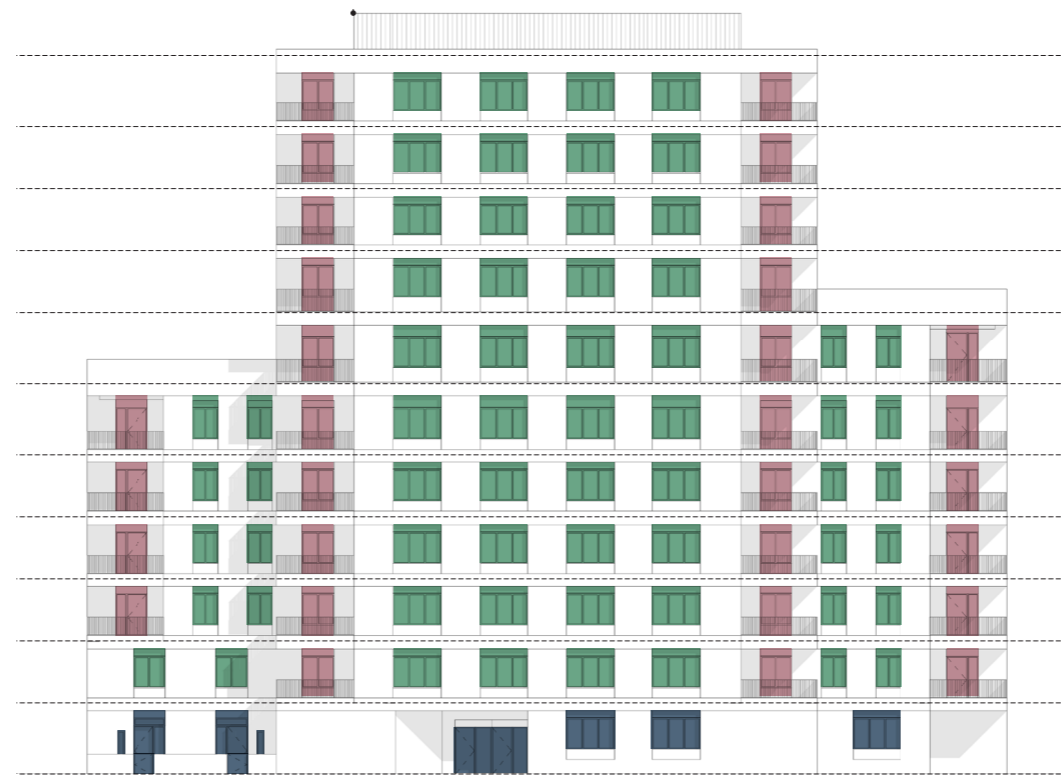
## Plot I: Cleaning Strategy



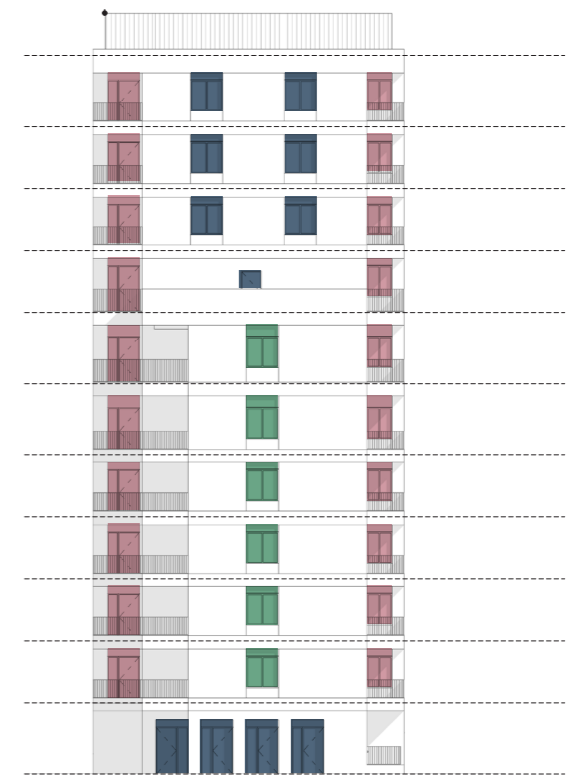
South Elevation



West Elevation



North Elevation



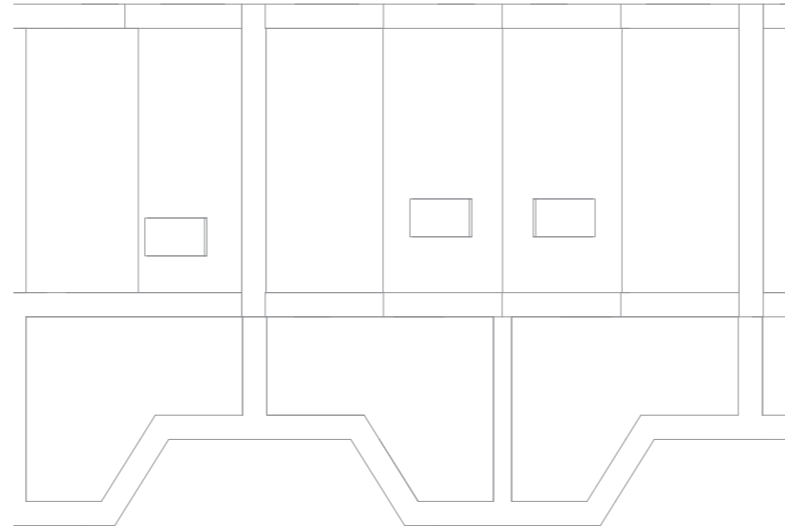
East Elevation

- Manual / Water fed long reach pole from street / communal terrace
- Abseil access from roof
- MEWP (Mobile Elevated Working Platform) from street
- Manual Clean from Private Amenity (balcony / terrace)

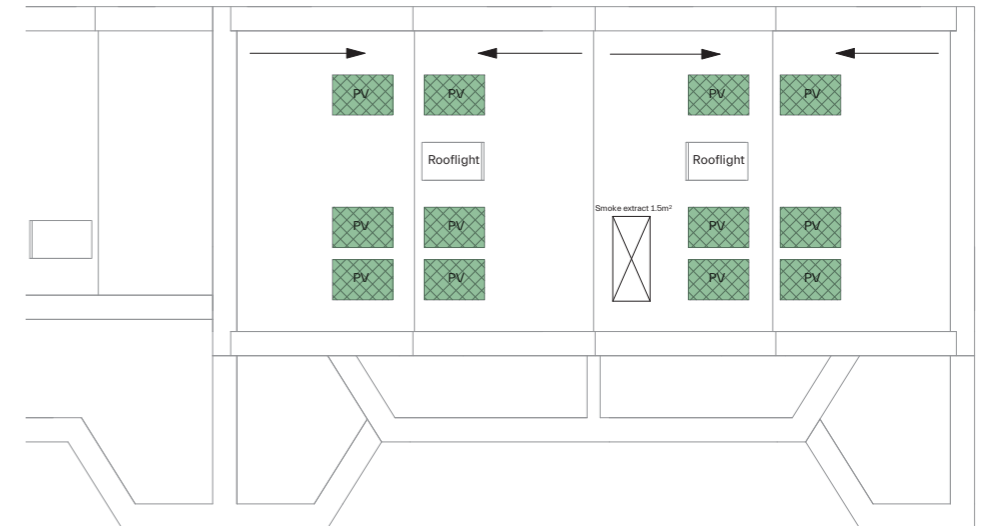
# Access + Maintenance

## Plot J: Roof Plan

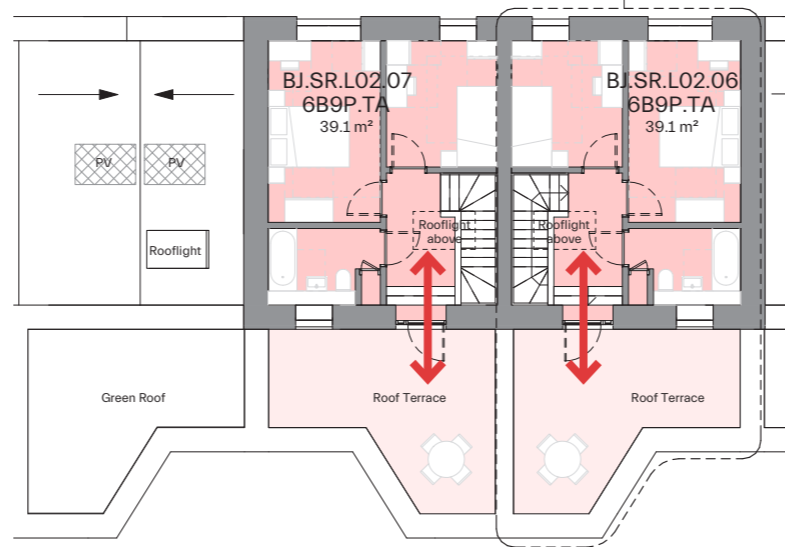
Due to the lower rise nature of this plot, immediate roof access from the internal demise has not been accommodated. In the event of required maintenance, specially trained operatives would establish access to the upper maisonette roof via MEWP. Suitable mansafe provision (or similar) will be accommodated to the roof extents for fall protection to mitigate the dangers of working at height. To the town houses, the majority of cleaning and maintenance will be possible from ground or terrace levels.



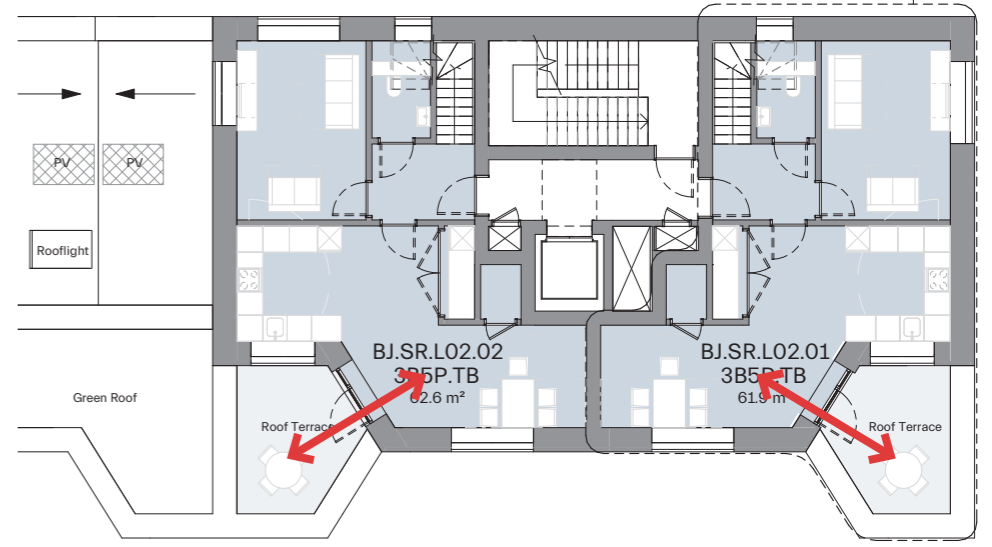
Plot J: Town House Roof Plan



Plot J: Maisonette Block Roof Plan



Plot J: Town House Typical L02 Roof Plan



Plot J: Maisonette Block L02 Terrace Plan

- Entrance / Exit Points
- Roof Hatch Access
- Rope Access Points
- PV's and Biosolar Roof

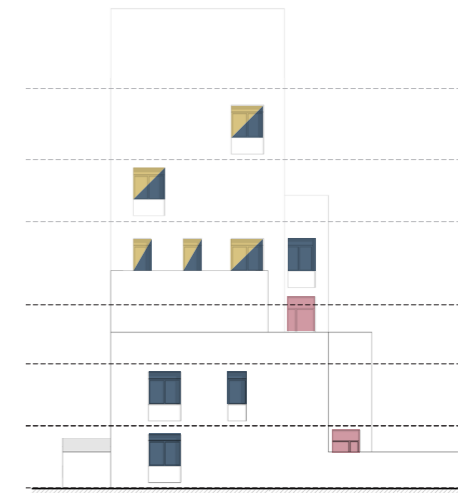


# Access + Maintenance

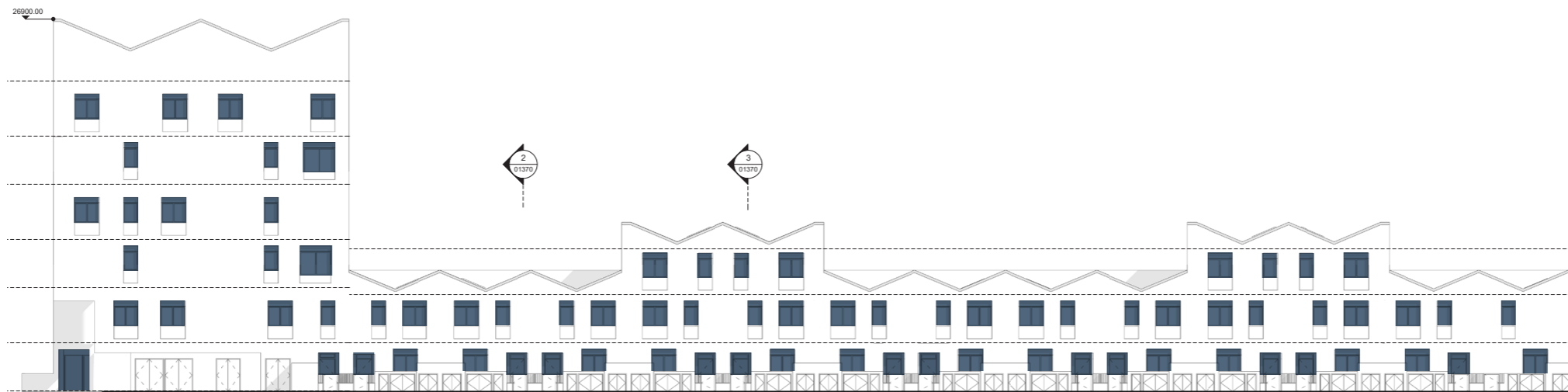
## Plot J: Cleaning Strategy



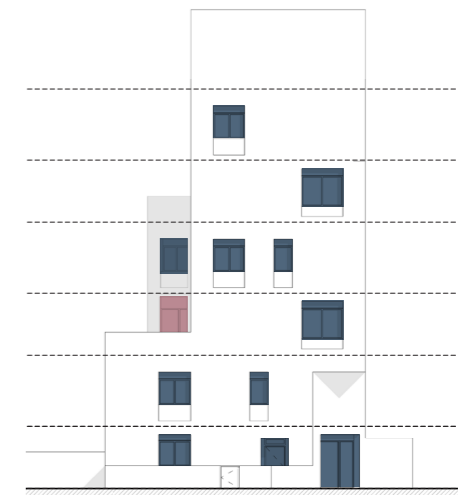
South Elevation



West Elevation



North Elevation



East Elevation

- Manual / Water fed long reach pole from street / communal terrace
- Abseil access from roof
- MEWP (Mobile Elevated Working Platform) from street
- Manual Clean from Private Amenity (balcony / terrace)

# 9

## **ACCOMMODATION SUMMARY**



# Accommodation Mix

## Phase A Summary

	Studio	1 Bed	2 Bed	3 Bed	4 Bed	6 Bed	No. of units	Hab Rooms
Social Rent	<u>00</u> 0%	<u>10</u> 11.76%	<u>24</u> 28.24%	<u>30</u> 35.29%	<u>17</u> 20.00%	<u>04</u> 4.71%	<u>85</u>	<u>376</u>
Intermediate	<u>0</u>	<u>01</u> 9.09%	<u>10</u> 90.91%	<u>0</u>	<u>0</u>	<u>0</u>	<u>11</u>	<u>32</u>
Market	<u>12</u> 6.63%	<u>70</u> 38.67%	<u>90</u> 49.72%	<u>09</u> 4.97%			<u>181</u>	<u>458</u>
<b>Total</b>	<u>12</u> (4.33%)	<u>81</u> (29.24%)	<u>124</u> (44.77%)	<u>39</u> (14.08%)	<u>17</u> (6.14%)	<u>04</u> (1.44%)	<u>277</u>	<u>866</u>

% Affordable (per HR)	<b>47.11%</b>	
Affordable tenures mix (of total HRs)	Intermediate	Social / Affordable Rent
	7.84%	92.16%

# Accommodation Mix

## Phase A Area Summary

	Residential GIA	Non Residential GIA Retail
<b>AFFORDABLE</b> Social sqm	10,304	
Intermediate Shared Own sqm	1,033	
Shared sqm	995	
Market sqm	15,417	
<b>Total</b>		
<b>sqm</b>	<b><u>27,749</u></b>	<b><u>1,490</u></b>
<b>sqft</b>	<b><u>298,688</u></b>	<b><u>16,038</u></b>

NOTE: shared areas are apportioned to floorplate commonly accessible to BOTH market and intermediate tenure

### Disclaimer:

All areas in this document are intended for illustrative purposes only. MOCO advise that the validity of all quantities and numbers be subject to a detailed check, audit and sign off by an RICS chartered surveyor. MOCO do not accept any liability for decisions or actions derived from interpretation, extrapolation or use of the areas shown.

Measurements have been calculated in accordance with the UK Government Code of Measuring Practice: Definitions for Rating Purposes.

Refer to the following website for more information:

[www.gov.uk/government/publications/measuring-practice-for-voa-property-valuations/code-of-measuring-practice-definitions-for-rating-purposes](http://www.gov.uk/government/publications/measuring-practice-for-voa-property-valuations/code-of-measuring-practice-definitions-for-rating-purposes)

Areas such as bike store, bins, and ancillary functions to be confirmed through projects development. Services consultant to confirm requirement for plant

GEA figure excludes colonnade (open sided covered ways) & framed terrace areas (open balconies) - as recommended in UK Government Code of Measuring Practice.

# Accommodation Mix

## Plot F Unit Schedule

BF - NIA Residential Room Schedule											BF - NIA Residential Area...
Plot	Level	Number	Type	Occupancy	Dwelling Tenure	Aspect	Core	Part M4	Bedrooms	Habitable Rooms	Area
Plot F	BF 01	BF.MA.L01.01	1B2P.TA	1B2P	Market	Single	BF	(2)	1	2	51.9 m <sup>2</sup>
Plot F	BF 01	BF.MA.L01.02	1B2P.TA	1B2P	Market	Single	BF	(2)	1	2	51.9 m <sup>2</sup>
Plot F	BF 01	BF.MA.L01.03	2B4P.TB	2B4P	Market	Dual	BF	(2)	2	3	82.0 m <sup>2</sup>
Plot F	BF 01	BF.MA.L01.04	2B4P.TA	2B4P	Market	Dual	BF	(2)	2	3	75.7 m <sup>2</sup>
Plot F	BF 01	BF.MA.L01.05	2B4P.TA.H	2B4P	Market	Dual	BF	(2)	2	3	76.2 m <sup>2</sup>
Plot F	BF 01	BF.MA.L01.06	1B2P.TA	1B2P	Market	Single	BF	(2)	1	2	52.0 m <sup>2</sup>
Plot F	BF 01	BF.MA.L01.07	1B2P.TB	1B2P	Market	Single	BF	(2)	1	2	56.3 m <sup>2</sup>
Plot F	BF 01	BF.MA.L01.08	1B2P.TA	1B2P	Market	Single	BF	(2)	1	2	52.0 m <sup>2</sup>
Plot F	BF 01	BF.MA.L01.09	2B4P.TC	2B4P	Market	Dual	BF	(2)	2	3	76.3 m <sup>2</sup>
Plot F	BF 01	BF.MA.L01.10	2B4P.TC.H	2B4P	Market	Dual	BF	(2)	2	3	76.2 m <sup>2</sup>
Plot F	BF 01	BF.MA.L01.11	1B2P.TA.H	1B2P	Market	Single	BF	(2)	1	2	51.9 m <sup>2</sup>
Plot F	BF 01	BF.MA.L01.12	1B1P.TA	1B1P	Market	Single	BF	(2)	1	1	39.3 m <sup>2</sup>
BF 01: 12									17	28	741.6 m <sup>2</sup>
Plot F	BF 02	BF.MA.L02.01	1B2P.TA	1B2P	Market	Single	BF	(2)	1	2	51.9 m <sup>2</sup>
Plot F	BF 02	BF.MA.L02.02	1B2P.TA	1B2P	Market	Single	BF	(2)	1	2	51.9 m <sup>2</sup>
Plot F	BF 02	BF.MA.L02.03	2B4P.TB	2B4P	Market	Dual	BF	(2)	2	3	82.0 m <sup>2</sup>
Plot F	BF 02	BF.MA.L02.04	2B4P.TA	2B4P	Market	Dual	BF	(2)	2	3	75.7 m <sup>2</sup>
Plot F	BF 02	BF.MA.L02.05	2B4P.TA.H	2B4P	Market	Dual	BF	(2)	2	3	76.2 m <sup>2</sup>
Plot F	BF 02	BF.MA.L02.06	1B2P.TA	1B2P	Market	Single	BF	(2)	1	2	52.0 m <sup>2</sup>
Plot F	BF 02	BF.MA.L02.07	2B4P.TD.WCA	2B4P	Market	Dual	BF	(3)	2	3	88.8 m <sup>2</sup>
Plot F	BF 02	BF.MA.L02.08	1B2P.TA	1B2P	Market	Single	BF	(2)	1	2	52.0 m <sup>2</sup>
Plot F	BF 02	BF.MA.L02.09	2B4P.TC	2B4P	Market	Dual	BF	(2)	2	3	76.3 m <sup>2</sup>
Plot F	BF 02	BF.MA.L02.10	2B4P.TC.H	2B4P	Market	Dual	BF	(2)	2	3	76.2 m <sup>2</sup>
Plot F	BF 02	BF.MA.L02.11	1B2P.TA.H	1B2P	Market	Single	BF	(2)	1	2	51.9 m <sup>2</sup>
Plot F	BF 02	BF.MA.L02.12	1B1P.TA	1B1P	Market	Single	BF	(2)	1	1	39.3 m <sup>2</sup>
BF 02: 12									18	29	774.1 m <sup>2</sup>
Plot F	BF 03	BF.MA.L03.01	1B2P.TA	1B2P	Market	Single	BF	(2)	1	2	51.9 m <sup>2</sup>
Plot F	BF 03	BF.MA.L03.02	1B2P.TA	1B2P	Market	Single	BF	(2)	1	2	51.9 m <sup>2</sup>
Plot F	BF 03	BF.MA.L03.03	2B4P.TB	2B4P	Market	Dual	BF	(2)	2	3	82.0 m <sup>2</sup>
Plot F	BF 03	BF.MA.L03.04	2B4P.TA	2B4P	Market	Dual	BF	(2)	2	3	75.7 m <sup>2</sup>
Plot F	BF 03	BF.MA.L03.05	2B4P.TA.H	2B4P	Market	Dual	BF	(2)	2	3	76.2 m <sup>2</sup>
Plot F	BF 03	BF.MA.L03.06	1B2P.TA	1B2P	Market	Single	BF	(2)	1	2	52.0 m <sup>2</sup>
Plot F	BF 03	BF.MA.L03.07	2B4P.TD.WCA	2B4P	Market	Dual	BF	(3)a	2	3	88.8 m <sup>2</sup>
Plot F	BF 03	BF.MA.L03.08	1B2P.TA	1B2P	Market	Single	BF	(2)	1	2	52.0 m <sup>2</sup>
Plot F	BF 03	BF.MA.L03.09	2B4P.TC	2B4P	Market	Dual	BF	(2)	2	3	76.3 m <sup>2</sup>
Plot F	BF 03	BF.MA.L03.10	2B4P.TC.H	2B4P	Market	Dual	BF	(2)	2	3	76.2 m <sup>2</sup>
Plot F	BF 03	BF.MA.L03.11	1B2P.TA.H	1B2P	Market	Single	BF	(2)	1	2	51.9 m <sup>2</sup>
Plot F	BF 03	BF.MA.L03.12	1B1P.TA	1B1P	Market	Single	BF	(2)	1	1	39.3 m <sup>2</sup>
BF 03: 12									18	29	774.1 m <sup>2</sup>
Plot F	BF 04	BF.MA.L04.01	1B2P.TA	1B2P	Market	Single	BF	(2)	1	2	51.9 m <sup>2</sup>
Plot F	BF 04	BF.MA.L04.02	1B2P.TA	1B2P	Market	Single	BF	(2)	1	2	51.9 m <sup>2</sup>
Plot F	BF 04	BF.MA.L04.03	2B4P.TB	2B4P	Market	Dual	BF	(2)	2	3	82.0 m <sup>2</sup>
Plot F	BF 04	BF.MA.L04.04	2B4P.TA	2B4P	Market	Dual	BF	(2)	2	3	75.7 m <sup>2</sup>
Plot F	BF 04	BF.MA.L04.05	2B4P.TA.H	2B4P	Market	Dual	BF	(2)	2	3	76.2 m <sup>2</sup>
Plot F	BF 04	BF.MA.L04.06	1B2P.TA	1B2P	Market	Single	BF	(2)	1	2	52.0 m <sup>2</sup>
Plot F	BF 04	BF.MA.L04.07	2B4P.TD.WCA	2B4P	Market	Dual	BF	(3)a	2	3	88.8 m <sup>2</sup>
Plot F	BF 04	BF.MA.L04.08	1B2P.TA	1B2P	Market	Single	BF	(2)	1	2	52.0 m <sup>2</sup>
Plot F	BF 04	BF.MA.L04.09	2B4P.TC	2B4P	Market	Dual	BF	(2)	2	3	76.3 m <sup>2</sup>
Plot F	BF 04	BF.MA.L04.10	2B4P.TC.H	2B4P	Market	Dual	BF	(2)	2	3	76.2 m <sup>2</sup>
Plot F	BF 04	BF.MA.L04.11	1B2P.TA.H	1B2P	Market	Single	BF	(2)	1	2	51.9 m <sup>2</sup>
Plot F	BF 04	BF.MA.L04.12	1B1P.TA	1B1P	Market	Single	BF	(2)	1	1	39.3 m <sup>2</sup>
BF 04: 12									18	29	774.1 m <sup>2</sup>
Plot F	BF 05	BF.MA.L05.01	1B2P.TA	1B2P	Market	Single	BF	(2)	1	2	51.9 m <sup>2</sup>
Plot F	BF 05	BF.MA.L05.02	1B2P.TA	1B2P	Market	Single	BF	(2)	1	2	51.9 m <sup>2</sup>
Plot F	BF 05	BF.MA.L05.03	2B4P.TB	2B4P	Market	Dual	BF	(2)	2	3	82.0 m <sup>2</sup>
Plot F	BF 05	BF.MA.L05.04	2B4P.TA	2B4P	Market	Dual	BF	(2)	2	3	75.7 m <sup>2</sup>
Plot F	BF 05	BF.MA.L05.05	2B4P.TA.H	2B4P	Market	Dual	BF	(2)	2	3	76.2 m <sup>2</sup>
Plot F	BF 05	BF.MA.L05.06	1B2P.TA	1B2P	Market	Single	BF	(2)	1	2	52.0 m <sup>2</sup>
Plot F	BF 05	BF.MA.L05.07	2B4P.TD.WCA	2B4P	Market	Dual	BF	(3)a	2	3	88.8 m <sup>2</sup>
Plot F	BF 05	BF.MA.L05.08	1B2P.TA	1B2P	Market	Single	BF	(2)	1	2	52.0 m <sup>2</sup>
Plot F	BF 05	BF.MA.L05.09	2B4P.TC	2B4P	Market	Dual	BF	(2)	2	3	76.3 m <sup>2</sup>
Plot F	BF 05	BF.MA.L05.10	2B4P.TC.H	2B4P	Market	Dual	BF	(2)	2	3	76.2 m <sup>2</sup>
Plot F	BF 05	BF.MA.L05.11	1B2P.TA.H	1B2P	Market	Single	BF	(2)	1	2	51.9 m <sup>2</sup>
Plot F	BF 05	BF.MA.L05.12	1B1P.TA	1B1P	Market	Single	BF	(2)	1	1	39.3 m <sup>2</sup>
BF 05: 12									18	29	774.1 m <sup>2</sup>

# Accommodation Mix

## Plot F Unit Schedule

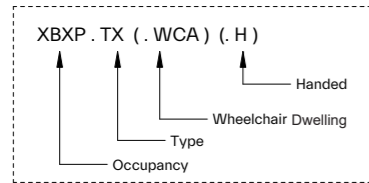
Plot F	BF 06	BF.MA.L06.01	1B2P.TA	1B2P	Market	Single	BF	(2)	1	2	51.9 m <sup>2</sup>
Plot F	BF 06	BF.MA.L06.02	1B2P.TA	1B2P	Market	Single	BF	(2)	1	2	51.9 m <sup>2</sup>
Plot F	BF 06	BF.MA.L06.03	2B4P.TB	2B4P	Market	Dual	BF	(2)	2	3	82.0 m <sup>2</sup>
Plot F	BF 06	BF.MA.L06.04	2B4P.TA	2B4P	Market	Dual	BF	(2)	2	3	75.7 m <sup>2</sup>
Plot F	BF 06	BF.MA.L06.05	2B4P.TA.H	2B4P	Market	Dual	BF	(2)	2	3	75.7 m <sup>2</sup>
Plot F	BF 06	BF.MA.L06.06	1B2P.TA	1B2P	Market	Single	BF	(2)	1	2	52.0 m <sup>2</sup>
Plot F	BF 06	BF.MA.L06.07	2B4P.TD.WCA	2B4P	Market	Dual	BF	(3)a	2	3	88.8 m <sup>2</sup>
Plot F	BF 06	BF.MA.L06.08	1B2P.TA	1B2P	Market	Single	BF	(2)	1	2	52.0 m <sup>2</sup>
Plot F	BF 06	BF.MA.L06.09	2B4P.TC	2B4P	Market	Dual	BF	(2)	2	3	76.3 m <sup>2</sup>
Plot F	BF 06	BF.MA.L06.10	2B4P.TC.H	2B4P	Market	Dual	BF	(2)	2	3	76.2 m <sup>2</sup>
Plot F	BF 06	BF.MA.L06.11	1B2P.TA.H	1B2P	Market	Single	BF	(2)	1	2	51.9 m <sup>2</sup>
Plot F	BF 06	BF.MA.L06.12	1B1P.TA	1B1P	Market	Single	BF	(2)	1	1	39.3 m <sup>2</sup>
BF 06: 12									18	29	773.6 m <sup>2</sup>
Plot F	BF 07	BF.MA.L07.01	1B2P.TA	1B2P	Market	Single	BF	(2)	1	2	51.9 m <sup>2</sup>
Plot F	BF 07	BF.MA.L07.02	1B2P.TA	1B2P	Market	Single	BF	(2)	1	2	51.9 m <sup>2</sup>
Plot F	BF 07	BF.MA.L07.03	2B4P.TB	2B4P	Market	Triple	BF	(2)	2	3	82.0 m <sup>2</sup>
Plot F	BF 07	BF.MA.L07.04	2B4P.TA	2B4P	Market	Dual	BF	(2)	2	3	75.7 m <sup>2</sup>
Plot F	BF 07	BF.MA.L07.05	2B4P.TA.H	2B4P	Market	Dual	BF	(2)	2	3	75.7 m <sup>2</sup>
Plot F	BF 07	BF.MA.L07.06	3B5P.TA	3B5P	Market	Triple	BF	(2)	3	4	97.7 m <sup>2</sup>
BF 07: 6									11	17	434.9 m <sup>2</sup>
Plot F	BF 08	BF.MA.L08.01	1B2P.TA	1B2P	Market	Single	BF	(2)	1	2	51.9 m <sup>2</sup>
Plot F	BF 08	BF.MA.L08.02	1B2P.TA	1B2P	Market	Single	BF	(2)	1	2	51.9 m <sup>2</sup>
Plot F	BF 08	BF.MA.L08.03	2B4P.TB	2B4P	Market	Triple	BF	(2)	2	3	82.0 m <sup>2</sup>
Plot F	BF 08	BF.MA.L08.04	2B4P.TA	2B4P	Market	Dual	BF	(2)	2	3	75.7 m <sup>2</sup>
Plot F	BF 08	BF.MA.L08.05	2B4P.TA.H	2B4P	Market	Dual	BF	(2)	2	3	75.7 m <sup>2</sup>
Plot F	BF 08	BF.MA.L08.06	3B5P.TA	3B5P	Market	Triple	BF	(2)	3	4	97.7 m <sup>2</sup>
BF 08: 6									11	17	434.9 m <sup>2</sup>
Plot F	BF 09	BF.MA.L09.01	1B2P.TA	1B2P	Market	Single	BF	(2)	1	2	51.9 m <sup>2</sup>
Plot F	BF 09	BF.MA.L09.02	1B2P.TA	1B2P	Market	Single	BF	(2)	1	2	51.9 m <sup>2</sup>
Plot F	BF 09	BF.MA.L09.03	2B4P.TB	2B4P	Market	Triple	BF	(2)	2	3	82.0 m <sup>2</sup>
Plot F	BF 09	BF.MA.L09.04	2B4P.TA	2B4P	Market	Dual	BF	(2)	2	3	75.7 m <sup>2</sup>
Plot F	BF 09	BF.MA.L09.05	2B4P.TA.H	2B4P	Market	Dual	BF	(2)	2	3	75.7 m <sup>2</sup>
Plot F	BF 09	BF.MA.L09.06	3B5P.TA	3B5P	Market	Triple	BF	(2)	3	4	97.7 m <sup>2</sup>
BF 09: 6									11	17	434.9 m <sup>2</sup>
Plot F	BF 10	BF.MA.L10.01	1B2P.TA	1B2P	Market	Single	BF	(2)	1	2	51.9 m <sup>2</sup>
Plot F	BF 10	BF.MA.L10.02	2B4P.TA	2B4P	Market	Single	BF	(2)	1	2	51.9 m <sup>2</sup>
Plot F	BF 10	BF.MA.L10.03	2B4P.TB	2B4P	Market	Triple	BF	(2)	2	3	82.0 m <sup>2</sup>
Plot F	BF 10	BF.MA.L10.04	2B4P.TA	2B4P	Market	Dual	BF	(2)	2	3	75.7 m <sup>2</sup>
Plot F	BF 10	BF.MA.L10.05	2B4P.TA.H	2B4P	Market	Dual	BF	(2)	2	3	75.7 m <sup>2</sup>
Plot F	BF 10	BF.MA.L10.06	3B5P.TA	3B5P	Market	Triple	BF	(2)	3	4	97.7 m <sup>2</sup>
BF 10: 6									11	17	434.9 m <sup>2</sup>
Plot F	BF 11	BF.MA.L11.01	1B2P.TA	1B2P	Market	Single	BF	(2)	1	2	51.9 m <sup>2</sup>
Plot F	BF 11	BF.MA.L11.02	1B2P.TA	1B2P	Market	Single	BF	(2)	1	2	51.9 m <sup>2</sup>
Plot F	BF 11	BF.MA.L11.03	2B4P.TB	2B4P	Market	Triple	BF	(2)	2	3	82.0 m <sup>2</sup>
Plot F	BF 11	BF.MA.L11.04	2B4P.TA	2B4P	Market	Dual	BF	(2)	2	3	75.7 m <sup>2</sup>
Plot F	BF 11	BF.MA.L11.05	2B4P.TA.H	2B4P	Market	Dual	BF	(2)	2	3	75.7 m <sup>2</sup>
Plot F	BF 11	BF.MA.L11.06	3B5P.TA	3B5P	Market	Triple	BF	(2)	3	4	98.0 m <sup>2</sup>
BF 11: 6									11	17	435.2 m <sup>2</sup>
									162	258	6786.8 m <sup>2</sup>

# Unit Types Schedule + Storage and Bedroom Schedule

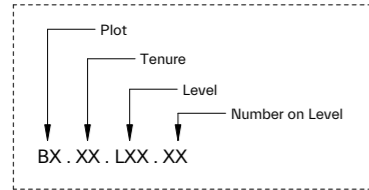
## Plot F

See codes below for Name and Number:

**Name:**



**Number:**



Tenure:  
 MA = Market  
 SO = Shared Ownership  
 SR = Social Rent

BF - Unit Types Schedule	
Name	Number
1B1P.TA	BF.MA.L01.12
1B1P.TA	BF.MA.L02.12
1B1P.TA	BF.MA.L03.12
1B1P.TA	BF.MA.L04.12
1B1P.TA	BF.MA.L05.12
1B1P.TA	BF.MA.L06.12
1B1P.TA: 6	
1B2P.TA	BF.MA.L01.01
1B2P.TA	BF.MA.L01.02
1B2P.TA	BF.MA.L01.06
1B2P.TA	BF.MA.L01.08
1B2P.TA	BF.MA.L02.01
1B2P.TA	BF.MA.L02.02
1B2P.TA	BF.MA.L02.06
1B2P.TA	BF.MA.L02.08
1B2P.TA	BF.MA.L03.01
1B2P.TA	BF.MA.L03.02
1B2P.TA	BF.MA.L03.06
1B2P.TA	BF.MA.L03.08
1B2P.TA	BF.MA.L04.01
1B2P.TA	BF.MA.L04.02
1B2P.TA	BF.MA.L04.06
1B2P.TA	BF.MA.L04.08
1B2P.TA	BF.MA.L05.01
1B2P.TA	BF.MA.L05.02
1B2P.TA	BF.MA.L05.06
1B2P.TA	BF.MA.L05.08
1B2P.TA	BF.MA.L06.01
1B2P.TA	BF.MA.L06.02
1B2P.TA	BF.MA.L06.06
1B2P.TA	BF.MA.L06.08
1B2P.TA	BF.MA.L07.01
1B2P.TA	BF.MA.L07.02
1B2P.TA	BF.MA.L08.01
1B2P.TA	BF.MA.L08.02
1B2P.TA	BF.MA.L09.01
1B2P.TA	BF.MA.L09.02
1B2P.TA	BF.MA.L10.01
1B2P.TA	BF.MA.L11.01
1B2P.TA	BF.MA.L11.02
1B2P.TA: 33	
1B2P.TA.H	BF.MA.L01.11
1B2P.TA.H	BF.MA.L02.11
1B2P.TA.H	BF.MA.L03.11
1B2P.TA.H	BF.MA.L04.11
1B2P.TA.H	BF.MA.L05.11
1B2P.TA.H	BF.MA.L06.11
1B2P.TA.H: 6	
1B2P.TB	BF.MA.L01.07
1B2P.TB: 1	
2B4P.TA	BF.MA.L01.04
2B4P.TA	BF.MA.L02.04
2B4P.TA	BF.MA.L03.04
2B4P.TA	BF.MA.L04.04
2B4P.TA	BF.MA.L05.04
2B4P.TA	BF.MA.L06.04
2B4P.TA	BF.MA.L07.04
2B4P.TA	BF.MA.L08.04
2B4P.TA	BF.MA.L09.04
2B4P.TA	BF.MA.L10.02
2B4P.TA	BF.MA.L10.04
2B4P.TA	BF.MA.L11.04
2B4P.TA: 12	

2B4P.TA.H	BF.MA.L01.05
2B4P.TA.H	BF.MA.L02.05
2B4P.TA.H	BF.MA.L03.05
2B4P.TA.H	BF.MA.L04.05
2B4P.TA.H	BF.MA.L05.05
2B4P.TA.H	BF.MA.L06.05
2B4P.TA.H	BF.MA.L07.05
2B4P.TA.H	BF.MA.L08.05
2B4P.TA.H	BF.MA.L09.05
2B4P.TA.H	BF.MA.L10.05
2B4P.TA.H	BF.MA.L11.05
2B4P.TA.H: 11	
2B4P.TB	BF.MA.L01.03
2B4P.TB	BF.MA.L02.03
2B4P.TB	BF.MA.L03.03
2B4P.TB	BF.MA.L04.03
2B4P.TB	BF.MA.L05.03
2B4P.TB	BF.MA.L06.03
2B4P.TB	BF.MA.L07.03
2B4P.TB	BF.MA.L08.03
2B4P.TB	BF.MA.L09.03
2B4P.TB	BF.MA.L10.03
2B4P.TB	BF.MA.L11.03
2B4P.TB: 11	
2B4P.TC	BF.MA.L01.09
2B4P.TC	BF.MA.L02.09
2B4P.TC	BF.MA.L03.09
2B4P.TC	BF.MA.L04.09
2B4P.TC	BF.MA.L05.09
2B4P.TC	BF.MA.L06.09
2B4P.TC: 6	
2B4P.TC.H	BF.MA.L01.10
2B4P.TC.H	BF.MA.L02.10
2B4P.TC.H	BF.MA.L03.10
2B4P.TC.H	BF.MA.L04.10
2B4P.TC.H	BF.MA.L05.10
2B4P.TC.H	BF.MA.L06.10
2B4P.TC.H: 6	
2B4P.TD.WCA	BF.MA.L02.07
2B4P.TD.WCA	BF.MA.L03.07
2B4P.TD.WCA	BF.MA.L04.07
2B4P.TD.WCA	BF.MA.L05.07
2B4P.TD.WCA	BF.MA.L06.07
2B4P.TD.WCA: 5	
3B5P.TA	BF.MA.L07.06
3B5P.TA	BF.MA.L08.06
3B5P.TA	BF.MA.L09.06
3B5P.TA	BF.MA.L10.06
3B5P.TA	BF.MA.L11.06
3B5P.TA: 5	
Grand total: 102	

TOTAL NUMBER OF UNIT TYPES = 8

Note:  
 - Handed units are mirrored images and as such, are the same unit type ie, 1B2P.TA is the same unit as 1B2P.TA.H

BF - Storage and Bedroom Schedule			
Name	Space	Occupancy	Area
1B1P.TA	Bedroom 01	Single	12.3 m <sup>2</sup>
1B1P.TA	Store		1.3 m <sup>2</sup>
1B2P.TA	Bedroom 01	Double	14.7 m <sup>2</sup>
1B2P.TA	Store		1.7 m <sup>2</sup>
1B2P.TB	Bedroom 01	Double	15.1 m <sup>2</sup>
1B2P.TB	Store		1.6 m <sup>2</sup>
2B4P.TA	Bedroom 01	Double	13.3 m <sup>2</sup>
2B4P.TA	Bedroom 02	Double	11.5 m <sup>2</sup>
2B4P.TA	Store		2.1 m <sup>2</sup>
2B4P.TB	Bedroom 01	Double	14.2 m <sup>2</sup>
2B4P.TB	Bedroom 02	Double	11.5 m <sup>2</sup>
2B4P.TB	Store		2.1 m <sup>2</sup>
2B4P.TC	Bedroom 01	Double	12.2 m <sup>2</sup>
2B4P.TC	Bedroom 02	Double	11.7 m <sup>2</sup>
2B4P.TC	Store		2.1 m <sup>2</sup>
2B4P.TD.WCA	Bedroom 01	Double	14.2 m <sup>2</sup>
2B4P.TD.WCA	Bedroom 02	Double	15.1 m <sup>2</sup>
2B4P.TD.WCA	Store		2.0 m <sup>2</sup>
3B5P.TA	Bedroom 01	Double	14.3 m <sup>2</sup>
3B5P.TA	Bedroom 02	Double	12.2 m <sup>2</sup>
3B5P.TA	Bedroom 03	Single	8.8 m <sup>2</sup>
3B5P.TA	Store		2.5 m <sup>2</sup>

Note:  
 - Same storage and bedroom areas for all handed units  
 - For wheel chair adapted layouts, refer to drawings for storage area

# Accommodation Mix

## Plot H1 + H2 Unit Schedule

BH1/2 - NIA Residential Room Schedule											BH1/2 - NIA Residential Area...
Plot	Level	Number	Type	Occupancy	Dwelling Tenure	Aspect	Core	Part M4	Bedrooms	Habitable Rooms	Area
Plot H	BH 01	BH1.SR.L01.01	2B4P.TA	2B4P	Social Rent	Dual	BH1	(2)	2	3	73.4 m <sup>2</sup>
Plot H	BH 01	BH1.SR.L01.02	3B5P.TA	3B5P	Social Rent	Dual	BH1	(2)	3	5	99.7 m <sup>2</sup>
Plot H	BH 01	BH1.SR.L01.03	4B7P.TC.M	4B7P	Social Rent	Dual	BH1	(2)	4	4	73.4 m <sup>2</sup>
Plot H	BH 01	BH1.SR.L01.04	4B7P.TB.M	4B7P	Social Rent	Dual	BH1	(2)	4	4	68.2 m <sup>2</sup>
Plot H	BH 01	BH1.SR.L01.05	4B7P.TB.M.H	4B7P	Social Rent	Dual	BH1	(2)	4	4	68.2 m <sup>2</sup>
Plot H	BH 01	BH1.SR.L01.06	4B7P.TA.M	4B7P	Social Rent	Dual	BH1	(2)	4	4	65.1 m <sup>2</sup>
Plot H	BH 01	BH2.SR.L01.01	2B4P.TA.H	2B4P	Social Rent	Dual	BH2	(2)	2	3	73.4 m <sup>2</sup>
Plot H	BH 01	BH2.SR.L01.02	3B5P.TA.H	3B5P	Social Rent	Dual	BH2	(2)	3	5	99.7 m <sup>2</sup>
Plot H	BH 01	BH2.SR.L01.03	4B7P.TC.M.H	4B7P	Social Rent	Dual	BH2	(2)	4	4	73.4 m <sup>2</sup>
Plot H	BH 01	BH2.SR.L01.04	4B7P.TB.M.H	4B7P	Social Rent	Dual	BH2	(2)	4	4	68.2 m <sup>2</sup>
Plot H	BH 01	BH2.SR.L01.05	4B7P.TB.M	4B7P	Social Rent	Dual	BH2	(2)	4	4	68.2 m <sup>2</sup>
Plot H	BH 01	BH2.SR.L01.06	4B7P.TA.M.H	4B7P	Social Rent	Dual	BH2	(2)	4	4	65.1 m <sup>2</sup>
BH 01: 12									42	48	895.9 m <sup>2</sup>
Plot H	BH 02	BH1.SR.L02.01	2B4P.TA	2B4P	Social Rent	Dual	BH1	(2)	2	3	74.1 m <sup>2</sup>
Plot H	BH 02	BH1.SR.L02.02	3B5P.TA	3B5P	Social Rent	Dual	BH1	(2)	3	5	99.7 m <sup>2</sup>
Plot H	BH 02	BH1.SR.L02.03	4B7P.TC.M	4B7P	Social Rent	Dual	BH1	(2)	0	2	58.8 m <sup>2</sup>
Plot H	BH 02	BH1.SR.L02.04	4B7P.TB.M	4B7P	Social Rent	Dual	BH1	(2)	0	2	54.7 m <sup>2</sup>
Plot H	BH 02	BH1.SR.L02.05	4B7P.TB.M.H	4B7P	Social Rent	Dual	BH1	(2)	0	2	54.8 m <sup>2</sup>
Plot H	BH 02	BH1.SR.L02.06	4B7P.TA.M	4B7P	Social Rent	Dual	BH1	(2)	0	2	65.4 m <sup>2</sup>
Plot H	BH 02	BH2.SR.L02.01	2B4P.TA.H	2B4P	Social Rent	Dual	BH2	(2)	2	3	74.1 m <sup>2</sup>
Plot H	BH 02	BH2.SR.L02.02	3B5P.TA.H	3B5P	Social Rent	Dual	BH2	(2)	3	5	99.7 m <sup>2</sup>
Plot H	BH 02	BH2.SR.L02.03	4B7P.TC.M.H	4B7P	Social Rent	Dual	BH2	(2)	0	2	58.8 m <sup>2</sup>
Plot H	BH 02	BH2.SR.L02.04	4B7P.TB.M.H	4B7P	Social Rent	Dual	BH2	(2)	0	2	54.7 m <sup>2</sup>
Plot H	BH 02	BH2.SR.L02.05	4B7P.TB.M	4B7P	Social Rent	Dual	BH2	(2)	0	2	54.8 m <sup>2</sup>
Plot H	BH 02	BH2.SR.L02.06	4B7P.TA.M.H	4B7P	Social Rent	Dual	BH2	(2)	0	2	65.4 m <sup>2</sup>
BH 02: 12									10	32	815.3 m <sup>2</sup>
Plot H	BH 03	BH1.SR.L03.01	2B4P.TA	2B4P	Social Rent	Dual	BH1	(2)	2	3	73.4 m <sup>2</sup>
Plot H	BH 03	BH1.SR.L03.02	3B5P.TA	3B5P	Social Rent	Dual	BH1	(2)	3	5	99.7 m <sup>2</sup>
Plot H	BH 03	BH1.SR.L03.03	3B5P.TB.WCA	3B5P	Social Rent	Dual	BH1	(3)b	3	5	115.1 m <sup>2</sup>
Plot H	BH 03	BH1.SR.L03.04	1B2P.TA	1B2P	Social Rent	Dual	BH1	(2)	1	2	54.7 m <sup>2</sup>
Plot H	BH 03	BH1.SR.L03.05	2B3P.TA	2B3P	Social Rent	Dual	BH1	(2)	2	3	65.5 m <sup>2</sup>
Plot H	BH 03	BH2.SR.L03.01	2B4P.TA.H	2B4P	Social Rent	Dual	BH2	(2)	2	3	73.4 m <sup>2</sup>
Plot H	BH 03	BH2.SR.L03.02	3B5P.TA.H	3B5P	Social Rent	Dual	BH2	(2)	3	5	99.7 m <sup>2</sup>
Plot H	BH 03	BH2.SR.L03.03	3B5P.TB.WCA.H	3B5P	Social Rent	Dual	BH2	(3)b	3	5	115.1 m <sup>2</sup>
Plot H	BH 03	BH2.SR.L03.04	1B2P.TA.H	1B2P	Social Rent	Dual	BH2	(2)	1	2	54.7 m <sup>2</sup>
Plot H	BH 03	BH2.SR.L03.05	2B3P.TA.H	2B3P	Social Rent	Dual	BH2	(2)	2	3	65.5 m <sup>2</sup>
BH 03: 10									22	36	816.9 m <sup>2</sup>
Plot H	BH 04	BH1.SR.L04.01	2B4P.TA	2B4P	Social Rent	Dual	BH1	(2)	2	3	74.1 m <sup>2</sup>
Plot H	BH 04	BH1.SR.L04.02	3B5P.TA	3B5P	Social Rent	Dual	BH1	(2)	3	5	99.7 m <sup>2</sup>
Plot H	BH 04	BH1.SR.L04.03	3B5P.TB.WCA	3B5P	Social Rent	Dual	BH1	(3)b	3	5	115.1 m <sup>2</sup>
Plot H	BH 04	BH1.SR.L04.04	1B2P.TA	1B2P	Social Rent	Dual	BH1	(2)	1	2	54.7 m <sup>2</sup>
Plot H	BH 04	BH1.SR.L04.05	2B3P.TA	2B3P	Social Rent	Dual	BH1	(2)	2	3	65.5 m <sup>2</sup>
Plot H	BH 04	BH2.SR.L04.01	2B4P.TA.H	2B4P	Social Rent	Dual	BH2	(2)	2	3	74.1 m <sup>2</sup>
Plot H	BH 04	BH2.SR.L04.02	3B5P.TA.H	3B5P	Social Rent	Dual	BH2	(2)	3	5	99.7 m <sup>2</sup>
Plot H	BH 04	BH2.SR.L04.03	3B5P.TB.WCA.H	3B5P	Social Rent	Dual	BH2	(3)b	3	5	115.1 m <sup>2</sup>
Plot H	BH 04	BH2.SR.L04.04	1B2P.TA.H	1B2P	Social Rent	Dual	BH2	(2)	1	2	54.7 m <sup>2</sup>
Plot H	BH 04	BH2.SR.L04.05	2B3P.TA.H	2B3P	Social Rent	Dual	BH2	(2)	2	3	65.5 m <sup>2</sup>
BH 04: 10									22	36	818.3 m <sup>2</sup>
Plot H	BH 05	BH1.SR.L05.01	2B4P.TA	2B4P	Social Rent	Dual	BH1	(2)	2	3	73.4 m <sup>2</sup>
Plot H	BH 05	BH1.SR.L05.02	3B5P.TA	3B5P	Social Rent	Dual	BH1	(2)	3	5	99.7 m <sup>2</sup>
Plot H	BH 05	BH1.SR.L05.03	3B5P.TB.WCA	3B5P	Social Rent	Dual	BH1	(3)b	3	5	115.1 m <sup>2</sup>
Plot H	BH 05	BH1.SR.L05.04	1B2P.TA	1B2P	Social Rent	Dual	BH1	(2)	1	2	54.7 m <sup>2</sup>
Plot H	BH 05	BH1.SR.L05.05	2B3P.TA	2B3P	Social Rent	Dual	BH1	(2)	2	3	65.5 m <sup>2</sup>
Plot H	BH 05	BH2.SR.L05.01	2B4P.TA.H	2B4P	Social Rent	Dual	BH2	(2)	2	3	73.4 m <sup>2</sup>
Plot H	BH 05	BH2.SR.L05.02	3B5P.TA.H	3B5P	Social Rent	Dual	BH2	(2)	3	5	99.7 m <sup>2</sup>
Plot H	BH 05	BH2.SR.L05.03	3B5P.TB.WCA.H	3B5P	Social Rent	Dual	BH2	(3)b	3	5	115.1 m <sup>2</sup>
Plot H	BH 05	BH2.SR.L05.04	1B2P.TA.H	1B2P	Social Rent	Dual	BH2	(2)	1	2	54.7 m <sup>2</sup>
Plot H	BH 05	BH2.SR.L05.05	2B3P.TA.H	2B3P	Social Rent	Dual	BH2	(2)	2	3	65.5 m <sup>2</sup>
BH 05: 10									22	36	816.9 m <sup>2</sup>
Plot H	BH 06	BH1.SR.L06.01	2B4P.TA	2B4P	Social Rent	Dual	BH1	(2)	2	3	74.1 m <sup>2</sup>
Plot H	BH 06	BH1.SR.L06.02	3B5P.TA	3B5P	Social Rent	Dual	BH1	(2)	3	5	99.7 m <sup>2</sup>
Plot H	BH 06	BH1.SR.L06.03	3B5P.TB.WCA	3B5P	Social Rent	Dual	BH1	(3)b	3	5	115.1 m <sup>2</sup>
Plot H	BH 06	BH1.SR.L06.04	1B2P.TA	1B2P	Social Rent	Dual	BH1	(2)	1	2	54.7 m <sup>2</sup>
Plot H	BH 06	BH1.SR.L06.05	2B3P.TA	2B3P	Social Rent	Dual	BH1	(2)	2	3	65.5 m <sup>2</sup>
Plot H	BH 06	BH2.SR.L06.01	2B4P.TA.H	2B4P	Social Rent	Dual	BH2	(2)	2	3	74.1 m <sup>2</sup>
Plot H	BH 06	BH2.SR.L06.02	3B5P.TA.H	3B5P	Social Rent	Dual	BH2	(2)	3	5	99.7 m <sup>2</sup>
Plot H	BH 06	BH2.SR.L06.03	3B5P.TB.WCA.H	3B5P	Social Rent	Dual	BH2	(3)b	3	5	115.1 m <sup>2</sup>
Plot H	BH 06	BH2.SR.L06.04	1B2P.TA.H	1B2P	Social Rent	Dual	BH2	(2)	1	2	54.7 m <sup>2</sup>
Plot H	BH 06	BH2.SR.L06.05	2B3P.TA.H	2B3P	Social Rent	Dual	BH2	(2)	2	3	65.5 m <sup>2</sup>
BH 06: 10									22	36	818.3 m <sup>2</sup>

# Accommodation Mix

## Plot H1 + H2 Unit Schedule

Plot H	BH 07	BH1.SR.L07.01	2B4P.TA	2B4P	Social Rent	Dual	BH1	(2)	2	3	73.4 m <sup>2</sup>
Plot H	BH 07	BH1.SR.L07.02	3B5P.TA	3B5P	Social Rent	Dual	BH1	(2)	3	5	99.7 m <sup>2</sup>
Plot H	BH 07	BH1.SR.L07.03	3B5P.TB.WCA	3B5P	Social Rent	Dual	BH1	(3)b	3	5	115.1 m <sup>2</sup>
Plot H	BH 07	BH1.SR.L07.04	1B2P.TA	1B2P	Social Rent	Dual	BH1	(2)	1	2	54.7 m <sup>2</sup>
Plot H	BH 07	BH1.SR.L07.05	2B3P.TA	2B3P	Social Rent	Dual	BH1	(2)	2	3	65.5 m <sup>2</sup>
Plot H	BH 07	BH2.SR.L07.01	2B4P.TA.H	2B4P	Social Rent	Dual	BH2	(2)	2	3	73.4 m <sup>2</sup>
Plot H	BH 07	BH2.SR.L07.02	3B5P.TA.H	3B5P	Social Rent	Dual	BH2	(2)	3	5	99.7 m <sup>2</sup>
Plot H	BH 07	BH2.SR.L07.03	3B5P.TB.WCA.H	3B5P	Social Rent	Dual	BH2	(3)b	3	5	115.1 m <sup>2</sup>
Plot H	BH 07	BH2.SR.L07.04	1B2P.TA.H	1B2P	Social Rent	Dual	BH2	(2)	1	2	54.7 m <sup>2</sup>
Plot H	BH 07	BH2.SR.L07.05	2B3P.TA.H	2B3P	Social Rent	Dual	BH2	(2)	2	3	65.5 m <sup>2</sup>
BH 07: 10									22	36	816.9 m <sup>2</sup>
									162	260	5798.4 m <sup>2</sup>

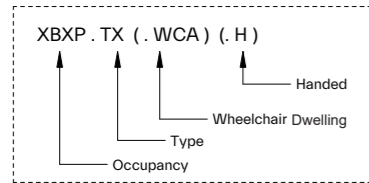


# Unit Types Schedule + Storage and Bedroom Schedule

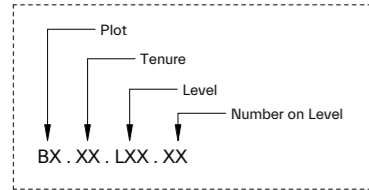
## Plot H1/2

See codes below for Name and Number:

Name:



Number:



Tenure:  
 MA = Market  
 SO = Shared Ownership  
 SR = Social Rent

BH1/2 - Unit Types Schedule	
Name	Number
1B2P.TA	BH1.SR.L03.04
1B2P.TA	BH1.SR.L04.04
1B2P.TA	BH1.SR.L05.04
1B2P.TA	BH1.SR.L06.04
1B2P.TA	BH1.SR.L07.04
1B2P.TA: 5	
1B2P.TA.H	BH2.SR.L03.04
1B2P.TA.H	BH2.SR.L04.04
1B2P.TA.H	BH2.SR.L05.04
1B2P.TA.H	BH2.SR.L06.04
1B2P.TA.H	BH2.SR.L07.04
1B2P.TA.H: 5	
2B3P.TA	BH1.SR.L03.05
2B3P.TA	BH1.SR.L04.05
2B3P.TA	BH1.SR.L05.05
2B3P.TA	BH1.SR.L06.05
2B3P.TA	BH1.SR.L07.05
2B3P.TA: 5	
2B3P.TA.H	BH2.SR.L03.05
2B3P.TA.H	BH2.SR.L04.05
2B3P.TA.H	BH2.SR.L05.05
2B3P.TA.H	BH2.SR.L06.05
2B3P.TA.H	BH2.SR.L07.05
2B3P.TA.H: 5	
2B4P.TA	BH1.SR.L01.01
2B4P.TA	BH1.SR.L02.01
2B4P.TA	BH1.SR.L03.01
2B4P.TA	BH1.SR.L04.01
2B4P.TA	BH1.SR.L05.01
2B4P.TA	BH1.SR.L06.01
2B4P.TA	BH1.SR.L07.01
2B4P.TA: 7	
2B4P.TA.H	BH2.SR.L01.01
2B4P.TA.H	BH2.SR.L02.01
2B4P.TA.H	BH2.SR.L03.01
2B4P.TA.H	BH2.SR.L04.01
2B4P.TA.H	BH2.SR.L05.01
2B4P.TA.H	BH2.SR.L06.01
2B4P.TA.H	BH2.SR.L07.01
2B4P.TA.H: 7	
3B5P.TA	BH1.SR.L01.02
3B5P.TA	BH1.SR.L02.02
3B5P.TA	BH1.SR.L03.02
3B5P.TA	BH1.SR.L04.02
3B5P.TA	BH1.SR.L05.02
3B5P.TA	BH1.SR.L06.02
3B5P.TA	BH1.SR.L07.02
3B5P.TA: 7	
3B5P.TA.H	BH2.SR.L01.02
3B5P.TA.H	BH2.SR.L02.02
3B5P.TA.H	BH2.SR.L03.02
3B5P.TA.H	BH2.SR.L04.02
3B5P.TA.H	BH2.SR.L05.02
3B5P.TA.H	BH2.SR.L06.02
3B5P.TA.H	BH2.SR.L07.02
3B5P.TA.H: 7	

3B5P.TB.WCA	BH1.SR.L03.03
3B5P.TB.WCA	BH1.SR.L04.03
3B5P.TB.WCA	BH1.SR.L05.03
3B5P.TB.WCA	BH1.SR.L06.03
3B5P.TB.WCA	BH1.SR.L07.03
3B5P.TB.WCA: 5	
3B5P.TB.WCA.H	BH2.SR.L03.03
3B5P.TB.WCA.H	BH2.SR.L04.03
3B5P.TB.WCA.H	BH2.SR.L05.03
3B5P.TB.WCA.H	BH2.SR.L06.03
3B5P.TB.WCA.H	BH2.SR.L07.03
3B5P.TB.WCA.H: 5	
4B7P.TA.M	BH1.SR.L02.06
4B7P.TA.M: 1	
4B7P.TA.M.H	BH2.SR.L02.06
4B7P.TA.M.H: 1	
4B7P.TB.M	BH2.SR.L02.05
4B7P.TB.M	BH1.SR.L02.04
4B7P.TB.M: 2	
4B7P.TB.M.H	BH2.SR.L02.04
4B7P.TB.M.H	BH1.SR.L02.05
4B7P.TB.M.H: 2	
4B7P.TC.M	BH1.SR.L02.03
4B7P.TC.M: 1	
4B7P.TC.M.H	BH2.SR.L02.03
4B7P.TC.M.H: 1	
Grand total: 66	

TOTAL NUMBER OF UNIT TYPES = 8

Note:  
 - Handed units are mirrored images and as such, are the same unit type ie, 1B2P.TA is the same unit as 1B2P.TA.H

BH1/2 - Storage and Bedroom Schedule			
Name	Space	Occupancy	Area
1B2P.TA	Bedroom 01	Double	12.0 m <sup>2</sup>
1B2P.TA	Store		1.6 m <sup>2</sup>
2B3P.TA	Bedroom 01	Double	13.0 m <sup>2</sup>
2B3P.TA	Bedroom 02	Single	10.0 m <sup>2</sup>
2B3P.TA	Store		2.0 m <sup>2</sup>
2B4P.TA	Bedroom 01	Double	13.4 m <sup>2</sup>
2B4P.TA	Bedroom 02	Double	12.6 m <sup>2</sup>
2B4P.TA	Store		2.5 m <sup>2</sup>
3B5P.TA	Bedroom 01	Double	12.0 m <sup>2</sup>
3B5P.TA	Bedroom 02	Double	12.0 m <sup>2</sup>
3B5P.TA	Bedroom 03	Single	8.8 m <sup>2</sup>
3B5P.TA	Store		3.0 m <sup>2</sup>
3B5P.TB.WCA	Bedroom 01	Double	14.5 m <sup>2</sup>
3B5P.TB.WCA	Bedroom 02	Double	12.1 m <sup>2</sup>
3B5P.TB.WCA	Bedroom 03	Single	9.9 m <sup>2</sup>
3B5P.TB.WCA	Store		3.0 m <sup>2</sup>
4B7P.TA.M	Bedroom 01	Double	12.1 m <sup>2</sup>
4B7P.TA.M	Bedroom 02	Double	12.0 m <sup>2</sup>
4B7P.TA.M	Bedroom 03	Double	12.0 m <sup>2</sup>
4B7P.TA.M	Bedroom 04	Single	9.1 m <sup>2</sup>
4B7P.TA.M	Store		4.0 m <sup>2</sup>
4B7P.TB.M	Bedroom 01	Double	14.9 m <sup>2</sup>
4B7P.TB.M	Bedroom 02	Double	12.0 m <sup>2</sup>
4B7P.TB.M	Bedroom 03	Double	12.4 m <sup>2</sup>
4B7P.TB.M	Bedroom 04	Single	8.0 m <sup>2</sup>
4B7P.TB.M	Store		4.0 m <sup>2</sup>
4B7P.TC.M	Bedroom 01	Double	14.2 m <sup>2</sup>
4B7P.TC.M	Bedroom 02	Double	12.0 m <sup>2</sup>
4B7P.TC.M	Bedroom 03	Double	14.2 m <sup>2</sup>
4B7P.TC.M	Bedroom 04	Single	9.8 m <sup>2</sup>
4B7P.TC.M	Store		4.2 m <sup>2</sup>

Note:  
 - Same storage and bedroom areas for all handed units  
 - For wheel chair adapted layouts, refer to drawings for storage area



# Accommodation Mix

## Plot H3 Unit Schedule

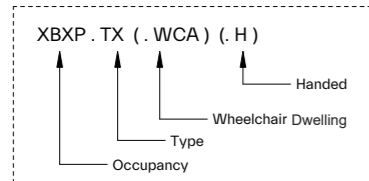
BH3 - NIA Residential Room Schedule											BH3 - NIA Residential Area...
Plot	Level	Number	Type	Occupancy	Dwelling Tenure	Aspect	Core	Part M4	Bedrooms	Habitable Rooms	Area
Plot H	BH 01	BH3.SO.L01.01	2B4P.TA	2B4P	Shared Ownership	Dual	BH3	(2)	2	3	72.9 m <sup>2</sup>
Plot H	BH 01	BH3.SO.L01.02	2B4P.TB	2B4P	Shared Ownership	Single	BH3	(2)	2	3	73.3 m <sup>2</sup>
Plot H	BH 01	BH3.SO.L01.03	1B2P.TA	1B2P	Shared Ownership	Single	BH3	(2)	1	2	53.5 m <sup>2</sup>
Plot H	BH 01	BH3.SO.L01.04	2B4P.TB.H	2B4P	Shared Ownership	Single	BH3	(2)	2	3	73.3 m <sup>2</sup>
Plot H	BH 01	BH3.SO.L01.05	2B4P.TA.H	2B4P	Shared Ownership	Dual	BH3	(2)	2	3	72.9 m <sup>2</sup>
Plot H	BH 01	BH3.SO.L01.06	2B3P.TA.WCA.H	2B3P	Shared Ownership	Dual	BH3	(3)	2	3	96.1 m <sup>2</sup>
Plot H	BH 01	BH3.SO.L01.07	2B3P.TA.WCA	2B3P	Shared Ownership	Dual	BH3	(3)	2	3	96.1 m <sup>2</sup>
BH 01: 7									13	20	537.9 m <sup>2</sup>
Plot H	BH 02	BH3.MA.L02.01	2B4P.TA	2B4P	Market	Dual	BH3	(2)	2	3	72.9 m <sup>2</sup>
Plot H	BH 02	BH3.MA.L02.02	2B4P.TB	2B4P	Market	Dual	BH3	(2)	2	3	73.3 m <sup>2</sup>
Plot H	BH 02	BH3.MA.L02.03	1B2P.TA	1B2P	Market	Single	BH3	(2)	1	2	53.5 m <sup>2</sup>
Plot H	BH 02	BH3.MA.L02.04	2B4P.TB.H	2B4P	Market	Dual	BH3	(2)	2	3	73.3 m <sup>2</sup>
Plot H	BH 02	BH3.MA.L02.05	2B4P.TA.H	2B4P	Market	Dual	BH3	(2)	2	3	72.9 m <sup>2</sup>
Plot H	BH 02	BH3.MA.L02.06	1B2P.TB.H	1B2P	Market	Dual	BH3	(2)	1	2	52.3 m <sup>2</sup>
Plot H	BH 02	BH3.MA.L02.07	1B1P.TA.H	1B1P	Market	Single	BH3	(2)	1	1	42.1 m <sup>2</sup>
Plot H	BH 02	BH3.MA.L02.08	1B1P.TA	1B1P	Market	Single	BH3	(2)	1	1	42.1 m <sup>2</sup>
Plot H	BH 02	BH3.MA.L02.09	1B2P.TB	1B2P	Market	Dual	BH3	(2)	1	2	52.3 m <sup>2</sup>
BH 02: 9									13	20	534.6 m <sup>2</sup>
Plot H	BH 03	BH3.MA.L03.01	2B4P.TA	2B4P	Market	Dual	BH3	(2)	2	3	72.9 m <sup>2</sup>
Plot H	BH 03	BH3.MA.L03.02	2B4P.TB	2B4P	Market	Dual	BH3	(2)	2	3	73.3 m <sup>2</sup>
Plot H	BH 03	BH3.MA.L03.03	1B2P.TA	1B2P	Market	Single	BH3	(2)	1	2	53.5 m <sup>2</sup>
Plot H	BH 03	BH3.MA.L03.04	2B4P.TB.H	2B4P	Market	Dual	BH3	(2)	2	3	73.3 m <sup>2</sup>
Plot H	BH 03	BH3.MA.L03.05	2B4P.TA.H	2B4P	Market	Dual	BH3	(2)	2	3	72.9 m <sup>2</sup>
Plot H	BH 03	BH3.MA.L03.06	1B2P.TB.H	1B2P	Market	Dual	BH3	(2)	1	2	52.3 m <sup>2</sup>
Plot H	BH 03	BH3.MA.L03.07	1B1P.TA.H	1B1P	Market	Single	BH3	(2)	1	1	42.1 m <sup>2</sup>
Plot H	BH 03	BH3.MA.L03.08	1B1P.TA	1B1P	Market	Single	BH3	(2)	1	1	42.1 m <sup>2</sup>
Plot H	BH 03	BH3.MA.L03.09	1B2P.TB	1B2P	Market	Dual	BH3	(2)	1	2	52.3 m <sup>2</sup>
BH 03: 9									13	20	534.6 m <sup>2</sup>
Plot H	BH 04	BH3.MA.L04.01	2B4P.TA	2B4P	Market	Dual	BH3	(2)	2	3	72.9 m <sup>2</sup>
Plot H	BH 04	BH3.MA.L04.02	2B4P.TB	2B4P	Market	Dual	BH3	(2)	2	3	73.3 m <sup>2</sup>
Plot H	BH 04	BH3.MA.L04.03	1B2P.TA	1B2P	Market	Single	BH3	(2)	1	2	53.5 m <sup>2</sup>
Plot H	BH 04	BH3.MA.L04.04	2B4P.TB.H	2B4P	Market	Dual	BH3	(2)	2	3	73.3 m <sup>2</sup>
Plot H	BH 04	BH3.MA.L04.05	2B4P.TA.H	2B4P	Market	Dual	BH3	(2)	2	3	72.9 m <sup>2</sup>
Plot H	BH 04	BH3.MA.L04.06	1B2P.TB.H	1B2P	Market	Dual	BH3	(2)	1	2	52.3 m <sup>2</sup>
Plot H	BH 04	BH3.MA.L04.07	1B1P.TA.H	1B1P	Market	Single	BH3	(2)	1	1	42.1 m <sup>2</sup>
Plot H	BH 04	BH3.MA.L04.08	1B1P.TA	1B1P	Market	Single	BH3	(2)	1	1	42.1 m <sup>2</sup>
Plot H	BH 04	BH3.MA.L04.09	1B2P.TB	1B2P	Market	Dual	BH3	(2)	1	2	52.3 m <sup>2</sup>
BH 04: 9									13	20	534.6 m <sup>2</sup>
Plot H	BH3 05	BH3.MA.L05.01	3B5P.TB	3B5P	Market	Dual	BH3	(2)	3	4	101.1 m <sup>2</sup>
Plot H	BH3 05	BH3.MA.L05.02	3B5P.TB.H	3B5P	Market	Dual	BH3	(2)	3	4	101.1 m <sup>2</sup>
Plot H	BH3 05	BH3.MA.L05.03	3B5P.TA.H	3B5P	Market	Dual	BH3	(2)	3	4	96.9 m <sup>2</sup>
Plot H	BH3 05	BH3.MA.L05.04	3B5P.TA	3B5P	Market	Dual	BH3	(2)	3	4	96.9 m <sup>2</sup>
BH3 05: 4									12	16	395.9 m <sup>2</sup>
									64	96	2537.7 m <sup>2</sup>

# Unit Types Schedule + Storage and Bedroom Schedule

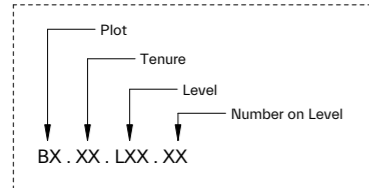
## Plot H3

See codes below for Name and Number:

**Name:**



**Number:**



Tenure:  
 MA = Market  
 SO = Shared Ownership  
 SR = Social Rent

BH3 - Unit Types Schedule	
Name	Number
1B1P.TA	BH3.MA.L02.08
1B1P.TA	BH3.MA.L03.08
1B1P.TA	BH3.MA.L04.08
1B1P.TA: 3	
1B1P.TA.H	BH3.MA.L02.07
1B1P.TA.H	BH3.MA.L03.07
1B1P.TA.H	BH3.MA.L04.07
1B1P.TA.H: 3	
1B2P.TA	BH3.SO.L01.03
1B2P.TA	BH3.MA.L02.03
1B2P.TA	BH3.MA.L03.03
1B2P.TA	BH3.MA.L04.03
1B2P.TA: 4	
1B2P.TB	BH3.MA.L02.09
1B2P.TB	BH3.MA.L03.09
1B2P.TB	BH3.MA.L04.09
1B2P.TB: 3	
1B2P.TB.H	BH3.MA.L02.06
1B2P.TB.H	BH3.MA.L03.06
1B2P.TB.H	BH3.MA.L04.06
1B2P.TB.H: 3	
2B3P.TA.WCA	BH3.SO.L01.07
2B3P.TA.WCA: 1	
2B3P.TA.WCA.H	BH3.SO.L01.06
2B3P.TA.WCA.H: 1	
2B4P.TA	BH3.SO.L01.01
2B4P.TA	BH3.MA.L02.01
2B4P.TA	BH3.MA.L03.01
2B4P.TA	BH3.MA.L04.01
2B4P.TA: 4	
2B4P.TA.H	BH3.SO.L01.05
2B4P.TA.H	BH3.MA.L02.05
2B4P.TA.H	BH3.MA.L03.05
2B4P.TA.H	BH3.MA.L04.05
2B4P.TA.H: 4	
2B4P.TB	BH3.SO.L01.02
2B4P.TB	BH3.MA.L02.02
2B4P.TB	BH3.MA.L03.02
2B4P.TB	BH3.MA.L04.02
2B4P.TB: 4	
2B4P.TB.H	BH3.SO.L01.04
2B4P.TB.H	BH3.MA.L02.04
2B4P.TB.H	BH3.MA.L03.04
2B4P.TB.H	BH3.MA.L04.04
2B4P.TB.H: 4	
3B5P.TA	BH3.MA.L05.04
3B5P.TA: 1	
3B5P.TA.H	BH3.MA.L05.03
3B5P.TA.H: 1	
3B5P.TB	BH3.MA.L05.01
3B5P.TB: 1	
3B5P.TB.H	BH3.MA.L05.02
3B5P.TB.H: 1	
Grand total: 38	

TOTAL NUMBER OF UNIT TYPES = 8

Note:  
 - Handed units are mirrored images and as such, are the same unit type ie, 1B2P.TA is the same unit as 1B2P.TA.H

BH3 - Storage and Bedroom Schedule			
Name	Space	Occupancy	Area
1B1P.TA	Bedroom 01	Single	12.3 m <sup>2</sup>
1B1P.TA	Store		1.5 m <sup>2</sup>
1B2P.TA	Bedroom 01	Double	12.3 m <sup>2</sup>
1B2P.TA	Store		1.6 m <sup>2</sup>
1B2P.TB	Bedroom 01	Double	11.6 m <sup>2</sup>
1B2P.TB	Store		1.5 m <sup>2</sup>
2B3P.TA.WCA	Bedroom 01	Double	19.9 m <sup>2</sup>
2B3P.TA.WCA	Bedroom 02	Single	10.6 m <sup>2</sup>
2B3P.TA.WCA	Store		2.0 m <sup>2</sup>
2B4P.TA	Bedroom 01	Double	12.3 m <sup>2</sup>
2B4P.TA	Bedroom 02	Double	12.1 m <sup>2</sup>
2B4P.TA	Store		2.0 m <sup>2</sup>
2B4P.TB	Bedroom 01	Double	12.6 m <sup>2</sup>
2B4P.TB	Bedroom 02	Double	11.5 m <sup>2</sup>
2B4P.TB	Store		2.0 m <sup>2</sup>
3B5P.TA	Bedroom 01	Double	12.2 m <sup>2</sup>
3B5P.TA	Bedroom 02	Double	12.5 m <sup>2</sup>
3B5P.TA	Bedroom 03	Single	10.1 m <sup>2</sup>
3B5P.TA	Store		2.5 m <sup>2</sup>
3B5P.TB	Bedroom 01	Double	14.2 m <sup>2</sup>
3B5P.TB	Bedroom 02	Double	11.5 m <sup>2</sup>
3B5P.TB	Bedroom 03	Single	9.2 m <sup>2</sup>
3B5P.TB	Store		2.5 m <sup>2</sup>

Note:  
 - Same storage and bedroom areas for all handed units  
 - For wheel chair adapted layouts, refer to drawings for storage area

# Accommodation Mix

## Plot I Unit Schedule

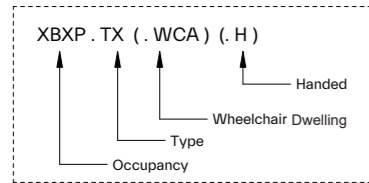
Bi - NIA Residential Room Schedule											Bi - NIA Residential Area...
Plot	Level	Number	Type	Occupancy	Dwelling Tenure	Aspect	Core	Part M4	Bedrooms	Habitable Rooms	Area
Plot i	Bi 00	Bi.SO.L00.01	2B4P.TA.M	2B4P	Shared Ownership	Dual	-	(2)	0	1	45.6 m <sup>2</sup>
Plot i	Bi 00	Bi.SO.L00.02	2B4P.TA.M.H	2B4P	Shared Ownership	Dual	-	(2)	0	1	45.6 m <sup>2</sup>
Bi 00: 2									0	2	91.3 m <sup>2</sup>
Plot i	Bi 01	Bi.MA.L01.01	1B2P.TA	1B2P	Market	Dual	Bi	(2)	1	2	53.1 m <sup>2</sup>
Plot i	Bi 01	Bi.MA.L01.02	2B4P.TD.WCA	2B4P	Market	Dual	Bi	(3)a	2	3	77.9 m <sup>2</sup>
Plot i	Bi 01	Bi.MA.L01.03	2B4P.TB.WCA.H	2B4P	Market	Dual	Bi	(3)a	2	3	53.1 m <sup>2</sup>
Plot i	Bi 01	Bi.MA.L01.04	1B2P.TA.H	1B2P	Market	Dual	Bi	(2)	1	2	45.0 m <sup>2</sup>
Plot i	Bi 01	Bi.SO.L01.01	2B4P.TA.M	2B4P	Shared Ownership	Dual	-	(2)	2	2	45.0 m <sup>2</sup>
Plot i	Bi 01	Bi.SO.L01.02	2B4P.TA.M.H	2B4P	Shared Ownership	Dual	-	(2)	2	2	77.5 m <sup>2</sup>
Plot i	Bi 01	Bi.SO.L01.03	2B4P.TC	2B4P	Shared Ownership	Triple	Bi	(2)	2	3	78.5 m <sup>2</sup>
Bi 01: 7									12	17	430.1 m <sup>2</sup>
Plot i	Bi 02	Bi.MA.L02.01	1B2P.TA	1B2P	Market	Dual	Bi	(2)	1	2	53.1 m <sup>2</sup>
Plot i	Bi 02	Bi.MA.L02.02	2B4P.TC	2B4P	Market	Triple	Bi	(2)	2	3	77.5 m <sup>2</sup>
Plot i	Bi 02	Bi.MA.L02.03	2B4P.TD.WCA	2B4P	Market	Dual	Bi	(3)a	2	3	78.5 m <sup>2</sup>
Plot i	Bi 02	Bi.MA.L02.04	2B4P.TD.WCA.H	2B4P	Market	Dual	Bi	(3)a	2	3	78.5 m <sup>2</sup>
Plot i	Bi 02	Bi.MA.L02.05	2B4P.TC.H	2B4P	Market	Triple	Bi	(2)	2	3	77.5 m <sup>2</sup>
Plot i	Bi 02	Bi.MA.L02.06	1B2P.TA.H	1B2P	Market	Dual	Bi	(2)	1	2	53.1 m <sup>2</sup>
Bi 02: 6									10	16	418.1 m <sup>2</sup>
Plot i	Bi 03	Bi.MA.L03.01	1B2P.TA	1B2P	Market	Dual	Bi	(2)	1	2	53.1 m <sup>2</sup>
Plot i	Bi 03	Bi.MA.L03.02	2B4P.TC	2B4P	Market	Triple	Bi	(2)	2	3	77.5 m <sup>2</sup>
Plot i	Bi 03	Bi.MA.L03.03	2B4P.TD.WCA	2B4P	Market	Dual	Bi	(3)a	2	3	78.5 m <sup>2</sup>
Plot i	Bi 03	Bi.MA.L03.04	2B4P.TD.WCA.H	2B4P	Market	Dual	Bi	(3)a	2	3	78.5 m <sup>2</sup>
Plot i	Bi 03	Bi.MA.L03.05	2B4P.TC.H	2B4P	Market	Triple	Bi	(2)	2	3	77.5 m <sup>2</sup>
Plot i	Bi 03	Bi.MA.L03.06	1B2P.TA.H	1B2P	Market	Dual	Bi	(2)	1	2	53.1 m <sup>2</sup>
Bi 03: 6									10	16	418.1 m <sup>2</sup>
Plot i	Bi 04	Bi.MA.L04.01	1B2P.TA	1B2P	Market	Dual	Bi	(2)	1	2	53.1 m <sup>2</sup>
Plot i	Bi 04	Bi.MA.L04.02	2B4P.TC	2B4P	Market	Triple	Bi	(2)	2	3	77.5 m <sup>2</sup>
Plot i	Bi 04	Bi.MA.L04.03	2B4P.TD.WCA	2B4P	Market	Dual	Bi	(3)a	2	3	78.5 m <sup>2</sup>
Plot i	Bi 04	Bi.MA.L04.04	2B4P.TD.WCA.H	2B4P	Market	Dual	Bi	(3)a	2	3	78.5 m <sup>2</sup>
Plot i	Bi 04	Bi.MA.L04.05	2B4P.TC.H	2B4P	Market	Triple	Bi	(2)	2	3	77.5 m <sup>2</sup>
Plot i	Bi 04	Bi.MA.L04.06	1B2P.TA.H	1B2P	Market	Dual	Bi	(2)	1	2	53.1 m <sup>2</sup>
Bi 04: 6									10	16	418.1 m <sup>2</sup>
Plot i	Bi 05	Bi.MA.L05.01	1B2P.TA	1B2P	Market	Dual	Bi	(2)	1	2	53.1 m <sup>2</sup>
Plot i	Bi 05	Bi.MA.L05.02	2B4P.TC	2B4P	Market	Triple	Bi	(2)	2	3	77.5 m <sup>2</sup>
Plot i	Bi 05	Bi.MA.L05.03	2B4P.TD.WCA	2B4P	Market	Dual	Bi	(3)a	2	3	78.5 m <sup>2</sup>
Plot i	Bi 05	Bi.MA.L05.04	2B4P.TD.WCA.H	2B4P	Market	Dual	Bi	(3)a	2	3	78.5 m <sup>2</sup>
Plot i	Bi 05	Bi.MA.L05.05	2B4P.TC.H	2B4P	Market	Triple	Bi	(2)	2	3	77.5 m <sup>2</sup>
Plot i	Bi 05	Bi.MA.L05.06	1B2P.TA.H	1B2P	Market	Dual	Bi	(2)	1	2	53.1 m <sup>2</sup>
Bi 05: 6									10	16	418.1 m <sup>2</sup>
Plot i	Bi 06	Bi.MA.L06.01	1B2P.TA	1B2P	Market	Dual	Bi	(2)	1	2	53.1 m <sup>2</sup>
Plot i	Bi 06	Bi.MA.L06.02	2B4P.TC	2B4P	Market	Triple	Bi	(2)	2	3	77.5 m <sup>2</sup>
Plot i	Bi 06	Bi.MA.L06.03	2B4P.TD.WCA	2B4P	Market	Dual	Bi	(3)a	2	3	78.5 m <sup>2</sup>
Plot i	Bi 06	Bi.MA.L06.04	2B3P.TA.H	2B3P	Market	Dual	Bi	(2)	2	3	69.4 m <sup>2</sup>
Plot i	Bi 06	Bi.MA.L06.05	1B2P.TA.H	1B2P	Market	Dual	Bi	(2)	1	2	53.1 m <sup>2</sup>
Bi 06: 5									8	13	331.5 m <sup>2</sup>
Plot i	Bi 07	Bi.MA.L07.01	1B2P.TA	1B2P	Market	Dual	Bi	(2)	1	2	53.1 m <sup>2</sup>
Plot i	Bi 07	Bi.MA.L07.02	2B3P.TA	2B3P	Market	Dual	Bi	(2)	2	3	69.4 m <sup>2</sup>
Plot i	Bi 07	Bi.MA.L07.03	2B4P.TB.WCA.H	2B4P	Market	Dual	Bi	(3)a	2	3	78.6 m <sup>2</sup>
Plot i	Bi 07	Bi.MA.L07.04	1B2P.TA.H	1B2P	Market	Dual	Bi	(2)	1	2	53.8 m <sup>2</sup>
Bi 07: 4									6	10	254.8 m <sup>2</sup>
Plot i	Bi 08	Bi.MA.L08.01	1B2P.TA	1B2P	Market	Dual	Bi	(2)	1	2	53.8 m <sup>2</sup>
Plot i	Bi 08	Bi.MA.L08.02	2B4P.TB.WCA	2B4P	Market	Dual	Bi	(3)a	2	3	78.6 m <sup>2</sup>
Plot i	Bi 08	Bi.MA.L08.03	2B4P.TB.WCA.H	2B4P	Market	Dual	Bi	(3)a	2	3	78.6 m <sup>2</sup>
Plot i	Bi 08	Bi.MA.L08.04	1B2P.TA.H	1B2P	Market	Dual	Bi	(2)	1	2	53.8 m <sup>2</sup>
Bi 08: 4									6	10	264.7 m <sup>2</sup>
Plot i	Bi 09	Bi.MA.L09.01	1B2P.TA	1B2P	Market	Dual	Bi	(2)	1	2	53.8 m <sup>2</sup>
Plot i	Bi 09	Bi.MA.L09.02	2B4P.TB.WCA	2B4P	Market	Dual	Bi	(3)a	2	3	78.6 m <sup>2</sup>
Plot i	Bi 09	Bi.MA.L09.03	2B4P.TB.WCA.H	2B4P	Market	Dual	Bi	(3)a	2	3	78.6 m <sup>2</sup>
Plot i	Bi 09	Bi.MA.L09.04	1B2P.TA.H	1B2P	Market	Dual	Bi	(2)	1	2	53.8 m <sup>2</sup>
Bi 09: 4									6	10	264.7 m <sup>2</sup>
Plot i	Bi 10	Bi.MA.L10.01	1B2P.TA	1B2P	Market	Dual	Bi	(2)	1	2	53.8 m <sup>2</sup>
Plot i	Bi 10	Bi.MA.L10.02	2B4P.TB.WCA	2B4P	Market	Dual	Bi	(3)a	2	3	78.6 m <sup>2</sup>
Plot i	Bi 10	Bi.MA.L10.03	2B4P.TB.WCA.H	2B4P	Market	Dual	Bi	(3)a	2	3	78.6 m <sup>2</sup>
Plot i	Bi 10	Bi.MA.L10.04	1B2P.TA.H	1B2P	Market	Dual	Bi	(2)	1	2	53.8 m <sup>2</sup>
Bi 10: 4									6	10	264.7 m <sup>2</sup>
									84	136	3574.5 m <sup>2</sup>

# Unit Types Schedule + Storage and Bedroom Schedule

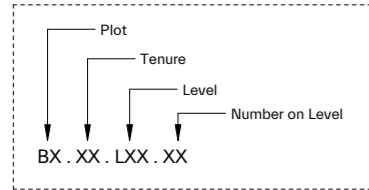
## Plot i

See codes below for Name and Number:

**Name:**



**Number:**



Tenure:  
 MA = Market  
 SO = Shared Ownership  
 SR = Social Rent

Bi - Unit Types Schedule	
Name	Number
1B2P.TA	Bi.MA.L01.01
1B2P.TA	Bi.MA.L02.01
1B2P.TA	Bi.MA.L03.01
1B2P.TA	Bi.MA.L04.01
1B2P.TA	Bi.MA.L05.01
1B2P.TA	Bi.MA.L06.01
1B2P.TA	Bi.MA.L07.01
1B2P.TA	Bi.MA.L08.01
1B2P.TA	Bi.MA.L09.01
1B2P.TA	Bi.MA.L10.01
1B2P.TA: 10	
1B2P.TA.H	Bi.MA.L01.03
1B2P.TA.H	Bi.MA.L02.06
1B2P.TA.H	Bi.MA.L03.06
1B2P.TA.H	Bi.MA.L04.06
1B2P.TA.H	Bi.MA.L05.06
1B2P.TA.H	Bi.MA.L06.05
1B2P.TA.H	Bi.MA.L07.04
1B2P.TA.H	Bi.MA.L08.04
1B2P.TA.H	Bi.MA.L09.04
1B2P.TA.H	Bi.MA.L10.04
1B2P.TA.H: 10	
2B3P.TA	Bi.MA.L07.02
2B3P.TA: 1	
2B3P.TA.H	Bi.MA.L06.04
2B3P.TA.H: 1	
2B4P.TA.M	Bi.SO.L00.01
2B4P.TA.M: 1	
2B4P.TA.M.H	Bi.SO.L00.02
2B4P.TA.M.H: 1	
2B4P.TB.WCA	Bi.MA.L08.02
2B4P.TB.WCA	Bi.MA.L09.02
2B4P.TB.WCA	Bi.MA.L10.02
2B4P.TB.WCA: 3	
2B4P.TB.WCA.H	Bi.MA.L01.02
2B4P.TB.WCA.H	Bi.MA.L07.03
2B4P.TB.WCA.H	Bi.MA.L08.03
2B4P.TB.WCA.H	Bi.MA.L09.03
2B4P.TB.WCA.H	Bi.MA.L10.03
2B4P.TB.WCA.H: 5	
2B4P.TC	Bi.MA.L02.02
2B4P.TC	Bi.MA.L03.02
2B4P.TC	Bi.MA.L04.02
2B4P.TC	Bi.MA.L05.02
2B4P.TC	Bi.MA.L06.02
2B4P.TC	Bi.SO.L01.03
2B4P.TC: 6	
2B4P.TC.H	Bi.MA.L02.05
2B4P.TC.H	Bi.MA.L03.05
2B4P.TC.H	Bi.MA.L04.05
2B4P.TC.H	Bi.MA.L05.05
2B4P.TC.H: 4	

2B4P.TD.WCA	Bi.MA.L02.03
2B4P.TD.WCA	Bi.MA.L03.03
2B4P.TD.WCA	Bi.MA.L04.03
2B4P.TD.WCA	Bi.MA.L05.03
2B4P.TD.WCA	Bi.MA.L06.03
2B4P.TD.WCA	Bi.SO.L01.04
2B4P.TD.WCA: 6	
2B4P.TD.WCA.H	Bi.MA.L02.04
2B4P.TD.WCA.H	Bi.MA.L03.04
2B4P.TD.WCA.H	Bi.MA.L04.04
2B4P.TD.WCA.H	Bi.MA.L05.04
2B4P.TD.WCA.H: 4	
Grand total: 52	

TOTAL NUMBER OF UNIT TYPES = 6

**Note:**  
 - Handed units are mirrored images and as such, are the same unit type ie, 1B2P.TA is the same unit as 1B2P.TA.H

Bi - Storage and Bedroom Schedule			
Name	Space	Occupancy	Area
1B2P.TA	Bedroom 01	Double	11.8 m <sup>2</sup>
1B2P.TA	Store		1.5 m <sup>2</sup>
2B3P.TA	Bedroom 01	Double	11.8 m <sup>2</sup>
2B3P.TA	Bedroom 02	Single	9.3 m <sup>2</sup>
2B3P.TA	Store		2.0 m <sup>2</sup>
2B4P.TA.M	Bedroom 01	Double	13.3 m <sup>2</sup>
2B4P.TA.M	Bedroom 02	Double	13.8 m <sup>2</sup>
2B4P.TA.M	Store		2.0 m <sup>2</sup>
2B4P.TB.WCA	Bedroom 01	Double	16.3 m <sup>2</sup>
2B4P.TB.WCA	Bedroom 02	Double	11.8 m <sup>2</sup>
2B4P.TB.WCA	Store		2.1 m <sup>2</sup>
2B4P.TC	Bedroom 01	Double	11.6 m <sup>2</sup>
2B4P.TC	Bedroom 02	Double	11.7 m <sup>2</sup>
2B4P.TC	Store		2.2 m <sup>2</sup>
2B4P.TD.WCA	Bedroom 01	Double	16.8 m <sup>2</sup>
2B4P.TD.WCA	Bedroom 02	Double	11.6 m <sup>2</sup>
2B4P.TD.WCA	Store		2.1 m <sup>2</sup>

**Note:**  
 - Same storage and bedroom areas for all handed units  
 - For wheel chair adapted layouts, refer to drawings for storage area

# Accommodation Mix

## Plot J Unit Schedule

BJ - NIA Residential Room Schedule										
Plot	Level	Number	Type	Occupancy	Dwelling Tenure	Aspect	Core	Part M4	Bedrooms	Habitable Rooms
Plot J	BJ H 00	BJ.SR.L00.01	3B6P.TA	3B6P	Social Rent	Dual	-	(2)	0	1
Plot J	BJ H 00	BJ.SR.L00.02	3B6P.TB	3B6P	Social Rent	Dual	-	(2)	0	2
Plot J	BJ H 00	BJ.SR.L00.03	4B6P.TA	4B6P	Social Rent	Dual	-	(2)	0	2
Plot J	BJ H 00	BJ.SR.L00.04	4B6P.TA	4B6P	Social Rent	Dual	-	(2)	0	2
Plot J	BJ H 00	BJ.SR.L00.05	4B6P.TA	4B6P	Social Rent	Dual	-	(2)	0	2
Plot J	BJ H 00	BJ.SR.L00.06	6B9P.TA	6b9p	Social Rent	Dual	-	(2)	0	2
Plot J	BJ H 00	BJ.SR.L00.07	6B9P.TA	6b9p	Social Rent	Dual	-	(2)	0	2
Plot J	BJ H 00	BJ.SR.L00.08	4B6P.TA	4B6P	Social Rent	Dual	-	(2)	0	2
Plot J	BJ H 00	BJ.SR.L00.09	4B6P.TA	4B6P	Social Rent	Dual	-	(2)	0	2
Plot J	BJ H 00	BJ.SR.L00.10	4B6P.TA	4B6P	Social Rent	Dual	-	(2)	0	2
Plot J	BJ H 00	BJ.SR.L00.11	4B6P.TA	4B6P	Social Rent	Dual	-	(2)	0	2
Plot J	BJ H 00	BJ.SR.L00.12	6B9P.TA	6b9p	Social Rent	Dual	-	(2)	0	2
Plot J	BJ H 00	BJ.SR.L00.13	6B9P.TA	6b9p	Social Rent	Dual	-	(2)	0	2
Plot J	BJ H 00	BJ.SR.L00.14	4B6P.TA	4B6P	Social Rent	Dual	-	(2)	0	2
Plot J	BJ H 00	BJ.SR.L00.15	4B6P.TA	4B6P	Social Rent	Dual	-	(2)	0	2
BJ H 00: 15									0	29
Plot J	BJ M 01	BJ.SR.L01.01	3B6P.TA	3B6P	Social Rent	Dual	-	(2)	3	4
Plot J	BJ M 01	BJ.SR.L01.02	3B6P.TB	3B6P	Social Rent	Dual	-	(2)	3	3
Plot J	BJ M 01	BJ.SR.L01.03	4B6P.TA	4B6P	Social Rent	Dual	-	(2)	3	3
Plot J	BJ M 01	BJ.SR.L01.04	4B6P.TA	4B6P	Social Rent	Dual	-	(2)	3	3
Plot J	BJ M 01	BJ.SR.L01.05	4B6P.TA	4B6P	Social Rent	Dual	-	(2)	3	3
Plot J	BJ M 01	BJ.SR.L01.06	6B9P.TA	6b9p	Social Rent	Dual	-	(2)	4	4
Plot J	BJ M 01	BJ.SR.L01.07	6B9P.TA	6b9p	Social Rent	Dual	-	(2)	4	4
Plot J	BJ M 01	BJ.SR.L01.08	4B6P.TA	4B6P	Social Rent	Dual	-	(2)	3	3
Plot J	BJ M 01	BJ.SR.L01.09	4B6P.TA	4B6P	Social Rent	Dual	-	(2)	3	3
Plot J	BJ M 01	BJ.SR.L01.10	4B6P.TA	4B6P	Social Rent	Dual	-	(2)	3	3
Plot J	BJ M 01	BJ.SR.L01.11	4B6P.TA	4B6P	Social Rent	Dual	-	(2)	3	3
Plot J	BJ M 01	BJ.SR.L01.12	6B9P.TA	6b9p	Social Rent	Dual	-	(2)	4	4
Plot J	BJ M 01	BJ.SR.L01.13	6B9P.TA	6b9p	Social Rent	Dual	-	(2)	4	4
Plot J	BJ M 01	BJ.SR.L01.14	4B6P.TA	4B6P	Social Rent	Dual	-	(2)	3	3
Plot J	BJ M 01	BJ.SR.L01.15	4B6P.TA	4B6P	Social Rent	Dual	-	(2)	3	3
BJ M 01: 15									49	50
Plot J	BJ M 02	BJ.SR.L02.01	3B5P.TA	3B5P	Social Rent	Triple	BJ	(2)	0	2
Plot J	BJ M 02	BJ.SR.L02.02	3B5P.TA	3B5P	Social Rent	Triple	BJ	(2)	0	2
Plot J	BJ M 02	BJ.SR.L02.06	6B9P.TA	6b9p	Social Rent	Triple	-	(2)	2	2
Plot J	BJ M 02	BJ.SR.L02.07	6B9P.TA	6b9p	Social Rent	Triple	-	(2)	2	2
Plot J	BJ M 02	BJ.SR.L02.12	6B9P.TA	6b9p	Social Rent	Triple	-	(2)	2	2
Plot J	BJ M 02	BJ.SR.L02.13	6B9P.TA	6b9p	Social Rent	Triple	-	(2)	2	2
BJ M 02: 6									8	12
Plot J	BJ M 03	BJ.SR.L03.01	3B5P.TA	3B5P	Social Rent	Triple	-	(2)	3	3
Plot J	BJ M 03	BJ.SR.L03.02	3B5P.TA	3B5P	Social Rent	Triple	-	(2)	3	3
BJ M 03: 2									6	6
Plot J	BJ M 04	BJ.SR.L04.01	3B5P.TB	3B5P	Social Rent	Triple	BJ	(2)	0	2
Plot J	BJ M 04	BJ.SR.L04.02	3B5P.TB	3B5P	Social Rent	Triple	BJ	(2)	0	2
BJ M 04: 2									0	4
Plot J	BJ M 05	BJ.SR.L05.01	3B5P.TB	3B5P	Social Rent	Triple	-	(2)	3	3
Plot J	BJ M 05	BJ.SR.L05.02	3B5P.TB	3B5P	Social Rent	Triple	-	(2)	3	3
BJ M 05: 2									6	6
									69	107

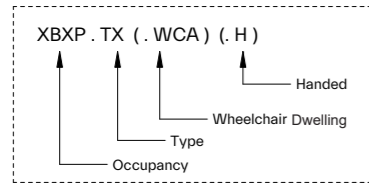
BJ - NIA Residential Area...
Area
55.9 m <sup>2</sup>
57.6 m <sup>2</sup>
61.1 m <sup>2</sup>
61.1 m <sup>2</sup>
61.1 m <sup>2</sup>
61.1 m <sup>2</sup>
61.1 m <sup>2</sup>
61.1 m <sup>2</sup>
61.1 m <sup>2</sup>
61.1 m <sup>2</sup>
61.1 m <sup>2</sup>
61.1 m <sup>2</sup>
61.1 m <sup>2</sup>
61.1 m <sup>2</sup>
61.1 m <sup>2</sup>
61.8 m <sup>2</sup>
908.8 m <sup>2</sup>
71.5 m <sup>2</sup>
73.5 m <sup>2</sup>
62.1 m <sup>2</sup>
62.1 m <sup>2</sup>
62.1 m <sup>2</sup>
62.1 m <sup>2</sup>
62.1 m <sup>2</sup>
62.1 m <sup>2</sup>
62.1 m <sup>2</sup>
62.1 m <sup>2</sup>
62.1 m <sup>2</sup>
62.1 m <sup>2</sup>
62.1 m <sup>2</sup>
62.1 m <sup>2</sup>
62.1 m <sup>2</sup>
62.5 m <sup>2</sup>
952.5 m <sup>2</sup>
61.9 m <sup>2</sup>
62.6 m <sup>2</sup>
39.1 m <sup>2</sup>
39.1 m <sup>2</sup>
39.1 m <sup>2</sup>
280.9 m <sup>2</sup>
61.8 m <sup>2</sup>
61.3 m <sup>2</sup>
123.1 m <sup>2</sup>
48.8 m <sup>2</sup>
49.5 m <sup>2</sup>
98.3 m <sup>2</sup>
59.4 m <sup>2</sup>
59.4 m <sup>2</sup>
118.8 m <sup>2</sup>
2482.3 m <sup>2</sup>

# Unit Types Schedule + Storage and Bedroom Schedule

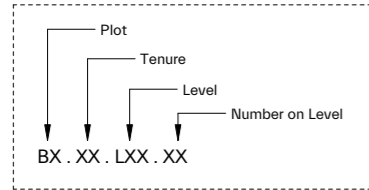
## Plot J

See codes below for Name and Number:

Name:



Number:



Tenure:  
 MA = Market  
 SO = Shared Ownership  
 SR = Social Rent

BJ - Unit Types Schedule	
Name	Number
3B5P.TA	BJ.SR.L02.01
3B5P.TA: 1	
3B5P.TA.H	BJ.SR.L02.02
3B5P.TA.H: 1	
3B5P.TB	BJ.SR.L04.01
3B5P.TB: 1	
3B5P.TB.H	BJ.SR.L04.02
3B5P.TB.H: 1	
3B6P.TA	BJ.SR.L00.01
3B6P.TA: 1	
3B6P.TB	BJ.SR.L00.02
3B6P.TB: 1	
4B6P.TA	BJ.SR.L00.04
4B6P.TA	BJ.SR.L00.08
4B6P.TA	BJ.SR.L00.10
4B6P.TA	BJ.SR.L00.14
4B6P.TA: 4	
4B6P.TA.H	BJ.SR.L00.03
4B6P.TA.H	BJ.SR.L00.05
4B6P.TA.H	BJ.SR.L00.09
4B6P.TA.H	BJ.SR.L00.11
4B6P.TA.H	BJ.SR.L00.15
4B6P.TA.H: 5	
6B9P.TA	BJ.SR.L00.06
6B9P.TA	BJ.SR.L00.12
6B9P.TA: 2	
6B9P.TA.H	BJ.SR.L00.07
6B9P.TA.H	BJ.SR.L00.13
6B9P.TA.H: 2	
Grand total: 19	

TOTAL NUMBER OF UNIT TYPES = 6

Note:

- Handed units are mirrored images and as such, are the same unit type ie, 1B2P.TA is the same unit as 1B2P.TA.H

BJ - Storage and Bedroom Schedule			
Name	Space	Occupancy	Area
3B5P.TA	Bedroom 01	Double	18.8 m <sup>2</sup>
3B5P.TA	Bedroom 02	Double	12.0 m <sup>2</sup>
3B5P.TA	Bedroom 03	Single	8.0 m <sup>2</sup>
3B5P.TA	Store		3.0 m <sup>2</sup>
3B5P.TB	Bedroom 01	Double	12.9 m <sup>2</sup>
3B5P.TB	Bedroom 02	Double	12.6 m <sup>2</sup>
3B5P.TB	Bedroom 03	Single	8.4 m <sup>2</sup>
3B5P.TB	Store		3.0 m <sup>2</sup>
3B6P.TA	Bedroom 01	Double	17.1 m <sup>2</sup>
3B6P.TA	Bedroom 02	Double	14.0 m <sup>2</sup>
3B6P.TA	Bedroom 03	Double	13.4 m <sup>2</sup>
3B6P.TA	Store		3.5 m <sup>2</sup>
3B6P.TB	Bedroom 01	Double	18.0 m <sup>2</sup>
3B6P.TB	Bedroom 02	Double	17.1 m <sup>2</sup>
3B6P.TB	Bedroom 03	Double	13.8 m <sup>2</sup>
3B6P.TB	Store		3.5 m <sup>2</sup>
4B6P.TA	Bedroom 01	Double	12.1 m <sup>2</sup>
4B6P.TA	Bedroom 02	Double	12.0 m <sup>2</sup>
4B6P.TA	Bedroom 03	Single	8.2 m <sup>2</sup>
4B6P.TA	Bedroom 04	Single	8.0 m <sup>2</sup>
4B6P.TA	Store		3.5 m <sup>2</sup>
6B9P.TA	Bedroom 01	Double	12.1 m <sup>2</sup>
6B9P.TA	Bedroom 02	Double	12.0 m <sup>2</sup>
6B9P.TA	Bedroom 03	Single	8.2 m <sup>2</sup>
6B9P.TA	Bedroom 04	Single	8.0 m <sup>2</sup>
6B9P.TA	Bedroom 05	Double	12.1 m <sup>2</sup>
6B9P.TA	Bedroom 06	Single	8.2 m <sup>2</sup>
6B9P.TA	Store		5.0 m <sup>2</sup>

Note:

- Same storage and bedroom areas for all handed units
- For wheel chair adapted layouts, refer to drawings for storage area