

# Plot I

## Illustrative Planting Typologies of the Public Realm

### Planting Typology

The courtyard space receives reasonable levels of sunlight so is suitable for plants that tolerate partial shade. The aim is to keep the planting species limited so it has a stronger characterisation. These would be loosely inspired by a woodland edge understorey feel. Pale flowers, with an emphasis on white and pale green, bring lightness into the space. Texture and seasonality will also be important.

The hedge would be indigenous species to contribute biodiversity benefits.

Climbers are the self-clinging varieties to help soften the appearance of walls and maximise the limited opportunities for biodiversity and to reinforce the greening of the courtyard.

Trees are small and medium size and are selected for seasonality with flowers in spring and good autumn colour.

### Trees

- Rhus typhina
- Pyrus Chanticleer
- Prunus padus

- Mahonia x 'Charity'
- Viburnum 'Bodnantense'
- Lonicera pileata
- Dryopteris filix mas
- Iris foetidissima
- Tellima grandiflora
- Luzula nivea
- Pachysandra terminalis
- Vinca minor Alba

### Hedges

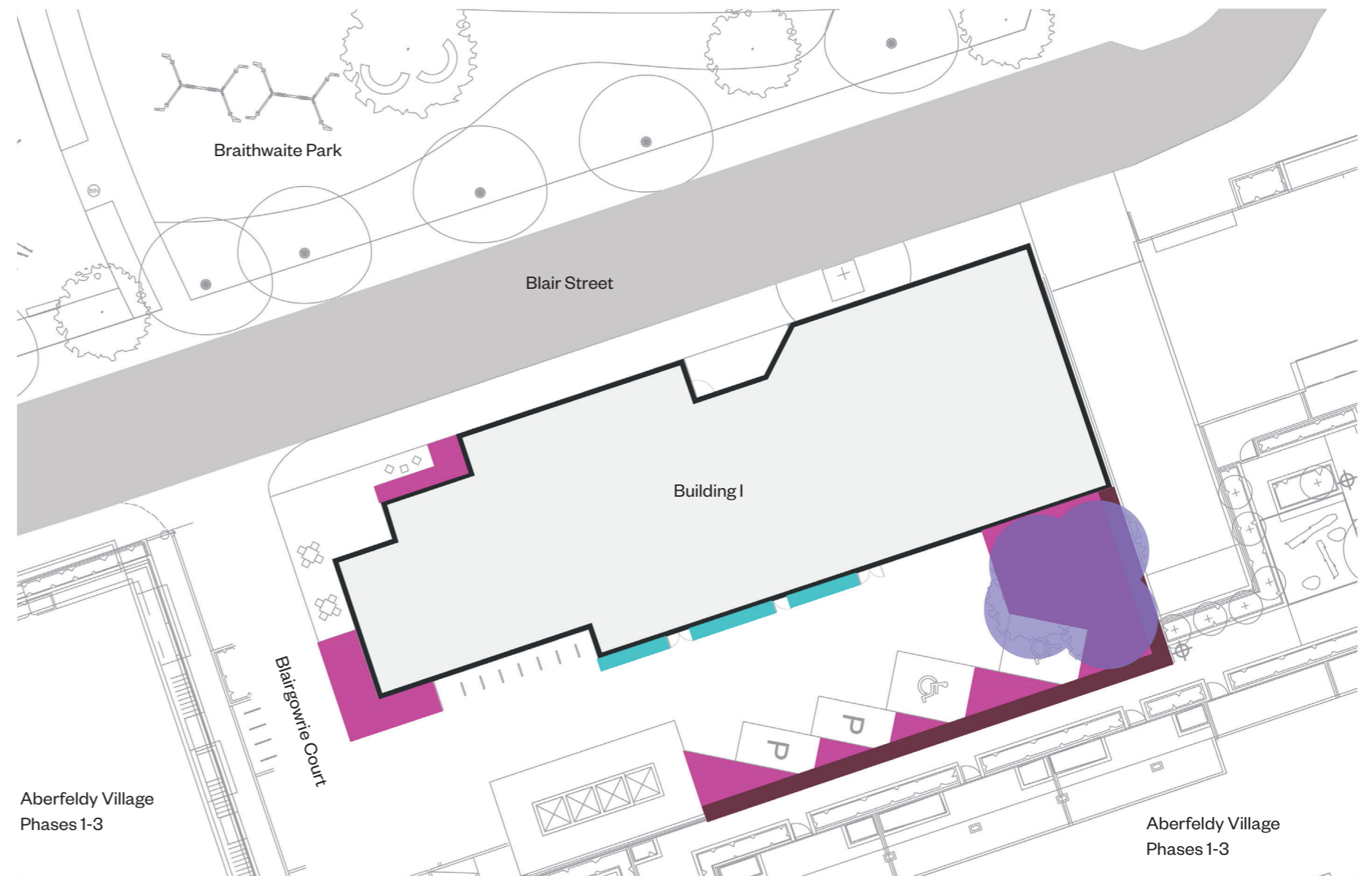
- Acer campestre
- Corylus avellana
- Viburnum opulus

### Shrubs and perennials

- Fatsia japonica
- Hydrangea macrophylla

### Climbers

- Parthenocisus henryana
- Hydrangea petiolaris



Planting Typologies diagram - Plot I public realm

- High Street tree
- Ornamental shrub and perennial planting mix
- Climbing planting mix
- Hedges

# Plot I

## Public Realm Planting Typology



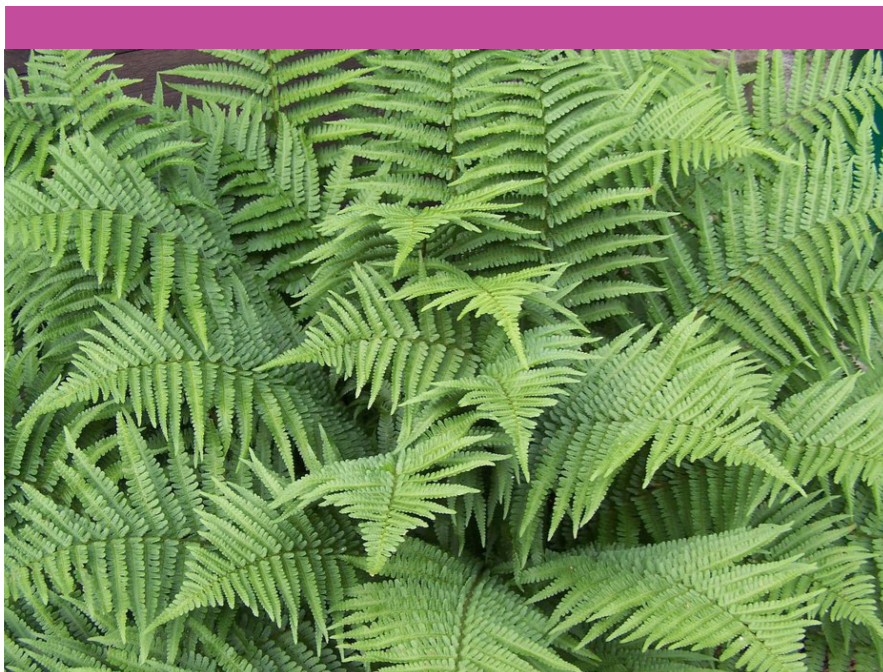
Rhus typhina



Prunus padus



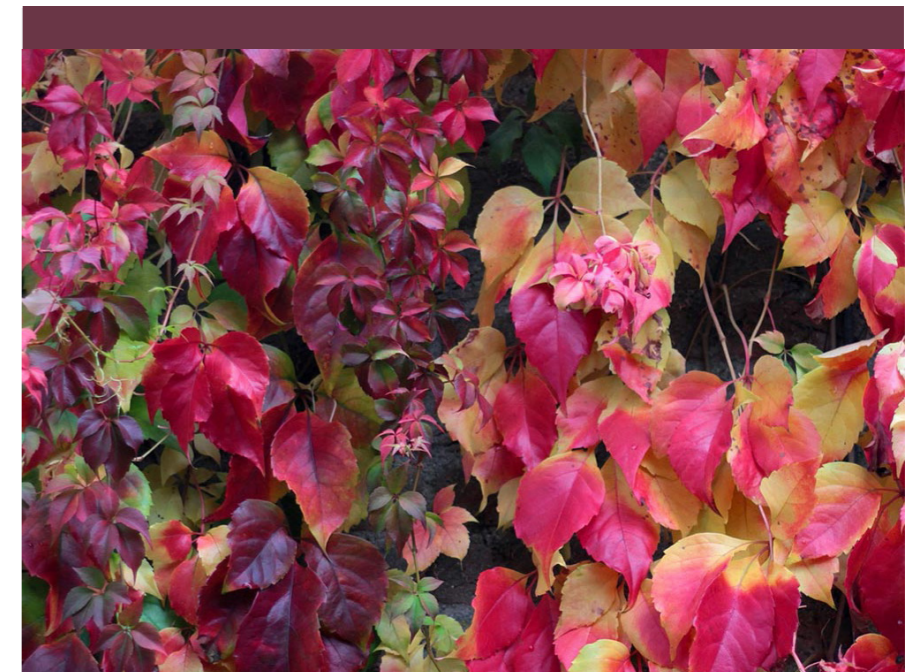
Viburnum opulus



Dryopteris filix mas



Tellima grandiflora



Parthenocissus henryana

# Plot I

## Illustrative Planting Typologies of the Roof Terraces

### Planting Typology

The concept of the planting palette for Plot I roof terraces is influenced by their locations. Since Building I is situated opposite Braithwaite Park. The selected plants have a more natural and woodland feeling. They are not only being hardy, with seasonality, required low maintenance, but also wildlife friendly and provide a relaxing sense of place which bring residents closer to the nature.

### Tree

*Betula nigra* (multi-stemmed)

*Amelanchier lamarckii* (multi-stemmed)

### Shrub

*Sarcococca hookeriana digyna*

### Herbaceous perennials

*Ajuga reptans* 'Braunherz'

*Digitalis ferruginea*

*Sesleria nitida*

*Deschampsia cespitosa*

*Lavandula angustifolia* 'Hidcote'

*Phlox paniculata* 'Blue evening'

### Climbers

*Humulus lupulus* 'Aureus'



Planting Typologies diagram - Plot I roof terraces

- Podiums and roof terrace tree (small)
- Ornamental shrub, grass and perennial planting mix
- Climbing planting mix

## Plot I

## Roof Terraces Planting Typology



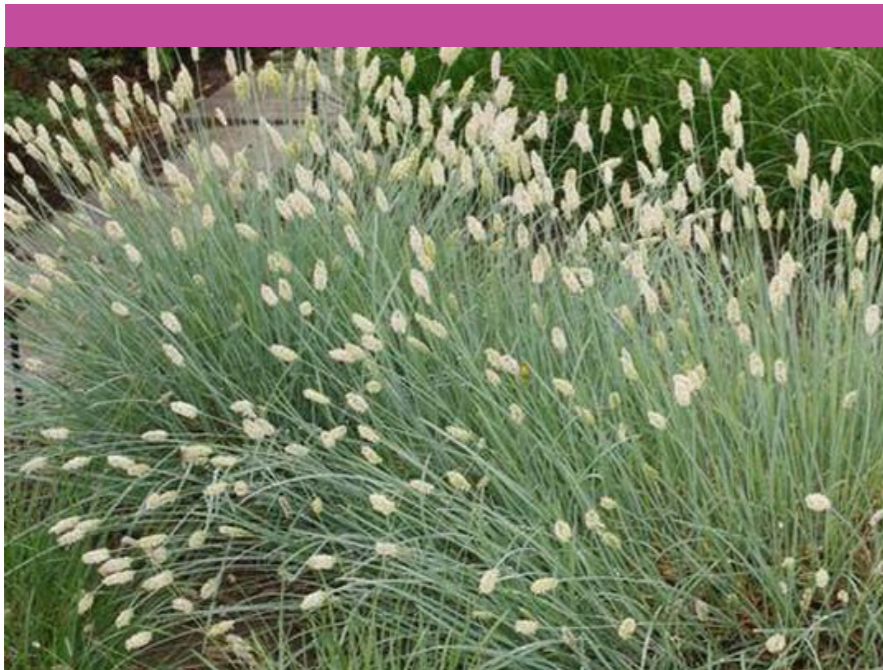
Betula nigra



Digitalis ferruginea



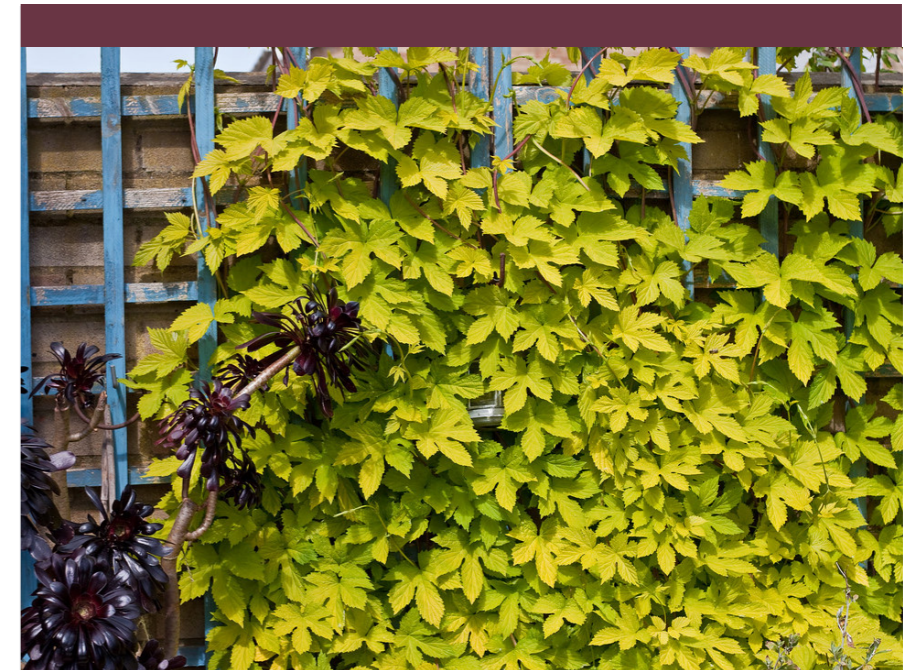
Phlox paniculata 'Blue evening'



Sesleria nitida



Ajuga reptans 'Braunherz'



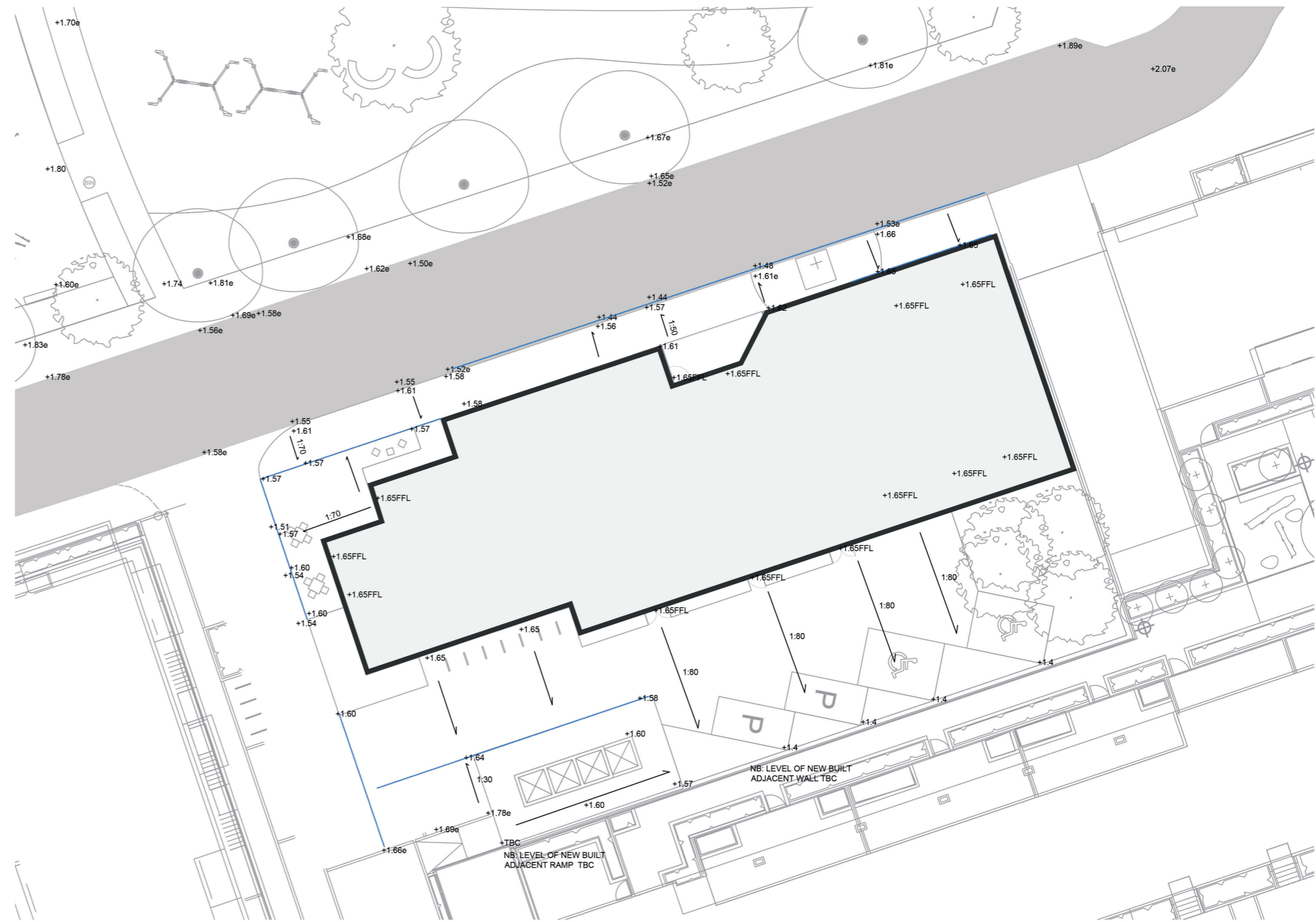
Humulus lupulus 'Aureus'

# Plot I

## Technical Details

### Levels and Drainage

It is anticipated that the levels remain very close to existing and that the existing drainage is reused with new connections.



Level and Drainage Strategy diagram