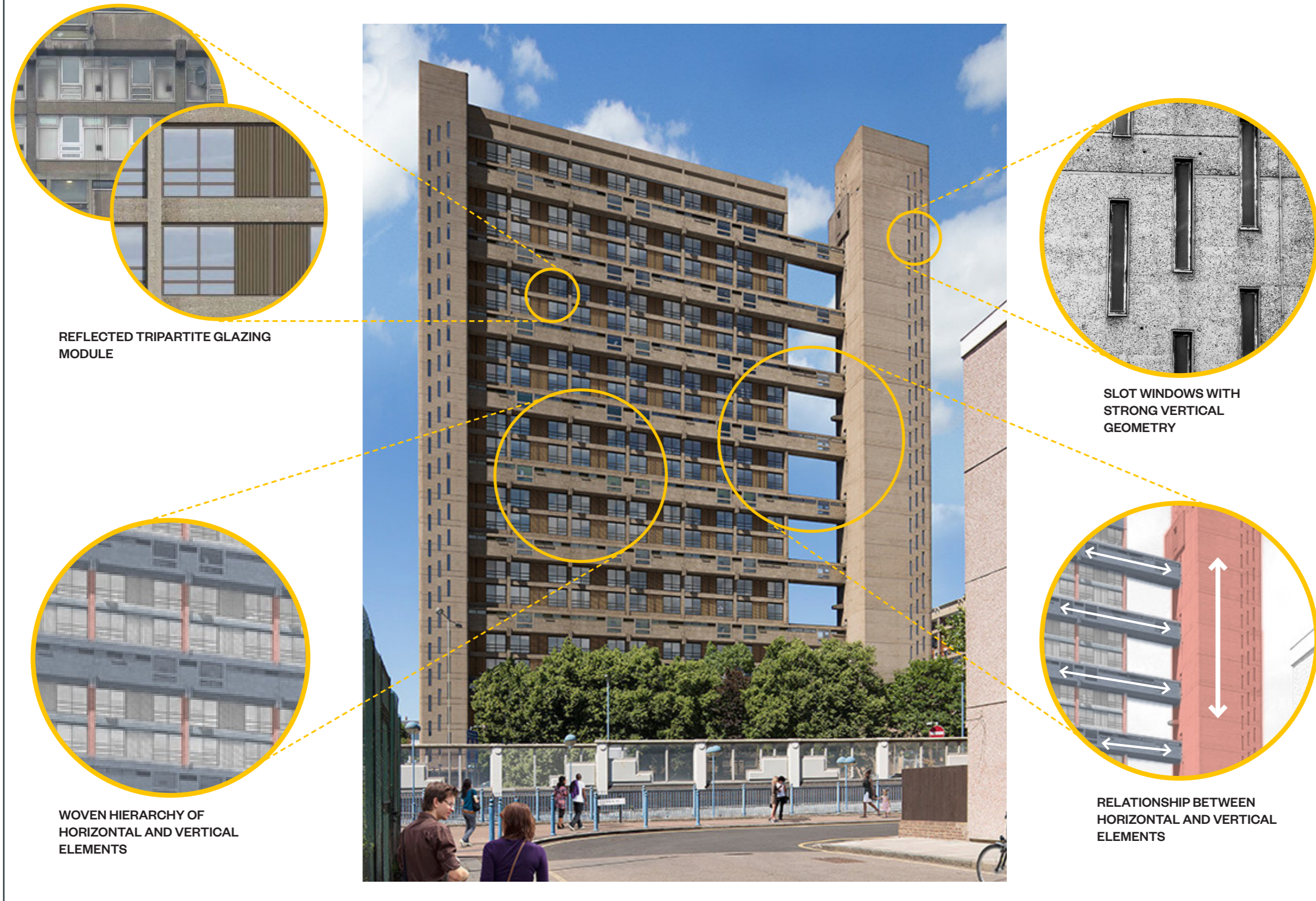


Elevational analysis of Balfron Tower (as presented to Historic England in February 2021)



Elevational analysis of Balfron Tower

BALFRON TOWER - EAST ELEVATION



Elevational analysis of Balfron Tower

BALFRON TOWER - WEST ELEVATION

SLOT WINDOWS WITH STRONG VERTICAL GEOMETRY

RELATIONSHIP BETWEEN HORIZONTAL AND VERTICAL ELEMENTS

CORRUGATED CONCRETE PLANTER-BALUSTRADES

TRIPARTITE EXPRESSION OF FENESTRATION

RECESSED BALCONIES

WOVEN HIERARCHY OF HORIZONTAL AND VERTICAL ELEMENTS

Elevational analysis of Balforn Tower



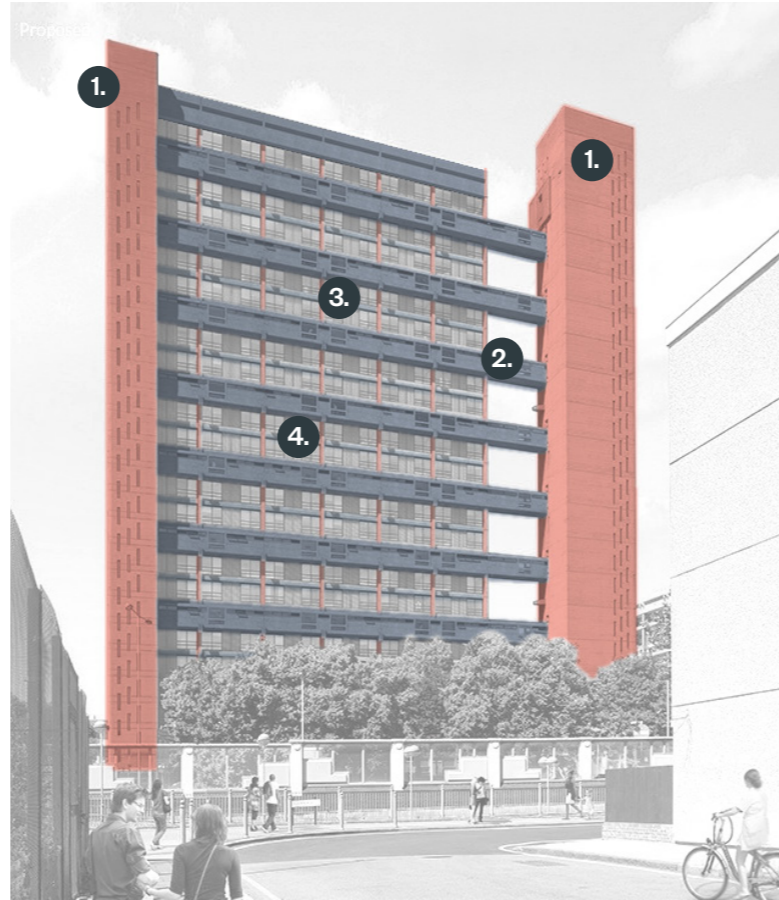
Elevational analysis of Balfron Tower

BALFRON TOWER - EAST ELEVATION

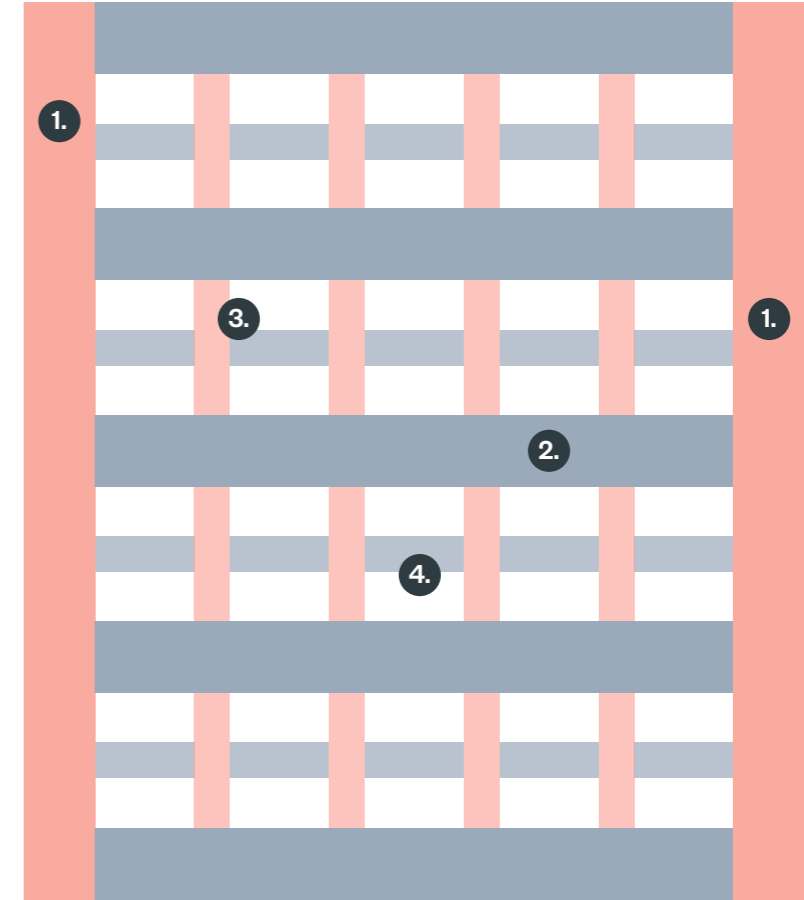
WEAVING HORIZONTAL & VERTICAL ELEMENTS



EAST ELEVATION



ANALYSIS OF HIERARCHY



WEAVING HORIZONTAL AND VERTICAL ELEMENTS

EAST ELEVATION

1. Strong Vertical 'book-ends' at the north and south.
2. Access galleries every third floor are expressed as prominent horizontal elements.
3. Two-storey vertical elements sit proud of horizontal fascia (4.)
4. Horizontal lattice sits behind two-storey vertical elements (3.)

Elevational analysis of Balfron Tower

BALFRON TOWER - WEST ELEVATION

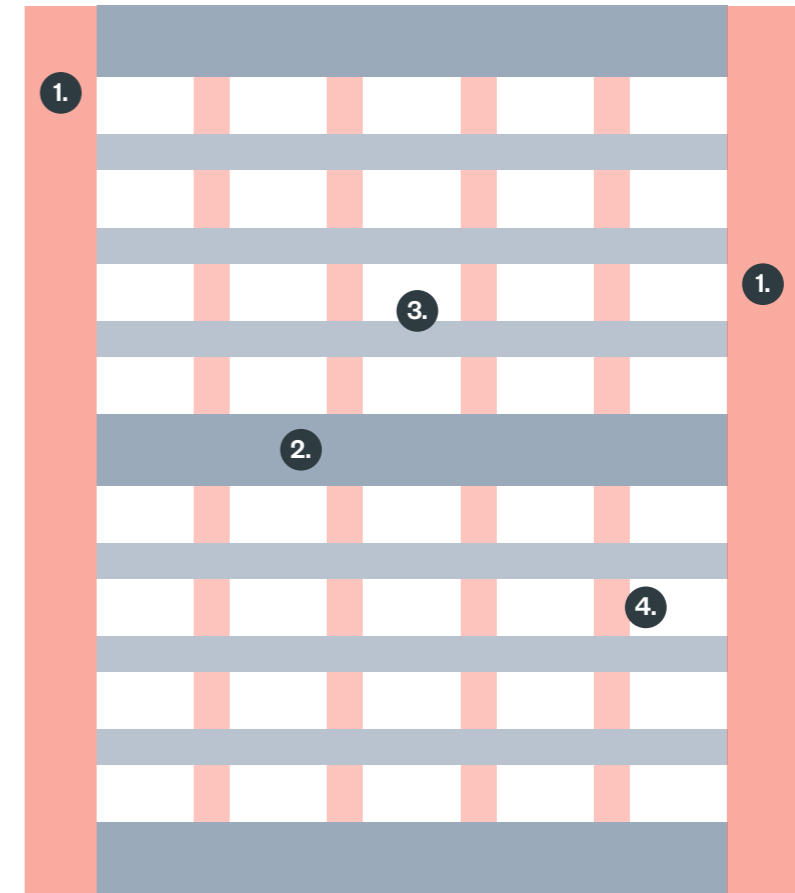
WEAVING HORIZONTAL & VERTICAL ELEMENTS



WEST ELEVATION



ANALYSIS OF HIERARCHY



WEAVING HORIZONTAL AND VERTICAL ELEMENTS

WEST ELEVATION

1. Strong Vertical 'book-ends' at the north and south.
2. Top, middle and bottom expressed as primary horizontal elements.
3. Pre-cast horizontal fascias expressing floor levels.
4. Vertical elements express partitions between apartments.



POPLARWORKS

CYCLE CAFE

ABERFELDY

JOLLYS GREEN

ECOWORLD
LONDON
CREATING TOMORROW & BEYOND

POPLAR HARCA

ABERFELDY VILLAGE MASTERPLAN