

## Streetscape

### Design Development: Openings

#### Primary Precast Language

The base of the building has arranged a series of 'primary' openings to its fabric. Studies explored various expressions of this, both in size and modulation but also material treatments. A precast concrete language was favoured, utilising piers and bands to articulate the primary façade language.



Shopfront precedents

Option 01



Option 04



Option 07



Option 02



Option 05



Option 08



Option 03



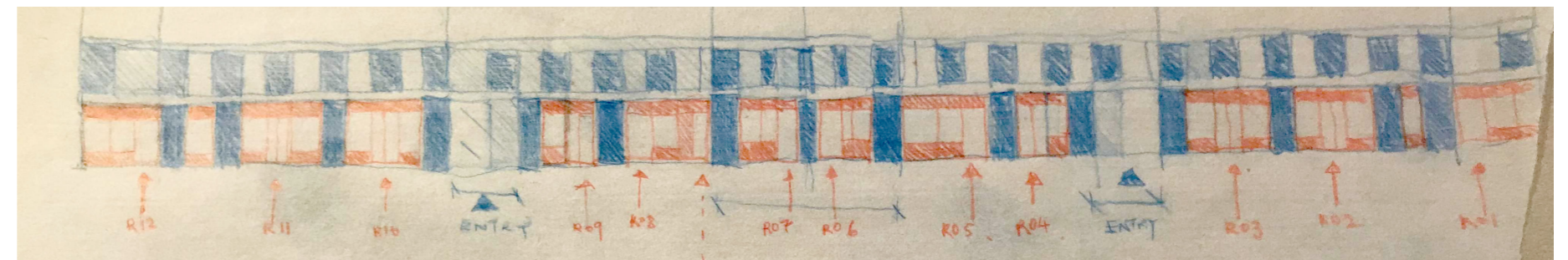
Option 06



Option 09



Studies on facade material treatment



Studies on facade openings and precast primary setting out



## Streetscape

### Design Development: Openings

#### Secondary Metalwork Language

Within the precast openings, a series of secondary metalwork frontages were established to help define each individual retail space. These are coordinated to a series of datums and modules, allowing provision for pragmatic elements such as ventilation, servicing, doors, stall risers etc and to ensure a robust strategy that could handle this urban street side condition.

Understanding these constraints have allowed opportunity for more expressive moments and to identify how the modularity of the façade would allow variations in its openings. This is a key part of the existing street and successful in delivering moments of character specific to each vendor's retail use. Whilst the future uses of each unit across the proposal is as yet undefined, this modulation provides a degree of flexibility in the future fit out.

- A** Primary precast piers
- B** Primary precast horizontal banding and corncing
- C** Glazing, windows and entrance modules
- D** Stall riser and integrated furniture
- E** Overhead fascia panel and awning zone
- F** Ventilation and signage zone



Shopfront precedents



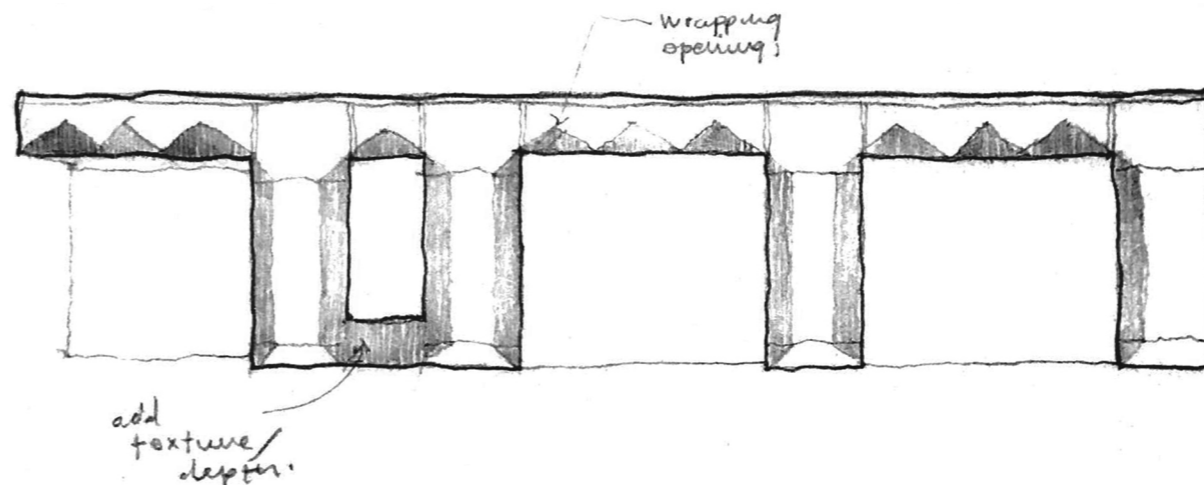
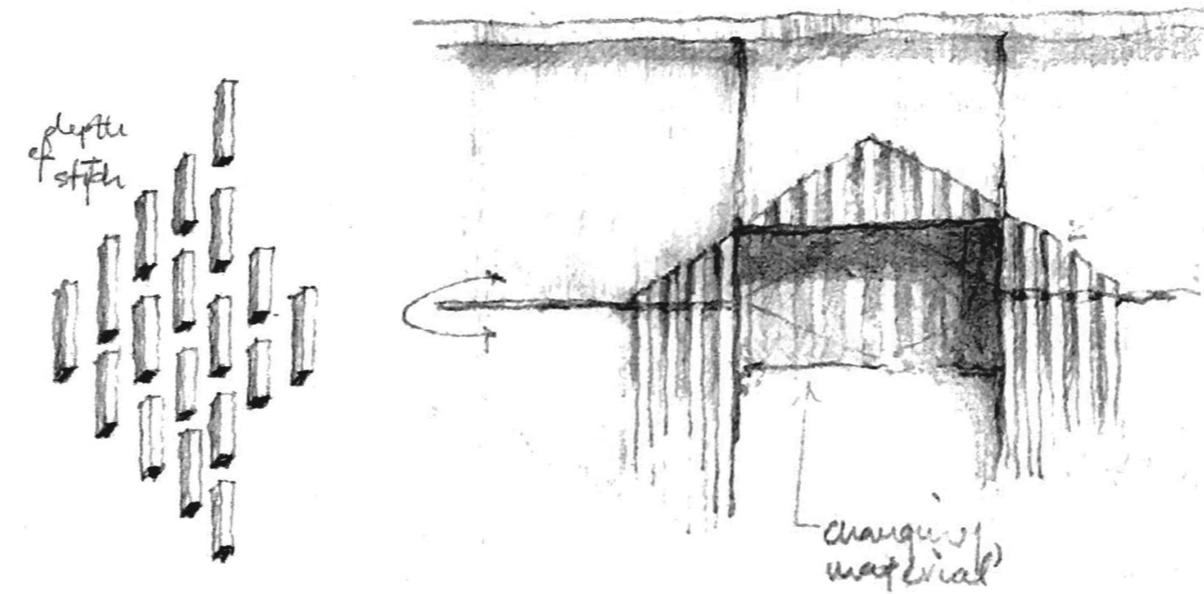
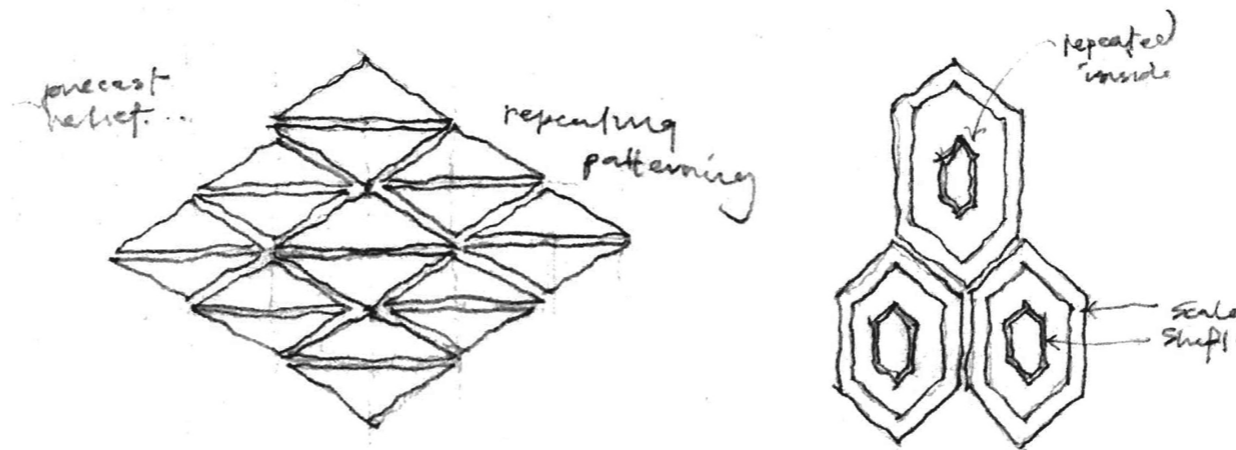
Coordinating datums of retail fronts and facade



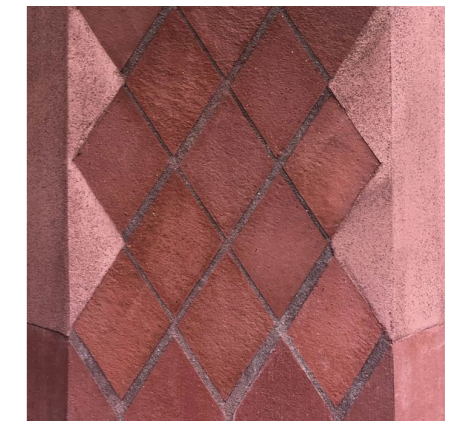
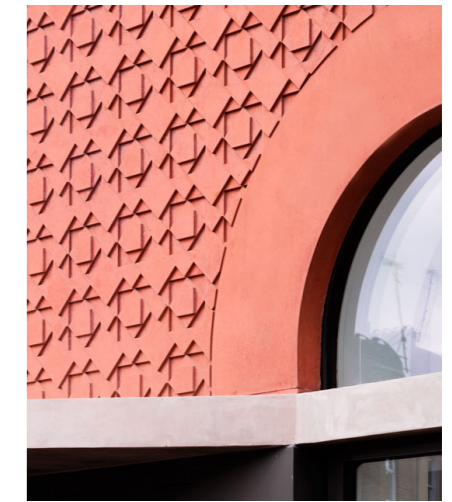
# Streetscape

## Design Development: Motif

Sketch studies explored an ornamental expression to the precast, one that could reference the Kantha tradition whilst also deriving a contemporary response for the future of the high street



Sketch studies of facade motif development



Character References