

# Town Square

## Capacity



**Movie in Town Square**

200 lawn chairs and movie screen



**Fashion show**

Catwalk and 180 spectators



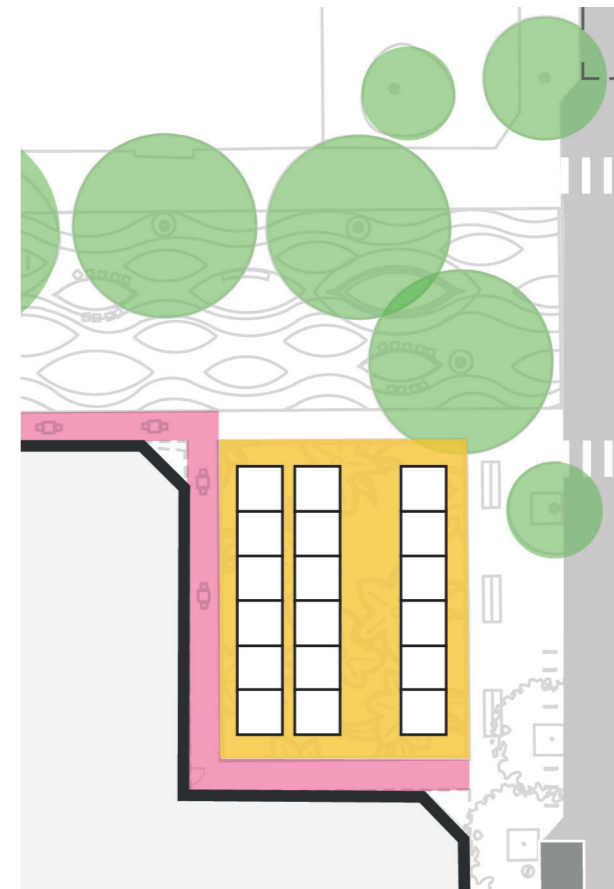
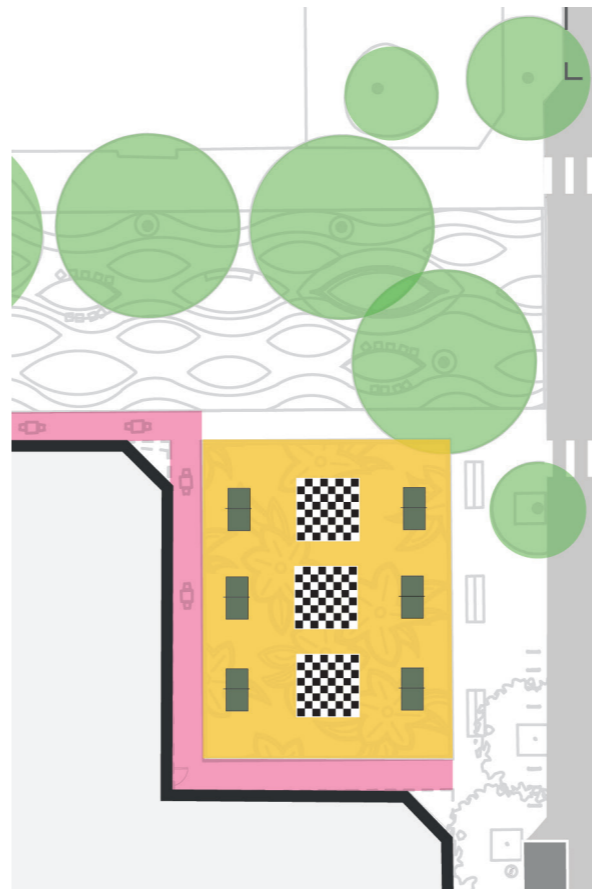
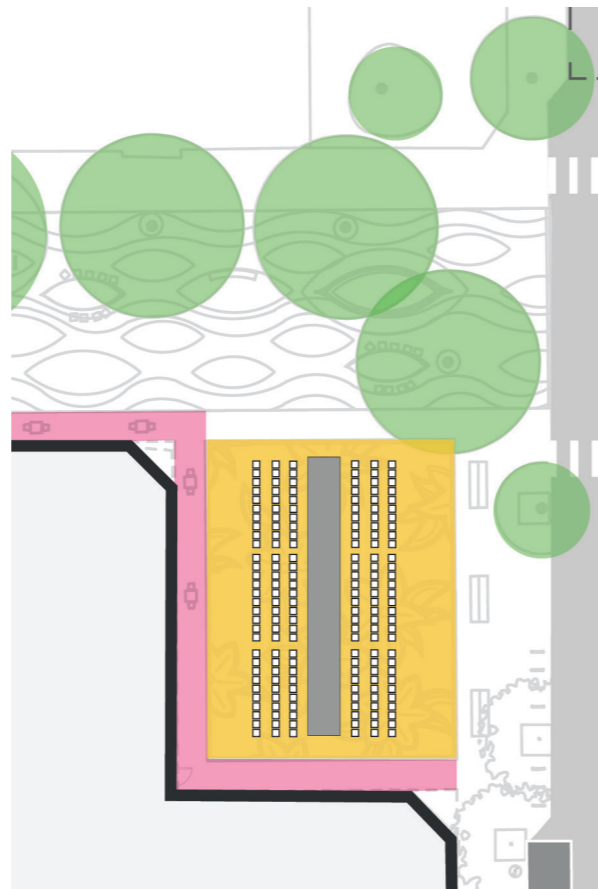
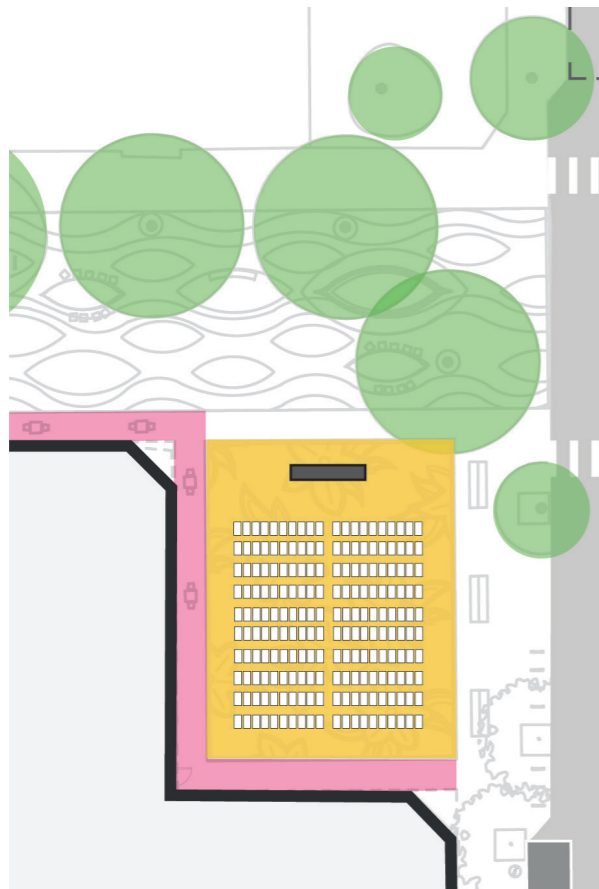
**Games Day**

3 large chess boards and 6 table tennis tables



**Market Day**

18 market stalls (3x3m)





# Town Square

## Proposals for Town Square

The multifunctional space in the angle of the Plot F building would be the neighbourhood square. It is proposed that this would be constructed from smooth in-situ concrete supplied from the most local East London source on the Thames using the most commonly used East London aggregate. A kantha pattern of flowers, drawing inspiration from the meanwhile intervention, would be etched into the surface. In this way we would bring together something with the robustness of East London, referencing its industrial past, whilst also capturing the spirit of the existing community.

The concrete would be framed by the general paving of Aberfeldy Street, Perfecta flags, to be used for the principal pedestrian route north-south and east-west, as well as the spill out zone around the edge of Building F.

The space would be defined and activated by seating along the southern edge adjacent to Dee Street. Some additional new trees would enclose the south-western corner.

Power and water supplies would be integrated into the ground to support events.

The social/ play hub is located on the previous route of Aberfeldy Street, framed by existing mature trees, the church and Building F. The layout is inspired by a curving kantha pattern. This would be created using three different colours of granite sett with a sawn surface so that they are comfortable to walk upon. Granite is also a commonly used material in the public realm of east London particularly for kerbs and the granite paving is very much a part of this London material typology. The paving is framed by the Perfecta flags which also identify the main pedestrian route connecting the northern and southern parts of Aberfeldy Street.

The furniture in the space creates smaller scale, more intimate, spaces in contrast to the open square. The form of the tables with seats, raised planters and play structure are derived from the kantha pattern and would be bespoke to the space. Timber bench style seating is integrated into some of the raised planting beds. Bright colour would be used to express the components and enliven the space.

Planting would also exploit this relatively sunny location with more colourful flowering shrubs, perennials, and bulbs.

The space allows permanent pedestrian and cycle access to connect north-south along Aberfeldy Street. It also allows access for emergency vehicles and cycle parking.

The footway along Ettrick Street to the north of Building F provides a pedestrian connection from Town Square to the principal entrance of that building. There will also be a footway along the western side of building F connecting to Dee Street which will become part of Culloden Green in future phases.

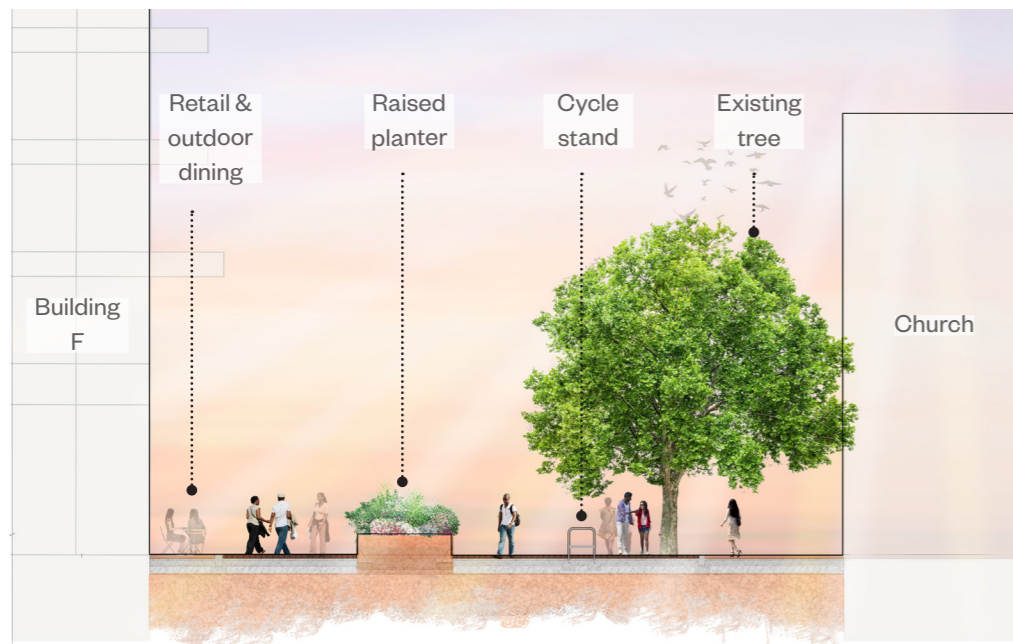
Accessible parking spaces are located on Dee Street with two resident permit spaces located on Ettrick Street.



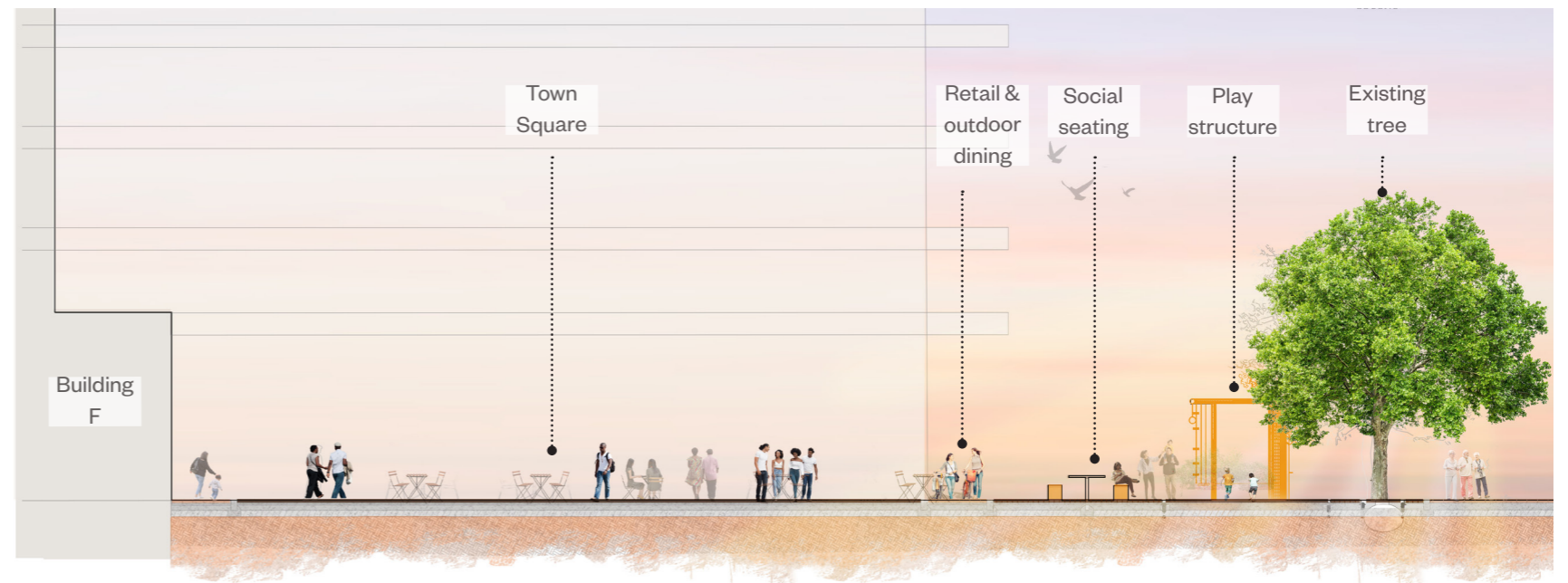
Illustrative Plan



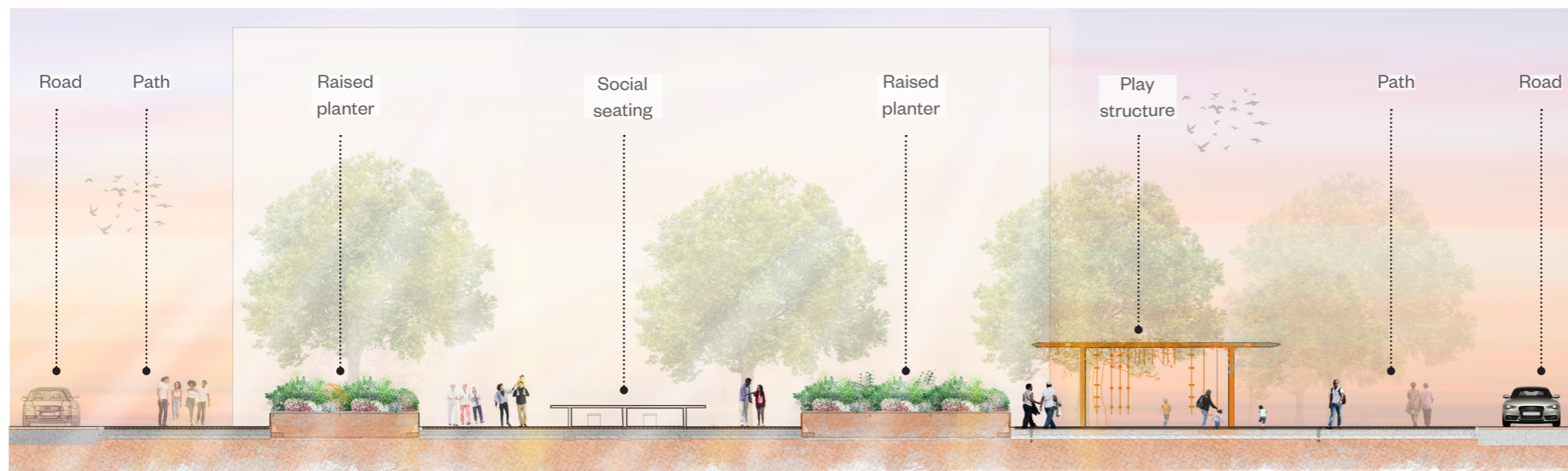
# Town Square



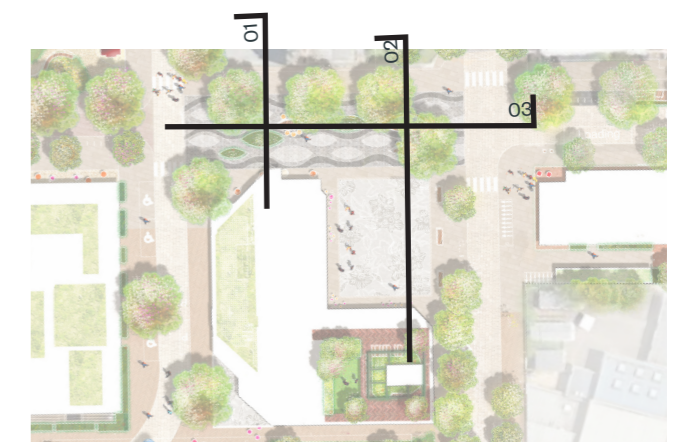
Illustrative Cross Section 01



Illustrative Cross Section 02



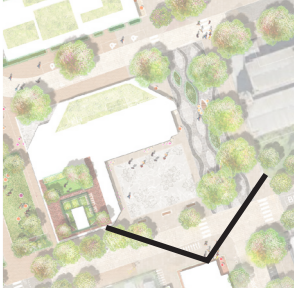
Illustrative Cross Section 03



Location Plan



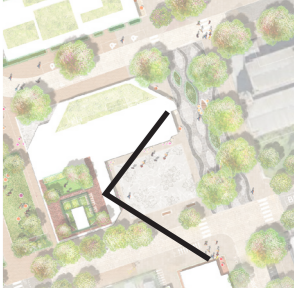
# Town Square



3D Visualisation



# Town Square



3D Visualisation