

FLOOR	ROOM	ROOM USE	AVERAGE DAYLIGHT FACTOR			
			CONSENTED	MAX PARAMETER	LOSS	%
LEVEL 3	148	L/K/D	1.6	1.5	0.1	6.3
	149	BEDROOM	1.3	1.3	0.0	0.0
	150	BEDROOM	1.6	1.5	0.1	6.3
	151	BEDROOM	1.4	1.4	0.0	0.0

FLOOR	ROOM	ROOM USE	ANNUAL PROBABLE SUNLIGHT HOURS (ROOM)					
			ROOM CONSENTED		ROOM MAX PARAMETER		TOTAL % LOSS	WINTER % LOSS
			TOTAL	WINTER	TOTAL	WINTER		
LEVEL 3	148	L/K/D	6	0	6	0	0.0	0.0
	149	BEDROOM	3	0	3	0	0.0	0.0
	150	BEDROOM	3	0	3	0	0.0	0.0
	151	BEDROOM	3	0	3	0	0.0	0.0



Fig. 16: Floor Plan

Table 16: Assessment Data

FLOOR	ROOM	ROOM USE	AVERAGE DAYLIGHT FACTOR			
			CONSENTED	MAX PARAMETER	LOSS	%
LEVEL 4	152	L/K/D	1.6	1.6	0.0	0.0
	153	BEDROOM	1.4	1.3	0.1	7.1
	154	BEDROOM	1.7	1.6	0.1	5.9
	155	BEDROOM	1.5	1.4	0.1	6.7

FLOOR	ROOM	ROOM USE	ANNUAL PROBABLE SUNLIGHT HOURS (ROOM)					
			ROOM CONSENTED		ROOM MAX PARAMETER		TOTAL % LOSS	WINTER % LOSS
			TOTAL	WINTER	TOTAL	WINTER		
LEVEL 4	152	L/K/D	6	0	6	0	0.0	0.0
	153	BEDROOM	3	0	3	0	0.0	0.0
	154	BEDROOM	3	0	3	0	0.0	0.0
	155	BEDROOM	3	0	3	0	0.0	0.0



Fig. 17: Floor Plan

Table 17: Assessment Data

FLOOR	ROOM	ROOM USE	AVERAGE DAYLIGHT FACTOR			
			CONSENTED	MAX PARAMETER	LOSS	%
LEVEL 5	156	L/K/D	1.7	1.6	0.1	5.9
	157	BEDROOM	1.5	1.4	0.1	6.7
	158	BEDROOM	1.8	1.7	0.1	5.6
	159	BEDROOM	1.5	1.5	0.0	0.0

FLOOR	ROOM	ROOM USE	ANNUAL PROBABLE SUNLIGHT HOURS (ROOM)					
			ROOM CONSENTED		ROOM MAX PARAMETER		TOTAL % LOSS	WINTER % LOSS
			TOTAL	WINTER	TOTAL	WINTER		
LEVEL 5	156	L/K/D	6	0	6	0	0.0	0.0
	157	BEDROOM	3	0	3	0	0.0	0.0
	158	BEDROOM	3	0	3	0	0.0	0.0
	159	BEDROOM	3	0	3	0	0.0	0.0



Fig. 18: Floor Plan

Table 18: Assessment Data

FLOOR	ROOM	ROOM USE	AVERAGE DAYLIGHT FACTOR			
			CONSENTED	MAX PARAMETER	LOSS	%
LEVEL 6	160	L/K/D	1.7	1.7	0.0	0.0
	161	BEDROOM	1.5	1.5	0.0	0.0
	162	BEDROOM	1.9	1.8	0.1	5.3
	163	BEDROOM	1.6	1.5	0.1	6.3

FLOOR	ROOM	ROOM USE	ANNUAL PROBABLE SUNLIGHT HOURS (ROOM)					
			ROOM CONSENTED		ROOM MAX PARAMETER		TOTAL % LOSS	WINTER % LOSS
			TOTAL	WINTER	TOTAL	WINTER		
LEVEL 6	160	L/K/D	6	0	6	0	0.0	0.0
	161	BEDROOM	3	0	3	0	0.0	0.0
	162	BEDROOM	3	0	3	0	0.0	0.0
	163	BEDROOM	3	0	3	0	0.0	0.0

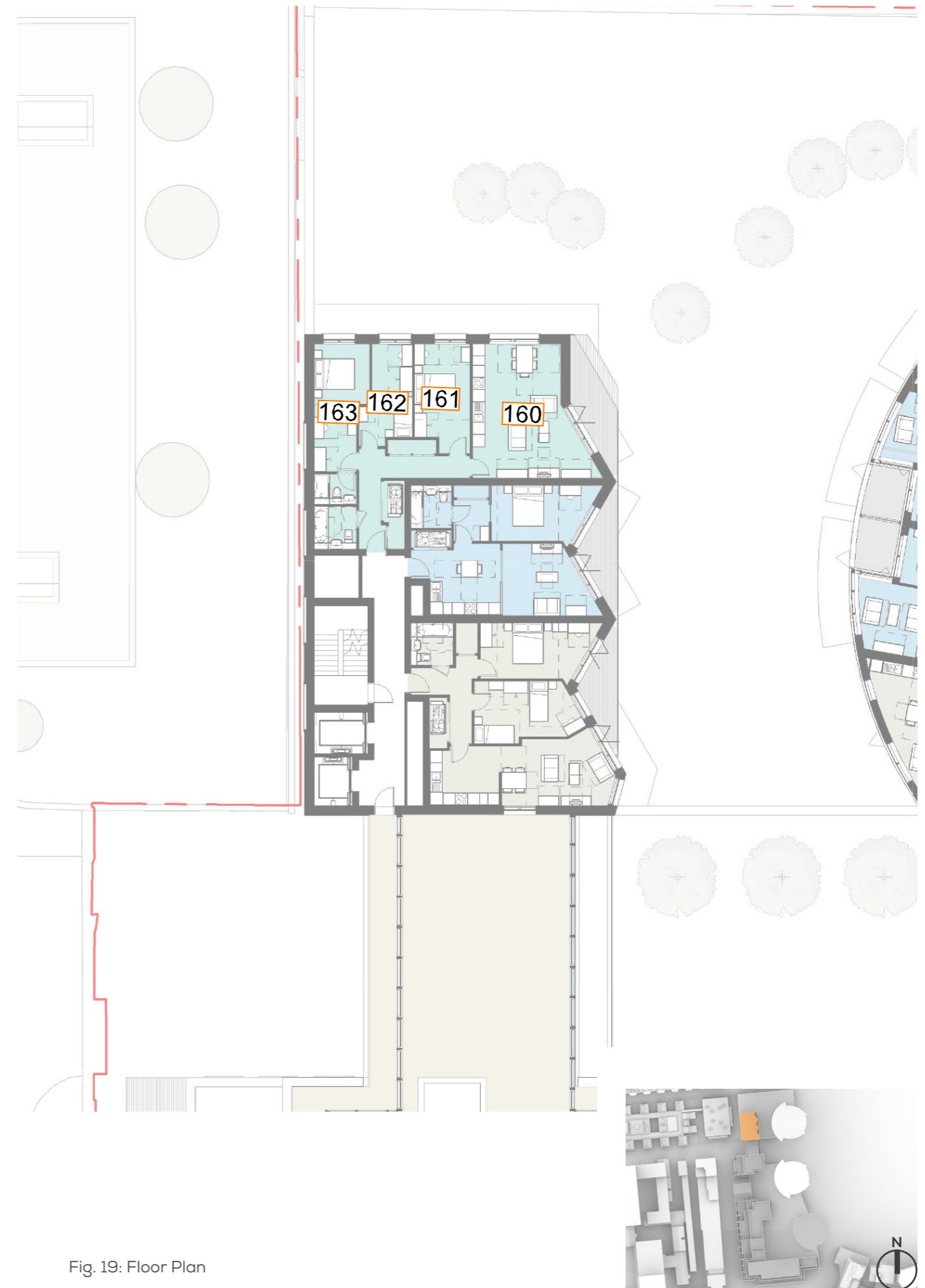


Fig. 19: Floor Plan

Table 19: Assessment Data

FLOOR	ROOM	ROOM USE	AVERAGE DAYLIGHT FACTOR			
			CONSENTED	MAX PARAMETER	LOSS	%
LEVEL 7	164	L/K/D	1.8	1.8	0.0	0.0
	165	BEDROOM	1.6	1.6	0.0	0.0
	166	BEDROOM	1.9	1.9	0.0	0.0
	167	BEDROOM	1.7	1.6	0.1	5.9

FLOOR	ROOM	ROOM USE	ANNUAL PROBABLE SUNLIGHT HOURS (ROOM)					
			ROOM CONSENTED		ROOM MAX PARAMETER		TOTAL % LOSS	WINTER % LOSS
			TOTAL	WINTER	TOTAL	WINTER		
LEVEL 7	164	L/K/D	6	0	6	0	0.0	0.0
	165	BEDROOM	3	0	3	0	0.0	0.0
	166	BEDROOM	3	0	3	0	0.0	0.0
	167	BEDROOM	3	0	3	0	0.0	0.0

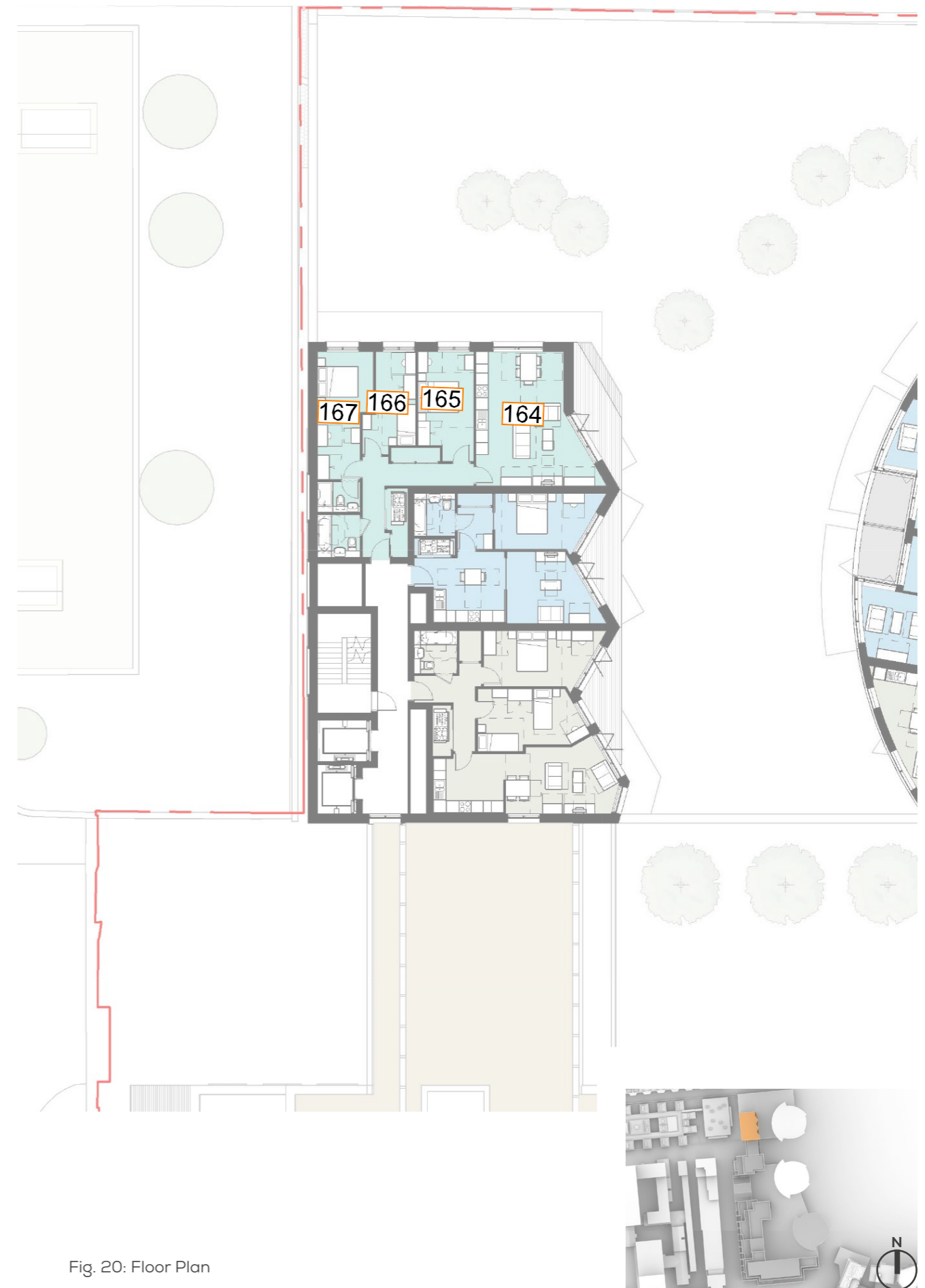


Fig. 20: Floor Plan

Table 20: Assessment Data

FLOOR	ROOM	ROOM USE	AVERAGE DAYLIGHT FACTOR			
			CONSENTED	MAX PARAMETER	LOSS	%
LEVEL 8	168	L/K/D	2.3	2.3	0.0	0.0
	169	BEDROOM	1.7	1.6	0.1	5.9
	170	BEDROOM	2.0	2.0	0.0	0.0
	171	BEDROOM	1.7	1.7	0.0	0.0

FLOOR	ROOM	ROOM USE	ANNUAL PROBABLE SUNLIGHT HOURS (ROOM)					
			ROOM CONSENTED		ROOM MAX PARAMETER		TOTAL % LOSS	WINTER % LOSS
			TOTAL	WINTER	TOTAL	WINTER		
LEVEL 8	168	L/K/D	6	0	6	0	0.0	0.0
	169	BEDROOM	3	0	3	0	0.0	0.0
	170	BEDROOM	3	0	3	0	0.0	0.0
	171	BEDROOM	3	0	3	0	0.0	0.0

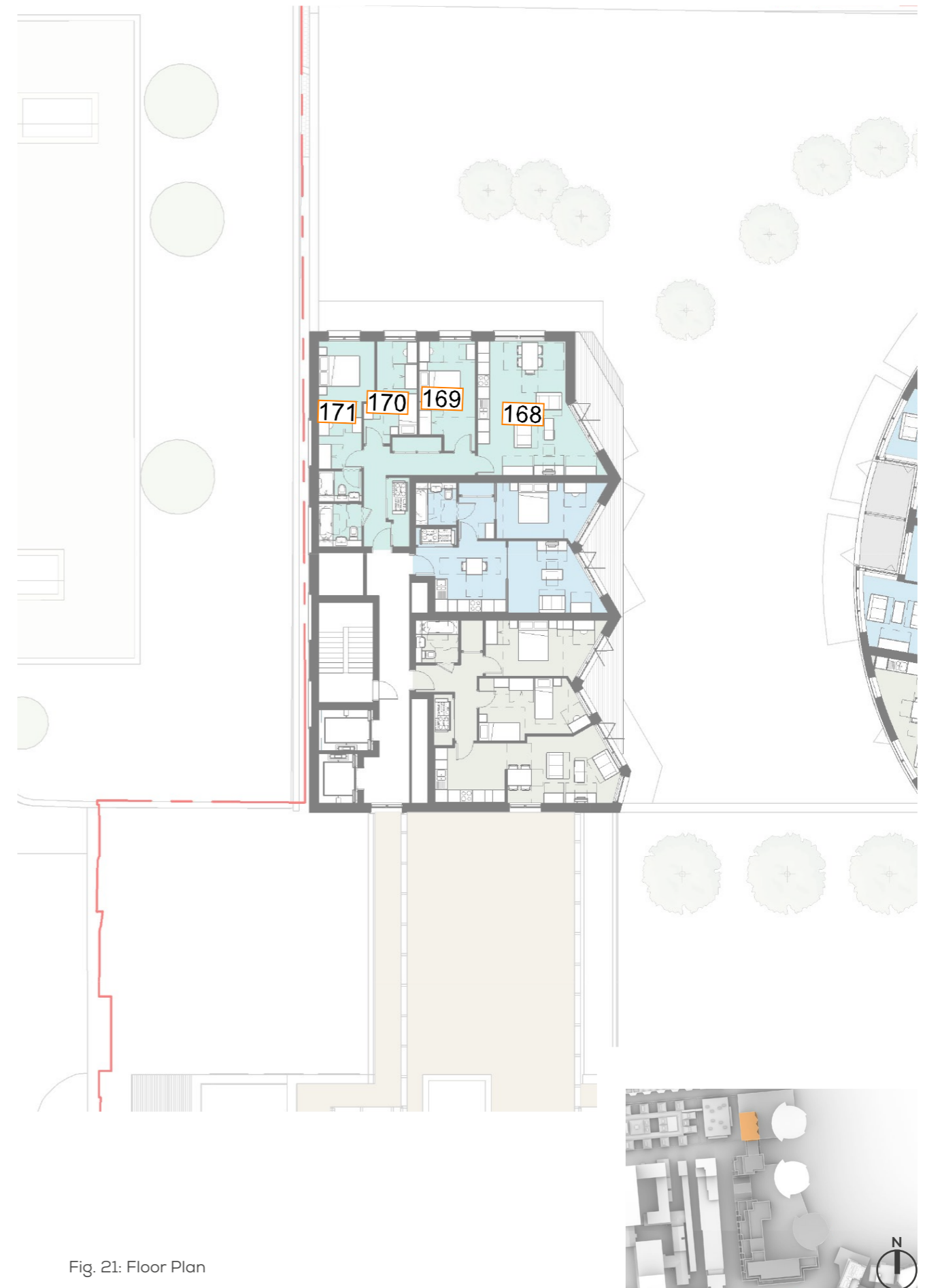


Fig. 21: Floor Plan

Table 21: Assessment Data

DAYLIGHT/SUNLIGHT IMPACTS ON FORMER POPLAR BUS DEPOT - EXISTING V PROPOSED

Average Daylight Factor (ADF) - Annual Probable Sunlight Hours (APSH)

Southern Tower

FLOOR	ROOM	ROOM USE	AVERAGE DAYLIGHT FACTOR			
			CONSENTED	MAX PARAMETER	LOSS	%
FORMER BUS DEPOT - SOUTHERN TOWER						
LEVEL 1	172	BEDROOM	0.5	0.5	0.0	0.0
	173	L/K/D	3.4	3.4	0.0	0.0
	174	BEDROOM	4.0	3.8	0.2	5.0
	175	BEDROOM	3.0	3.0	0.0	0.0
	176	L/K/D	1.6	1.6	0.0	0.0
	177	L/K/D	1.5	1.5	0.0	0.0
	178	BEDROOM	2.2	2.2	0.0	0.0
	179	L/K/D	1.7	1.7	0.0	0.0
	180	BEDROOM	0.8	0.8	0.0	0.0
	181	BEDROOM	1.4	1.4	0.0	0.0

FLOOR	ROOM	ROOM USE	ANNUAL PROBABLE SUNLIGHT HOURS (ROOM)					
			ROOM CONSENTED		ROOM MAX PARAMETER		TOTAL % LOSS	WINTER % LOSS
			TOTAL	WINTER	TOTAL	WINTER		
FORMER BUS DEPOT - SOUTHERN TOWER								
LEVEL 1	172	BEDROOM	N/A	N/A	N/A	N/A	N/A	N/A
	173	L/K/D	N/A	N/A	N/A	N/A	N/A	N/A
	174	BEDROOM	21	0	21	0	0.0	0.0
	175	BEDROOM	21	0	21	0	0.0	0.0
	176	L/K/D	21	0	21	0	0.0	0.0
	177	L/K/D	17	0	17	0	0.0	0.0
	178	BEDROOM	13	0	13	0	0.0	0.0
	179	L/K/D	21	2	20	2	4.8	0.0
	180	BEDROOM	8	2	8	2	0.0	0.0
	181	BEDROOM	35	9	35	9	0.0	0.0



Fig. 22: Floor Plan

Table 22: Assessment Data

FLOOR	ROOM	ROOM USE	AVERAGE DAYLIGHT FACTOR			
			CONSENTED	MAX PARAMETER	LOSS	%
LEVEL 2	182	BEDROOM	1.2	1.2	0.0	0.0
	183	BEDROOM	0.7	0.7	0.0	0.0
	184	L/K/D	3.2	3.1	0.1	3.1
	185	BEDROOM	3.4	3.3	0.1	2.9
	186	L/K/D	1.7	1.6	0.1	5.9
	187	L/K/D	1.6	1.5	0.1	6.3
	188	BEDROOM	2.6	2.5	0.1	3.8
	189	L/K/D	1.9	1.9	0.0	0.0
	190	BEDROOM	0.8	0.8	0.0	0.0
	191	BEDROOM	1.5	1.5	0.0	0.0

FLOOR	ROOM	ROOM USE	ANNUAL PROBABLE SUNLIGHT HOURS (ROOM)					
			ROOM CONSENTED		ROOM MAX PARAMETER		TOTAL % LOSS	WINTER % LOSS
			TOTAL	WINTER	TOTAL	WINTER		
LEVEL 2	182	BEDROOM	N/A	N/A	N/A	N/A	N/A	N/A
	183	BEDROOM	N/A	N/A	N/A	N/A	N/A	N/A
	184	L/K/D	27	2	25	2	7.4	0.0
	185	BEDROOM	30	0	29	0	3.3	0.0
	186	L/K/D	26	0	26	0	0.0	0.0
	187	L/K/D	25	0	24	0	4.0	0.0
	188	BEDROOM	23	0	21	0	8.7	0.0
	189	L/K/D	29	2	28	2	3.4	0.0
	190	BEDROOM	7	2	7	2	0.0	0.0
	191	BEDROOM	38	9	38	9	0.0	0.0

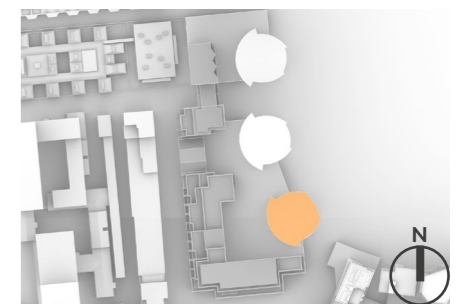


Fig. 23: Floor Plan

Table 23: Assessment Data

FLOOR	ROOM	ROOM USE	AVERAGE DAYLIGHT FACTOR			
			CONSENTED	MAX PARAMETER	LOSS	%
LEVEL 3	192	BEDROOM	1.3	1.3	0.0	0.0
	193	BEDROOM	0.5	0.5	0.0	0.0
	194	L/K/D	2.8	2.7	0.1	3.6
	195	BEDROOM	3.6	3.3	0.3	8.3
	196	L/K/D	1.8	1.7	0.1	5.6
	197	L/K/D	1.7	1.6	0.1	5.9
	198	BEDROOM	2.9	2.8	0.1	3.4
	199	L/K/D	1.9	1.9	0.0	0.0
	200	BEDROOM	0.5	0.5	0.0	0.0
	201	BEDROOM	2.0	2.0	0.0	0.0

FLOOR	ROOM	ROOM USE	ANNUAL PROBABLE SUNLIGHT HOURS (ROOM)					
			ROOM CONSENTED		ROOM MAX PARAMETER		TOTAL % LOSS	WINTER % LOSS
			TOTAL	WINTER	TOTAL	WINTER		
LEVEL 3	192	BEDROOM	N/A	N/A	N/A	N/A	N/A	N/A
	193	BEDROOM	N/A	N/A	N/A	N/A	N/A	N/A
	194	L/K/D	32	5	28	3	12.5	40.0
	195	BEDROOM	36	3	33	2	8.3	33.3
	196	L/K/D	36	1	34	1	5.6	0.0
	197	L/K/D	34	0	33	0	2.9	0.0
	198	BEDROOM	31	0	29	0	6.5	0.0
	199	L/K/D	52	3	50	3	3.8	0.0
	200	BEDROOM	6	2	6	2	0.0	0.0
	201	BEDROOM	42	9	42	9	0.0	0.0

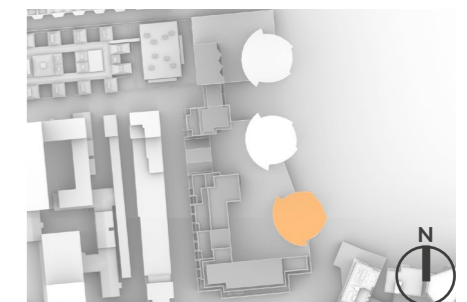


Fig. 24: Floor Plan

Table 24: Assessment Data

FLOOR	ROOM	ROOM USE	AVERAGE DAYLIGHT FACTOR			
			CONSENTED	MAX PARAMETER	LOSS	%
LEVEL 4	202	BEDROOM	1.4	1.4	0.0	0.0
	203	BEDROOM	0.6	0.6	0.0	0.0
	204	L/K/D	2.9	2.8	0.1	3.4
	205	BEDROOM	3.9	3.5	0.4	10.3
	206	L/K/D	2.0	1.8	0.2	10.0
	207	L/K/D	1.9	1.7	0.2	10.5
	208	BEDROOM	3.4	3.1	0.3	8.8
	209	L/K/D	2.3	2.2	0.1	4.3
	210	BEDROOM	0.6	0.6	0.0	0.0
	211	BEDROOM	2.2	2.2	0.0	0.0

FLOOR	ROOM	ROOM USE	ANNUAL PROBABLE SUNLIGHT HOURS (ROOM)					
			ROOM CONSENTED		ROOM MAX PARAMETER		TOTAL % LOSS	WINTER % LOSS
			TOTAL	WINTER	TOTAL	WINTER		
LEVEL 4	202	BEDROOM	N/A	N/A	N/A	N/A	N/A	N/A
	203	BEDROOM	N/A	N/A	N/A	N/A	N/A	N/A
	204	L/K/D	36	7	29	3	19.4	57.1
	205	BEDROOM	42	7	36	4	14.3	42.9
	206	L/K/D	42	6	39	5	7.1	16.7
	207	L/K/D	40	3	37	2	7.5	33.3
	208	BEDROOM	43	2	40	2	7.0	0.0
	209	L/K/D	63	3	61	3	3.2	0.0
	210	BEDROOM	6	2	6	2	0.0	0.0
	211	BEDROOM	47	9	47	9	0.0	0.0

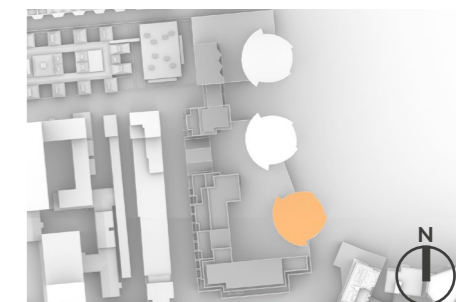
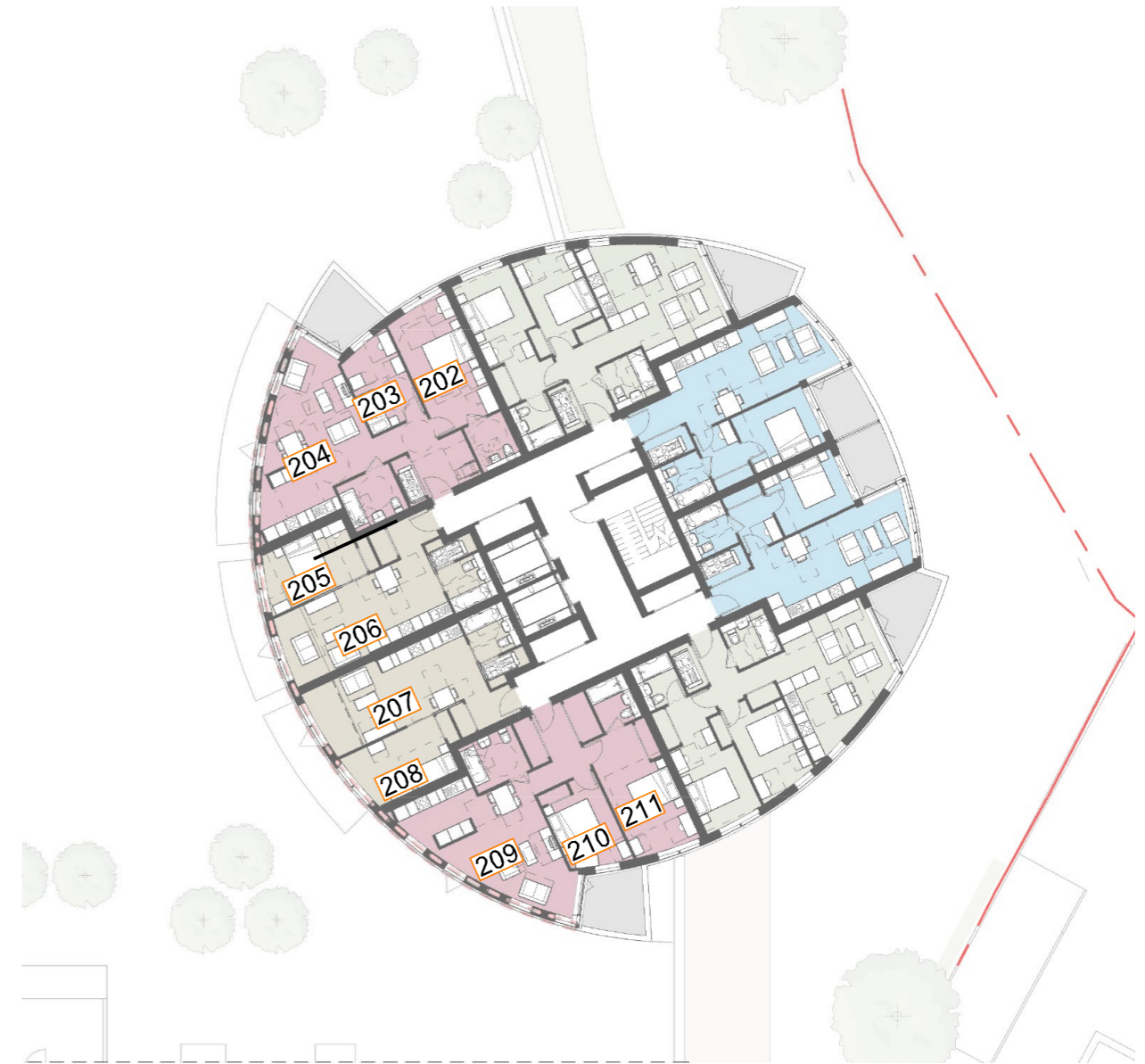


Fig. 25: Floor Plan

Table 25: Assessment Data

FLOOR	ROOM	ROOM USE	AVERAGE DAYLIGHT FACTOR			
			CONSENTED	MAX PARAMETER	LOSS	%
LEVEL 5	212	BEDROOM	1.3	1.3	0.0	0.0
	213	BEDROOM	0.6	0.6	0.0	0.0
	214	L/K/D	3.0	2.8	0.2	6.7
	215	BEDROOM	4.1	3.7	0.4	9.8
	216	L/K/D	2.2	1.9	0.3	13.6
	217	L/K/D	2.0	1.9	0.1	5.0
	218	BEDROOM	3.8	3.5	0.3	7.9
	219	L/K/D	2.8	2.7	0.1	3.6
	220	BEDROOM	0.6	0.6	0.0	0.0
	221	BEDROOM	2.4	2.4	0.0	0.0

FLOOR	ROOM	ROOM USE	ANNUAL PROBABLE SUNLIGHT HOURS (ROOM)					
			ROOM CONSENTED		ROOM MAX PARAMETER		TOTAL % LOSS	WINTER % LOSS
			TOTAL	WINTER	TOTAL	WINTER		
LEVEL 5	212	BEDROOM	N/A	N/A	N/A	N/A	N/A	N/A
	213	BEDROOM	N/A	N/A	N/A	N/A	N/A	N/A
	214	L/K/D	37	8	31	5	16.2	37.5
	215	BEDROOM	44	11	36	6	18.2	45.5
	216	L/K/D	47	11	42	8	10.6	27.3
	217	L/K/D	46	10	41	7	10.9	30.0
	218	BEDROOM	51	9	48	7	5.9	22.2
	219	L/K/D	73	10	72	10	1.4	0.0
	220	BEDROOM	6	2	6	2	0.0	0.0
	221	BEDROOM	51	13	51	13	0.0	0.0



Fig. 26: Floor Plan

Table 26: Assessment Data

FLOOR	ROOM	ROOM USE	AVERAGE DAYLIGHT FACTOR			
			CONSENTED	MAX PARAMETER	LOSS	%
LEVEL 6	222	BEDROOM	2.2	2.1	0.1	4.5
	223	BEDROOM	0.6	0.5	0.1	16.7
	224	L/K/D	3.7	3.4	0.3	8.1
	225	L/K/D	3.4	2.9	0.5	14.7
	226	BEDROOM	2.0	1.6	0.4	20.0
	227	BEDROOM	2.0	1.6	0.4	20.0
	228	L/K/D	3.5	3.1	0.4	11.4
	229	L/K/D	4.1	3.9	0.2	4.9
	230	BEDROOM	0.8	0.8	0.0	0.0
	231	BEDROOM	3.6	3.5	0.1	2.8

FLOOR	ROOM	ROOM USE	ANNUAL PROBABLE SUNLIGHT HOURS (ROOM)					
			ROOM CONSENTED		ROOM MAX PARAMETER		TOTAL % LOSS	WINTER % LOSS
			TOTAL	WINTER	TOTAL	WINTER		
LEVEL 6	222	BEDROOM	N/A	N/A	N/A	N/A	N/A	N/A
	223	BEDROOM	N/A	N/A	N/A	N/A	N/A	N/A
	224	L/K/D	39	10	33	6	15.4	40.0
	225	L/K/D	55	20	47	14	14.5	30.0
	226	BEDROOM	10	5	4	0	60.0	100.0
	227	BEDROOM	10	5	4	0	60.0	100.0
	228	L/K/D	63	21	57	16	9.5	23.8
	229	L/K/D	87	23	83	20	4.6	13.0
	230	BEDROOM	8	5	8	5	0.0	0.0
	231	BEDROOM	54	16	54	16	0.0	0.0

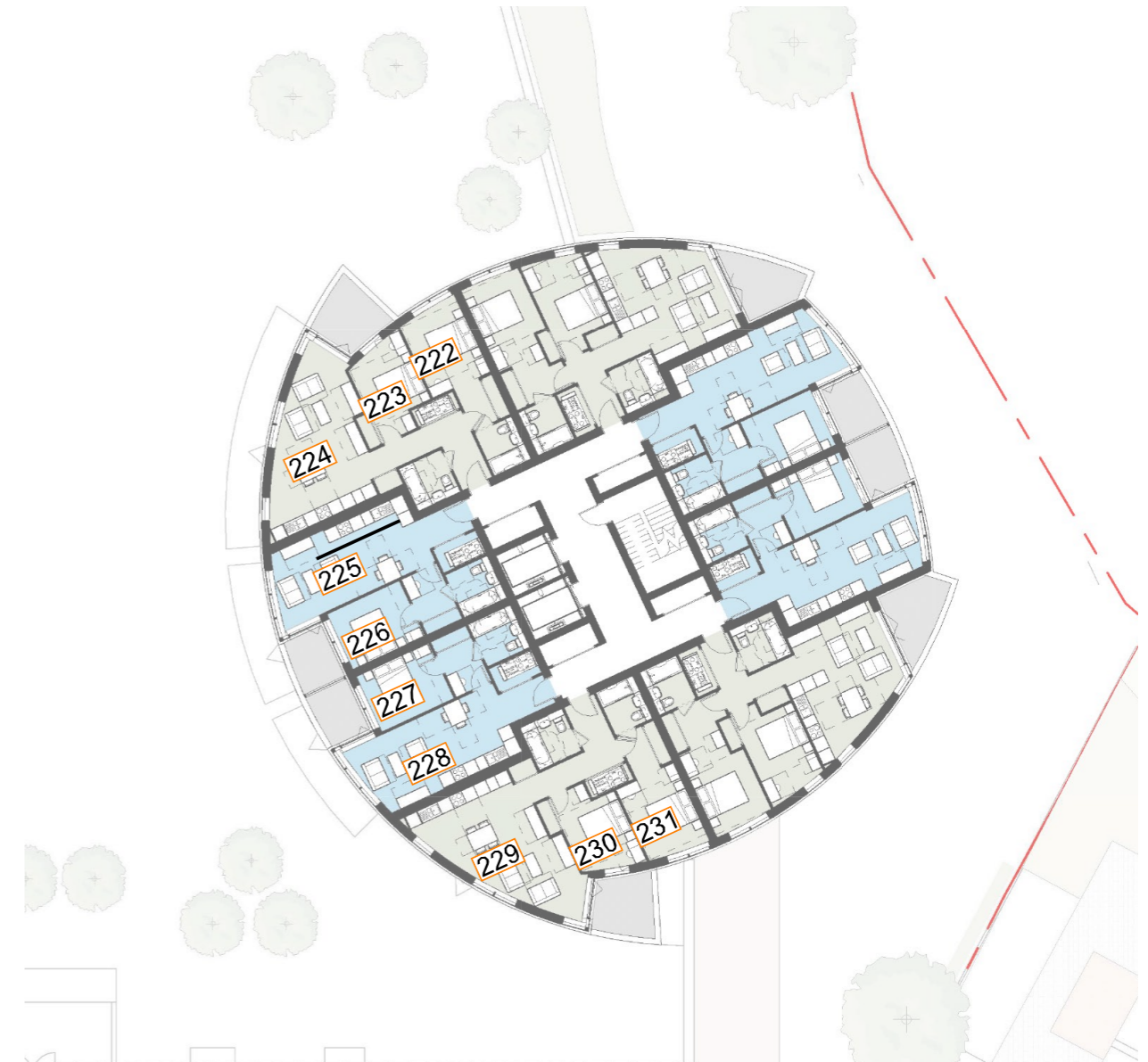


Fig. 27: Floor Plan

Table 27: Assessment Data

FLOOR	ROOM	ROOM USE	AVERAGE DAYLIGHT FACTOR			
			CONSENTED	MAX PARAMETER	LOSS	%
LEVEL 7	232	BEDROOM	2.2	2.1	0.1	4.5
	233	BEDROOM	0.6	0.6	0.0	0.0
	234	L/K/D	3.8	3.4	0.4	10.5
	235	L/K/D	3.5	3.0	0.5	14.3
	236	BEDROOM	2.1	1.7	0.4	19.0
	237	BEDROOM	2.1	1.6	0.5	23.8
	238	L/K/D	3.6	3.2	0.4	11.1
	239	L/K/D	4.5	4.2	0.3	6.7
	240	BEDROOM	1.0	0.9	0.1	10.0
	241	BEDROOM	3.8	3.7	0.1	2.6

FLOOR	ROOM	ROOM USE	ANNUAL PROBABLE SUNLIGHT HOURS (ROOM)					
			ROOM CONSENTED		ROOM MAX PARAMETER		TOTAL % LOSS	WINTER % LOSS
			TOTAL	WINTER	TOTAL	WINTER		
LEVEL 7	232	BEDROOM	N/A	N/A	N/A	N/A	N/A	N/A
	233	BEDROOM	N/A	N/A	N/A	N/A	N/A	N/A
	234	L/K/D	39	10	34	6	12.8	40.0
	235	L/K/D	56	21	49	15	12.5	28.6
	236	BEDROOM	12	7	5	1	58.3	85.7
	237	BEDROOM	12	7	5	1	58.3	85.7
	238	L/K/D	67	25	60	19	10.4	24.0
	239	L/K/D	92	28	85	22	7.6	21.4
	240	BEDROOM	9	6	9	6	0.0	0.0
	241	BEDROOM	55	17	54	16	1.8	5.9

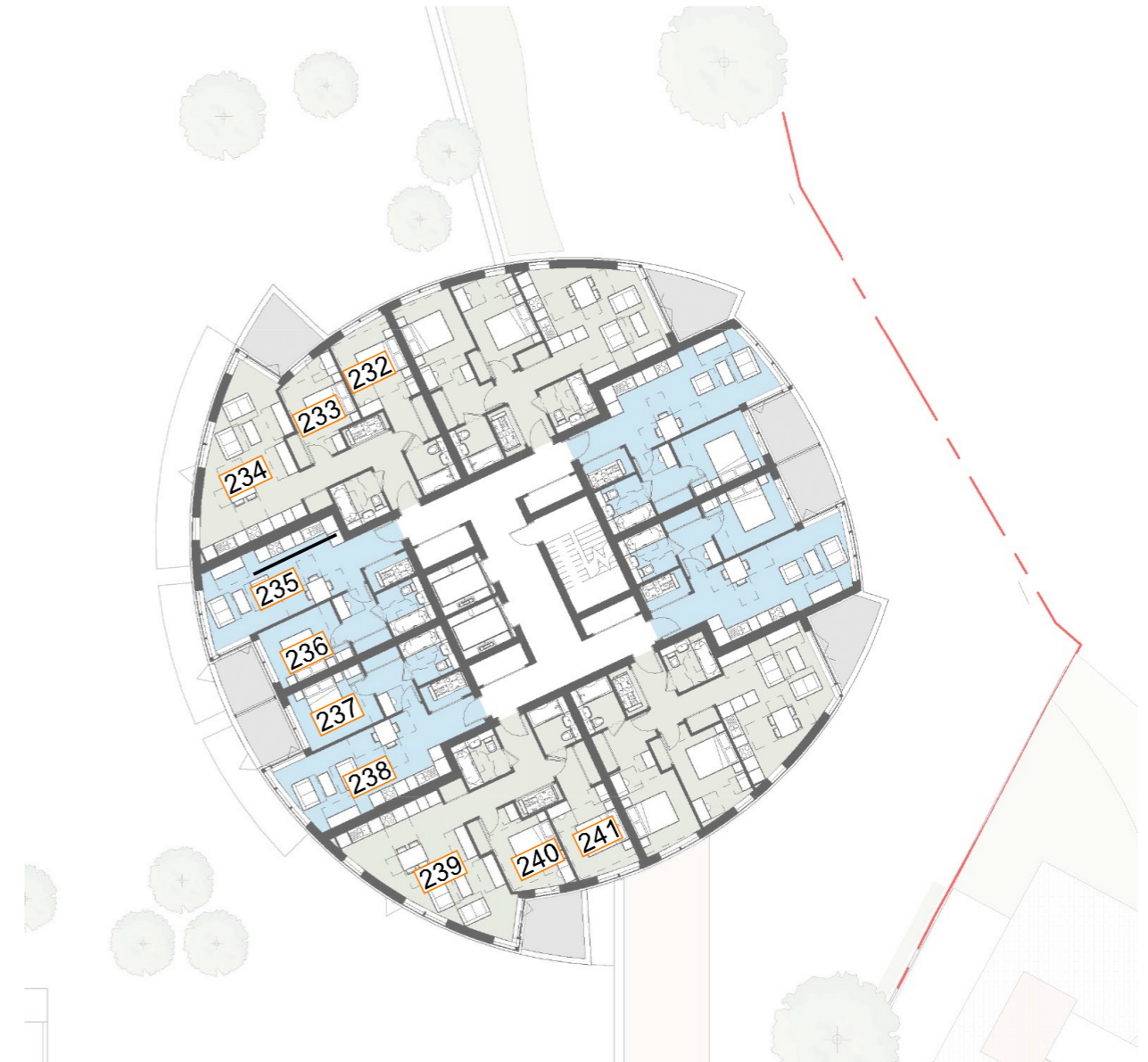


Fig. 28: Floor Plan

Table 28: Assessment Data

FLOOR	ROOM	ROOM USE	AVERAGE DAYLIGHT FACTOR			
			CONSENTED	MAX PARAMETER	LOSS	%
LEVEL 8	242	BEDROOM	2.2	2.1	0.1	4.5
	243	BEDROOM	0.6	0.6	0.0	0.0
	244	L/K/D	3.8	3.5	0.3	7.9
	245	L/K/D	3.6	3.1	0.5	13.9
	246	BEDROOM	2.2	1.7	0.5	22.7
	247	BEDROOM	2.2	1.7	0.5	22.7
	248	L/K/D	3.7	3.2	0.5	13.5
	249	L/K/D	4.6	4.3	0.3	6.5
	250	BEDROOM	1.0	0.9	0.1	10.0
	251	BEDROOM	3.9	3.8	0.1	2.6

FLOOR	ROOM	ROOM USE	ANNUAL PROBABLE SUNLIGHT HOURS (ROOM)					
			ROOM CONSENTED		ROOM MAX PARAMETER		TOTAL % LOSS	WINTER % LOSS
			TOTAL	WINTER	TOTAL	WINTER		
LEVEL 8	242	BEDROOM	N/A	N/A	N/A	N/A	N/A	N/A
	243	BEDROOM	N/A	N/A	N/A	N/A	N/A	N/A
	244	L/K/D	39	10	34	6	12.8	40.0
	245	L/K/D	56	21	50	16	10.7	23.8
	246	BEDROOM	12	7	5	1	58.3	85.7
	247	BEDROOM	12	7	5	1	58.3	85.7
	248	L/K/D	67	25	60	19	10.4	24.0
	249	L/K/D	94	30	87	24	7.4	20.0
	250	BEDROOM	11	8	11	8	0.0	0.0
	251	BEDROOM	57	19	56	18	1.8	5.3

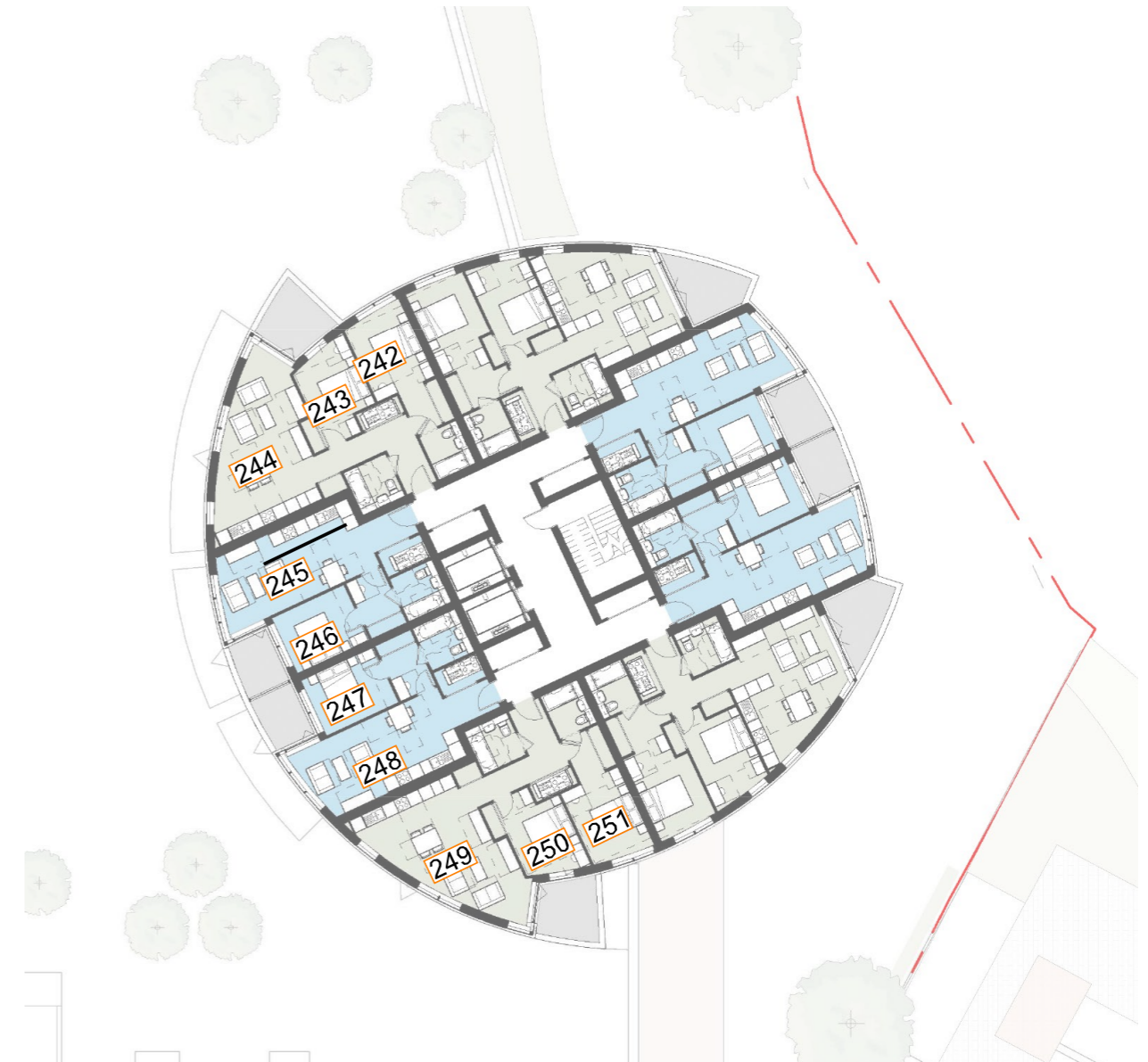


Fig. 29: Floor Plan

Table 29: Assessment Data

FLOOR	ROOM	ROOM USE	AVERAGE DAYLIGHT FACTOR			
			CONSENTED	MAX PARAMETER	LOSS	%
LEVEL 9	252	BEDROOM	2.2	2.2	0.0	0.0
	253	BEDROOM	0.6	0.6	0.0	0.0
	254	L/K/D	3.8	3.5	0.3	7.9
	255	L/K/D	3.7	3.2	0.5	13.5
	256	BEDROOM	2.2	1.8	0.4	18.2
	257	BEDROOM	2.3	1.7	0.6	26.1
	258	L/K/D	3.8	3.3	0.5	13.2
	259	L/K/D	4.8	4.4	0.4	8.3
	260	BEDROOM	1.0	1.0	0.0	0.0
	261	BEDROOM	3.9	3.8	0.1	2.6

FLOOR	ROOM	ROOM USE	ANNUAL PROBABLE SUNLIGHT HOURS (ROOM)					
			ROOM CONSENTED		ROOM MAX PARAMETER		TOTAL % LOSS	WINTER % LOSS
			TOTAL	WINTER	TOTAL	WINTER		
LEVEL 9	252	BEDROOM	N/A	N/A	N/A	N/A	N/A	N/A
	253	BEDROOM	N/A	N/A	N/A	N/A	N/A	N/A
	254	L/K/D	39	10	35	6	10.3	40.0
	255	L/K/D	56	21	50	16	10.7	23.8
	256	BEDROOM	12	7	6	2	50.0	71.4
	257	BEDROOM	12	7	5	1	58.3	85.7
	258	L/K/D	67	25	60	19	10.4	24.0
	259	L/K/D	94	30	87	24	7.4	20.0
	260	BEDROOM	11	8	11	8	0.0	0.0
	261	BEDROOM	57	19	56	18	1.8	5.3

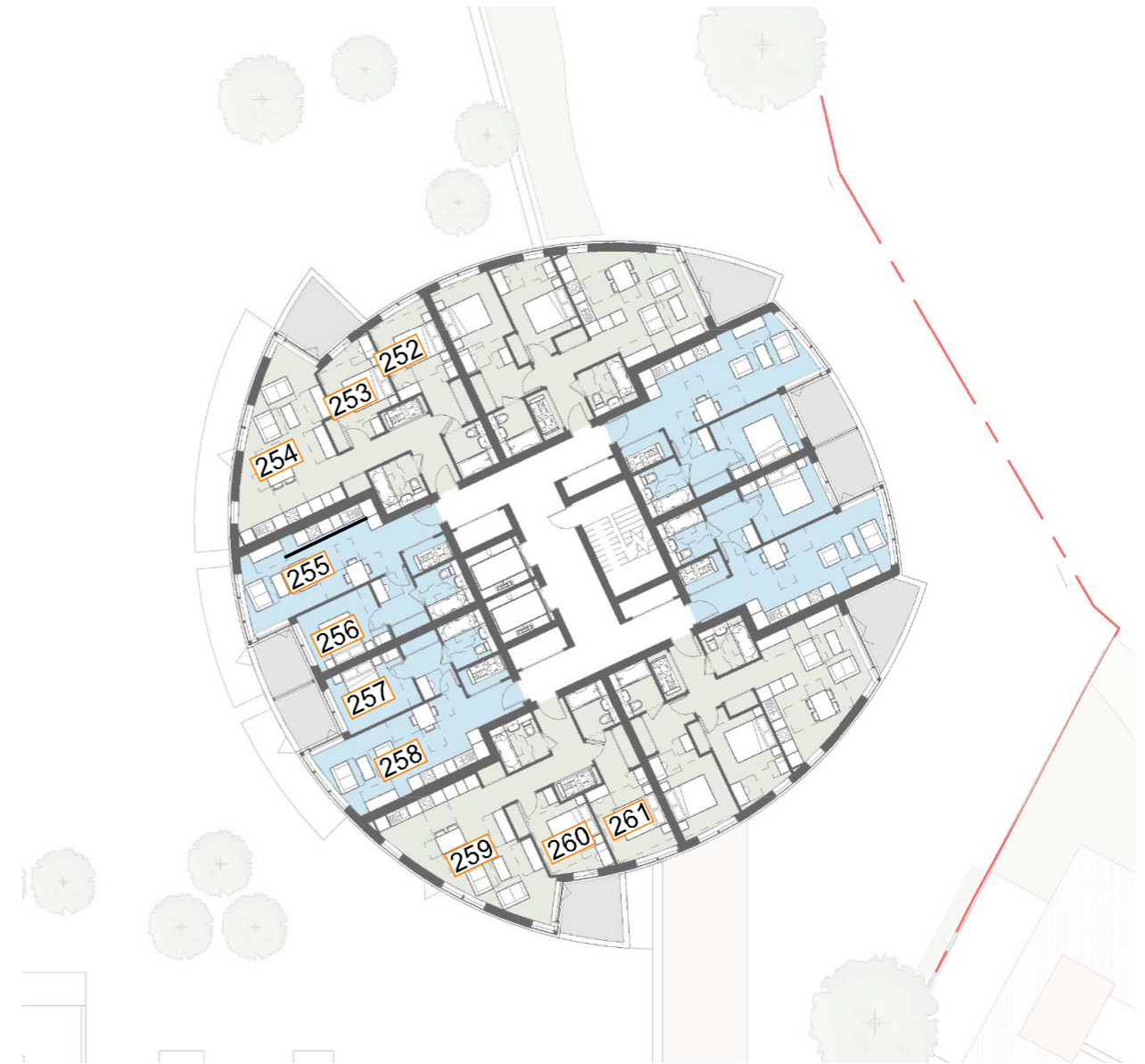


Fig. 30: Floor Plan

Table 30: Assessment Data

FLOOR	ROOM	ROOM USE	AVERAGE DAYLIGHT FACTOR			
			CONSENTED	MAX PARAMETER	LOSS	%
LEVEL 10	262	BEDROOM	2.2	2.1	0.1	4.5
	263	BEDROOM	0.5	0.5	0.0	0.0
	264	L/K/D	3.7	3.5	0.2	5.4
	265	L/K/D	3.7	3.2	0.5	13.5
	266	BEDROOM	2.3	1.9	0.4	17.4
	267	BEDROOM	2.3	1.9	0.4	17.4
	268	L/K/D	3.9	3.4	0.5	12.8
	269	L/K/D	4.8	4.5	0.3	6.3
	270	BEDROOM	1.0	1.0	0.0	0.0
	271	BEDROOM	3.8	3.7	0.1	2.6

FLOOR	ROOM	ROOM USE	ANNUAL PROBABLE SUNLIGHT HOURS (ROOM)					
			ROOM CONSENTED		ROOM MAX PARAMETER		TOTAL % LOSS	WINTER % LOSS
			TOTAL	WINTER	TOTAL	WINTER		
LEVEL 10	262	BEDROOM	N/A	N/A	N/A	N/A	N/A	N/A
	263	BEDROOM	N/A	N/A	N/A	N/A	N/A	N/A
	264	L/K/D	39	10	35	6	10.3	40.0
	265	L/K/D	56	21	50	16	10.7	23.8
	266	BEDROOM	12	7	6	2	50.0	71.4
	267	BEDROOM	12	7	6	2	50.0	71.4
	268	L/K/D	67	25	61	20	9.0	20.0
	269	L/K/D	94	30	89	25	5.3	16.7
	270	BEDROOM	11	8	11	8	0.0	0.0
	271	BEDROOM	57	19	56	18	1.8	5.3

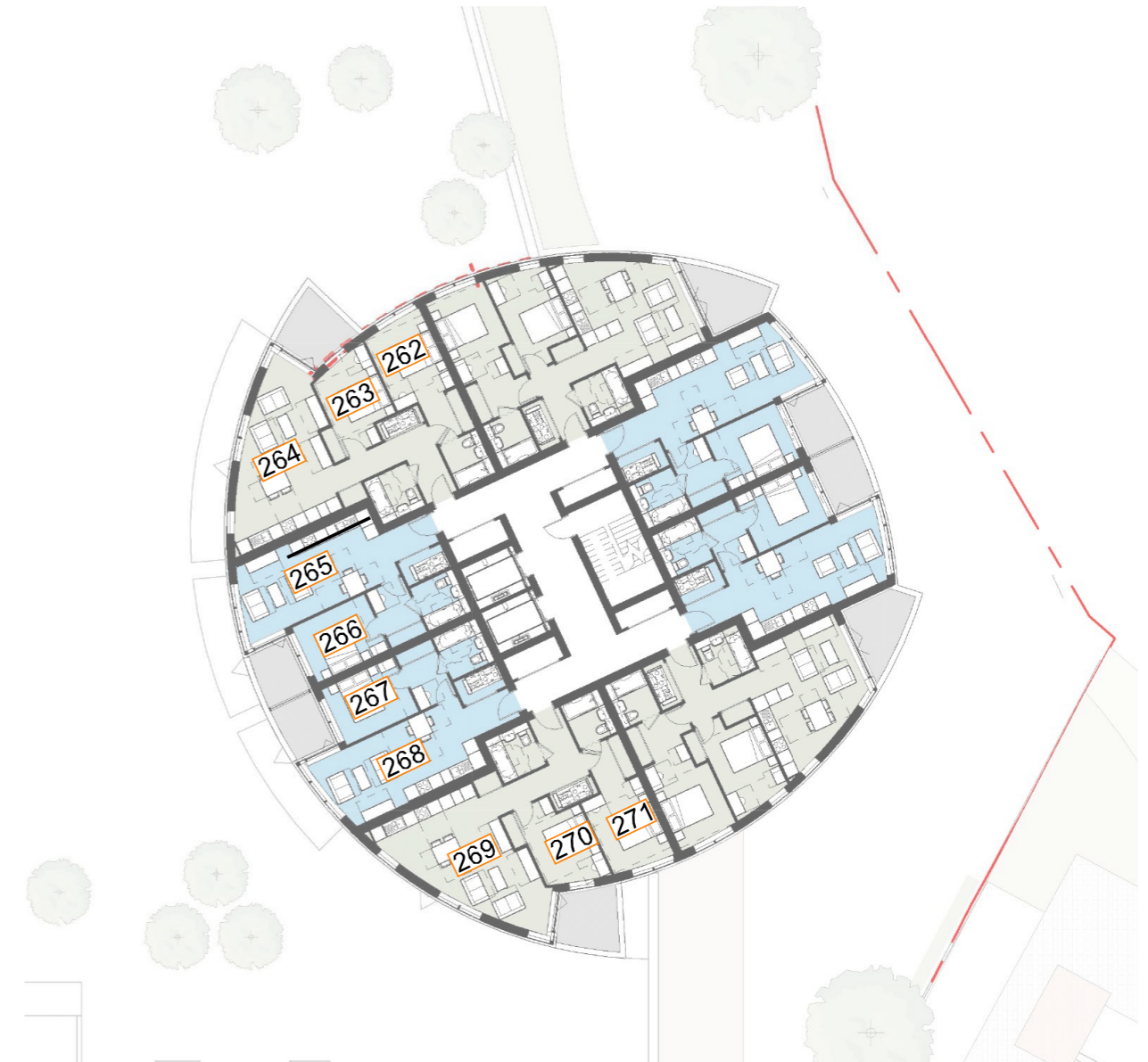


Fig. 31: Floor Plan

Table 31: Assessment Data

*Baseline v
Consented*

FLOOR	ROOM	ROOM USE	WINDOW	VERTICAL SKY COMPONENT				NO SKY LINE				ANNUAL PROBABLE SUNLIGHT HOURS							
				BASELINE	CONSENTED	LOSS	%	BASELINE	CONSENTED	LOSS	%	WINDOW BASELINE		WINDOW CONSENTED		TOTAL % LOSS	WINTER % LOSS		
				TOTAL	WINTER	TOTAL	WINTER												
ABERFELDY ESTATE PHASE THREE BLOCK G																			
F01	R1	L/K/D	W1	27.9	25.7	2.2	7.9	97.2	97.2	0.0	0.0	2	0	0	0	100.0	0.0		
			W2	31.4	28.3	3.1	9.9					5	0	5	0	37.5	0.0		
			W3	2.9	2.5	0.4	13.8					5	0	5	0	0.0	0.0		
	R2	BEDROOM	W4	7.8	4.3	3.5	44.9	77.5	72.7	4.8	6.2	5	0	5	0	40.0	0.0		
			W5	11.9	10.3	1.6	13.4	11	1	10	1	9.1	0.0						
	R3	BEDROOM	W6	0.3	0.3	0.0	0.0	13.4	13.4	0.0	0.0	0	0	0	0	0.0	0.0		
			R4	L/K/D	W7	4.5	2.0	2.5	55.6	57.2	48.9	8.3	14.5	2	0	1	0	50.0	0.0
					W8	12.8	11.4	1.4	10.9	14	4	13	4	7.1	0.0				
F02	R1	L/K/D	W1	35.8	34.7	1.1	3.1	99.7	99.7	0.0	0.0	11	0	7	0	36.4	0.0		
			W2	5.4	4.5	0.9	16.7	6	0	2	0	66.7	0.0						
			W3	5.3	5.3	0.0	0.0	11	8	11	8	0.0	0.0						
	R2	BEDROOM	W4	9.8	9.4	0.4	4.1	97.8	97.8	0.0	0.0	N/A	N/A	N/A	N/A	N/A	N/A		
			R3	BEDROOM	W5	34.1	32.3	1.8	5.3	99.4	99.4	0.0	0.0	N/A	N/A	N/A	N/A	N/A	N/A
	R4	L/K/D	W6	31.5	29.2	2.3	7.3	98.0	98.0	0.0	0.0	5	0	3	0	40.0	0.0		
			W7	34.5	31.5	3.0	8.7	8	0	6	0	25.0	0.0						
			W8	3.1	2.6	0.5	16.1	5	0	5	0	0.0	0.0						
	R5	BEDROOM	W9	8.4	5.3	3.1	36.9	82.2	82.2	0.0	0.0	5	0	3	0	40.0	0.0		
			W10	14.4	13.0	1.4	9.7	15	1	14	1	6.7	0.0						
	R6	BEDROOM	W11	0.4	0.4	0.0	0.0	13.5	13.5	0.0	0.0	1	0	1	0	0.0	0.0		
			R7	L/K/D	W12	4.7	2.6	2.1	44.7	57.7	54.9	2.8	4.9	1	0	1	0	50.0	0.0
					W13	14.4	13.2	1.2	8.3	18	5	17	5	5.6	0.0				
F03	R1	L/K/D	W1	36.5	35.1	1.4	3.8	100.0	100.0	0.0	0.0	9	0	7	0	22.2	0.0		
			W2	4.6	3.9	0.7	15.2	6	0	4	0	33.3	0.0						
			W3	6.1	6.1	0.0	0.0	13	10	13	10	0.0	0.0						
	R2	BEDROOM	W4	11.2	10.6	0.6	5.4	97.8	97.8	0.0	0.0	N/A	N/A	N/A	N/A	N/A	N/A		
			R3	BEDROOM	W5	37.0	35.1	1.9	5.1	100.0	100.0	0.0	0.0	N/A	N/A	N/A	N/A	N/A	N/A
	R4	L/K/D	W6	36.3	34.1	2.2	6.1	98.0	98.0	0.0	0.0	8	0	6	0	25.0	0.0		
			W7	37.1	34.4	2.7	7.3	9	0	7	0	33.3	0.0						
			W8	3.1	2.7	0.4	12.9	4	0	4	0	0.0	0.0						
	R5	BEDROOM	W9	8.4	5.9	2.5	29.8	81.9	81.9	0.0	0.0	18	2	17	2	5.6	0.0		
			W10	16.4	15.3	1.1	6.7	0	0	0	0	0.0	0.0						
	R6	BEDROOM	W11	0.3	0.3	0.0	0.0	13.5	13.5	0.0	0.0	0	0	0	0	0.0	0.0		
			R7	L/K/D	W12	4.7	3.1	1.6	34.0	58.5	58.5	0.0	0.0	2	0	1	0	50.0	0.0
					W13	15.3	14.4	0.9	5.9	18	4	17	4	5.6	0.0				
F04	R1	L/K/D	W1	37.0	36.0	1.0	2.7	100.0	100.0	0.0	0.0	9	0	9	0	0.0	0.0		
			W2	4.7	4.2	0.5	10.6	6	0	6	0	0.0	0.0						
			W3	6.7	6.7	0.0	0.0	14	11	14	11	0.0	0.0						
	R2	BEDROOM	W4	11.5	11.1	0.4	3.5	97.8	97.8	0.0	0.0	N/A	N/A	N/A	N/A	N/A	N/A		
			R3	BEDROOM	W5	37.6	36.2	1.4	3.7	100.0	100.0	0.0	0.0	N/A	N/A	N/A	N/A	N/A	N/A
	R4	L/K/D	W6	36.7	35.2	1.5	4.1	98.0	98.0	0.0	0.0	8	0	7	0	12.5	0.0		
			W7	37.5	35.7	1.8	4.8	9	0	8	0	11.1	0.0						
			W8	3.1	2.9	0.2	6.5	4	0	4	0	0.0	0.0						
	R5	BEDROOM	W9	8.9	7.4	1.5	16.9	81.9	81.9	0.0	0.0	6	0	5	0	16.7	0.0		
			W10	18.4	17.7	0.7	3.8	20	2	19	2	5.0	0.0						
	R6	BEDROOM	W11	0.3	0.3	0.0	0.0	13.5	13.5	0.0	0.0	0	0	0	0	0.0	0.0		
			R7	L/K/D	W12	5.3	4.2	1.1	20.8	58.5	58.5	0.0	0.0	3	0	3	0	0.0	0.0
					W13	17.5	16.9	0.6	3.4	20	4	20	4	0.0	0.0				
ABERFELDY ESTATE PHASE THREE BLOCK J																			
F00	R1	L/K/D	W1	35.0	30.2	4.8	13.7	100.0	100.0	0.0	0.0	8	0	8	0	0.0	0.0		
			W2	24.0	23.8	0.2	0.8	34	13	34	13	0.0	0.0						
			W3	24.1	24.0	0.1	0.4	43	11	43	11	0.0	0.0						
	R2	BEDROOM	W4	35.1	29.5	5.6	16.0	98.5	98.2	0.3	0.3	N/A	N/A	N/A	N/A	N/A	N/A		
			R3	L/K/D	W5	35.1	29.0	6.1	17.4	99.0	99.0	0.0	0.0	N/A	N/A	N/A	N/A	N/A	N/A
	R4	BEDROOM	W6	34.9	28.2	6.7	19.2	97.1	96.8	0.3	0.3	N/A	N/A	N/A	N/A	N/A	N/A		
			R5	L/K/D	W7	34.6	27.4	7.2	20.8	99.3	99.3	0.0	0.0	N/A	N/A	N/A	N/A	N/A	N/A
					R6	BEDROOM	W8	34.2	26.4	7.8	22.8	97.1	95.6	1.5	1.5	N/A	N/A	N/A	N/A
F01	R1	L/K/D	W1	36.7	32.5	4.2	11.4	100.0	100.0	0.0	0.0	9	0	9	0	0.0	0.0		
			W2	20.3	20.1	0.2	1.0	27	13	27	13	0.0	0.0						
			W3	22.8	22.6	0.2	0.9	49	19	49	19	0.0	0.0						
	R2	BEDROOM	W4	36.8	31.9	4.9	13.3	99.4	99.4	0.0	0.0	N/A	N/A	N/A	N/A	N/A	N/A		
			R3	L/K/D	W5	1.9	1.9	0.0	0.0	99.2	99.2	0.0	0.0	3	3	3	3	0.0	0.0
	W6	6.4			2.9	3.5	54.7	0	0	0	0	0.0	0.0						
	W7	36.8			31.4	5.4	14.7	9	0	9	0	0.0	0.0						
	R4	BEDROOM	W8	14.4	10.1	4.3	29.9	98.6	97.8	0.8	0.8	N/A	N/A	N/A	N/A	N/A	N/A		
			R5	L/K/D	W9	2.8	2.8	0.0	0.0	99.5	99.5	0.0	0.0	5	5	5	5	0.0	0.0

FLOOR	ROOM	ROOM USE	WINDOW	VERTICAL SKY COMPONENT				NO SKY LINE				ANNUAL PROBABLE SUNLIGHT HOURS					
				BASELINE	CONSENTED	LOSS	%	BASELINE	CONSENTED	LOSS	%	WINDOW BASELINE		WINDOW CONSENTED		TOTAL % LOSS	WINTER % LOSS
												TOTAL	WINTER	TOTAL	WINTER		
			W10	6.9	3.3	3.6	52.2					0	0	0	0	0.0	0.0
			W11	36.7	29.9	6.8	18.5					9	0	9	0	0.0	0.0
	R6	BEDROOM	W12	14.3	8.4	5.9	41.3	98.5	97.5	1.0	1.0	N/A	N/A	N/A	N/A	N/A	N/A
	R7	L/K/D	W13	17.2	17.2	0.0	0.0	100.0	99.0	1.0	1.0	36	13	36	13	0.0	0.0
			W14	6.5	3.4	3.1	47.7					0	0	0	0	0.0	0.0
			W15	36.5	28.0	8.5	23.3					10	0	10	0	0.0	0.0
	R8	BEDROOM	W16	13.0	6.4	6.6	50.8	96.1	90.5	5.6	5.8	N/A	N/A	N/A	N/A	N/A	N/A
	R9	L/K/D	W17	6.1	5.9	0.2	3.3	98.4	98.4	0.0	0.0	N/A	N/A	N/A	N/A	N/A	N/A
			W18	34.7	24.0	10.7	30.8					N/A	N/A	N/A	N/A	N/A	N/A
			W19	33.3	21.7	11.6	34.8					N/A	N/A	N/A	N/A	N/A	N/A
	R10	BEDROOM	W20	20.5	20.3	0.2	1.0	92.7	92.1	0.6	0.6	N/A	N/A	N/A	N/A	N/A	N/A
			W21	11.7	10.5	1.2	10.3					N/A	N/A	N/A	N/A	N/A	N/A
F02	R1	L/K/D	W1	37.2	33.7	3.5	9.4	99.9	99.9	0.0	0.0	9	0	9	0	0.0	0.0
			W2	21.0	20.8	0.2	1.0					28	14	28	14	0.0	0.0
			W3	23.5	23.3	0.2	0.9					49	19	49	19	0.0	0.0
	R2	BEDROOM	W4	37.2	33.1	4.1	11.0	98.5	98.2	0.3	0.3	N/A	N/A	N/A	N/A	N/A	N/A
	R3	L/K/D	W5	2.2	2.2	0.0	0.0	99.4	99.4	0.0	0.0	3	3	3	3	0.0	0.0
			W6	6.6	3.8	2.8	42.4					0	0	0	0	0.0	0.0
			W7	37.2	32.7	4.5	12.1					9	0	9	0	0.0	0.0
	R4	BEDROOM	W8	14.6	10.9	3.7	25.3	98.6	98.6	0.0	0.0	N/A	N/A	N/A	N/A	N/A	N/A
	R5	L/K/D	W9	3.5	3.5	0.0	0.0	99.7	99.7	0.0	0.0	6	6	6	6	0.0	0.0
			W10	7.3	4.2	3.1	42.5					0	0	0	0	0.0	0.0
			W11	37.2	31.4	5.8	15.6					9	0	9	0	0.0	0.0
	R6	BEDROOM	W12	14.6	9.2	5.4	37.0	98.5	98.2	0.3	0.3	N/A	N/A	N/A	N/A	N/A	N/A
	R7	L/K/D	W13	3.3	3.3	0.0	0.0	100.0	100.0	0.0	0.0	5	5	5	5	0.0	0.0
			W14	6.9	4.3	2.6	37.7					0	0	0	0	0.0	0.0
			W15	37.2	29.8	7.4	19.9					10	0	10	0	0.0	0.0
	R8	BEDROOM	W16	13.5	7.0	6.5	48.1	98.5	93.8	4.7	4.8	N/A	N/A	N/A	N/A	N/A	N/A
	R9	L/K/D	W17	6.4	6.2	0.2	3.1	98.4	98.4	0.0	0.0	N/A	N/A	N/A	N/A	N/A	N/A
			W18	36.4	26.4	10.0	27.5					N/A	N/A	N/A	N/A	N/A	N/A
			W19	34.8	24.0	10.8	31.0					N/A	N/A	N/A	N/A	N/A	N/A
	R10	BEDROOM	W20	22.5	22.3	0.2	0.9	92.7	92.1	0.6	0.6	N/A	N/A	N/A	N/A	N/A	N/A
			W21	13.0	11.7	1.3	10.0					N/A	N/A	N/A	N/A	N/A	N/A
F03	R1	L/K/D	W1	37.5	34.9	2.6	6.9	99.9	99.9	0.0	0.0	10	0	10	0	0.0	0.0
			W2	21.3	21.1	0.2	0.9					28	14	28	14	0.0	0.0
			W3	23.8	23.6	0.2	0.8					49	19	49	19	0.0	0.0
	R2	BEDROOM	W4	37.5	34.5	3.0	8.0	98.5	98.5	0.0	0.0	N/A	N/A	N/A	N/A	N/A	N/A
	R3	L/K/D	W5	2.8	2.8	0.0	0.0	99.5	99.5	0.0	0.0	4	4	4	4	0.0	0.0
			W6	6.7	4.7	2.0	29.9					0	0	0	0	0.0	0.0
			W7	37.5	34.1	3.4	9.1					9	0	9	0	0.0	0.0
	R4	BEDROOM	W8	14.8	11.8	3.0	20.3	98.6	98.6	0.0	0.0	N/A	N/A	N/A	N/A	N/A	N/A
	R5	L/K/D	W9	4.3	4.3	0.0	0.0	100.0	100.0	0.0	0.0	6	6	6	6	0.0	0.0
			W10	7.4	5.1	2.3	31.1					0	0	0	0	0.0	0.0
			W11	37.6	33.0	4.6	12.2					9	0	9	0	0.0	0.0
	R6	BEDROOM	W12	14.8	10.6	4.2	28.4	98.5	98.5	0.0	0.0	N/A	N/A	N/A	N/A	N/A	N/A
	R7	L/K/D	W13	3.9	3.9	0.0	0.0	100.0	100.0	0.0	0.0	6	6	6	6	0.0	0.0
			W14	7.1	5.1	2.0	28.2					0	0	0	0	0.0	0.0
			W15	37.5	31.6	5.9	15.7					10	0	10	0	0.0	0.0
	R8	BEDROOM	W16	13.7	8.5	5.2	38.0	98.5	94.9	3.6	3.7	N/A	N/A	N/A	N/A	N/A	N/A
	R9	L/K/D	W17	6.5	6.4	0.1	1.5	98.4	98.4	0.0	0.0	N/A	N/A	N/A	N/A	N/A	N/A
			W18	36.8	28.9	7.9	21.5					N/A	N/A	N/A	N/A	N/A	N/A
			W19	35.1	26.6	8.5	24.2					N/A	N/A	N/A	N/A	N/A	N/A
	R10	BEDROOM	W20	24.4	24.3	0.1	0.4	93.0	92.4	0.6	0.6	N/A	N/A	N/A	N/A	N/A	N/A
			W21	13.6	12.5	1.1	8.1					N/A	N/A	N/A	N/A	N/A	N/A
F04	R1	L/K/D	W1	37.7	35.9	1.8	4.8	99.9	99.9	0.0	0.0	9	0	9	0	0.0	0.0
			W2	21.6	21.4	0.2	0.9					28	14	28	14	0.0	0.0
			W3	24.1	23.9	0.2	0.8					49	19	49	19	0.0	0.0
	R2	BEDROOM	W4	37.7	35.6	2.1	5.6	98.5	98.5	0.0	0.0	N/A	N/A	N/A	N/A	N/A	N/A
	R3	L/K/D	W5	5.7	5.7	0.0	0.0	100.0	100.0	0.0	0.0	8	8	8	8	0.0	0.0
			W6	6.8	5.5	1.3	19.1					0	0	0	0	0.0	0.0
			W7	37.8	35.4	2.4	6.3					9	0	9	0	0.0	0.0
	R4	BEDROOM	W8	14.9	12.8	2.1	14.1	98.6	98.6	0.0	0.0	N/A	N/A	N/A	N/A	N/A	N/A
	R5	L/K/D	W9	37.8	34.6	3.2	8.5	100.0	100.0	0.0	0.0	9	0	9	0	0.0	0.0
			W10	5.4	5.4	0.0	0.0					8	8	8	8	0.0	0.0
	R6	BEDROOM	W11	15.0	11.9	3.1	20.7	98.5	98.5	0.0	0.0	N/A	N/A	N/A	N/A	N/A	N/A
	R7	L/K/D	W12	37.8	33.7	4.1	10.8	100.0	100.0	0.0	0.0	10	0	10	0	0.0	0.0
			W13	4.6	4.6	0.0	0.0					7	7	7	7	0.0	0.0
	R8	BEDROOM	W14	13.8	10.1	3.7	26.8	98.5	98.5	0.0	0.0	N/A	N/A	N/A	N/A	N/A	N/A
	R9	L/K/D	W15	7.5	7.5	0.0	0.0	98.4	98.4	0.0	0.0	N/A	N/A	N/A	N/A	N/A	N/A
			W16	37.1	31.6	5.5	14.8					N/A	N/A	N/A	N/A	N/A	N/A

FLOOR	ROOM	ROOM USE	WINDOW	VERTICAL SKY COMPONENT				NO SKY LINE				ANNUAL PROBABLE SUNLIGHT HOURS					
				BASELINE	CONSENTED	LOSS	%	BASELINE	CONSENTED	LOSS	%	WINDOW BASELINE		WINDOW CONSENTED		TOTAL % LOSS	WINTER % LOSS
				TOTAL	WINTER	TOTAL	WINTER	TOTAL	WINTER	% LOSS	% LOSS						
	R10	BEDROOM	W17	35.3	29.3	6.0	17.0					N/A	N/A	N/A	N/A	N/A	N/A
			W18	26.6	26.5	0.1	0.4	94.2	93.6	0.6	0.6	N/A	N/A	N/A	N/A	N/A	N/A
			W19	14.1	13.3	0.8	5.7					N/A	N/A	N/A	N/A	N/A	N/A
F05	R1	L/K/D	W1	37.9	36.9	1.0	2.6	99.9	99.9	0.0	0.0	10	0	10	0	0.0	0.0
			W2	38.4	38.2	0.2	0.5					56	20	56	20	0.0	0.0
			W3	38.2	38.0	0.2	0.5					54	19	54	19	0.0	0.0
	R2	BEDROOM	W4	37.9	36.7	1.2	3.2	98.5	98.5	0.0	0.0	N/A	N/A	N/A	N/A	N/A	N/A
	R3	L/K/D	W5	6.0	6.0	0.0	0.0	100.0	100.0	0.0	0.0	8	8	8	8	0.0	0.0
			W6	6.2	5.7	0.5	8.1					8	8	8	8	0.0	0.0
			W7	38.0	36.6	1.4	3.7					9	0	9	0	0.0	0.0
	R4	BEDROOM	W8	14.0	12.7	1.3	9.3	98.6	98.6	0.0	0.0	N/A	N/A	N/A	N/A	N/A	N/A
	R5	L/K/D	W9	5.6	5.6	0.0	0.0	100.0	100.0	0.0	0.0	8	8	8	8	0.0	0.0
			W10	6.9	6.2	0.7	10.1					8	8	8	8	0.0	0.0
			W11	38.0	36.2	1.8	4.7					9	0	9	0	0.0	0.0
	R6	BEDROOM	W12	14.0	12.2	1.8	12.9	98.5	98.5	0.0	0.0	N/A	N/A	N/A	N/A	N/A	N/A
	R7	L/K/D	W13	4.7	4.7	0.0	0.0	100.0	100.0	0.0	0.0	6	6	6	6	0.0	0.0
			W14	6.7	6.0	0.7	10.4					6	6	6	6	0.0	0.0
			W15	38.0	35.7	2.3	6.1					11	0	11	0	0.0	0.0
	R8	BEDROOM	W16	12.9	10.8	2.1	16.3	98.5	98.5	0.0	0.0	N/A	N/A	N/A	N/A	N/A	N/A
	R9	L/K/D	W17	9.4	9.4	0.0	0.0	98.4	98.4	0.0	0.0	N/A	N/A	N/A	N/A	N/A	N/A
			W18	37.2	34.2	3.0	8.1					N/A	N/A	N/A	N/A	N/A	N/A
			W19	35.5	32.1	3.4	9.6					N/A	N/A	N/A	N/A	N/A	N/A
	R10	BEDROOM	W20	29.0	29.0	0.0	0.0	96.8	96.8	0.0	0.0	N/A	N/A	N/A	N/A	N/A	N/A
			W21	14.6	14.1	0.5	3.4					N/A	N/A	N/A	N/A	N/A	N/A
CULLODEN PRIMARY SCHOOL																	
F00	R1	TEACHER ROOM	W1	7.0	6.8	0.2	2.9	0.0	0.0	0.0	0.0	2	2	2	2	0.0	0.0
			W2	7.3	6.9	0.4	5.5					2	2	2	2	0.0	0.0
			W3	0.6	0.6	0.0	0.0					0	0	0	0	0.0	0.0
	R2	OFFICE	W4	9.5	8.8	0.7	7.4	0.0	0.0	0.0	0.0	N/A	N/A	N/A	N/A	N/A	N/A
	R3	OFFICE	W5	9.4	9.0	0.4	4.3	0.0	0.0	0.0	0.0	N/A	N/A	N/A	N/A	N/A	N/A
	R4	STAFF ROOM	W6	28.0	24.2	3.8	13.6	0.2	0.1	0.1	50.0	21	1	19	1	9.5	0.0
			W7	31.5	27.0	4.5	14.3					29	3	27	3	6.9	0.0
			W8	23.0	12.4	10.6	46.1					9	0	1	0	0.0	0.0
			W9	26.0	16.5	9.5	36.5					0	0	1	0	0.0	0.0
			W10	26.0	18.2	7.8	30.0					0	0	1	0	0.0	0.0
			W11	25.8	19.8	6.0	23.3					1	0	2	0	-100.0	0.0
			W12	30.3	30.3	0.0	0.0					56	24	56	24	0.0	0.0
			W13	30.5	30.5	0.0	0.0					56	24	56	24	0.0	0.0
			W14	20.4	20.4	0.0	0.0					30	7	30	7	0.0	0.0
			W15	7.9	8.4	-0.5	-6.3					2	2	2	2	0.0	0.0
	R5	OFFICE	W16	17.9	7.2	10.7	59.8	0.3	0.3	0.0	0.0	N/A	N/A	N/A	N/A	N/A	N/A
	R6	OFFICE	W17	18.4	8.3	10.1	54.9	0.0	0.0	0.0	0.0	N/A	N/A	N/A	N/A	N/A	N/A
	R7	OFFICE	W18	18.2	7.1	11.1	61.0	0.0	0.0	0.0	0.0	N/A	N/A	N/A	N/A	N/A	N/A
			W19	18.3	7.4	10.9	59.6					N/A	N/A	N/A	N/A	N/A	N/A
	R8	OFFICE	W20	18.2	6.7	11.5	63.2	0.0	0.0	0.0	0.0	N/A	N/A	N/A	N/A	N/A	N/A
	R9	OFFICE	W21	17.6	5.7	11.9	67.6	0.0	0.0	0.0	0.0	N/A	N/A	N/A	N/A	N/A	N/A
			W22	17.9	6.1	11.8	65.9					N/A	N/A	N/A	N/A	N/A	N/A
	R10	OFFICE	W23	16.1	5.1	11.0	68.3	0.2	0.2	0.0	0.0	N/A	N/A	N/A	N/A	N/A	N/A
	R11	OFFICE	W24	12.5	7.0	5.5	44.0	0.0	0.0	0.0	0.0	N/A	N/A	N/A	N/A	N/A	N/A
	R12	KITCHEN	W25	22.1	13.7	8.4	38.0	16.0	12.6	3.4	21.3	N/A	N/A	N/A	N/A	N/A	N/A
			W26	24.2	15.5	8.7	36.0					N/A	N/A	N/A	N/A	N/A	N/A
			W27	26.9	5.0	21.9	81.4					N/A	N/A	N/A	N/A	N/A	N/A
	R13	MAIN HALL	W28	28.3	15.5	12.8	45.2	50.1	22.6	27.5	54.9	31	4	16	3	48.4	25.0
			W29	24.5	10.6	13.9	56.7					3	0	0	0	100.0	0.0
			W30	25.3	11.2	14.1	55.7					4	0	0	0	100.0	0.0
			W31	26.1	12.1	14.0	53.6					4	0	0	0	100.0	0.0
			W32	26.9	12.6	14.3	53.2					4	0	0	0	100.0	0.0
			W33	27.4	13.0	14.4	52.6					3	0	0	0	100.0	0.0
			W34	27.9	13.5	14.4	51.6					3	0	0	0	100.0	0.0
			W35	28.4	13.8	14.6	51.4					5	0	2	0	60.0	0.0
			W36	28.9	14.2	14.7	50.9					5	0	2	0	60.0	0.0
			W37	29.2	14.5	14.7	50.3					5	0	2	0	60.0	0.0
			W38	15.4	7.4	8.0	51.9					0	0	0	0	0.0	0.0
			W39	29.8	14.7	15.1	50.7					5	0	3	0	40.0	0.0
			W40	22.0	14.9	7.1	32.3					27	10	25	10	7.4	0.0
			W41	10.5	9.2	1.3	12.4					4	0	4	0	0.0	0.0
			W42	10.6	6.5	4.1	38.7					15	7	13	7	13.3	0.0
			W43	10.5	6.6	3.9	37.1					15	7	13	7	13.3	0.0
			W44	10.5	6.7	3.8	36.2					15	7	13	7	13.3	0.0
			W45	10.5	6.8	3.7	35.2					16	7	14	7	12.5	0.0

FLOOR	ROOM	ROOM USE	WINDOW	VERTICAL SKY COMPONENT				NO SKY LINE				ANNUAL PROBABLE SUNLIGHT HOURS					
				BASELINE	CONSENTED	LOSS	%	BASELINE	CONSENTED	LOSS	%	WINDOW BASELINE		WINDOW CONSENTED		TOTAL % LOSS	WINTER % LOSS
												TOTAL	WINTER	TOTAL	WINTER		
			W46	10.5	7.0	3.5	33.3					16	7	14	7	12.5	0.0
			W47	10.5	7.1	3.4	32.4					15	7	13	7	13.3	0.0
			W48	10.6	7.3	3.3	31.1					14	7	13	7	7.1	0.0
			W49	10.6	7.4	3.2	30.2					14	7	13	7	7.1	0.0
			W50	10.6	7.5	3.1	29.2					15	7	14	7	6.7	0.0
			W51	10.6	7.7	2.9	27.4					14	7	14	7	0.0	0.0
			W52	10.7	7.8	2.9	27.1					14	7	14	7	0.0	0.0
			W53	21.8	17.7	4.1	18.8					31	15	31	15	0.0	0.0
			W54	24.5	23.9	0.6	2.4					52	29	49	27	5.8	6.9
			W55	23.5	22.9	0.6	2.6					45	29	42	27	6.7	6.9
			W56	22.6	22.1	0.5	2.2					44	29	41	27	6.8	6.9
			W57	21.7	21.1	0.6	2.8					41	29	38	27	7.3	6.9
			W58	20.8	20.2	0.6	2.9					38	29	36	27	5.3	6.9
			W59	19.9	19.3	0.6	3.0					36	29	34	27	5.6	6.9
			W60	19.0	18.3	0.7	3.7					35	29	33	27	5.7	6.9
			W61	17.8	17.1	0.7	3.9					30	29	28	27	6.7	6.9
			W62	16.7	16.0	0.7	4.2					29	29	27	27	6.9	6.9
			W63	15.3	14.9	0.4	2.6					27	27	27	27	0.0	0.0
	R14	OFFICE	W64	22.8	14.0	8.8	38.6	0.0	0.0	0.0	0.0	N/A	N/A	N/A	N/A	N/A	N/A
	R15	OFFICE	W65	23.7	6.0	17.7	74.7	0.0	0.0	0.0	0.0	N/A	N/A	N/A	N/A	N/A	N/A
	R16	OFFICE	W66	23.8	6.2	17.6	73.9	0.0	0.0	0.0	0.0	N/A	N/A	N/A	N/A	N/A	N/A
	R17	NURSERY	W67	0.9	0.9	0.0	0.0	46.3	46.2	0.1	0.2	0	0	0	0	0.0	0.0
			W68	1.7	1.7	0.0	0.0					2	2	2	2	0.0	0.0
			W69	1.3	1.3	0.0	0.0					0	0	0	0	0.0	0.0
			W70	1.6	1.6	0.0	0.0					0	0	0	0	0.0	0.0
			W71	1.0	1.0	0.0	0.0					0	0	0	0	0.0	0.0
			W72	2.2	1.4	0.8	36.4					2	0	0	0	100.0	0.0
			W73	2.3	0.7	1.6	69.6					3	1	1	1	66.7	0.0
			W74	21.7	4.6	17.1	78.8					19	2	3	0	84.2	100.0
			W75	17.1	0.0	17.1	100.0					16	3	0	0	100.0	100.0
			W76	29.6	17.0	12.6	42.6					0	0	0	0	0.0	0.0
	R18	NURSERY	W77	2.2	2.2	0.0	0.0	40.3	7.6	32.7	81.1	4	4	4	4	0.0	0.0
			W78	1.5	1.4	0.1	6.7					1	1	1	1	0.0	0.0
	R19	RECEPTION	W79	0.0	0.0	0.0	0.0	0.0	0.0	0.0	0.0	0	0	0	0	0.0	0.0
			W80	0.0	0.0	0.0	0.0					1	1	1	1	0.0	0.0
			W81	0.2	0.2	0.0	0.0					0	0	0	0	0.0	0.0
	R20	RECEPTION	W82	29.6	21.2	8.4	28.4	19.8	18.5	1.3	6.6	N/A	N/A	N/A	N/A	N/A	N/A
			W83	29.4	21.0	8.4	28.6					N/A	N/A	N/A	N/A	N/A	N/A
			W84	27.6	20.6	7.0	25.4					N/A	N/A	N/A	N/A	N/A	N/A
			W85	10.5	10.4	0.1	1.0					N/A	N/A	N/A	N/A	N/A	N/A
	R21	RECEPTION	W86	0.3	0.3	0.0	0.0	0.8	0.8	0.0	0.0	0	0	0	0	0.0	0.0
			W87	1.8	1.7	0.1	5.6					3	2	3	2	0.0	0.0
			W88	3.1	3.0	0.1	3.2					7	4	7	4	0.0	0.0
			W89	28.7	21.8	6.9	24.0					32	5	25	5	21.9	0.0
			W90	26.2	20.1	6.1	23.3					35	7	28	7	20.0	0.0

LANSBURY GARDENS 2-12

F00	R1	LIVING ROOM	W1	25.5	16.2	9.3	36.5	98.9	98.7	0.2	0.2	36	8	16	2	55.6	75.0
			W2	29.6	29.6	0.0	0.0					33	6	33	6	0.0	0.0
	R2	LIVING ROOM	W3	18.6	18.6	0.0	0.0	98.9	85.9	13.0	13.1	40	7	40	7	0.0	0.0
			W4	30.7	30.7	0.0	0.0					48	10	48	10	0.0	0.0
			W5	31.9	31.9	0.0	0.0					36	7	36	7	0.0	0.0
			W6	29.8	29.8	0.0	0.0					16	1	16	1	0.0	0.0
			W7	17.8	17.8	0.0	0.0					0	0	0	0	0.0	0.0
			W8	26.0	13.3	12.7	48.8					35	7	14	2	60.0	71.4
	R3	LIVING ROOM	W9	26.2	12.3	13.9	53.1	98.4	98.3	0.1	0.1	36	7	14	2	61.1	71.4
			W10	31.0	31.0	0.0	0.0					25	1	25	1	0.0	0.0
	R4	LIVING ROOM	W11	26.2	12.0	14.2	54.2	99.1	99.0	0.1	0.1	36	7	14	2	61.1	71.4
			W12	16.7	16.7	0.0	0.0					36	5	36	5	0.0	0.0
			W13	19.7	19.7	0.0	0.0					42	7	42	7	0.0	0.0
			W14	70.1	70.1	0.0	0.0					43	8	43	8	0.0	0.0
			W15	31.9	31.9	0.0	0.0					34	5	34	5	0.0	0.0
			W16	70.2	70.2	0.0	0.0					43	8	43	8	0.0	0.0
			W17	31.9	31.9	0.0	0.0					34	5	34	5	0.0	0.0
			W18	32.0	32.0	0.0	0.0					35	6	35	6	0.0	0.0
			W19	70.2	70.2	0.0	0.0					44	8	44	8	0.0	0.0
			W20	31.9	31.9	0.0	0.0					35	6	35	6	0.0	0.0
			W21	70.2	70.2	0.0	0.0					45	9	45	9	0.0	0.0
			W22	31.9	31.9	0.0	0.0					35	6	35	6	0.0	0.0
			W23	70.3	70.3	0.0	0.0					45	9	45	9	0.0	0.0
			W24	32.0	32.0	0.0	0.0					35	6	35	6	0.0	0.0
			W25	70.3	70.3	0.0	0.0					45	9	45	9	0.0	0.0

FLOOR	ROOM	ROOM USE	WINDOW	VERTICAL SKY COMPONENT				NO SKY LINE				ANNUAL PROBABLE SUNLIGHT HOURS					
				BASELINE	CONSENTED	LOSS	%	BASELINE	CONSENTED	LOSS	%	WINDOW BASELINE		WINDOW CONSENTED		TOTAL % LOSS	WINTER % LOSS
												TOTAL	WINTER	TOTAL	WINTER		
			W26	21.4	21.4	0.0	0.0					0	0	0	0	0.0	0.0
			W27	18.2	18.2	0.0	0.0					0	0	0	0	0.0	0.0
	R5	LIVING ROOM	W28	25.7	12.0	13.7	53.3	98.9	98.7	0.2	0.2	34	5	14	2	58.8	60.0
			W29	31.3	31.3	0.0	0.0					28	1	28	1	0.0	0.0
	R6	LIVING ROOM	W30	24.6	12.4	12.2	49.6	98.7	97.0	1.7	1.7	35	6	19	6	45.7	0.0
			W31	24.3	24.3	0.0	0.0					12	1	12	1	0.0	0.0
F01	R1	BEDROOM	W1	29.4	22.3	7.1	24.1	97.8	91.2	6.6	6.7	43	14	28	5	34.9	64.3
	R2	BEDROOM	W2	29.7	20.8	8.9	30.0	99.7	70.8	28.9	29.0	45	15	28	8	37.8	46.7
	R3	BEDROOM	W3	29.6	18.8	10.8	36.5	97.8	76.2	21.6	22.1	42	12	23	5	45.2	58.3
	R4	BEDROOM	W4	30.0	17.9	12.1	40.3	99.7	47.4	52.3	52.5	46	15	26	8	43.5	46.7
	R5	BEDROOM	W5	29.9	17.2	12.7	42.5	97.8	60.2	37.6	38.4	43	11	23	5	46.5	54.5
	R6	BEDROOM	W6	30.3	17.2	13.1	43.2	99.7	33.7	66.0	66.2	47	14	26	8	44.7	42.9
	R7	BEDROOM	W7	30.0	16.8	13.2	44.0	97.8	58.0	39.8	40.7	44	11	23	5	47.7	54.5
	R8	BEDROOM	W8	30.2	17.0	13.2	43.7	99.7	32.1	67.6	67.8	44	12	25	7	43.2	41.7
	R9	BEDROOM	W9	29.8	16.8	13.0	43.6	97.8	58.0	39.8	40.7	41	9	22	4	46.3	55.6
	R10	BEDROOM	W10	29.8	17.0	12.8	43.0	99.7	32.1	67.6	67.8	42	10	25	7	40.5	30.0
	R11	BEDROOM	W11	29.0	16.8	12.2	42.1	97.8	58.0	39.8	40.7	40	8	23	5	42.5	37.5
	R12	BEDROOM	W12	28.6	17.1	11.5	40.2	99.4	37.8	61.6	62.0	42	9	26	8	38.1	11.1
LOREN APPARTMENTS																	
F00	R1	L/K/D	W1	21.0	8.1	12.9	61.4	68.0	11.0	57.0	83.8	23	2	3	0	87.0	100.0
	R2	L/K/D	W2	24.2	8.9	15.3	63.2	56.1	13.5	42.6	75.9	30	2	10	0	66.7	100.0
	R3	BEDROOM	W3	23.4	10.1	13.3	56.8	99.6	56.1	43.5	43.7	29	2	15	2	48.3	0.0
	R4	BEDROOM	W4	23.4	11.9	11.5	49.1	97.2	73.8	23.4	24.1	26	1	17	1	34.6	0.0
	R5	BEDROOM	W5	16.5	11.8	4.7	28.5	98.6	97.4	1.2	1.2	24	1	20	2	16.7	-100.0
			W6	13.9	13.9	0.0	0.0					31	4	31	4	0.0	0.0
F01	R1	BEDROOM	W1	29.1	12.0	17.1	58.8	97.0	23.3	73.7	76.0	39	6	16	2	59.0	66.7
	R2	BEDROOM	W2	27.3	11.2	16.1	59.0	94.4	20.6	73.8	78.2	34	4	11	0	67.6	100.0
	R3	BEDROOM	W3	28.5	12.8	15.7	55.1	99.7	31.5	68.2	68.4	36	3	15	0	58.3	100.0
	R4	L/K/D	W4	27.8	13.7	14.1	50.7	81.3	33.9	47.4	58.3	36	4	19	3	47.2	25.0
	R5	L/K/D	W5	25.6	13.7	11.9	46.5	97.0	89.0	8.0	8.2	31	3	17	2	45.2	33.3
			W6	26.5	16.4	10.1	38.1					31	2	21	2	32.3	0.0
			W7	15.8	15.8	0.0	0.0					40	5	40	5	0.0	0.0
F02	R1	BEDROOM	W1	32.0	15.0	17.0	53.1	97.5	27.2	70.3	72.1	41	8	19	2	53.7	75.0
	R2	BEDROOM	W2	29.9	13.8	16.1	53.8	94.8	23.8	71.0	74.9	37	7	15	1	59.5	85.7
	R3	L/K/D	W3	31.1	15.5	15.6	50.2	99.5	45.7	53.8	54.1	39	6	19	1	51.3	83.3
			W4	30.4	16.2	14.2	46.7					39	6	23	4	41.0	33.3
	R4	L/K/D	W5	28.0	16.1	11.9	42.5	92.6	78.3	14.3	15.4	33	4	19	2	42.4	50.0
			W6	28.7	18.8	9.9	34.5					35	4	24	3	31.4	25.0
			W7	17.9	17.9	0.0	0.0					46	7	46	7	0.0	0.0
F03	R1	L/K/D	W1	30.8	18.4	12.4	40.3	98.8	48.8	50.0	50.6	43	10	27	4	37.2	60.0
			W2	30.2	17.9	12.3	40.7					35	7	19	1	45.7	85.7
	R2	BEDROOM	W3	32.1	20.1	12.0	37.4	100.0	44.1	55.9	55.9	41	8	26	3	36.6	62.5
	R3	BEDROOM	W4	31.1	20.4	10.7	34.4	97.9	72.6	25.3	25.8	39	6	27	4	30.8	33.3
	R4	BEDROOM	W5	30.1	21.6	8.5	28.2	90.2	90.2	0.0	0.0	37	5	26	3	29.7	40.0
			W6	20.0	20.0	0.0	0.0					54	8	54	8	0.0	0.0
SHERMAN HOUSE																	
F00	R1	LIVING ROOM	W1	28.2	28.2	0.0	0.0	100.0	100.0	0.0	0.0	N/A	N/A	N/A	N/A	N/A	N/A
			W2	31.1	27.1	4.0	12.9					N/A	N/A	N/A	N/A	N/A	N/A
	R2	BEDROOM	W3	28.7	24.0	4.7	16.4	98.3	97.0	1.3	1.3	N/A	N/A	N/A	N/A	N/A	N/A
	R3	BEDROOM	W4	25.3	22.8	2.5	9.9	95.0	94.0	1.0	1.1	N/A	N/A	N/A	N/A	N/A	N/A
	R4	KITCHEN	W5	30.4	24.0	6.4	21.1	98.9	98.3	0.6	0.6	N/A	N/A	N/A	N/A	N/A	N/A
	R5	LIVING ROOM	W6	29.7	23.0	6.7	22.6	99.3	88.9	10.4	10.5	N/A	N/A	N/A	N/A	N/A	N/A
			W7	30.0	12.7	17.3	57.7					46	12	16	3	65.2	75.0
	R6	BEDROOM	W8	27.5	10.6	16.9	61.5	86.6	35.6	51.0	58.9	41	10	11	2	73.2	80.0
	R7	BEDROOM	W9	28.5	10.2	18.3	64.2	89.9	33.4	56.5	62.8	41	11	12	2	70.7	81.8
	R8	BEDROOM	W10	28.1	9.5	18.6	66.2	89.4	20.8	68.6	76.7	39	10	11	2	71.8	80.0
	R9	BEDROOM	W11	27.0	9.1	17.9	66.3	88.2	18.2	70.0	79.4	30	5	7	0	76.7	100.0
	R10	LIVING ROOM	W12	28.3	9.5	18.8	66.4	98.1	14.0	84.1	85.7	41	11	13	3	68.3	72.7
	R11	KITCHEN	W13	20.2	16.4	3.8	18.8	83.7	75.0	8.7	10.4	N/A	N/A	N/A	N/A	N/A	N/A
	R12	KITCHEN	W14	16.1	8.0	8.1	50.3	91.4	50.9	40.5	44.3	36	5	20	1	44.4	80.0
			W15	19.3	9.7	9.6	49.7					44	8	27	1	38.6	87.5
	R13	LIVING ROOM	W16	21.4	11.4	10.0	46.7	100.0	100.0	0.0	0.0	43	10	24	2	44.2	80.0
			W17	31.3	31.3	0.0	0.0					29	4	29	4	0.0	0.0
F01	R1	L/K/D	W1	32.2	32.2	0.0	0.0	99.2	99.2	0.0	0.0	N/A	N/A	N/A	N/A	N/A	N/A

FLOOR	ROOM	ROOM USE	WINDOW	VERTICAL SKY COMPONENT				NO SKY LINE				ANNUAL PROBABLE SUNLIGHT HOURS					
				BASELINE	CONSENTED	LOSS	%	BASELINE	CONSENTED	LOSS	%	WINDOW BASELINE		WINDOW CONSENTED		TOTAL % LOSS	WINTER % LOSS
												TOTAL	WINTER	TOTAL	WINTER		
			W2	30.7	30.7	0.0	0.0					N/A	N/A	N/A	N/A	N/A	N/A
			W3	23.3	19.4	3.9	16.7					N/A	N/A	N/A	N/A	N/A	N/A
	R2	BEDROOM	W4	31.8	27.2	4.6	14.5	91.6	68.6	23.0	25.1	N/A	N/A	N/A	N/A	N/A	N/A
	R3	BEDROOM	W5	27.3	24.9	2.4	8.8	92.5	88.8	3.7	4.0	N/A	N/A	N/A	N/A	N/A	N/A
	R4	L/K/D	W6	32.2	26.1	6.1	18.9	99.2	91.9	7.3	7.4	6	0	0	0	100.0	0.0
			W7	31.5	25.0	6.5	20.6					6	0	0	0	100.0	0.0
			W8	19.4	3.8	15.6	80.4					31	13	7	4	77.4	69.2
	R5	BEDROOM	W9	31.2	12.8	18.4	59.0	92.9	28.9	64.0	68.9	44	12	16	2	63.6	83.3
	R6	BEDROOM	W10	31.3	12.2	19.1	61.0	96.5	35.7	60.8	63.0	44	12	15	2	65.9	83.3
	R7	BEDROOM	W11	31.1	11.6	19.5	62.7	96.5	24.4	72.1	74.7	44	12	14	2	68.2	83.3
	R8	BEDROOM	W12	31.0	11.5	19.5	62.9	93.5	21.2	72.3	77.3	43	11	14	2	67.4	81.8
	R9	L/K/D	W13	18.7	1.4	17.3	92.5	99.4	89.3	10.1	10.2	31	15	4	4	87.1	73.3
			W14	24.6	19.6	5.0	20.3					29	3	12	0	58.6	100.0
	R10	L/K/D	W15	20.0	10.4	9.6	48.0	99.8	99.8	0.0	0.0	42	10	26	1	38.1	90.0
			W16	23.3	12.6	10.7	45.9					50	14	32	1	36.0	92.9
			W17	25.0	14.2	10.8	43.2					51	15	33	2	35.3	86.7
			W18	20.3	20.0	0.3	1.5					22	5	20	4	9.1	20.0
F02	R1	L/K/D	W1	33.3	33.3	0.0	0.0	99.2	99.2	0.0	0.0	N/A	N/A	N/A	N/A	N/A	N/A
			W2	31.9	31.9	0.0	0.0					N/A	N/A	N/A	N/A	N/A	N/A
			W3	35.2	31.5	3.7	10.5					N/A	N/A	N/A	N/A	N/A	N/A
	R2	BEDROOM	W4	33.3	29.0	4.3	12.9	91.6	72.0	19.6	21.4	N/A	N/A	N/A	N/A	N/A	N/A
	R3	BEDROOM	W5	28.7	26.3	2.4	8.4	92.5	90.7	1.8	1.9	N/A	N/A	N/A	N/A	N/A	N/A
	R4	L/K/D	W6	33.5	27.8	5.7	17.0	99.2	95.0	4.2	4.2	6	0	0	0	100.0	0.0
			W7	32.7	26.6	6.1	18.7					5	0	0	0	100.0	0.0
			W8	35.1	17.7	17.4	49.6					52	17	24	4	53.8	76.5
	R5	BEDROOM	W9	33.5	15.1	18.4	54.9	92.9	33.1	59.8	64.4	48	15	19	2	60.4	86.7
	R6	BEDROOM	W10	33.4	14.6	18.8	56.3	96.8	39.5	57.3	59.2	48	15	18	2	62.5	86.7
	R7	BEDROOM	W11	33.4	14.1	19.3	57.8	96.5	30.4	66.1	68.5	47	14	17	2	63.8	85.7
	R8	BEDROOM	W12	33.3	14.0	19.3	58.0	93.5	25.5	68.0	72.7	48	15	17	2	64.6	86.7
	R9	L/K/D	W13	34.8	15.4	19.4	55.7	99.4	92.6	6.8	6.8	51	17	20	4	60.8	76.5
			W14	28.1	23.6	4.5	16.0					30	4	19	0	36.7	100.0
	R10	L/K/D	W15	22.5	13.9	8.6	38.2	100.0	99.8	0.2	0.2	48	14	35	3	27.1	78.6
			W16	26.2	16.5	9.7	37.0					59	19	42	4	28.8	78.9
			W17	27.8	17.8	10.0	36.0					58	21	39	4	32.8	81.0
			W18	35.2	35.0	0.2	0.6					33	5	33	5	0.0	0.0
F03	R1	L/K/D	W1	33.7	33.7	0.0	0.0	98.6	98.6	0.0	0.0	N/A	N/A	N/A	N/A	N/A	N/A
			W2	24.9	24.2	0.7	2.8					N/A	N/A	N/A	N/A	N/A	N/A
	R2	BEDROOM	W3	34.2	30.2	4.0	11.7	92.8	83.1	9.7	10.5	N/A	N/A	N/A	N/A	N/A	N/A
	R3	BEDROOM	W4	30.0	27.7	2.3	7.7	93.8	93.8	0.0	0.0	N/A	N/A	N/A	N/A	N/A	N/A
	R4	L/K/D	W5	34.1	28.9	5.2	15.2	98.7	96.0	2.7	2.7	6	0	0	0	100.0	0.0
			W6	24.1	12.3	11.8	49.0					33	6	18	0	45.5	100.0
	R5	BEDROOM	W7	34.4	17.9	16.5	48.0	89.6	58.2	31.4	35.0	48	15	26	5	45.8	66.7
	R6	BEDROOM	W8	34.3	17.5	16.8	49.0	96.8	45.3	51.5	53.2	48	15	26	5	45.8	66.7
	R7	BEDROOM	W9	34.4	17.0	17.4	50.6	96.5	38.5	58.0	60.1	48	15	24	5	50.0	66.7
	R8	BEDROOM	W10	34.3	17.0	17.3	50.4	90.1	52.5	37.6	41.7	48	15	24	5	50.0	66.7
	R9	L/K/D	W11	25.1	12.3	12.8	51.0	98.7	91.4	7.3	7.4	41	15	21	6	48.8	60.0
			W12	31.5	28.8	2.7	8.6					31	5	24	1	22.6	80.0
			W13	22.9	21.7	1.2	5.2					30	5	28	3	6.7	40.0
	R10	L/K/D	W14	25.2	19.0	6.2	24.6	99.0	92.2	6.8	6.9	55	15	47	7	14.5	53.3
			W15	28.7	21.9	6.8	23.7					66	21	56	11	15.2	47.6
			W16	25.6	25.4	0.2	0.8					26	4	26	4	0.0	0.0
ST.NICHOLAS CHURCH																	
F00	R1	ANCILLARY SPACE	W1	18.7	18.7	0.0	0.0	99.4	97.4	2.0	2.0	1	0	1	0	0.0	0.0
			W2	21.2	21.2	0.0	0.0					4	0	4	0	0.0	0.0
			W3	3.9	3.1	0.8	20.5					0	0	0	0	0.0	0.0
			W4	3.9	3.1	0.8	20.5					0	0	0	0	0.0	0.0
			W5	3.8	3.1	0.7	18.4					0	0	0	0	0.0	0.0
			W6	3.7	3.0	0.7	18.9					0	0	0	0	0.0	0.0
			W7	3.6	2.9	0.7	19.4					0	0	0	0	0.0	0.0
			W8	29.7	8.7	21.0	70.7					44	13	9	0	79.5	100.0
			W9	29.7	8.0	21.7	73.1					45	13	9	0	80.0	100.0
			W10	29.8	7.4	22.4	75.2					45	13	7	0	84.4	100.0
			W11	29.8	5.5	24.3	81.5					44	11	7	2	84.1	81.8
			W12	29.9	5.3	24.6	82.3					45	12	7	2	84.4	83.3
			W13	29.9	5.1	24.8	82.9					45	12	7	2	84.4	83.3
			W14	29.6	4.8	24.8	83.8					44	12	6	2	86.4	83.3
	R2	WORSHIP AREA	W15	30.4	27.6	2.8	9.2	98.9	93.9	5.0	5.1	N/A	N/A	N/A	N/A	N/A	N/A
			W16	30.3	27.1	3.2	10.6					N/A	N/A	N/A	N/A	N/A	N/A
			W17	30.2	26.5	3.7	12.3					N/A	N/A	N/A	N/A	N/A	N/A

FLOOR	ROOM	ROOM USE	WINDOW	VERTICAL SKY COMPONENT				NO SKY LINE				ANNUAL PROBABLE SUNLIGHT HOURS					
				BASELINE	CONSENTED	LOSS	%	BASELINE	CONSENTED	LOSS	%	WINDOW BASELINE		WINDOW CONSENTED		TOTAL % LOSS	WINTER % LOSS
												TOTAL	WINTER	TOTAL	WINTER		
			W18	26.4	9.2	17.2	65.2					N/A	N/A	N/A	N/A	N/A	N/A
			W19	26.5	9.3	17.2	64.9					N/A	N/A	N/A	N/A	N/A	N/A
			W20	22.8	7.5	15.3	67.1					N/A	N/A	N/A	N/A	N/A	N/A
	R3	WORSHIP AREA	W21	28.8	5.9	22.9	79.5	99.7	98.1	1.6	1.6	N/A	N/A	N/A	N/A	N/A	N/A
			W22	32.3	8.2	24.1	74.6					N/A	N/A	N/A	N/A	N/A	N/A
			W23	28.9	6.4	22.5	77.9					N/A	N/A	N/A	N/A	N/A	N/A
			W24	33.1	28.7	4.4	13.3					N/A	N/A	N/A	N/A	N/A	N/A
			W25	32.6	29.0	3.6	11.0					N/A	N/A	N/A	N/A	N/A	N/A
			W26	31.0	28.0	3.0	9.7					N/A	N/A	N/A	N/A	N/A	N/A
			W27	24.1	21.7	2.4	10.0					N/A	N/A	N/A	N/A	N/A	N/A
	R4	UNKNOWN	W28	20.2	14.5	5.7	28.2	94.1	53.6	40.5	43.0	38	11	29	8	23.7	27.3
	R5	UNKNOWN	W29	23.3	16.8	6.5	27.9	98.7	61.4	37.3	37.8	39	11	30	8	23.1	27.3
	R6	UNKNOWN	W30	25.4	18.3	7.1	28.0	99.3	68.0	31.3	31.5	40	11	29	7	27.5	36.4
	R7	UNKNOWN	W31	25.9	25.9	0.0	0.0	87.9	87.9	0.0	0.0	24	5	24	5	0.0	0.0
	R8	UNKNOWN	W32	25.5	25.5	0.0	0.0	94.0	94.0	0.0	0.0	22	3	22	3	0.0	0.0
	R9	UNKNOWN	W33	26.4	26.4	0.0	0.0	99.5	99.5	0.0	0.0	25	3	25	3	0.0	0.0
	R10	UNKNOWN	W34	25.3	25.3	0.0	0.0	97.5	94.0	3.5	3.6	28	3	28	3	0.0	0.0
	R11	UNKNOWN	W35	22.1	22.1	0.0	0.0	85.4	78.4	7.0	8.2	26	5	26	5	0.0	0.0
F01	R1	LIVING (ASSUMED)	W1	28.6	21.0	7.6	26.6	99.1	99.1	0.0	0.0	42	11	30	7	28.6	36.4
			W2	21.9	20.7	1.2	5.5					52	22	49	19	5.8	13.6
	R2	UNKNOWN	W3	26.6	19.6	7.0	26.3	99.3	63.4	35.9	36.2	40	11	31	8	22.5	27.3
	R3	UNKNOWN	W4	22.9	16.9	6.0	26.2	98.0	55.6	42.4	43.3	39	12	31	8	20.5	33.3
	R4	KITCHEN (ASSUMED)	W5	32.5	32.5	0.0	0.0	98.6	98.6	0.0	0.0	30	5	30	5	0.0	0.0
			W6	32.4	32.4	0.0	0.0					30	5	30	5	0.0	0.0
	R5	UNKNOWN	W7	32.2	32.2	0.0	0.0	99.5	99.5	0.0	0.0	30	5	30	5	0.0	0.0
	R6	UNKNOWN	W8	31.9	31.9	0.0	0.0	99.5	99.5	0.0	0.0	30	5	30	5	0.0	0.0
	R7	UNKNOWN	W9	31.1	31.1	0.0	0.0	100.0	100.0	0.0	0.0	30	5	30	5	0.0	0.0
	R8	UNKNOWN	W10	29.9	29.9	0.0	0.0	100.0	99.5	0.5	0.5	30	5	30	5	0.0	0.0
	R9	UNKNOWN	W11	28.3	28.3	0.0	0.0	99.5	99.5	0.0	0.0	30	5	30	5	0.0	0.0
	R10	UNKNOWN	W12	25.4	25.4	0.0	0.0	96.0	95.5	0.5	0.5	30	5	30	5	0.0	0.0
F02	R1	LIVING (ASSUMED)	W1	29.2	21.1	8.1	27.7	99.1	99.1	0.0	0.0	42	13	29	11	31.0	15.4
			W2	33.6	32.4	1.2	3.6					77	24	74	21	3.9	12.5
	R2	UNKNOWN	W3	28.5	20.5	8.0	28.1	99.3	66.0	33.3	33.5	40	13	29	11	27.5	15.4
	R3	UNKNOWN	W4	25.9	18.7	7.2	27.8	99.3	59.5	39.8	40.1	37	13	29	11	21.6	15.4
	R4	KITCHEN (ASSUMED)	W5	29.7	29.7	0.0	0.0	98.6	98.6	0.0	0.0	28	5	28	5	0.0	0.0
			W6	29.6	29.6	0.0	0.0					28	5	28	5	0.0	0.0
	R5	UNKNOWN	W7	29.5	29.5	0.0	0.0	99.5	99.5	0.0	0.0	28	5	28	5	0.0	0.0
	R6	UNKNOWN	W8	29.4	29.4	0.0	0.0	99.5	99.5	0.0	0.0	28	5	28	5	0.0	0.0
	R7	UNKNOWN	W9	29.4	29.4	0.0	0.0	100.0	100.0	0.0	0.0	28	5	28	5	0.0	0.0
	R8	UNKNOWN	W10	29.2	29.2	0.0	0.0	99.5	99.5	0.0	0.0	28	5	28	5	0.0	0.0
	R9	UNKNOWN	W11	29.0	29.0	0.0	0.0	99.5	99.5	0.0	0.0	28	5	28	5	0.0	0.0
	R10	UNKNOWN	W12	28.8	28.8	0.0	0.0	99.5	99.5	0.0	0.0	28	5	28	5	0.0	0.0

Baseline v
Max Parameter
(NO BALCONIES)

VERTICAL SKY COMPONENT

FLOOR	FLAT	ROOM	ROOM USE	WINDOW	BASELINE (NO BALCONIES)	MAX PARAMETER (NO BALCONIES)	LOSS	%
ABERFELDY ESTATE PHASE TWO BLOCK D								
F00		R1	KITCHEN	W1	24.8	19.8	5.0	20.2
				W2	33.1	32.9	0.2	0.6
		R2	BEDROOM	W3	21.7	18.1	3.6	16.6
				W4	21.3	18.4	2.9	13.6
		R4	STUDIO	W5	14.8	14.8	0.0	0.0
				W6	22.7	19.1	3.6	15.9
	R5	KITCHEN	W7	1.2	1.2	0.0	0.0	
			W8	22.7	18.4	4.3	18.9	
		R6	BEDROOM	W9	23.0	18.8	4.2	18.3
				W10	22.9	18.7	4.2	18.3
		R8	L/K/D	W11	22.7	18.7	4.0	17.6
				W12	1.9	0.7	1.2	63.2
F01		R1	L/K/D	W1	27.8	21.9	5.9	21.2
				W2	33.7	33.4	0.3	0.9
				W3	33.7	33.4	0.3	0.9
	R2	BEDROOM	W4	26.2	20.9	5.3	20.2	
			W5	24.4	20.1	4.3	17.6	
	R4	STUDIO	W6	25.9	21.3	4.6	17.8	
			W7	26.1	21.0	5.1	19.5	
	R5	L/K/D	W8	25.7	20.6	5.1	19.8	
			W9	25.9	21.1	4.8	18.5	
			W10	25.3	20.8	4.5	17.8	
			W11	2.8	0.7	2.1	75.0	
F02		R1	L/K/D	W1	30.2	23.4	6.8	22.5
				W2	34.4	33.8	0.6	1.7
				W3	34.3	33.8	0.5	1.5
	R2	BEDROOM	W4	29.2	22.5	6.7	22.9	
			W5	27.6	21.8	5.8	21.0	
	R4	STUDIO	W6	28.9	23.3	5.6	19.4	
			W7	29.1	23.5	5.6	19.2	
	R5	L/K/D	W8	28.7	22.8	5.9	20.6	
			W9	29.0	23.7	5.3	18.3	
			W10	28.4	23.5	4.9	17.3	
			W11	3.7	0.8	2.9	78.4	
F03		R1	L/K/D	W1	32.5	24.7	7.8	24.0
				W2	34.8	34.2	0.6	1.7
				W3	34.9	34.2	0.7	2.0
	R2	BEDROOM	W4	31.7	23.8	7.9	24.9	
			W5	30.2	23.1	7.1	23.5	
	R4	STUDIO	W6	31.5	24.8	6.7	21.3	
			W7	31.7	25.5	6.2	19.6	
	R5	L/K/D	W8	31.1	24.5	6.6	21.2	
			W9	31.7	26.0	5.7	18.0	
			W10	31.3	26.2	5.1	16.3	
			W11	4.4	0.9	3.5	79.5	
F04		R1	L/K/D	W1	34.7	26.3	8.4	24.2
				W2	35.1	34.4	0.7	2.0
				W3	35.1	34.5	0.6	1.7
	R2	BEDROOM	W4	34.1	25.4	8.7	25.5	
			W5	29.4	29.4	0.0	0.0	
	R3	BEDROOM	W6	32.6	24.6	8.0	24.5	
F05		R1	L/K/D	W1	36.3	28.0	8.3	22.9
				W2	35.4	34.7	0.7	2.0
				W3	35.4	34.8	0.6	1.7
	R2	BEDROOM	W4	35.9	27.2	8.7	24.2	
			W5	30.3	30.3	0.0	0.0	
	R3	BEDROOM	W6	34.6	26.2	8.4	24.3	
ATELIER COURT								
F00		R1	LIVING ROOM	W1	28.4	10.4	18.0	63.4
				W2	28.8	10.3	18.5	64.2
	R2	BEDROOM	W3	27.3	9.9	17.4	63.7	
			W4	26.9	10.1	16.8	62.5	
	R3	BEDROOM	W5	27.1	10.2	16.9	62.4	
			W6	27.9	11.3	16.6	59.5	

VERTICAL SKY COMPONENT								
FLOOR	FLAT	ROOM	ROOM USE	WINDOW	BASELINE (NO BALCONIES)	MAX PARAMETER (NO BALCONIES)	LOSS	%
		R5	L/K/D	W7	28.1	11.3	16.8	59.8
				W8	25.6	10.7	14.9	58.2
				W9	26.7	10.9	15.8	59.2
		R6	KITCHEN	W10	25.2	10.8	14.4	57.1
		R7	LIVING ROOM	W11	26.1	12.0	14.1	54.0
F01		R1	LIVING ROOM	W1	34.1	13.9	20.2	59.2
				W2	34.4	13.7	20.7	60.2
		R2	BEDROOM	W3	32.9	13.4	19.5	59.3
		R3	BEDROOM	W4	32.6	13.7	18.9	58.0
				W5	32.7	13.6	19.1	58.4
		R4	L/K/D	W6	31.9	14.5	17.4	54.5
				W7	33.4	14.9	18.5	55.4
		R5	BEDROOM	W8	31.7	14.7	17.0	53.6
		R6	BEDROOM	W9	31.4	15.2	16.2	51.6
		R7	LIVING ROOM	W10	31.9	16.2	15.7	49.2
		R8	LIVING ROOM	W11	31.1	15.9	15.2	48.9
				W12	29.5	14.4	15.1	51.2
		R9	BEDROOM	W13	31.3	16.2	15.1	48.2
		R10	BEDROOM	W14	31.4	16.3	15.1	48.1
		R11	BEDROOM	W15	31.5	16.6	14.9	47.3
		R12	BEDROOM	W16	31.8	16.7	15.1	47.5
		R13	BEDROOM	W17	32.0	16.7	15.3	47.8
		R14	BEDROOM	W18	32.6	16.8	15.8	48.5
		R15	LIVING ROOM	W19	34.0	17.5	16.5	48.5
		R16	LIVING ROOM	W20	34.3	17.6	16.7	48.7
		R17	BEDROOM	W21	33.1	16.8	16.3	49.2
		R18	BEDROOM	W22	33.1	16.7	16.4	49.5
		R19	BEDROOM	W23	33.2	16.8	16.4	49.4
		R20	BEDROOM	W24	33.1	16.6	16.5	49.8
		R21	LIVING ROOM	W25	34.4	17.2	17.2	50.0
		R22	LIVING ROOM	W26	33.7	16.4	17.3	51.3
		R23	BEDROOM	W27	32.8	15.1	17.7	54.0
		R24	KITCHEN	W28	33.0	16.4	16.6	50.3
		R25	LIVING ROOM	W29	16.2	16.1	0.1	0.6
F02		R1	LIVING ROOM	W1	37.0	15.1	21.9	59.2
				W2	37.2	14.9	22.3	59.9
		R2	BEDROOM	W3	35.7	14.5	21.2	59.4
		R3	BEDROOM	W4	35.5	14.9	20.6	58.0
				W5	35.6	14.8	20.8	58.4
		R4	L/K/D	W6	35.0	16.2	18.8	53.7
				W7	36.4	16.2	20.2	55.5
		R5	BEDROOM	W8	34.8	16.5	18.3	52.6
		R6	BEDROOM	W9	34.6	17.2	17.4	50.3
		R7	LIVING ROOM	W10	35.4	18.5	16.9	47.7
		R8	LIVING ROOM	W11	34.6	18.5	16.1	46.5
				W12	32.8	16.8	16.0	48.8
		R9	BEDROOM	W13	34.8	18.8	16.0	46.0
		R10	BEDROOM	W14	35.0	19.0	16.0	45.7
		R11	BEDROOM	W15	35.3	19.2	16.1	45.6
		R12	BEDROOM	W16	35.4	19.1	16.3	46.0
		R13	BEDROOM	W17	35.3	19.0	16.3	46.2
		R14	BEDROOM	W18	35.5	18.8	16.7	47.0
		R15	LIVING ROOM	W19	36.7	19.4	17.3	47.1
		R16	LIVING ROOM	W20	36.7	19.4	17.3	47.1
		R17	BEDROOM	W21	35.4	18.8	16.6	46.9
		R18	BEDROOM	W22	35.4	18.9	16.5	46.6
		R19	BEDROOM	W23	35.5	19.0	16.5	46.5
		R20	BEDROOM	W24	35.4	19.0	16.4	46.3
		R21	LIVING ROOM	W25	36.8	19.8	17.0	46.2
		R22	LIVING ROOM	W26	35.9	19.3	16.6	46.2
		R23	BEDROOM	W27	34.8	18.8	16.0	46.0
		R24	KITCHEN	W28	34.9	20.0	14.9	42.7
		R25	LIVING ROOM	W29	16.7	16.7	0.0	0.0
F03		R1	LIVING ROOM	W1	37.9	16.0	21.9	57.8
				W2	38.0	15.7	22.3	58.7
		R2	BEDROOM	W3	36.8	15.7	21.1	57.3
		R3	BEDROOM	W4	36.8	16.1	20.7	56.3
				W5	36.8	16.0	20.8	56.5
		R4	L/K/D	W6	36.9	17.6	19.3	52.3
				W7	38.1	17.5	20.6	54.1

VERTICAL SKY COMPONENT

FLOOR	FLAT	ROOM	ROOM USE	WINDOW	BASELINE (NO BALCONIES)	MAX PARAMETER (NO BALCONIES)	LOSS	%
		R5	BEDROOM	W8	36.9	18.0	18.9	51.2
		R6	BEDROOM	W9	36.8	18.8	18.0	48.9
		R7	LIVING ROOM	W10	37.9	20.4	17.5	46.2
		R8	LIVING ROOM	W11	36.8	20.6	16.2	44.0
				W12	36.1	19.5	16.6	46.0
		R9	BEDROOM	W13	36.7	20.9	15.8	43.1
		R10	BEDROOM	W14	36.8	21.1	15.7	42.7
		R11	BEDROOM	W15	36.9	21.2	15.7	42.5
		R12	BEDROOM	W16	36.9	20.9	16.0	43.4
		R13	BEDROOM	W17	36.8	20.7	16.1	43.8
		R14	BEDROOM	W18	36.9	20.5	16.4	44.4
		R15	LIVING ROOM	W19	38.5	21.4	17.1	44.4
		R16	LIVING ROOM	W20	38.4	21.5	16.9	44.0
		R17	BEDROOM	W21	36.8	20.6	16.2	44.0
		R18	BEDROOM	W22	36.8	20.9	15.9	43.2
		R19	BEDROOM	W23	36.9	21.1	15.8	42.8
		R20	BEDROOM	W24	36.8	21.4	15.4	41.8
		R21	LIVING ROOM	W25	38.2	22.8	15.4	40.3
		R22	LIVING ROOM	W26	37.1	22.4	14.7	39.6
		R23	BEDROOM	W27	35.8	22.4	13.4	37.4
		R24	KITCHEN	W28	35.8	23.4	12.4	34.6
		R25	LIVING ROOM	W29	12.8	12.8	0.0	0.0
F04		R1	KITCHEN	W1	36.1	23.7	12.4	34.3
		R2	KITCHEN	W2	31.0	23.8	7.2	23.2
		R3	LIVING ROOM	W3	37.1	24.5	12.6	34.0
				W4	34.6	27.0	7.6	22.0
		R4	BEDROOM	W5	36.1	25.0	11.1	30.7
		R5	KITCHEN	W6	36.1	26.0	10.1	28.0
		R6	LIVING ROOM	W7	17.8	17.7	0.1	0.6
F05		R1	KITCHEN	W1	35.6	28.8	6.8	19.1
		R2	LIVING ROOM	W2	37.5	26.0	11.5	30.7
				W3	35.7	28.6	7.1	19.9
		R3	BEDROOM	W4	36.4	26.4	10.0	27.5
		R4	KITCHEN	W5	36.4	27.2	9.2	25.3
		R5	LIVING ROOM	W6	18.3	18.3	0.0	0.0
F06		R1	KITCHEN	W1	36.5	28.3	8.2	22.5
		R2	LIVING ROOM	W2	31.1	24.8	6.3	20.3
				W3	14.5	14.5	0.0	0.0
F07		R1	KITCHEN	W1	36.6	29.4	7.2	19.7
		R2	LIVING ROOM	W2	34.6	28.8	5.8	16.8
				W3	25.8	25.8	0.0	0.0
DEVONS WHARF								
F00		R1	L/K/D	W1	24.3	22.9	1.4	5.8
				W2	20.8	17.6	3.2	15.4
		R2	L/K/D	W3	25.1	21.4	3.7	14.7
				W4	27.0	23.2	3.8	14.1
				W5	27.5	23.7	3.8	13.8
		R3	L/K/D	W6	31.1	27.8	3.3	10.6
				W7	31.3	27.8	3.5	11.2
		R4	BEDROOM	W8	31.5	27.9	3.6	11.4
		R5	L/K/D	W9	31.8	28.0	3.8	11.9
		R6	L/K/D	W10	32.6	28.4	4.2	12.9
		R7	BEDROOM	W11	32.7	28.4	4.3	13.1
		R8	L/K/D	W12	32.8	28.2	4.6	14.0
				W13	33.1	27.5	5.6	16.9
		R9	BEDROOM	W14	32.9	27.1	5.8	17.6
M00		R1	BEDROOM	W1	33.6	28.8	4.8	14.3
				W2	33.7	28.7	5.0	14.8
		R2	BEDROOM	W3	33.9	28.5	5.4	15.9
				W4	35.8	29.0	6.8	19.0
				W5	36.0	29.3	6.7	18.6
		R3	BEDROOM	W6	35.7	29.0	6.7	18.8
		R4	L/K/D	W7	35.4	29.0	6.4	18.1
		R5	L/K/D	W8	35.0	29.1	5.9	16.9
				W9	34.9	29.4	5.5	15.8
				W10	22.6	22.6	0.0	0.0

VERTICAL SKY COMPONENT

FLOOR	FLAT	ROOM	ROOM USE	WINDOW	BASELINE (NO BALCONIES)	MAX PARAMETER (NO BALCONIES)	LOSS	%
		R6	BEDROOM	W11	6.7	6.7	0.0	0.0
		R7	BEDROOM	W12	11.7	11.7	0.0	0.0
		R8	BEDROOM	W13	10.3	10.3	0.0	0.0
		R9	L/K/D	W14	22.5	21.9	0.6	2.7
		R10	L/K/D	W15	30.0	27.9	2.1	7.0
				W16	25.7	23.8	1.9	7.4
		R11	BEDROOM	W17	30.9	27.9	3.0	9.7
		R12	L/K/D	W18	23.6	20.7	2.9	12.3
				W19	31.2	28.3	2.9	9.3
		R13	BEDROOM	W20	35.0	32.0	3.0	8.6
		R14	L/K/D	W21	33.9	30.9	3.0	8.8
				W22	33.9	30.8	3.1	9.1
				W23	8.8	5.7	3.1	35.2
		R15	L/K/D	W24	34.4	34.4	0.0	0.0
				W25	34.5	34.5	0.0	0.0
				W26	34.7	32.1	2.6	7.5
				W27	9.9	9.9	0.0	0.0
				W28	33.9	31.0	2.9	8.6
F01		R1	L/K/D	W1	34.8	34.8	0.0	0.0
				W2	34.9	34.9	0.0	0.0
				W3	36.3	33.1	3.2	8.8
				W4	10.1	10.1	0.0	0.0
				W5	35.5	32.0	3.5	9.9
		R2	L/K/D	W6	35.5	31.9	3.6	10.1
				W7	35.5	31.9	3.6	10.1
				W8	9.2	5.9	3.3	35.9
		R3	BEDROOM	W9	36.6	33.0	3.6	9.8
		R4	L/K/D	W10	25.0	21.4	3.6	14.4
				W11	33.0	29.5	3.5	10.6
		R5	BEDROOM	W12	32.7	29.2	3.5	10.7
		R6	L/K/D	W13	31.9	29.5	2.4	7.5
				W14	27.5	25.1	2.4	8.7
		R7	L/K/D	W15	23.7	22.9	0.8	3.4
		R8	L/K/D	W16	10.2	10.2	0.0	0.0
				W17	36.6	31.7	4.9	13.4
				W18	36.6	31.7	4.9	13.4
		R9	BEDROOM	W19	35.4	30.2	5.2	14.7
		R10	BEDROOM	W20	35.4	30.1	5.3	15.0
		R11	L/K/D	W21	35.6	29.8	5.8	16.3
				W22	35.7	29.8	5.9	16.5
				W23	35.9	28.9	7.0	19.5
				W24	35.9	28.8	7.1	19.8
				W25	10.2	9.9	0.3	2.9
		R12	BEDROOM	W26	37.1	30.1	7.0	18.9
		R13	BEDROOM	W27	37.4	30.5	6.9	18.4
		R14	BEDROOM	W28	37.3	30.6	6.7	18.0
		R15	L/K/D	W29	10.5	6.1	4.4	41.9
				W30	35.6	29.3	6.3	17.7
		R16	L/K/D	W31	36.9	30.8	6.1	16.5
				W32	36.9	30.9	6.0	16.3
				W33	36.8	30.9	5.9	16.0
				W34	36.8	31.0	5.8	15.8
				W35	25.5	25.4	0.1	0.4
		R17	BEDROOM	W36	7.6	7.6	0.0	0.0
		R18	BEDROOM	W37	14.3	14.3	0.0	0.0
		R19	BEDROOM	W38	12.1	12.1	0.0	0.0
F02		R1	L/K/D	W1	35.2	35.2	0.0	0.0
				W2	35.3	35.3	0.0	0.0
				W3	37.5	33.7	3.8	10.1
				W4	10.3	10.3	0.0	0.0
				W5	36.6	32.6	4.0	10.9
		R2	L/K/D	W6	36.7	32.5	4.2	11.4
				W7	36.7	32.5	4.2	11.4
				W8	9.5	6.2	3.3	34.7
		R3	BEDROOM	W9	37.7	33.6	4.1	10.9
		R4	L/K/D	W10	26.0	21.9	4.1	15.8
				W11	34.1	30.1	4.0	11.7
		R5	BEDROOM	W12	34.2	30.3	3.9	11.4
		R6	L/K/D	W13	33.8	31.0	2.8	8.3
				W14	29.5	26.8	2.7	9.2
		R7	L/K/D	W15	25.3	24.3	1.0	4.0

VERTICAL SKY COMPONENT

FLOOR	FLAT	ROOM	ROOM USE	WINDOW	BASELINE (NO BALCONIES)	MAX PARAMETER (NO BALCONIES)	LOSS	%
		R8	L/K/D	W16	10.8	10.8	0.0	0.0
				W17	37.7	32.4	5.3	14.1
				W18	37.7	32.4	5.3	14.1
		R9	BEDROOM	W19	36.2	30.7	5.5	15.2
		R10	BEDROOM	W20	36.3	30.6	5.7	15.7
		R11	L/K/D	W21	36.3	30.3	6.0	16.5
				W22	36.4	30.3	6.1	16.8
				W23	36.3	29.5	6.8	18.7
				W24	36.2	29.4	6.8	18.8
				W25	10.3	10.0	0.3	2.9
		R12	BEDROOM	W26	37.4	30.8	6.6	17.6
		R13	BEDROOM	W27	37.7	31.2	6.5	17.2
		R14	BEDROOM	W28	37.7	31.3	6.4	17.0
		R15	L/K/D	W29	10.8	6.3	4.5	41.7
				W30	36.0	30.0	6.0	16.7
		R16	L/K/D	W31	37.6	31.6	6.0	16.0
				W32	37.7	31.7	6.0	15.9
				W33	37.7	31.7	6.0	15.9
				W34	37.8	31.8	6.0	15.9
				W35	28.1	27.9	0.2	0.7
		R17	BEDROOM	W36	8.6	8.6	0.0	0.0
		R18	BEDROOM	W37	17.2	17.2	0.0	0.0
		R19	BEDROOM	W38	14.0	14.0	0.0	0.0
F03		R1	L/K/D	W1	35.5	35.5	0.0	0.0
				W2	35.6	35.6	0.0	0.0
				W3	37.9	34.2	3.7	9.8
				W4	10.5	10.5	0.0	0.0
				W5	37.1	33.1	4.0	10.8
		R2	L/K/D	W6	37.1	33.0	4.1	11.1
				W7	37.1	33.0	4.1	11.1
				W8	9.7	6.3	3.4	35.1
		R3	BEDROOM	W9	38.1	34.1	4.0	10.5
		R4	L/K/D	W10	25.8	21.7	4.1	15.9
				W11	33.9	29.6	4.3	12.7
		R5	BEDROOM	W12	35.2	31.0	4.2	11.9
		R6	L/K/D	W13	35.7	32.3	3.4	9.5
				W14	32.6	29.5	3.1	9.5
		R7	L/K/D	W15	28.4	27.2	1.2	4.2
		R8	L/K/D	W16	11.4	11.4	0.0	0.0
				W17	38.2	32.9	5.3	13.9
				W18	38.2	32.8	5.4	14.1
		R9	BEDROOM	W19	36.7	31.1	5.6	15.3
		R10	BEDROOM	W20	36.7	31.0	5.7	15.5
		R11	L/K/D	W21	36.7	30.8	5.9	16.1
				W22	36.8	30.8	6.0	16.3
				W23	36.4	30.1	6.3	17.3
				W24	36.4	30.1	6.3	17.3
				W25	10.3	10.1	0.2	1.9
		R12	BEDROOM	W26	37.4	31.2	6.2	16.6
		R13	BEDROOM	W27	37.7	31.6	6.1	16.2
		R14	BEDROOM	W28	37.7	31.8	5.9	15.6
		R15	L/K/D	W29	10.9	6.5	4.4	40.4
				W30	36.2	30.6	5.6	15.5
		R16	L/K/D	W31	37.7	32.0	5.7	15.1
				W32	37.7	32.1	5.6	14.9
				W33	37.7	32.1	5.6	14.9
				W34	37.8	32.3	5.5	14.6
				W35	30.2	30.1	0.1	0.3
		R17	BEDROOM	W36	9.9	9.9	0.0	0.0
		R18	BEDROOM	W37	20.4	20.4	0.0	0.0
		R19	BEDROOM	W38	15.9	15.9	0.0	0.0
F04		R1	L/K/D	W1	30.2	28.1	2.1	7.0
		R2	BEDROOM	W2	36.2	31.0	5.2	14.4
		R3	BEDROOM	W3	29.7	27.9	1.8	6.1
		R4	L/K/D	W4	36.2	31.4	4.8	13.3
				W5	29.7	28.0	1.7	5.7
				W6	31.8	31.7	0.1	0.3
		R5	BEDROOM	W7	13.7	13.7	0.0	0.0
		R6	BEDROOM	W8	23.8	23.8	0.0	0.0
		R7	BEDROOM	W9	18.6	18.6	0.0	0.0
		R8	L/K/D	W10	37.0	33.0	4.0	10.8

VERTICAL SKY COMPONENT

FLOOR	FLAT	ROOM	ROOM USE	WINDOW	BASELINE (NO BALCONIES)	MAX PARAMETER (NO BALCONIES)	LOSS	%
		R9	L/K/D	W11	37.4	33.0	4.4	11.8
				W12	36.1	31.5	4.6	12.7
		R10	BEDROOM	W13	32.4	28.1	4.3	13.3
LEVEN ROAD PHASE THREE								
F00		R1	KITCHEN	W1	16.4	12.2	4.2	25.6
		R2	LIVING ROOM	W2	24.2	14.2	10.0	41.3
		R3	LIVING ROOM	W3	26.3	13.0	13.3	50.6
		R4	KITCHEN	W4	19.0	19.0	0.0	0.0
		R5	KITCHEN	W5	28.8	28.8	0.0	0.0
		R6	LIVING ROOM	W6	27.5	9.6	17.9	65.1
				W7	1.7	1.3	0.4	23.5
		R7	LIVING ROOM	W8	28.1	9.9	18.2	64.8
		R8	LIVING ROOM	W9	28.3	10.2	18.1	64.0
		R9	KITCHEN	W10	27.2	27.0	0.2	0.7
		R10	KITCHEN	W11	28.1	28.0	0.1	0.4
F01		R1	BEDROOM	W1	27.4	17.4	10.0	36.5
		R2	BEDROOM	W2	28.9	17.7	11.2	38.8
		R3	BEDROOM	W3	30.5	15.5	15.0	49.2
		R4	BEDROOM	W4	22.5	22.5	0.0	0.0
		R5	BEDROOM	W5	25.0	25.0	0.0	0.0
		R6	BEDROOM	W6	31.2	16.1	15.1	48.4
		R7	L/K/D	W7	28.3	14.8	13.5	47.7
		R8	BEDROOM	W8	0.8	0.0	0.8	100.0
		R9	BEDROOM	W9	18.8	14.0	4.8	25.5
		R10	BEDROOM	W10	34.3	12.1	22.2	64.7
				W11	0.1	0.1	0.0	0.0
		R11	BEDROOM	W12	34.4	12.2	22.2	64.5
		R12	BEDROOM	W13	34.5	12.6	21.9	63.5
		R13	BEDROOM	W14	34.6	12.8	21.8	63.0
		R14	BEDROOM	W15	30.0	11.1	18.9	63.0
		R15	BEDROOM	W16	30.9	11.1	19.8	64.1
		R16	BEDROOM	W17	29.8	29.6	0.2	0.7
				W18	29.7	29.5	0.2	0.7
		R17	BEDROOM	W19	33.3	33.0	0.3	0.9
				W20	33.1	32.8	0.3	0.9
		R18	BEDROOM	W21	33.4	33.1	0.3	0.9
				W22	33.4	33.1	0.3	0.9
F02		R1	LIVING ROOM	W1	27.8	27.8	0.0	0.0
				W2	24.9	24.9	0.0	0.0
		R2	BEDROOM	W3	35.0	18.5	16.5	47.1
		R3	BEDROOM	W4	34.0	17.6	16.4	48.2
		R4	LIVING ROOM	W5	32.7	20.2	12.5	38.2
				W6	33.3	17.7	15.6	46.8
		R5	BEDROOM	W7	32.4	20.6	11.8	36.4
		R6	BEDROOM	W8	21.1	16.0	5.1	24.2
		R7	BEDROOM	W9	23.9	7.4	16.5	69.0
		R8	LIVING ROOM	W10	32.5	11.4	21.1	64.9
		R9	BEDROOM	W11	35.8	12.5	23.3	65.1
		R10	BEDROOM	W12	35.9	12.8	23.1	64.3
		R11	BEDROOM	W13	35.8	13.0	22.8	63.7
		R12	LIVING ROOM	W14	33.5	13.0	20.5	61.2
F03		R1	LIVING ROOM	W1	31.2	31.2	0.0	0.0
				W2	28.4	28.4	0.0	0.0
		R2	BEDROOM	W3	36.7	19.8	16.9	46.0
		R3	BEDROOM	W4	35.8	18.9	16.9	47.2
		R4	LIVING ROOM	W5	34.8	21.5	13.3	38.2
				W6	36.1	19.2	16.9	46.8
		R5	BEDROOM	W7	35.6	22.1	13.5	37.9
		R6	BEDROOM	W8	25.7	20.8	4.9	19.1
		R7	BEDROOM	W9	26.1	9.0	17.1	65.5
		R8	LIVING ROOM	W10	34.9	12.6	22.3	63.9
		R9	BEDROOM	W11	37.0	13.6	23.4	63.2
		R10	BEDROOM	W12	37.0	13.9	23.1	62.4
		R11	BEDROOM	W13	37.0	14.1	22.9	61.9
		R12	LIVING ROOM	W14	34.9	14.4	20.5	58.7
F04		R1	BEDROOM	W1	33.1	32.9	0.2	0.6
		R2	BEDROOM	W2	35.8	35.6	0.2	0.6

VERTICAL SKY COMPONENT

FLOOR	FLAT	ROOM	ROOM USE	WINDOW	BASELINE (NO BALCONIES)	MAX PARAMETER (NO BALCONIES)	LOSS	%
		R3	BEDROOM	W3	35.8	35.6	0.2	0.6
		R4	LIVING ROOM	W4	35.8	35.6	0.2	0.6
				W5	37.1	34.4	2.7	7.3
		R5	KITCHEN	W6	36.3	33.6	2.7	7.4
		R6	KITCHEN	W7	36.3	33.3	3.0	8.3
		R7	LIVING ROOM	W8	37.2	33.8	3.4	9.1
				W9	37.4	15.1	22.3	59.6
		R8	BEDROOM	W10	37.4	14.8	22.6	60.4
		R9	BEDROOM	W11	37.4	14.4	23.0	61.5
		R10	BEDROOM	W12	34.7	13.5	21.2	61.1